



**Z-Master OFZ**  
**48" Rear Discharge Recycler Deck**  
Model No. 78477—995001 and Up

**Parts Catalog**

**Ordering Replacement Parts**

To order replacement parts, please supply: the part number, the quantity, and the description of each part desired.

**Understanding Reference Numbers**

Each identified part in an illustration has a reference number. The reference number for a part also appears in the parts list, along with other information about the part.

This catalog uses two special reference number formats, one to indicate parts in a service assembly and another to indicate the quantity of a given part in an illustration.

**Service Assembly Reference Numbers**

Parts in service assemblies have reference numbers in the form **a:b**. The **a** represents the reference number of the entire service assembly and the **b** represents a sequential number unique to each part within the service assembly.

For example, a wheel assembly might be identified by reference number **6**, the tire by **6:1**, the valve by **6:2**, and the wheel by **6:3**. When you order the assembly identified by reference number **6**, you receive all parts identified by reference numbers **6:1**, **6:2**, and **6:3**. However, you may also order any part individually.

Reference numbers of this type appear in illustrations and in part lists.

**Reference Numbers Indicating Quantity**

In an illustration, if a reference number indicates more than one part, the reference number has the form **nX y**. The **n** represents the quantity of the part, the **X** is the multiplication symbol, and the **y** represents the reference number.

For example, in an illustration, the reference number **2X 37** means that two of the parts identified by reference number **37** are indicated.

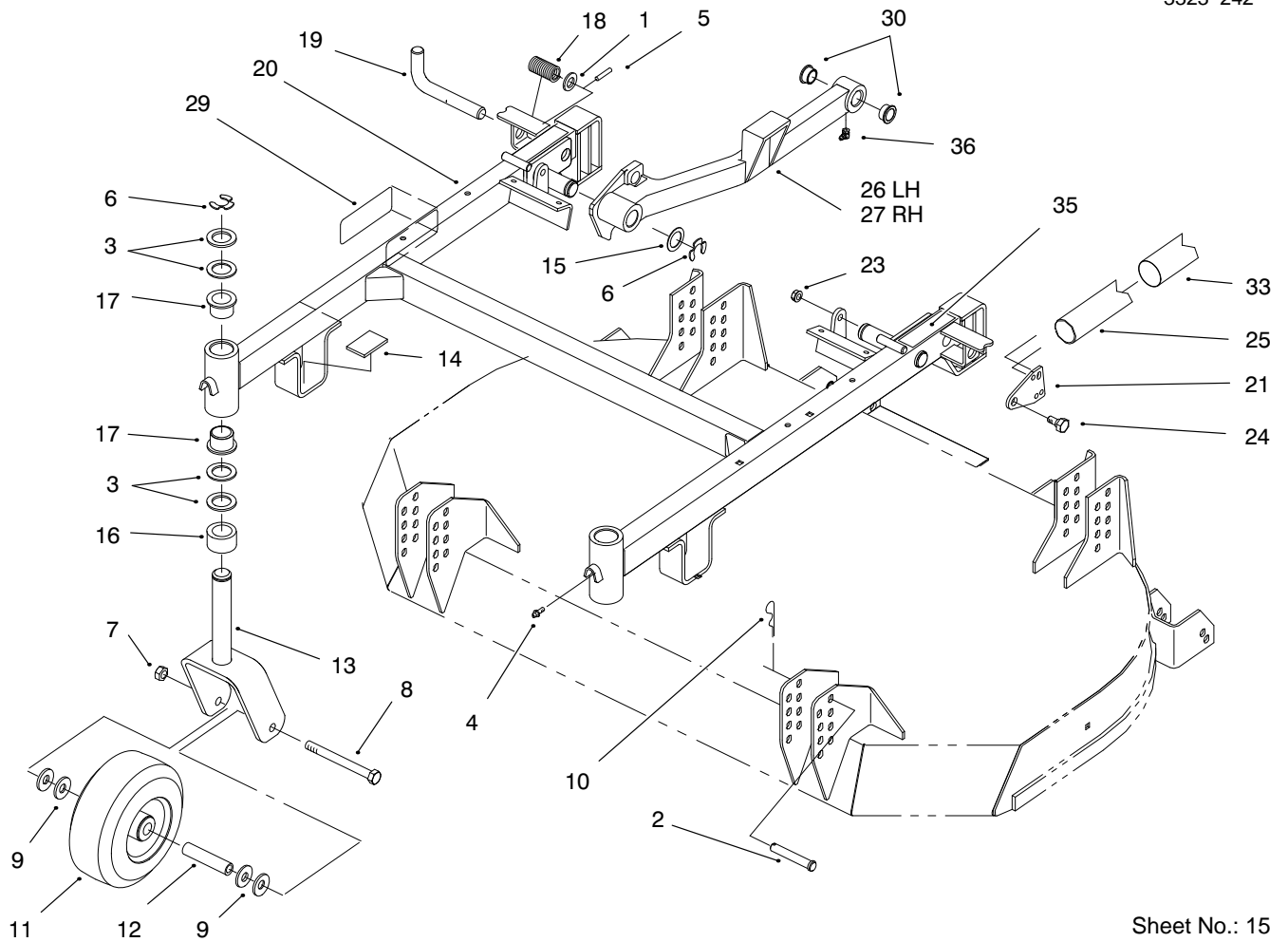
## Contents

Description	Page	Description	Page
Carrier Frame .....	3	Gear Box Assembly .....	5
Covers And Gear Box Assembly .....	4	Deck, Baffles And Blade Assembly .....	6

## Part Description Abbreviations

Part descriptions in this catalog may include the following abbreviations.

Abbreviation	Meaning	Abbreviation	Meaning
AR .....	as required	INC .....	incorporated
ASM .....	assembly	LH .....	left hand
CARR .....	carriage	NI .....	nylon insert
DEG .....	degrees	PPH .....	Phillips pan head
FH .....	flat head	PTH .....	Phillips truss head
GA .....	gauge	PTO .....	power take off
HF .....	hex flange	RH .....	right hand
HH .....	hex head	SFH .....	slotted fillister head
HHF .....	hex head flange	SHH .....	slotted hex head
HLH .....	hex lag head	SQH .....	square head
HJ .....	hex jam	SHWH .....	slotted hex washer head
HOC .....	height-of-cut	SPH .....	slotted pan head
HS .....	hex socket	SRH .....	slotted round head
HSBH .....	hex socket button head	STD .....	standard
HSFH .....	hex socket flat head	TAP .....	self tapping
HSH .....	hex socket head	TTH .....	Torx truss head
HWH .....	hex washer head	WH .....	wing head
HWHTF .....	hex washer head thread forming		



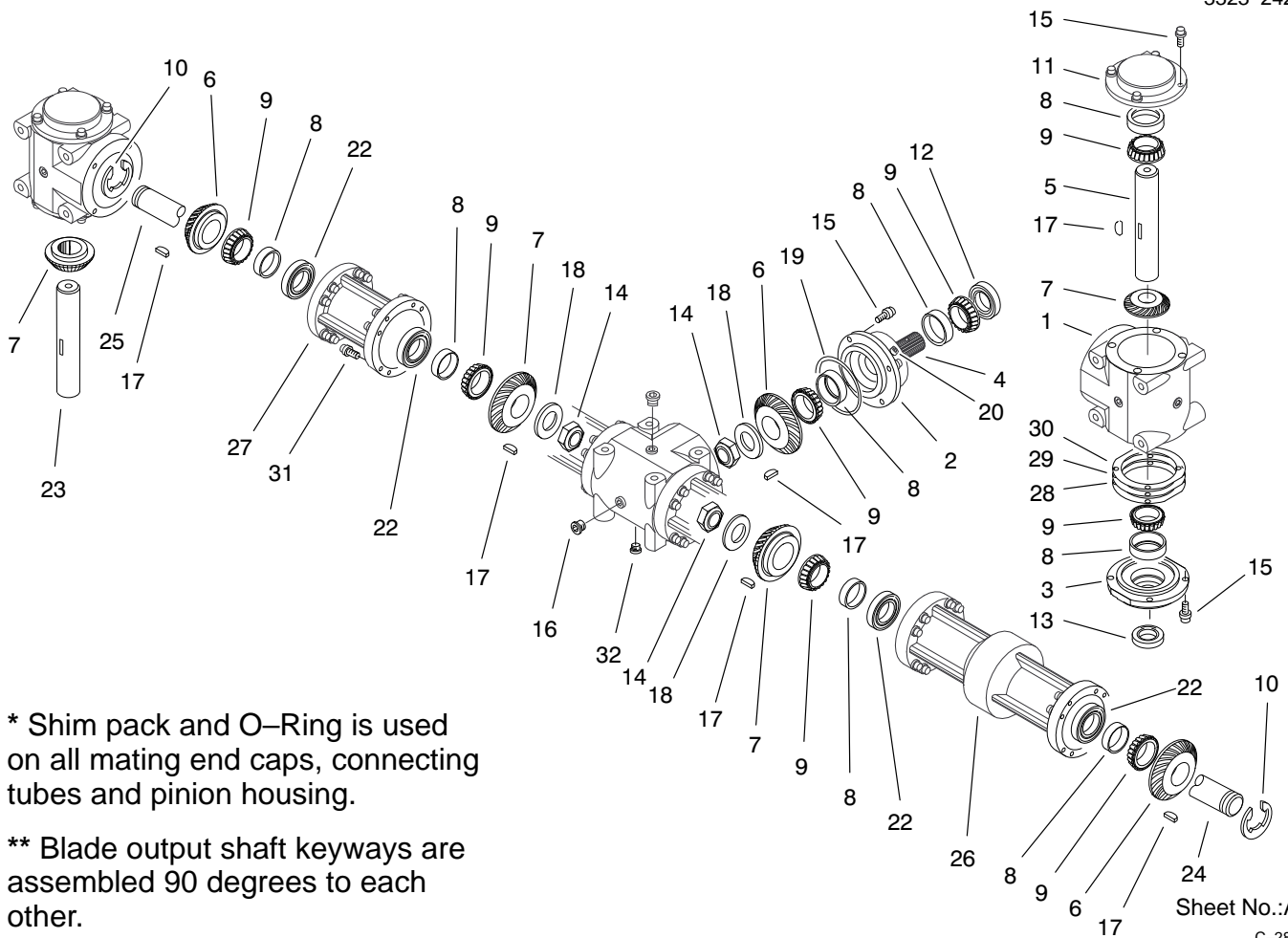
Sheet No.: 15

### Carrier Frame

Ref. No.	Part No.	Qty.	Description
1	9202254	2	Washer-Flat
2	283-55	4	Pin-Clevis
3	3-6781	8	Washer-Thrust
4	302-5	2	Fitting-Grease
5	32121-79	2	Roll Pin
6	32151-91	4	Ring-Retaining
7	32153-5	2	Nut-Lock
8	325-19	2	Screw-HH
9	3256-6	8	Washer-Flat
10	3290-355	4	Pin-Hair
11	98-2859	2	Wheel & Tire ASM
12	68-8980	2	Bushing-Spanner
13	98-2857	2	Castor Fork
14	95-4303	2	Cushion-Rubber
15	9202514	2	Washer-Flat
16	93-1167	2	Spacer-Castor
17	94-1291	4	Bushing-Special
18	98-1339	2	Spring-Compression
19	98-1337	2	Pin-Pivot
20	95-4304	1	Frame-Carrier
21	94-4750	4	Plate-End
23	3296-39	4	Nut-Lock
24	46-3380	4	Bolt-Shoulder
25	94-4664	2	Spring-Extension
26	98-0817	1	Casting-Lift Arm LH
27	98-0818	1	Casting-Lift Arm RH

Ref. No.	Part No.	Qty.	Description
29	98-0816	1	Decal-H.O.C.
30	27-9080	4	Bushing
33	94-9550	2	Cover-Spring
35	55-4300	2	Decal-Warning
36	302-60	2	Fitting-Grease 90





\* Shim pack and O-Ring is used on all mating end caps, connecting tubes and pinion housing.

\*\* Blade output shaft keyways are assembled 90 degrees to each other.

Sheet No.:A1  
C-2839

## Gear Box Assembly

Ref. No.	Part No.	Qty.	Description
1	100-4564	3	Case
2	100-4565	1	Housing – Pinion
3	100-4566	2	Cap – End, Open
4	100-4567	1	Shaft – Input, Splined
5	100-4568	1	Shaft – Cross, A/D
6	100-4569	3	Gear – LH, 27 Tooth
7	100-4570	4	Gear – RH, 29 Tooth
8	100-4571	10	Bearing – Cup
9	100-4572	10	Bearing – Cone
10	100-4573	2	Ring – Retaining
11	100-4574	2	Cap – End, Closed
12	100-4575	1	Seal
13	100-4576	2	Seal
14	100-4577	3	Nut – Jam
15	100-4578	20	Screw
16	100-4579	8	Plug
17	100-4580	7	Key – Woodruff
18	100-4581	3	Washer
19	100-4582	9	O-Ring
20	100-4583	1	Plug
*	100-4584	1	Cover – Transparent
22	100-4585	4	Seal
23	100-4586	1	Shaft – Cross, B/D
24	100-4587	1	Shaft – Connecting, Long

Ref. No.	Part No.	Qty.	Description
25	100-4588	1	Shaft – Connecting, Short
26	100-4589	1	Flange – Connecting, Long
27	100-4590	1	Flange – Connecting, Short
28	100-4591	1	Shim – Brown
29	100-4592	1	Shim – Blue
30	100-4593	1	Shim – Green
31	100-4594	32	Screw
32	100-4595	1	Plug – Magnetic

\* Not Illustrated





