



Count on it.

Form No. 3424-890 Rev B

Parts Catalog

Homologation Kit

Outcross 9060 Series Traction Unit

Model No. 07541



Ordering Replacement Parts

To order replacement parts, please supply the part number, the quantity, and the description of each part desired.

Understanding Reference Numbers

Each identified part in an illustration has a reference number. The reference number for a part also appears in the parts list, along with other information about the part.

This catalog uses two special reference number formats, one to indicate parts in a service assembly and another to indicate the quantity of a given part in an illustration.

Service Assembly Reference Numbers

Parts in service assemblies have reference numbers in the form a:b. The a represents the reference number of the entire service assembly and the b represents a sequential number unique to each part within the service assembly.

For example, a wheel assembly might be identified by reference number 6, the tire by 6:1, the valve by 6:2, and the wheel by 6:3. When you order the assembly identified by reference number 6, you receive all parts identified by reference numbers 6:1, 6:2, and 6:3. However, you may also order any part individually. Reference numbers of this type appear in illustration and in parts lists.

Reference Numbers Indicating Quantity

In an illustration, if a reference number indicates more than one part, the reference number has the form nX y. The n represents the quantity of the part, the X is the multiplication symbol, and the y represents the reference number.

For example, in an illustration, the reference number 2X 37 means that two of the parts identified by reference number 37 are indicated.

Contents

Upper Light Assembly 4

Control Assembly 5

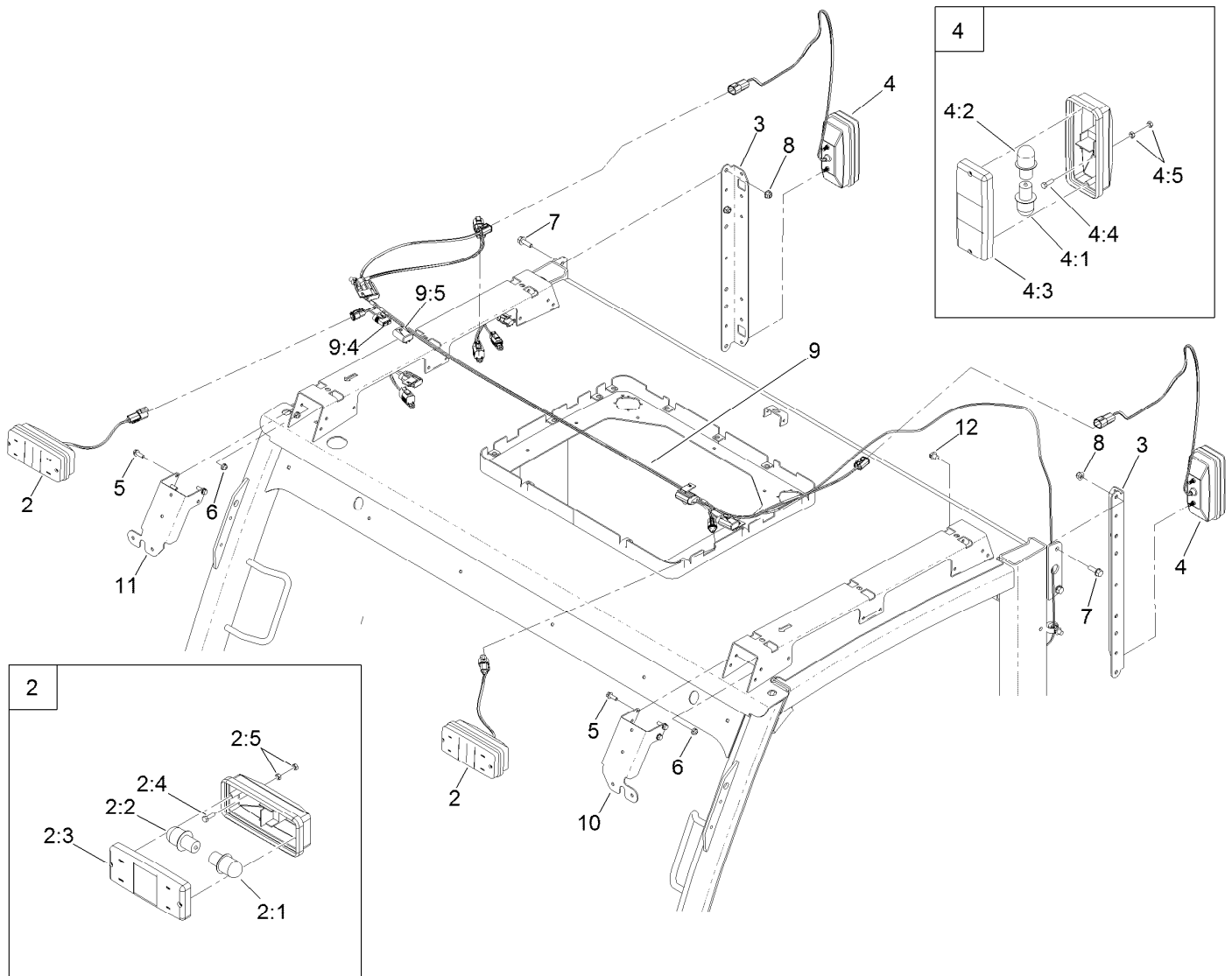
Backup Light and Speed Plate Assembly 6

Headlight Assembly 7

Sun Visor Assembly 8

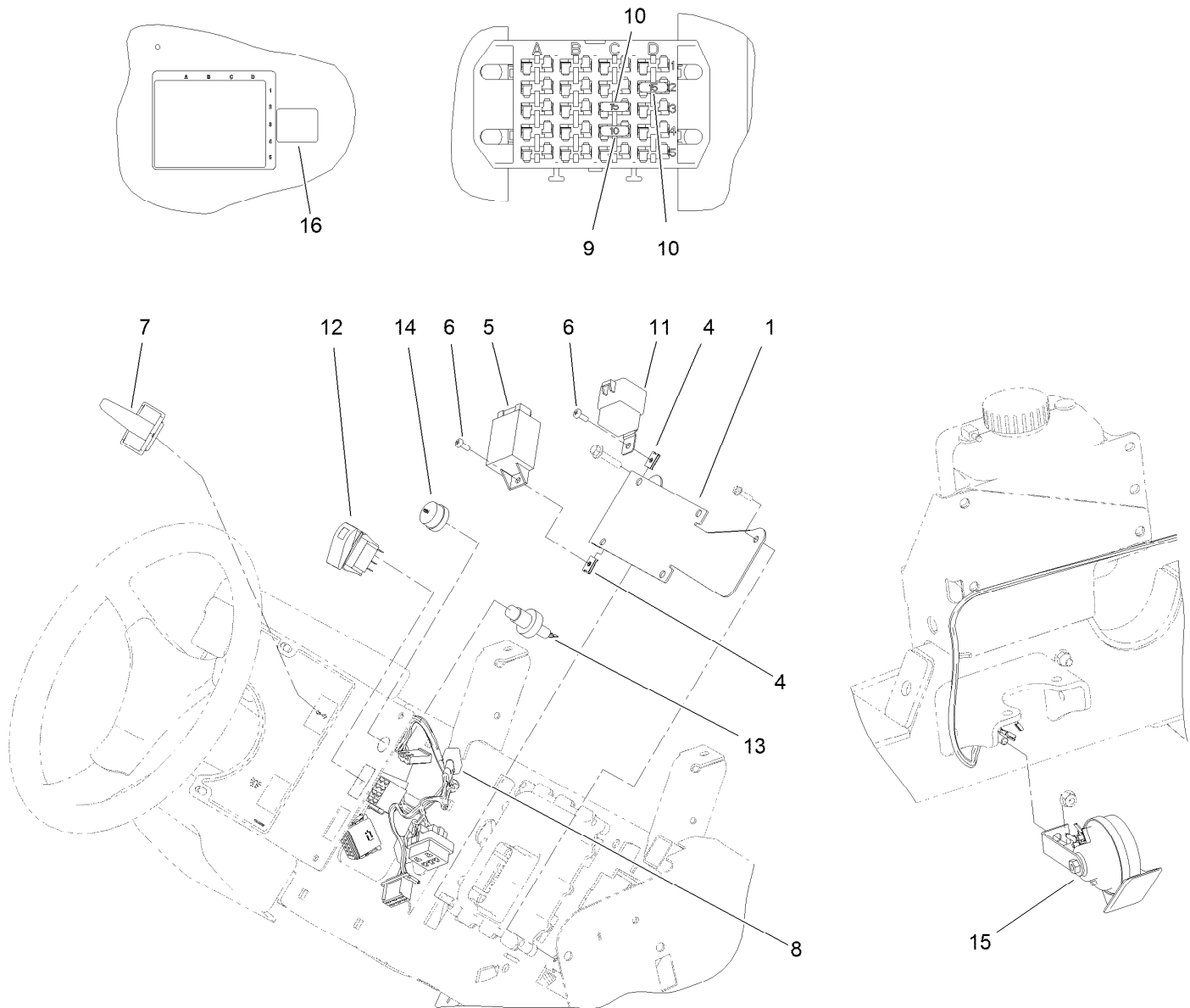
Fender Assembly 9

Wheel Chock Assembly 10



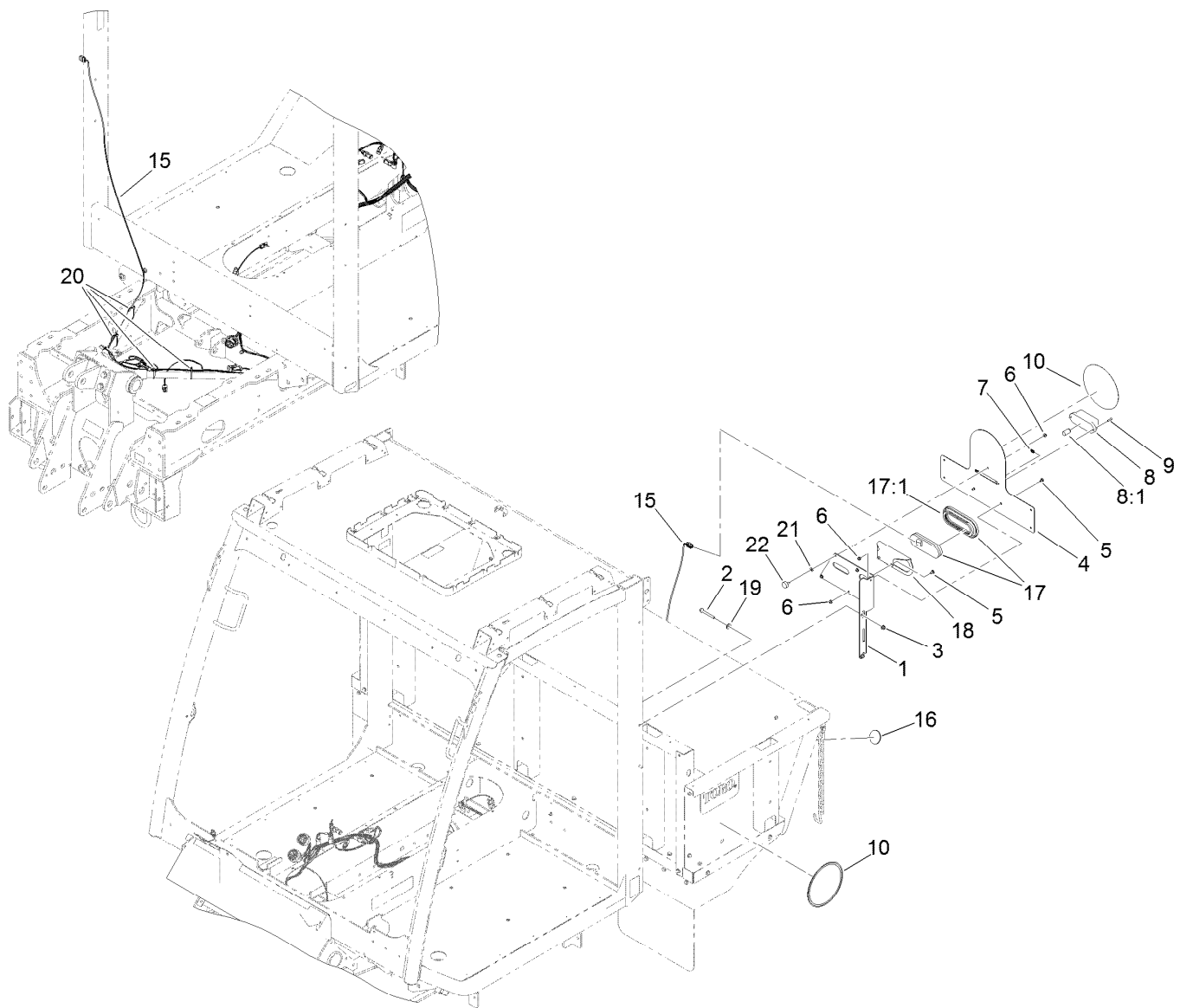
Upper Light Assembly

Ref.	Part Number	Qty.	Description	Ref.	Part Number	Qty.	Description
2	122-1103	2	Light-E C E, Front	4:5	48-7880	4	Nut-Hex
2:1	7228	1	Bulb-1156	5	115-5103	6	Screw-HHF
2:2	115-7859	1	Bulb-5008	6	104-7201	6	Nut-HF
2:3	138-2955	1	Lens-Yellow/White	7	3234-29	4	Screw-HHF
2:4	60-6910	2	Screw-HH	8	104-8300	4	Nut-HF, NI
2:5	48-7880	4	Nut-Hex	9	122-1531	1	Harness-Wire, Turn/Haz
3	139-1924-03	2	Rear-Mount, Turn/Stop	9:4	110928	4	Fuse-Blade, 5 Amp
4	119-8093	2	Tail Light ASM	9:5	32180-019	4	Cover-Fuse, Single
4:1	7228	1	Bulb-1156	10	139-2066-03	1	Mount-LH Turn, Front
4:2	108-8054	1	Bulb-1157	11	139-2067-03	1	Mount-RH Turn, Front
4:3	120-6656	1	Lens-Red/Amber	12	32180-030	1	Clip-Tie
4:4	60-6910	2	Screw-HH				



Control Assembly

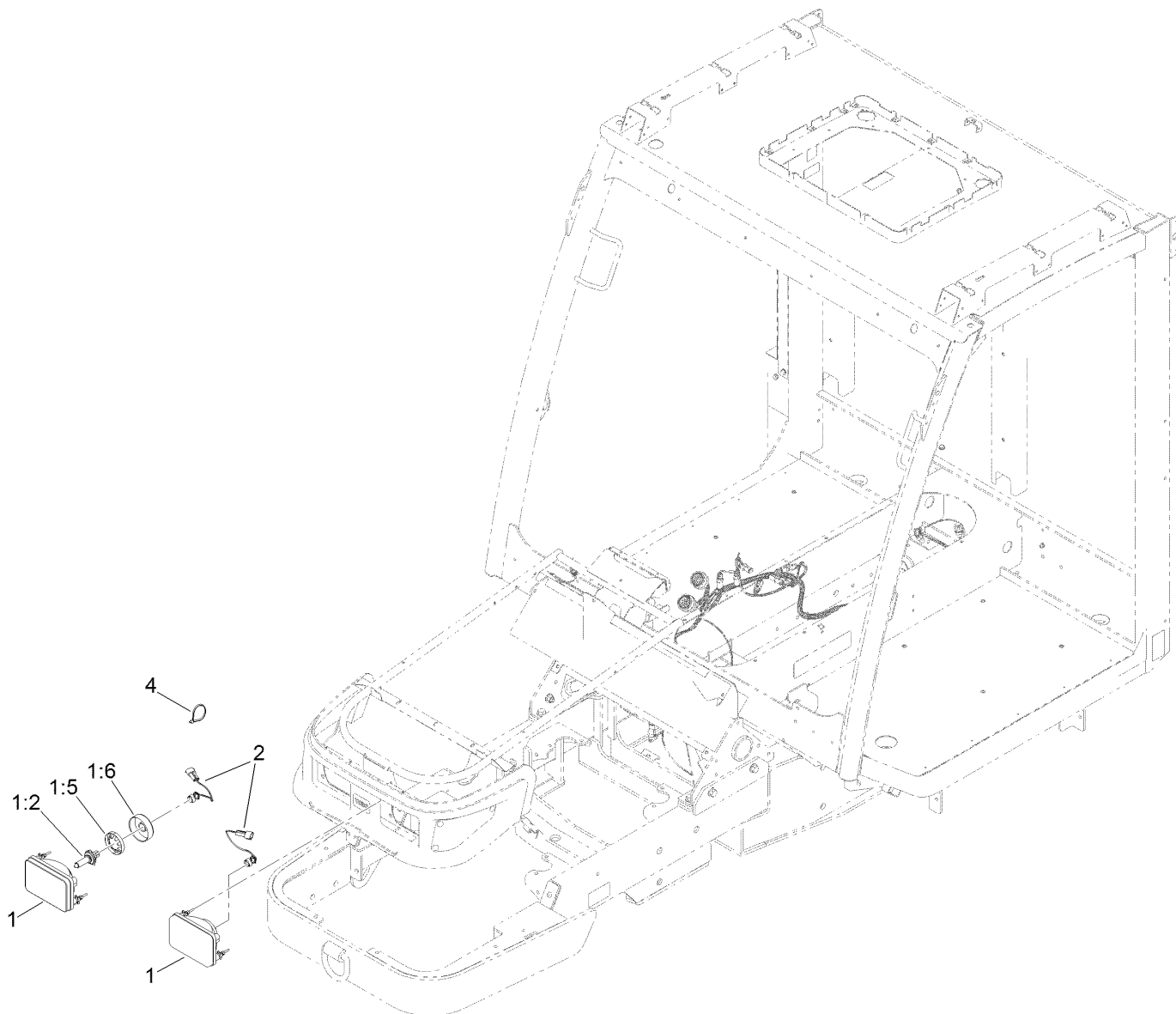
Ref.	Part Number	Qty.	Description
1	138-8121-01	1	Bracket-Flasher
4	107-1013	2	Nut-Speed
5	119-9880	1	Module-Flasher
6	1-803071	2	Screw
7	120-3953	1	Switch-Paddle, On/Off/On
8	122-1386	1	Harness-Wire, Homologation
9	121-8866	1	Fuse-Mini Blade, 10 Amp
10	121-8867	2	Fuse-Mini Blade, 15 Amp
11	99-7430	1	Relay-Mini
12	119-7769	1	Switch-Rocker, On/None/On
13	112-3324	1	Switch-Horn
14	112-3313	1	Nut-Weatherproof
15	116749	1	Horn
16	131-5614	1	Decal-Fuse, EU Kit



Backup Light and Speed Plate Assembly

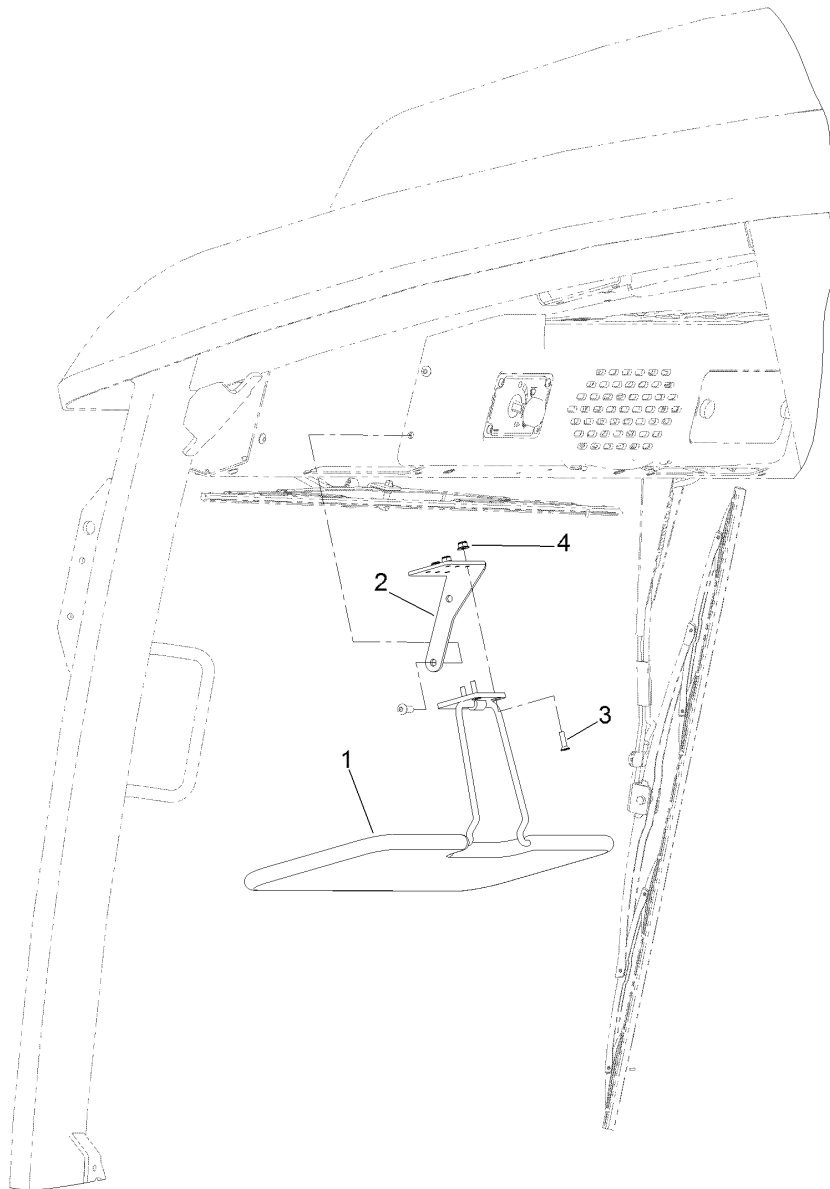
Ref.	Part Number	Qty.	Description
1	139-1925-03	1	Mount-S M V
2	139-1891	2	Screw-HHF
3	104-8300	2	Nut-HF, NI
4	138-3027-03	1	Lic-Speed, Mount
5	116-5611	4	Bolt-Carriage
6	3296-56	5	Nut-Lock, NI
7	107-1013	2	Nut-Speed
8	119-8091	1	Light-Plate
8:1	120-7564	1	Bulb-12W
9	104-2408	2	Screw-HSBH

Ref.	Part Number	Qty.	Description
10	138-3037	3	Decal-Speed (34Kph)
15	122-1545	1	Harness-Wire, Backup Light
16	139-1937	2	Reflector-Red
17	139-1936	1	Light-Backup
17:1	139-1935	1	Grommet-Light
18	139-1934-03	1	Bracket-Backup
19	3256-71	2	Washer-Flat
20	3290-378	4	Tie-Cable
21	119-8952	1	Washer
22	138-2662	1	Bumper-Rubber



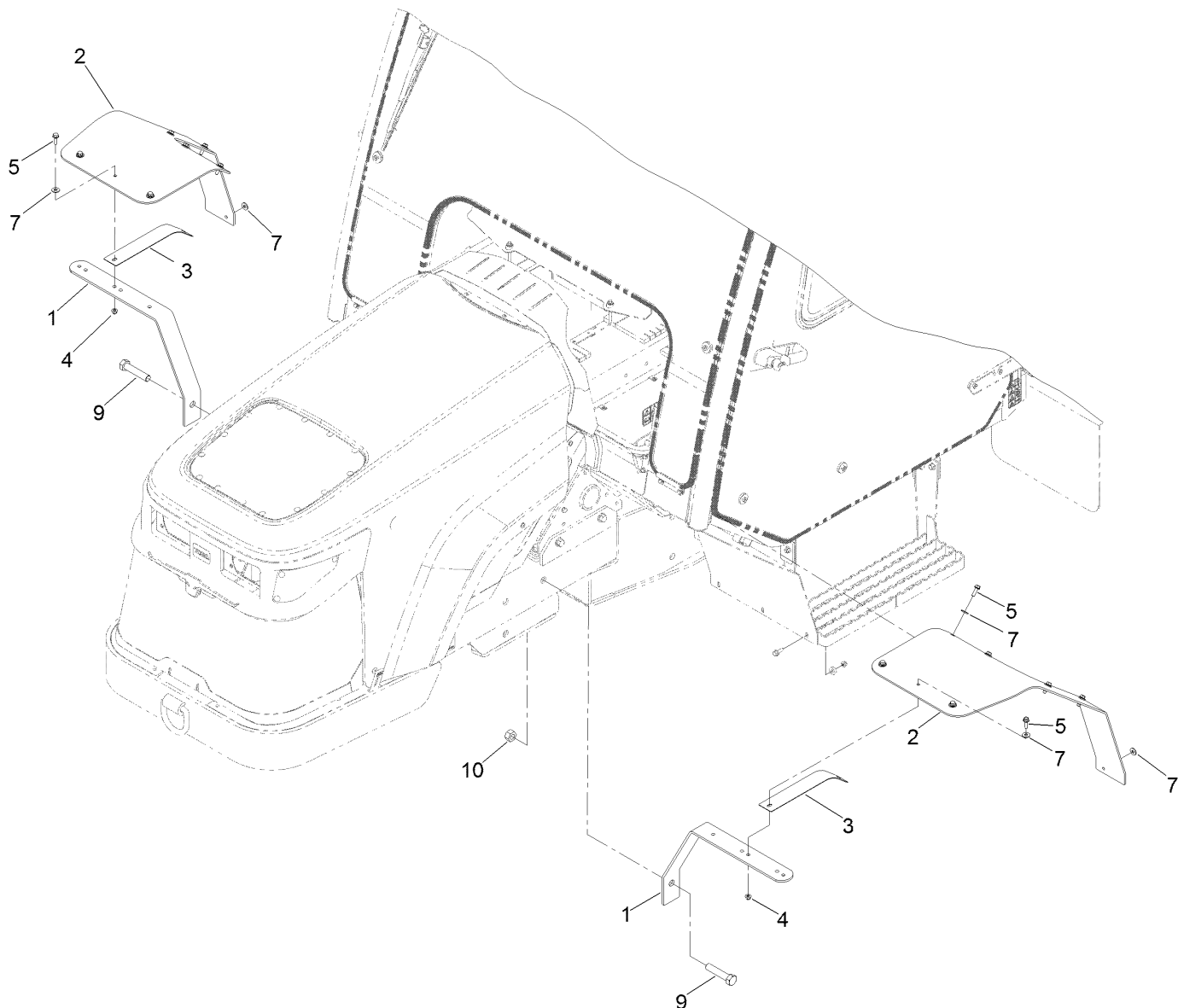
Headlight Assembly

Ref.	Part Number	Qty.	Description
1	114-8431	2	Headlamp-RH
1:2	115-7853	1	Bulb-Headlamp
1:5	115-7667	1	Retainer-Headlamp
1:6	115-7668	1	Boot-Headlamp
2	122-1046	2	Harness-Wire, Headlight
4	3290-378	2	Tie-Cable



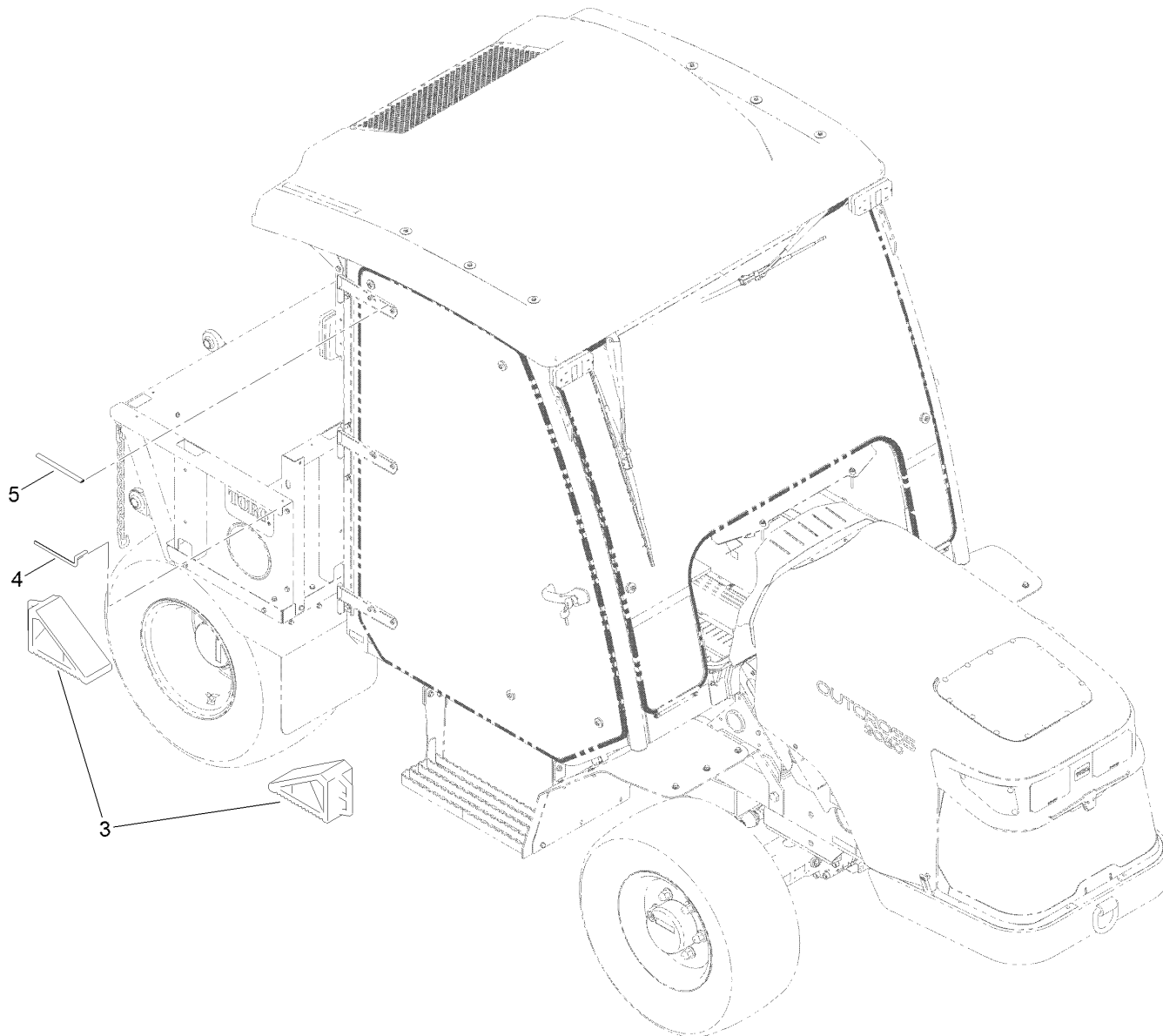
Sun Visor Assembly

<i>Ref.</i>	<i>Part Number</i>	<i>Qty.</i>	<i>Description</i>
1	139-1941	1	Sun-Visor
2	139-1942-03	1	Visor-Mount
3	119-6943	3	Screw-HSFH
4	120-4578	3	Nut-HF



Fender Assembly

Ref.	Part Number	Qty.	Description
1	138-4160-03	2	Support-Fender
2	138-4161	2	Fender-Front
3	138-4162-03	2	Strap-Support
4	104-8300	14	Nut-HF, NI
5	3234-17	14	Screw-HHF
7	3256-3	16	Washer-Flat
9	328-5	2	Screw-HH
10	120-7252	2	Nut-Lock



Wheel Chock Assembly

<i>Ref.</i>	<i>Part Number</i>	<i>Qty.</i>	<i>Description</i>
3	139-1940	1	Chock-Wheel
4	88-7800	2	Strip-Seal, Lower
5	127-5315	12	Trim-Tank

Notes:



Count on it.