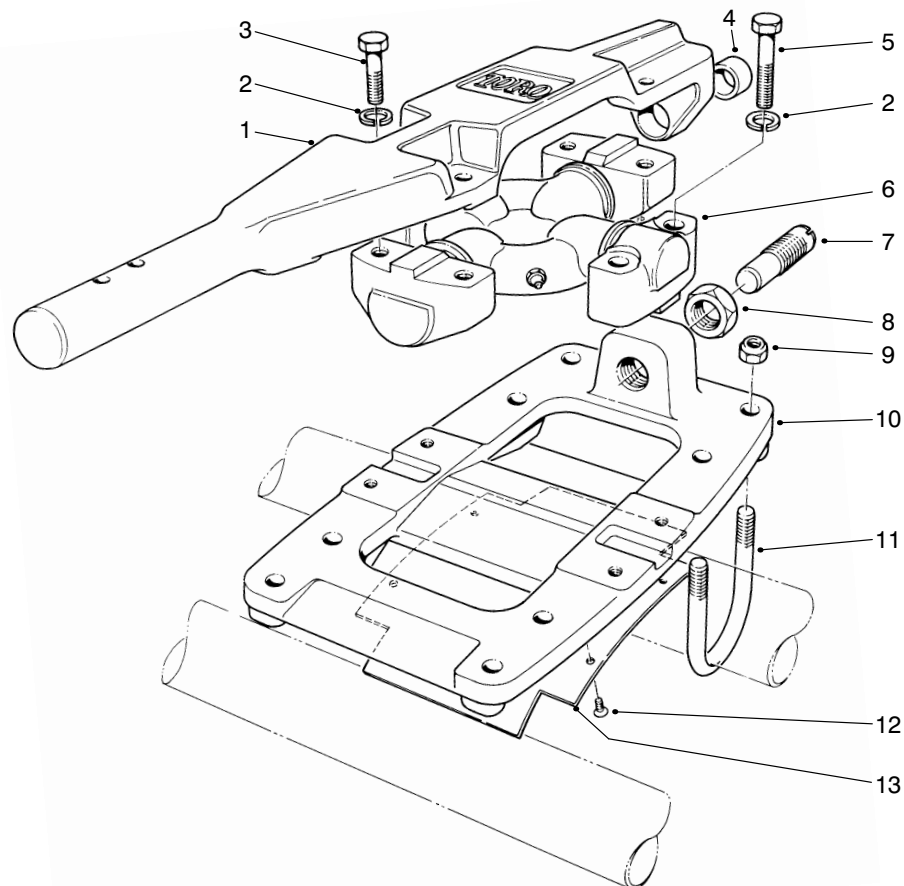


**TORO®**

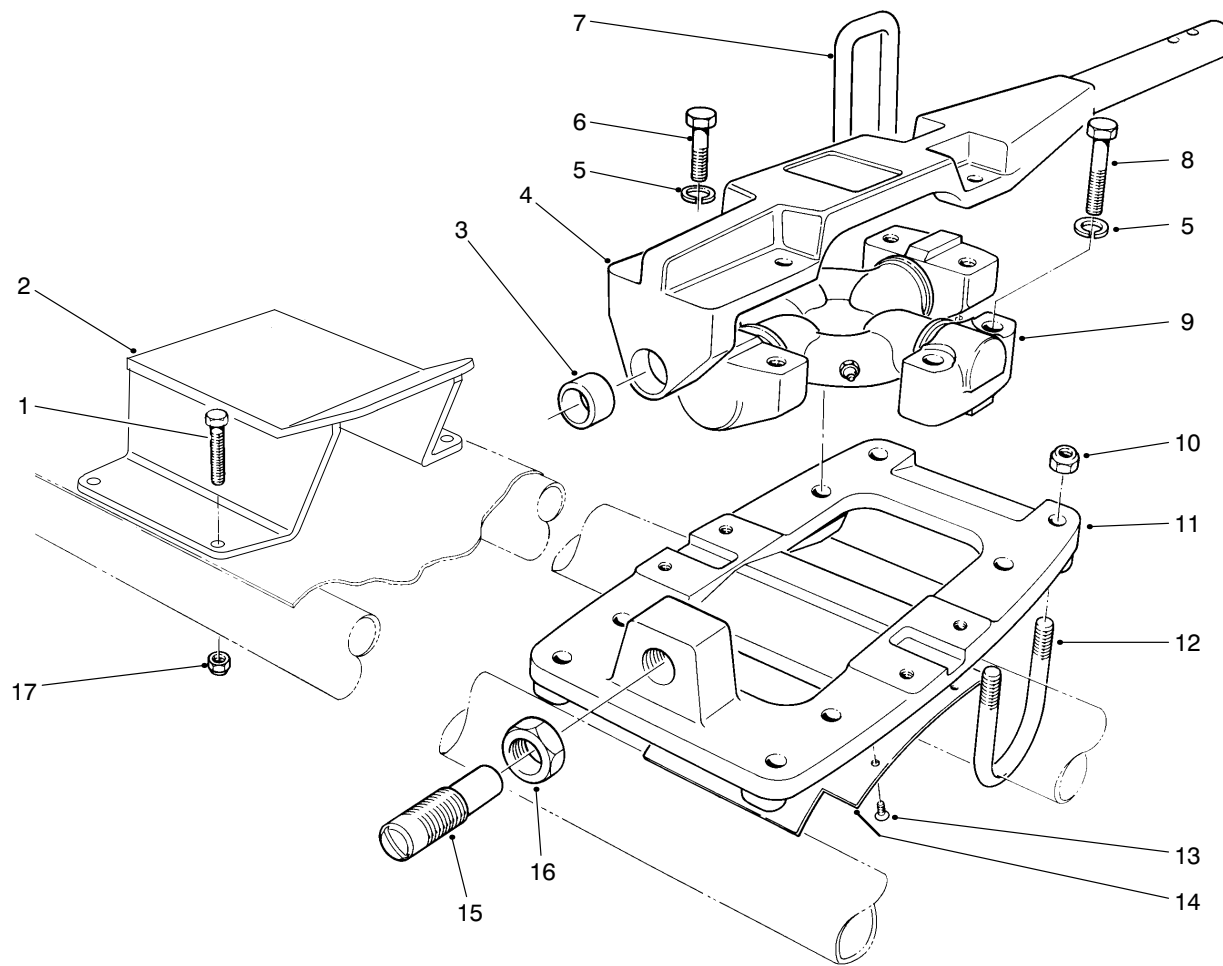
MODEL NO. 03640

**PARTS  
CATALOG****CUTTING UNIT FLOATATION KIT**  
For Reelmaster 335D & 3500D

T-1120-1

**CUTTING UNIT NO. 1 (CENTER) FLOATATION ASSEMBLY**

Ref. No.	Part No.	Description	No. Used	Ref. No.	Part No.	Description	No. Used
1	59-5880	Arm - Pivot	1	8	3218-7	Nut - Jam	1
2	3253-21	Washer - Lock	8	9	3296-29	Nut - Lock	8
3	3211-4	Screw - Cap Hex. Hd.	4	10	75-7660	Base - Pivot	1
4	256-311	Bushing - Sleeve	1	11	75-7770	Bolt - U	4
5	3211-8	Screw - Cap Hex. Hd.	4	12	32144-107	Screw	4
6	59-5910	Cross & Bearing Assembly	1	13	75-8100	Cover	1
7	59-5940	Pin - Lockout	1				



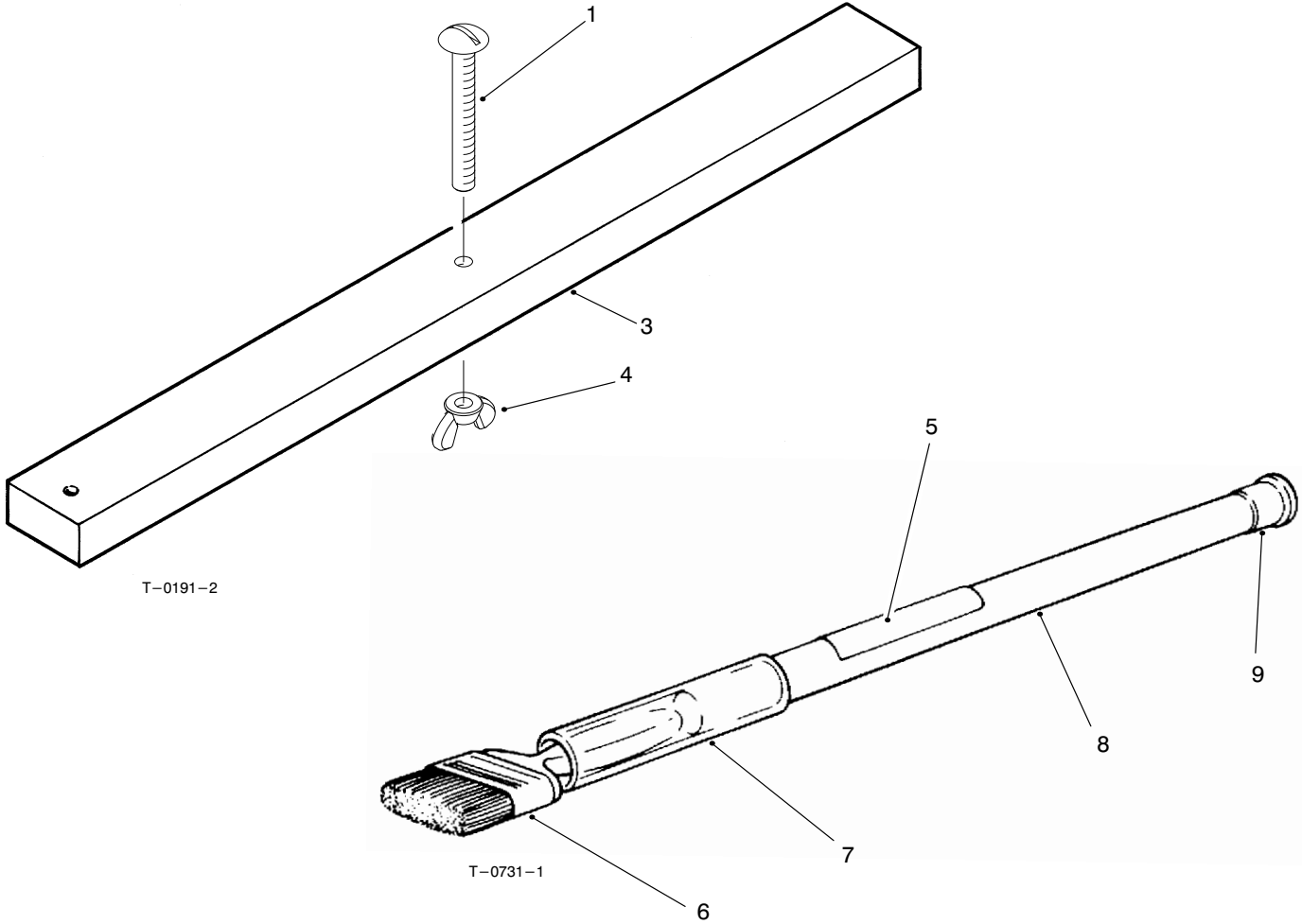
T-1121-1

## CUTTING UNIT NO. 2 (LH) & 3 (RH) FLOATION ASSEMBLIES

Ref. No.	Part No.	Description	No. Used
1	321-18	Screw - Cap Hex. Hd.	8
2	76-8390	Tipper - Reel	2
3	256-311	Bushing - Sleeve	2
4	59-5880	Arm - Pivot	2
5	3253-21	Washer - Lock	16
6	3211-4	Screw - Cap Hex. Hd.	8
7	76-6280	Bracket - Hose	1
8	3211-8	Screw - Cap Hex. Hd.	8
9	59-5910	Cross & Bearing Assembly	2

Ref. No.	Part No.	Description	No. Used
10	3296-29	Nut - Lock	16
11	75-7660	Base - Pivot	2
12	75-7770	Bolt - U	8
13	32144-107	Screw	8
14	75-8100	Cover	2
15	59-5940	Pin - Lockout	2
16	3218-7	Nut - Jam	2
17	3296-42	Nut - Lock	8
*	3290-378	Tie - Cable	1

\*Not Illustrated



**GAUGE BAR & BACKLAPPING BRUSH ASSEMBLIES**

Ref. No.	Part No.	Description	No. Used
1	32122-54	Screw – Slotted Truss Hd.	1
3	59-7900	Gauge Bar Assembly (Incl. Ref. #1-4)	1
4	32103-3	Nut – Wing	1
5	12-9140	Decal	1

Ref. No.	Part No.	Description	No. Used
6	36-4310	Brush	1
7	29-9090	Hose – Handle	1
8	29-9100	Backlapping Brush Assy. (Incl. Ref. #5-9)	1
9	2410-18	Plug	1

\*Not Illustrated

## PRODUCT CHANGES

In an effort to make improvements available to TORO owners as quickly as possible, minor changes are incorporated into Toro's products from time to time that do not become immediately shown in the Parts Catalog. If such a change has been made in your unit, which is not reflected in your manual, see your TORO Distributor or his Authorized TORO Service Dealer for information and part numbers.

## COUNTRIES OTHER THAN THE UNITED STATES OR CANADA

Customers who have purchased TORO products exported from the United States or Canada should contact their Toro Distributor (Dealer) to obtain guarantee policies for your country, province or state. If for any reason you

are dissatisfied with your Distributor's service or have difficulty obtaining guarantee information, contact the TORO importer. If all other remedies fail, you may contact us at The Toro Company.

# MAINTENANCE RECORD

[illegible]