



**Count on it.**

**Operator's Manual**

**Universal Frame  
Reelmaster® Gang Mowers**

Model No. 33145—Serial No. 404400001 and Up

Model No. 33155—Serial No. 404400001 and Up



# Introduction

This product complies with all relevant European directives, for details please see the separate product specific Declaration of Conformity (DOC) sheet.

These frames, when equipped with reel cutting units and mounted behind a traction unit are intended to be used by professional, hired operators in commercial applications. They are primarily designed for pulling reel cutting units to cut grass on well-maintained lawns in parks, sports fields, and on commercial grounds. Using this product for purposes other than its intended use could prove dangerous to you and bystanders.

Read this information carefully to learn how to operate and maintain your product properly and to avoid injury and product damage. You are responsible for operating the product properly and safely

Visit [www.Toro.com](http://www.Toro.com) for product safety and operation training materials, accessory information, help finding a dealer, or to register your product.

Whenever you need service, genuine Toro parts, or additional information, contact an Authorized Service Dealer or Toro Customer Service and have the model and serial numbers of your product ready. [Figure 1](#) identifies the location of the model and serial numbers on the product. Write the numbers in the space provided.

**Important:** With your mobile device, you can scan the QR code on the serial number plate (if equipped) to access warranty, parts, and other product information.

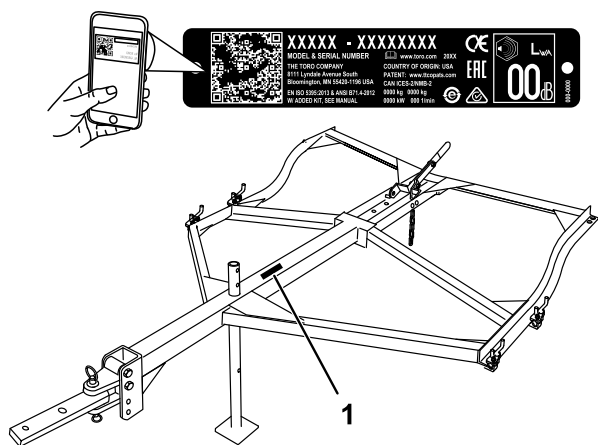


Figure 1

g289123

1. Model and serial number location

Model No. \_\_\_\_\_

Serial No. \_\_\_\_\_

This manual identifies potential hazards and has safety messages identified by the safety-alert symbol ([Figure 2](#)), which signals a hazard that may cause serious injury or death if you do not follow the recommended precautions.



Figure 2  
Safety-alert symbol

g000502

This manual uses 2 words to highlight information. **Important** calls attention to special mechanical information and **Note** emphasizes general information worthy of special attention.

# Contents

Safety .....	3
General Safety .....	3
Safety and Instructional Decals .....	3
Setup .....	4
1 Setting Up the Stationary Cutting Units.....	6
2 Installing the Wing Frames.....	6
3 Installing the Trailing Kits .....	7
4 Completing the Installation.....	8
Product Overview .....	9
Specifications .....	9
General Specifications.....	9
Before Operation .....	9
Before Operation Safety .....	9
Adjusting the Hitch Height.....	9
During Operation .....	10
During Operation Safety .....	10
Operating Tips .....	10
After Operation .....	11
After Operation Safety .....	11
Towing for Transport.....	11
Hauling the Machine.....	11
Maintenance .....	12
Recommended Maintenance Schedule(s) .....	12
Maintenance Safety.....	12
Lubricating the Machine.....	12
Inspecting the Frame.....	12
Storage .....	13
Storing the Machine.....	13

# Safety

## General Safety

- Read and understand the contents of both this *Operator's Manual* and the operator's manual of the traction unit before using this machine. Ensure that everyone using this product knows how to use this machine and the traction unit and understands the warnings.
- Use your full attention while operating the machine. Do not engage in any activity that causes distractions; otherwise, injury or property damage may occur.
- Do not put your hands or feet near moving components of the machine.
- Do not operate the machine without all guards and other safety protective devices in place and working on the machine.
- Keep children, bystanders, and pets out of the operating area. Never allow children to operate the machine.
- Always shut off the traction unit engine, remove the key (if equipped), and wait for all moving parts to stop, before adjusting, repairing, cleaning, or storing the machine.

Improperly using or maintaining this machine can result in injury. To reduce the potential for injury, comply with these safety instructions and always pay attention to the safety-alert symbol (▲), which means Caution, Warning, or Danger—personal safety instruction. Failure to comply with these instructions may result in personal injury or death.

## Safety and Instructional Decals



Safety decals and instructions are easily visible to the operator and are located near any area of potential danger. Replace any decal that is damaged or missing.

▲ WARNING: Cancer and Reproductive Harm - [www.P65Warnings.ca.gov](http://www.P65Warnings.ca.gov).  
For more information, please visit [www.ttcoCAProp65.com](http://www.ttcoCAProp65.com)

133-8061

decal133-8061

133-8061

# Setup

## Loose Parts

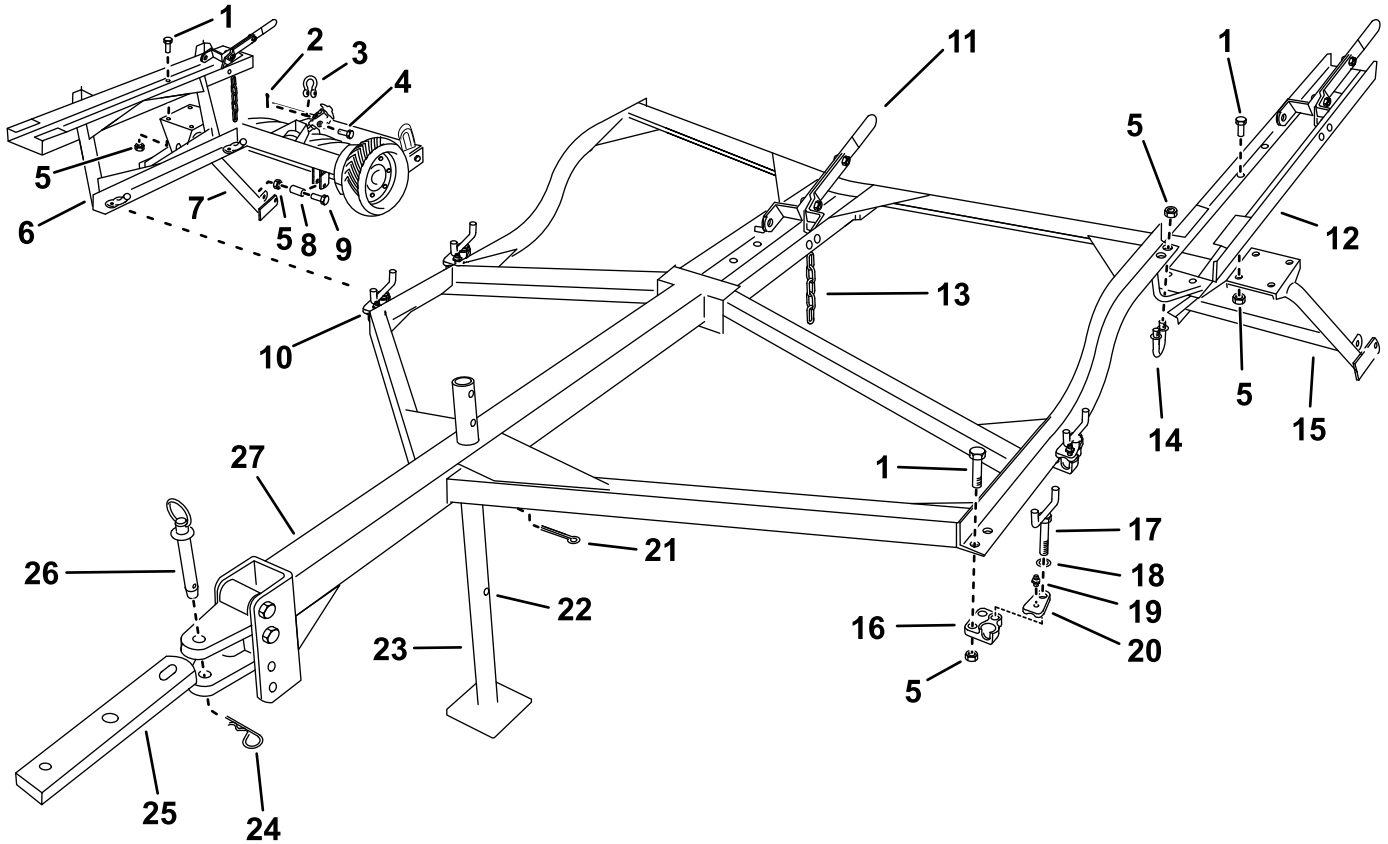
Use the chart below to verify that all parts have been shipped.

Procedure	Description	Qty.	Use
<b>1</b>	Frame support Large cotter pin Center frame Trailing frame Stationary drawbar Locknut (1/2 inch) Spacer Bolt (1/2 x 2-1/2 inches) Bolt (1/2 x 1-1/4 inches) Small cotter pin Shackle Clevis pin U-bolt	1 1 1 2 1 10 2 2 4 1 1 1 2	Set up the stationary cutting units.
<b>2</b>	Left wing frame assembly Right wing frame assembly Locknut (1/2 inch) Bolts (1/2 x 1-1/4 inches) Small cotter pin Left hinge socket Right hinge socket Grease fitting Lock washer Hinge clamp bolt Hinge cap	2 2 8 8 4 2 2 4 4 4 4	Install the wing frames.
<b>3</b>	No parts required	–	Install the trailing kits.
<b>4</b>	Hitch extension Hitch pin Hairpin	1 1 1	Complete the installation.

## Media and Additional Parts

Description	Qty.	Use
Operator's Manual	1	Read before operating.

**Note:** Determine the left and right sides of the machine from the normal operating position.



**Figure 3**

g289206

- |                            |                              |                        |                           |
|----------------------------|------------------------------|------------------------|---------------------------|
| 1. Bolt (1/2 x 1-1/4 inch) | 8. Spacer                    | 15. Stationary drawbar | 22. Storage position hole |
| 2. Small cotter pin        | 9. Bolt (1/2 x 2-1/2 inches) | 16. Right hinge socket | 23. Frame support         |
| 3. Shackle                 | 10. Left hinge socket        | 17. Hinge clamp bolt   | 24. Hairpin               |
| 4. Clevis pin              | 11. Lift handle              | 18. Lock washer        | 25. Hitch extension       |
| 5. Nut (1/2 inch)          | 12. Trailing frame           | 19. Grease fitting     | 26. Hitch pin             |
| 6. Wing frame              | 13. Lift chain               | 20. Hinge cap          | 27. Center frame          |
| 7. Pivoting drawbar        | 14. U-bolt                   | 21. Large cotter pin   |                           |

# 1

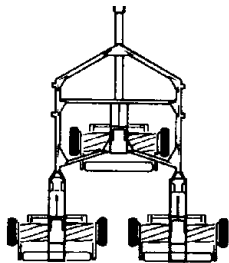
## Setting Up the Stationary Cutting Units

### Model 33145 for 3 Cutting Units

**Parts needed for this procedure:**

1	Frame support
1	Large cotter pin
1	Center frame
2	Trailing frame
1	Stationary drawbar
10	Locknut (1/2 inch)
2	Spacer
2	Bolt (1/2 x 2-1/2 inches)
4	Bolt (1/2 x 1-1/4 inches)
1	Small cotter pin
1	Shackle
1	Clevis pin
2	U-bolt

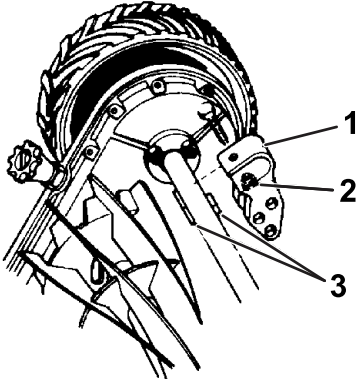
**Procedure**



**Figure 4**

g289135

**Note:** If you are attaching Spartan cutting units, drawbar clamps (sold separately, Part No. 5-1090) and mounting fasteners will be required to mount the drawbar to crossbar of the cutting unit (Figure 5). Contact your local authorized Toro distributor to order parts or for assistance.



**Figure 5**

g289158

1. Drawbar clamp
  2. Nut pocket
  3. Pads
- 
4. Align the mounting holes in the stationary drawbar to holes in the center frame.
  5. Install a lift chain to each cutting unit with a small cotter pin, shackle, and clevis pin.
  6. Connect a trailing frame to both rear corners of the center frame with a U-bolt and 2 locknuts (1/2 inch).

1. Secure the frame support to the center frame with the large cotter pin.
2. Align the brackets on each the stationary drawbar with the brackets on a cutting unit crossbar.
3. With the bolt heads facing the inside of the drawbar, secure both sides of the drawbar to a crossbar bracket with a bolt (1/2 x 2-1/2 inches), spacer, and locknut (1/2 inch).

# 2

## Installing the Wing Frames

### Model 33155 for 5 Cutting Units

#### Parts needed for this procedure:

2	Left wing frame assembly
2	Right wing frame assembly
8	Locknut (1/2 inch)
8	Bolts (1/2 x 1-1/4 inches)
4	Small cotter pin
2	Left hinge socket
2	Right hinge socket
4	Grease fitting
4	Lock washer
4	Hinge clamp bolt
4	Hinge cap

#### Procedure

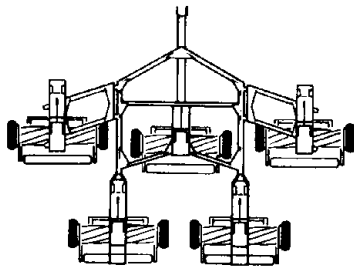


Figure 6

g289136

1. Align the brackets on each pivoting drawbar with the brackets on a cutting unit crossbar.
2. With the bolt heads facing the inside of the drawbar, secure both sides of each drawbar to a crossbar bracket with a bolt (1/2 x 2-1/2 inches), spacer, and locknut (1/2 inch).
3. Attach 2 left and 2 right hinge sockets to the respective sides of the center frame with bolts (1/2 x 1-1/4 inches) and locknuts (1/2 inch).
4. Install a grease fitting, lock washer, and hinge clamp bolt into each hinge cap.
5. Move the wing frames into position so the hinge balls are inserted into the hinge sockets.

6. Position the hinge caps over hinge balls, tighten the hinge clamp bolts, and secure the hinge clamp with a small cotter pin.

# 3

## Installing the Trailing Kits

### Not Included

#### No Parts Required

#### Procedure

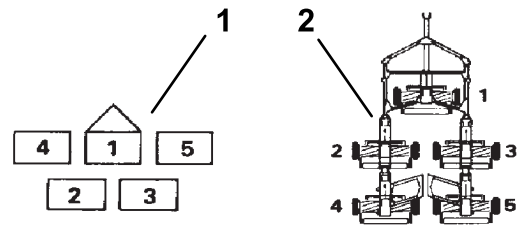


Figure 7

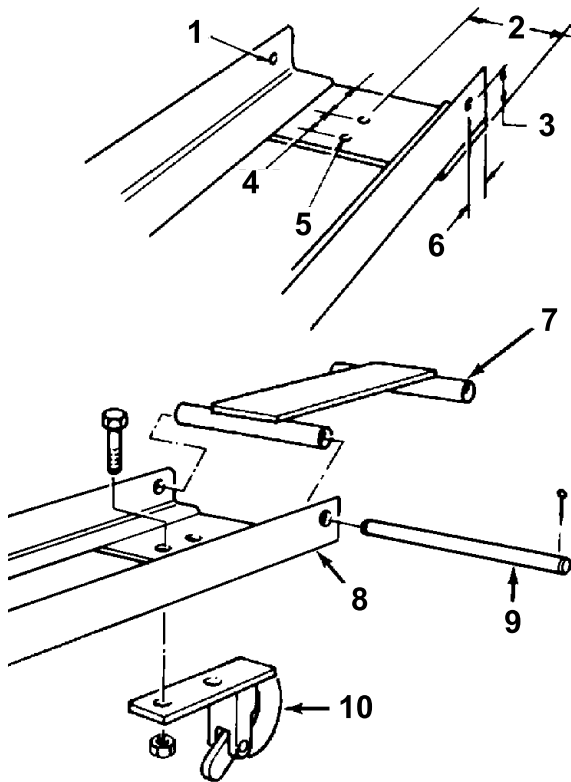
g289159

1. Mowing position
2. Trailing position

The optional trailing hitch provides tool-free snap hook and attachment fasteners, used in place of the U-bolt attachment. This feature allows the frame sections to be placed and track within a 2.4 m (8 ft) width for transport purposes or when narrow areas must be mowed; for more info contact your authorized Toro distributor.

1. Locate and drill the required mounting holes in the trailing and wing units as shown in Figure 9.
2. Install the kit parts to trailing unit by mounting the trailing bar to the rear of the frames with the hinge pin and 2 cotter pins.

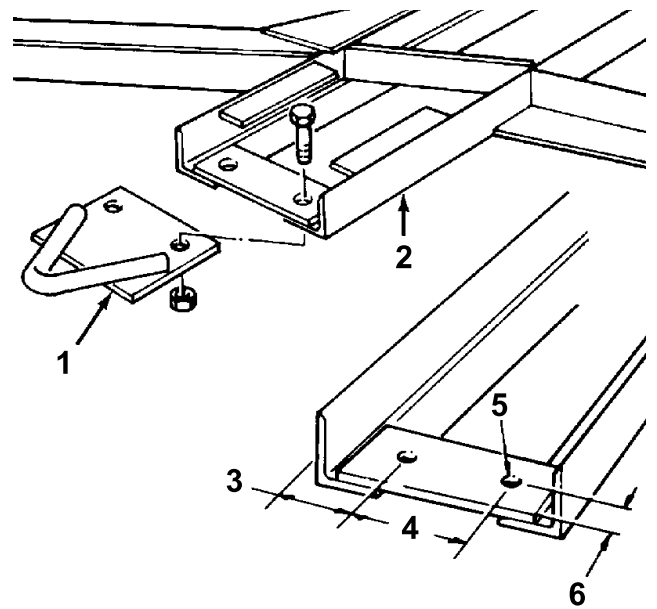
**Note:** Before drilling, use the snap hook as a template to verify the placement of the holes.



**Figure 8**

1. Drill a 1.59 cm (5/8 inch) diameter hole here.
2. 6.35 cm (2-1/2 inches)
3. 2.2 cm (7/8 inch)
4. 5 cm (2 inches)
5. Drill a 13.5 cm (17/32 inch) diameter hole here.
6. 1.9 cm (3/4 inch)
7. Trailing bar
8. Trailing unit
9. Hitch pin
10. Snap hook

g289161



**Figure 9**

1. Trailing hitch
2. Wing frame
3. 3.5 cm (1-3/8 inches)
4. 7 cm (2-3/4 inches)
5. Drill a 13.5 cm (17/32 inch) diameter hole here.
6. 1.9 cm (3/4 inch)

g289160

5. Pull the entire trailing unit forward and insert the bar under the 2 welded plates on the frame; pull the unit back, snapping the hitch into the snap hook.

# 4

## Completing the Installation

### Parts needed for this procedure:

1	Hitch extension
1	Hitch pin
1	Hairpin

### Procedure

1. Attach the hitch extension to the machine with the hitch pin and hairpin.
2. Drill mounting holes in the hitch extension to accommodate the traction unit hitch.
3. Attach the machine to your traction unit; refer to your traction unit *Operator's Manual*.
4. Lubricate all moving parts of the frame; refer to [Lubricating the Machine \(page 12\)](#).



# Product Overview

## Specifications

### General Specifications

Cutting Units	3	5
Width of Cut	Approximately 2.1 m (7 ft)	Approximately 3.4 m (11 ft)
Overall Width — Mowers with Iron Wheels	2.4 m (94 inches)	3.8 m (148 inches)
Overall Width — Mowers with Rubber Wheels	2.5 m (98 inches)	3.9 m (152 inches)
Overall Length	3.0 m (10 ft)	
Cutting Unit Types	Reelmaster Cutting Unit or Spartan Cutting Unit. The spartan cutting unit requires 2 drawbar clamps (Part No. 5–1090) and fasteners per unit.	
Frame	Welded, fabricated construction, with structural sections and tubing. Flexible attachment allows mowers to follow contour of terrain; ball socket hinge joints for the number 4 and 5 wing units, with other units utilizing a U-Bolt and eyelet for positive attachment. Conversion kits available to expand frame for 3 to 5 and 5 to 7 cutting units. Each cutting unit rear roller may be raised from ground, for transport. Stand provided, at coupler, for easy attachment to tow tractor. Cutting units may be used with 14-inch to 18-inch diameter wheels.	
Optional Ball Coupler Kit (Part No. 53–9760)	A ball type coupler assembly and ball, rated for 9,900 lb capacity. The coupler bolts directly to the frame and replaces the standard clevis type hitch.	

# Operation

**Note:** Determine the left and right sides of the machine from the normal operating position.

## Before Operation

### Before Operation Safety

#### General Safety

- Never allow children or untrained people to operate or service the machine. Local regulations may restrict the age of the operator. The owner is responsible for training all operators and mechanics.
- Become familiar with the safe operation of the equipment, operator controls, and safety signs.
- Always shut off the traction unit engine, remove the key, and wait for all moving parts to stop before adjusting, repairing, cleaning, or storing the machine. Know how to stop the traction unit and shut off the engine quickly.
- Keep all guards, safety devices, and decals in place. Repair or replace all safety devices. Do not operate the machine unless they are present and functioning properly.
- Ensure that the traction unit is suitable for use with an implement of this weight by checking with the traction unit supplier or manufacturer.
- Do not modify this equipment in any manner.

## Adjusting the Hitch Height

1. Ensure that the frame is located on a level surface and the frame support is adjusted to level the frame.
2. Gauge the difference in height between the frame hitch and the traction unit hitch.
3. If the frame hitch height must be changed, remove the bolts and locknuts securing the hitch to the frame. Move the hitch to one of the other settings or, if these settings do not exactly match, a more optimal adjustment may be achieved by rotating the hitch 180°.
4. Secure the hitch extension to the frame hitch with the hitch pin and hairpin.
5. Move the frame support to the storage position; remove the cotter pin securing the frame support to the frame hitch, push the frame support up through the hitch and secure it to the hitch.

# ***During Operation***

## **During Operation Safety**

### **General Safety**

- The owner/operator can prevent and is responsible for accidents that may cause personal injury or property damage.
- Wear appropriate clothing, including eye protection; long pants; substantial, slip-resistant footwear; and hearing protection. Tie back long hair and do not wear loose jewelry or loose clothing.
- Do not operate the machine while ill, tired, or under the influence of alcohol or drugs.
- Use your full attention while operating the machine. Do not engage in any activity that causes distractions; otherwise, injury or property damage may occur.
- Keep all bystanders out of the operating area.
- Do not carry passengers on the machine and keep bystanders and pets away from the machine during operation.
- Operate the machine only in good visibility to avoid holes or hidden hazards.
- Look behind and down before backing up to be sure of a clear path.
- Use care when approaching blind corners, shrubs, trees, or other objects that may obscure your vision.
- When transporting the machine on public roads, follow all traffic regulations and use any additional accessories that may be required by law, such as lights, turn signals, slow-moving vehicle (SMV) signs, and others as required.
- Reduce speed when operating on rough, uneven terrain, and near curbs, holes, and other sudden changes in terrain.
- To avoid causing the machine to tip over, be careful when turning and avoid unsafe maneuvers.

### **Slope Safety**

- Slopes are a major factor related to loss of control and rollover accidents, which can result in severe injury or death. You are responsible for safe slope operation. Operating the machine on any slope requires extra caution.
- Review the traction unit specifications to ensure that you do not exceed its slope capabilities.

- Evaluate the site conditions to determine if the slope is safe for machine operation, including surveying the site. Always use common sense and good judgment when performing this survey.
- Review the slope instructions, listed below, for operating the machine on slopes. Before you operate the machine, review the site conditions to determine whether you can operate the machine in the conditions on that day and at that site. Changes in the terrain can result in a change in slope operation for the machine.
  - Avoid starting, stopping, or turning the machine on slopes. Avoid making sudden changes in speed or direction. Make turns slowly and gradually.
  - Do not operate a machine under any conditions where traction, steering, or stability is in question.
  - Remove or mark obstructions such as ditches, holes, ruts, bumps, rocks, or other hidden hazards. Tall grass can hide obstructions. Uneven terrain could overturn the machine.
  - Be aware that operating the machine on wet grass, across slopes, or downhill may cause the machine to lose traction.
  - Use extreme caution when operating the machine near drop-offs, ditches, embankments, water hazards, or other hazards. The machine could suddenly roll over if a wheel goes over the edge or the edge caves in. Establish a safety area between the machine and any hazard.

## **Operating Tips**

***Important:* Do not back up the traction unit with the frame attached. If the machine must be backed up, each trailing and wing cutting unit must be removed and manually repositioned. Failure to do so will result in damage to frame.**

- Do not exceed 6 mph (9.7 km/h) ground speed or quality of cut will be greatly reduced and damage to the frame and cutting units may occur.
- The best quality of cut is achieved while operating at approximately 4 to 6 mph (6.4 to 9.7 km/h).
- Reduce ground speed when turning to ensure that the outer mowers do not bounce and skip on the turf.

# After Operation

## After Operation Safety

### General Safety

- Park the traction unit and machine on a firm, level surface; shut off the engine, remove the key, and wait for all moving parts to stop before adjusting, repairing, cleaning, or storing the machine.
- Only disconnect the machine from the traction unit while on a level surface.
- When disconnecting the machine, always chock the wheels to prevent movement.
- Keep all parts of the machine in good working condition and all hardware tightened.
- Replace all worn, damaged, or missing decals.

### Towing Safety

- Before towing the machine, check with your local county or state safety towing regulations, in addition to meeting Department of Transportation (DOT) Safety Towing Regulations.
- Tow only with a machine that has a hitch designed for towing. Do not attach towed equipment except at the hitch point.
- Always inspect the hitch and coupling for wear. Do not tow the machine with damaged or missing hitches or couplings.
- Avoid sudden stops and starts. This can cause skidding or jack knifing. Smooth, gradual starts and stops will improve towing.
- Avoid sharp turns to prevent rolling.
- Chock the wheels to while parked to prevent movement.

## Towing for Transport

1. Disengage the mower reels by rotating the reel throwout knobs outward; refer to the *Operators Manual* for the cutting units.
2. Grasp the handle grip of the lift handles on the frame and rotate each handle 180° forward. This will raise the cutting units off the ground.

## Hauling the Machine

- Use care when loading or unloading the machine into a trailer or truck.
- Use full-width ramps for loading machine into trailer or truck.
- Tie the machine down securely using straps, chains, cable, or ropes. Both front and rear straps should be directed down and outward from the machine.

# Maintenance

## ⚠ CAUTION

Failure to properly maintain the machine could result in premature failure of machine systems causing possible harm to you or bystanders.

Keep the machine well maintained and in good working order as indicated in these instructions.

**Note:** Determine the left and right sides of the machine from the normal operating position.

## Recommended Maintenance Schedule(s)

Maintenance Service Interval	Maintenance Procedure
After each use	<ul style="list-style-type: none"><li>• Lubricate the machine.</li></ul>
Every 40 hours	<ul style="list-style-type: none"><li>• Inspect the frame.</li></ul>

## Maintenance Safety

- Before cleaning, servicing, or adjusting the machine, do the following:
  - Park the traction unit and machine on a level surface.
  - Shut off the traction unit engine, remove the key, and wait for all moving parts to stop.
  - Chock the wheels.
  - Remove the machine from the traction unit.
- Perform only those maintenance instructions described in this manual. If major repairs are ever needed or you need assistance, contact an authorized Toro distributor.
- Support the machine with blocks or jack stands when working beneath it.
- Ensure that all guards are installed securely after maintaining or adjusting the machine.
- Do not allow untrained personnel to service the machine.
- Keep all parts in good working condition and all fasteners tightened. Replace all damaged or missing decals.
- Do not interfere with the intended function of a safety device or reduce the protection provided by a safety device. Check their proper operation regularly.
- Altering this machine in any manner may affect the operation of the machine, performance, durability, or its use may result in injury or death. Such use could void the product warranty of The Toro® Company.

## Lubricating the Machine

**Service Interval:** After each use

1. Wipe clean each ball socket and drawbar pivot fitting with a clean, dry rag.
2. Apply No. 2 lithium grease until clean grease appears around the ball socket openings or around the pivot shafts of the drawbars.
3. Wipe away any excess grease.

## Inspecting the Frame

**Service Interval:** Every 40 hours

1. Check the frame for any loose or missing parts.
2. Tighten any loose parts and repair or replace any broken or missing parts as necessary.

# Storage

## Storing the Machine

1. Complete the procedure at the start of [Maintenance Safety \(page 12\)](#).
2. Remove grass clippings, dirt, and grime from the external parts of the entire machine.

***Important:*** You can wash the machine with mild detergent and water. Do not pressure wash the machine. Avoid excessive use of water.

3. Check and tighten all fasteners. Repair or replace any part that is damaged or missing.
4. Paint all scratched or bare metal surfaces. Paint is available from your authorized Toro distributor.
5. Store the machine in a clean, dry garage or storage area. Cover the machine to protect it and keep it clean.

## EEA/UK Privacy Notice

### **Toro's Use of Your Personal Information**

The Toro Company ("Toro") respects your privacy. When you purchase our products, we may collect certain personal information about you, either directly from you or through your local Toro company or dealer. Toro uses this information to fulfil contractual obligations - such as to register your warranty, process your warranty claim or to contact you in the event of a product recall - and for legitimate business purposes - such as to gauge customer satisfaction, improve our products or provide you with product information which may be of interest. Toro may share your information with our subsidiaries, affiliates, dealers or other business partners in connection these activities. We may also disclose personal information when required by law or in connection with the sale, purchase or merger of a business. We will never sell your personal information to any other company for marketing purposes.

### **Retention of your Personal Information**

Toro will keep your personal information as long as it is relevant for the above purposes and in accordance with legal requirements. For more information about applicable retention periods please contact [legal@toro.com](mailto:legal@toro.com).

### **Toro's Commitment to Security**

Your personal information may be processed in the US or another country which may have less strict data protection laws than your country of residence. Whenever we transfer your information outside of your country of residence, we will take legally required steps to ensure that appropriate safeguards are in place to protect your information and to make sure it is treated securely.

### **Access and Correction**

You may have the right to correct or review your personal data, or object to or restrict the processing of your data. To do so, please contact us by email at [legal@toro.com](mailto:legal@toro.com). If you have concerns about the way in which Toro has handled your information, we encourage you to raise this directly with us. Please note that European residents have the right to complain to your Data Protection Authority.

# California Proposition 65 Warning Information

## What is this warning?

You may see a product for sale that has a warning label like the following:



**WARNING: Cancer and Reproductive Harm—[www.p65Warnings.ca.gov](http://www.p65Warnings.ca.gov).**

## What is Prop 65?

Prop 65 applies to any company operating in California, selling products in California, or manufacturing products that may be sold in or brought into California. It mandates that the Governor of California maintain and publish a list of chemicals known to cause cancer, birth defects, and/or other reproductive harm. The list, which is updated annually, includes hundreds of chemicals found in many everyday items. The purpose of Prop 65 is to inform the public about exposure to these chemicals.

Prop 65 does not ban the sale of products containing these chemicals but instead requires warnings on any product, product packaging, or literature with the product. Moreover, a Prop 65 warning does not mean that a product is in violation of any product safety standards or requirements. In fact, the California government has clarified that a Prop 65 warning "is not the same as a regulatory decision that a product is 'safe' or 'unsafe.'" Many of these chemicals have been used in everyday products for years without documented harm. For more information, go to <https://oag.ca.gov/prop65/faqs-view-all>.

A Prop 65 warning means that a company has either (1) evaluated the exposure and has concluded that it exceeds the "no significant risk level"; or (2) has chosen to provide a warning based on its understanding about the presence of a listed chemical without attempting to evaluate the exposure.

## Does this law apply everywhere?

Prop 65 warnings are required under California law only. These warnings are seen throughout California in a wide range of settings, including but not limited to restaurants, grocery stores, hotels, schools, and hospitals, and on a wide variety of products. Additionally, some online and mail order retailers provide Prop 65 warnings on their websites or in catalogs.

## How do the California warnings compare to federal limits?

Prop 65 standards are often more stringent than federal and international standards. There are various substances that require a Prop 65 warning at levels that are far lower than federal action limits. For example, the Prop 65 standard for warnings for lead is 0.5 µg/day, which is well below the federal and international standards.

## Why don't all similar products carry the warning?

- Products sold in California require Prop 65 labelling while similar products sold elsewhere do not.
- A company involved in a Prop 65 lawsuit reaching a settlement may be required to use Prop 65 warnings for its products, but other companies making similar products may have no such requirement.
- The enforcement of Prop 65 is inconsistent.
- Companies may elect not to provide warnings because they conclude that they are not required to do so under Prop 65; a lack of warnings for a product does not mean that the product is free of listed chemicals at similar levels.

## Why does Toro include this warning?

Toro has chosen to provide consumers with as much information as possible so that they can make informed decisions about the products they buy and use. Toro provides warnings in certain cases based on its knowledge of the presence of one or more listed chemicals without evaluating the level of exposure, as not all the listed chemicals provide exposure limit requirements. While the exposure from Toro products may be negligible or well within the "no significant risk" range, out of an abundance of caution, Toro has elected to provide the Prop 65 warnings. Moreover, if Toro does not provide these warnings, it could be sued by the State of California or by private parties seeking to enforce Prop 65 and subject to substantial penalties.



# The Toro Warranty

Two-Year or 1,500 Hours Limited Warranty

## Conditions and Products Covered

The Toro Company and its affiliate, Toro Warranty Company, pursuant to an agreement between them, jointly warrant your Toro Commercial product ("Product") to be free from defects in materials or workmanship for 2 years or 1,500 operational hours\*, whichever occurs first. This warranty is applicable to all products with the exception of Aerators (refer to separate warranty statements for these products). Where a warrantable condition exists, we will repair the Product at no cost to you including diagnostics, labor, parts, and transportation. This warranty begins on the date the Product is delivered to the original retail purchaser.

\* Product equipped with an hour meter.

## Instructions for Obtaining Warranty Service

You are responsible for notifying the Commercial Products Distributor or Authorized Commercial Products Dealer from whom you purchased the Product as soon as you believe a warrantable condition exists. If you need help locating a Commercial Products Distributor or Authorized Dealer, or if you have questions regarding your warranty rights or responsibilities, you may contact us at:

Toro Commercial Products Service Department  
Toro Warranty Company  
8111 Lyndale Avenue South  
Bloomington, MN 55420-1196  
952-888-8801 or 800-952-2740  
E-mail: commercial.warranty@toro.com

## Owner Responsibilities

As the product owner, you are responsible for required maintenance and adjustments stated in your *Operator's Manual*. Repairs for product issues caused by failure to perform required maintenance and adjustments are not covered under this warranty.

## Items and Conditions Not Covered

Not all product failures or malfunctions that occur during the warranty period are defects in materials or workmanship. This warranty does not cover the following:

- Product failures which result from the use of non-Toro replacement parts, or from installation and use of add-on, or modified non-Toro branded accessories and products.
- Product failures which result from failure to perform recommended maintenance and/or adjustments.
- Product failures which result from operating the Product in an abusive, negligent, or reckless manner.
- Parts consumed through use that are not defective. Examples of parts which are consumed, or used up, during normal Product operation include, but are not limited to, brake pads and linings, clutch linings, blades, reels, rollers and bearings (sealed or greasable), bed knives, spark plugs, castor wheels and bearings, tires, filters, belts, and certain sprayer components such as diaphragms, nozzles, and check valves.
- Failures caused by outside influence, including, but not limited to, weather, storage practices, contamination, use of unapproved fuels, coolants, lubricants, additives, fertilizers, water, or chemicals.
- Failure or performance issues due to the use of fuels (e.g. gasoline, diesel, or biodiesel) that do not conform to their respective industry standards.
- Normal noise, vibration, wear and tear, and deterioration. Normal "wear and tear" includes, but is not limited to, damage to seats due to wear or abrasion, worn painted surfaces, scratched decals or windows.

## Countries Other than the United States or Canada

Customers who have purchased Toro products exported from the United States or Canada should contact their Toro Distributor (Dealer) to obtain guarantee policies for your country, province, or state. If for any reason you are dissatisfied with your Distributor's service or have difficulty obtaining guarantee information, contact your Authorized Toro Service Center.

## Parts

Parts scheduled for replacement as required maintenance are warranted for the period of time up to the scheduled replacement time for that part. Parts replaced under this warranty are covered for the duration of the original product warranty and become the property of Toro. Toro will make the final decision whether to repair any existing part or assembly or replace it. Toro may use remanufactured parts for warranty repairs.

## Deep Cycle and Lithium-Ion Battery Warranty

Deep cycle and Lithium-Ion batteries have a specified total number of kilowatt-hours they can deliver during their lifetime. Operating, recharging, and maintenance techniques can extend or reduce total battery life. As the batteries in this product are consumed, the amount of useful work between charging intervals will slowly decrease until the battery is completely worn out. Replacement of worn out batteries, due to normal consumption, is the responsibility of the product owner. Note: (Lithium-Ion battery only): Pro-rated after 2 years. Refer to the battery warranty for additional information.

## Lifetime Crankshaft Warranty (ProStripe 02657 Model Only)

The ProStripe which is fitted with a genuine Toro Friction Disc and Crank-Safe Blade Brake Clutch (integrated Blade Brake Clutch (BBC) + Friction Disc assembly) as original equipment and used by the original purchaser in accordance with recommended operating and maintenance procedures, are covered by a Lifetime Warranty against engine crankshaft bending. Machines fitted with friction washers, Blade Brake Clutch (BBC) units and other such devices are not covered by the Lifetime Crankshaft Warranty.

## Maintenance is at Owner's Expense

Engine tune-up, lubrication, cleaning and polishing, replacement of filters, coolant, and completing recommended maintenance are some of the normal services Toro products require that are at the owner's expense.

## General Conditions

Repair by an Authorized Toro Distributor or Dealer is your sole remedy under this warranty.

**Neither The Toro Company nor Toro Warranty Company is liable for indirect, incidental or consequential damages in connection with the use of the Toro Products covered by this warranty, including any cost or expense of providing substitute equipment or service during reasonable periods of malfunction or non-use pending completion of repairs under this warranty. Except for the Emissions warranty referenced below, if applicable, there is no other express warranty. All implied warranties of merchantability and fitness for use are limited to the duration of this express warranty.**

Some states do not allow exclusions of incidental or consequential damages, or limitations on how long an implied warranty lasts, so the above exclusions and limitations may not apply to you. This warranty gives you specific legal rights, and you may also have other rights which vary from state to state.

## Note Regarding Emissions Warranty

The Emissions Control System on your Product may be covered by a separate warranty meeting requirements established by the U.S. Environmental Protection Agency (EPA) and/or the California Air Resources Board (CARB). The hour limitations set forth above do not apply to the Emissions Control System Warranty. Refer to the Engine Emission Control Warranty Statement supplied with your product or contained in the engine manufacturer's documentation.