



## Windshield Kit

### Workman® HD Series Utility Vehicle with Canopy

Model No. 07405

Model No. 07406

Form No. 3432-292 Rev A

## Installation Instructions

# Installation

# 1

## Preparing the Machine

No Parts Required

### Procedure

1. Park the machine on a level surface.
2. Engage the parking brake.
3. Shut off the engine and remove the key.

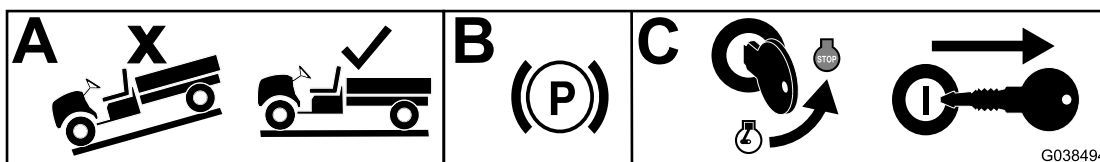


Figure 1

g038494



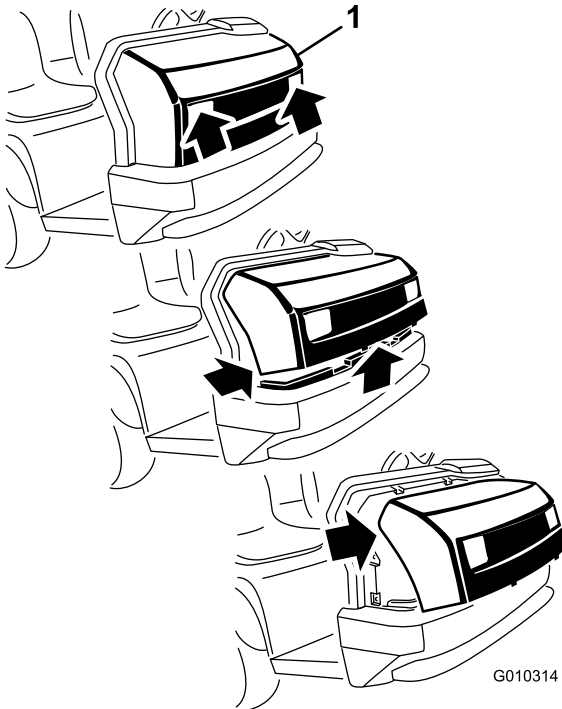
# 2

## Removing the Hood

No Parts Required

### Procedure

1. While grasping the hood in the headlight openings, lift up the hood to release the lower mounting tabs from the frame slots ([Figure 2](#)).



**Figure 2**

g010314

1. Hood
- 
2. Pivot the bottom of the hood upward until you can pull the top mounting tabs from the frame slots ([Figure 2](#)).
  3. Pivot the top of the hood forward and unplug the wire connectors from the headlights ([Figure 2](#)).
  4. Remove the hood.

# 3

## Drilling the Dash

No Parts Required

### Procedure

Drill a hole (9.5 mm or 3/8 inch) in the dash centered at the passenger side cup holder using the dimensions shown in [Figure 3](#).

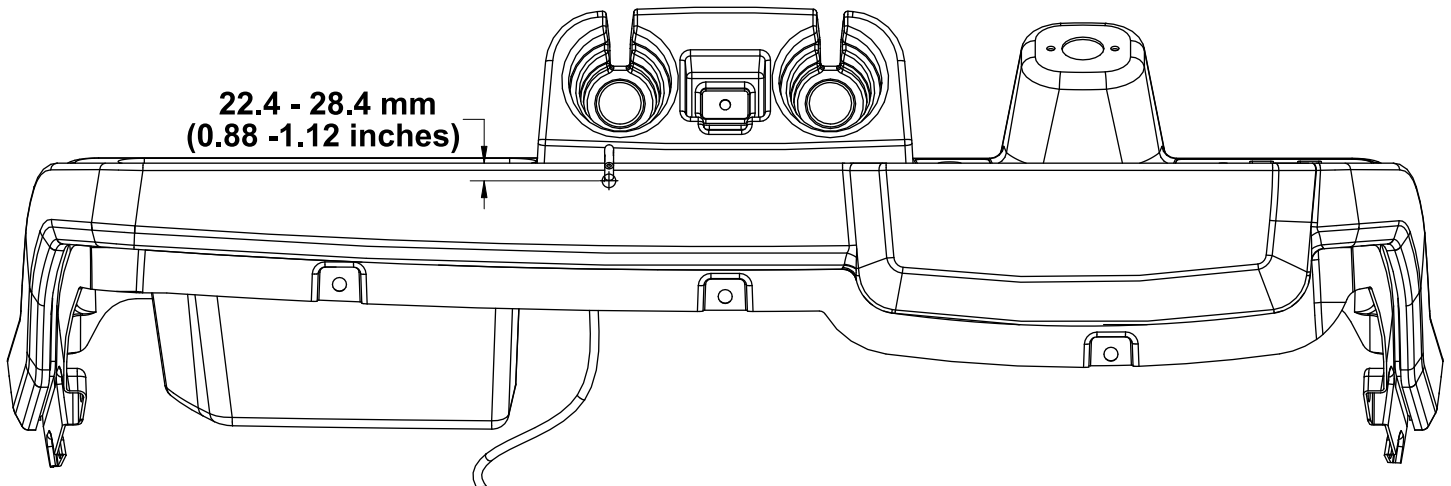


Figure 3

g255019

# 4

## Drilling the Canopy Support Tubes

No Parts Required

### Procedure

1. Measure down 4.6 mm (0.18 inch) from the existing hole (9.9 mm or 0.391 inch) in the canopy support tube (Figure 4).
2. Drill the first hole (7.1 mm or 0.281 inch) in the canopy support tube (Figure 4).  
Ensure that you drill through both walls of the canopy support tube.
3. Measure 57 mm (2-1/4 inches) up from the hole you drilled, and drill the second hole (7.1 mm or 0.281 inch) in the canopy support tube (Figure 4).  
Ensure that you drill through both walls of the canopy support tube.
4. Repeat this procedure on the other side of the machine.

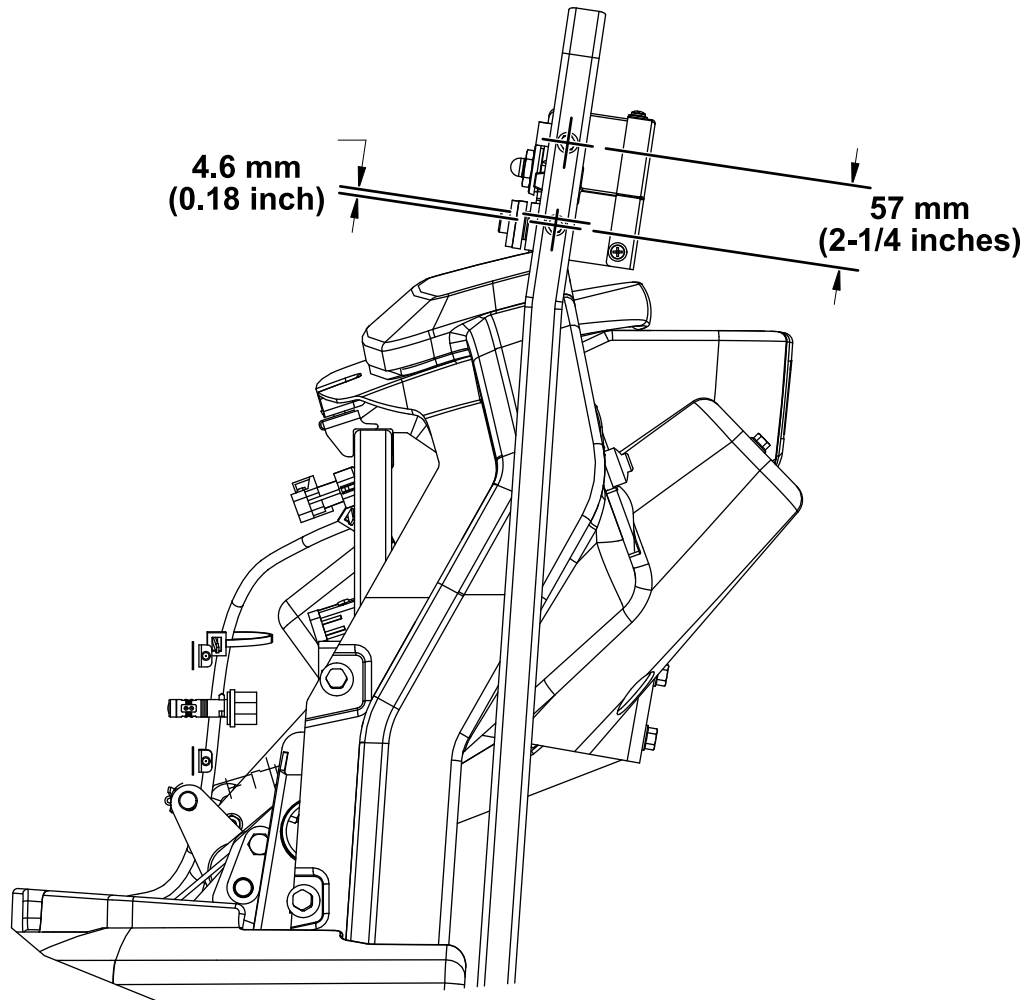


Figure 4

g255050

# 5

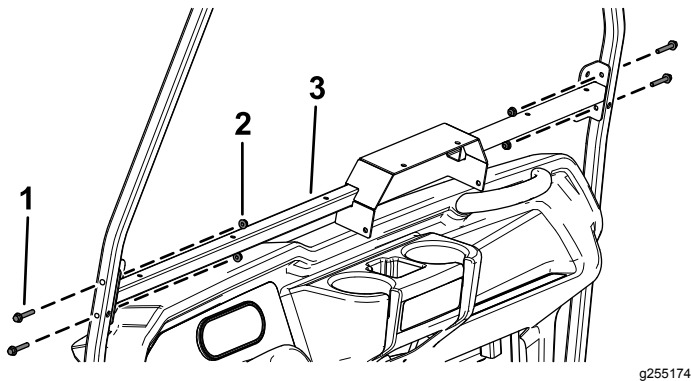
## Installing the Windshield Support Assembly

Parts needed for this procedure:

1	Windshield support assembly
4	Flange-head bolt (1/4 x 1-1/2 inches)
4	Locknut (1/4 inch)

### Procedure

Secure the windshield support assembly to the canopy support tubes using 4 flange-head bolts (1/4 x 1-1/2 inches) and 4 locknuts (1/4 inch) as shown in [Figure 5](#).



**Figure 5**

- |                                          |                                |
|------------------------------------------|--------------------------------|
| 1. Flange-head bolt (1/4 x 1-1/2 inches) | 3. Windshield support assembly |
| 2. Locknut (1/4 inch)                    |                                |

# 6

## Install the Pads and Rubber Bumpers

Parts needed for this procedure:

2	Rubber bumper
9	Pad

### Procedure

Apply the 9 pads to the motor mount bracket, windshield support, and canopy support tubes using the measurements shown in [Figure 6](#).

Install the 2 rubber bumpers into the top holes on the windshield support assembly ([Figure 6](#)).

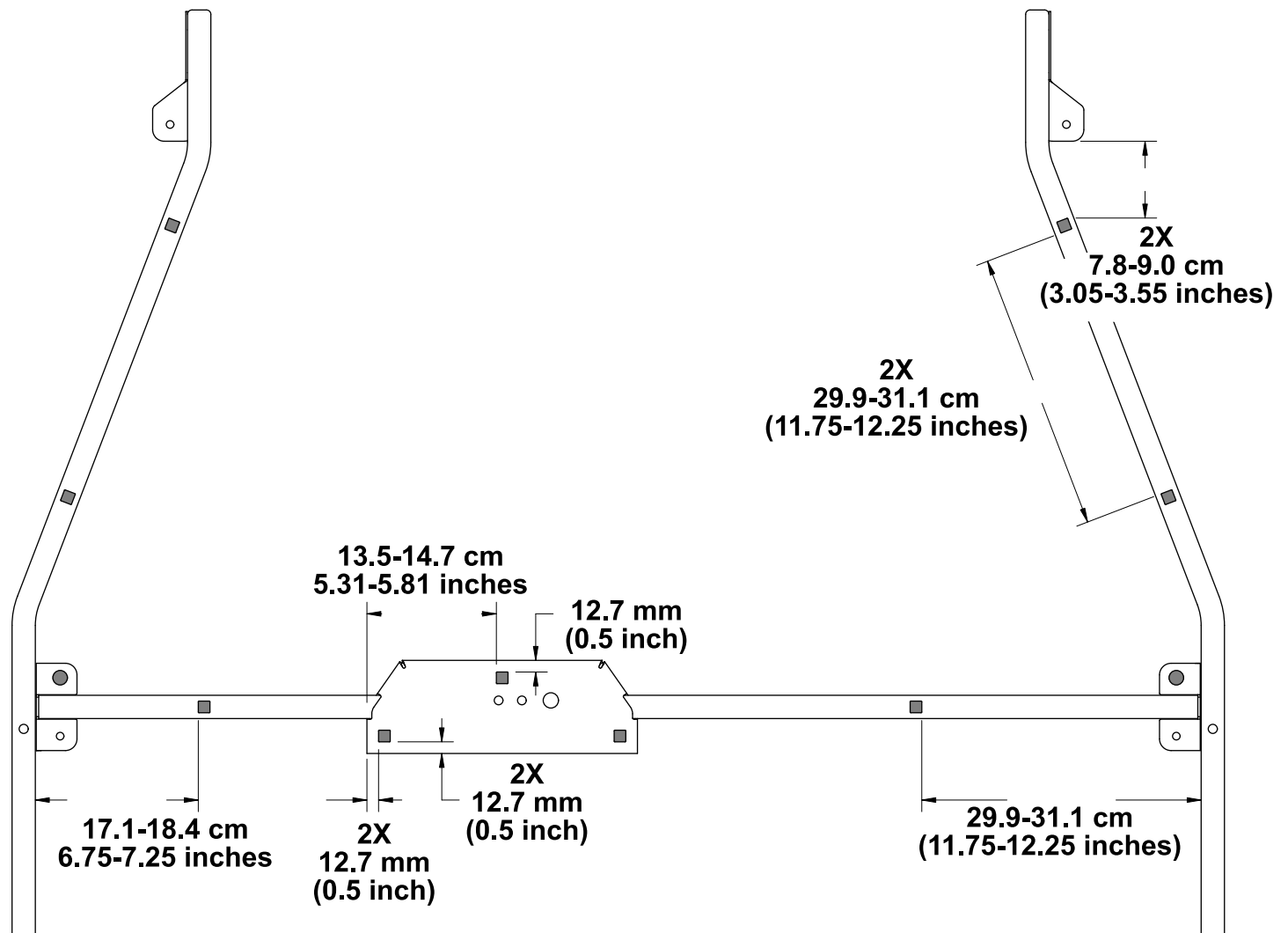


Figure 6

g255230

# 7

## Installing the Wiper Motor Assembly

Parts needed for this procedure:

1	Wiper motor assembly
---	----------------------

### Procedure

1. Disassemble the fasteners from the wiper motor assembly as shown in [Figure 7](#).

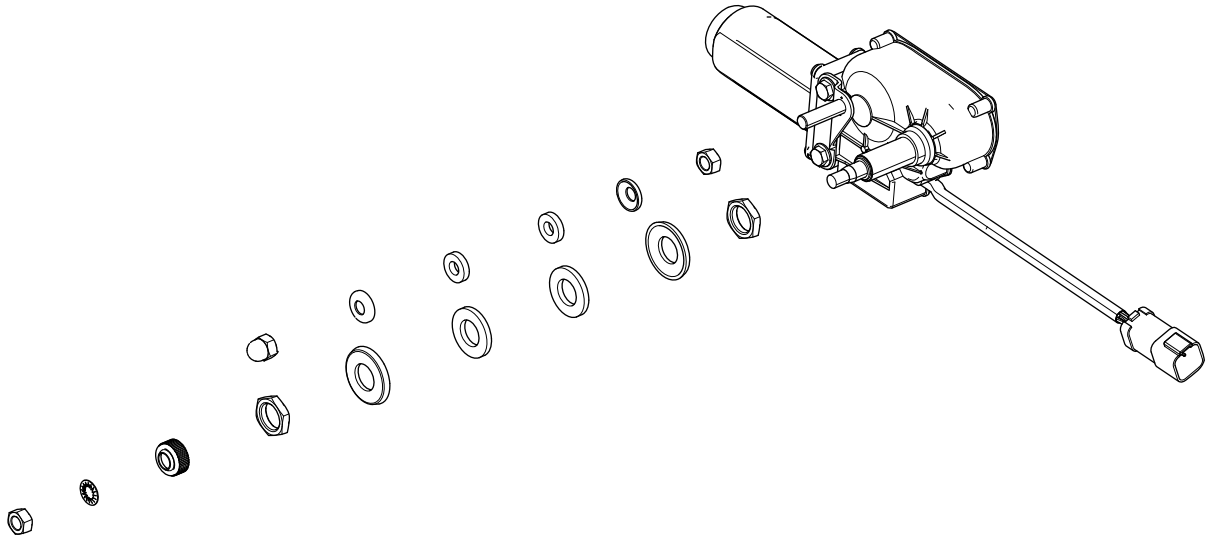
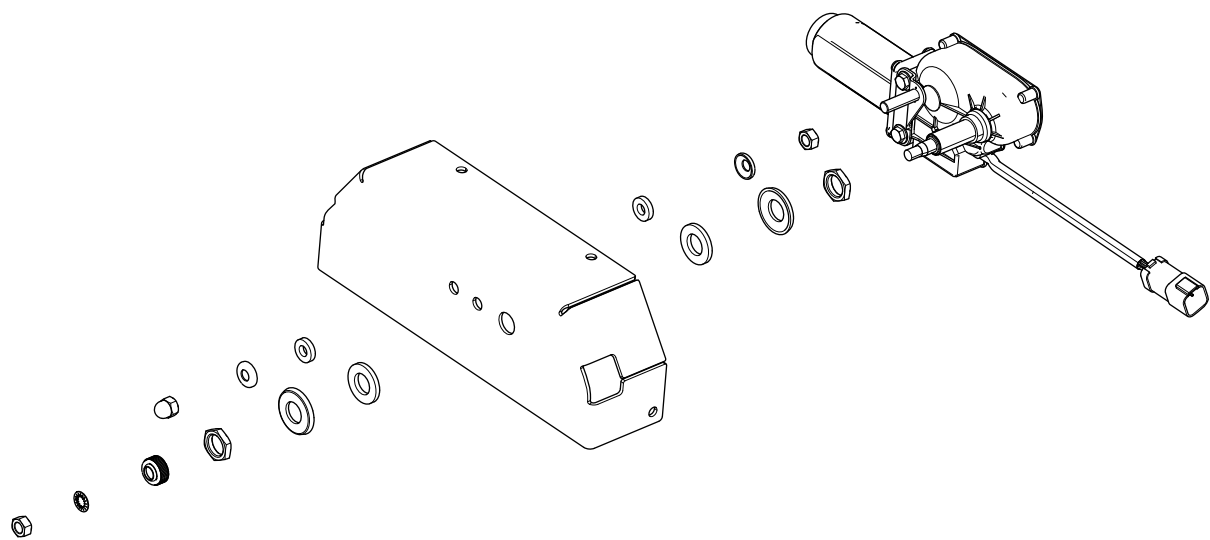


Figure 7

g255217

2. Secure the wiper motor assembly to the motor mount bracket using the previously removed hardware as shown in [Figure 8](#).



g255218

Figure 8

3. Torque the acorn nut to 23 to 28 N·m (17 to 21 ft-lb) and torque the wiper stud nut to 23 to 28 N·m (17 to 21 ft-lb).

# 8

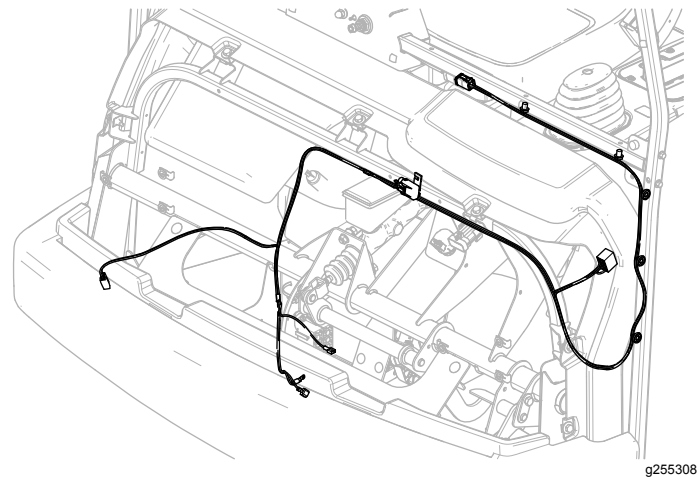
## Routing the Wire Harness

Parts needed for this procedure:

1	Wire harness
1	Rocker switch

### Procedure

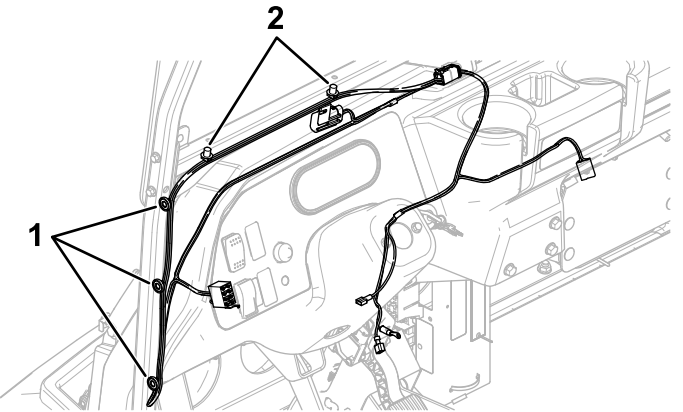
1. Route the wire harness as shown in [Figure 9](#).



g255308

Figure 9

2. Secure the wire harness to the left canopy support tube and windshield support assembly using the magnetic tie wraps and push-mount fasteners on the wire harness ([Figure 10](#)).



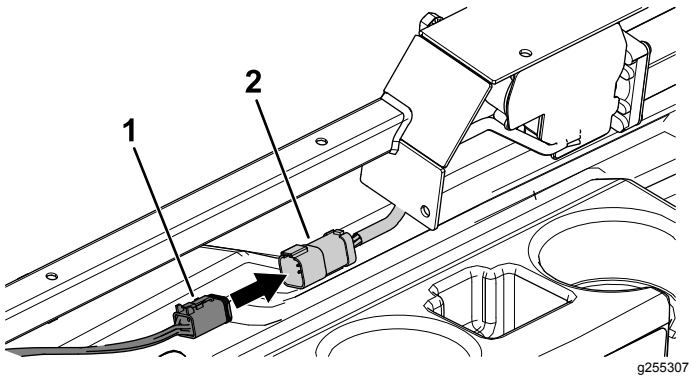
g255309

Figure 10

1. Magnetic tie wraps      2. Push-mount fasteners



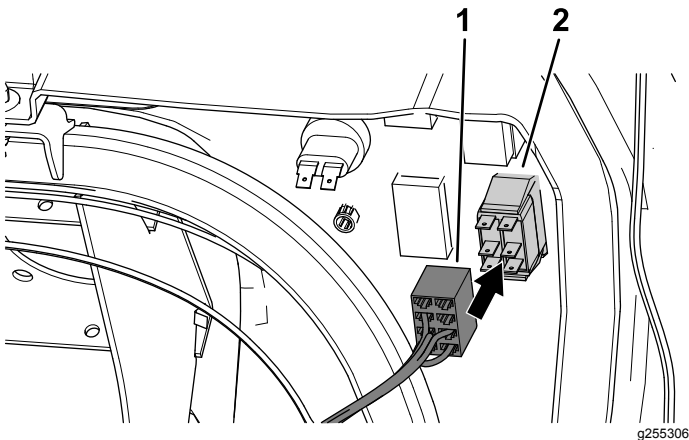
3. Connect the wire harness to the connector on the wiper motor ([Figure 11](#)).



**Figure 11**

1. Wire harness connector
2. Wiper motor connector

4. Remove the plug from the dash and install the rocker switch in the opening.
5. Connect the 8-socket connector on the wire harness to the rocker switch in the dash ([Figure 12](#)).



**Figure 12**

1. Wire harness connector
2. Rocker switch

# 9

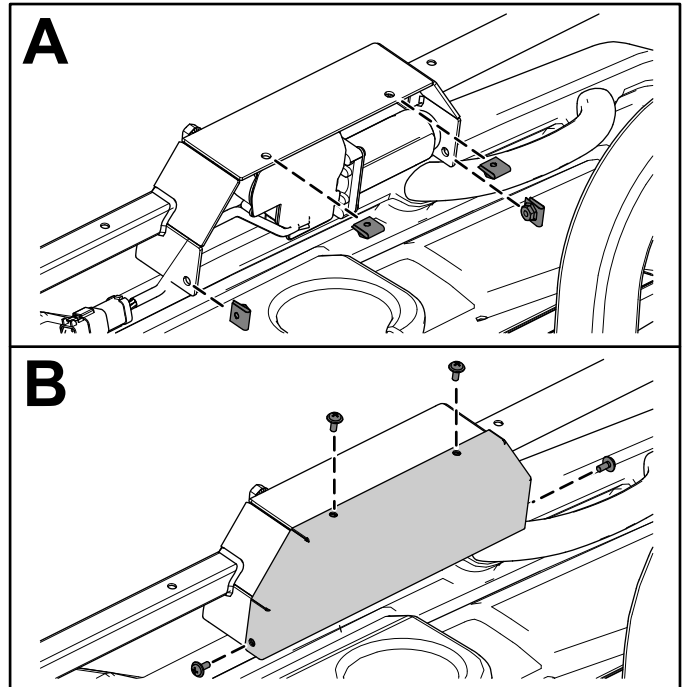
## Installing the Wiper Motor Cover

### Parts needed for this procedure:

1	Wiper motor cover
4	Speed nut
4	Phillips-head screw (#10 x 1/2 inch)

### Procedure

Secure the wiper motor cover to the motor mount bracket using the 4 speed nuts and 4 Phillips-head screws (#10 x 1/2 inch) as shown in [Figure 13](#).



**Figure 13**

# 10

## Installing the Windshield Trim

Parts needed for this procedure:

1	Windshield trim
---	-----------------

### Procedure

Starting with the seam of the trim at the top, center of the windshield, use a rubber mallet to install the trim around the windshield ([Figure 14](#)).

**Note:** After installing the trim, you may need to trim the length of the edge of the trim.

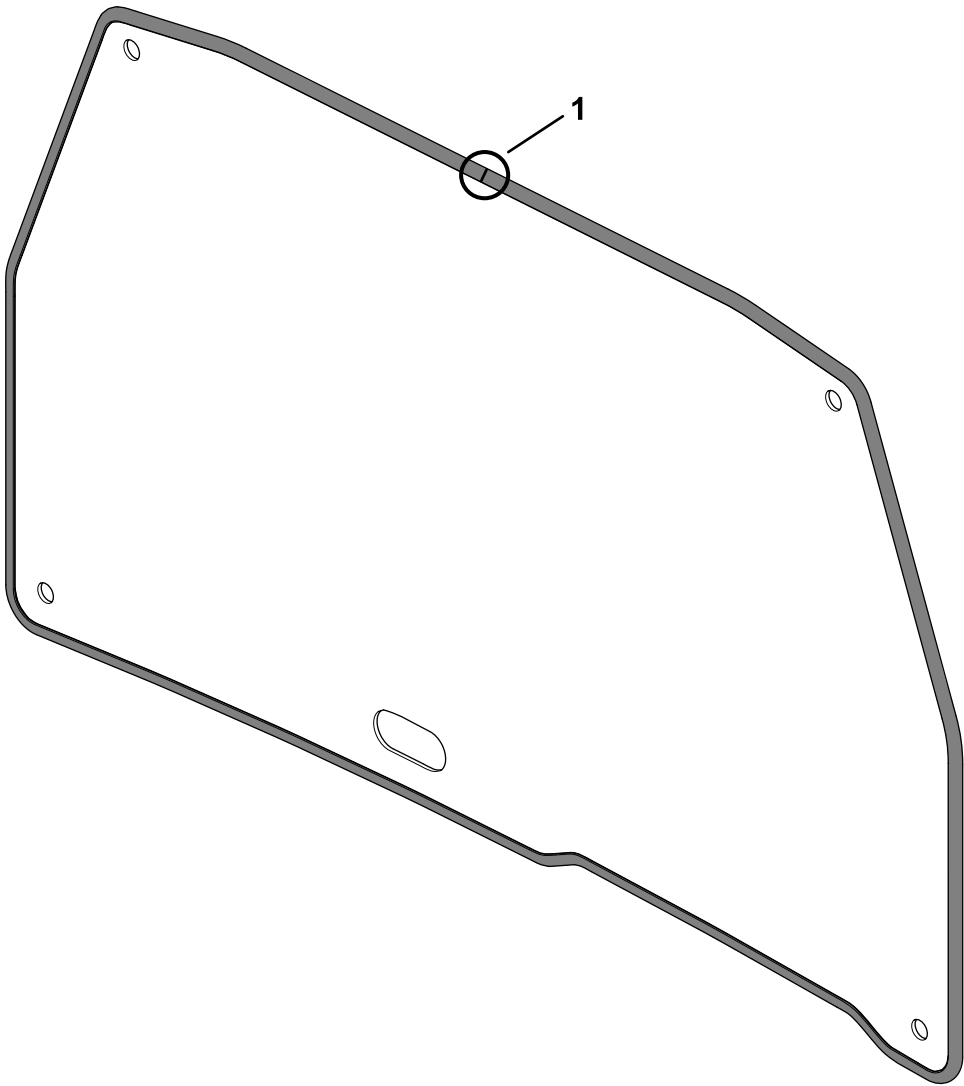


Figure 14

g288303

1. Start the seam of the trim here.

# 11

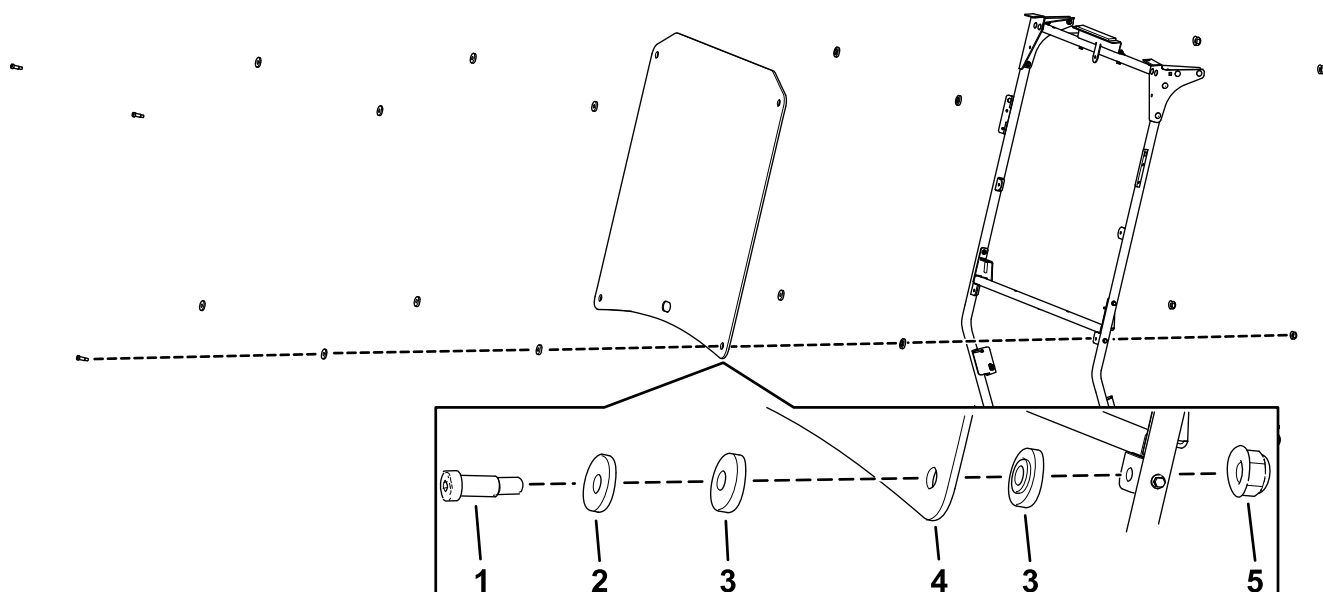
## Installing the Windshield

### Parts needed for this procedure:

1	Windshield
4	Shoulder bolt (5/16 x 1-1/4 inches)
8	Flange bushing
4	Flange nut (5/16 inch)
4	Backup washer

### Procedure

Install the windshield to the windshield supports using 4 shoulder bolts (5/16 x 1-1/4 inches), 4 backup washers, 8 flange bushings, 4 flange nuts (5/16 inch) as shown in [Figure 15](#).



**Figure 15**

g255312

- |                                        |                           |
|----------------------------------------|---------------------------|
| 1. Shoulder bolt (5/16 x 1-1/4 inches) | 4. Windshield             |
| 2. Backup washer                       | 5. Flange nut (5/16 inch) |
| 3. Flange bushing                      |                           |

# 12

## Testing the Wiper Motor

No Parts Required

### Procedure

Run the wiper motor through a complete cycle to ensure that the wiper shaft positions correctly.

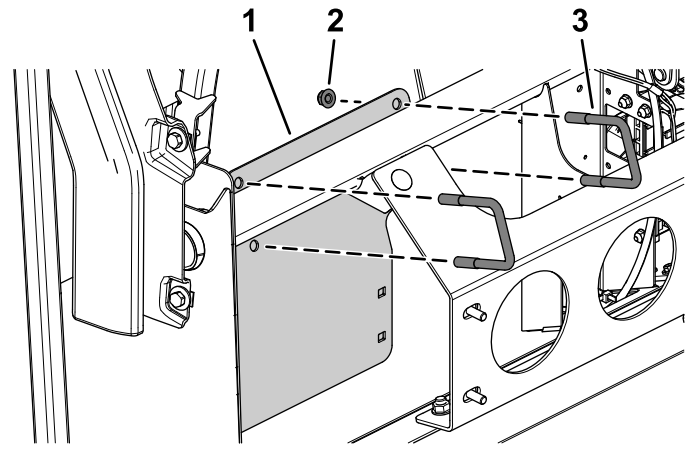


Figure 16

1. Tank mounting bracket
2. Flange nut (5/16 inch)
3. U-bolt

# 13

## Installing the Washer Tank

Parts needed for this procedure:

1	Washer tank
1	Tank mounting bracket
2	U-bolt
4	Carriage bolt (5/16 x 3/4 inch)
8	Flange nut (5/16 inch)
1	Wiper hose
1	Barbed hose fitting
3	Cable tie

### Procedure

1. Secure the tank mounting bracket to the machine support tube using the 2 U-bolts and 4 flange nuts (5/16 inch) as shown in [Figure 16](#).

2. Secure the washer tank to the tank mounting bracket using 4 carriage bolts (5/16 x 3/4 inch) and 4 flange nuts (5/16 inch) as shown in [Figure 17](#).

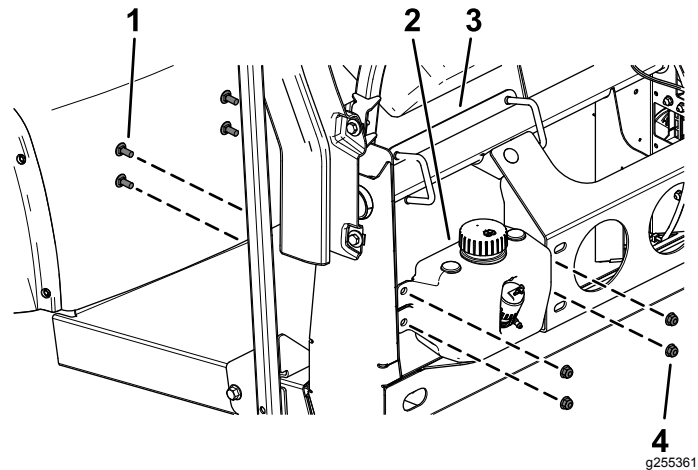
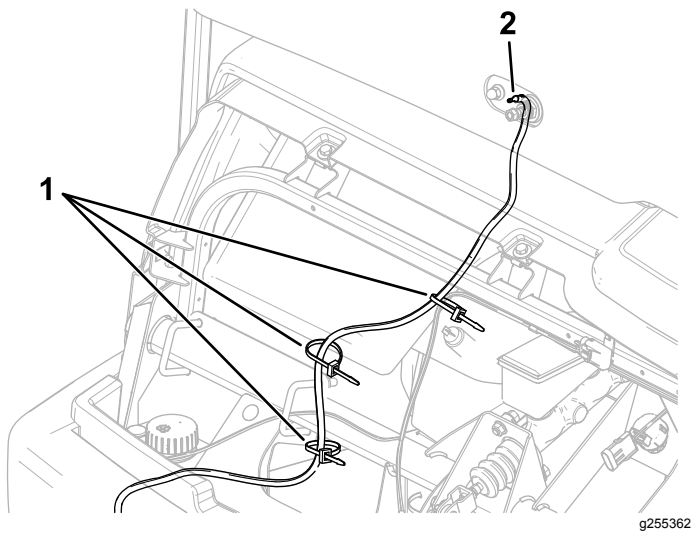


Figure 17

1. Carriage bolt (5/16 x 3/4 inch)
2. Washer tank
3. Tank mounting bracket
4. Flange nut (5/16 inch)

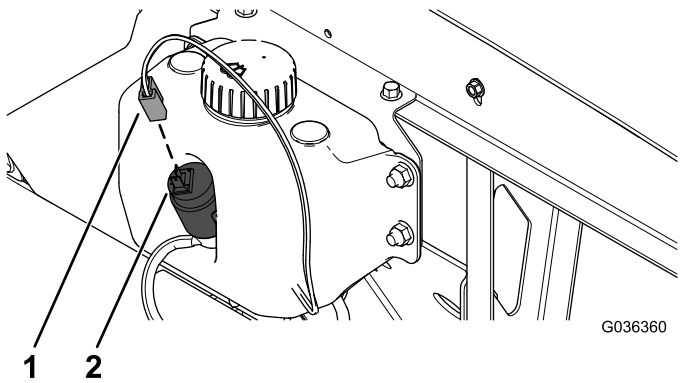
3. Connect the wiper hose to the washer tank ([Figure 18](#)).
4. Route the wiper hose from the washer tank to the wiper motor and secure it using the 3 cable ties ([Figure 18](#)).
5. Install the barbed hose fitting in the opening of the wiper motor and connect the other end of the wiper hose ([Figure 18](#)).



**Figure 18**

1. Cable ties                      2. Barbed hose fitting

6. Insert the wire-harness connector onto the tank connector until the connector fully seats ([Figure 19](#)).



**Figure 19**

1. 2-socket connector—wire harness    2. 2-blade connector—washer pump

# 14

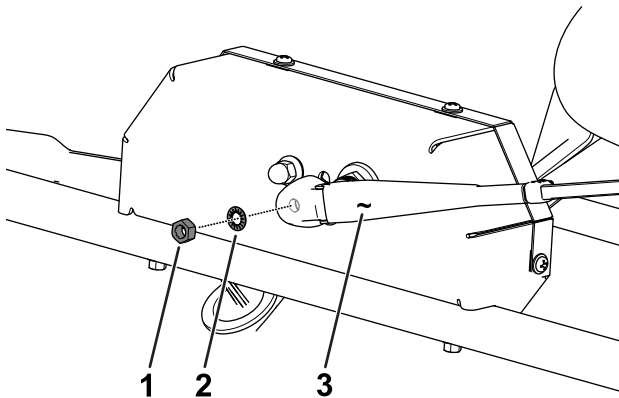
## Installing the Wiper

Parts needed for this procedure:

1	Wiper arm
1	Wiper blade

### Procedure

1. Run the wiper motor for at least 1 cycle and allow it to return to its normal position.
2. Secure the wiper blade to the wiper arm.
3. Use the lock washer and wiper stud nut to install the arm to the motor ([Figure 20](#)).

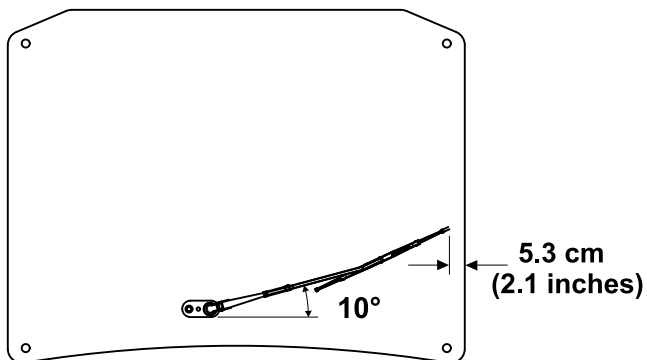


g218248

**Figure 20**

1. Wiper stud nut
2. Lock washer
3. Wiper arm

4. Position the arm using the measurements shown in [Figure 21](#).



g255414

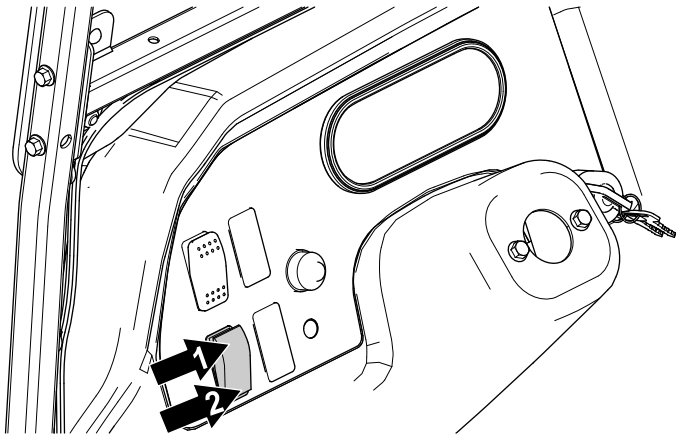
**Figure 21**

5. Torque the wiper stud nut to 23 to 29 N·m (17 to 21 ft-lb).

# Operation

## Using the Wipers

Press the rocker switch to turn the wipers to the ON or OFF position ([Figure 22](#)).



g255425

**Figure 22**

1. ON position

2. OFF position



**Count on it.**