



Over-the-Tire Tracks	
Model 22457 and 22431	Installation Instructions

IMPORTANT: Before using this product, read the safety section in your traction unit operator’s manual, and follow all precautions listed there.

Loose Parts

DESCRIPTION	QTY.	USE
Pivot pin	2	Install on loader arm hydraulic cylinders
Hex set-screw	2	
Wheel spacers	4	Install on wheels
Lug nuts (20 provided with the wheel spacers and 20 on the traction unit)	40	
Over-the-tire track assembly	2	Install on traction unit
Bolt	4	
Locknut	4	

Installation

IMPORTANT: The tracks must only be installed over the Sitework Systems or turf tread tires. Installation over any other type of tire may result in damage to the machine.

Installing Pivot Pins

Model 22457 Only

- 1. Lower the loader arms as low as possible.
- 2. Turn the traction unit off and remove the key.
- 3. Remove the existing pivot pin from the bottom of a loader arm hydraulic cylinder (Fig. 1). Retain the bolt for later use.

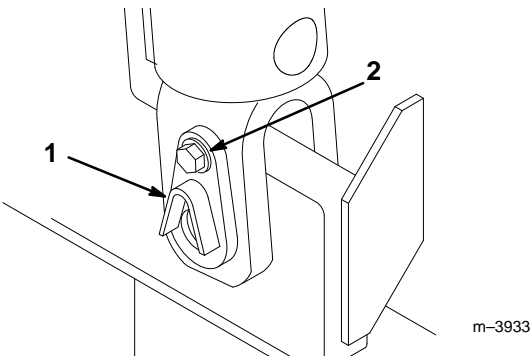


Figure 1

- 1. Pivot pin
 - 2. Bolt
-
- 4. Remove the grease fitting from the center of the pivot pin and discard the pin.

5. Install the new pivot pin using the bolt removed in step 3 (Fig. 2).

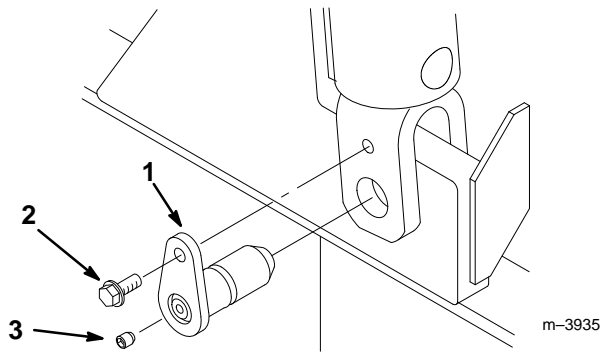


Figure 2

- | | |
|--------------|------------------|
| 1. Pivot pin | 3. Hex set-screw |
| 2. Bolt | |

6. Thread the grease fitting removed from the old pivot pin into the opening in the face of the new pivot pin.
7. Connect a grease gun to the fitting. Pump grease into the fitting until grease begins to ooze out of the bearing.
8. Wipe up any excess grease.
9. Remove the grease fitting and replace it with the hex set-screw (Fig. 2).
10. Repeat steps 3 through 9 for the other loader arm hydraulic cylinder.
11. Store the grease fittings for future use (refer to Greasing Pivot Pins, page 3).

Installing Wheel Spacers

1. Put the traction unit up on blocks and remove the wheels.
2. Slide the wheel spacers onto the studs on the wheel hub and secure them with lug nuts (Fig. 3). Torque the lug nuts to 55 in-lbs (75 N·cm).
3. Install the wheels on the studs on the wheel spacers and secure them with lug nuts (Fig. 3). Torque the lug nuts to 55 ft-lbs (75 N·m).

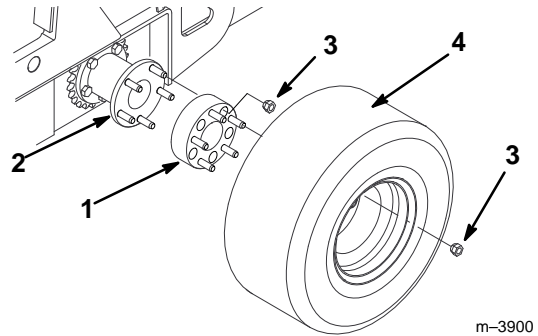


Figure 3

- | | |
|-----------------|------------|
| 1. Wheel spacer | 3. Lug nut |
| 2. Wheel hub | 4. Wheel |

4. Return the traction unit to the ground.
5. After the first 8 hours of operation, torque the lug nuts again to 55 ft-lbs (75 N·m).

Installing the Tracks

! **CAUTION** !

POTENTIAL HAZARD

- Some areas of the tracks have sharp edges and moving parts that can pinch.

WHAT CAN HAPPEN

- You could be cut or pinched while handling the tracks.

HOW TO AVOID THE HAZARD

- Wear leather gloves while handling the tracks.

1. Lay one track on a level surface.
2. Drive the traction unit onto the track until both wheels on one side are centered in the track.
3. Pull the front and rear of the track up and over the tires and secure them with a ratchet and straps (Fig. 4).
4. Connect the track by installing (2) bolts and (2) locknuts through the connector links on both sides of the track (Fig. 4).

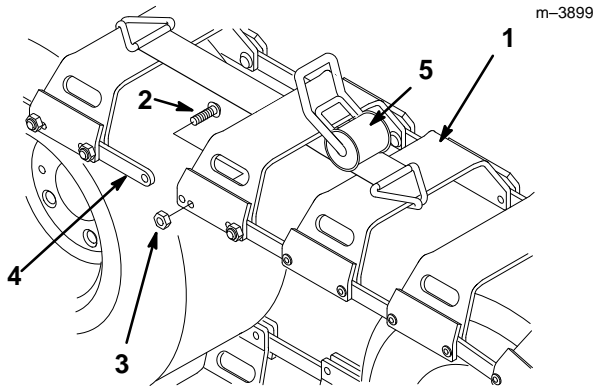


Figure 4

- | | |
|------------|-----------------------|
| 1. Track | 4. Connector link |
| 2. Bolt | 5. Ratchet and straps |
| 3. Locknut | |

5. Remove the ratchet and straps.
6. Repeat steps 1 through 4 for the other side of the traction unit.
7. Drive the traction unit for a few minutes to loosen the tracks.
8. Lay a long, straight bar across the top of each track. There should be 1 to 3 in. (25 to 76 cm) of slack in the top span of the track below the bar (Fig. 5).

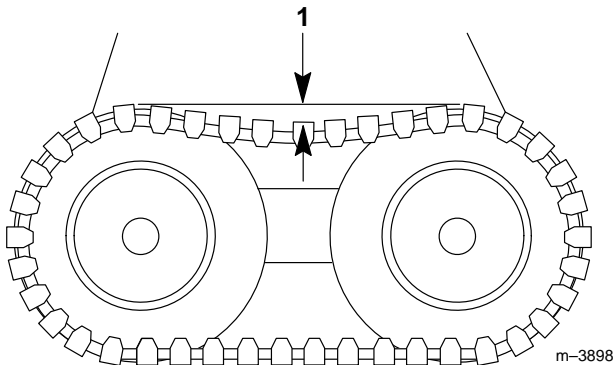


Figure 5

1. 1 to 3 in. (25 to 76 cm)

9. If there is too much or too little slack in the track, adjust the track tension; refer to Adjusting Track Tension, page 4.

Removing the Tracks

1. Stop the traction unit so that one set of the bolted connector links on a track is in the middle of the top span.

2. Remove the bolts and nuts from the connector links and lay the track flat.
3. Drive slowly off of the track.
4. Place the bolts and nuts in the holes in the connector for storage.
5. Repeat steps 1 through 4 for the other track.

Operating Tips



WARNING



POTENTIAL HAZARD

- The moving tracks can pinch hands or feet.

WHAT CAN HAPPEN

- Injury or amputation could result.

HOW TO AVOID THE HAZARD

- Keep clear of the tracks during operation.

Avoid operating on asphalt or concrete surfaces as damage may occur to the surface, as well as excessive wear on the tracks.

Maintenance

Greasing Pivot Pins

Model 22457 Only

Grease the pivot pins on the hydraulic cylinders as instructed in the traction unit Operator's Manual. To grease the pivot pins installed with the tracks, complete the following procedure:

1. Lower the loader arms as far as possible.
2. Turn the traction unit off and remove the key.
3. Clean the face of each pivot pin with a rag.
4. Remove the hex set-screws from the center of the pivot pins.
5. Thread the grease fittings removed from the old pivot pins during installation into the openings vacated by the set-screws.
6. Connect a grease gun to each fitting. Pump grease into the fittings until it begins to ooze out of the bearings.
7. Wipe up any excess grease.
8. Remove the grease fittings and replace them with the hex set-screws.

Adjusting Track Tension

Check the tension of the tracks every 25 operating hours by laying a long, straight bar across the top of each track. There should be 1 to 3 in. (25 to 76 cm) of slack in the top span of the track below the bar (Fig. 5). If the track needs adjustment, complete the following procedure:

Note: When you adjust the traction drive chain (if you traction unit has traction drive chains), the track may also need to be adjusted.

1. Park the traction unit so that one set of the bolted connector links is in the middle of the top span.
2. Remove the bolts from the connector and reconnect them through the inner holes of the track section to tighten the track (Fig. 6).

Note: To loosen the track you can move a connector installed in an inner hole to the outer hole.

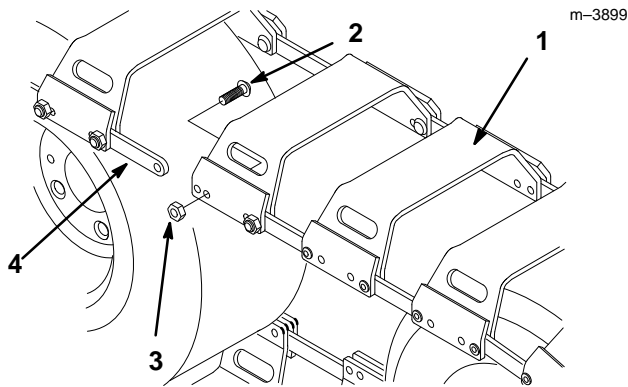


Figure 6

- | | |
|----------|-------------------|
| 1. Track | 3. Locknut |
| 2. Bolt | 4. Connector link |

3. Check the track tension and repeat steps 1 and 2 for one of the other adjustable track sections if additional tensioning is required.

Storage

1. Before long term storage, wash the tracks with mild detergent and water to remove dirt and grime.
2. Check the condition of the tracks and tighten all bolts and nuts. Repair or replace any part that is damaged or worn.
3. Store the tracks in a clean, dry garage or storage area. Cover them to protect them and keep them clean.