



42" Single Stage Snowthrower

Model No. 79365—9900001 and Up

Parts Catalog

Ordering Replacement Parts

To order replacement parts, please supply: the part number, the quantity, and the description of each part desired.

Understanding Reference Numbers

Each identified part in an illustration has a reference number. The reference number for a part also appears in the parts list, along with other information about the part.

This catalog uses two special reference number formats, one to indicate parts in a service assembly and another to indicate the quantity of a given part in an illustration.

Service Assembly Reference Numbers

Parts in service assemblies have reference numbers in the form **a:b**. The **a** represents the reference number of the entire service assembly and the **b** represents a sequential number unique to each part within the service assembly.

For example, a wheel assembly might be identified by reference number **6**, the tire by **6:1**, the valve by **6:2**, and the wheel by **6:3**. When you order the assembly identified by reference number **6**, you receive all parts identified by reference numbers **6:1**, **6:2**, and **6:3**. However, you may also order any part individually.

Reference numbers of this type appear in illustrations and in part lists.

Reference Numbers Indicating Quantity

In an illustration, if a reference number indicates more than one part, the reference number has the form **nX y**. The **n** represents the quantity of the part, the **X** is the multiplication symbol, and the **y** represents the reference number.

For example, in an illustration, the reference number **2X 37** means that two of the parts identified by reference number **37** are indicated.

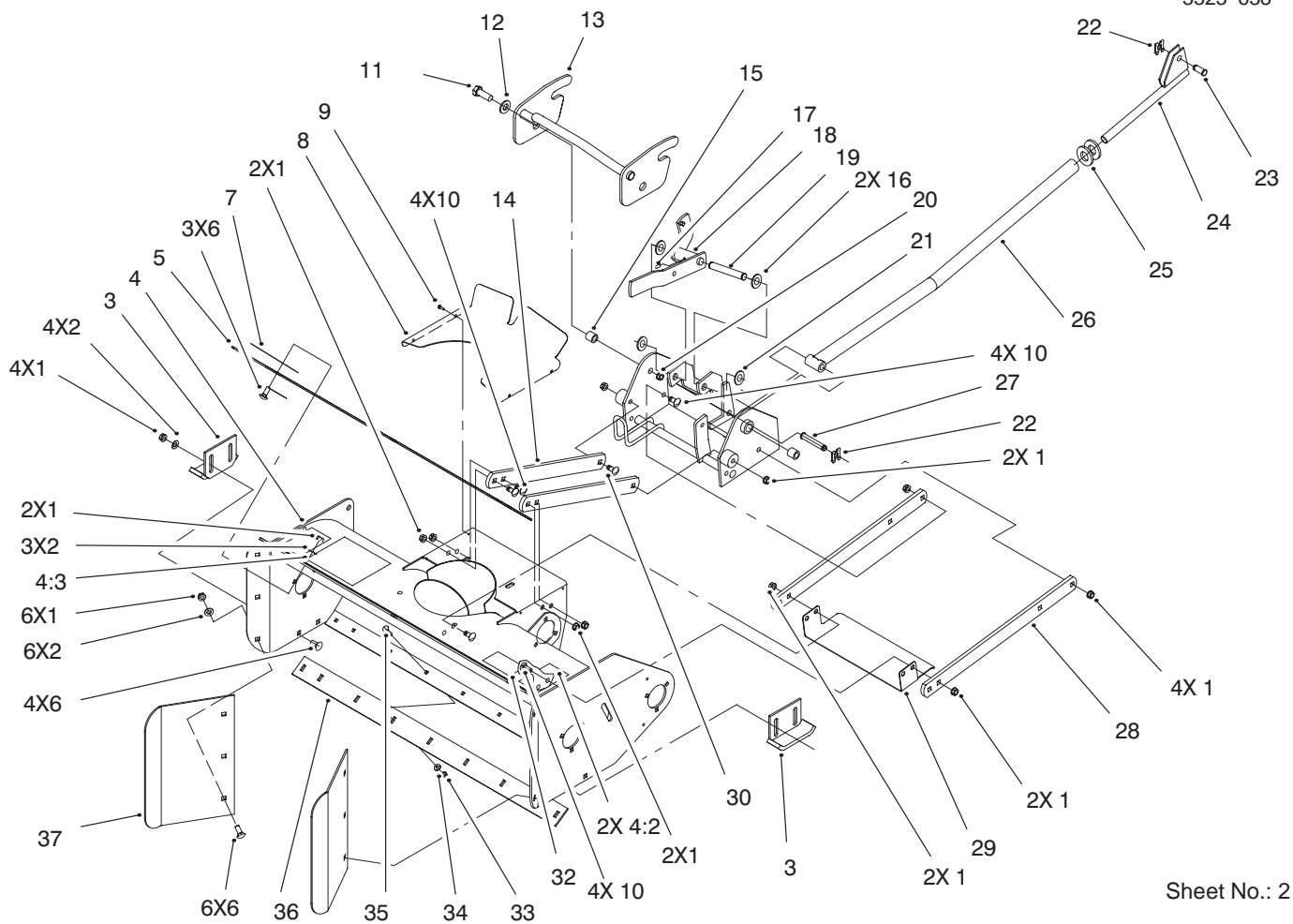
Contents

Description	Page	Description	Page
Mounting and Attachment Assembly	3	Auger and Drive Assembly	5
Chute and Rotation Assembly	4	Mounting Assembly	6

Part Description Abbreviations

Part descriptions in this catalog may include the following abbreviations.

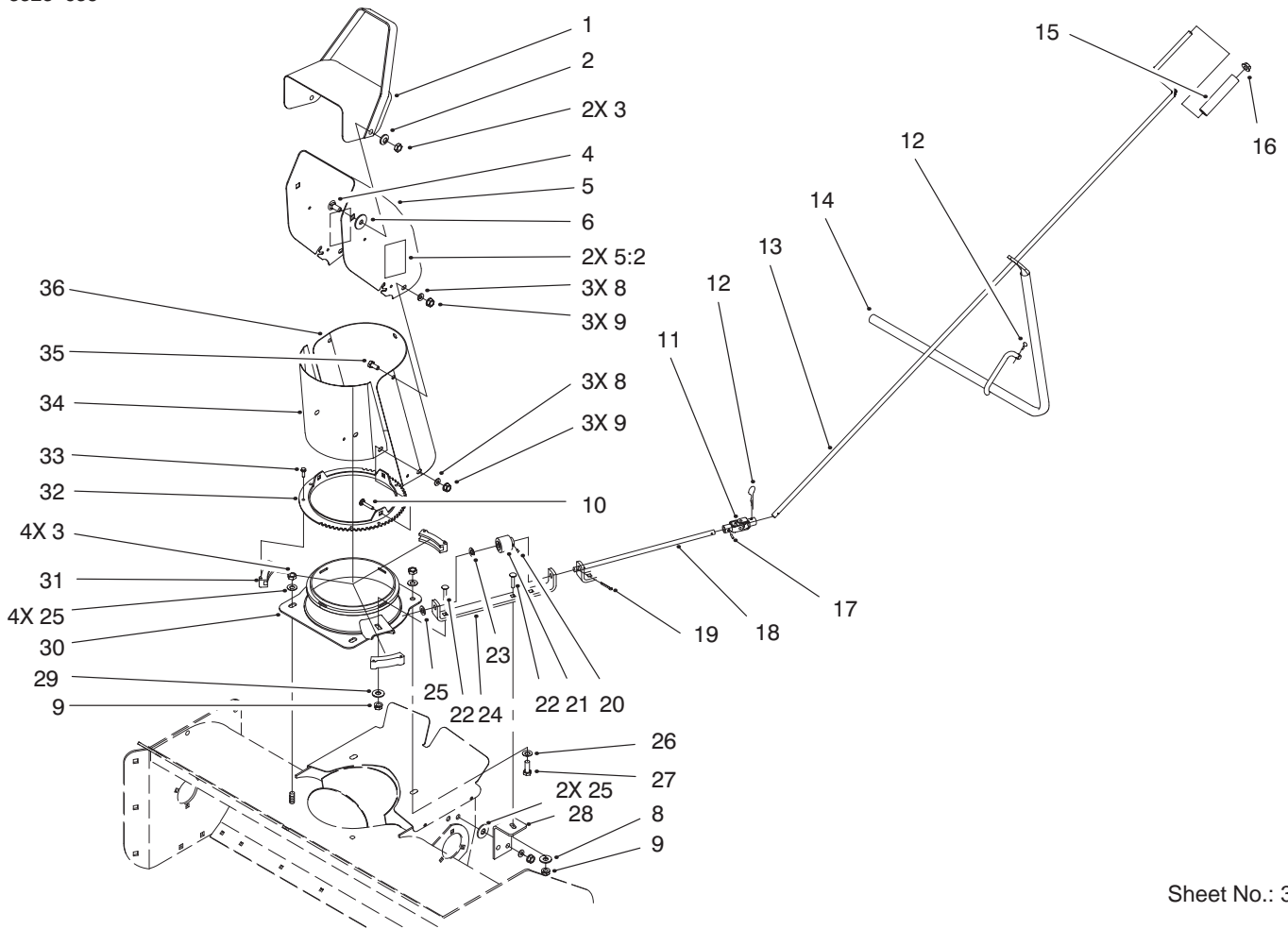
Abbreviation	Meaning	Abbreviation	Meaning
AR	as required	INC	incorporated
ASM	assembly	LH	left hand
CARR	carriage	NI	nylon insert
DEG	degrees	PPH	Phillips pan head
FH	flat head	PTH	Phillips truss head
GA	gauge	PTO	power take off
HF	hex flange	RH	right hand
HH	hex head	SFH	slotted fillister head
HHF	hex head flange	SHH	slotted hex head
HLH	hex lag head	SQH	square head
HJ	hex jam	SHWH	slotted hex washer head
HOC	height-of-cut	SPH	slotted pan head
HS	hex socket	SRH	slotted round head
HSBH	hex socket button head	STD	standard
HSFH	hex socket flat head	TAP	self tapping
HSH	hex socket head	TTH	Torx truss head
HWH	hex washer head	WH	wing head
HWHTF	hex washer head thread forming		



Sheet No.: 2

Mounting and Attachment Assembly

Ref. No.	Part No.	Qty.	Description	Ref. No.	Part No.	Qty.	Description
1	3296-39	27	Nut-Lock Ni	24	94-7666-01	1	Rod
2	3256-24	13	Washer-Flat	25	3256-28	2	Washer-Flat
3	93-1620-01	2	Skid	26	94-7663-01	1	Tube
4	94-7859	1	Auger Housing Assembly	27	98-1640	1	Pin-Clevis
4:2	63-2380	2	Decal-Danger	28	95-4299-01	2	Bar-Lift
4:3	92-8652	1	Decal-Warning	29	95-4149-01	1	Shield-Lower
5	93-1616-01	1	Plate-Extension	30	3231-7	2	Screw-CARR
6	3231-2	13	Screw-CARR	32	44-3216	1	Decal-Model/Serial No.
7	92-8748	1	Decal-Attachment	33	3296-42	9	Nut-Lock Ni
8	95-4148-01	1	Shield-Snow	34	3256-22	9	Washer-Flat
9	32144-1	4	Screw-Taptite	35	3229-25	9	Screw-CARR
10	3231-3	12	Screw-CARR	36	79-6170-01	1	Scraper-Reversible
11	325-8	3	Screw-HH	37	93-1617-01	2	Plate-Extension, RH
12	3256-26	4	Washer-Flat				
13	94-7706-01	1	Mounting				
14	94-7711-01	2	Bar-Lift				
15	94-7813	2	Bushing-Pivot				
16	3256-27	2	Washer-Flat				
17	302-5	1	Fitting-Lube				
18	94-7709-01	1	Pivot-Idler				
19	94-7870-01	1	Shaft-Pivot, Idler				
20	3296-23	2	Nut-Lock Ni				
21	32151-62	2	Ring-Retaining H D				
22	95-4064	2	Clip-Pin				
23	98-1639	1	Pin-Clevis				

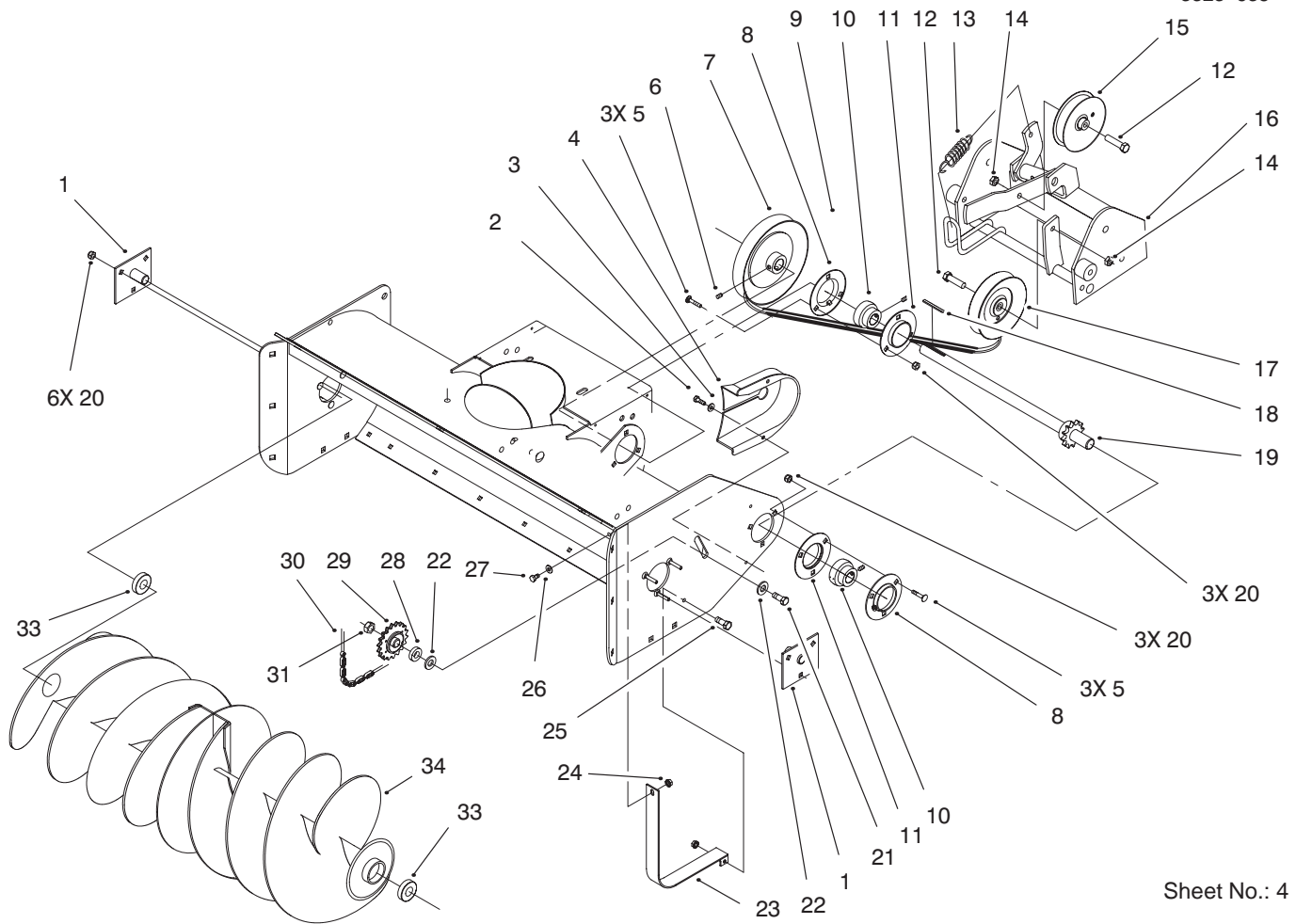


Sheet No.: 3

Chute and Rotation Assembly

Ref. No.	Part No.	Qty.	Description
1	11-7120-01	1	Deflector
2	3290-340	2	Washer-Belleville
3	3296-39	6	Nut-Lock Ni
4	3231-2	2	Screw-CARR
5	94-1832	1	Chute
5:2	94-8078	1	Decal-Discharge Danger
6	20-4320	2	Washer-Rubber
8	3256-23	7	Washer-Flat
9	3296-29	8	Nut-Lock Ni
10	3230-1	3	Screw-CARR
11	94-2686	1	Universal Joint
12	9335054	2	Pin-Hair Cotter
13	98-3090	1	Rod
14	94-7729-01	1	Support-Crank
15	40-8230	1	Grip-Chute Control
16	99-6885	1	Nut-Push
17	32121-47	1	Pin-Spring
18	92-7046	1	Rod
19	3272-10	1	Pin-Cotter
20	32121-50	1	Pin-Spring
21	8-8600	1	Gear-Worm, Chute
22	3230-2	2	Screw-CARR
23	3290-212	1	Washer-Spring
24	98-3089-01	1	Bracket-Gear
25	3256-24	7	Washer-Flat

Ref. No.	Part No.	Qty.	Description
26	9202414	2	Washer-Spacer
27	323-6	2	Screw-HH
28	98-3092-01	1	Support-Crank, Lower
29	3290-238	1	Washer-Lock, Pyramidal
30	95-4033-01	1	Adapter
31	25-5450	3	Retainer-Chute
32	25-5290-01	1	Ring-Chute, Swivel
33	27-0220	6	Screw-Special
34	94-2997-01	1	Shield-Deflector
35	322-2	3	Screw-HH
36	26-1110-01	1	Extender-Chute, Upper



Sheet No.: 4

Auger and Drive Assembly

Ref. No.	Part No.	Qty.	Description
1	93-1618-01	2	Support
2	9266714	2	Screw-HWH
3	3256-22	2	Washer-Flat
4	98-1631	1	Guard-Chain
5	3230-1	6	Screw-CARR
6	3242-2	2	Screw-Sq. Hd. Set
7	94-7662	1	Pulley
8	110568	2	Flange
9	95-3918	1	V-Belt
10	110569	2	Bearing & Collar
11	110567	2	Flange Relube-Zerk
12	323-10	2	Screw-HH
13	94-2460	1	Spring-Extension
14	3296-39	2	Nut-Lock Ni
15	94-6236	1	Pulley-Idler
16	95-4297-01	1	Frame-Pulley
17	94-2447	1	Pulley-Idler
18	1005	1	Straight Key
19	94-7869-01	1	Shaft-Drive
20	3296-29	12	Nut-Lock Ni
21	325-8	1	Screw-HH
22	3256-26	2	Washer-Flat
23	93-1619-01	1	Guard-Inner
24	32149-2	2	Nut-Keps
25	1391	1	Screw
26	3256-2	1	Washer-Flat

Ref. No.	Part No.	Qty.	Description
27	321-3	1	Screw-HH
28	6417	1	Spacer
29	93-1614-01	1	Sprocket-Idler
30	98-5083	1	Chain
31	3296-23	1	Nut-Lock Ni
33	101480	2	Ball Bearing
34	93-1615-01	1	Auger Assembly

