



Z-Master
Compact Series Z149
with 52" Side Discharge Mower
Model No. 74173—200000001 and Up

Parts Catalog

Ordering Replacement Parts

To order replacement parts, please supply: the part number, the quantity, and the description of each part desired.

Understanding Reference Numbers

Each identified part in an illustration has a reference number. The reference number for a part also appears in the parts list, along with other information about the part.

This catalog uses two special reference number formats, one to indicate parts in a service assembly and another to indicate the quantity of a given part in an illustration.

Service Assembly Reference Numbers

Parts in service assemblies have reference numbers in the form **a:b**. The **a** represents the reference number of the entire service assembly and the **b** represents a sequential number unique to each part within the service assembly.

For example, a wheel assembly might be identified by reference number **6**, the tire by **6:1**, the valve by **6:2**, and the wheel by **6:3**. When you order the assembly identified by reference number **6**, you receive all parts identified by reference numbers **6:1**, **6:2**, and **6:3**. However, you may also order any part individually.

Reference numbers of this type appear in illustrations and in part lists.

Reference Numbers Indicating Quantity

In an illustration, if a reference number indicates more than one part, the reference number has the form **nX y**. The **n** represents the quantity of the part, the **X** is the multiplication symbol, and the **y** represents the reference number.

For example, in an illustration, the reference number **2X 37** means that two of the parts identified by reference number **37** are indicated.

Contents

Description	Page	Description	Page
Front Frame Assembly	3	Idler, Pulley/Lift Strut, Chains Assembly	16
Height of Cut Handle and Plates	4	Piston/Crankshaft Assembly	17
Main Frame	5	Cylinder/Crankcase Assembly	18
Fuel System Assembly	7	Valve/Camshaft Assembly	20
Parking Brake System Assembly	8	Cooling–Equipment Assembly	22
Motion Control System Assembly	9	Electric–Equipment Assembly	24
Hydraulic System Assembly	10	Control–Equipment Assembly	26
Pump, Idler and Belt Assembly	11	Carburetor Assembly	28
Engine and Clutch Assembly	12	Lubrication–Equipment Assembly	30
Electrical System Assembly	13	Air–Filter/Muffler Assembly	31
52" Deck Assembly	14	Fuel–Tank/Fuel–Valve	32
52" Deck Spindle Assembly	15	Starter/Decals	33

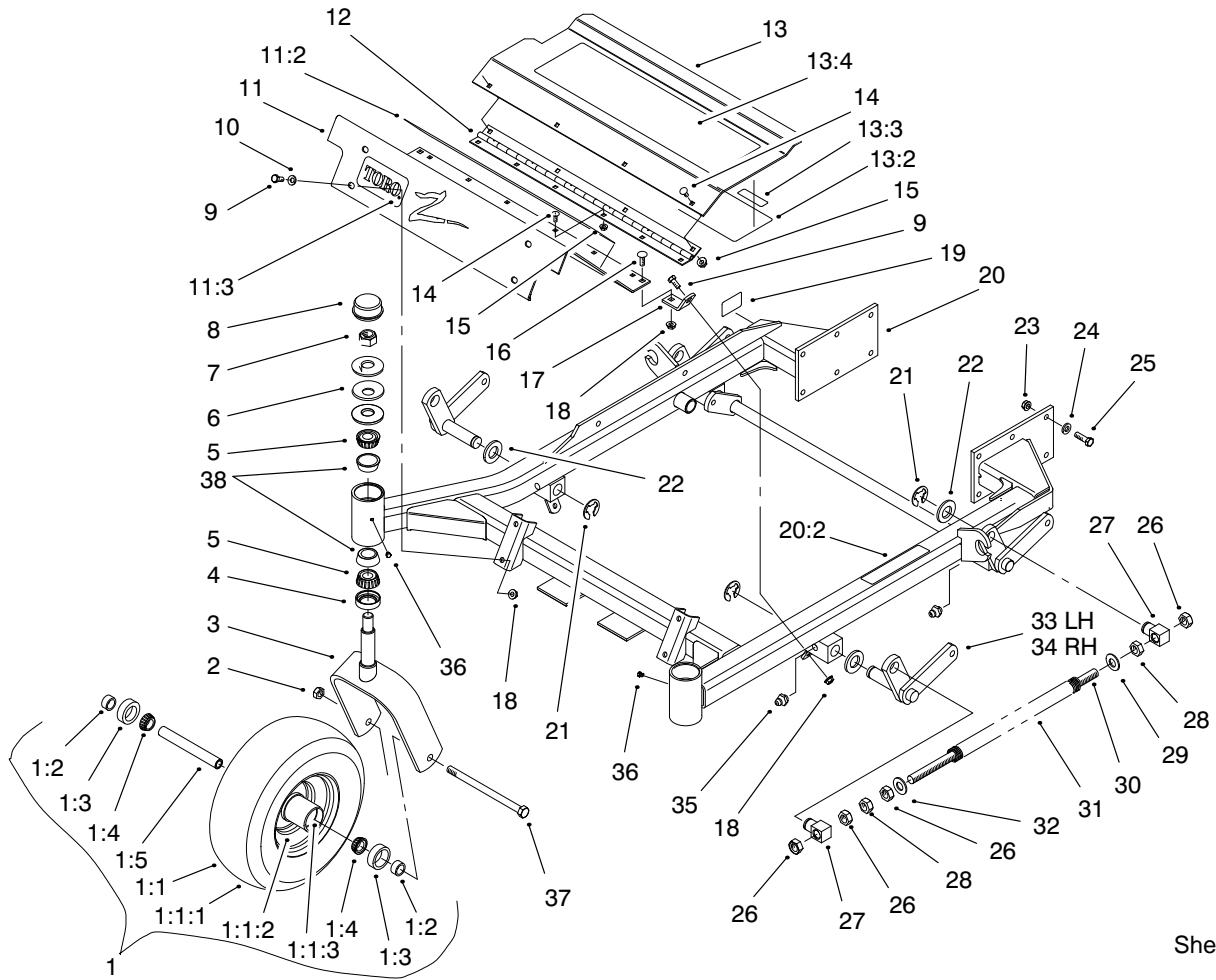
Accessories

Description	Model / Part No.	Description	Model / Part No.
Recycler Kit	59225	Striping Kit	30121
Bahaia Mulch Kit	59227	High Suspension Seat	74210
High Sail Blades (3 required for improved bagging)	56–2390	Heat Shield Kit	99–8922
Bagging System	79460	Oil Drain Valve	99–8923
Grass Gobbler	30131	Hitch Kit	99–8924

Part Description Abbreviations

Part descriptions in this catalog may include the following abbreviations.

Abbreviation	Meaning	Abbreviation	Meaning
AR	as required	INC	incorporated
ASM	assembly	LH	left hand
CARR	carriage	NI	nylon insert
DEG	degrees	PPH	Phillips pan head
FH	flat head	PTH	Phillips truss head
GA	gauge	PTO	power take off
HF	hex flange	RH	right hand
HH	hex head	SFH	slotted fillister head
HHF	hex head flange	SHH	slotted hex head
HLH	hex lag head	SQH	square head
HJ	hex jam	SHWH	slotted hex washer head
HOC	height-of-cut	SPH	slotted pan head
HS	hex socket	SRH	slotted round head
HSBH	hex socket button head	STD	standard
HSFH	hex socket flat head	TAP	self tapping
HSH	hex socket head	TTH	Torx truss head
HWH	hex washer head	WH	wing head
HWHTF	hex washer head thread forming		

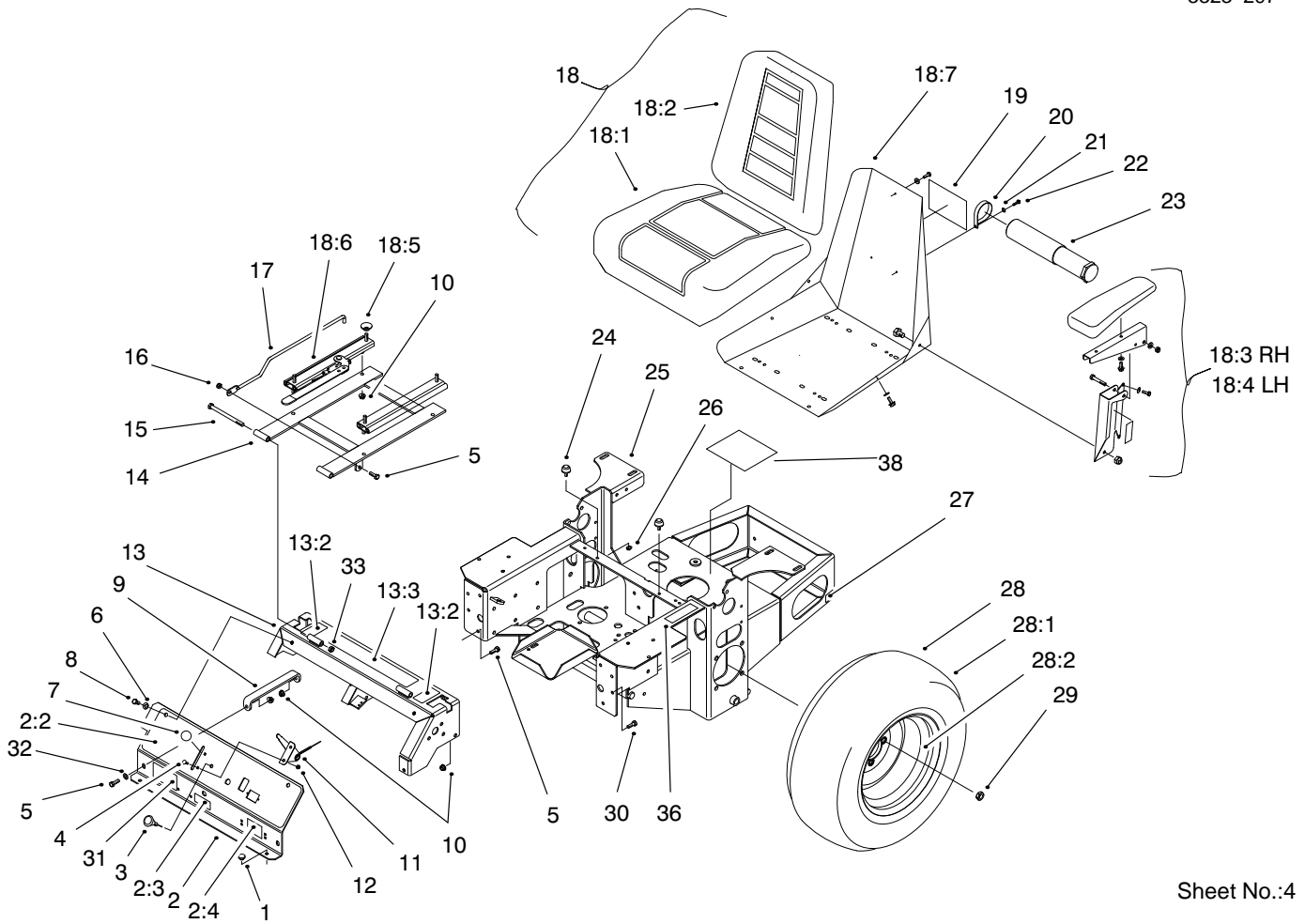


Sheet No.:2

Front Frame Assembly

Ref. No.	Part No.	Qty.	Description
1	E632586	2	Caster Wheel ASM
1:1	E633582	1	Wheel & Tire ASM
1:1:1	E633002	1	Tire
1:1:2	E633583	1	Wheel
1:1:3	254-79	2	Bearing-Roller, Cup
1:2	E633581	2	Spacer-Bearing
1:3	E633580	2	Seal-Bearing
1:4	254-78	2	Cone-Bearing
1:5	E633579	1	Spacer-Caster, Front
2	3296-45	2	Nut-Lock NI
3	E632511	2	Caster
4	E543511	2	Seal-Grease
5	254-94	4	Bearing-Taper/Cone
6	E633508	6	Washer-Belleview
7	3296-51	2	Nut-Lock NI
8	E543513	2	Cap-Grease
9	322-3	6	Screw-HH
10	3256-23	4	Washer-Flat
11	99-3940	1	Floorpan-Front
11:2	E633553	1	Pad-Antiskid
11:3	E633737	1	Decal- Z-Master
12	E653049	1	Hinge-Floorpan
13	99-3930	1	Footrest ASM
13:2	99-3924	1	Decal-Service
13:3	98-5954	1	Decal-Missing, Cover
13:4	E633553	1	Pad-Antiskid

Ref. No.	Part No.	Qty.	Description
14	3229-10	10	Screw-CARR
15	32128-33	10	Nut-HF
16	3230-1	2	Screw-CARR
17	99-3870-01	2	Bracket-Floorpan
18	32128-20	8	Nut-HF
19	88-1270	1	Decal-Safety STD
20	99-3931	1	Front Frame ASM
20:2	E633818	1	Decal
21	32151-103	6	Ring-Snap
22	3256-29	6	Washer-Flat
23	3290-357	12	Nut-Flange, Lock
24	E303327	12	Washer-Spring, Disc
25	323-7	12	Screw-HH
26	3217-11	8	Nut-Hex
27	E633441	4	Swivel-Mount, Deck
28	3218-6	4	Nut-Jam
29	3256-7	2	Washer-Flat
30	E653011	2	Rod-Deck Lift
31	E653009	2	Spring-Assist, Lift
32	3256-27	2	Washer-Flat
33	99-3871-01	1	LH Lift Arm ASM
34	99-3872-01	1	RH Lift Arm ASM
35	302-58	4	Zerk
36	E811010	2	Plug-Swivel, Caster
37	E800339	2	Screw-HH
38	254-72	4	Bearing-Taper/Cup

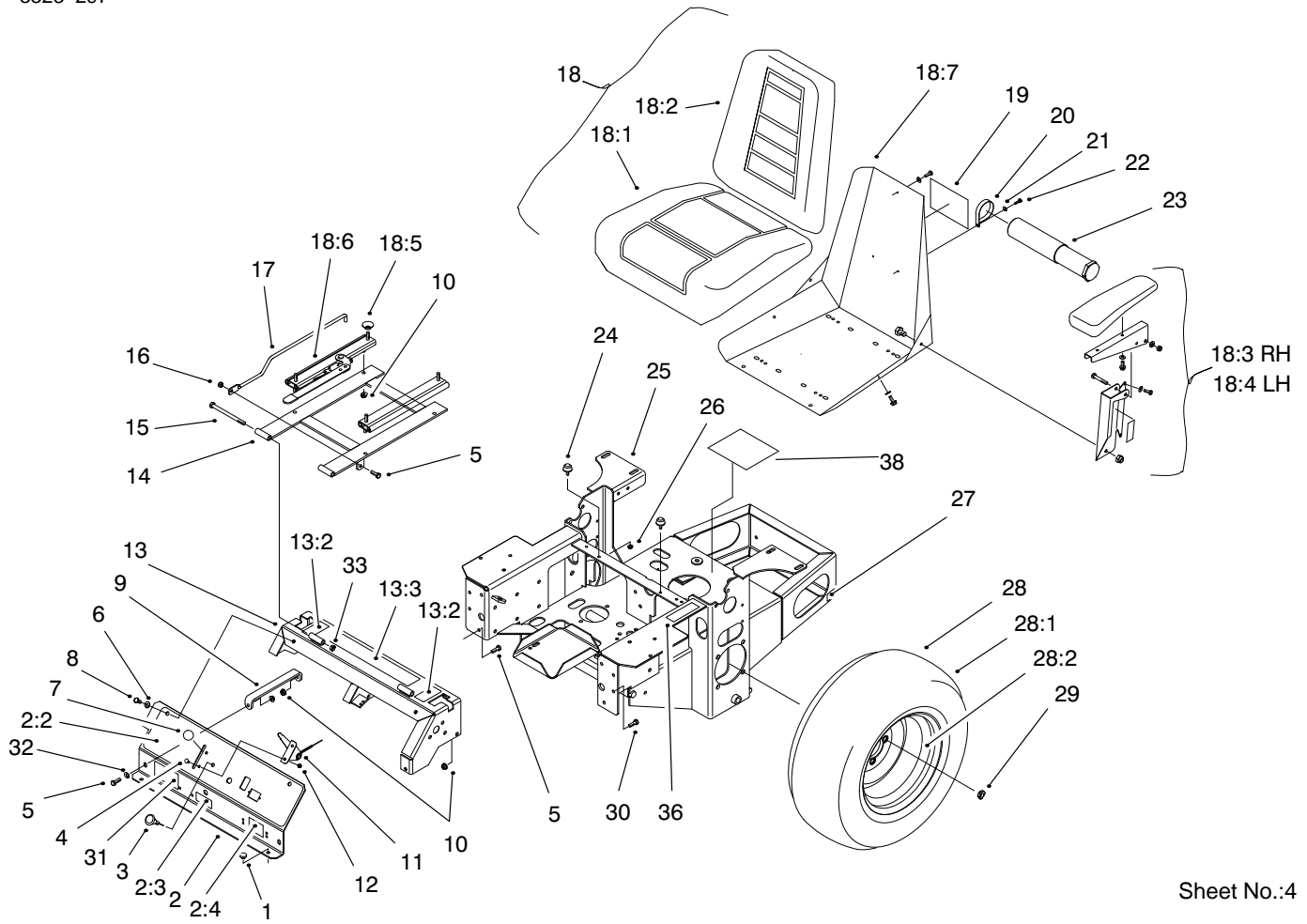


Sheet No.:4

Main Frame

Ref. No.	Part No.	Qty.	Description
1	E513658	2	Bumper-Catcher, Grass
2	99-3932	1	Control Panel ASM
2:2	99-3942	1	Decal-Panel, Control
2:3	E633346	1	Decal-Valve, Fuel
2:4	98-4387	1	Decal-Protection, Ear
3	E603336	1	Control-Choke, Push-Pull
4	E807513	2	Bolt-CARR
5	322-5	3	Screw-HH
6	3256-23	2	Washer-Flat
7	E513592	1	Knob-Ball, Red
8	322-3	3	Screw-HH
9	E653089	1	Bracket-Panel, Instrument
10	32128-20	12	Nut-HF
11	E633696	1	Cable-Throttle
12	3296-2	2	Nut-Lock
13	99-3933	1	Console ASM
13:2	E633354	2	Decal-Control, Motion
13:3	E513747	1	Decal-Battery
14	E632187	1	Frame-Seat
15	321-21	2	Screw-HH
16	3296-29	1	Nut-Lock
17	E653495	1	Rod-Hold Up, Seat
18	E633705	1	Seat ASM

Ref. No.	Part No.	Qty.	Description
18:1	E543407	1	Cushion-Seat
18:2	E633709	1	Cushion-Backrest
18:3	E633710	1	Armrest-RH
18:4	E633711	1	Armrest-LH
18:5	E543401	4	Spacer-Track
18:6	E643255	1	Track-Locking, 4"
18:7	E633859	1	Frame-Seat
19	93-7340	1	Decal-Toro
20	2412-120	2	R-Clamp
21	3256-14	2	Washer-Flat
22	32144-34	2	Screw-Forming, Thread
23	74-0720	1	Tube-Manual
24	E523420	2	Bumper
25	E652470	1	Frame-Main
26	32128-33	2	Nut-HF
27	65-2690	2	Decal-Surface, Hot
28	E653159	2	Wheel And Tire ASM
28:1	E653160	1	Tire
28:2	E653161	1	Wheel
29	E513011	8	Nut-Wheel
30	322-2	6	Screw-HH
31	99-8909	1	Decal-Z149
32	3256-3	2	Washer-Flat
33	3296-39	2	Nut-Lock, NI

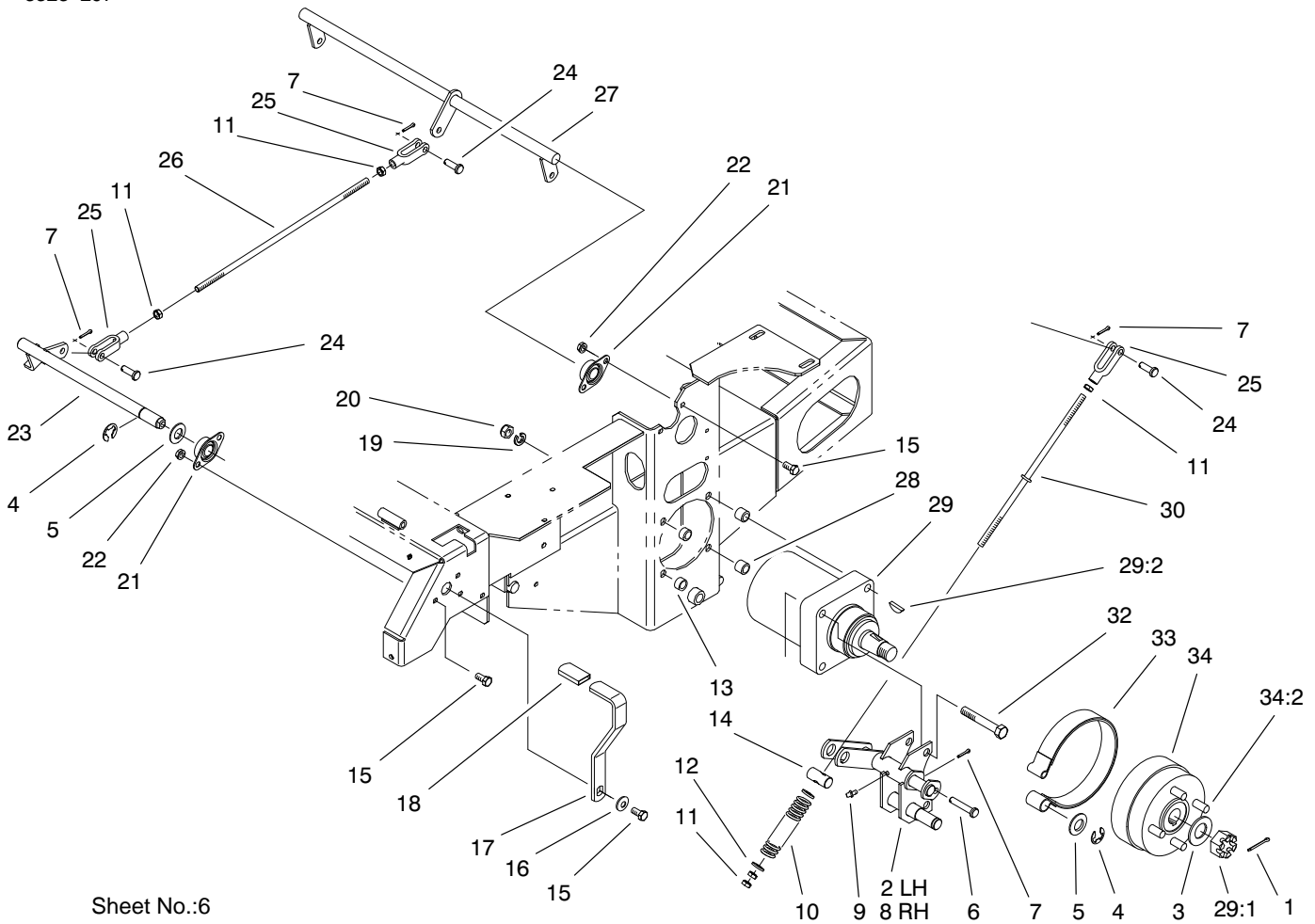


Sheet No.:4

Main Frame

Ref. No.	Part No.	Qty.	Description
36	E603845	1	Decal-Release, Drive Wheel
38	E643372	1	Decal-Material, Hazardous

Ref. No.	Part No.	Qty.	Description

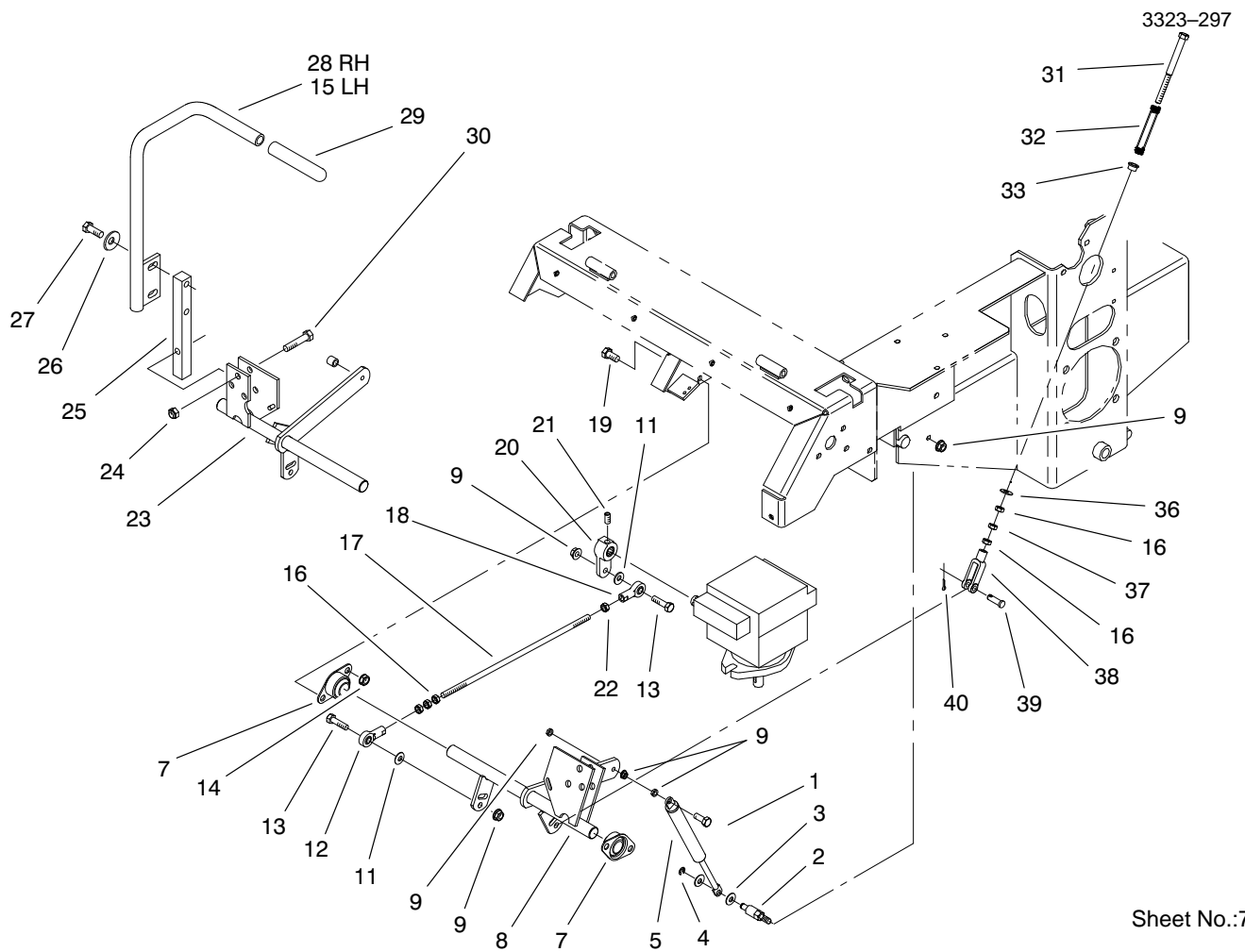


Sheet No.:6

Parking Brake System Assembly

Ref. No.	Part No.	Qty.	Description
1	E806800	2	Pin-Cotter
2	E652134	1	Bracket-Brake, LH
3	E523157	2	Spacer
4	E808514	3	Ring-Retaining
5	3256-28	3	Washer-Flat
6	E808283	2	Pin-Clevis
7	3272-10	6	Pin-Cotter
8	E652135	1	Bracket-Brake, RH
9	E811007	2	Fitting-Grease
10	E633454	2	Spring-Brake
11	3219-3	8	Nut-Hex
12	3256-4	4	Washer-Flat
13	E653069	4	Spacer
14	E633144	2	Pin-Trunion
15	323-4	9	Screw-HH
16	E303327	1	Washer-Spring, Disc
17	E653074	1	Handle-Brake, Park
18	E633268	1	Grip-Lever, Brake
19	3253-7	8	Washer-Lock/Sp
20	3217-9	8	Nut-Hex
21	E633102	4	Bearing-Flange, Side
22	3290-357	8	Nut-Flange, Lock
23	E652085	1	Shaft-Brake
24	E808285	4	Pin-Clevis
25	E633131	4	Yoke-Linkage, Brake

Ref. No.	Part No.	Qty.	Description
26	E653061	1	Linkage-Handle, Brake
27	E652073	1	Crank-Brake
28	E653068	4	Spacer
29	E523328	2	Motor-Wheel
29:1	E809036	1	Nut-Castle
29:2	E807020	1	Key-Woodruff
30	E633477	2	Rod-Brake
32	325-13	8	Screw-HH
33	E633693	2	Band-Brake
34	E634927	2	Hub And Drum ASM
34:2	E633926	4	Stud-Wheel

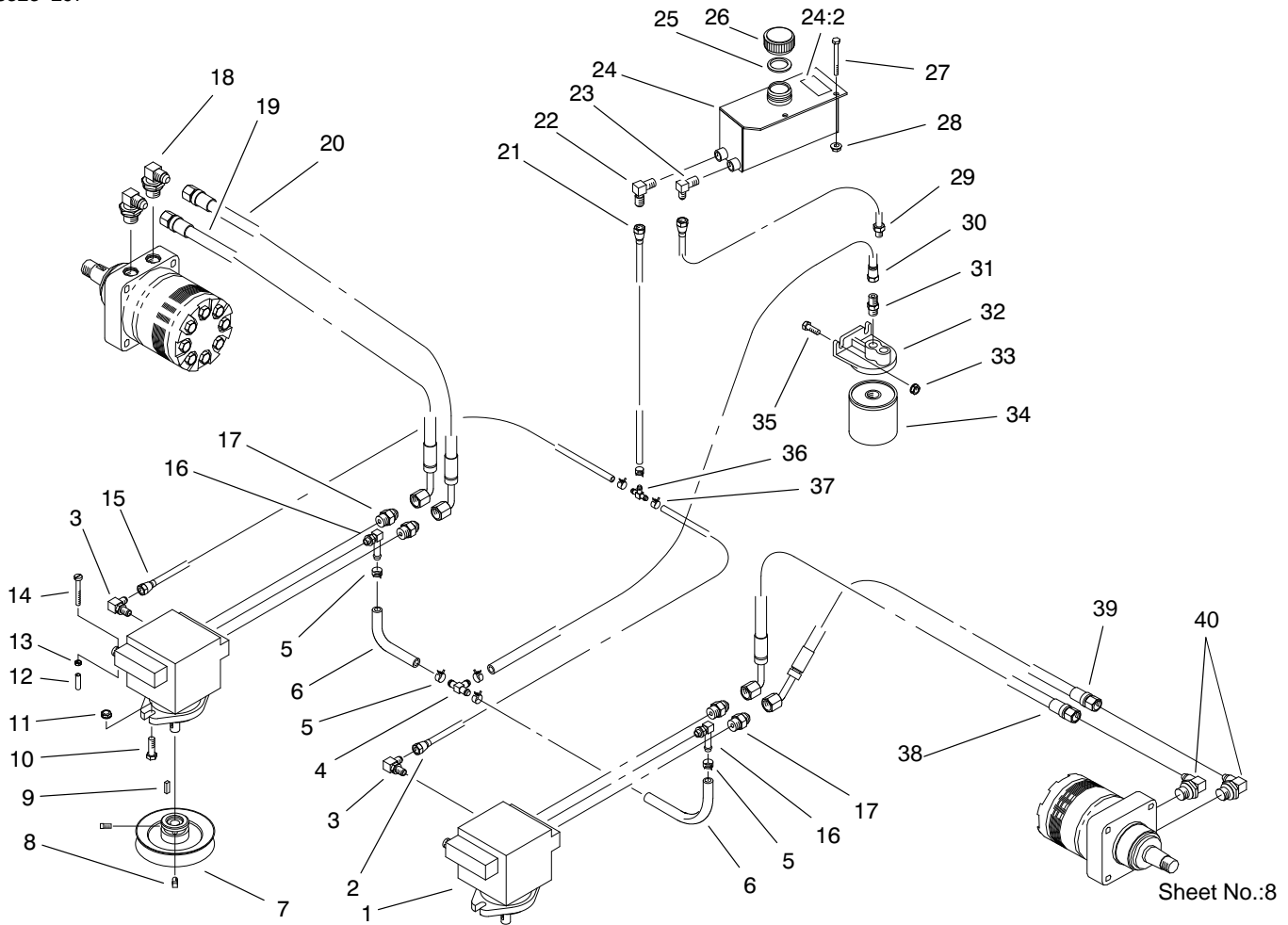


Sheet No.:7

Motion Control System Assembly

Ref. No.	Part No.	Qty.	Description
1	322-17	2	Screw-HH
2	E653316	2	Pin-Dampner
3	3256-23	6	Washer-Flat
4	E808512	2	E-Ring
5	E523027	2	Damper-Control
7	E633102	4	Bearing-Flange, Side
8	E652467	1	Motion Control, LH
9	32128-20	12	Nut-HF
11	3256-3	4	Washer-Flat
12	E543017	2	Joint-Ball
13	322-6	4	Screw-HH
14	3290-357	8	Nut-Flange, Lock
15	E632191	1	Lever-LH
16	3219-2	10	Nut-Hex
17	E653046	2	Link-Control, Pump
18	E633152	2	Joint-Ball, LH Thread
19	323-4	8	Screw-HH
20	E653092	2	Arm-Control, Pump
21	E803022	2	Screw
22	E804524	2	Nut
23	E652466	1	Motion Control, RH
24	3296-39	6	Nut-Lock, NI
25	E633177	2	Arm
26	E303327	4	Washer-Spring, Disc
27	323-6	4	Screw-HH
28	E632193	1	Lever-RH

Ref. No.	Part No.	Qty.	Description
29	E633257	2	Grip-Control, Motion
30	323-9	6	Screw-HH
31	E603737	2	Bolt-Return, Neutral
32	E603807	2	Spring-Return, Neutral
33	E603735	2	Bushing-Flanged, Nylon
36	3256-2	2	Washer-Flat
37	3220-2	2	Nut-Jam
38	E303105	2	Yoke-Adjustable
39	E808280	2	Pin-Clevis
40	3272-5	2	Pin-Cotter

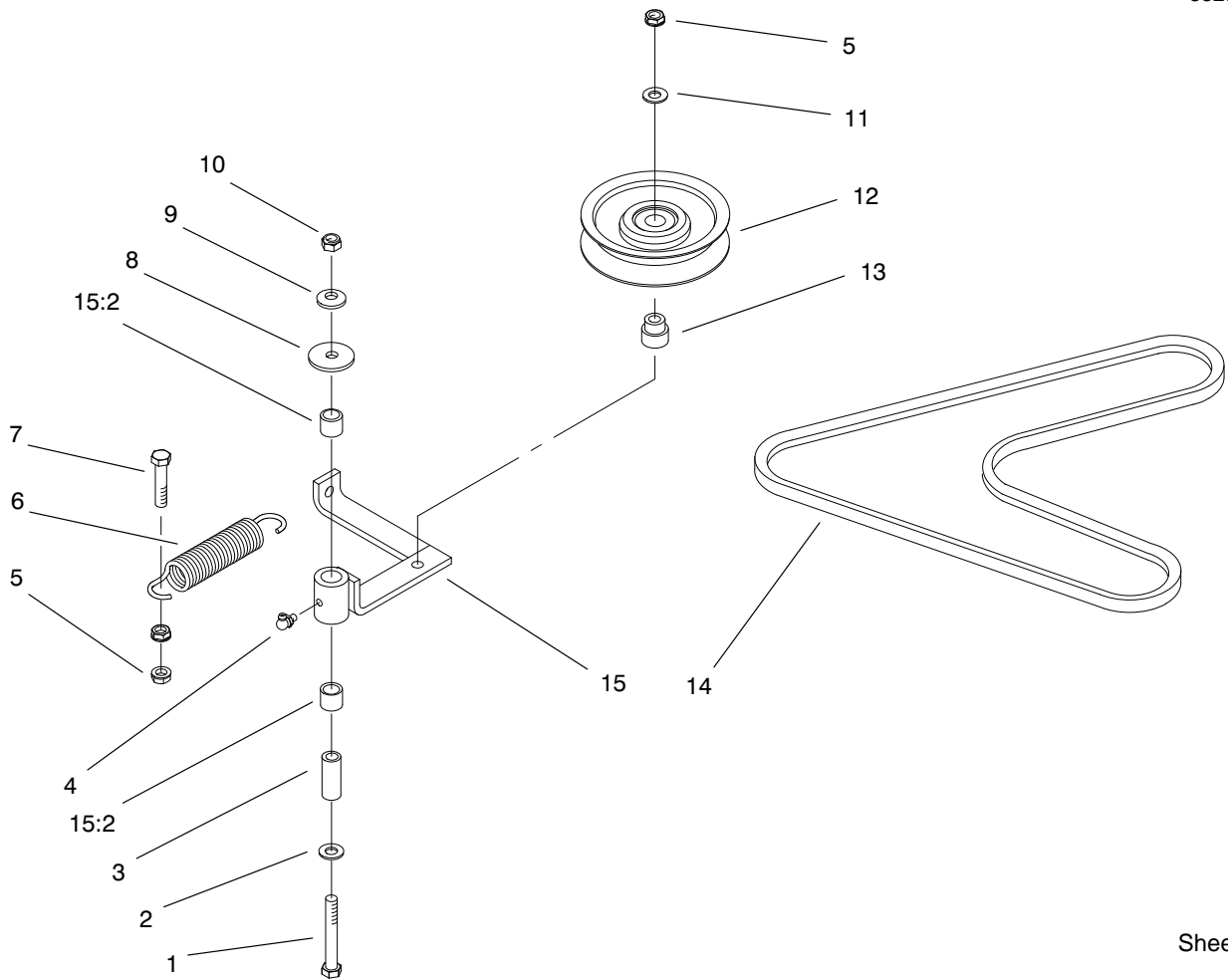


Sheet No.:8

Hydraulic System Assembly

Ref. No.	Part No.	Qty.	Description
1	E603841	2	Pump-Hydro
2	E632285	1	Hose-Pressure, Low
3	E513840	2	Elbow-90°
4	E603721	1	Fitting
5	E603827	5	Clamp-Hose
6	E413273	2	Hose-Pressure, Low
7	E653156	2	Sheave w/Hub
8	3242-4	4	Screw-Set, SQH
9	E807272	2	Key
10	323-7	4	Screw-HH
11	3290-357	4	Nut-Flange, Lock
12	E613073	2	Grip
13	3296-42	2	Nut-Lock
14	E801063	4	Screw-PPH
15	E632286	1	Hose-Pressure, Low
16	E603989	2	Elbow
17	E603990	4	Adapter
18	E633605	2	Elbow 90°
19	E653186	1	Hose
20	E653187	1	Hose
21	E654144	1	Hose
22	E603987	1	Elbow
23	E603988	1	Elbow
24	99-4625	1	Hydraulic Tank ASM
24:2	E523552	1	Decal-Hydraulic Tank, Hot Surface

Ref. No.	Part No.	Qty.	Description
25	E523103	1	Gasket-Tank/Cap
26	E513167	1	Cap-Reservior, Hydraulic
27	321-15	2	Screw-HH
28	32128-33	2	Nut-HF
29	E654320	1	Hose
30	E654509	1	Hose ASM
31	E513510	1	Connector-Male
32	E603720	1	Head-Filter
33	32128-20	2	Nut-HF
34	E633750	1	Filter-Hydro
34	E633752	1	Filter-Hydro, Winter
35	322-5	2	Screw-HH
36	E603722	1	Fitting
37	E603826	3	Clamp-Hose
38	E653409	1	Hose-Hyd
39	E653410	1	Hose-Hyd
40	E633786	2	Elbow 90°

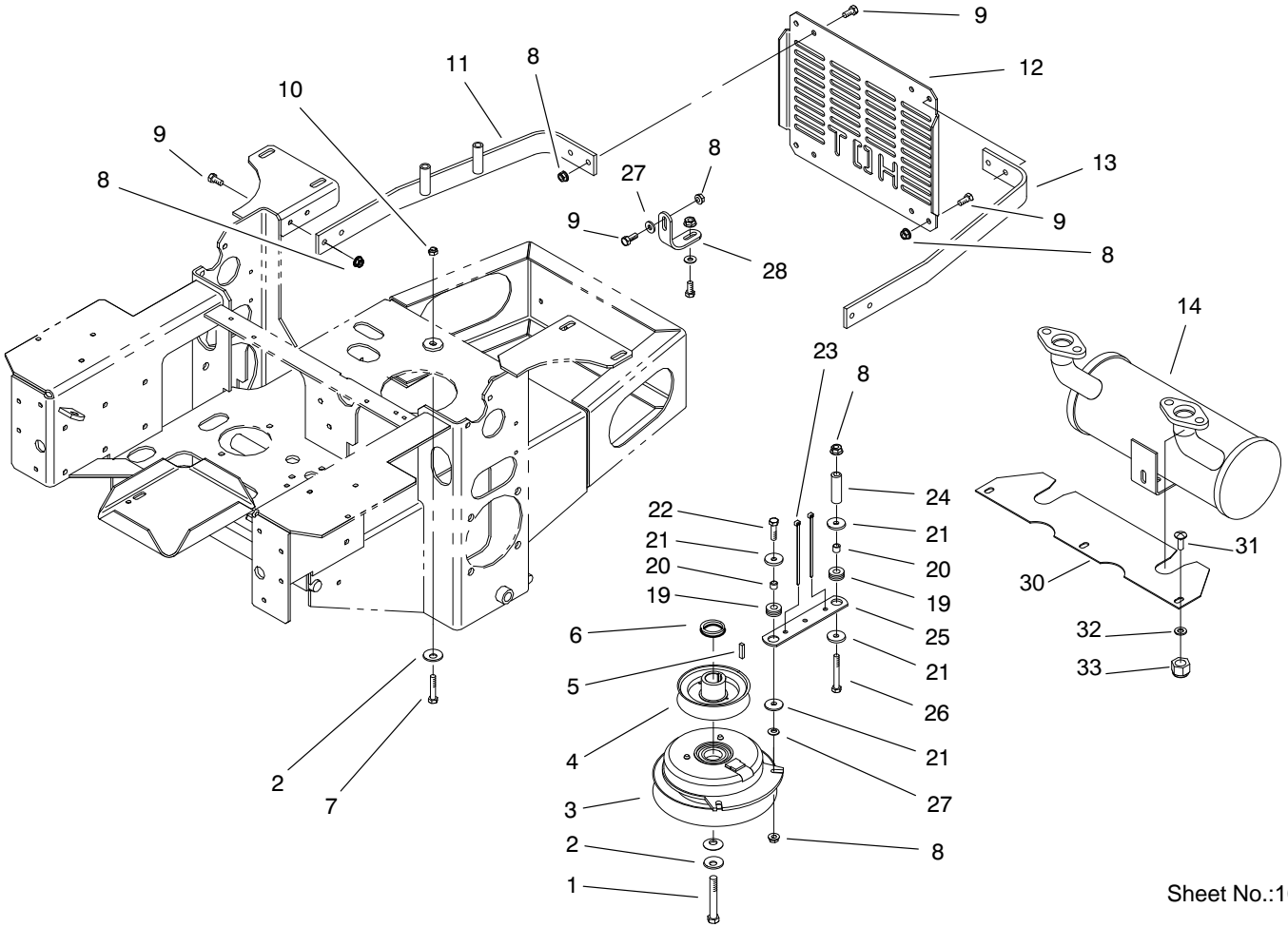


Sheet No.:9

Pump, Idler and Belt Assembly

Ref. No.	Part No.	Qty.	Description
1	323-13	1	Screw-HH
2	3256-4	1	Washer-Flat
3	E603044	1	Bushing
4	E811008	1	Fitting-Grease
5	3290-357	3	Nut-Flange, Lock
6	E603414	1	Spring-Extension
7	323-9	1	Screw-HH
8	E213069	1	Washer
9	E303327	1	Washer-Spring, Disc
10	3296-39	1	Nut-Lock, NI
11	3256-24	1	Washer-Flat
12	E603843	1	Pulley-Idler
13	E603496	1	Bushing-Idler
14	E653283	1	Belt-Drive, Pump
15	E654143	1	Idler Arm w/Bushings, Zerk
15:2	E513034	2	Bearing-Pivot

Ref. No.	Part No.	Qty.	Description



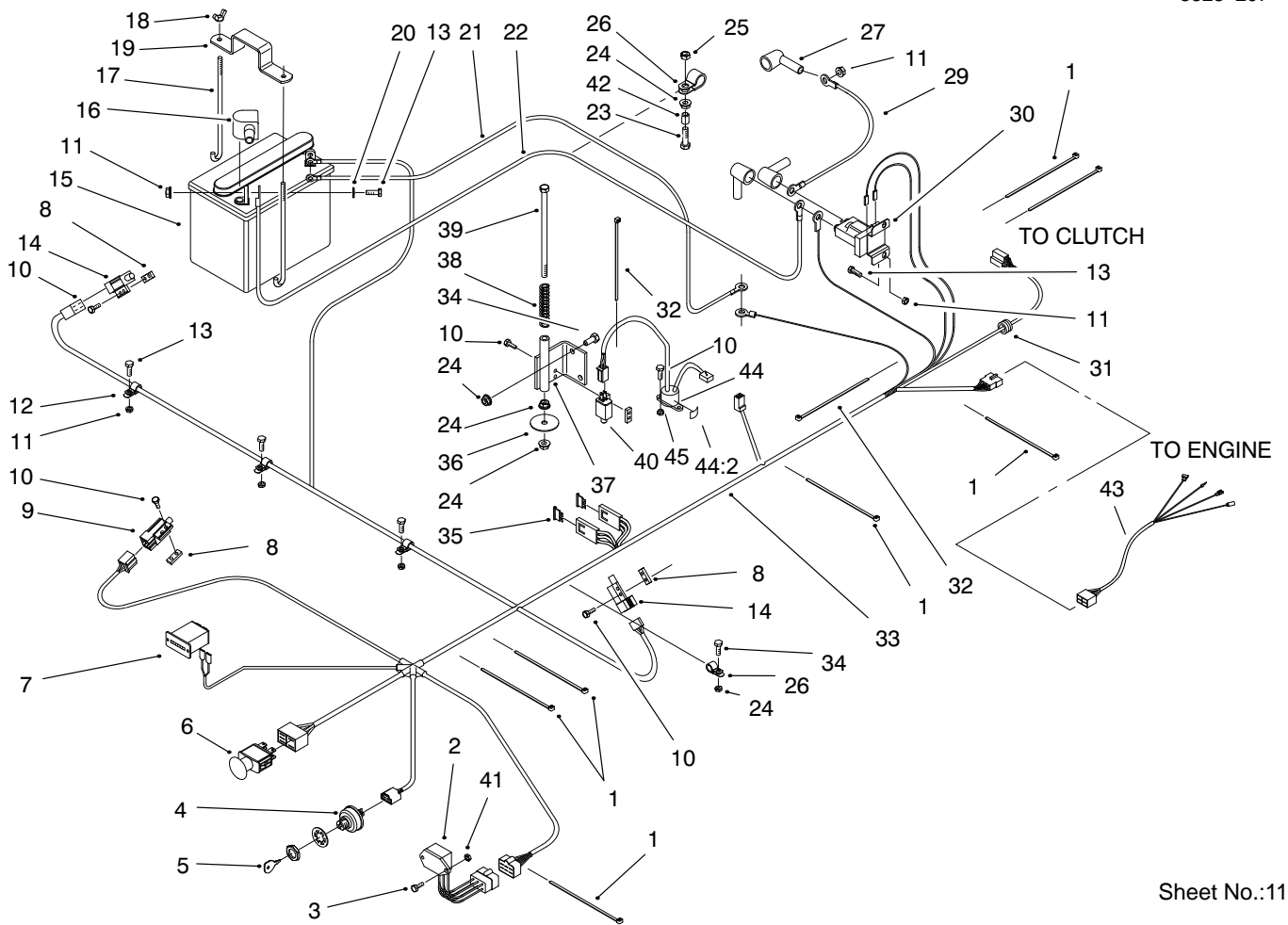
Sheet No.:10

Engine and Clutch Assembly

Ref. No.	Part No.	Qty.	Description
1	E800820	1	Screw-HH
2	E603610	2	Washer-Spring, Disc
3	E653048	1	Clutch
4	E653035	1	Sheave-Pump Drive
5	E807259	1	Key
6	E543214	1	Spacer-Crankshaft
7	322-9	4	Screw-HH
8	32128-20	16	Nut-HF
9	322-3	14	Screw-HH
10	3296-29	4	Nut-Lock
11	E652146	1	Strap-Guard, Engine
12	E653095	1	Shield-Guard, Engine
13	E653093	1	Strap-Guard, Engine
14	E653260	1	Muffler
19	E633630	2	Grommet
20	E633545	2	Spacer-Grommet
21	E613235	4	Washer
22	322-6	1	Screw-HH
23	E303335	2	Tie-Plastic
24	E523406	1	Bushing-Mount, Seat
25	E633543	1	Strap-Clutch/Brake
26	322-22	1	Screw-HH
27	3256-3	3	Washer-Flat
28	E653196	1	Bracket-Support, Muffler
*		1	Engine-19hp Kawasaki

Ref. No.	Part No.	Qty.	Description
			(FH601V-S07)
30	E653539	1	Shield-Heat
31	3230-1	3	Screw-CARR
32	3256-23	3	Washer-Flat
33	3296-29	3	Nut-Lock NI

* Not illustrated

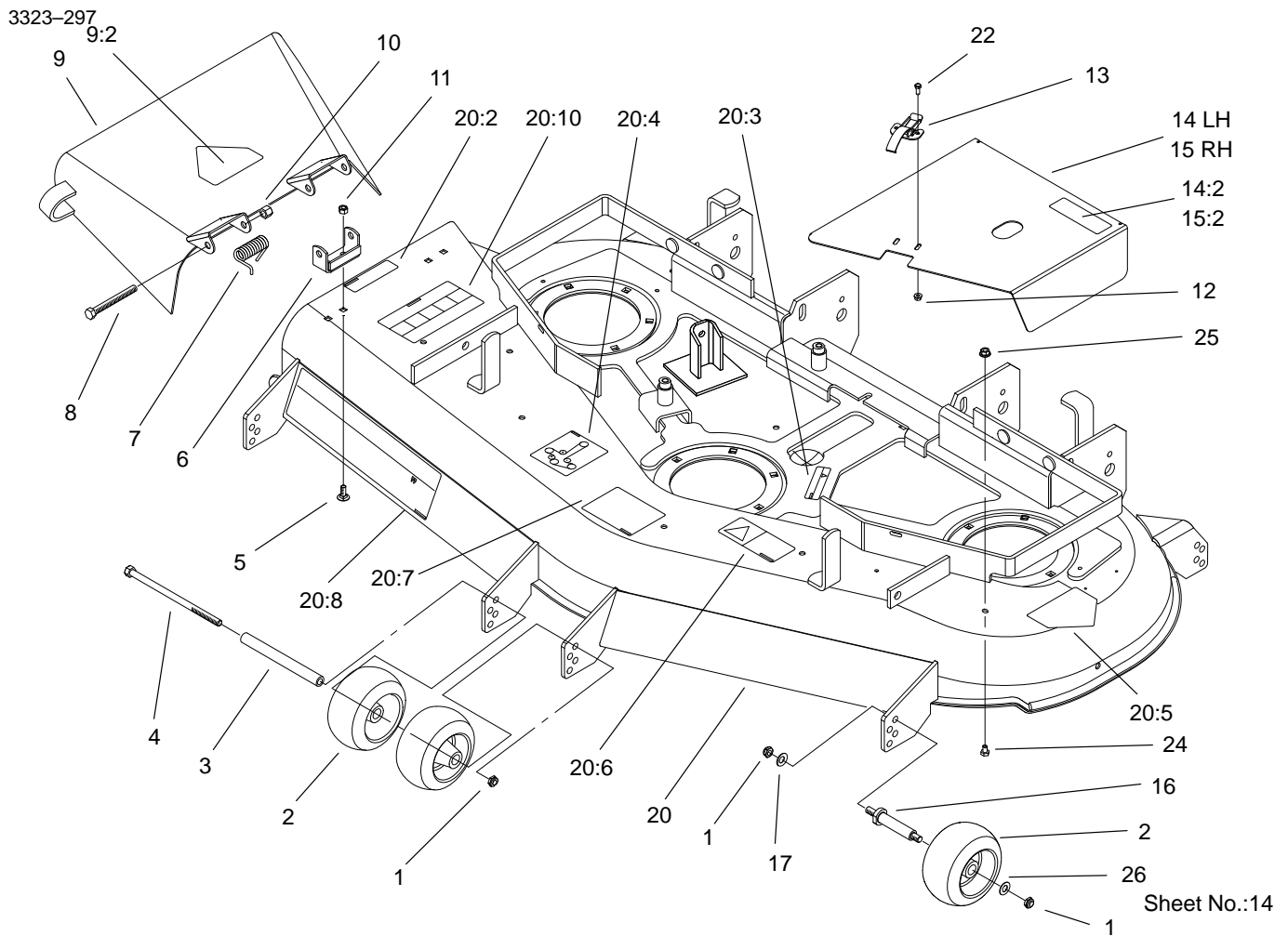


Sheet No.:11

Electrical System Assembly

Ref. No.	Part No.	Qty.	Description
1	E303335	7	Tie-Plastic
2	E543316	1	Module-Safety
3	E807533	2	Bolt-CARR
4	E543070	1	Switch-Ignition
5	63-8360	2	Key-Ignition
6	E633673	1	Switch-PTO
7	E513374	1	Meter-Hours, Engine
8	E633181	4	Plate-Tapped
9	E633110	1	Switch-Brake
10	32104-81	10	Screw-Head, Pan
11	32128-33	8	Nut-HF
12	E323229	3	Clip-Loom
13	321-4	7	Screw-HH
14	E633111	2	Switch-Lever, Drive
15	E603479	1	Battery-12v
16	E543391	1	Insulator-Battery
17	E633651	2	Bolt-Hold Down, Battery
18	E543792	2	Wingnut-Nyloc
19	E633652	1	Strap-Hold Down, Battery
20	3256-2	2	Washer-Flat
21	E523282	1	Cable-Ground
22	E523281	1	Cable-Battery
23	E800279	1	Bolt-TAP
24	32128-20	6	Nut-HF

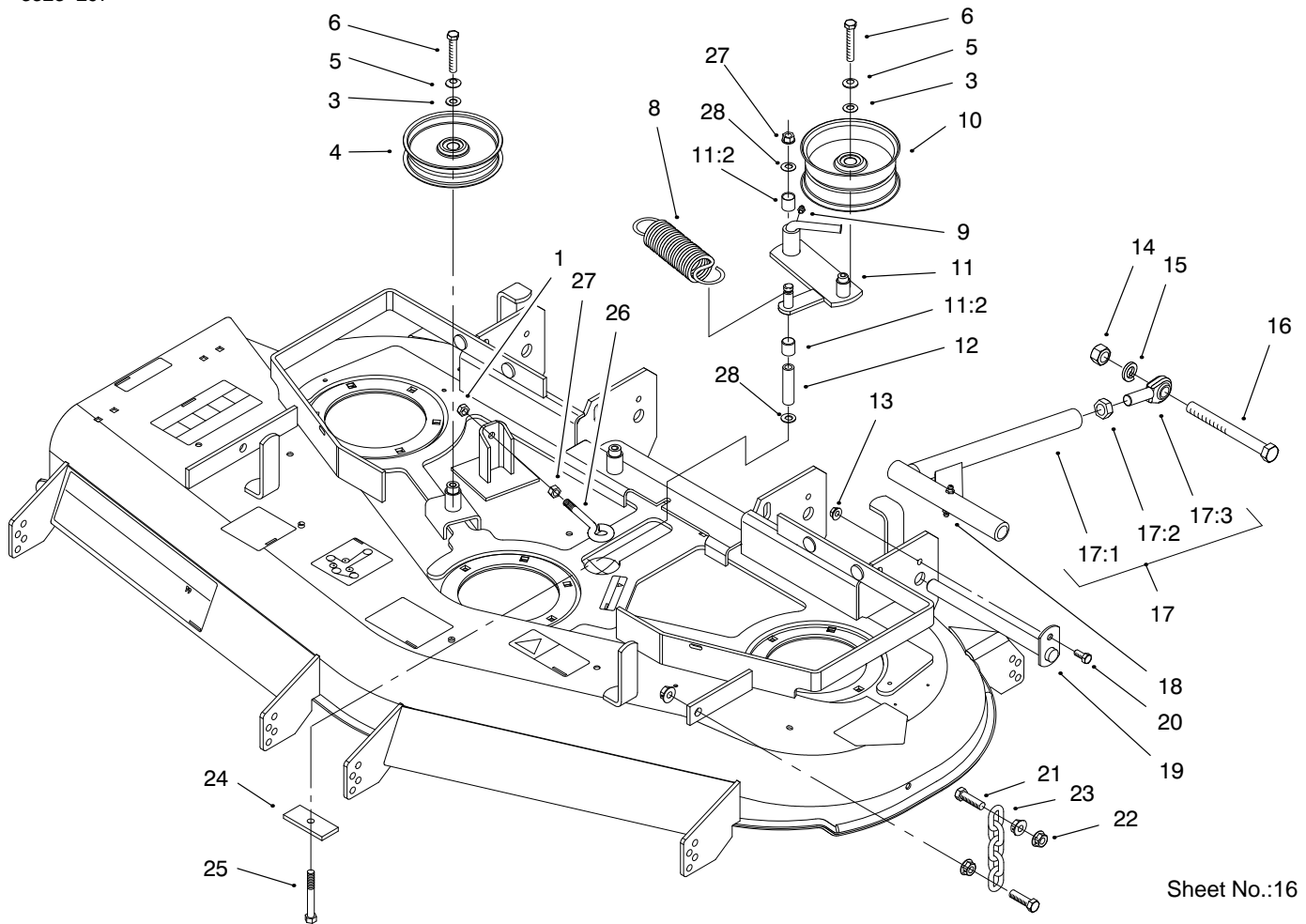
Ref. No.	Part No.	Qty.	Description
25	E804256	1	Nut-Hex, Nyloc
26	E633396	2	Clip-Loom
27	E543393	3	Insulator-Solenoid
29	E633306	1	Wire-Starter
30	E513075	1	Switch-Solenoid, 12v
31	E543286	1	Grommet
32	E303287	2	Tie-Plastic
33	E653154	1	Harness-Wiring
34	322-3	3	Screw-HH
35	E816001	2	Fuse-Blade Type, 20 Amp
36	E653036	1	Washer
37	E652072	1	Bracket-Switch, Seat
38	E523415	1	Spring-Switch, Seat
39	E800282	1	Screw-HH
40	E513152	1	Switch-Seat
41	3296-2	2	Nut-Lock
42	E633082	1	Bushing-Lever, Lift
43	E613262	1	Harness-Wire
44	E644427	1	Switch w/Decal
44:2	E643401	1	Decal
45	3296-2	2	Nut-Lock



52" Deck Assembly

Ref. No.	Part No.	Qty.	Description
1	3290-357	9	Nut-Flange, Lock
2	68-2730	6	Wheel-Gage
3	98-5967	1	Spacer-Wheel
4	323-28	1	Screw-HH
5	3230-18	4	Screw-CARR
6	29-5590-01	2	Bracket-Pivot
7	40-6230	2	Spring
8	3211-15	2	Screw-HH
9	98-5984	1	Deflector ASM
9:2	54-9220	1	Decal-Danger
10	3296-5	2	Nut-Lock, NI
11	32152-1	4	Nut-Lock
12	32128-17	4	Nut-Flange, Lock
13	249-21	2	Clamp-Slotted
14	99-3896	1	LH Cover ASM
14:2	67-5360	1	Decal-Danger
15	99-3895	1	RH Cover ASM
15:2	67-5360	1	Decal-Danger
16	99-2842	4	Spacer-Wheel
17	E303327	4	Washer-Spring, Disc
20	99-3875	1	52" Deck ASM
20:2	66-6380	1	Decal-Danger
20:3	98-5954	3	Decal-Missing, Cover
20:4	99-3943	1	Decal-Routing, Belt
20:5	43-8480	1	Decal-Danger

Ref. No.	Part No.	Qty.	Description
20:6	93-7818	1	Decal-Torque, Blade Bolt
20:7	98-3798	1	Decal-Wheel, Gage
20:8	98-5953	1	Decal-Sfs
20:10	66-1340	1	Decal-Danger
22	3290-321	4	Screw-HWH
24	321-1	6	Screw-HH
25	32128-33	6	Nut-HF
26	E373034	4	Washer-Swivel



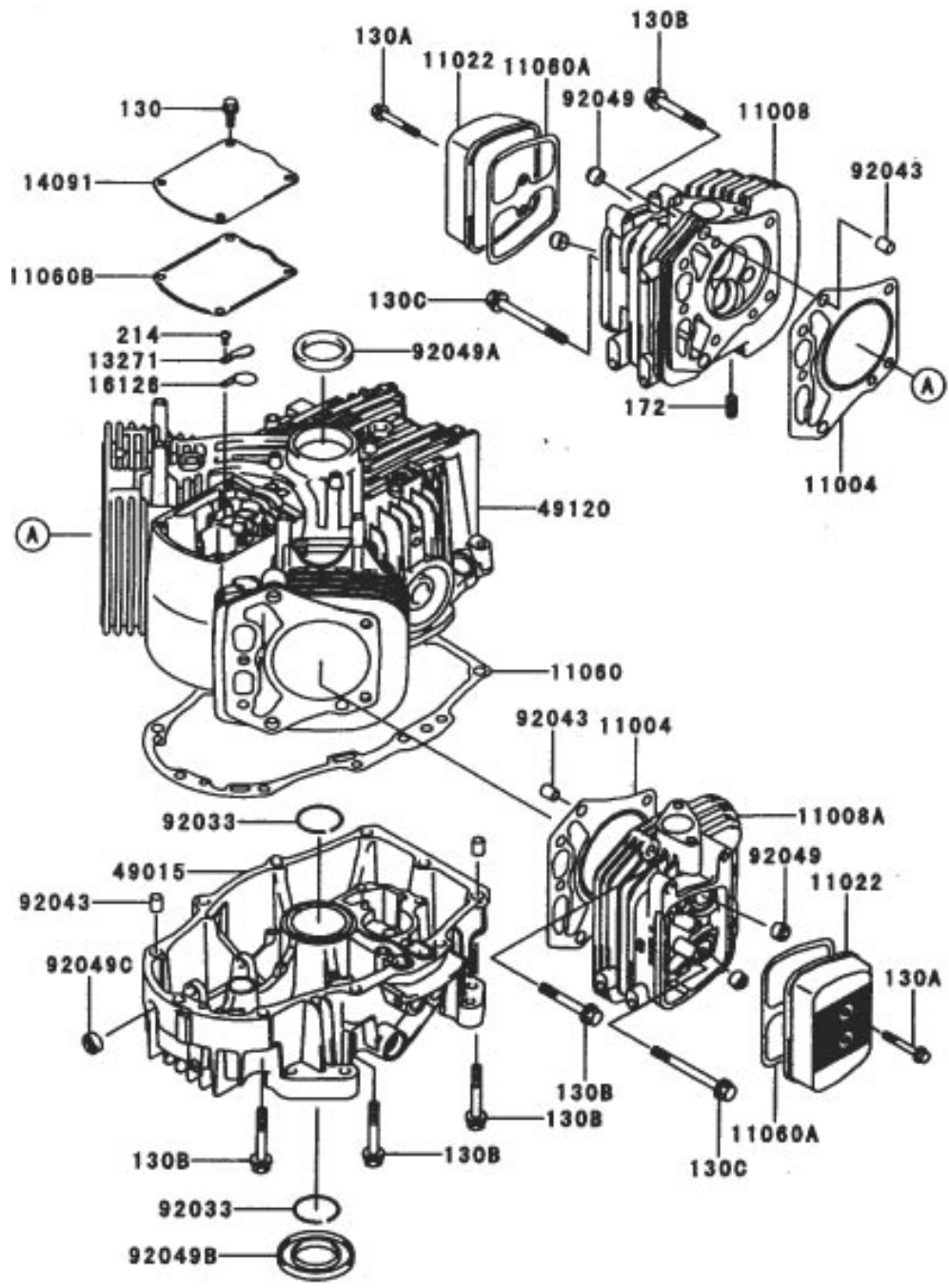
Sheet No.:16

Idler, Pulley/Lift Strut, Chains Assembly

Ref. No.	Part No.	Qty.	Description
1	3217-7	1	Nut-Hex
3	3256-24	3	Washer-Flat
4	E613098	2	Pulley-Idler
5	E303327	3	Washer-Spring, Disc
6	323-6	3	Screw-HH
8	E633151	1	Spring-Extension
9	E811008	1	Fitting-Grease
10	E413099	1	Pulley-Idler
11	99-3879	1	Idler Arm ASM w/Bushings
11:2	E513034	2	Bearing-Pivot
12	E603384	1	Bushing-Pivot, Idler
13	3296-41	2	Nut-Lock NI
14	3217-11	2	Nut-Hex
15	3253-8	2	Washer-Lock/Sp
16	E800344	2	Screw-HH
17	E634726	2	Strut ASM
17:1	E632690	1	Strut
17:2	3219-6	1	Nut-Hex
17:3	E633029	1	End-Rod, Spherical
18	302-58	4	Zerk
19	E632199	2	Pin-Strut, Deck
20	322-3	2	Screw-HH
21	324-6	8	Screw-HH
22	32128-37	16	Nut-Hex Flange
23	E633447	4	Chain-Lift, Deck

Ref. No.	Part No.	Qty.	Description
24	99-3946-01	1	Plate-Retainer, Bolt
25	E800805	1	Screw-HH
26	94-2547	1	Eyebolt
27	3296-39	2	Nut-Lock, NI
28	E809107	2	Washer-hardened

Cylinder/Crankcase Assembly Kawasaki FH601V-S07

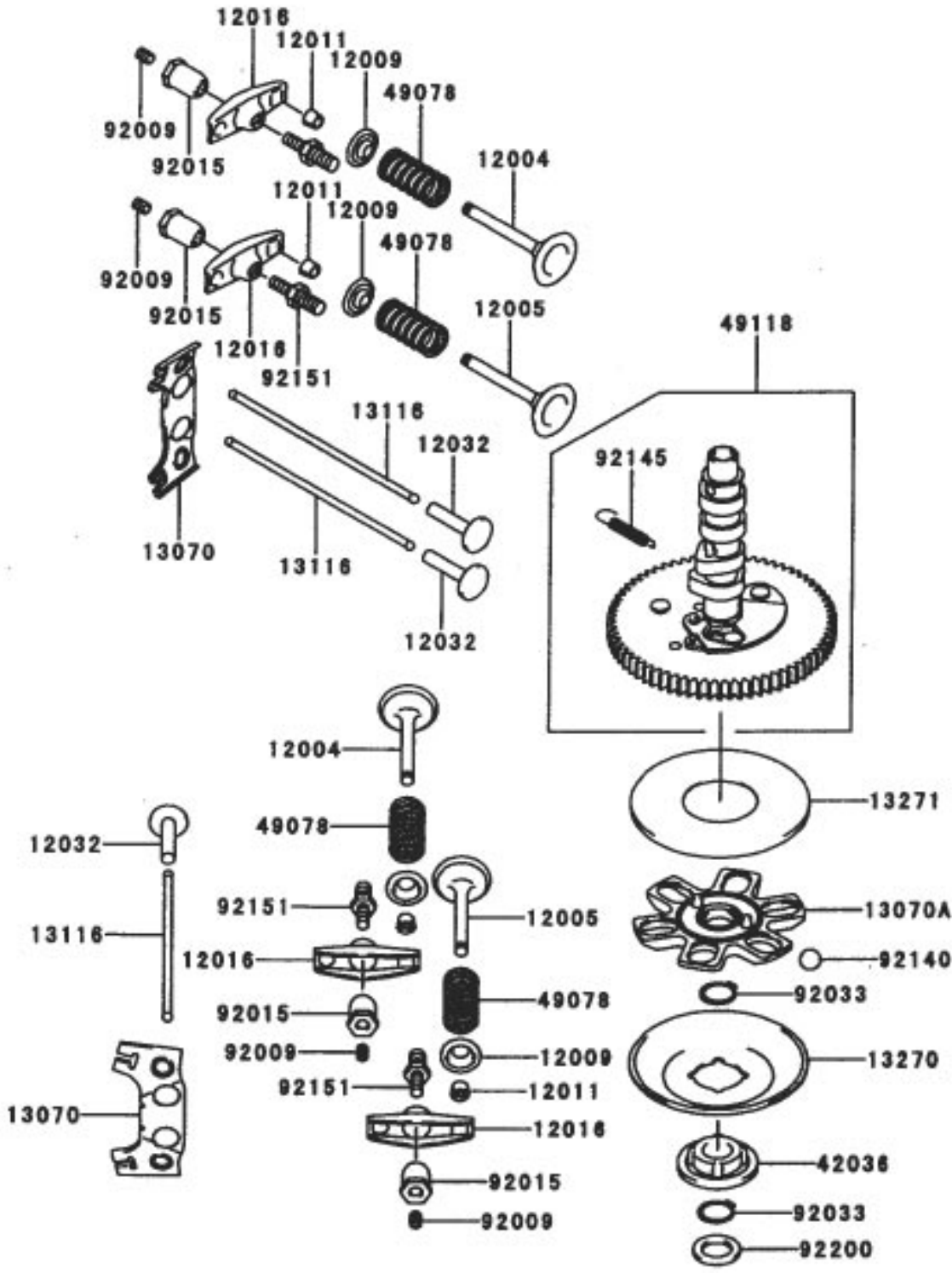


Cylinder/Crankcase Assembly Kawasaki FH601V-S07

Ref. No.	Part No.	Qty.	Description
11004	11004-7004	2	Gasket-Head
11008	11008-7003	1	Head-Comp-Cylinder No. 1
11008A	11008-7004	1	Head-Comp-Cylinder No. 2
11022	11022-7002	2	Case-Rocker
11060	11060-7012	1	Gasket, CrankCase Cover
11060A	11060-7013	2	Gasket, Rocker Case
11060B	11060-7014	1	Gasket, Breather
13271	13271-7006	1	Plate
14090	14091-7004	1	Cover
16126	16126-7001	1	Valve
49015	49015-6220	1	Cover-Crankcase
49120	49120-6122	1	Crankcase-Comp
92033	92033-7004	2	Ring-Snap
92043	92043-7001	6	Pin
92049	92049-7001	4	Seal-Oil
92049A	92049-7002	1	Seal-Oil
92049B	92049-7004	1	Seal-Oil
92049C	92049-7005	1	Seal-Oil
130	130B0612	4	Bolt-Flanged
130A	130B0640	4	Bolt-Flanged
130B	130T0850	18	Bolt-Flanged
130C	130T0875	2	Bolt-Flanged
172	172G0818	4	Bolt-Stud
214	214B0408	1	Screw-Pan

Ref. No.	Part No.	Qty.	Description

Valve/Camshaft Assembly Kawasaki FH601V-S07

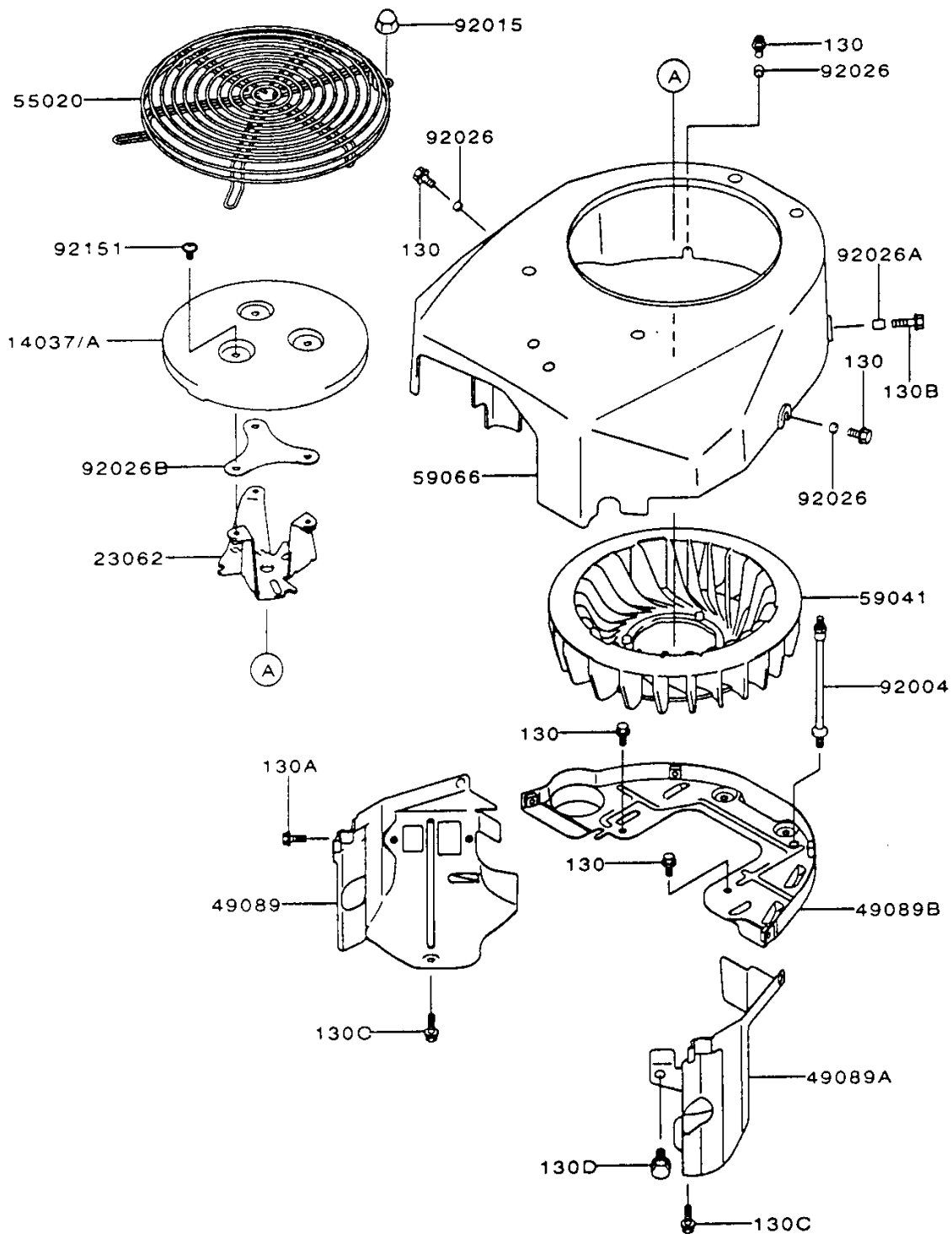


Valve/Camshaft Assembly Kawasaki FH601V-S07

Ref. No.	Part No.	Qty.	Description
12004	12004-7002	2	Valve-Intake
12005	12005-7002	2	Valve-Exhaust
12009	12009-7001	4	Retainer-Valve Spring
12011	12011-2056	8	Collet
12016	12016-7002	4	Arm-Rocker
12032	12032-7001	4	Tappet
13070	13070-7003	2	Guide
13070A	13070-7004	1	Guide
13116	13116-7001	4	Rod-Push
13270	13270-7002	1	Plate
13271	13271-7007	1	Plate
42036	42036-7001	1	Sleeve
49078	49078-7002	4	Spring-Engine Valve
49118	49118-7003	1	Camshaft-Comp
92009	92009-2341	4	Screw
92015	92015-2253	4	Nut
92033	92033-7001	2	Ring-Snap
92140	92140-7002	6	Ball
92145	92145-7001	1	Spring
92151	92151-7001	4	Bolt
92200	92200-7001	1	Washer

Ref. No.	Part No.	Qty.	Description

Cooling-Equipment Assembly Kawasaki FH601V-S07

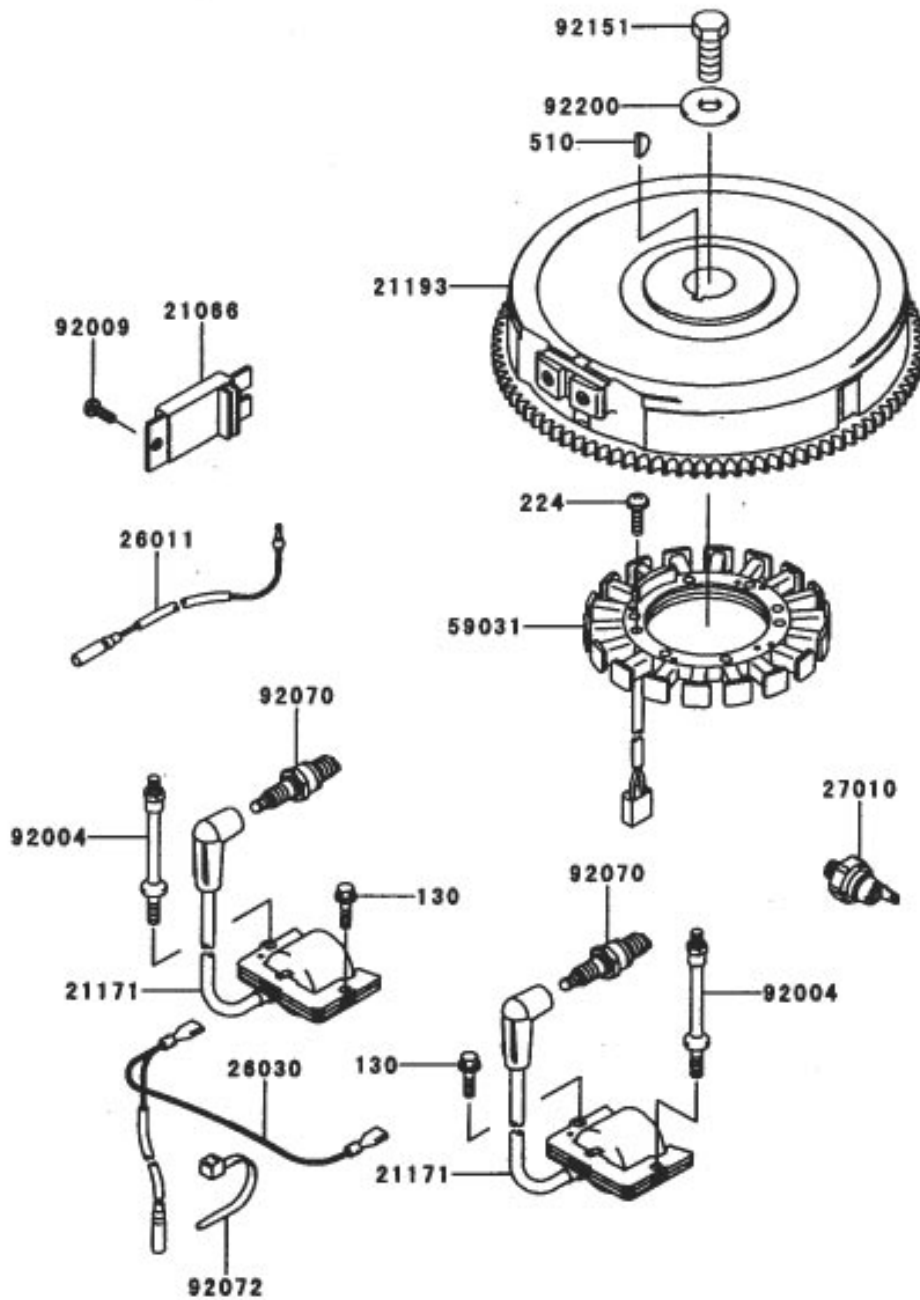


Cooling-Equipment Assembly Kawasaki FH601V-S07

Ref. No.	Part No.	Qty.	Description
13270	13270-7007	1	Plate
14037	14037-7008-9H	1	Screen
14091	14091-7002	1	Cover
23062	23062-7005	1	Bracket-Comp
49089	49089-7004	1	Shroud-Engine
49089A	49089-7005	1	Shroud-Engine
49089B	49089-7006	1	Shroud-Engine
55020	55020-7002	1	Guard
59041	59041-7003	1	Fan
59066	59066-7004	1	Housing-Fan
92004	92004-2148	2	Stud
92015	92015-1170	4	Nut
92026	92026-7001	3	Spacer, 6.2x7.9x5
92026A	92026-7003	1	Spacer, 6.5x7.9x10.5
92026B	92026-7007	1	Spacer
92151	92151-7009	3	Bolt, 6x10
130	130B0612	5	Bolt-Flanged
130A	130B0620	2	Bolt-Flanged
130B	130B0816	1	Bolt-Flanged

Ref. No.	Part No.	Qty.	Description

Electric-Equipment Assembly Kawasaki FH601V-S07

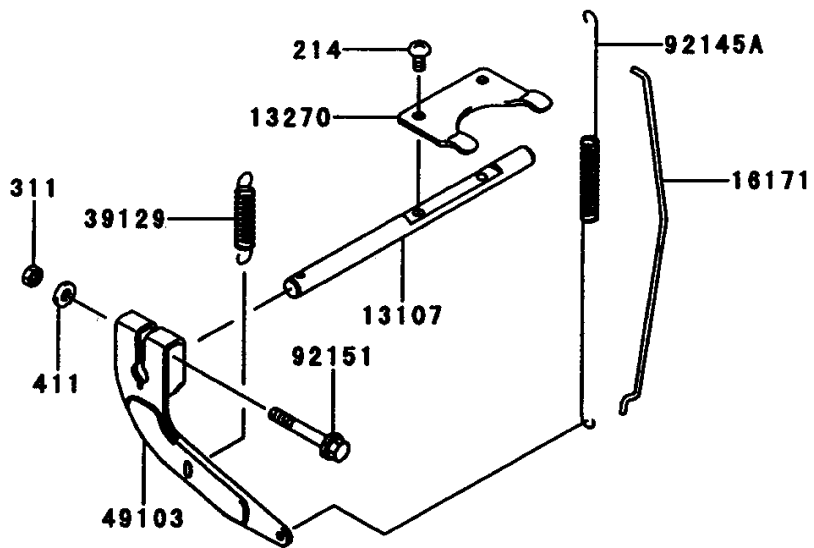
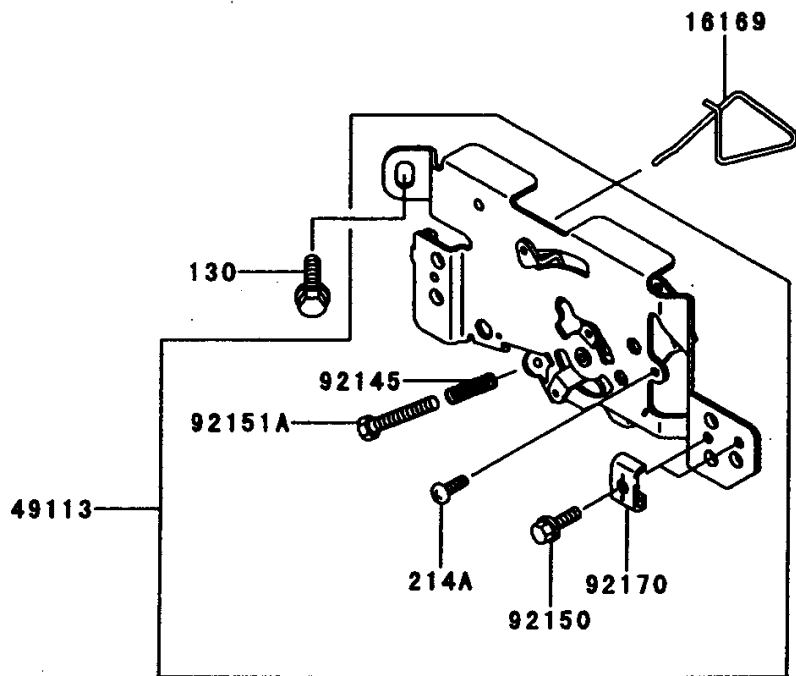


Electric-Equipment Assembly Kawasaki FH601V-S07

Ref. No.	Part No.	Qty.	Description
21066	21066-7003	1	Regulator-Voltage
21171	21171-7001	2	Coil-Assy-Ignition
21193	21193-7002	1	Flywheel-Assy
26011	26011-7008	1	Wire-Lead
26030	26030-7002	1	Harness
27010	27010-7001	1	Switch
59031	59031-7001	1	Coil-Charging
92004	92004-2147	2	Stud
92009	92009-2308	1	Screw
92070	92070-2088	2	Plug-Spark,BPR5ES
92072	92072-7003	2	Band
92151	92151-2097	1	Bolt, 12x30
92220	92220-7002	1	Washer
130	130B0620	1	Bolt-Flanged
224	224B0520	4	Screw-Pan-WP-Cros
510	510A5100	1	Key-Woodruff

Ref. No.	Part No.	Qty.	Description

Control-Equipment Assembly Kawasaki FH601V-S07

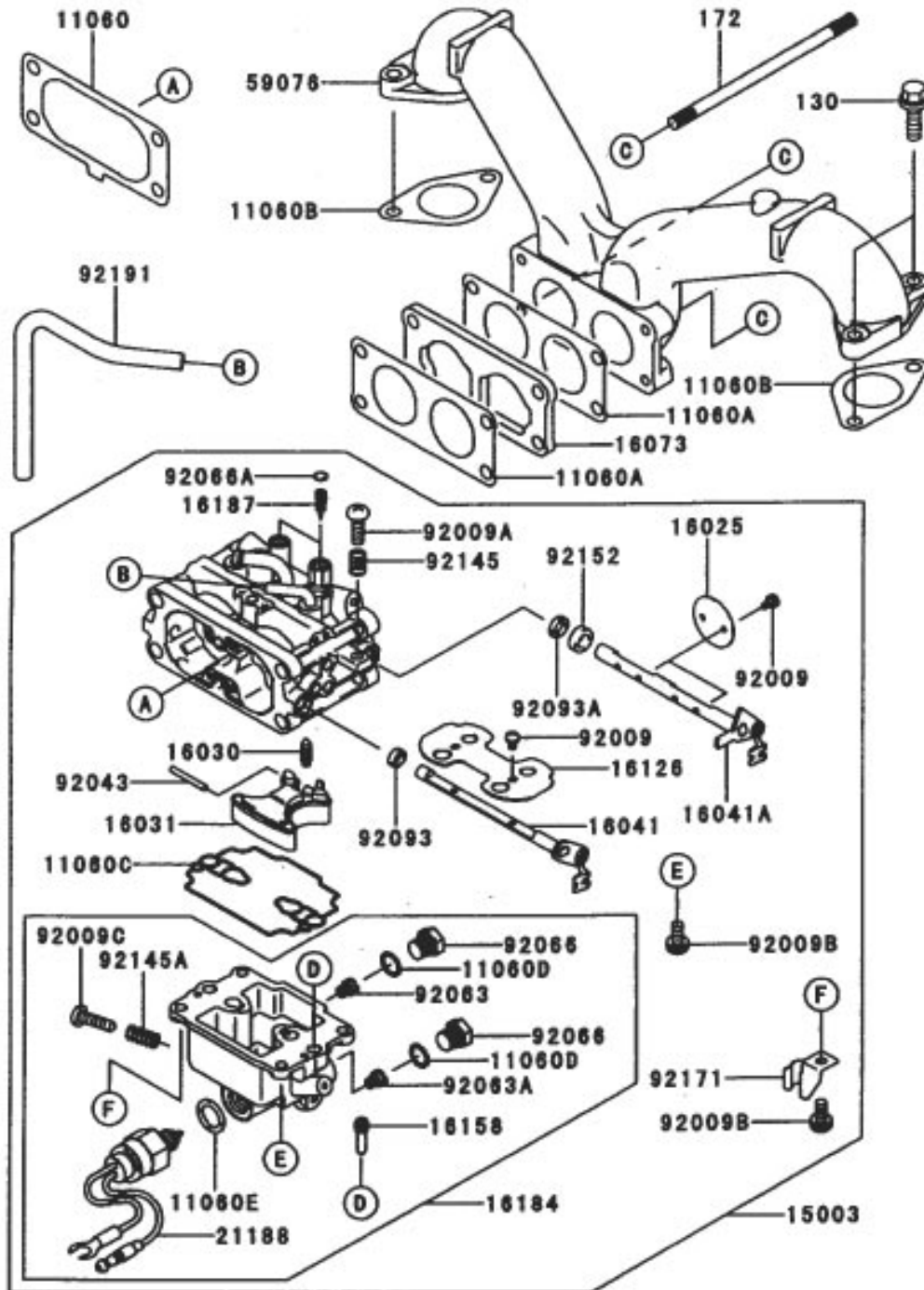


Control-Equipment Assembly Kawasaki FH601V-S07

Ref. No.	Part No.	Qty.	Description
13107	13107-7004	1	Shaft
13270	13270-7006	1	Plate
16169	16169-7003	1	Link-Choke
16171	16171-7004	1	Link
39129	39129-7004	1	Spring-Governor
49103	49103-7001	1	Arm-Governor
49113	49113-7007	1	Panel-Comp-Control
92145	92145-7005	1	Spring
92145A	92145-7009	1	Spring
92150	92150-2182	2	Bolt, 5x18
92151	92151-7006	1	Bolt, 6x30
92151A	92151-7014	1	Bolt, 5x30
92170	92170-7001	2	Clamp
130	130B0612	2	Bolt-Flanged
214	214B0408	2	Screw-Pan
214A	214B0412	1	Screw-Pan
311	311B0600	1	Nut-Hex
411	411B0600	1	Washer-Plain

Ref. No.	Part No.	Qty.	Description

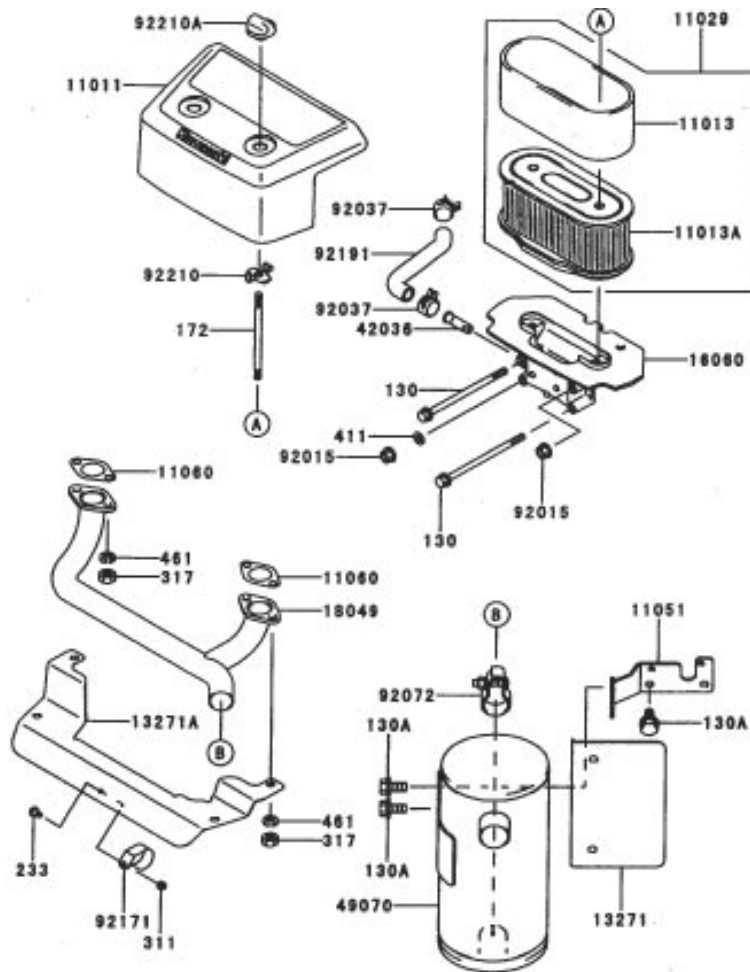
Carburetor Assembly Kawasaki FH601V-S07



Carburetor Assembly Kawasaki FH601V-S07

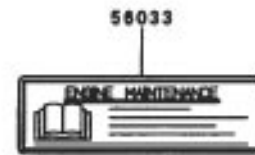
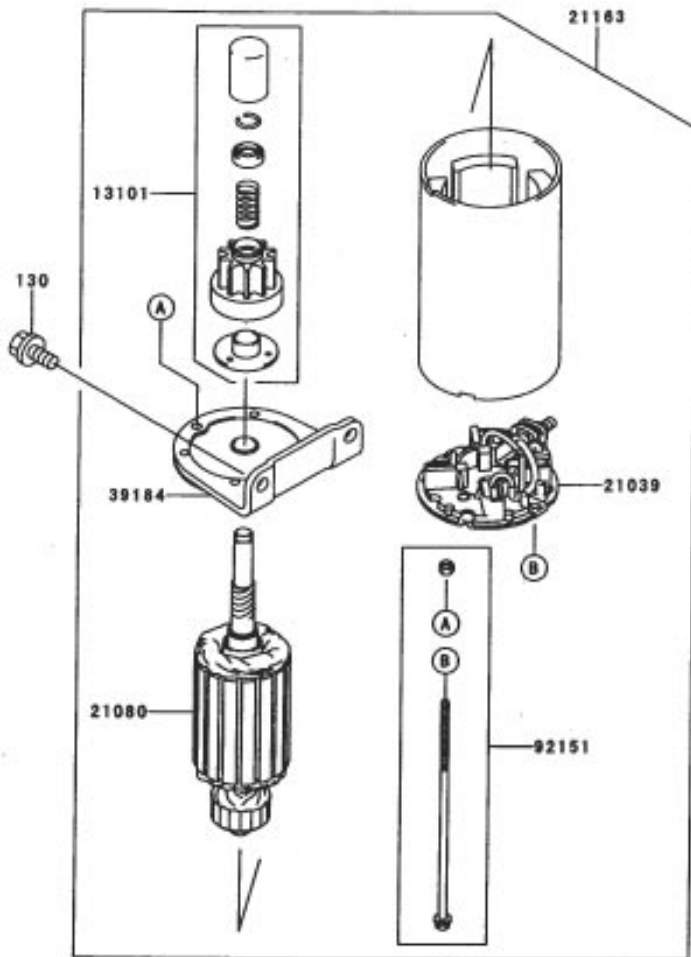
Ref. No.	Part No.	Qty.	Description
11060	11060-7009	1	Gasket, Air Filter
11060A	11060-7010	2	Gasket, Carburetor
11060B	11060-7011	2	Gasket
11060C	11060-7018	1	Gasket, Float Chamber
11060D	11060-7019	2	Gasket, Main Plug
11060E	11060-7020	1	Gasket, Solenoid
15003	15003-7001	1	Carburetor-Assy
16025	16025-7001	2	Valve-Throttle
16030	16030-7002	1	Valve-Float
16031	16031-7001	1	Float
16041	16041-7001	1	Shaft-Carburetor, Choke
16041A	16041-7002	1	Shaft-Carburetor Throttle
16073	16073-7003	1	Insulator
16126	16126-7004	1	Valve, Choke
16158	16158-7002	2	Jet-Slow, #60
16184	16184-7001	1	Chamber-Assy-Float
16187	16187-7002	2	Needle-Jet
21188	21188-7001	1	Solenoid
59076	59076-7002	1	Manifold-Intake
92009	92009-7003	6	Screw
92009A	92009-7004	1	Screw
92009B	92009-7005	4	Screw
92009C	92009-7006	1	Screw, Drain
92043	92043-7004	1	Pin-Float
92063	92063-7001	1	Jet-Main, #104
92063A	92063-7002	1	Jet-Main, #106
92066	92066-7008	2	Plug, Main Jet
92066A	92066-7009	2	Plug, Extension
92093	92093-7001	1	Seal
92093A	92093-7002	2	Seal
92145	92145-7010	1	Spring
92145A	92145-7011	1	Spring
92152	92152-7001	1	Collar
92171	92171-7001	1	Clamp
92191	92191-7010	1	Tube
130	130B0620	4	Bolt-Flanged
172	172G0105	2	Bolt-Stud

Ref. No.	Part No.	Qty.	Description



Air-Filter/Muffler Assembly Kawasaki FH601V-S07

Ref. No.	Part No.	Qty.	Description	Ref. No.	Part No.	Qty.	Description
11011	11011-7003	1	Case-Air Filter	411	411B0600	1	Washer-Plain
11013	11013-7009	1	Element-Air Filter	461	461F0800	4	Washer-Spring
11013A	11013-7010	1	Element-Air Filter				
11029	11029-7002	1	Element-Assy-Air Filter				
11051	11051-7002-9H	1	Bracket				
11060	11060-7016	2	Gasket, Muffler				
13271	13271-7008-9X	1	Plate				
13271A	13271-7009-9X	1	Plate				
16060	16060-7001	1	Pipe-Intake				
18049	18049-7003	1	Pipe-Exhaust				
42036	42036-7002	1	Sleeve				
49070	49070-7004	1	Muffler-Comp				
92015	92015-1193	2	Nut				
92037	92037-2079	2	Clamp				
92072	92072-7005	1	Band				
92171	92171-7002	1	Clamp				
92191	92191-7006	1	Tube				
92210	92210-7004	2	Nut				
92210A	92210-7008	2	Nut				
130	130B06105	2	Bolt-Flanged				
130A	130B0816	3	Bolt-Flanged				
172	172G0690	2	Bolt-Stud				
233	233B0416	1	Screw-Pan-WP				
311	311B0400	1	Nut-Hex				
317	317R0800	4	Nut-Hex-Small				



Starter/Decals – Kawasaki FH601V-S07

Ref. No.	Part No.	Qty.	Description
13101	13101-7001	1	Gear-Assy
21039	21039-7001	1	Brush
21080	21080-7001	1	Armature
21163	21163-7001	1	Starter-Electric
39184	39184-7001	1	Bracket-Assy
92151	92151-7013	1	Bolt
130	130B0816	1	Bolt-Flanged
56033	56033-7001	1	Decal-Manual
56080	56080-7006	1	Decal-Brand

Ref. No.	Part No.	Qty.	Description

