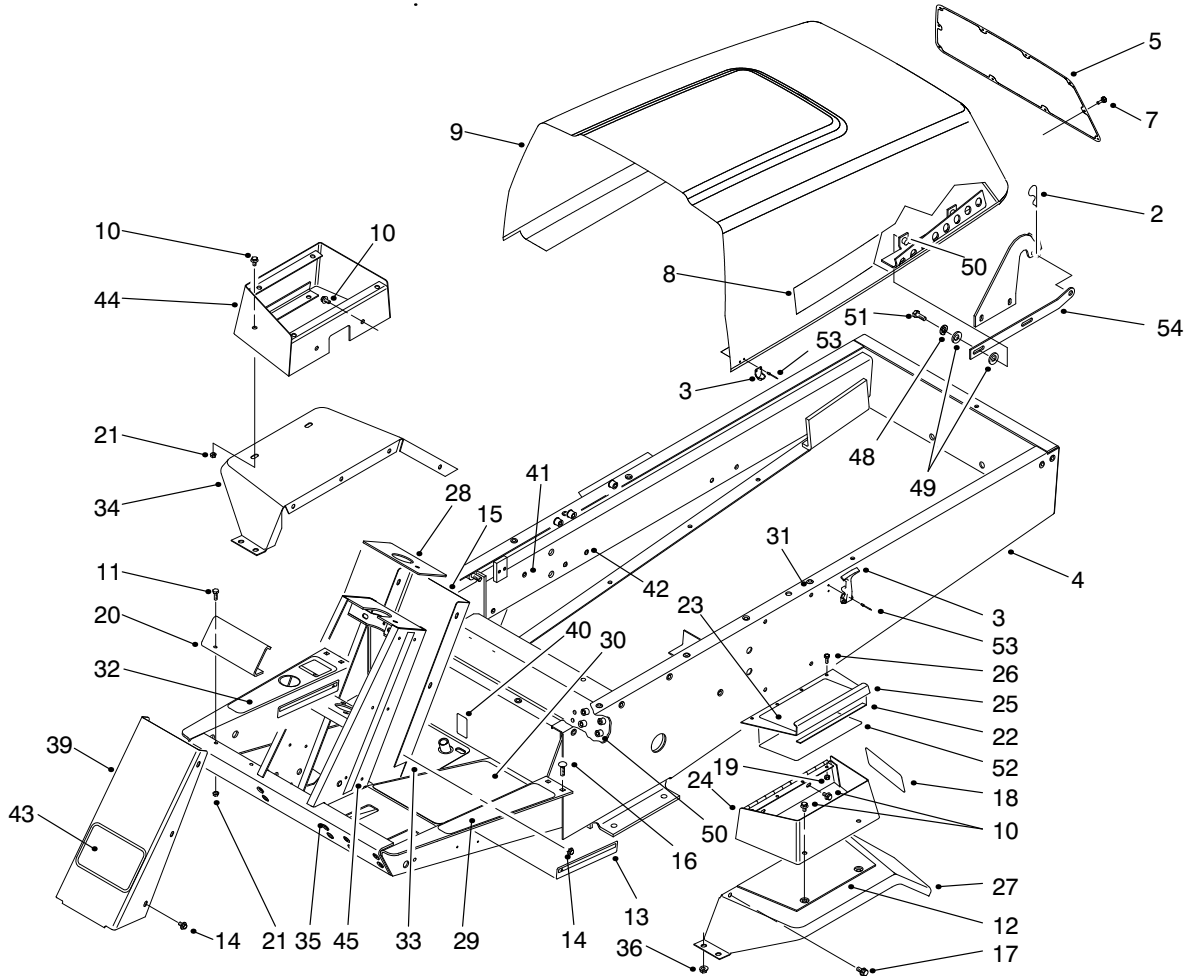




MODEL NO. 30200-90001 & UP

PARTS  
CATALOG

**GROUNDMASTER® 1000L  
TRACTION UNIT**

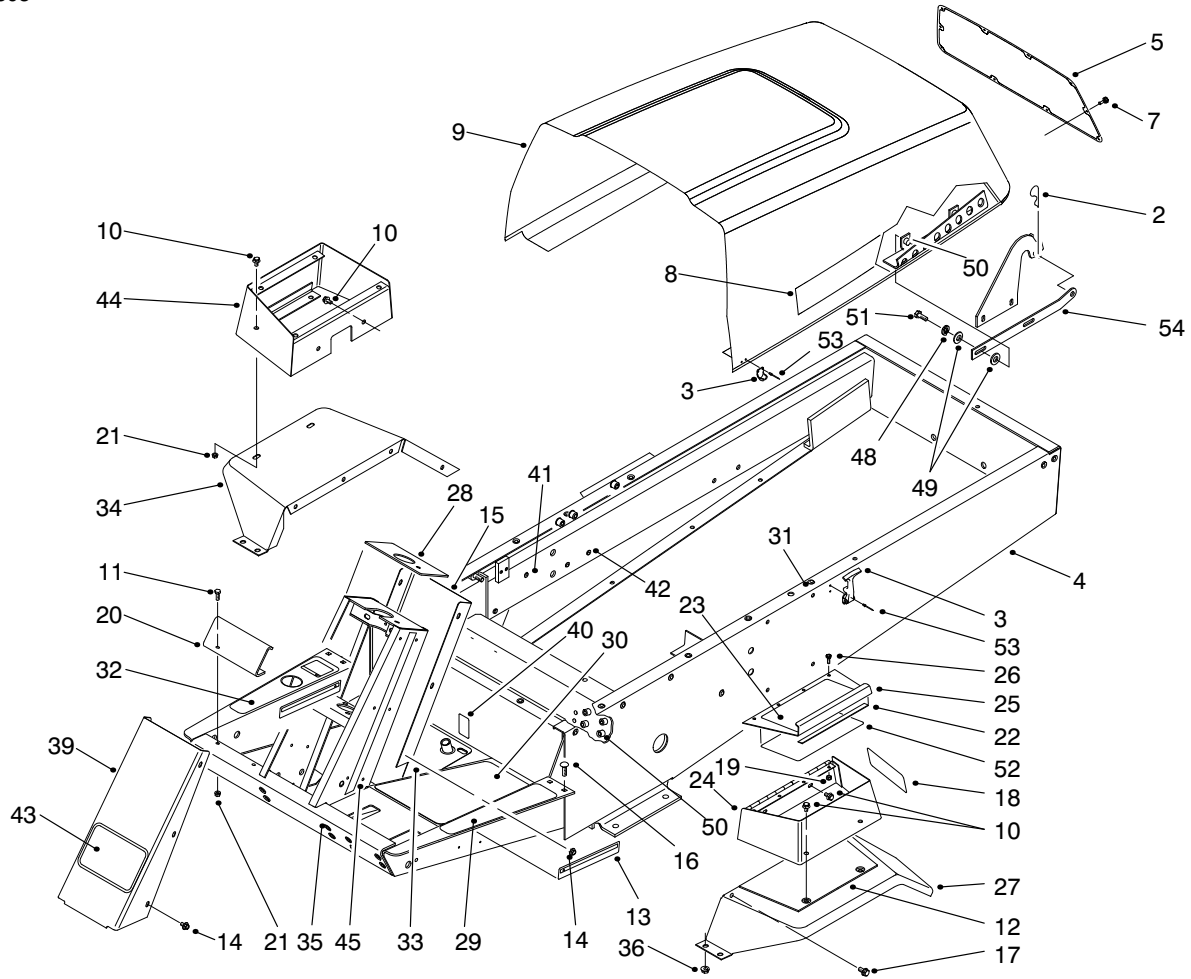


T-2673

**BODY ASSEMBLY**

Ref. No.	Part No.	Description	No. Used
2	3290-467	Pin-Cotter, Hair	2
3	95-6339	Asm-Flexible Draw Latch	2
4	95-6280	Frame	1
5	95-3417	Screen-Hood	1
7	95-3428	Rivet-Plastic	8
8	95-6304	Decal-GM 1000L	2
9	95-6330	Asm-Hood (Incl. Ref. #50)	1
10	3234-13	Screw-HHF	8
11	321-4	Screw-HH	2
12	76-4790	Pad-Rubber, Tool Box	1
13	67-1720	Decal-Torque	2
14	46-6810	Screw-HWH	13
15	63-7320	Cover-Tower, Rear	1
16	3230-23	Bolt-Carriage	4
17	3234-14	Screw-HFH	8
18	27-7310	Decal-Refueling	1

Ref. No.	Part No.	Description	No. Used
19	3296-12	Nut-Lock	4
20	92-5548	Shield-Stop, Pedal	1
21	32128-33	Nut-HF	10
22	66-3050	Strip-Magnetic	1
23	92-8798	Decal-Caution	1
24	92-6501	Tool Box	1
25	66-3040	Cover-Tool Box	1
26	3290-359	Screw-Round Head	4
27	63-7310	Fender-LH	1
28	66-2470	Panel-Tower	1
29	66-3200	Tread-Footrest, LH	1
30	66-3210	Tread-Footrest, RH	1
31	32148-7	Nut-Clinch	18
32	92-5772	Decal-Footrest, RH	1
33	92-5540	Tread-Footrest, RH	1
34	63-7300	Fender-RH	1



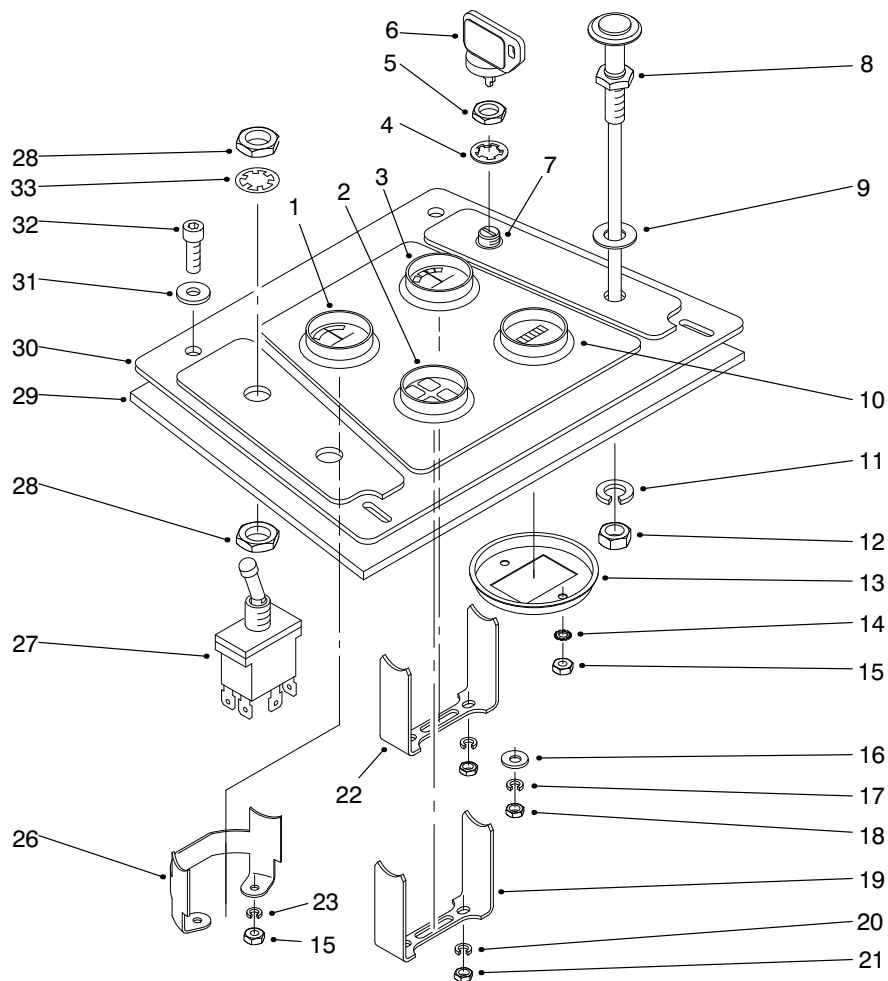
T-2673

## BODY ASSEMBLY (Continued)

Ref. No.	Part No.	Description	No. Used
35	32148-10	Nut-Clinch	14
36	32128-20	Nut-Lock	4
39	92-5545	Cover-Tower, Front	1
40	53-4430	Decal-Oil Fill	1
41	32148-9	Insert-Threaded	3
42	32148-11	Nut-Clinch	2
43	62-5550	Decal-Toro	1
44	63-8050	Box-Control	1
45	66-8760	Decal-Tower, Left	1

Ref. No.	Part No.	Description	No. Used
*	66-8770	Decal-Tower, Right	1
48	3253-4	Washer-Lock	4
49	3256-24	Washer-Flat	4
50	32148-8	Nut-Clinch	12
51	322-6	Screw-HH	4
52	95-6320	Decal - Service	1
53	3269-4	Rivet	8
54	95-6281	Bracket-Hinge	2

\*Not Illustrated

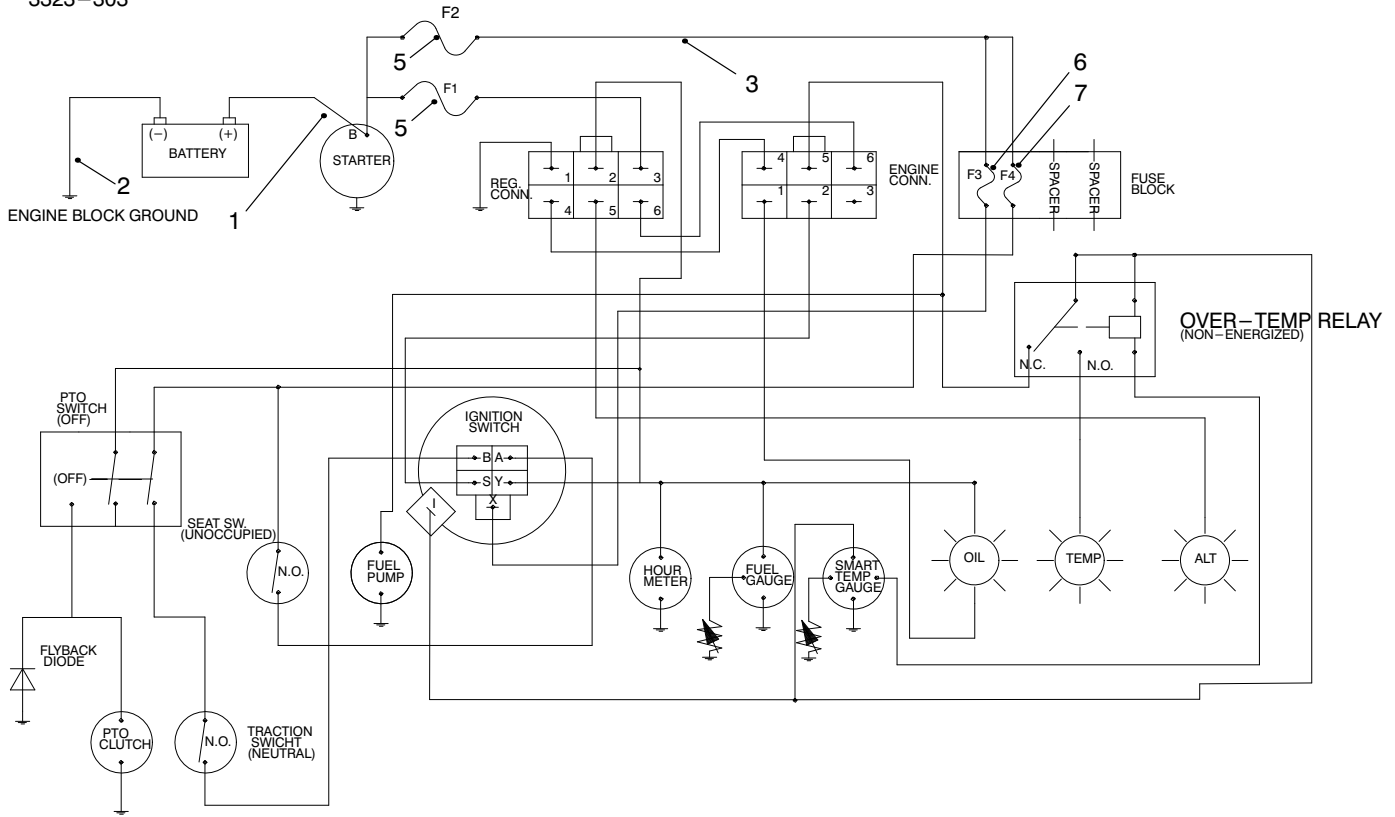


T-2635

## CONTROL PANEL ASSEMBLY

Ref. No.	Part No.	Description	No. Used	Ref. No.	Part No.	Description	No. Used
1	99-8421	Gauge-Temperature (Incl. Ref. #15, 23 & 26)	1	16	3256-14	Washer	2
2	92-9775	Cluster-Warning Lights (Incl. Ref. #19-21 & 35-36)	1	17	3253-2	Washer-Lock	5
3	66-2940	Gauge-Fuel (Incl. Ref. #16-18 & 22)	1	18	3219-14	Nut-Jam	6
4	218-447	Washer-Lock	1	19		Clamp	1
5	218-446	Nut-Hex.	1	20	3254-1	Washer-Lock	2
6	63-8360	Key-Ignition	1	21	3217-26	Nut-Jam	2
7	27-2360	Switch-Ignition (Incl. Ref. #4-5)	1	22		Clamp	1
8	95-2547	Control-Choke	1	23	3253-15	Washer-Lock	2
9	3256-24	Washer-Flat	1	26		Clamp	1
10	66-2950	Gauge-Hourmeter (Incl. Ref. #13-15)	1	27	85-4980	Switch (Incl. Ref. #28 & 33)	1
11	3253-21	Washer-Lock	1	28	3218-19	Nut-Jam	2
12	3220-3	Washer-Jam	1	29	85-7560	Panel-Control, Steel	1
13		Clamp	1	30	95-3009	Panel-Control, Plastic	1
14	3255-20	Washer-Lock, Ext. Tooth	2	31	3256-1	Washer-Flat	4
15	3217-25	Nut-Jam	4	32	3274-65	Screw-Socket Hd.	4
				33	3254-20	Washer-Lock, Int. Tooth	1
				*35	87-6270	Socket-Bulb	4
				*36	219-17	Bulb	4

\*Not Illustrated



IGNITION SWITCH CIRCUITRY

POSITION	CIRCUIT	"MAKE"
1. OPEN	NONE	
2. RUN	B + 1 + A	X + Y
3. START	B + 1 + S	

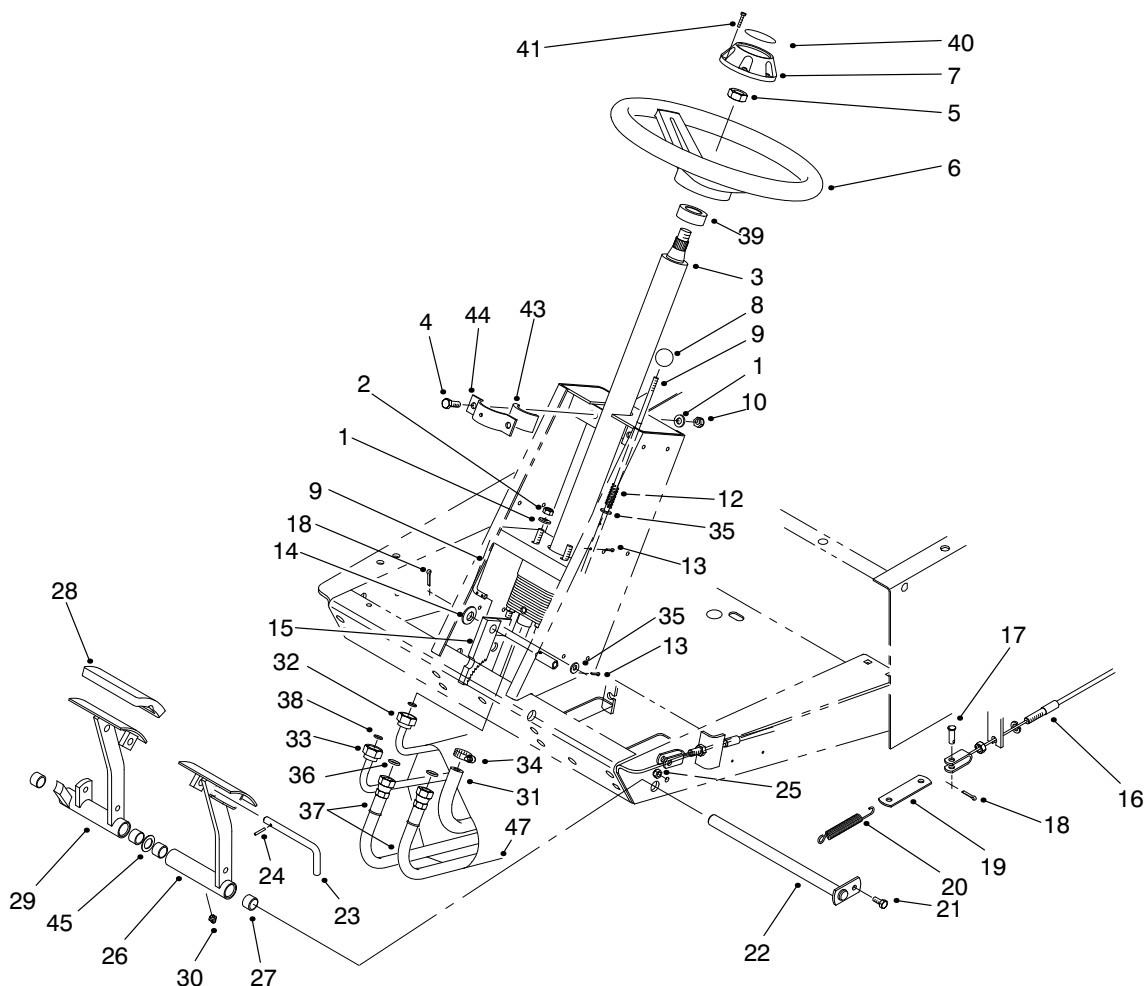
T-2736

# ELECTRICAL SCHEMATIC

Ref. No.	Part No.	Description	No. Used
1	95-3445	Cable-Positive	1
2	95-3446	Cable-Ground	1
3	95-2544	Wire Harness-Main (Incl. Ref. #)	1

Ref. No.	Part No.	Description	No. Used
* 4	3290-378	Tie Cable	7
5	100-5012	Link-Fusible	2
6	218-581	Fuse 10 Amp	1
7	218-593	Fuse 15 Amp	1

\* Not Illustrated



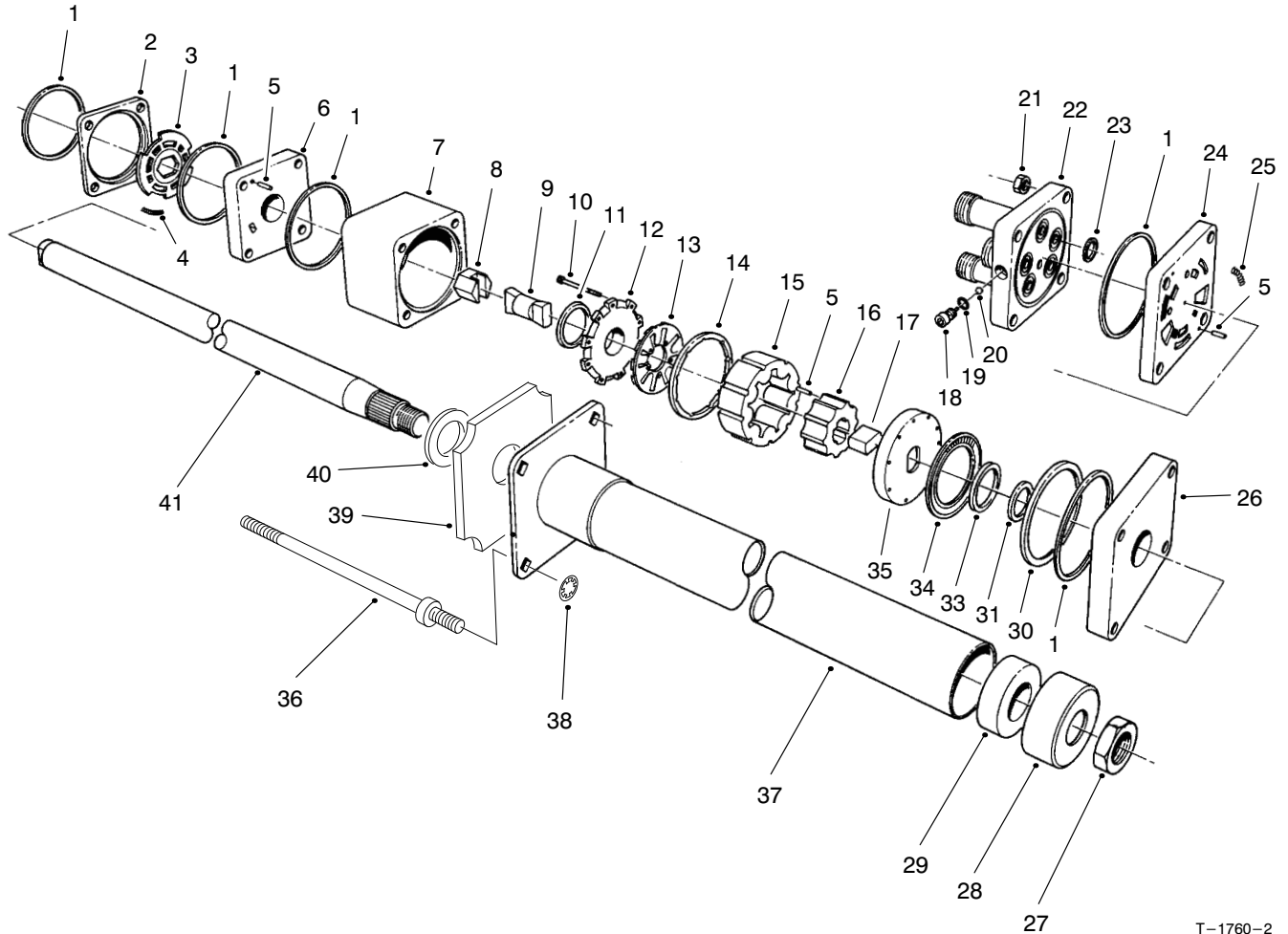
T-1247-3

## POWER STEERING & BRAKE PEDAL ASSEMBLY

Ref. No.	Part No.	Description	No. Used	Ref. No.	Part No.	Description	No. Used
1	3256-23	Washer-Flat	6	24	32121-50	Pin-Roll	1
2	3296-20	Nut-Lock	4	25	3296-42	Nut-Lock	1
3	92-7308	Asm-Valve, Power Steering (Incl. Ref. #5)	1	26	63-6180	Asm-Brake Pedal LH (Incl. Ref. #27 & 30)	1
4	322-5	Screw-HH	2	27	256-42	Bushing	4
5	3220-6	Nut-Hex.	1	28	7-3900	Foot Pad-Brake	2
6	75-0560	Asm-Steering Wheel (Incl. Ref. #7 & 41)	1	29	63-6190	Asm-Brake Pedal RH (Incl. Ref. #27 & 30)	1
7	68-5140	Asm-Cap, Steering Wheel (Incl. Ref. #41)	1	30	302-5	Fitting-Grease	2
8	233-17	Knob	1	31	66-8140	Hose	1
9	63-7910	Rod-Brake Latch	1	32	66-8630	Tube-Hydraulic (Steering & Lift)	1
10	3296-29	Nut-Lock	2	33	66-8620	Tube-Hydraulic (Pump & Steering)	1
12	95-1821	Spring	1	34	2412-36	Clamp	2
13	3272-5	Pin-Cotter	6	35	3256-22	Washer-Flat	2
14	3256-26	Washer-Flat	1	36	237-30	O-Ring	2
15	63-7900	Rack-Brake	1	37	66-8170	Hose-Hydraulic	2
16	63-7730	Cable-Brake RH	1	38	237-22	O-Ring	2
*	63-7731	Cable-Brake LH	1	39	21-9260	Cover-Dust	1
17	283-58	Pin-Clevis	4	40	68-5370	Decal-Toro	1
18	3272-10	Pin-Cotter	5	41	32144-21	Screw-Pan Hd. Phillips	1
19	63-6750	Link-Cable Brake	2	43	84-7670	Foam-Column Support	2
20	3-7243	Spring-Return	2	44	84-7660	Clamp-Column	1
21	321-3	Screw-HH	1	45	3256-69	Washer-Flat	AR
22	63-6210	Pin-Brake	1	47	44-8530	Sock-Hose	1
23	63-7880	Pin-Brake Latch	1				

\*Not Illustrated

3323-303



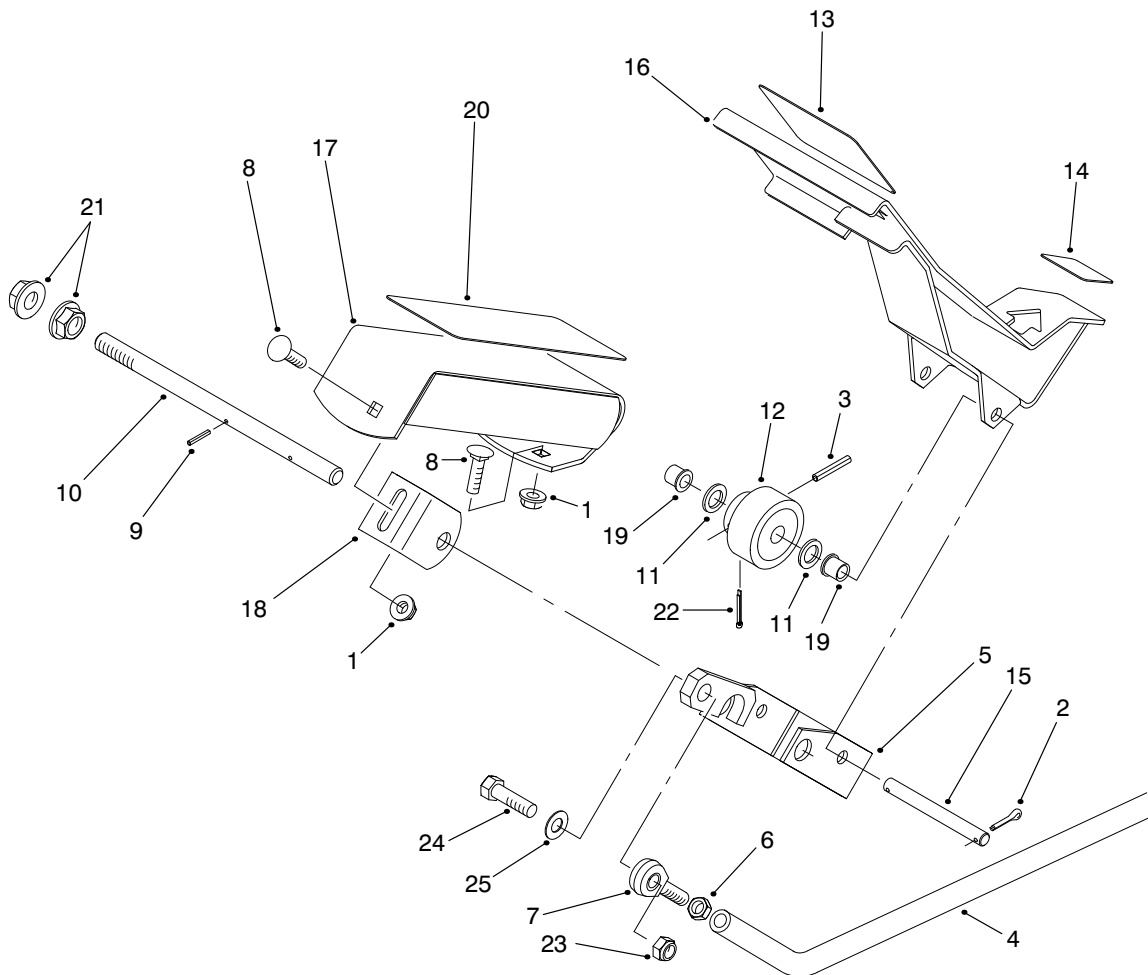
T-1760-2

## STEERING VALVE ASSEMBLY NO. 92-7308

Ref. No.	Part No.	Description	No. Used
1		Ring-Seal	5
2		Ring-Valve	11
3		Plate-Valve	1
4		Spring	3
5		Pin-Alignment	9
6		Manifold-Isolation	1
7		Ring-Metering	1
8		Asm-Hex. Drive	1
9		Link-Drive	1
10		Screw-Hex. Socket Hd.	11
11		Seal-Commutator	1
12		Cover-Commutator	1
13		Commutator	1
14		Ring-Commutator	1
15		Stator	1
16		Rotor	1
17		Spacer-Drive Link	1
18		Plug	1
19		O-Ring	1
20		Ball	1
21		Nut-Hex.	4
22		Cover-Port	1
23		O-Ring	5
24		Manifold-Port	1
25		Spring	3

Ref. No.	Part No.	Description	No. Used
26		Plate-Upper Cover	1
27	3220-6	Nut	1
28	92-7315	Seal	1
29		Bearing	1
30		Spacer-Thrust Bearing	1
31		Spacer-Seal	1
33		Seal-Face	1
34		Bearing-Thrust	1
35		Plate-Drive	1
36	92-7310	Bolt-Special	4
37		Upper Cover & Jacket	1
38	92-7316	Nut-Push On	1
39	92-7317	Foam	1
40		Washer-Retaining	1
41		Shaft-Input	1
*	66-9970	Kit-Spring (Incl. Ref. #4 & 25)	1
*	66-9980	Kit-Seal (Incl. Ref. #1, 11, 19, 23, 31 & 33)	1
*	66-9990	Kit-Needle Roller (Incl. Ref. #5)	1
*	92-7314	Asm-Column (Incl. Ref. #27-29 & 37-41)	1

\*Not Illustrated

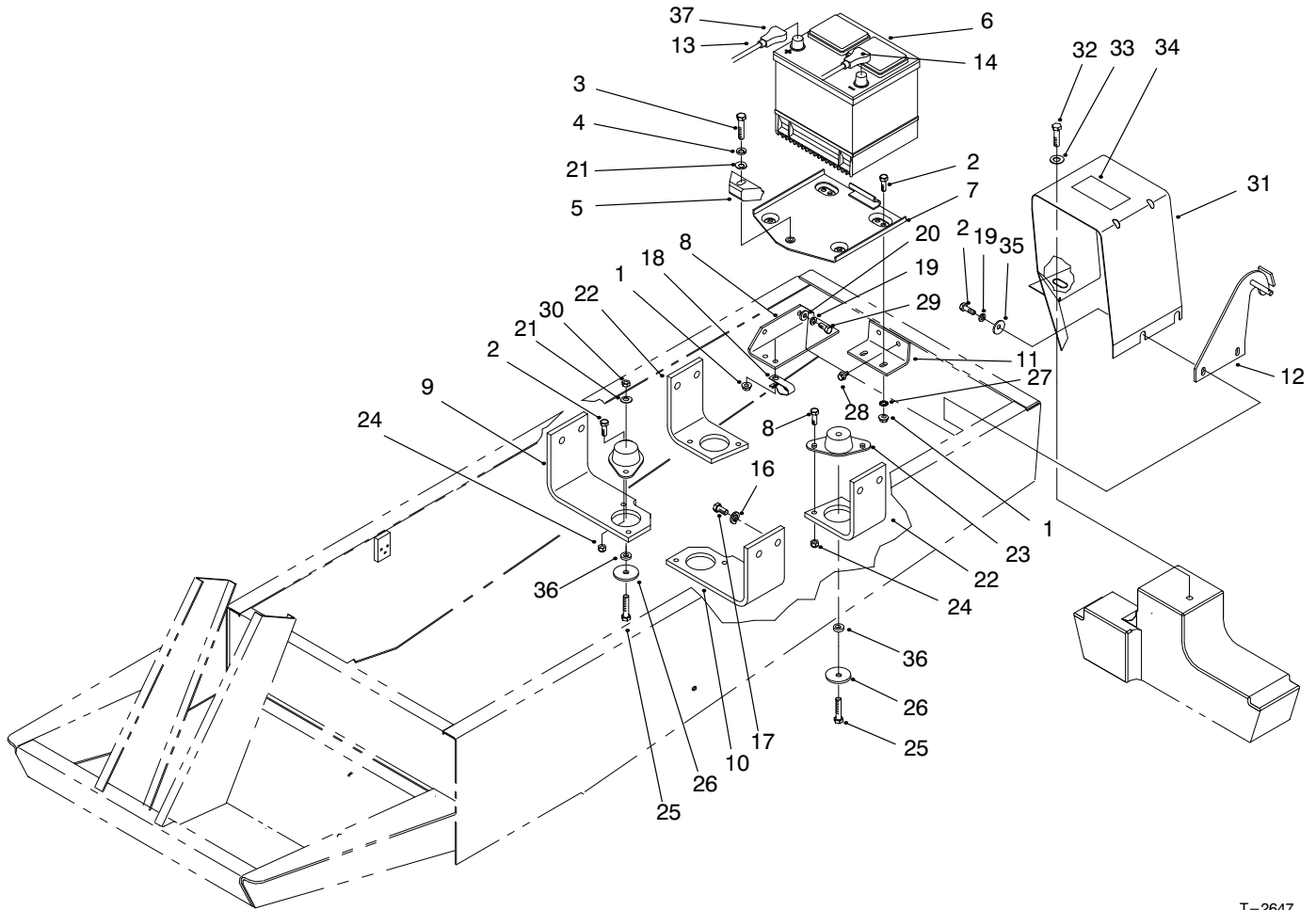


T-2636

## TRACTION PEDAL ASSEMBLY

Ref. No.	Part No.	Description	No. Used
1	32128-44	Nut-Flange Hd.	2
2	3272-10	Pin-Cotter	2
3	32121-6	Pin-Roll	1
4	63-6410	Tube-Pump Control	1
5	92-8854	Bracket-Pivot	1
6	3220-3	Nut-Hex. Jam	1
7	2411-36	Bearing-Rod End	1
8	3230-2	Bolt-Carriage	2
9	32121-50	Pin-Roll	1
10	92-5534	Pedal-Traction	1
11	5-7570	Washer-Thrust	2
12	28-5220	Wheel-Friction	1
13	94-3307	Pad-Pedal, Traction	1

Ref. No.	Part No.	Description	No. Used
14	94-3308	Pad-Pedal, Traction	1
15	92-5537	Pin-Pivot	1
16	94-3591	Support-Pedal	1
17	92-5514	Footrest	1
18	92-5077	Bracket-Footrest	1
19	256-156	Bushing-Flange	2
20	92-5750	Pad-Footrest	1
21	32128-56	Nut-Flange Hd.	2
22	3272-6	Pin-Cotter	1
23	3296-39	Nut-Lock	1
24	323-29	Screw-HH	1
25	3256-24	Washer-Flat	1



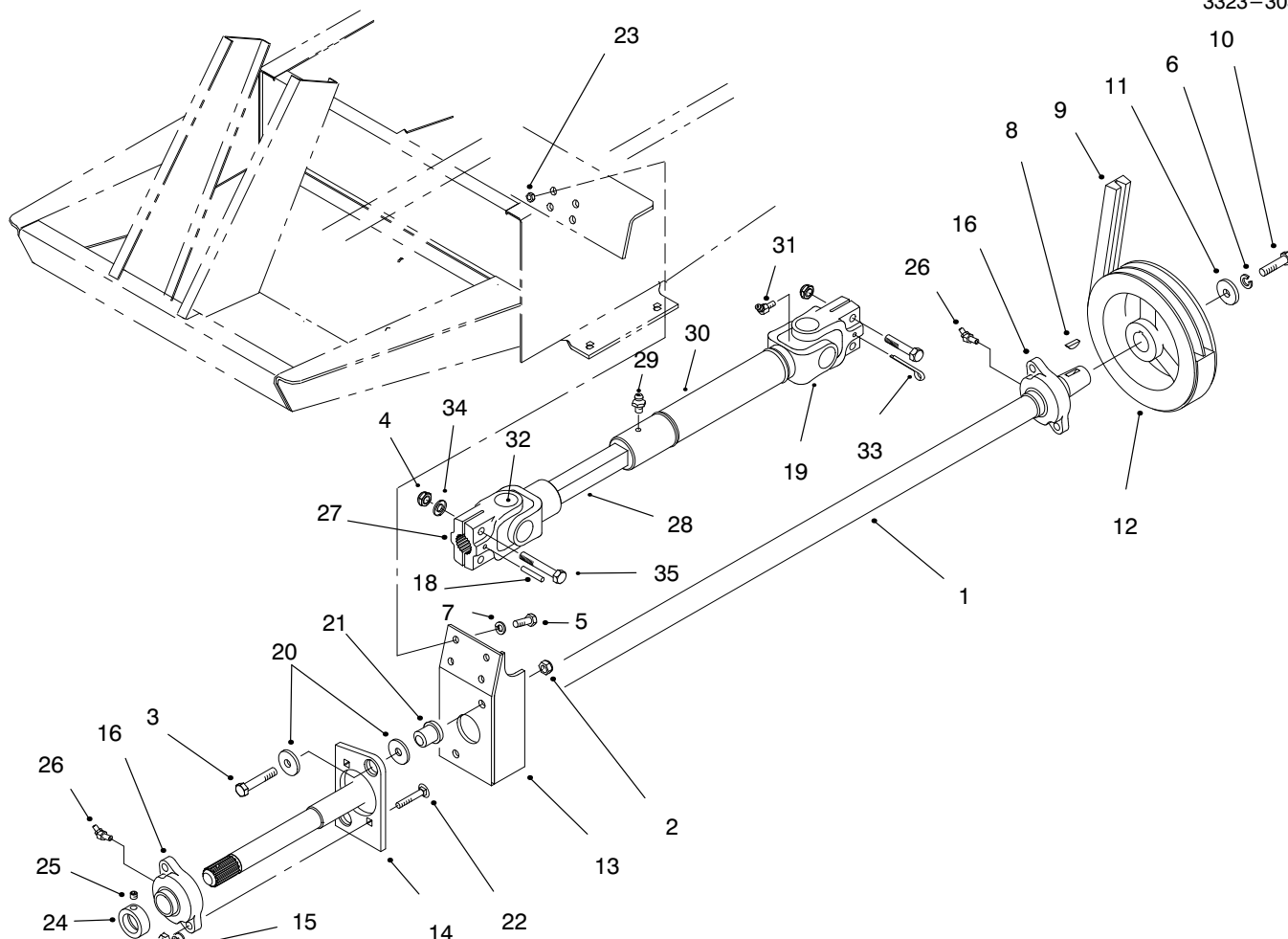
T-2647

## BATTERY & ENGINE MOUNT ASSEMBLY

Ref. No.	Part No.	Description	No. Used
1	32128-20	Nut-Lock, Flange	3
2	322-5	Screw-HH	13
3	323-9	Screw-HH	1
4	3253-21	Washer-Lock	1
5	66-2490	Retainer-Battery	1
†6		Battery-Type 26 SMF-5	1
7	94-7343	Base-Battery	1
8	95-1592	Angle-Base, Battery	1
9	95-2512	Bracket-Mount, Engine	1
10	95-2525	Bracket-Mount, Engine LH	1
11	95-2531	Bracket-Battery, Rear	1
12	95-3432	Hinge	2
13	95-3445	Cable-Battery, Positive (Incl. Ref #37)	1
14	95-3446	Cable-Battery, Negative (Incl. Ref #37)	1
16	3253-7	Washer-Lock	8
17	3213-2	Screw-HH	8
18	92-5753	Clamp-R	1

Ref. No.	Part No.	Description	No. Used
19	3253-4	Washer-Lock	4
20	3256-23	Washer-Flat	2
21	3256-24	Washer-Flat	5
22	95-2722	Bracket-Mount, Engine	2
23	83-1030	Mount-Engine	4
24	3296-29	Nut-Lock	8
25	323-12	Screw-HH	4
26	63-7400	Washer-Rebound	4
27	3255-8	Washer-Lock, Internal Tooth	2
28	3234-30	Screw-Flange	2
29	322-6	Screw-HH	2
30	3296-39	Nut-Lock	4
31	95-6336	Shield-Heat	1
32	325-3	Capscrew	1
33	3256-82	Washer-Flat	1
34	54-0910	Decal-Hot Surface	1
35	3256-82	Washer-Flat	2
36	80-7730	Spacer	4
37	28-1280	Boot-Battery	2

† Obtain Locally



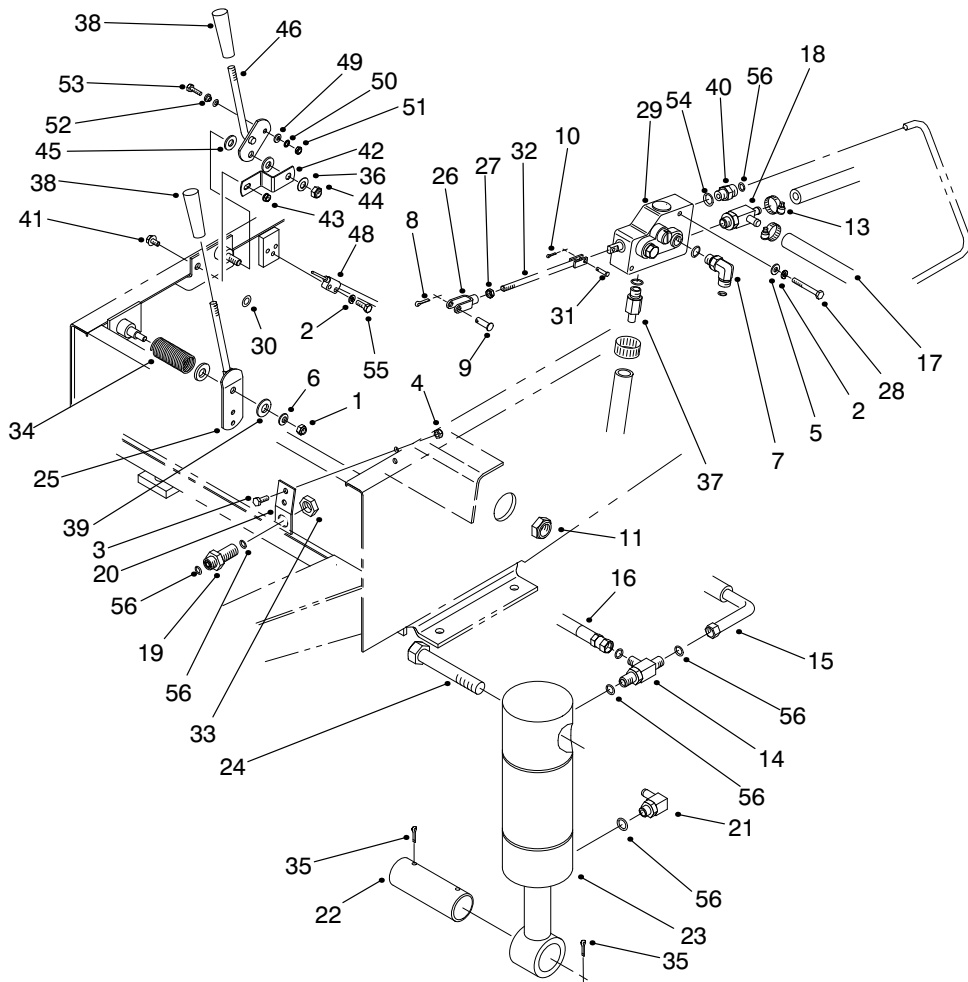
## POWER TAKE-OFF & SHAFT ASSEMBLY

T-2637

Ref. No.	Part No.	Description	No. Used
1	95-2521	Shaft--Power Take--Off	1
2	3296-39	Nut--Lock	2
3	323-10	Screw--HH	2
4	3296-29	Nut--Lock	3
5	322-5	Screw--HH	4
6	3253-21	Washer--Lock	1
7	3253-4	Washer--Lock	4
8	3257-5	Key--Woodruff	1
9	95-6316	Belt--PTO	1
10	323-18	Screw--HH	1
11	29-4730	Washer--Flat	1
12	95-6317	Pulley--PTO	1
13	92-8751	Bracket--Bearing, PTO	1
14	84-7580	Plate--Support, Bearing	1
15	32149-1	Nut--Keps	2
16	92-8799	Bearing (Incl. Ref. #24-26)	2
17	322-9	Screw--HH	2
18	32121-34	Pin--Roll	1

Ref. No.	Part No.	Description	No. Used
19	54-9090	Yoke--End	1
20	63-8410	Washer--Flat	4
21	64-9750	Mount--Rubber	2
22	3230-4	Bolt--Carriage	2
23	32148-8	Nut--Clinch	4
24	251-77	Collar--Locking	2
25	3246-1	Screw--Set	2
26	302-40	Fitting--Grease	2
27	54-9040	Yoke--End	1
28	54-9050	Shaft--Slip Yoke	1
29	302-58	Fitting--Grease	1
30	54-9170	Tube--Slip Yoke	1
31	62-3820	Fitting--Grease	2
32	54-9180	Kit--Universal Joint	1
33	3272-15	Pin--Cotter	1
34	3256-23	Washer--Flat	1
35	322-14	Screw--HH	1
*	54-7950	Shaft--Universal (Incl. Ref. #19 & 27-32)	1

\*Not Illustrated

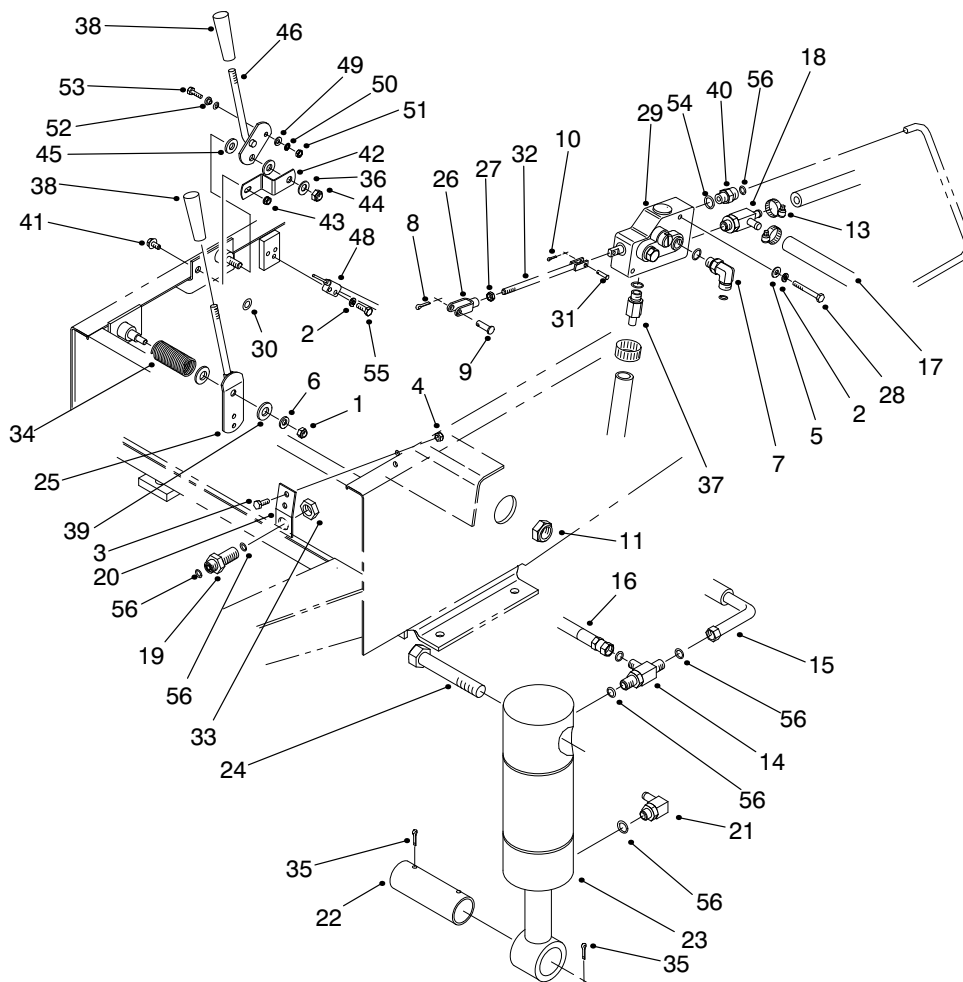


T-2638

## HYDRAULIC LIFT SYSTEM ASSEMBLY

Ref. No.	Part No.	Description	No. Used
1	3296-29	Nut-Lock	1
2	3253-3	Washer-Lock	2
3	321-4	Screw-HH	2
4	3296-42	Nut-Lock	2
5	3256-22	Washer-Flat	2
6	3256-23	Washer-Flat	1
7	340-77	Fitting-Hydraulic 90° (Incl. Ref. #54 & 56)	2
8	3272-10	Pin-Cotter	1
9	283-58	Pin-Clevis	1
10	3272-5	Pin-Cotter	1
11	3296-15	Nut-Lock	2
12	3296-12	Nut-Lock	2
13	2412-36	Clamp-Hose	3
14	340-86	Fitting-Hydraulic, Tee (Incl. Ref. #54 & 56) (Used on cap end of left cylinder)	1
15	66-8190	Hose-Hydraulic	1
16	66-8640	Hose-Hydraulic	1
17	66-8150	Hose-Hydraulic	1
18	66-3130	Fitting-Hydraulic, Special	1
19	340-71	Fitting-Bulkhead, Union (Incl. Ref. #33 & 56)	1
20	63-7410	Bracket-Bulkhead	1
21	304-99	Fitting-Barbed	2
22	27-4240	Pin-Cylinder	2

Ref. No.	Part No.	Description	No. Used
23	63-6630	Cylinder-Lift	2
24	3216-3	Screw-HH	2
25	66-2720	Lever-Valve	1
26	282-27	Pin-Clevis	1
27	3220-2	Nut-Hex.	1
28	321-11	Screw-HH	2
29	63-7960	Valve-Lift	1
30	32148-11	Nut-Clinch	2
31	283-16	Pin-Clevis	1
32	76-4830	Rod	1
33	340-70	Nut-Lock, Bulkhead	1
34	70-7530	Spring-Compression	1
35	3272-23	Pin-Cotter	4
36	3256-24	Washer-Flat	1
37	353-979	Fitting-Hydraulic, Barbed	1
38	233-39	Knob-Lever	2
39	3256-26	Washer-Flat	2
40	340-2	Adapter (Incl. Ref. #54 & 56)	1
41	3234-13	Screw-Flange	1
42	66-2670	Bracket-Throttle	1
43	32128-33	Nut-Flange	1
44	3296-39	Nut-Lock	1
45	66-2920	Washer-Nylon	1
46	95-6302	Lever-Throttle	1
48	95-2546	Cable-Throttle	1



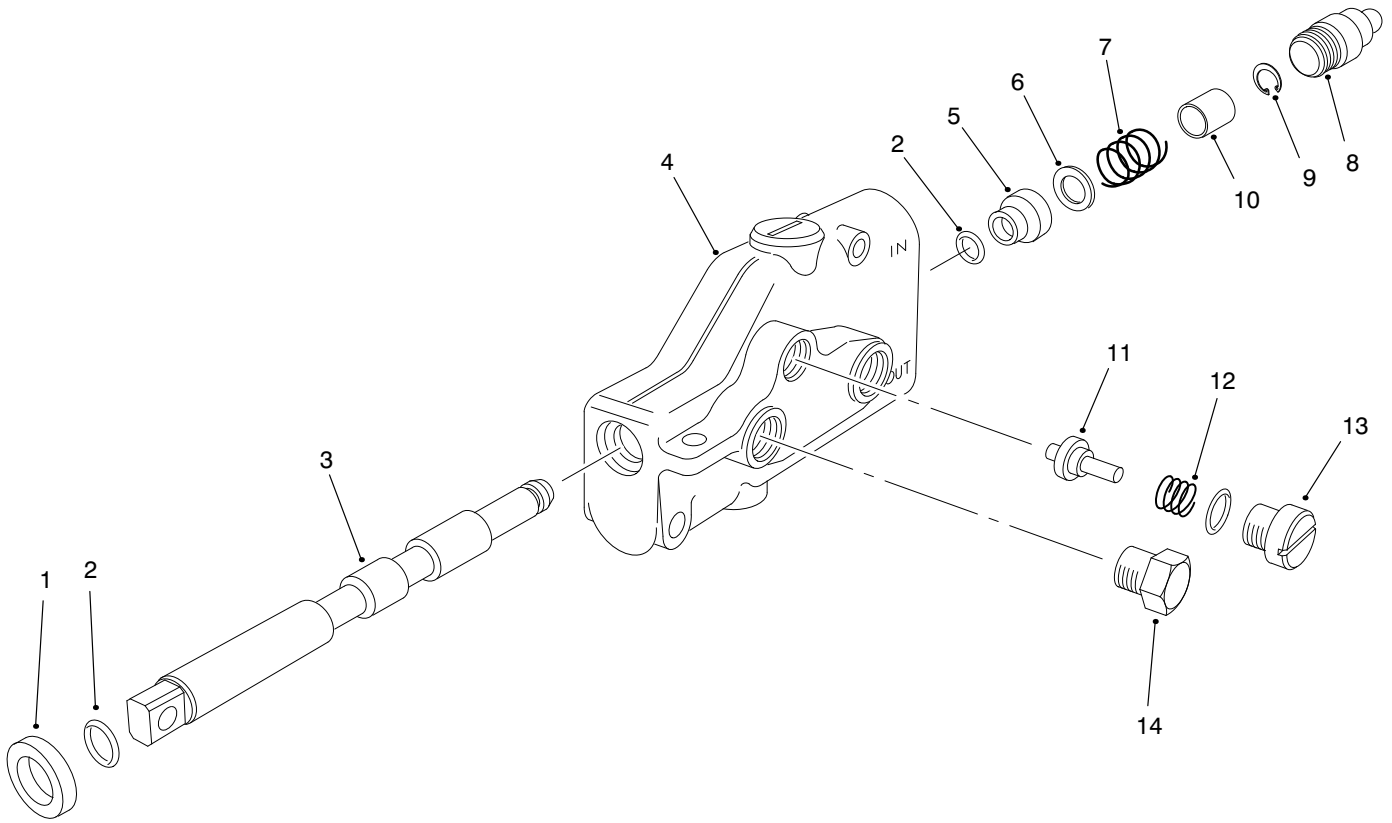
T-2638

## HYDRAULIC LIFT SYSTEM ASSEMBLY (Continued)

Ref. No.	Part No.	Description	No. Used
49		Washer-Flat	2
50		Washer-Lock, Int. Tooth	1
51		Nut-Hex.	1
52		Sleeve-Connector	1
53		Screw-Special	1

Ref. No.	Part No.	Description	No. Used
54	237-42	O-Ring	4
55	32105-8	Screw	1
56	237-22	O-Ring	8
*	63-6760	Asm-Swivel (Incl. Ref. #49-53)	1

\*Not Illustrated



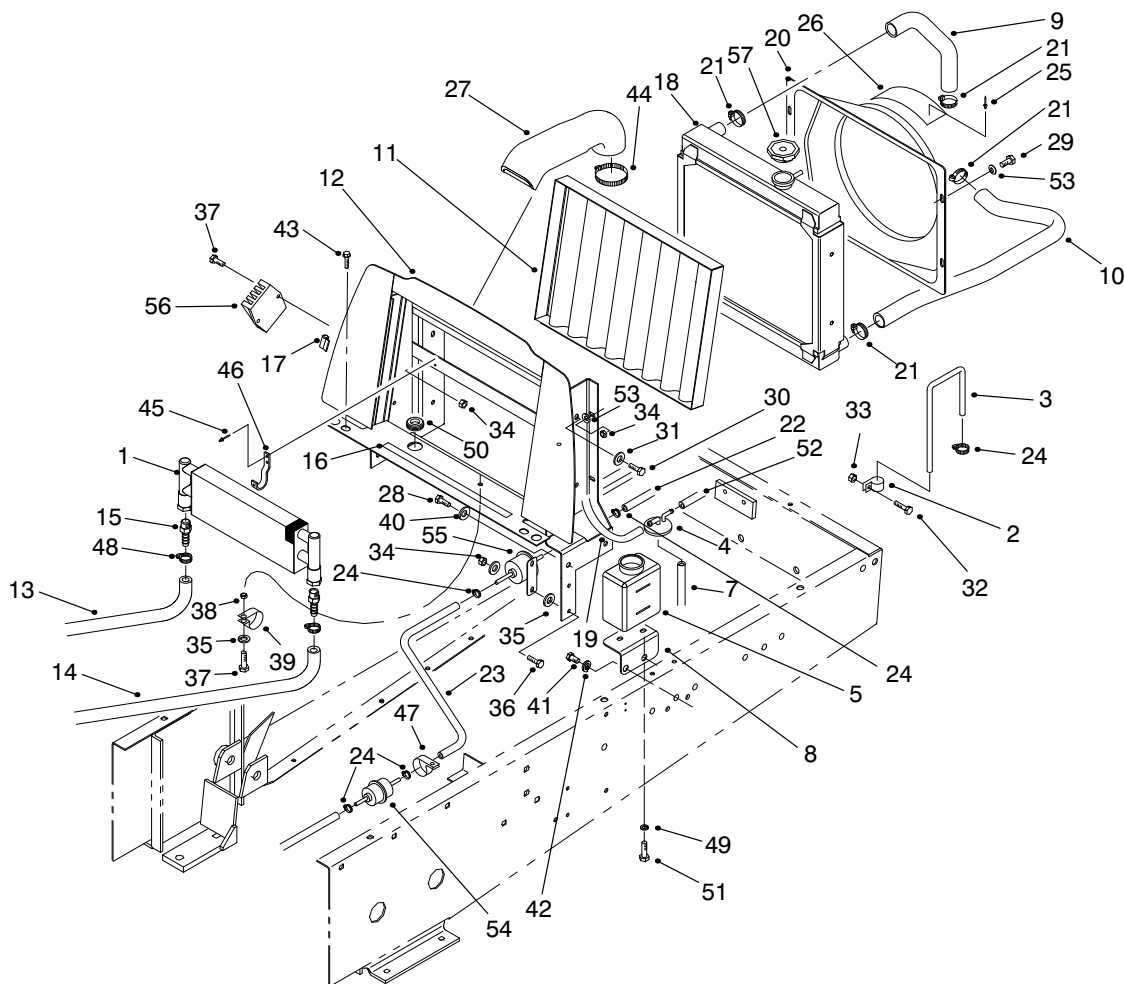
T-0532-1

## LIFT VALVE ASSEMBLY NO. 63-7960

Ref. No.	Part No.	Description	No. Used
1	58-6320	Wiper-Seal	1
2	58-6450	O-Ring	2
3		Spool	1
4		Body	1
5	58-6400	Bushing	1
6	65-2770	Washer	1
7	65-2950	Spring	1
8	58-6420	Asm-Cap	1

Ref. No.	Part No.	Description	No. Used
9	58-6460	Ring-Retaining	1
10	65-2740	Spacer	1
11	65-2750	Plunger	1
12	65-2760	Spring	1
13	65-2930	Asm-Plug	1
14	353-508	Asm-Plug	1
*	63-7960	Asm-Lift Valve (Incl. Ref. #3 & 4)	1

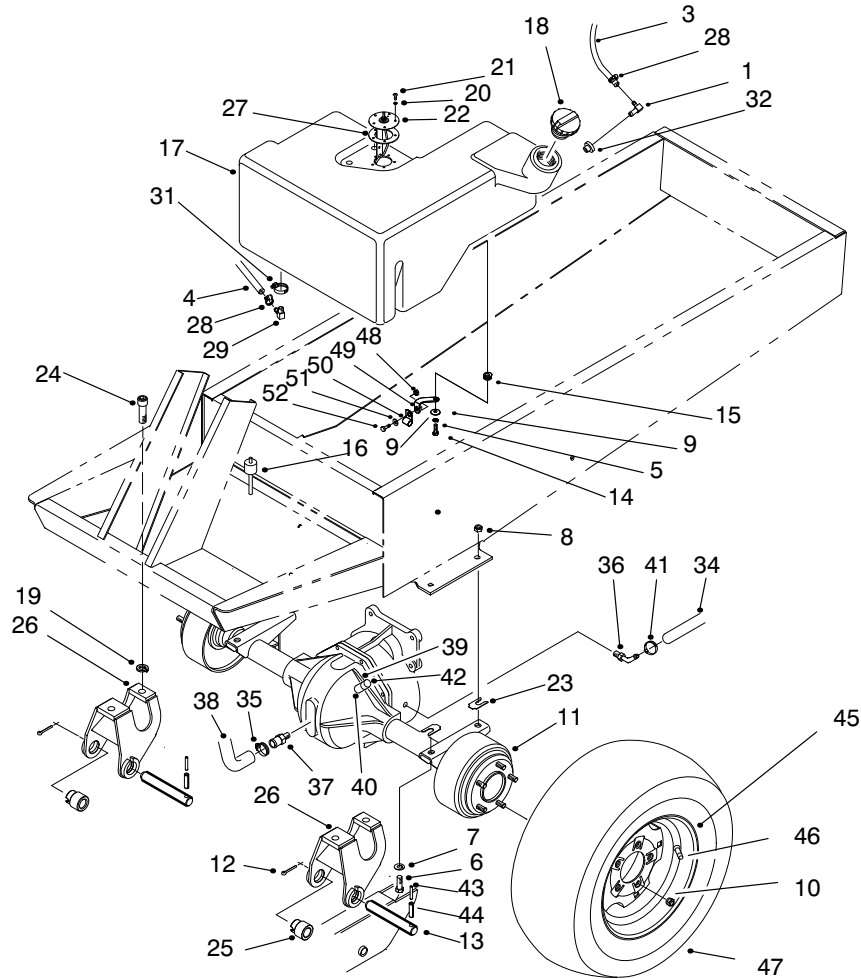
\*Not Illustrated



T-2649

## RADIATOR ASSEMBLY

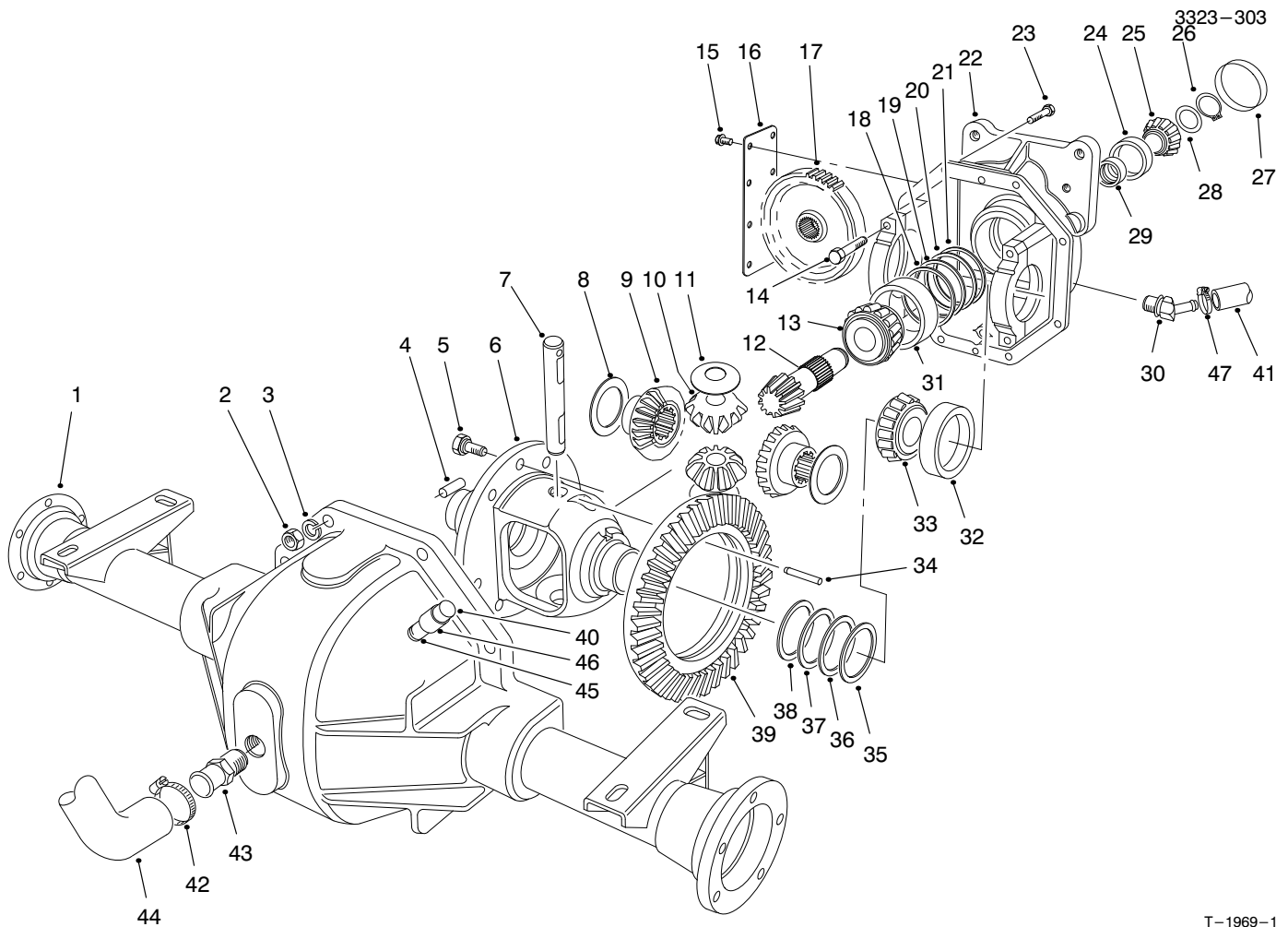
Ref. No.	Part No.	Description	No. Used	Ref. No.	Part No.	Description	No. Used
1	22-7320	Cooler-Oil	1	30	322-46	Screw-HH	4
2	2412-103	Clamp-Hose	2	31	3256-2	Washer-Flat	4
3	71-1540	Tube-Vent	1	32	3234-7	Screw	2
4	93-2048	Cap-Overflow, Vent	1	33	32128-26	Nut-HF	2
5	93-2049	Tank-Overflow	1	34	32146-17	Nut-Hex.	6
7	94-1348	Hose-Tank, Recovery	1	35	3256-1	Washer-Flat	3
8	95-2530	Bracket-Overflow	1	36	321-5	Screw-HH	1
9	95-2548	Hose-Radiator, Upper	1	37	321-6	Screw-HH	3
10	95-2549	Hose-Radiator, Lower	1	38	32128-14	Nut-Flange	1
11	95-3403	Screen-Frame	1	39	2412-126	R-Clamp	1
12	95-3412	Support-Radiator	1	40	3256-3	Washer-Flat	4
13	95-3420	Hose-Hydraulic	1	41	3213-2	Screw-HH	2
14	95-3421	Hose-Hydraulic	1	42	3253-7	Washer-Lock	2
15	95-3422	Fitting-Hydraulic	2	43	3234-29	Screw-HHF	2
16	95-3427	Strip-Magnetic	1	44	2412-130	Clamp-Hose	1
17	95-3433	Seal-Bulb	1	45	3269-17	Rivet-Pop	4
18	94-7601	Radiator (Incl. Ref. 57)	1	46	75-0930	Hook-Mount, Cooler	2
19	63-7620	Hose-Fuel	1	47	2412-104	R-Clamp	1
20	95-2529	Shroud-Fan	1	48	2412-36	Clamp-Hose	2
21	2412-34	Clamp-Hose	4	49	3253-4	Washer-Lock	2
22	71-3382	Hose-Tank, Expansion	1	50	237-125	Grommet	2
23	71-2690	Hose-Fuel	1	51	33114-016	Screw-HH	2
24	2412-108	Clamp-Hose	5	52	66-3170	Hose	1
25	3290-55	Rivet-Pop	2	53	3256-22	Washer-Flat	8
26	76-8750	Plate-Warning, Fan	1	54	95-9962	Filter-Fuel	1
27	95-3415	Hose-Intake	1	55	95-9960	Pump-Fuel	1
28	323-6	Screw-HH	4	56	95-9815	Regulator-Voltage	1
29	321-4	Screw-HH	4	57	93-5957	Radiator Cap	1



T-2639

## FUEL TANK & AXLE ASSEMBLY

Ref. No.	Part No.	Description	No. Used	Ref. No.	Part No.	Description	No. Used
1	94-6765	Fitting-Connector	1	26	98-2328	Bracket-Carrier	2
3	94-1349	Hose-Fuel	1	27	62-7650	Gasket	2
4	71-3384	Hose-Expansion Tank	1	28	2412-108	Clamp-Hose	2
5	3253-3	Washer-Lock	3	29	353-536	Fitting-90°	1
6	324-5	Screw-HH	4	31	2412-36	Clamp-Hose	1
7	3256-25	Washer-Flat	4	32	46-6560	Bushing	1
8	3296-48	Nut-Lock	4	34	92-5083	Hose	1
9	3256-67	Washer-Flat	3	35	2412-34	Clamp-Hose	2
10	23-7270	Nut-Wheel	10	36	92-5088	Fitting-Hydraulic 45°	1
11	86-9640	Axle	1	37	354-71	Fitting-Axle	1
12	3272-17	Pin-Cotter	2	38	77-0550	Tube-Fill, Differential	1
13	98-2348	Asm-Pin, Pivot (Incl. Ref. #43-44)	2	39	2810-1	Coupler-Pipe	1
14	321-5	Screw-HH	4	40	289-6	Nipple-Pipe	1
15	237-136	Grommet-Rubber	3	41	2412-119	Clamp-Hose	2
16	66-3060	Dipstick	1	42	72-9420	Asm-Tube, Vent	1
17	98-5002	Tank-Fuel	1	43	32121-71	Pin-Spring	2
18	93-3101	Cap-Gas	1	44	32121-49	Pin-Spring	2
19	3253-8	Washer-Lock	4	45	217-117	Asm-Wheel	2
20	3253-15	Washer-Lock	5	46	232-27	Stem-Valve	2
21	32122-24	Screw	5	47	95-3348	Tire-Tubeless	2
22	63-7640	Sender-Fuel	1	48	3296-42	Nut-Lock	1
23	42-6080	Shim-Axle	AR	49	92-2928	Bracket-Cable	1
24	3273-38	Screw-Hex. Socket Hd.	4	50	2412-104	Clamp-R	1
25	98-7926	Spacer-Lift Arm.	4	51	3256-1	Washer	1
				52	321-4	Screw	1

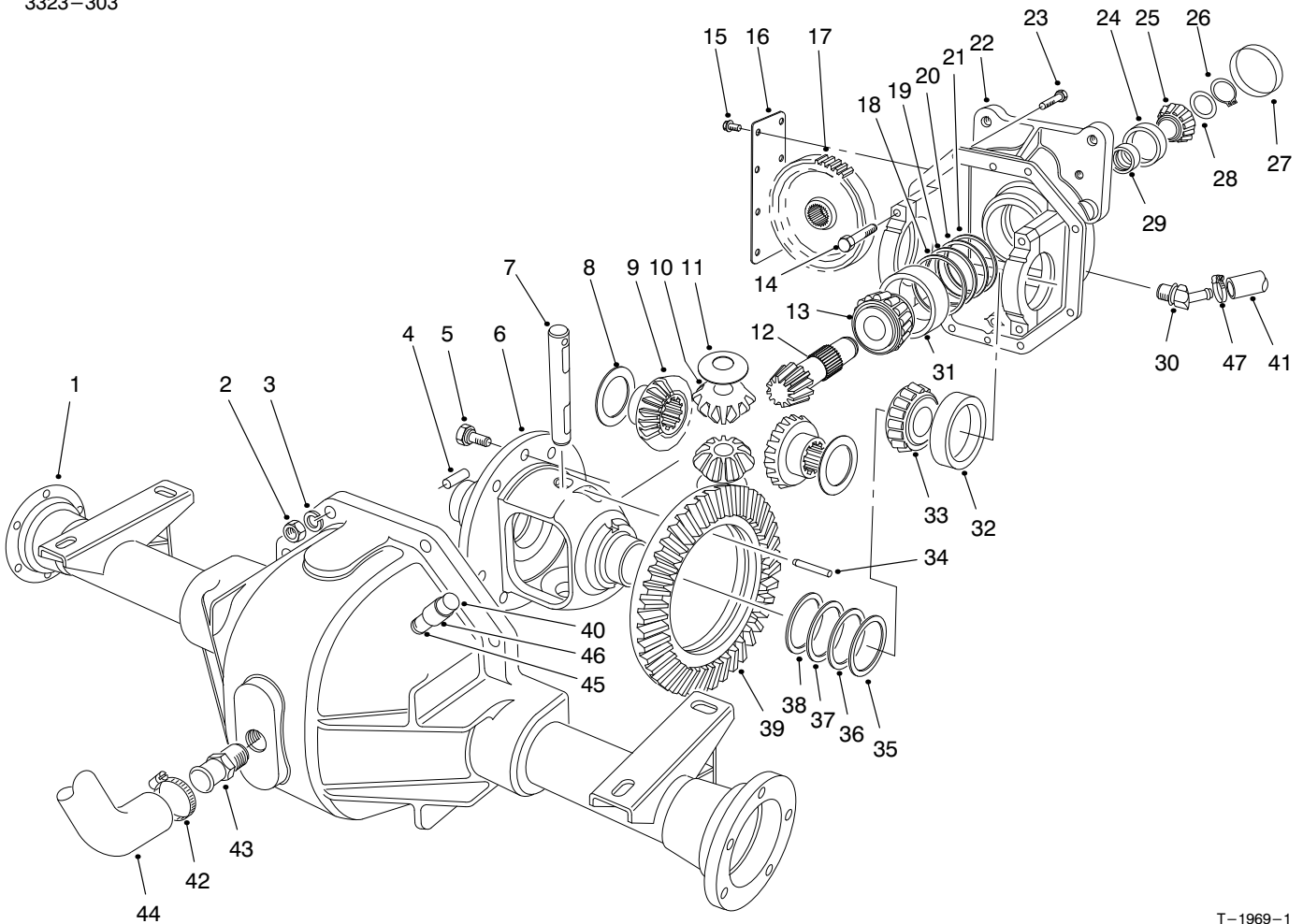


T-1969-1

## DIFFERENTIAL ASSEMBLY

Ref. No.	Part No.	Description	No. Used	Ref. No.	Part No.	Description	No. Used
1	63-8090	Asm-Lower Housing	1	24	254-90	Cup-Bearing	1
2	3219-2	Nut	8	25	254-91	Cone-Bearing	1
3	3255-8	Washer-Lock	8	26	43-6550	Ring-Retaining	1
4	21-8270	Pin-Dowel	2	27	21-7850	Cap Plug	1
5	21-7770	Screw-Drive Gear	5	28	46-2210	Shim Front Pinion Bearing	
6	21-7670	Differential Case	1			(.031)	AR
7	21-7700	Shaft-Pinion Mate	1	*	46-2211	Shim Front Pinion Bearing	
8	21-7720	Washer-Thrust	2			(.033)	AR
9	24-8790	Gear-Bevel, Differential	2	*	46-2212	Shim Front Pinion Bearing	
10	21-7690	Gear-Pinion	2			(.035)	AR
11	21-7730	Washer-Thrust	2	*	46-2213	Shim Front Pinion Bearing	
12		Drive Pinion	1			(.037)	AR
13	43-6760	Cone-Bearing, Tapered	1	*	46-2214	Shim Front Pinion Bearing	
14	92-1773	Screw-HH.	4			(.039)	AR
15	12-5450	Screw-Thread Forming	8	*	46-2215	Shim Front Pinion Bearing	
16	21-7830	Cover-Gear	1			(.041)	AR
17	86-7230	Gear-Spur	1	*	46-2216	Shim Front Pinion Bearing	
18	43-6710	Shim Adjusting Differential Bearing .003	AR			(.043)	AR
19	43-6711	Shim Adjusting Differential Bearing .005	AR	*	46-2220	Shim Front Pinion Bearing	
20	43-6712	Shim Adjusting Differential Bearing .010	AR			(.045)	AR
21	43-6713	Shim Adjusting Differential Bearing .030	AR	*	46-2221	Shim Front Pinion Bearing	
22	86-7930	Asm-Upper Housing (Incl. Ref. #14)	1			(.047)	AR
23	3210-7	Screw-HH	8	*	46-2222	Shim Front Pinion Bearing	
						(.049)	AR
				*	46-2223	Shim Front Pinion Bearing	
						(.051)	AR
				*	46-2224	Shim Front Pinion Bearing	
						(.053)	AR

\*Not Illustrated



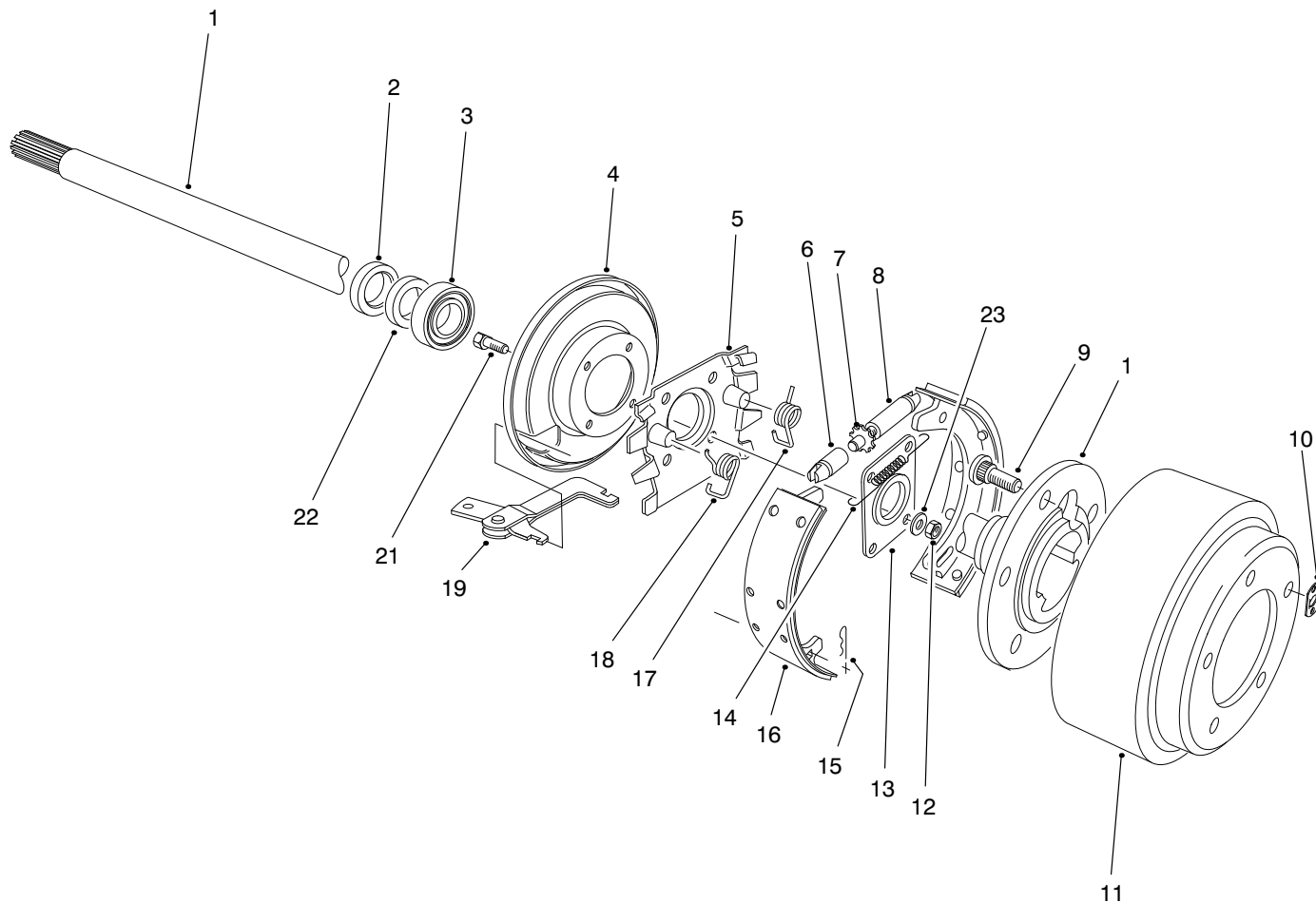
T-1969-1

## DIFFERENTIAL ASSEMBLY (Continued)

Ref. No.	Part No.	Description	No. Used
*28	46-2225	Shim Front Pinion Bearing (.055)	AR
*	46-2226	Shim Front Pinion Bearing (.057)	AR
*	46-2410	Shim Front Pinion Bearing (.062)	AR
	46-2411	Shim Front Pinion Bearing (.064)	AR
*	46-2412	Shim Front Pinion Bearing (.066)	AR
*	46-2413	Shim Front Pinion Bearing (.068)R	AR
*	46-2414	Shim Front Pinion Bearing (.070)	A/R
*	46-2415	Shim Front Pinion Bearing (.072)	AR
*	46-2416	Shim Front Pinion Bearing (.074)	AR
*	46-2420	Shim Front Pinion Bearing (.076)	AR
	46-2421	Shim Front Pinion Bearing (.078)	AR
*	46-2422	Shim Front Pinion Bearing (.080)	AR
*	46-2423	Shim Front Pinion Bearing (.082)	AR
*	46-2424	Shim Front Pinion Bearing (.084)	AR

Ref. No.	Part No.	Description	No. Used
*28	46-2425	Shim Front Pinion Bearing (.086)	AR
*	46-2426	Shim Front Pinion Bearing (.088)	AR
29	21-8020	Spacer-Frt. Pinion Bearing	1
30	92-5088	Fitting-45°	1
31	43-6750	Cup-Tapered, Bearing	1
32	254-66	Cup-Tapered, Bearing	2
33	254-65	Cone-Tapered, Bearing	2
34	32121-15	Pin-Roll	1
35	21-8090	Diff. Adjust. Shim. .003	AR
36	21-8100	Diff. Adjust. Shim. .005	AR
37	21-8110	Diff. Adjust. Shim. .010	AR
38	21-8120	Diff. Adjust. Shim. .030	AR
39		Gear-Ring	1
40	72-9420	Asm-Vent	1
41	92-5083	Hose-Hydraulic	1
42	2412-34	Clamp-Hose	2
43	354-71	Nipple-Pipe	1
44	77-0550	Tube-Fill	1
45	289-6	Nipple-Pipe	1
46	2810-1	Coupler	1
*	92-4848	Asm-Gear & Pinion (Incl. Ref. #12 & 39)	1
47	2412-119	Clamp-Hose	1
*	92-4909	Asm-Differential Carrier (Incl. Ref. #5-22, 24-29 & 31-39)	1

\*Not Illustrated

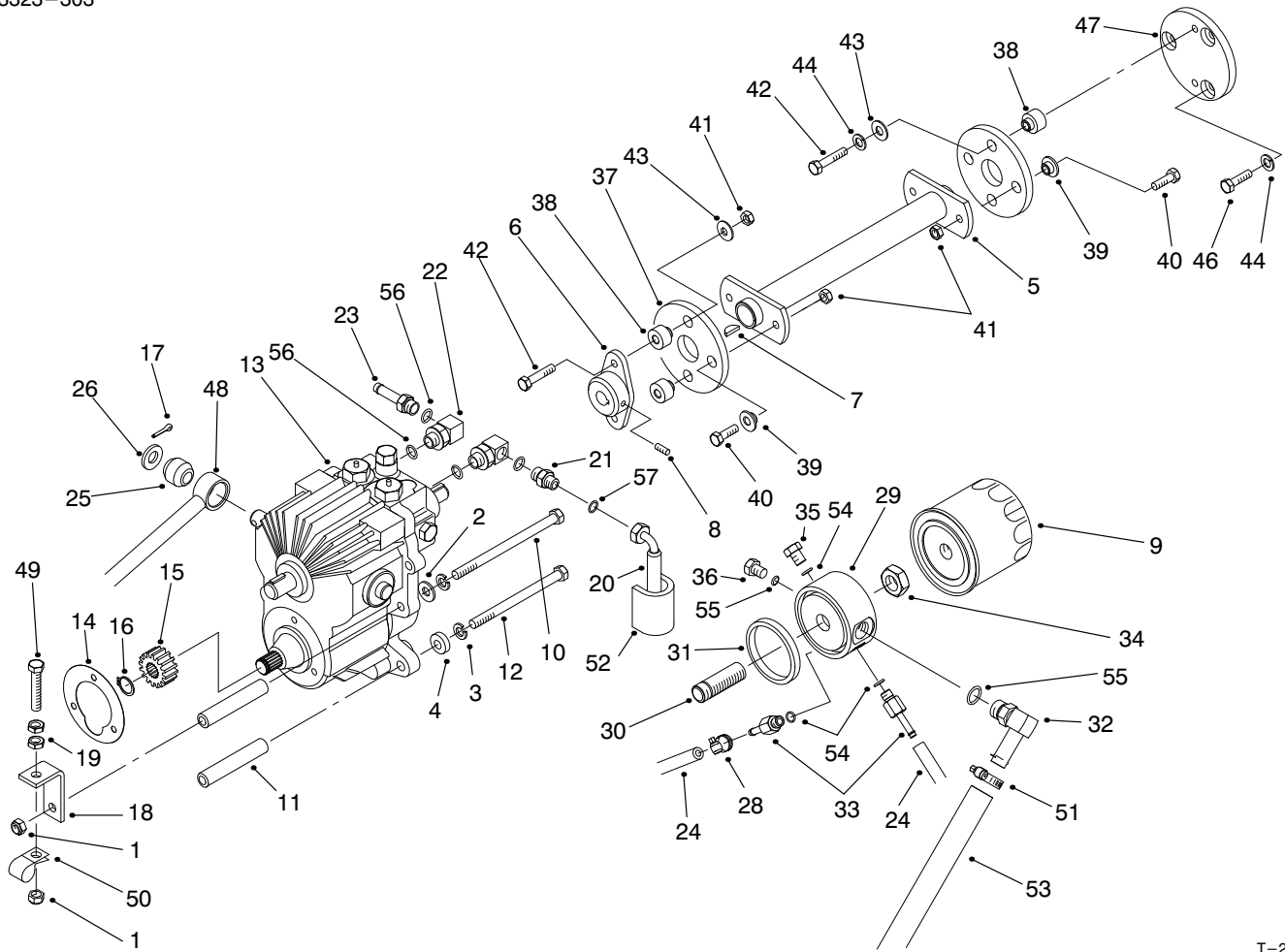


## BRAKE ASSEMBLY

Ref. No.	Part No.	Description	No. Used
1	27-6861	Shaft-Flanged Axle L.H.	1
*	27-6851	Shaft-Flanged Axle R.H.	1
2	92-1774	Oil Seal	2
3	21-8180	Bearing-Tapered Roller	2
4	21-9450	Dust Shield	2
5	43-6810	Torque Spider	2
6	21-9390	Socket-Adjusting Screw	2
7	21-9370	Adjusting Screw	2
8	21-9380	Nut-Pivot	2
9	242-34	Stud-Axle Flange	10
10	21-8360	Clip-Retaining	2
11	28-0680	Brake Drum	2
12	94-6935	Nut-Lock, Flange Hd.	8

Ref. No.	Part No.	Description	No. Used
13	28-0670	Oil Seal	2
14	21-9440	Screw-Spring Adjusting	2
15	21-9460	Retainer-Parking Brake	4
16	84-8600	Brake Shoe Set (Incl. 4 Shoes)	1
17	21-9420	Spring-Shoe Return L.H.	2
18	21-9430	Spring-Shoe Return R.H.	2
19	24-9180	Strut/Lever-Parking Brake	2
20	94-6934	Screw-HH	8
21	24-8840	Ring-Wheel Bearing	2
22	94-6936	Washer-Flat	8
*	92-8775	Kit-Liquid, Gasket	1

\*Not Illustrated

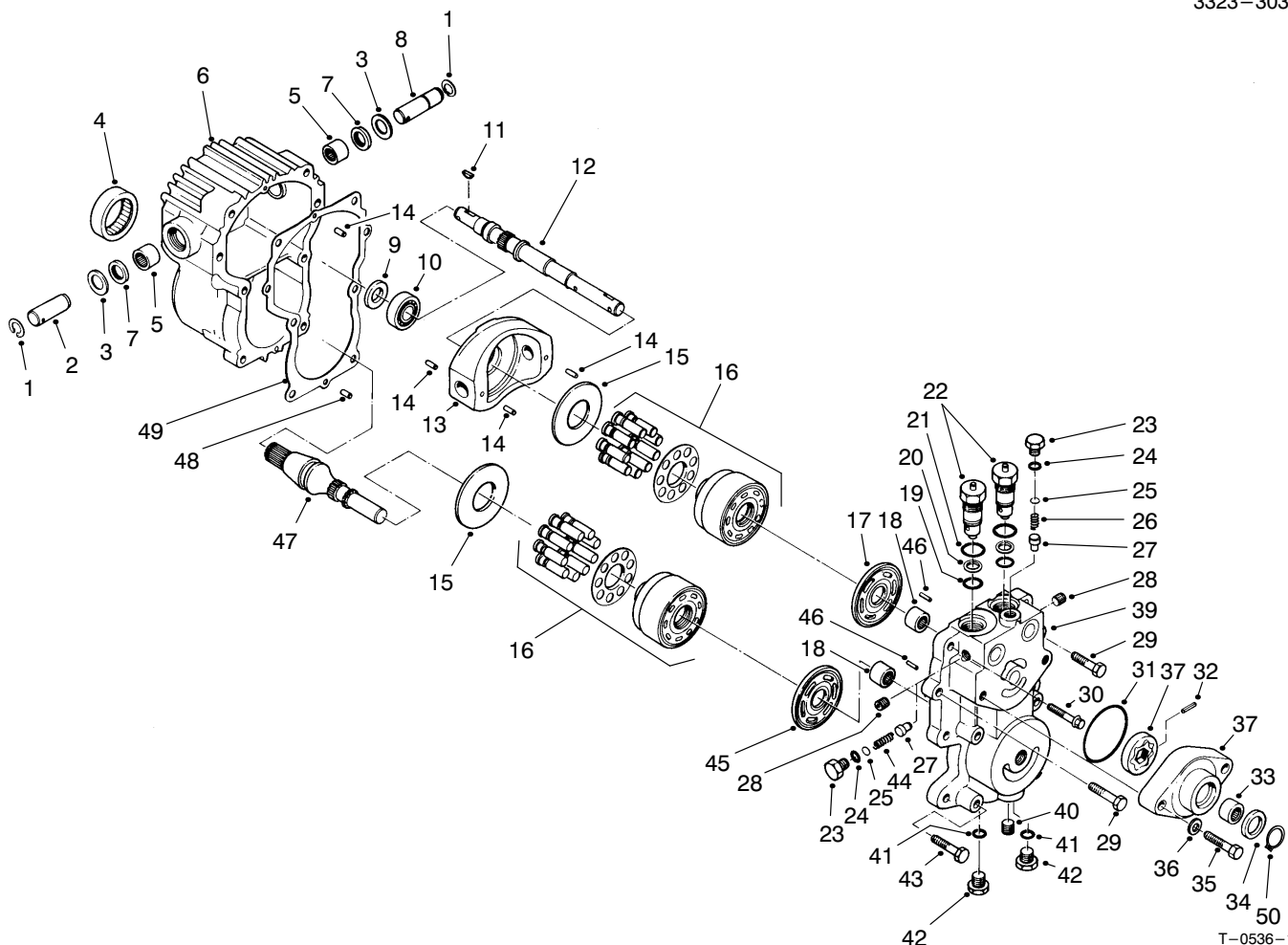


T-2640

## TRANSMISSION & DRIVE COUPLING ASSEMBLY

Ref. No.	Part No.	Description	No. Used
1	3296-39	Nut-Lock	2
2	3256-24	Washer-Flat	1
3	3253-21	Washer-Lock	4
4	5-0652	Spacer	1
5	63-6610	Shaft-Drive	1
6	27-4370	Hub-Pump	1
7	3257-5	Key-Woodruff	1
8	3241-6	Screw-Set	2
9	23-2300	Filter-Oil	1
10	27-9620	Screw-HH	1
11	27-3680	Spacer-Mounting	4
12	323-39	Screw-HH	3
13	92-5513	Transmission	1
14	27-3690	Gasket-Transmission	1
15	86-7220	Gear-Transmission Output	1
16	32120-72	Ring-Retaining	1
17	3272-10	Pin-Cotter	1
18	63-7170	Anchor-Transmission	1
19	3218-3	Nut-Jam	2
20	66-8490	Hose-Hydraulic	1
21	82-8530	Fitting-Hydraulic, Straight (Incl. Ref. #56 & 57)	1
22	63-3110	Fitting-Hydraulic (Incl. Ref. #56)	2
23	353-979	Fitting-Hydraulic, Barbed (Incl. Ref. #56)	1
24	92-5082	Hose-Hydraulic	2
25	23-2270	Bushing-Rubber	1
26	3256-26	Washer-Flat	1
28	2412-108	Clamp-Hose	4
29	92-5076	Adapter-Filter	1

Ref. No.	Part No.	Description	No. Used
30	92-5085	Union-Filter	1
31	92-5087	Seal-Adapter, Filter	1
32	92-5086	Fitting-Hydraulic 90° (Incl. Ref. #55)	1
33	92-5512	Fitting-Hose (Incl. Ref. #54)	2
34	3220-7	Nut-Jam	1
35	353-990	Plug (Incl. Ref. #54)	1
36	353-988	Plug (Incl. Ref. #55)	1
37	44-2230	Coupling-Rubber	2
38	27-6590	Spacer-Coupling, Rubber	4
39	27-6600	Spacer-Coupling	4
40	3210-5	Screw-HH	4
41	32152-5	Nut-Lock	6
42	3210-8	Screw-HH	4
43	3256-71	Washer-Flat	4
44	3253-4	Washer-Lock	5
46	33104-050	Screw-HHF	3
47	95-2502	Plate-Adapter, Engine	1
48	63-6410	Tube-Control, Pump	1
49	67-1900	Screw-Special	1
50	2412-4	Clamp	1
51	2412-119	Clamp-Hose	1
52	38-3400	Guard-Rubber	1
53	92-5083	Hose-Hydraulic	1
54	237-78	O-Ring	3
55	237-79	O-Ring	2
56	237-42	O-Ring	4
57	237-22	O-Ring	1



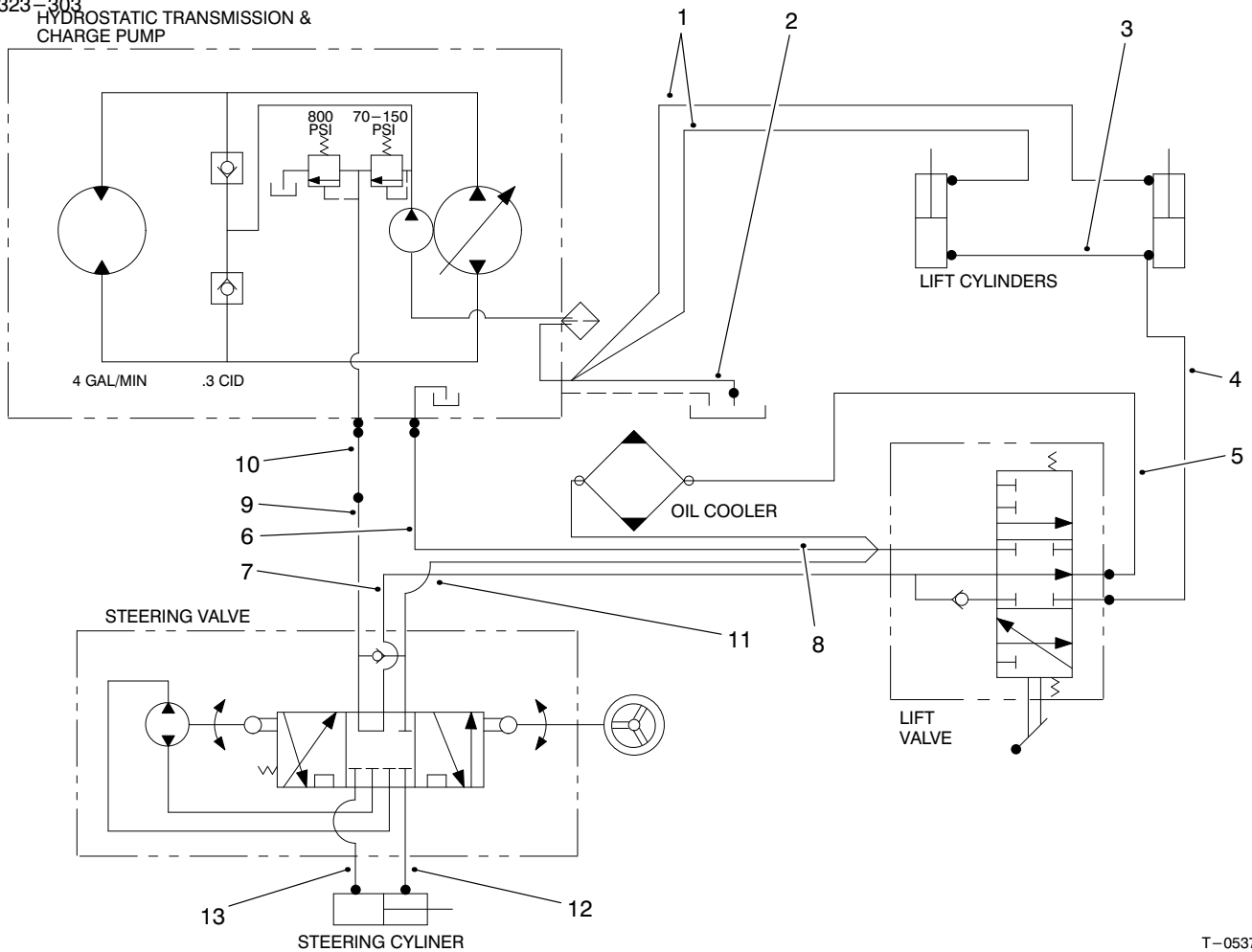
T-0536-1

## TRANSMISSION ASSEMBLY NO. 92-5513

Ref. No.	Part No.	Description	No. Used
1	32151-46	Ring-Retaining	2
2	25-2500	Shaft-Trunnion	1
3	25-2510	Washer	2
4	28-3300	Bearing-Roller	1
5	28-3310	Bearing-Needle	2
6	92-5709	Housing	1
7	25-3210	Lip Seal	2
8	28-3670	Shaft-Trunnion	1
9	93-4133	Lip Seal	1
10	28-3650	Bearing-Ball	1
11	3257-5	Key-Woodruff	2
12	28-3640	Shaft-Pump	1
13	49-7820	Variable Swashplate	1
14	32121-91	Pin	3
15	25-2380	Plate-Thrust	2
16	48-1800	Kit-Cylinder Block	2
17	46-7320	Plate-Pump Valve	1
18	25-3300	Bearing-Needle	2
19	28-3590	O-Ring	2
20	28-3580	Ring-Backup	2
21	28-3570	O-Ring	2
22	49-7830	Asm-Check Valve (Incl. Ref. #19-21)	2
23	25-2460	Hex Hd. Plug	2
24	28-3400	O-Ring	2
25	25-2470	Shim Pack	A/R

Ref. No.	Part No.	Description	No. Used
26	46-7310	Relief Valve Spring Imp.	1
27	28-3420	Relief Valve Cone Chg.	2
28	285-17	Plug-Pipe	4
29	323-8	Screw-HH	2
30	28-3530	Screw-HH	2
31	28-3520	O-Ring	1
32	38-2680	Pin	1
33	28-3480	Bearing-Needle	1
34	94-2975	Shaft-Seal	1
35	324-23	Screw-HH	2
36	28-3450	Washer-Flat	2
37	38-2670	Kit-Charge Pump (Incl. Ref. #31-34 & 50)	1
39	92-5716	Center Section	1
40	92-5717	Plug-Pipe	1
41		O-Ring	2
42	28-3440	Threaded Plug (Incl. Ref. #41)	2
43	323-10	Screw-HH.	4
44	25-2480	Relief Valve Spring Chg.	1
45	28-3380	Plate-Motor Valve	1
46	25-2430	Pin	2
47	49-8200	Shaft-Motor	1
48	28-3350	Pin	2
49	28-3340	Gasket	1
50	94-2976	Ring-Retaining	1

3323-303  
HYDROSTATIC TRANSMISSION &  
CHARGE PUMP

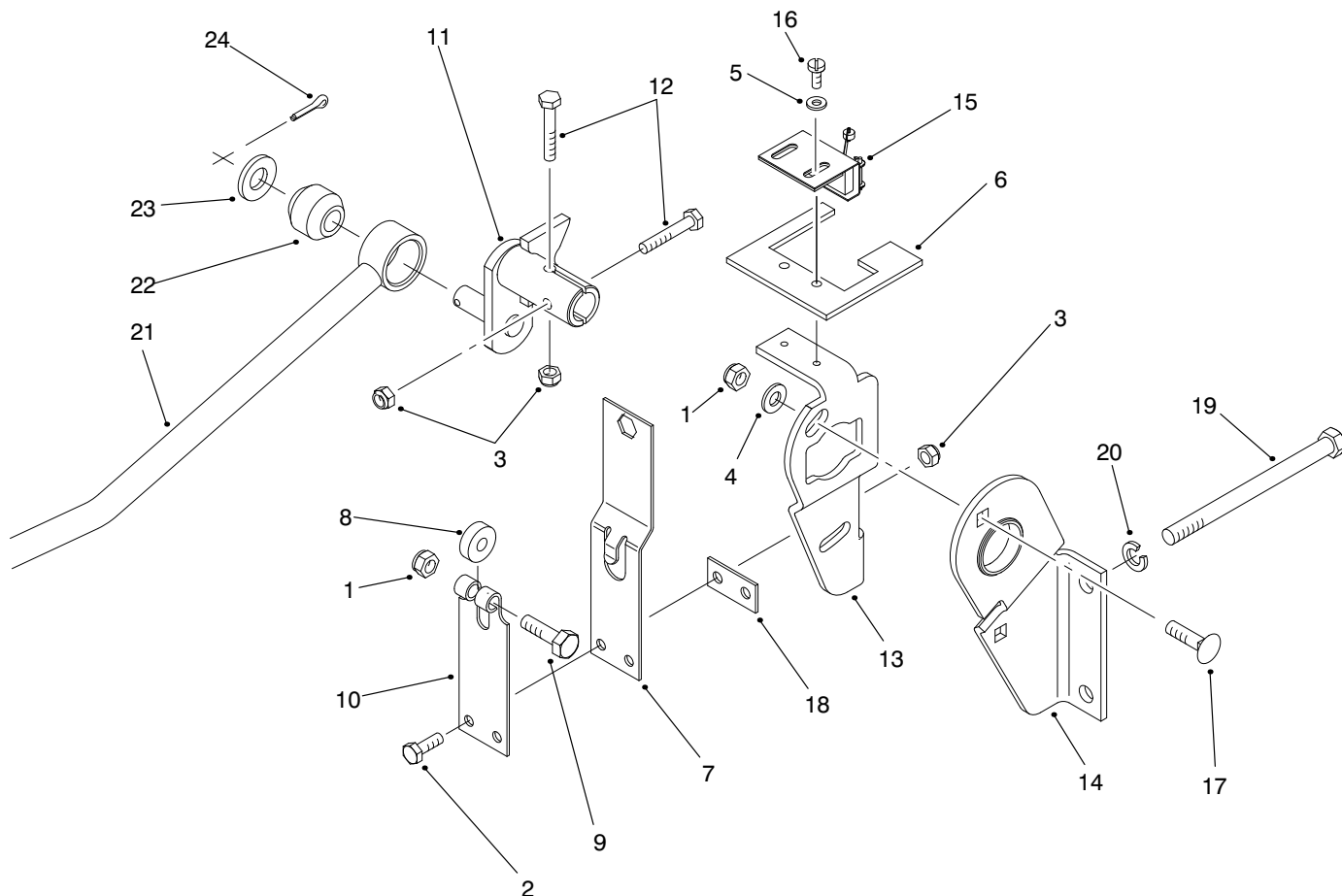


T-0537-4

## HYDRAULIC SCHEMATIC

Ref. No.	Part No.	Description	No. Used
1	92-5082	Hose	2
2	92-5083	Hose	1
3	66-8190	Hose	1
4	66-8640	Hose	1
5	95-3420	Hose	1
6	66-8150	Hose	1

Ref. No.	Part No.	Description	No. Used
7	66-8630	Tube	1
8	95-3421	Hose	1
9	66-8620	Tube	1
10	66-8490	Hose	1
11	66-8140	Hose	1
12	66-8170	Hose	2

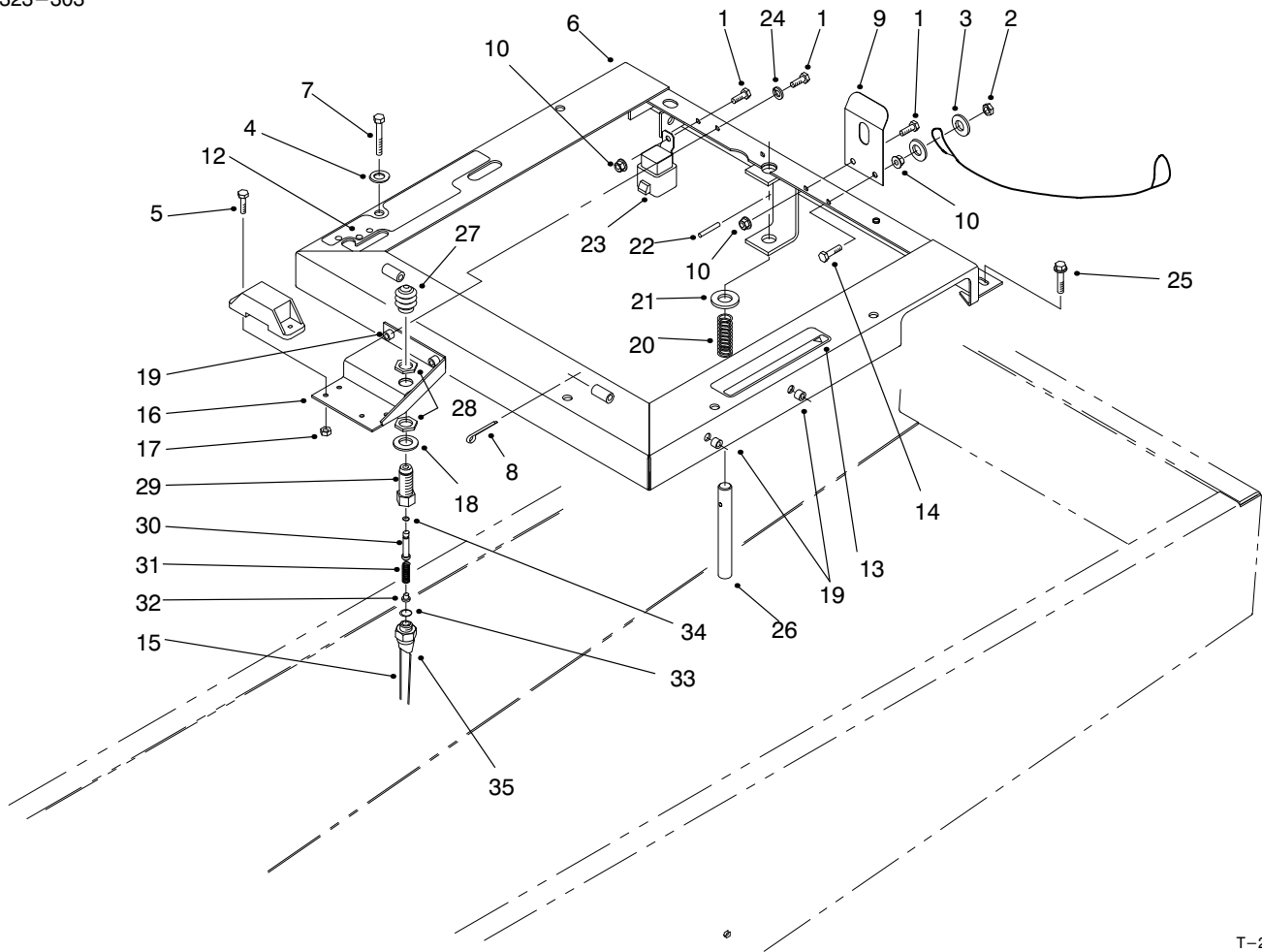


T-2641

## TRANSMISSION INTERLOCK ASSEMBLY

Ref. No.	Part No.	Description	No. Used
1	3296-29	Nut-Lock	3
2	321-4	Screw-HH	2
3	3296-42	Nut-Lock	4
4	3256-23	Washer-Flat	2
5	3256-51	Washer-Flat	2
6	95-1552	Stop-Leaf Spring	1
7	29-6140	Spring-Leaf, Extended	1
8	251-259	Bearing-Ball	1
9	322-17	Screw-HH	1
10	29-6150	Spring-Leaf	1
11	29-9790	Lever-Pump	1
12	321-9	Screw-HH	2

Ref. No.	Part No.	Description	No. Used
13	95-1551	Plate-Pump	1
14	52-8890	Bracket-Mounting	1
15	94-1754	Asm-Switch & Roller	1
16	3251-2	Screw-Machine	2
17	3230-2	Bolt-Carriage	2
18	51-3150	Shim-Spring Arm	1
19	323-39	Screw-HH	2
20	3253-21	Washer-Lock	2
21	63-6410	Tube-Pump Control	1
22	23-2270	Bushing-Rubber	1
23	3256-26	Washer-Flat	1
24	3272-10	Pin-Cotter	1

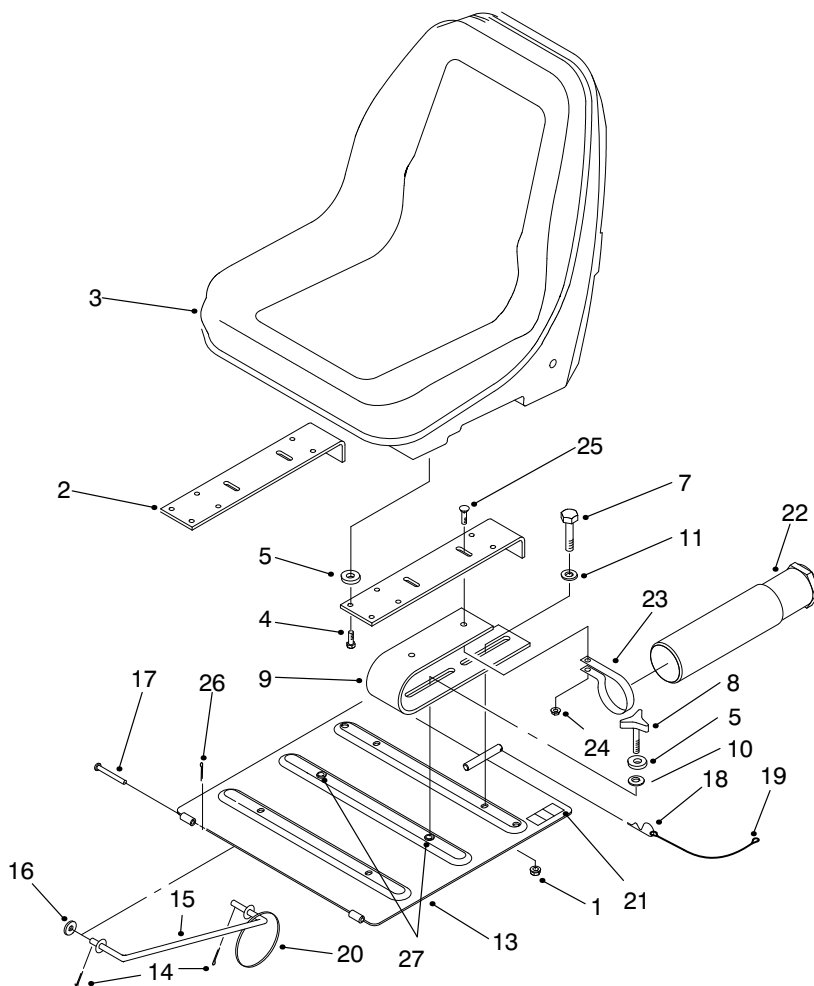


T-2674

## SEAT PLATFORM ASSEMBLY

Ref. No.	Part No.	Description	No. Used
1	321-4	Screw-HH	3
2	3296-42	Nut-Lock	1
3	3256-22	Washer-Flat	2
4	3256-23	Washer-Flat	6
5	32105-13	Screw-HH	2
6	92-8877	Frame-Seat	1
7	322-13	Screw-HH	6
8	3272-4	Pin-Cotter	2
9	66-2630	Latch-Seat	1
10	32128-33	Nut-HHF	3
12	66-8750	Decal-Throttle/Lift Valve	1
13	67-1710	Decal-Caution	1
14	321-6	Screw-HH	1
15	43-9071	Asm-Switch, Limit (Incl. Ref. #15, & 27-35)	1
16	92-7892	Bracket-Switch, Seat	1
17	3296-12	Nut-Lock	2
18	3256-69	Washer-Flat	1

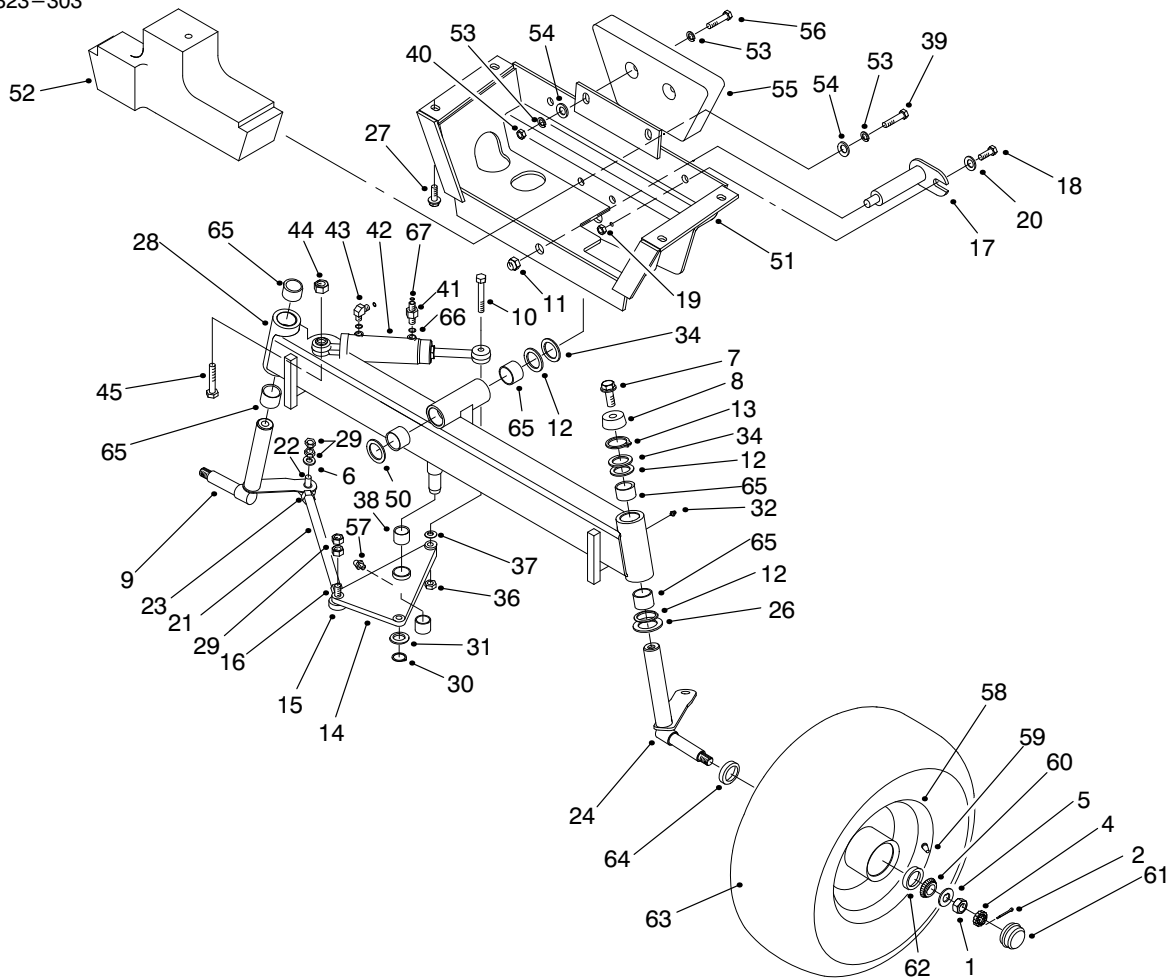
Ref. No.	Part No.	Description	No. Used
19	32148-6	Insert-Threaded	6
20	37-9590	Spring-Compression	1
21	3256-27	Washer-Flat	1
22	32121-6	Pin-Roll	1
23	63-7590	Relay	1
24	3253-3	Washer-Lock	2
25	3234-17	Screw-HFH	2
26	66-2590	Pin-Spring, Seat	1
27	43-8870	Boot-Switch	1
28	218-461	Nut-HH	2
29	43-8620	Guide-Pin, Switch	1
30	43-8860	Plunger-Switch	1
31	43-8600	Spring-Compression	1
32	43-8610	Guide-Seat, Spring & Ball	1
33	237-30	O-Ring	1
34	237-7	O-Ring	1
35	72-4320	Switch-Ball	1



T-2648

## SEAT ASSEMBLY

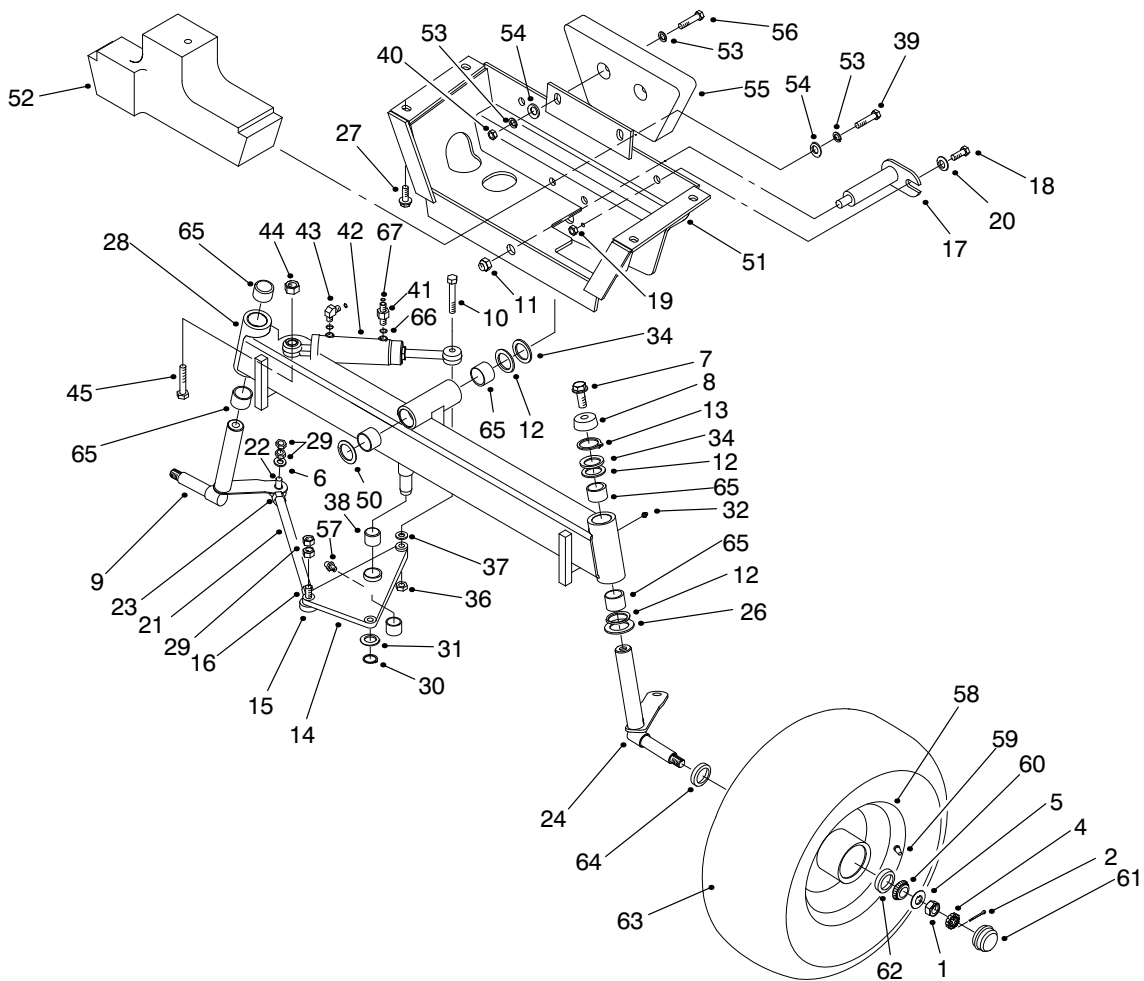
Ref. No.	Part No.	Description	No. Used	Ref. No.	Part No.	Description	No. Used
1	3296-39	Nut-Lock	2	16	3256-24	Washer-Flat	1
2	95-3447	Mount-Seat	2	17	283-49	Pin-Clevis	2
3	94-9691	Seat	1	18	3290-255	Pin-Cotter, Hair	1
4	3234-17	Screw-HFH	4	19	28-8070	Lanyard	1
5	109989	Spacer	6	20	3290-378	Tie-Cable	1
7	27-5240	Bolt-Shoulder	2	21	71-3730	Decal-Gas Only	1
8	27-4570	Handle-Adjustment	2	22	74-0720	Tube-Manual	1
9	46-9110	Spring-Seat	2	23	2412-133	Clamp-R	2
10	36-8020	Washer	2	24	3290-357	Nut-Lock, Flange Hd.	4
11	3256-26	Washer-Flat	2	25	3231-22	Bolt-Carriage	4
13	92-5759	Plate-Seat	1	26	3272-4	Pin-Cotter	2
14	3272-11	Pin-Cotter	2	27	32148-9	Insert-Threaded	2
15	66-2800	Rod-Support	1				



T-2642

## REAR AXLE ASSEMBLY

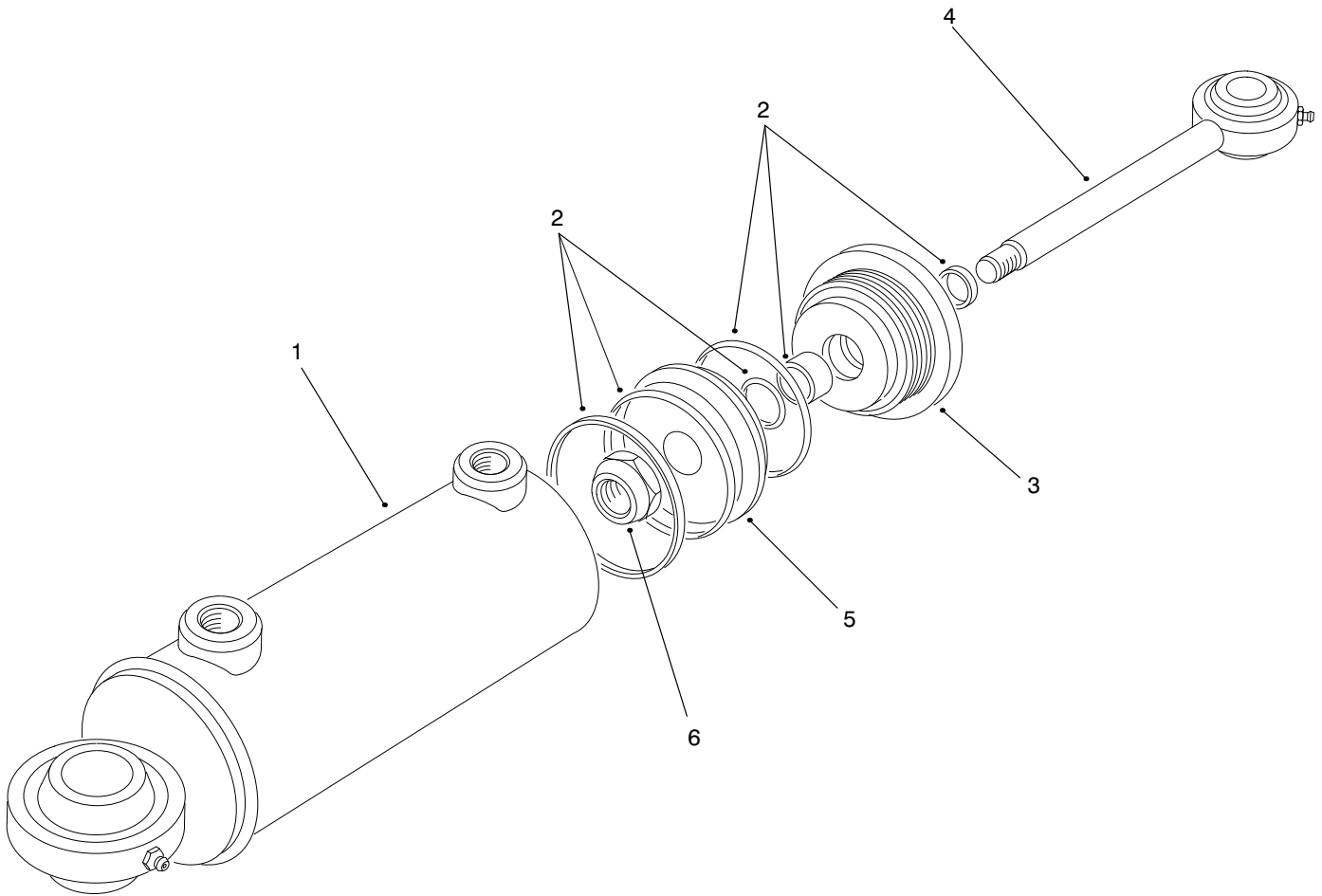
Ref. No.	Part No.	Description	No. Used	Ref. No.	Part No.	Description	No. Used
1	3220-7	Nut-Jam	2	29	3220-3	Nut-Jam	8
2	3272-13	Pin-Cotter	2	30	32151-77	Ring-Retaining	1
4	93-0307	Retainer-Nut, Lock	2	31	76-2980	Washer-Thrust	1
5	93-0309	Washer-Tab	2	32	302-5	Fitting-Grease	3
6	3256-24	Washer-Flat	2	34	56-2460	Washer-Flat	AR
7	3234-13	Screw-HHF	2	36	32128-45	Nut-Lock	1
8	66-2990	Cap-Spindle	2	37	67-9410	Washer-Flat	1
9	93-3196	Spindle-RH	1	38	76-2970	Bushing	2
10	328-25	Screw-HH	1	39	325-5	Screw-HH	2
11	3296-51	Nut-Lock	1	40	3217-9	Nut-HH	2
12	10-8110	Washer-Thrust	5	41	340-92	Fitting-Straight (Incl. Ref. #66 & 67)	1
13	32151-36	Ring-Retaining	2	42	76-2070	Cylinder-Steering	1
14	76-4810	Pivot-Steering	1	43	340-103	Fitting-Hydraulic 45° (Incl. Ref. #66 & 67)	1
15	21-0151	Asm-Socket, LH	2	44	32153-6	Nut-Hex. Lock	1
16	3220-12	Nut-Jam	2	45	67-7300	Screw-HH	1
17	63-6770	Pin	1	50	71-4540	Washer-Thrust	1
18	321-4	Screw-HH	1	51	63-6430	Frame-Rear	1
19	3296-42	Nut-Lock	1	52	95-2519	Weight	1
20	3256-22	Washer-Flat	1	53	3253-7	Washer-Lock	6
21	63-6880	Rod-Tie	2	54	3256-26	Washer-Flat	4
22	21-0141	Asm-Socket, RH	2	55	24-5790	Weight-Rear	1
23	3220-5	Nut-Jam	2	56	325-9	Screw-HH	2
24	93-3195	Spindle-LH	1	57	302-5	Fitting-Grease	1
26	256-121	Bushing	2	58	217-110	Asm-Wheel	2
27	3234-25	Screw-Flange	4	59	232-35	Stem-Valve	2
28	76-3000	Axle-Rear (Incl. Ref. #32 & 65)	1				



T-2642

## REAR AXLE ASSEMBLY (Continued)

Ref. No.	Part No.	Description	No. Used	Ref. No.	Part No.	Description	No. Used
60	254-94	Cone-Bearing	4	64	253-129	Seal	2
61	241-119	Cap-Dust	2	65	67-1750	Bushing	6
62	254-72	Cup-Bearing	4	66	237-78	O-Ring	2
63	231-105	Tire	2	67	237-21	O-Ring	2

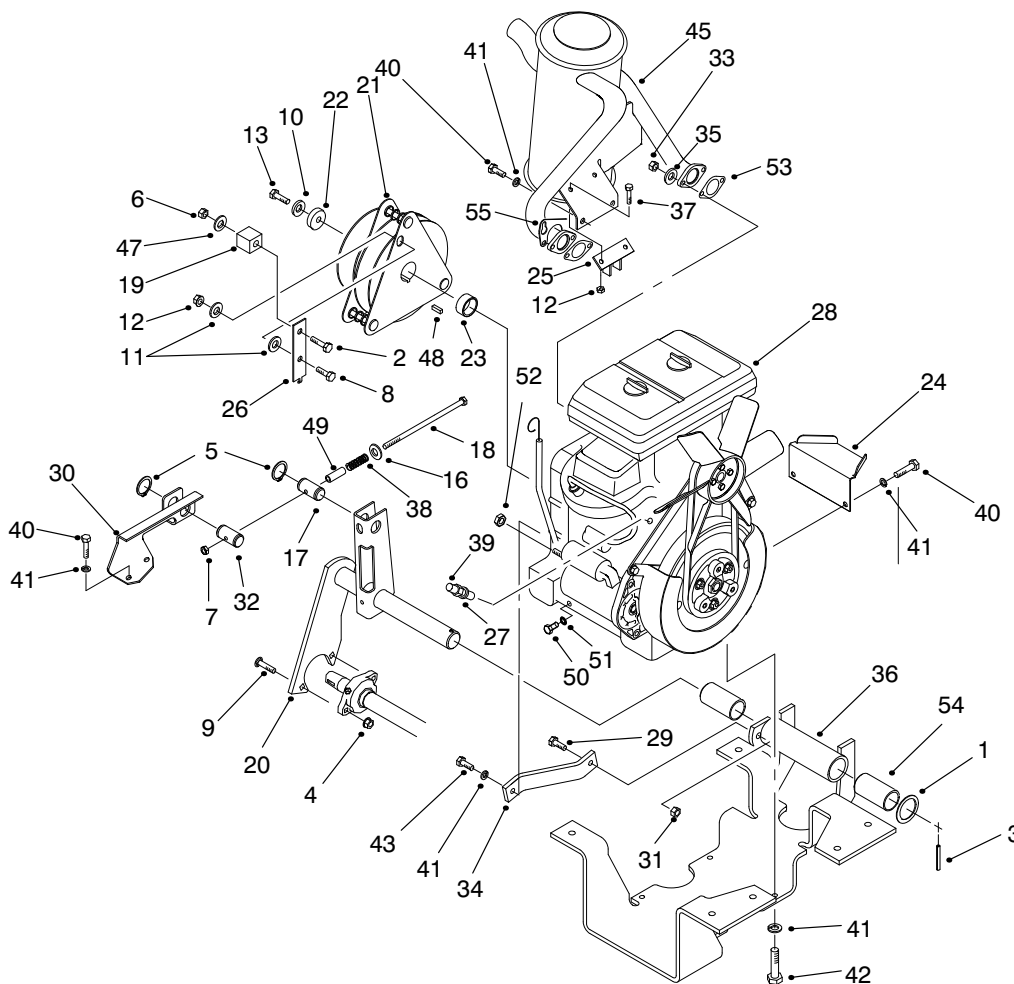


T-0541-1

## HYDRAULIC CYLINDER NO. 76-2070

Ref. No.	Part No.	Description	No. Used
1	66-2770	Tube-Cylinder	1
2	76-2090	Kit-Seal	1
3	76-2790	Gland	1

Ref. No.	Part No.	Description	No. Used
4	76-2080	Asm-Piston Rod	1
5	66-1940	Piston	1
6	66-1930	Nut-Lock	1

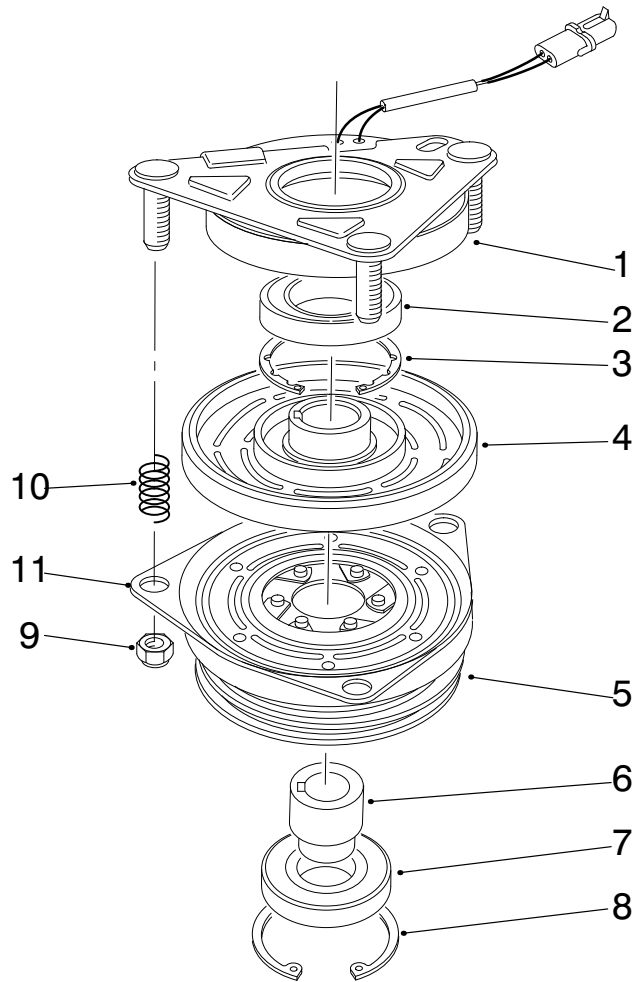


T-2675

## ENGINE INSTALLATION ASSEMBLY

Ref. No.	Part No.	Description	No. Used
1	3-4324	Washer-Flat	1
2	321-8	Screw-HH	1
3	32121-32	Pin-Roll	1
4	32149-1	Nut-Keps	1
5	32151-83	Ring-Retaining	4
6	32153-4	Nut-Lock	1
7	3218-2	Nut-Jam	1
8	323-34	Screw-HH	1
9	3230-4	Bolt-Carriage	2
10	48-9590	Washer-Lock	1
11	3256-24	Washer-Flat	2
12	3296-56	Nut-lock	2
13	3215-3	Screw-HHF	1
16	4-2390	Washer	2
17	63-6290	Pin-Tension	1
18	94-7431	Bolt	1
19	95-6328	Bumper-Clutch	1
20	95-2507	Shaft-Tension, PTO	1
21	95-2516	Clutch-Electric	1
22	95-2517	Spacer	1
23	95-2518	Spacer	1
24	95-2534	Tray-Oil	1
25	95-2537	Bracket-Anti Rotation	1
26	95-2538	Lever-Clutch, Anchor	1
27	95-3429	Adapter	1
28	95-3436	Engine	1

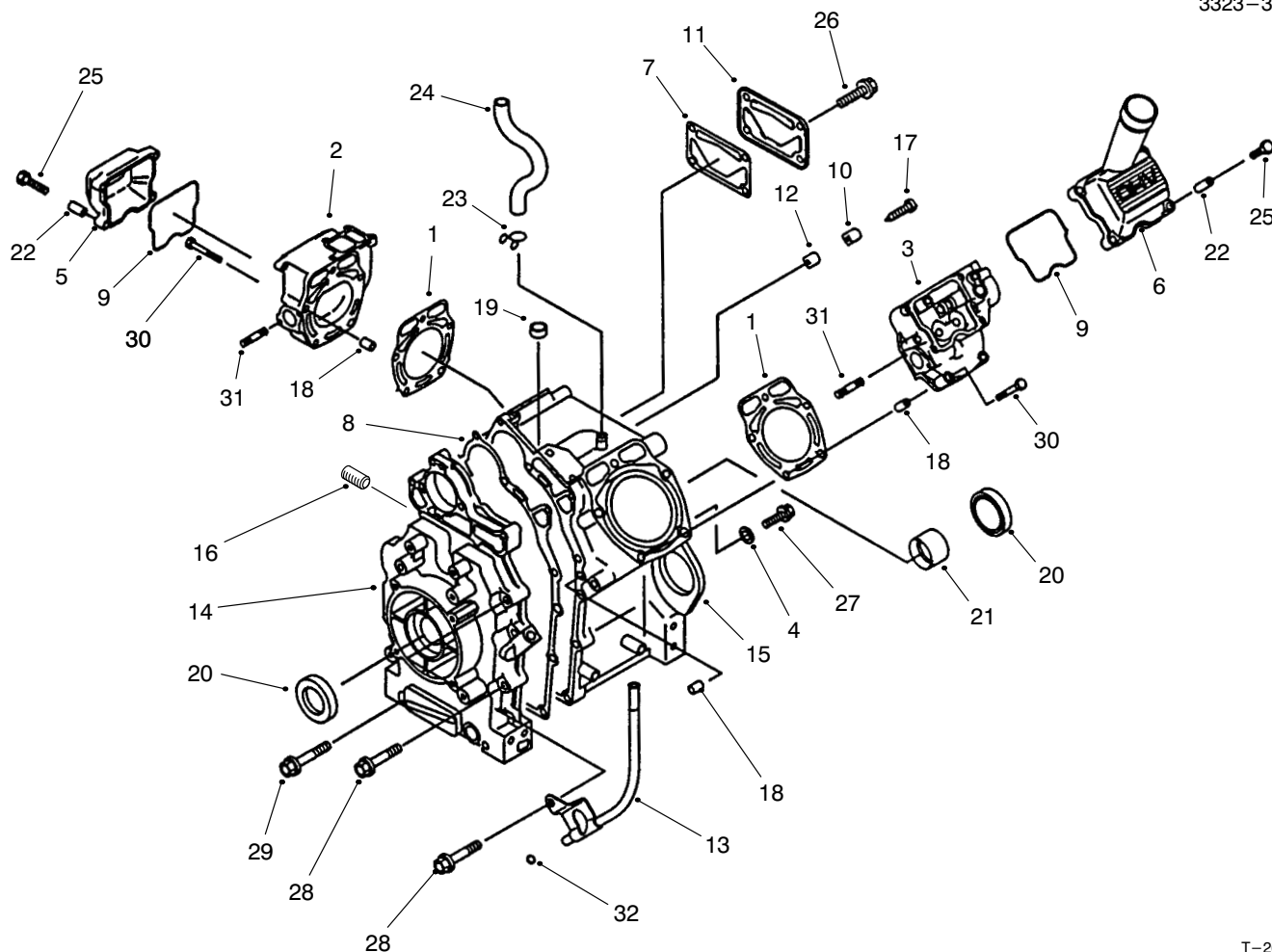
Ref. No.	Part No.	Description	No. Used
29	3210-7	Screw-HH	1
30	95-3448	Bracket-Tensioner	1
31	3296-4	Nut-Lock	1
32	95-3449	Pin-Tension	1
33	33013-00	Nut-Hex.	4
34	95-6303	Strap-Support	1
35	3253-3	Washer-Lock	4
36	95-6306	Asm-Plate, Engine Mounting	1
37	321-4	Screw-HH	2
38	95-6307	Spring-Compression	1
39	99-8420	Temp Sender	1
40	33104-020	Screw-HHF	6
41	42-9850	Washer-Lock	11
42	33104-025	Screw-HHF	4
43	3210-3	Screw-HH	1
45	95-2528	Muffler	1
47	3256-60	Washer-Flat	1
48	5-4916	Key-Square	1
49	95-6327	Spacer	1
50	48-7700	Screw-HH	1
51	3254-2	Washer-Lock	1
52	95-9968	Nut-Hex	1
53	95-9953	Gasket-Manifold	2
54	256-299	Bushing	2
55	95-9952	Lift Point-Engine	1



T-0544-1

## CLUTCH ASSEMBLY NO. 95-2516

Ref. No.	Part No.	Description	No. Used	Ref. No.	Part No.	Description	No. Used
1	95-6323	Asm-Field Rotor (Incl. Ref. #2-4)	1	6	95-6325	Collar-Bearing	1
2		Bearing-Field	1	7	67-7090	Bearing-Pulley	1
3		Ring-Retaining	1	8	67-7060	Ring-Retaining	1
4		Asm-Field Coil	1	9	3296-6	Nut-Lock	3
5	95-6324	Asm-Arm. & Pulley (Incl. Ref. #6-8)	1	10	44-8320	Spring	3
				11	67-7100	Plate-Brake	1

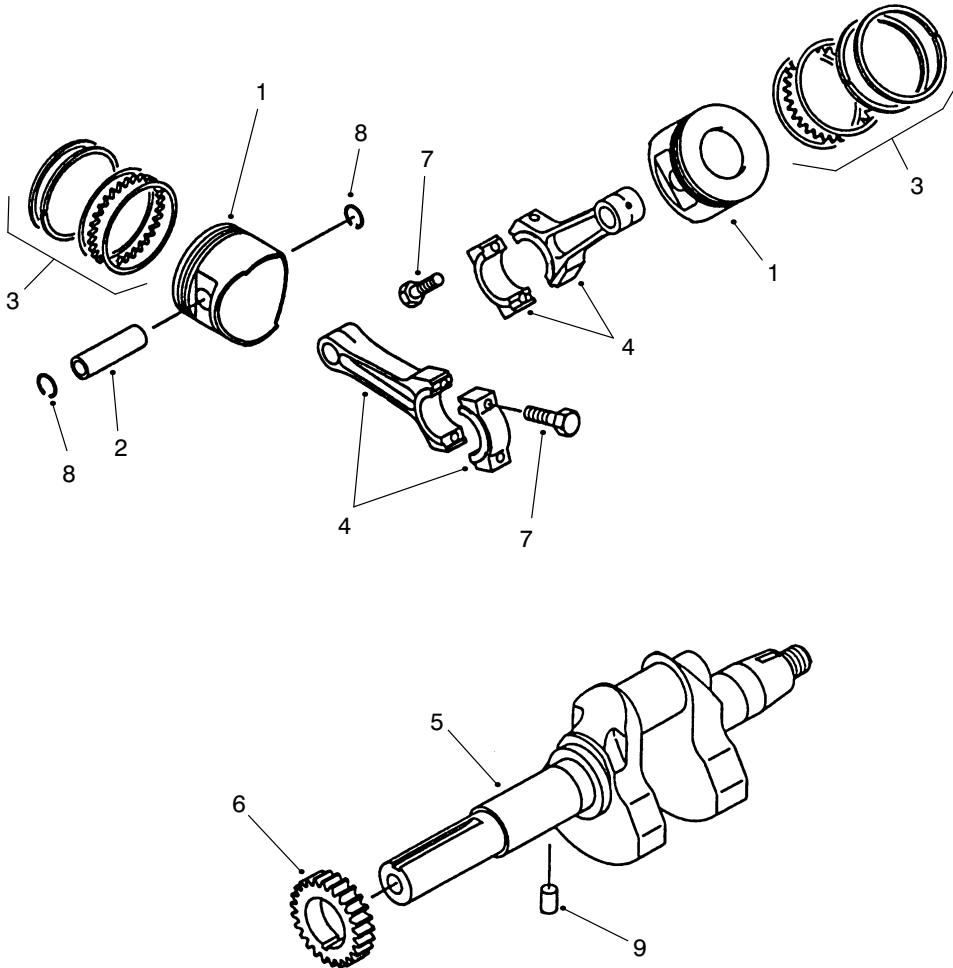


T-2686

## CRANKCASE ASSEMBLY

Ref. No.	Part No.	Description	No. Used
1	95-9700	Gasket-Head	2
2	95-9701	Head-Cylinder	1
3	95-9702	Head-Cylinder	1
4	95-9703	Gasket	2
5	95-9704	Cover-Rocker	1
6	95-9705	Cover-Rocker	1
7	95-9706	Gasket-Breather	1
8	95-9707	Gasket-Crankcase Cover	1
9	95-9708	Gasket-Rocker Cover	2
10	95-9709	Plate	1
11	95-9710	Cover	1
12	95-9711	Valve	1
13	95-9712	Pipe-Oil Level	1
14	95-9713	Cover-Crankcase	1
15	95-9714	Asm-Crankcase (Incl. Ref. #21)	1
16	95-9715	Joint	1

Ref. No.	Part No.	Description	No. Used
17	95-9716	Screw	1
18	93-8512	Pin	6
19	KW10227	Seal-Oil	1
20	95-9717	Seal-Oil	2
21	95-9718	Bearing	1
22	95-9719	Collar	8
23	95-9720	Clamp	1
24	95-9721	Tube	1
25	93-8548	Bolt-Flanged	8
26	93-8679	Bolt-Flanged	4
27	95-9722	Bolt-Flanged	2
28	KW10035	Bolt-Flanged	6
29	95-9723	Bolt-Flanged	2
30	95-9724	Bolt-Flanged	8
31	95-9725	Bolt-Stud	2
32	95-9726	O-Ring	1



T-2687

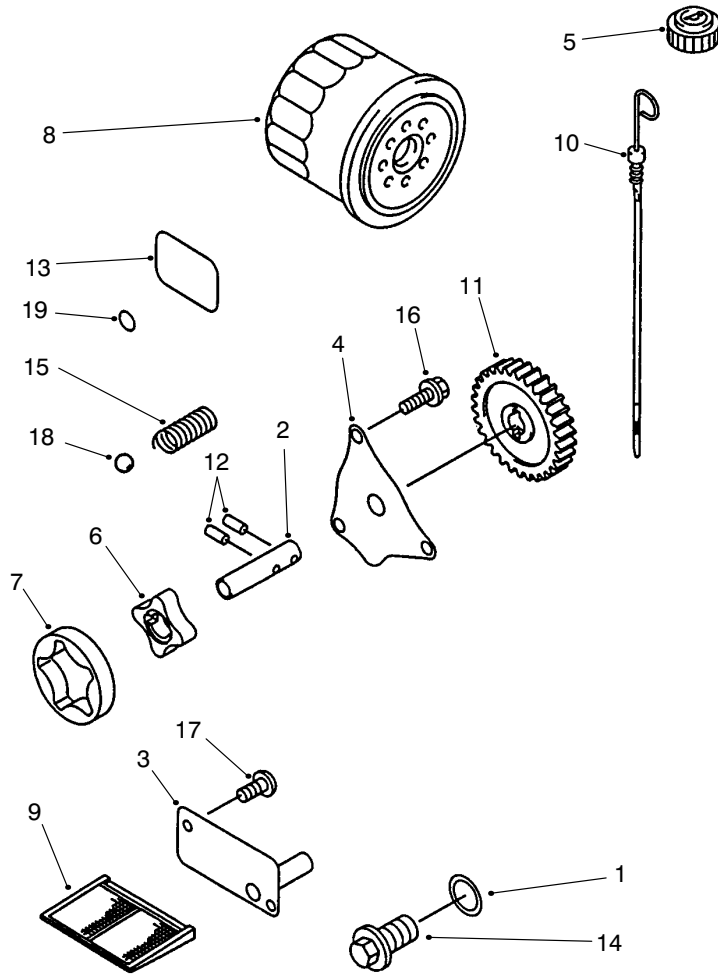
## PISTON & CRANKSHAFT ASSEMBLY

Ref. No.	Part No.	Description	No. Used
1	95-9727	Piston-Std.	2
*	95-6331	Piston-OS 0.25mm	2
*	95-6332	Piston-OS 0.50mm	2
2	95-9728	Pin-Piston	2
3	95-9729	Piston Ring Set-Std.	2
*	95-6333	Piston Ring Set-OS 0.25mm	2
*	95-6334	Piston Ring Set-OS 0.50mm	2
4	95-9734	Asm-Connecting Rod Standard (Incl. Ref. #7)	2

Ref. No.	Part No.	Description	No. Used
*4	95-6335	Asm-Connecting Rod (US 0.50) (Incl. Ref. #7)	2
5	95-9736	Asm-Crankshaft (Incl. Ref. #6 & 9)	1
6	95-9737	Gear-Spur	1
7	95-9738	Bolt	4
8	95-9739	Ring-Snap	4
9	95-9740	Pin-Dowel	1

\*Not Illustrated



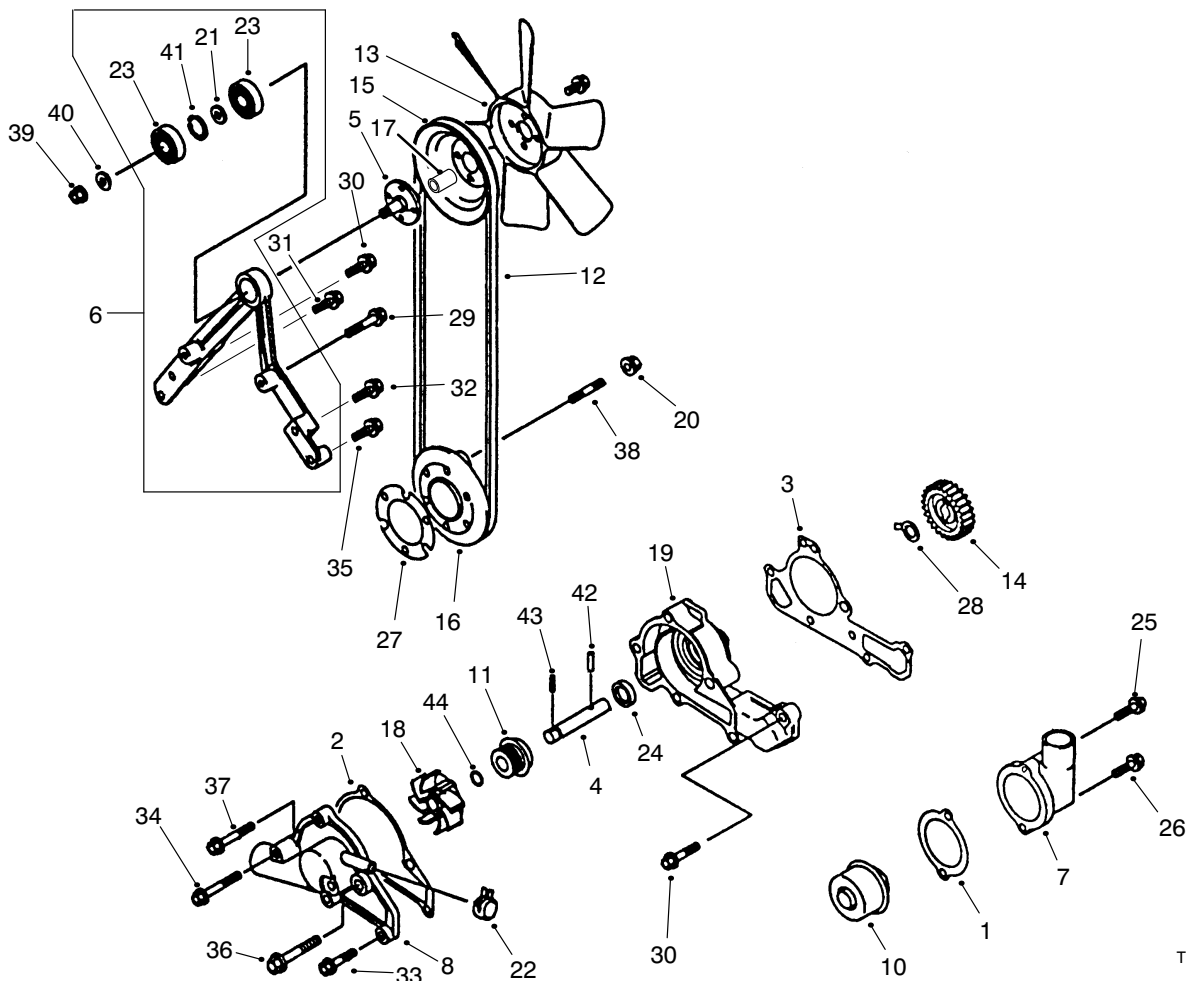


T-2689

## OIL PUMP & FILTER ASSEMBLY

Ref. No.	Part No.	Description	No. Used
1	95-9755	Gasket-Drain Plug	1
2	95-9756	Shaft-Oil Pump	1
3	95-9757	Plate	1
4	95-9758	Cover-Oil Pump	1
5	95-9759	Cap-Oil Filter	1
6	95-9760	Rotor-Pump IN	1
7	95-9761	Rotor-Pump OUT	1
8	KW10761	Filter-Oil	1
9	95-9762	Screen-Oil	1
10	95-9763	Gauge-Oil Level	1

Ref. No.	Part No.	Description	No. Used
11	95-9764	Gear-Spur	1
12	95-9765	Pin	2
13	95-9766	O-Ring	1
14	95-9767	Plug-Drain	1
15	95-9768	Spring	1
16	93-8566	Bolt-Flanged	3
17	95-9769	Screw-Pan	2
18	95-9770	Ball-Steel	1
19	95-9771	O-Ring	1



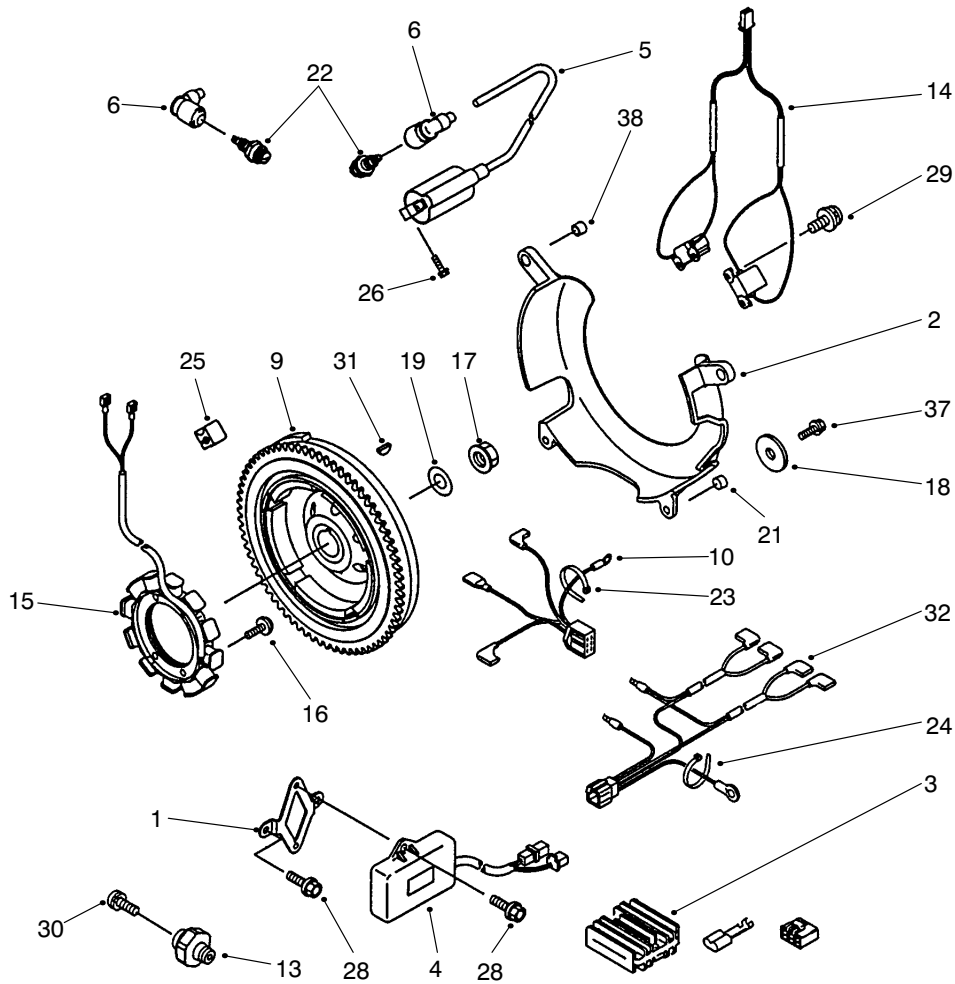
T-2690

## WATER PUMP ASSEMBLY

Ref. No.	Part No.	Description	No. Used
1	95-9772	Gasket - Thermostat Cover	1
2	95-9773	Gasket - Pump Cover	1
3	95-9774	Gasket - Pump Case	1
4	95-9776	Shaft - Impeller	1
5	95-9777	Shaft - Pulley	1
6	95-9778	Asm-Housing (Incl. Ref. #21, 23 & 39-41)	1
7	95-9779	Cover - Thermostat	1
8	95-9780	Cover - Pump	1
10	95-9782	Thermostat	1
11	95-9783	Seal-Mechanical	1
12	95-9784	Belt - Fan	1
13	95-9785	Fan - Cooling	1
14	95-9786	Gear - Spur	1
15	95-9787	Pulley	1
16	95-9788	Pulley	1
17	95-9789	Spacer - Fan	1
18	95-9791	Impeller	1
19	95-9792	Case-Pump	1
20	95-9793	Nut	1
21	95-9795	Spacer	1
22	95-9796	Clamp	2
23	95-9797	Bearing - Ball	2
24	95-9798	Seal - Oil	1

Ref. No.	Part No.	Description	No. Used
25	95-9799	Bolt	1
26	95-9800	Bolt	1
27	95-9802	Shim	AR
28	95-9803	Washer	1
29	KW10030	Bolt - Flanged	2
30	KW10513	Bolt - Flanged	1
31	KW10031	Bolt - Flanged	1
32	KW10516	Bolt - Flanged	1
33	95-9804	Bolt - Flanged	3
34	95-9805	Bolt - Flanged	1
35	KW10035	Bolt - Flanged	1
36	95-9806	Bolt - Flanged	1
37	95-9807	Bolt - Flanged	1
38	KW10545	Bolt - Stud	3
39	95-9808	Nut - Hex.	1
40	93-8668	Washer	1
41	95-9809	Circlip	1
42	95-9810	Pin - Dowel	1
43	95-9811	Pin - Dowel	1
44	95-9812	O-Ring	1
*	95-9781	Asm-Water Pump (Incl. Ref. #4, 11, 14, 18, 19, 24, 28, 42-44)	1

\*Not Illustrated

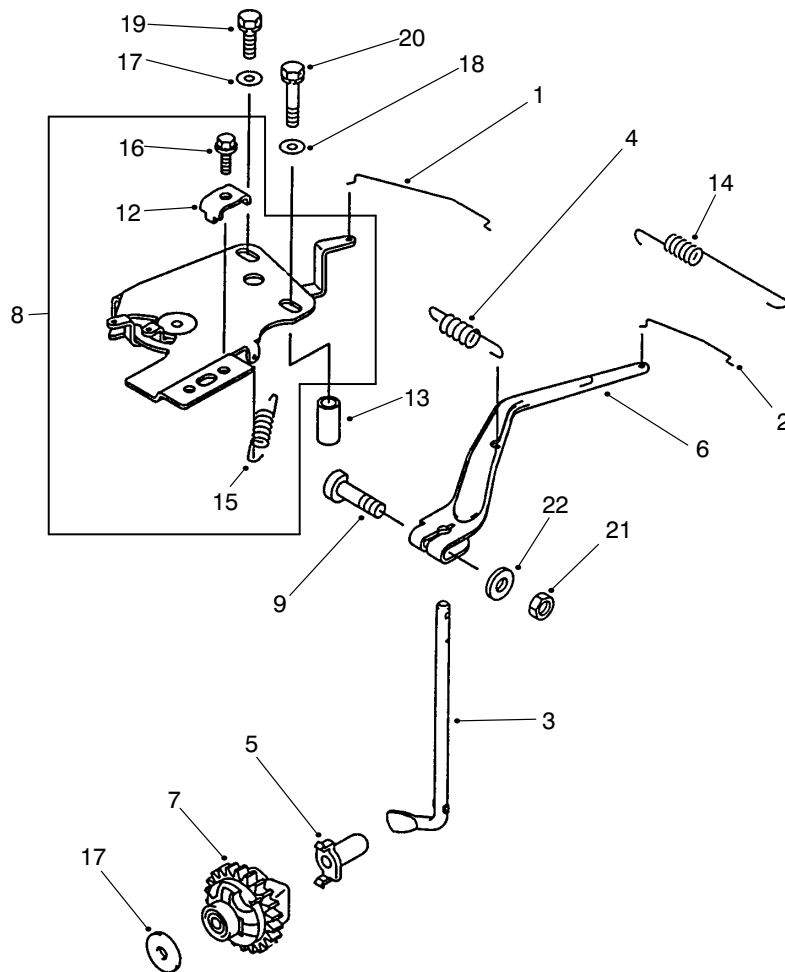


T-2691

## ELECTRICAL COMPONENTS ASSEMBLY

Ref. No.	Part No.	Description	No. Used
1	95-9813	Bracket	1
2	95-9814	Cover-Flywheel	1
3	95-9815	Regulator-Voltage	1
4	95-9816	Igniter	1
5	95-9819	Coil-Ignition	2
6	KW10087	Cap-Spark Plug	2
9	95-9820	Asm-Flywheel	1
10	95-9823	Harness	1
13	95-9824	Switch	1
14	95-9825	Coil-Pulsating	1
15	95-9826	Coil-Charging	1
16	95-9827	Screw	4
17	95-9828	Nut	1
18	95-9829	Washer	2

Ref. No.	Part No.	Description	No. Used
19	95-9830	Washer	1
21	95-9832	Collar	2
22	95-9833	Plug-Spark	2
23	95-9834	Band	2
24	95-9971	Band	1
25	95-9835	Clamp	1
26	95-9836	Bolt-Flanged	4
28	95-9817	Bolt-Flanged	2
29	95-9838	Screw-Pan Head	4
30	95-9839	Screw-Pan Head	1
31	KW10163	Key-Woodruff	1
32	95-9822	Harness	1
37	95-9837	Screw	4
38	95-9831	Collar	2

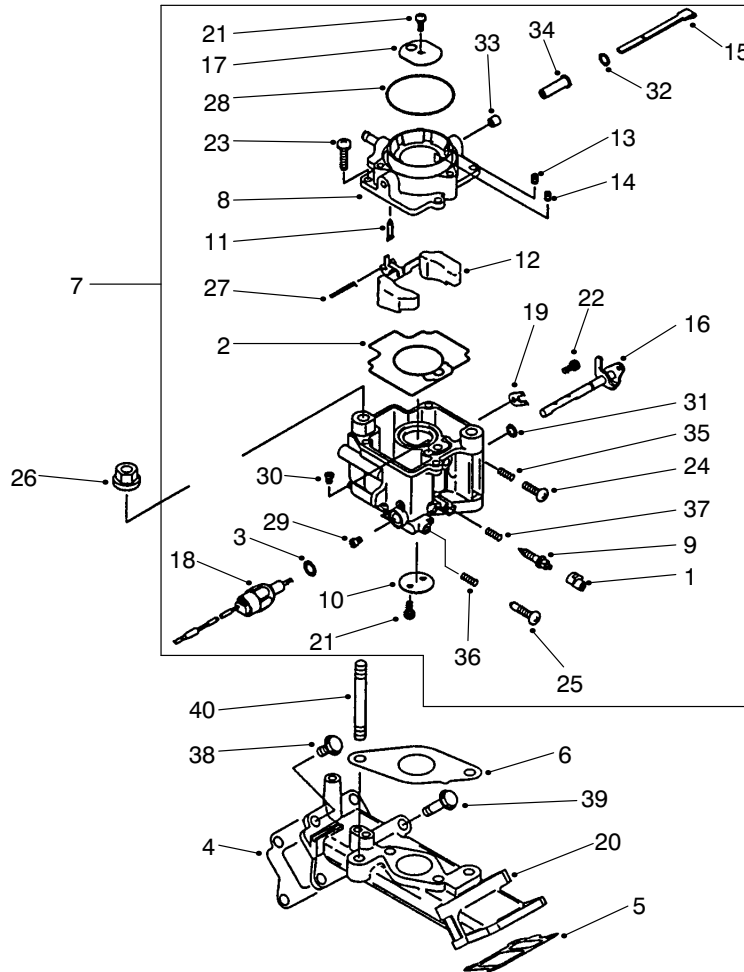


T-2692

## GOVERNOR ASSEMBLY

Ref. No.	Part No.	Description	No. Used
1	95-9840	Link-Choke	1
2	95-9841	Link	1
3	95-9842	Arm-Pivot	1
4	95-9843	Spring-Governor	1
5	93-8610	Sleeve	1
6	95-9844	Arm-Governor	1
7	95-9845	Asm-Governor	1
8	95-9846	Asm-Panel, Comp. Control (Incl. Ref. #12, 15 & 16)	1
9	93-8606	Bolt	1
12	95-9849	Clamp	2

Ref. No.	Part No.	Description	No. Used
13	95-9850	Collar	1
14	95-9851	Spring	1
15	95-9852	Spring	2
16	95-9853	Bolt	2
17	93-8612	Washer	2
18	95-9854	Washer	2
19	95-9855	Bolt-Upset	1
20	95-9856	Bolt-Upset	1
21	KW10101	Nut-Hex.	1
22	93-8645	Washer-Flat	1

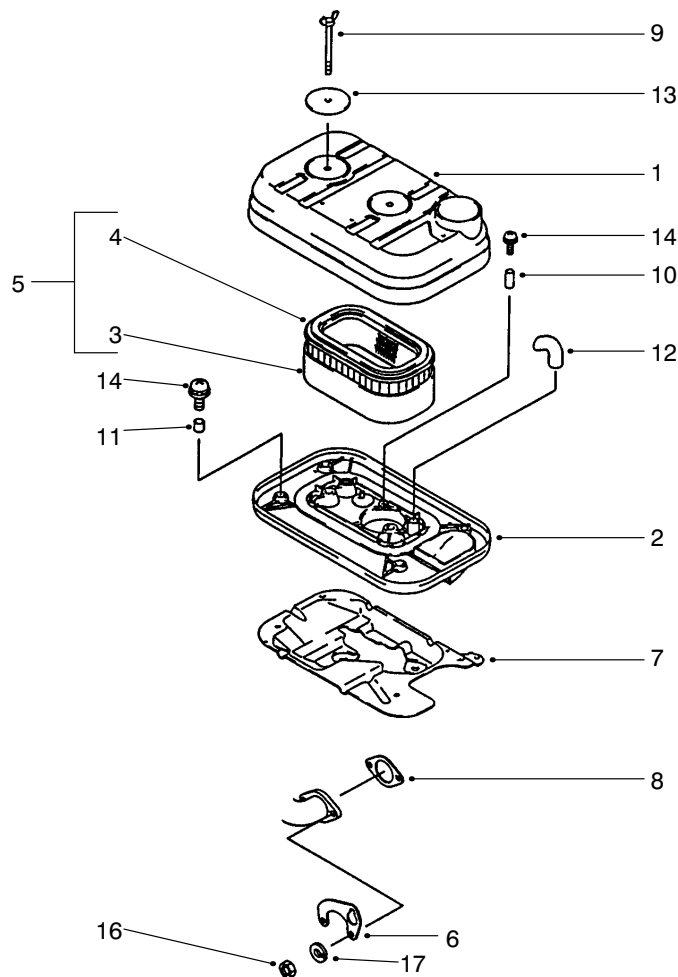


T-2693

## CARBURETOR ASSEMBLY

Ref. No.	Part No.	Description	No. Used
1	95-9857	Cap	1
2	95-9858	Gasket	1
3	95-9859	Gasket	1
4	95-9860	Gasket-Intake, Manifold	1
5	95-9861	Gasket-Intake, Manifold	1
6	95-9862	Gasket-Carburetor	1
7	95-9863	Asm-Carburetor (Incl. Ref. #1-3, 8-25, & 27-37)	1
8	95-9864	Cap-Chamber	1
9	95-9865	Screw-Pilot Air	1
10	95-9866	Valve-Throttle	1
11	95-9867	Valve-Float	1
12	95-9868	Float	1
13	95-9869	Jet-Air, #1.8	1
14	95-9870	Jet-Air, #0.9	1
15	95-9871	Shaft-Carburetor Choke	1
16	95-9872	Shaft-Carburetor Throttle	1
17	95-9873	Valve-Choke	1
18	95-9874	Solenoid	1
19	95-9875	Stopper	1

Ref. No.	Part No.	Description	No. Used
20	99-8439	Manifold-Intake	1
21	95-9877	Screw	3
22	95-9878	Screw	1
23	95-9879	Screw	4
24	95-9880	Screw	1
25	95-9881	Screw	1
26	KW10621	Nut	2
27	95-9883	Pin	1
28	95-9972	O-Ring	1
29	95-9884	Jet-Main, #112	1
30	95-9885	Jet-Pilot, #58	1
31	95-9886	Seal	1
32	95-9887	Seal	1
33	95-9888	Collar	1
34	95-9889	Collar	1
35	95-9890	Spring	1
36	95-9891	Spring	1
37	95-9892	Spring	1
38	95-9893	Bolt-Flanged	5
39	95-9894	Bolt-Flanged	3
40	95-9895	Bolt-Stud	2

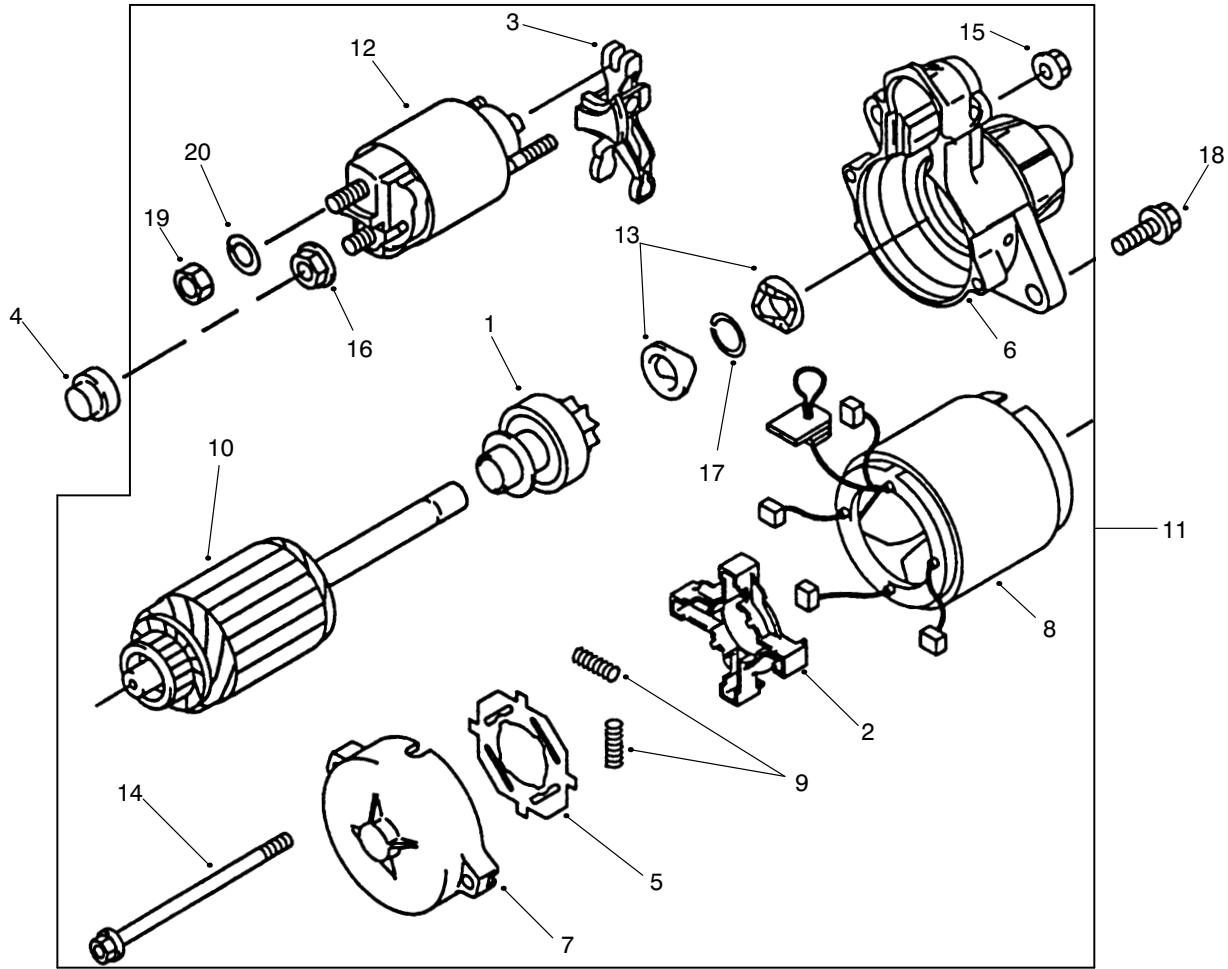


T-2694

## AIR CLEANER ASSEMBLY

Ref. No.	Part No.	Description	No. Used	Ref. No.	Part No.	Description	No. Used
1	95-9896	Case-Air Filter	1	9	KW10185	Bolt	2
2	95-9897	Case-Air Filter	1	10	95-9954	Collar	3
3	95-9898	Element-Air Filter	1	11	95-9955	Collar	4
4	95-9899	Element-Air Filter	1	12	95-9956	Tube	1
5	95-9950	Asm-Element, Air Filter (Incl. Ref. #3 & 4)	1	13	95-9957	Washer	2
6	95-9951	Bracket	1	14	95-9958	Screw-Pan Head	3
7	95-9952	Bracket	1	15	95-9959	Screw-Pan Head	4
8	95-9953	Gasket-Muffler	2	16	33013-00	Nut-Hex.	4
				17	3253-3	Washer-Lock	4

\*Not Illustrated

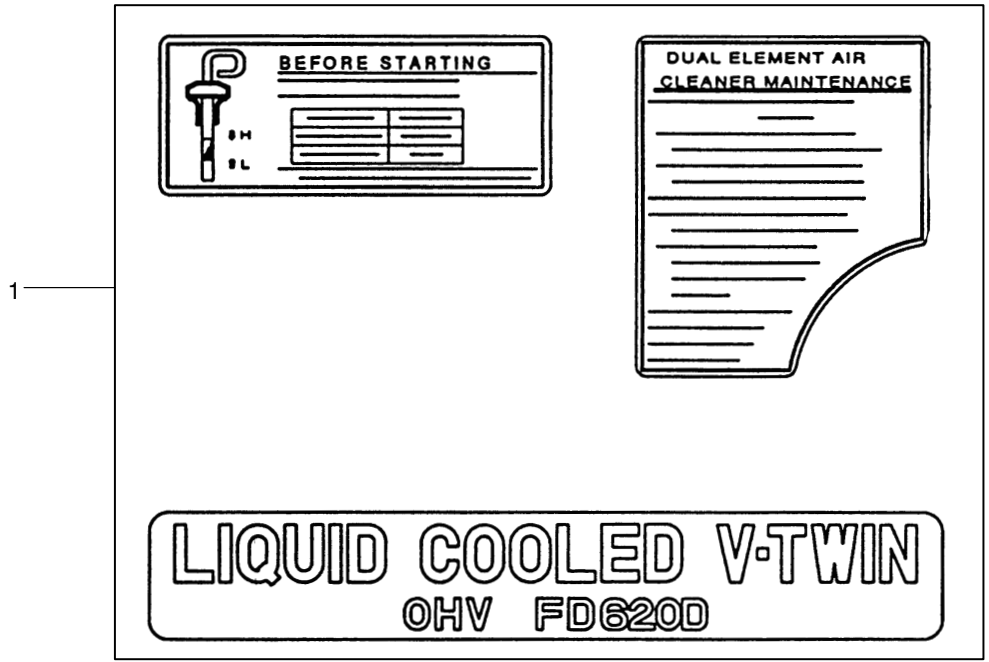


T-2696

## STARTER ASSEMBLY

Ref. No.	Part No.	Description	No. Used
1	95-9961	Asm-Clutch	1
2	KW10048	Holder-Brush	1
3	KW10051	Lever-Shift	1
4	95-9963	Cover	1
5	KW10073	Insulator	1
6	95-9964	Asm-Cover	1
7	95-9965	Asm-Cover	1
8	KW10081	Brush	4
9	KW10082	Spring-Brush	4
10	KW10084	Armature	1
11	95-9966	Asm-Starter, Electric (Incl. Ref. #1-3, 5-10, 12-17 & 19-20)	1

Ref. No.	Part No.	Description	No. Used
12	KW10098	Switch	1
13	95-9967	Stopper	1
14	KW10190	Bolt	2
15	KW10197	Nut	2
16	KW10198	Nut	1
17	KW10219	Ring-Snap	1
18	KW10031	Bolt-Flanged	2
19	95-9968	Nut-Hex.	2
20	KW10143	Washer-Spring	2



T-2697

### DECALS ASSEMBLY

Ref. No.	Part No.	Description	No. Used
1	95-9970	Label-Set	1

Ref. No.	Part No.	Description	No. Used

## PRODUCT CHANGES

In an effort to make improvements available to TORO owners as quickly as possible, minor changes are incorporated into Toro's products from time to time that do not become immediately shown in the Parts Catalog. If such a change has been made in your unit, which is not reflected in your manual, see your TORO Distributor or his Authorized TORO Service Dealer for information and part numbers.

## IDENTIFICATION AND ORDERING

### MODEL AND SERIAL NUMBERS

The Groundsmaster 1000L has two identification numbers; a model number and a serial number. The two numbers are stamped on a plate which is located on the side of the main frame under the left hand footrest. In any correspondence concerning the Groundsmaster 1000L, supply model and serial numbers to assure that correct information and replacement parts are obtained.

To order replacement parts from an Authorized TORO Service Dealer, supply the following information:

1. Model and serial number of the Groundsmaster 1000L.
2. Part number, description, and the quantity of part(s) desired.

**NOTE:** Do not order by reference number if a parts catalog is being used; use the PART NUMBER.

# TABLE OF CONTENTS

Description	Page	Description	Page
Body Assembly .....	1-2	Seat Platform Assembly .....	22
Control Panel Assembly .....	3	Seat Assembly .....	23
Electrical Schematic .....	4	Rear Axle Assembly .....	24-25
Power Steering & Brake Pedal Assembly .....	5	Hydraulic Steering Cylinder No. 76-2070 .....	26
Steering Valve Assembly No. 92-7308 .....	6	Engine Installation Assembly .....	27
Traction Pedal Assembly .....	7	Clutch Assembly No. 95-2516 .....	28
Battery & Engine Mount Assembly .....	8	Crankcase Assembly .....	29
Power Take-Off & Shaft Assembly .....	9	Piston & Crankshaft Assembly .....	30
Hydraulic Lift System Assembly .....	10-11	Valves & Camshaft Assembly .....	31
Lift Valve Assembly No. 63-7960 .....	12	Oil Pump & Filter Assembly .....	32
Radiator Assembly .....	13	Water Pump Assembly .....	33
Fuel Tank and Axle Assembly .....	14	Electrical Components Assembly .....	34
Differential Assembly .....	15-16	Governor Assembly .....	35
Brake Assembly .....	17	Carburetor Assembly .....	36
Transmission & Drive Coupling Assembly .....	18	Air Cleaner Assembly .....	37
Transmission Assembly No. 92-5513 .....	19	Starter Assembly .....	38
Hydraulic Schematic .....	20	Decals Assembly .....	39
Transmission Interlock Assembly .....	21		