



EZ Wheel Plate Kit

Reversible Plate Compactor

Model No. 68076

Form No. 3432-736 Rev A

Installation Instructions

Note: This kit comes with 1 wheel.

Installing the Wheel

1. Place the machine on a level surface and shut off the engine.
2. Assemble the parts as shown in [Figure 1](#).

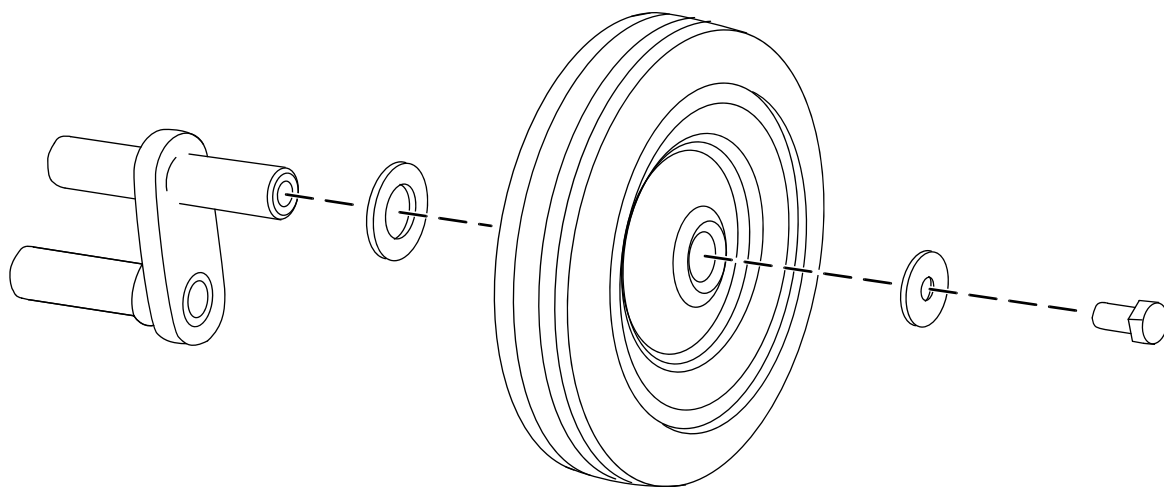


Figure 1

g292026

3. Slide the undercarriage arm into the hole on the compactor frame ([Figure 2](#)).



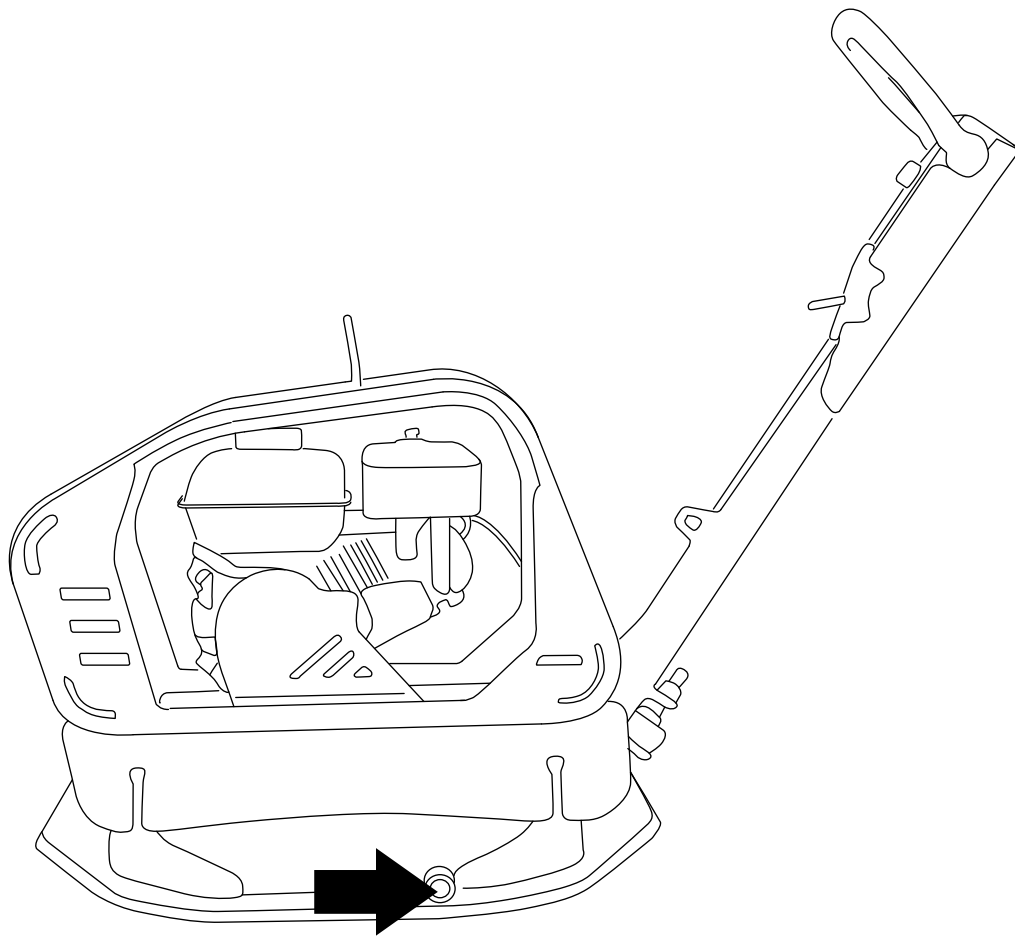


Figure 2

g292864