



48" Vac Bagger

Wheel Horse® 5xi Series Garden Tractor Attachment

Model No. 79448—8900001 and Up

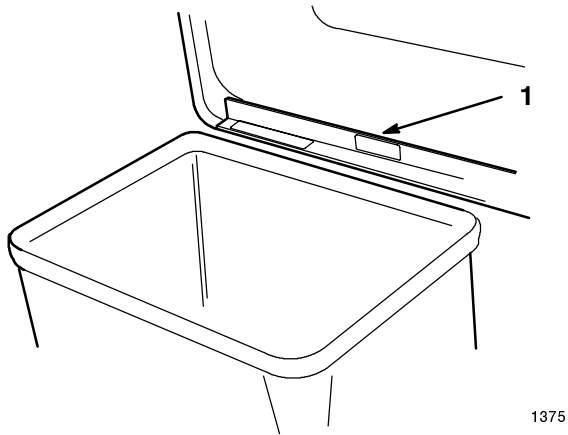
Operator's Manual



Introduction

We want you to be completely satisfied with your new product, so feel free to contact your local Authorized Service Dealer for help with service, genuine replacement parts, or other information you may require.

Whenever you contact your Authorized Service Dealer or the factory, always know the model and serial numbers of your product. These numbers will help the Service Dealer or Service Representative provide exact information about your specific product. You will find the model and serial number plate located in a unique place on the product as shown below.



1. Model and Serial Number Plate

For your convenience, write the product model and serial number in the space below.

Model No: _____
Serial No. _____

The warning system in this manual identifies potential hazards and has special safety messages that help you and others avoid personal injury, even death. DANGER, WARNING and CAUTION are signal words used to identify the level of hazard. However, regardless of the hazard, be extremely careful.

DANGER signals an extreme hazard that will cause serious injury or death if the recommended precautions are not followed.

WARNING signals a hazard that may cause serious injury or death if the recommended precautions are not followed.

CAUTION signals a hazard that may cause minor or moderate injury if the recommended precautions are not followed.

Two other words are also used to highlight information. “Important” calls attention to special mechanical information and “Note” emphasizes general information worthy of special attention.

The left and right side of the machine is determined by sitting on the seat in the normal operator’s position.

Contents

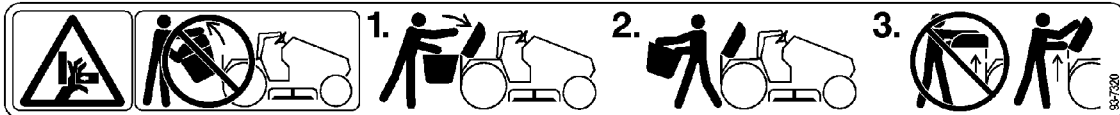
	Page		Page
Safety and Instruction Decals	2	Maintenance	21
Installation	3	Inspecting the Bagger Attachment	21
Loose Parts	3	Inspecting the Mower Blades	21
Preparing the Tractor	4	Caring for the Grass Bags	21
Preparing the Mower	5	Cleaning the Bagger Attachment	21
Assembling the Bagger	7	Storing the Bagger Attachment	22
Installing the Bagger	8		
Removing the Bagger	11		
Operation	18		
Using the Full Bag Tester	18		
Emptying the Grass Bags	18		
Clearing Obstructions			
from the Bagger	19		
Operating and Bagging Tips	19		

Safety and Instruction Decals

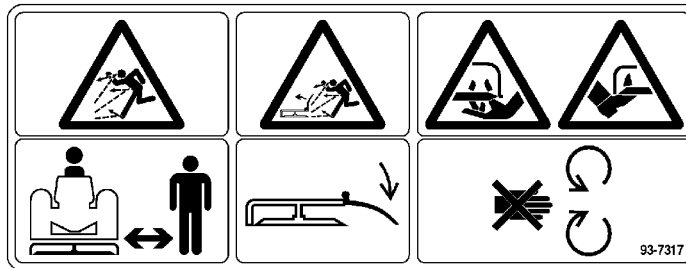


Safety decals and instructions are easily visible to the operator and are located near any area of potential danger. Replace any decal that is damaged or lost.

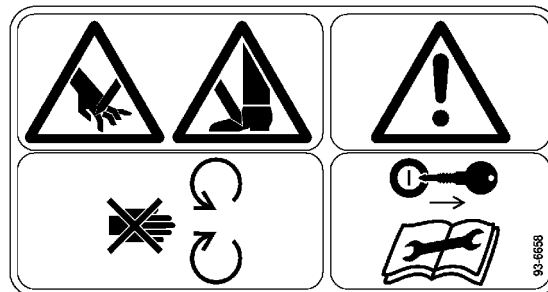
INSIDE EDGE OF BAGGER TOP (PART NO. 93-7320)



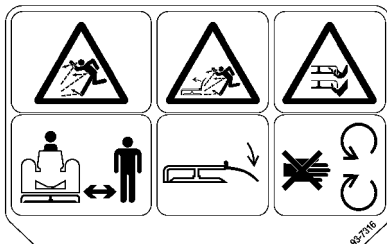
(1) ON TOP OF MOWER (LEFT SIDE) (1) ON MOWER BELT COVER (PART NO. 93-7317)



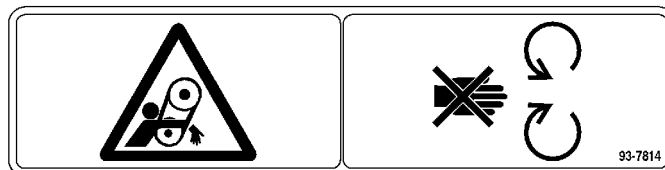
(1) MOLDED INTO BELT SHIELD (1) ON BLOWER HOUSING (PART NO. 93-6658)



MOLDED INTO BELT SHIELD



MOLDED INTO BELT SHIELD



Installation

Loose Parts

Note: Use the chart below to identify parts used for assembly.

DESCRIPTION	QTY.	USE
Bagger hitch	1	Mount bagger hitch
Bolt 3/8-16 x 1" (25 mm)	4	
Nut 3/8"	4	
Counterweight	1	Install counterweight
Bolt 3/8-16 x 2-1/4" (57 mm)	2	
Flat washer 3/8" (10 mm)	4	
Locknut 3/8"	2	
Danger decal	1	
Bolt 3/8-16 x 3/4" (19 mm)	2	Install in open holes when counterweight is removed
Locknut 3/8"	2	
Pivot support	1	Install blower pivot support
Bolt 5/16-18 x 3/4" (19 mm)	1	
Flange nut 5/16"	1	
Washer 3/8" (10 mm)	1	
Cover	1	Assemble the bagger
Indicator rod	1	
Handle	1	
Jam nut 1/4"	1	
Clips	2	
Screw 1/4-20 x 3/4" (19 mm)	2	
Locknut 1/4"	4	
Frame assembly	1	

DESCRIPTION	QTY.	USE
Pulley	1	Install the blower
Belt	1	
Belt cover bracket	1	
Screw 1/4-20 x 3/8" (10 mm)	3	
Blower assembly	1	
Blower belt cover	1	
Screw 1/4-20 x 1/2" (13 mm)	2	
Blower belt cover	1	
Bolt 1/4-20 x 5/8" (16 mm)	2	
Locknut 1/4"	2	
Discharge tube	1	Install the bagger assembly and discharge tube
Quick-attach bracket	1	
Hairpin cotter	2	
Grass bags	2	

Preparing the Tractor

Remove the mower from the tractor. Refer to Mower Operator's Manual for removal instructions.

Park the tractor on a level surface, disengage the blade control (PTO), set the parking brake, stop the engine, and remove the ignition key.

Removing the Transaxle Cover

Remove the transaxle cover from the back of the tractor (Fig. 1).

Note: Save all parts and hardware for use when installing the transaxle cover.

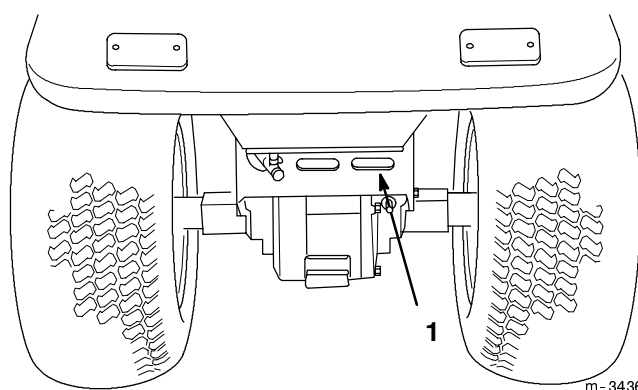


Figure 1

1. Rear transaxle cover

Mount the Vac Bagger Hitch to the Tractor

Install the vac bagger hitch to the tractor with 4 bolts and nuts (Fig. 2).

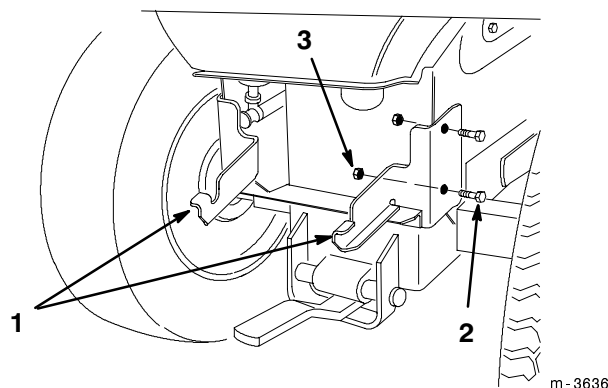


Figure 2

- | | |
|--------------------------|-------------|
| 1. Vac Bagger hitch | 3. Nut 3/8" |
| 2. Bolt 3/8 x 1" (25 mm) | |

Preparing the Mower

Thoroughly clean the mower deck. All debris must be removed to ensure that parts will fit the mower properly.

Removing the Discharge Chute

1. Remove the discharge chute from the mower (Fig. 3).

Note: Save all parts and hardware for use when installing the discharge chute.

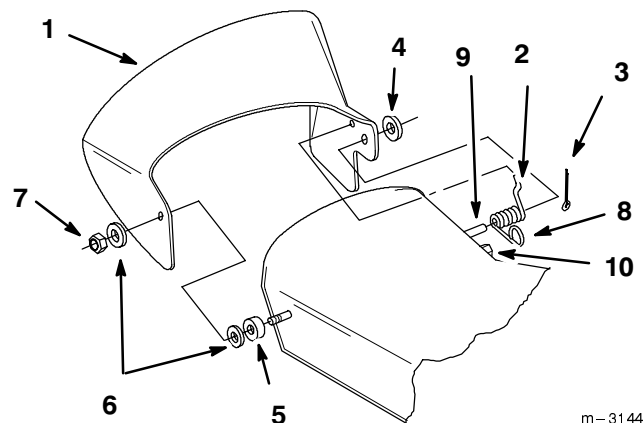


Figure 3

- | | |
|-----------------------------------|---------------------------|
| 1. Discharge chute | 6. Plastic washer |
| 2. Spring | 7. Jam nut 3/8" |
| 3. Cotter pin 1/8" x 3/4" (19 mm) | 8. Loop in spring |
| 4. Washer 1/2" (13 mm) | 9. Post on mower housing |
| 5. Rubber bushing | 10. Stud on mower housing |

Removing the Recycling Baffles

If you have a recycling mower deck, you must remove the right side baffle to use the vac bagger.

1. Remove the lock nuts from the right side baffle (Fig. 4). Slide the baffle out the discharge opening to remove.

Note: Only the right side baffle need be removed for side discharge mowing.

2. Install the previously removed 5/16 x 5/8" (16 mm) bolt and 5/16" locknut in the open hole on the right front of the mower for safety (Fig. 4).

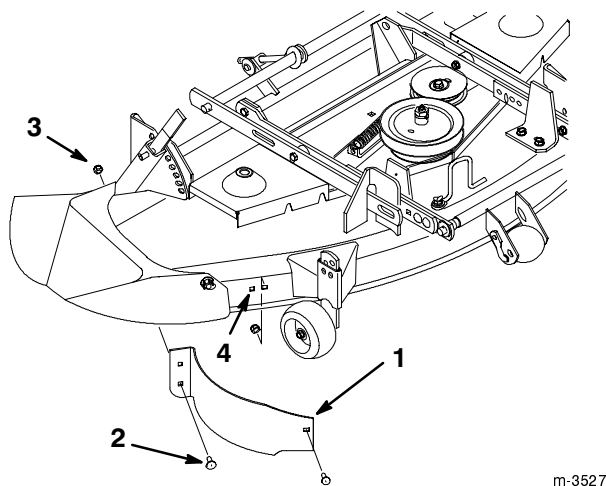


Figure 4

- | | |
|-----------------------------|------------------------------|
| 1. Baffle right side | 3. Lock nut 5/16" |
| 2. Bolt 5/16 x 5/8" (16 mm) | 4. Install bolt in open hole |

⚠ DANGER

POTENTIAL HAZARD

- Open holes in the mower expose you and others to thrown debris.

WHAT CAN HAPPEN

- Debris thrown out of holes in the mower can cause injury.

HOW TO AVOID THE HAZARD

- Never operate mower without hardware mounted in all holes in mower.
- Install hardware in mounting holes when recycle baffle is removed.

Installing the Mower Deck Counterweight

1. Position the mower deck counterweight on the left-hand side of the mower so that it fits snugly against the side of the mower (Fig. 5).
2. Using a punch in the holes of the counterweight, mark the location for drilling (2) 13/32" holes. Remove the counterweight and drill the holes.

3. Secure the counterweight to the top of the mower deck with (2) 3/8 x 2-1/4 (57 mm) bolts, (4) 3/8" (10 mm) flat washers, and (2) 3/8" locknuts.

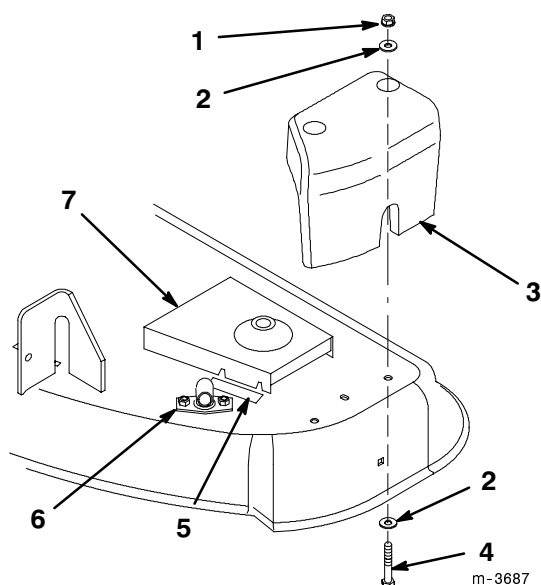


Figure 5

- | | |
|------------------------------|-----------------|
| 1. Locknut 3/8" | 5. Danger decal |
| 2. Flat washer 3/8" (10 mm) | 6. Washout port |
| 3. Counterweight | 7. Belt cover |
| 4. Bolt 3/8 x 2-1/4" (57 mm) | |

4. An extra decal is included with the bagger because the counterweight covers the original decal. Clean the mower deck surface and place this decal on the mower deck, near the counterweight, between the washout port and the belt cover.

Installing the Blower Pivot Support

1. Slide the pivot support over the threaded stud welded to the front of the mower near the discharge opening. Use the inside slot on the pivot support so that the pivot support is closest to the discharge opening (Fig. 6).
2. Align the pivot support parallel with the front curved edge of the mower deck and tight up against the top of the mower. (Fig. 6). Clamp the pivot support in this position.

3. Drill an 11/32" (9 mm) hole in the top of the mower using the pivot support as a guide.
4. Secure the pivot support to the mower with a 5/16 x 3/4" (19 mm) bolt and a 5/16" flange nut (Fig. 6).
5. Place a 3/8" jam nut (removed from the discharge chute) and 3/8" washer snug onto the stud. Do not overtighten the jam nut (Fig. 6).
6. Remove the mower belt cover from the right side pulley (Fig. 6).

Note: Save all parts and hardware for use when removing the blower.

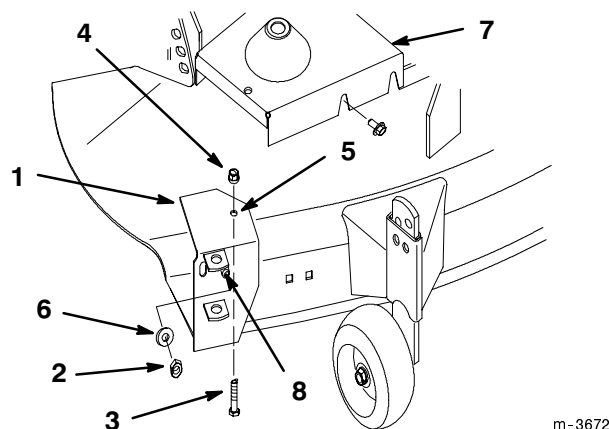


Figure 6

- | | |
|-----------------------------|-----------------------------|
| 1. Pivot support | 5. Drill 11/32" (9 mm) hole |
| 2. Jam nut 3/8" | 6. Washer 3/8" |
| 3. Bolt 5/16 x 3/4" (19 mm) | 7. Mower belt cover |
| 4. Flange nut 5/16" | 8. Threaded stud |

Note: Block the blade with a piece of wood to stop it from turning while you remove the pulley nut. If the blade slips, hold the hex portion of the spindle with a wrench.

Note: When the nut is removed the shaft is free to drop out of the spindle. Be sure to support the spindle and blade from the bottom side.

3. Slide the new double pulley onto the spindle shaft with the word "TOP", stamped into smallest pulley, facing up. Secure it with the previously removed 5/8" lock washer and nut (Fig. 7).
4. Tighten the nut to 50-75 ft. lb. (68-101 Nm).
5. Install the existing mower belt by rotating it onto the bottom pulley (Fig. 7).

Note: Check that mower belt is properly located on the idler and pulleys.

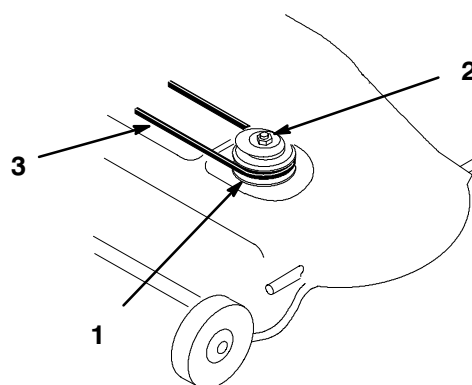


Figure 7

- | | |
|-----------------------------------|-----------------------------|
| 1. New double pulley (note "TOP") | 2. Lock washer and nut 5/8" |
| | 3. Mower belt |

Installing the Blower Pulley onto the Mower

1. Pull on the mower idler assembly to release belt tension and remove the blade drive belt from the right side pulley.
2. Remove the nut and lock washer from the right-hand blade spindle. Remove the single pulley.

Assembling the Bagger

1. Install the "full-bag" indicator rod through the hole in the rubber seal and the slot in the bagger cover (Fig. 8). Mount the full-bag indicator rod against the bagger cover using two clips, 1/4 x 3/4" (19 mm) screws, and 1/4" locknuts (Fig. 8).

2. Screw the jam nut completely onto the indicator rod (Fig. 8). Then screw the handle (Fig. 8) close to the jam nut and position so you can read the decal from the operator's position. Tighten the jam nut up against the handle to lock it in place.

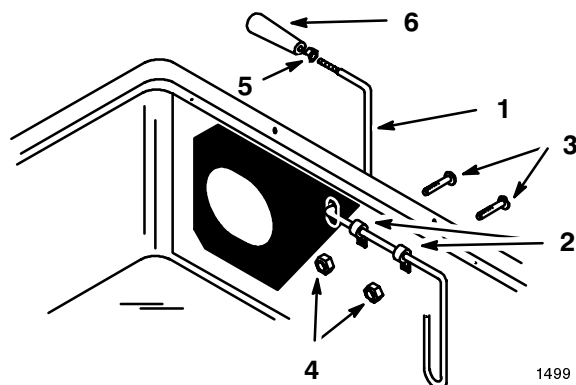


Figure 8

- | | |
|-----------------------------|-----------------|
| 1. Indicator rod | 4. Locknut 1/4" |
| 2. Clips | 5. Jam nut |
| 3. Screw 1/4 x 3/4" (19 mm) | 6. Handle |

3. Assembly the frame assembly to the bagger cover with (2) 1/4" locknuts (Fig. 9).

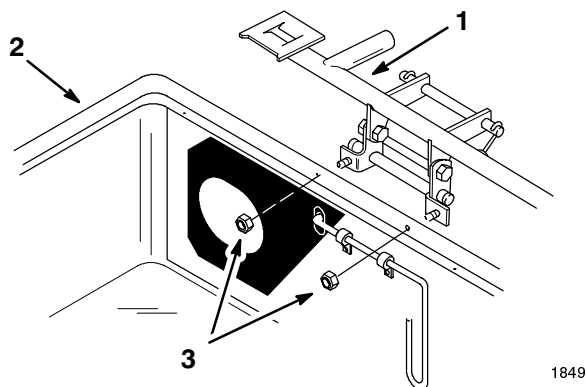


Figure 9

- | | |
|-------------------|-----------------|
| 1. Frame assembly | 3. Locknut 1/4" |
| 2. Bagger cover | |

Installing the Bagger

Installing the Blower

1. Install the mower to the tractor; refer to Mower Operator's Manual.
2. Install the blower by lowering the pivot pin into the pivot support (Fig. 10).

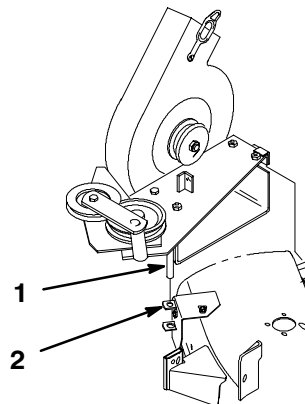


Figure 10

- | | |
|--------------|------------------|
| 1. Pivot pin | 2. Pivot support |
|--------------|------------------|

3. Open the latch and swing the blower out away from the mower, install the blower belt around the idler and blower pulleys as shown (Fig. 11). Install the other end of the belt over the blower drive pulley on the mower spindle.

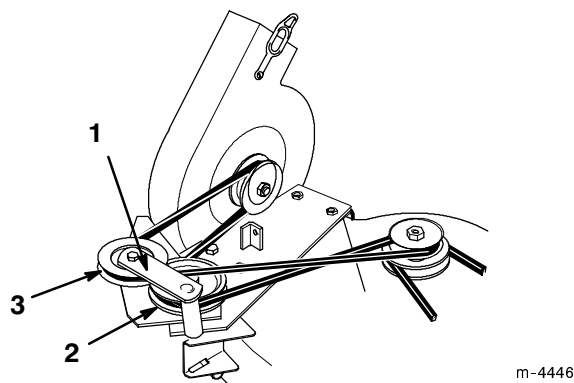


Figure 11

1. Idler pulley bracket and pulley
2. Top (wide) side of belt against bottom pulley
3. "V" side of belt into top pulley groove

4. With the belt installed, swing the blower toward the mower until the blower latch locks over the pin at the back of the mower (Fig. 12).

IMPORTANT: You may have to lift the blower slightly for the latch to close. Ensure that the latch operates *smoothly* and closes *completely*.

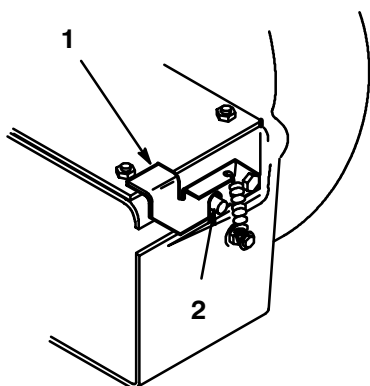


Figure 12

1. Blower latch
2. Pin

Installing the Belt Covers

1. Attach the belt cover bracket to the mower deck with (2) 1/4 x 3/8" (10 mm) screws (Fig. 13).
2. Attach the front of the mower belt cover loosely to the belt cover bracket with (2) 1/4 x 1/2" (13 mm) screws. Attach the back of the mower belt cover loosely to the mower deck with a 1/4 x 3/8" (10 mm) screw (Fig. 13).

Note: Do not tighten the screws as adjustment must be made later.

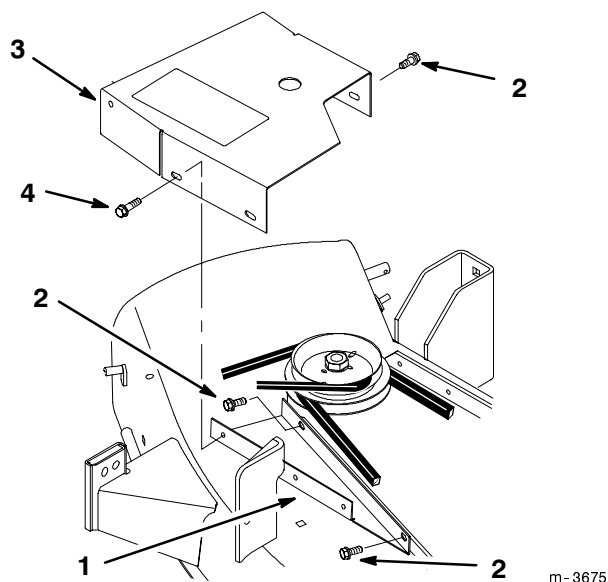


Figure 13

1. Belt cover bracket
2. Screw 1/4 x 3/8" (10 mm)
3. Mower belt cover
4. Screw 1/4 x 1/2" (13 mm)

3. Mount the blower belt cover using (2) 1/4 x 5/8" (16 mm) bolts and (2) 1/4" locknuts (Fig. 14). Tighten the locknuts slightly so light drag is felt on the belt cover when it is tilted upward. The cover must close freely when assembled.

4. Adjust the mower belt cover by sliding it so the blower belt cover just touches the blower, but still opens freely. Tighten the mower belt cover mounting screws.

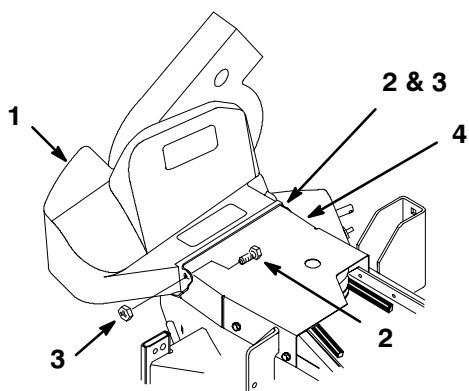


Figure 14

- | | |
|----------------------------|---------------------|
| 1. Blower belt cover | 3. Locknut 1/4" |
| 2. Bolt 1/4 x 5/8" (16 mm) | 4. Mower belt cover |

Installing the Bagger

1. Seat the rod ends of the quick-attach bracket down into the two grooves in the bagger hitch, with the two feet of the bracket resting on the tractor hitch. Secure the bracket to the hitch with (2) hairpin cotters (Fig. 15).

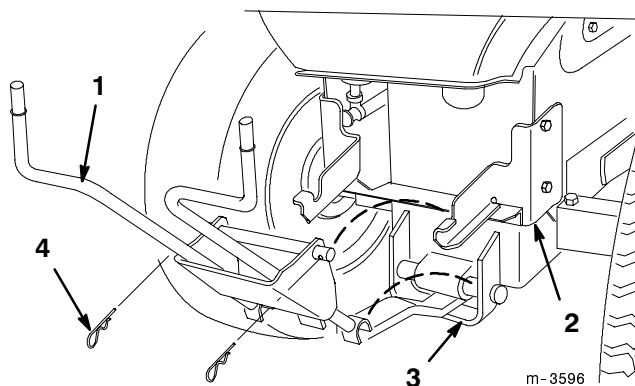


Figure 15

- | | |
|-------------------------|-------------------|
| 1. Quick-attach bracket | 3. Tractor hitch |
| 2. Bagger hitch | 4. Hairpin cotter |

2. Tip the tractor seat forward.
3. Carefully lift the bagger top and slide it onto the quick-attach bracket (Fig. 16). The bagger top is easier to install if two people work together.

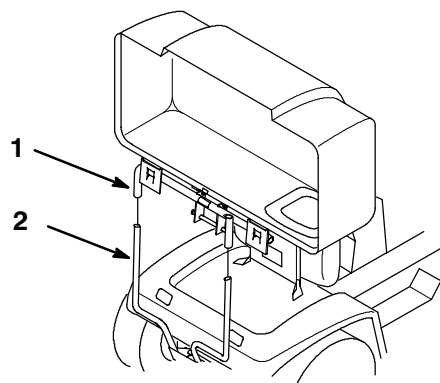


Figure 16

- | | |
|---------------|-------------------------|
| 1. Bagger top | 2. Quick-attach bracket |
|---------------|-------------------------|

CAUTION

POTENTIAL HAZARD

- The hinge frame on the bagger top is spring-loaded.

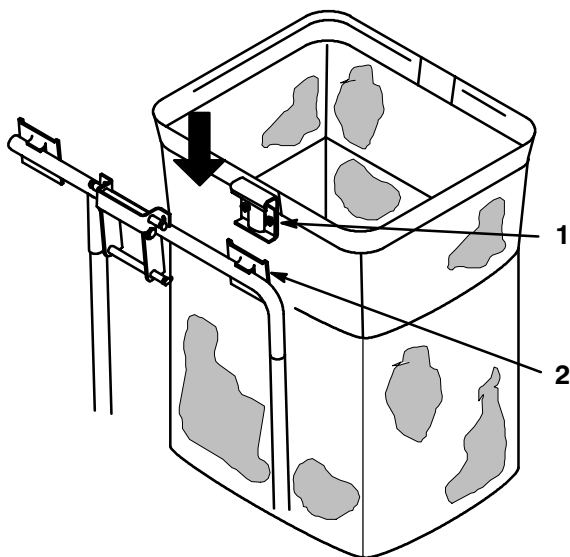
WHAT CAN HAPPEN

- If you remove the bagger top when it is closed (in the down position), the top may suddenly fly open and you or someone else may be bruised, pinched, or injured in another way.

HOW TO AVOID THE HAZARD

- Always open (raise) the bagger top before you remove or install it on the quick-attach bracket.

4. Install the bags by sliding the bag frame hooks onto the retaining brackets (Fig. 17).

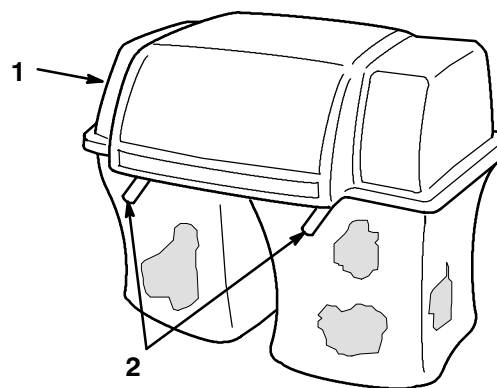


1373

Figure 17

1. Bag frame hook
2. Retaining bracket

5. Lower the bagger top onto the bags. Then push down on both bag retainer handles until they lock on the bag frame (Fig. 18).



1376

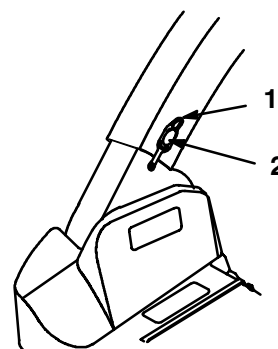
Figure 18

1. Bagger top
2. Bag retainer handles

6. Move the tractor seat to its normal position.

Installing the Discharge Tube

1. Insert the upper end of the discharge tube into the bagger top. Slide the lower end of the discharge tube over the blower discharge opening (Fig. 19).
2. Hook the rubber latch onto the knob (Fig. 19).



1847

Figure 19

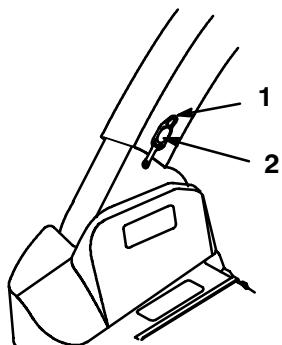
1. Rubber latch
2. Knob

Removing the Bagger

Removing the Discharge Tube

1. Unhook the rubber latch from the knob (Fig. 20).

- Slide the lower end of the discharge tube off the blower discharge opening (Fig. 20). Pull the upper end of the discharge tube out of the bagger top.



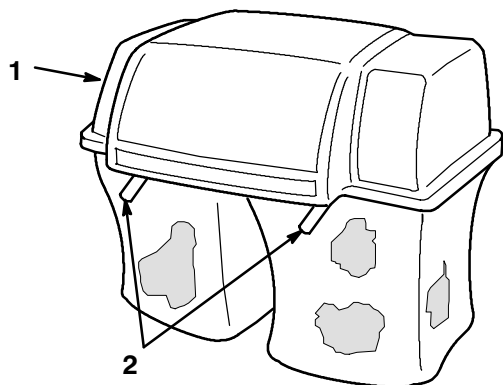
1847

Figure 20

- Rubber latch
- Knob

Removing the Bagger

- Tip the tractor seat forward.
- Raise the bagger top and remove the grass bags from the bag frame (Fig. 21).

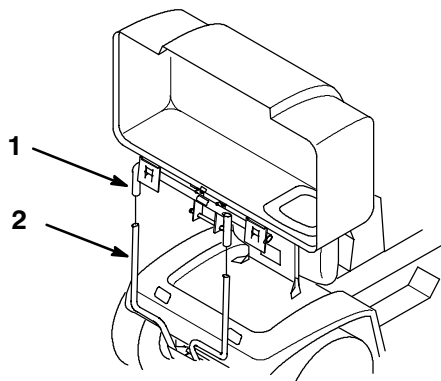


1376

Figure 21

- Bagger top
- Bag retainer handles

- Carefully lift the bagger top and slide off the quick-attach bracket (Fig. 22). The bagger top is easier to remove if two people work together.



m-1845

Figure 22

- Bagger top
- Quick-attach bracket

CAUTION

POTENTIAL HAZARD

- The hinge frame on the bagger top is spring-loaded.

WHAT CAN HAPPEN

- If you remove the bagger top when it is closed (in the down position), the top may suddenly fly open and you or someone else may be bruised, pinched, or injured in another way.

HOW TO AVOID THE HAZARD

- Always open (raise) the bagger top before you remove or install it on the quick-attach bracket.

- Remove the hairpin cotters from the holes at the bottom of the quick-attach bracket (Fig. 23).
- Lift the quick-attach bracket from the hitch (Fig. 23).

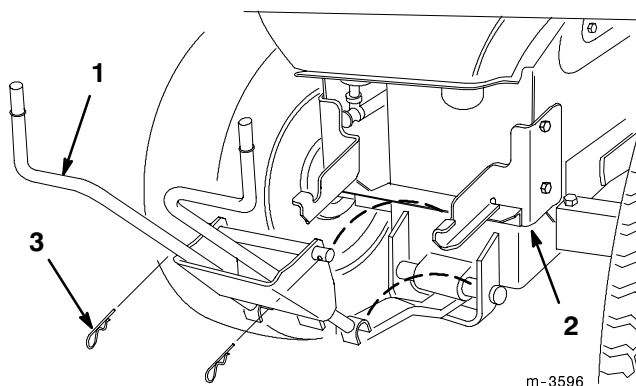


Figure 23

- | | |
|-------------------------|-------------------|
| 1. Quick-attach bracket | 3. Hairpin cotter |
| 2. Bagger hitch | |

6. Move the tractor seat to its normal position.

Removing the Belt Covers

1. Remove the blower belt cover by removing (2) 1/4" locknuts and 1/4 x 5/8" (16 mm) bolts (Fig. 24).

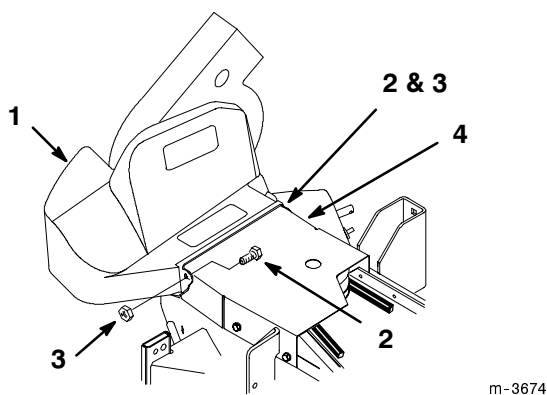


Figure 24

- | | |
|----------------------------|---------------------|
| 1. Blower belt cover | 3. Locknut 1/4" |
| 2. Bolt 1/4 x 5/8" (16 mm) | 4. Mower belt cover |

2. Remove the mower belt cover and belt cover bracket from the right side pulley (Fig 25).

Note: Save all parts and hardware for use when installing blower.

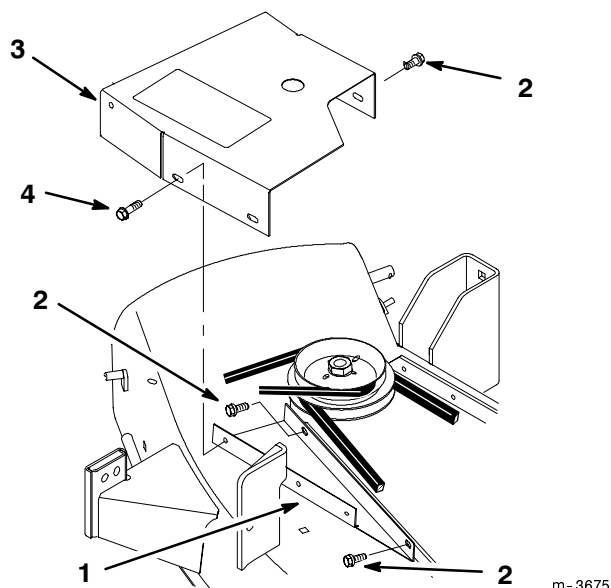


Figure 25

- | | |
|-----------------------------|-----------------------------|
| 1. Belt cover bracket | 3. Mower belt cover |
| 2. Screw 1/4 x 3/8" (10 mm) | 4. Screw 1/4 x 1/2" (13 mm) |

Removing the Blower from the Mower

1. Open the latch and swing the blower out away from the mower, remove the blower belt from the mower pulley (Fig. 26).

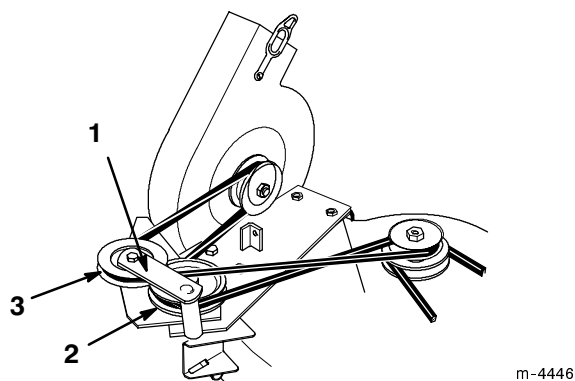


Figure 26

- | | |
|--|--|
| 1. Idler pulley bracket and pulley | 3. "V" side of belt into top pulley groove |
| 2. Top (wide) side of belt against bottom pulley | |

2. Remove the blower by lifting the pivot pin out of the pivot support (Fig. 27).

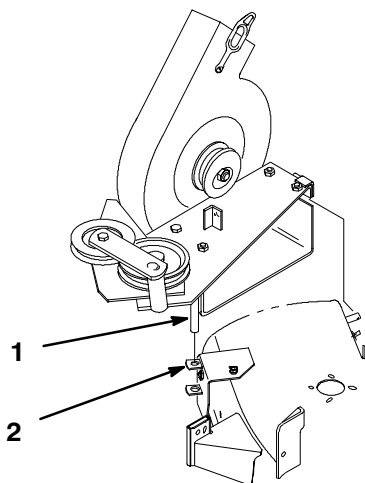


Figure 27

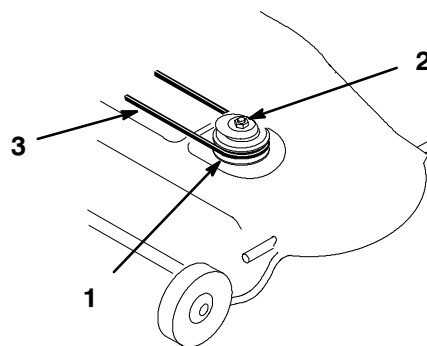
1. Pivot pin
2. Pivot support

Removing the Blower Pulley from the Mower

1. Remove the mower from the tractor; refer to Mower Operator's Manual.
2. Pull on mower idler assembly to release belt tension and remove blade drive belt from right side pulley (Fig. 28).
3. Remove nut and lock washer from right hand blade spindle (Fig. 28). Remove double pulley.

Note: Block blade with a piece of wood to stop it from turning while you remove the pulley nut. If blade slips hold hex portion of spindle with a wrench.

Note: When nut is removed the shaft is free to drop out of the spindle. Be sure to support the spindle and blade from the bottom side.



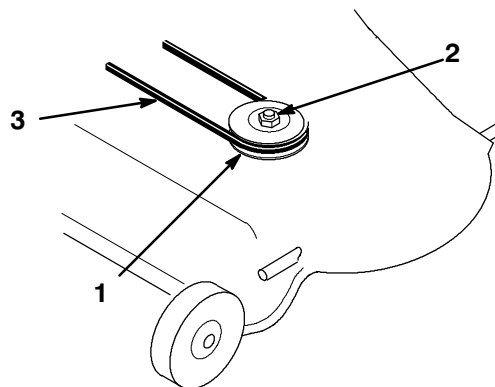
m-3734

Figure 28

1. Double pulley
2. Lock washer and nut
3. Blade drive belt

4. Slide the single pulley onto the spindle. Secure with previously removed lock washer and nut (Fig. 29).
5. Tighten the nut to 50-75 ft. lb. (68-101 Nm).
6. Install the existing mower belt by rotating it onto the pulley (Fig. 29).

Note: Check that mower belt is properly located on idler and pulleys.



m-3301

Figure 29

1. Single groove pulley
2. Lock washer and nut
3. Blade drive belt

Removing the Blower Pivot Support

1. Remove the pivot support and pivot bracket from the mower (Fig. 30).

Note: Save all parts and hardware for use when installing blower.

2. Install the previously removed hardware in the open hole of the mower for safety (Fig. 30).
3. Install the mower belt cover using existing hardware (Fig. 30).

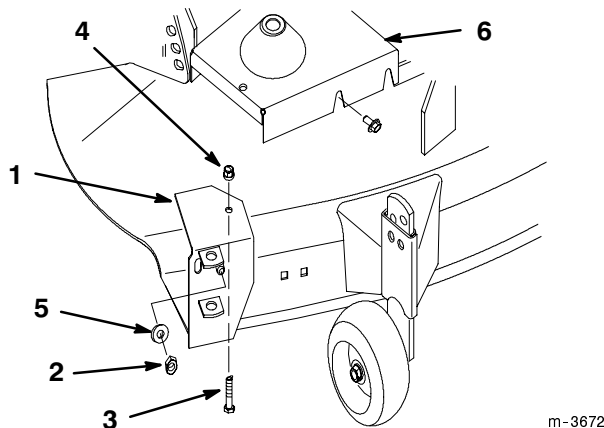


Figure 30

- | | |
|-----------------------------|---------------------|
| 1. Pivot support | 4. Flange nut 5/16" |
| 2. Jam nut 3/8" | 5. Washer 3/8" |
| 3. Bolt 5/16 x 3/4" (19 mm) | 6. Mower belt cover |

Note: Save all parts and hardware for use when installing the blower.

2. Install (2) 3/8 x 3/4" (19 mm) bolts and (2) 3/8" locknuts in the open holes of the mower for safety (Fig. 31).

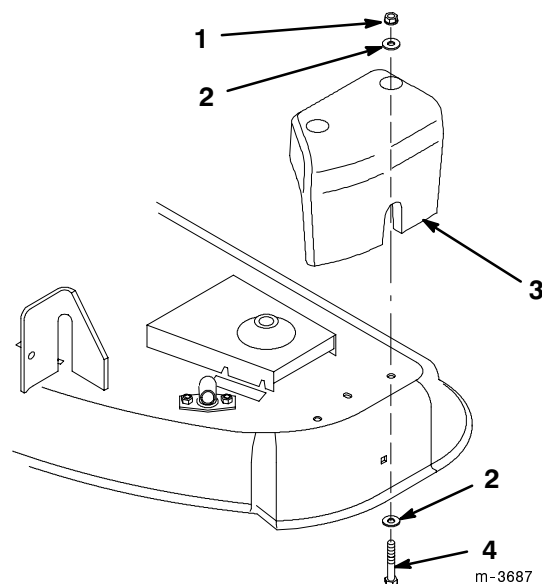


Figure 31

- | | |
|-----------------------------|------------------------------|
| 1. Locknut 3/8" | 3. Counterweight |
| 2. Flat washer 3/8" (10 mm) | 4. Bolt 3/8 x 2-1/4" (57 mm) |

! DANGER

POTENTIAL HAZARD

- Open holes in the mower expose you and others to thrown debris.

WHAT CAN HAPPEN

- Debris thrown out of holes in the mower can cause injury.

HOW TO AVOID THE HAZARD

- Never operate mower without hardware mounted in all holes in mower.
- Install hardware in mounting holes when recycle baffle is removed.

Removing the Mower Deck Counterweight

1. Remove the counterweight from the left-hand side of the mower (Fig. 31).

! DANGER

POTENTIAL HAZARD

- Open holes in the mower expose you and others to thrown debris.

WHAT CAN HAPPEN

- Debris thrown out of holes in the mower can cause injury.

HOW TO AVOID THE HAZARD

- Never operate mower without hardware mounted in all holes in mower.
- Install hardware in mounting holes when recycle baffle is removed.

Installing the Recycling Baffles

If you have a recycling mower deck, you must install the recycling baffles to use the mower as a Recycler®.

1. Thoroughly clean the mower.
2. Remove the locknut and bolt from the mower (Fig. 32). Slide the baffle into the discharge opening and into the mower so the pin goes through the baffle.
3. Secure with previously removed 5/16-5/8" (16 mm) bolts and 5/16" locknuts (Fig. 32).

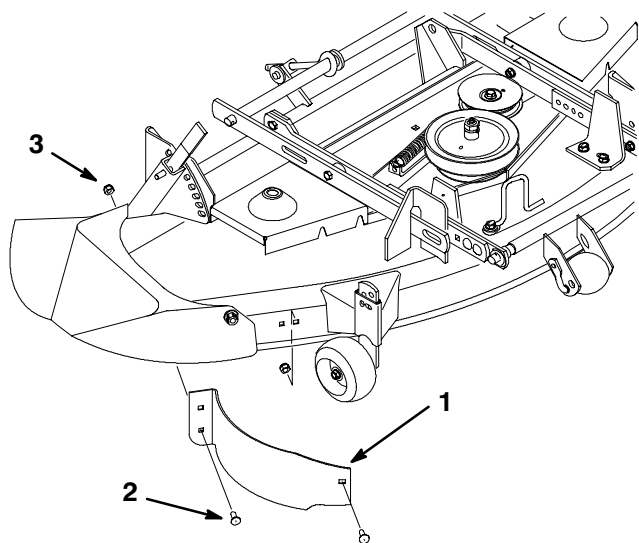


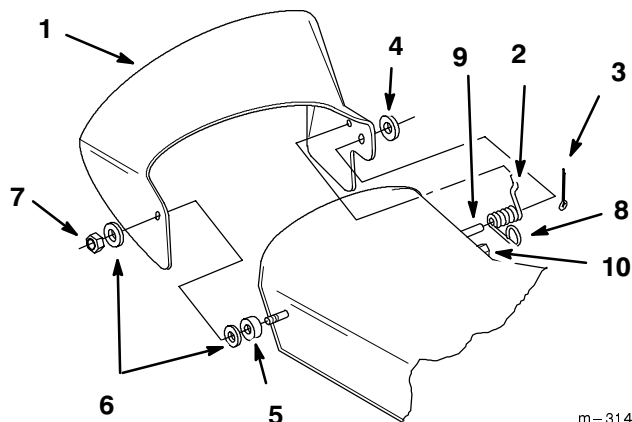
Figure 32

- | | |
|-----------------------------|------------------|
| 1. Baffle right side | 3. Locknut 5/16" |
| 2. Bolt 5/16 x 5/8" (16 mm) | |

m-3527

6. Place the discharge chute over the stud and secure it with a second nylon washer and 3/8" jam nut (Fig. 33). The jam nut must be tightened flush with the end of the stud.

IMPORTANT: The discharge chute must be spring loaded in the down position. Lift the chute up to test that it snaps to the full down position.



m-3144

Figure 33

- | | |
|----------------------------|---------------------------|
| 1. Discharge chute | 6. Plastic washer |
| 2. Spring | 7. Jam nut 3/8" |
| 3. Cotter pin 3/4" (19 mm) | 8. Loop in spring |
| 4. Washer 1/2" (13 mm) | 9. Post on mower housing |
| 5. Rubber bushing | 10. Stud on mower housing |

Installing the Discharge Chute

1. Locate the items shown (Fig. 33).
2. Place the short end of the spring into the small hole in the discharge chute.
3. Position the spring and discharge chute over the post on the rear of the deck and secure them with a 1/2" (13 mm) washer and a 3/4" (19 mm) cotter pin (Fig. 33).
4. Make sure the loop in the spring slides over the stud on the mower housing.
5. Slide the rubber bushing and nylon washer over the stud at the front of the mower.

**DANGER****POTENTIAL HAZARD**

- Without the discharge chute, mulch baffle, or complete grass catcher assembly mounted in place, you and others are exposed to blade contact and thrown debris.

WHAT CAN HAPPEN

- Contact with rotating mower blade(s) and thrown debris will cause injury or death.

HOW TO AVOID THE HAZARD

- **NEVER** remove the discharge chute from the mower because the discharge chute routes material down toward the turf. If the discharge chute is ever damaged, replace it immediately. Never put your hands or feet under the mower.
- Never try to clear the discharge area or mower blades unless you disengage the power take off (PTO), stop the engine, remove the ignition key, and pull the wire(s) off the spark plug(s).

7. Install mower onto tractor. Refer to Mower Operator's Manual.

Operation

CAUTION

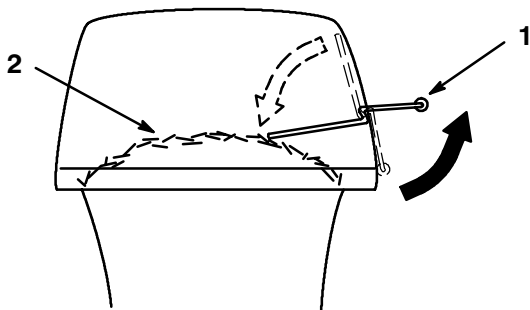
To Avoid Personal Injury:

- **Become familiar with all operating and safety instructions in the operator's manual for your tractor and mower before using this attachment.**
- **Never remove the discharge tube, bags, bagger top, or the blower while the engine is running.**
- **Always shut the engine off before clearing an obstruction from the vac bagging system.**
- **Never do maintenance or repairs while the engine is running.**

Using the Full Bag Tester

As grass is cut and blown into the bags, the left bag fills first, then the right bag. If you overfill the bags, grass will eventually plug the discharge tube or elbow.

1. Stop the tractor and apply the brake.
2. To check if both bags are full, periodically raise the full bag tester handle (Fig. 34). If you feel resistance as you raise the handle, the bags must be emptied because they are full (Fig. 34).



1381

Figure 34

1 Full bag tester handle

2 Bag full

Emptying the Grass Bags

Grass bags can weigh up to 90 lb (41kg) when full. Be careful when lifting or handling a grass bag that is full. To empty the grass bags:

1. Stop the tractor, set the parking brake, lower the attachment lift, disengage the power take off (PTO), stop the engine, and remove the ignition key.
2. Tip the tractor seat forward.
3. Pull up on both bag retainer handles until they unlock from the bag frame (Fig. 18). Now open (raise) the bagger top.
4. Compress debris into the bags. With both hands, lift up on the bag and unhook it from the retaining bracket (Fig. 17). Empty the bag. Repeat for the other bag.
5. Install the bags by sliding the bag frame hooks onto the retaining brackets (Fig. 17).
6. Lower the bagger top onto the bags. Then push down on both bag retainer handles until they lock on the bag frame (Fig. 18).
7. Move the tractor seat to its normal position.

Clearing Obstructions from the Bagger

1. Stop the tractor, set the parking brake, lower the attachment lift, stop the engine, and remove the ignition key.
2. Check the grass bags and empty them if they are full.
3. Remove and separate the discharge tube and blower from the bagger top and mower. Using a stick or similar object, carefully remove and clear the obstruction from the mower, discharge tube, blower, and the bagger top.
4. After you remove the obstruction, install the complete bagger system and resume operation.

Operating and Bagging Tips

Size

Remember that the tractor is longer and wider with this attachment installed. By turning too sharply in confined places you may damage the attachment.

Trimming

Always trim with the left side of the mower. Do not trim with the right side of the mower because you could damage the bagger's blower and discharge tube.

Cutting Height

Do not set the mower cutting height too low because long grass surrounding the mower can prevent air from getting under the mower and entering the bagging system. If enough air doesn't get under the mower, the bagging system will plug.

Cutting Frequency

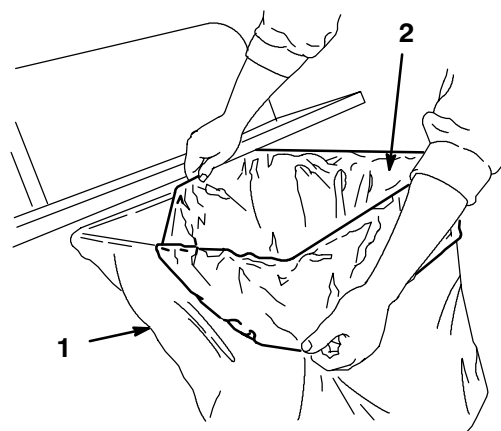
Cut the grass often, especially when it grows rapidly. You will have to cut your grass twice if it gets excessively long (refer to Bagging Long Grass, page 20).

Cutting Technique

For best lawn appearance, be sure to slightly overlap the mower into the previously cut area. This helps reduce the load on the engine and reduces the chance of plugging the blower and discharge tube.

Using Bags

Although not required, bags may be inserted into each cloth grass bag as a liner to collect clippings and make disposal more convenient (Fig. 35). If you use a bag liner, remove the filled grass bag and close the top of the liner. Then pull the liner out the grass bag or turn the bag upside down while holding the handle on the bottom of the grass bag (allows liner to slide out).



1378

Figure 35

1 Cloth grass bag

2 Bag (liner)

Bagging Speed

Most often you will bag with the tractor throttle in the FAST position and drive at a normal ground speed. However, in extremely dry and dusty grass, you may

want to slightly reduce throttle speed and increase ground speed of the tractor. The bagging system may plug if you drive too fast and the engine speed gets too slow. On hills it may be necessary to slow the tractor's ground speed. This helps maintain engine speed and bagging efficiency. Mow down hill whenever possible.

CAUTION

POTENTIAL HAZARD

- **As the grass bags fill, extra weight is added to the back of the tractor.**

WHAT CAN HAPPEN

- **If you stop and start suddenly on hills, you may lose steering control or the tractor may tip.**

HOW TO AVOID THE HAZARD

- **Do not start or stop suddenly when going uphill or downhill. Avoid uphill starts.**
- **If you do stop the tractor when going uphill, disengage the PTO (stop the mower blades). Then back down the hill using slow reverse speed.**
- **Do not change speeds or stop on slopes.**

Signs of Plugging

As you are bagging, a small amount of grass clippings normally blow out the front of the mower. An excessive amount of clipping blow-out indicates that the bags are full or the system is plugged.

Bagging Long Grass

Excessively long grass is heavy and may not be propelled completely into the grass bags. If this happens, the discharge tube and blower may plug. To avoid plugging the bagging system, mow the grass at a high height-of-cut, then lower the mower to your normal cutting height and repeat the bagging process.

Bagging Wet Grass

Always try to cut grass when it is dry because your lawn will have a neat appearance. If you must cut wet grass, use the conventional side discharge feature of the mower. Several hours later, when the clippings are dry, install the complete bagger attachment and vacuum up the grass clippings.

Maintenance

Inspecting the Bagger Attachment

Inspect the bagger attachment after the first ten hours of operation, and monthly thereafter.

1. Check the blower, discharge tube and the bagger top. Replace these parts if they are cracked or broken.
2. Tighten all nuts bolts and screws.
3. Inspect the grass bags for deterioration.

DANGER

POTENTIAL HAZARD

- The grass bag material may tear, wear, and eventually deteriorate.

WHAT CAN HAPPEN

- You or bystanders could be severely injured by flying debris or thrown objects that may pass through worn or deteriorated grass bags.

HOW TO AVOID THE HAZARD

- Frequently check the grass bags for holes, rips, wear, and other deterioration. Do not wash the grass bags. If the bag has deteriorated, install new grass bags supplied by the manufacturer of this bagger attachment.

Inspecting the Mower Blades

1. Inspect the mower blades regularly and whenever a blade strikes a foreign object.
2. If blades are badly worn or damaged, install new blades. Refer to your tractor or mower operator's manual for complete blade maintenance.

Caring for the Grass Bags

1. Washing the grass bags is not recommended.
2. To prevent rapid deterioration of bag material, store the bags so they dry completely after each use.

CAUTION

POTENTIAL HAZARD

- If you store grass clippings in the bagger attachment cloth grass bags, under the right conditions, spontaneous combustion (a fire-generating process that occurs without an external source of ignition) could occur.

WHAT CAN HAPPEN

- If a fire occurs, property could be damaged and/or someone could be injured.

HOW TO AVOID THE HAZARD

- The cloth grass bags are not storage containers. Never store grass clippings and debris in the grass bags.

Cleaning the Bagger Attachment

1. After each use, remove and wash the inside and outside of the bagger top, discharge tube, blower, and the underside of the mower, using water sprayed from a garden hose. Use a mild automotive detergent to remove stubborn dirt.
2. Make sure you remove matted grass from all parts.
3. After washing let all parts dry thoroughly. Do not wash the grass bags.

Storing the Bagger Attachment

1. Clean the bagger attachment (refer to Cleaning the Bagger Attachment, page 21).
2. Inspect the bagger attachment for damage (refer to Inspecting the Bagger Attachment, page 21).
3. Make sure the grass bags are empty and thoroughly dry.
4. Store the bagger in a clean, dry place, out of direct sunlight. This protects the plastic parts and extends the life of the bagger. If you must store the bagger outside, cover it with a weatherproof cover.