



Front Scraper Kit

18in and 21in DPA Greensmaster® Cutting Reel

Model No. 120-9615

Model No. 120-9616

Model No. 120-9617

Model No. 139-7411

Installation Instructions

Installation

Loose Parts

Use the chart below to verify that all parts have been shipped.

Procedure	Description	Qty.	Use
1	No parts required	–	Prepare the machine.
2	Scraper Bolt Nut Clamp	1 2 2 2	Install the scraper.

1

Preparing the Machine

No Parts Required

Procedure

Refer to your cutting unit *Operator's Manual* for instructions to prepare the machine and cutting unit for installation.

2

Installing the Scraper

Parts needed for this procedure:

1	Scraper
2	Bolt
2	Nut
2	Clamp

Removing the Roller

1. Remove the plow bolt, washer, and nut securing one of the height-of-cut arms to the cutting unit, side plate ([Figure 1](#)).



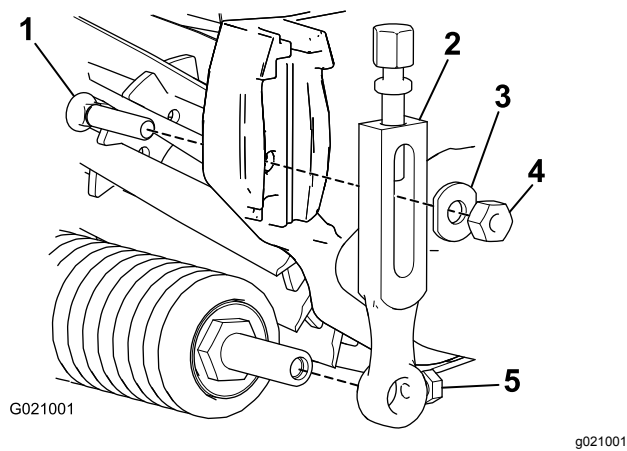


Figure 1

- | | |
|----------------------|--------------------------|
| 1. Plow bolt | 4. Nut |
| 2. Height-of-cut arm | 5. Roller mounting screw |
| 3. Washer | |

6. Center the scraper on the roller.
7. Move the scraper in or out until the desired roller clearance is attained. The scraper must not contact the roller. Make sure the scraper is parallel to the roller.
8. Tighten the bolts and nuts securing the clamps to the roller shaft. Torque them to 11 N-m (96 in-lb).
9. Center the roller and scraper between the height-of-cut arms.
10. Rotate the scraper down until the desired turf contact is attained.
11. Tighten the roller mounting screws.

2. Loosen the roller mounting screws in the height-of-cut arms (Figure 1).
3. Slide the height-of-cut arm off the roller shaft (Figure 1).
4. Slide the roller shaft out of the height-of-cut arm on the opposite end of the cutting unit.

Installing the Scraper

1. Insert a shaft clamp onto each end of the roller shaft (Figure 2).

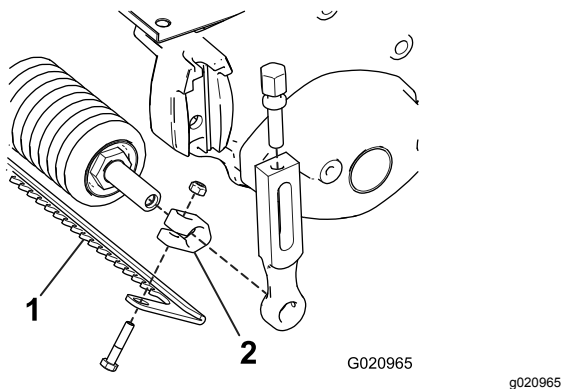


Figure 2

- | | |
|------------|----------------|
| 1. Scraper | 2. Shaft clamp |
|------------|----------------|

2. Loosely install the roller to the cutting unit with the height-of-cut arm and fasteners previously removed.
3. Adjust to the desired height of cut and tighten height-of-cut arm mounting fasteners.
4. Position the scraper between the front roller and the cutting unit as shown in Figure 2.
5. Loosely install the scraper to each clamp with a bolt and nut (Figure 2). Do not tighten.