



# Seat Kit

## Greensmaster® 3300/3400 Series TriFlex® Traction Unit

Model No. 04718

Model No. 04719

### Installation Instructions

## Loose Parts

Use the chart below to verify that all parts have been shipped.

Procedure	Description	Qty.	Use
<b>1</b>	No parts required	–	Prepare the machine.
<b>2</b>	Seat assembly Flange nut Short wire harness	1 4 1	Install the new seat.

# 1

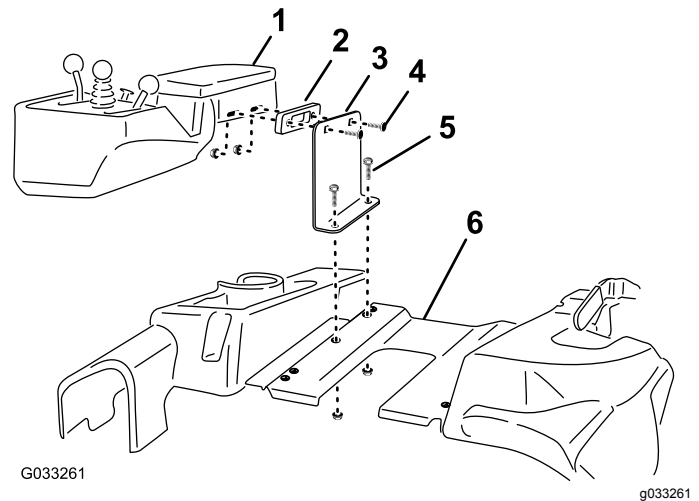
## Preparing the Machine

### No Parts Required

### Procedure

- If you are installing this kit on a new diesel traction unit without a seat, remove the 4 carriage bolts and 4 nuts securing the shipping bracket to the seat pan and armrest ([Figure 1](#)). Discard the shipping bracket and seat pan fasteners. Save the armrest fasteners and spacer.

**Important:** Ensure that you support the armrest after removing it so that it does not crimp or hang by the cables and wires.



**Figure 1**

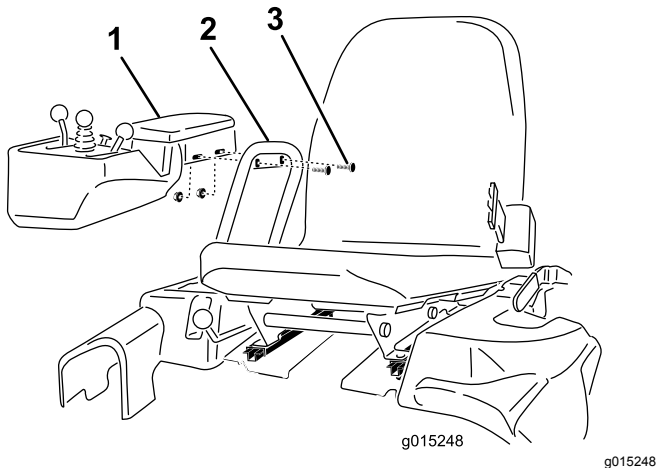
- |                               |                            |
|-------------------------------|----------------------------|
| 1. Armrest                    | 4. Carriage bolt (save)    |
| 2. Spacer                     | 5. Carriage bolt (discard) |
| 3. Shipping bracket (discard) | 6. Seat pan                |



- If you are installing a premium seat on a traction unit with a standard seat installed, complete the following procedure:

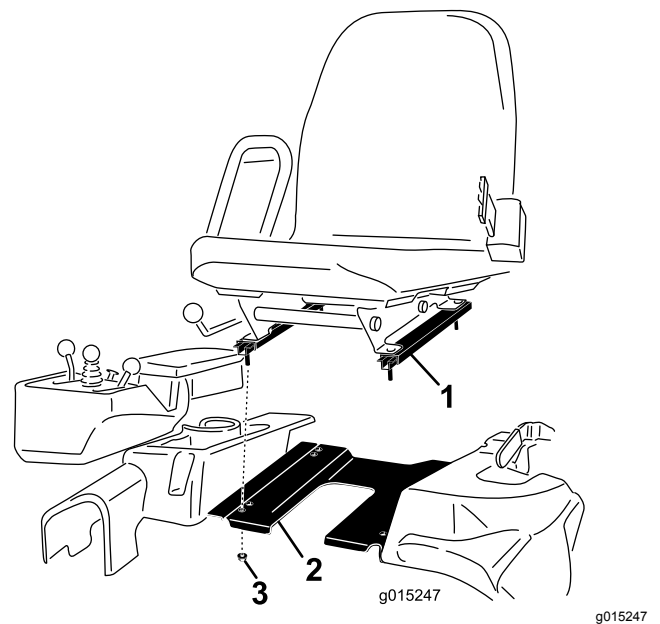
1. Park the machine on level ground, shut off the engine, engage the parking brake, and remove the ignition key.
2. Remove the 2 carriage bolts and nuts securing the armrest to the seat ([Figure 2](#)). Save the fasteners.

**Important:** Ensure that you support the armrest after removing it so that it does not crimp or hang by the cables and wires.



**Figure 2**

1. Armrest
2. Armrest bracket on the seat
3. Carriage bolt



**Figure 3**

1. Seat rail
2. Seat pan
3. Flange nut (discard)

3. Remove and discard the 4 nuts securing the seat rails to the seat pan and remove the seat ([Figure 3](#)).

# 2

## Installing the New Seat

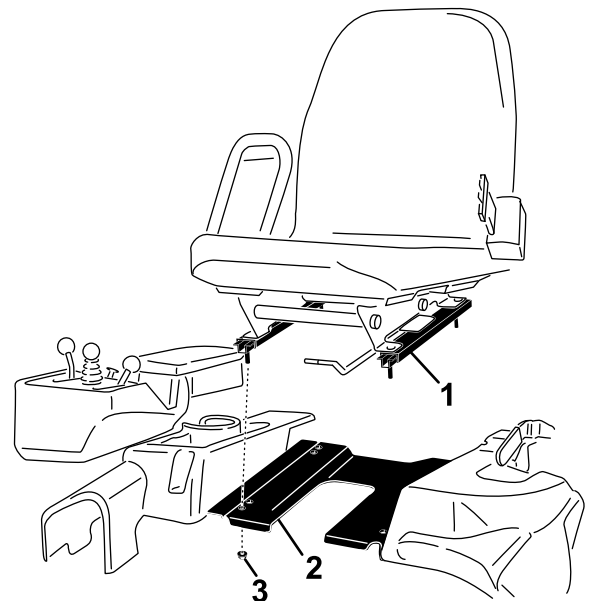
Parts needed for this procedure:

1	Seat assembly
4	Flange nut
1	Short wire harness

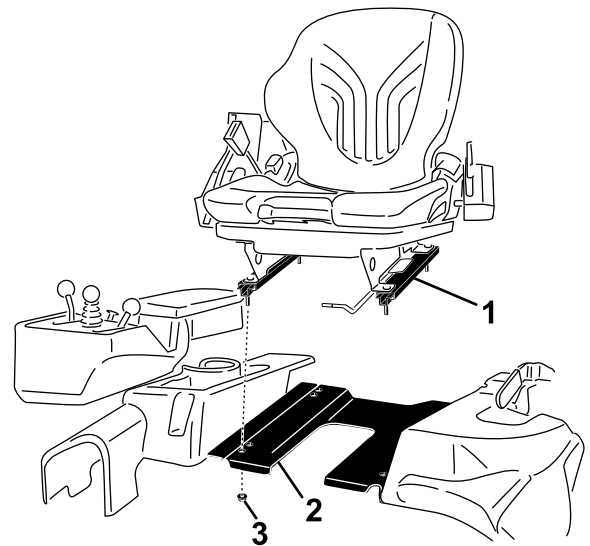
### Procedure

1. Install the 4 studs on the seat rails into the seat pan and secure them using 4 flange nuts (Figure 4).

**Note:** There are 2 installation locations in the seat pan. For tall operators, install the seat into the rear holes. For shorter operators, install the seat into the front holes.



g195601



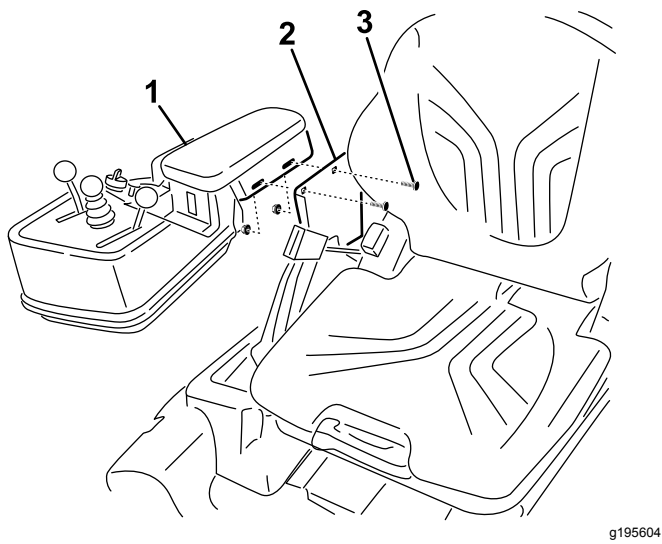
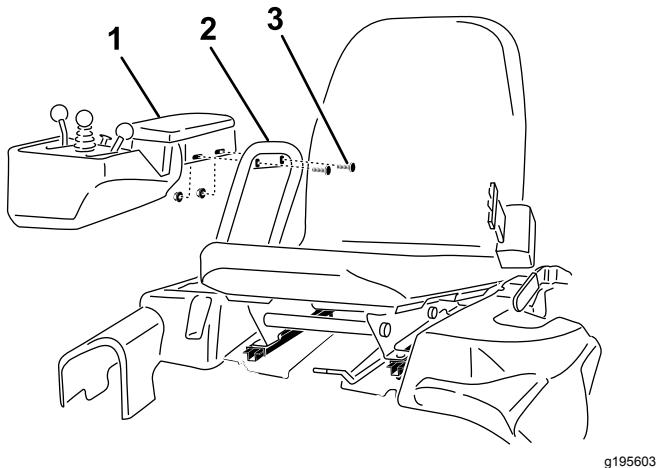
g195602

Figure 4

1. Seat rail
2. Seat pan
3. Flange nut

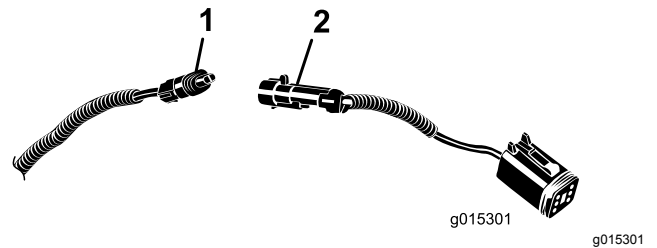
2. Install the armrest to the seat using the 2 carriage bolts and flange nuts that you removed previously ([Figure 5](#)).

**Note:** If you have a diesel machine, install the spacer removed in [1 Preparing the Machine](#) ([page 1](#)).



**Figure 5**

1. Armrest
2. Armrest bracket
3. Carriage bolt



**Figure 6**

(Premium seat harness shown)

1. Open connector on the main wire harness
  2. Short wire harness from the kit
- 
4. Connect the connector on the short wire harness to the open port on the back of the seat (premium seat) or under the seat (standard seat).
  5. Use cable ties to secure the wire harness to the choke/throttle cable.

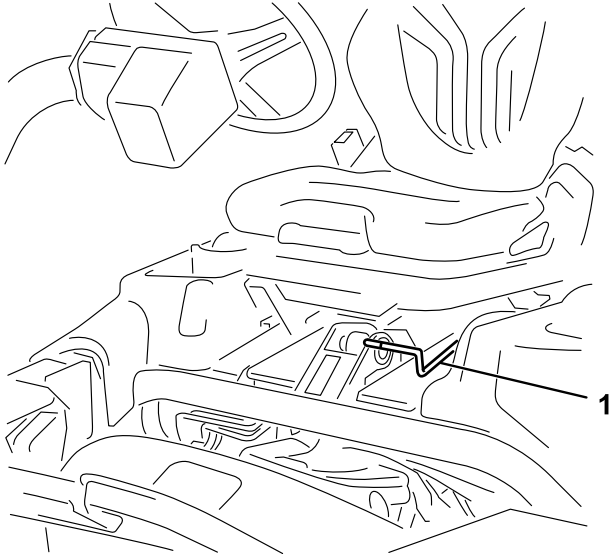
- 
3. Connect the open connector in the main wire harness (located to the right rear of the seat) to the short wire harness that came with the seat ([Figure 6](#)).

# Operation

## Seat Controls

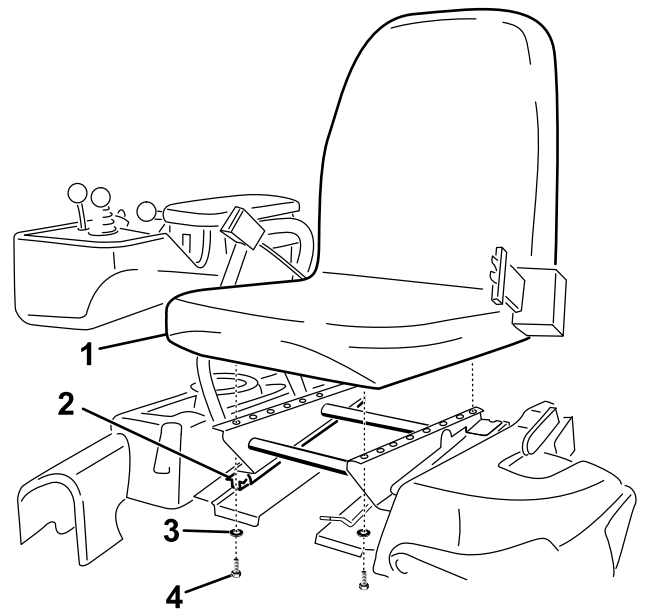
### Seat-Adjusting Lever

The seat-adjusting lever is located on the front, left corner of the seat ([Figure 7](#)). Twisting the handle up allows you to adjust the seat forward and rearward.



**Figure 7**

1. Seat-adjusting handle



g195599

**Figure 8**

- |                               |           |
|-------------------------------|-----------|
| 1. Seat (standard seat shown) | 3. Washer |
| 2. Seat rails                 | 4. Bolt   |

**Note:** If you need additional adjustment on the seat, remove the 4 bolts securing the seat to the rails and move the seat to the second set of mounting holes provided ([Figure 8](#)).

# Weight-Adjustment Lever

## Model 04719 Only

You can adjust the seat for your weight to provide a smooth and comfortable ride.

**Important:** To adjust the seat, the driver must be seated.

Adjust the seat for your weight by pulling out the lever and then pumping it up to increase the suspension or down to decrease it (Figure 9).

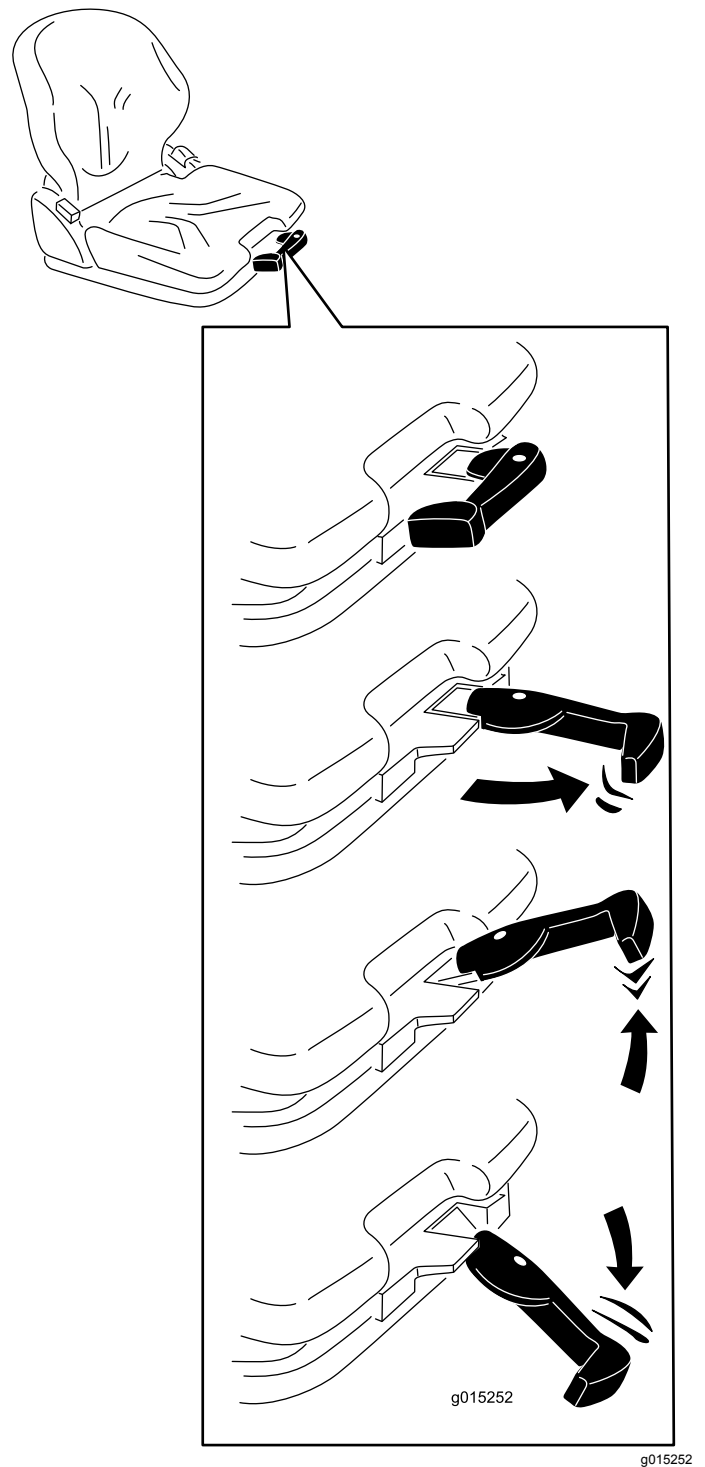


Figure 9

When the arrow is in the middle clear area of the viewing window, you have adjusted the seat correctly for your weight.

When you reach the minimum/maximum weight adjustment, you can hear it reaching the upper or lower end stop.

**Important:** To prevent injury to you and/or damage to the machine, check the setting for your weight and adjust it before operating the machine.

## Lumbar Support Knob

### Model 04719 Only

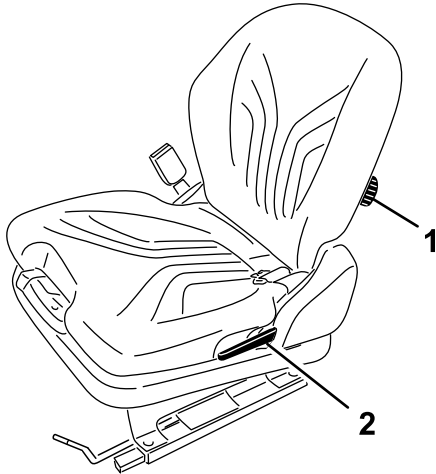
The lumbar support increases both the seating comfort and a customized lumbar support for your lower back.

Turn the adjustment knob upward to adjust the curvature in the upper part of the backrest cushion. Turn the knob downward to adjust the curvature in the lower part of the backrest cushion ([Figure 10](#)).

0 = No curvature

1 = Maximum curvature at the top

2 = Maximum curvature at the bottom



g195600

**Figure 10**

1. Lumbar-support knob

2. Backrest-locking lever

## Backrest Locking Lever

### Model 04719 Only

You can adjust the back of the seat to provide a more comfortable ride.

Pull up the locking lever to release the backrest catch ([Figure 10](#)). When releasing the backrest catch, do not apply load to the backrest by pressing against it.

By exerting pressure on or off the front or rear of the seat you can move it to the desired position. Release the locking lever to lock the backrest.

**Note:** The backrest should not be able to move into another position after it has been locked.



**Count on it.**