



Bagger Enhancement Kit

Grandstand® Mower

Model No. 139-1529

Form No. 3426-840 Rev B

Installation Instructions

Note: In most mowing conditions, use standard **high lift** cutting blades while bagging leaves with this kit. In dry, dusty conditions, use **medium lift** or **low lift** cutting blades while bagging leaves to prevent excessive blowout of debris.

Contact your Authorized Service Dealer for the proper blades for different mowing conditions.. Refer to the *Operator's Manual* for the correct procedure to replace the blades.

Loose Parts

Use the chart below to verify that all parts have been shipped.

Description	Qty.	Use
No parts required	—	Prepare the machine.
Left rubber baffle	1	Install the baffles.
Right rubber baffle	1	
Left skid skirt	1	
Right skid skirt	1	
Carriage bolt (5/16 x 1 inch)	12	
Locknut (5/16 inch)	13	
Carriage bolt (5/16 x 1-1/4 inches)	1	
Locknut (1/4 inch)	1	
Hex-head bolt (1/4 x 3/4 inch)	1	
Flat-head bolt (1/4 x 3/4 inch)	1	

Preparing the Machine

1. Disengage the PTO, move the motion-control levers to the NEUTRAL-LOCK position, and engage the parking brake.
2. Shut off the engine, remove the key, and wait for all moving parts to stop before leaving the operating position.
3. Repair all bent or damaged areas of mower deck and replace any missing parts.
4. Clean the machine of any debris on the deck to ease installation.



Installing the Baffles

1. Cut the rubber baffle lengths to fit your specific deck size as shown in [Figure 1](#). Trim the baffles at the first marking for 52 inch decks or at the second marking for 48 inch decks.

Note: The baffle length is correct for 60 inch decks and does not need to be shortened.

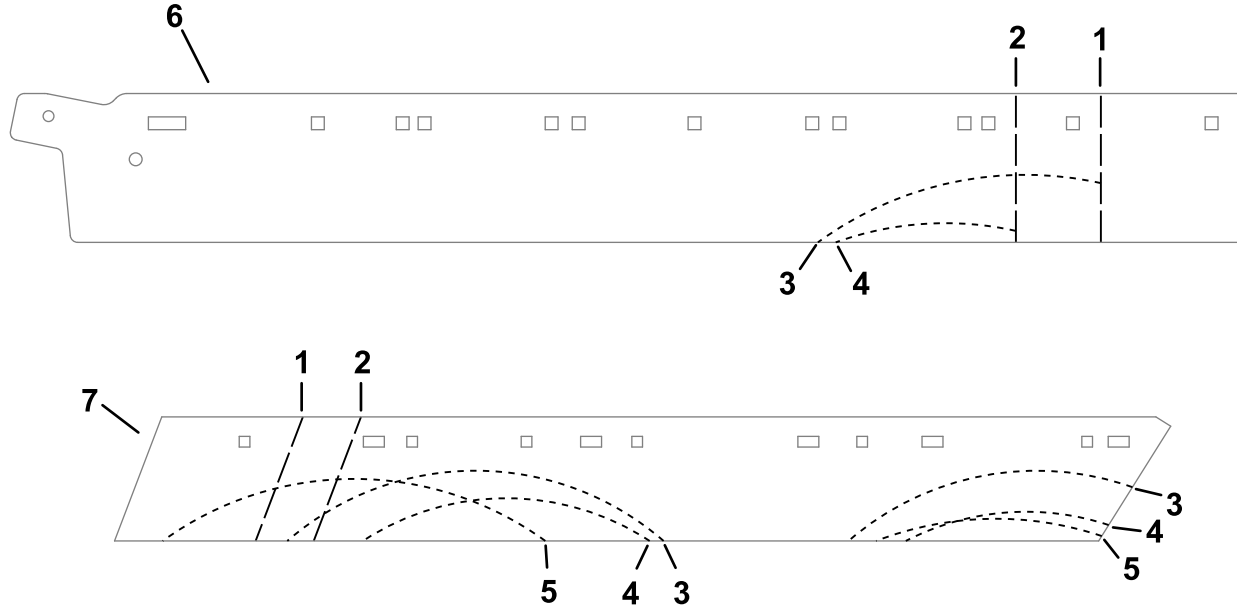


Figure 1

- | | |
|-----------------------------------|--------------------------------|
| 1. First marking (52 inch decks) | 5. Cutting arc (60 inch decks) |
| 2. Second marking (48 inch decks) | 6. Right baffle |
| 3. Cutting arc (52 inch decks) | 7. Left baffle |
| 4. Cutting arc (48 inch decks) | |

g275101

2. Locate the cutting arcs that corresponds to your deck size and trim it along the shape of the corresponding arcs ([Figure 1](#)).
3. Cut the skid skirt lengths to fit your specific deck size as shown in [Figure 2](#). Trim the skid skirts at the first notch for 52 inch decks or at the second notch for 48 inch decks.

Note: The skid skirts do not need to be shortened for 60 inch decks.

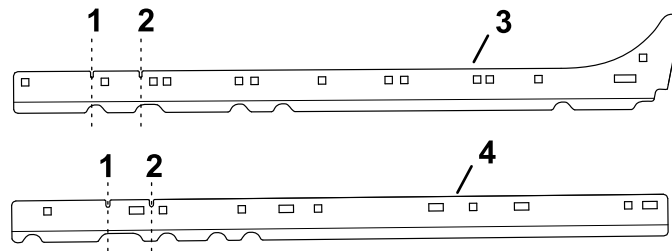
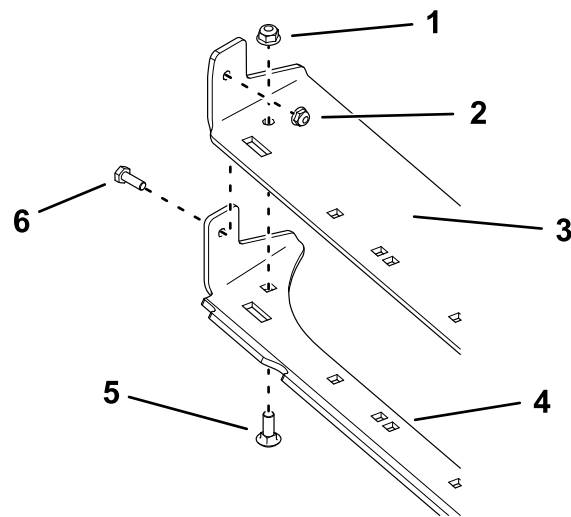


Figure 2

- | | |
|---------------------------------|---------------------|
| 1. First notch (52 inch decks) | 3. Left skid skirt |
| 2. Second notch (48 inch decks) | 4. Right skid skirt |

g275152

4. Attach the right skid skirt to the right rubber baffle using a carriage bolt (5/16 x 7/8 inch) and nut (5/16 inch) as shown in [Figure 3](#).



g275193

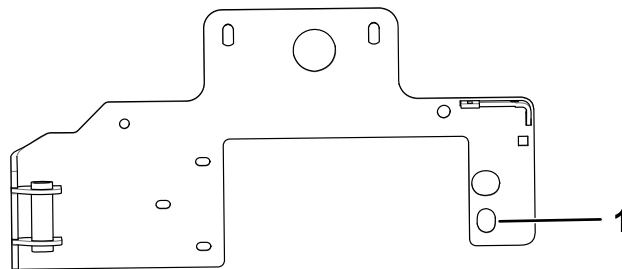
Figure 3

- | | |
|------------------------|--|
| 1. Nut (5/16 inch) | 4. Right skid skirt |
| 2. Nut (1/4 inch) | 5. Carriage bolt (5/16 x 7/8 inch) |
| 3. Right rubber baffle | 6. Hex-head or flat-head bolt (1/4 x 3/4 inch) |

5. Secure the right side of the rubber baffle and skid skirt together as shown in [Figure 3](#).

Note: If the blower mount bracket has the hole shown in [Figure 4](#), use a hex-head bolt (1/4 x 3/4 inch), nut (1/4 inch), carriage bolt (5/16 x 7/8 inch), and nut (5/16 inch).

If the mount bracket does not have the hole shown in [Figure 4](#), countersink the hole in the upper bend of the skid skirt using a 1/2 inch bit, then use a flat-head bolt (1/4 x 3/4 inch), nut (1/4 inch), carriage bolt (5/16 x 7/8 inch), and nut (5/16 inch).



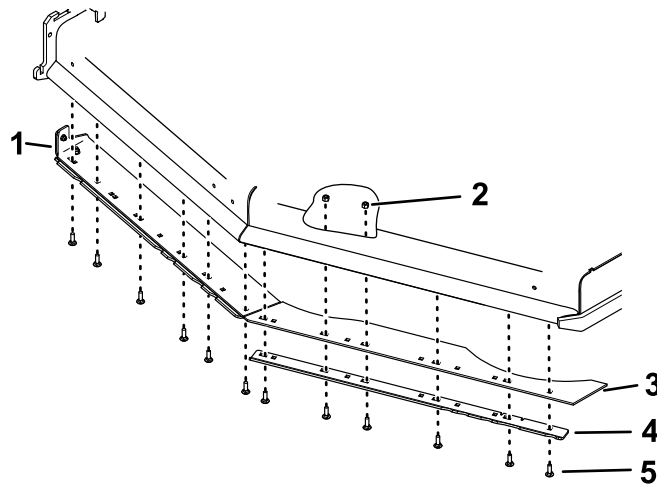
g275616

Figure 4

1. Hole in mount bracket

6. Secure the rubber baffles and skid skirts to the deck using carriage bolts (5/16 x 1 inch) and locknuts (5/16 inch) as shown in [Figure 3](#).

Note: Use 12 bolts and 12 locknuts for 60 inch decks; 48 inch and 52 inch decks will require fewer fasteners.



g275200

Figure 5
60-inch deck shown

- | | |
|---------------------------------------|----------------------------------|
| 1. Right rubber baffle and skid skirt | 4. Left skid skirt |
| 2. Locknut (5/16 inch) | 5. Carriage bolt (5/16 x 1 inch) |
| 3. Left rubber baffle | |