

TORO®

Wireless Hour Meter Kit

Greensmaster® 1018, 1021, or 1026 Mower

Model No. 139-4369

Installation Instructions

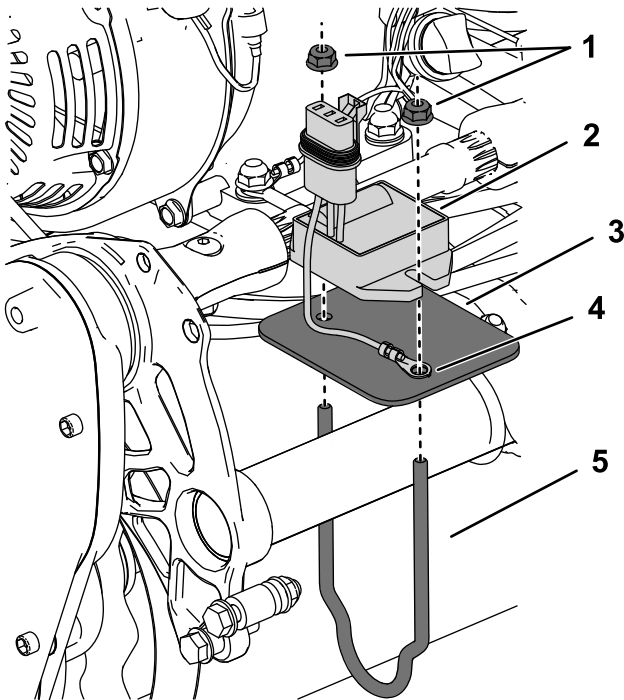
Preparing the Machine

1. Park the machine on a level surface.
2. Engage the parking brake.
3. Shut off the engine.
4. Remove the spark-plug wire from the spark plug; refer to your machine *Operator's Manual*.

Installing the Kit

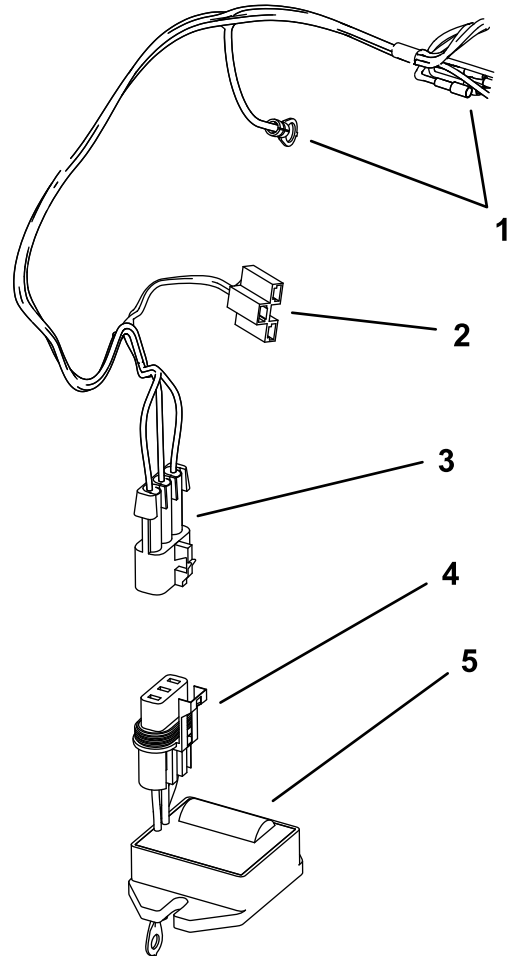
1. Install the mount, mount plate, and regulator to the rear tube frame using 2 flange nuts as shown in [Figure 1](#).

Important: Install the ring terminal from the regulator connector between the regulator and the mount plate ([Figure 1](#)).

**Figure 1**

- | | |
|----------------|------------------|
| 1. Flange nuts | 4. Ring terminal |
| 2. Regulator | 5. Mount |
| 3. Mount plate | |

2. Connect the regulator connector to the wireless hour meter kit wire harness ([Figure 2](#)).

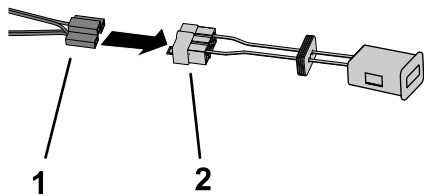
**Figure 2**

- | | |
|--------------------------------------|------------------------|
| 1. WHM harness — single connectors | 4. Regulator connector |
| 2. WHM harness — WHM connector | 5. Regulator |
| 3. WHM harness — regulator connector | |

3. Remove and discard the mounting brackets from the face of the WHM.



4. Connect the wireless hour meter to the WHM kit harness (Figure 3).



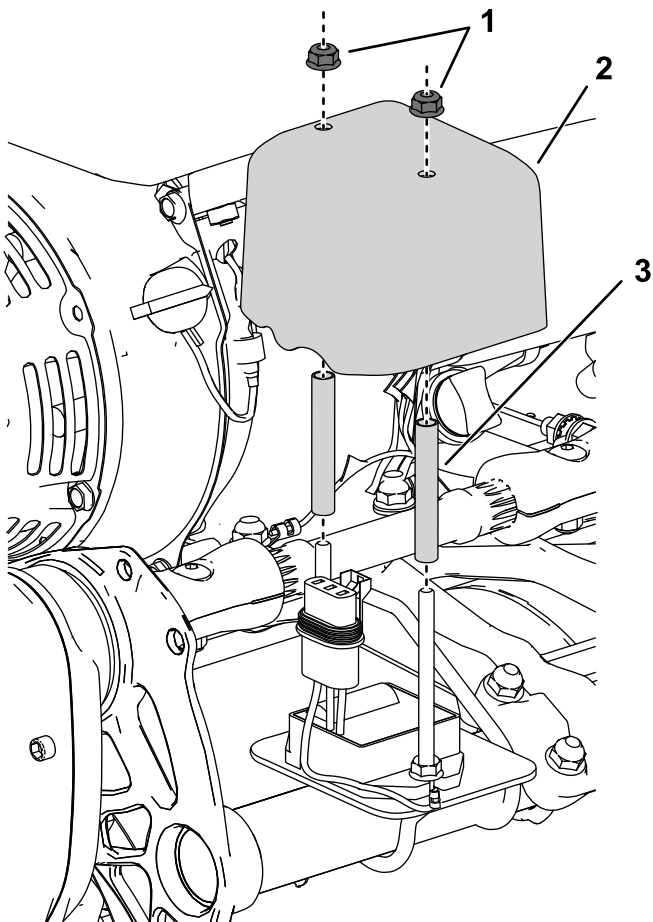
g285847

Figure 3

1. WHM harness — WHM connector 2. Wireless hour meter connector

5. Install the spacers and the cover over the wireless hour meter and the wire harness connections as shown in Figure 4.

Important: Route the remaining loose wire harness ends out of the notch in the wireless hour meter cover.



g285846

Figure 4

Wire harness connections not shown for clarity

1. Flange nuts 3. Spacer
2. Cover

6. Connect the wireless hour meter wire harness to the engine as follows:

For machines with the Light Kit **not equipped**:

- Connect the wire-harness end labeled J01 to the white end of the engine wire harness.
- Connect the wire-harness end labeled J02 to the green end of the main wire harness.
- Connect the wire-harness end labeled J03 to engine mounting bolt as a ground.
- Connect the wire-harness end labeled J04 to the white end of the main wire harness.
- Connect the wire-harness end labeled J05 to the green end of the engine wire harness.

For machines with the Light Kit **equipped**:

- Connect the wire-harness end labeled J01 to the white end of the engine wire harness.
- Connect the wire-harness end labeled J02 to the black end of the light-kit wire harness labeled J02.
- Connect the wire-harness end labeled J03 to engine mounting bolt as a ground.
- Connect the wire-harness end labeled J04 to the white end of the main wire harness.
- Connect the wire-harness end labeled J05 to the green end of the engine wire harness.
- Connect the white end of the light-kit wire harness (labeled J01) to the green end of the main wire harness.

Declaration of Incorporation

The Toro Company, 8111 Lyndale Ave. South, Bloomington, MN, USA declares that the following unit(s) conform(s) to the directives listed, when installed in accordance with the accompanying instructions onto certain Toro models as indicated on the relevant Declarations of Conformity.

Model No.	Serial No.	Product Description	Invoice Description	General Description	Directive
139-4369	—	Wireless Hour Meter Kit	KIT-WHM, GR10XX SERIES		2006/42/EC, 2014/30/EU, 2014/53/EU

Relevant technical documentation has been compiled as required per Part B of Annex VII of 2006/42/EC.

We will undertake to transmit, in response to requests by national authorities, relevant information on this partly completed machinery. The method of transmission shall be electronic transmittal.

This machinery shall not be put into service until incorporated into approved Toro models as indicated on the associated Declaration of Conformity and in accordance with all instructions, whereby it can be declared in conformity with all relevant Directives.

Certified:



John Heckel
Sr. Engineering Manager
8111 Lyndale Ave. South
Bloomington, MN 55420, USA
May 20, 2019

Authorized Representative:

Marcel Dutrieux
Manager European Product Integrity
Toro Europe NV
Nijverheidsstraat 5
2260 Oevel
Belgium



Count on it.