



Roller Scraper Kit

Groundsmaster® 1200 Series Pull Behind Rotary Mower

Model No. 140-0034

Installation Instructions

Installation

Loose Parts

Use the chart below to verify that all parts have been shipped.

Procedure	Description	Qty.	Use
1	Template	1	Drill the holes.
2	Wire Bushing Lock washer Washer Nut	12 6 6 6 6	Install the roller scrapers.

1

Drilling the Holes

Parts needed for this procedure:

1	Template
---	----------

Procedure

Note: This procedure is only for machines that do not have existing holes.

Note: Ensure the template is in the correct position on both sides of the front and rear rollers.

1. Park the machine on a level surface, shut off the engine, chock the wheels or set the parking brake if attached to a traction unit, and remove the key from the ignition switch.
2. Align the template as shown in [Figure 1](#) and mark the holes.

Important: Ensure you have the template tight against the bearing housings.

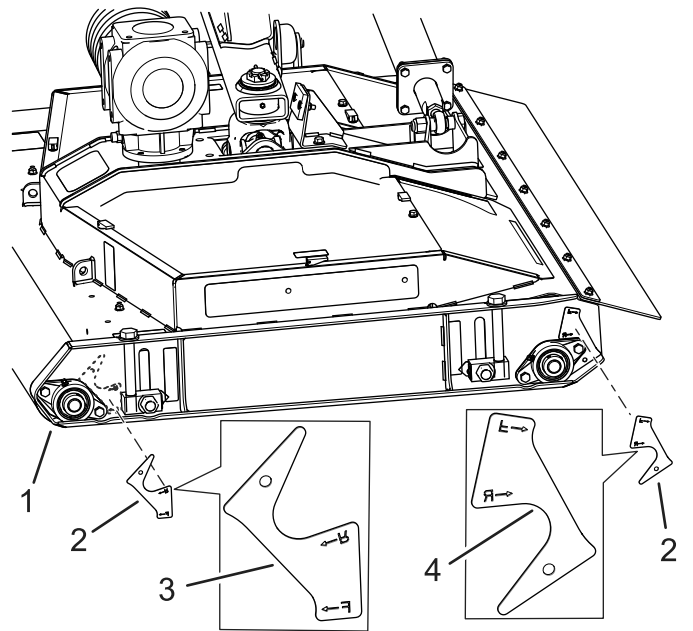
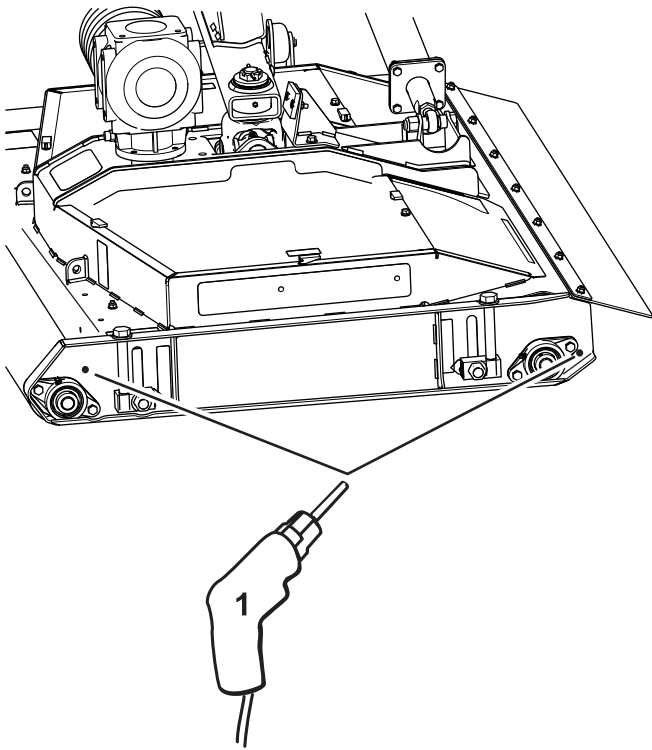


Figure 1

1. Front bearing housing—left side
2. Template
3. Align this edge to the front bearing housing.
4. Align this edge to the rear bearing housing.



3. Mark the position and drill 13/32 inch holes on each side at the end of the rollers ([Figure 2](#)).



g294297

Figure 2

1. Drill 13/32 inch holes on each side of the rollers.

-
4. Repeat this procedure on the left and right sides of each mower deck.

2

Installing the Roller Scrapers

Parts needed for this procedure:

12	Wire
6	Bushing
6	Lock washer
6	Washer
6	Nut

Procedure

Note: Install a wire for each roller.

1. Install the wire into a bushing as shown in [Figure 3](#).

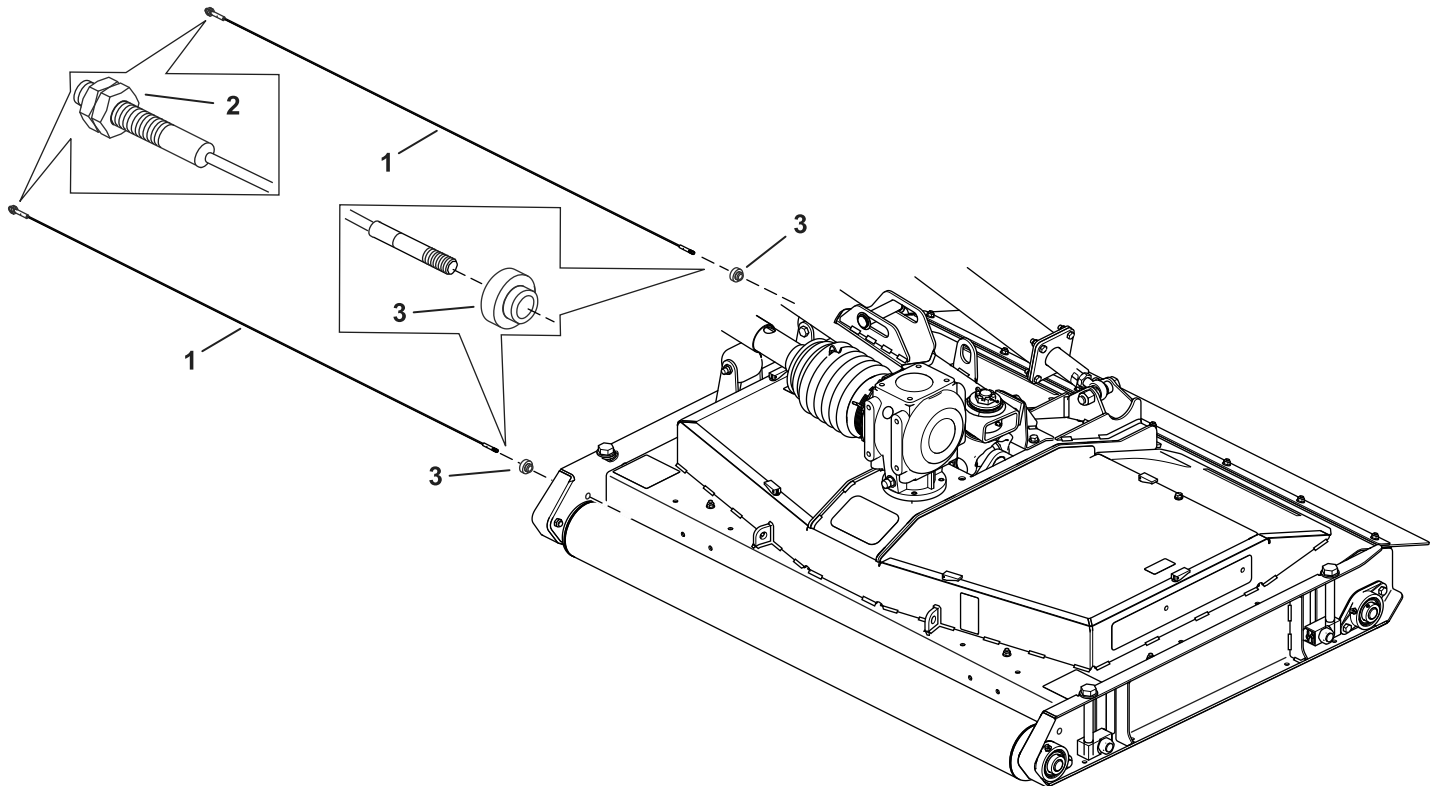


Figure 3

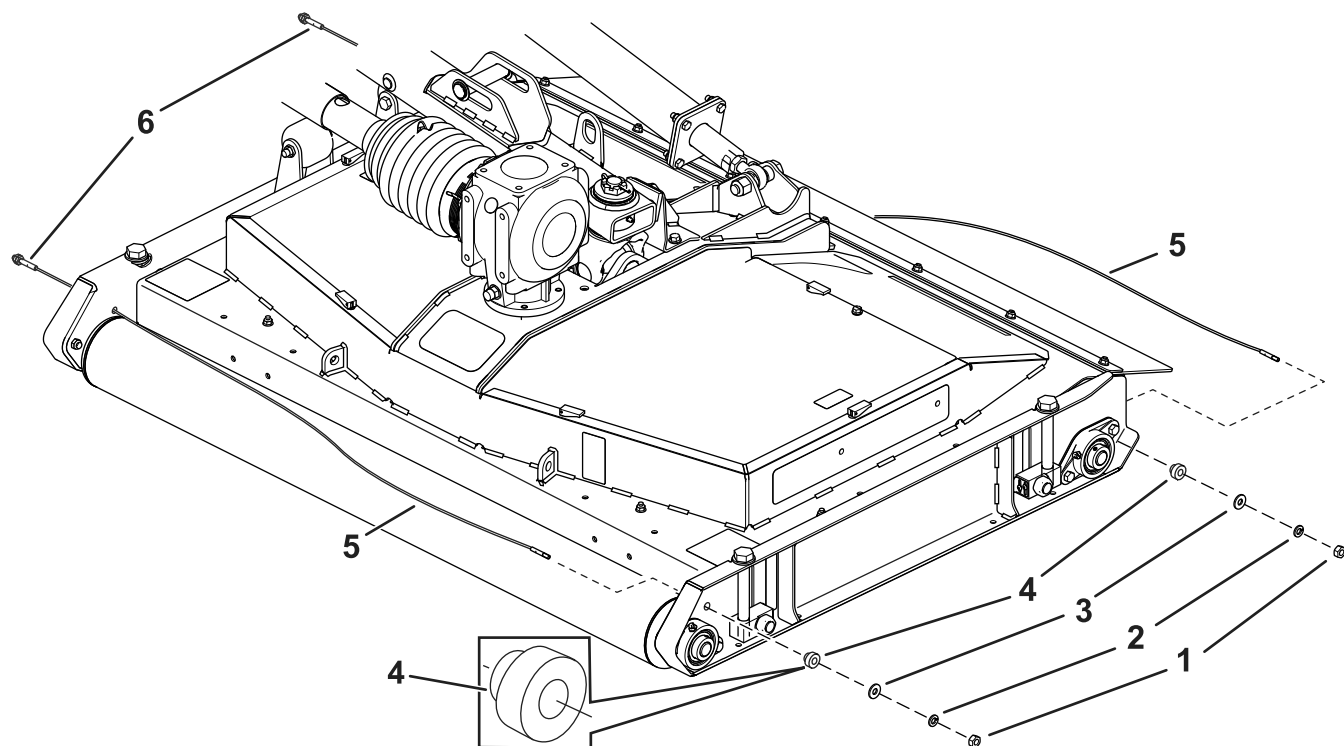
g294492

1. Wire
2. Double-nut end

3. Bushing

2. Install the wire through the holes in the side of the mower deck.
3. Attach the wire to the side of the mower deck with a nut, lock washer, washer, and bushing ([Figure 4](#)).
4. Adjust the wire tension with the nut.

Note: Ensure the wire is taut and without slack.



g294298

Figure 4

- | | |
|----------------|-------------------|
| 1. Nut | 4. Bushing |
| 2. Lock washer | 5. Wire |
| 3. Washer | 6. Double-nut end |

-
5. Repeat this procedure for each mower deck.