



9.6 Volt – 16” Cordless Hedge Trimmer

Model No. 51595–9900001 and Up

Parts Catalog

Ordering Replacement Parts

To order replacement parts, please supply: the part number, the quantity, and the description of each part desired.

Understanding Reference Numbers

Each identified part in an illustration has a reference number. The reference number for a part also appears in the parts list, along with other information about the part.

This catalog uses two special reference number formats, one to indicate parts in a service assembly and another to indicate the quantity of a given part in an illustration.

Service Assembly Reference Numbers

Parts in service assemblies have reference numbers in the form **a:b**. The **a** represents the reference number of the entire service assembly and the **b** represents a sequential number unique to each part within the service assembly.

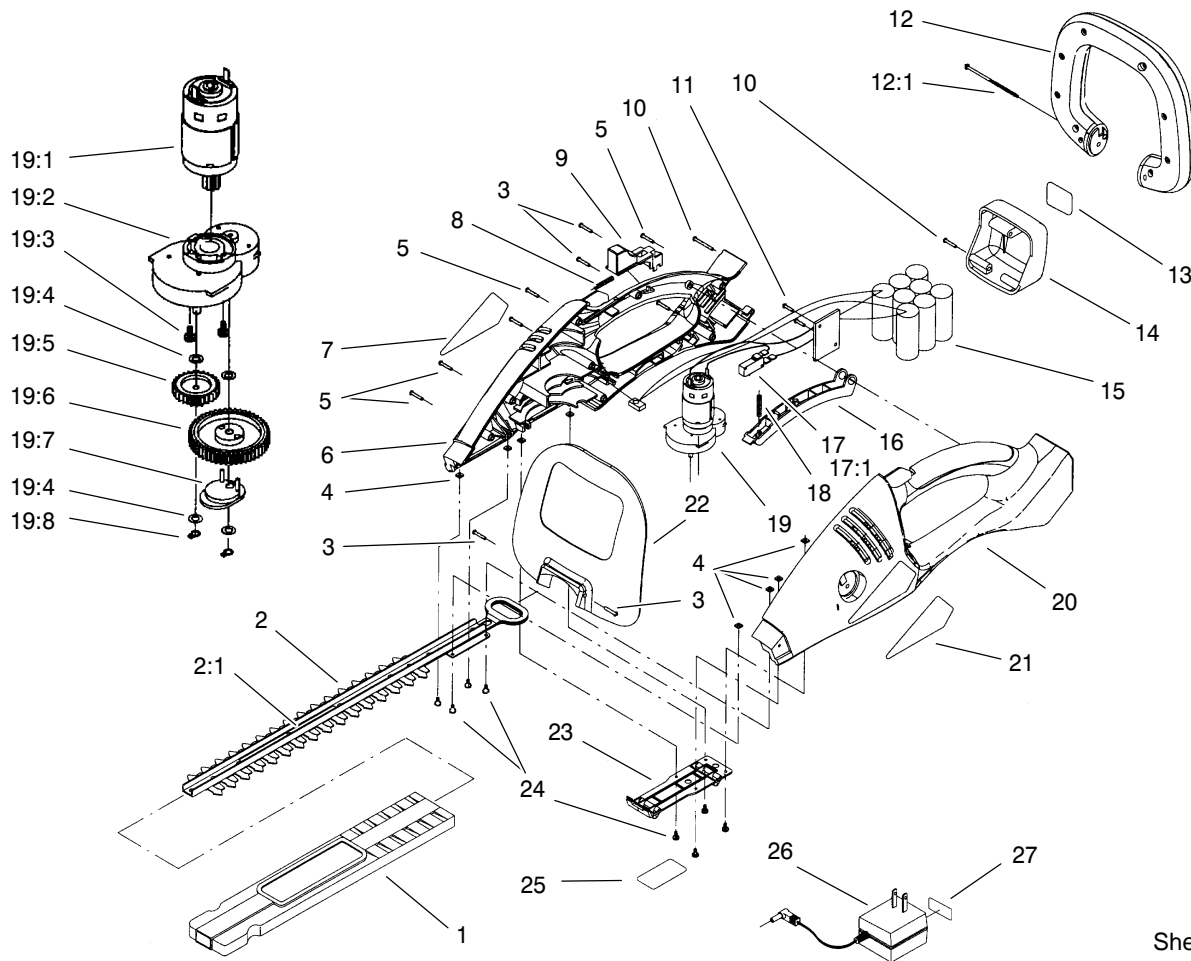
For example, a wheel assembly might be identified by reference number **6**, the tire by **6:1**, the valve by **6:2**, and the wheel by **6:3**. When you order the assembly identified by reference number **6**, you receive all parts identified by reference numbers **6:1**, **6:2**, and **6:3**. However, you may also order any part individually.

Reference numbers of this type appear in illustrations and in part lists.

Reference Numbers Indicating Quantity

In an illustration, if a reference number indicates more than one part, the reference number has the form **nX y**. The **n** represents the quantity of the part, the **X** is the multiplication symbol, and the **y** represents the reference number.

For example, in an illustration, the reference number **2X 37** means that two of the parts identified by reference number **37** are indicated.



Sheet No.:1
C-2843

Hedge Trimmer Assembly

Ref. No.	Part No.	Qty.	Description
1	99-9851	1	Protector – Blade, 16"
2	99-8834	1	Blade ASM
2:1	99-8835	1	Decal – Safety, Blade
3	99-9866	4	Screw – PPH
4	99-8803	8	Nut – Square
5	99-8804	6	Screw – PPH
6	99-8840	1	Housing – Cover
7	99-8841	1	Decal – Housing, Cover
8	99-8807	1	Spring – Button, Safety
9	99-8808	1	Button – Safety
10	99-8809	2	Screw – PPH
11	99-8842	2	Screw – PPH
12	99-8811	1	Safety Handle ASM
12:1	99-8810	1	Screw – PPH
13	99-8812	1	Decal – Cover, Battery
14	99-8813	1	Cover – Battery
15	99-8843	1	Battery ASM
16	99-8844	1	Button – On/Off
17	99-8845	1	Harness – Wire ASM
17:1	99-8816	1	Switch – On/Off
18	99-8818	1	Spring – Button, On/Off
19	99-8846	1	Motor And Gear Train ASM

Ref. No.	Part No.	Qty.	Description
19:1	99-8847	1	Motor ASM
19:2	99-8821	1	Housing – Gear ASM
19:3	99-8822	2	Screw – PPH
19:4	99-8823	4	Washer – Flat
19:5	99-8824	1	Gear – Center
19:6	99-8825	1	Gear – Final
19:7	99-8826	1	Cam
19:8	99-8827	2	Ring – Retaining, External
20	99-8848	1	Housing – Support
21	99-8849	1	Decal – Housing, Support
22	99-8830	1	Guard – Hand
23	99-8831	1	Cover – Bottom
24	99-8822	8	Screw – PPH
25	99-9850	1	Decal–Model/Warning
26	99-8800	1	Charger
27	99-9853	1	Decal – Warning