



**Z Master[®] Z320 Out Front Z
Mower & Bagger Unit
Model No. 74191—895001 and Up**

Parts Catalog

Ordering Replacement Parts

To order replacement parts, please supply: the part number, the quantity, and the description of each part desired.

Understanding Reference Numbers

Each identified part in an illustration has a reference number. The reference number for a part also appears in the parts list, along with other information about the part.

This catalog uses two special reference number formats, one to indicate parts in a service assembly and another to indicate the quantity of a given part in an illustration.

Service Assembly Reference Numbers

Parts in service assemblies have reference numbers in the form **a:b**. The **a** represents the reference number of the entire service assembly and the **b** represents a sequential number unique to each part within the service assembly.

For example, a wheel assembly might be identified by reference number **6**, the tire by **6:1**, the valve by **6:2**, and the wheel by **6:3**. When you order the assembly identified by reference number **6**, you receive all parts identified by reference numbers **6:1**, **6:2**, and **6:3**. However, you may also order any part individually.

Reference numbers of this type appear in illustrations and in part lists.

Reference Numbers Indicating Quantity

In an illustration, if a reference number indicates more than one part, the reference number has the form **nX y**. The **n** represents the quantity of the part, the **X** is the multiplication symbol, and the **y** represents the reference number.

For example, in an illustration, the reference number **2X 37** means that two of the parts identified by reference number **37** are indicated.

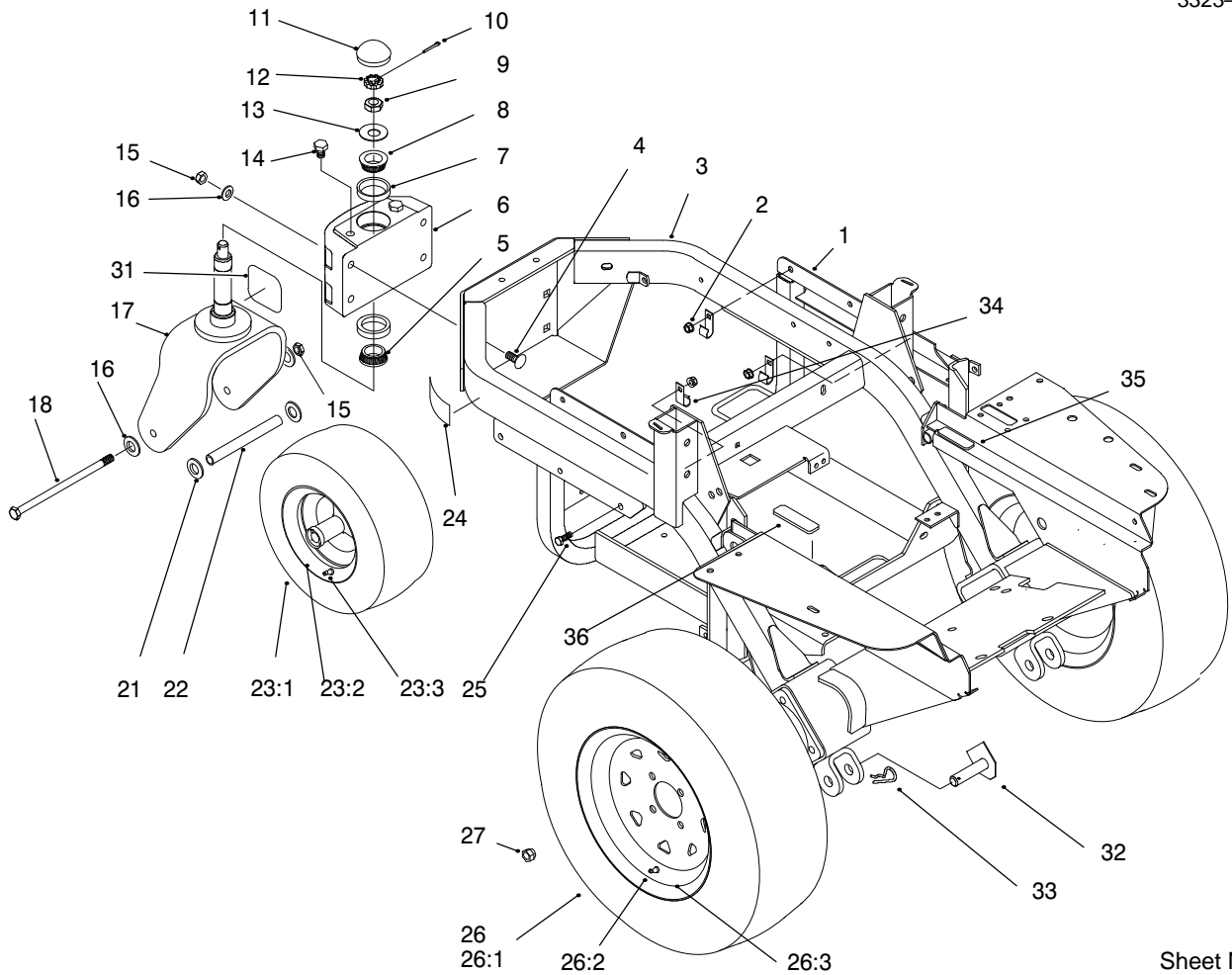
Contents

Description	Page	Description	Page
Frame & Wheel Assembly	1	Electric Schematic	18
Engine & Fuel Tank Assembly	2	Hydraulic Schematic	19
Electrical System Assembly	3	Crankshaft	20
Parking Brake Assembly	4	Crankcase	21
Hydraulic System Assembly	5	Oil Pan / Lubrication	22
Hydraulic System Assembly	6	Head / Valve / Breather	23
Seat And Fender Assembly	7	Ignition / Electrical	24
Steering Control Assembly	8	Blower Housing And Baffles	25
Heat Shield And Exhaust Assembly	9	Starter System	26
Drive System Assembly	10	Fuel System	27
Carrier Frame Assembly	11	Engine Controls	28
Gear Box And Cover Assembly	12	Air Intake / Filtration	29
Deck And Blade Assembly	13	Exhaust	30
Plenum And Discharge Bracket Assembly	14	Gear Box Assembly No. 94-4641	31
Blower Assembly	15	Hydraulic Pump Asm No. 98-4374 & 98-4375 ..	32
Bumper Assembly	16	Gear Box Assembly No. 99-0282	33
Grass Bin And Chute Assembly	17		

Part Description Abbreviations

Part descriptions in this catalog may include the following abbreviations.

Abbreviation	Meaning	Abbreviation	Meaning
AR	as required	INC	incorporated
ASM	assembly	LH	left hand
CARR	carriage	NI	nylon insert
DEG	degrees	PPH	Phillips pan head
FH	flat head	PTH	Phillips truss head
GA	gauge	PTO	power take off
HF	hex flange	RH	right hand
HH	hex head	SFH	slotted fillister head
HHF	hex head flange	SHH	slotted hex head
HLH	hex lag head	SQH	square head
HJ	hex jam	SHWH	slotted hex washer head
HOC	height-of-cut	SPH	slotted pan head
HS	hex socket	SRH	slotted round head
HSBH	hex socket button head	STD	standard
HSFH	hex socket flat head	TAP	self tapping
HSH	hex socket head	TTH	Torx truss head
HWH	hex washer head	WH	wing head
HWHTF	hex washer head thread forming		

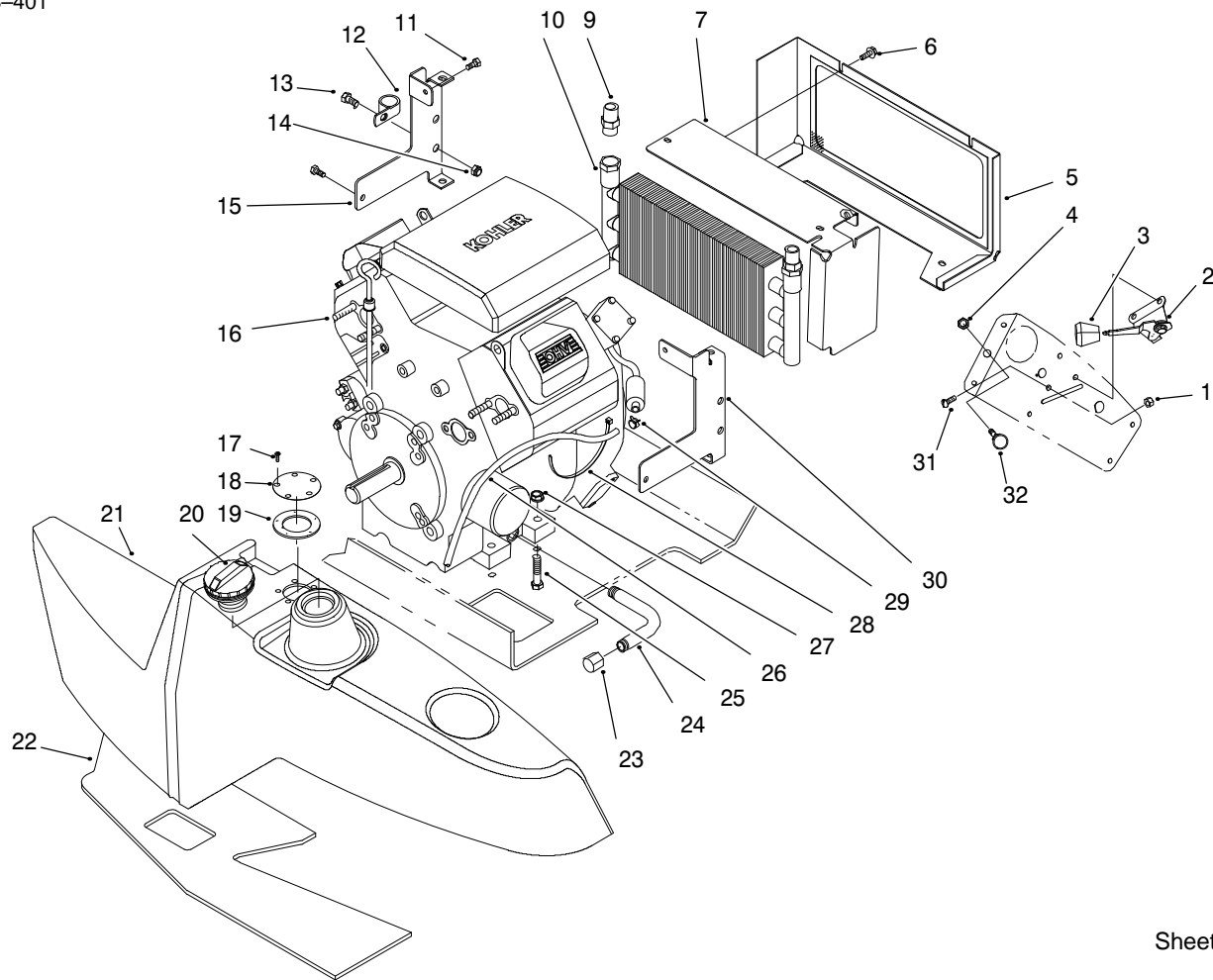


Sheet No.: 2

Frame & Wheel Assembly

Ref. No.	Part No.	Qty.	Description
1	94-4618-03	1	Support-Engine
2	3296-39	6	Nut-Lock
3	98-1976	1	Main Frame
4	3233-27	4	Screw-CARR
5	254-70	1	Bearing w/Cone & Seal
6	94-9489-01	1	Housing-Spindle
7	254-61	2	Cup-Bearing
8	254-62	1	Cone-Bearing
9	3220-7	1	Nut-Jam
10	3272-17	1	Pin-Cotter
11	94-4665	1	Dustcap
12	93-0307	1	Nut-Lock
13	3256-8	1	Washer-Flat
14	325-2	2	Screw
15	3296-23	5	Nut-Lock
16	3256-26	6	Washer-Flat
17	94-4647-01	1	Castor Fork
18	325-24	1	Screw-HH
21	3256-39	2	Washer-Flat
22	94-4753	1	Tube-Spacer
23		2	Tire and Wheel ASM
23:1	94-9384	1	Tire
23:2	98-4351	1	Wheel
23:3	232-27	1	Valve Stem
24	93-1265	1	Decal-Hot

Ref. No.	Part No.	Qty.	Description
25	323-6	6	Screw-HH
26		2	Tire and Wheel ASM
26:1	94-9387	2	Tire
26:2	232-27	2	Valve Stem
26:3	94-9386	2	Wheel
27	242-50	8	Nut-Lug
31	95-1956	1	Decal-Z320
32	94-4755	2	Pivot Pin ASM
33	3290-343	2	Pin-Cotter
34	8830	1	Retainer-"J"
35	52-5260	2	Rubber Pad
36	98-1977	1	Decal-Warning

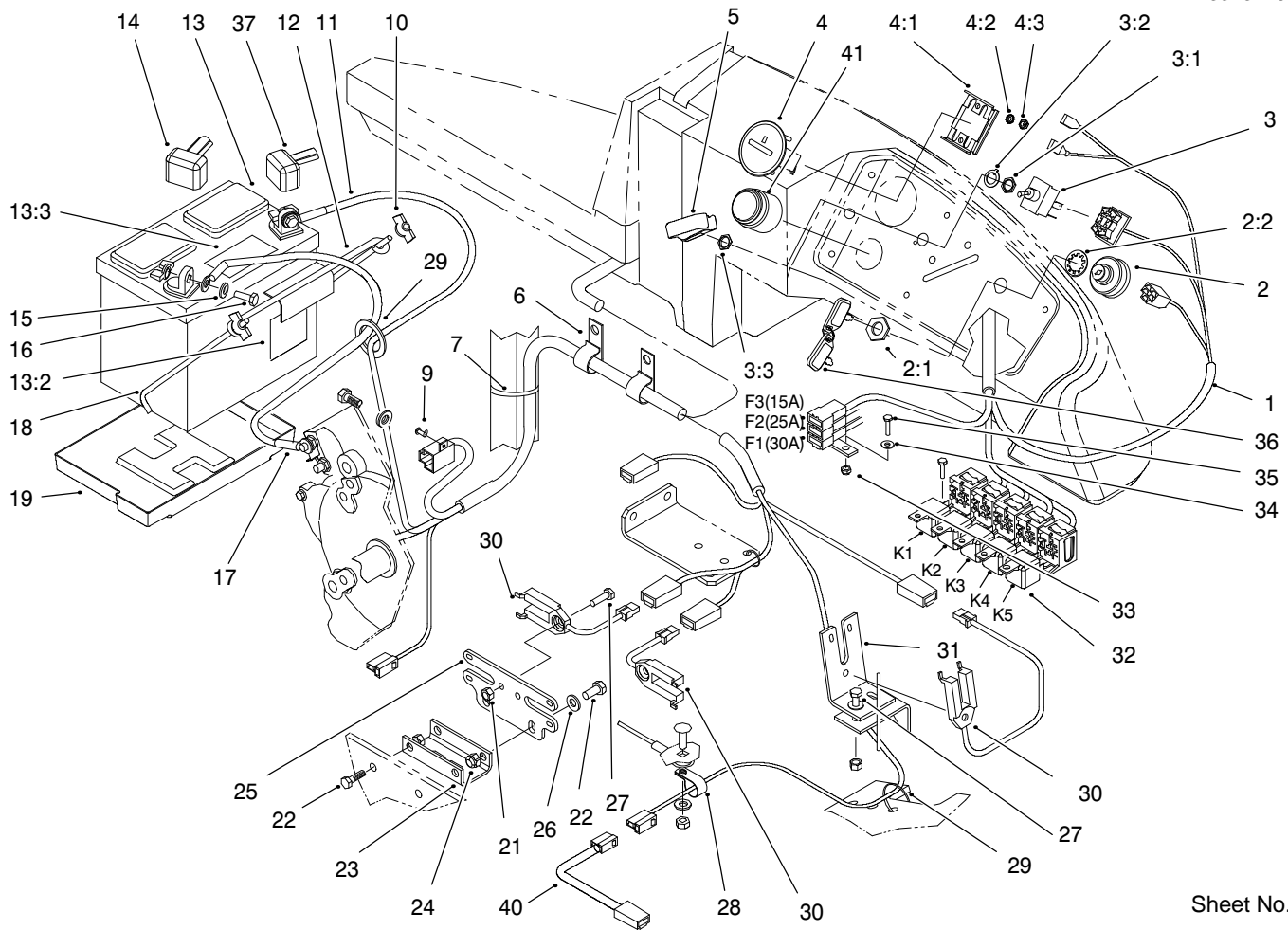


Sheet No.: 3

Engine & Fuel Tank Assembly

Ref. No.	Part No.	Qty.	Description
1	3296-2	2	Nut-Lock
2	98-4350	1	Control-Throttle
3	66-0120	1	Knob
4	3220-3	1	Nut-Hex Jam
5	94-9556-03	1	Cooler Shroud ASM
6	3234-4	6	Screw-HH
7	98-1969-03	1	Cooler Shroud ASM
9	93-5107	2	Fitting-Adapter
10	24-0760	1	Exchanger-Heat
11	32144-10	2	Screw-HH
12	2412-39	4	R-Clamp
13	322-3	4	Screw-HH
14	3296-29	4	Nut-Lock
15	98-1972-03	1	Bracket-Rear
16		1	Engine Kohler CH20S 64582
17	3250-29	5	Screw
18	94-9597-03	1	Cover-Fuel Tank Opening
19	62-7650	1	Gasket
20	93-3101	1	Gas Cap
21	94-9553	1	Fuel Tank ASM
22	98-1319	1	Foam-Tank
23	288-4	1	Cap-Pipe
24	94-9499	1	Tube-Oil Drain
25	323-9	4	Screw-HH

Ref. No.	Part No.	Qty.	Description
26	94-9502	1	Hose-Gas
27	3296-39	4	Nut-Lock
28	3290-378	A/R	Tie-Cable
29	2412-98	2	Clamp-Hose
30	98-1971-03	1	Bracket-Front
31	3250-13	2	Screw
32	98-1956	1	Control-Push Pull

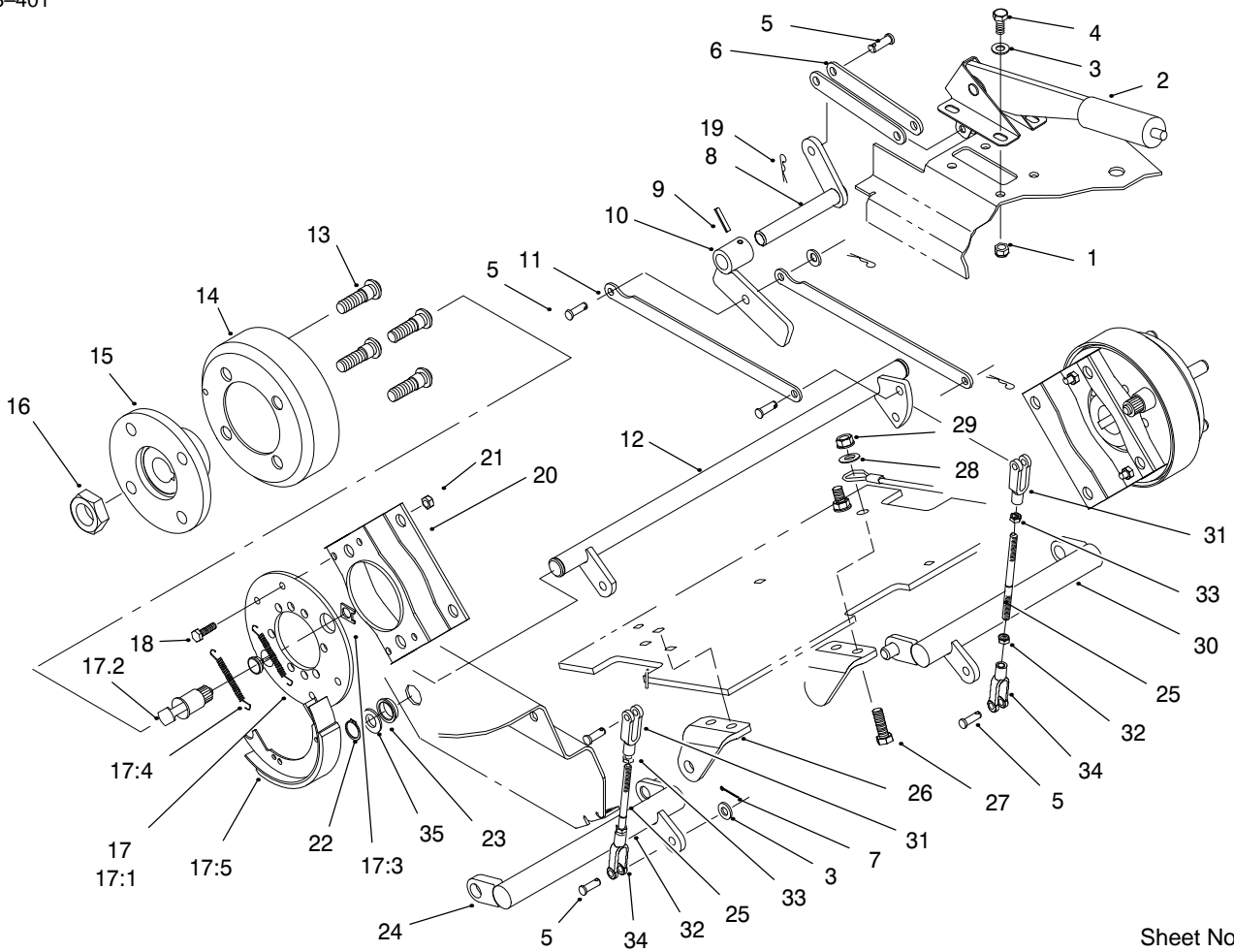


Sheet No.: 4

Electrical System Assembly

Ref. No.	Part No.	Qty.	Description
1	98-3317	1	Harness-Wire
2	111216	1	Switch-Ignition
2:1	101884	2	Nut-Hex
2:2	9201604	1	Washer-Lock
3	92-9811	1	Switch-Toggle
3:1	105805	1	Nut
3:2	102950	1	Washer
3:3	113179	1	Nut
4	78-0020	1	Hourmeter
4:1	78-3320	1	Clamp-Hour Meter
4:2	3255-25	2	Washer-Lock
4:3	3217-27	2	Nut-HH
5	113050	1	Cover-Switch
6	94-9580	2	Clamp-J
7	3290-379	A/R	Tie-Cable
9	32144-74	2	Screw
10	32103-22	4	Nut-Wing
11	92-6287	1	Wire-Ground
12	113010	1	Hold Down
13	94-6666	1	Battery ASM
13:2	93-6668	1	Decal-Battery
13:3	93-7276	1	Decal-Danger
14	28-8080	1	Boot-Terminal
15	3256-22	4	Washer-Flat

Ref. No.	Part No.	Qty.	Description
16	321-4	2	Screw-HH
17	28-3893	1	ASM-Wire
18	94-6146	2	Retainer-Battery
19	106948	1	Tray-Battery
21	3296-42	5	Nut-Lock
22	322-3	4	Screw-HH
23	94-4797-03	1	Channel-Mount Switch
24	3296-29	4	Nut-Lock
25	94-9460	1	Plate-Switch Mount
26	3256-23	2	Washer-Flat
27	321-4	5	Screw-HH
28	2412-93	1	R-Clamp
29	3290-378	A/R	Tie-Cable
30	98-1324	3	Switch-Interrupter
31	94-4696	1	Angle-Mount
32	116397	5	Relay
33	3296-2	3	Nut Lock
34	3256-14	3	Washer-Flat
35	32105-13	3	Screw-HH
36	62-7770	2	Key-Ignition
37	98-0603	1	Boot-Terminal
40	98-4373	1	Harness-Adapter
41	80-9330	1	Alarm-Audio ASM6

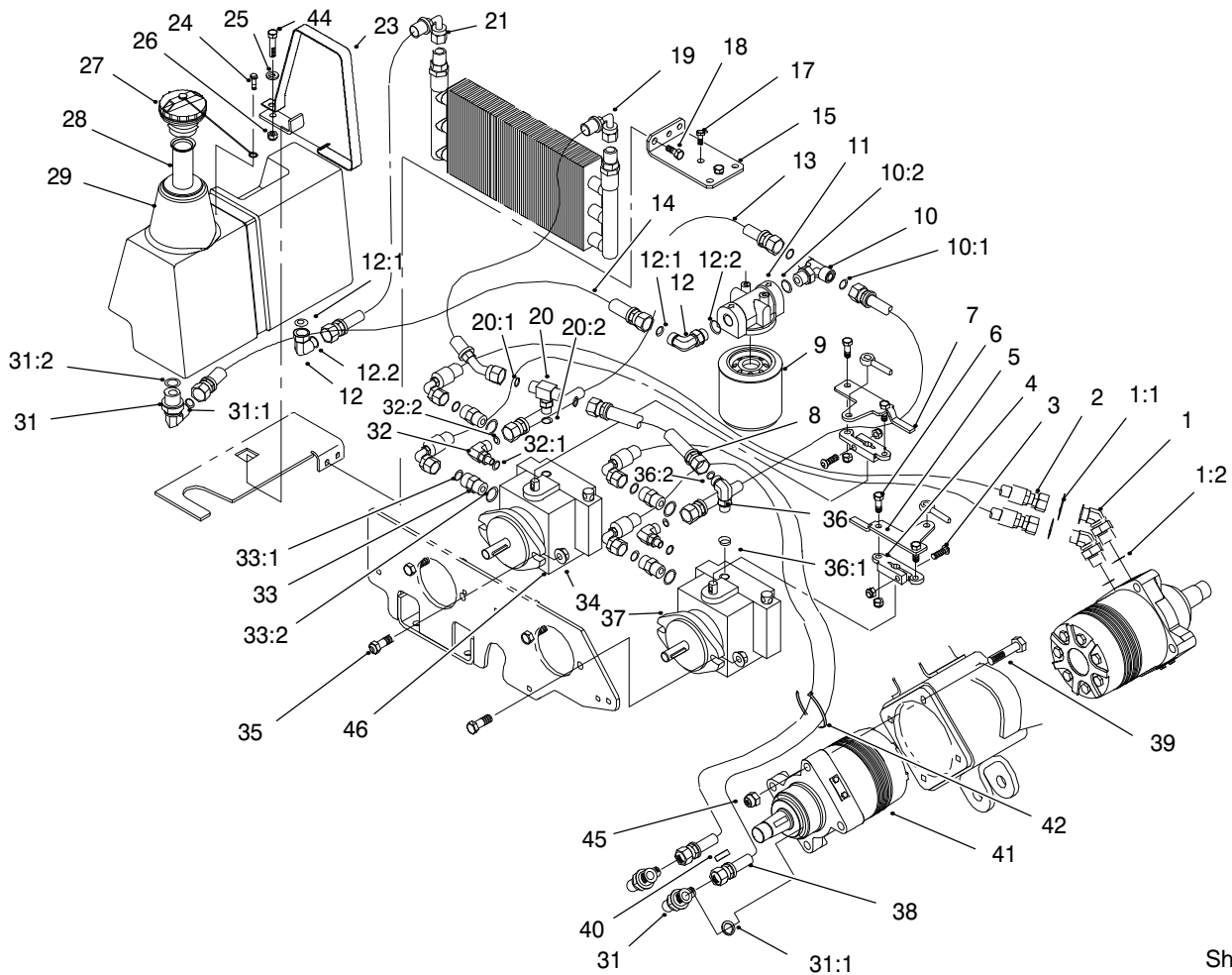


Sheet No.: 5

Parking Brake Assembly

Ref. No.	Part No.	Qty.	Description
1	3296-29	4	Nut-Lock
2	94-4602	1	Lever-Brake
3	3256-23	4	Washer-Flat
4	322-3	4	Screw-HH
5	283-1	8	Pin-Clevis
6	98-1992	2	Link-Brake
7	3272-10	2	Pin-Cotter
8	98-1990	1	Transfer Shaft ASM
9	32121-93	1	Pin-Spiral
10	98-1994	1	Brake Hub ASM
11	98-1991	2	Link-Connect
12	98-1988	1	Torsion Shaft ASM
13	85-6540	8	Stud
14	10-6850	2	Drum Brake
15	10-6870	2	Hub-Wheel
16	26-3790	2	Nut-Lock
17	71-1500	2	Brake ASM
17:1	70-9870	2	Plate-Backing
17:2	70-9860	2	Cam Shaft
17:4	70-9880	4	Spring-Return
17:5	70-9840	4	Brake Shoe
18	321-4	8	Screw-HH
19	3290-307	6	Pin-Cotter
20	84-2000	2	Bracket-Brake
21	3296-42	8	Nut-Lock
22	32120-72	2	Ring-Retaining

Ref. No.	Part No.	Qty.	Description
23	106950	2	Bushing
24	98-1998	1	RH Brake Lever ASM
25	98-1996	2	Rod-Brake
26	94-9573-01	2	Mount-Lever
27	323-18	4	Screw-HH
28	3256-24	1	Washer-Flat
29	3296-39	4	Nut-Lock
30	98-1997	1	LH Brake Lever ASM
31	282-2	2	Pin-Clevis
32	3220-20	2	Nut-Hex Jam
33	3220-2	2	Nut-Jam
34	98-4367	2	Clevis-Adjustable
35	9202547	A/R	Washer

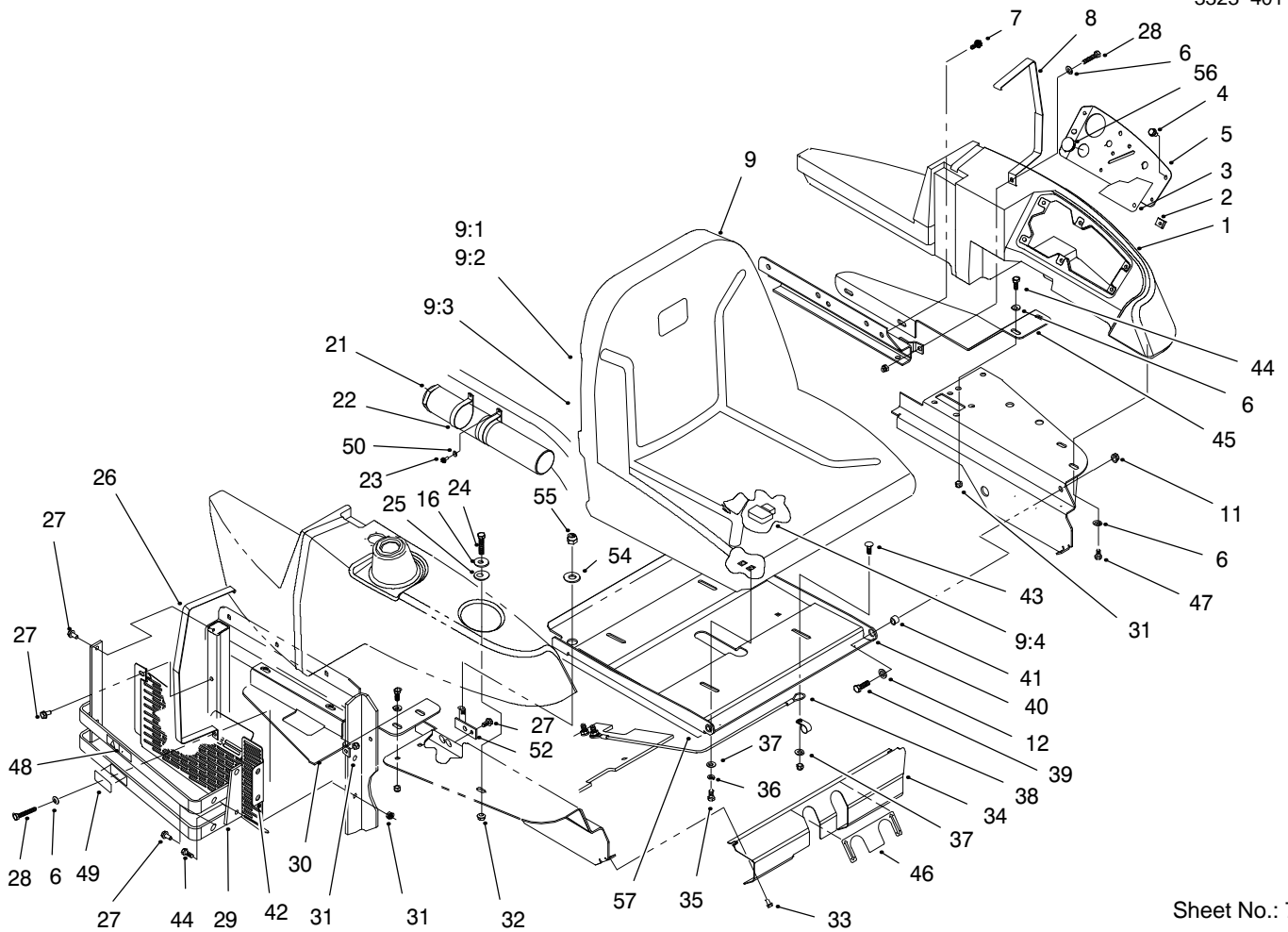


Sheet No.: 6

Hydraulic System Assembly

Ref. No.	Part No.	Qty.	Description
1	340-89	2	Fitting-Hydraulic
1:1	237-30	2	O-Ring
1:2	237-80	2	O-Ring
2	94-4714	2	Hose ASM-Hyd
3	3274-83	2	Screw-HSH
4	94-4678	2	Arm-Pump Control
5	94-4701-03	1	Plate-Control
6	322-5	4	Screw-HH
7	94-4702-03	1	Plate-Control
8	94-4712	1	Hose ASM-Hyd
9	67-8110	1	Filter-Oil
10	340-157	1	Fitting-Hydraulic
10:1	237-30	2	O-Ring
10:2	237-79	1	O-Ring
11	86-9080	1	Head-Filter
12	340-98	2	Fitting-Hydraulic
12:1	237-30	2	O-Ring
12:2	237-79	2	O-Ring
13	98-4384	2	Hose ASM - Hyd
14	94-4710	1	Hose ASM-Hyd
15	94-9525-03	1	Angle-Mount
17	3234-4	2	Screw-HH
18	32144-14	2	Screw-HH
19	94-4713	1	Hose ASM-Hyd
20	340-94	1	Tee
20:1	237-22	2	O-Ring

Ref. No.	Part No.	Qty.	Description
20:2	237-42	1	O-Ring
21	94-4709	1	Hose ASM-Hyd
23	94-4642-03	1	Strap-Hydraulic Tank
24	3290-126	1	Screw-Hfh
25	3256-23	1	Washer-Flat
26	3296-29	7	Nut-Lock
27	93-4365	1	Oil Cap
28	92-1705	1	Screen-Filter
29	94-4700	1	Tank-Hydraulic
31	340-105	3	Fitting-Elbow
31:1	237-30	3	O-Ring
31:2	237-80	3	O-Ring
32	340-97	2	Fitting-Hydraulic
32:1	237-22	2	O-Ring
32:2	237-78	2	O-Ring
33	340-4	4	Fitting-Hydraulic
33:1	237-30	4	O-Ring
33:2	237-79	4	O-Ring
34	32128-42	4	Nut-Hex Flange
35	324-5	4	Screw-HH
36	340-77	1	Fitting-Hydraulic
36:1	237-22	1	O-Ring
36:2	237-42	1	O-Ring
37	98-4375	1	Pump-Hydraulic
38	94-4705	2	Hose ASM
39	3274-93	8	Screw-HSH



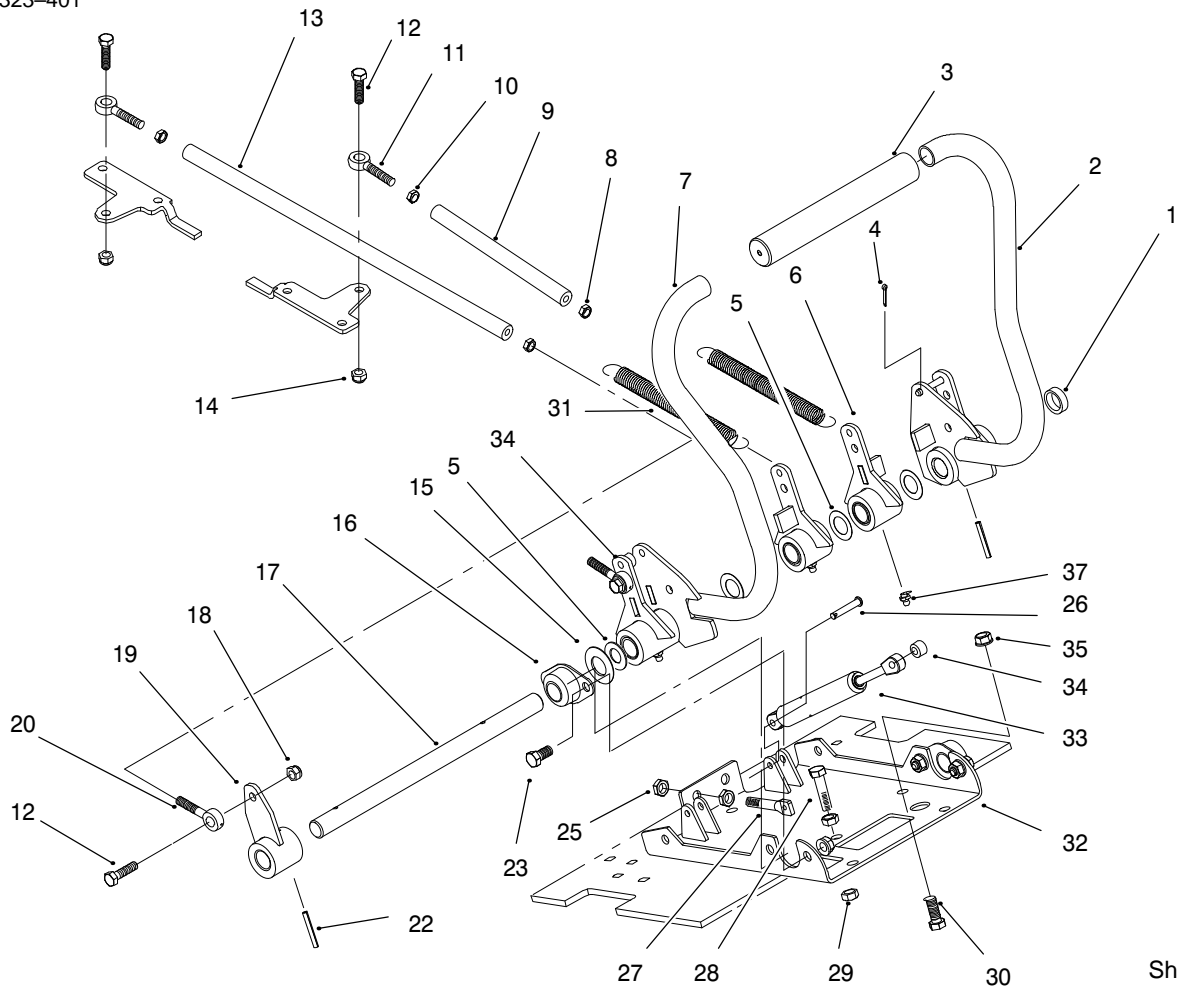
Sheet No.: 7

Seat And Fender Assembly

Ref. No.	Part No.	Qty.	Description
1	94-4698	1	Console
2	95-1962	6	Clip
3	98-1973	1	Decal-Instrument
4	32144-124	6	Screw-PPH
5	98-1999-03	1	Panel-Instrument
6	3256-23	8	Washer-Flat
7	32144-11	4	Screw-TAP
8	94-9488-03	1	Strap-Console
9	92-6280	1	Seat ASM
9:1	92-6534	1	Shell-Seat
9:2	92-6533	1	Kit-Replacement Cushion
9:3	351-78	1	Edging
9:4	92-6282	1	Seat-Switch
*	321-3	2	Screw-HH
*	351-80	1	Edging Clip
11	3296-39	2	Nut-Lock
12	3256-24	2	Washer-Flat
16	63-8410	1	Washer-Flat
21	74-0720	1	Tube-Manual
22	2412-120	2	Clamp-R
23	3269-8	2	Rivet
24	323-9	1	Screw-HH
25	240-11	1	Grommet
26	94-4799-03	1	Strap-Fuel Tank
27	32144-14	7	Screw-HWH
28	322-10	2	Screw-HH
29	98-4377	1	Bumper ASM
30	94-4798-01	1	Plate-Tank Support

Ref. No.	Part No.	Qty.	Description
31	3296-29	9	Nut-Lock
32	3290-357	1	Nut-Lock Flange
33	32144-4	4	Screw-TAP
34	94-9491-01	1	Plate-Cover
35	322-3	4	Screw-HH
36	3253-4	4	Washer-Lock
37	3256-2	5	Washer-Flat
38	98-4371	1	Cable-Seat
39	323-7	2	Screw-HH
40	94-9529-01	1	Plate-Seat
41	52-2480	2	Spacer
42	98-1987-03	1	Guard-Belt
43	3230-2	1	Screw-CARR
44	322-4	6	Screw-HH
45	94-4635-01	1	Plate-Console Support
46	98-1974	1	Decal-Operation
47	322-2	2	Screw-HH
48	98-1977	1	Decal-Warning
49	93-1265	1	Decal-Hot
50	3256-21	2	Washer-Flat
52	98-1985	1	Latch-ASM
54	3256-6	1	Washer-Flat
55	3296-23	1	Nut-Lock
57	98-4389	1	Foam-Plate

* Not Illustrated

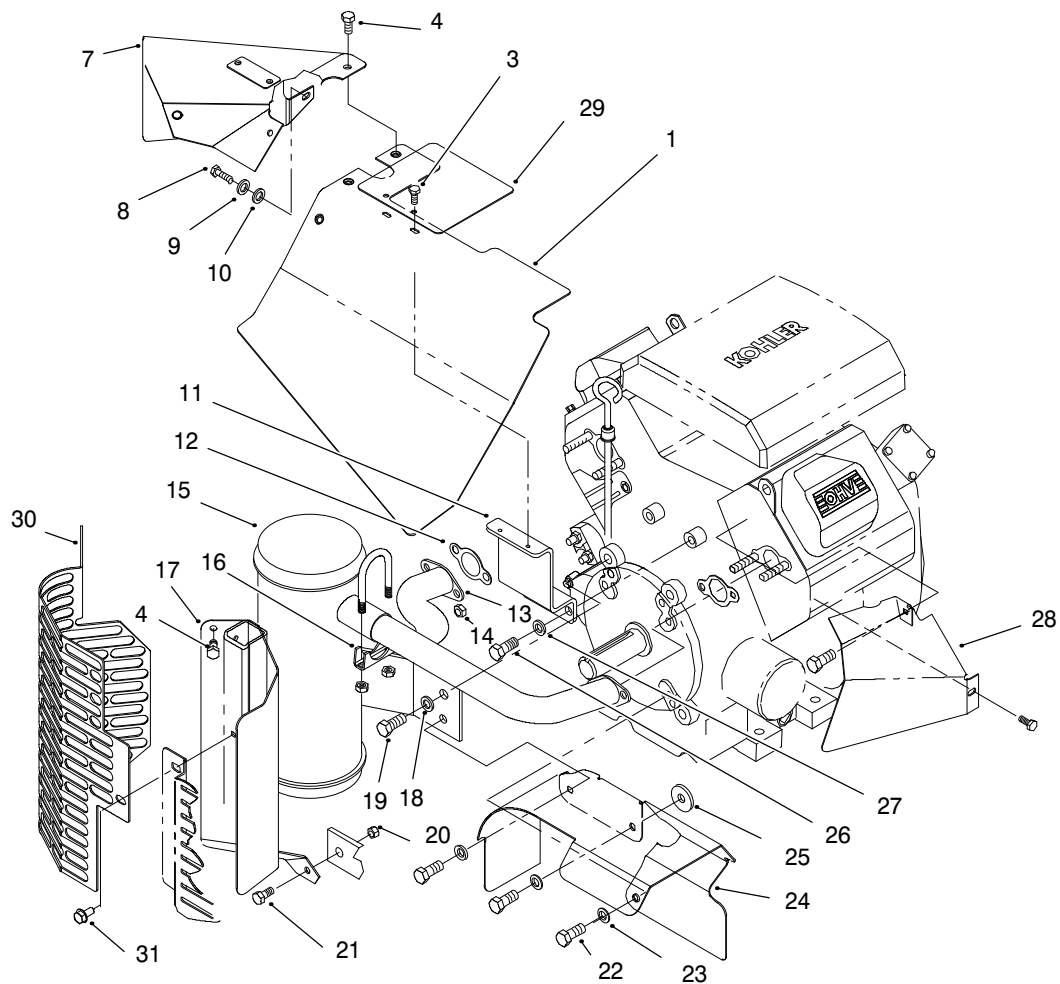


Sheet No.: 8

Steering Control Assembly

Ref. No.	Part No.	Qty.	Description
1	94-9524	1	Spacer-Control
2	94-9517-03	1	Handle-Control LH
3	94-9490	2	Grip-Cushion
4	3272-4	4	Pin-Cotter
5	9202574	A/R	Washer-Flat
6	94-9552	2	Center Control ASM
7	94-9551	1	Handle-Control RH
8	3220-20	2	Nut-Hex Jam
9	94-4717	1	Rod-Control
10	3220-2	2	Nut-Jam
11	2411-52	2	Rod-End RH
12	322-5	4	Screw-HH
13	94-4718	1	Rod-Control
14	3296-29	2	Nut-Lock
15	3256-39	1	Washer-Flat
16	27-2320	2	Bearing
17	94-9515	1	Shaft-Control
18	3296-47	2	Nut-Lock
19	94-9594-03	1	Hub-Control
20	2411-53	2	Rod-End LH
22	32121-103	2	Pin-Spring
23	323-4	4	Screw-HH
25	3218-3	4	Nut-HJ
26	283-66	4	Pin-Clevis
27	113697	2	Eye Bolt
28	323-8	2	Screw-HH

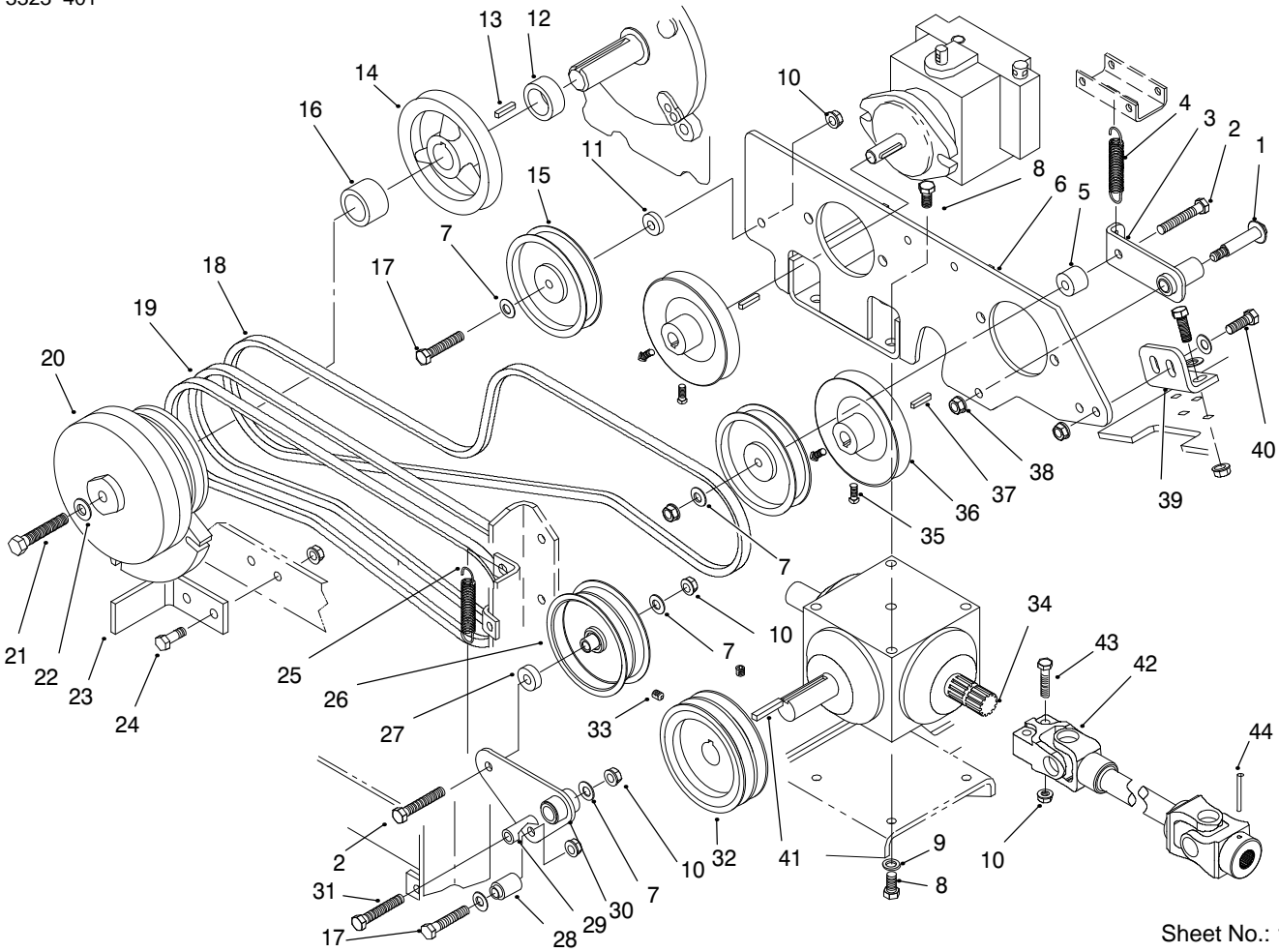
Ref. No.	Part No.	Qty.	Description
29	3217-7	4	Nut-Lock
30	323-6	3	Screw-HH
31	98-1322	2	Spring-Extension
32	94-9591-03	1	Mount-Channel
33	98-4397	2	Damper-Control
34	94-9593	2	Spacer-Damper
35	3296-39	7	Nut-Lock
37	302-5	3	Fitting-Grease



Sheet No.: 9

Heat Shield And Exhaust Assembly

Ref. No.	Part No.	Qty.	Description	Ref. No.	Part No.	Qty.	Description
1	98-1967	1	Top Heat Baffle ASM	27	42-9850	2	Washer-Lock
3	98-4386	2	Screw-Thread Forming	28	98-1349	1	Baffle-Heat
4	3234-4	4	Screw-HH	29	98-1979	1	Panel-Access
7	98-4368	1	Rear Heat Baffle Ce ASM	30	98-1980-03	1	Guard-Muffler
8	42-9430	1	Bolt w/Washer	31	32144-14	2	Screw-HWH
9	48-8020	1	Washer-Lock				
10	33093-00	1	Washer-Flat M6				
11	94-9561-03	1	Bracket-Manifold Shield				
12	93-0350	2	Gasket-Exhaust				
13	94-9494	1	Manifold				
14	92-6780	4	Nut-HHF				
15	94-9495	1	Muffler				
16	2112-11	1	Clamp-Muffler				
17	98-1329	1	Baffle-Heat				
18	3253-6	1	Washer-Lock				
19	324-4	1	Screw-HH				
20	3296-42	1	Nut-Lock				
21	321-4	1	Screw-HH				
22	323-5	3	Screw-HH				
23	3253-5	3	Washer-Lock				
24	98-1326	1	Baffle-Heat				
25	2844	1	Washer-Flat				
26	33114-020	2	Screw-HH				

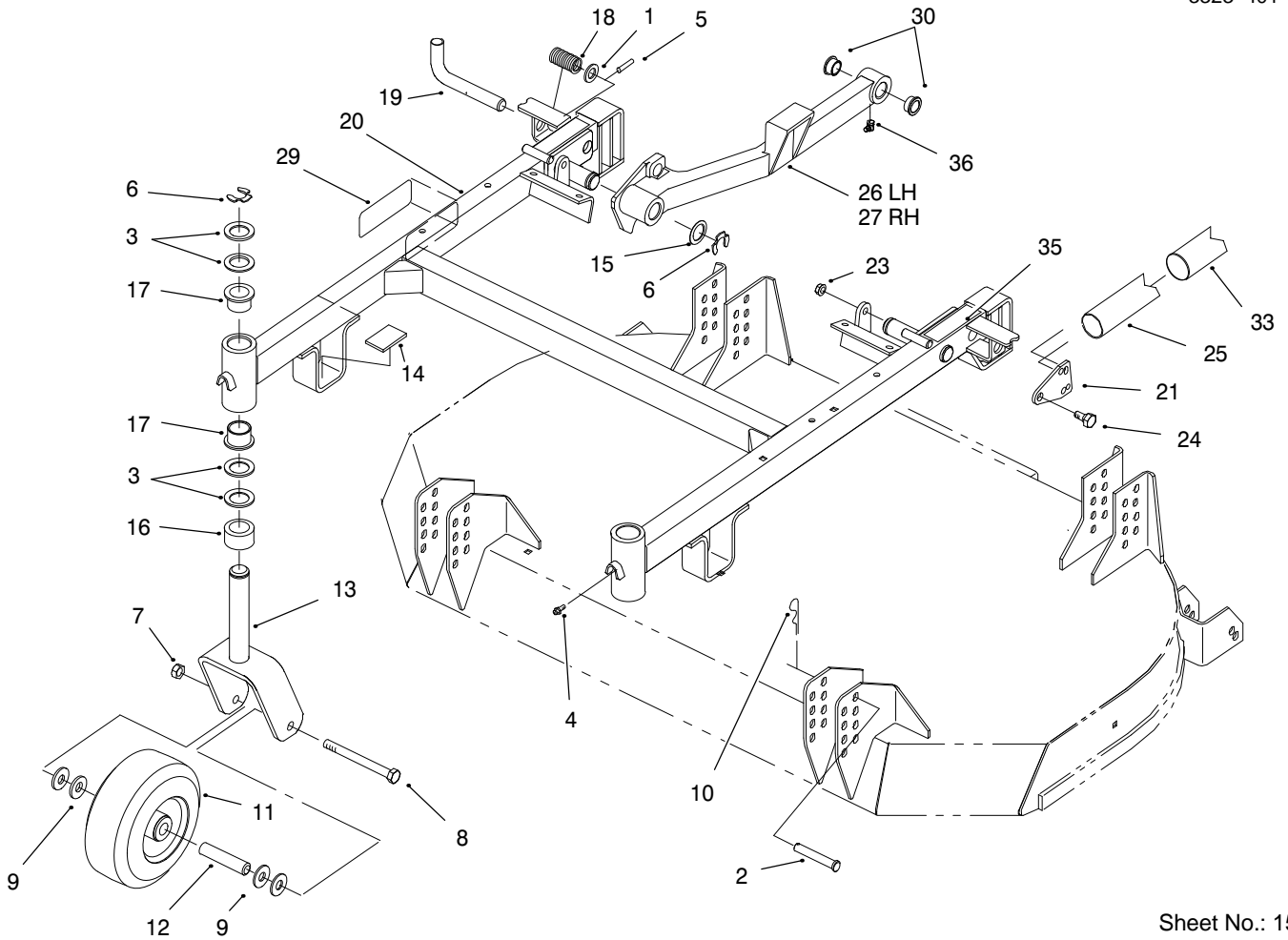


Sheet No.: 10

Drive System Assembly

Ref. No.	Part No.	Qty.	Description
1	27-6230	1	Bolt-Wheel
2	323-11	2	Screw
3	95-1950	1	Arm ASM
4	94-9599	1	Spring-Extension
5	94-4792	1	Spacer-Idler Arm
6	94-4658-03	1	Pump-Mount
7	3256-24	5	Washer-Flat
8	3234-1	8	Screw-HHF
10	3296-39	13	Nut-Lock
11	9202204	1	Washer
12	94-4688	1	Spacer-Engine Shaft
13	5-0698	1	Key
14	94-4628	1	Engine-Pulley
15	93-1622	2	Pulley-Idler
16	94-4689	1	Spacer-Engine Shaft
17	323-10	2	Screw-HH
18	94-4607	1	Belt-Pump Drive
19	94-4608	1	Belt-PTO
20	94-4632	1	Clutch ASM
21	3212-10	1	Screw
22	3256-25	1	Washer-Flat
23	98-1301-03	1	Stop-Clutch
24	323-6	2	Screw-HH
25	88-6460	1	Spring - Extension
26	66-4210	1	Pulley-Idler
27	94-4685	1	Spacer-Idler

Ref. No.	Part No.	Qty.	Description
28	95-1967	1	Spacer-Spring
29	114511	1	Spacer
30	95-1968	1	Idler Arm ASM
31	323-31	1	Screw-Hhcs
32	94-4629	1	Clutch-Pulley
33	3246-3	2	Screw-HSH
34	94-4641	1	Gearbox-PTO Drive
35	3241-5	4	Set Screw
36	80-8170	2	Pulley-Pump
37	80-6090	2	Key-Square
38	3296-6	1	Nut-Lock
39	94-4787-03	1	Mount-Plate
40	3234-11	4	Screw-HHF
41	67-7490	1	Key
42	94-4722	1	Shaft-Drive
43	323-19	2	Screw-HH
44	32121-48	1	Pin-Roll

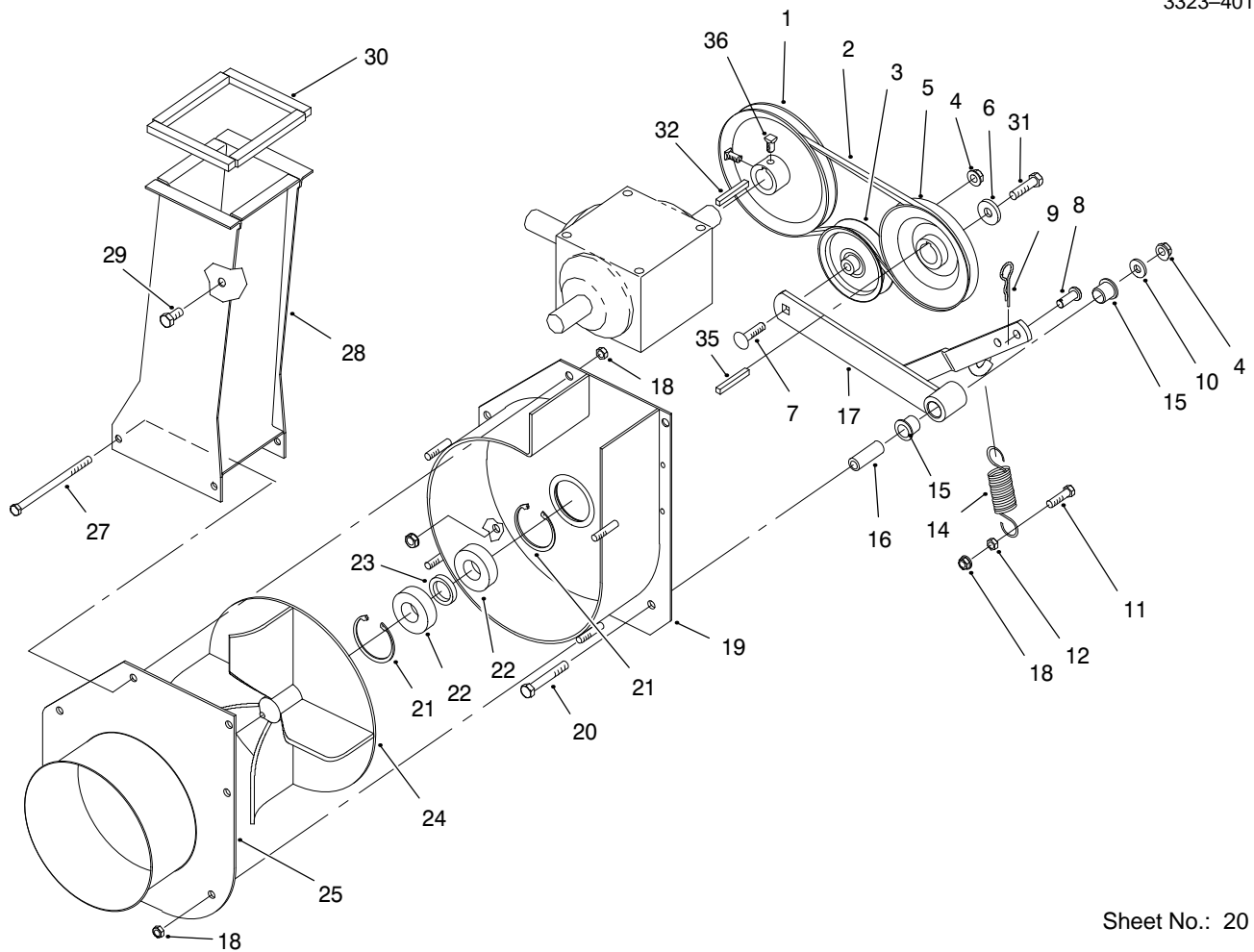


Sheet No.: 15

Carrier Frame Assembly

Ref. No.	Part No.	Qty.	Description
1	920225	2	Washer
2	283-55	4	Pin-Clevis
3	3-6781	8	Washer-Thrust
4	302-5	2	Fitting-Grease
5	32121-79	2	Roll Pin
6	32151-91	4	Ring-Retaining
7	32153-5	2	Nut-Lock
8	325-19	2	Screw-HH
9	3256-6	8	Washer-Flat
10	3290-355	4	Pin-Hair
11	98-2859	2	Wheel & Tire ASM
12	68-8980	2	Bushing-Spanner
13	98-2857	2	Castor Fork ASM
14	95-4303	2	Cushion-Rubber
15	9202514	2	Washer-Flat
16	93-1167	2	Spacer-Castor
17	94-1291	4	Bushing-Special
18	98-1339	2	Spring-Compression
19	98-1337	2	Pin-Pivot
20	95-4304	1	Frame-Carrier
21	94-4750	4	Plate-End
23	3296-39	4	Nut-Lock
24	46-3380	4	Bolt-Shoulder
25	94-4664	2	Spring-Extension
26	17-8379	1	LH Push Arm ASM
27	17-8389	1	RH Push Arm ASM

Ref. No.	Part No.	Qty.	Description
29	98-4362	1	Decal-H.O.C.
30	27-9080	4	Bushing
33	94-9550	2	Cover-Spring
35	55-4300	2	Decal-Warning
36	302-60	2	Fitting-Lube 90°

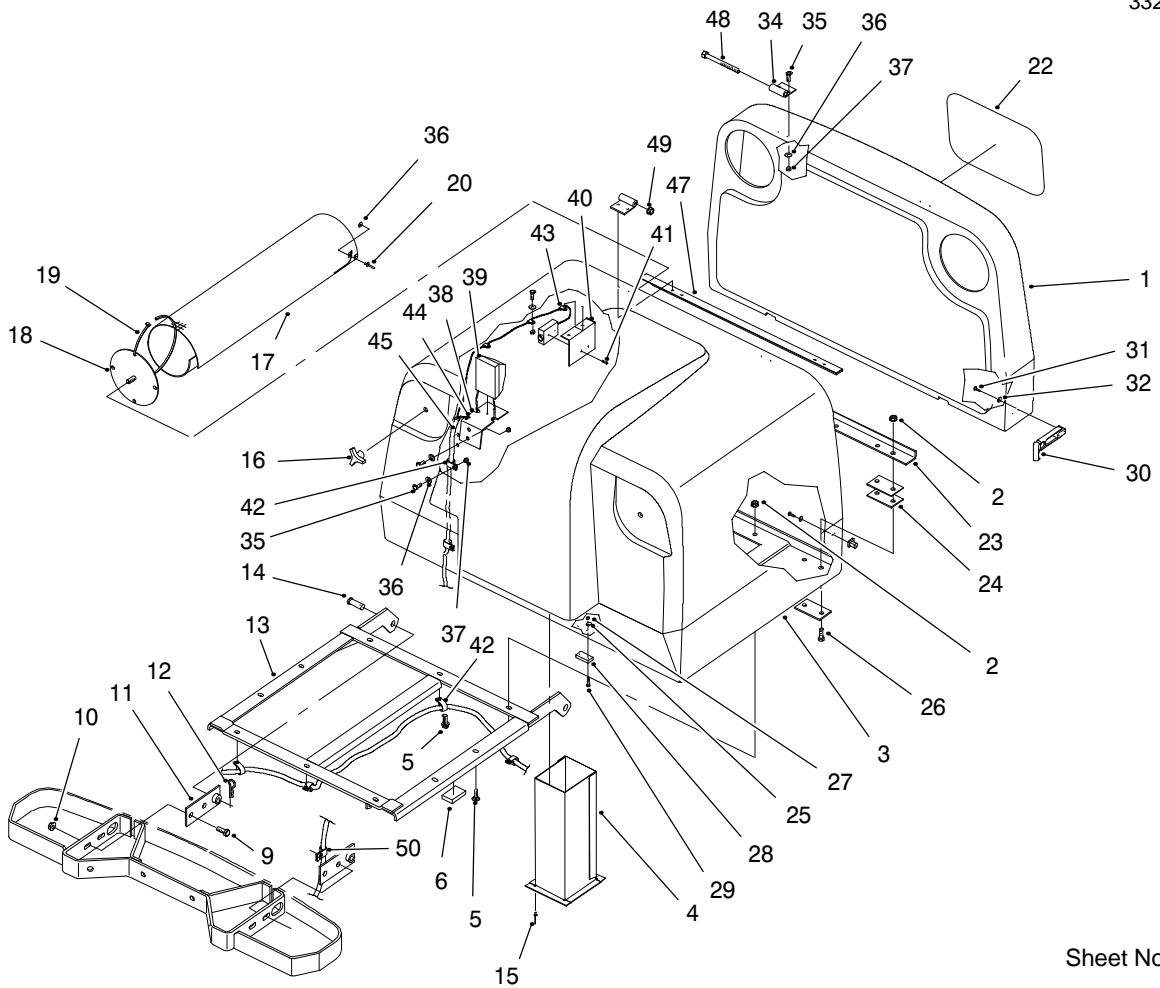


Sheet No.: 20

Blower Assembly

Ref. No.	Part No.	Qty.	Description
1	98-4392	1	Pulley-Cast
2	98-4393	1	V-Belt
3	56-4920	1	Pulley-Idler
4	32128-21	4	Nut-HF
5	95-6438	1	Pulley-Impeller
6	65-8680	1	Washer
7	3231-4	1	Bolt-CARR
8	283-2	1	Pin-Clevis
9	3290-467	1	Pin-Cotter
10	3256-3	1	Washer-Flat
11	322-6	1	Screw-HH
12	3217-6	1	Nut-Hex
14	67-1440	1	Spring-Ext
15	256-90	2	Bushing-Flange
16	95-6448	1	Spacer
17	95-6437	1	Idler Arm ASM
18	32128-25	7	Nut-Hex Flange
19	95-6435	1	Housing ASM
20	323-12	1	Screw
21	32120-8	2	Snap Ring (N5000-206)
22	251-82	2	Bearing-Ball
23	95-6427	1	Spacer-Bearing
24	98-4391	1	Impeller ASM
25	95-6436	1	Cover ASM
27	322-29	2	Screw-HH

Ref. No.	Part No.	Qty.	Description
28	95-4345	1	Impeller Chute ASM
29	323-4	1	Screw-HH
30	98-0824	4	Strip-Foam
31	323-5	1	Screw-HH
32	67-7490	1	Key
35	10-7070	1	Key-Sq
36	3242-4	2	Screw-Set



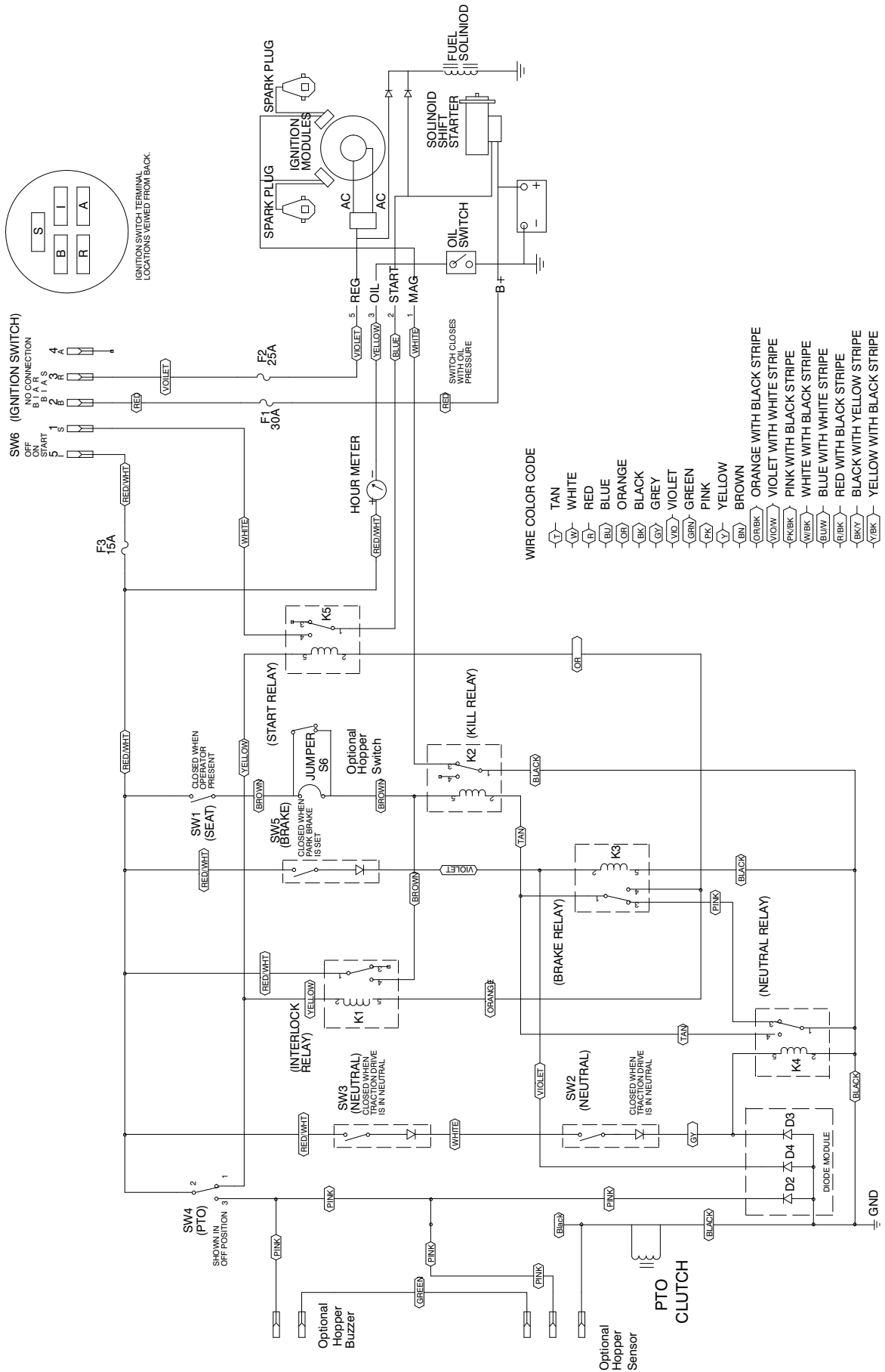
Sheet No.: 22

Grass Bin And Chute Assembly

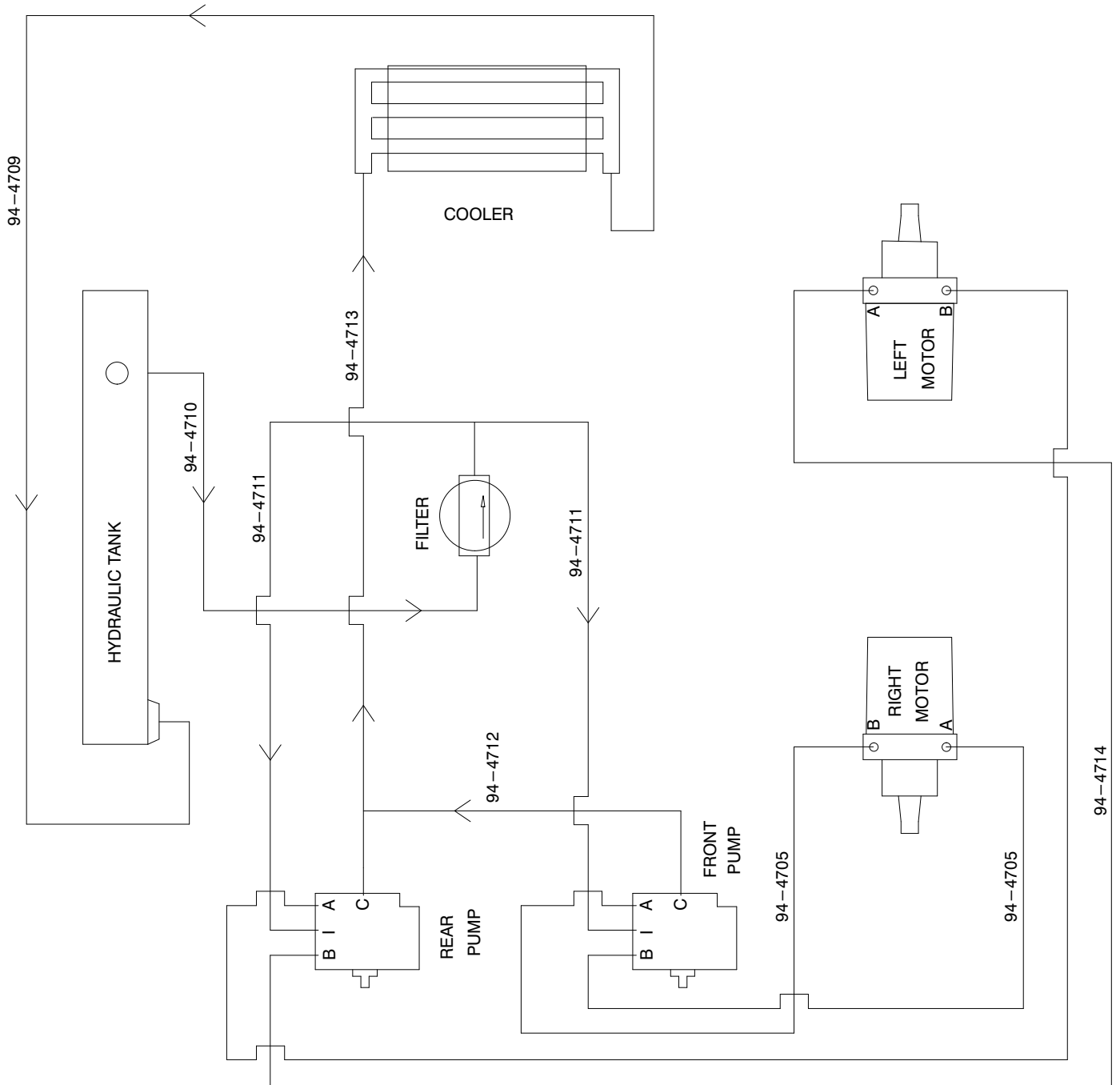
Ref. No.	Part No.	Qty.	Description
1	95-6423	1	Cover-Bin
2	32128-25	14	Nut-Hex Flange
3	95-6422	1	Bin-Grass
4	95-6482	1	Chute ASM
5	3234-17	10	Screw-Hfh
6	98-3031	2	Cushion
9	323-6	4	Screw-HH
10	32128-21	4	Nut-HF
11	95-6431	2	Pivot ASM
12	3290-355	2	Pin-Hair
13	95-6418	1	Frame ASM
14	283-68	2	Pin-Clevis
15	98-7310	4	Rivet
16	233-52	2	Knob-Black
17	95-6441	2	Screen
18	95-6444	2	Plate ASM
19	3290-378	8	Tie-Cable
20	3290-412	8	Pop Rivet
22	67-7310	1	Decal-Toro Logo
23	98-0849	1	Flange-Bin
24	98-3004	6	Spacer
25	3256-12	2	Washer-Flat
26	322-6	4	Screw-HH
27	3296-9	2	Nut-Lock
28	98-3006	1	Actuator
29	3290-124	2	Screw-HH

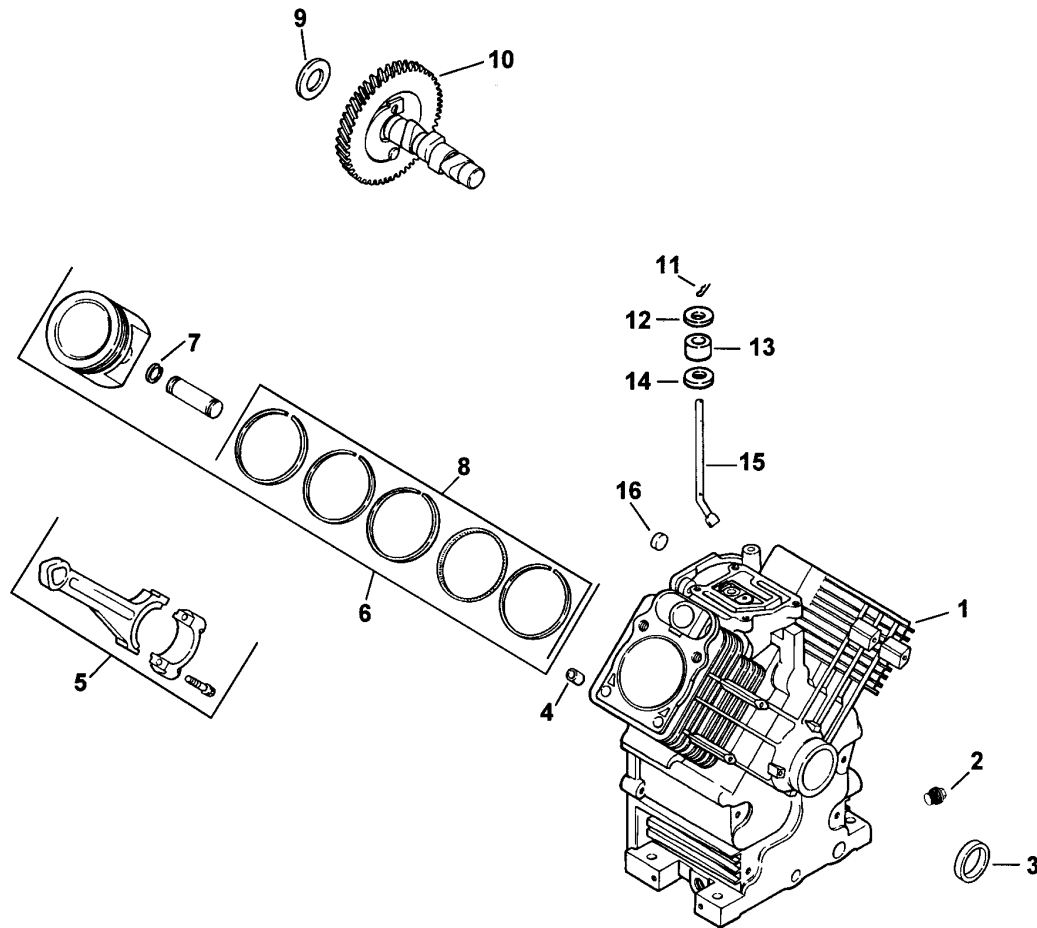
Ref. No.	Part No.	Qty.	Description
30	94-5626	2	Latch-Draw
31	3290-359	6	Screw-Rd
32	3256-21	6	Washer-Flat
34	98-3027	4	Hinge
35	321-4	16	Screw-HH
36	3256-22	20	Washer-Flat
37	3296-42	16	Nut-Lock
38	98-3000	1	Bracket-Receiver
39	98-2367	1	Module-Obstruction Detec
40	98-3001	1	Bracket-Emitter
41	3250-19	4	Screw-Phm
42	2412-93	6	R-Clamp
43	2412-127	3	Clip
44	3290-381	3	Tie-Cable
45	98-3009	1	Conduit-Convuluted
47	98-3036	1	Angle-Bin
48	3274-102	2	Screw-HH
49	3296-59	2	Nut-Lock
50	2412-138	1	Clamp-R

Electric Schematic



Hydraulic Schematic

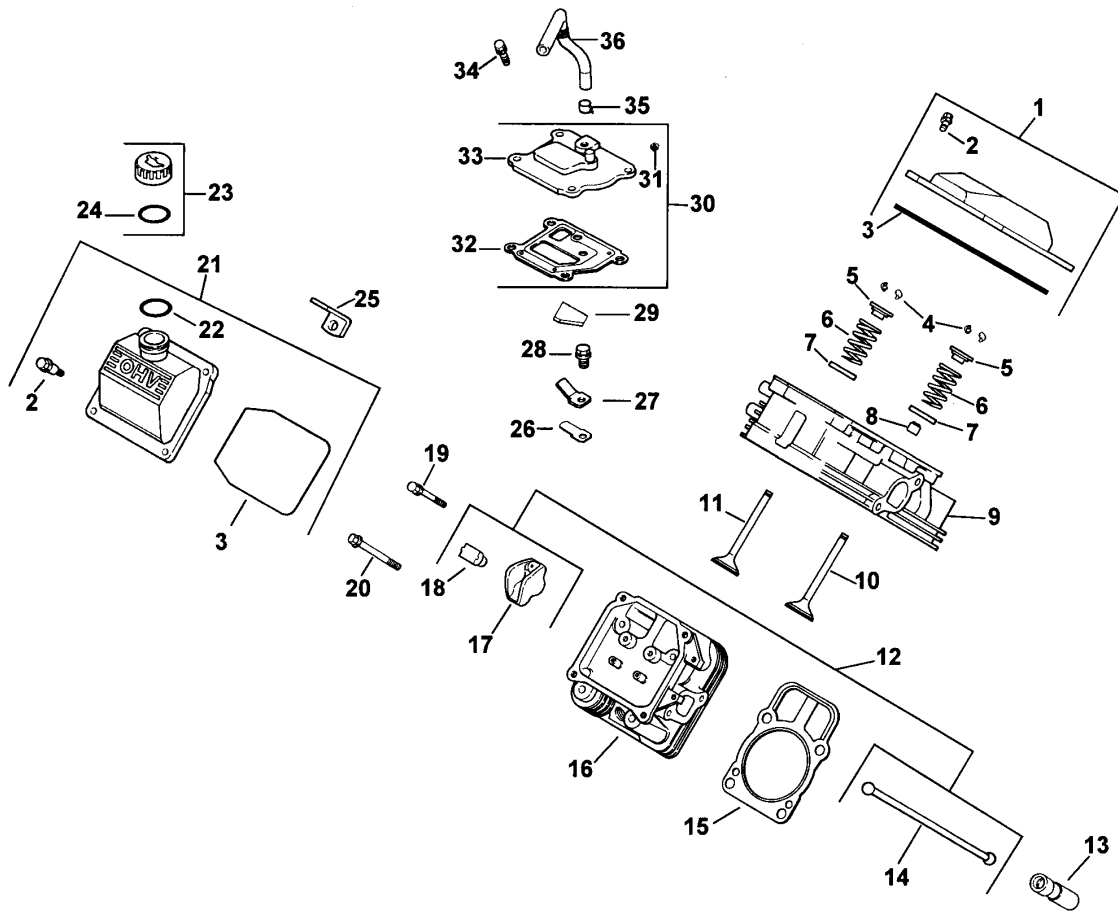




Crankcase

Ref. No.	Description	Part No.	Ref. No.	Description	Part No.
1.	Cylinder Block (USE: Miniblock	24 782 01	15.	Shaft, governor cross	24 144 01
2.	Plug, hex. head 3/8 (2)	X-75-10	16.	Plug, cup	52 139 09
3.	Seal, oil front	24 032 01			
4.	Pin, dowel locating (6)	12 380 17			
5.	Connecting Rod (Std.) (2)	24 067 09			
	Connecting Rod (.25) (2)	24 067 10			
6.	Piston w/Ring Set (Std.) (2)	24 874 01			
	Piston w/Ring Set (.25) (2)	24 874 02			
	Piston w/Ring Set (.50) (2)	24 874 03			
7.	Retainer, piston pin (4)	24 018 01			
8.	Ring Set (Std.) (2)	24 108 01			
	Ring Set (.25) (2)	24 108 02			
	Ring Set (.50) (2)	24 108 03			
9.	Shim, camshaft (A.R.) red	12 422 09			
	Shim, camshaft (A.R.) black	12 422 13			
	Shim, camshaft (A.R.) white	12 422 07			
	Shim, camshaft (A.R.) blue	12 422 08			
	Shim, camshaft - yellow	12 422 10			
	Shim, camshaft (A.R.) green	12 422 11			
	Shim, camshaft (A.R.) gray	12 422 12			
10.	Camshaft	24 012 05			
11.	Pin, hitch	12 380 04			
12.	Washer, flat	M-0631005			
13.	Seal, governor cross shaft	12 032 01			
14.	Washer, plain 1/4	X-25-102			

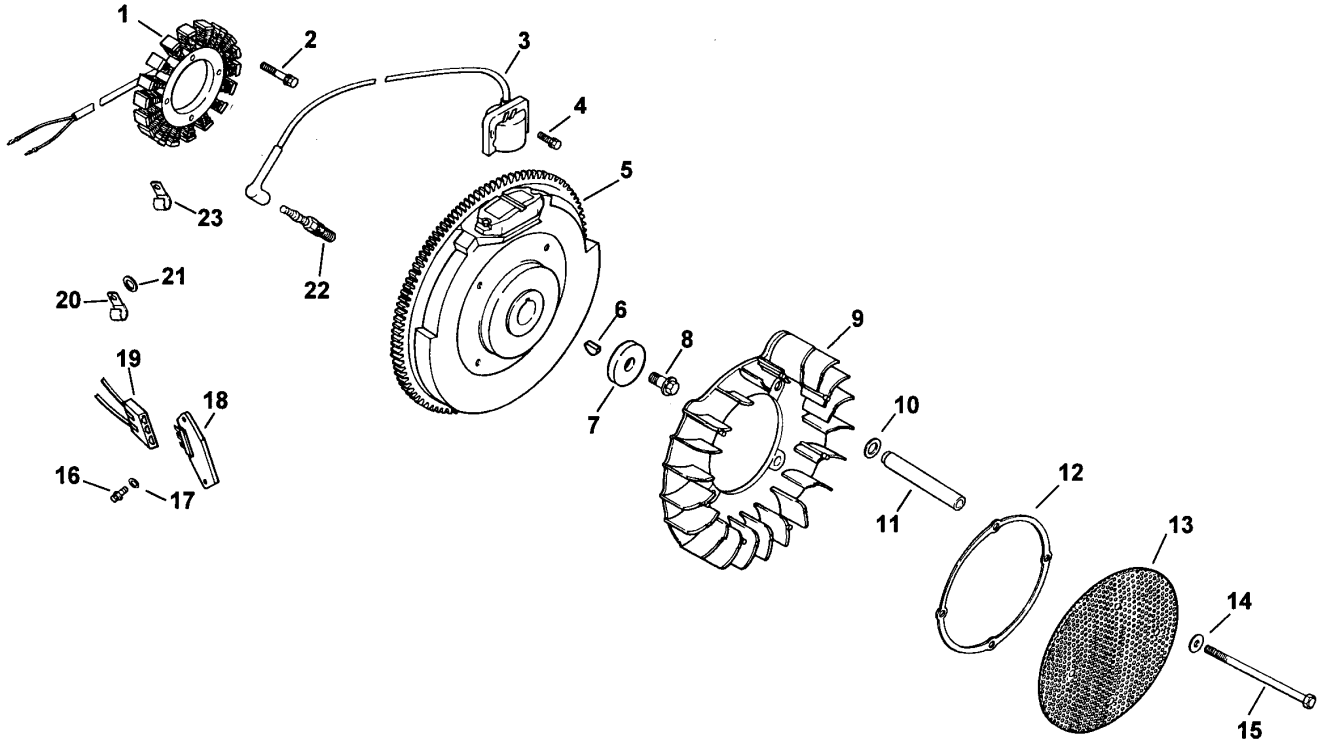
Kohler Engine CH20S 64582
Obtain Parts From Kohler



Head / Valve / Breather

Ref. No.	Description	Part No.	Ref. No.	Description	Part No.
1.	Kit, valve cover – plain (Incl. 2-3)	24 755 74	21.	Kit, valve cover – oil fill (Incl. 2,3,22)	24 755 75
2.	Screw, shoulder (4)	24 086 32	22.	O-Ring	24 153 09
3.	O-Ring, valve cover	24 153 16	23.	Kit, oil fill cap (Incl. 24)	24 755 46
4.	Kit, retainer (4)	12 755 03	24.	O-Ring, oil fill cap	24 153 03
5.	Cap, valve spring (4)	12 173 01	25.	Strap, lifting	24 445 01
6.	Spring, valve (4)	24 089 02	26.	Reed, breather	24 402 03
7.	Retainer, spring (4)	235011	27.	Retainer, breather reed	12 018 01
8.	Seal, valve stem (2)	24 032 05	28.	Screw, hex. flange M5x0.8x10	M-0545010
9.	Head Asm, #1 cylinder	24 318 09	29.	Filter, breather	24 050 01
10.	Valve, intake (Std.) (2)	24 017 01	30.	Kit, breather (Incl. 31-33)	24 033 01
	Valve, intake (.25) (2)	24 017 02	31.	Plug, allen head 1/8 pipe	X-75-23
11.	Valve, exhaust (Std.) (2)	24 016 01	32.	Gasket, breather	24 041 23
	Valve, exhaust (.25) (2)	24 016 02	33.	Cover, breather	24 096 02
12.	Kit, valve train (Incl. 14,17,18)	24 755 66	34.	Screw, hex. flange M6x1.0x20 (4)	M-0645020
13.	Lifter, valve (4)	12 351 02	35.	Clamp, breather	X-426-9
14.	Rod, push (4)	24 411 05	36.	Hose, breather	24 326 06
15.	Gasket, cylinder head (2)	24 041 08			
16.	Head Asm, #2 cylinder	24 318 10			
17.	Arm, rocker (4)	25 186 01			
18.	Pivot, rocker arm (4)	24 599 01			
19.	Screw, hex. flange M6x1.0x34 (4)	M-0640034			
20.	Screw, hex. flange M10x1.5x90 (8)	12 086 16			

Kohler Engine CH20S 64582
Obtain Parts From Kohler

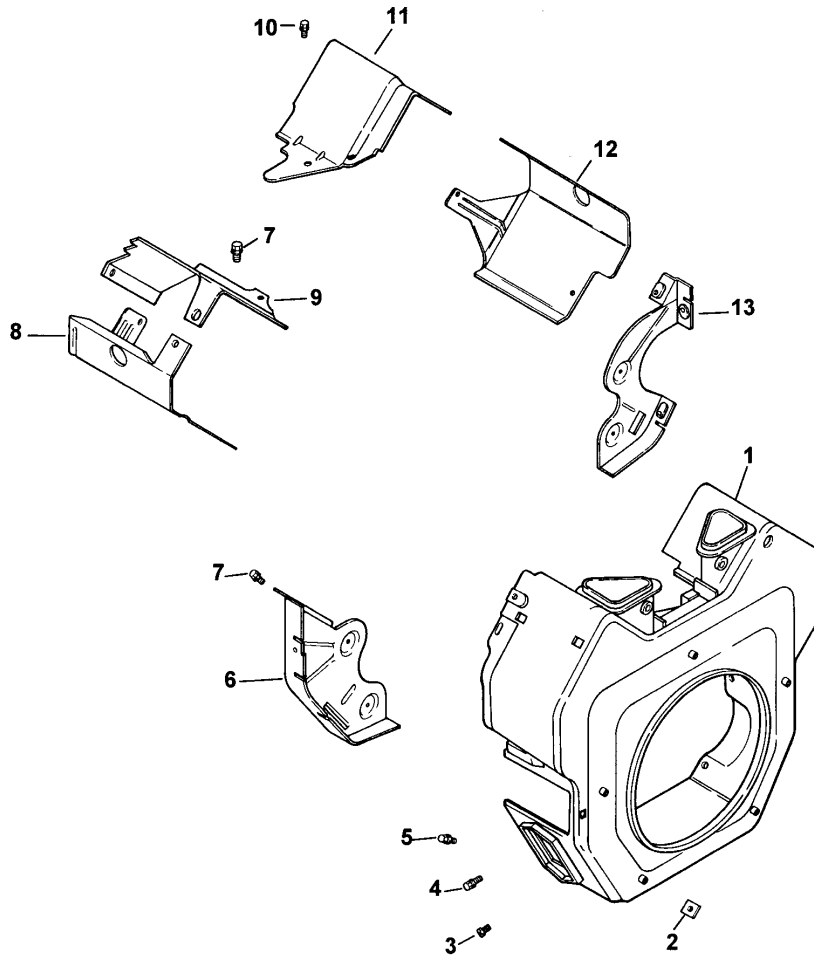


Ignition / Electrical

Ref. No.	Description	Part No.
1.	Stator – 15 amp	24 085 03
2.	Screw, hex. cap M5x0.8x25 (2)	M-0548025
3.	Module, ignition (2)	24 584 01
4.	Screw, hex. flange (4)	M-0545020
5.	Flywheel	24 025 01
6.	Key	X-42-15
7.	Washer, plain 3/8	12 468 03
8.	Screw, hex. flange M10x1.5x46	12 086 14
9.	Fan	24 157 03
10.	Washer, spring 10 mm (4)	24 468 11
11.	Spacer, grass screen (4)	24 112 14
12.	Ring, support	24 141 06
13.	Screen, grass	24 162 25
14.	Washer, plain (4)	X-25-53
15.	Screw, hex. cap M6x1.0x100 (4)	M-0603100

Ref. No.	Description	Part No.
16.	Screw, phillips hd. 1 1-16x7/8 (2)	24 086 18
17.	Washer, plain 3/16 (2)	X-25-92
18.	Rectifier-regulator 15 amp	25 403 03
19.	Connector	236602
20.	Clip, cable	235173
21.	Washer, plain 1/4	X-25-63
22.	Spark Plug (2)	12 132 02
23.	Clip, cable	48 154 02
	Lead, black, (4" – 18 gauge – insulated grip barrel eyelet terminals)	25 518 28
	Harness, wiring	24 176 40
	Bracket, stator wire	24 126 71
	Screw, set (adjusts grass scraper blade)	25 086 43
	Washer, plain ground	X-25-63

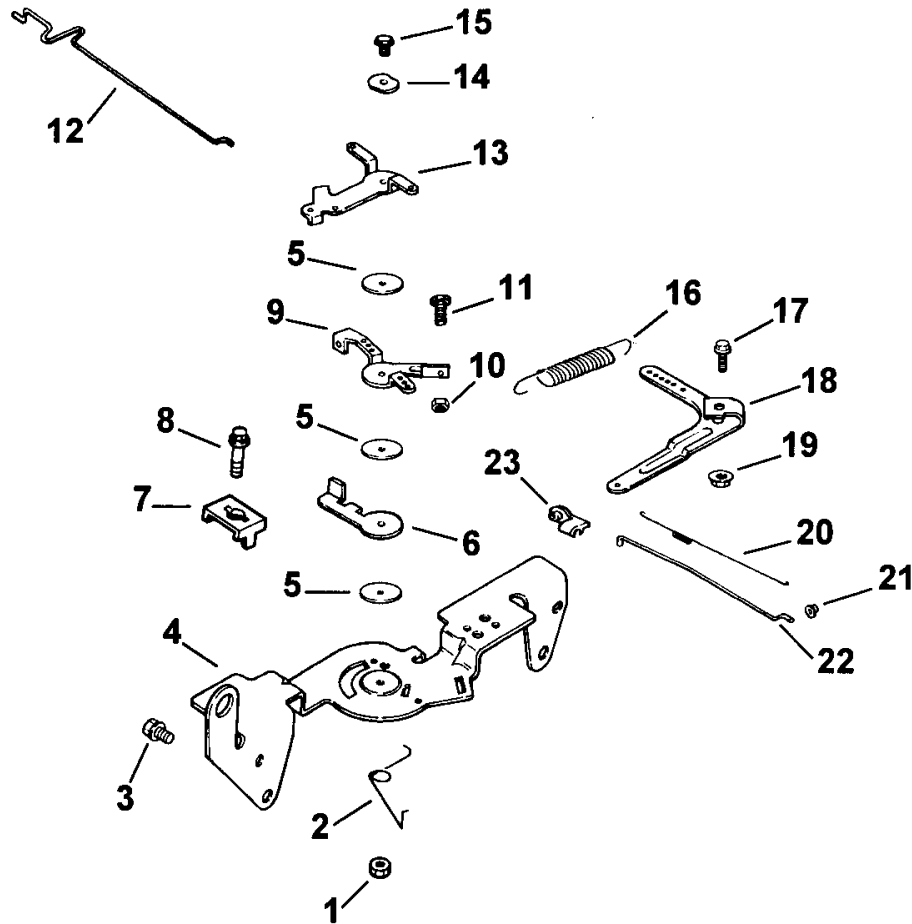
Kohler Engine CH20S 64582
Obtain Parts From Kohler



Blower Housing And Baffles

Ref. No.	Description	Part No.	Ref. No.	Description	Part No.
1.	Housing, blower	54 027 03			
2.	Nut, plastic (2)	24 100 01			
3.	Screw, hex. flange M5x0.8x16	M-0551016			
4.	Screw, hex. flange (5) M5x0.8x16	M-0545016			
5.	Screw, hex. flange (2) M5x0.8x20	M-0545020			
6.	Plate, backing - #2 side	24 146 02			
7.	Screw, hex. flange M6x1.0x16 (6)	M-0645016			
8.	Baffle, cyl. barrel - #2 side	24 063 20			
9.	Baffle, valley - #2 side	24 063 17			
10.	Screw, hex. flange M5x0.8x10 (2)	M-0545010			
11.	Baffle, valley - #1 side	24 063 24			
12.	Baffle, cyl. barrel - #1 side	24 063 30			
13.	Plate, backing - #1 side	24 146 08			
	Decal, HP	24 113 12			

Kohler Engine CH20S 64582
Obtain Parts From Kohler

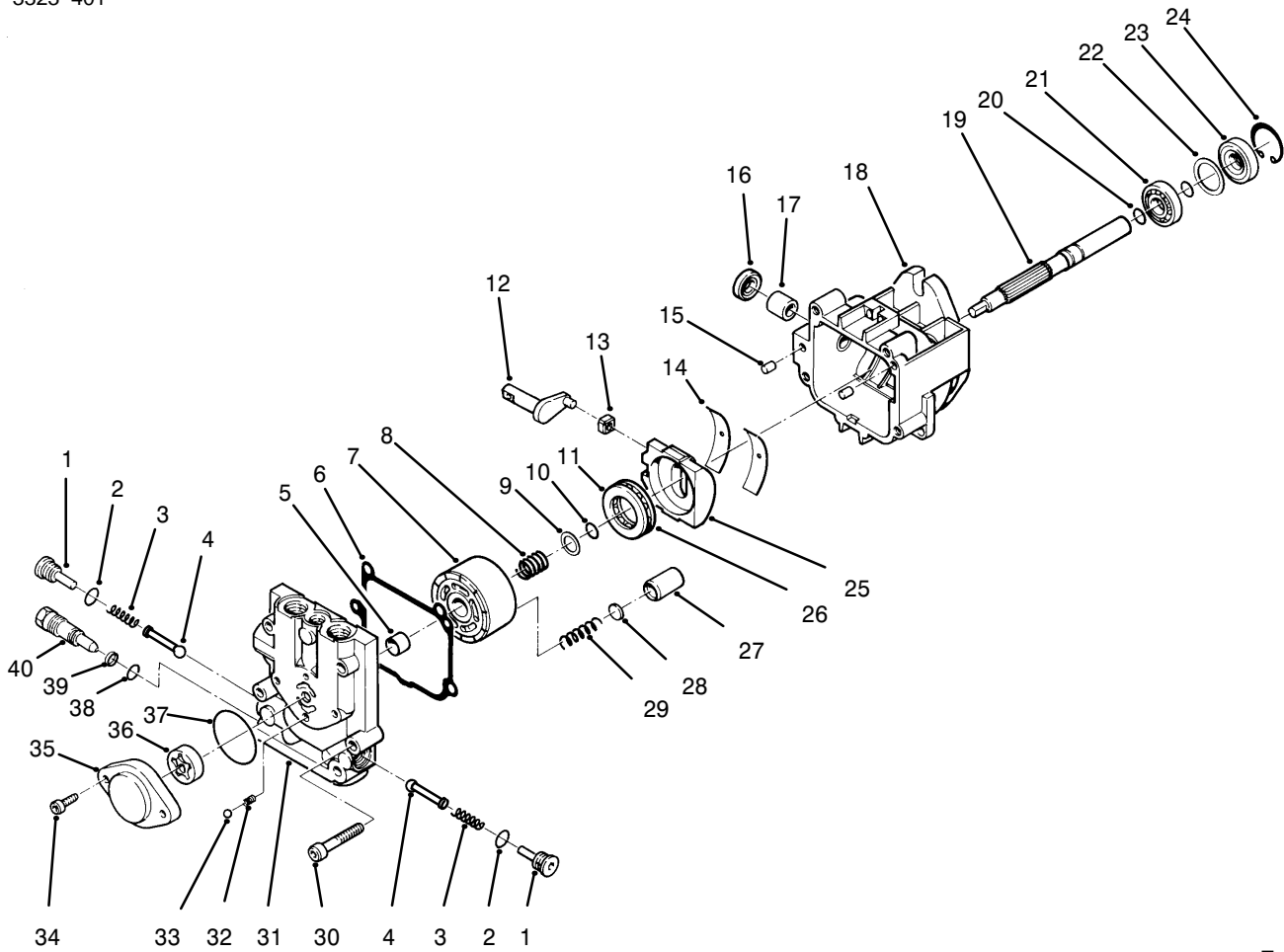


Engine Controls

Ref. No.	Description	Part No.
1.	Nut, hex. lock M5x0.8	M-0547050
2.	Spring, choke return	24 089 03
3.	Screw, hex. flange M6x1.0x16	(4) M-0645016
4.	Bracket, control	24 126 56
5.	Washer, plain 5.5mm (3)	24 468 01
6.	Lever, throttle actuator	24 090 07
7.	Clamp, cable (2)	12 237 01
8.	Screw, hex. flange M5x0.8x16	M-0545016
9.	Lever, throttle control	24 090 03
10.	Nut, hex M4x0.7	M-0446030
11.	Screw, hex. cap M4x0.7x30	M-0401030
12.	Linkage, choke	24 079 02
13.	Lever, choke	24 090 05
14.	Washer, spring 1/4	41 468 03
15.	Screw, hex. flange M5x0.8x20	M-0545020
16.	Spring, governor	24 089 18
17.	Screw, hex. flange M6x1.0x25	SM-064205
18.	Lever, governor	24 090 14
19.	Nut, hex. flange M6x1.0	M-0641060
20.	Spring, linkage	24 089 01
21.	Bushing, linkage retaining	25 158 08
22.	Linkage, throttle	24 079 01
23.	Bushing, linkage retaining	25 158 11

Ref. No.	Description	Part No.

Kohler Engine CH20S 64582
Obtain Parts From Kohler



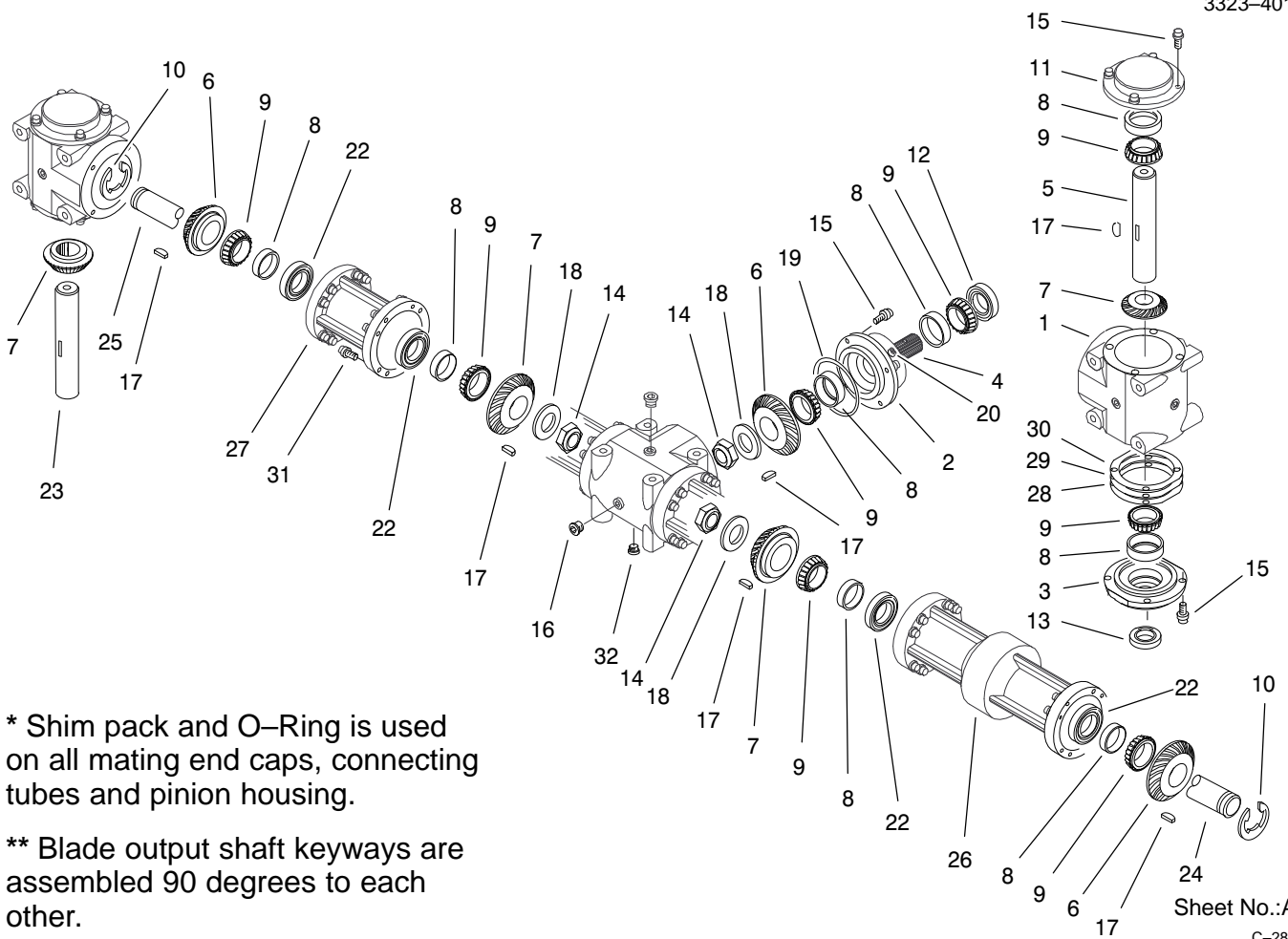
T-1236

Hydraulic Pump Assembly No. 98-4374 & 98-4375

Ref. No.	Part No.	Qty.	Description
1	80-6120	1	Check Valve Kit (Incl. Ref. #2-4)
2		2	Seal - O-Ring
3		2	Spring
4		2	Poppet
5		1	Journal - Bearing
6		1	Gasket - End Cap
7		1	Cylinder Block Kit (Incl. Ref. #8-10 & 27-29)
8		1	Spring
9		1	Washer
10		1	Ring - Retaining
11		1	Plate - Thrust
12		1	Arm - Trunnion
13		1	Guide - Slot
14		2	Cradle - Bearing
15		2	Pin
16		1	Seal - Lip
17		1	Journal - Bearing
18		1	Housing - Assembly (Incl. Ref. #16 & 17)
19		1	Shaft
20		2	Ring - Retaining
21		1	Bearing - Ball
22		1	Spacer

Ref. No.	Part No.	Qty.	Description
23		1	Seal - Lip
24		1	Ring - Retaining
25		1	Swashplate Assembly
26		1	Roller - Thrust
27		5	Piston
28		5	Washer - Thrust
29		5	Spring - Piston
30		4	Screw
31		1	End Cap Assembly (Incl. Ref. #5)
32		1	Ball
33		1	Spring
34		2	Screw
35		1	Housing - Charge Pump
36		1	Gerotor Assembly
37		1	Seal - O-Ring
38		1	Seal - O-Ring
39		1	Ring - Back-Up
40		1	Valve - Bypass
*	80-6110	1	Charge Relief Valve Kit (Incl. Ref. #32-33)
*	80-6130	1	Overhaul Seal Kit (Incl. Ref. #6, 10, 16, 20, 23 & 37-39)

*Not Illustrated



* Shim pack and O-Ring is used on all mating end caps, connecting tubes and pinion housing.

** Blade output shaft keyways are assembled 90 degrees to each other.

Sheet No.:A1
C-2839

Gear Box Assembly No. 99-0282

Ref. No.	Part No.	Qty.	Description
1	100-4564	3	Case
2	100-4565	1	Housing - Pinion
3	100-4566	2	Cap - End, Open
4	100-4567	1	Shaft - Input, Splined
5	100-4568	1	Shaft - Cross, A/D
6	100-4569	3	Gear - LH, 27 Tooth
7	100-4570	4	Gear - RH, 29 Tooth
8	100-4571	10	Bearing - Cup
9	100-4572	10	Bearing - Cone
10	100-4573	2	Ring - Retaining
11	100-4574	2	Cap - End, Closed
12	100-4575	1	Seal
13	100-4576	2	Seal
14	100-4577	3	Nut - Jam
15	100-4578	20	Screw
16	100-4579	8	Plug
17	100-4580	7	Key - Woodruff
18	100-4581	3	Washer
19	100-4582	9	O-Ring
20	100-4583	1	Plug
*	100-4584	1	Cover - Transparent
22	100-4585	4	Seal
23	100-4586	1	Shaft - Cross, B/D
24	100-4587	1	Shaft - Connecting, Long

Ref. No.	Part No.	Qty.	Description
25	100-4588	1	Shaft - Connecting, Short
26	100-4589	1	Flange - Connecting, Long
27	100-4590	1	Flange - Connecting, Short
28	100-4591	1	Shim - Brown
29	100-4592	1	Shim - Blue
30	100-4593	1	Shim - Green
31	100-4594	32	Screw
32	100-4595	1	Plug - Magnetic

* Not Illustrated

