



## Proline 21''

### Recycler<sup>®</sup> /Rear Bagging Mower

Model No. 22171-20000001 and Up

## Parts Catalog

---

### Ordering Replacement Parts

To order replacement parts, please supply: the part number, the quantity, and the description of each part desired.

### Understanding Reference Numbers

Each identified part in an illustration has a reference number. The reference number for a part also appears in the parts list, along with other information about the part.

This catalog uses two special reference number formats, one to indicate parts in a service assembly and another to indicate the quantity of a given part in an illustration.

### Service Assembly Reference Numbers

Parts in service assemblies have reference numbers in the form **a:b**. The **a** represents the reference number of the entire service assembly and the **b** represents a sequential number unique to each part within the service assembly.

For example, a wheel assembly might be identified by reference number **6**, the tire by **6:1**, the valve by **6:2**, and the wheel by **6:3**. When you order the assembly identified by reference number **6**, you receive all parts identified by reference numbers **6:1**, **6:2**, and **6:3**. However, you may also order any part individually.

Reference numbers of this type appear in illustrations and in part lists.

### Reference Numbers Indicating Quantity

In an illustration, if a reference number indicates more than one part, the reference number has the form **nX y**. The **n** represents the quantity of the part, the **X** is the multiplication symbol, and the **y** represents the reference number.

For example, in an illustration, the reference number **2X 37** means that two of the parts identified by reference number **37** are indicated.

## Contents

Description	Page	Description	Page
Housing Assembly .....	3	Carburetor .....	14
Housing Assembly (cont.) .....	4	Piston/Crankshaft .....	15
Gear Case Assembly .....	5	AirFilter/Muffler .....	16
Front Wheel & Tire Assembly .....	6	Colling Equipment .....	17
Engine & Blade Assembly .....	7	Lubrication Equipment .....	18
Cylinder/Crankcase .....	8	Starter .....	19
Valve/Camshaft .....	9	Handle & Controls Assembly .....	20
Control Equipment .....	10	Rear Axle Assembly .....	21
Brake/Cover .....	11	Rear Wheel & Tire Assembly .....	22
Fuel Tank/Fuel Valve .....	12	Bagging Assembly .....	23
Electric Equipment .....	13		

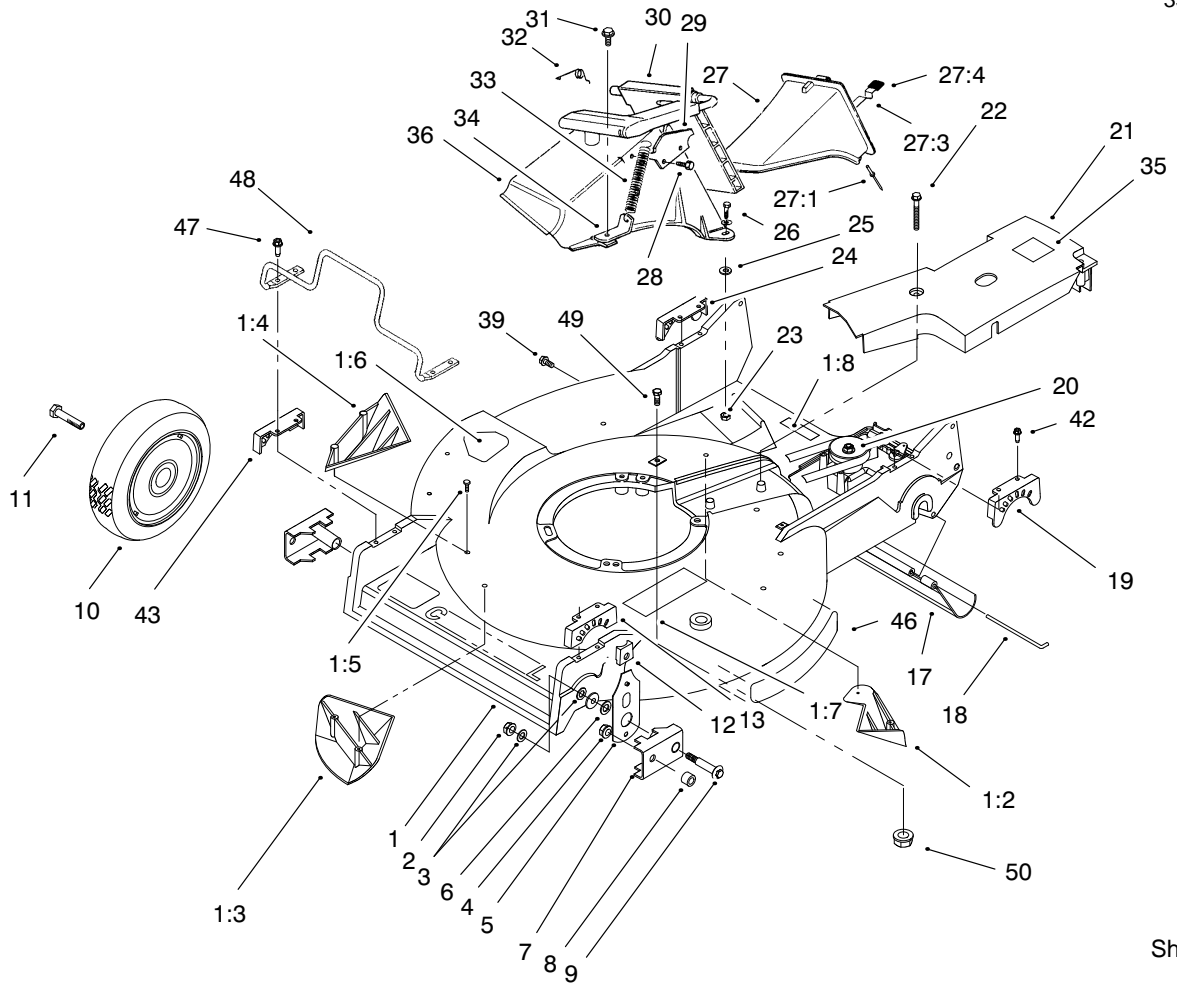
## Accessories

Description	Model / Part No.	Description	Model / Part No.
Side Discharge Kit .....	Model No. 59199		

## Part Description Abbreviations

Part descriptions in this catalog may include the following abbreviations.

Abbreviation	Meaning	Abbreviation	Meaning
AR .....	as required	INC .....	incorporated
ASM .....	assembly	LH .....	left hand
CARR .....	carriage	NI .....	nylon insert
DEG .....	degrees	PPH .....	Phillips pan head
FH .....	flat head	PTH .....	Phillips truss head
GA .....	gauge	PTO .....	power take off
HF .....	hex flange	RH .....	right hand
HH .....	hex head	SFH .....	slotted fillister head
HHF .....	hex head flange	SHH .....	slotted hex head
HLH .....	hex lag head	SQH .....	square head
HJ .....	hex jam	SHWH .....	slotted hex washer head
HOC .....	height-of-cut	SPH .....	slotted pan head
HS .....	hex socket	SRH .....	slotted round head
HSBH .....	hex socket button head	STD .....	standard
HSFH .....	hex socket flat head	TAP .....	self tapping
HSH .....	hex socket head	TTH .....	Torx truss head
HWH .....	hex washer head	WH .....	wing head
HWHTF .....	hex washer head thread forming		

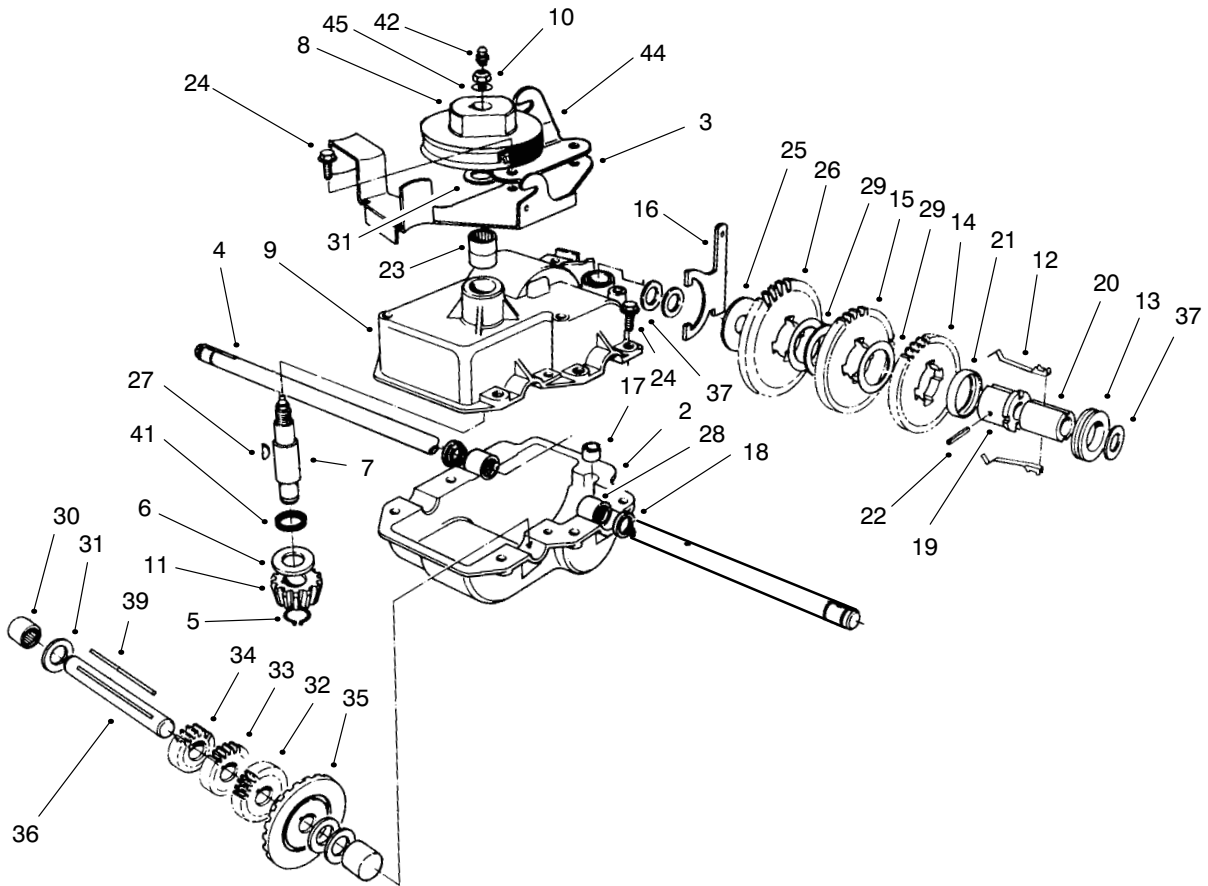


Sheet No.:2

## Housing Assembly

Ref. No.	Part No.	Qty.	Description	Ref. No.	Part No.	Qty.	Description
1	98-7139	1	Housing – Service	21	99-6298	1	Cover–Belt, Sp (Commercial)
1:2	92-1750	1	Kicker – Rear, Sp	22	37-7260	2	Screw–HH
1:3	92-1720	1	Kicker – Front	23	3296-42	2	Nut–Lock Ni
1:4	92-1730	1	Kicker – R.h.	24	49-8750	1	Quadrant–RH Rear
1:5	32144-111	6	Screw–Plask	25	3256-22	2	Washer–Flat
1:6	39-5770	1	Decal – Cut Finger	26	321-7	2	Screw–HH
1:7	93-0248	1	Decal – Safety Instruct	27	77-0500	1	Discharge Plug Assembly
1:8	92-1779	1	Decal–Warning	27:1	3295-35	1	Rivet–Alum
2	3296-6	2	Nut–Lock Ni	27:3	76-4640	1	Latch–Disc. Plug +
3	40-1940	4	Washer–Wheel Bolt	27:4	76-4650	1	Grip–Latch
4	32152-2	2	Nut–Conelock	28	46-8090	2	Screw–Plastite
5	66-7560	2	Front Spring Arm ASM	29	93-3154	1	Latch–Plate
6	257-3	2	Washer–Thrust	30	93-7351	1	ASM – Discharge Door
7	61-8300	2	Pivot Arm Wa – Front	31	46-6811	1	Screw/Washer V
8	52-2480	2	Spacer–Wheel	32	80-3770	1	Spring–Door Ret
9	27-6232	2	Bolt–Wheel	33	76-4660	1	Spring–Door
10	53-7720	2	Wheel & Tire ASM	34	71-9350	1	Bracket–Spring
11	323-12	2	Screw–HH	35	52-2620	1	Label–Sp Grease
12	25-7740	2	Knob–Arm	36	82-9152	1	Tunnel–Discharge
13	49-8760	1	Quadrant–LH Front	39	46-6810	1	Screw & Washer ASM
17	44-0580	1	Shield – Trailing	42	49-2040	4	Screw–Taptite
18	33-3208	1	Rod–Shield	43	49-8770	1	Quadrant–RH Front
19	49-8740	1	Quadrant–LH Rear	46	92-7988	1	Decal – Recycler
20	74-1861	1	Gear Case ASM (Service)				



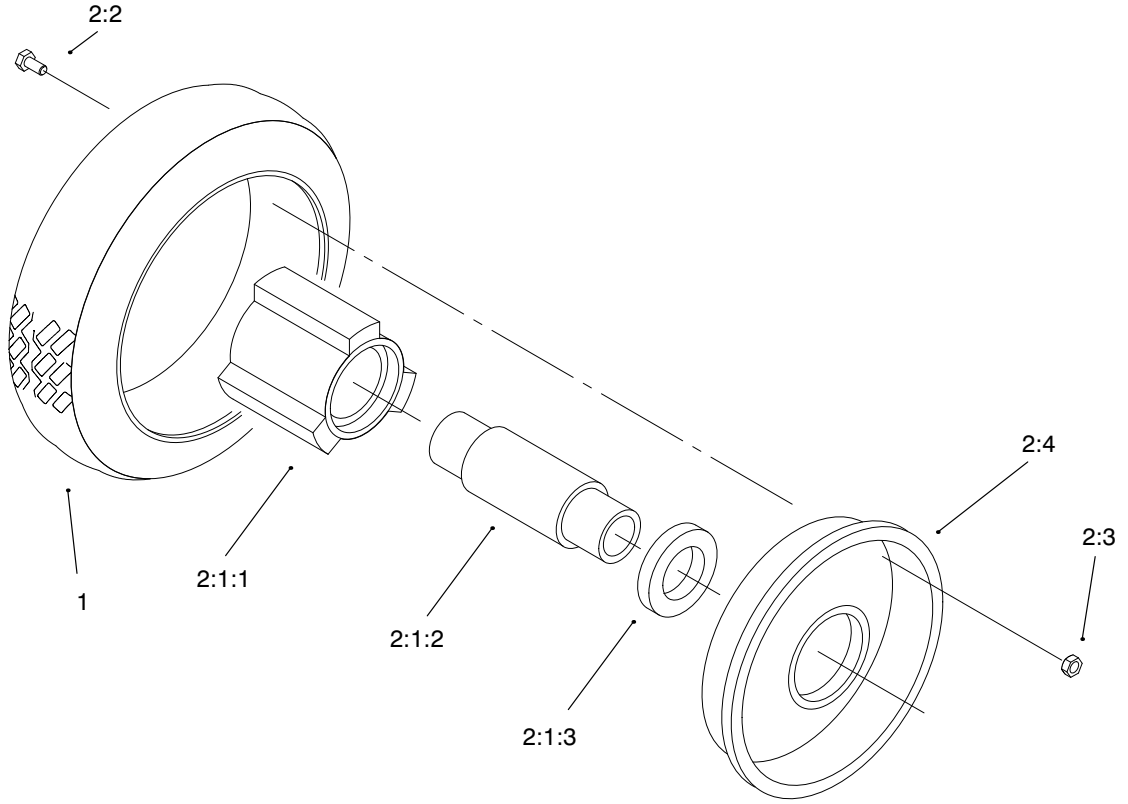


Sheet No.:2a

## Gear Case Assembly

Ref. No.	Part No.	Qty.	Description	Ref. No.	Part No.	Qty.	Description
2	74-1920	2	Case-Lower Gear	28	48-2060	4	Bearing-Roller
3	49-8461-03	1	Bracket-Belt Guide	29	36-4770	6	Washer
4	74-1890	2	Shaft-Output	30	252-103	4	Bearing-Closed
5	32151-57	2	Ring-Retaining	31	36-4792	8	Washer-Thrust
6	47-2910	2	Washer-Thrust	32	39-6650	2	Gear-18t
7	13-5149	1	Input Shaft w/Zerk	33	46-3550	2	Gear
8	39-6740	2	Pulley	34	46-3540	2	Gear
9	74-1880	2	Case-Upper Gear	35	74-1760	2	Gear-Bevel
10	3296-5	2	Nut-Lock Ni	36	53-7950	2	Shaft-Intermediate
11	39-6660	2	Pinion-Bevel	37	36-4780	6	Washer
12	29-9330	4	Key	39	39-7842	2	Key
13	29-9340	2	Collar-Shift	41	47-7260	2	Seal
14	42-4740	2	Gear-38 Tooth	42	302-63	2	Zerk
15	29-9271	2	Gear-42 Tooth	44	74-1750-03	1	Brk-Traction Engage
16	60-8870	2	Yoke-Shift	45	3256-45	2	Washer-Flat
17	29-9570	2	Bushing-Yoke	*	74-1861	1	Gear Case ASM (Service)
18	47-6730	4	Seal-Oil				
19	55-8010	2	Sleeve-Gear				
20	39-6720	2	Sleeve				
21	55-8020	2	Retainer-Key				
22	3285-19	2	Pin-Groove				
23	47-7270	4	Bearing				
24	49-2040	14	Screw-Taptite				
25	29-9690	2	Washer				
26	46-3560	2	Gear				
27	3257-1	4	Key-Woodruff				

\* Not illustrated



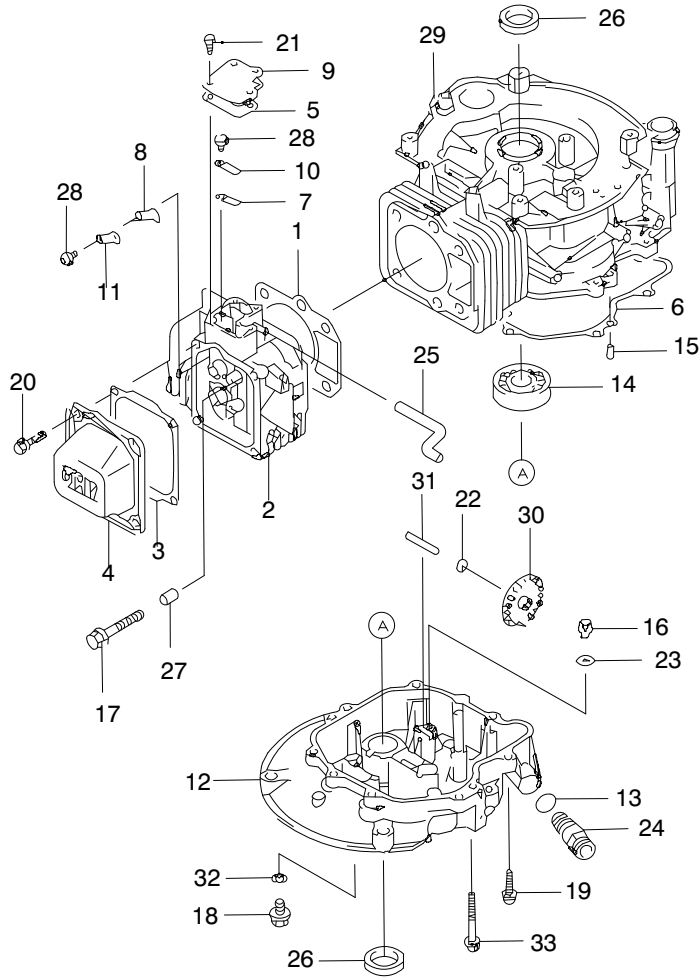
Sheet No.:2b

## Front Wheel & Tire Assembly

Ref. No.	Part No.	Qty.	Description
1	53-7740	1	Tire
2		1	Wheel ASM HP
2:1		1	Hub & Brg ASM
2:1:1	52-2410	1	Hub-Bearing Supt
2:1:2	52-2440	1	Spacer-Bearing
2:1:3	52-2450	2	Bearing-Wheel
2:2	321-2	4	Screw-HH
2:3	3296-42	4	Nut-Lock Ni
2:4	53-7780-06	2	Plate-Wheel Half

Ref. No.	Part No.	Qty.	Description





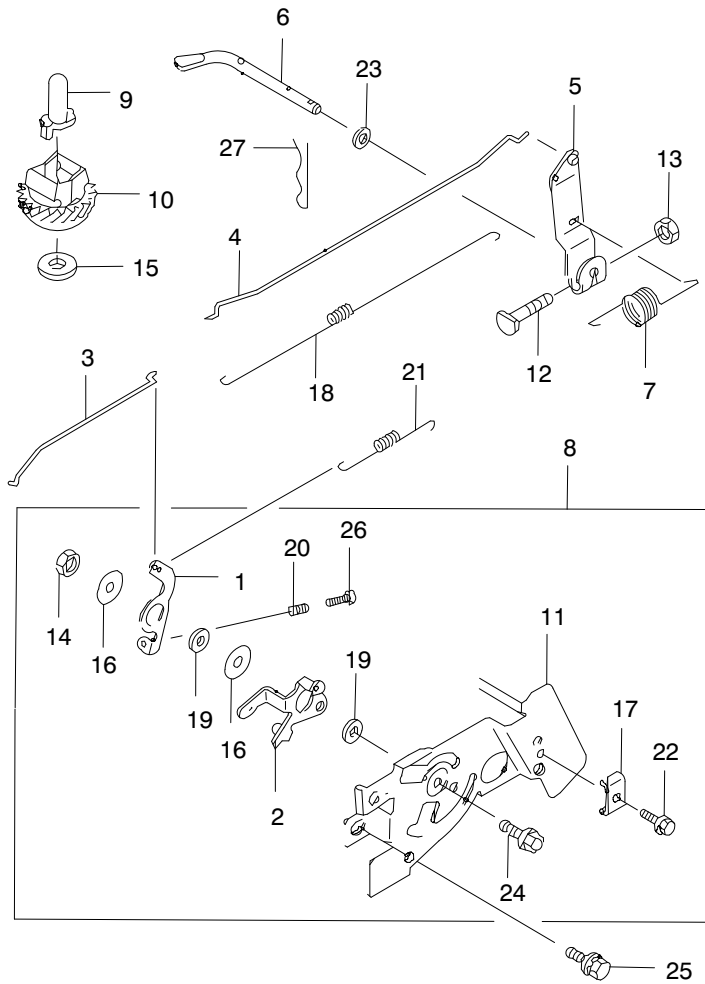
Sheet No.:3a

### Cylinder/Crankcase

Ref. No.	Part No.	Qty.	Description
1	100-2742	1	Gasket-Head
2	100-2743	1	Head-Complete-Cylinder
3	100-2744	1	Gasket Rocker Case
4	100-2745	1	Case-Rocker
5	100-2746	1	Gasket Cover
6	100-2747	1	Gasket Crankcase Cover
7	100-2748	1	Plate
8	100-2749	1	Plate
9	100-2779	1	Cover
10	100-2780	1	Valve
11	100-2781	1	Valve
12	100-2782	1	Cover-Crankcase
13	100-2840	1	O-Ring
14	100-2841	1	Ball Bearing
15	93-8516	2	Pin
16	100-2842	1	Bolt Upset Wsp
17	Kw10035	4	Bolt, Flanged 8x45
18	Kw10033	1	Bolt, Flanged 8x12
19	100-2610	6	Bolt Flanged
20	100-2804	4	Bolt-Flanged
21	100-2609	4	Bolt Flanged
22	100-2843	1	Washer 6x12x1.6
23	100-2844	1	Washer 5x16x0.8
24	100-2854	1	Plug

Ref. No.	Part No.	Qty.	Description
25	100-2846	1	Tube
26	100-2847	2	Seal Oil
27	100-2848	2	Pin
28	93-8549	2	Screw
29	100-2849	1	Crankcase Complete
30	99-6728	1	Oil Slinger
31	99-6729	1	Shaft
32	99-6730	1	Gasket
33	100-2855	1	Bolt Flanged





Sheet No.:3c

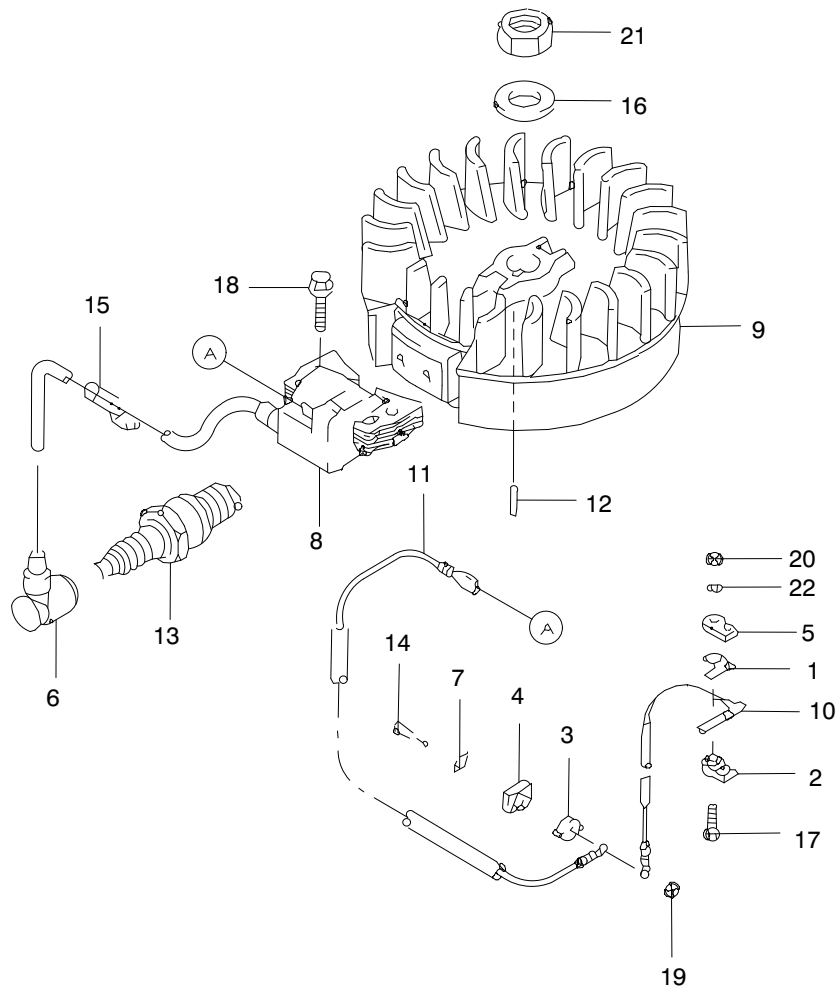
## Control Equipment

Ref. No.	Part No.	Qty.	Description
1	100-2700	1	Lever
2	100-2701	1	Lever
3	100-2702	1	Link-choke
4	100-2703	1	Link
5	100-2704	1	Arm-ASM
6	100-2705	1	Arm-Pivot
7	100-2706	1	Spring-Governor
8	100-2707	1	Panel-ASM Control
9	100-2708	1	Sleeve
10	93-8611	1	Governor ASM
11	100-2710	1	Panel-Control
12	93-8608	1	Bolt
13	93-8631	3	Nut
14	93-8595	1	Nut
15	94-6842	1	Washer
16	100-2715	2	Washer 6x9x1.2
17	95-9849	1	Clamp
18	100-2717	1	Spring Link
19	100-2718	2	Collar 6x13x2.3
20	93-8588	1	Spring
21	100-2720	1	Spring
22	95-9853	1	Bolt
23	93-8608	1	Washer
24	95-9837	1	Bolt - Flanged
25	100-2724	2	Bolt-Upset-Wsp

Ref. No.	Part No.	Qty.	Description
26	100-2725	1	Screw-Pan
27	93-8607	1	Pin-Snap



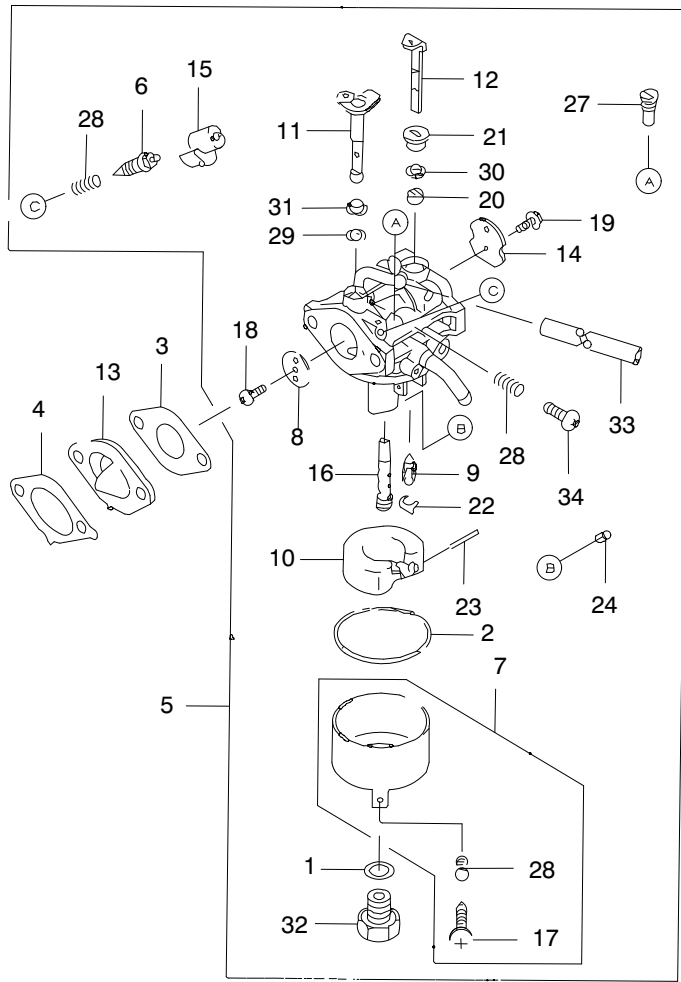




Sheet No.:3f

## Electric Equipment

Ref. No.	Part No.	Qty.	Description	Ref. No.	Part No.	Qty.	Description
1	100-2650	1	Plate				
2	100-2651	1	Cover				
3	100-2652	1	Cover				
4	100-2653	1	Insulator				
5	100-2654	1	Insulator				
6	Kw10087	1	Cap Plug				
7	100-2656	1	Terminal				
8	100-2657	1	Coil ASM Ignition				
9	100-2658	1	Flywheel Complete				
10	100-2659	1	Wire Lead				
11	100-2660	1	Wire Lead L=300mm				
12	93-8571	1	Key				
13	Kw10676	1	Plug-Spark Bpr5es(Ngk)				
14	100-2663	1	Bolt 4x20				
15	100-2664	1	Clamp				
16	100-2665	1	Washer				
17	100-2666	1	Bolt Upset				
18	100-2610	2	Bolt Flanged				
19	100-2668	1	Nut Hex				
20	100-2669	1	Nut Hex				
21	93-8568	1	Nut				
22	100-2671	1	Washer Plain S				



Sheet No.:3g

## Carburetor

Ref. No.	Part No.	Qty.	Description
1	100-2611	1	Gasket
2	100-2612	1	Gasket
3	100-2613	1	Gasket Carburetor
4	100-2614	1	Gasket Insulator
5	100-2615	1	Carburetor ASM
6	100-2616	1	Screw Pilot Air
7	100-2617	1	Chamber Float
8	100-2618	1	Valve Throttle
9	100-2619	1	Valve Float
10	100-2620	1	Float
11	100-2621	1	Shaft Carburetor Throttle
12	100-2622	1	Shaft Carburetor Choke
13	100-2623	1	Insulator
14	100-2624	1	Valve
15	100-2625	1	Limiter
16	100-2626	1	Nozzle Main
17	100-2627	1	Screw
18	100-2628	1	Screw
19	100-2629	2	Screw
20	100-2630	1	Collar
21	100-2631	1	Collar
22	Kw10297	1	Clip
23	100-2633	1	Pin
24	100-2634	1	Jet Main #62.5

Ref. No.	Part No.	Qty.	Description
27	100-2635	1	Jet Pilot #37.5
28	100-2636	3	Spring
29	100-2637	1	Seal
30	100-2638	1	Seal
31	100-2639	1	Collar
32	100-2640	1	Bolt
33	100-2641	1	Tube 4x7x125
34	100-2642	1	Screw Pan

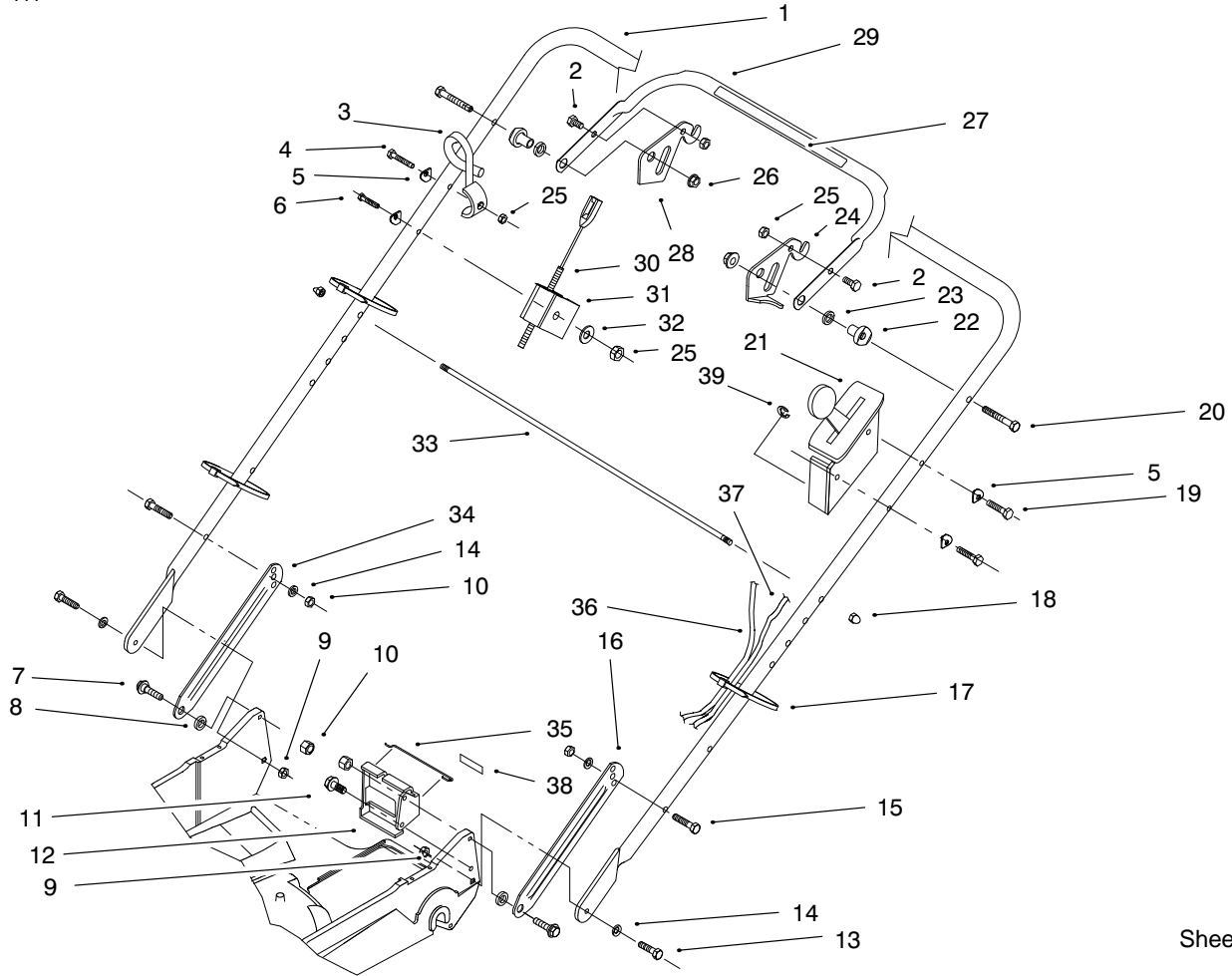












Sheet No.:4

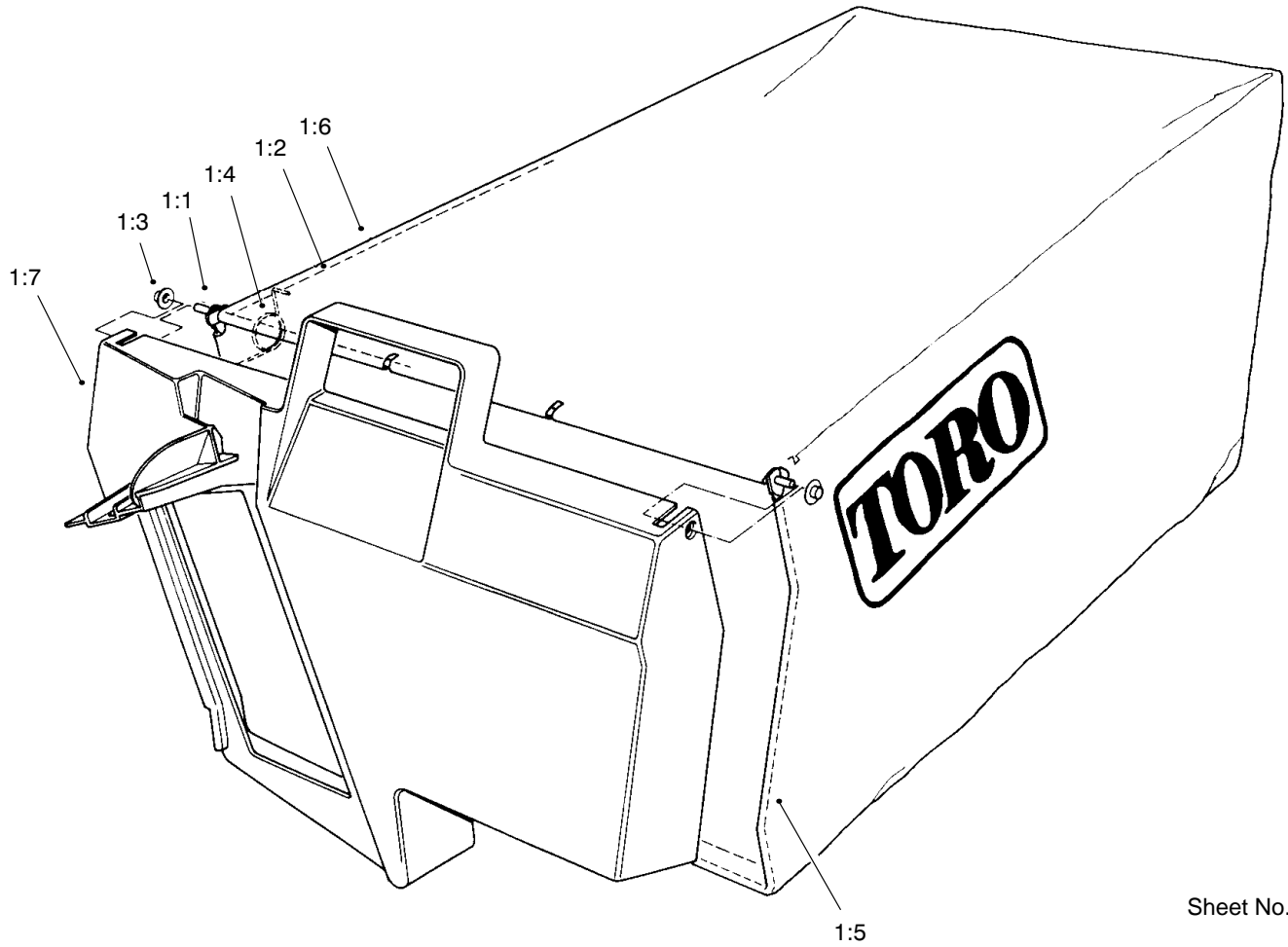
## Handle & Controls Assembly

Ref. No.	Part No.	Qty.	Description
1	98-2000-03	1	Handle
2	321-4	2	Screw-HH
3	46-8081	1	Guide-Rope
4	321-9	1	Screw-HH
5	3-7501	4	Washer
6	321-15	1	Screw-HH
7	27-7210	2	Screw-Shoulder
8	3-3287	2	Spacer-Handle Latch
9	3296-47	2	Nut-Lock Ni
10	3296-29	4	Nut-Lock Ni
11	32144-70	1	Screw-Taptite
12	74-1741-03	1	Brkt-Traction Adj.
13	322-6	2	Screw-HH
14	3290-456	4	Washer-Belleville
15	322-7	2	Screw-HH
16	100-3298-03	1	Latch-LH Handle
17	3290-378	4	Tie-Cable
18	32111-7	2	Nut-Cap
19	321-13	2	Screw-HH
20	322-11	2	Screw-HH
21	82-9952	1	Brkt-Throttle Control
22	49-1630	2	Spacer-Support
23	256-276	2	Spacer-Nylon
24	66-5350	1	Lever-Control
25	3296-42	4	Nut-Lock Ni
26	3296-58	2	Nut-Lock Ni

Ref. No.	Part No.	Qty.	Description
27	82-2380	1	Decal/Traction Control
28	77-5270	1	Lever-Control
29	61-8270-03	1	Bar-Control
30	99-6291	1	Cable-Brake
31	46-6980	1	Support-Cable
32	3256-22	1	Washer-Flat
33	48-2810	1	Rod-Bag Support
34	100-3297-03	1	Latch-RH Handle
35	46-7030	1	Retainer-Cable
36	74-1791	1	Cable-Traction
37	70-1061	1	Cable-Throttle
38	74-1970	1	Decal - Gear Position
39	32151-86	2	E-Ring - Throt & Tract







Sheet No.:4a

### Bagging Assembly

Ref. No.	Part No.	Qty.	Description
*	99-2535	1	Grass Bag Assy-Service Only
1:1	33-4820	1	Hinge-Bag Door
1:2	42-4030	1	Frame-Upper Bag
1:3	3290-422	2	Nut-Push
1:4	36-6910	2	Spring
1:5	42-4020	1	Frame-Bag
1:6	98-9222	1	ASM - Grass Bag
1:7	48-2840	1	Door-grass Bag

Ref. No.	Part No.	Qty.	Description

\* Not illustrated

