



## Oil Cooler Kit

### Greensmaster® 3250-D

Model No. 100-3166

## Parts Catalog

---

### Ordering Replacement Parts

To order replacement parts, please supply: the part number, the quantity, and the description of each part desired.

### Understanding Reference Numbers

Each identified part in an illustration has a reference number. The reference number for a part also appears in the parts list, along with other information about the part.

This catalog uses two special reference number formats, one to indicate parts in a service assembly and another to indicate the quantity of a given part in an illustration.

### Service Assembly Reference Numbers

Parts in service assemblies have reference numbers in the form **a:b**. The **a** represents the reference number of the entire service assembly and the **b** represents a sequential number unique to each part within the service assembly.

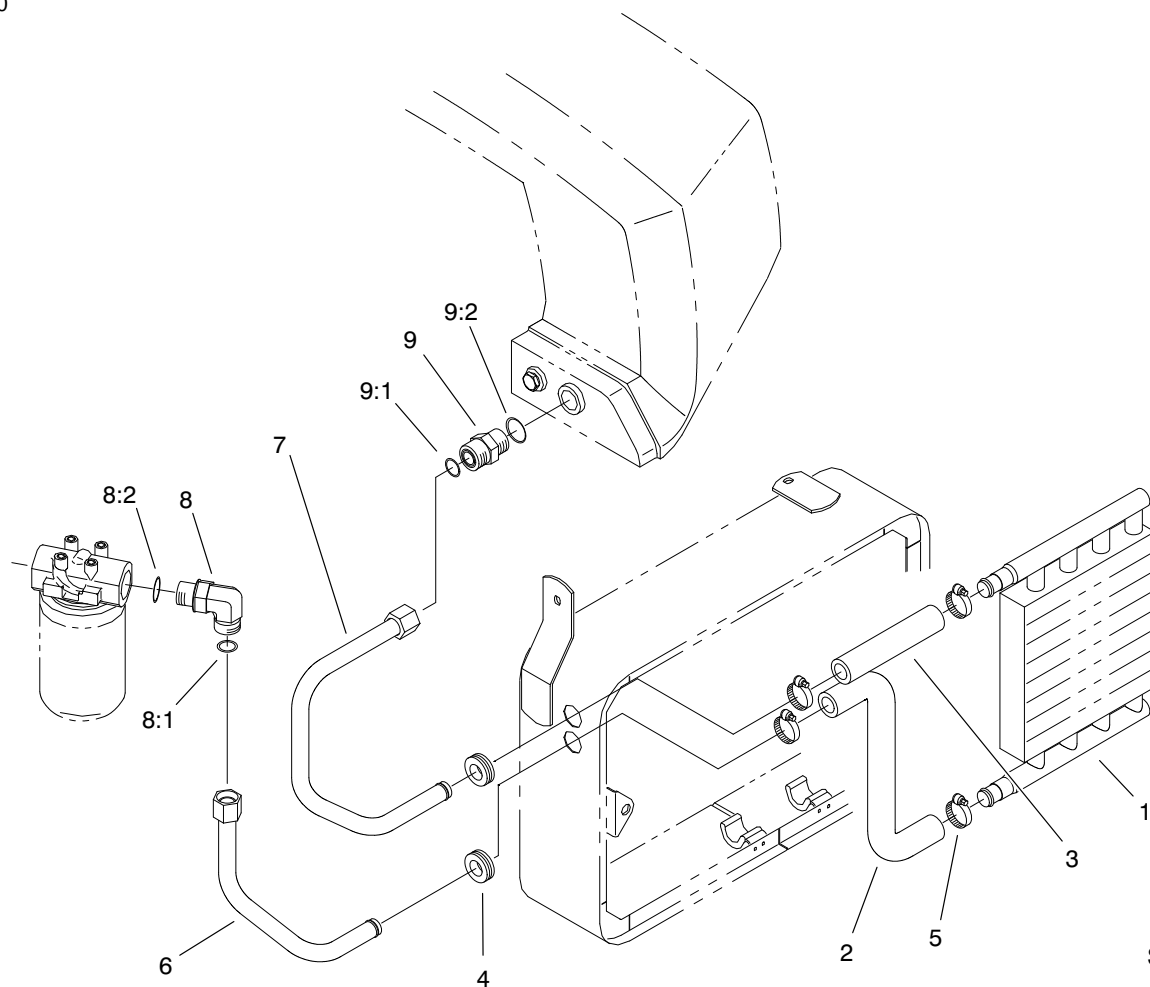
For example, a wheel assembly might be identified by reference number **6**, the tire by **6:1**, the valve by **6:2**, and the wheel by **6:3**. When you order the assembly identified by reference number **6**, you receive all parts identified by reference numbers **6:1**, **6:2**, and **6:3**. However, you may also order any part individually.

Reference numbers of this type appear in illustrations and in part lists.

### Reference Numbers Indicating Quantity

In an illustration, if a reference number indicates more than one part, the reference number has the form **nX y**. The **n** represents the quantity of the part, the **X** is the multiplication symbol, and the **y** represents the reference number.

For example, in an illustration, the reference number **2X 37** means that two of the parts identified by reference number **37** are indicated.



Sheet No.:1

## Oil Cooler Kit

Ref. No.	Part No.	Qty.	Description
1	94-3475	1	Cooler-Oil
2	94-1399	1	Hose-Formed
3	94-3338	1	Hose-Formed
4	237-125	2	Grommet
5	2412-129	4	Clamp-Hose
6	100-3167	1	Tube ASM
7	100-3168	1	Tube ASM
8	340-142	1	Elbow-90°
8:1	237-58	1	O-Ring
8:2	237-81	1	O-Ring
9	340-9	1	Fitting-Straight
9:1	237-58	1	O-Ring
9:2	237-81	1	O-ring

Ref. No.	Part No.	Qty.	Description



