



PART NO. 52-3690

**INSTALLATION  
INSTRUCTIONS****REMOTE FUEL TANK KIT**  
3 QUART

**Note:** This fuel tank is designed to accommodate handle mounted or deck mounted applications. Determine which application is suited for your model and follow the appropriate installation instructions. Only use parts necessary to complete installation on your particular model. Retain excess parts for future applications.

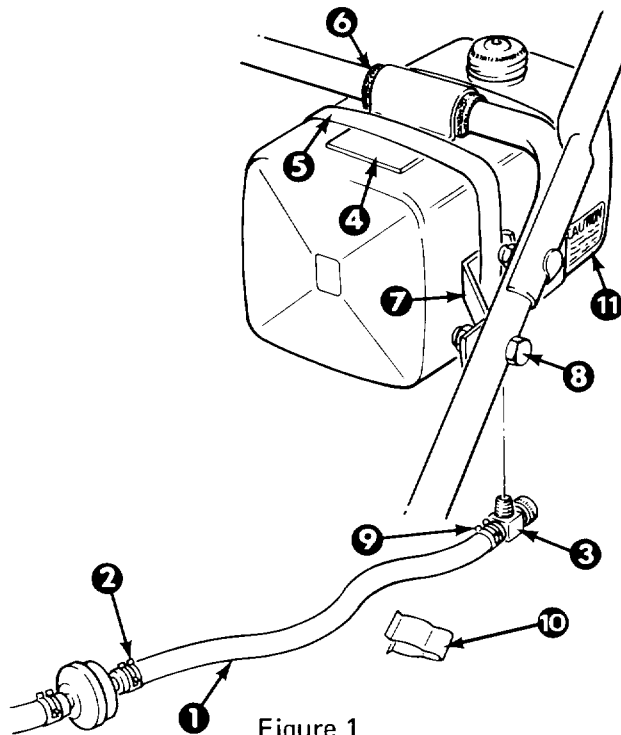
**HANDLE MOUNTED TANK (Fig. 1)**

Figure 1

- |                      |                       |
|----------------------|-----------------------|
| 1. Fuel Line         | 7. Tank Brace         |
| 2. Hose Clamp (1/4") | 8. Capscrew and Nut   |
| 3. Fuel Valve        | 9. Hose Clamp (5/16") |
| 4. Tank Bracket      | 10. Handle Clamp      |
| 5. Tank Straps       | 11. Caution Decal     |
| 6. Isolator Pad      |                       |

1. Secure fuel line to mower fuel filter with hose clamp.

2. Thread fuel valve into fuel tank, positioning valve opening toward center of tank.

3. Loosely assemble tank bracket, tank straps, and fuel tank onto lower handle with 1/4-20 cap screws and nuts.

**Note:** For 7/8" handles, cut isolator pad to length of tank bracket and place between bracket and handle when installing.

4. Position tank brace under front tank strap and adjust until brace mounting hole is aligned with center of handle when tank is level. Using tank

brace as a template, mark and drill an 11/32" dia. hole thru handle.

5. Secure tank brace to handle with 5/16-18 cap screw and nut.

6. Level tank and tighten all screws and nuts.

7. Cut fuel line to length needed and secure to fuel tank valve with 5/16" hose clamp. Secure fuel line to lower handle with handle clamp.

8. Apply caution decal to flat, dry, and visible surface of fuel tank.

**Note:** Close fuel valve if handle is ever removed or when mower is not in use.

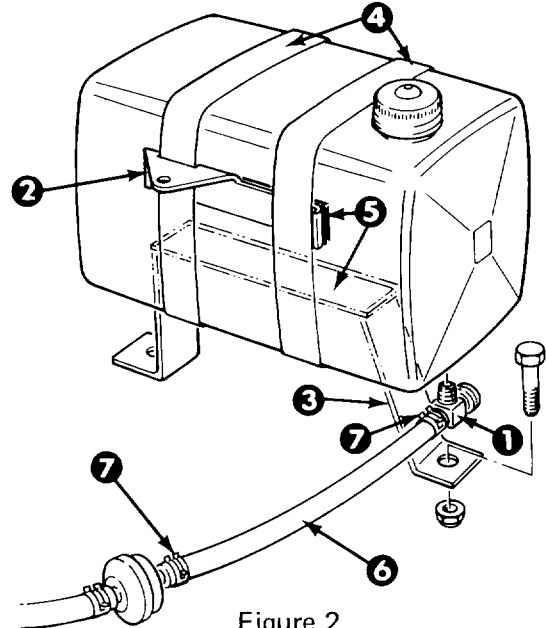
**DECK MOUNTED TANK (Fig. 2)**

Figure 2

- |                      |                  |
|----------------------|------------------|
| 1. Fuel Valve        | 5. Isolator Pads |
| 2. Front Tank Mount  | 6. Fuel Line     |
| 3. Bottom Tank Mount | 7. Hose Clamps   |
| 4. Mounting Straps   |                  |

1. Thread fuel valve into fuel tank, positioning valve opening as shown in fig. 2.

2. Loosely assemble front and bottom tank mounts to fuel tank with mounting straps and iso-

lator pads. Position isolator pads between mounts and tank. Secure straps with 1/4-20 capscrews and nuts as shown in fig. 2.

3. Remove rear flange head capscrew securing recoil to blower housing on mower.

4. Position fuel tank assembly onto mower deck behind engine, and align mounting hole of front tank mount with mounting hole in recoil.

5. Using bottom tank mount as a template, mark and drill (2) 11/32" dia. holes thru mower deck.

6. Secure bottom tank mount to deck with (2) 5/16-18x1.00 capscrews and locknuts. Secure front

mount to recoil with flange head capscrew previously removed.

7. Tighten all screws and nuts.

8. Secure fuel line to mower fuel filter and secure with hose clamp.

9. Cut fuel line to length needed and secure to fuel tank valve with hose clamp. Secure fuel line to lower handle with handle clamp.

10. Apply caution decal to flat, dry, and visible surface of fuel tank.

**Note:** Close fuel valve when mower is not in use.