



Dethatcher Kit

Model No. 03516—40001 and Up

Parts Catalog

Ordering Replacement Parts

To order replacement parts, please supply: the part number, the quantity, and the description of each part desired.

Understanding Reference Numbers

Each identified part in an illustration has a reference number. The reference number for a part also appears in the parts list, along with other information about the part.

This catalog uses two special reference number formats, one to indicate parts in a service assembly and another to indicate the quantity of a given part in an illustration.

Service Assembly Reference Numbers

Parts in service assemblies have reference numbers in the form **a:b**. The **a** represents the reference number of the entire service assembly and the **b** represents a sequential number unique to each part within the service assembly.

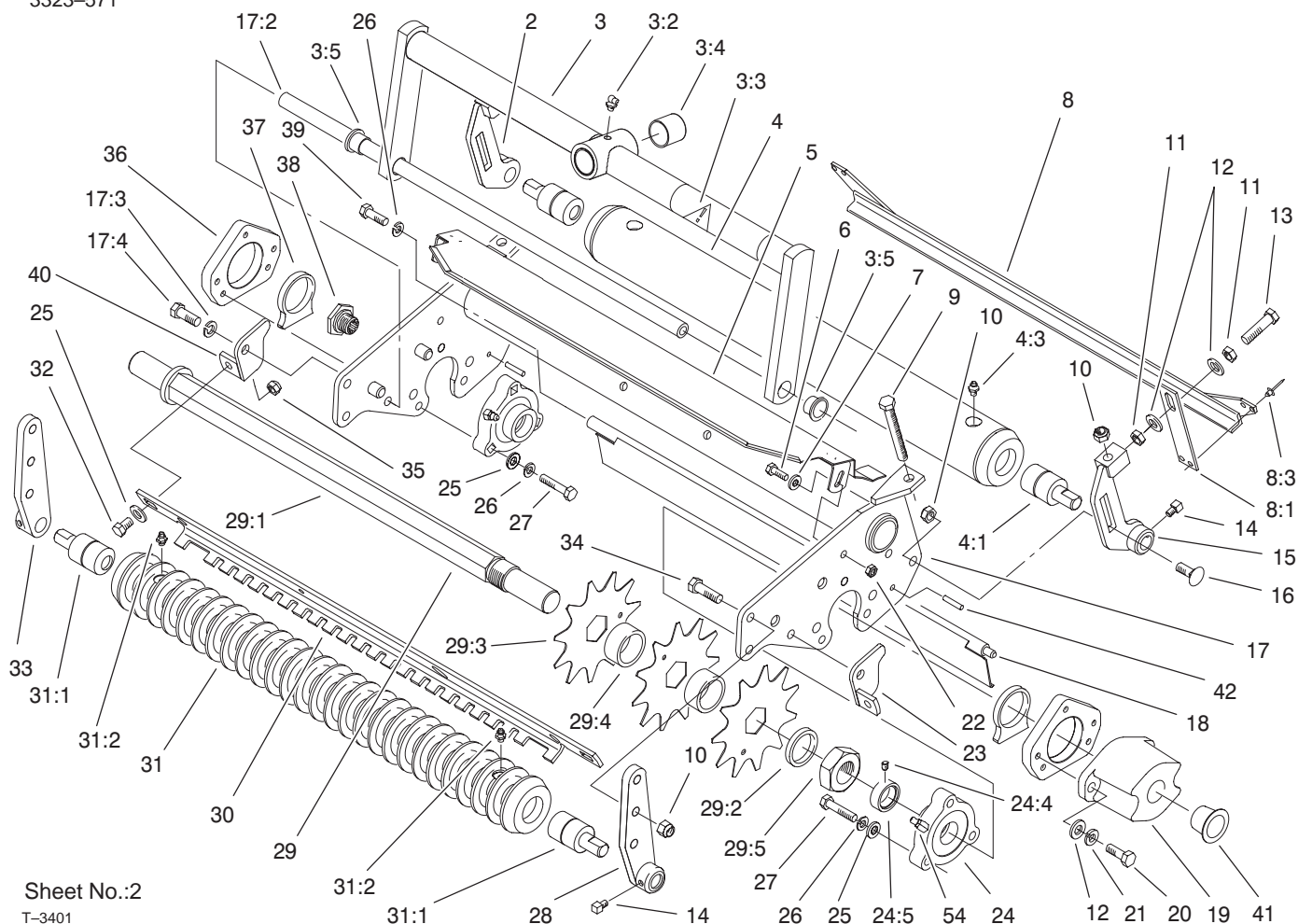
For example, a wheel assembly might be identified by reference number **6**, the tire by **6:1**, the valve by **6:2**, and the wheel by **6:3**. When you order the assembly identified by reference number **6**, you receive all parts identified by reference numbers **6:1**, **6:2**, and **6:3**. However, you may also order any part individually.

Reference numbers of this type appear in illustrations and in part lists.

Reference Numbers Indicating Quantity

In an illustration, if a reference number indicates more than one part, the reference number has the form **nX y**. The **n** represents the quantity of the part, the **X** is the multiplication symbol, and the **y** represents the reference number.

For example, in an illustration, the reference number **2X 37** means that two of the parts identified by reference number **37** are indicated.



Sheet No.:2

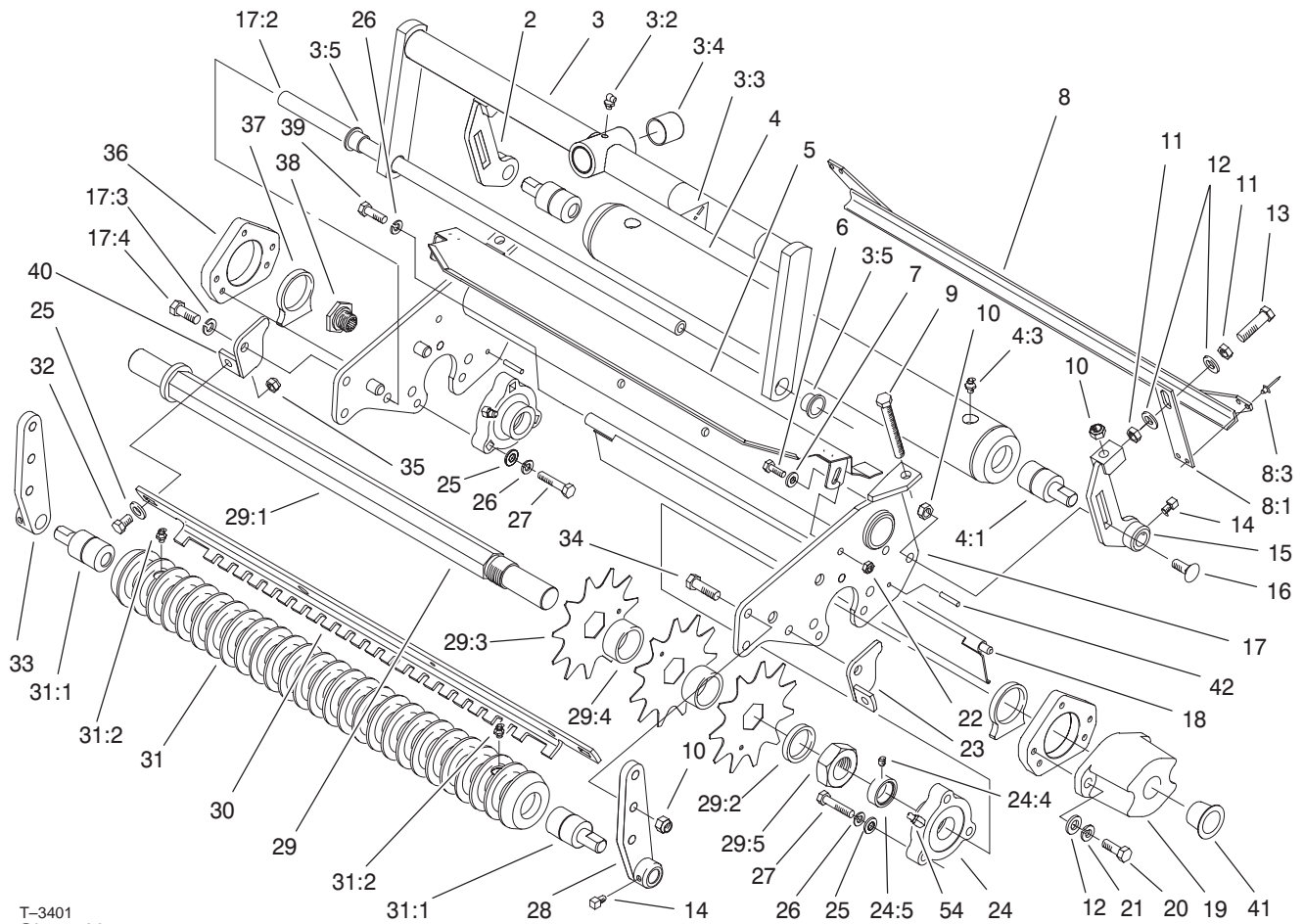
T-3401

Dethatcher Assembly

Ref. No.	Part No.	Qty.	Description
2	82-6630-01	1	Bracket-HOC, RH
3	100-6194	1	Carrier Frame ASM
3:2	302-60	1	Fitting-Lube
3:3	93-6688	1	Decal - Danger
3:4	67-1750	2	Bushing
3:5	75-2160	2	Bushing
4	82-6680	1	Full Roller ASM
4:1	75-1290	2	Bearing-Roller
4:3	302-5	2	Fitting-Lube
5	75-1840	1	Front Grass Shield ASM
6	321-4	2	Screw-HH
7	3256-1	2	Washer-Flat
8	82-6740	1	Rear Scraper ASM
8:1	82-6770-01	2	Spring - Scraper
8:3	3269-3	4	Pop Rivet
9	323-49	2	TAP Bolt
10	3296-39	8	Nut-Lock, NI
11	3218-3	4	Nut-Jam
12	3256-24	8	Washer-Flat
13	323-53	2	TAP Bolt
14	3242-2	4	Screw-SQH
15	82-6650-01	1	Bracket-HOC, LH
16	3231-3	2	Screw-CARR
17	82-6710	1	Dethatcher Frame ASM

Ref. No.	Part No.	Qty.	Description
17:2	75-1710	1	Support
17:3	3253-21	2	Washer-Lock/Sp
17:4	323-6	2	Screw-HH
18	82-6780-01	1	Deflector-Rear
19	10-5080-01	1	End Cap
20	323-6	4	Screw-HH
21	3253-21	4	Washer-Lock/Sp
22	3296-42	2	Nut-Lock
23	82-6880-01	1	Scraper, LH
24	76-2460	2	Bearing ASM
*24:1	94-3405	1	Bearing-Ball
*24:3	302-5	1	Fitting-Lube
24:4	3245-35	1	Screw-HS
24:5	251-77	1	Bearing-Lockcollar
25	3256-23	8	Washer-Flat
26	3253-4	7	Washer-Lock/Sp
27	322-7	6	Screw-HH
28	82-6530-01	1	Support-HOC, LH
29	82-6560	1	Dethatcher Shaft ASM
29:1	82-6570	1	Shaft-Reel
29:2	17-1600	2	Spacer
29:3	17-1590	24	Blade 11 Tooth
29:4	82-6600	23	Spacer

* Not illustrated



Dethatcher Assembly (Continued)

Ref. No.	Part No.	Qty.	Description	Ref. No.	Part No.	Qty.	Description
29:5	67-5840	1	Jam Nut				
30	82-6830-01	1	Bracket-Scraper				
31	75-1520	1	Wiehle Roller ASM				
31:1	75-1290	2	Bearing-Roller				
31:2	302-5	2	Fitting-Lube				
32	322-3	2	Screw-HH				
33	82-6510-01	1	Support-HOC, RH				
34	323-7	4	Screw-HH				
35	3296-29	2	Nut-Lock,NI				
36	82-6810-01	2	Bearing Plate				
37	82-6820	2	Spacer				
38	77-0340	1	Spline Nut				
39	322-5	1	Screw-HH				
40	82-6870-01	1	Scraper, RH				
41	12-0460	1	No.13 Caplug				
42	32121-12	2	Pin-Roll				
54	302-11	2	Fitting-lube 45°				

