

# Parts Catalog

## 107cm Bagger Zero-Turn-Radius Riding Mower

Model No. 79415—Serial No. 400000000 and Up

# Ordering Replacement Parts

To order replacement parts, please supply the part number, the quantity, and the description of each part desired.

## Understanding Reference Numbers

Each identified part in an illustration has a reference number. The reference number for a part also appears in the parts list, along with other information about the part.

This catalog uses two special reference number formats, one to indicate parts in a service assembly and another to indicate the quantity of a given part in an illustration.

## Service Assembly Reference Numbers

Parts in service assemblies have reference numbers in the form a:b. The a represents the reference number of the entire service assembly and the b represents a sequential number unique to each part within the service assembly.

For example, a wheel assembly might be identified by reference number 6, the tire by 6:1, the valve by 6:2, and the wheel by 6:3. When you order the assembly identified by reference number 6, you receive all parts identified by reference numbers 6:1, 6:2, and 6:3. However, you may also order any part individually. Reference numbers of this type appear in illustration and in parts lists.

## Reference Numbers Indicating Quantity

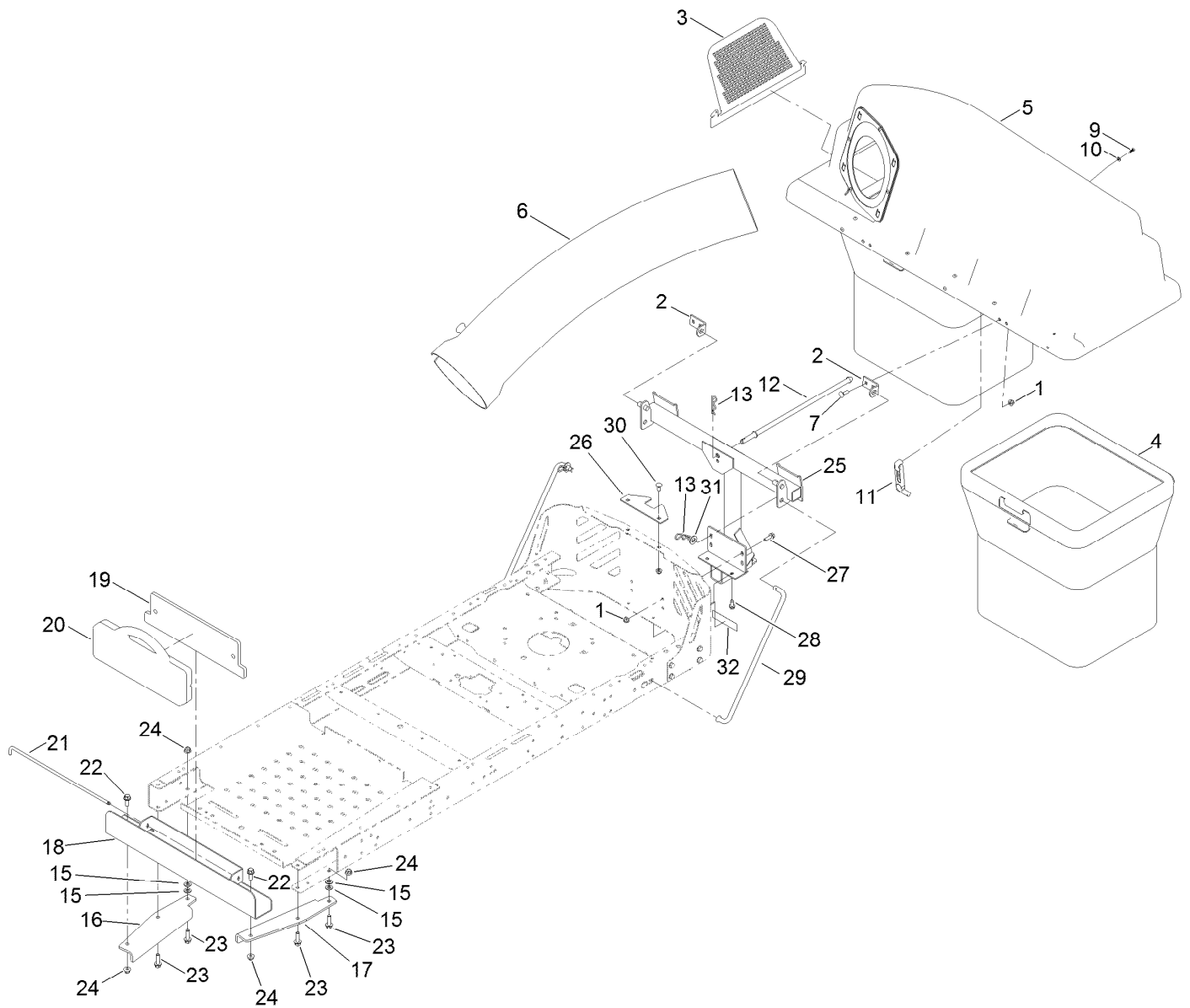
In an illustration, if a reference number indicates more than one part, the reference number has the form nX y. The n represents the quantity of the part, the X is the multiplication symbol, and the y represents the reference number.

For example, in an illustration, the reference number 2X 37 means that two of the parts identified by reference number 37 are indicated.

# Contents

Bagger Assembly ..... 4  
 Bag Assembly No. 112-3994 ..... 6  
 Bagger Top Assembly No. 131-8654 ..... 8  
 Chute Assembly ..... 10  
 Chute Assembly No. 140-3503 ..... 12

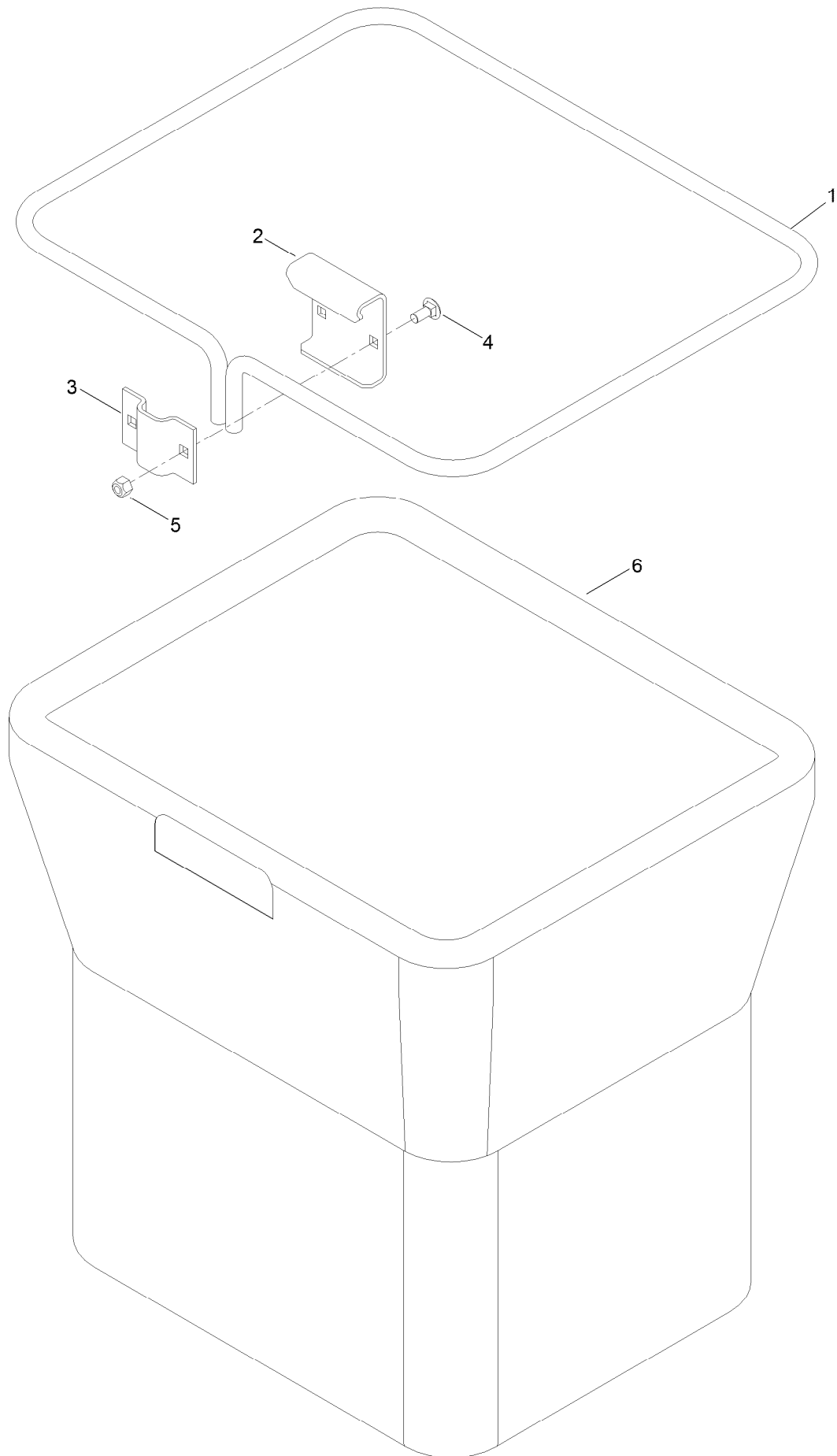
# Bagger Assembly



## Bagger Assembly (continued)

<i>Ref.</i>	<i>Part Number</i>	<i>Qty.</i>	<i>Description</i>	<i>Ref.</i>	<i>Part Number</i>	<i>Qty.</i>	<i>Description</i>
1	119-4041	8	Nut-HF	18	120-5491-03	1	Channel-Weight, Bagger
2	140-5016	2	Bracket-Hopper Pivot	19	120-5495-03	1	Plate
3	112-3993	1	Screen-Bagger	20	109-9742-05	1	Weight-35 Pound
4	112-3994	2	Bag ASM	21	109-9759	1	Pin-Weight
5	131-8654	1	Bagger Top ASM	22	139-2597	2	Screw-HHF
6	112-3995	1	Tube-Bagger	23	119-4061	4	Screw-HHF
7	110-3144	4	Bolt-CARR	24	119-4042	4	Nut-HF, NI
9	132-6919	2	Screw-Plastic, PTH	25	133-4320-03	1	Pivot Frame ASM
10	137-3073	2	Washer-Plain	26	131-3967-03	1	Bracket-Stabilizer
11	116-4992	1	Latch-Rubber	27	139-2596	2	Screw-HHF
12	131-4189	1	Rod-Hood, Down	28	32144-70	2	Screw-HWHTF
13	139-2562	3	Pin-Hair	29	140-5093	2	Rod-Support, Cz
15	115-1166	4	Washer-Flat	30	139-2630	2	Bolt-CARR
16	120-5502-03	1	Bracket-Bagger Weight, RH	31	139-2611	2	Washer-Flat
17	120-5497-03	1	Bracket-Bagger Weight, LH	32	131-4036	1	Decal

# Bag Assembly No. 112-3994

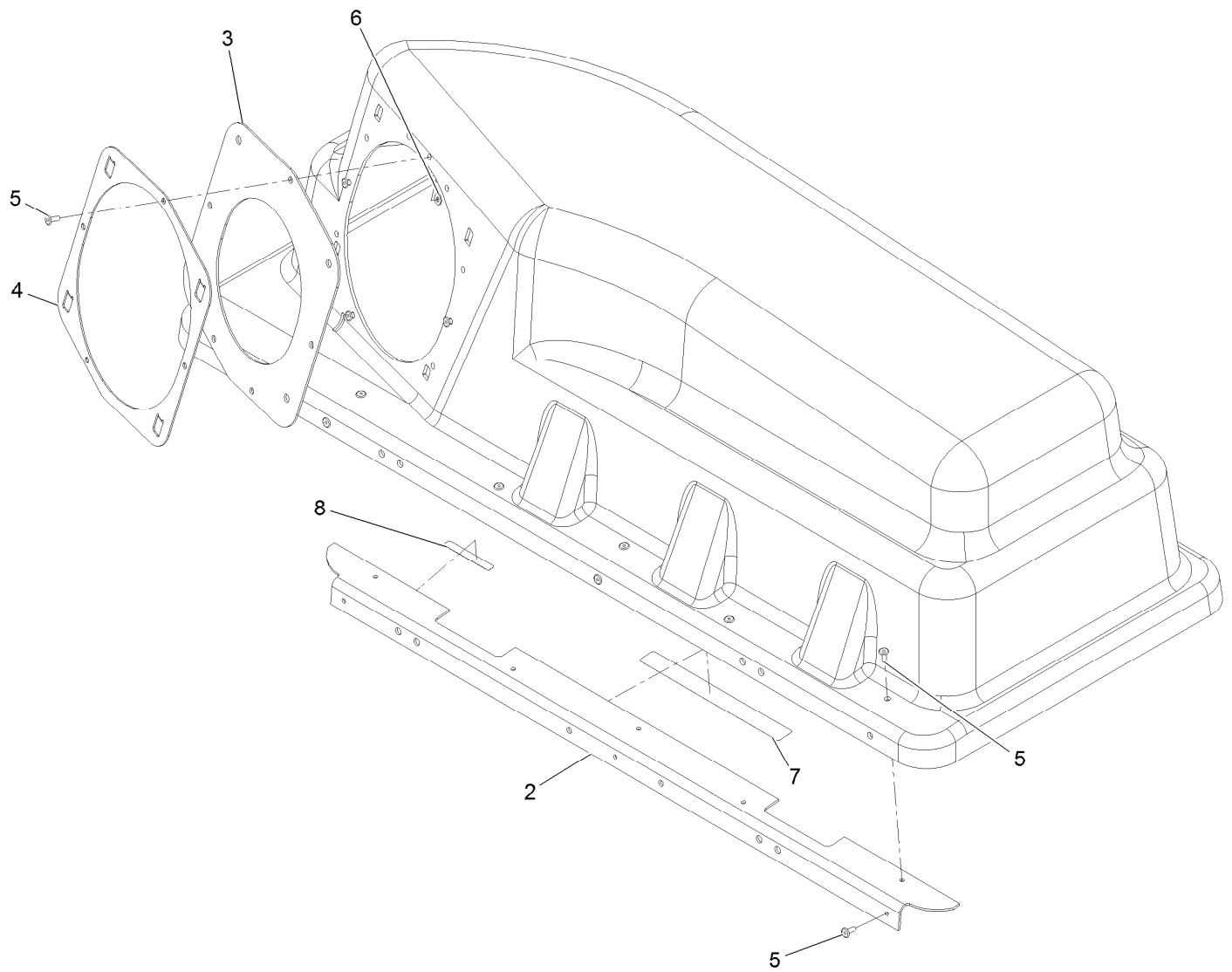


## Bag Assembly No. 112-3994 (continued)

<i>Ref.</i>	<i>Part Number</i>	<i>Qty.</i>	<i>Description</i>
1	114972-03	1	Frame-Bag
2	114973-03	1	Hanger-Bag
3	114974-03	1	Clamp

<i>Ref.</i>	<i>Part Number</i>	<i>Qty.</i>	<i>Description</i>
4	3230-1	2	Bolt-CARR
5	3296-29	2	Nut-Lock, NI
6	110-6674	1	Bag

# Bagger Top Assembly No. 131-8654



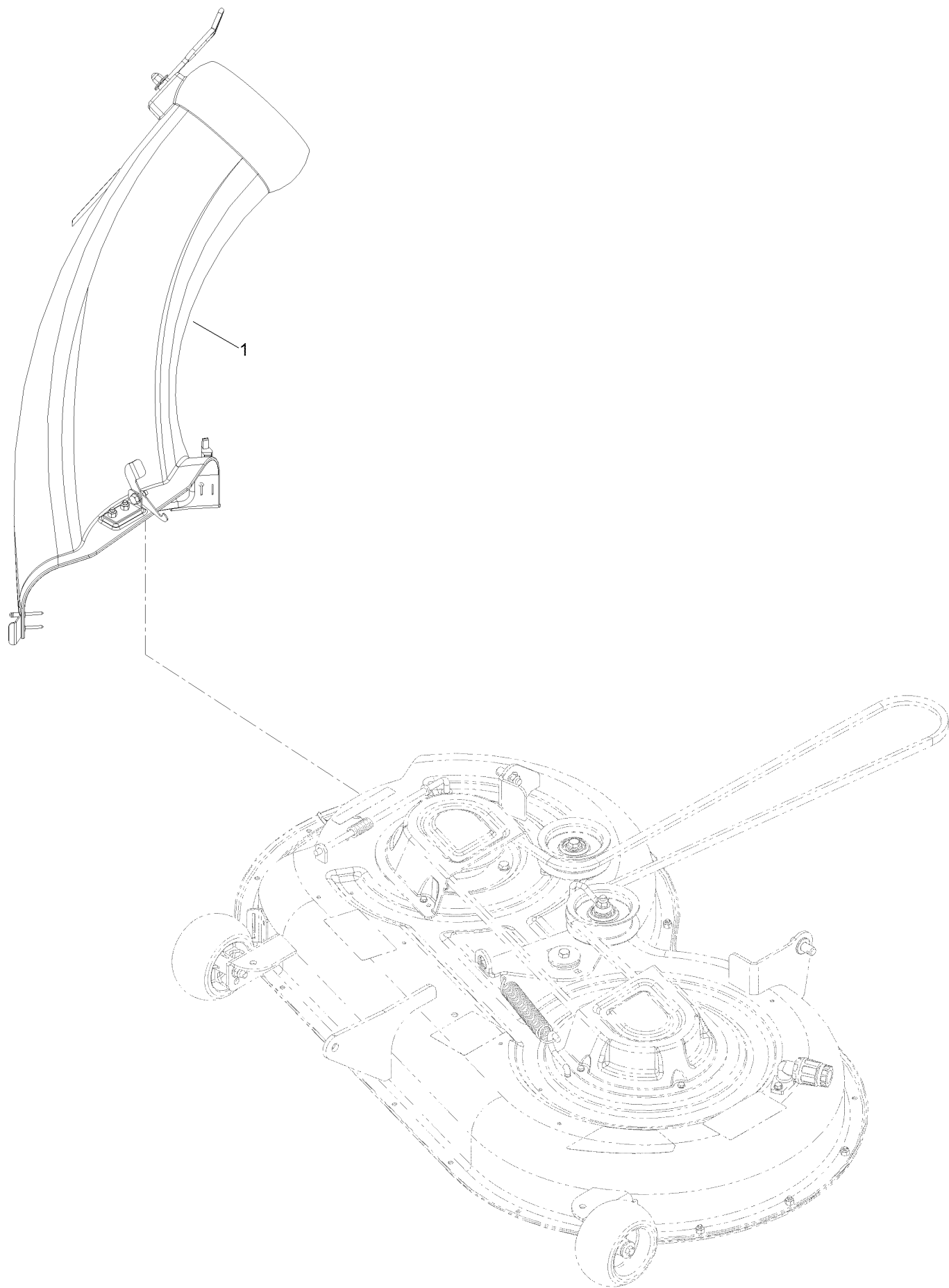


## Bagger Top Assembly No. 131-8654 (continued)

<i>Ref.</i>	<i>Part Number</i>	<i>Qty.</i>	<i>Description</i>
2	116-1242-03	1	Stiffener-Bagger Top
3	112-4001	1	Gasket
4	112-4000-03	1	Ring-Retainer
5	114439	12	Rivet-Blind

<i>Ref.</i>	<i>Part Number</i>	<i>Qty.</i>	<i>Description</i>
6	137-3073	4	Washer-Plain
7	109-6809	1	Decal-Caution, Bagger
8	133-8061	1	Decal-Warning

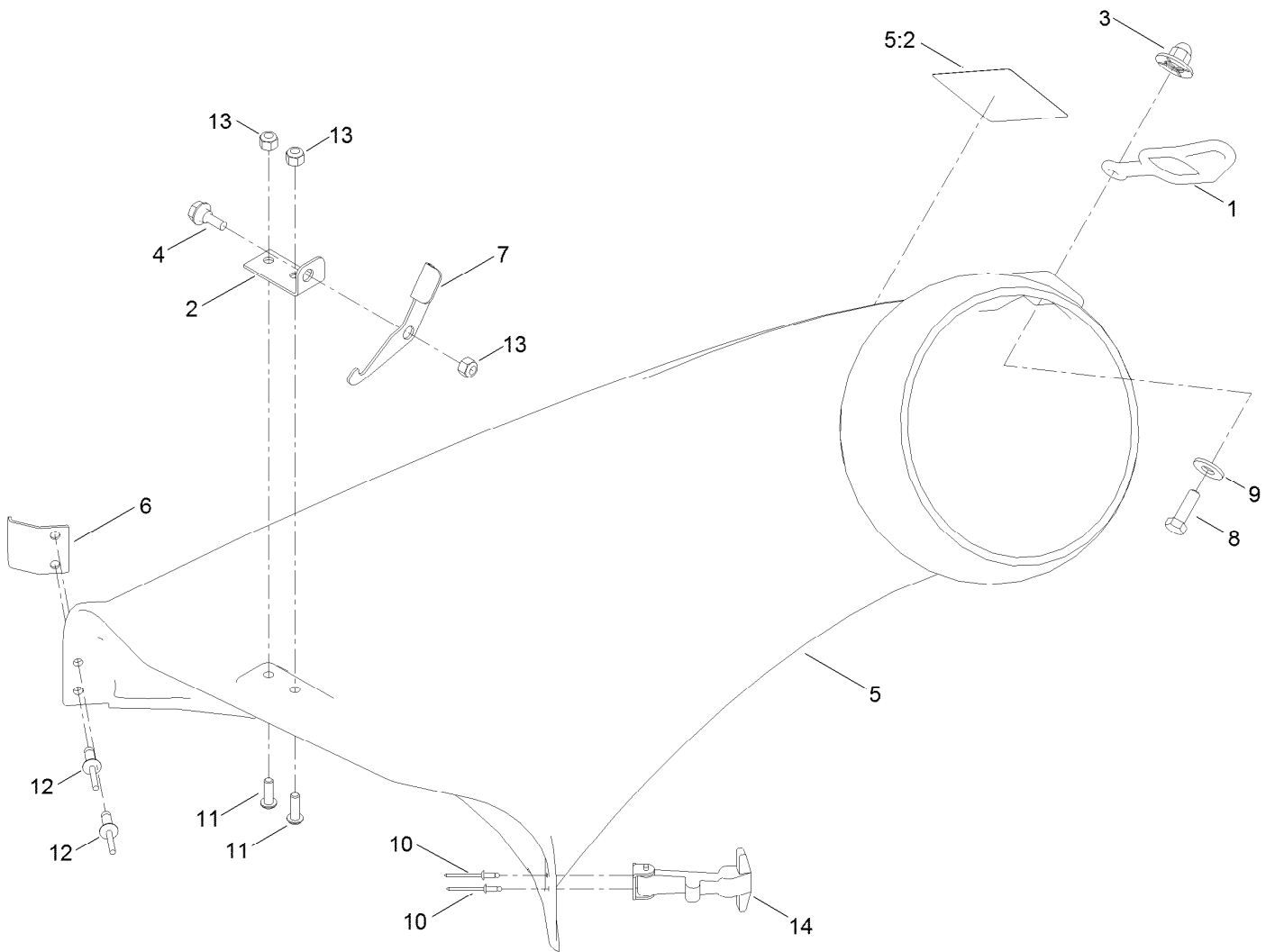
# Chute Assembly



## Chute Assembly (continued)

<i>Ref.</i>	<i>Part Number</i>	<i>Qty.</i>	<i>Description</i>
1	140-3503	1	42 Inch Bagger Boot ASM

# Chute Assembly No. 140-3503



## Chute Assembly No. 140-3503 (continued)

<i>Ref.</i>	<i>Part Number</i>	<i>Qty.</i>	<i>Description</i>
1	82-5690	1	Retainer-Duct
2	140-5094	1	Plate-Pivot, Cz
3	114-9015	1	Nut-Impeller
4	139-1730	1	Screw-Shoulder, HHF
5	137-5036	1	42 Inch Bagger Boot
5:2	110-6691	1	Decal-Danger
6	137-2023	1	Bracket-Elbow
7	140-3497	1	Latch

<i>Ref.</i>	<i>Part Number</i>	<i>Qty.</i>	<i>Description</i>
8	139-1716	1	Screw-HH
9	139-1723	1	Washer-Flat
10	3269-31	2	Rivet-Pop
11	3274-69	2	Screw-HSBH
12	3290-412	2	Rivet-Blind
13	137-3088	3	Nut-Hex
14	117344	1	Handle ASM

**Notes:**

**Notes:**

