

Parts Catalog

127cm and 137cm Bagger Zero-Turn-Radius Riding Mower

Model No. 79416—Serial No. 400000000 and Up

Ordering Replacement Parts

To order replacement parts, please supply the part number, the quantity, and the description of each part desired.

Understanding Reference Numbers

Each identified part in an illustration has a reference number. The reference number for a part also appears in the parts list, along with other information about the part.

This catalog uses two special reference number formats, one to indicate parts in a service assembly and another to indicate the quantity of a given part in an illustration.

Service Assembly Reference Numbers

Parts in service assemblies have reference numbers in the form a:b. The a represents the reference number of the entire service assembly and the b represents a sequential number unique to each part within the service assembly.

For example, a wheel assembly might be identified by reference number 6, the tire by 6:1, the valve by 6:2, and the wheel by 6:3. When you order the assembly identified by reference number 6, you receive all parts identified by reference numbers 6:1, 6:2, and 6:3. However, you may also order any part individually. Reference numbers of this type appear in illustration and in parts lists.

Reference Numbers Indicating Quantity

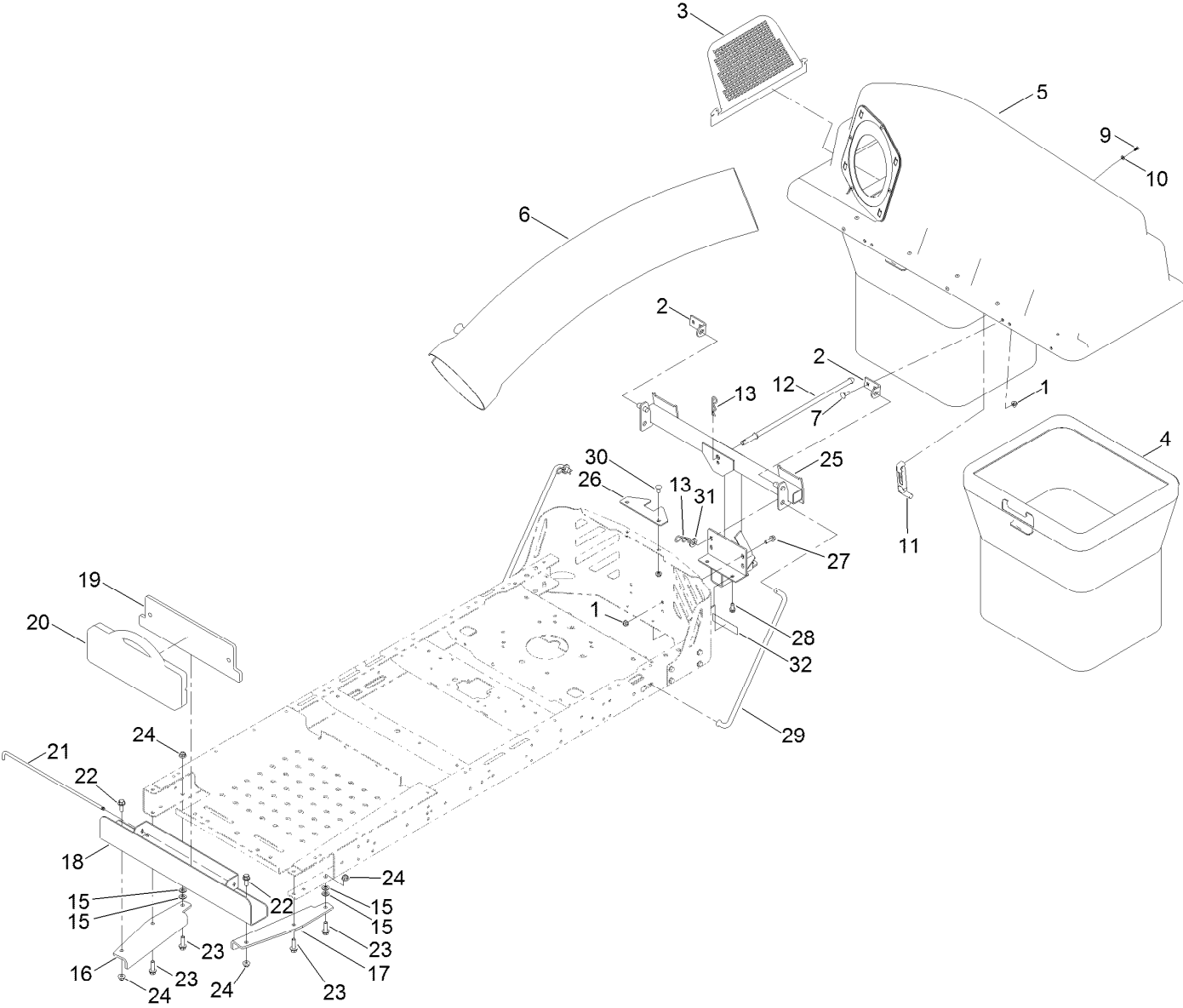
In an illustration, if a reference number indicates more than one part, the reference number has the form nX y. The n represents the quantity of the part, the X is the multiplication symbol, and the y represents the reference number.

For example, in an illustration, the reference number 2X 37 means that two of the parts identified by reference number 37 are indicated.

Contents

Bagger Assembly 4
 Bag Assembly 6
 Bagger Top Assembly No. 131-8654 8
 Chute Assembly 10
 Chute Assembly No. 140-5111 12

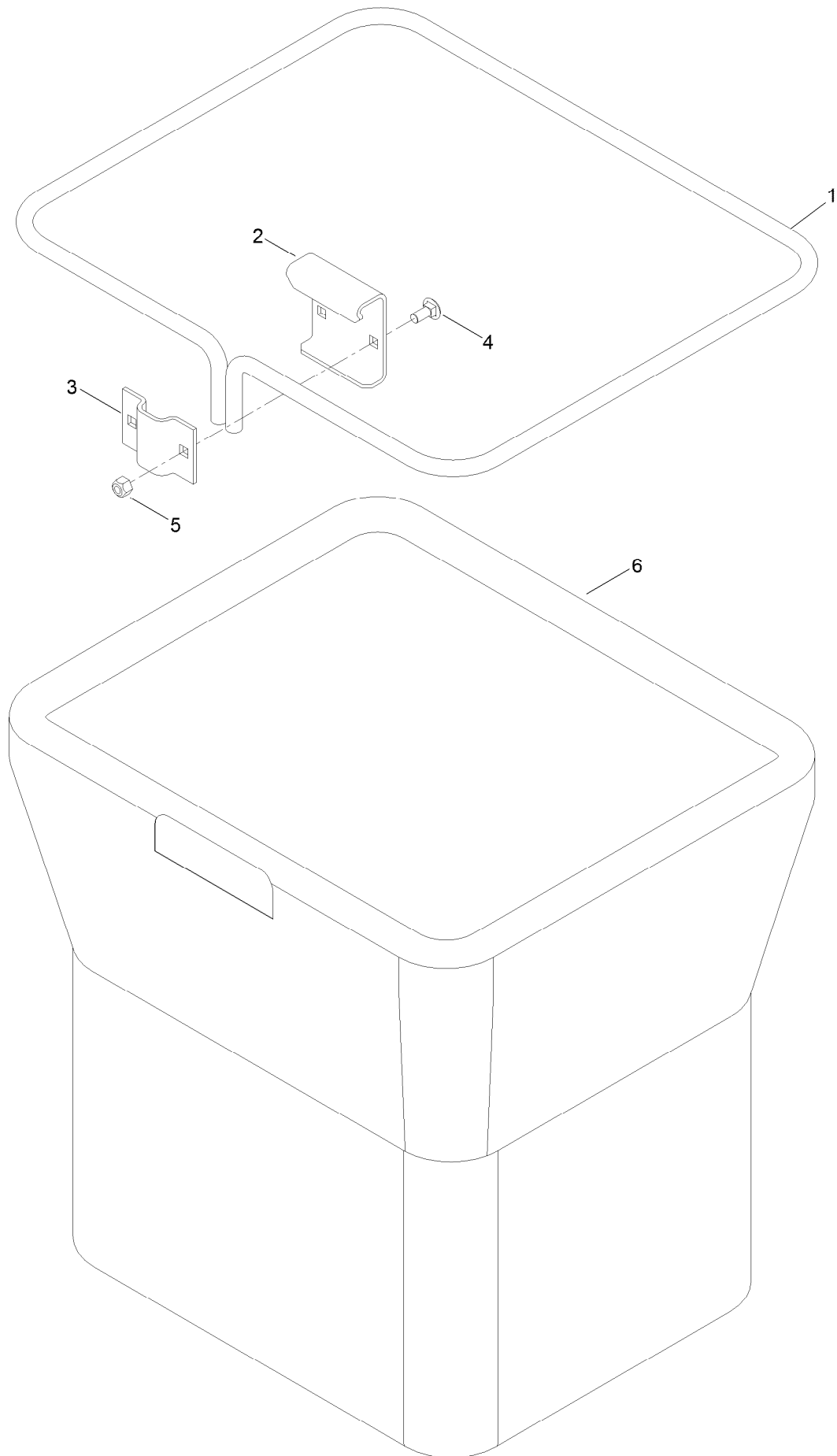
Bagger Assembly



Bagger Assembly (continued)

<i>Ref.</i>	<i>Part Number</i>	<i>Qty.</i>	<i>Description</i>	<i>Ref.</i>	<i>Part Number</i>	<i>Qty.</i>	<i>Description</i>
1	119-4041	8	Nut-HF	18	120-5491-03	1	Channel-Weight, Bagger
2	140-5016	2	Bracket-Hopper Pivot	19	120-5495-03	1	Plate
3	112-3993	1	Screen-Bagger	20	109-9742-05	1	Weight-35 Pound
4	112-3994	2	Bag ASM	21	140-5017	1	Rod, Weight Lock
5	131-8654	1	Bagger Top ASM	22	139-2597	2	Screw-HHF
6	112-3995	1	Tube-Bagger	23	119-4061	4	Screw-HHF
7	110-3144	4	Bolt-CARR	24	119-4042	4	Nut-HF, NI
9	132-6919	2	Screw-Plastic, PTH	25	133-4320-03	1	Pivot Frame ASM
10	137-3073	2	Washer-Plain	26	131-3967-03	1	Bracket-Stabilizer
11	116-4992	1	Latch-Rubber	27	139-2596	2	Screw-HHF
12	131-4189	1	Rod-Hood, Down	28	32144-70	2	Screw-HWHTF
13	139-2562	3	Pin-Hair	29	140-5093	2	Rod-Support, Cz
15	115-1166	4	Washer-Flat	30	139-2630	2	Bolt-CARR
16	120-5502-03	1	Bracket-Bagger Weight, RH	31	139-2611	2	Washer-Flat
17	120-5497-03	1	Bracket-Bagger Weight, LH	32	131-4036	1	Decal

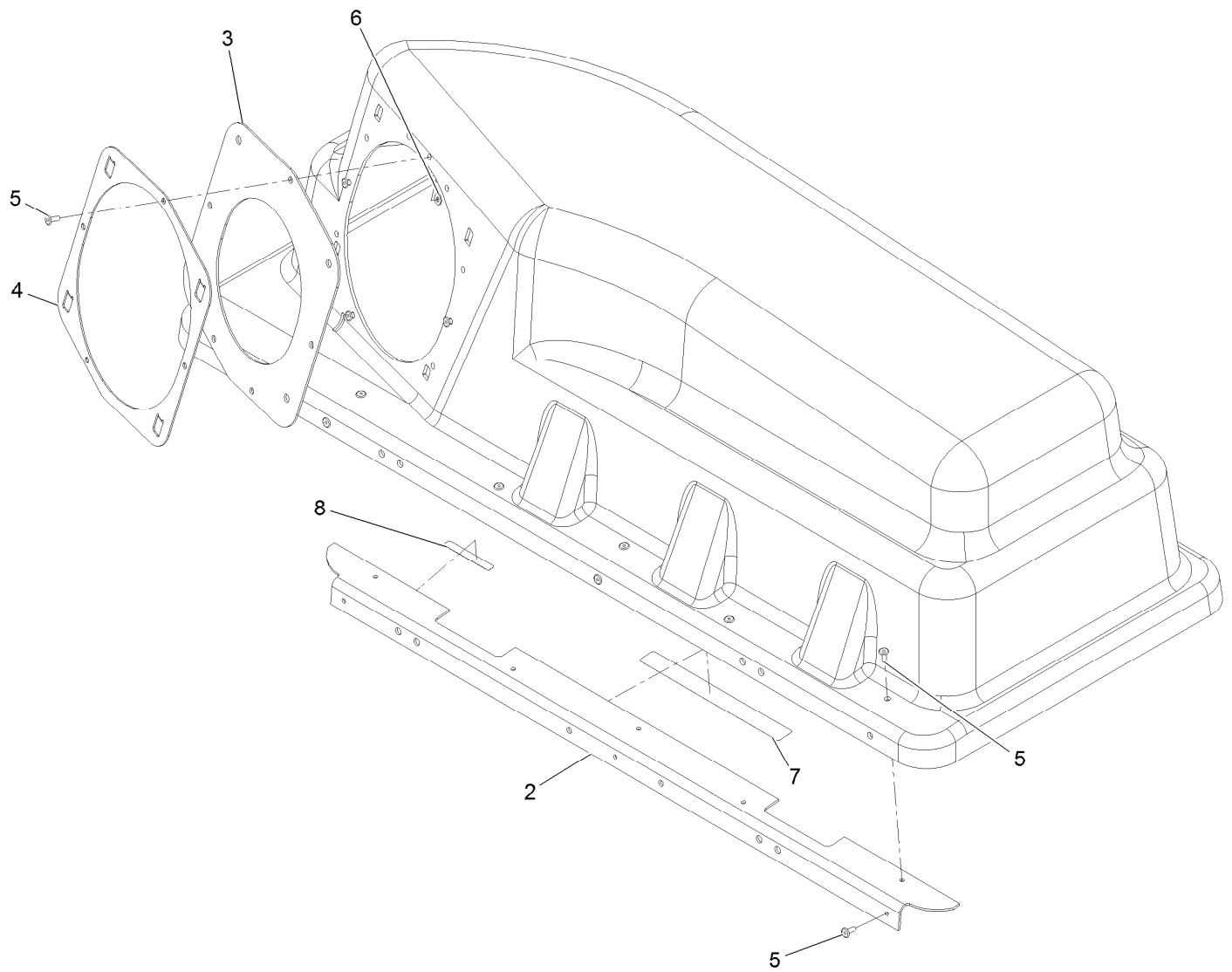
Bag Assembly



Bag Assembly (continued)

<i>Ref.</i>	<i>Part Number</i>	<i>Qty.</i>	<i>Description</i>	<i>Ref.</i>	<i>Part Number</i>	<i>Qty.</i>	<i>Description</i>
1	114972-03	1	Frame-Bag	4	3230-1	2	Bolt-CARR
2	114973-03	1	Hanger-Bag	5	3296-29	2	Nut-Lock, NI
3	114974-03	1	Clamp	6	110-6674	1	Bag

Bagger Top Assembly No. 131-8654

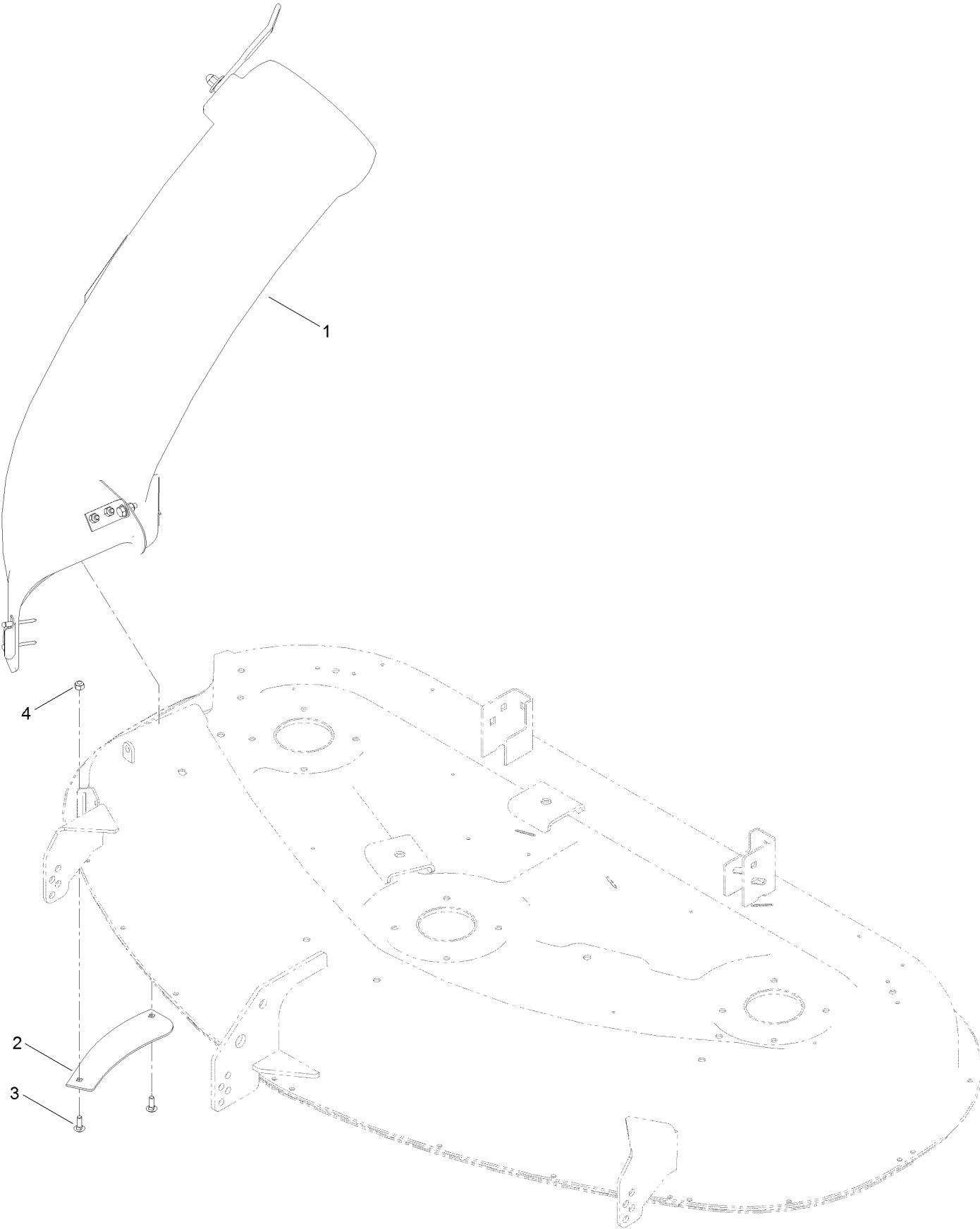


Bagger Top Assembly No. 131-8654 (continued)

<i>Ref.</i>	<i>Part Number</i>	<i>Qty.</i>	<i>Description</i>
2	116-1242-03	1	Stiffener-Bagger Top
3	112-4001	1	Gasket
4	112-4000-03	1	Ring-Retainer
5	114439	12	Rivet-Blind

<i>Ref.</i>	<i>Part Number</i>	<i>Qty.</i>	<i>Description</i>
6	137-3073	4	Washer-Plain
7	109-6809	1	Decal-Caution, Bagger
8	133-8061	1	Decal-Warning

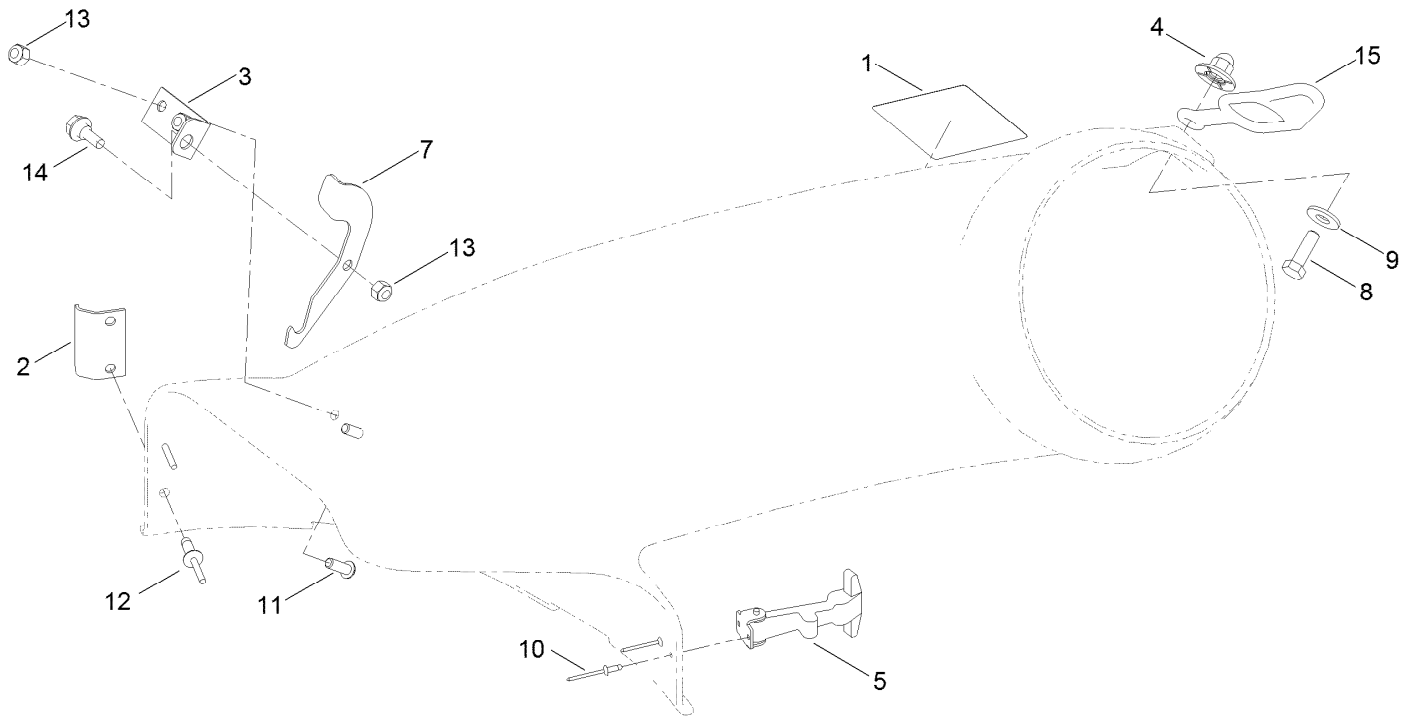
Chute Assembly



Chute Assembly (continued)

<i>Ref.</i>	<i>Part Number</i>	<i>Qty.</i>	<i>Description</i>	<i>Ref.</i>	<i>Part Number</i>	<i>Qty.</i>	<i>Description</i>
1	140-5111	1	Chute ASM-50"	3	137-3053	2	Bolt-CARR
2	131-8672-03	1	Baffle-Blowout	4	137-3088	2	Nut-Hex

Chute Assembly No. 140-5111



Chute Assembly No. 140-5111 (continued)

<i>Ref.</i>	<i>Part Number</i>	<i>Qty.</i>	<i>Description</i>
1	110-6691	1	Decal-Danger
2	140-5115	1	Bracket-Elbow
3	140-5094	1	Plate-Pivot, Cz
4	114-9015	1	Nut-Impeller
5	117344	1	Handle ASM
7	140-5116	1	Latch
8	139-1716	1	Screw-HH

<i>Ref.</i>	<i>Part Number</i>	<i>Qty.</i>	<i>Description</i>
9	139-1723	1	Washer-Flat
10	3269-31	2	Rivet-Pop
11	3274-69	2	Screw-HSBH
12	3290-412	2	Rivet-Blind
13	137-3088	3	Nut-Hex
14	139-1730	1	Screw-Shoulder, HHF
15	82-5690	1	Retainer-Duct

Notes:

Notes:

