



Form No. 3396-362 Rev C

**Count on it.**

# Parts Catalog

## Premium Seat Kit

**Greensmaster® 3300/3400 Series TriFlex®  
Traction Unit**

**Model No. 04719**



# Ordering Replacement Parts

To order replacement parts, please supply the part number, the quantity, and the description of each part desired.

## Understanding Reference Numbers

Each identified part in an illustration has a reference number. The reference number for a part also appears in the parts list, along with other information about the part.

This catalog uses two special reference number formats, one to indicate parts in a service assembly and another to indicate the quantity of a given part in an illustration.

## Service Assembly Reference Numbers

Parts in service assemblies have reference numbers in the form a:b. The a represents the reference number of the entire service assembly and the b represents a sequential number unique to each part within the service assembly.

For example, a wheel assembly might be identified by reference number 6, the tire by 6:1, the valve by 6:2, and the wheel by 6:3. When you order the assembly identified by reference number 6, you receive all parts identified by reference numbers 6:1, 6:2, and 6:3. However, you may also order any part individually. Reference numbers of this type appear in illustration and in parts lists.

## Reference Numbers Indicating Quantity

In an illustration, if a reference number indicates more than one part, the reference number has the form nX y. The n represents the quantity of the part, the X is the multiplication symbol, and the y represents the reference number.

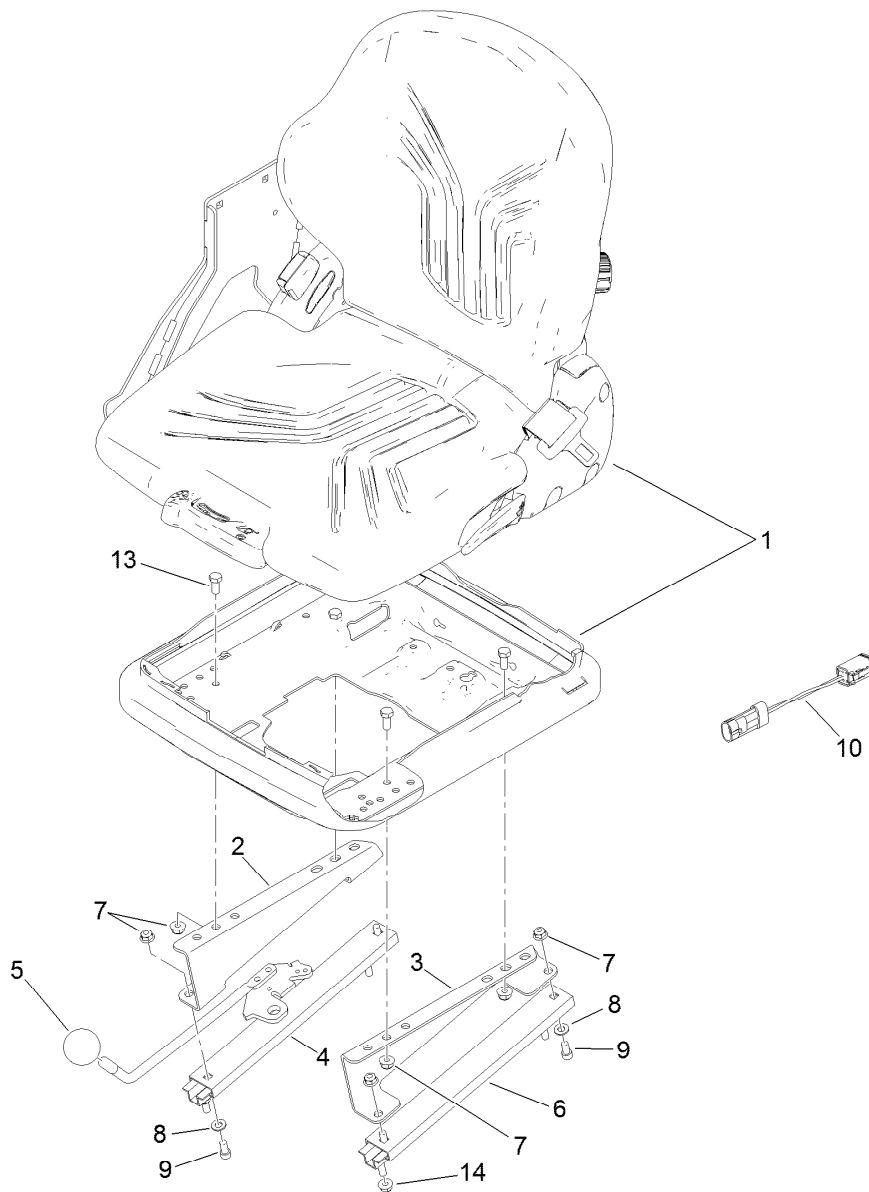
For example, in an illustration, the reference number 2X 37 means that two of the parts identified by reference number 37 are indicated.

# Contents

Premium Seat Assembly..... 4

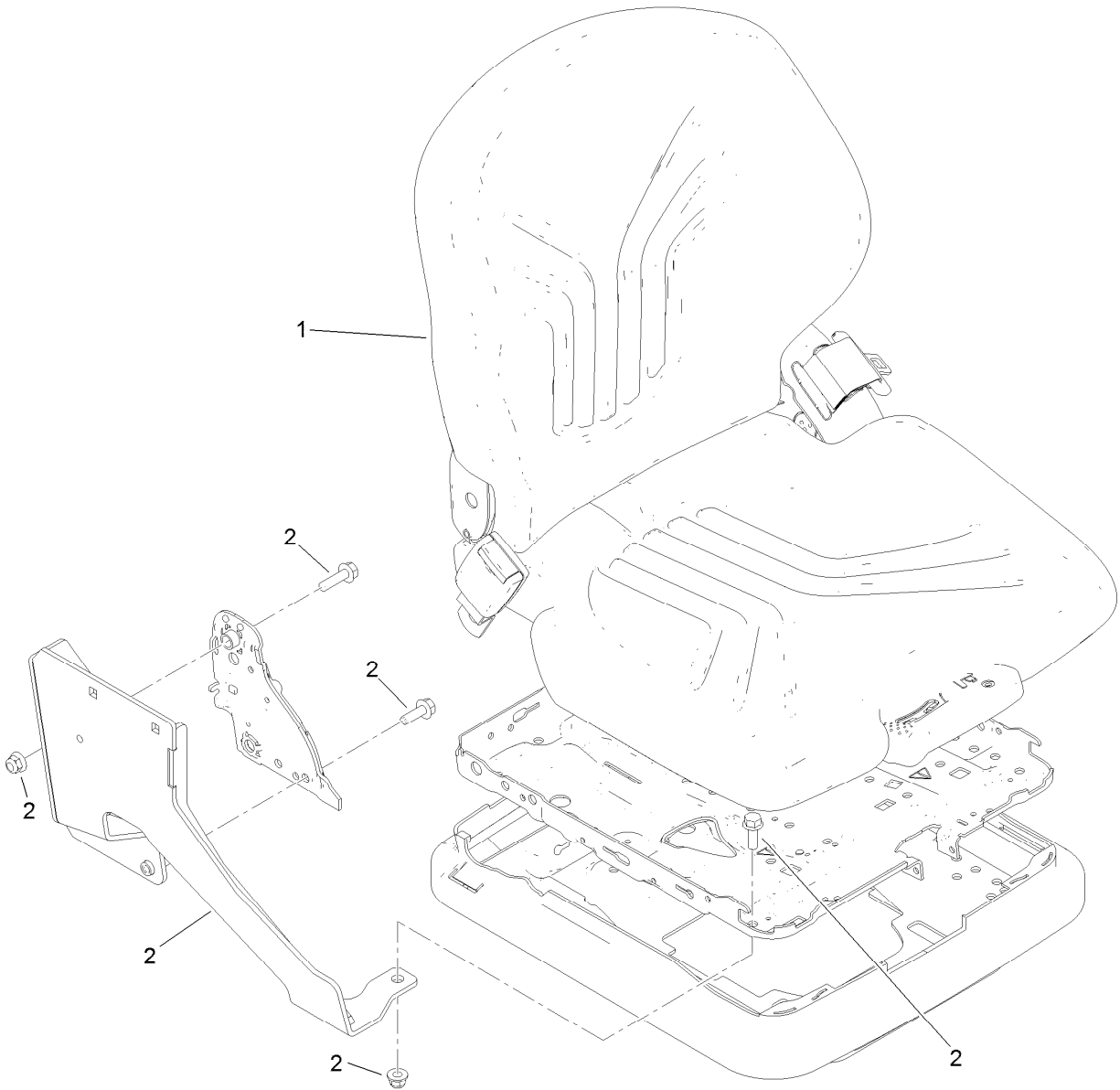
Seat and Console Support Assembly No. 119-7102..... 5

Seat Assembly No. 114-1049..... 6



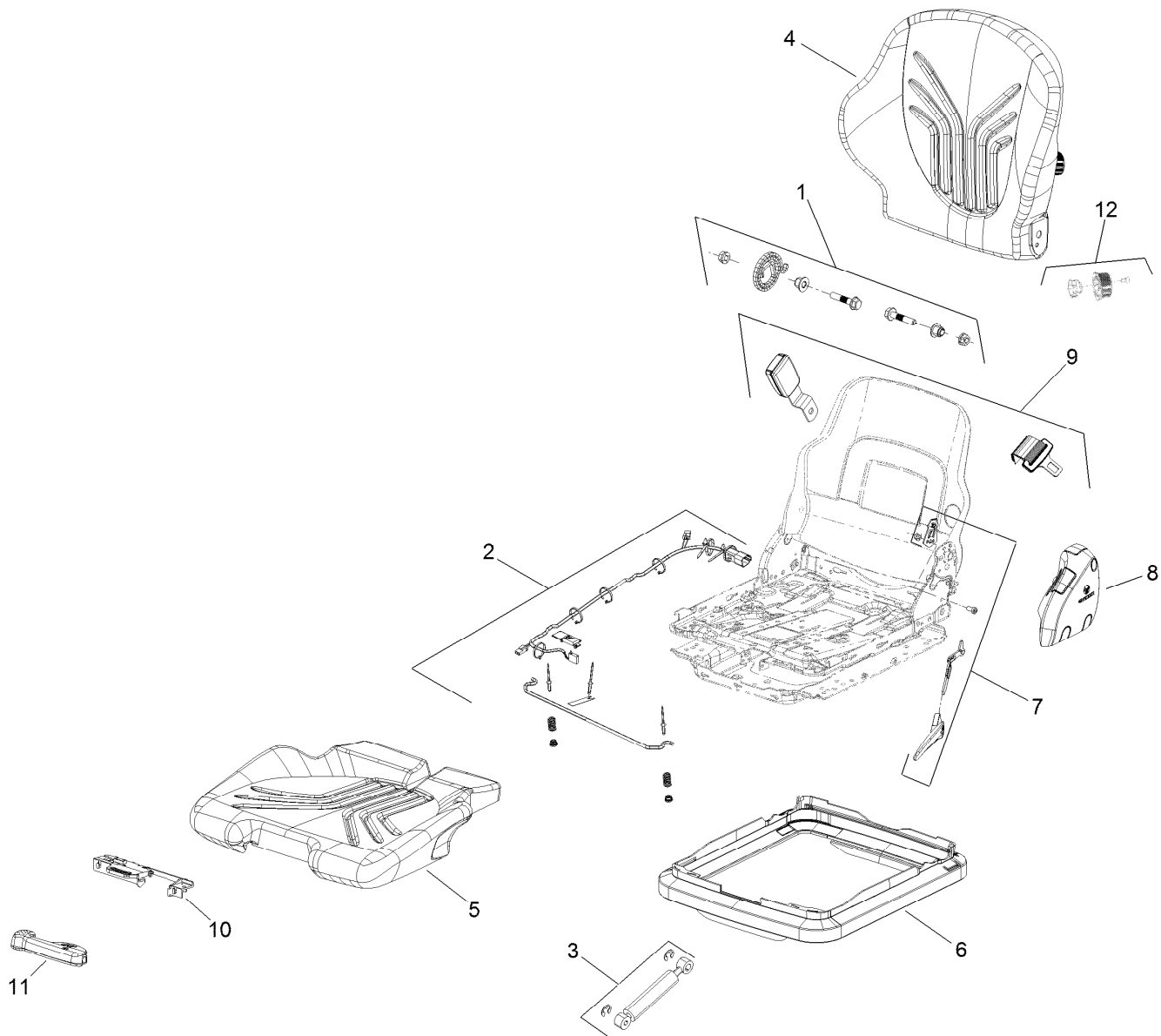
## Premium Seat Assembly

Ref.	Part Number	Qty.	Description
1	119-7102	1	Seat And Console Support ASM
2	114-9088-03	1	Bracket-Seat, RH
3	114-9087-03	1	Bracket-Seat, LH
4	119-4483	1	Seat Adjuster Lever ASM
5	233-48	1	Knob
6	92-8990	1	Adjuster-Slave
7	104-8300	8	Nut-HF, NI
8	3256-23	4	Washer-Plain
9	3274-10	4	Screw-HSH
10	119-5792	1	Harness-Wire, Seat Adapter
13	322-3	4	Screw-HH
14	104-8300	4	Nut-HF, NI



## Seat and Console Support Assembly No. 119-7102

<i>Ref.</i>	<i>Part Number</i>	<i>Qty.</i>	<i>Description</i>
1	114-1049	1	Seat ASM
2	132-3795	1	RH Console Bracket Kit



## Seat Assembly No. 114-1049

Ref.	Part Number	Qty.	Description
1	120-0568	1	Backrest Kit
2	120-0569	1	Switch Kit
3	120-0575	1	Shock Absorber Kit
4	132-3781	1	Back Cushion Kit (Vinyl, Grey)
5	132-3782	1	Seat Cushion Kit (Vinyl, Grey)
6	132-3783	1	Seat Bellows Kit
7	132-3784	1	Backrest Adjustment Kit
8	132-3785	1	LH Side Seat Frame Cover Kit
9	132-3787	1	Seatbelt Kit
10	132-3788	1	Handle Housing Kit
11	132-3789	1	Handle Kit (Grey)
12	132-3824	1	Lumbar Adjustment Knob Kit

**Notes:**



**Count on it.**