



Bagging Baffle Kit

for 48" OFZ Deck

Part No. 100-5841

**Installation
Instructions**

Loose Parts

Note: Use the chart below to identify parts for assembly.†

DESCRIPTION	QTY.	USE
Right-hand Baffle	1	Install Baffles
Left-hand Baffle	1	
Screw	6	
Flat Washer	4	
Retainer Nut	2	
Lock Nut	4	

Pre-Installation



WARNING

POTENTIAL HAZARD

- Blade is sharp.

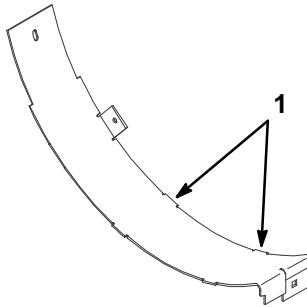
WHAT CAN HAPPEN

- Contact with sharp blade can cause serious personal injury.

HOW TO AVOID THE HAZARD

- Wear gloves or wrap sharp edges of the blade with a rag.

1. Disengage the power take off (PTO), set the parking brake, and turn the ignition key to "OFF" to stop the engine. Remove the key.
2. Tilt up deck and lock into vertical position. Refer to Tilting the Mower on page 4.
3. Thoroughly clean mower deck. All debris must be removed to ensure baffle will fit properly against mower deck.
4. Repair all bent or damaged areas of mower deck and replace any missing parts.
5. For decks with serial numbers below 895000, the locating tabs on the top side of the baffles must be ground off (Fig. 1).



m-4648

Figure 1
Right Baffle Shown

1. Locating tab
-

Removing Existing Baffles

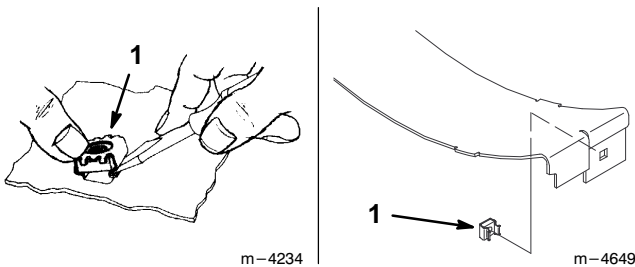
1. If in recycling mode, remove hardware for existing baffles and then remove baffles.

Installing Retainer Nuts

1. Install one retaining leg into the square opening of the right baffle (Fig. 2).
2. Push a screw driver into the other leg and insert the retaining nut into the square hole (Fig. 2).

Note: Ensure retainer nut is installed as shown in Figure 2.

3. Repeat steps 1 and 2 with the left baffle.



m-4234

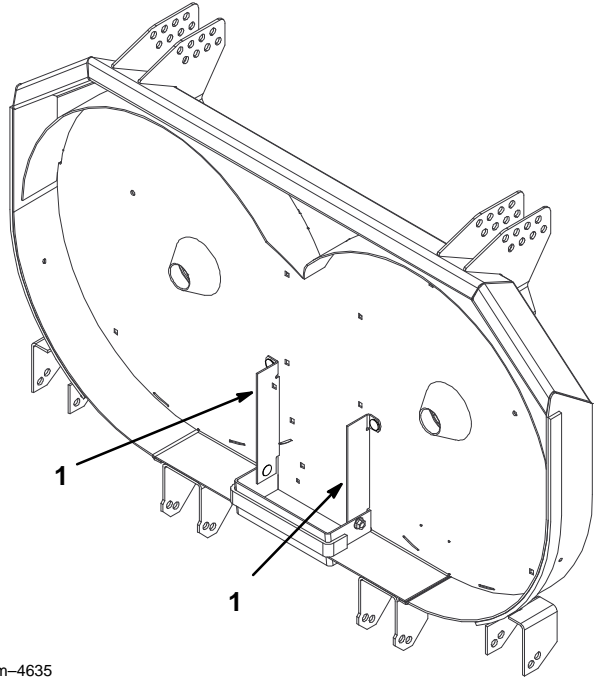
m-4649

Figure 2

1. Retainer Nut
-

Installing Baffles

1. Remove the discharge brackets from the cutting chamber (Fig. 3).

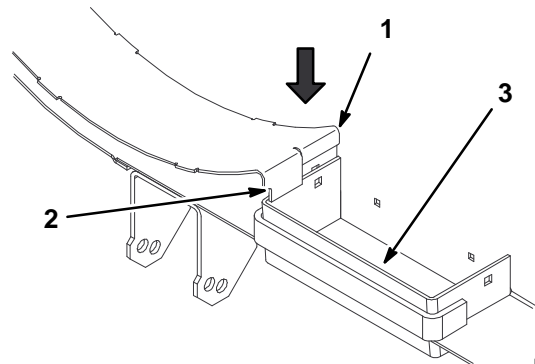


m-4635

Figure 3

1. Discharge bracket
-

2. Slide the baffles into place by placing the upper tab with the retainer nut on the outside of the discharge opening and the lower tab on the inside of the discharge opening (Fig. 4).



m-4642

Figure 4

1. Upper tab with retainer nut
 2. Lower tab
 3. Discharge opening
-

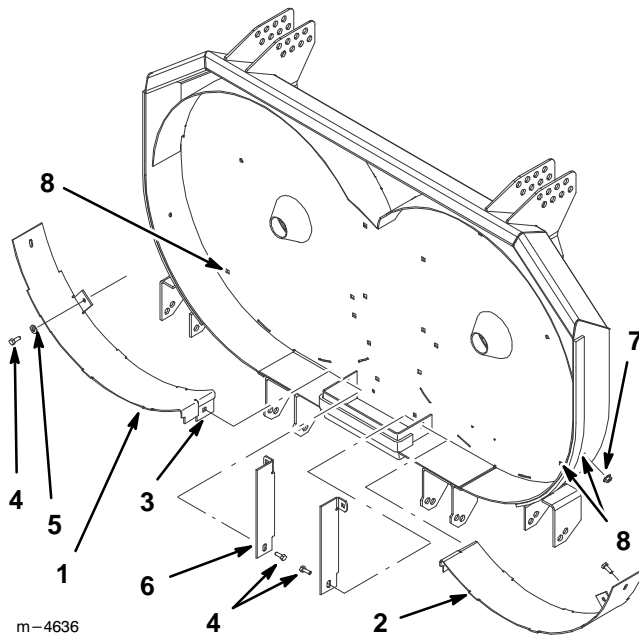


Figure 5

- | | |
|--------------------------------|----------------------|
| 1. Right baffle | 5. Washer |
| 2. Left baffle | 6. Discharge bracket |
| 3. Upper tab with retainer nut | 7. Lock Nut |
| 4. Screw | 8. Holes to drill |

3. Reattach the discharge brackets to the inside of the discharge opening and to the new bagging baffles with two screws (Fig. 5). Attach the discharge brackets to the cutting deck with two previously removed carriage bolts (Fig. 5).
4. To determine where you need to drill holes, arrange the baffle in the mower as shown in Figure 6. Rotate the blade to ensure that the clearance between the tip of the blade and the baffle is correct.

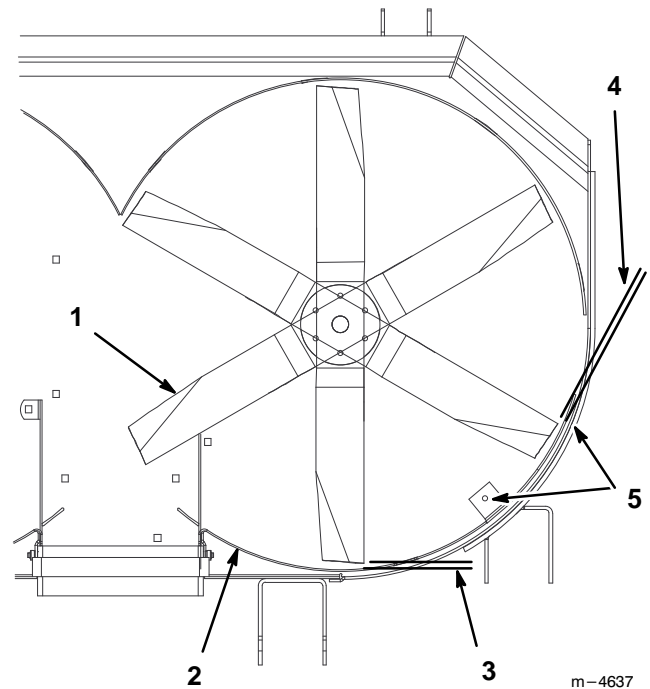


Figure 6

- | | |
|----------------------------|-------------------|
| 1. Blade (Left-hand Shown) | 4. 3/8" Clearance |
| 2. Left baffle | 5. Mark holes |
| 3. 1/4" Clearance | |

5. Mark the location of the two holes on the top of deck and the two holes on the side (Fig. 6).

IMPORTANT: Make sure the clearance between blade tip and baffle is correct. Refer to Figure 6.

6. Drill four 9/32" holes at the marked locations in the mower.
7. Install and tighten all mounting hardware securely (Fig. 5).
8. Disconnect the PTO shaft. Rotate all the blades to ensure that there is at least 1/4" and 3/8" clearance between the blades and baffles (Fig. 6). Reconnect the PTO shaft.

WARNING

POTENTIAL HAZARD

- A blade that is bent or damaged could break apart and pieces could be thrown at bystanders or at you as you use the mower.

WHAT CAN HAPPEN

- Pieces of blade that may be thrown could seriously injure or kill you or bystanders.

HOW TO AVOID THE HAZARD

- Always replace bent or damaged blade with a new blade.
- Never file or create sharp notches in the edges or surfaces of blade.

9. Make sure all unused holes in deck are plugged with a nut and bolt for safety.

DANGER

POTENTIAL HAZARD

- Open holes in the mower expose you and others to thrown debris.

WHAT CAN HAPPEN

- Debris thrown out of holes in the mower can cause injury.

HOW TO AVOID THE HAZARD

- Never operate mower without hardware mounted in all holes in mower.
- Install hardware in mounting holes when mulching baffle is removed.

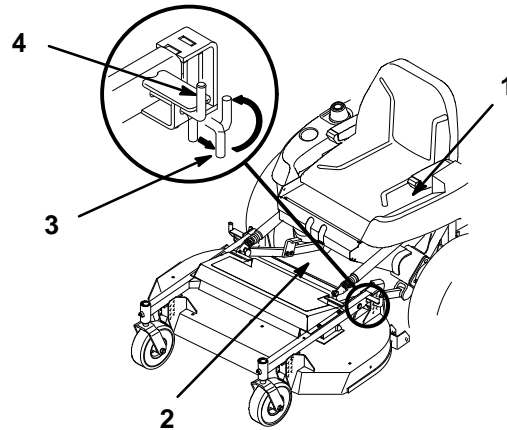
Tilting the Mower

The mower can be tilted up for ease of service.

To Raise Mower

1. Turn engine off, set the parking brake and check that PTO cover is down against deck.

2. Lift on the mower carrier frame to release weight on latch pin and pull out on latch pin to release (Fig. 7). Repeat on the other side. Lower rear of mower onto anti-scalp rollers.
3. Return the pins to the spring loaded (down) position.

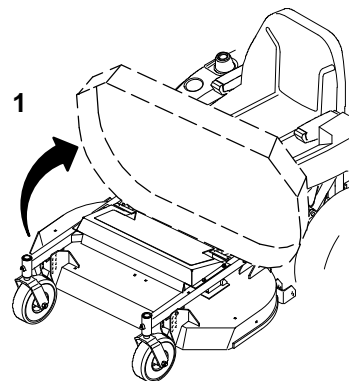


m-3374

Figure 7

- | | |
|------------------|---------------|
| 1. Parking brake | 3. Latch pin |
| 2. PTO cover | 4. Notch-open |

4. Standing in front of the mower, lift up and push rearward on front to raise mower (Fig. 8).
5. Raise mower until it contacts stops and latch pins snap into locked position.



m-3375

Figure 8

1. Mower up