

Baffle Kit

96 Inch Deck

Kit No. 142-3000

Installation Instructions

Safety Alert Symbol

This Safety Alert Symbol (Figure 1) is used both in this instruction sheet and on the machine to identify important safety messages which must be followed to avoid accidents

This symbol means: **ATTENTION! BECOME ALERT! YOUR SAFETY IS INVOLVED!**



Figure 1

Safety Alert Symbol

g000502

The safety alert symbol appears above information which alerts you to unsafe actions or situations and will be followed by the word **DANGER**, **WARNING**, or **CAUTION**.

DANGER: Indicates an imminently hazardous situation which, if not avoided, **Will** result in death or serious injury.

WARNING: Indicates a potentially hazardous situation which, if not avoided, **Could** result in death or serious injury.

CAUTION: Indicates a potentially hazardous situation which, if not avoided, **May** result in minor or moderate injury.

This instruction sheet uses two other words to highlight information. **Important** calls attention to special mechanical information and **Note** emphasizes general information worthy of special attention.

⚠ WARNING

While maintenance or adjustments are being made, someone could start the engine. Accidental starting of the engine could seriously injure you or other bystanders.

Remove the key from the ignition switch, engage parking brake, and pull the wire(s) off the spark plug(s) before you do any maintenance. Also push the wire(s) aside so it does not accidentally contact the spark plug(s).

Note: Determine the left and right sides of the machine from the normal operating position.

Note: Park the machine on a level surface. Make sure all moving parts have stopped, parking brake is engaged, the key has been removed, and the spark plug wire has been disconnected. Allow the machine to cool before starting these instructions.



Loose Parts

Use the chart below to verify that all parts have been shipped.

Item	Part No.	Description	Qty	Item	Part No.	Description	Qty
1	135-0792-01	Baffle-Dogleg, Center (LH)	1	9	135-1824-01	Fin-Baffle, Discharge Wing (LH)	1
2	135-2452-01	Baffle-Breaker	1	10	135-0794-01	Baffle-Dogleg, (LH)	1
3	135-2458	Guard-Discharge	1	11	109-6658	Nut-Nyloc 3/8-16 Flg	8
4	135-2453-01	Plate-Fin, Discharge	1	12	3231-12	Bolt-Carriage 3/8-16 x 7/8	8
5	135-2451-01	Baffle-Dogleg, Center (RH)	1	13	3234-11	Screw-HH Flg 3/8-16 x 1	9
6	135-2448-01	Baffle-Deflect, RH	1	14	98-5975	Washer-Spring Disc 3/8	9
7	135-0795-01	Baffle-Dogleg, RH	1	15	3230-22	Bolt-Carriage 5/16-18 x 1 Sp	4
8	135-0091	Flap-Rubber	1	16	104-8300	Nut-Nyloc 5/16-18 Flg	4

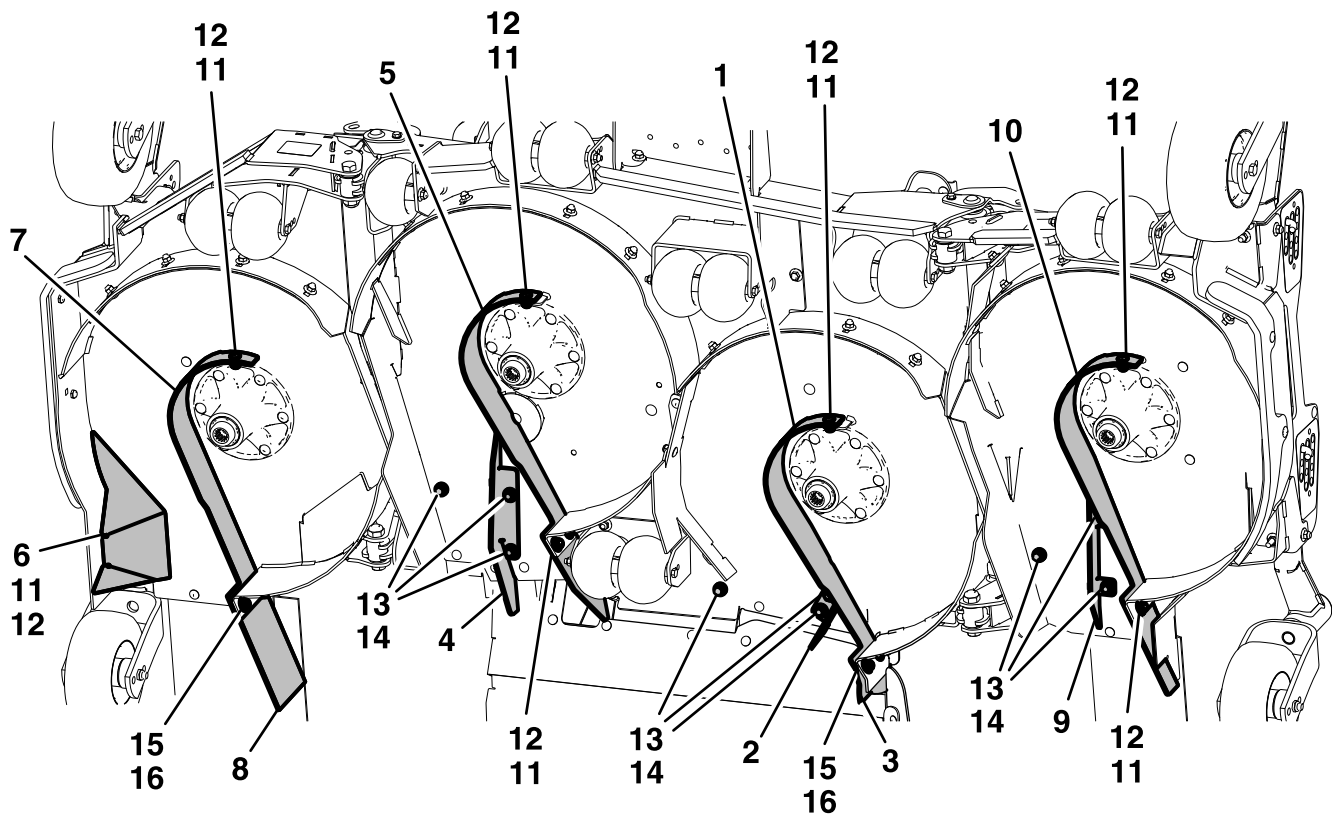


Figure 2
Blades removed for clarity

g315715

Installation Instructions

1. Make sure all moving parts have stopped, parking brake is engaged, and the key has been removed.
2. Be sure that all persons are clear of the deck wings. Press and hold the top of the deck control switch; the center deck will raise first and then the wings.
3. Remove the clevis pin and hairpin from the storage location and secure each wing in the up position as shown in [Figure 3](#).

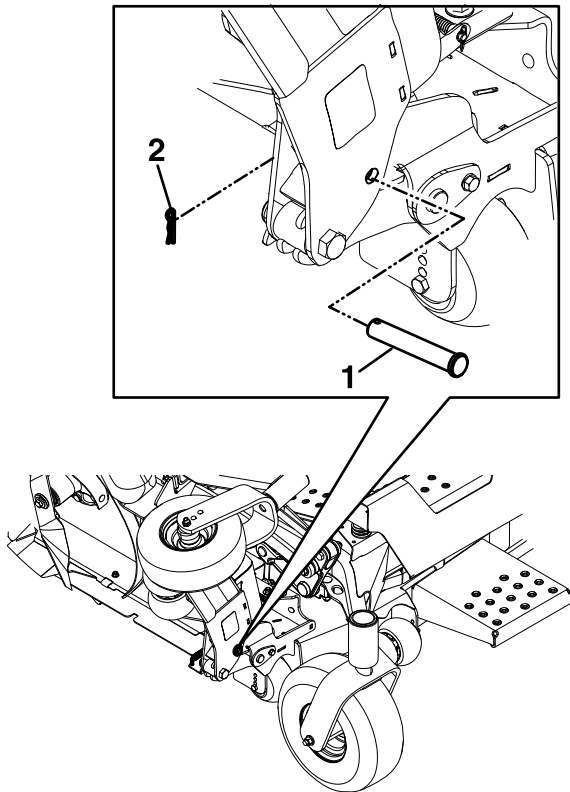
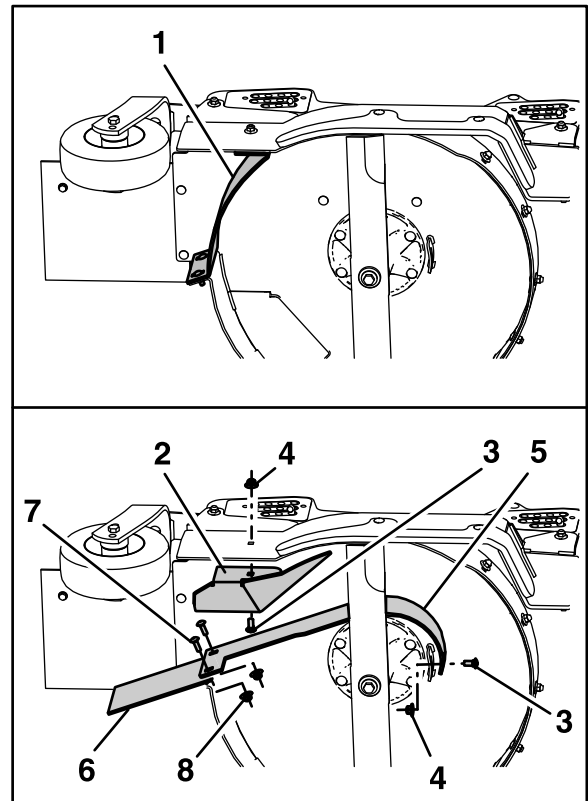


Figure 3

1. Clevis pin

2. Hairpin

4. Remove and retain the RH wing block baffle and its mounting hardware as shown in [Figure 4](#).



g315858

Figure 4

- | | |
|------------------------------------|-----------------------------------|
| 1. RH wing block baffle | 5. RH dogleg baffle |
| 2. RH deflect baffle | 6. Rubber flap |
| 3. 3/8-16 x 7/8 inch carriage bolt | 7. 5/16-18 x 1 inch carriage bolt |
| 4. 3/8-16 inch flanged nyloc nut | 8. 5/16 inch nyloc nut |
5. Install the RH deflect baffle using one 3/8-16 x 7/8 inch carriage bolt and one 3/8 inch flanged nyloc nut.
 6. Install the RH dogleg baffle on the outside of the baffle mount tab using one 3/8-16 x 7/8 inch carriage bolt and one 3/8 inch flanged nyloc nut.
 7. Insert the rubber flap between the dogleg baffle and the RH wing skirt and secure using two 5/16-18 x 1 inch carriage bolts and two 5/16 inch nyloc nuts.
 8. Remove and retain the LH wing block baffle and its mounting hardware as shown in [Figure 5](#).

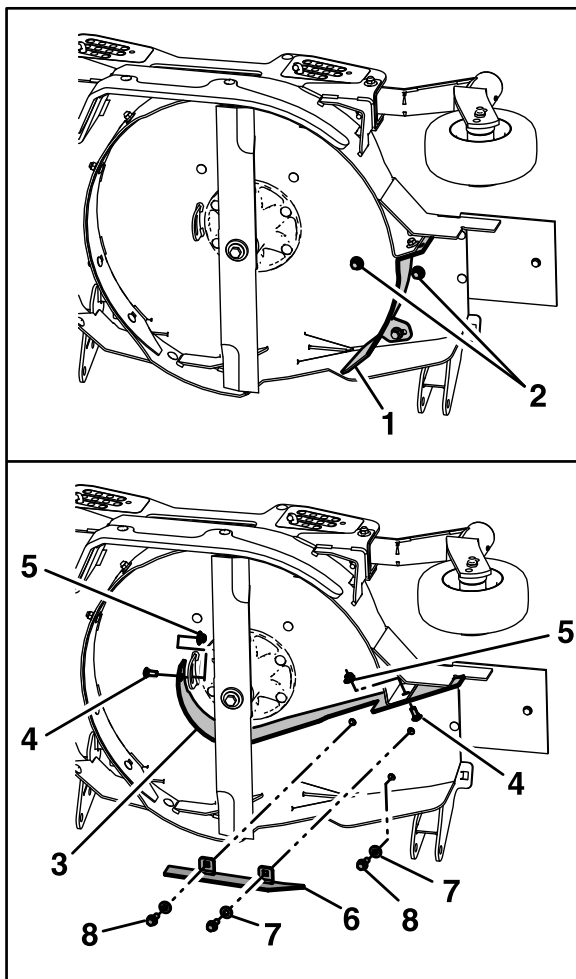


Figure 5

g316863

1. LH wing block baffle
2. 3/8-16 x 1 inch hex flange screw
3. Spring disc washer

⚠ CAUTION

Raising the mower deck for service or maintenance relying solely on mechanical or hydraulic jacks could be dangerous. The mechanical or hydraulic jacks may not be enough support or may malfunction allowing the unit to fall, which could cause injury.

Do Not rely solely on mechanical or hydraulic jacks for support. Use adequate jack stands or equivalent support.

14. Remove and retain the two center block baffles and mounting hardware. Remove and retain the four 3/8-16 x 1 inch hex flange screws and spring disc washers as shown in [Figure 6](#).

9. Remove the two 3/8-16 x 1 inch hex flange screws and spring disc washer from the deck as shown in [Figure 5](#).
10. Install the LH dogleg baffle on the outside of the baffle mount tab using one 3/8-16 x 7/8 inch carriage bolt and 3/8 inch flanged nyloc nut. Secure to the skirt using one 3/8-16 x 7/8 inch carriage bolt and 3/8 inch flanged nyloc nut.
11. Using two 3/8-16 x 1 inch hex flange screws and two spring disc washers secure the LH fin baffle to the deck.
12. Plug the remaining hole of the removed block baffle with 3/8-16 x 1 inch hex flange screws and spring disc washer.
13. Raise the front of the machine and support with jack stands.

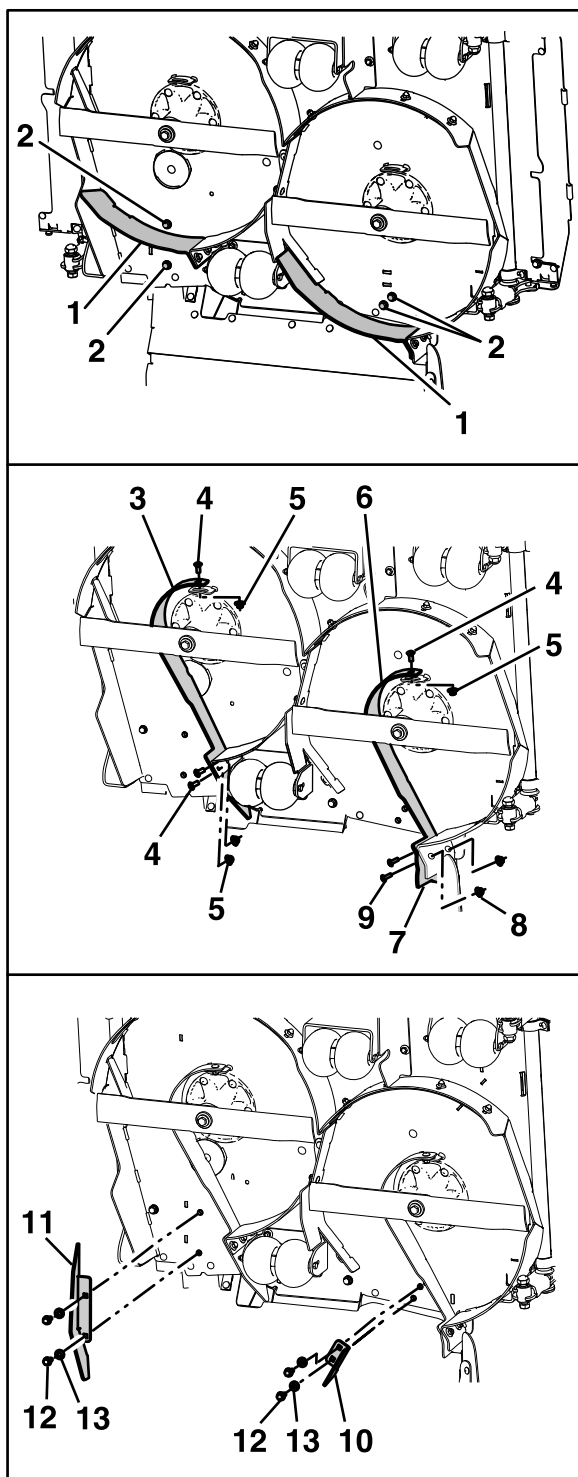


Figure 6

g316887

- | | |
|-------------------------------|---------------------------------------|
| 1. Center block baffle | 8. 5/16 inch flanged nyloc nut |
| 2. Remove and retain | 9. 5/16-18 x 1 inch bolt |
| 3. RH center dogleg baffle | 10. Breaker baffle |
| 4. 3/8-16 x 7/8 inch bolt | 11. Fin discharge plate |
| 5. 3/8 inch flanged nyloc nut | 12. 3/8-16 x 1 inch flanged hex screw |
| 6. LH center dogleg baffle | 13. Spring disc washer |
| 7. Discharge guard | |

15. Install the right and left dogleg baffles on the outside of the baffle mount tab using two 3/8-16 x 7/8 inch bolt and one 3/8 inch flanged nyloc nut.
16. Place the discharge guard between the left dogleg baffle and the deck skirt and secure using two 5/16-18 x 1 inch bolts and two 5/16 inch flanged nyloc nuts.
17. Secure the right dogleg baffle to the deck using two 3/8-16 x 7/8 inch bolts and two 3/8 inch flanged nyloc nuts.
18. Install the fin discharge baffle using two 3/8-16 x 1 inch flanged hex screws and two 3/8 inch spring disc washers.
19. Install the breaker baffle using two 3/8-16 x 1 inch flanged hex screws and two 3/8 inch spring disc washers.
20. Tighten all hardware.
21. Carefully remove the jack stands and lower the machine to the ground.