



# 48" Side Discharge Mower

## For Wheelhorse<sup>®</sup> Lawn & Garden Tractors

Model No. 78261 – 20000001 and Up

## Parts Catalog

### Ordering Replacement Parts

To order replacement parts, please supply: the part number, the quantity, and the description of each part desired.

### Understanding Reference Numbers

Each identified part in an illustration has a reference number. The reference number for a part also appears in the parts list, along with other information about the part.

This catalog uses two special reference number formats, one to indicate parts in a service assembly and another to indicate the quantity of a given part in an illustration.

### Service Assembly Reference Numbers

Parts in service assemblies have reference numbers in the form **a:b**. The **a** represents the reference number of the entire service assembly and the **b** represents a sequential number unique to each part within the service assembly.

For example, a wheel assembly might be identified by reference number **6**, the tire by **6:1**, the valve by **6:2**, and the wheel by **6:3**. When you order the assembly identified by reference number **6**, you receive all parts identified by reference numbers **6:1**, **6:2**, and **6:3**. However, you may also order any part individually.

Reference numbers of this type appear in illustrations and in part lists.

### Reference Numbers Indicating Quantity

In an illustration, if a reference number indicates more than one part, the reference number has the form **nX y**. The **n** represents the quantity of the part, the **X** is the multiplication symbol, and the **y** represents the reference number.

For example, in an illustration, the reference number **2X 37** means that two of the parts identified by reference number **37** are indicated.

## Contents

| Description                        | Page | Description                    | Page |
|------------------------------------|------|--------------------------------|------|
| Reinforcement Plate Assembly ..... | 3    | Deck Suspension Assembly ..... | 6    |
| Washout & Lever Assembly .....     | 4    | Decals .....                   | 7    |
| Spindle & Blade Assembly .....     | 5    |                                |      |

## Accessories

| Description | Model / Part No. | Description | Model / Part No. |
|-------------|------------------|-------------|------------------|
| ..          |                  |             |                  |

## Part Description Abbreviations

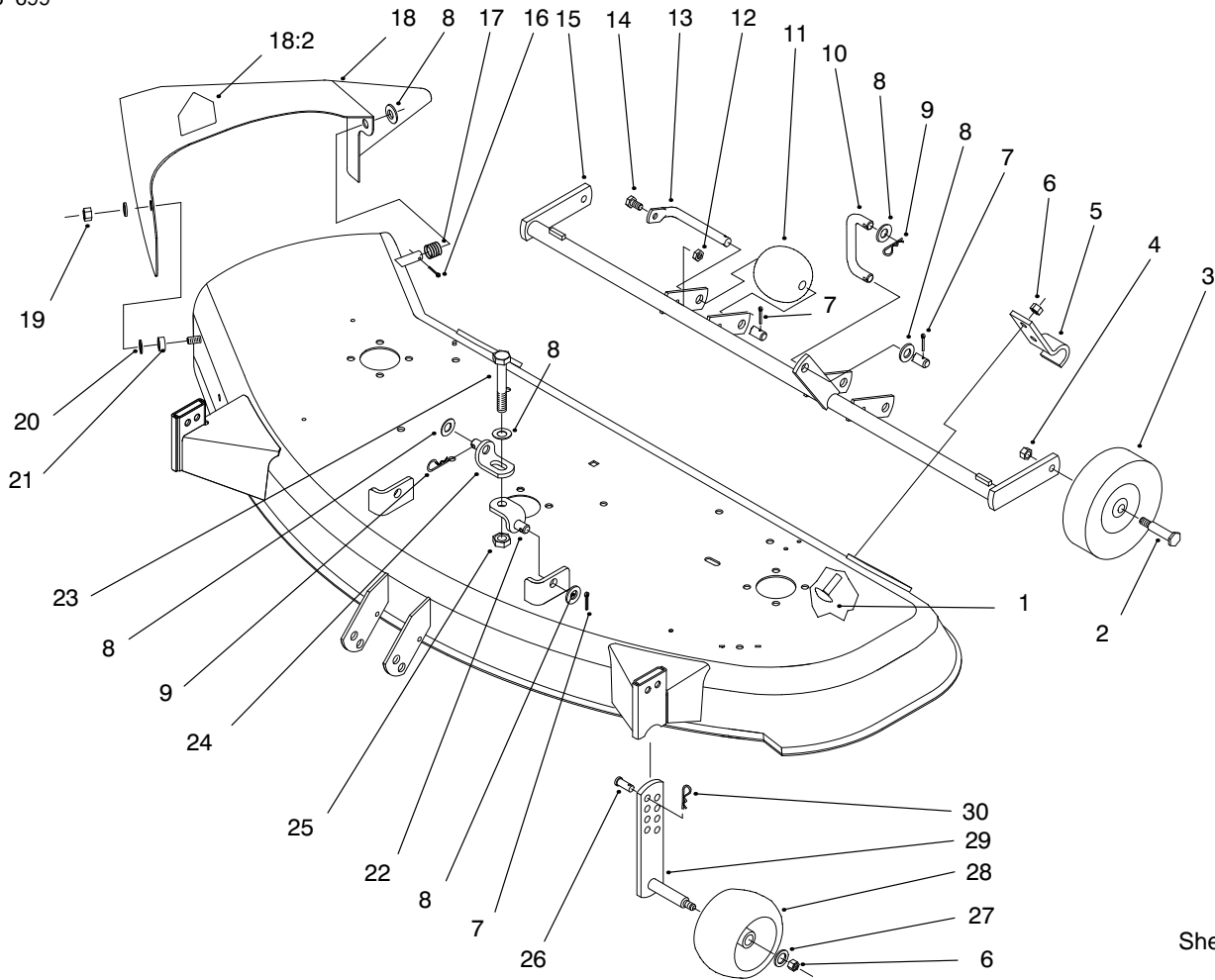
Part descriptions in this catalog may include the following abbreviations.

| Abbreviation | Meaning                           | Abbreviation | Meaning                 |
|--------------|-----------------------------------|--------------|-------------------------|
| AR .....     | as required                       | INC .....    | incorporated            |
| ASM .....    | assembly                          | LH .....     | left hand               |
| CARR .....   | carriage                          | NI .....     | nylon insert            |
| DEG .....    | degrees                           | PPH .....    | Phillips pan head       |
| FH .....     | flat head                         | PTH .....    | Phillips truss head     |
| GA .....     | gauge                             | PTO .....    | power take off          |
| HF .....     | hex flange                        | RH .....     | right hand              |
| HH .....     | hex head                          | SFH .....    | slotted fillister head  |
| HHF .....    | hex head flange                   | SHH .....    | slotted hex head        |
| HLH .....    | hex lag head                      | SQH .....    | square head             |
| HJ .....     | hex jam                           | SHWH .....   | slotted hex washer head |
| HOC .....    | height-of-cut                     | SPH .....    | slotted pan head        |
| HS .....     | hex socket                        | SRH .....    | slotted round head      |
| HSBH .....   | hex socket button head            | STD .....    | standard                |
| HSFH .....   | hex socket flat head              | TAP .....    | self tapping            |
| HSH .....    | hex socket head                   | TTH .....    | Torx truss head         |
| HWH .....    | hex washer head                   | WH .....     | wing head               |
| HWHTF .....  | hex washer head<br>thread forming |              |                         |







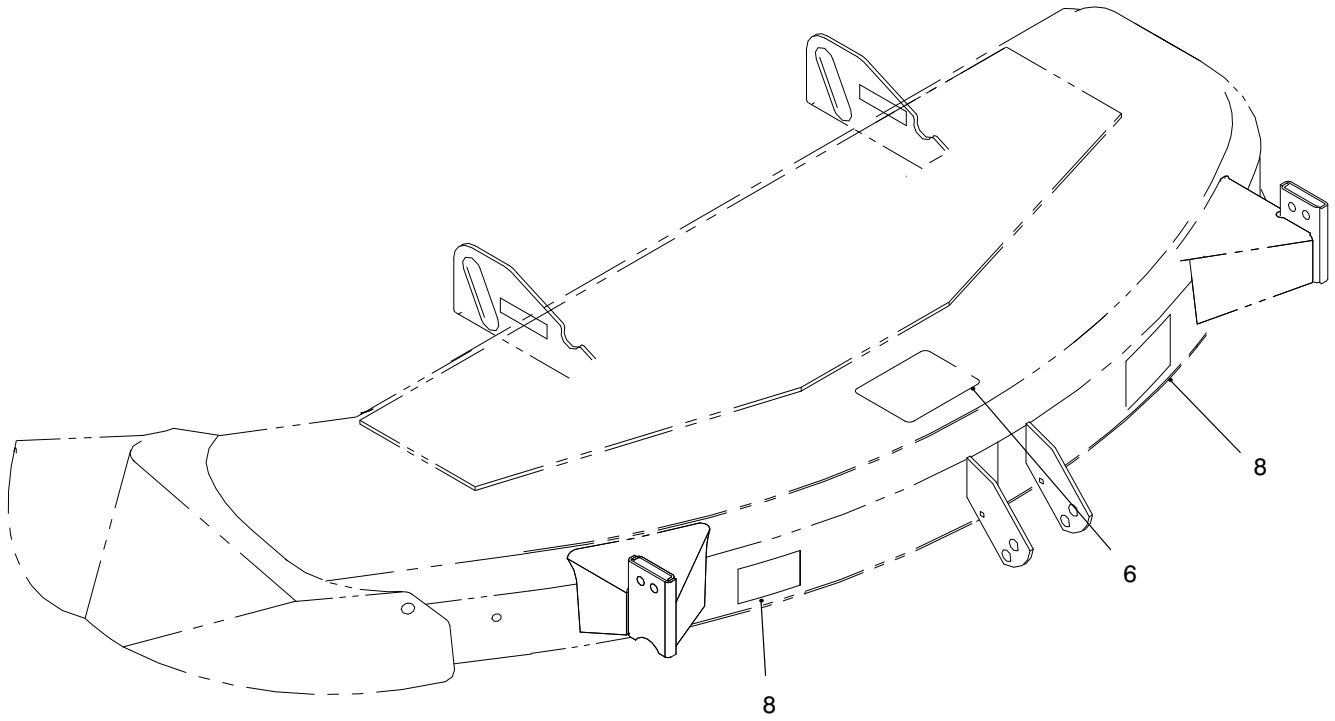


Sheet No.:4

## Deck Suspension Assembly

| Ref. No. | Part No.   | Qty. | Description          |
|----------|------------|------|----------------------|
| 1        | 3231-25    | 4    | Screw-CARR           |
| 2        | 92-1057    | 2    | Bolt-Shoulder        |
| 3        | 92-6959    | 2    | Wheel                |
| 4        | 32146-2    | 2    | Nut-Lock Ni          |
| 5        | 110837-03  | 2    | Pivot-Bracket        |
| 6        | 3296-39    | 6    | Nut-Lock Ni          |
| 7        | 3272-21    | 6    | Pin-Cotter           |
| 8        | 3256-26    | 9    | Washer-Flat          |
| 9        | 9335064    | 3    | Pin-Hair             |
| 10       | 79-5380    | 1    | Link-Rear            |
| 11       | 29-4820    | 3    | Roller               |
| 12       | 3296-42    | 3    | Nut-Lock             |
| 13       | 118960-03  | 3    | Shaft-Roller         |
| 14       | 321-4      | 3    | Screw-HH             |
| 15       | 79-4140-03 | 1    | Support-Gage Wheel   |
| 16       | 3272-10    | 1    | Pin-Cotter           |
| 17       | 93-1630    | 1    | Spring - Deflector   |
| 18       | 99-3708    | 1    | Chute ASM            |
| 18:2     | 93-1122    | 1    | Decal - Danger       |
| 19       | 9152366    | 1    | Nut-Jam, Hexagon     |
| 20       | 93-1633    | 2    | Washer - Black Nylon |
| 21       | 116080     | 1    | Bushing-Pivot        |
| 22       | 86-9250    | 2    | Bracket-Lift, Upper  |
| 23       | 325-13     | 2    | Screw-HH             |
| 24       | 86-9240    | 2    | Bracket-Lift, Lower  |
| 25       | 3218-5     | 2    | Nut-Jam              |

| Ref. No. | Part No. | Qty. | Description |
|----------|----------|------|-------------|
| 26       | 283-2    | 2    | Pin-Clevis  |
| 27       | 3256-24  | 2    | Washer-Flat |
| 28       | 68-2730  | 2    | Wheel-Gage  |
| 29       | 68-2350  | 2    | Wheel-Gage  |
| 30       | 9335054  | 2    | Pin-Hair    |



Sheet No.:5

## Decals

| Ref. No. | Part No. | Qty. | Description        |
|----------|----------|------|--------------------|
| 6        | 116286   | 1    | Decal-Belt Install |
| 8        | 68-3380  | 2    | Decal - Wheel Adj. |

| Ref. No. | Part No. | Qty. | Description |
|----------|----------|------|-------------|
|          |          |      |             |

