



Blower and Drive Kit

Z Master® Professional 7500-D Series Riding Mower with 60in or 72in TURBO FORCE® Side Discharge Mower

Model No. 78583—Serial No. 400000000 and Up

Model No. 78585—Serial No. 400000000 and Up

Installation Instructions

Loose Parts

Use the chart below to verify that all parts have been shipped.

Procedure	Description	Qty.	Use
1	No parts required	—	Prepare the machine.
2	No parts required	—	Remove the existing belt cover, belt, and bracket.
3	Pulley assembly	1	Install the pulley assembly and belt (for machines with a cast-iron spindle).
4	Pulley assembly Pulley-plate mount Flange nut (3/8 inch)	1 1 3	Install the pulley assembly and belt (for machines with an aluminum spindle).
5	Belt-cover bracket Carriage bolt (1/4 x 3/4 inch) Locknut (1/4 inch)	1 2 2	Install the new belt-cover bracket.
6	Blower assembly Bagger belt Blower belt cover Spring Knob	1 1 1 1 1	Install the blower, bagger belt, spring, and belt cover.

Note: Determine the left and right sides of the machine from the normal operating position.



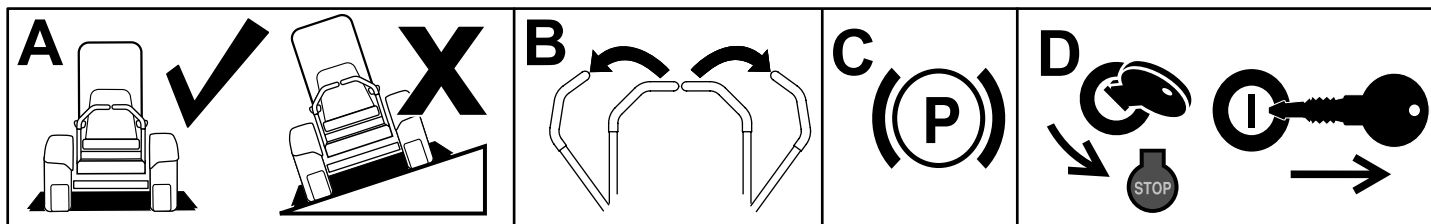
1

Preparing the Machine

No Parts Required

Procedure

1. Park the machine on a level surface.
2. Move the motion-control levers to the NEUTRAL-LOCK position.
3. Engage the parking brake.
4. Shut off the engine and remove the key.



g037289
g037289

Figure 1

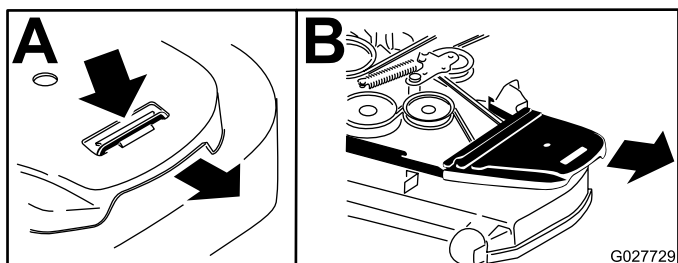
2

Removing the Existing Belt Cover, Belt, and Bracket

No Parts Required

Procedure

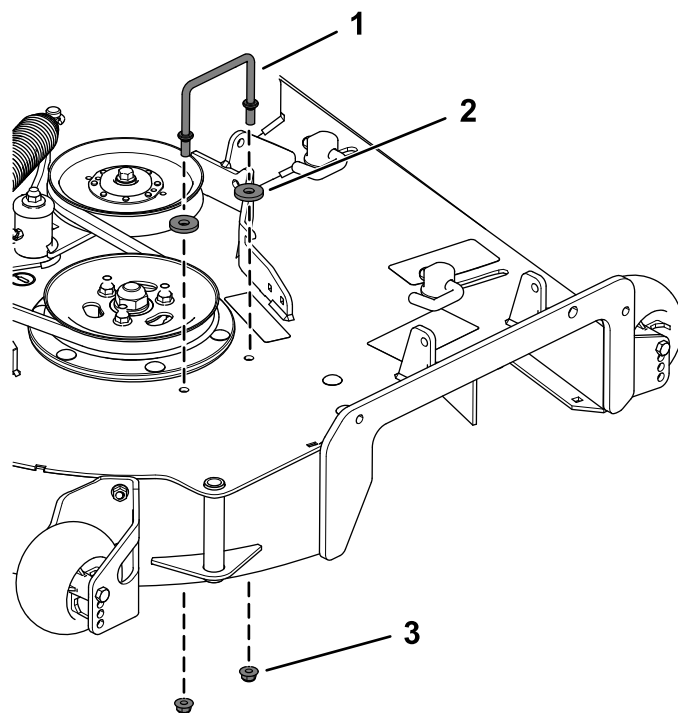
1. Lower the mower deck to the lowest height-of-cut position.
2. Remove the right belt cover (Figure 2).



G027729
g027729

Figure 2

3. Remove the existing right belt cover bracket (Figure 3).



g254130

Figure 3

1. Right belt cover bracket
2. Washer
3. Flange nut

4. Store the right belt cover, bracket, and hardware for later use if you remove the bagger blower and pulley.
5. Remove and retain the deck belt.

3

Installing the Pulley Assembly and Belt

For Machines with a Cast-Iron Spindle

Parts needed for this procedure:

1	Pulley assembly
---	-----------------

Procedure

1. Remove the flange nuts from the existing mower deck pulley (Figure 4).

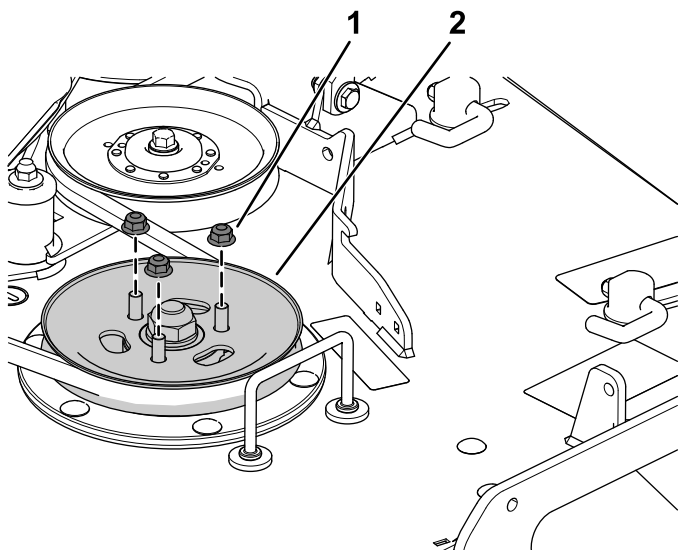


Figure 4

1. Flange nut
2. Existing mower deck pulley

2. Align the new pulley assembly so that the openings fit over the pulley studs (Figure 5).

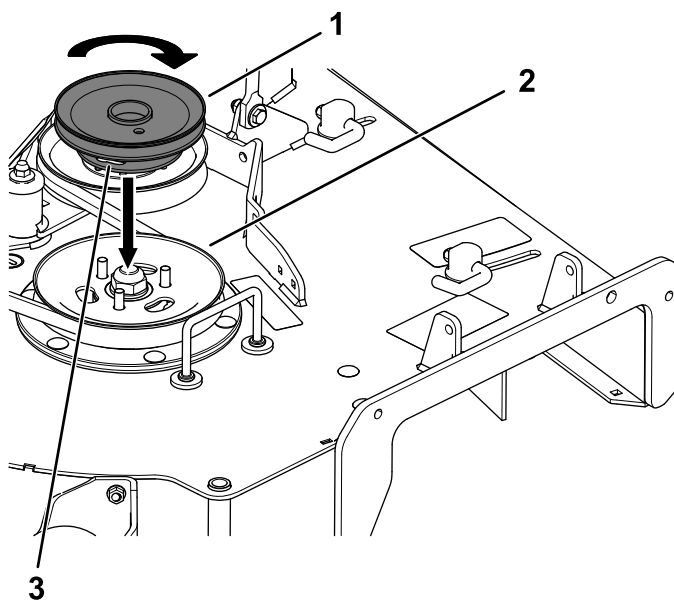


Figure 5

1. New pulley assembly
2. Existing mower deck pulley and pulley studs
3. Locking slots

3. Turn the pulley to lock it into position and install the flange nuts (Figure 6).
4. After the new pulley assembly is in position, tighten the flange nuts to secure new pulley assembly.

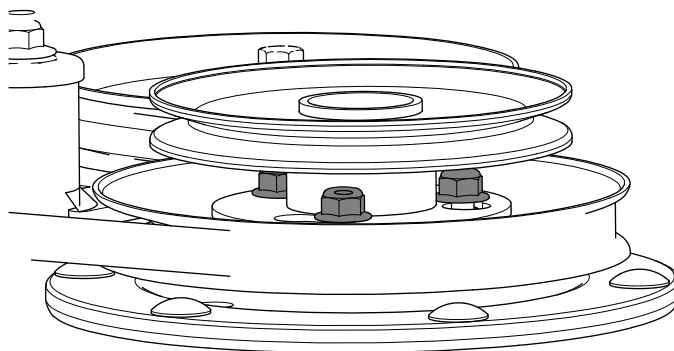


Figure 6

5. Torque the nuts to 28 to 34 N·m (21 to 25 ft-lb).
6. Install the deck belt.

4

Installing the Pulley Assembly and Belt

For Machines with an Aluminum Spindle

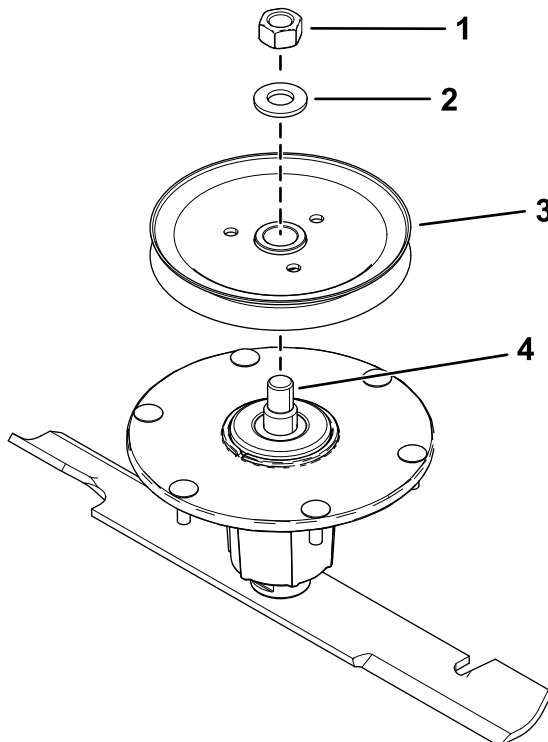
Parts needed for this procedure:

1	Pulley assembly
1	Pulley-plate mount
3	Flange nut (3/8 inch)

Procedure

1. Remove the top nut, washer, and sheave from the spindle (Figure 7).

Note: Note the orientation of the sheave when you remove it from the spindle to ensure that you install it properly later in the process.

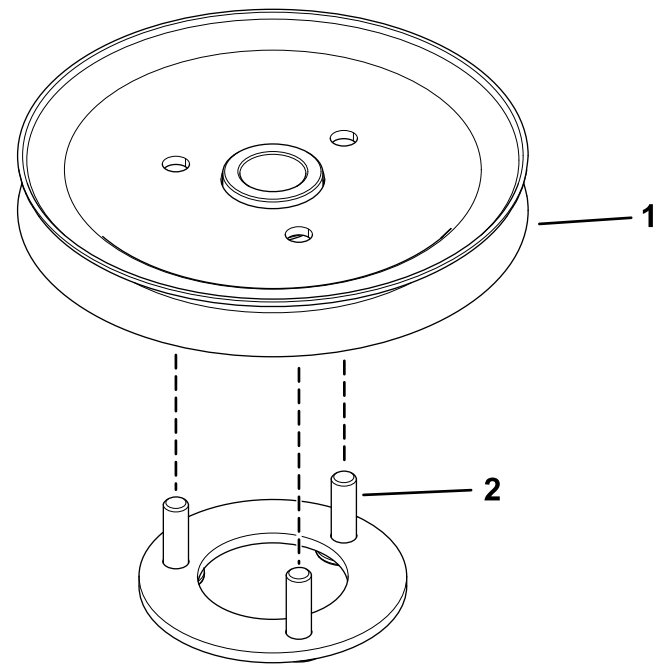


g302393

Figure 7

1. Top nut
2. Washer
3. Sheave
4. Spindle

2. Insert the pulley-plate mount studs into the holes in the sheave (Figure 8).

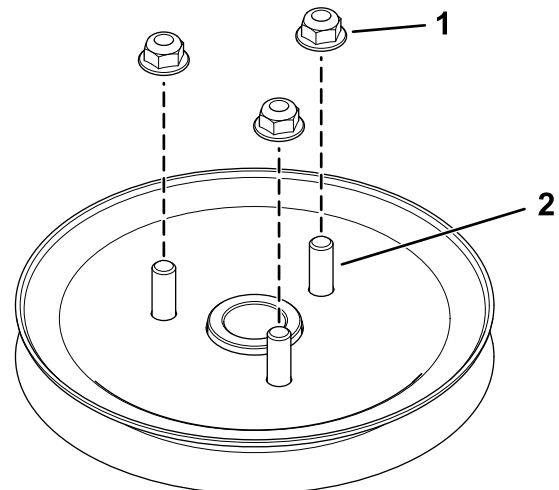


g302390

Figure 8

1. Sheave
2. Pulley-plate mount studs

3. Loosely install the 3 nuts to the studs (Figure 9). Leave a clearance of 5 mm (3/16 inch) between the nut and sheave.



g302412

Figure 9

1. Nut
2. Stud

4. Install the sheave assembly to the spindle using the washer and top nut (Figure 10).

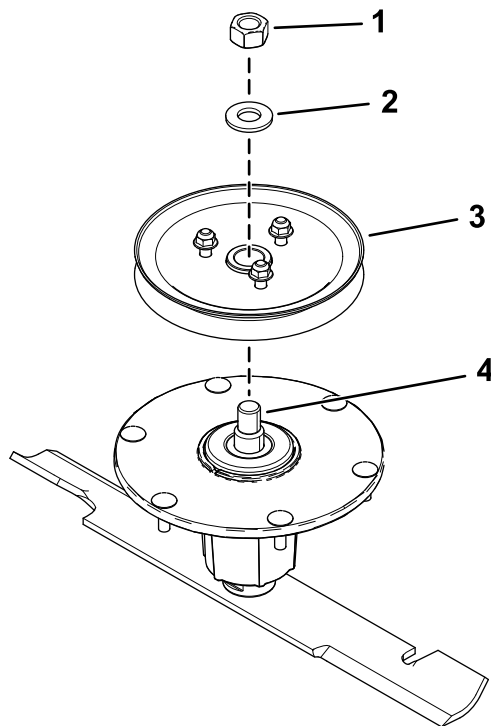


Figure 10

- | | |
|------------|--------------------|
| 1. Top nut | 3. Sheave assembly |
| 2. Washer | 4. Spindle |

5. Torque the top nut to 176 to 217 N·m (130 to 160 ft-lb).

Note: Ensure that the sheave spins freely.

6. Align the new pulley assembly so that the openings fit over the nuts (Figure 11).

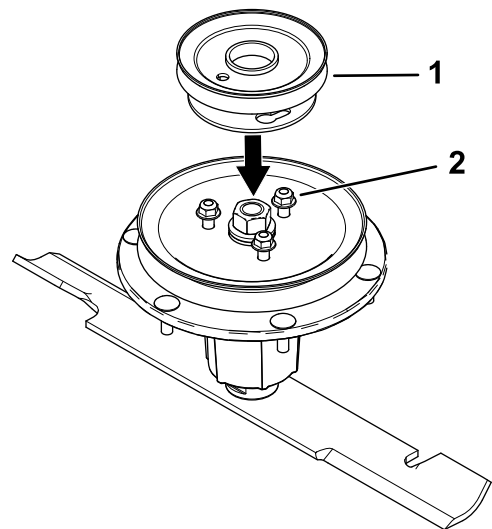


Figure 11

- | | |
|--------------------|---------|
| 1. Pulley assembly | 2. Nuts |
|--------------------|---------|

7. Turn the pulley to lock it into position (Figure 12).

Note: If the pulley does not turn, loosen the nuts more to raise the nuts and allow the pulley to lock into position.

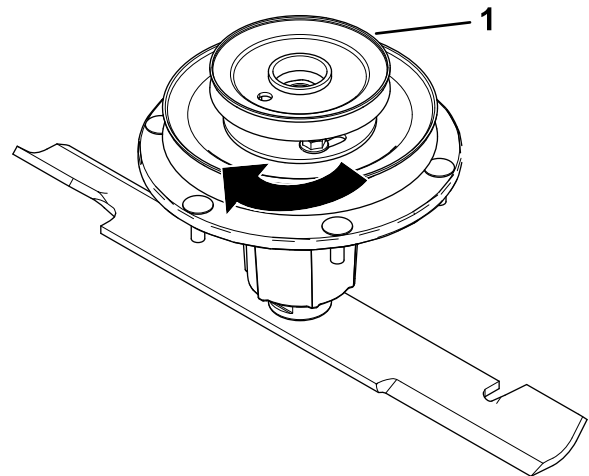


Figure 12

- | |
|--------------------|
| 1. Pulley assembly |
|--------------------|

8. After the new pulley assembly is in position, tighten the nuts to secure new pulley assembly. Torque the 3 nuts to 28 to 34 N·m (21 to 25 ft-lb).
9. Install the deck belt.

5

Installing the New Belt-Cover Bracket

Parts needed for this procedure:

1	Belt-cover bracket
2	Carriage bolt (1/4 x 3/4 inch)
2	Locknut (1/4 inch)

Procedure

Install the belt-cover bracket using the 2 carriage bolts (1/4 x 3/4 inch) and 2 locknuts (1/4 inch) as shown in [Figure 13](#).

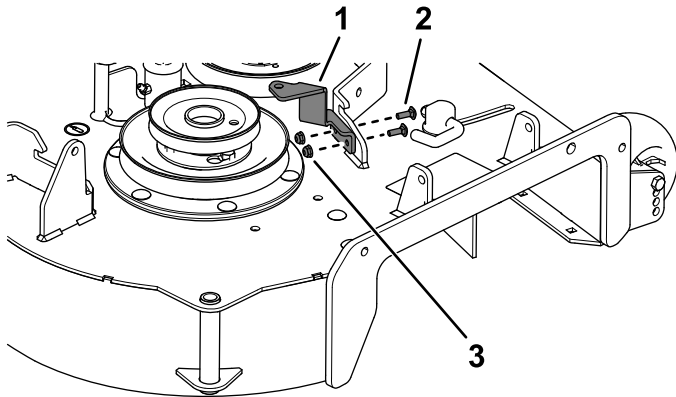


Figure 13

g254198

- | | |
|-----------------------------------|-----------------------|
| 1. Belt-cover bracket | 3. Locknut (1/4 inch) |
| 2. Carriage bolt (1/4 x 3/4 inch) | |

6

Installing the Blower Assembly, Bagger Belt, Spring and Blower-Belt Cover

Parts needed for this procedure:

1	Blower assembly
1	Bagger belt
1	Blower belt cover
1	Spring
1	Knob

Procedure

Refer to the bagger *Operator's Manual* for the correct procedure to install the blower, bagger belt, spring, and blower belt cover.

Notes:



Count on it.