



Dingo 320-D
Compact Utility Loader
Model No. 22303TE—990001 and Up

Parts Catalog

Ordering Replacement Parts

To order replacement parts, please supply: the part number, the quantity, and the description of each part desired.

Understanding Reference Numbers

Each identified part in an illustration has a reference number. The reference number for a part also appears in the parts list, along with other information about the part.

This catalog uses two special reference number formats, one to indicate parts in a service assembly and another to indicate the quantity of a given part in an illustration.

Service Assembly Reference Numbers

Parts in service assemblies have reference numbers in the form **a:b**. The **a** represents the reference number of the entire service assembly and the **b** represents a sequential number unique to each part within the service assembly.

For example, a wheel assembly might be identified by reference number **6**, the tire by **6:1**, the valve by **6:2**, and the wheel by **6:3**. When you order the assembly identified by reference number **6**, you receive all parts identified by reference numbers **6:1**, **6:2**, and **6:3**. However, you may also order any part individually.

Reference numbers of this type appear in illustrations and in part lists.

Reference Numbers Indicating Quantity

In an illustration, if a reference number indicates more than one part, the reference number has the form **nX y**. The **n** represents the quantity of the part, the **X** is the multiplication symbol, and the **y** represents the reference number.

For example, in an illustration, the reference number **2X 37** means that two of the parts identified by reference number **37** are indicated.

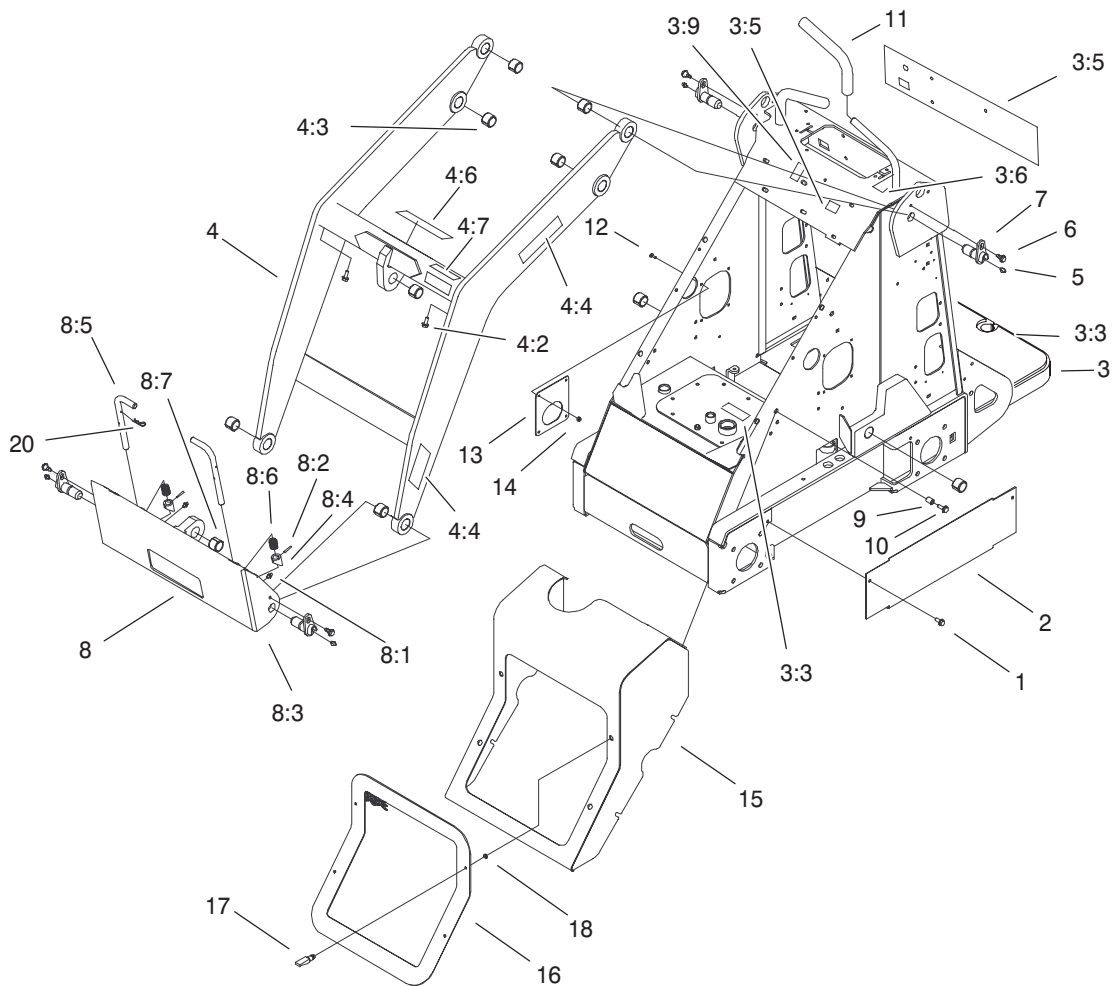
Contents

Description	Page	Description	Page
Frame and Loader Arm Assembly	3	Dipstick and Guide Assembly	31
Wheel and Motor Assembly	4	Main Bearing Case Assembly	32
Hydraulic Motor Assembly No. 99-3052	5	Camshaft Assembly	33
Radiator Mount Assembly	6	Piston and Crankshaft Assembly	34
Pump and Fan Mount Assembly	7	Flywheel Assembly	35
Engine Assembly	8	Fuel Camshaft Assembly	36
Fuel Tank and Air Filter Assembly	9	Engine Stop Lever Assembly	37
Hydraulic Tank Assembly	10	Injection Pump Assembly	38
Hydraulic Valve Assembly	11	Injection Pump (Complete Parts)	39
Hydraulic Valve Assembly No. 99-3069	13	Governor Assembly	40
Hydraulic Valve Assembly No. 99-3073	14	Speed Control Plate Assembly	41
Hydraulic Valve Assembly No. 99-3072	15	Nozzle Holder and Glow Plugs Assembly	42
Hydraulic Valve Assembly No. 99-3077	16	Nozzle Holder (Complete Parts)	43
Hydraulic Motor Assembly	17	Fuel Pump (Mechanical)	45
Hydraulic Cylinder Assembly	18	Dynamo and Pulley Assembly	46
Hydraulic Cylinder No. 99-3051	19	Dynamo (Complete Parts)	47
Rear Cover Assembly	20	Starter Assembly	48
Parking Brake Assembly	21	Starter (Complete Parts)	49
Electrical Components Assembly	22	Oil Switch and Thermostat Assembly	50
Decal Assembly	23	Water Flange and Thermostat Assembly	51
Electrical Schematic	24	Water Pump Assembly	52
Hydraulic Schematic	25	Water Pipe Assembly	53
Crankcase Assembly	26	Valve and Rocker Arm Assembly	54
Oil Pan Assembly	27	Inlet Manifold Assembly	55
Cylinder Head Assembly	28	Exhaust Manifold Assembly	56
Gear Case Assembly	29	Gasket Kit	57
Head Cover Assembly	30		

Part Description Abbreviations

Part descriptions in this catalog may include the following abbreviations.

Abbreviation	Meaning	Abbreviation	Meaning
AR	as required	INC	incorporated
ASM	assembly	LH	left hand
CARR	carriage	NI	nylon insert
DEG	degrees	PPH	Phillips pan head
FH	flat head	PTH	Phillips truss head
GA	gauge	PTO	power take off
HF	hex flange	RH	right hand
HH	hex head	SFH	slotted fillister head
HHF	hex head flange	SHH	slotted hex head
HLH	hex lag head	SQH	square head
HJ	hex jam	SHWH	slotted hex washer head
HOC	height-of-cut	SPH	slotted pan head
HS	hex socket	SRH	slotted round head
HSBH	hex socket button head	STD	standard
HSFH	hex socket flat head	TAP	self tapping
HSH	hex socket head	TTH	Torx truss head
HWH	hex washer head	WH	wing head
HWHTF	hex washer head thread forming		

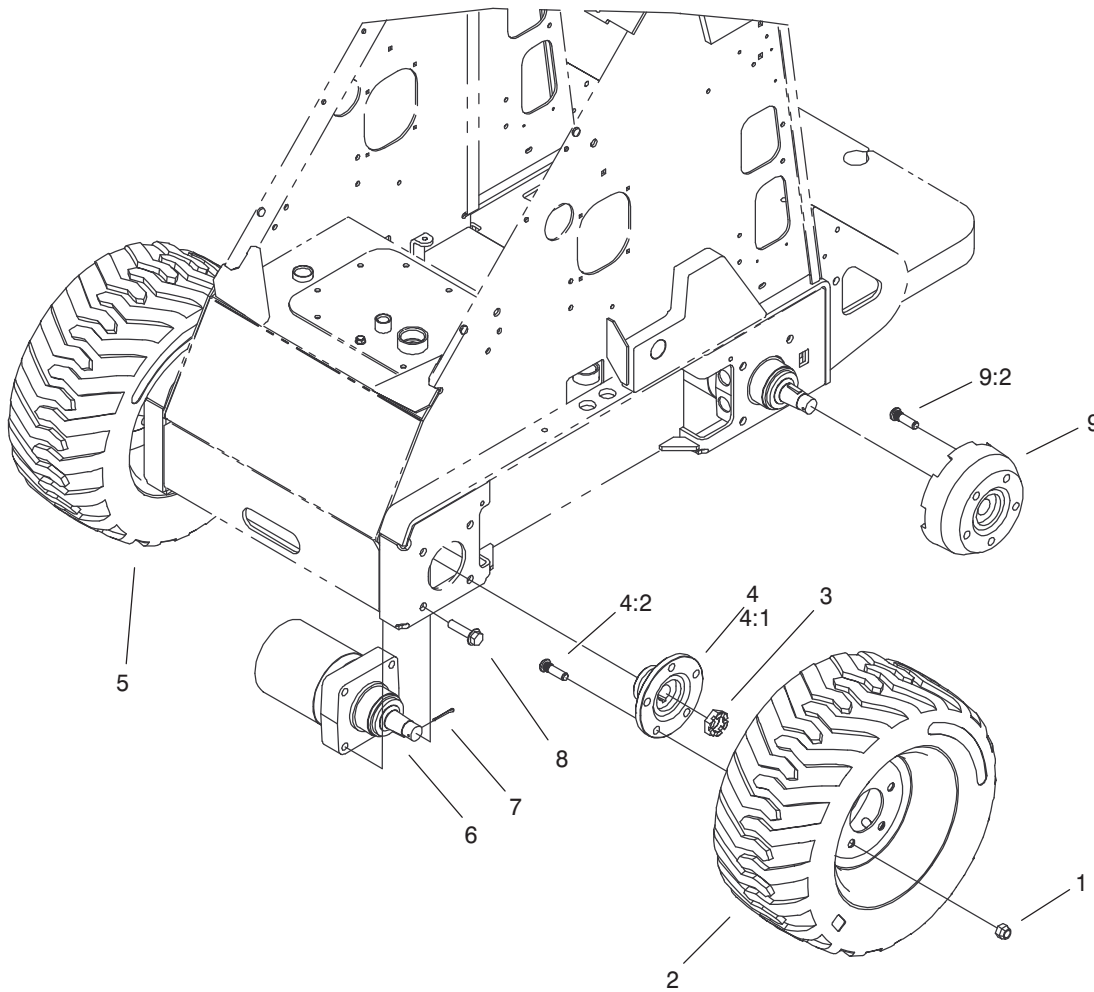


Sheet No.:2
C-2870

Frame and Loader Arm Assembly

Ref. No.	Part No.	Qty.	Description	Ref. No.	Part No.	Qty.	Description
1	32144-70	6	Screw-HH	8:4	98-4692	2	Cam-Attach, Quick
2	99-3020-01	2	Cover-Hose	8:5	100-3373	2	Pin-Qtach
3	99-3154	1	Frame & Decal ASM	8:6	98-4694	2	Spring-Compression
3:2	98-4871	2	Bushing-Tension	8:7	98-4871	1	Bushing-Tension
3:3	98-9947	2	Tread-Foot	9	32148-7	4	Nut-Insert
3:5	100-1706	1	Decal-Panel, Control	10	3234-29	4	Screw-HHF
3:6	98-8219	1	Decal-Throttle	11	98-4845	2	Grip-Cushion
3:7	100-1703	1	Decal-Limiter, Speed	12	3229-34	4	Bolt-CARR
3:8	93-6686	1	Decal-Oil, Hydraulic	13	99-1427-03	1	Guard-Muffler
3:9	98-8235	1	Decal-Selector	14	3296-2	4	Nut-Lock
*3:10	100-1704	1	Decal-Power, Auxiliary	15	99-5126-03	1	Hood ASM
4	99-3156	1	Loader ASM	16	99-3034-03	1	Cover ASM
4:2	32144-70	2	Screw-HH	17	74-5950	4	Latch-Swell
4:3	98-4871	7	Bushing-Tension	18	99-3058	4	Washer
4:4	93-9367	4	Decal-Warning	20	3290-468	2	Pin-Cotter, Hair
*4:5	100-1701	1	Decal-Danger				
4:6	100-1702	1	Decal-Caution				
4:7	99-3088	2	Decal-No Riders				
5	302-5	4	Fitting-Lube				
6	99-5105	4	Screw-Shoulder				
7	99-1414	4	Pin-Pivot				
8	98-4690	1	Quick Attach ASM				
8:1	302-5	2	Fitting-Lube				
8:2	32121-94	2	Pin-Special				
8:3	98-4691-03	1	Mount-Attach, Quick				

* Not Illustrated

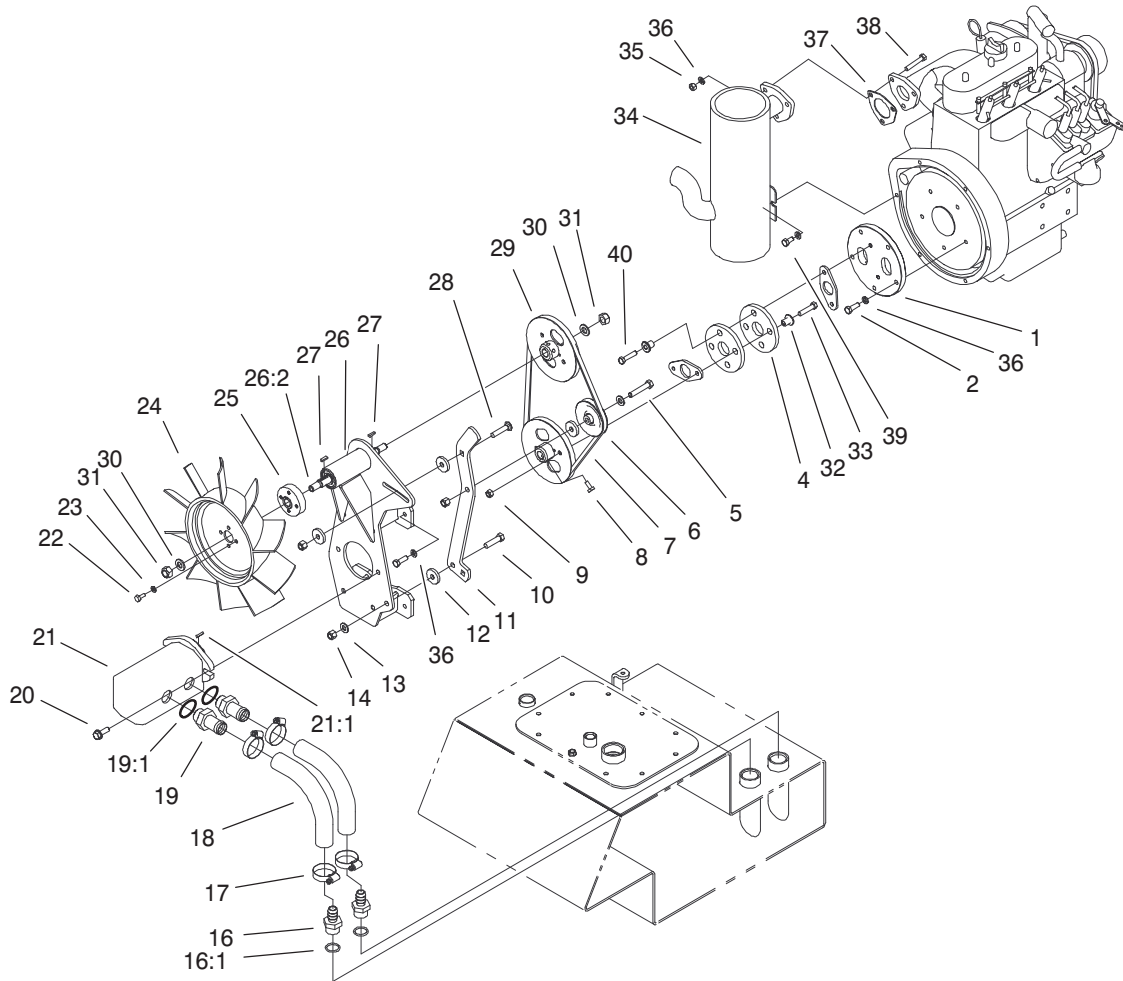


Sheet No.:3
C-2871

Wheel and Motor Assembly

Ref. No.	Part No.	Qty.	Description
1	242-50	20	Nut-Lug
2	98-2747	2	LH Wheel & Tire ASM
3	99-3139	4	Nut-Wheel, Motor
4	99-3064	2	Hub ASM
4:1	99-3053-03	1	Hub-Wheel
4:2	10-6830	5	Stud-Type, Drive
5	99-1447	2	RH Wheel & Tire ASM
6	99-3052	4	Hydraulic Motor ASM
7	99-3171	4	Pin - Cotter
8	3234-27	16	Screw-Flange
9	99-1440	2	Hub ASM
9:2	10-6830	5	Stud-Type, Drive

Ref. No.	Part No.	Qty.	Description

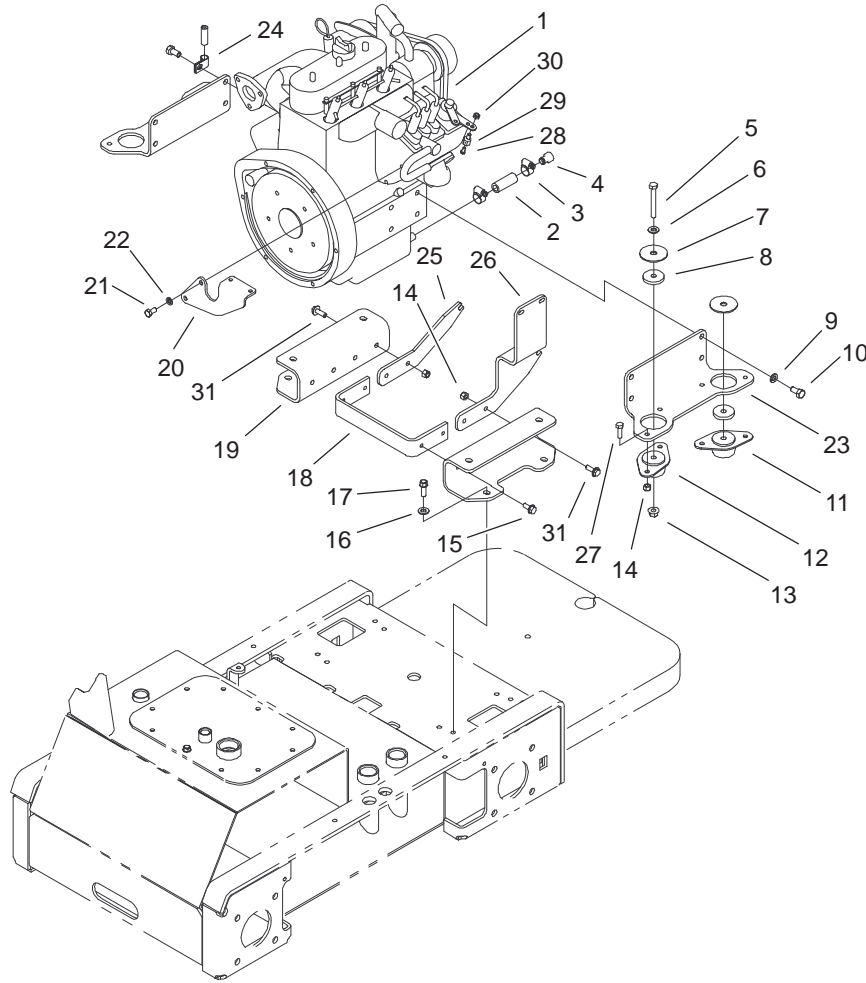


Sheet No.:5
C-2873

Pump and Fan Mount Assembly

Ref. No.	Part No.	Qty.	Description	Ref. No.	Part No.	Qty.	Description
1	99-1431	1	Adapter-Flywheel	24	99-5119	1	Fan
2	99-5131	9	Bolt	25	99-1439	1	Adapter-Fan
4	44-2230	2	Coupling-Rubber	26	99-1449	1	Pump Mount ASM
5	323-10	1	Screw-HH	26:2	99-5118	1	Shaft-Fan
6	63-8140	1	Pulley-Idler	*26:3	38-7820	2	Bearing-Ball
7	92-8876	1	V-Belt	27	100-1715	2	Key-Square
8	3241-5	2	Screw-Set	28	3231-5	1	Screw-CARR
9	3296-29	2	Nut-Lock	29	99-5111	2	Pulley-Keyed
10	323-8	1	Screw-HH	30	33096-00	2	Washer-Flat
11	100-1727-01	1	Mount-Tensioner	31	3296-19	2	Nut-Lock Ni
12	99-5121	4	Spacer	32	71-4411	4	Spacer
13	3256-24	2	Washer-Flat	33	322-7	2	Screw-HH
14	3296-39	3	Nut-Lock Ni	34	99-1442	1	Muffler-Kubota
16	354-78	2	Connector-Hose	35	3217-6	3	Nut-Hex
16:1	237-146	1	O-Ring	36	3253-4	13	Washer-Lock/Sp
17	2412-111	4	Clamp	37	100-2238	1	Gasket-Muffler
18	99-3046	2	Hose-Suction, Formed	38	322-9	3	Screw-HH
19	99-3017	2	Fitting	39	99-5132	1	Bolt
19:1	237-81	1	O-Ring	40	99-5133	2	Bolt
20	66-9300	2	Screw-Flange				
21	98-4702	1	Pump - Gear, Tandem				
21:1	98-4700	1	Key-Square				
*21:2	99-1353	1	Kit-Seal, Pump				
22	321-3	4	Screw-HH				
23	3253-3	4	Washer-Lock/Sp				

* Not illustrated

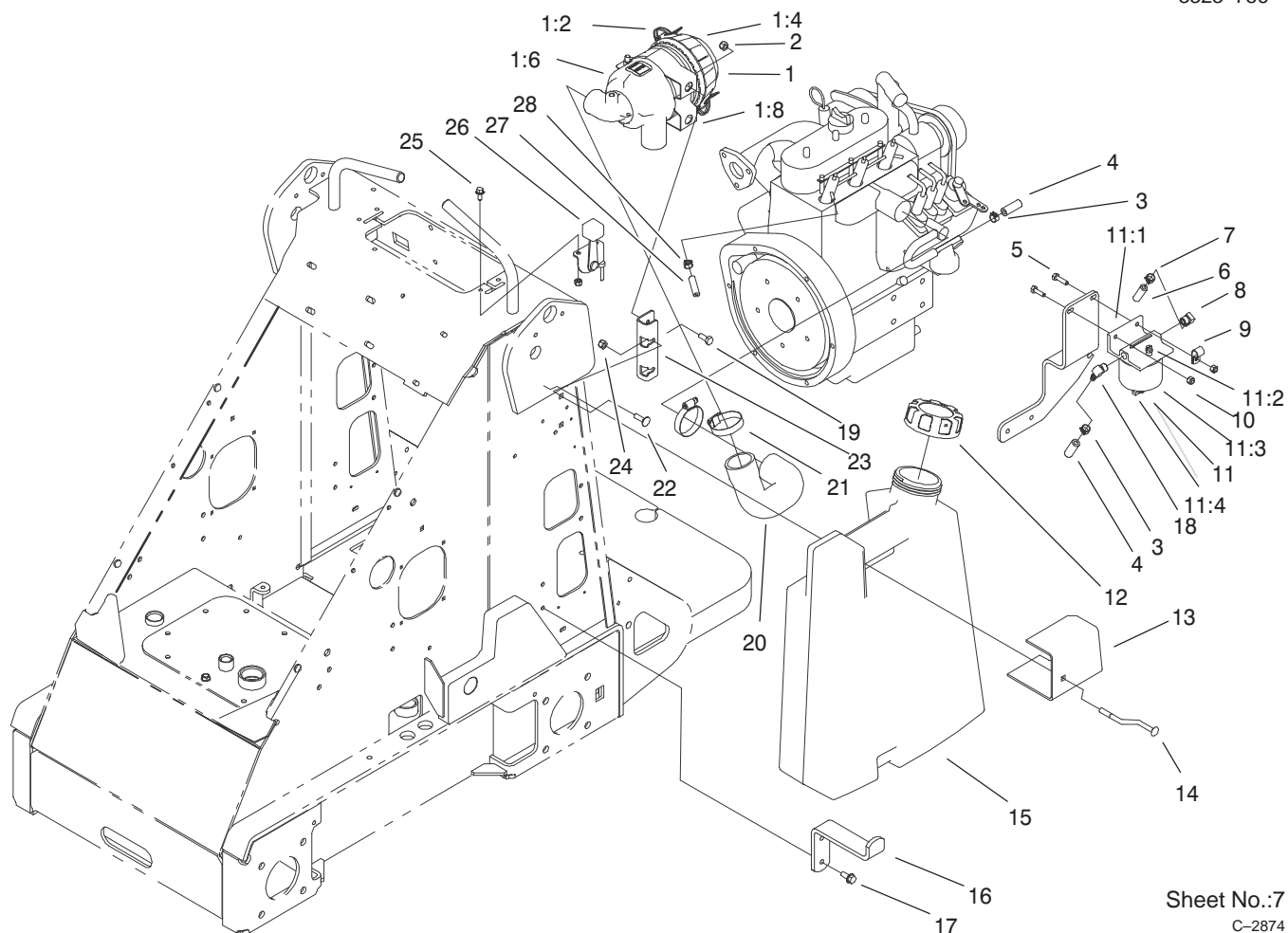


Sheet No.:6

Engine Assembly

Ref. No.	Part No.	Qty.	Description
1	100-2200	1	Engine-Kubota
2	56-2230	1	Hose-Gas
3	2412-36	2	Clamp-Hose
4	99-1445	1	Plug-Oil, Diesel
5	323-13	4	Screw-HH
6	3256-24	4	Washer-Flat
7	87-5100	4	Washer - Snubbing
8	98-4596	4	Washer-Mount, Engine
9	42-9600	6	Lockwasher-Spring, Mid
10	99-5130	8	Bolt
11	83-1030	2	Mount-Engine
12	93-5265	2	Mount-Engine
13	32128-29	4	Locknut-Flange
14	3296-29	12	Nut-Lock
15	32144-70	4	Screw-HH
16	3256-80	4	Washer-Flat
17	95-1726	4	Screw-Taptite w/Patch
18	99-1429-01	1	Bar-Support, Mount
19	99-1428-01	2	Bar-Brace, Mount
20	99-5007-01	1	Mount-Solenoid
21	99-5132	2	Bolt
22	3253-4	2	Washer-Lock/Sp
23	99-1426-01	2	Mount-Engine

Ref. No.	Part No.	Qty.	Description
24	2412-138	1	Clamp-R
25	99-3081-03	1	Support-Cover
26	99-3082-03	1	Support-Cover
27	322-5	8	Screw-HH
28	25-8640	1	Screw-Machine, HH
29	93-0021	1	Swivel-Cable, Throttle
30	3296-13	1	Nut-Lock Ni
31	3234-29	4	Screw-HHF

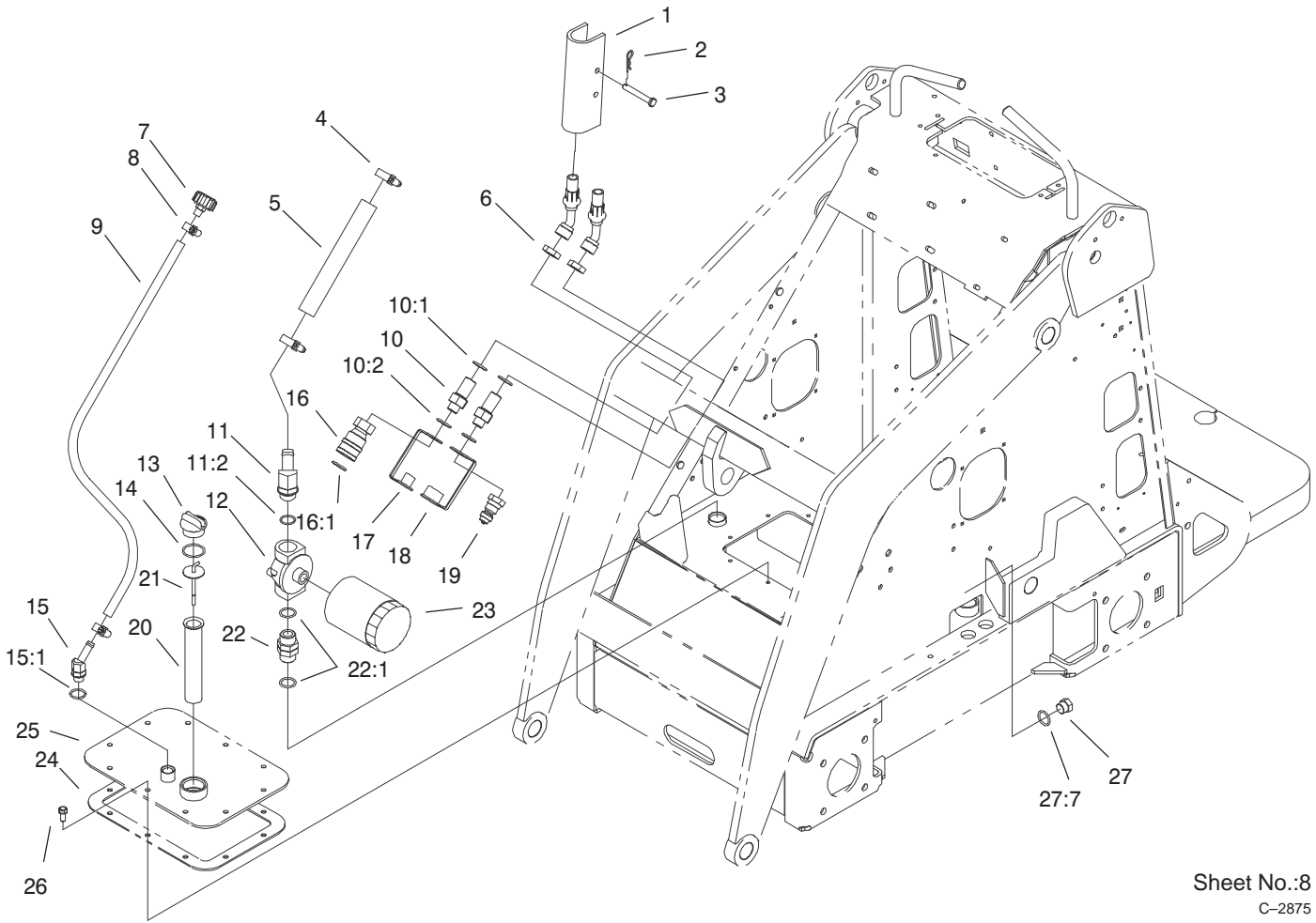
Sheet No.:7
C-2874

Fuel Tank and Air Filter Assembly

Ref. No.	Part No.	Qty.	Description
1	99-3160	1	Air Cleaner ASM
*1:1	99-3173	1	Element-Filter, Air
1:2	99-3174	2	Clip-Cleaner, Air
*1:3	99-3175	1	Valve-Ejector, Dust
1:4	99-3176	1	Cover-Cleaner, Air
*1:5	99-3183	1	Tube ASM
1:6	99-3184	1	Housing-Cleaner, Air
*1:7	99-3198	1	Filter-Safety
1:8	99-3197	1	Filter Mount Bracket ASM
2	3296-29	3	Nut-Lock
3	92-2379	2	Clamp-Hose
4	63-7627	1	Hose-Fuel
5	321-6	2	Screw-HH
6	99-1438	1	Hose-Fuel
7	2412-98	2	Clamp
8	304-96	1	Elbow
9	2412-73	1	Clamp-R
10	3296-42	4	Nut-Lock
11	63-7650	1	Separator-Filter/Water
11:1	63-8280	1	Head ASM
11:2	63-8290	1	Vent-Air
11:3	63-8300	1	Element-Spin-On
11:4	63-8310	1	Valve-Drain
12	98-2710	1	Diesel Fuel Cap ASM
13	99-1444-03	1	Plate-Mount, Left

Ref. No.	Part No.	Qty.	Description
14	98-4657	1	Bolt-Mount
15	99-1425	1	Fuel Tank ASM
*15:3	100-1596	1	Fitting-90°
*15:4	104048	1	Valve-Fuel
16	98-4656-03	1	Mount-Bottom, Tank
17	32144-70	2	Screw-HH
18	353-781	1	Fitting
19	322-3	2	Screw-HH
20	99-5041	1	Hose-Cleaner, Air
21	2412-92	2	Clamp-Hose
22	3230-2	2	Screw-CARR
23	99-3080-03	1	Mount-Cleaner, Air
24	32128-20	2	Nut-HF
25	3234-33	2	Screw-HHF
26	99-1422	1	Control-Throttle
27	76-4420	1	Hose-Line, Fuel
28	2412-146	2	Clamp-Hose

* Not illustrated

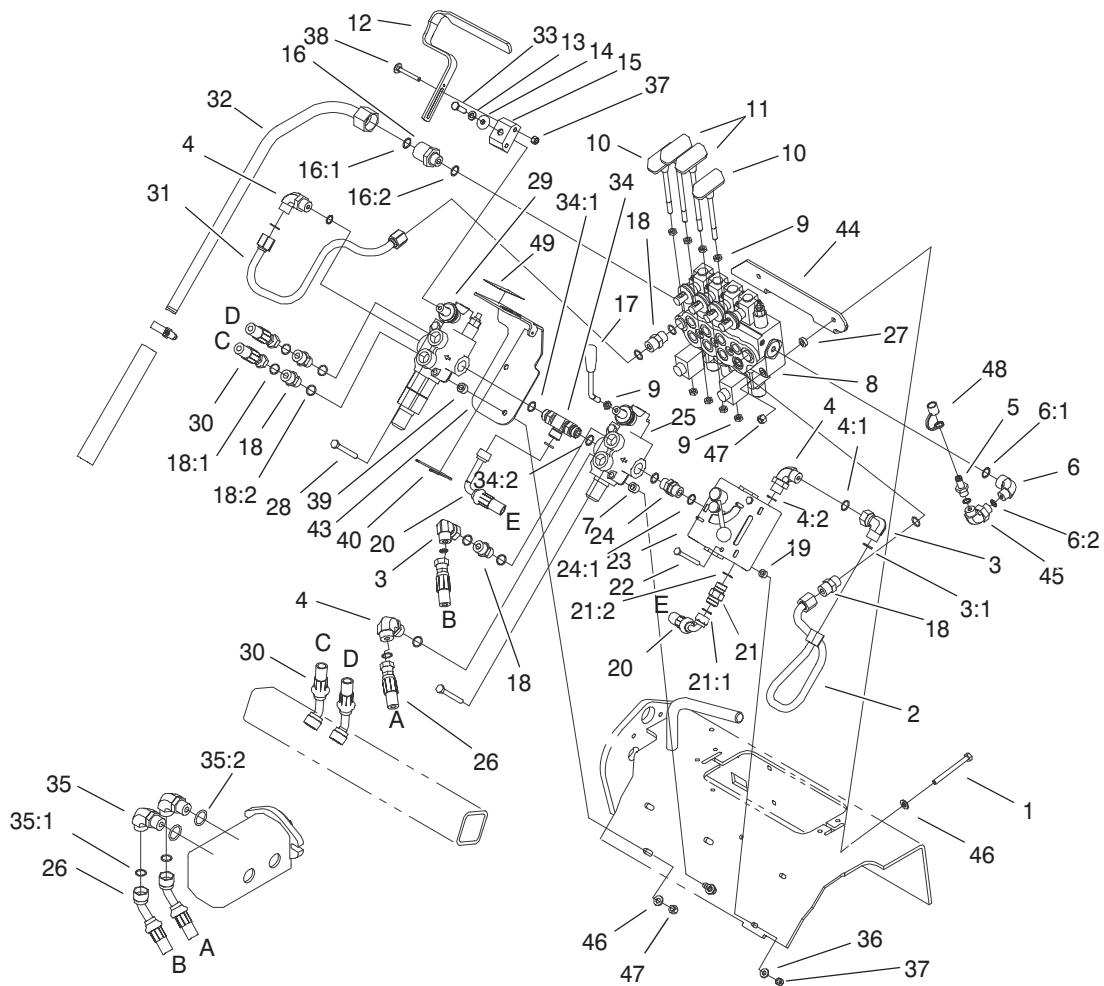


Sheet No.:8
C-2875

Hydraulic Tank Assembly

Ref. No.	Part No.	Qty.	Description
1	98-4675-01	2	Lock-Cylinder
2	3290-467	2	Pin-Cotter, Hair
3	283-52	2	Pin-Clevis
4	2412-129	2	Clamp-Hose
5	98-2713	1	Hose-Suction, Hyd
6	340-127	2	Nut-Bulkhead
7	68-6150	1	Breather-Air
8	2412-36	2	Clamp-Hose
9	100-1748	1	Hose-Vent
10	98-9907	2	Union-Bulkhead, Orb
10:1	237-30	1	O-Ring
10:2	237-79	1	O-Ring
11	99-3016	1	Fitting-45°
11:2	237-81	1	O-Ring
12	92-5821	1	Filter Head ASM
13	93-7498	1	Plug-Plastic
14	237-123	1	O-Ring
15	354-126	1	Fitting-Hydraulic, 45
15:1	237-79	1	O-Ring
16	98-4699	1	Female-Disconnect, Quick
16:1	100-4165	1	Seal
17	98-9913	1	Plug-Dust
18	98-9912	1	Cap-Dust
19	98-4698	1	Male-Disconnect, Quick

Ref. No.	Part No.	Qty.	Description
20	61-2790	1	Filter-Screen
21	99-1351	1	Dipstick
22	98-9906	1	Fitting-Thread, Straight
22:1	237-81	2	O-Ring
23	54-0110	1	Filter-Oil, Transmission
24	98-9927	1	Gasket-Cover
25	100-1713-01	1	Cover ASM
26	98-9940	10	Screw
27	353-988	1	Plug-Hex, Hollow
27:7	237-79	1	O-Ring

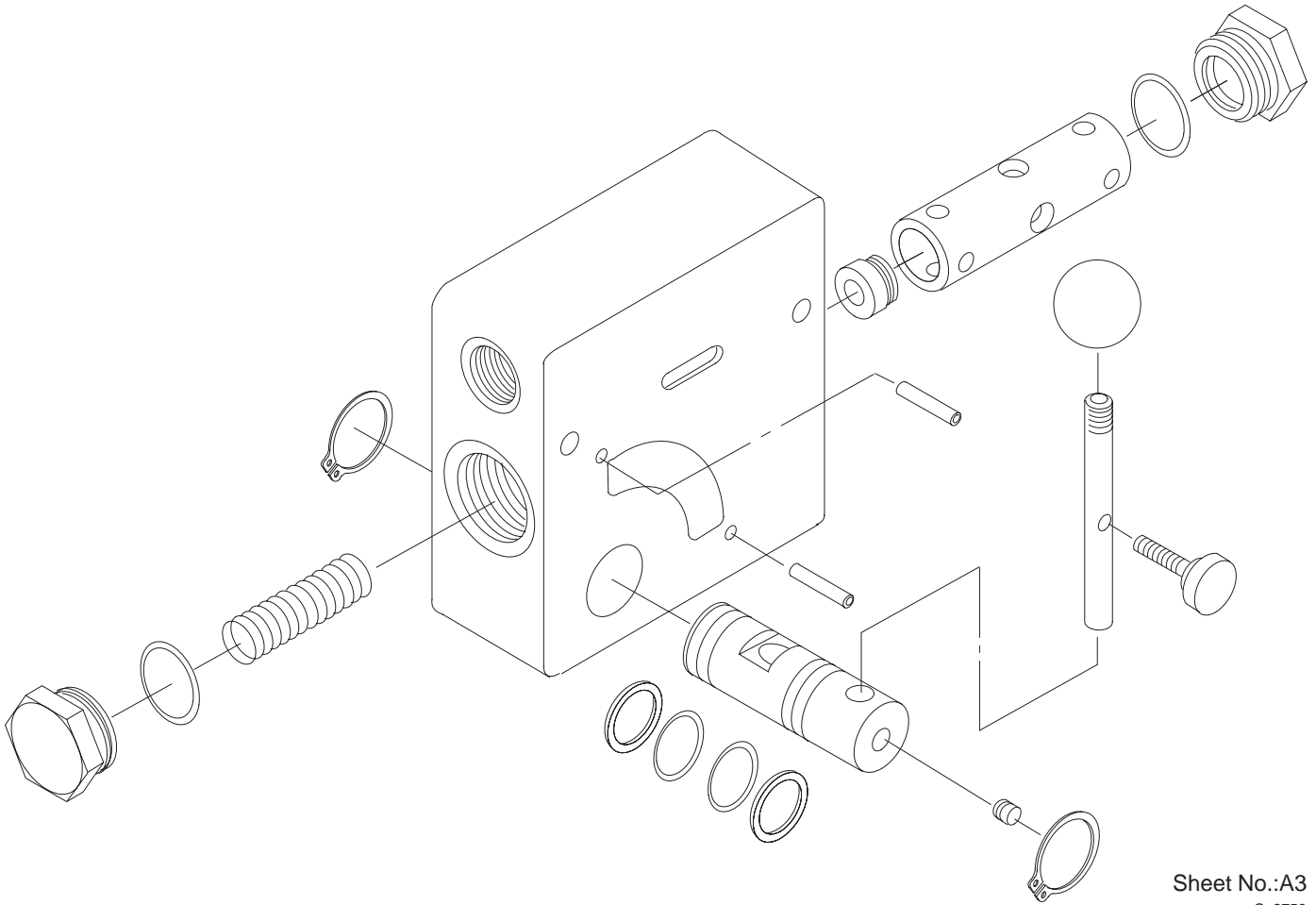


Sheet No.:9
C-2876

Hydraulic Valve Assembly

Ref. No.	Part No.	Qty.	Description
1	322-20	3	Screw-HH
2	99-3030	1	Line-Hyd, Cf
3	94-6031	2	Fitting-Hyd
3:1	237-30	1	O-Ring
4	340-98	3	Fitting-90°
4:1	237-30	1	O-Ring
4:2	237-79	1	O-Ring
5	86-5480	1	Nipple-Test
6	340-18	1	Fitting
6:1	237-79	1	O-Ring
6:2	237-22	1	O-Ring
7	98-4695	2	Tube-Spacer
8	99-3069	1	Valve-Hydraulic, 4-Spool
9	42-9580	9	Nut-Hex
10	98-4671	2	Cylinder Handle ASM
11	98-4670	2	Drive Handle ASM
12	100-2086	1	Grip-Control
13	3253-4	1	Washer-Lock/Sp
14	100-2088	1	Cap-Mount, Aux
15	100-2087	1	Mount-Lever, Aux.
16	98-9921	1	Fitting-Thread, Straight
16:1	237-145	1	O-Ring
16:2	237-79	1	O-Ring
17	98-4729	1	Lever-Valve
18	340-4	5	Adapter

Ref. No.	Part No.	Qty.	Description
18:1	237-30	3	O-Ring
18:2	237-79	3	O-Ring
19	98-4799	2	Tube-Spacer
20	100-2245	1	Hose ASM
21	98-4735	1	Valve-Check, Hyd
21:1	237-30	1	O-Ring
21:2	237-79	1	O-Ring
22	321-14	2	Screw-HH
23	99-3073	1	Valve-Flow, Hydraulic
24	95-3209	1	Fitting-Thread, Straight
24:1	237-79	2	O-Ring
25	99-3072	1	Valve-Select, Hyd
26	100-1730	2	Hose-Pump, Hyd
27	99-3078	2	Spacer
28	322-13	4	Screw-HH
29	99-3077	1	Valve-Aux, Hydraulic
30	98-4728	2	Hose-Aux, Hyd
31	98-4724	1	Line-Aux, Hydraulic
32	99-3021	1	Line-Tank, Hydraulic
33	33104-020	1	Screw-HHF
34	98-9079	1	Adapter - Tee, Adjustable
34:1	237-30	1	O-Ring
34:2	237-79	2	O-Ring
35	340-105	2	Fitting-Hyd., 90°
35:1	237-30	1	O-Ring



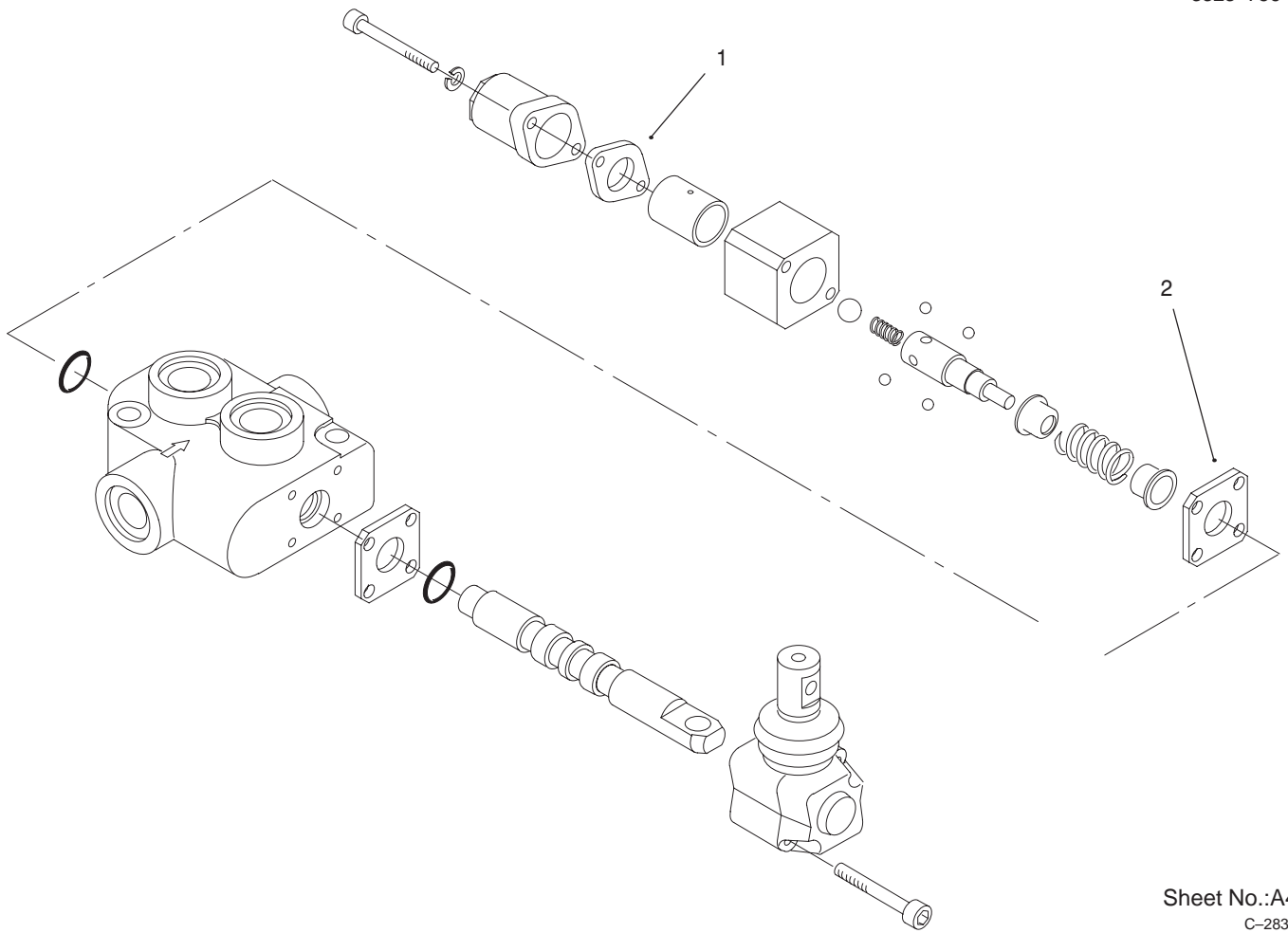
Sheet No.:A3
C-2759

Hydraulic Valve Assembly No. 99-3073

Ref. No.	Part No.	Qty.	Description
*1	98-9097	1	Seal Kit Handle Kit
*2	98-9098		

Ref. No.	Part No.	Qty.	Description

* Not Illustrated



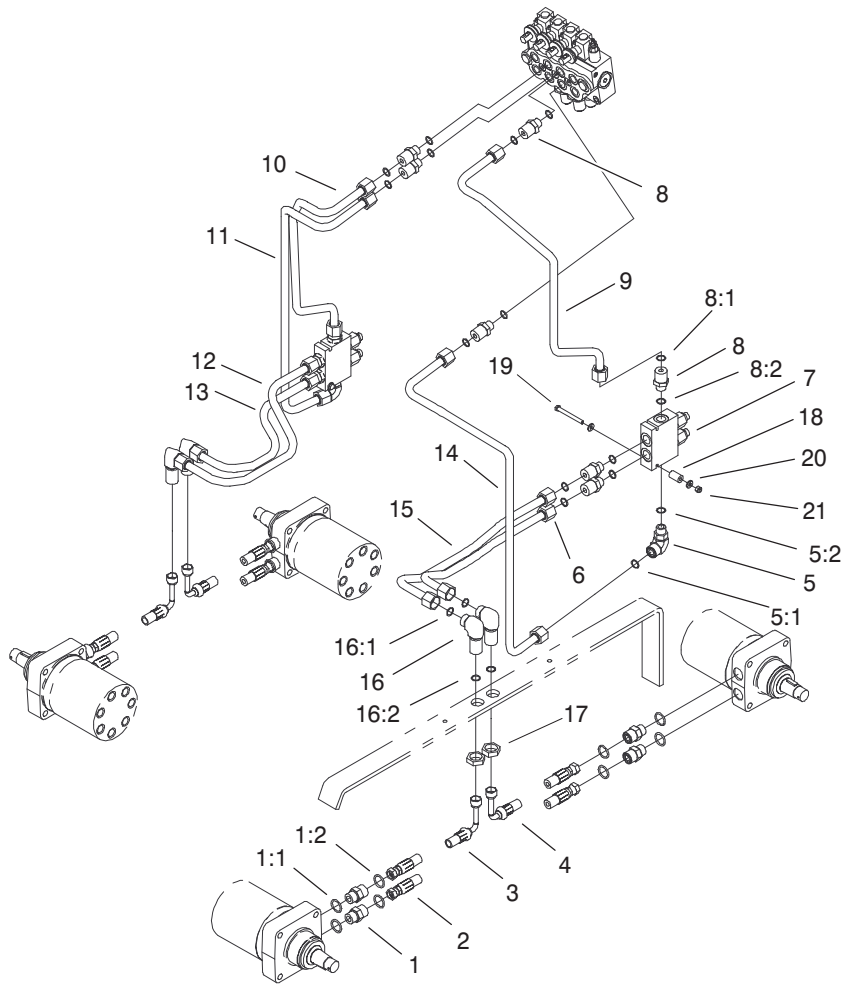
Sheet No.:A4
C-2835

Hydraulic Valve Assembly No. 99-3072

Ref. No.	Part No.	Qty.	Description
1	99-3074	1	Gasket
2	99-3075	1	Gasket
*3	99-4391	1	Kit-Seal, Sd4 (Incl. Ref. # 1, 2 & 4)
*4	99-3076	1	Tie-Strap

Ref. No.	Part No.	Qty.	Description

* Not Illustrated



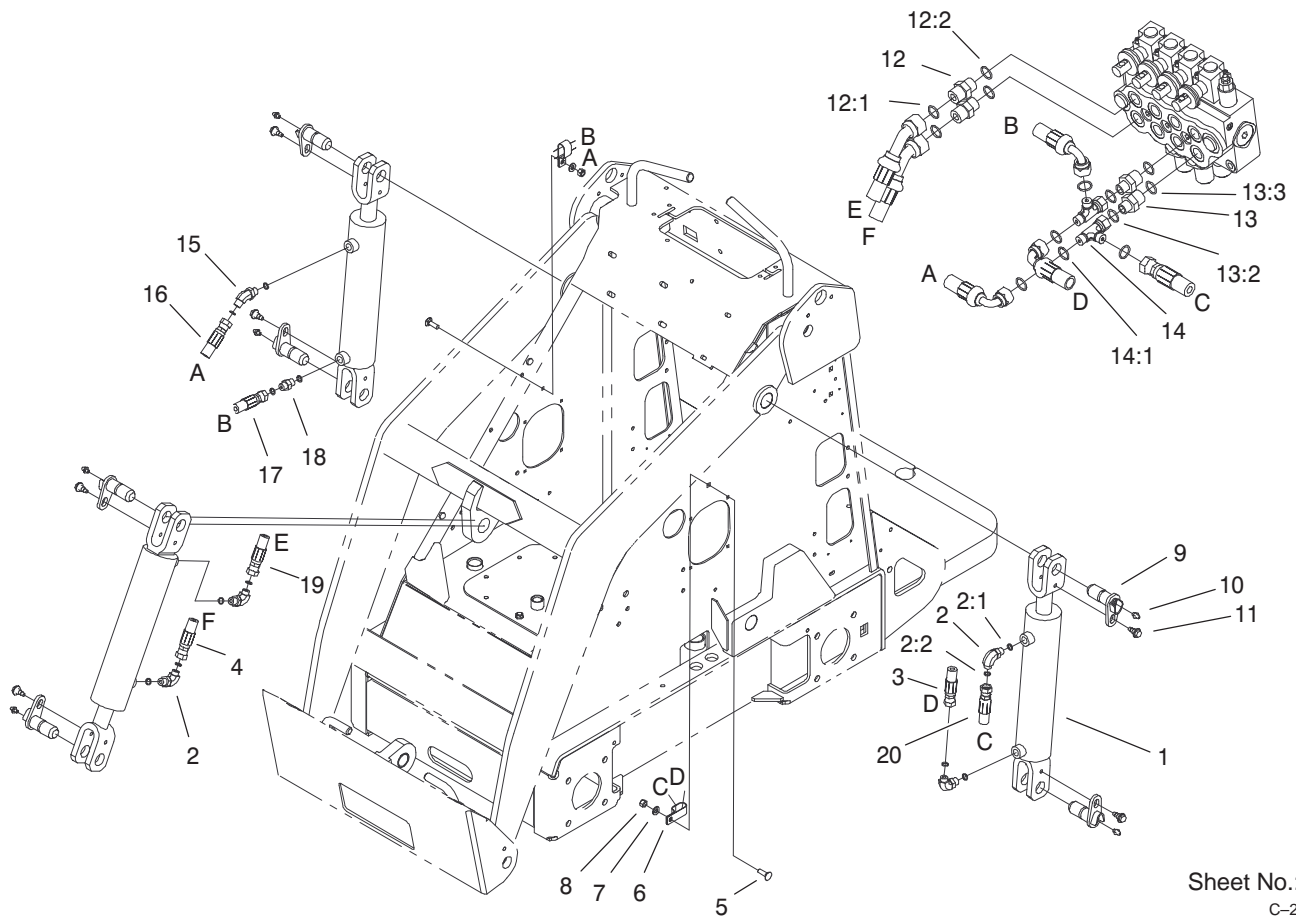
Sheet No.:10
C-2877

Hydraulic Motor Assembly

Ref. No.	Part No.	Qty.	Description
1	340-7	8	Adapter
1:1	237-65	1	O-Ring
1:2	237-80	1	O-Ring
2	99-3012	2	Hose-Motor, Hyd
3	99-3010	2	Hose-Motor, Front Hyd
4	99-3011	2	Hose-Motor, Rear Hyd
5	340-153	2	Fitting-Hyd
5:1	237-79	1	O-Ring
5:2	237-151	1	O-Ring
6	99-3022	1	Line-Hyd, Left A1
7	98-9050	2	Valve-Counterbalance
*7:1	98-2712	1	Kit-Seal, Valve
8	340-155	10	Fitting - Hyd
8:1	237-79	1	O-Ring
8:2	237-151	1	O-Ring
9	99-3027	1	Line-Hyd, Left B
10	99-3024	1	Line-Hyd, Right B
11	99-3029	1	Line-Hyd, Left A1
12	99-3025	1	Line-Hyd, Right B1
13	99-3028	1	Line-Hyd, Right A1
14	99-3023	1	Line-Hyd, Left A
15	99-3026	1	Line-Hyd, Left B1
16	340-72	4	Elbow-Bulkhead Union, 90°
16:1	237-65	2	O-Ring

Ref. No.	Part No.	Qty.	Description
17	340-74	4	Locknut-Bulkhead
18	99-3057	2	Spacer-Valve
19	321-23	2	Screw-HH
20	3256-22	4	Washer-Flat
21	3296-42	2	Nut-Lock

* Not illustrated

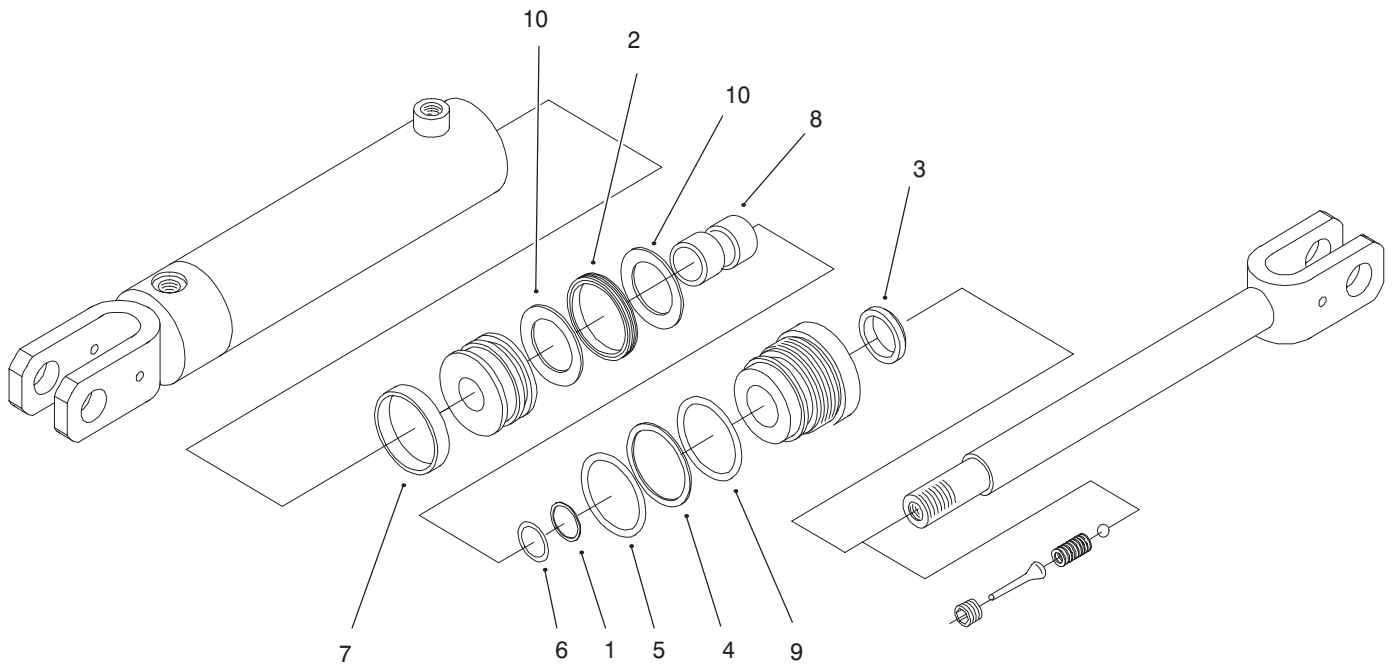


Sheet No.:11
C-2878

Hydraulic Cylinder Assembly

Ref. No.	Part No.	Qty.	Description
1	99-3051	3	Cylinder-Hydraulic
2	4	4	Adapter
2:1	237-42	2	O-Ring
2:2	237-35	2	O-Ring
3	98-4748	1	Hose-Hyd, Pressure Lo
4	98-4726	1	Hose-Hyd, Center Long
5	3230-2	2	Screw-CARR
6	2412-137	2	Clamp-Tube
7	3256-23	2	Washer-Flat
8	3296-29	2	Nut-Lock
9	99-1414	6	Pin-Pivot
10	302-5	6	Fitting-Lube
11	99-5105	6	Screw-Shoulder
12	340-3	2	Adapter
12:1	237-22	1	O-Ring
12:2	237-79	1	O-Ring
13	340-133	2	Adapter
13:2	237-78	1	O-Ring
13:3	237-35	1	O-Ring
14	340-151	2	Fitting
14:1	237-75	3	O-Ring
15	340-137	1	Fitting
16	98-4725	1	Hose-Loader, Hyd
17	100-1731	1	Hose-Hyd, Right

Ref. No.	Part No.	Qty.	Description
18	340-1	1	Adapter
19	98-4727	1	Hose-Hyd, Center Straight
20	99-3109	1	Hose-Loader, Hyd.



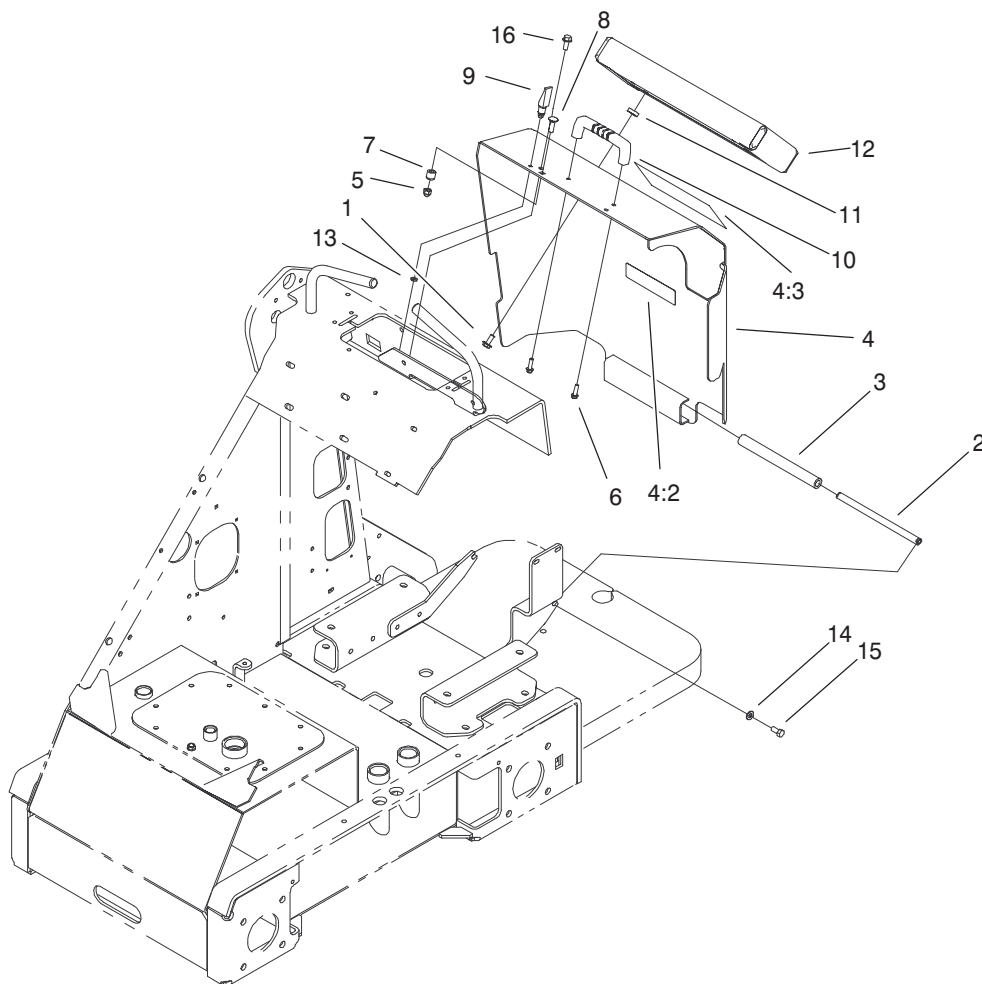
Sheet No.:A6
T-xxxx

Hydraulic Cylinder No. 99-3051

Ref. No.	Part No.	Qty.	Description
†1		1	Washer-Backup
†2		1	PSP Seal
†3		1	Rod-Wiper
†4		1	Washer-Backup
†5		1	O-Ring
†6		1	Polypak
†7		1	Wear Ring
†8		2	Wear Ring
†9		1	O-Ring
†10		2	Washer-Backup
*	99-3065	1	Seal Kit (Incl. Ref. #1-10)

Ref. No.	Part No.	Qty.	Description

* Not illustrated
† Not Serviced Separately

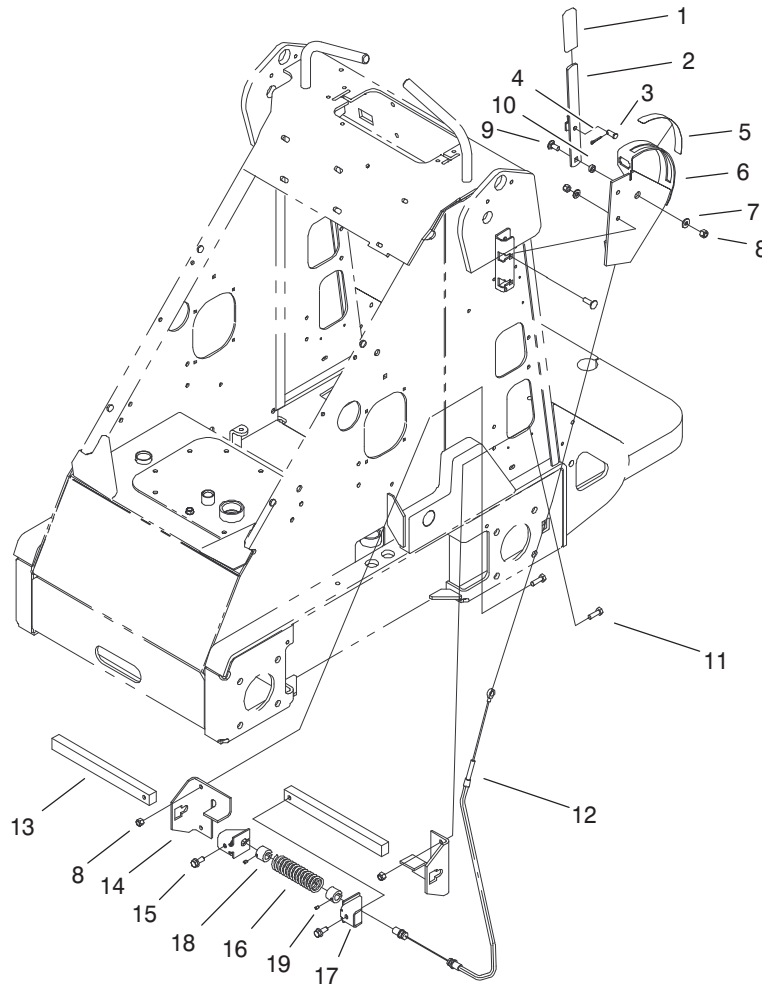


Sheet No.:12
C-2879

Rear Cover Assembly

Ref. No.	Part No.	Qty.	Description
1	3234-29	4	Screw-HHF
2	99-3083	1	Bar-Hinge
3	99-3085	1	Hose-Hinge
4	100-2191	1	Cover ASM
4:2	93-7814	1	Decal-Danger
4:3	100-1701	1	Decal-Danger
5	32111-8	1	Locknut-Acorn
6	46-8091	2	Special-HWH
7	99-3035	1	Spacer-Guide
8	3230-2	1	Screw-CARR
9	74-5950	2	Latch-Swell
10	65-5100	1	Handle-Door
11	26-4840	4	Spacer-Pin, Mtg
12	99-3101	1	Cover-Pad
13	99-3058	2	Washer
14	3256-23	2	Washer-Flat
15	322-3	2	Screw-HH
16	32144-70	1	Screw-HH

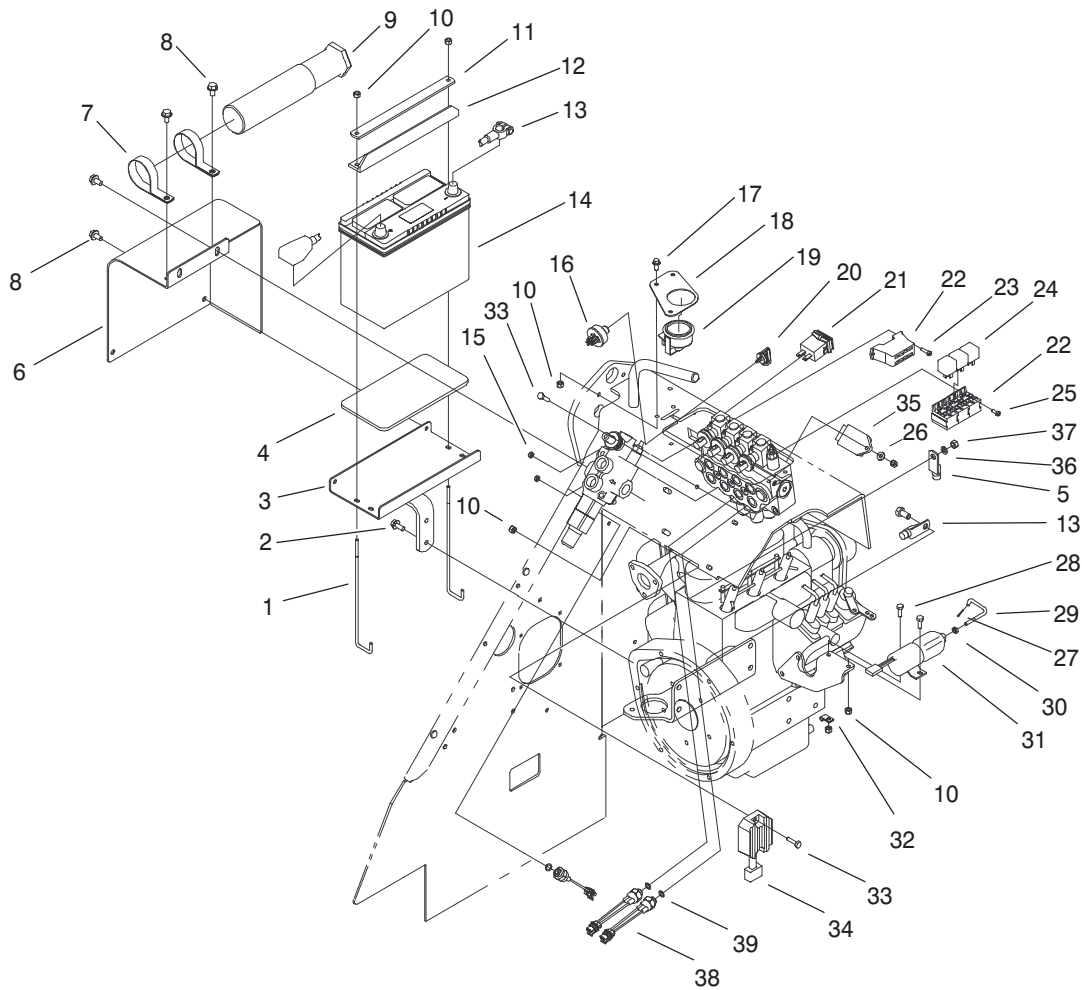
Ref. No.	Part No.	Qty.	Description



Sheet No.:13
C-2880

Parking Brake Assembly

Ref. No.	Part No.	Qty.	Description	Ref. No.	Part No.	Qty.	Description
1	62-9130	1	Grip-Handle				
2	100-1684-03	1	Lever				
3	283-62	1	Pin-Clevis				
4	3272-6	1	Pin-Cotter				
5	100-1692	1	Decal-Brake				
6	100-1688-03	1	Plate				
7	3256-23	1	Washer-Flat				
8	3296-29	5	Nut-Lock				
9	3230-23	1	Screw-CARR				
10	100-1683	1	Hub-Lever				
11	322-5	4	Screw-HH				
12	100-1679	1	Cable				
13	100-1674-03	2	Bar-Brake				
14	100-1676-03	2	Bracket-Brake				
15	100-1668	2	Screw-Flange				
16	100-1678-03	1	Spring				
17	100-1677-03	2	Bracket-Cable				
18	100-6274	2	Tube-Guide				
19	3245-20	2	Screw-HSH				

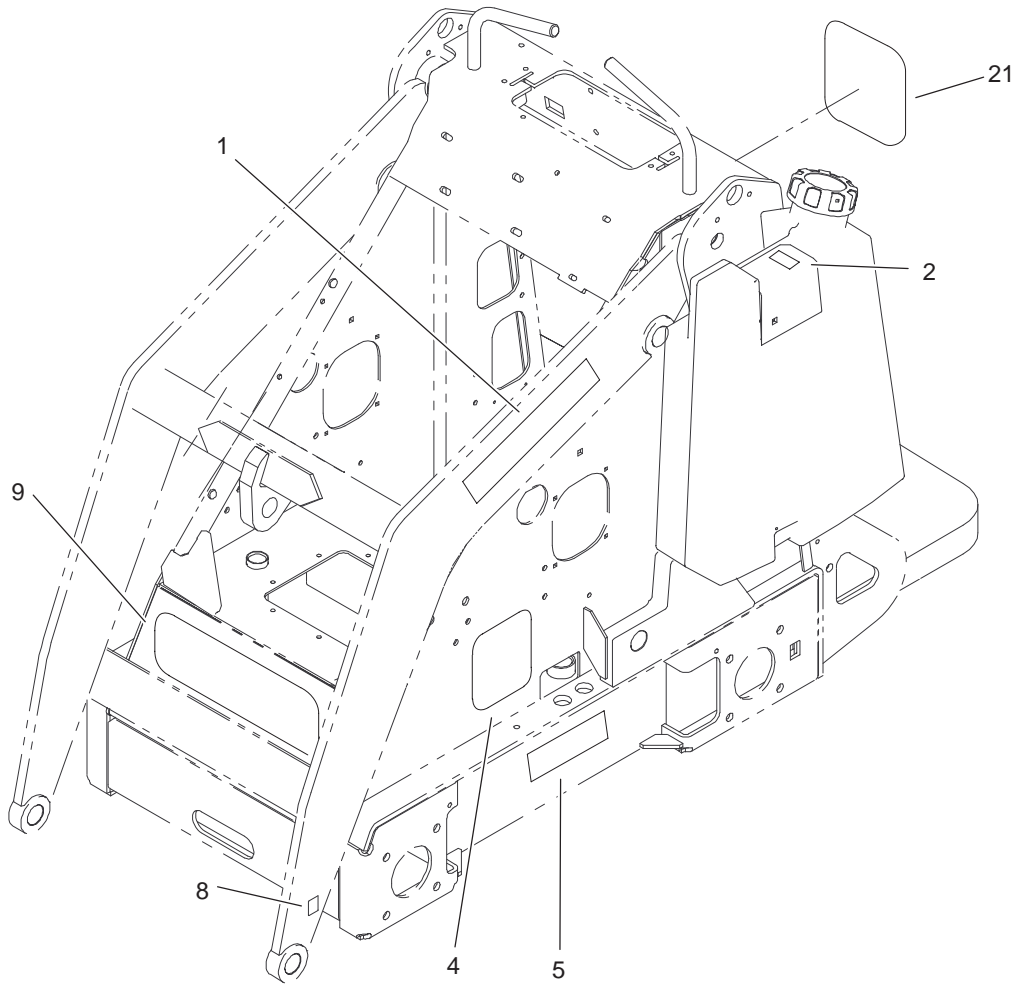


Sheet No.:14
C-2881

Electrical Components Assembly

Ref. No.	Part No.	Qty.	Description
1	99-5035	2	Retainer-Battery
2	32144-70	2	Screw-HH
3	99-5034-03	1	Mount-Battery
4	99-5030	1	Pad-Battery
5	100-1708	1	Cable-Battery, Positive
6	100-1721-03	1	Cover-Battery
7	2412-133	2	R-Clamp
8	32144-14	6	Screw-HWH
9	74-0720	1	Tube-Manual
10	3296-42	10	Nut-Lock Ni
11	99-5008-01	1	Retainer-Battery
12	99-5039	1	Retainer-Battery
13	100-1709	1	Cable-Battery, Negative
14	99-1441	1	Battery
15	3296-12	4	Nut-Lock
16	111216	1	Ignition Switch ASM
17	3234-33	3	Screw-HHF
18	100-1707-01	1	Mount-Lamp, Warning
19	100-1732	1	Cluster-Lamp
20	63-8360	2	Key-Ignition w/Shield
21	94-4208	1	Hourmeter
22	99-5134	1	Harness-Wire, Dingo Kubota
23	32105-13	2	Screw-Shh

Ref. No.	Part No.	Qty.	Description
24	98-7249	3	Relay-Spdt
25	32105-8	2	Screw
26	3256-22	1	Washer-Flat
27	3272-1	1	Pin-Cotter
28	321-4	2	Screw-HH
29	99-1423	1	Rod-Linkage, Threaded
30	3220-1	1	Nut-Jam
31	99-5006	1	Solenoid-Kubota
32	2412-31	1	Clamp-Boden
33	321-6	3	Screw-HH
34	100-2057	1	Regulator ASM
35	98-7611	1	Controller-Glow, F/W
36	100-2215	1	Washer-Spring
37	100-2171	1	Nut-Hexagon
38	72-4310	3	Switch
39	237-42	3	O-Ring



Sheet No.:15
C-2882

Decal Assembly

Ref. No.	Part No.	Qty.	Description
1	99-3167	2	Decal-Dingo 320d
2	93-6680	1	Decal - Diesel Only
4	100-4696	2	Decal-Side
5	99-3068	2	Decal-4-Paw
8	93-9084	6	Decal - Lift Point
9	98-4679	1	Decal - Front
21	98-4680	1	Decal - Side

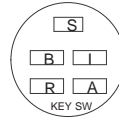
Ref. No.	Part No.	Qty.	Description

Electrical Schematic

KUBOTA DINGO SCHEMATIC

KEY SWITCH P/N 111216

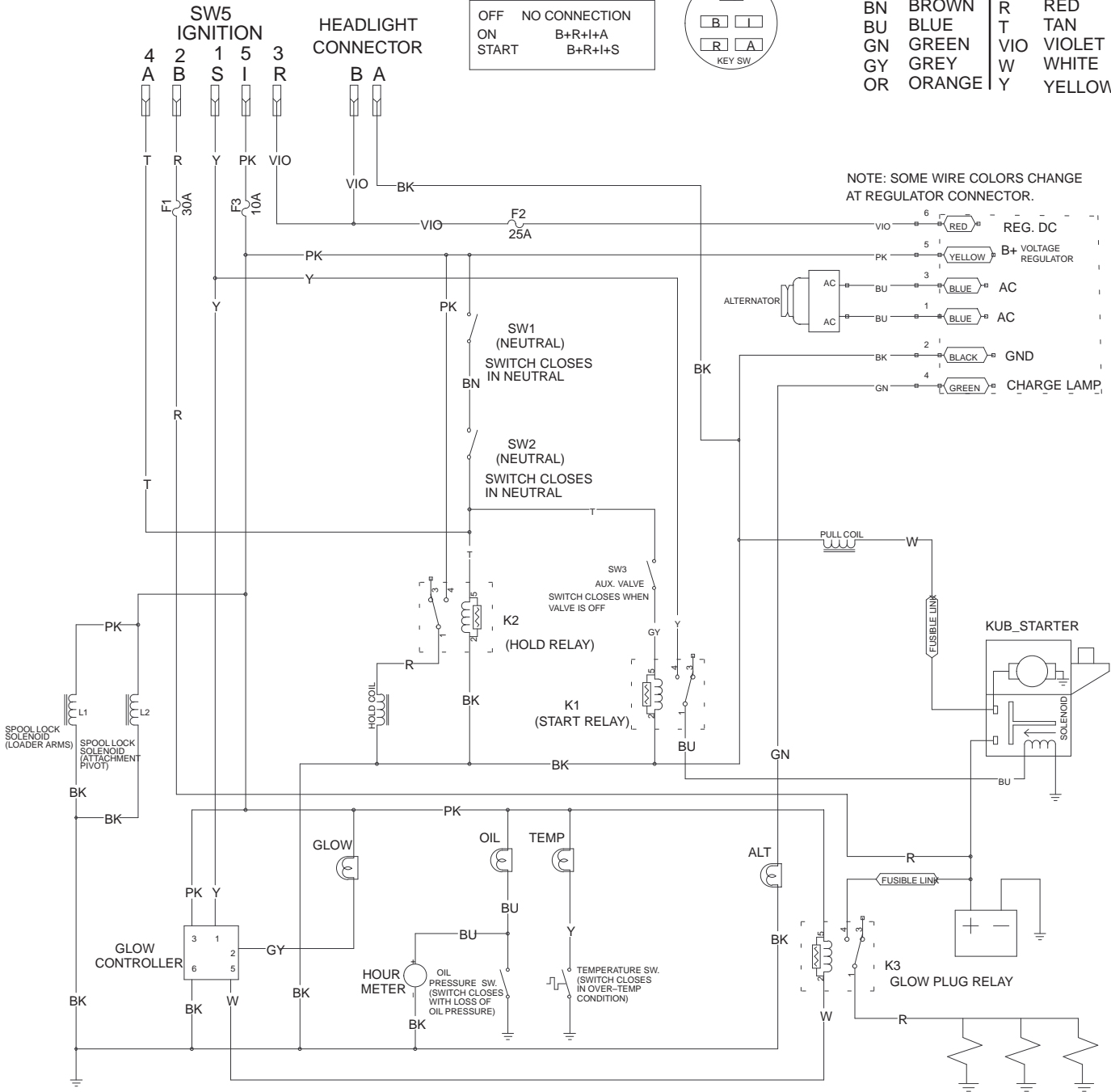
OFF	NO CONNECTION
ON	B+R+I+A
START	B+R+I+S



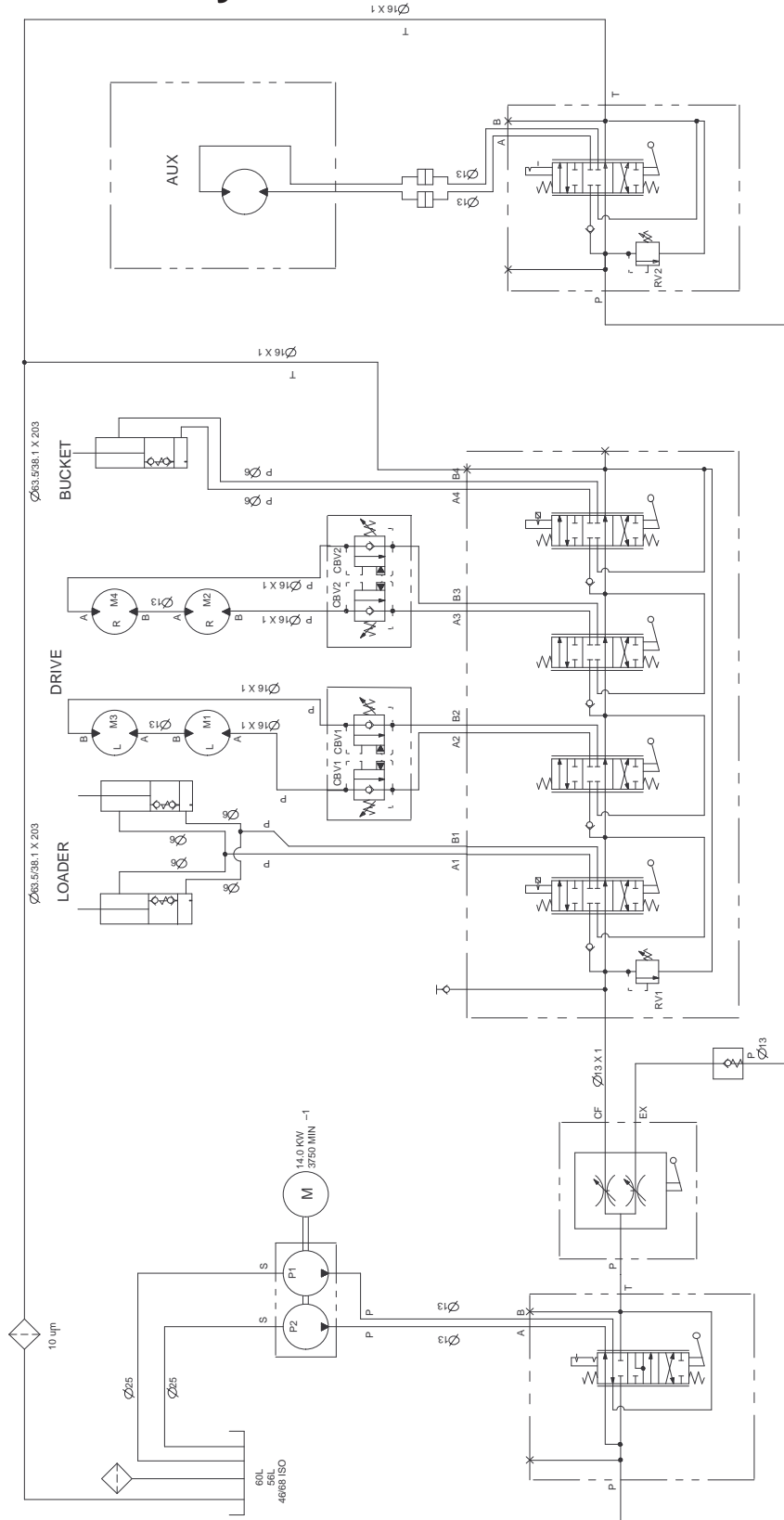
WIRE COLOR CODES

BK	BLACK	PK	PINK
BN	BROWN	R	RED
BU	BLUE	T	TAN
GN	GREEN	VIO	VIOLET
GY	GREY	W	WHITE
OR	ORANGE	Y	YELLOW

NOTE: SOME WIRE COLORS CHANGE AT REGULATOR CONNECTOR.

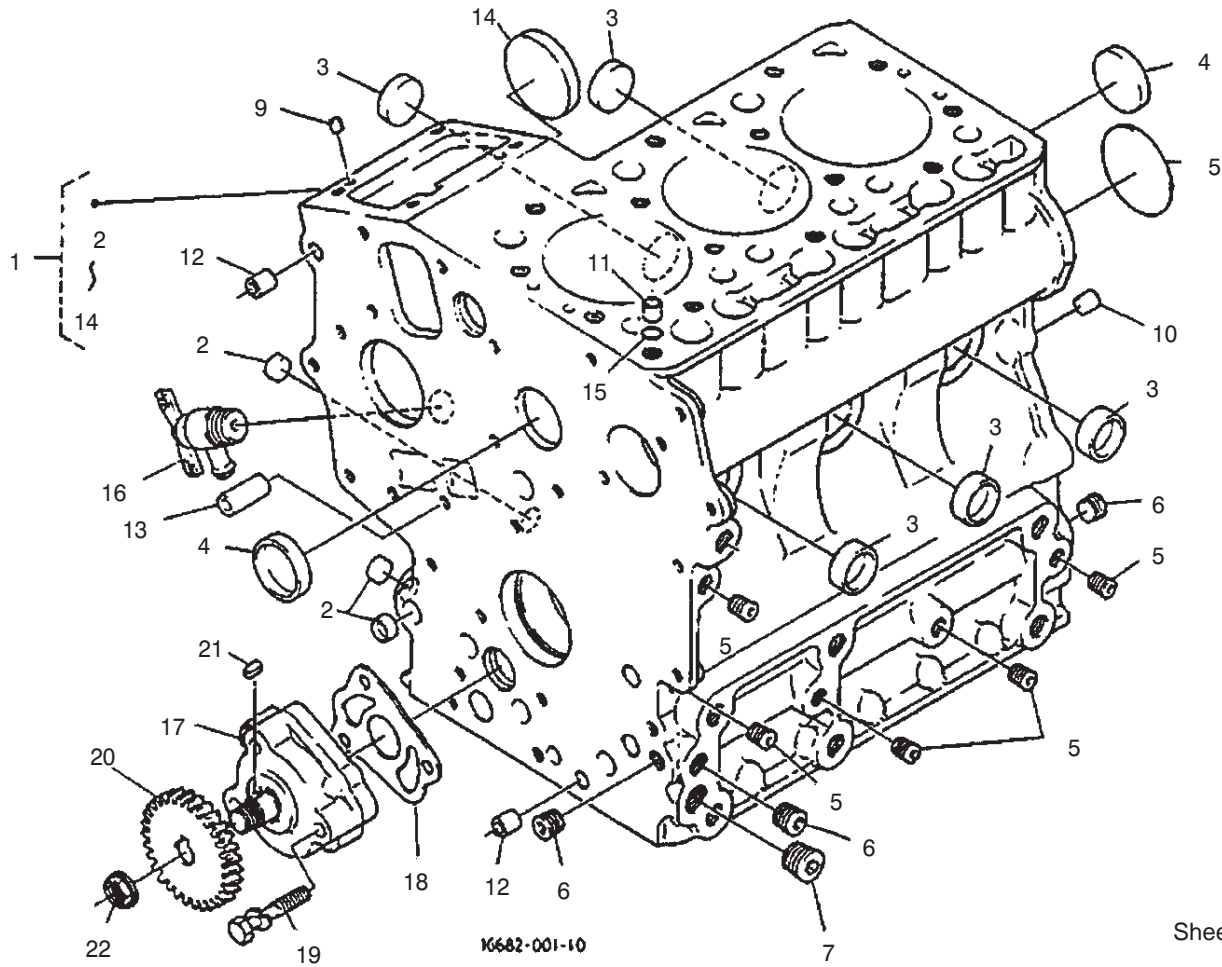


Hydraulic Schematic



DISPLACEMENT AND PRESSURE CHART						
COMPONENT	DISPLACEMENT		PRESSURE		FLOWRATE*	
	CU IN/REV	CU CM/REV	PSI	BARS	GPM	LPM
P1	0.55 CU IN	9 CC			8.5	32.1
P2	0.24 CU IN	4 CC			3.7	14.0
M1, M3	29.1 CU IN	476 CC				
M2, M4	29.1 CU IN	476 CC				
RV1			3000 PSI	207 BARS		
RV2			3000 PSI	207 BARS		
CBV1			1000 PSI	69 BARS		
CBV2			1000 PSI	69 BARS		

* FLOWRATE CALCULATED AT 3750 RPM AND 95% EFFICIENCY.



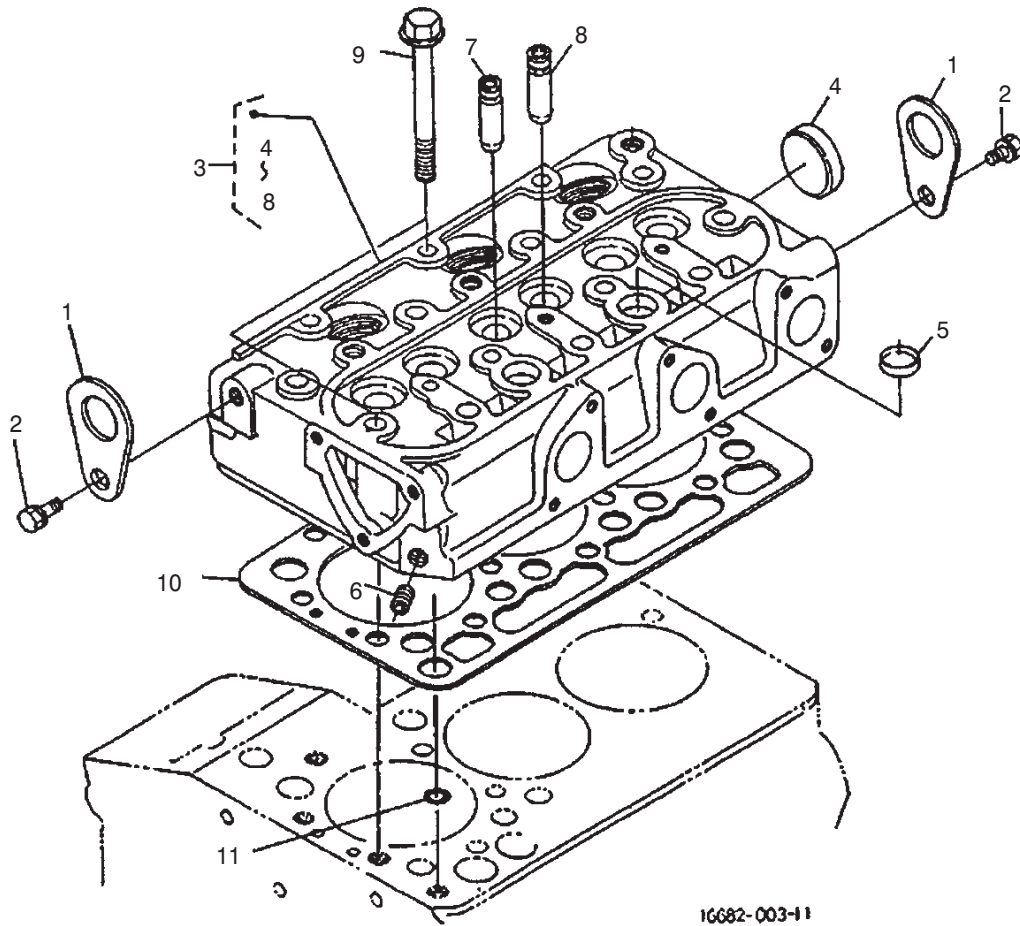
K6682-001-10

Sheet No.:2

Crankcase Assembly

Ref. No.	Part No.	Qty.	Description
1	100-2167	1	Crankcase-Comp.
2	100-2019	3	Cap-Sealing
3	100-2020	5	Cap-Sealing
4	98-9398	2	Cap-Sealing
5	98-7540	5	Cap-Sealing
6	98-7487	3	Plug
7	98-7488	1	Plug
8	100-1851	1	Plug
9	98-9375	2	Pin-Straight
10	98-9377	2	Pin-Straight
11	98-7506	1	Pin-Pipe
12	98-9387	2	Pin-Pipe
13	100-2051	2	Pin-Pipe
14	100-1991	1	Cover-Fuel, Camshaft
15	98-7509	1	O-Ring
16	98-9436	1	Drain Cock ASM
17	100-2002	1	Oil Pump ASM
18	100-2003	1	Gasket-Pump, Oil
19	100-1923	3	Bolt
20	100-1893	1	Gear-Drive, Oil Pump
21	98-7658	1	Key-Feather
22	100-1779	1	Nut-Flange

Ref. No.	Part No.	Qty.	Description



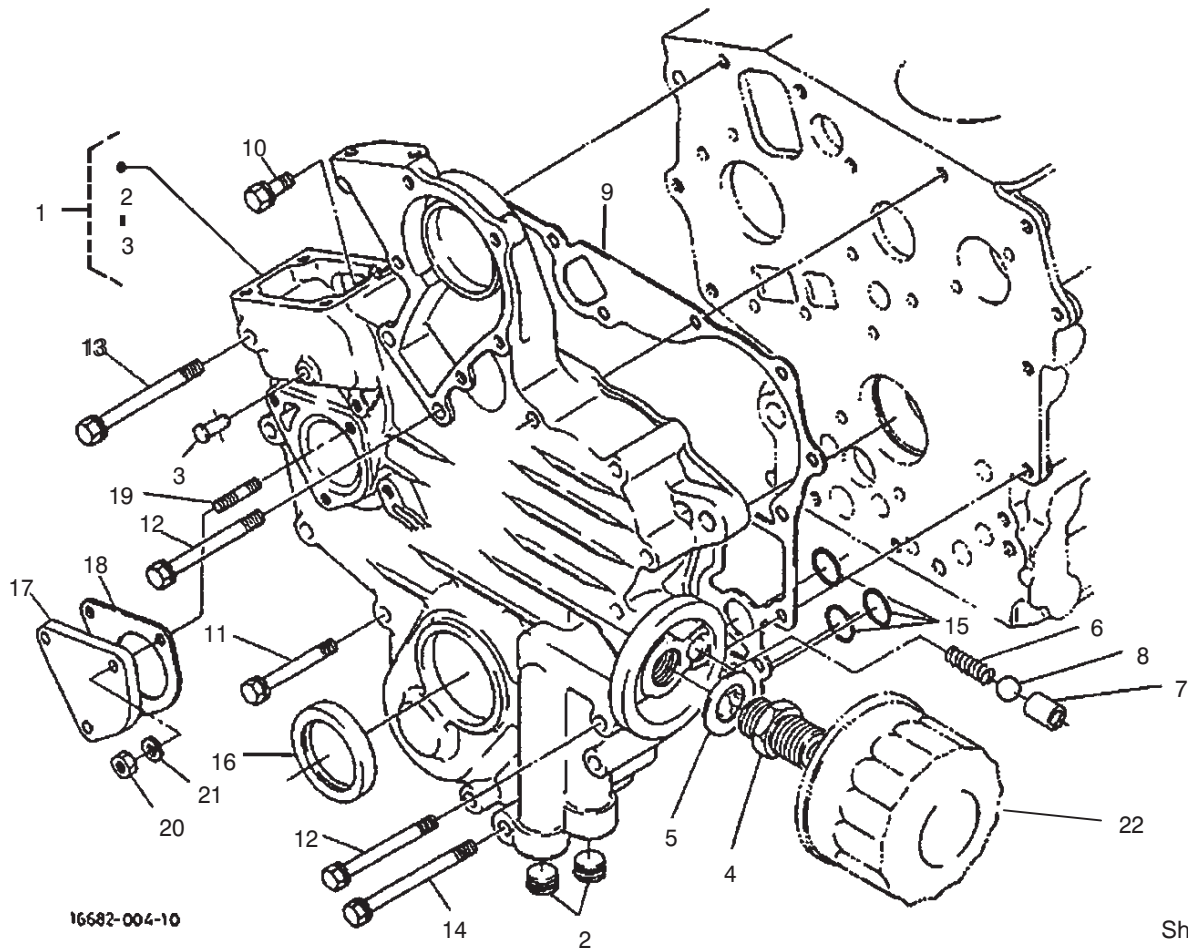
16682-003-11

Sheet No.:4

Cylinder Head Assembly

Ref. No.	Part No.	Qty.	Description
1	98-7531	2	Engine-Hook
2	98-7526	2	Bolt
3	100-2246	1	Head-Cylinder, Comp.
4	98-9395	1	Cap-Sealing
5	98-9389	2	Cap-Sealing
6	98-7540	1	Cap-Sealing
7	100-1882	3	Guide-Valve, Inlet
8	100-1883	3	Guide-Valve, Exhaust
9	100-1820	14	Bolt-Head, Cylinder
10	100-2043	1	Gasket-Head, Cylinder
11	98-7509	1	O-Ring

Ref. No.	Part No.	Qty.	Description

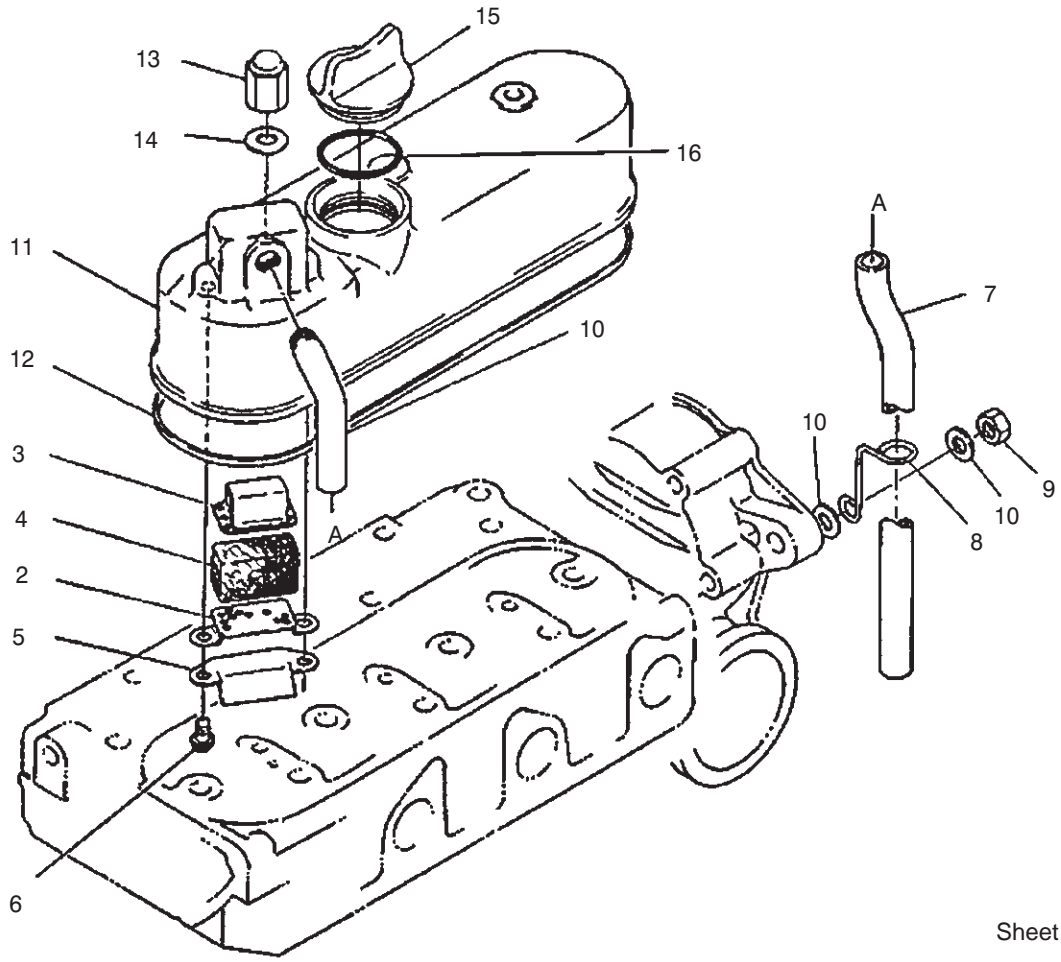


16682-004-10

Sheet No.:5

Gear Case Assembly

Ref. No.	Part No.	Qty.	Description	Ref. No.	Part No.	Qty.	Description
1	100-2048	1	Case-Gear, Comp.				
2	98-7546	2	Plug				
3	100-1910	1	Pin-Spring, Start				
4	98-9388	1	Pipe-Joint				
5	100-1926	1	Washer-Plain				
6	100-2004	1	Spring				
7	100-1894	1	Seat-Valve				
8	100-1792	1	Ball				
9	100-1954	1	Gasket-Gearcase				
10	98-7605	1	Bolt				
11	100-2201	8	Bolt				
12	100-1922	5	Bolt				
13	100-1766	1	Bolt				
14	100-1767	1	Bolt				
15	100-2206	3	O-Ring				
16	100-1971	1	Seat-Oil				
17	100-2060	1	Cover				
18	100-2061	1	Gasket-Gearcase, H/M				
19	98-7571	3	Stud				
20	98-7572	3	Nut				
21	98-9367	3	Washer-Spring				
22	100-1892	1	Cartridge-Filter, Oil				



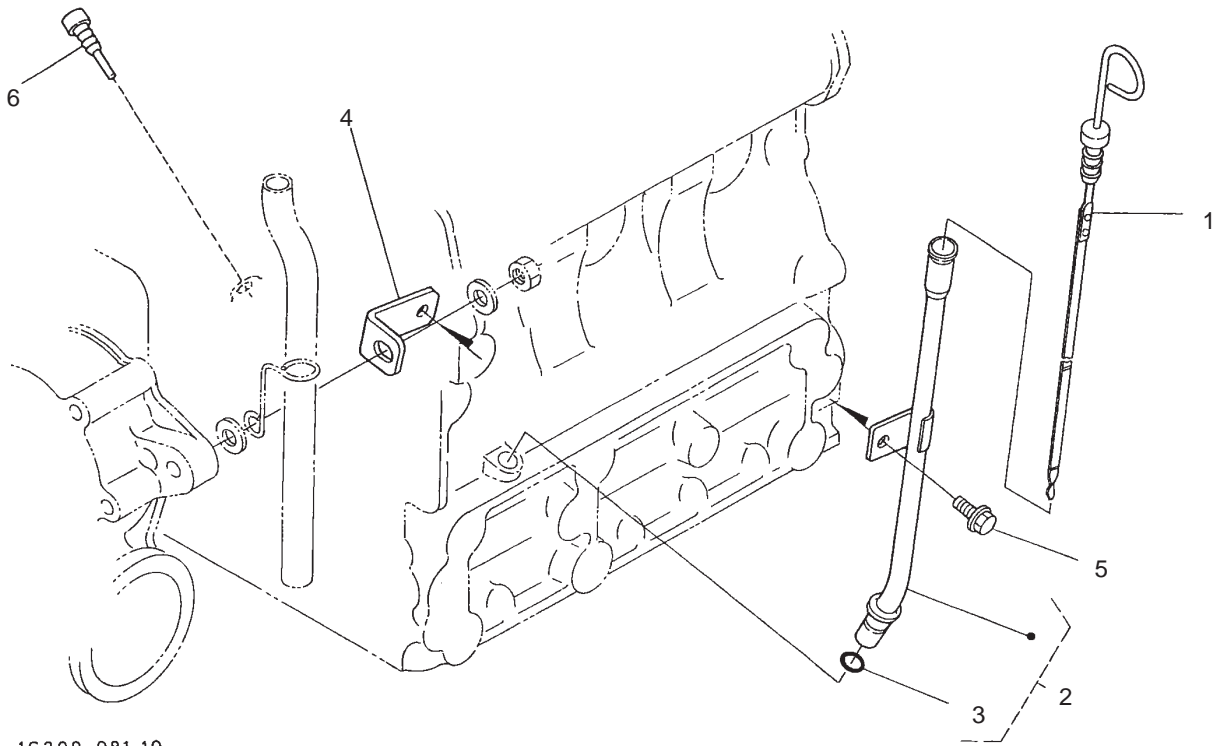
16871-009-10

Sheet No.:6

Head Cover Assembly

Ref. No.	Part No.	Qty.	Description
1	100-1972	1	Joint-Pipe, Breather
2	100-1877	1	Plate-Element
3	100-1878	1	Plate-Element
4	100-1881	1	Element-Breather
5	100-1879	1	Breather-Shield, Oil
6	100-2040	2	Screw
7	100-1880	1	Pipe-Breather
8	100-1973	1	Clamp-Pipe
9	98-7739	1	Nut
10	98-7660	2	Washer-Plain
11	100-2029	1	Cover-Head, Cylinder
12	100-2030	1	Gasket-Cover, Head
13	98-7655	3	Nut-Cap
14	98-7654	3	Gasket
15	98-9449	1	Plug-Filler, Oil
16	99-3446	1	O-Ring

Ref. No.	Part No.	Qty.	Description



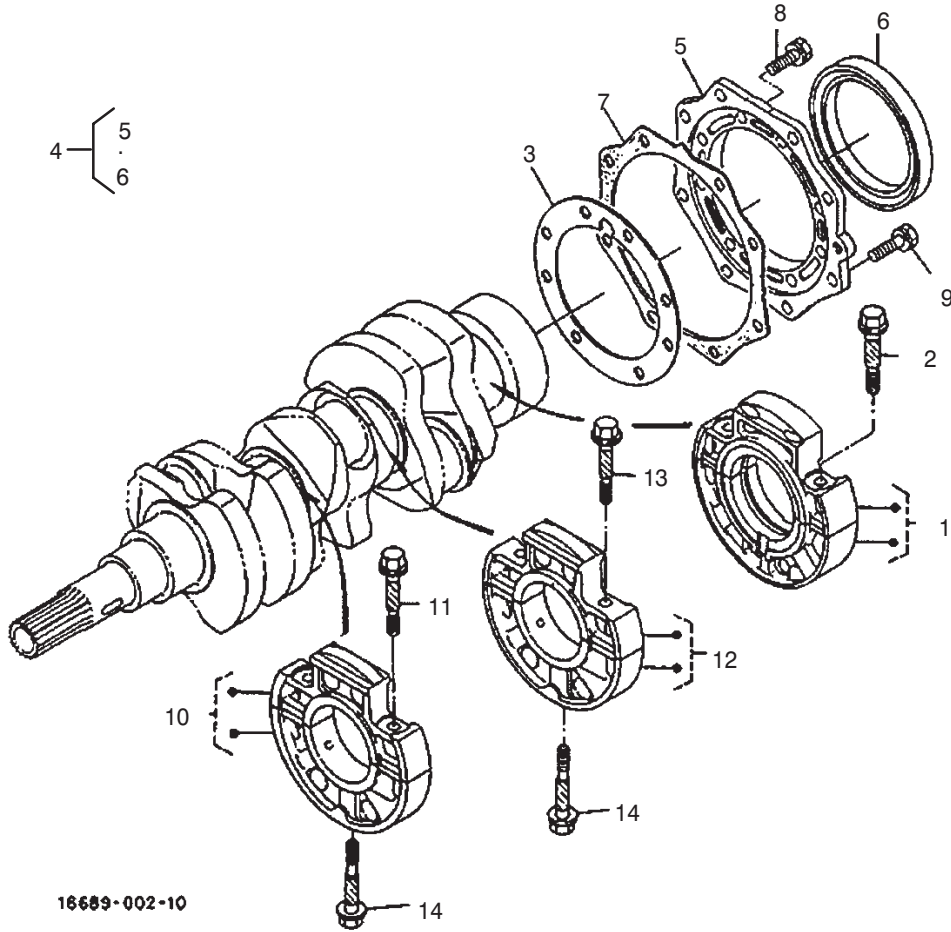
1G299-081-10

Sheet No.:7

Dipstick and Guide Assembly

Ref. No.	Part No.	Qty.	Description
1	100-2247	1	Gauge-Oil
2	100-2241	1	Oil Gauge Guide ASM
3	98-9374	1	O-Ring
4	100-2248	1	Support-Guide, Gauge
5	100-1774	1	Bolt-Flange
6	100-2229	1	Plug-Rubber

Ref. No.	Part No.	Qty.	Description



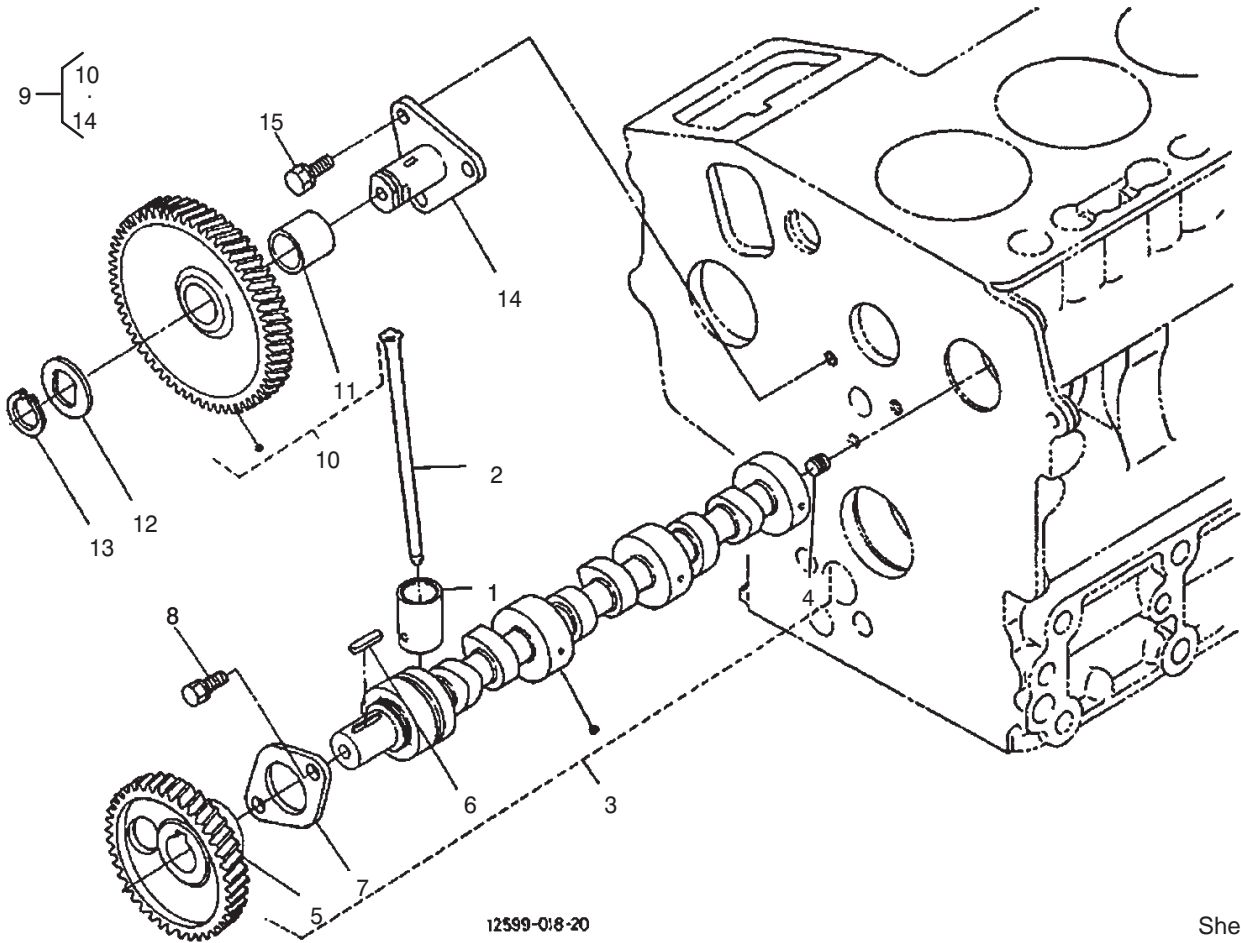
16689-002-10

Sheet No.:8

Main Bearing Case Assembly

Ref. No.	Part No.	Qty.	Description
1	100-1988	1	Main Bearing Case ASM
2	100-1757	2	Bolt-Case, Bearing
3	100-1929	1	Gasket-Case, Bearing
4	100-2233	1	Bearing Case Cover ASM
5	100-1875	1	Cover-Case, Bearing
6	100-2055	1	Seal-Oil
7	100-1876	1	Gasket-Case, Bearing
8	98-7568	8	Bolt
9	100-1750	8	Bolt
10	100-1987	1	Main Bearing Case ASM
11	100-1757	2	Bolt-Case, Bearing
12	100-2027	1	Main Bearing Case ASM
13	100-1757	2	Bolt-Case, Bearing
14	100-1874	2	Bolt-Case, Bearing

Ref. No.	Part No.	Qty.	Description

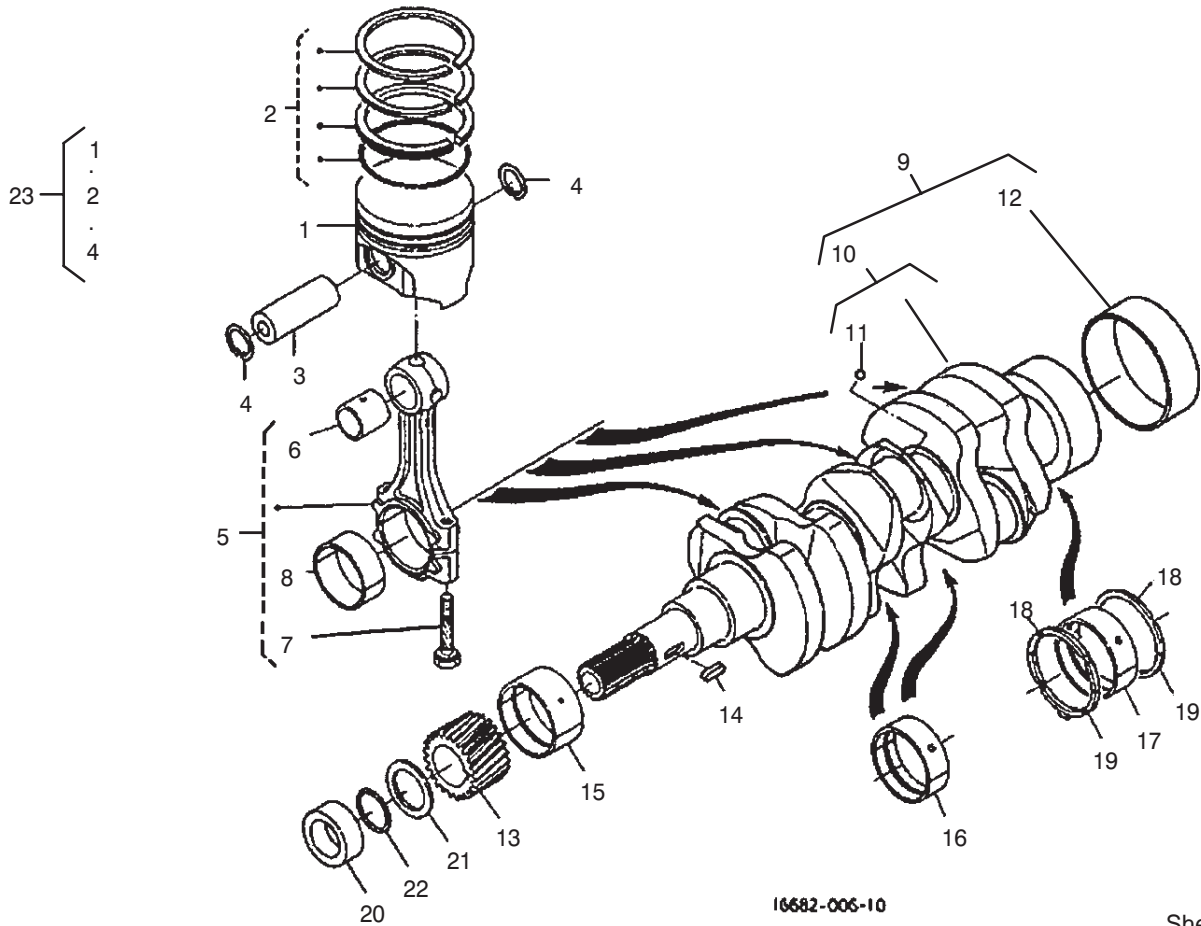


Sheet No.:9

Camshaft Assembly

Ref. No.	Part No.	Qty.	Description
1	100-1990	6	Tappet
2	100-1989	6	Rod-Push
3	100-2162	1	Camshaft ASM
4	98-7449	1	Screw-Set
5	100-2163	1	Gear-Camshaft
6	98-9378	1	Key-Feather
7	100-1887	1	Stopper-Camshaft
8	98-9350	2	Bolt
9	100-2240	1	Idle Gear ASM
10	100-1966	1	Gear-Idle, Comp.
11	100-1968	1	Bush
12	100-1970	1	Collar-Gear, Idle
13	100-1969	1	Ring-Snap
14	100-1967	1	Shaft-Gear, Idle
15	98-9351	3	Bolt

Ref. No.	Part No.	Qty.	Description



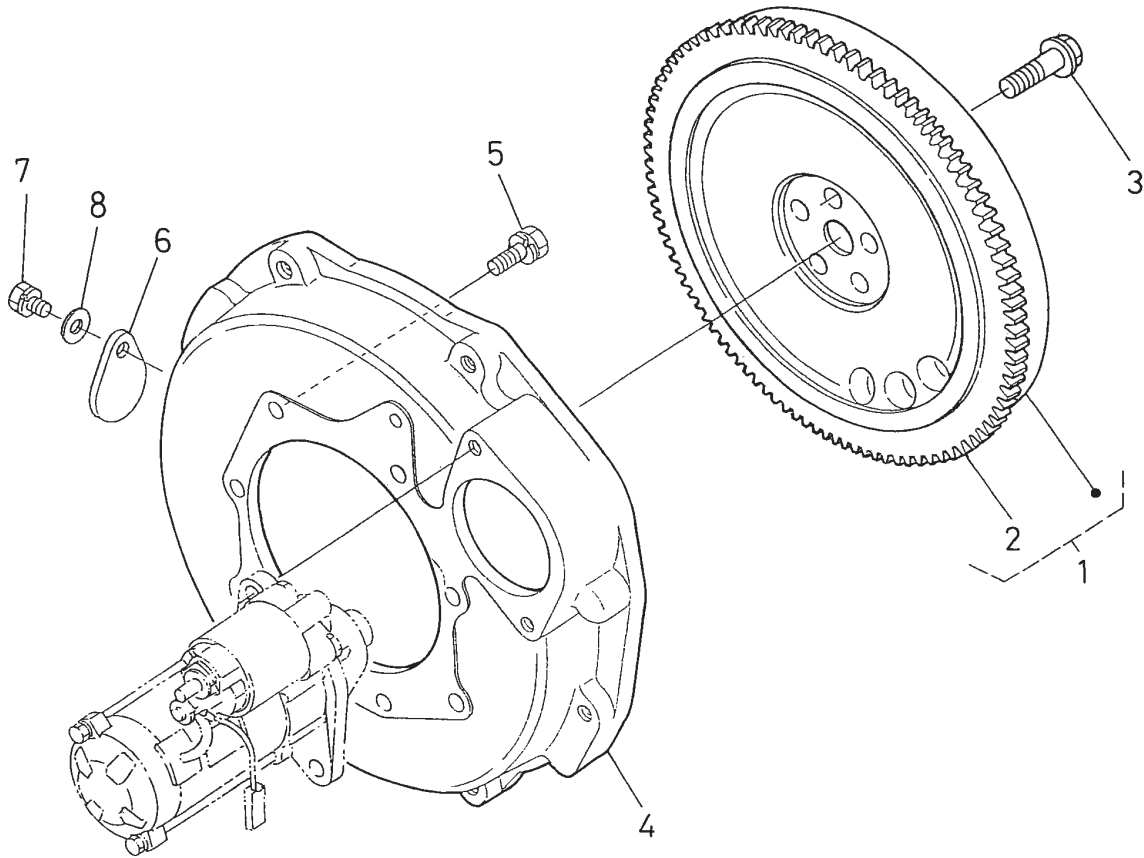
16682-006-10

Sheet No.:10

Piston and Crankshaft Assembly

Ref. No.	Part No.	Qty.	Description
1	100-1994	3	Piston (STD.)
1	100-1996	3	Piston (+0.25 Mm)
2	100-2158	3	Piston Ring ASM
2	100-2159	3	Piston Ring ASM
3	100-1995	3	Pin-Piston
4	100-1835	6	Cir-Cup, Piston Pin
5	100-1998	3	Connecting Rod ASM
6	100-1997	3	Bush-Pin, Piston
7	100-1999	6	Bolt-Rod, Connecting
8	100-1942	3	Crankpin-Metal (-0.2 Mm)
8	100-1943	3	Crankpin-Metal (-0.4 Mm)
8	100-2000	3	Crankpin-Metal (STD.)
9	100-2161	1	Crankshaft ASM
10	100-2160	1	Crankshaft-Comp.
11	100-1791	3	Ball
12	100-2054	1	Sleeve-Crankshaft
13	100-1891	1	Gear-Crankshaft
14	100-1752	1	Key-Feather
15	100-1944	1	Crankshaft-Metal (STD.)
15	100-1947	1	Crankshaft-Metal (-0.2 Mm)
15	100-1948	1	Crankshaft-Metal (-0.4 Mm)

Ref. No.	Part No.	Qty.	Description
16	100-1945	2	Crankshaft-Metal (-0.2 Mm Set)
16	100-1946	2	Crankshaft-Metal (-0.4 Mm Set)
16	100-2033	2	Crankshaft-Metal (STD. Set)
17	100-1870	2	Crankshaft-Metal (-0.2 Mm)
17	100-1871	2	Crankshaft-Metal (-0.4 Mm)
17	100-2032	2	Crankshaft-Metal (STD.)
18	100-1836	2	Metal-Side (STD.)
18	100-1838	2	Metal-Side (+0.2 Mm)
18	100-1839	2	Metal-Side (+0.4 Mm)
19	100-1837	2	Metal-Side (STD.)
19	100-1840	2	Metal-Side (+2.0 Mm)
19	100-1841	2	Metal-Side (+4.0 Mm)
20	100-1890	1	Collar-Crankshaft
21	100-1974	1	Slinger-Oil
22	100-2209	1	O-Ring
23	100-2164	1	Kit-Piston



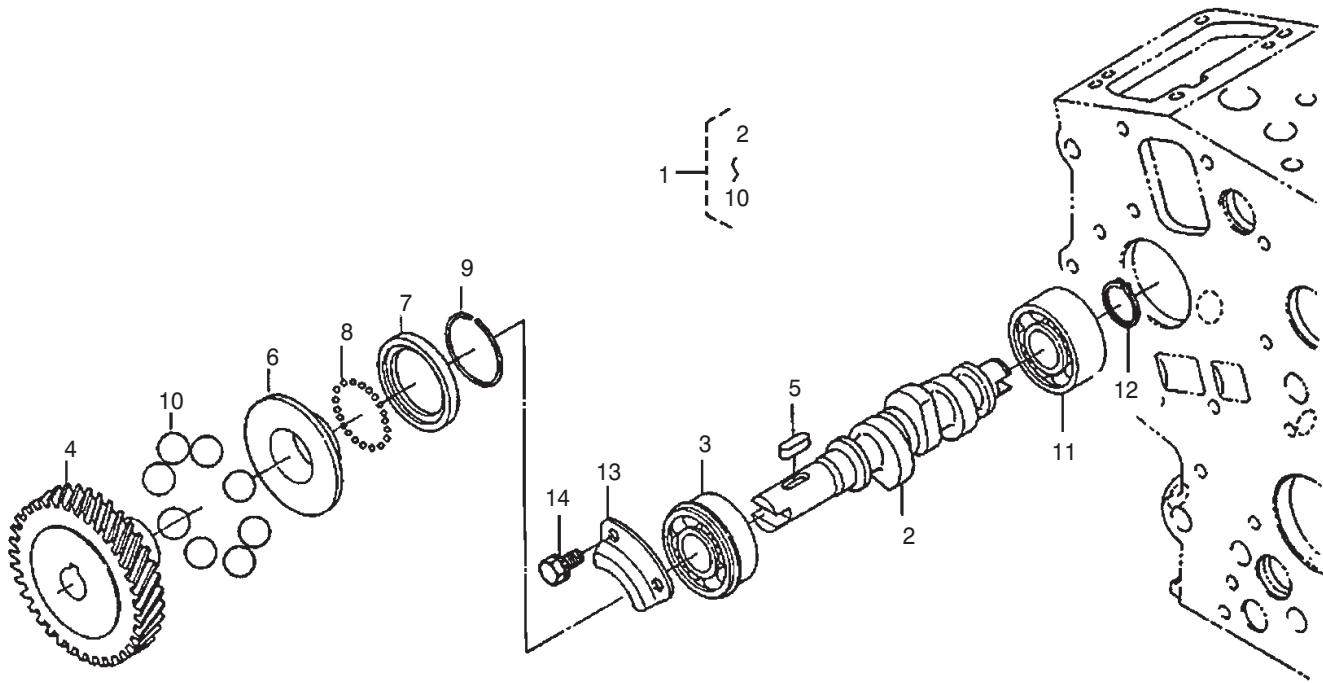
1G299-080-10

Sheet No.:11

Flywheel Assembly

Ref. No.	Part No.	Qty.	Description
1	100-2034	1	Flywheel-Comp.
2	100-2156	1	Gear-Ring
3	100-1930	5	Bolt-Flywheel
4	100-2234	1	Plate-End, Rear
5	98-9359	10	Bolt
6	100-2177	1	Cover
7	98-7585	1	Bolt
8	98-7660	1	Washer-Plain

Ref. No.	Part No.	Qty.	Description



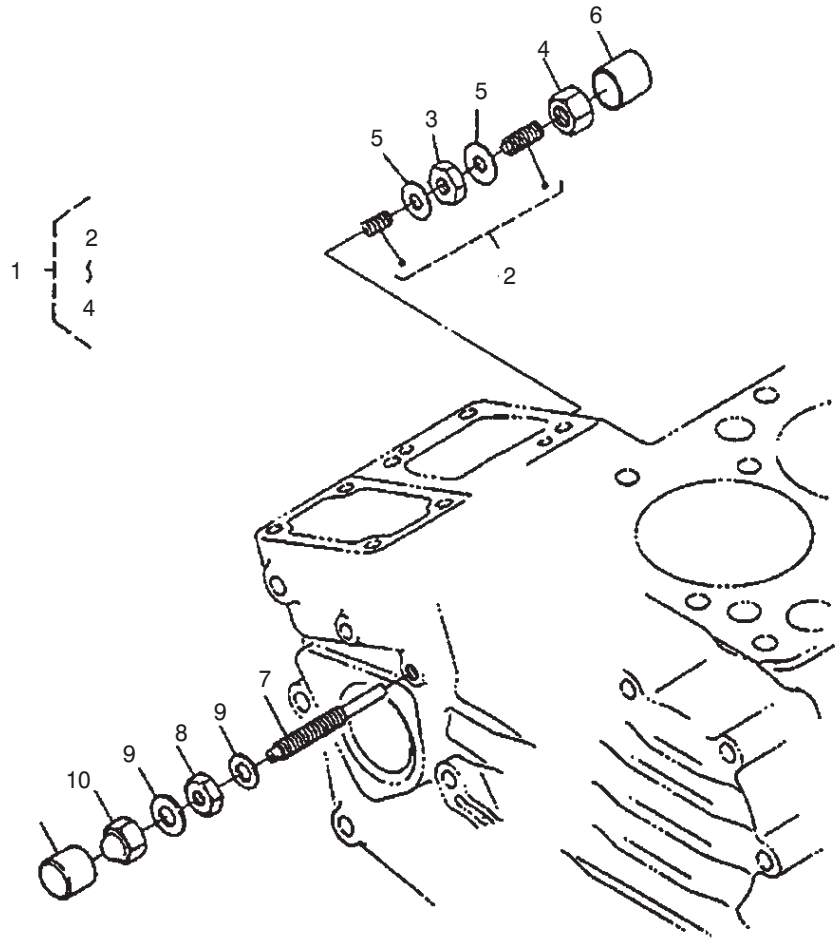
16682-007-10

Sheet No.:12

Fuel Camshaft Assembly

Ref. No.	Part No.	Qty.	Description
1	100-2031	1	Fuel Camshaft ASM
2	100-1965	1	Camshaft
3	100-1795	1	Bearing-Ball
4	100-2006	1	Gear-Pump, Injection
5	100-1752	1	Key,Feather
6	100-1903	1	Sleeve-Governor
7	100-1904	1	Case-Ball, Governor
8	100-1790	32	Ball
9	100-1843	1	Cir-Clip, Gov. Sleeve
10	100-1793	8	Ball
11	100-1794	1	Bearing-Ball
12	100-1784	1	Cir-Clip, External
13	100-1888	1	Stopper-Fuel, C/Shaft
14	98-9350	2	Bolt

Ref. No.	Part No.	Qty.	Description

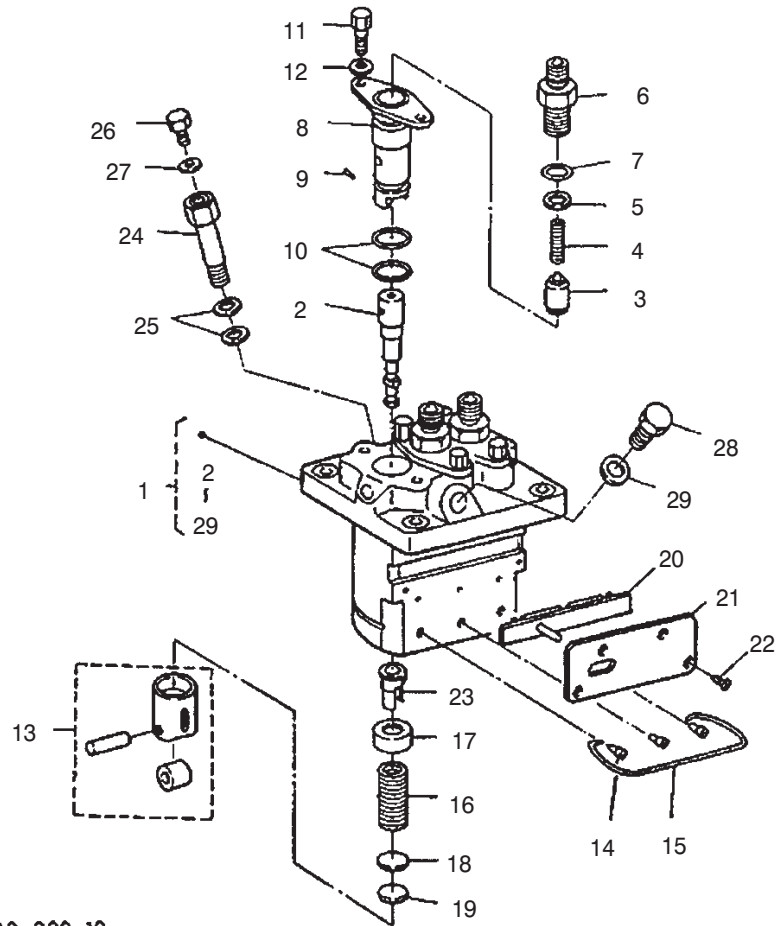


Sheet No.:13

Engine Stop Lever Assembly

Ref. No.	Part No.	Qty.	Description
1	100-1898	1	Idle Apparatus ASM
2	100-1899	1	Adj. Bolt ASM
3	100-1846	1	Nut
4	100-1901	1	Nut-Cap
5	98-7428	2	Gasket
6	100-1902	1	Cap
7	100-1900	1	Bolt-Adjusting
8	100-2175	1	Nut-Lock
9	98-7654	2	Gasket
10	98-9441	1	Nut-Cap

Ref. No.	Part No.	Qty.	Description

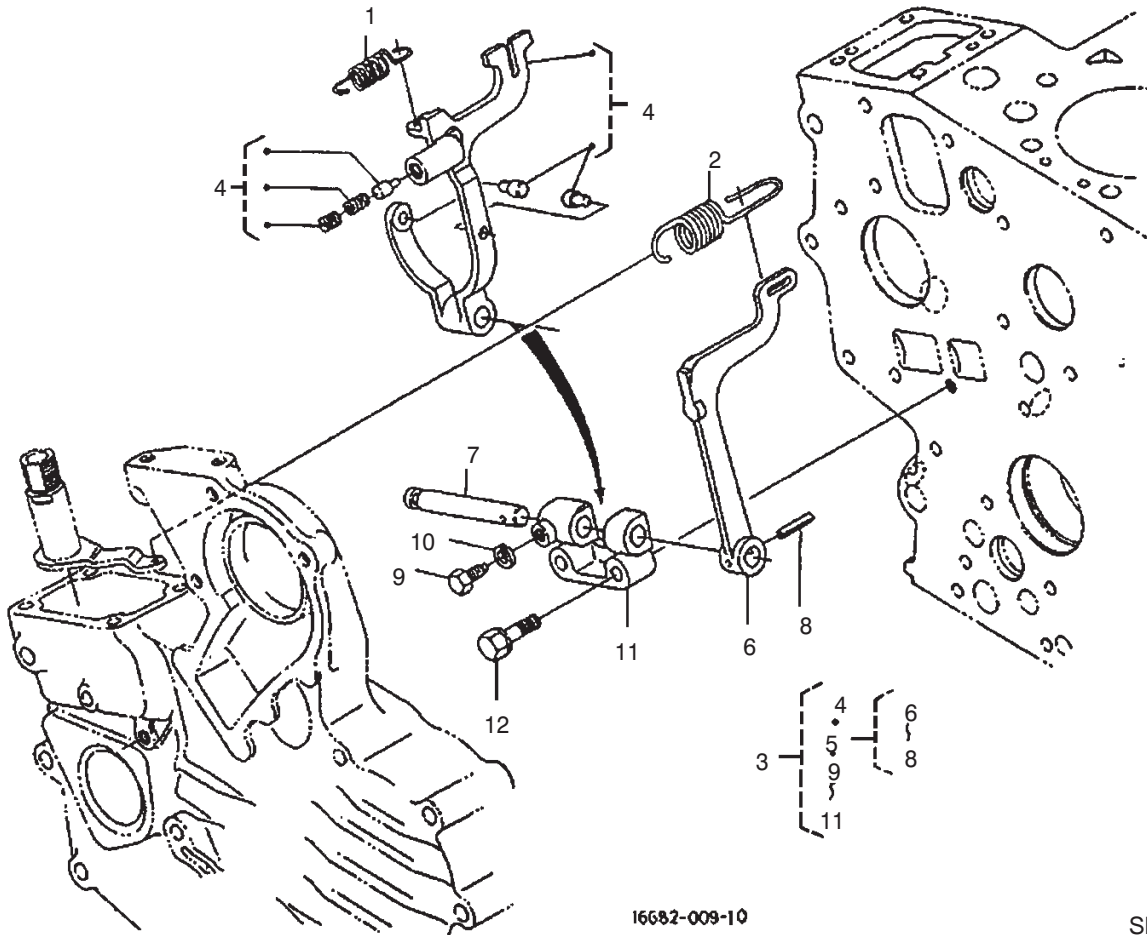


16689-009-10

Sheet No.:15

Injection Pump (Complete Parts)

Ref. No.	Part No.	Qty.	Description	Ref. No.	Part No.	Qty.	Description
1	100-1759	1	Inj. Pump ASM	27	98-9446	1	Gasket
2	100-2005	3	Plunger-Pump	28	100-1953	1	Bolt
3	98-9421	3	Valve-Delivery	29	98-9451	1	Gasket
4	98-9424	3	Spring-Valve, Delev.				
5	98-9425	3	Gasket-Valve, Deliv.				
6	100-2007	3	Holder-Valve, Deliv.				
7	98-9447	3	O-Ring				
8	98-9434	3	Flange-Sleeve				
9	98-9443	3	Pin-Joint				
10	100-1895	6	O-Ring				
11	98-9452	6	Screw				
12	100-1931	6	Washer				
13	98-9422	3	Tappet ASM				
14	98-9426	3	Pin-Guide, Tappet				
15	98-9450	1	Pin-Clamp				
16	98-9428	3	Spring-Plunger				
17	98-9427	3	Seat-Spring, Upper				
18	98-9429	3	Seat-Spring, Lower				
19	98-9433	1	Shim				
20	100-1949	1	Rack-Control				
21	100-1950	1	Plate				
22	98-9442	4	Screw-Head, CSK				
23	98-9432	3	Sleeve-Control				
24	100-1896	1	Screw-Hollow				
25	98-9445	2	Gasket				
26	98-9430	1	Screw				



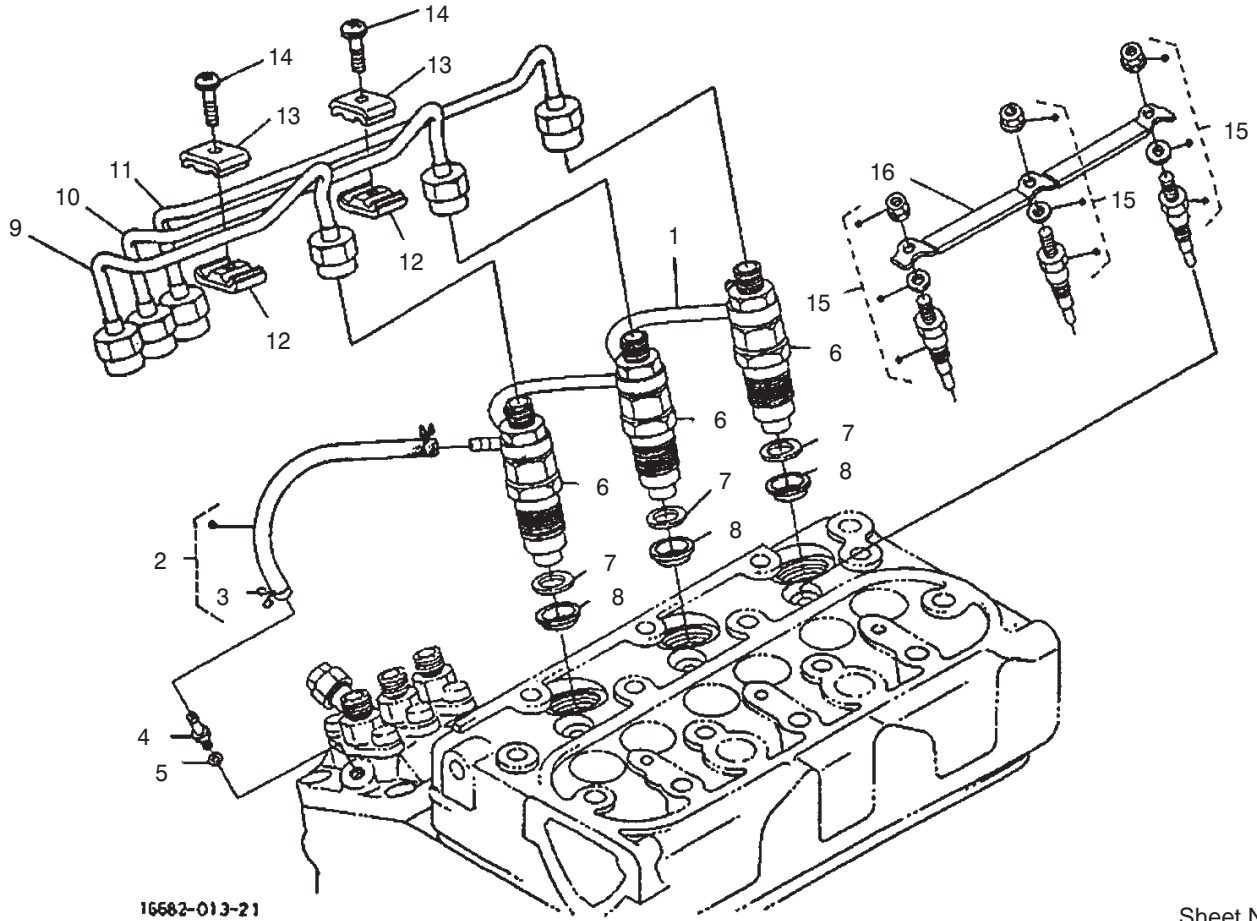
16682-009-10

Sheet No.:16

Governor Assembly

Ref. No.	Part No.	Qty.	Description
1	100-1911	1	Spring-Start
2	100-2059	1	Spring, Governor
3	100-1981	1	Assy Lever, Fork
4	100-2241	1	Lever-Fork, Comp.
5	100-1905	1	Fork Lever ASM
6	100-1907	1	Lever, Fork
7	100-1908	1	Shaft, Fork Lever
8	100-1751	1	Pin, Spring
9	100-1845	1	Bolt
10	100-2204	1	Washer-Spring
11	100-1909	1	Holder, Fork Lever
12	100-1763	2	Bolt

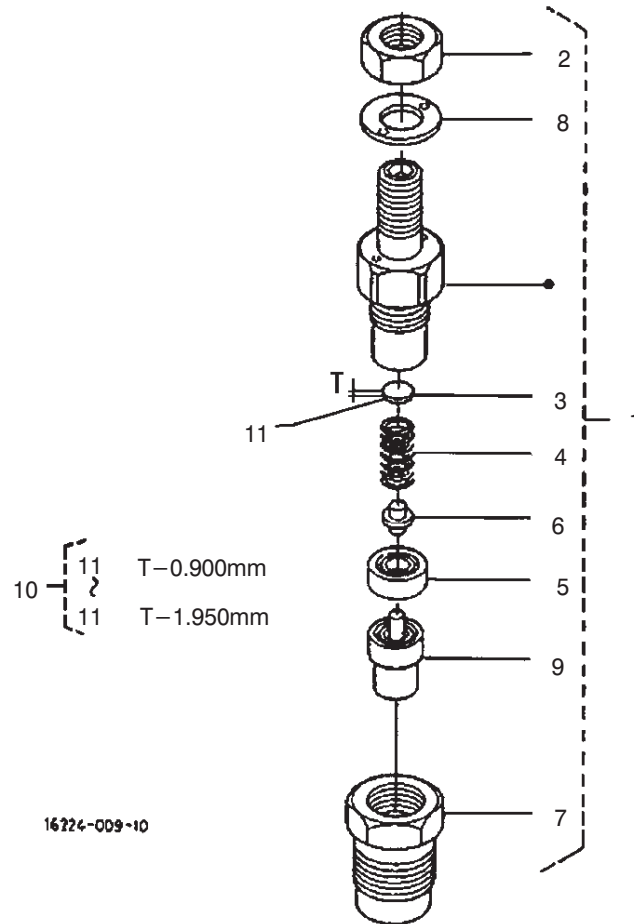
Ref. No.	Part No.	Qty.	Description



Nozzle Holder and Glow Plugs Assembly

Ref. No.	Part No.	Qty.	Description
1	100-1960	1	Over Flow Pipe ASM
2	98-9420	1	Over Flow Pipe ASM
3	98-7671	2	Clip-Pipe
4	98-9431	1	Screw-Bleeder, Air
5	98-7654	1	Gasket
6	100-1758	3	Nozzle Holder ASM
7	98-7676	3	Gasket
8	98-7677	3	Seal
9	100-2011	1	Pipe-Injection
10	100-2013	1	Pipe-Injection
11	100-2036	1	Pipe-Injection
12	98-7682	2	Clamp-Pipe
13	98-7683	2	Clamp-Pipe
14	98-7684	2	Screw,w/Washer
15	100-1854	3	Plug-Glow
16	100-2037	1	Cord-Plug, Glow

Ref. No.	Part No.	Qty.	Description

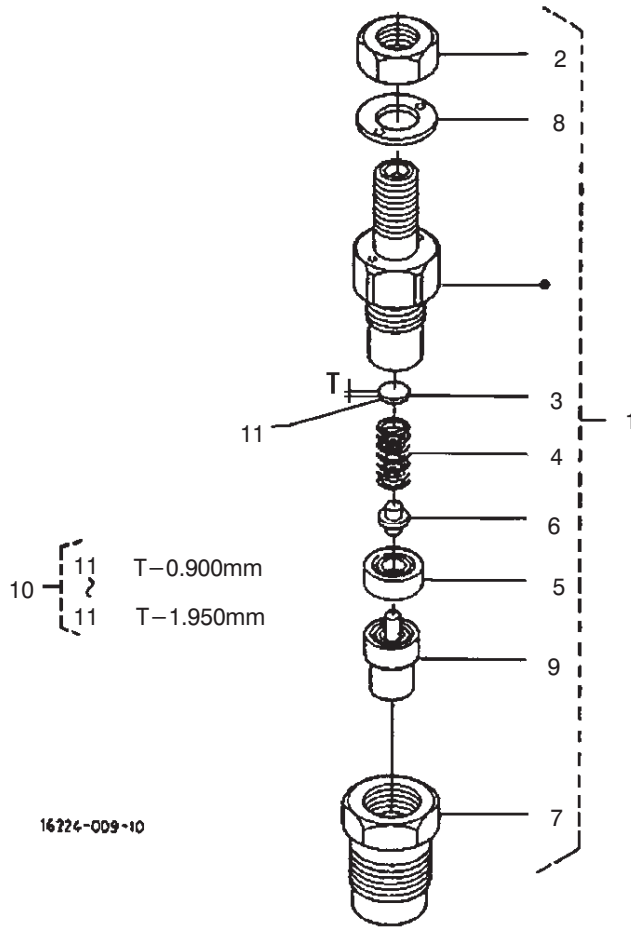


Sheet No.:19

Nozzle Holder (Complete Parts)

Ref. No.	Part No.	Qty.	Description
1	100-1758	3	Nozzle Holder ASM
2	98-7613	3	Nut
3	98-7642	3	Washer-Adjusting
4	98-7647	3	Spring-Nozzle
5	98-7665	3	Piece-Distant
6	98-7666	3	Rod-Push
7	100-2242	3	Nut-Nozzle
8	98-7668	3	Washer
9	100-2009	3	Piece-Nozzle
10	98-9448	1	Adj Washer ASM
11	98-7642	1	Washer - Adj. (.900)
11	98-7841	1	Washer - Adj. (.925)
11	98-7842	1	Washer - Adj. (.950)
11	98-7843	1	Washer - Adj. (.975)
11	98-7844	1	Washer - Adj. (1.000)
11	98-7845	1	Washer - Adj. (1.025)
11	98-7846	1	Washer - Adj. (1.050)
11	98-7847	1	Washer - Adj. (1.075)
11	98-7848	1	Washer - Adj. (1.100)
11	98-7849	1	Washer - Adj. (1.125)
11	98-7850	1	Washer - Adj. (1.150)
11	98-7851	1	Washer - Adj. (1.175)
11	98-7852	1	Washer - Adj. (1.200)
11	98-7853	1	Washer - Adj. (1.225)
11	98-7854	1	Washer - Adj. (1.250)
11	98-7855	1	Washer - Adj. (1.275)

Ref. No.	Part No.	Qty.	Description
11	98-7856	1	Washer - Adj. (1.300)
11	98-7857	1	Washer - Adj. (1.325)
11	98-7858	1	Washer - Adj. (1.350)
11	98-7859	1	Washer - Adj. (1.375)
11	98-7860	1	Washer - Adj. (1.400)
11	98-7861	1	Washer - Adj. (1.425)
11	98-7862	1	Washer - Adj. (1.450)
11	98-7863	1	Washer - Adj. (1.475)
11	98-7864	1	Washer - Adj. (1.500)
11	98-7865	1	Washer - Adj. (1.525)
11	98-7866	1	Washer - Adj. (1.550)
11	98-7867	1	Washer - Adj. (1.575)
11	98-7868	1	Washer - Adj. (1.600)
11	98-7869	1	Washer - Adj. (1.625)
11	98-7870	1	Washer - Adj. (1.650)
11	98-7871	1	Washer - Adj. (1.675)
11	98-7872	1	Washer - Adj. (1.700)
11	98-7873	1	Washer - Adj. (1.725)
11	98-7874	1	Washer - Adj. (1.750)
11	98-7875	1	Washer - Adj. (1.775)
11	98-7876	1	Washer - Adj. (1.800)

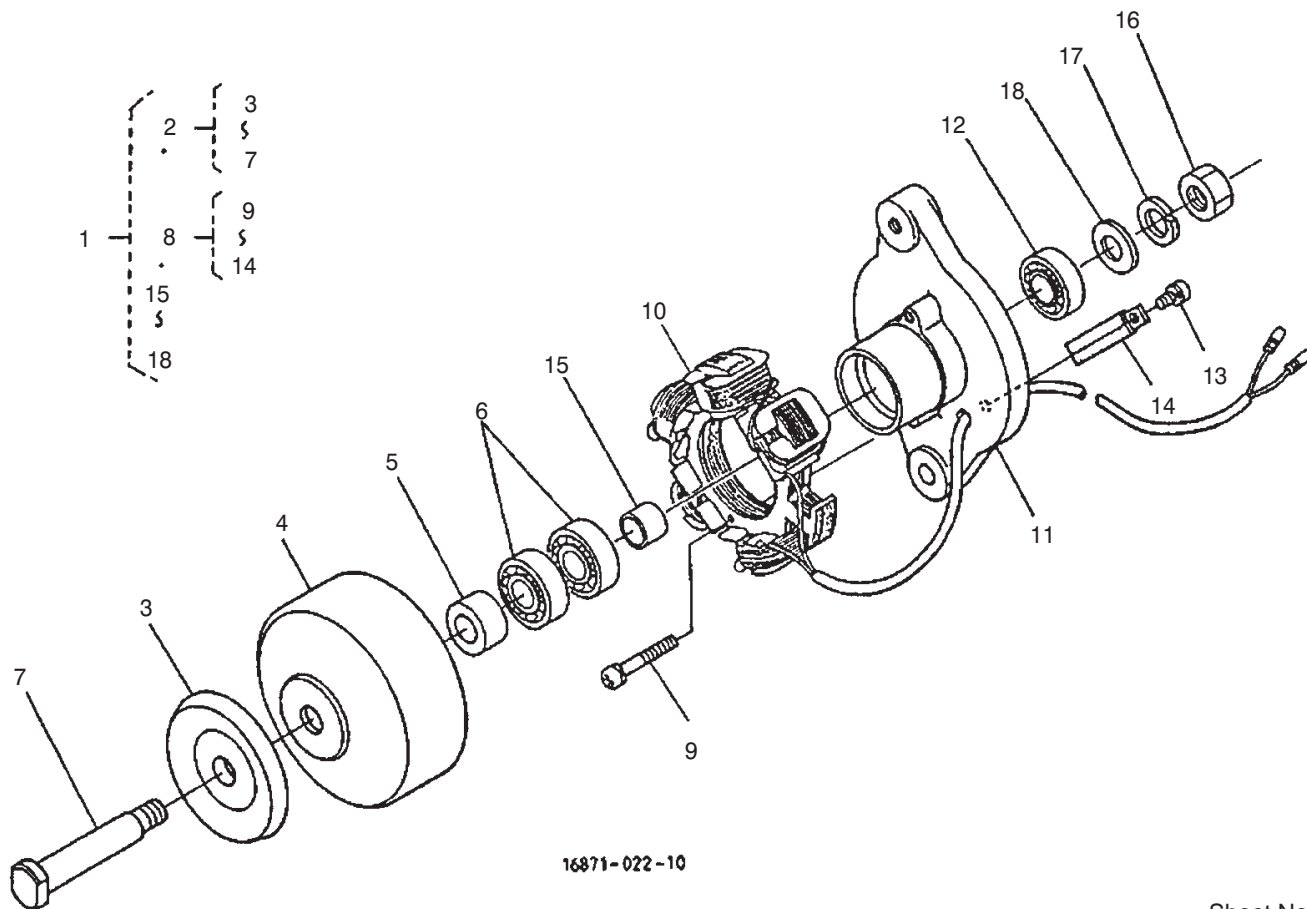


Sheet No.:19

Nozzle Holder (Complete Parts Continued)

Ref. No.	Part No.	Qty.	Description
11	98-7877	1	Washer - Adj. (1.825)
11	98-7878	1	Washer - Adj. (1.850)
11	98-7879	1	Washer - Adj. (1.875)
11	98-7880	1	Washer - Adj. (1.900)
11	98-7881	1	Washer - Adj. (1.925)
11	98-7882	1	Washer - Adj. (1.950)

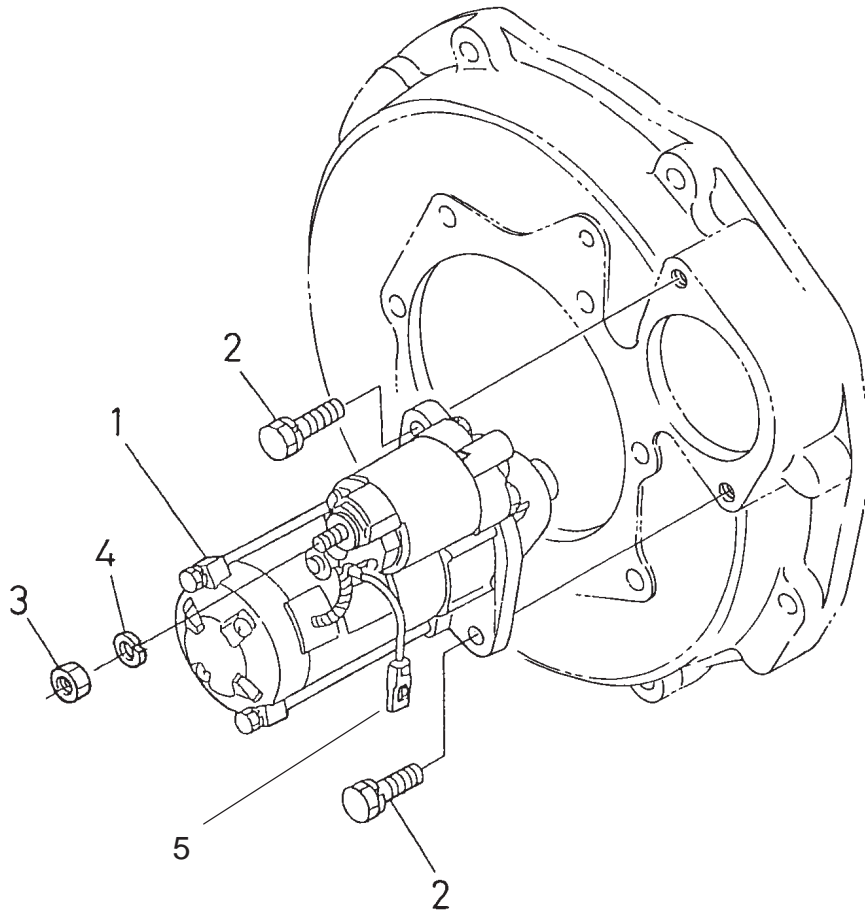
Ref. No.	Part No.	Qty.	Description



Sheet No.:22

Dynamo (Complete Parts)

Ref. No.	Part No.	Qty.	Description		Ref. No.	Part No.	Qty.	Description
1	100-2168	1	Dynamo ASM					
2	100-1862	1	Rotor-Comp.					
3	100-2228	1	Pulley					
4	100-1860	1	Rotor					
5	100-2184	1	Collar					
6	100-1756	2	Bearing-Ball					
7	100-1867	1	Shaft-Fan					
8	100-1866	1	Stator-Comp.					
9	100-1848	2	Screw-Head, Round					
10	100-1865	1	Stator					
11	100-1861	1	Plate					
12	100-1756	1	Bearing-Ball					
13	100-1868	1	Screw-Head, Round					
14	100-1864	1	Clamp-Cord					
15	100-1844	1	Collar					
16	100-1847	1	Nut					
17	100-1850	1	Washer-Spring					
18	100-1849	1	Washer-Plain					



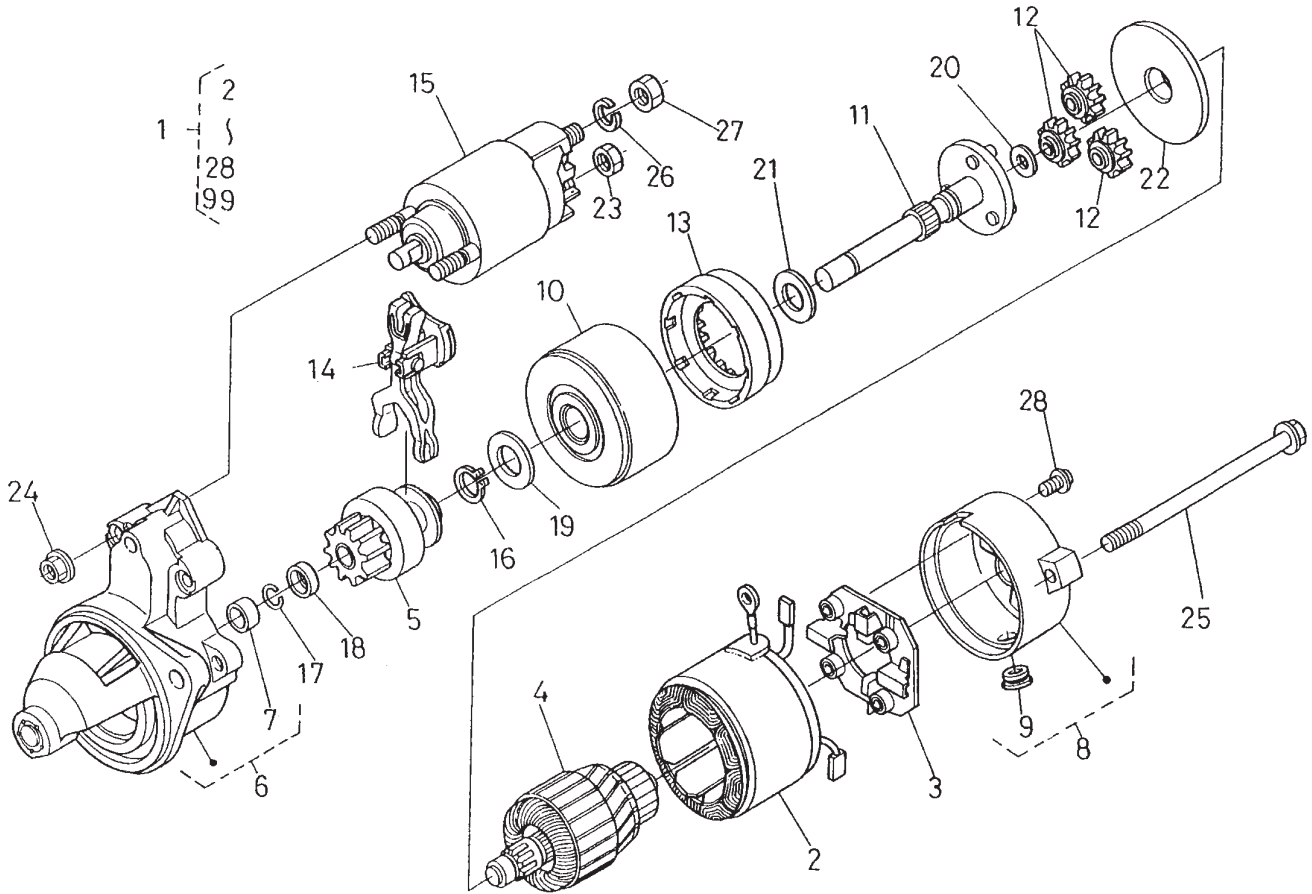
1G299-085-10

Sheet No.:23

Starter Assembly

Ref. No.	Part No.	Qty.	Description
1	100-2179	1	Starter ASM
2	100-7438	2	Bolt
3	98-7739	1	Nut
4	98-7535	1	Washer-Spring
5	99-1434	1	Wire-Lead

Ref. No.	Part No.	Qty.	Description



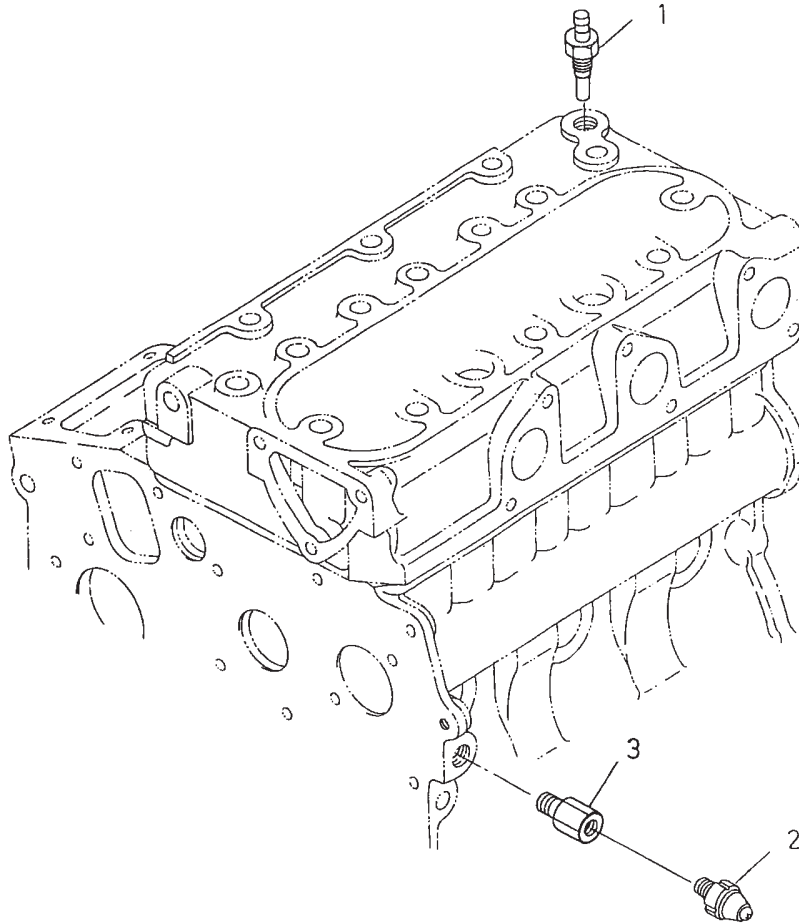
67992-001-10

Sheet No.:24

Starter (Complete Parts)

Ref. No.	Part No.	Qty.	Description
1	100-2179	1	Starter ASM
2	100-2181	1	Starter Yoke ASM
3	100-2222	1	Holder ASM
4	100-2182	1	Armature ASM
5	100-2185	1	Starter Clutch ASM
6	100-2180	1	Starter Housing ASM
7	100-2183	1	Bearing
8	100-2186	1	Frame ASM
9	100-2213	1	Cover
10	100-2223	1	Bearing ASM
11	100-2187	1	Starter Shaft ASM
12	100-2220	3	Gear
13	100-2221	1	Gear
14	100-2218	1	Lever
15	100-2211	1	Magnetic Switch ASM
16	100-2219	1	Ring-Snap
17	100-2212	1	Ring-Snap
18	100-2216	1	Collar
19	100-2224	1	Washer-Plain
20	100-2225	1	Washer-Plain
21	100-2226	1	Washer-Plain
22	100-2227	1	Plate
23	100-2243	1	Nut-Hex
24	100-1813	2	Nut
25	100-2210	2	Bolt-Through
26	100-2215	1	Washer-Spring

Ref. No.	Part No.	Qty.	Description
27	100-2171	1	Nut-Hex
28	100-2188	2	Screw
99	99-1434	1	Wire-Lead



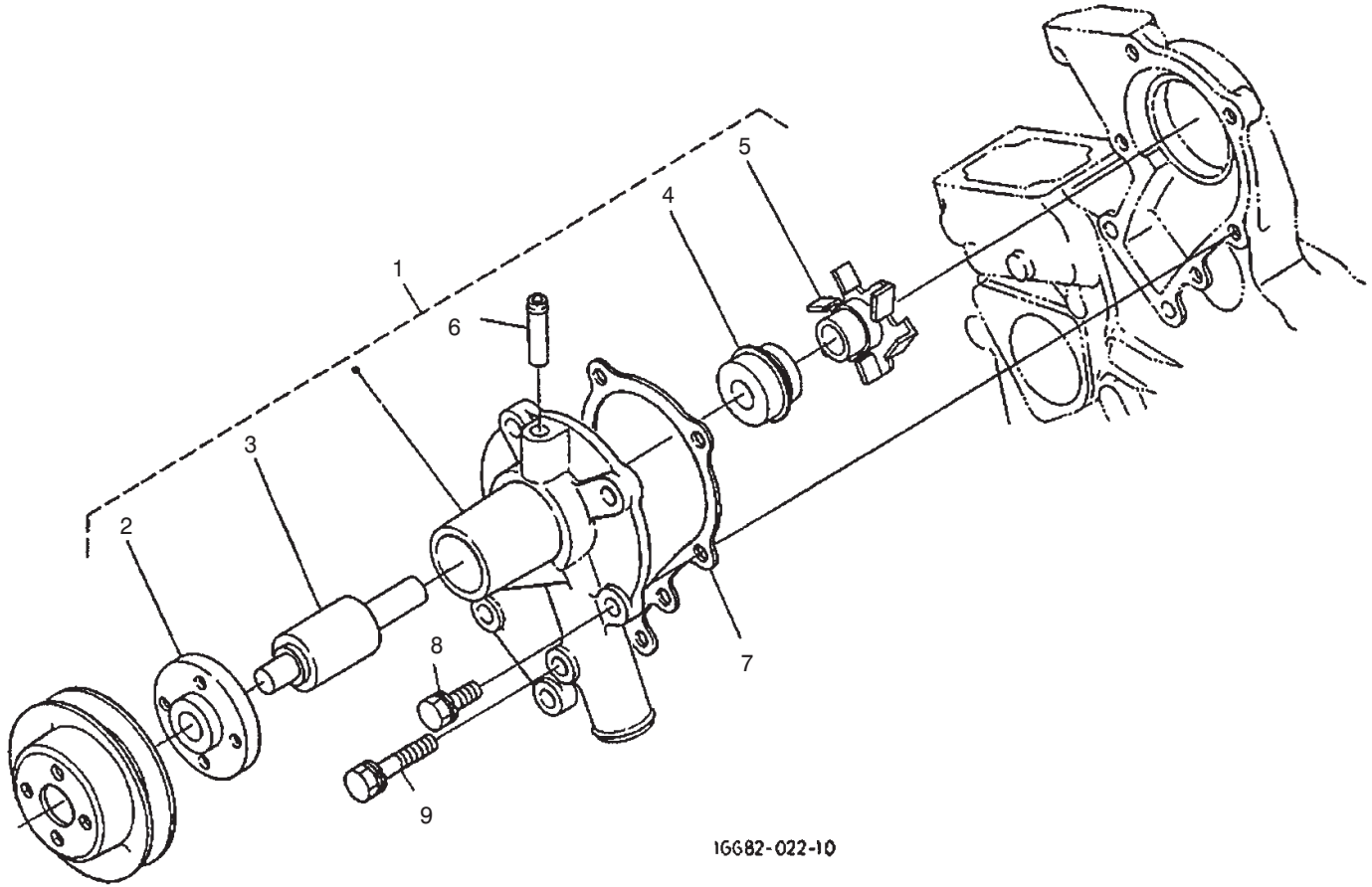
1G299-086-10

Sheet No.:25

Oil Switch and Thermostats Assembly

Ref. No.	Part No.	Qty.	Description
1	99-3582	1	Thermo-Switch
2	98-7764	1	Switch-Oil
3	100-2170	1	Holder-Signal, Oil

Ref. No.	Part No.	Qty.	Description
----------	----------	------	-------------



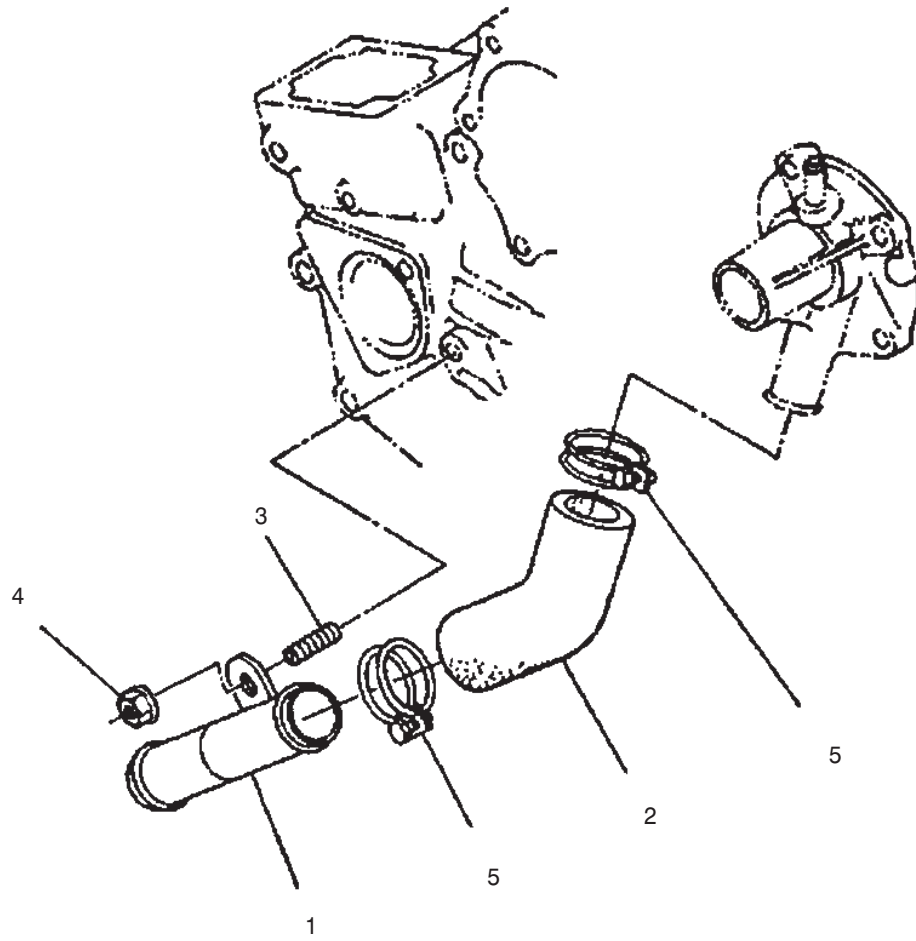
16682-022-10

Sheet No.:27

Water Pump Assembly

Ref. No.	Part No.	Qty.	Description
1	100-2065	1	Water Pump ASM
2	100-1933	1	Flange, Water Pump
3	100-1934	1	Bearing, Ball
4	99-3518	1	Seal ASM, Water Pump
5	100-2067	1	Impeller, Water Pump
6	100-1932	1	Pipe, Water Return
7	100-1976	1	Gasket, Water Pump
8	100-1750	4	Bolt
9	100-1764	1	Bolt

Ref. No.	Part No.	Qty.	Description

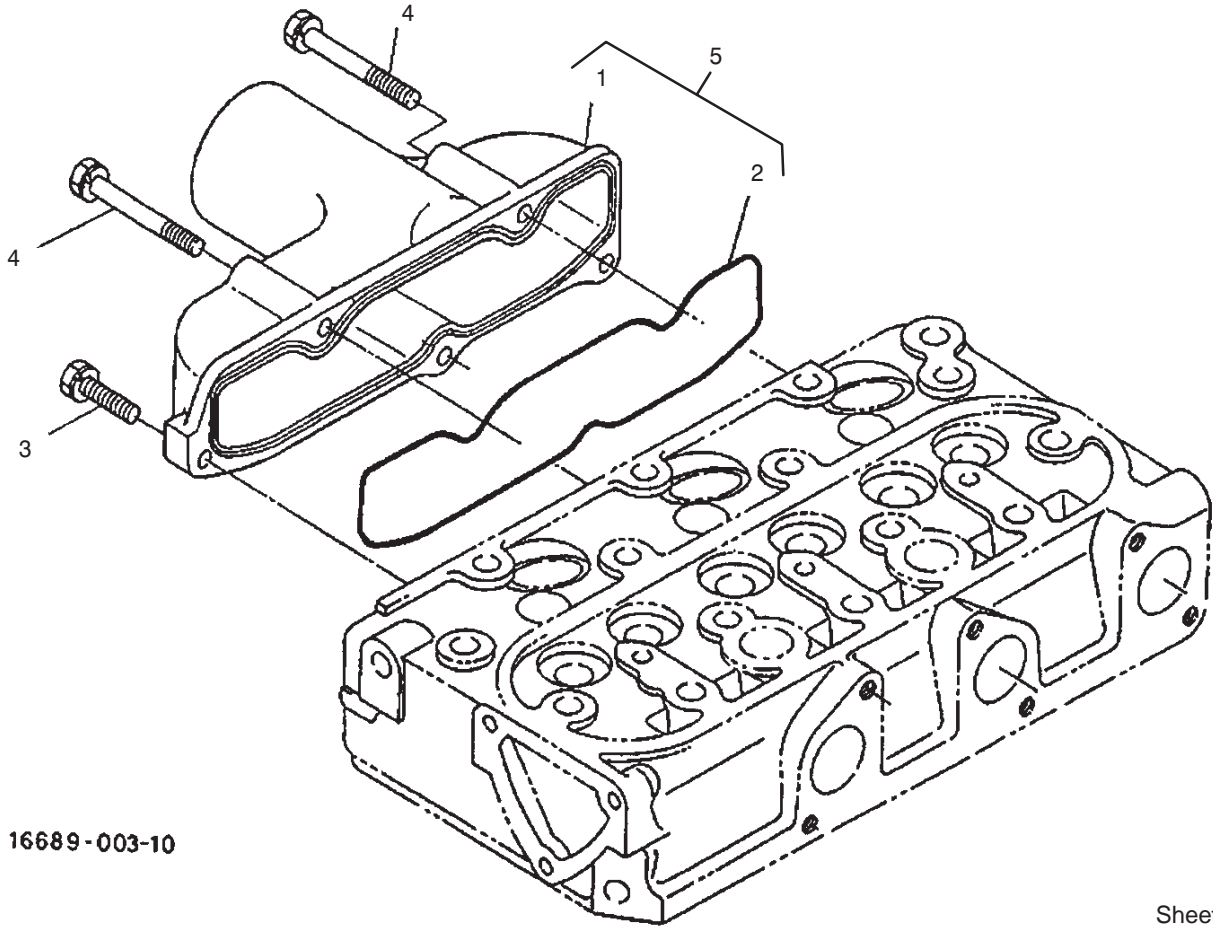


Sheet No.:28

Water Pipe Assembly

Ref. No.	Part No.	Qty.	Description
1	100-1918	1	Pipe, Water
2	100-1975	1	Pipe, Water
3	100-1924	1	Stud
4	100-2203	1	Nut-Flange
5	100-1753	2	Clamp, Hose

Ref. No.	Part No.	Qty.	Description



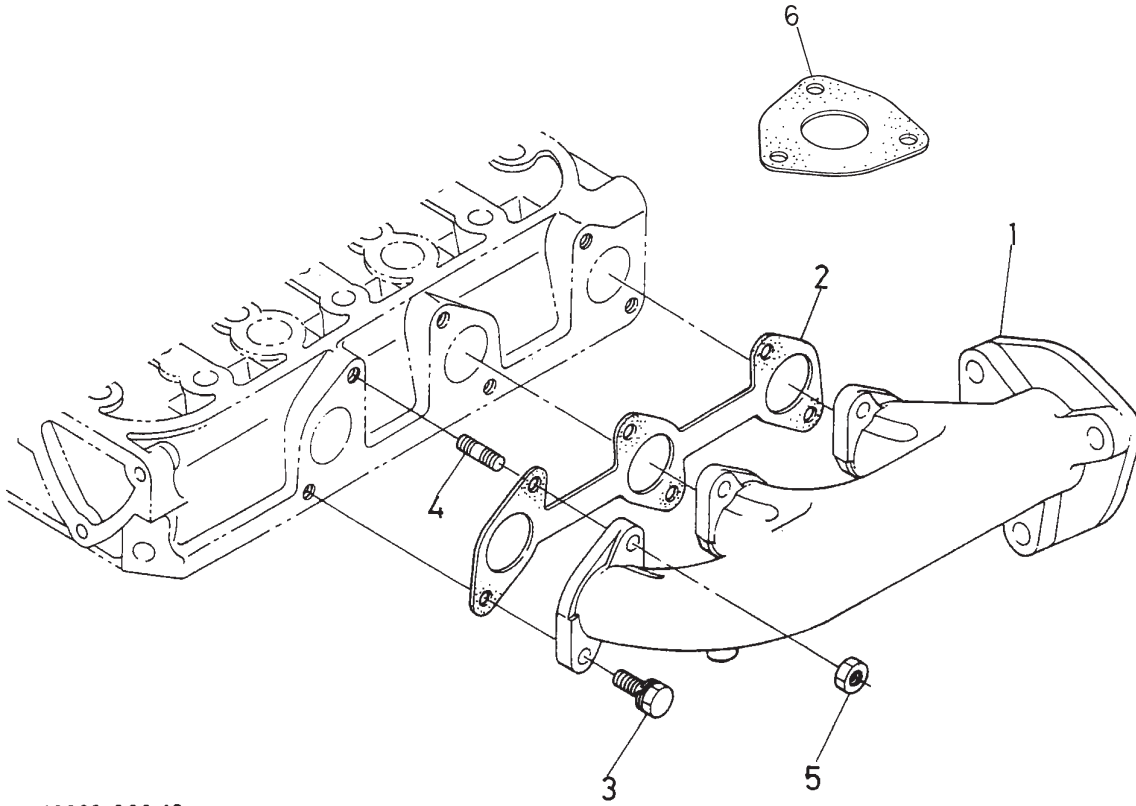
16689-003-10

Sheet No.:30

Inlet Manifold Assembly

Ref. No.	Part No.	Qty.	Description
1	100-2235	1	Manifold, Inlet
2	100-1937	1	Gasket, In-Manifold
3	98-7605	2	Bolt
4	100-1765	3	Bolt
5	100-2236	1	Inlet Manifold ASM

Ref. No.	Part No.	Qty.	Description
----------	----------	------	-------------

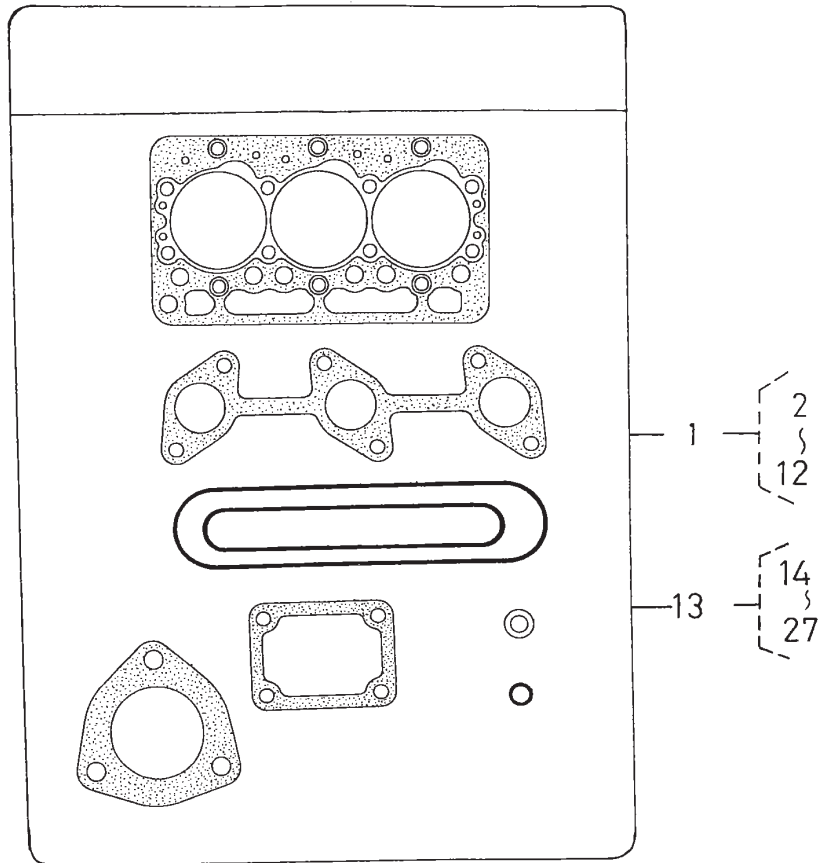


Sheet No.:31

Exhaust Manifold Assembly

Ref. No.	Part No.	Qty.	Description
1	100-2244	1	Manifold, Exhaust
2	100-1957	1	Gasket
3	100-1775	3	Bolt, Ubs
4	100-2202	3	Stud
5	100-1778	3	Nut, Ubs
6	100-2238	1	Gasket, Muffler

Ref. No.	Part No.	Qty.	Description



19449-018-10

Sheet No.:32

Gasket Kit

Ref. No.	Part No.	Qty.	Description
1	100-2176	1	Kit-Gasket, Upper
2	98-7509	1	O-Ring
3	100-2043	1	Gasket-Head, Cylinder
4	100-1937	1	Gasket-In-Manifold
5	100-1957	1	Gasket
6	100-1797	6	Seal-Stem, Valve
7	100-2030	1	Gasket-Cover, Head
8	98-7654	3	Gasket
9	99-3446	1	O-Ring
10	100-1919	1	Gasket-Flange, Water
11	100-2157	1	Gasket-Thermostat
12	100-2238	1	Gasket-Muffler
13	100-2174	1	Kit-Gasket, Lower
14	100-1976	1	Gasket-Pump, Water
15	100-1954	1	Gasket-Case, Gear
16	100-2206	3	O-Ring
17	100-1929	1	Gasket-Case, Bearing
18	100-1876	1	Gasket-Case, Bearing
19	100-2209	1	O-Ring
20	100-2205	1	O-Ring
21	100-2003	1	Gasket-Pump, Oil
22	98-9636	1	Gasket-Pump, Fuel
23	100-2061	1	Gasket-Gearcase, H/M
24	100-1914	1	Gasket
25	98-7428	2	Gasket

Ref. No.	Part No.	Qty.	Description
26	100-2208	1	O-Ring
27	100-2207	1	O-Ring

