



5 and 8 Blade 27" Cutting Unit

For Reelmaster 2300D and 3100D

Model No. 03210—200000001 and Up

Model No. 03211—200000001 and Up

Parts Catalog

Ordering Replacement Parts

To order replacement parts, please supply: the part number, the quantity, and the description of each part desired.

Understanding Reference Numbers

Each identified part in an illustration has a reference number. The reference number for a part also appears in the parts list, along with other information about the part.

This catalog uses two special reference number formats, one to indicate parts in a service assembly and another to indicate the quantity of a given part in an illustration.

Service Assembly Reference Numbers

Parts in service assemblies have reference numbers in the form **a:b**. The **a** represents the reference number of the entire service assembly and the **b** represents a sequential number unique to each part within the service assembly.

For example, a wheel assembly might be identified by reference number **6**, the tire by **6:1**, the valve by **6:2**, and the wheel by **6:3**. When you order the assembly identified by reference number **6**, you receive all parts identified by reference numbers **6:1**, **6:2**, and **6:3**. However, you may also order any part individually.

Reference numbers of this type appear in illustrations and in part lists.

Reference Numbers Indicating Quantity

In an illustration, if a reference number indicates more than one part, the reference number has the form **nX y**. The **n** represents the quantity of the part, the **X** is the multiplication symbol, and the **y** represents the reference number.

For example, in an illustration, the reference number **2X 37** means that two of the parts identified by reference number **37** are indicated.

Contents

Description	Page	Description	Page
Reel Assembly	3	Roller Assembly	5
Bedbar Assembly	4		

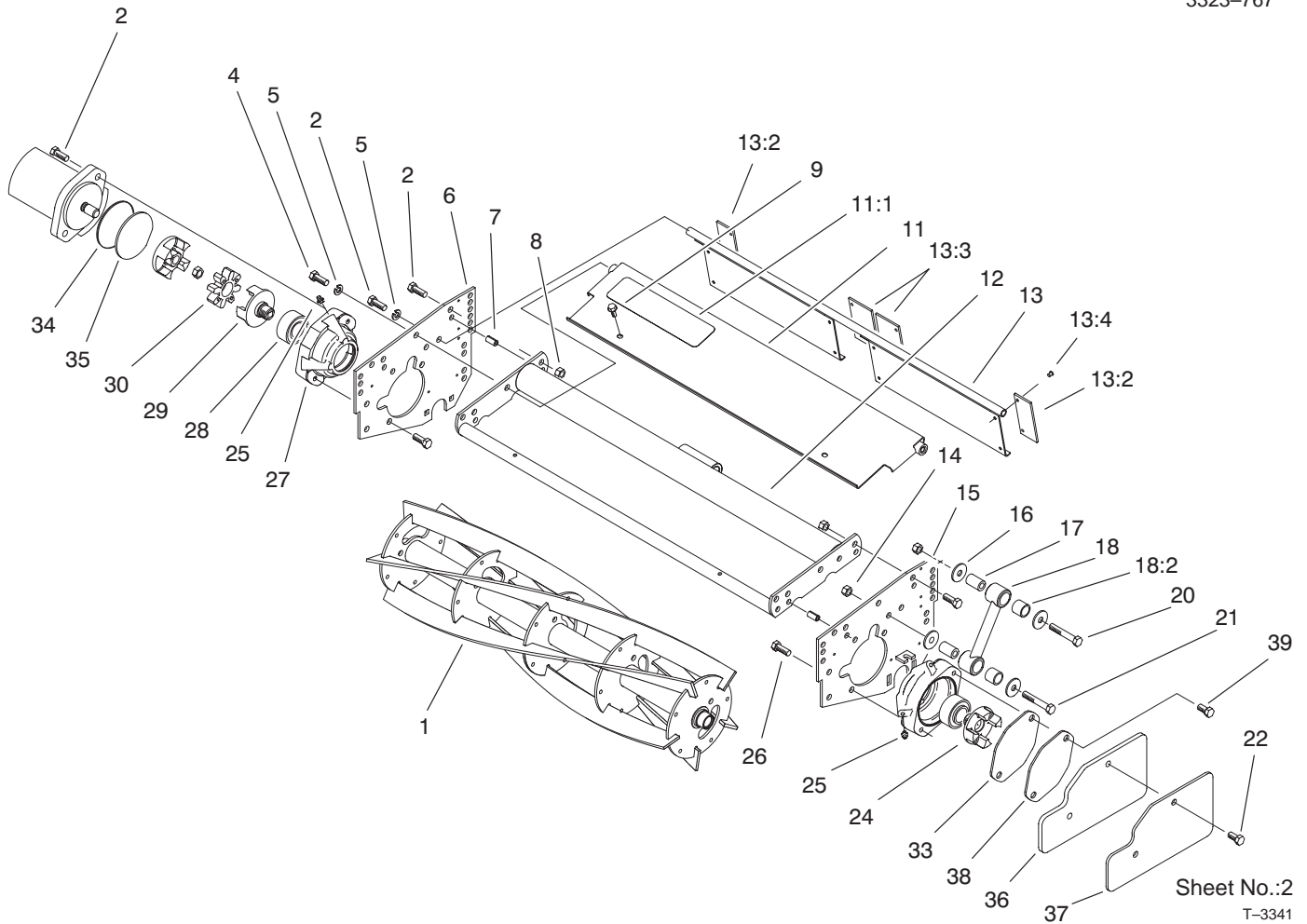
Accessories

Description	Model / Part No.	Description	Model / Part No.
Lift Arm Kit (RM2300)	03471	Anti-Scalp Roller Kit	03447
Lift Arm Kit (RM3100)	03220	Wiehle Roller Scraper Kit	94-5082
Basket Kit	03223	Full Roller Scraper Kit	60-9560
Wiehle Roller Kit	03450	Fixed Cutting Unit Kit	93-6915
Full Roller Kit	03440	Comb Kit	67-9400
Sectional Roller Kit	03445	Skid Kit	94-3664

Part Description Abbreviations

Part descriptions in this catalog may include the following abbreviations.

Abbreviation	Meaning	Abbreviation	Meaning
AR	as required	INC	incorporated
ASM	assembly	LH	left hand
CARR	carriage	NI	nylon insert
DEG	degrees	PPH	Phillips pan head
FH	flat head	PTH	Phillips truss head
GA	gauge	PTO	power take off
HF	hex flange	RH	right hand
HH	hex head	SFH	slotted fillister head
HHF	hex head flange	SHH	slotted hex head
HLH	hex lag head	SQH	square head
HJ	hex jam	SHWH	slotted hex washer head
HOC	height-of-cut	SPH	slotted pan head
HS	hex socket	SRH	slotted round head
HSBH	hex socket button head	STD	standard
HSFH	hex socket flat head	TAP	self tapping
HSH	hex socket head	TTH	Torx truss head
HWH	hex washer head	WH	wing head
HWHTF	hex washer head thread forming		



Sheet No.:2

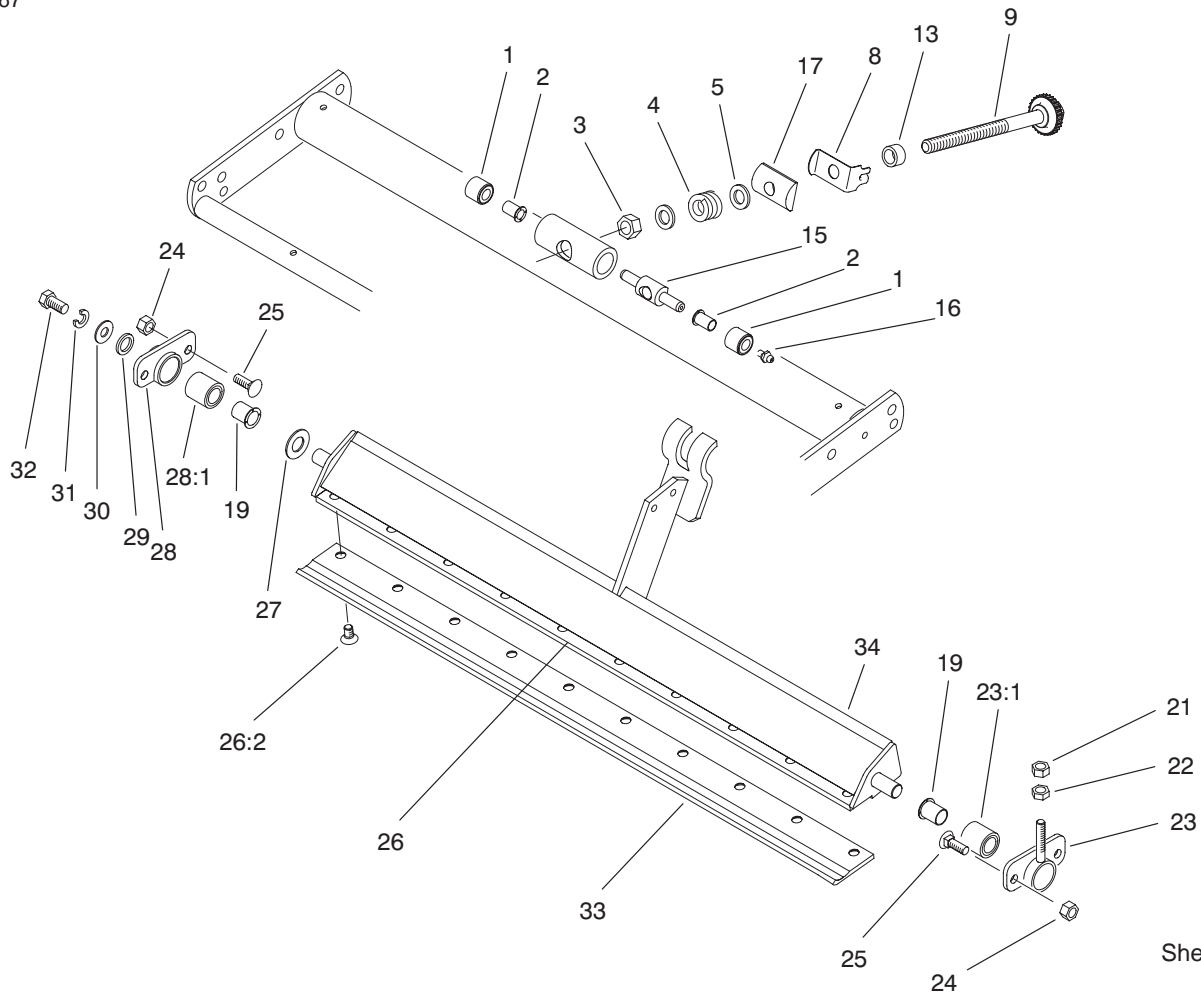
T-3341

Reel Assembly

Ref. No.	Part No.	Qty.	Description
1	99-3482	1	Reel-5 Blade (only on: 03210)
*1	99-3483	1	Reel-8 Blade (only on: 03211)
2	323-6	10	Screw-HH
4	323-7	2	Screw-HH
5	3253-5	4	Washer-Lock/Sp
6	94-3695-01	1	Plate-Side Reel, RH
7	32121-36	4	Pin-Spring
8	3296-39	6	Nut-Lock, NI
9	32144-10	2	Screw-HWH
11	94-3621	1	Guard-Grass
11:1	93-8064	1	Decal-Danger
12	95-8753-01	1	Reel Frame ASM
13	93-8849	1	Grass Guard ASM
13:2	61-3280	2	Cover-Rubber
13:3	61-3290	2	Cover-Rubber, Mid
13:4	700382	12	Rivet
14	32128-36	8	Nut-HF
15	94-3697-01	1	LH Side Plate ASM
16	93-8806	16	Washer-Hardened
17	93-6981	8	Spacer
18	16-9759	4	Link And Bushing ASM
18:2	94-8945	8	Bushing
20	323-11	4	Screw-HH
21	323-10	4	Screw-HH

Ref. No.	Part No.	Qty.	Description
22	323-8	2	Screw-HH
24	93-8826	1	Coupler-Reel, LH Thread
25	302-5	4	Fitting-Lube
26	3234-1	4	Screw-HHF
27	99-3404	2	Housing-Bearing
28	100-4926	2	Bearing-Aligning, Self
29	93-8825	1	Coupler-Reel, RH Thread
30	93-8827	1	Spider-Coupler
33	94-5979	2	Gasket
34	353-949	1	O-Ring
35	94-2703	1	Plug (For shipping)
36	94-3699-01	3	Weight-3.5 Lbs (Only on: 3100D)
37	99-3442-01	1	Weight-2.0 Lbs (Only on: 3100D)
38	93-6960	1	Cover-Holder, Bearing
39	323-2	2	Screw-HH

* Not Illustrated.

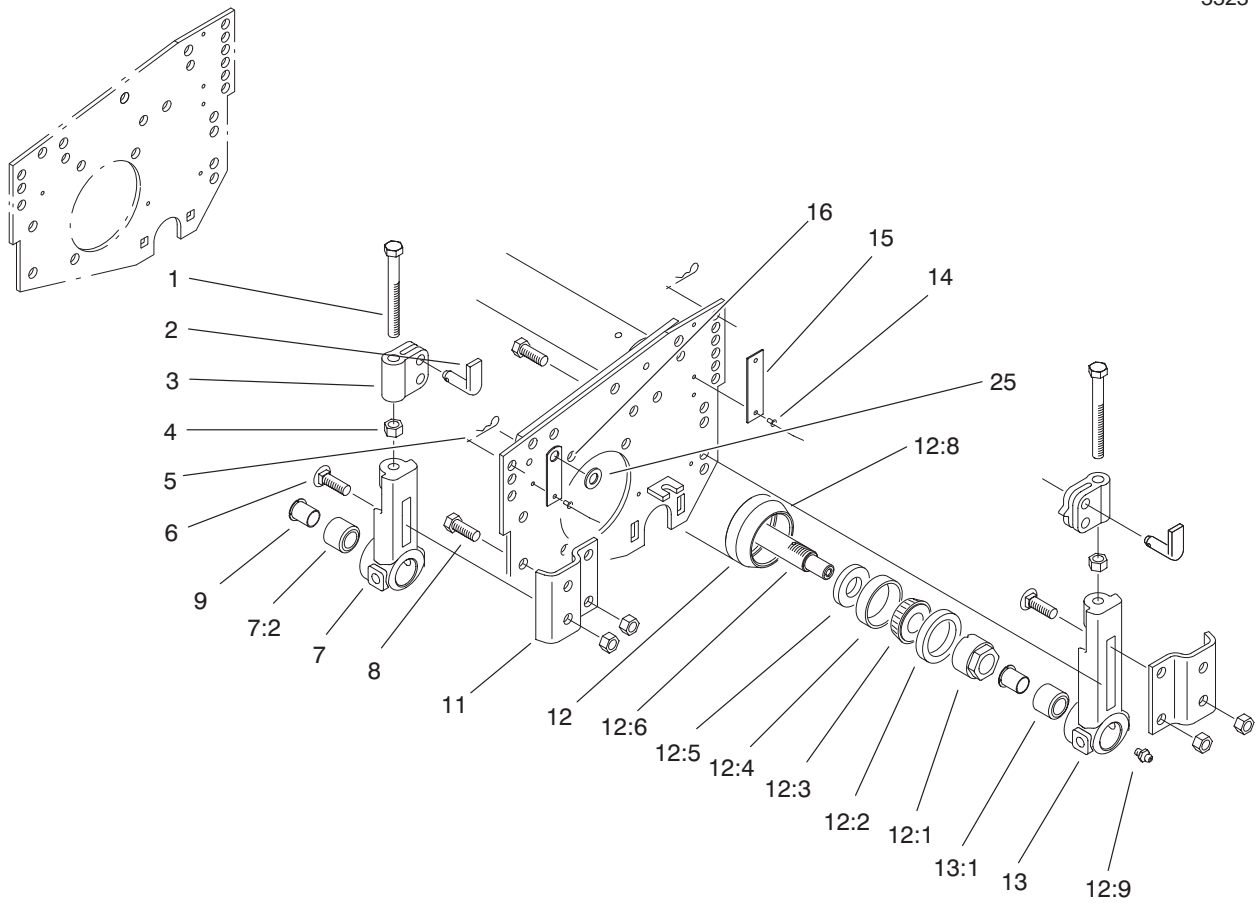


Sheet No.:3
T-3342

Bedbar Assembly

Ref. No.	Part No.	Qty.	Description
1	62-5510	2	Bushing-Rubber
2	52-2890	2	Bushing-Nylon
3	3296-62	1	Nut-Lock NI
4	57-5270	1	Spring-Comp
5	29-8910	2	Washer
8	95-8752	1	Arm-Spring
9	95-8877	1	Bedbar Adjuster ASM
13	93-2959	1	Spacer-Adjuster
15	57-5260	1	Bedbar Pivot
16	302-18	1	Grease Fitting
17	93-2892	1	Pivot-Bedbar,Main Adj
19	56-9520	2	Bushing-Flanged
21	3296-4	1	Nut-Lock NI
22	3219-2	1	Nut-Hex
23	16-9769	1	Bedbar Adj. Hsg. & Bshg ASM
23:1	56-9510	1	Bushing ASM
24	3296-29	4	Nut-Lock,NI
25	3230-1	4	Screw-CARR
26		1	Bedbar ASM
26:2	57-4910	10	Screw-Spec
27	61-1950	1	Washer-Bedbar
28	14-4459	1	Housing-Bedbar
28:1	56-9510	1	Bushing ASM
29	62-7120	1	Washer
30	3256-56	1	Washer-Flat

Ref. No.	Part No.	Qty.	Description
31	3253-4	1	Washer
32	322-3	1	Screw-HH
33	62-5180	1	Bedknife
34	95-8739-01	1	Machining-Bedbar



Sheet No.:4
T-3343

Roller Assembly

Ref. No.	Part No.	Qty.	Description
1	323-57	4	Screw-HH
2	71-3690	4	Spade-Bent
3	61-0420-01	4	Support-HOC
4	3296-39	16	Nut-Lock, NI
5	3290-467	4	Pin-Cotter, Hair
6	3231-25	4	Screw-CARR
7	14-4489	2	Front HOC Bracket and Bushing ASM
7:2	56-9510	2	Bushing ASM
8	323-6	8	Screw-HH
9	56-9520	2	Bushing-Flanged
11	61-0910	4	Bracket-Angle
12	61-0410	1	Roller Assembly
12:1	71-3590	2	Nut-Adjustment
12:2	253-153	2	Seal-Oil
12:3	254-78	2	Cone-Bearing
12:4	254-79	2	Bearing-Roller, Cup
12:5	253-152	2	Seal-Oil
12:6	61-0400	1	Shaft-Roller
12:8	61-0380-01	1	Cap-End, Roller
12:9	302-5	2	Fitting-Lube
13	14-4479	2	Rear HOC Bracket And Bushing ASM
13:1	56-9510	2	Bushing ASM
14	3290-55	8	Rivet-Pop
15	61-3800	2	Plate-Rear

Ref. No.	Part No.	Qty.	Description
16	61-3790	2	Plate-HOC, Front
25	3256-38	2	Washer-flat

