



Air Cleaner Kit For Out Front Z

Part No. 100-2402 (For 20 HP Kohler® Command Pro™ Engine)

Part No. 100-2403 (For 23 HP Kohler® Command Pro™ Engine)

Part No. 100-2404 (For 25 HP Kohler® Command Pro™ Engine)

Parts Catalog

Ordering Replacement Parts

To order replacement parts, please supply: the part number, the quantity, and the description of each part desired.

Understanding Reference Numbers

Each identified part in an illustration has a reference number. The reference number for a part also appears in the parts list, along with other information about the part.

This catalog uses two special reference number formats, one to indicate parts in a service assembly and another to indicate the quantity of a given part in an illustration.

Service Assembly Reference Numbers

Parts in service assemblies have reference numbers in the form **a:b**. The **a** represents the reference number of the entire service assembly and the **b** represents a sequential number unique to each part within the service assembly.

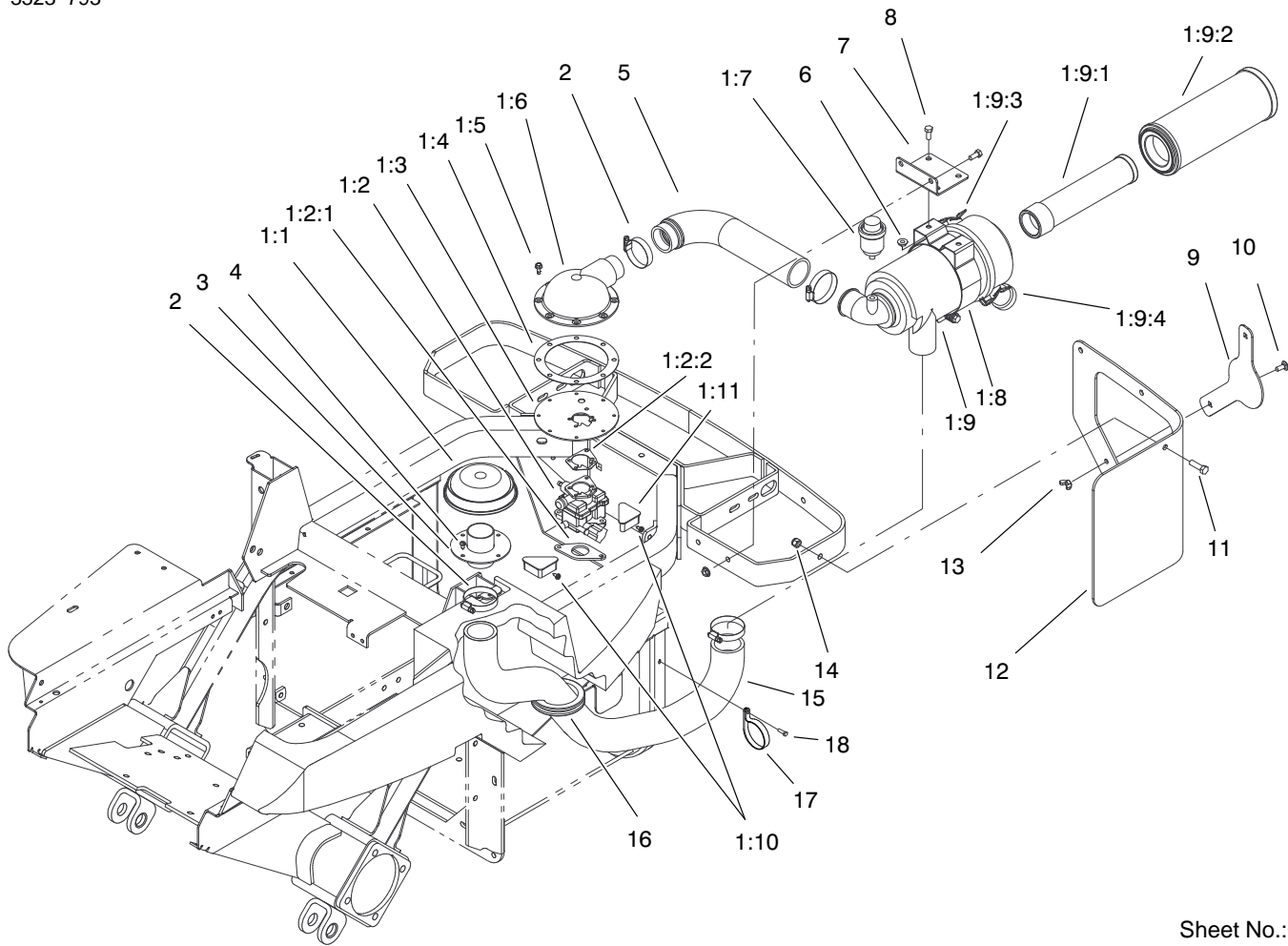
For example, a wheel assembly might be identified by reference number **6**, the tire by **6:1**, the valve by **6:2**, and the wheel by **6:3**. When you order the assembly identified by reference number **6**, you receive all parts identified by reference numbers **6:1**, **6:2**, and **6:3**. However, you may also order any part individually.

Reference numbers of this type appear in illustrations and in part lists.

Reference Numbers Indicating Quantity

In an illustration, if a reference number indicates more than one part, the reference number has the form **nX y**. The **n** represents the quantity of the part, the **X** is the multiplication symbol, and the **y** represents the reference number.

For example, in an illustration, the reference number **2X 37** means that two of the parts identified by reference number **37** are indicated.



Sheet No.:0

Air Cleaner Kit

Ref. No.	Part No.	Qty.	Description
*1:1	25 324 02	1	Hood
*1:2	24 853 75	1	Carburetor Kit (only on:100-2402)
*1:2	24 853 76	1	Carburetor Kit (only on:100-2403)
*1:2	24 853 77	1	Carburetor Kit (only on:100-2404)
*1:2:1	24 041 17	1	Gasket
*1:2:2	24 041 06	1	Gasket
*1:3	24 029 35	1	Plate – Adapter
*1:4	24 041 38	1	Gasket
*1:5	M-0645016	7	Screw
*1:6	24 029 28	1	Adapter
1:7	99-4664	1	Filter Minder
*1:8	25 126 02	1	Bracket – A/C
*1:9	25 048 07	1	Air Cleaner
*1:9:1	25 083 04	1	Filter – Safety
*1:9:2	25 083 01	1	Element A/C
1:9:3	99-3174	2	Clip – Air Cleaner
1:9:4	99-3175	1	Valve – Dust Ejector
*1:10	X-67-3	2	Screw
*1:11	24 096 17	2	Plug
2	2412-130	4	Hose Clamp
3	100-2411-03	1	Flanged Connector ASM
4	32104-111	4	Screw

Ref. No.	Part No.	Qty.	Description
5	100-2406	1	Hose
6	32128-13	4	Nut-Hex Flange
7	100-2412-03	1	Bracket
8	322-3	4	Screw-HH
9	100-2421-03	1	Plate – Cover
10	3230-23	1	Screw-CARR
11	322-6	3	Screw-HH
12	100-2418-03	1	Guard
13	32103-29	1	5/16-18 Type A Wing Nut
14	3296-29	3	Nut-Lock NI
15	100-2405	1	Hose
16	240-8	1	Rubber Grommet
17	2412-102	1	R-Clamp
18	32144-14	1	Screw

* Obtain From Kohler