



Storage Box Kit

Groundsmaster® 3200 or 3300 Series Traction Unit

Model No. 31983

Installation Instructions

Installation

Loose Parts

Use the chart below to verify that all parts have been shipped.

Description	Qty.	Use
No parts required	—	Prepare the machine.
Base plate	1	Install the kit.
Short side plate	1	
Tall side plate	1	
End plate	2	
Carriage bolt (#10 x 1/2 inch)	12	
Locknut (#10)	12	

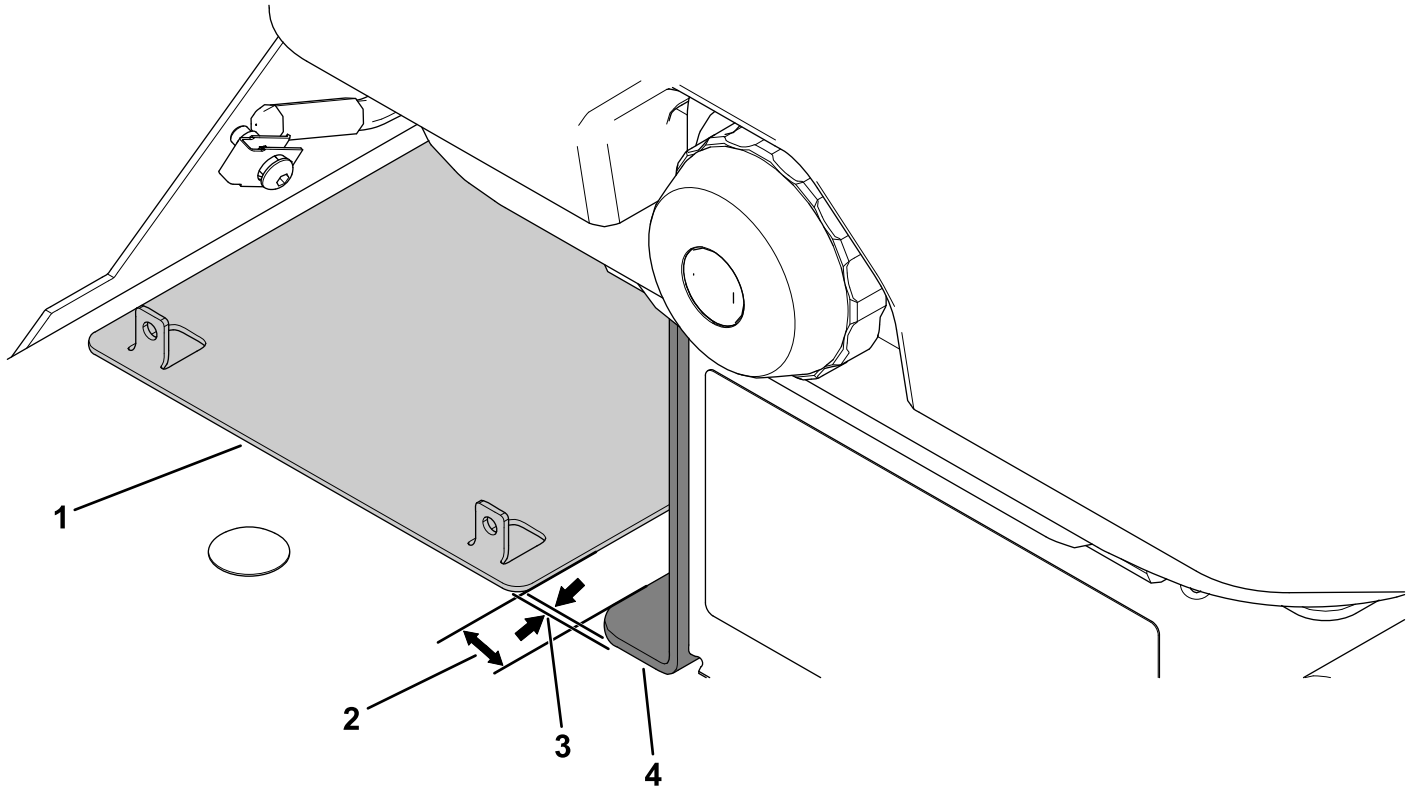
Preparing the Machine

1. Park the machine on a level surface.
2. Engage the parking brake.
3. Lower the cutting unit.
4. Shut off the engine and remove the key.



Installing the Kit

1. Using the dimensions shown in [Figure 1](#), place the base plate on the platform and align it to the seat base.

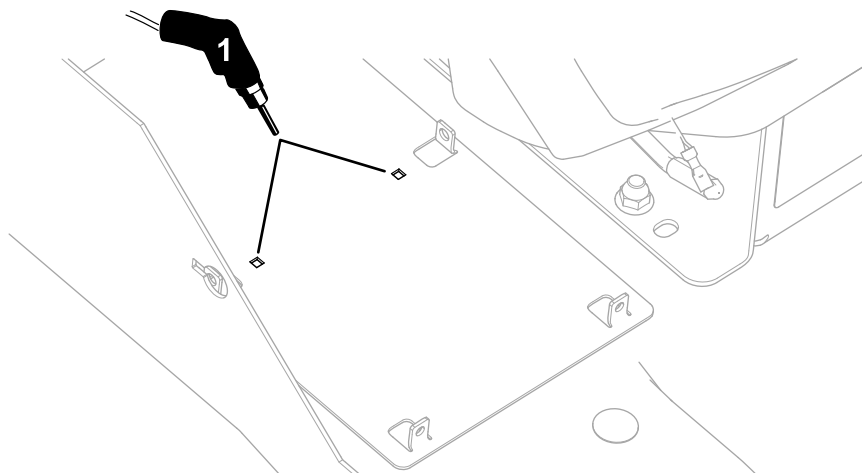


g307673

Figure 1

- | | |
|-----------------------|----------------------|
| 1. Base plate | 3. 6.4 mm (1/4 inch) |
| 2. 22.6 mm (7/8 inch) | 4. Seat base |

2. Using the base plate as the template, drill 2 holes (1/4 inch) into the platform as shown in [Figure 2](#).

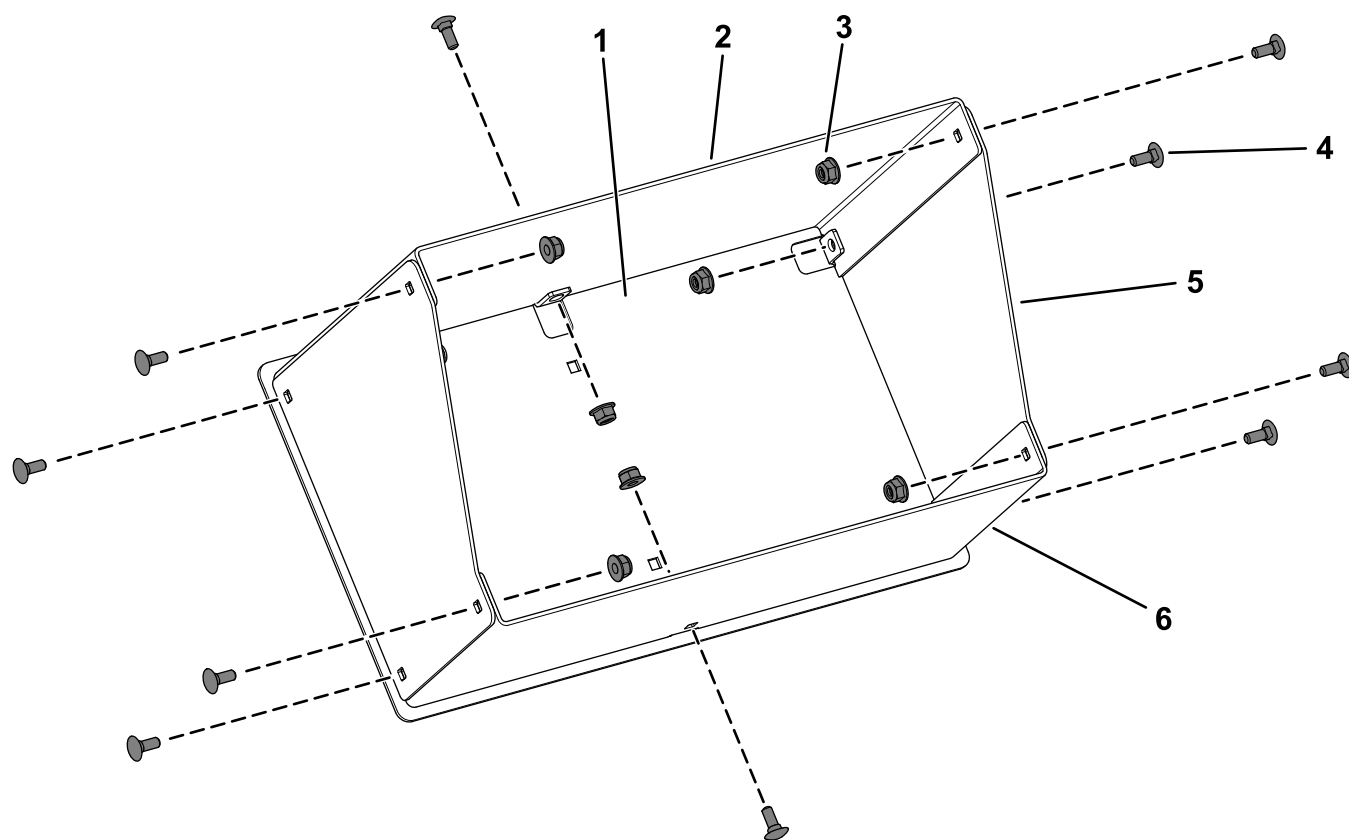


g307014

Figure 2

1. Drill 2 holes (1/4 inch) here.

3. Secure the base plate, short side plate, tall side plate, and 2 end plates using 10 carriage bolts (#10 x 1/2 inch) and 10 locknuts (#10) as shown in [Figure 3](#).

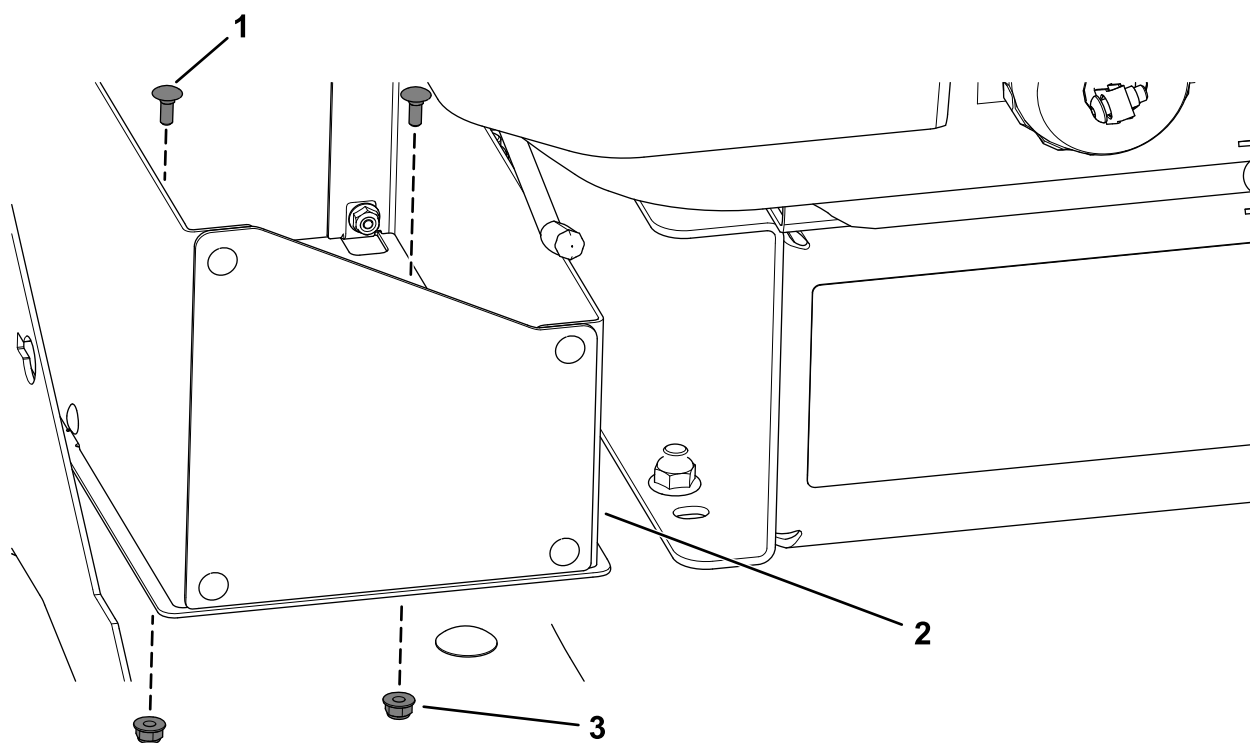


g306980

Figure 3

- | | |
|--------------------|-----------------------------------|
| 1. Base plate | 4. Carriage bolt (#10 x 1/2 inch) |
| 2. Tall side plate | 5. End plate |
| 3. Locknut (#10) | 6. Short side plate |

4. Secure the assembled storage box to the platform using 2 carriage bolts (#10 x 1/2 inch) and 2 locknuts (#10) as shown in [Figure 4](#).



g307016

Figure 4

- | | |
|-----------------------------------|------------------|
| 1. Carriage bolt (#10 x 1/2 inch) | 3. Locknut (#10) |
| 2. Storage box | |