



**Proline 12.5HP**  
**Mid-Size Traction Unit**  
Model No. 30165-20000001 and Up

## Parts Catalog

### Ordering Replacement Parts

To order replacement parts, please supply: the part number, the quantity, and the description of each part desired.

### Understanding Reference Numbers

Each identified part in an illustration has a reference number. The reference number for a part also appears in the parts list, along with other information about the part.

This catalog uses two special reference number formats, one to indicate parts in a service assembly and another to indicate the quantity of a given part in an illustration.

### Service Assembly Reference Numbers

Parts in service assemblies have reference numbers in the form **a:b**. The **a** represents the reference number of the entire service assembly and the **b** represents a sequential number unique to each part within the service assembly.

For example, a wheel assembly might be identified by reference number **6**, the tire by **6:1**, the valve by **6:2**, and the wheel by **6:3**. When you order the assembly identified by reference number **6**, you receive all parts identified by reference numbers **6:1**, **6:2**, and **6:3**. However, you may also order any part individually.

Reference numbers of this type appear in illustrations and in part lists.

### Reference Numbers Indicating Quantity

In an illustration, if a reference number indicates more than one part, the reference number has the form **nX y**. The **n** represents the quantity of the part, the **X** is the multiplication symbol, and the **y** represents the reference number.

For example, in an illustration, the reference number **2X 37** means that two of the parts identified by reference number **37** are indicated.

## Contents

Description	Page	Description	Page
Fuel Tank & Idler Bracket Assembly . . . . .	3	Clutch Assembly . . . . .	9
Transmission & Idler Pulley Assembly . . . . .	4	Engine Assembly . . . . .	10-20
Brake, Pulley & Wheel Assembly . . . . .	5	Schematic . . . . .	21
Wheel Assembly . . . . .	6	Transmission . . . . .	22
Handle & Control Panel Assembly . . . . .	7	Maintenace . . . . .	23
Engine, Clutch & Muffler Guard Assembly . . . . .	8		

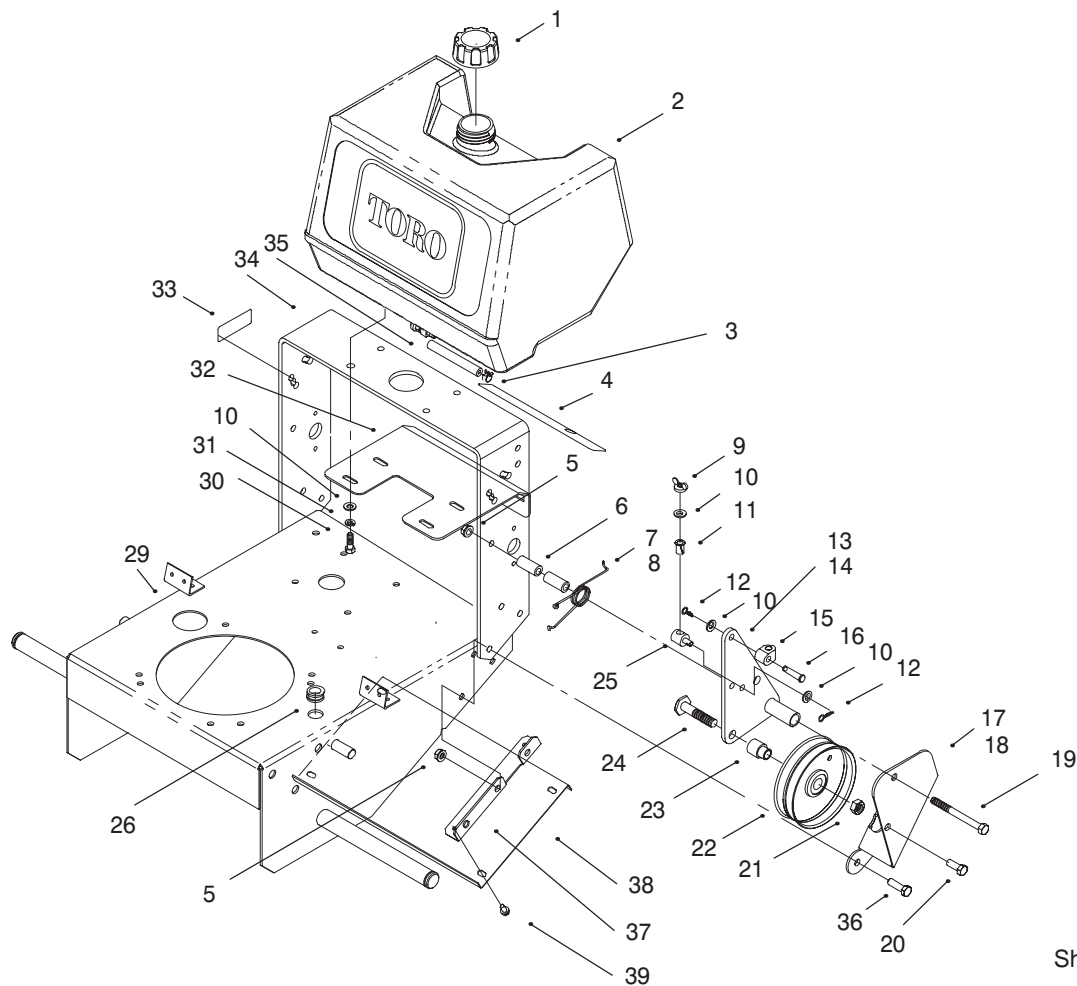
## Accessories

Description	Model / Part No.	Description	Model / Part No.
36" Cutting Unit . . . . .	Model No. 30138	Bagging Kit (For 37" Deck)	
37" Recycler Deck . . . . .	Model No. 30139	(Cloth Bag . . . . .	Model No. 30129
44" Cutting Unit . . . . .	Model No. 30145	Bagging Kit	
Bagging Kit (For 36" Deck) . . . . .	Model No. 30125	(For 44"/52" Decks) . . . . .	Model No. 30128)

## Part Description Abbreviations

Part descriptions in this catalog may include the following abbreviations.

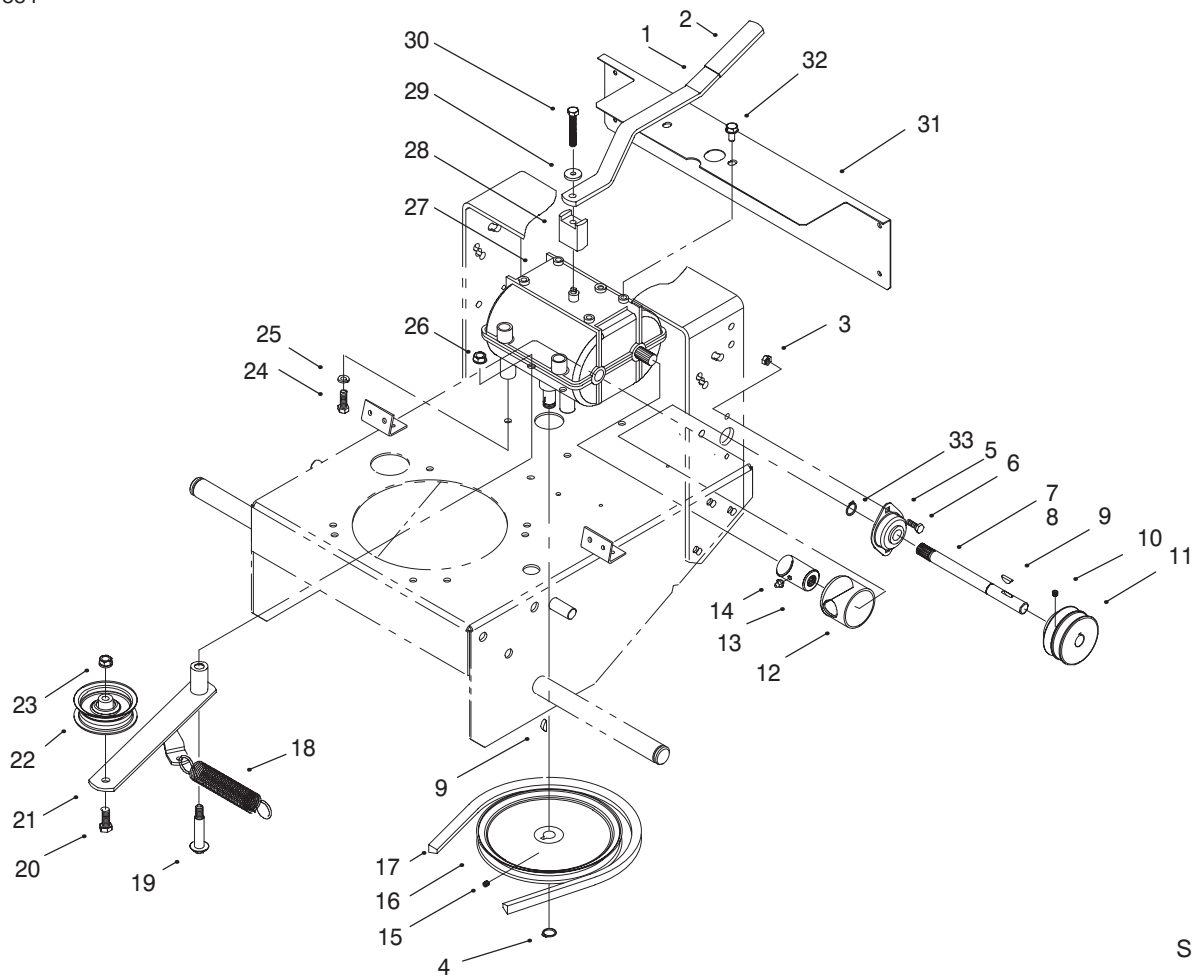
Abbreviation	Meaning	Abbreviation	Meaning
AR . . . . .	as required	INC . . . . .	incorporated
ASM . . . . .	assembly	LH . . . . .	left hand
CARR . . . . .	carriage	NI . . . . .	nylon insert
DEG . . . . .	degrees	PPH . . . . .	Phillips pan head
FH . . . . .	flat head	PTH . . . . .	Phillips truss head
GA . . . . .	gauge	PTO . . . . .	power take off
HF . . . . .	hex flange	RH . . . . .	right hand
HH . . . . .	hex head	SFH . . . . .	slotted fillister head
HHF . . . . .	hex head flange	SHH . . . . .	slotted hex head
HLH . . . . .	hex lag head	SQH . . . . .	square head
HJ . . . . .	hex jam	SHWH . . . . .	slotted hex washer head
HOC . . . . .	height-of-cut	SPH . . . . .	slotted pan head
HS . . . . .	hex socket	SRH . . . . .	slotted round head
HSBH . . . . .	hex socket button head	STD . . . . .	standard
HSFH . . . . .	hex socket flat head	TAP . . . . .	self tapping
HSH . . . . .	hex socket head	TTH . . . . .	Torx truss head
HWH . . . . .	hex washer head	WH . . . . .	wing head
HWHTF . . . . .	hex washer head thread forming		



Sheet No.:2

## Fuel Tank & Idler Bracket Assembly

Ref. No.	Part No.	Qty.	Description	Ref. No.	Part No.	Qty.	Description
1	55-3570	1	Gas Cap Assembly	29	93-7438-01	1	Frame Wa
2	95-2802	1	Tank - Fuel	30	322-4	4	Screw-HH
3	2412-98	2	Clamp	31	3253-4	4	Washer
4	93-7297	1	Decal - Ground Speed	32	66-7400-01	1	Plate-Control
5	3296-39	6	Nut-Lock, NI	33	93-9353	1	Decal - Fuel Shut Off
6	74-0040	4	Spacer-Idler Pivot	34	74-0360-01	1	Frame-Rear
7	51-4370	1	Spring-RH Torsion	35	47-2982	1	Gas Hose
8	51-4380	1	Spring-LH Torsion	36	323-7	4	Screw-HH
9	32103-25	2	Nut-Wing	37	93-7436-03	2	Angle - Mounting
10	3256-23	10	Washer-Flat	38	93-7437-01	1	Panel - Bottom
11	52-2890	2	Bushing-Nylon	39	12-3270	4	Screw
12	3290-307	4	Hairpin				
13	74-0230-01	1	Bracket-RH Idler				
14	74-0220-01	1	Bracket-LH Idler				
15	74-0521	2	Fitting-Rod				
16	283-6	2	Pin-Clevis				
17	67-6370-01	1	Bracket-RH Support				
18	67-6380-01	1	Bracket-LH Support				
19	323-16	2	Screw-HH				
20	323-6	2	Screw-HH				
21	3296-23	2	Nut-Lock, NI				
22	95-2800	2	Pulley - Idler				
23	95-2801	2	Spacer - Pulley				
24	51-4450	2	Screw-Leveler				
25	68-9690	2	Fitting-Rod				
26	237-124	1	Grommet				



Sheet No.:3

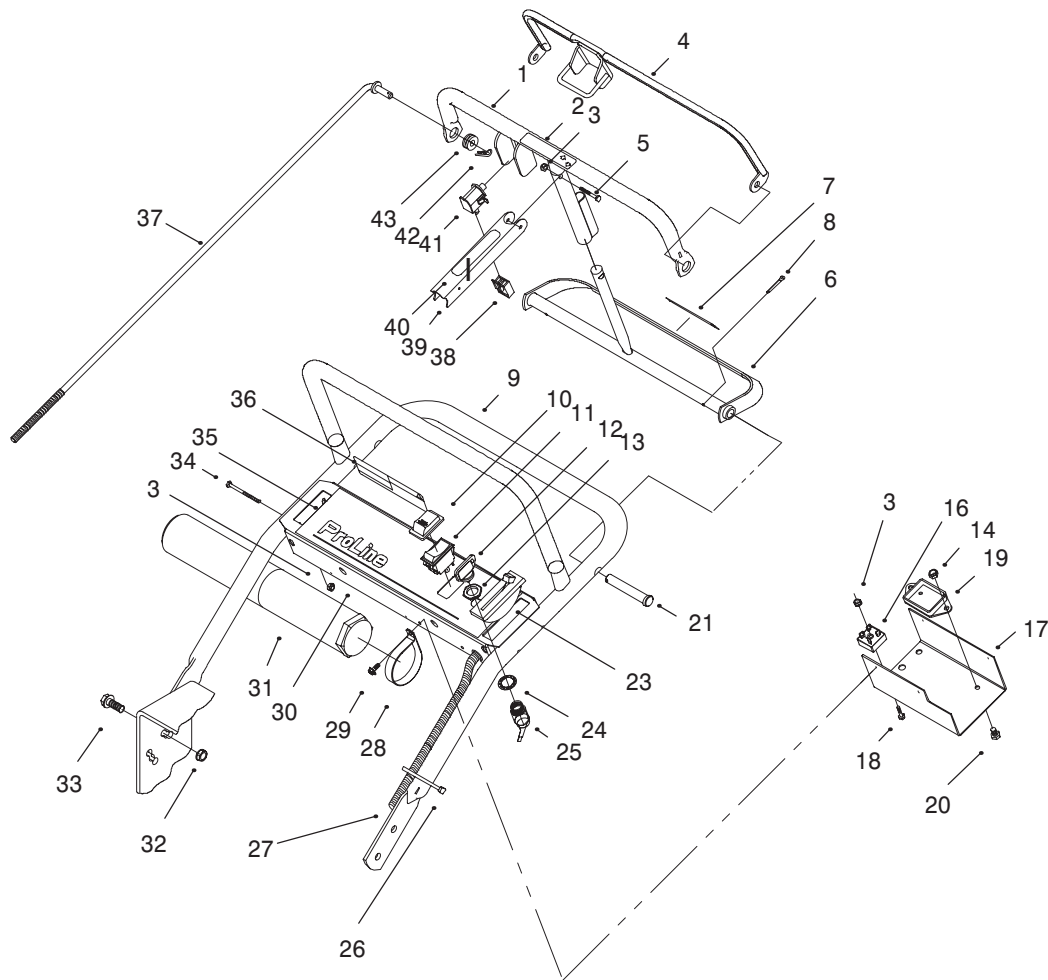
## Transmission & Idler Pulley Assembly

Ref. No.	Part No.	Qty.	Description
1	74-0320-01	1	Lever-Shift
2	47-1970	1	Grip-Engagement
3	3296-42	4	Nut-Lock
4	32120-64	1	Ring-External Snap
5	51-4270	2	Bearing-External Shaft
6	321-4	4	Screw-HH
7	98-0788	1	Shaft - Extension, RH
8	98-0787	1	Shaft - Extension, LH
9	3257-5	3	Key-Woodruff
10	3245-3	2	Screw-Hex Socket Set
11	74-0480	2	Drive Pulley Assembly
12	51-4220	2	Guard-Coupler
13	98-0789	2	Coupler
14	302-5	2	Fitting-Lube
15	3245-1	1	Screw-Set, HSH
16	51-4190	1	Pulley-Driven
17	26-9671	1	V-Belt
18	68-2190	1	Spring-Extension
19	27-6230	1	Bolt-Wheel
20	323-8	1	Screw-HH
21	16-7509	1	Lever-Idler w/Bushings
22	62-4540	1	Pulley
23	3296-39	1	Nut-Lock, NI

Ref. No.	Part No.	Qty.	Description
24	322-2	4	Screw-HH
25	3253-4	4	Washer
26	3296-6	1	Nut-Lock, NI
27	98-0791	1	Transmission
28	72-2190	1	Mount-Shift Lever
29	7-5461	1	Spacer
30	329-10	1	Screw-HH
31	93-7431-03	1	Guard - Trans Shaft
32	32144-14	2	Screw-HWH
33	32151-52	2	Ring - Int 1.25 Hsg







Sheet No.:5

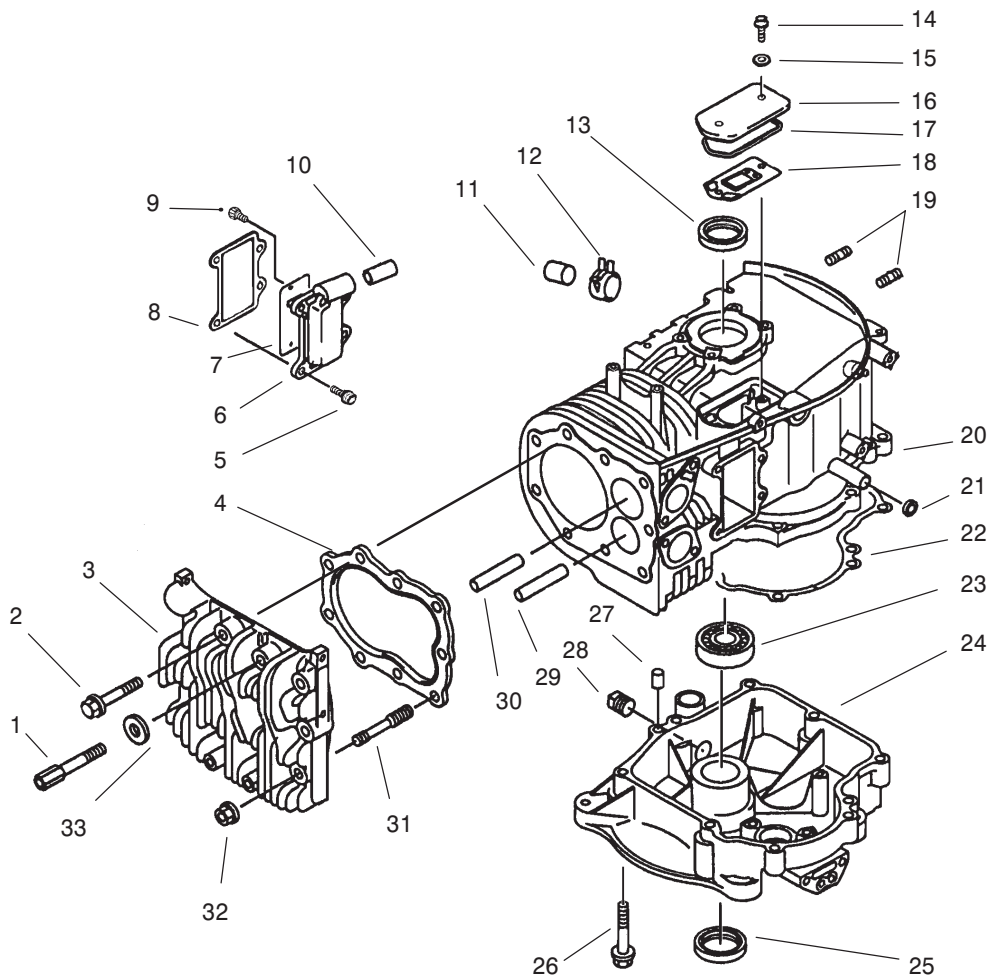
## Handle & Control Panel Assembly

Ref. No.	Part No.	Qty.	Description
1	82-7690-03	1	Bar-Control
2	93-7298	1	Decal - Control Bar
3	3296-2	6	Nut-Lock
4	82-7680-03	1	Bail Wa
5	32105-1	1	Screw-Srh
6	99-8501-03	1	Control-Pivot
7	93-7299	1	Decal - Reverse
8	3272-11	2	Pin-Cotter
9	67-6440-01	1	Handle-Upper
10	82-3820	1	Boot-Switch
11	82-2300	1	Switch
12	63-8360	2	Key-Ignition
13	218-461	1	Nut-HH
14	3296-42	1	Nut-Lock
16	37-7600	1	Bridge Rectifier
17	93-1187-03	1	Panel - Bottom
18	32105-13	1	Screw-Shh
19	100-6170	1	Module- Delay
20	321-2	1	Screw-HH
21	283-55	2	Pin-Clevis
23	74-0740	1	Throttle Control
24	3254-5	1	Washer-Lock/Int
25	29-5560	1	Switch-On Off
26	3290-378	2	Tie-Cable
27	100-6459	1	Harness- Wire,Recoil
28	2412-120	2	R-Clamp

Ref. No.	Part No.	Qty.	Description
29	32104-76	4	Screw-Slot, Acorn
30	82-2180-03	1	Panel-Control
31	74-0720	1	Tube-Manual
32	32128-21	4	Nut-HF
33	3234-11	4	Screw-HHF
34	32105-14	4	Screw-Slotted Hd
35	93-7295	1	Decal - Panel
36	93-6657	1	Decal - Danger
37	82-7631	2	Rod-Control
38	218-595	1	Connector-Body
39	51-4850-03	1	Lever-Parking Brake
40	93-7442	1	Decal - Parking Lever
41	82-2190	1	Switch-Bail
42	3290-307	2	Hairpin
43	237-141	2	Grommet-Rubber





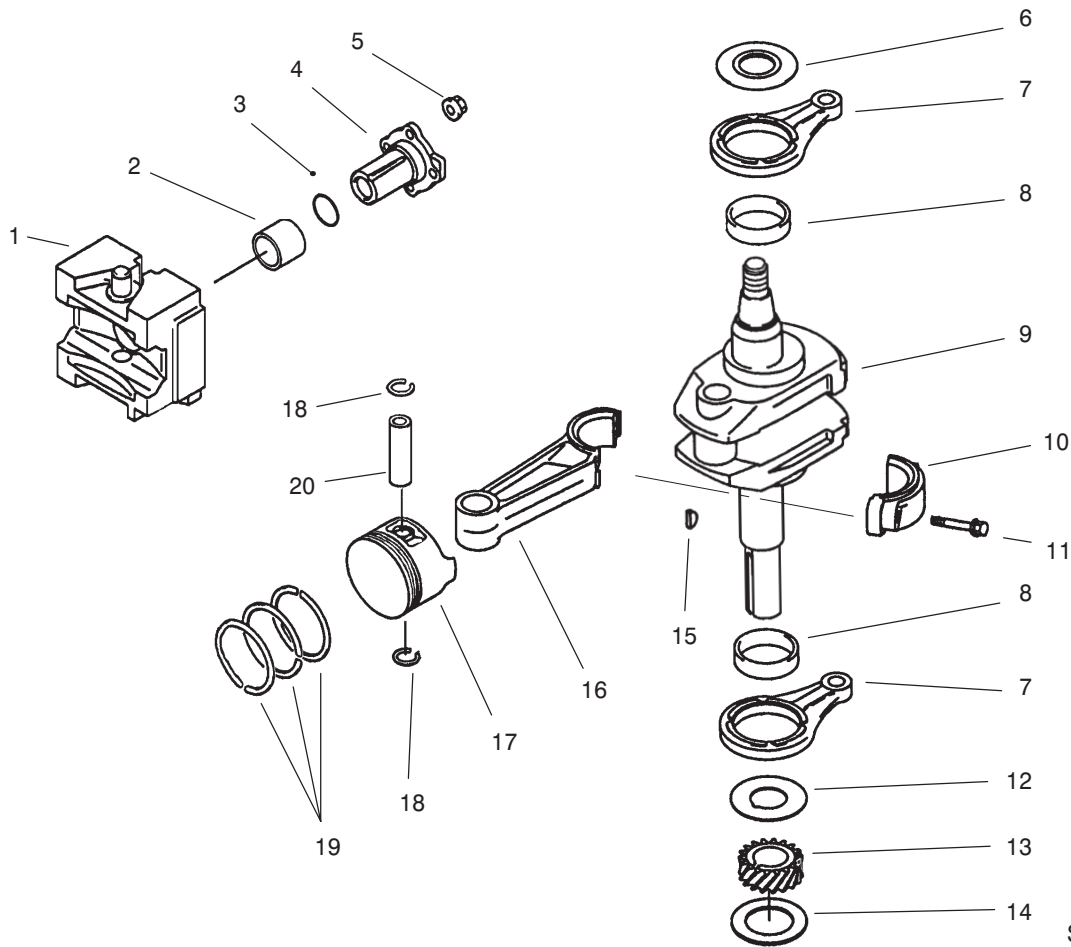


Sheet No.: 201

### Crankcase

Ref. No.	Part No.	Qty.	Description
1	92002-2258	2	Bolt
2	130g1055	4	Bolt-Flange
3	11001-2151	1	Head-Cylinder
4	11004-2091	1	Gasket-Head
5	130g0616	4	Bolt-Flange
6	49108-2011	1	Cover-Valve Chamber
7	14025-2143	1	Cover
8	11060-2059	1	Gasket
9	92009-2307	2	Screw
10	92059-2142	1	Tube
11	92066-2096	1	Plug
12	92170-2088	1	Clamp
13	92049-2096	1	Seal-Oil
14	92002-2087	2	Bolt
15	11060-2323	2	Gasket
16	14025-2040	1	Cover-Breather
17	11009-2339	1	Gasket-Cover
18	14069-2062	1	Breather
19	92004-2083	4	Stud-6 X 14
20	49120-6108	1	Crankcase-Complete
21	92049-2097	1	Seal-Oil
22	11060-2015	1	Gasket-Crankcase
23	601a6207	1	Bearing-Ball
24	49015-6176	1	Cover-Crankcase
25	92049-2227	1	Seal-Oil
26	130g0845	8	Bolt-Flange

Ref. No.	Part No.	Qty.	Description
27	92043-1263	2	Pin
28	92066-2097	1	Plug
29	49002-2071	1	Guide-Valve Exhaust
30	49002-2070	1	Guide-Valve Intake
31	92004-2082	3	Stud
32	92015-2115	3	Nut
33	410b1000	2	Washer-Plain



Sheet No.: 202

### Piston / Crankshaft

Ref. No.	Part No.	Qty.	Description
1	13042-6006	1	Weight Incl #2
2	92141-2097	1	Bearing-Plane
3	92055-2072	1	O-Ring
4	13107-2253	1	Shaft
5	92015-1193	4	Nut
6	92026-2164	1	Spacer
7	46102-6007	2	Rod Incl #8
8	92141-2108	2	Bearing-Plane
9	49119-2177	1	Crankshaft ASM
11	92050-2193	2	Bolt
12	92026-2156	1	Spacer
13	59056-2105	1	Gear-Helical
14	92025-2145	A/R	Shim T=1.18
14	92025-2146	A/R	Shim T=1.25
14	92025-2147	A/R	Shim T=1.32
14	92025-2148	A/R	Shim T=1.39
14	92025-2149	A/R	Shim T=1.46
14	92025-2150	A/R	Shim T=1.53
14	92025-2151	A/R	Shim T=1.60
14	92025-2152	A/R	Shim T=1.67
14	92025-2153	A/R	Shim T=1.74
14	92180-2015	A/R	Shim T=1.11
14	92180-2016	A/R	Shim T=1.81
15	92038-2094	1	Key
16	13251-6005	1	Rod ASM Incl #10 11

Ref. No.	Part No.	Qty.	Description
16	13251-6007	A/R	Rod ASM Incl #10 11 0.50
17	13001-2084	1	Piston
17	13029-2019	A/R	Piston 0.25
17	13029-2020	A/R	Piston 0.50
18	92033-2066	2	Ring-Snap
19	13008-6001	1	Set-Ring Piston
19	13008-6002	A/R	Set-Ring Piston 0.25
19	13008-6003	A/R	Set-Ring Piston 0.50
20	13002-2066	1	Pin-Piston

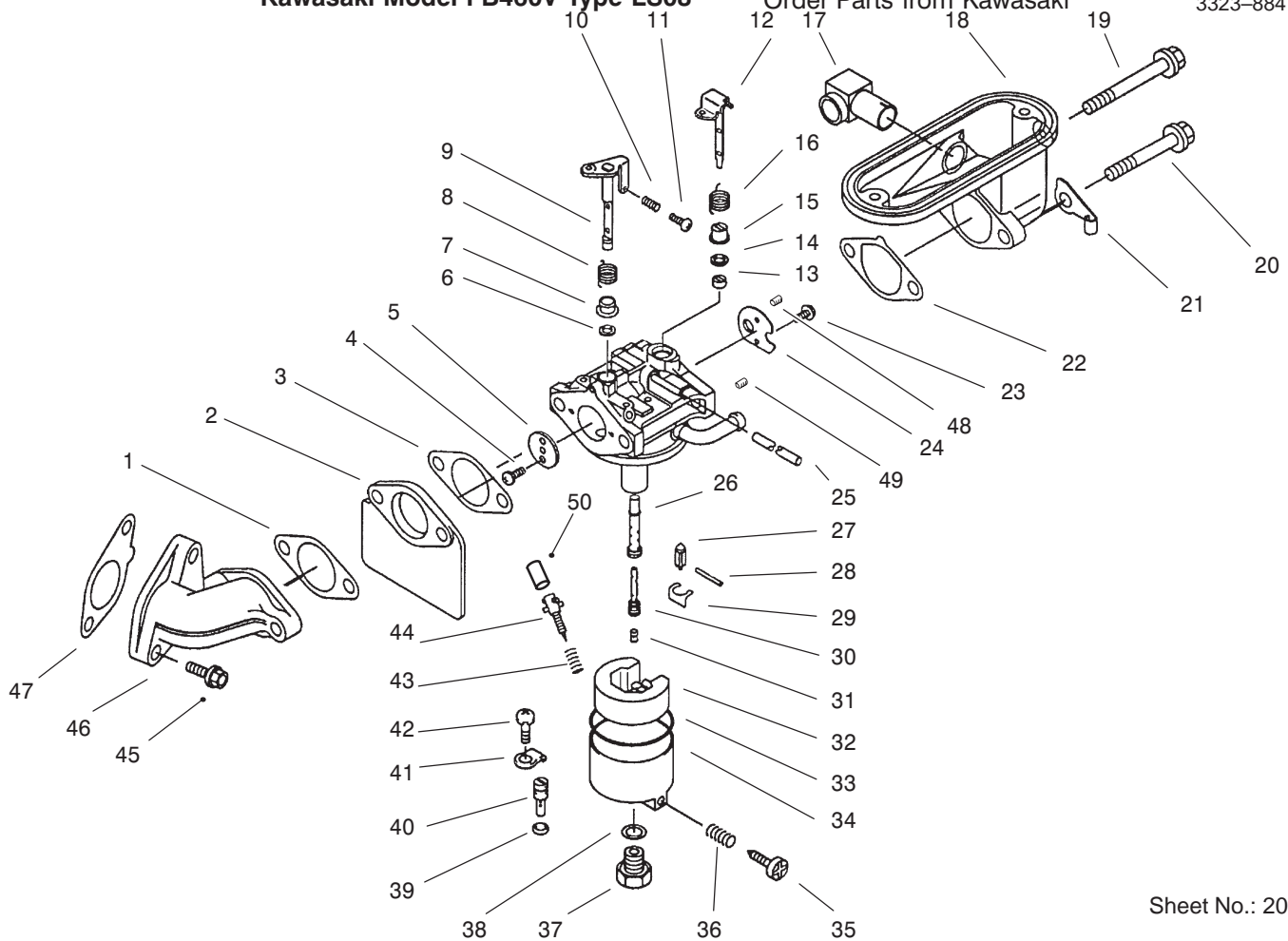












Sheet No.: 208

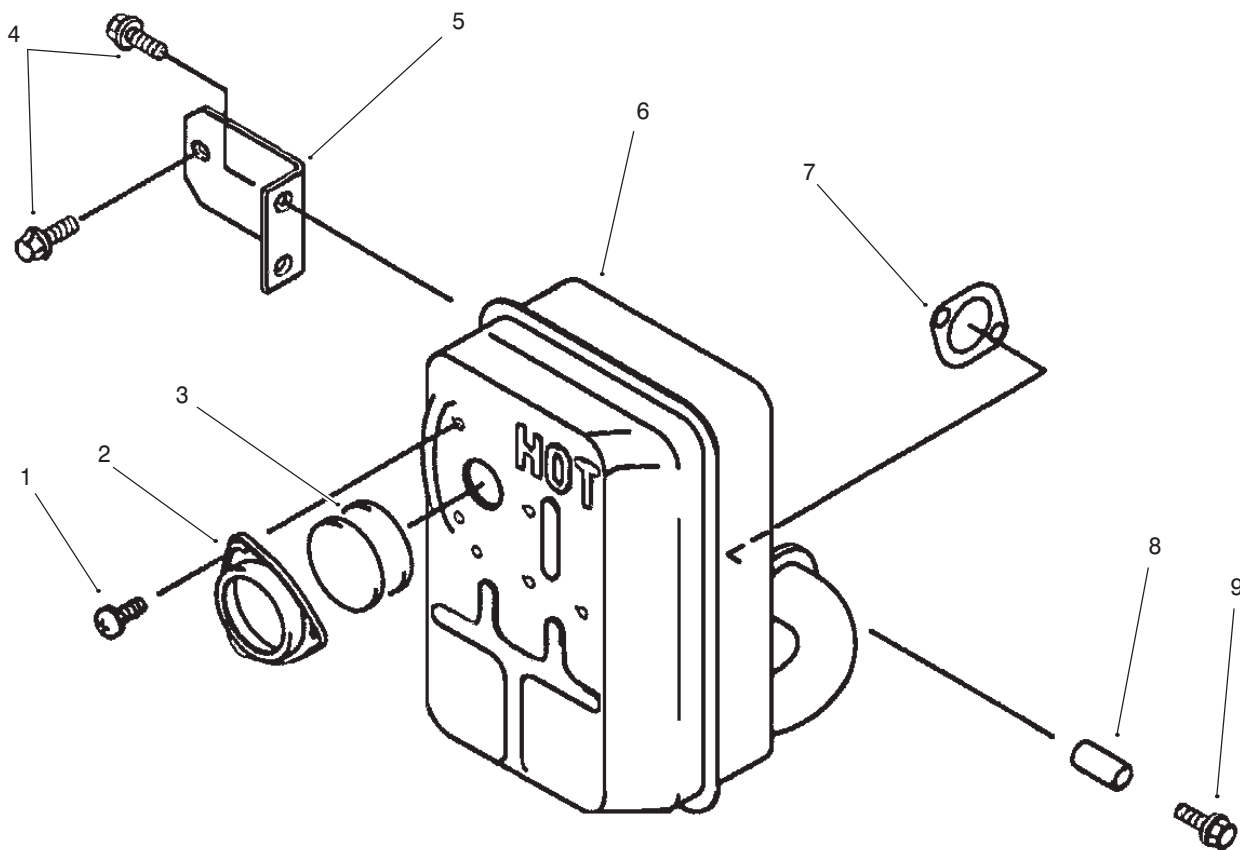
### Carburetor

Ref. No.	Part No.	Qty.	Description
0	15003-2467	1	Carburetor ASM
1	11060-2338	1	Gasket-Intake Pipe
2	16073-2091	1	Insulator
3	11060-2339	2	Gasket-Carburetor
4	92009-2080	2	Screw
5	16025-2141	1	Valve-Throttle #110
6	92093-2082	1	Seal
7	92027-2025	1	Collar
8	92081-2077	1	Spring
9	16041-2009	1	Shaft-Throttle
10	92081-2046	1	Spring
11	92009-2079	1	Screw
12	16041-2010	1	Shaft-Choke
13	92027-2003	1	Collar
14	92093-2069	1	Seal
15	92143-2142	1	Collar
16	92144-2160	1	Spring
17	59071-2062	1	Joint
18	16060-2108	1	Pipe-Intake
19	92002-2254	1	Bolt
20	92002-2253	1	Bolt
21	92170-2019	1	Clamp
22	11009-2025	1	Gasket
23	92009-2081	2	Screw
24	16126-2206	1	Valve-Choke
25	92059-2266	1	Tube

Ref. No.	Part No.	Qty.	Description
26	49121-2207	1	Nozzle-Main
27	16030-2073	1	Valve-Float
28	92043-2006	1	Pin
29	92033-2067	1	Ring-Snap
30	49123-2078	1	Holder-Main Jet
31	92063-2294	1	Jet-Main
32	16031-2066	1	Float
33	11009-2024	1	Gasket
34	16020-2109	1	Chamber-Float Incl 35 36
35	92009-2015	1	Screw
36	92081-2009	1	Spring
37	92150-2146	1	Bolt
38	1100a-2025	1	Gasket
39	16038-024	1	Gasket
40	92064-2108	1	Jet-Pilot
41	13183-2252	1	Plate
42	92009-2244	1	Screw
43	92081-2008	1	Spring
44	16014-2076	1	Screw-Pilot Air
45	130g0825	2	Bolt-Flange
46	16060-2109	1	Pipe-Intake
47	11060-2337	1	Gasket-Intake Pipe
48	16035-2063	1	Jet-Air #0.9
49	16035-2051	1	Jet-Air #1.4
50	39076-2053	1	Limiter







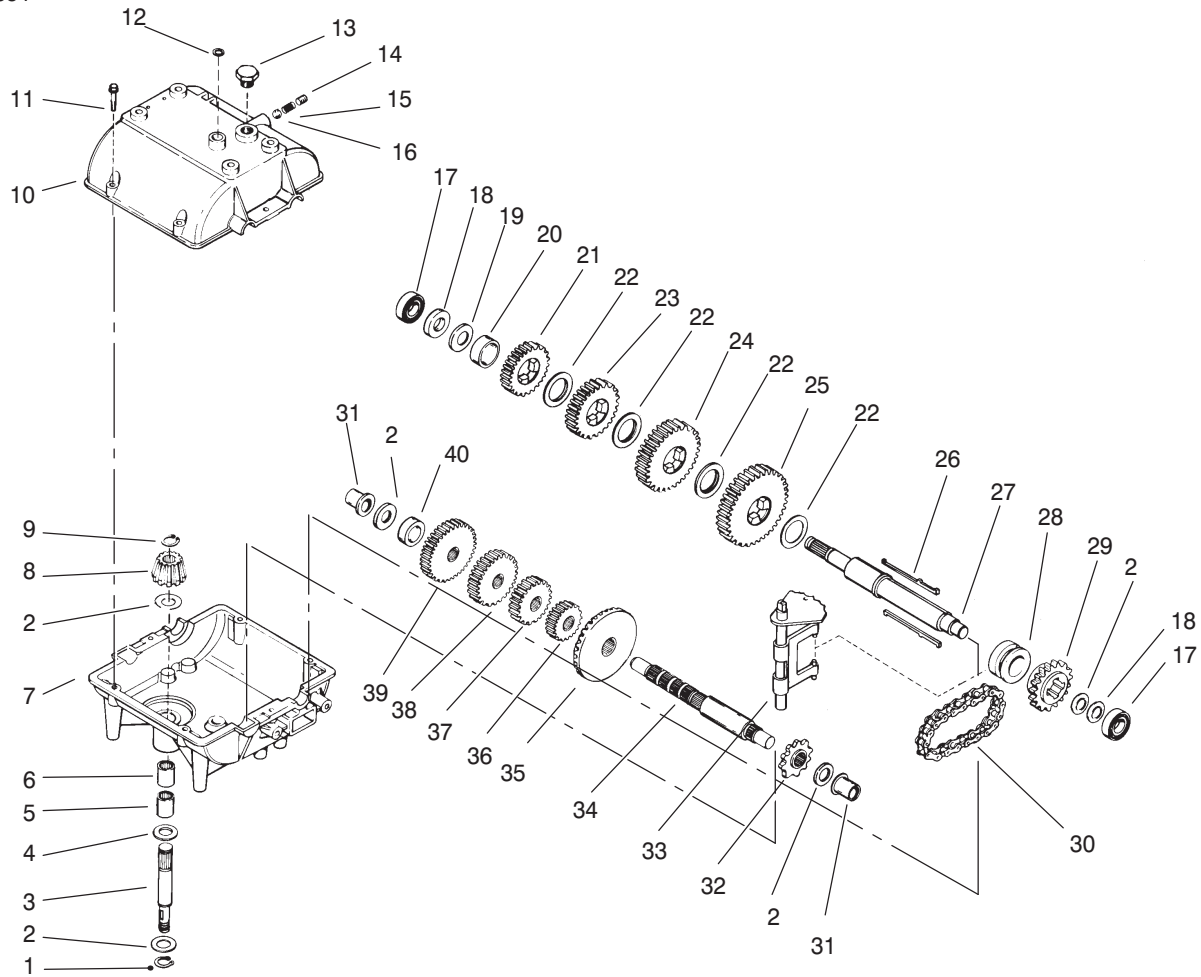
Sheet No.: 211

### Muffler

Ref. No.	Part No.	Qty.	Description
1	92009-2166	2	Screw
2	11012-2165-9Y	1	Cap-Spark Arrestor
3	18077-2054	2	Arrestor-Spark
4	130b0812	4	Bolt-Flange
5	11044-2069-9Y	1	Bracket
6	49069-2190-9Y	1	Muffler ASM
7	11009-2527	1	Gasket-Muffler
8	92027-2081	1	Collar
9	130g0845	1	Bolt-Flange

Ref. No.	Part No.	Qty.	Description





## Peerless Transmission Model 700-082

Ref. No.	Part No.	Qty.	Description
1	792035	1	Ring – Retaining
2	780072	5	Washer – Thrust
3	776135	1	Shaft – Input
4	792001	2	"O"Ring
5	780142	1	Bearing – Needle
6	780086A	1	Bearing – Needle
7	770090A	1	Case – Transmission
8	778153	1	Bevel Pinion – Input
9	788040	1	Ring – Retaining
10	772099A	1	Cover – Transmission
11	792073A	6	Screw – Self Tapping
12	788069	1	Seal – Square Cut
13	792074	1	Plug – Threaded
14	792078	1	Screw – Set
15	792079	1	Spring
16	792077A	1	Ball – Steel
17	780092	2	Bearing – Ball
18	780065	2	Washer – Thrust
19	780139	1	Washer – Thrust
20	786072	1	Spacer
21	778123A	1	Gear – Spur (25 Teeth)
22	780108	4	Washer – Thrust
23	778250	1	Gear – Spur (27 Teeth)
24	778124A	1	Gear – Spur (30 Teeth)
25	778125	1	Gear – Spur (35 Teeth)
26	792089A	4	Key

Ref. No.	Part No.	Qty.	Description
27	776421	1	Shaft – Shifter & Brake
28	784266	1	Collar – Shift
29	786083	1	Sprocket (18 Teeth)
30	786081	1	Chain – Roller (No. 41 Chain 24 Links)
31	780105A	2	Bushing – Flanged
32	786082	1	Sprocket (9 Teeth)
33	784267	1	Rod & Fork Asm – Shift
34	776134	1	Shaft – Counter
35	778154	1	Gear – Bevel (42Teeth)
36	778136	1	Gear – Spur (15 Teeth)
37	778126A	1	Gear – Spur (20 Teeth)
38	778249	1	Gear – Spur (23 Teeth)
39	778127A	1	Gear – Spur (25 Teeth)
40	786071	1	Spacer
*	788067B	1	Grease 32oz Bottle
*	510334	1	Grease Eliminator

\*Not Illustrated

Order Parts from Peerless



