



Proline 15 HP
Hydro Mid-Size Traction Unit
Model No. 30187-20000001 and Up

Parts Catalog

Ordering Replacement Parts

To order replacement parts, please supply: the part number, the quantity, and the description of each part desired.

Understanding Reference Numbers

Each identified part in an illustration has a reference number. The reference number for a part also appears in the parts list, along with other information about the part.

This catalog uses two special reference number formats, one to indicate parts in a service assembly and another to indicate the quantity of a given part in an illustration.

Service Assembly Reference Numbers

Parts in service assemblies have reference numbers in the form **a:b**. The **a** represents the reference number of the entire service assembly and the **b** represents a sequential number unique to each part within the service assembly.

For example, a wheel assembly might be identified by reference number **6**, the tire by **6:1**, the valve by **6:2**, and the wheel by **6:3**. When you order the assembly identified by reference number **6**, you receive all parts identified by reference numbers **6:1**, **6:2**, and **6:3**. However, you may also order any part individually.

Reference numbers of this type appear in illustrations and in part lists.

Reference Numbers Indicating Quantity

In an illustration, if a reference number indicates more than one part, the reference number has the form **nX y**. The **n** represents the quantity of the part, the **X** is the multiplication symbol, and the **y** represents the reference number.

For example, in an illustration, the reference number **2X 37** means that two of the parts identified by reference number **37** are indicated.

Contents

Description	Page	Description	Page
Engine & Oil Cooler Assembly	3	Ignition / Electrical	15
Pivot & Linkage Assembly	4	Blower Housing And Baffles	16
Handle Assembly	5	Starter System	17
Control Panel Assembly	6	Fuel System	18
Fuel Tank, Hydro Pumps, & Pto Assembly	7	Engine Controls	19
Hydraulic & Drive System Assembly	8	Air Cleaner	20
Hydraulic & Drive System Assembly (cont.)	9	Exhaust	21
Battery Assembly	10	Schematic	22-23
Clutch Assembly	11	Hydraulic Pump Assembly No. 95-1538	24
Crankcase	12	Traction Drive Motor	25
Oil Pan / Lubrication	13	Maintenance	26-27
Cylinder Head, Valves And Breather	14		

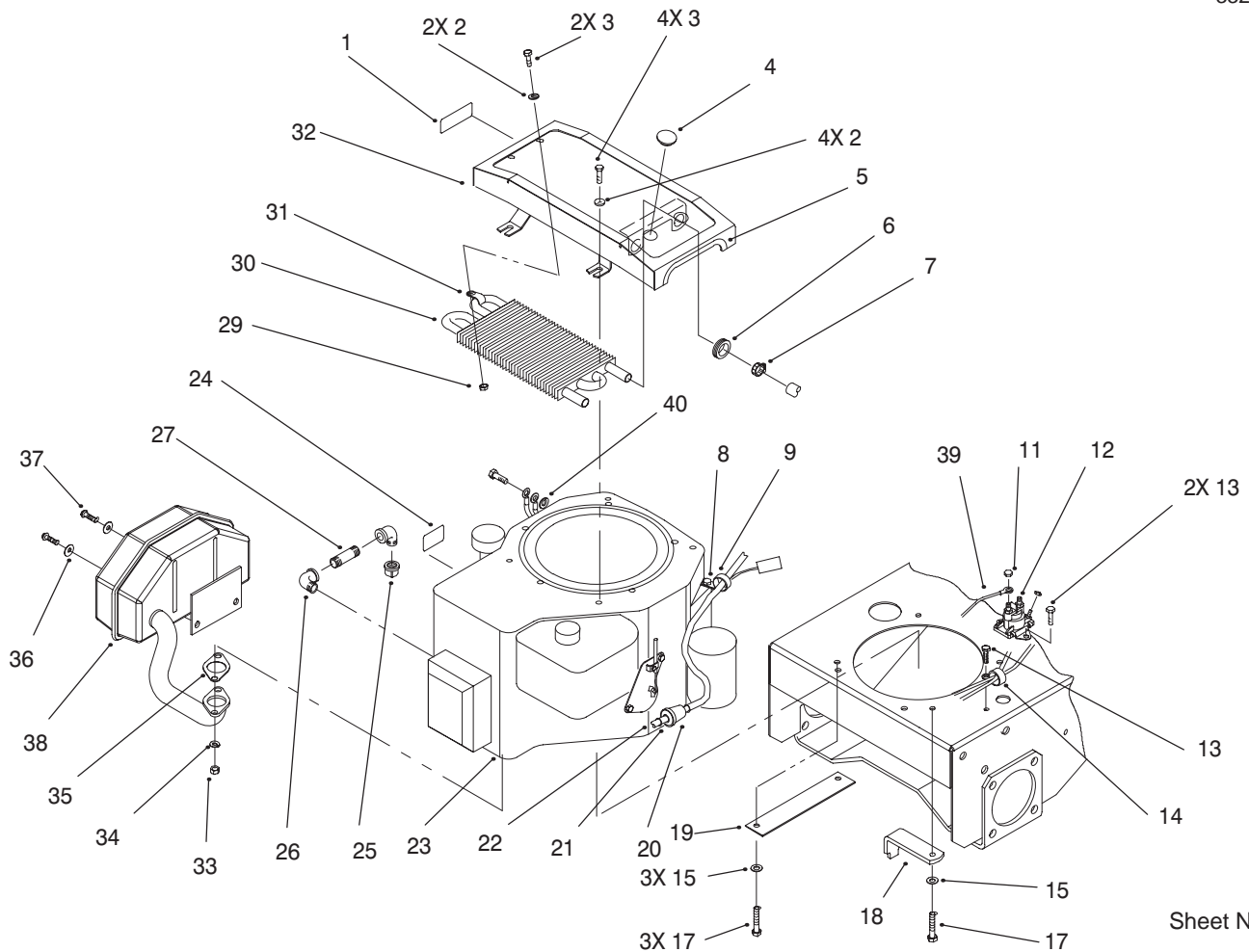
Accessories

Description	Model / Part No.	Description	Model / Part No.
36" Cutting Unit	Model No. 30136	Bagging Kit (For 36" Deck)	Model No. 30125
37" Recycler Deck	Model No. 30137	Bagging Kit (For 37" Deck)	
44" Cutting Unit	Model No. 30144	(Cloth Bag)	Model No. 30129
44" Recycler Deck	Model No. 30146	Bagging Kit (For 37" Deck)	
52" Cutting Unit	Model No. 30152	(Steel Hopper)	Model No. 30130
52" Recycler Deck	Model No. 30154	Bagging Kit	
		(For 44"/52" Decks)	Model No. 30128
		Steerable Sulky	Model No. 30123

Part Description Abbreviations

Part descriptions in this catalog may include the following abbreviations.

Abbreviation	Meaning	Abbreviation	Meaning
AR	as required	INC	incorporated
ASM	assembly	LH	left hand
CARR	carriage	NI	nylon insert
DEG	degrees	PPH	Phillips pan head
FH	flat head	PTH	Phillips truss head
GA	gauge	PTO	power take off
HF	hex flange	RH	right hand
HH	hex head	SFH	slotted fillister head
HHF	hex head flange	SHH	slotted hex head
HLH	hex lag head	SQH	square head
HJ	hex jam	SHWH	slotted hex washer head
HOC	height-of-cut	SPH	slotted pan head
HS	hex socket	SRH	slotted round head
HSBH	hex socket button head	STD	standard
HSFH	hex socket flat head	TAP	self tapping
HSH	hex socket head	TTH	Torx truss head
HWH	hex washer head	WH	wing head
HWHTF	hex washer head thread forming		

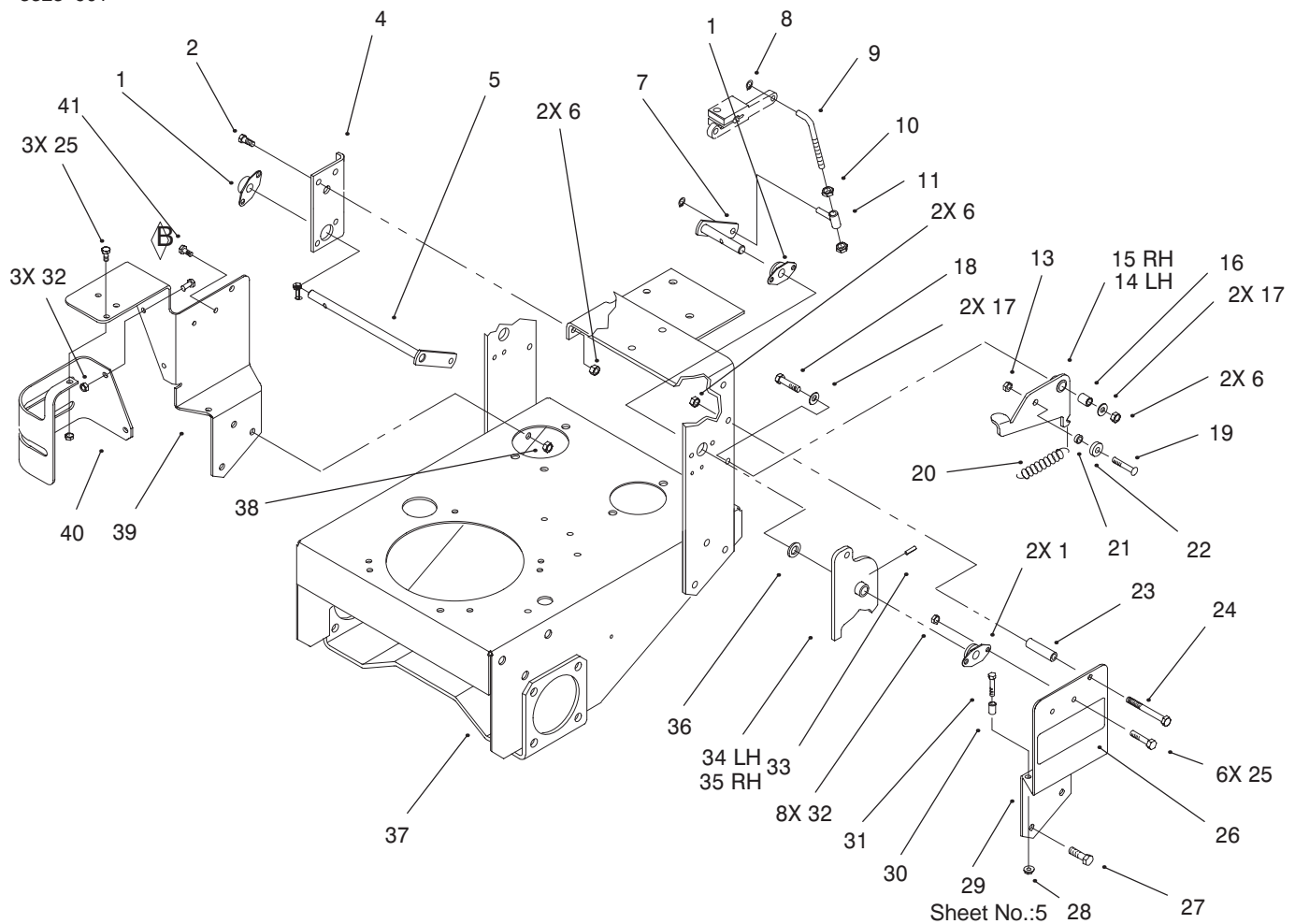


Sheet No.:4

Engine & Oil Cooler Assembly

Ref. No.	Part No.	Qty.	Description
1	95-2814	1	Decal – Fuel Shut Off
2	3256-1	6	Washer-Flat
3	321-39	6	Screw-HH
4	2410-71	2	Plastic Plug
5	29-0642	1	Trim – Cooler Mount
6	240-9	2	Grommet
7	2412-136	2	Hose Clamp
8	32144-19	1	Screw-Thread Form
9	2412-106	1	Clamp-R
11	32149-2	2	Nut-Keps
12	28-4210	1	Solenoid
13	32144-4	3	Screw-HH
14	2412-106	1	Clamp-R
15	3256-23	4	Washer-Flat
17	57-6380	4	Screw (Engine)
18	51-4540-03	1	Retainer-Clutch
19	94-5847-01	1	Cover – Pulley
20	56-6360	1	Filter-Fuel
21	2412-98	4	Clamp
22	47-2964	1	Hose-Gas
23	95-2834	1	Engine – 15 HP Kohler
24	63-8440	1	Decal – Hot Surface
25	288-4	1	3/8-18 Pipe Cap
26	74-0950	2	90° Street Elbow
27	289-46	1	Pipe Nipple

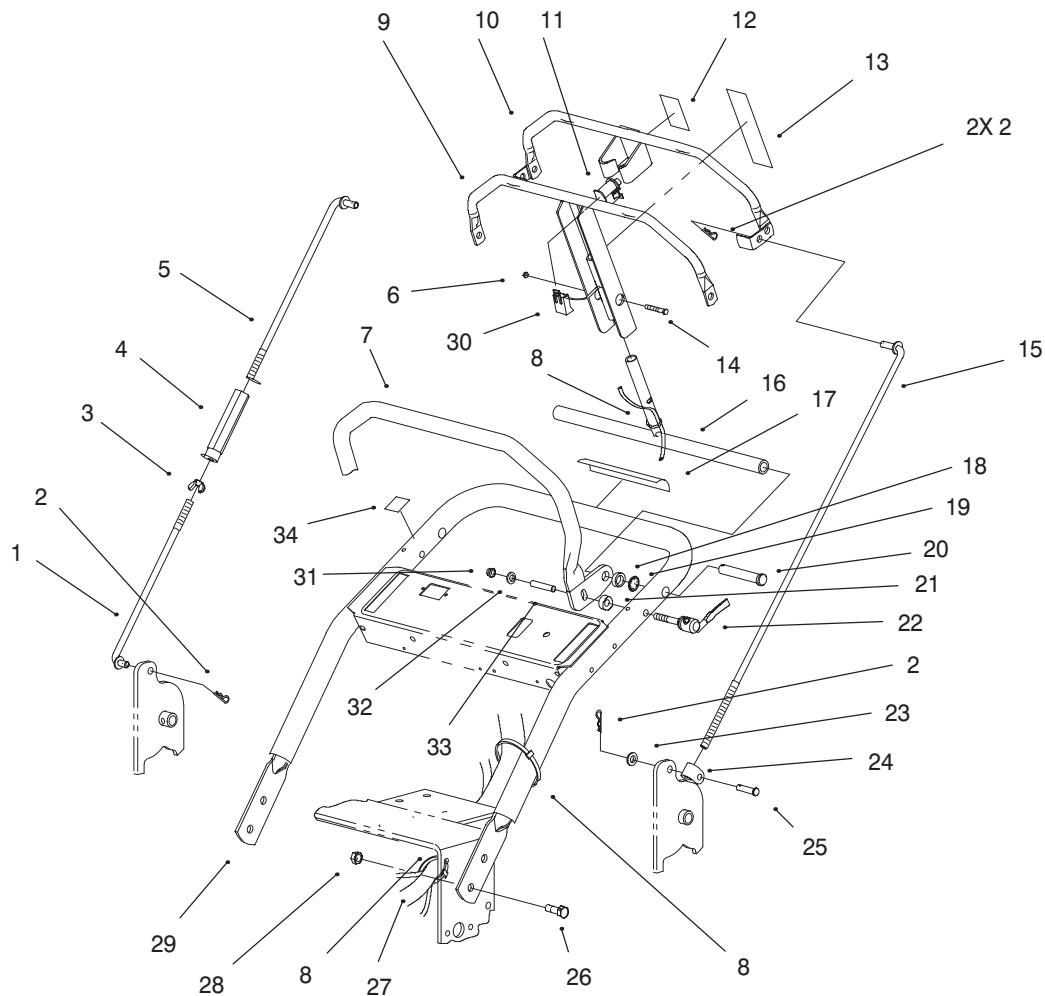
Ref. No.	Part No.	Qty.	Description
29	3296-42	2	Nut-Lock
30	82-4220	1	Oil Cooler
31	2412-134	2	R – Clamp
32	82-4500-03	1	Cooler Mount Wa
33	93-7034	2	Nut-Muffler (w/Engine)
34	3253-4	2	Washer
35	93-7032	1	Gasket-Exhaust (w/Engine)
36	3256-78	2	Washer-Flat
37	93-7033	2	Screw-Muffler (w/Engine)
38	95-5517	1	Muffler F/W
39	54-3092	1	Wire ASM
40	3255-8	1	Washer-Lock/Ext



Pivot & Linkage Assembly

Ref. No.	Part No.	Qty.	Description
1	82-4130	4	Side Flange Bearing ASM
2	322-5	4	Screw-HH
4	82-4210-01	1	Bracket - Bushing
5	94-9059	1	Wa - RH Pivot Lever
6	3296-29	6	Nut-Lock, NI
7	94-9057	1	Wa - LH Pivot Lever
8	32151-3	4	Ring-Grip Ex
9	94-9093	2	Rod - Link
10	3218-2	4	Nut-Jam
11	94-9062	2	Wa - Sleeve
13	3296-47	2	Nut-Lock, NI
14	82-4330-01	1	Detent Arm - LH
15	82-4340-01	1	Detent Arm - RH
16	82-4370	2	Detent Arm Bushing
17	3256-23	4	Washer-Flat
18	322-7	2	Screw-HH
19	3274-32	2	Soc Hd Capscrew
20	82-4160	2	Detent Spring
21	82-4240	2	Bearing Spacer
22	251-259	2	Bearing
23	82-3920	2	Reverse Stop
24	322-14	2	Screw-HH
25	321-3	9	Screw-HH
26	82-4600	2	Decal - Hydro
27	323-6	6	Screw-HH

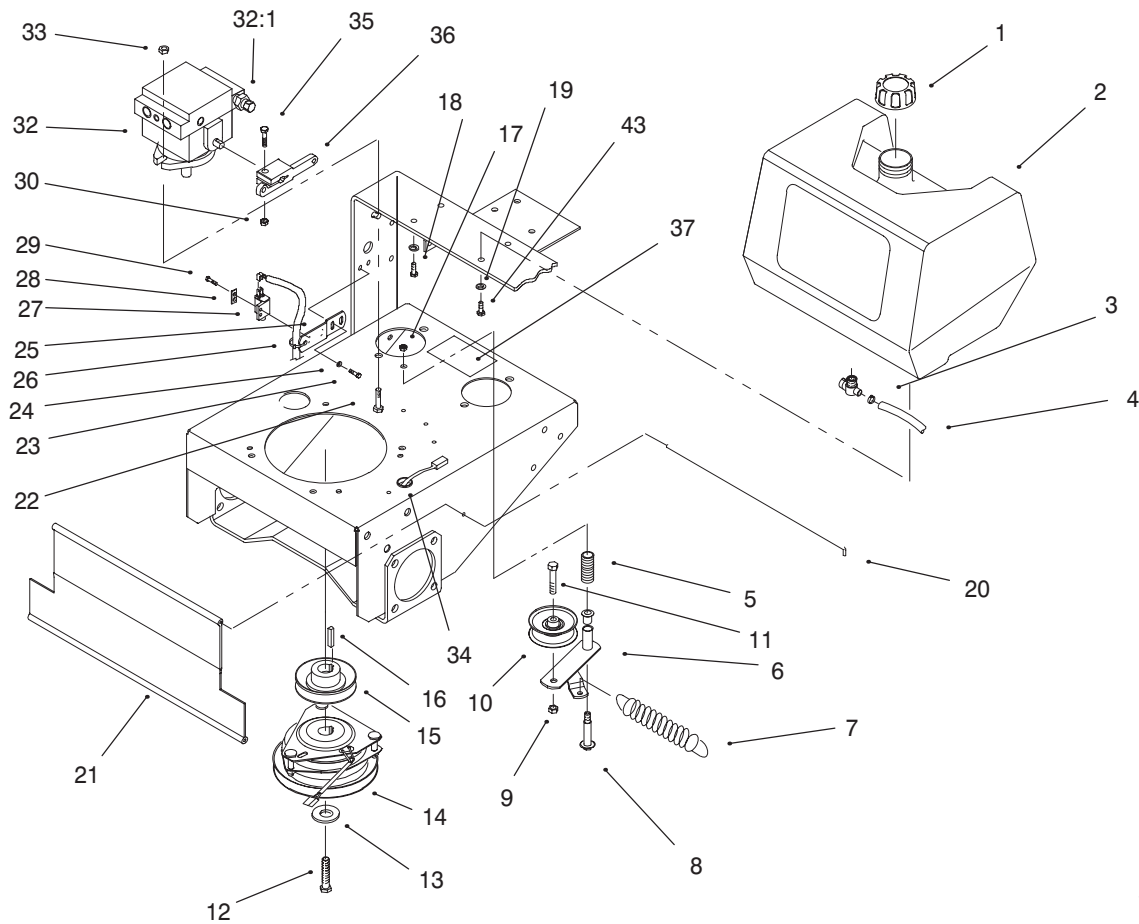
Ref. No.	Part No.	Qty.	Description
28	32128-10	2	Locknut-Flange
29	95-1530-01	1	Brkt - Pivot, LH
30	95-1516	2	Spacer - Tubular
31	321-8	2	Screw-HH
32	3296-42	11	Nut-Lock
33	32121-4	2	Pin-Roll
34	94-9054-01	1	Pivot Arm - LH
35	94-9061-01	1	Pivot Arm - RH
36	257-5	2	Washer-Thrust
37	94-9096-01	1	Frame Wa
38	3296-39	6	Nut-Lock, NI
39	95-1522-01	1	Brkt - Pivot, RH
40	95-5868-01	1	Guard - Filter
41	321-3	2	Screw-HH



Sheet No.:6

Handle Assembly

Ref. No.	Part No.	Qty.	Description	Ref. No.	Part No.	Qty.	Description
1	95-1506	1	Rod – Lower Control	26	3234-11	4	Screw-HHF
2	3290-307	4	Hairpin	27	100-3276	1	Harness- Wire,Hydro
3	32103-3	1	Wing Nut	28	32128-21	4	Nut-HF
4	95-1504	1	Turnbuckle	29	95-5856-03	1	Handle – Upper
5	95-1505	1	Rod – Upper Control	30	218-595	1	Connector-Body
6	32153-1	1	Nut-Lock	31	33023-00	2	Nut-Lock NI
7	95-1536-03	1	ASM – Handle	32	3290-436	2	Belleville Washer
8	3290-378	3	Tie-Cable	33	95-5854	2	Sleeve
9	95-1507-03	1	Control Bar ASM	34	95-5862	1	Decal – Speed Lock
10	95-1510-03	1	Bail ASM				
11	82-2190	1	Switch-Bail				
12	95-1523	1	Decal – Traction Drive				
13	95-1524	1	Decal – T Bar				
14	32105-12	1	Screw				
15	94-9095	1	Rod – Control				
16	95-1513-03	1	Pivot ASM				
17	82-4590	1	Decal – Warning				
18	95-5855	2	Spacer				
19	32151-80	2	Push-On Circular				
20	283-55	2	Pin-Clevis				
21	82-3840	2	Spacer				
22	95-5853	2	ASM – Quick Release Lock				
23	3256-23	1	Washer-Flat				
24	74-0521	1	Fitting-Rod				
25	283-6	1	Pin-Clevis				

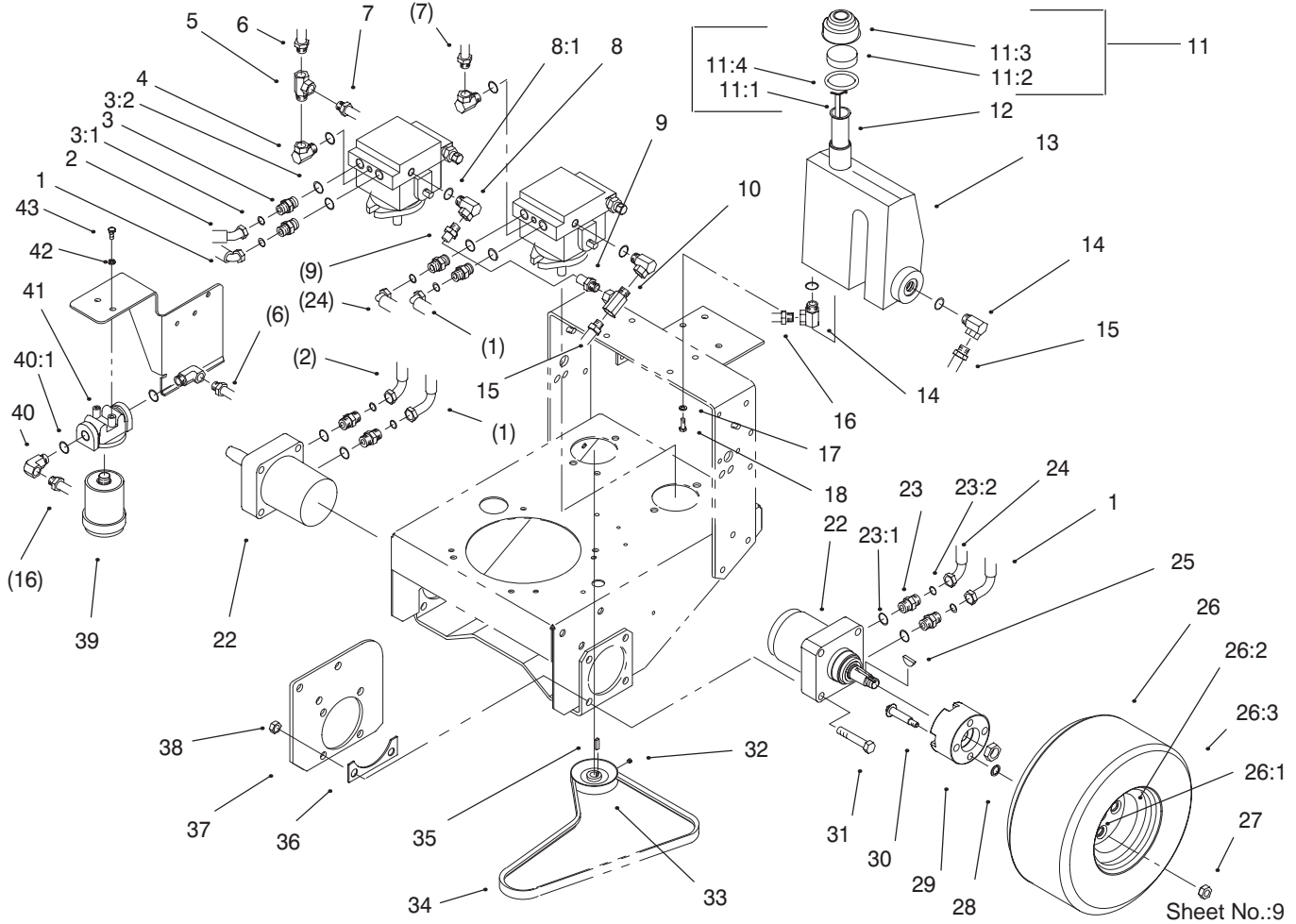


Sheet No.:8

Fuel Tank, Hydro Pumps, & Pto Assembly

Ref. No.	Part No.	Qty.	Description
1	55-3570	1	Gas Cap Assembly
2	95-2802	1	Tank - Fuel
3	2412-98	2	Clamp
4	47-2982	1	Gas Hose
5	88-1880	1	Compression Spring
6	86-4770	1	Idler Lever ASM
7	68-2190	1	Spring-Extension
8	27-6230	1	Bolt-Wheel
9	3296-39	1	Nut-Lock, NI
10	62-4540	1	Pulley
11	323-9	1	Screw-HH
12	3212-9	1	Screw-HH
13	112843	1	Washer
14	54-3200	1	Clutch/Brake
15	44-5940	1	Pulley
16	608006	1	Key
17	3296-6	1	Nut-Lock, NI
18	322-3	2	Screw-HH
19	3253-4	4	Washer
20	95-1529	1	Rod - Shield
21	95-1526	1	Shield - Trailing
22	324-5	4	Screw-HH
23	32144-4	4	Screw-HH
24	3256-1	4	Washer-Flat
25	82-4580-03	2	Bracket - Neutral
26	3290-378	2	Tie-Cable

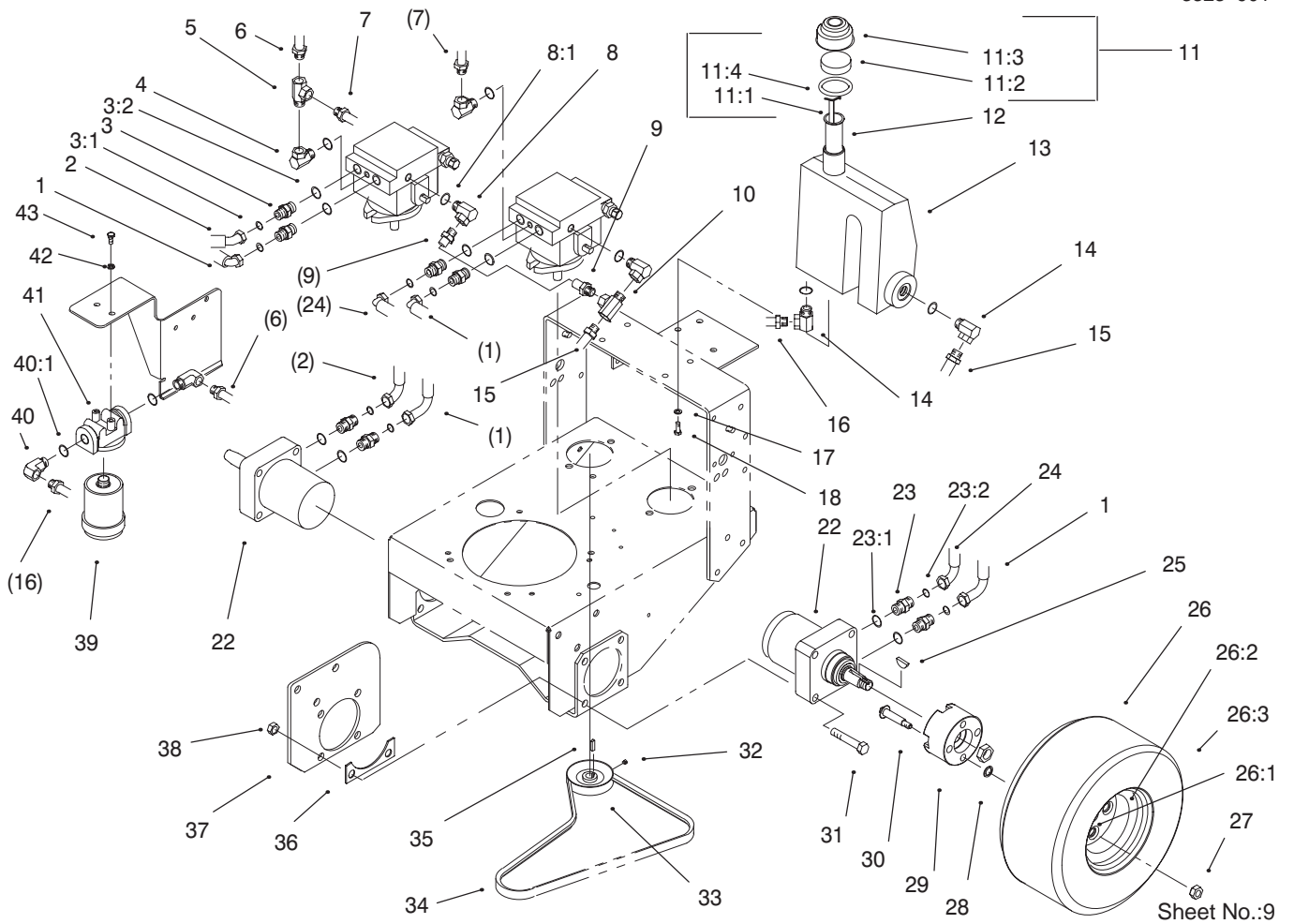
Ref. No.	Part No.	Qty.	Description
27	65-7410	2	Switch - Single Pole
28	82-4570	2	Switch Plate
29	32144-1	4	Screw-Taptite
30	3296-29	2	Nut-Lock, NI
32	95-1538	2	ASM - Hydraulic Pump
32:1	95-1539	2	Valve ASM
33	32128-42	4	Nut-Hex, Flange
34	237-124	1	Grommet
35	322-7	2	Screw-HH
36	82-3790	2	Pump Arm
37	95-1543	1	Decal - Valve Adjustment
43	322-4	2	Screw-HH



Hydraulic & Drive System Assembly

Ref. No.	Part No.	Qty.	Description
1	82-4550	2	Hydraulic Hose ASM
2	82-4540	1	Hydraulic Hose ASM
3	340-4	4	Adapter
3:1	237-30	4	O-Ring
3:2	237-79	4	O-Ring
4	354-116	2	Female Pipe Swivel
5	2815-16	1	Street Tee
6	95-5880	1	ASM - Hydraulic Hose
7	82-4170	1	Hydraulic Hose ASM
8	354-115	2	Female Pipe Swivel
9	82-4201	1	Hydraulic Hose ASM
10	2815-15	1	Street Tee
11	76-0200	1	Oil Cap Assy
11:1	76-0240	1	Dipstick Wa
11:2	76-0220	1	Foam - Filter, Oil Cap
11:3	76-0190	1	Oil Cap
11:4	237-71	1	O-Ring
12	29-0590	1	Filler Screen
13	95-1532	1	Reservoir - Oil
14	354-118	2	Hydraulic Fitting
15	82-4192	2	Hydraulic Hose ASM
16	82-4200	1	Hydraulic Hose ASM
17	3253-4	3	Washer
18	322-3	3	Screw-HH
22	82-8230	2	Wheel Motor

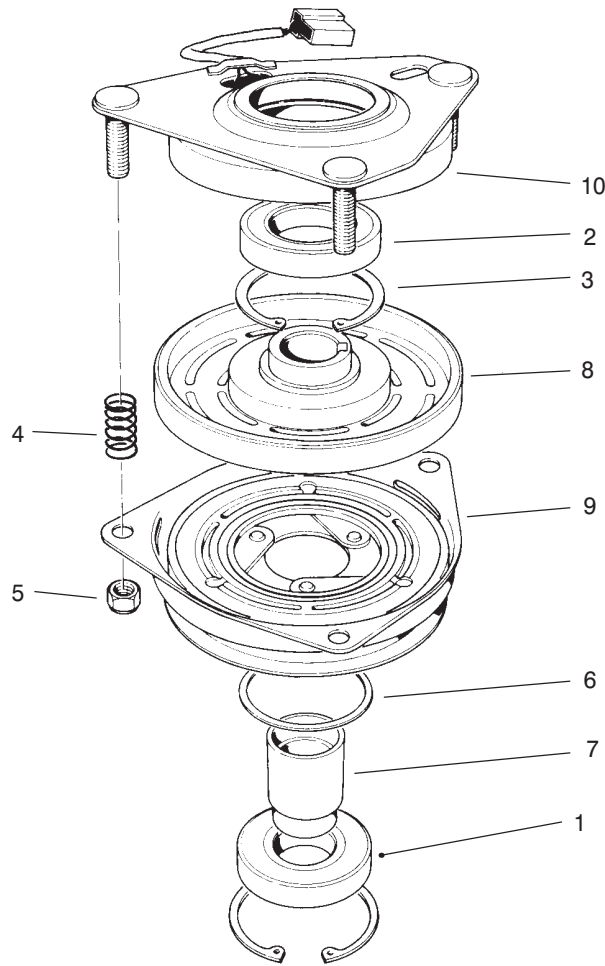
Ref. No.	Part No.	Qty.	Description
23	340-6	4	Fitting-Straight
23:1	237-30	4	O-Ring
23:2	237-80	4	O-Ring
24	82-4560	1	Hydraulic Hose ASM
25	3257-8	2	Key-Woodruff
26	94-9664	2	Assembly - Wheel/Tire
26:1	232-27	2	Valve Cap & Stem ASM
26:2	242-87	2	Wheel
26:3	231-117	2	Tire-15 X 6.4
27	242-50	8	Nut-Lug
28	32112-17	8	Pushnut
29	82-3830	2	Wheel Hub
30	3213-8	8	Screw-HH
31	325-11	8	Screw-HH
32	3241-5	4	Screw-Set
33	95-1528	2	Pulley - Pump
34	82-4110	1	V-Belt
35	80-6090	2	Key - Pump
36	86-4740-01	2	Spacer - Frame
37	86-4730-01	2	Plate - Frame
38	3296-23	8	Nut-Lock, NI
39	67-8110	2	Trans Oil Filter
40	354-117	2	Hydraulic Fitting
40:1	237-79	2	O-Ring



Hydraulic & Drive System Assembly (cont.)

Ref. No.	Part No.	Qty.	Description
41	86-9080	1	Filter Head
42	3253-3	2	Washer-Lock/Sp
43	321-3	2	Screw-HH

Ref. No.	Part No.	Qty.	Description



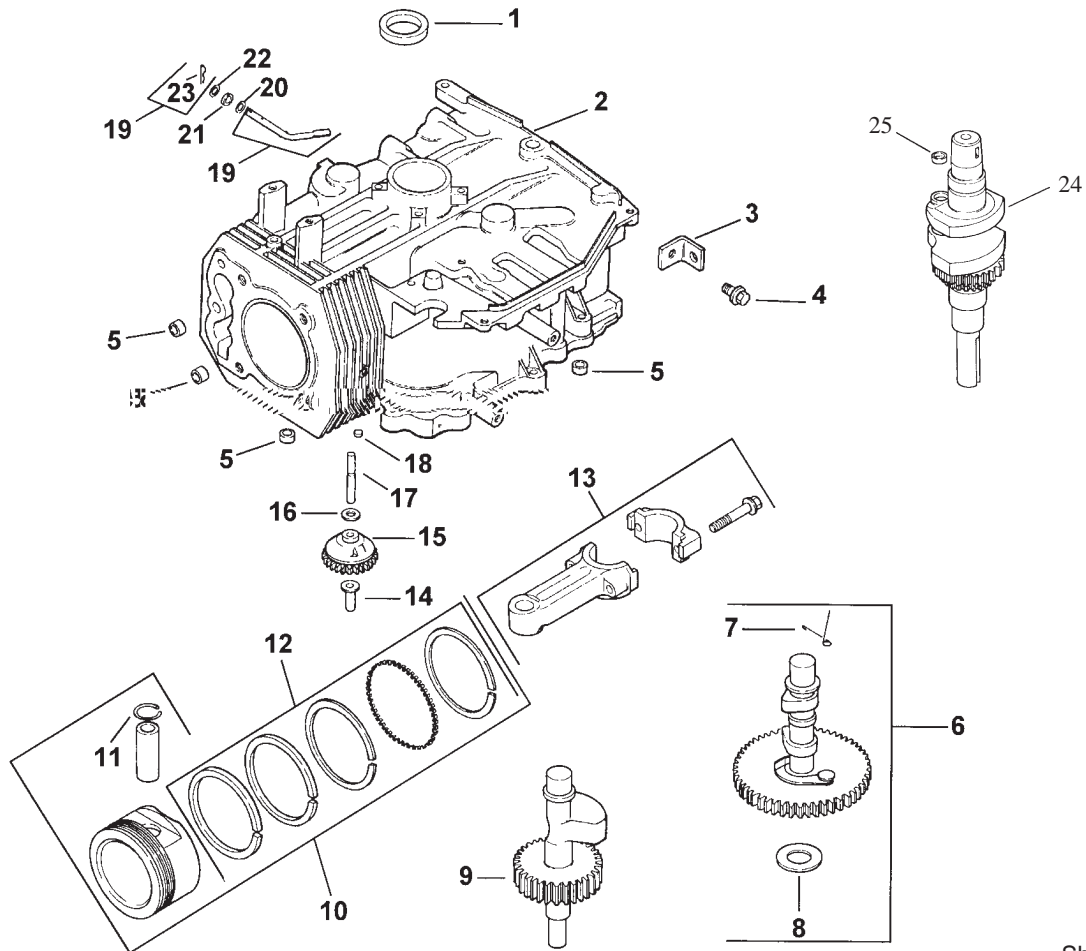
Sheet No.:A1

Clutch Assembly

Ref. No.	Part No.	Qty.	Description
1	251-291	1	Pulley Brg
2	251-292	1	Field Brg
3	44-8310	2	Retaining Ring
4	44-8320	3	Spring
5	3296-6	3	Nut-Lock, NI
6	44-8330	1	Spacer-Pulley Brg
7	44-8340	1	Bearing Collar
8	44-8360	1	Field Coil,Rotor/Brg ASM
9	44-8370	1	Armature/Pulley/Brg
10	54-0230	1	Field ASM/Brg

Ref. No.	Part No.	Qty.	Description

ENGINE KOHLER MODEL NO. CV15T Spec 41561
Obtain Parts From Kohler



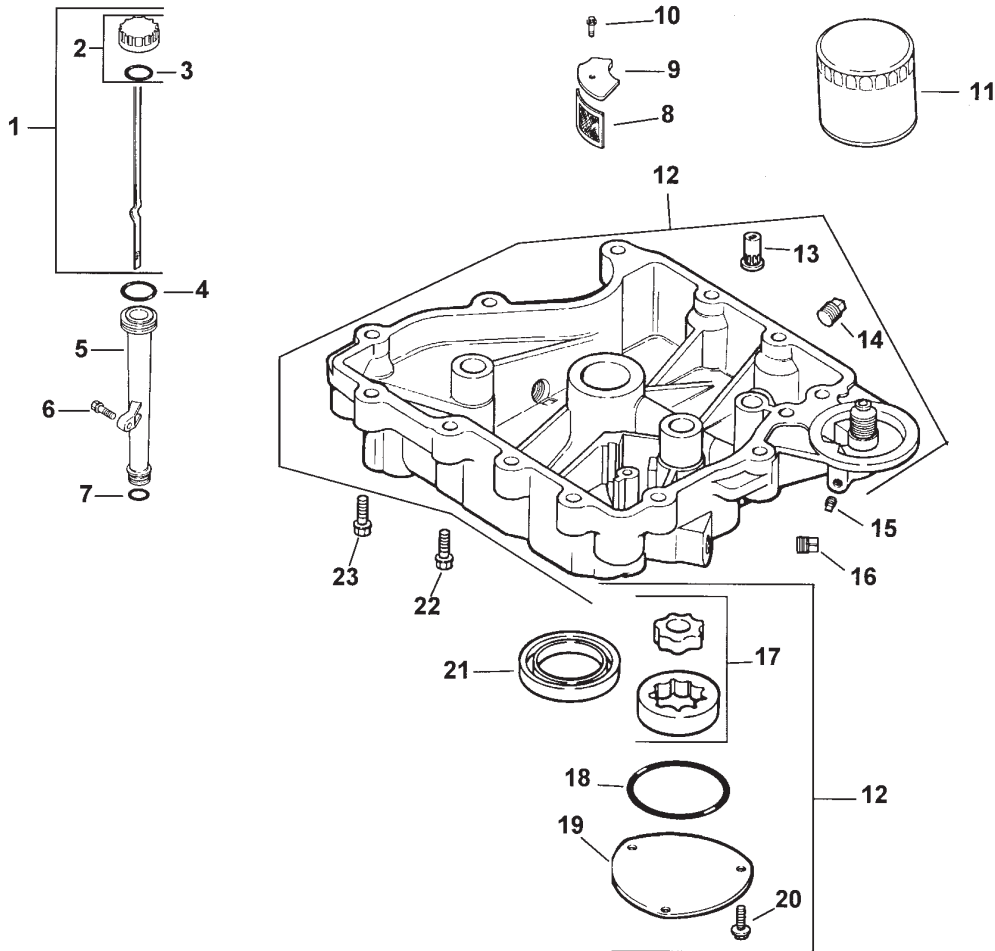
Sheet No.: 2 01

Crankcase

Ref. No.	Part No.	Qty.	Description
1	12 032 03	1	Seal-Crankshaft
2	12 522 18	1	Shortblock
3	12 445 02	1	Strap-Lifting
4	M-0839025	1	Screw M8x1.25x22
5	12 380 17	4	Dowel-Locating
6	12 755 49	1	Kit-Camshaft INC 7-8
7	12 089 31	1	Spring-Actuating
8	12 422 07	A/R	Shim-Camshaft A/R
8	12 422 08	1	Shim-Camshaft A/R
8	12 422 09	A/R	Shim-Camshaft A/R
8	12 422 10	A/R	Shim-Camshaft A/R
8	12 422 11	A/R	Shim-Camshaft A/R
8	12 422 12	A/R	Shim-Camshaft A/R
8	12 422 13	A/R	Shim-Camshaft A/R
9	12 144 27	1	Shaft-Balance
10	12 847 07	1	Set Piston w/Ring STD
10	12 847 08	1	Set-Piston w/Ring .25
10	12 847 09	1	Set-Piston w/Ring .50
11	12 018 02	2	Retainer-Piston Pin
12	12 108 07	1	Ring Set STD
12	12 108 08	1	Ring Set .25
12	12 108 09	1	Ring Set .50
13	12 067 05	1	Rod Connecting STD
13	12 067 06	1	Rod Connecting .25

Ref. No.	Part No.	Qty.	Description
14	12 380 01	1	Pin-Governor Regulating
15	12 043 05	1	Gear-Governor ASM
16	M-0631005	1	Washer-Governor
17	12 144 02	1	Shaft-Governor Gear
18	52 139 09	1	Plug-Cup
19	12 755 64	1	Kit - Shaft-Governor Cross (Incl. Ref.#23)
20	X-25-102	1	Washer-Flat
21	12 032 01	1	Seal-Governor Shaft
22	M-0631015	1	Washer-Governor Shaft
23	12 154 05	1	Clip - Hitch Pin
24	12 014 30	1	Crankshaft ASM
25	12 139 01	1	Plug-Cup
*	12 030 02	1	Bearing - Crankshaft 0.25
*	12 030 03	1	Bearing - Crankshaft 0.50
*	12 755 82	1	Set - Gasket

* Not Illustrated



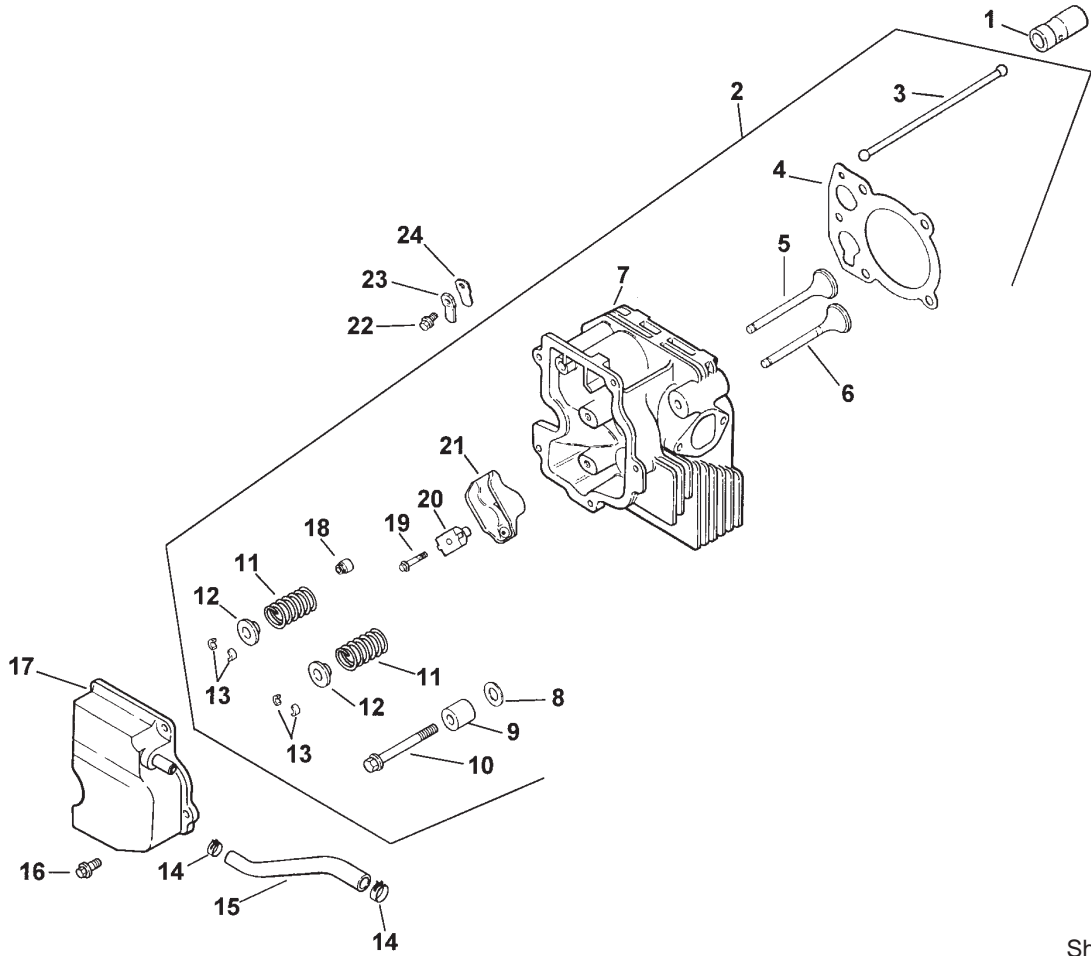
Sheet No.: 2 02

Oil Pan / Lubrication

Ref. No.	Part No.	Qty.	Description
1	12 038 01	1	Dipstick INC 2-3
2	25 755 13	1	Kit-Oil Cap INC 3
3	12 153 03	1	O Ring-Fill Cap
4	12 153 02	1	O Ring-Upper Fill Tube
5	12 123 04	1	Tube-Oil Fill
6	M-0545020	1	Screw M5x0.8x20
7	12 153 01	2	O Ring-Lower Fill Tube
8	25 162 07	1	Screen-Oil
9	12 096 03	1	Cover-Oil Pickup Screen
10	M-0545016	1	Screw M5x0.8x16
11	52 050 02	1	Filter-Oil
12	12 199 45	1	Pan - Oil (Incl. Ref. #13, 14, 17-20)
13	25 462 09	1	Valve - Oil Pressure
14	X-75-2	2	Plug-1/4nptf
15	X-75-1	2	Plug-1/8nptf
16	X-75-10	2	Plug-SH 3/8 NPTF
17	12 393 01	1	Pump-Oil
18	12 153 06	1	O Ring-Oil Pump Cover
19	12 096 34	1	Cover-Oil Pump
20	M-0545016	3	Screw M5x0.8x16
21	12 032 03	1	Seal-Crankshaft

Ref. No.	Part No.	Qty.	Description
22	24 086 16	11	Screw-M8X1.25X45
23	24 068 17	1	Screw-M5X1.25X45

* Not illustrated

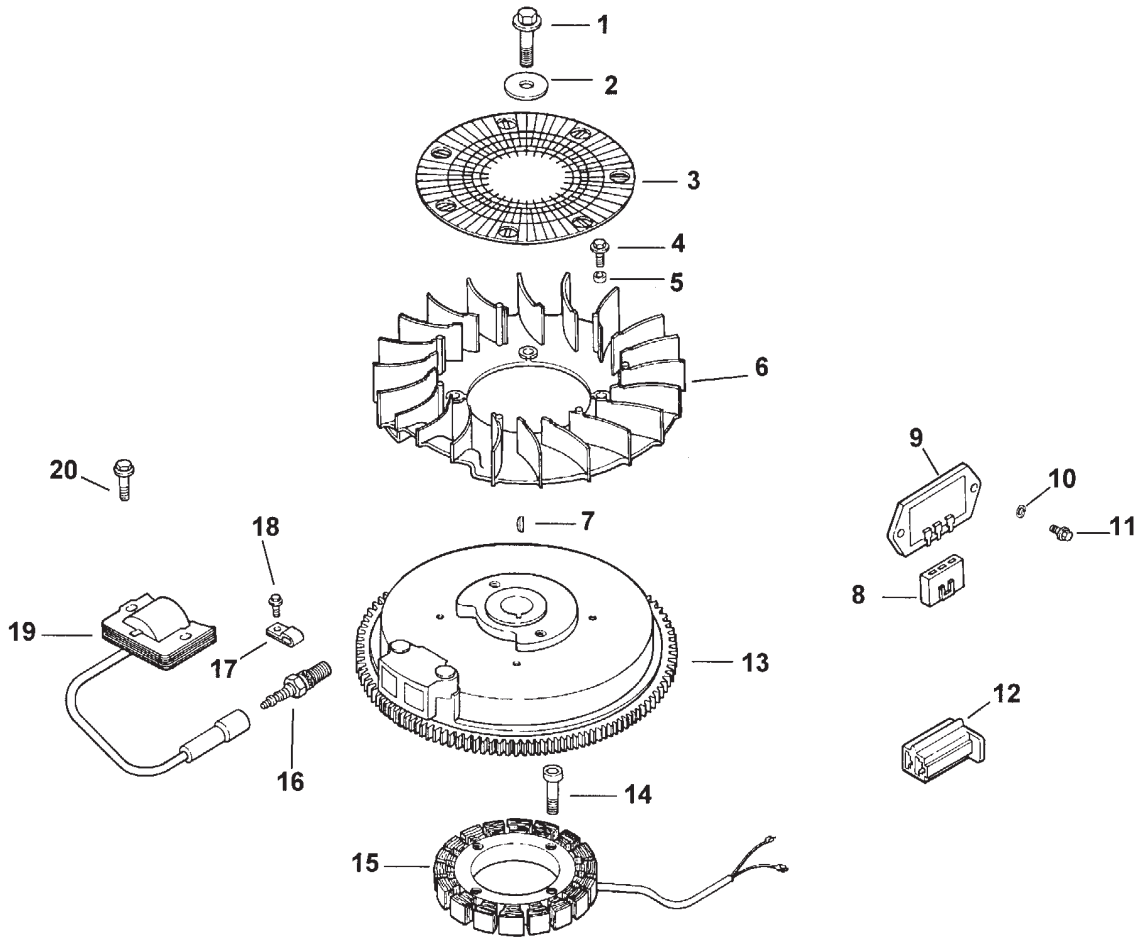


Sheet No.: 2 03

Cylinder Head, Valves And Breather

Ref. No.	Part No.	Qty.	Description
1	12 351 02	2	Lifter-Valve
2	12 755 81	1	Kit-Cylinder Head
3	12 411 01	2	Rod-Push
4	12 041 10	1	Gasket-Cylinder Head
5	12 017 01	1	Valve-Intake STD
5	12 017 02	1	Valve-Intake .25
6	12 016 01	1	Valve-Exhaust STD
6	12 016 02	1	Valve-Exhaust .25
7	12 318 19	1	Head - Cylinder
8	12 468 05	1	Washer-Flat
9	12 112 13	1	Spacer-Head Bolt Exhaust
10	12 086 15	5	Screw M10x1.5x80
11	12 089 01	1	Spring-Valve
12	12 173 01	2	Cap-Valve Spring
13	12 755 03	2	Kit-Retainer
14	X-426-9	2	Clamp-Hose
15	12 326 03	1	Hose-Breather
16	M-0645020	3	Screw-HH M6x1.0x20
17	12 096 07	1	Cover-Valve w/Nipple
18	24 023 05	1	Seal-Valve Spring
19	M-0640034	2	Screw M6x1.0x34
20	12 599 03	2	Pivot - Rocker Arm
21	25 186 01	2	Arm-Rocker
22	M-0545010	1	Screw M5x0.8x10

Ref. No.	Part No.	Qty.	Description
23	12 018 01	1	Retainer-Breather Reed
24	12 402 02	1	Reed-Breather



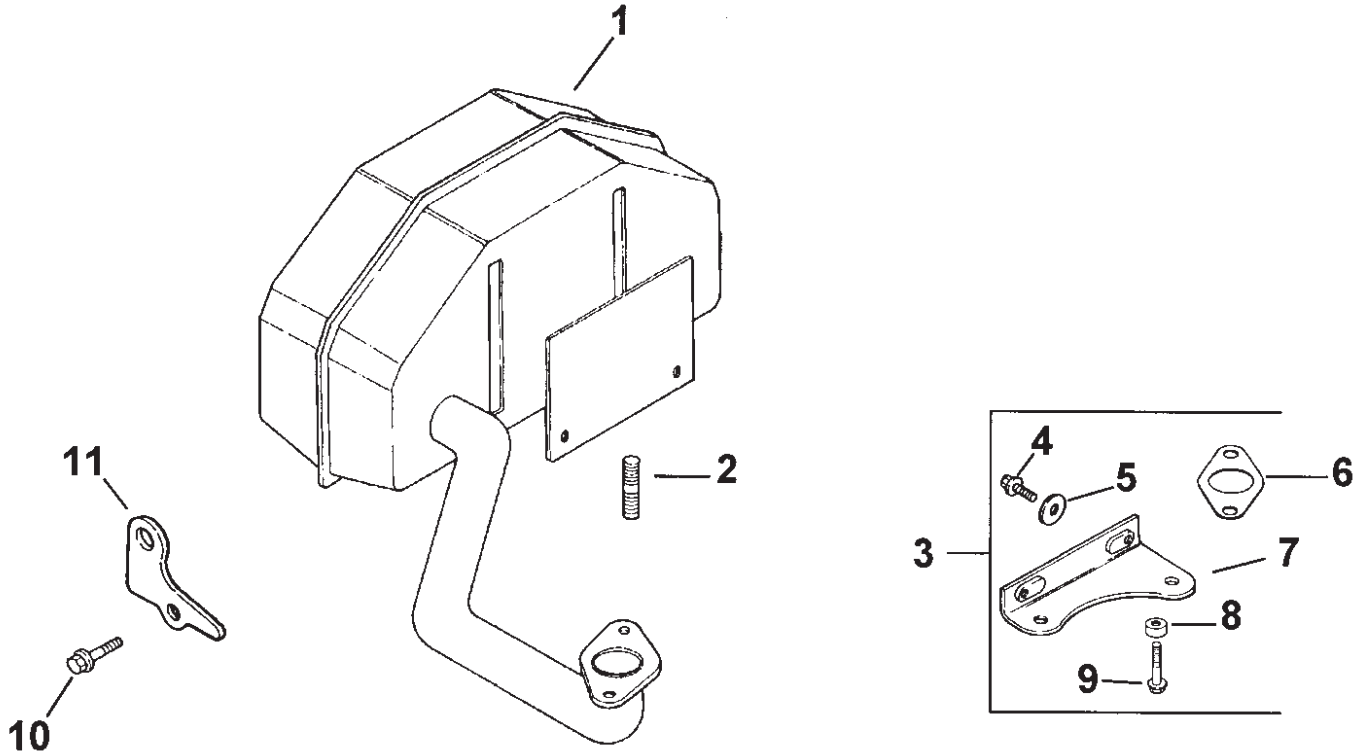
Sheet No.: 2 04

Ignition / Electrical

Ref. No.	Part No.	Qty.	Description
1	12 086 14	1	Screw-Flywheel Mounting
2	12 486 03	1	Washer-Flat
3	12 162 03	1	Screen-Grass
4	M-0639016	4	Screw M6x1.0x16
5	12 112 01	4	Spacer-Fan
6	12 157 02	1	Fan
7	X-42-15	1	Key
8	236602	1	Connector-Regulator
9	12 403 01	1	Rectifier-Unregulated
10	X-22-11	2	Washer - Lock
11	M-0639016	2	Screw M6x1.0x16
12	41 155 03	1	Connector
13	12 025 33	1	Flywheel ASM
14	M-0548025	4	Screw M5x0.8x25
15	54 755 09	1	Kit - Stator-15 Amp (Incl. Bracket P/N #24 126 71)
16	12 132 02	1	Spark Plug
17	X-728-1	2	Clip-Kill Lead
18	M-0545010	1	Screw M5x0.8x10
19	12 584 02	1	Module-Ignition
20	M-0545020	2	Screw M5x0.8x20
*	X-25-5	1	Washer
*	12 518 01	1	Lead-White
*	25 518 05	1	Lead-Black

Ref. No.	Part No.	Qty.	Description
*	25 518 29	1	Lead-Black
*	24 126 71	1	Bracket - Stator Wire

* Not illustrated



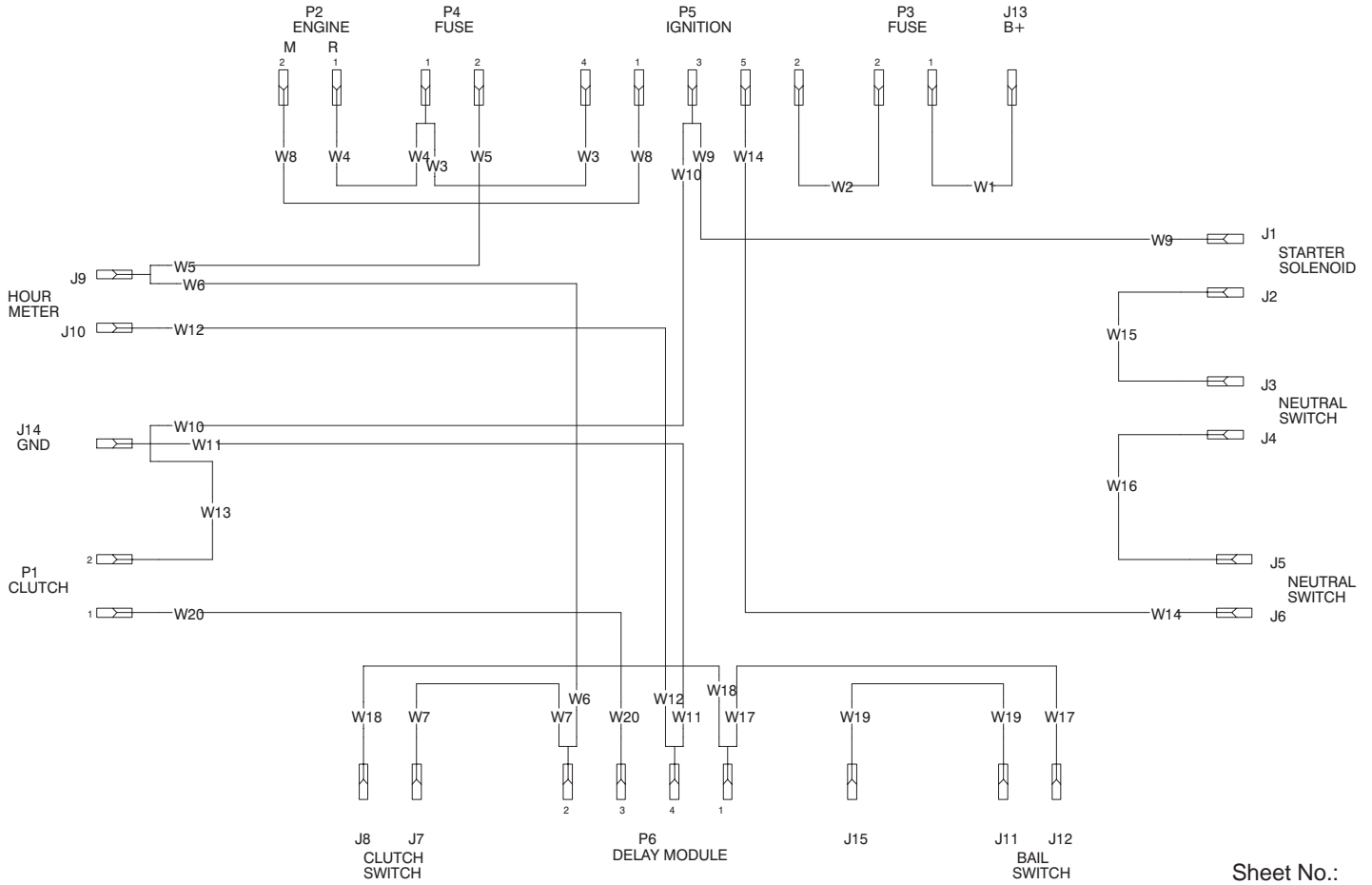
Sheet No.: 2 10

Exhaust

Ref. No.	Part No.	Qty.	Description
1	12 068 03	1	Muffler
2	M-0829033	2	Stud M8x1.25x20
3	12 755 30	1	Kit-Bracket (Incl. Ref.#4-9)
4	M-0650012	2	Screw
5	X-25-52	2	Washer
6	12 041 03	1	Gasket - Exhaust
7	12 126 55	1	Bracket-Muffler
8	12 468 01	1	Washer
9	12 086 13	1	Screw
10	M-0645025	1	Screw
11	12 445 06	1	Strap-Lifting

Ref. No.	Part No.	Qty.	Description

* Not illustrated

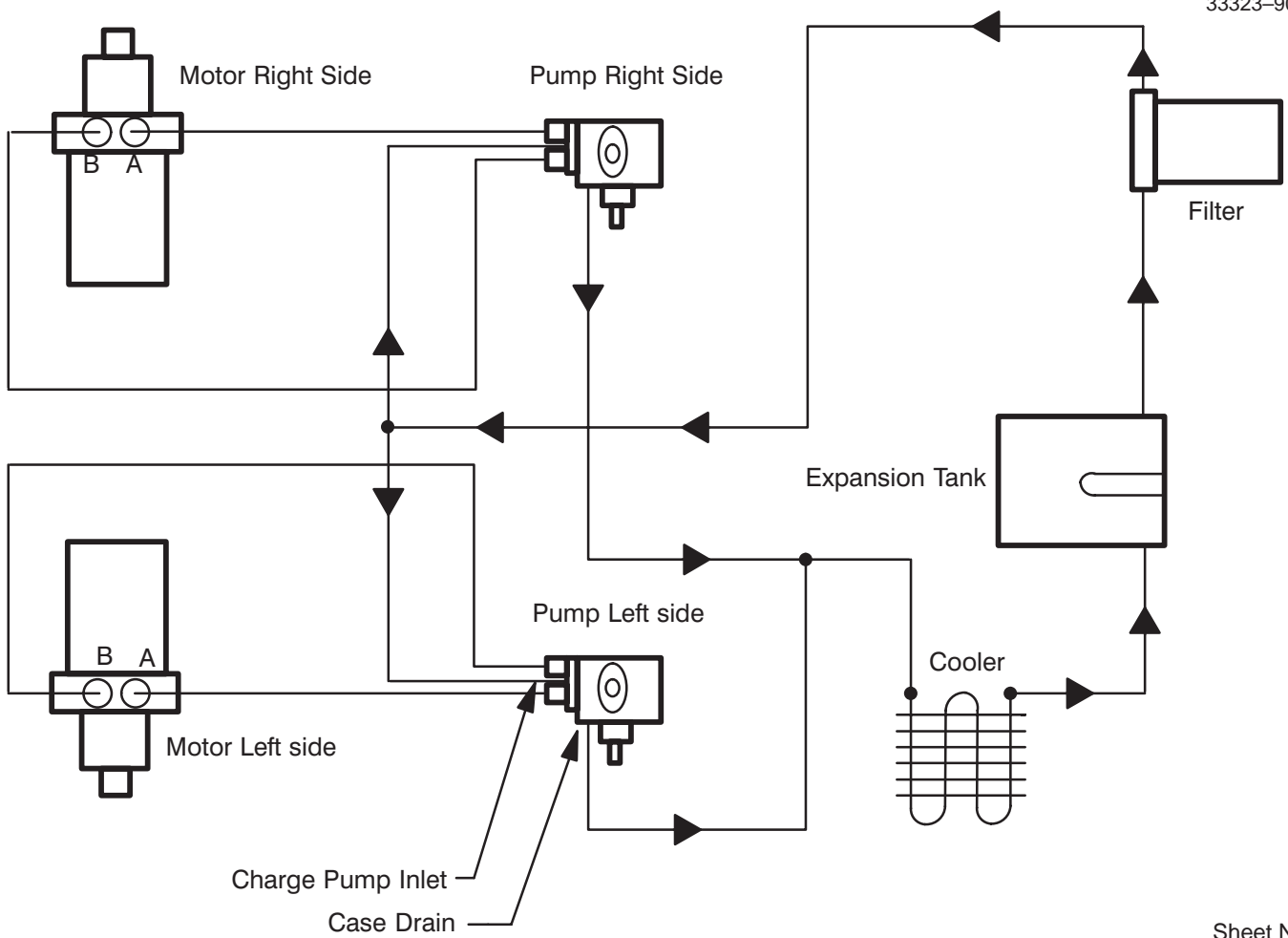


Sheet No.:

Schematic

Ref. No.	Part No.	Qty.	Description

Ref. No.	Part No.	Qty.	Description

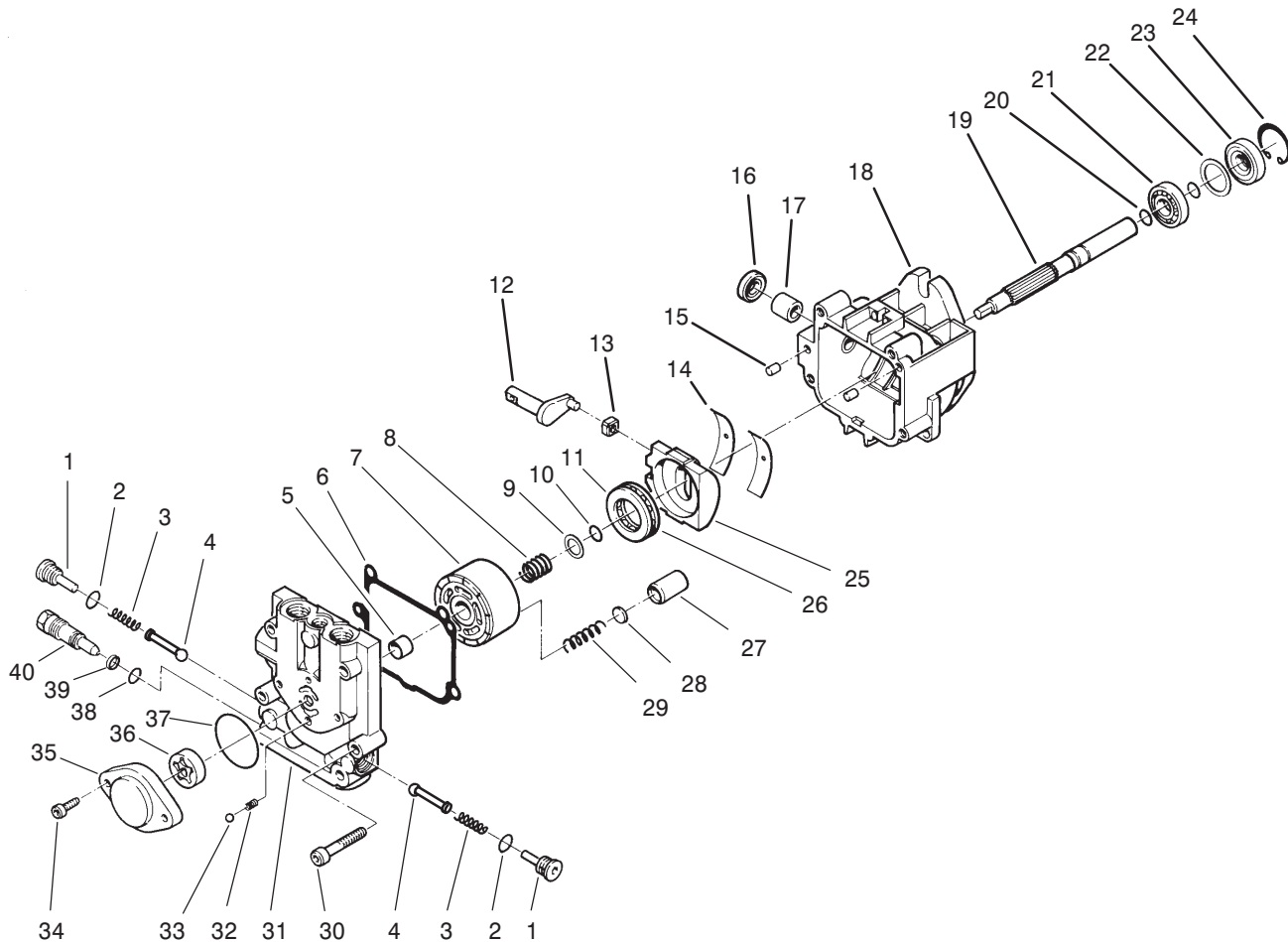


Sheet No.:

Schematic

Ref. No.	Part No.	Qty.	Description

Ref. No.	Part No.	Qty.	Description



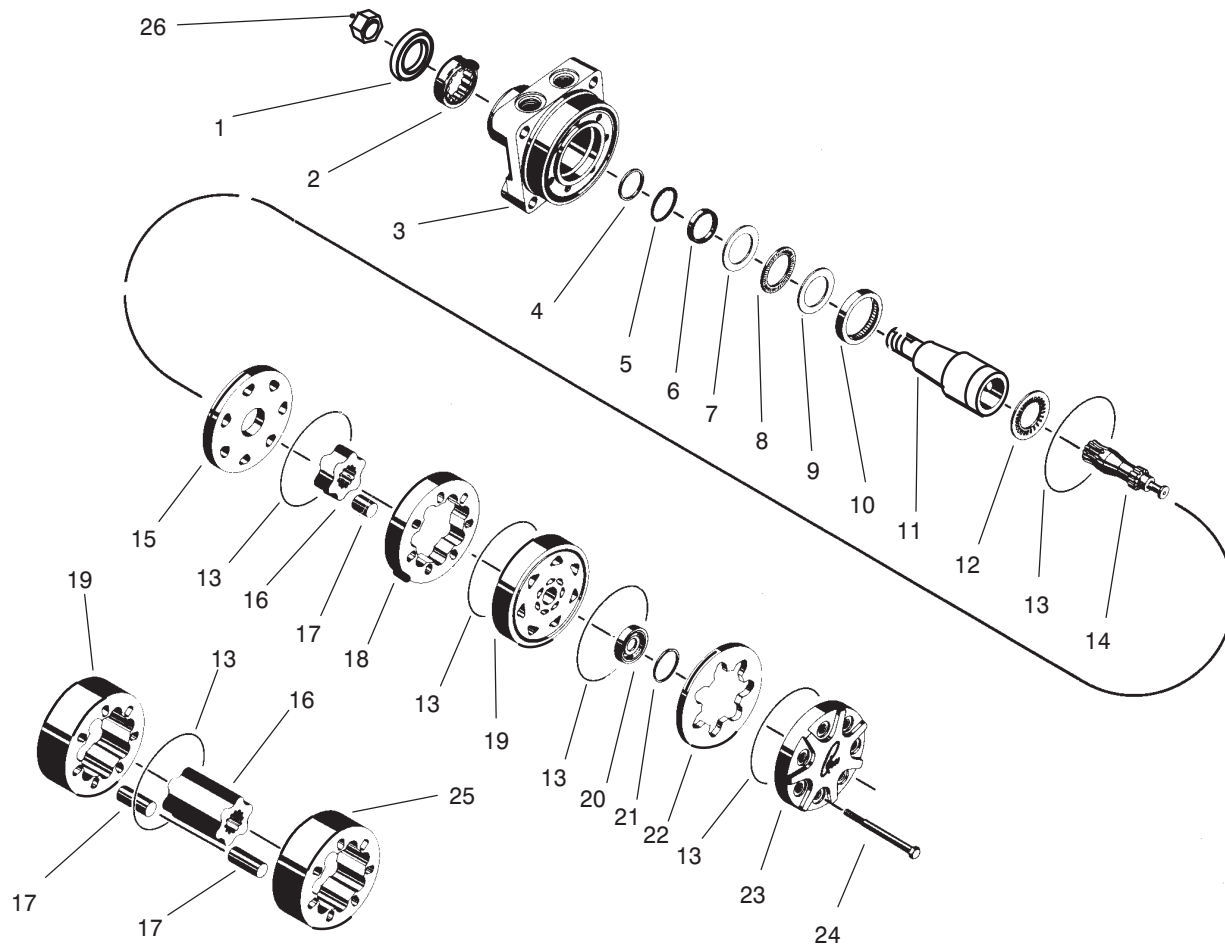
T-1236

Hydraulic Pump Assembly No. 95-1538

Ref. No.	Part No.	Description	No. Used
*1	82-6120	Check Valve Kit (Incl. Ref. #2-4)	1
2		Seal - O-Ring	2
3		Spring	2
4		Poppet	2
5		Journal - Bearing	1
6		Gasket - End Cap	1
7		Cylinder Block Kit (Incl. Ref. #8-10 & 27-29)	1
8		Spring	1
9		Washer	1
10		Ring - Retaining	1
11		Plate - Thrust	1
12		Arm - Trunnion	1
13		Guide - Slot	1
14		Cradle - Bearing	2
15		Pin	2
16		Seal - Lip	1
17		Journal - Bearing	1
18		Housing - Assembly (Incl. Ref. #16 & 17)	1
19		Shaft	1
20		Ring - Retaining	2
21		Bearing - Ball	1
22		Spacer	1

Ref. No.	Part No.	Description	No. Used
23		Seal - Lip	1
24		Ring - Retaining	1
25		Swashplate Assembly	1
26		Roller - Thrust	1
27		Piston	5
28		Washer - Thrust	5
29		Spring - Piston	5
30		Screw	4
31		End Cap Assembly (Incl. Ref. #5)	1
32		Ball	1
33		Spring	1
34		Screw	2
35		Housing - Charge Pump	1
36		Gerotor Assembly	1
37		Seal - O-Ring	1
38		Seal - O-Ring	1
39		Ring - Back-Up	1
40		Valve - Bypass	1
*	80-6110	Charge Relief Valve Kit (Incl. Ref. #32-33)	1
*	80-6130	Overhaul Seal Kit (Incl. Ref. #6, 10, 16, 20, 23 & 37-39)	1

*Not Illustrated



C-0737

Traction Drive Motor

Ref. No.	Part No.	Description	No. Used
1		Seal	1
2		Bearing	1
3		Housing	1
4		Washer - Back Up	1
5		Washer - Back Up	1
6		Seal	1
7		Washer - Thrust	1
8		Bearing - Thrust	1
9		Washer - Thrust	1
10		Bearing - Inner	1
11		Coupling - Shaft	1
12		Bearing - Thrust	1
13		"O"Ring	5
14		Link - Drive	1

Ref. No.	Part No.	Description	No. Used
15		Plate Wear	1
16		Rotor	1
17		Vane	7
18		Stator	
19		Manifold	1
20		Commutator	1
21		Seal - Commutator	1
22		Commutator - Ring	1
23		Cover - End	1
24		Bolt - Special	A/R
25		Stator Half	
26	85-7310	Nut	1
*	85-7320	Kit - Seal (Incl. Ref. #1,4,6,13 & 20)	1

*Not Illustrated

