



Proline 20 HP
Hydro Mid-Size Traction Unit
Model No. 30192-20000001 and Up

Parts Catalog

Ordering Replacement Parts

To order replacement parts, please supply: the part number, the quantity, and the description of each part desired.

Understanding Reference Numbers

Each identified part in an illustration has a reference number. The reference number for a part also appears in the parts list, along with other information about the part.

This catalog uses two special reference number formats, one to indicate parts in a service assembly and another to indicate the quantity of a given part in an illustration.

Service Assembly Reference Numbers

Parts in service assemblies have reference numbers in the form **a:b**. The **a** represents the reference number of the entire service assembly and the **b** represents a sequential number unique to each part within the service assembly.

For example, a wheel assembly might be identified by reference number **6**, the tire by **6:1**, the valve by **6:2**, and the wheel by **6:3**. When you order the assembly identified by reference number **6**, you receive all parts identified by reference numbers **6:1**, **6:2**, and **6:3**. However, you may also order any part individually.

Reference numbers of this type appear in illustrations and in part lists.

Reference Numbers Indicating Quantity

In an illustration, if a reference number indicates more than one part, the reference number has the form **nX y**. The **n** represents the quantity of the part, the **X** is the multiplication symbol, and the **y** represents the reference number.

For example, in an illustration, the reference number **2X 37** means that two of the parts identified by reference number **37** are indicated.

Contents

Description	Page	Description	Page
Engine & Oil Cooler Assembly	3	Head / Valve / Breather	15
Pivot & Linkage Assembly	4	Ignition / Electrical	16
Handle Assembly	5	Blower Housing & Baffles	17
Control Panel Assembly	6	Starter System	18
Fuel Tank, Hydro Pumps, & Pto Assembly	7	Carburetor / Fuel Pump	19
Hydraulic & Drive System Assembly	8	Engine Controls	20
Hydraulic & Drive System Assembly (cont.)	9	Air Cleaner Filtration	21
Battery Assembly	10	Exhaust	22
Clutch Assembly	11	Schematic	23-24
Crankshaft	12	Hydraulic Pump Assembly No. 95-1538	25
Crankcase	13	Traction Drive Motor	26
Oil / Pan Lubrication	14	Maintenance	27

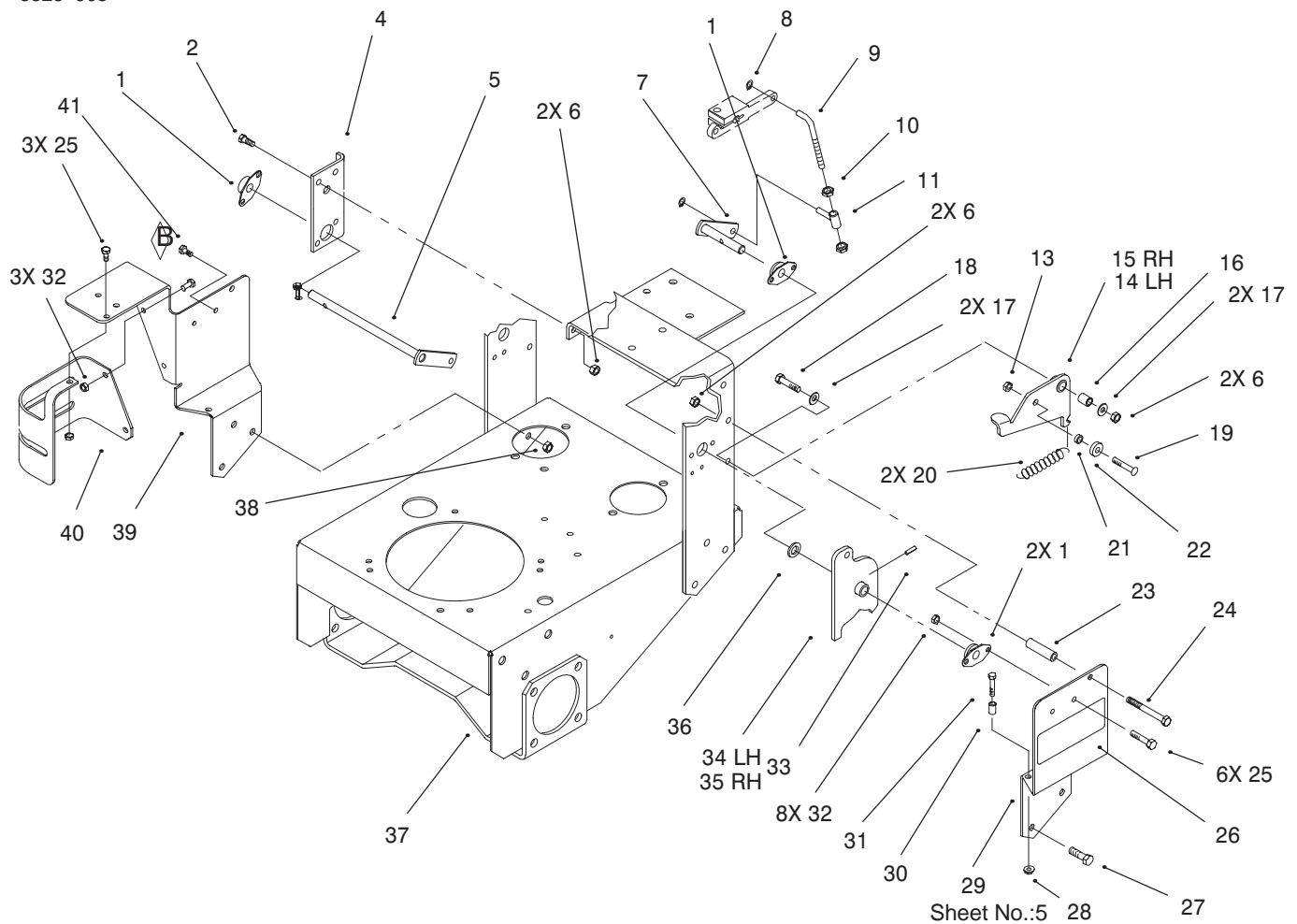
Accessories

Description	Model / Part No.	Description	Model / Part No.
36" Cutting Unit	Model No. 30136	Bagging Kit (For 36" Deck)	Model No. 30125
37" Recycler Deck	Model No. 30137	Bagging Kit (For 37" Deck)	
44" Cutting Unit	Model No. 30144	(Cloth Bag)	Model No. 30129
44" Recycler Deck	Model No. 30146	Bagging Kit (For 37" Deck)	
52" Cutting Unit	Model No. 30152	(Steel Hopper)	Model No. 30130
52" Recycler Deck	Model No. 30154	Bagging Kit	
62" Cutting Unit	Model No. 30162	(For 44"/52" Decks)	Model No. 30128
		Steerable Sulky	Model No. 30123

Part Description Abbreviations

Part descriptions in this catalog may include the following abbreviations.

Abbreviation	Meaning	Abbreviation	Meaning
AR	as required	INC	incorporated
ASM	assembly	LH	left hand
CARR	carriage	NI	nylon insert
DEG	degrees	PPH	Phillips pan head
FH	flat head	PTH	Phillips truss head
GA	gauge	PTO	power take off
HF	hex flange	RH	right hand
HH	hex head	SFH	slotted fillister head
HHF	hex head flange	SHH	slotted hex head
HLH	hex lag head	SQH	square head
HJ	hex jam	SHWH	slotted hex washer head
HOC	height-of-cut	SPH	slotted pan head
HS	hex socket	SRH	slotted round head
HSBH	hex socket button head	STD	standard
HSFH	hex socket flat head	TAP	self tapping
HSH	hex socket head	TTH	Torx truss head
HWH	hex washer head	WH	wing head
HWHTF	hex washer head thread forming		

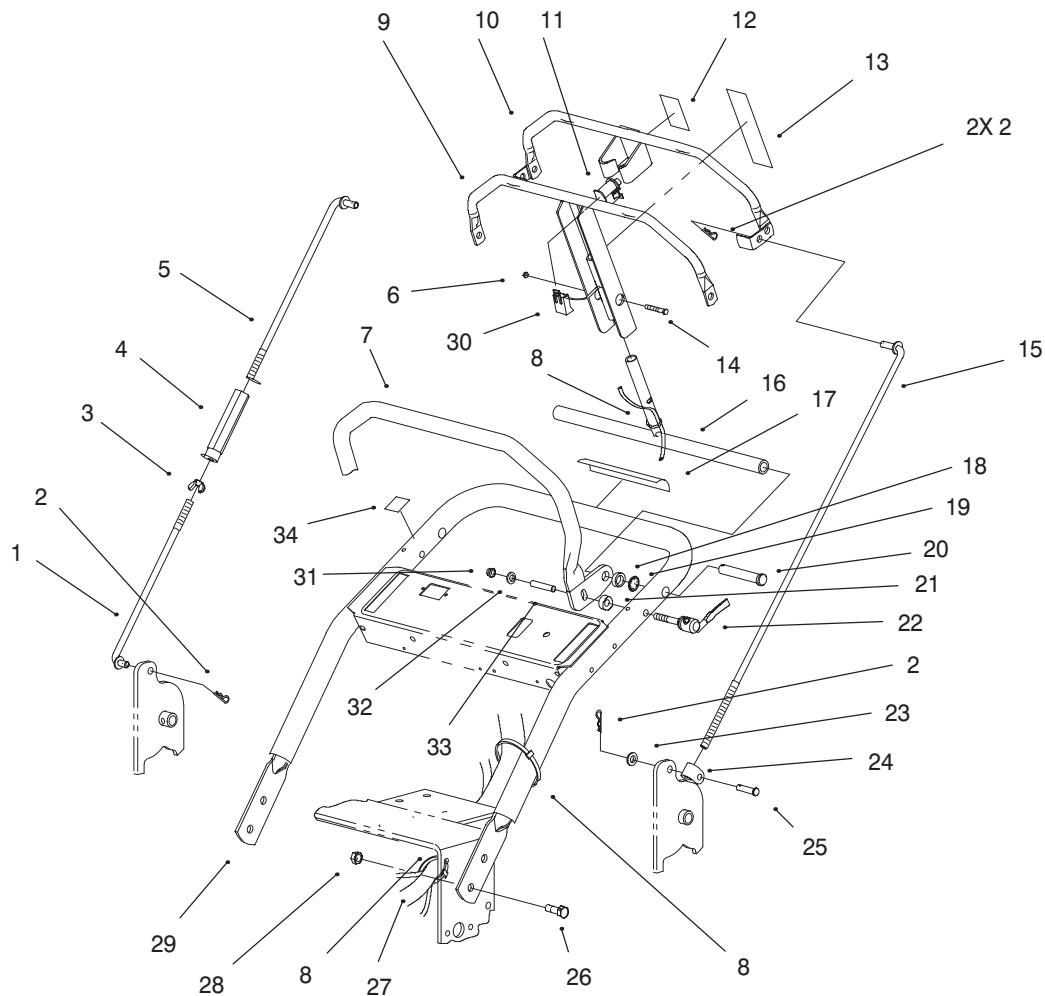


Sheet No.:5

Pivot & Linkage Assembly

Ref. No.	Part No.	Qty.	Description
1	82-4130	4	Side Flange Bearing ASM
2	322-5	2	Screw-HH
4	82-4210-01	1	Bracket - Bushing
5	94-9059	1	Wa - RH Pivot Lever
6	3296-29	6	Nut-Lock, NI
7	94-9057	1	Wa - LH Pivot Lever
8	32151-3	4	Ring-Grip Ex
9	94-9093	2	Rod - Link
10	3218-2	4	Nut-Jam
11	94-9062	2	Wa - Sleeve
13	3296-47	2	Nut-Lock, NI
14	82-4330-01	1	Detent Arm - LH
15	82-4340-01	1	Detent Arm - RH
16	82-4370	2	Detent Arm Bushing
17	3256-23	4	Washer-Flat
18	322-7	2	Screw-HH
19	3274-32	2	Soc Hd Capscrew
20	82-4160	2	Detent Spring
21	82-4240	2	Bearing Spacer
22	251-259	2	Bearing
23	82-3920	2	Reverse Stop
24	322-14	2	Screw-HH
25	321-3	9	Screw-HH
26	82-4600	2	Decal - Hydro
27	323-6	6	Screw-HH

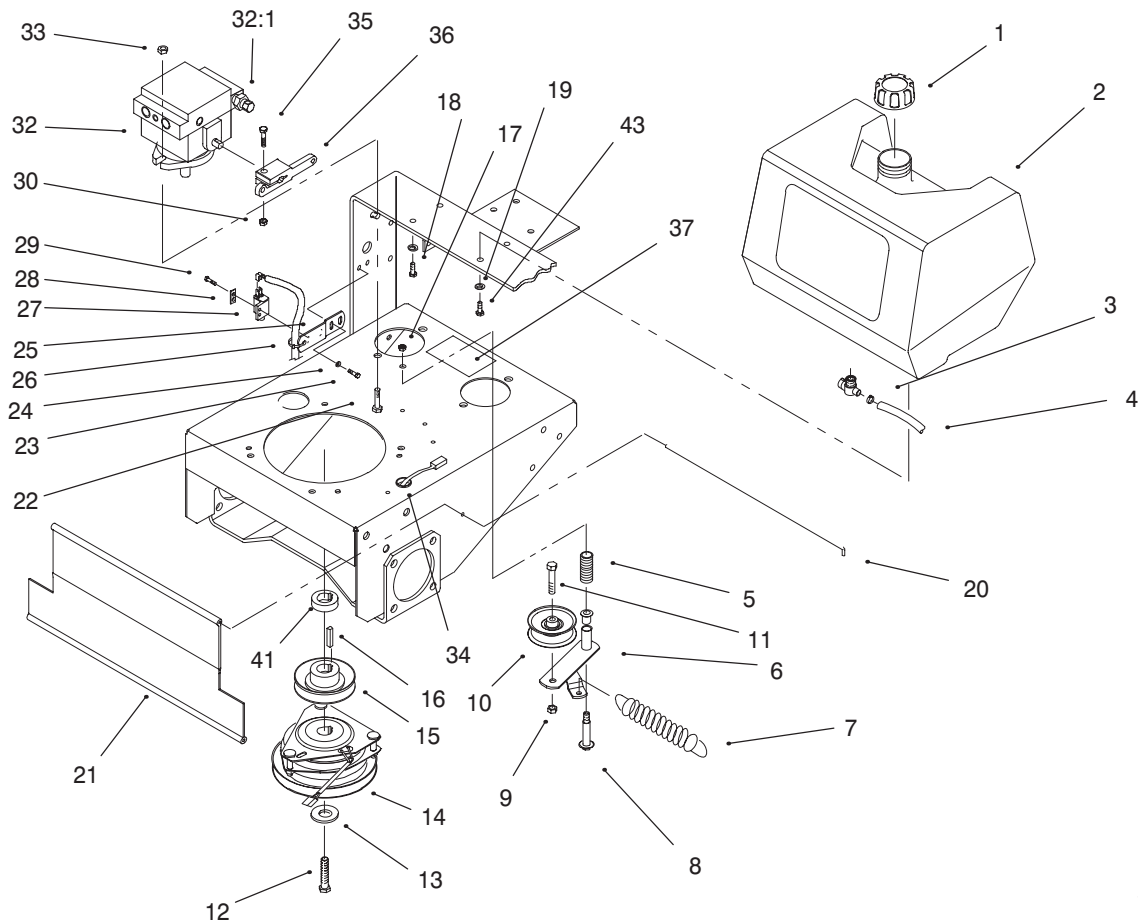
Ref. No.	Part No.	Qty.	Description
28	32128-10	2	Locknut-Flange
29	95-1530-01	1	Brkt - Pivot, LH
30	95-1516	2	Spacer - Tubular
31	321-8	2	Screw-HH
32	3296-42	11	Nut-Lock
33	32121-4	2	Pin-Roll
34	94-9054-01	1	Pivot Arm - LH
35	94-9061-01	1	Pivot Arm - RH
36	257-5	2	Washer-Thrust
37	94-9096-01	1	Frame Wa
38	3296-39	6	Nut-Lock, NI
39	95-1522-01	1	Brkt - Pivot, RH
40	95-5868-01	1	Guard - Filter
41	321-3	2	Screw-HH



Sheet No.:6

Handle Assembly

Ref. No.	Part No.	Qty.	Description	Ref. No.	Part No.	Qty.	Description
1	95-1506	1	Rod – Lower Control	26	3234-11	4	Screw-HHF
2	3290-307	4	Hairpin	27	100-6461	1	Harness- Wire,20hp Hydro
3	32103-3	1	Wing Nut	28	32128-21	4	Nut-HF
4	95-1504	1	Turnbuckle	29	95-5856-03	1	Handle – Upper
5	95-1505	1	Rod – Upper Control	30	218-595	1	Connector-Body
6	32153-1	1	Nut-Lock	31	33023-00	2	Nut-Lock NI
7	95-1536-03	1	ASM – Handle	32	3290-436	2	Belleville Washer
8	3290-378	3	Tie-Cable	33	95-5854	2	Sleeve
9	95-1507-03	1	Control Bar ASM	34	95-5862	1	Decal – Speed Lock
10	95-1510-03	1	Bail ASM				
11	82-2190	1	Switch-Bail				
12	95-1523	1	Decal – Traction Drive				
13	95-1524	1	Decal – T Bar				
14	32105-12	1	Screw				
15	94-9095	1	Rod – Control				
16	95-1513-03	1	Pivot ASM				
17	82-4590	1	Decal – Warning				
18	95-5855	2	Spacer				
19	32151-80	2	Push-On Circular				
20	283-55	2	Pin-Clevis				
21	82-3840	2	Spacer				
22	95-5853	2	ASM – Quick Release Lock				
23	3256-23	1	Washer-Flat				
24	74-0521	1	Fitting-Rod				
25	283-6	1	Pin-Clevis				

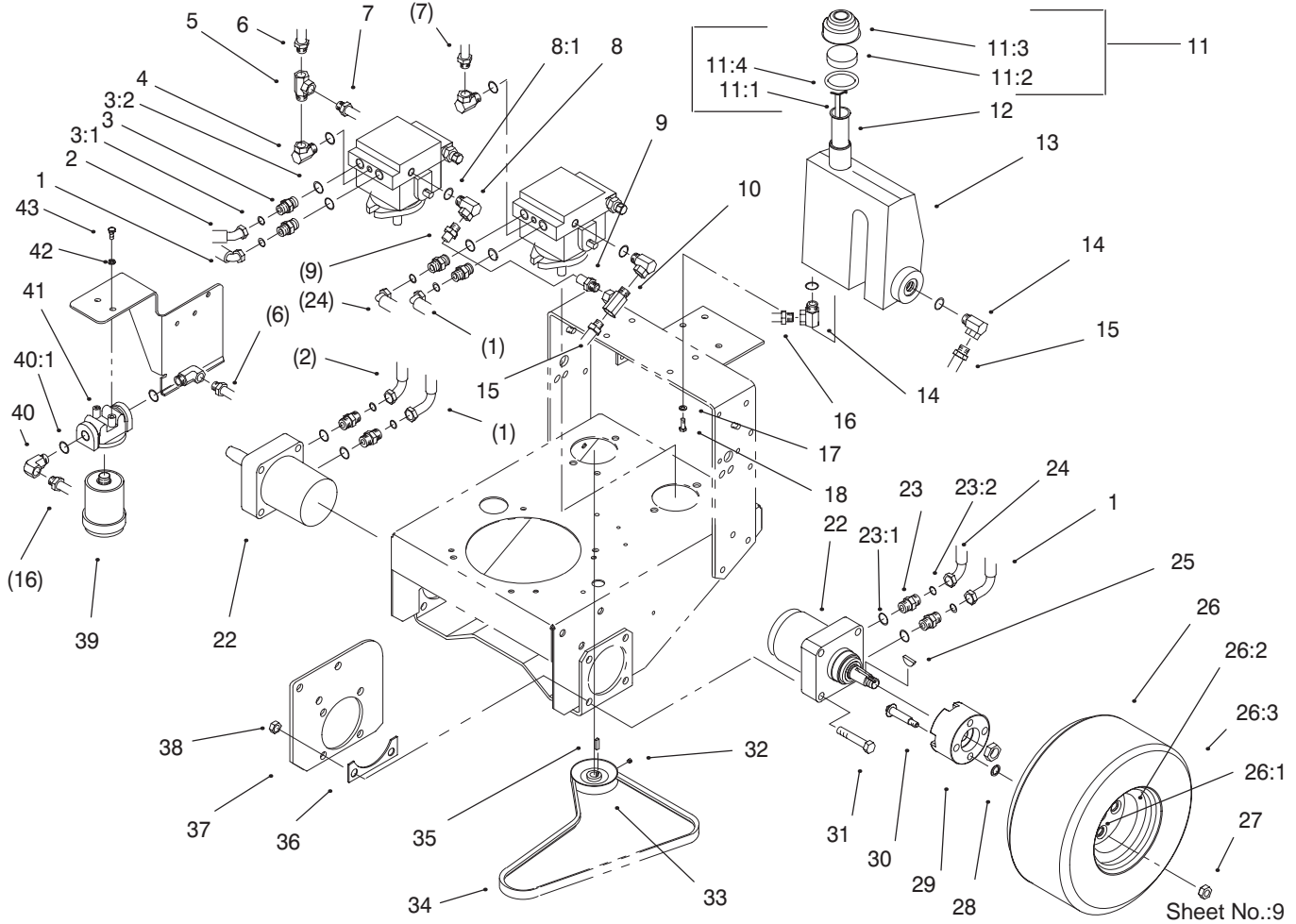


Sheet No.:8

Fuel Tank, Hydro Pumps, & Pto Assembly

Ref. No.	Part No.	Qty.	Description
1	55-3570	1	Gas Cap Assembly
2	95-2802	1	Tank - Fuel
3	2412-98	2	Clamp
4	82-4390	1	Gas Hose
5	88-1880	1	Compression Spring
6	86-4770	1	Idler Lever ASM
7	68-2190	1	Spring-Extension
8	27-6230	1	Bolt-Wheel
9	3296-39	1	Nut-Lock, NI
10	62-4540	1	Pulley
11	323-9	1	Screw-HH
12	3212-9	1	Screw-HH
13	112843	1	Washer
14	54-3200	1	Clutch/Brake
15	44-5940	1	Pulley
16	5-0930	1	Key
17	3296-6	1	Nut-Lock, NI
18	322-3	2	Screw-HH
19	3253-4	4	Washer
20	95-1529	1	Rod - Shield
21	95-1526	1	Shield - Trailing
22	324-5	4	Screw-HH
23	32144-4	4	Screw-HH
24	3256-1	4	Washer-Flat
25	82-4580-03	2	Bracket - Neutral
26	3290-378	2	Tie-Cable

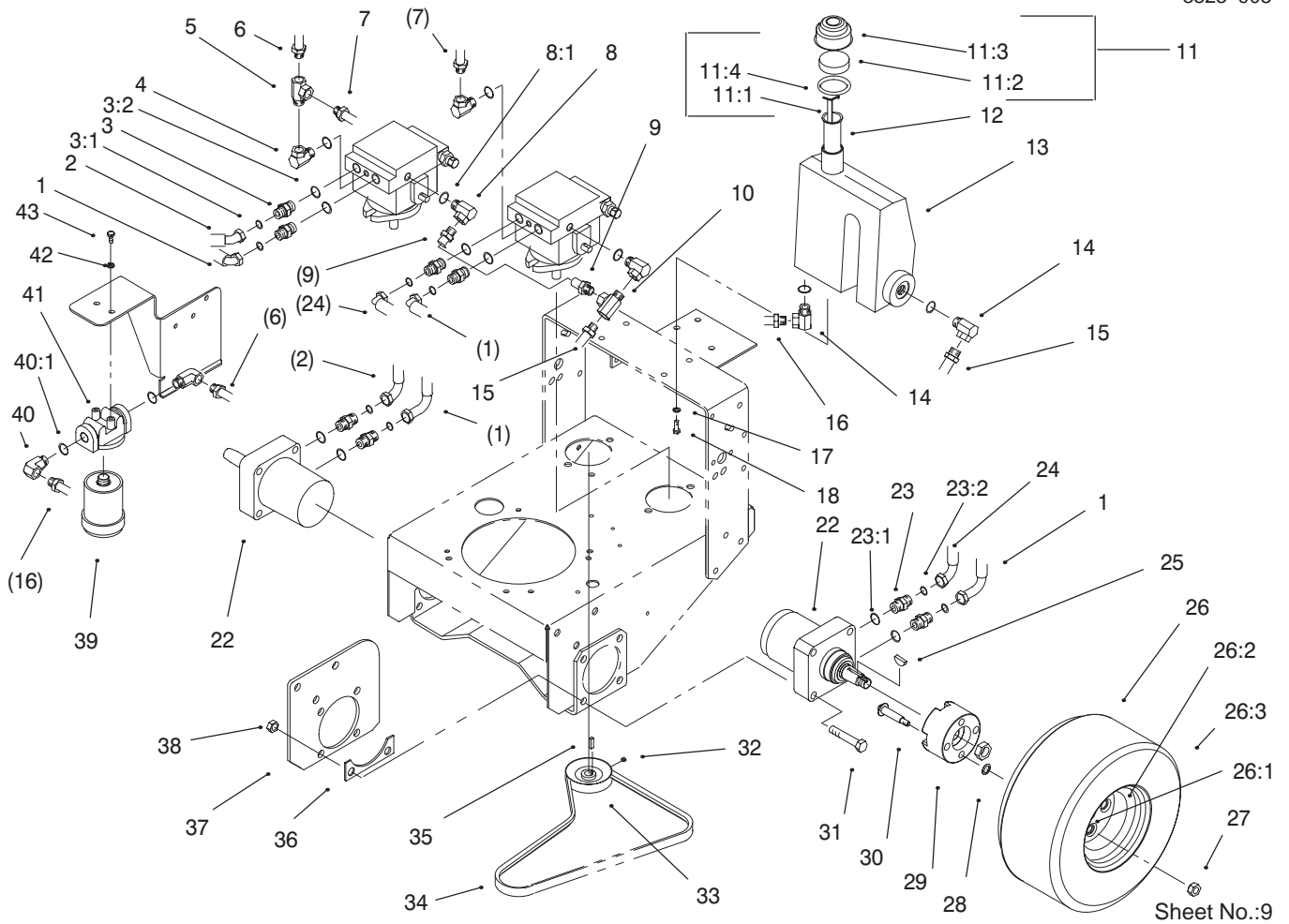
Ref. No.	Part No.	Qty.	Description
27	65-7410	2	Switch - Single Pole
28	82-4570	2	Switch Plate
29	32144-1	4	Screw-Taptite
30	3296-29	2	Nut-Lock, NI
32	95-1538	2	ASM - Hydraulic Pump
32:1	95-1539	2	Valve ASM
33	32128-42	4	Nut-Hex, Flange
34	237-124	1	Grommet
35	322-7	2	Screw-HH
36	82-3790	2	Pump Arm
37	95-1543	1	Decal - Valve Adjustment
41	93-1177	1	Spacer - Pulley
43	322-4	2	Screw-HH



Hydraulic & Drive System Assembly

Ref. No.	Part No.	Qty.	Description
1	82-4550	2	Hydraulic Hose ASM
2	82-4540	1	Hydraulic Hose ASM
3	340-4	4	Adapter
3:1	237-30	4	O-Ring
3:2	237-79	4	O-Ring
4	354-116	2	Female Pipe Swivel
5	2815-16	1	Street Tee
6	95-5880	1	ASM - Hydraulic Hose
7	82-4170	1	Hydraulic Hose ASM
8	354-115	2	Female Pipe Swivel
8:1	237-42	A/R	O-Ring
9	82-4201	1	Hydraulic Hose ASM
10	2815-15	1	Street Tee
11	76-0200	1	Oil Cap Assy
11:1	76-0240	1	Dipstick Wa
11:2	76-0220	1	Foam - Filter, Oil Cap
11:3	76-0190	1	Oil Cap
11:4	237-71	1	O-Ring
12	29-0590	1	Filler Screen
13	95-1532	1	Reservoir - Oil
14	354-118	2	Hydraulic Fitting
15	82-4190	2	Hydraulic Hose ASM
16	82-4200	1	Hydraulic Hose ASM
17	3253-4	3	Washer
18	322-3	3	Screw-HH

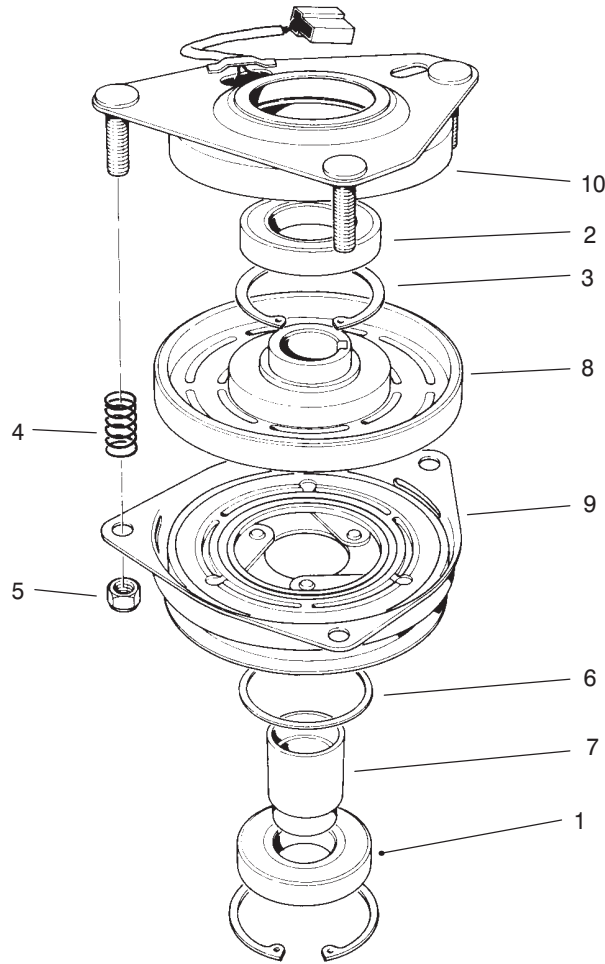
Ref. No.	Part No.	Qty.	Description
22	82-8230	2	Wheel Motor
23	340-6	4	Fitting-Straight
23:1	237-30	4	O-Ring
23:2	237-80	4	O-Ring
24	82-4560	1	Hydraulic Hose ASM
25	3257-8	2	Woodruff Key
26	94-9664	2	Assembly - Wheel/Tire
26:1	232-27	2	Valve Stem & Cap ASM
26:2	242-87	2	Wheel
26:3	231-117	2	Tire-15 X 6.4
27	242-50	8	Nut-Lug
28	32112-17	8	Pushnut
29	82-3830	2	Wheel Hub
30	3213-8	8	Screw-HH
31	325-11	8	Screw-HH
32	3241-5	4	Screw-Set
33	95-1528	2	Pulley - Pump
34	82-4110	1	V-Belt
35	80-6090	2	Key - Pump
36	86-4740-01	2	Spacer - Frame
37	86-4730-01	2	Plate - Frame
38	3296-23	8	Nut-Lock, NI
39	67-8110	2	Trans Oil Filter
40	354-117	2	Hydraulic Fitting



Hydraulic & Drive System Assembly (cont.)

Ref. No.	Part No.	Qty.	Description
40:1	237-79	2	O-Ring
41	86-9080	1	Filter Head
42	3253-3	2	Washer-Lock/Sp
43	321-3	2	Screw-HH

Ref. No.	Part No.	Qty.	Description

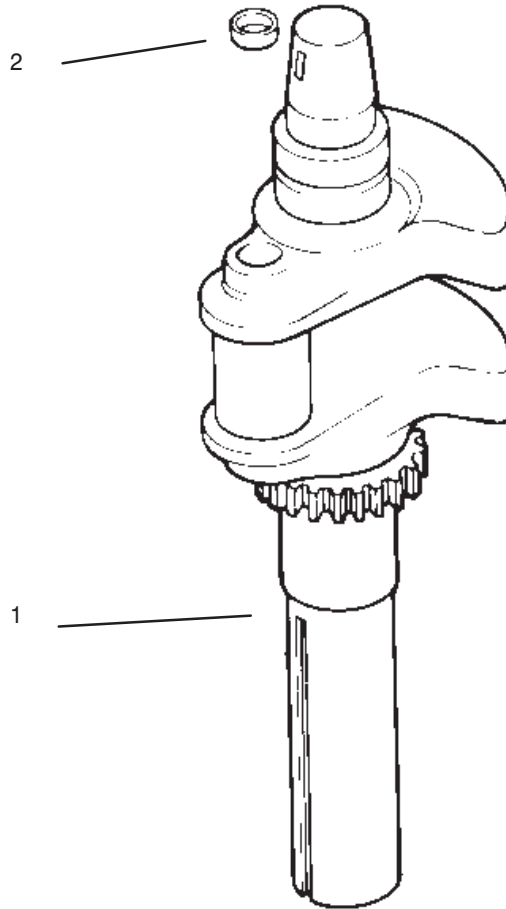


Sheet No.:A1

Clutch Assembly

Ref. No.	Part No.	Qty.	Description
1	251-291	1	Pulley Brg
2	251-292	1	Field Brg
3	44-8310	2	Retaining Ring
4	44-8320	3	Spring
5	3296-6	3	Nut-Lock, NI
6	44-8330	1	Spacer-Pulley Brg
7	44-8340	1	Bearing Collar
8	44-8360	1	Field Coil, Rotor/Brg ASM
9	44-8370	1	Armature/Pulley/Brg
10	54-0230	1	Field ASM/Brg

Ref. No.	Part No.	Qty.	Description

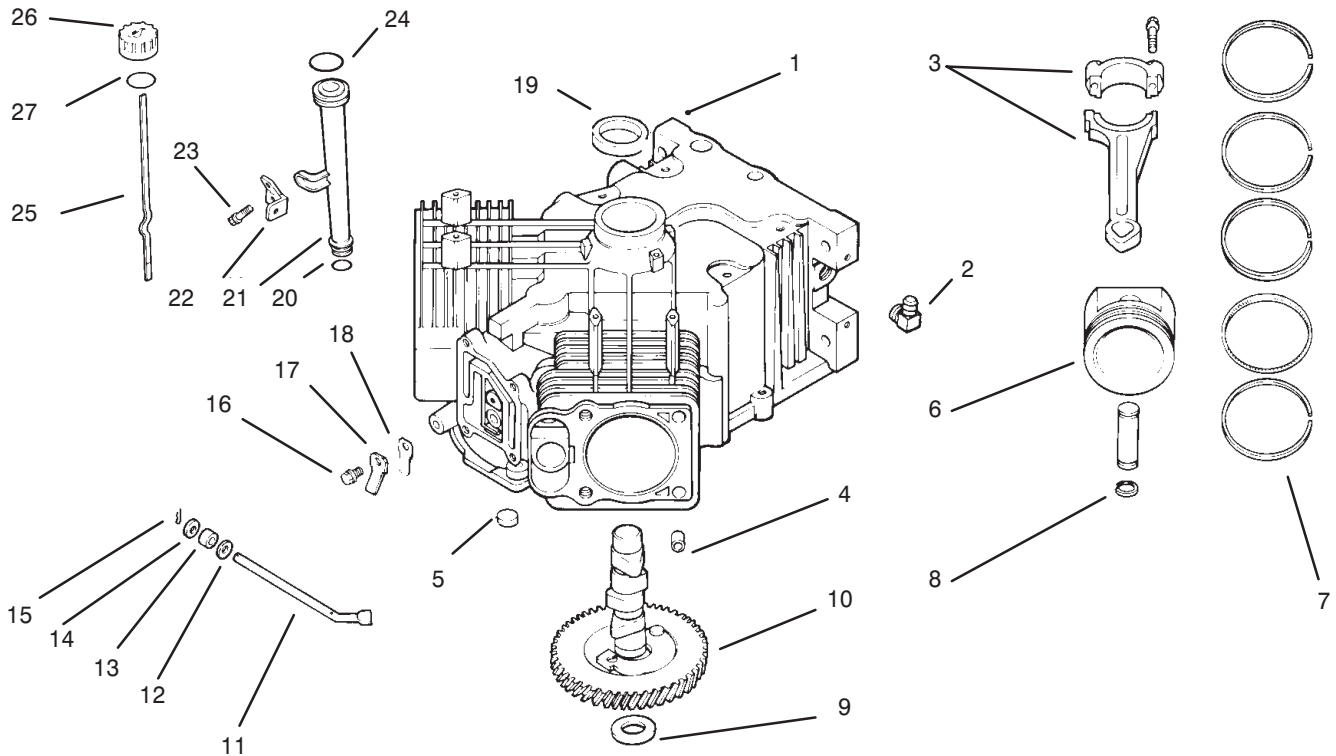


C-2159

Crankshaft

Ref. No.	Part No.	Description	No. Used
1	24 014 80	Crankshaft	1
2	52 139 09	Plug – Cup	

Ref. No.	Part No.	Description	No. Used



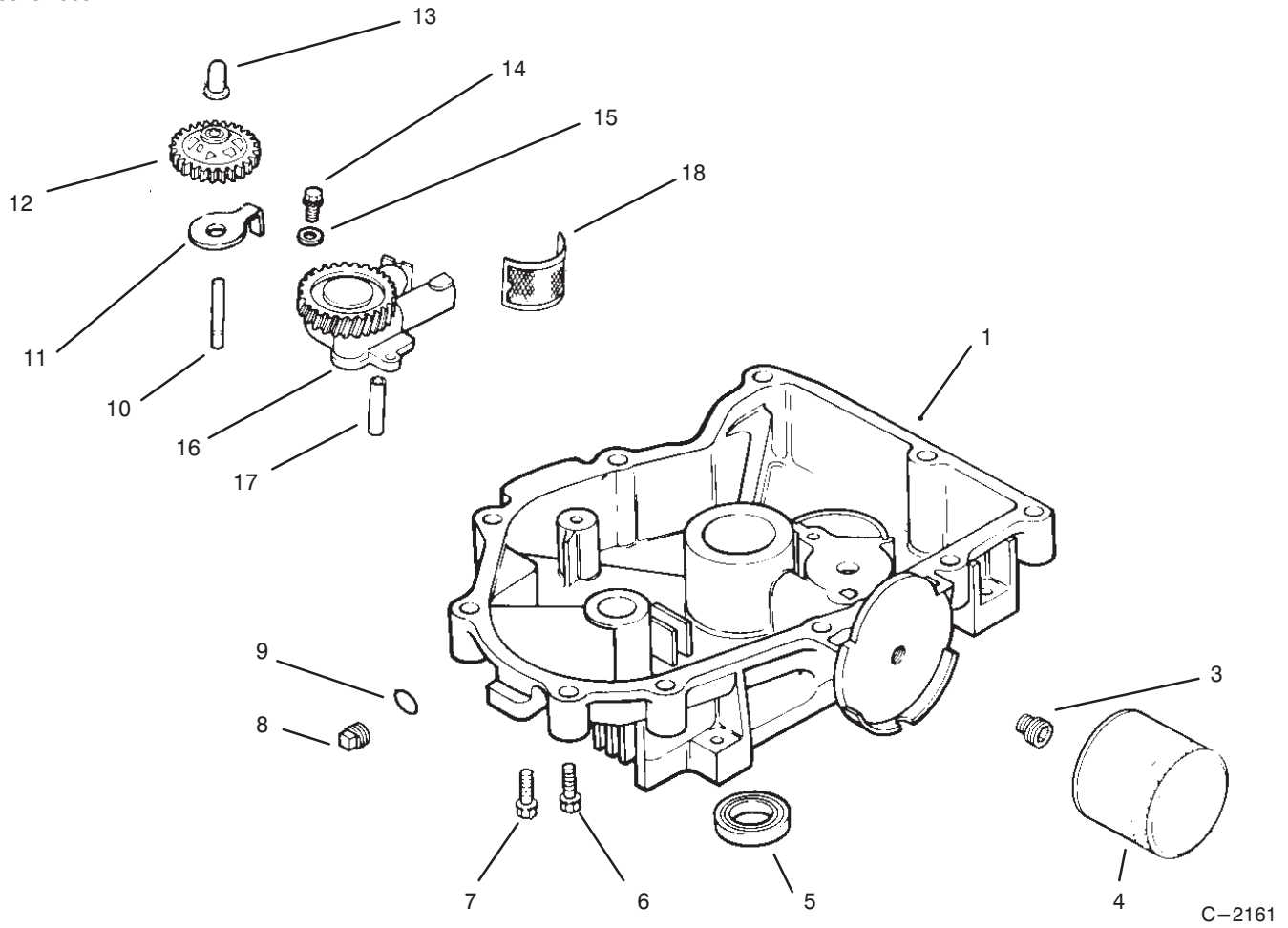
C-2160

Crankcase

Ref. No.	Part No.	Description	No. Used
1	24 782 05	Cylinder Block	1
2	24 294 03	Fitting	1
3	24 067 05	Rod – Connecting (Std)	2
*	24 067 06	Rod – Connecting (.25)	2
4	12 380 03	Pin – Locating	6
5	52 139 09	Plug – Cup	1
6	24 874 01	Set – Piston w/Ring (Incl. Ref. #7-8)	2
*	24 874 02	Set – Piston w/Ring (.25) (Incl. Ref. #7-8)	2
*	24 874 03	Set – Piston w/Ring (.50) (Incl. Ref. #7-8)	2
7	24 108 01	Set – Ring (Std)	2
*	24 108 02	Set – Ring (.25)	2
*	24 108 03	Set – Ring (.50)	2
8	24 018 01	Retainer – Piston Pin	4
9	12 422 09	Shim – Camshaft (Green)	A/R
*	12 422 13	Shim – Camshaft (Black)	A/R
*	12 422 07	Shim – Camshaft (White)	A/R
*	12 422 08	Shim – Camshaft (Blue)	A/R
*	12 422 10	Shim – Camshaft (Yellow)	A/R
*	12 422 11	Shim – Camshaft (Red)	A/R

Ref. No.	Part No.	Description	No. Used
*	12 422 12	Shim – Camshaft (Gray)	A/R
10	24 012 05	Camshaft	1
11	24 144 01	Shaft – Governor Cross	1
12	X-25-63	Washer	1
13	12 032 01	Seal – Governor Cross	1
14	X-25-102	Washer	1
15	12 380 04	Pin – Hitch	1
16	M-0545010	Screw	2
17	24 018 04	Retainer – Reed	2
18	24 402 05	Reed – Breather	2
19	24 032 01	Seal – Oil	1
20	12 153 01	"O"Ring	1
21	12 123 04	Tube – Oil Fill	1
22	24 126 19	Bracket – Fill Tube	1
23	SM-0549016	Screw	1
24	12 153 02	"O"Ring	1
25	24 038 04	Dipstick Assembly (Incl. Ref. # 26-27)	1
26	25 755 13	Kit – Fill Cap (Incl. Ref. # 27)	1
27	12 153 03	"O"Ring	1

3323-903

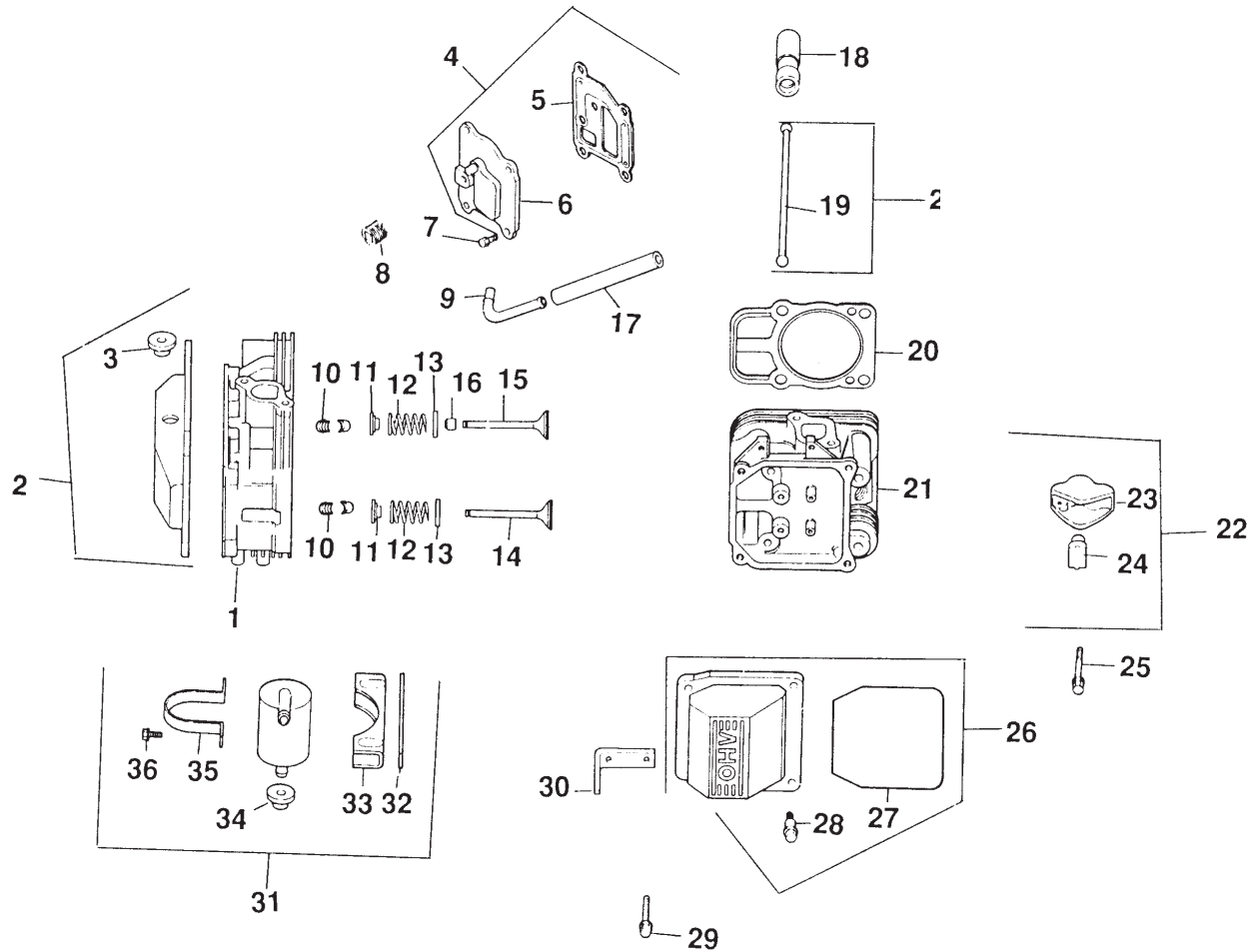


Oil / Pan Lubrication

Ref. No.	Part No.	Description	No. Used
1	24 199 07	Pan – Oil	1
3	24 136 01	Nipple – Oil Filter	1
4	12 050 01	Filter – Oil	1
5	52 032 08	Seal – Oil	1
6	24 086 17	Screw	1
7	24 086 16	Screw	9
8	X-75-10	Plug	1
9	24 153 08	"O"Ring	1
10	12 144 02	Shaft – Governor Gear	1
11	52 448 02	Tab – Locking	1

Ref. No.	Part No.	Description	No. Used
12	24 043 12	Kit – Governor Gear (Incl. Ref.#13)	1
13	12 380 01	Pin – Governor Regulating	1
14	M-645025	Screw	2
15	M-0631005	Washer	2
16	24 393 08	Oil Pump Assembly (Incl. Ref.#17)	1
17	24 123 05	Tube – Oil Pickup	1
18	25 162 07	Screen – Oil	1

*Not Illustrated

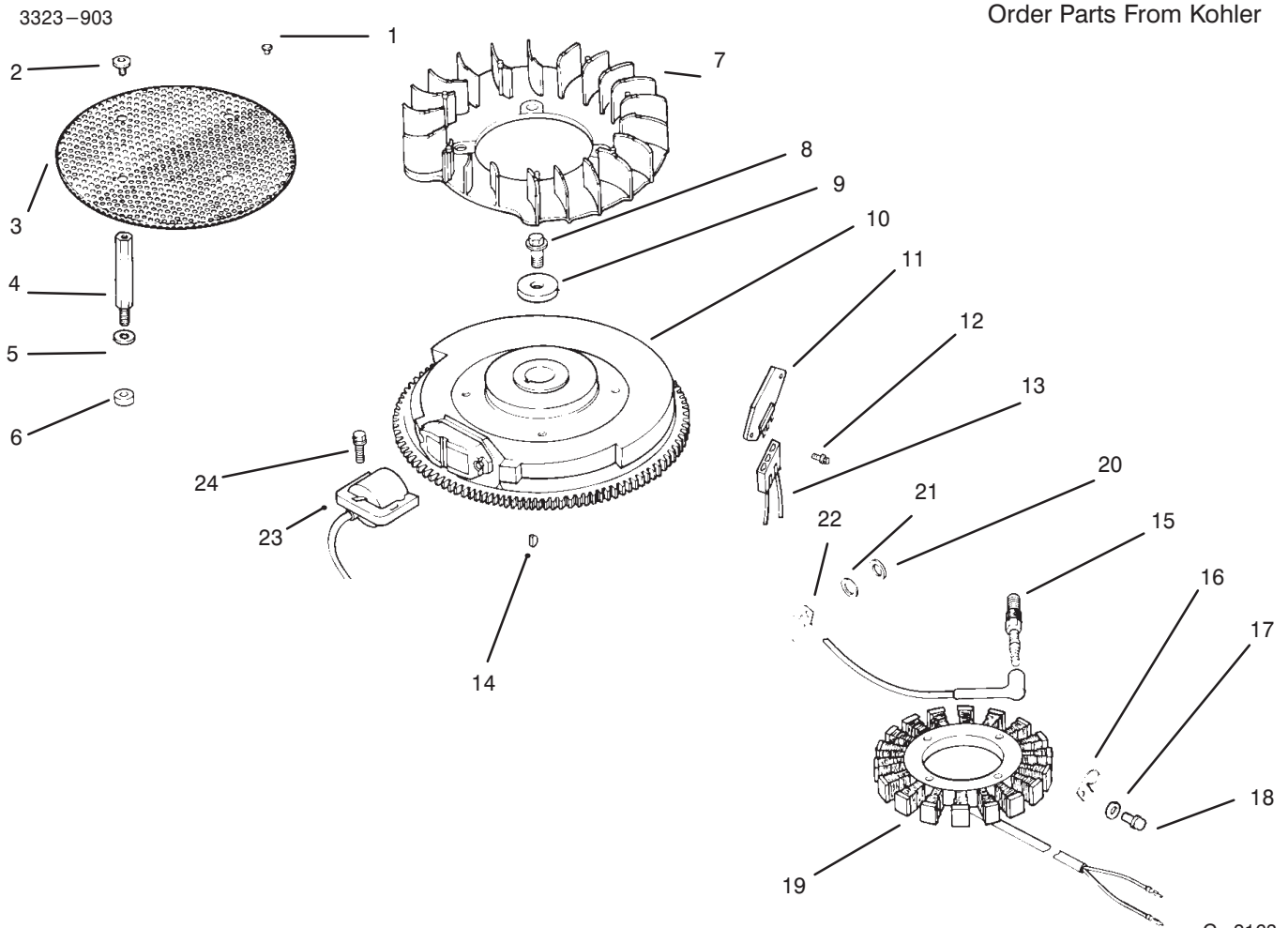


Head / Valve / Breather

Ref. No.	Part No.	Description	No. Used
1	24 318 11	Head Asm. # 1 Cyl.	1
2	24 755 76	Kit - Valve Cover/Breather (Incl. Ref.# 3 & 27-28)	1
3	25 313 02	Grommet - Rubber	1
4	24 033 03	Kit - Breather Cover Gasket (Incl. Ref.#5-6)	1
5	24 041 23	Gasket - Breather	1
6	24 096 15	Cover - Breather	1
7	M-0645020	Screw	4
8	X-75-23	Plug	1
9	24 294 01	Fitting	1
10	12 755 03	Kit - Retaining	4
11	12 173 01	Cap - Valve Spring	4
12	24 089 02	Spring - Valve	4
13	235011	Retainer - Spring	4
14	24 016 01	Valve - Exhaust (Std)	2
*	24 016 02	Valve - Exhaust (.25)	2
15	24 017 01	Valve - Intake (Std)	2
*	24 017 02	Valve - Intake (.25)	2
16	24 032 05	Seal - Valve Stem	2
17	24 326 03	Hose	1
18	12 351 01	Lifter - Valve	4

Ref. No.	Part No.	Description	No. Used
19	24 411 05	Rod - Push	4
20	24 041 08	Gasket - Cylinder Head	2
21	24 318 12	Head Assembly # 2 Cyl.	1
22	24 755 66	Kit - Valve Train (Incl. Ref.#19 & 23-24)	1
23	24 186 01	Arm - Rocker	4
24	24 599 01	Pivot - Rocker Arm	4
25	M-0640034	Screw	4
26	24 755 74	Kit - Valve Cover (Incl. Ref. # 27-28)	1
27	24 153 11	"O"Ring	1
28	24 086 32	Screw	4
29	12 086 16	Screw	8
30	24 445 01	Strap - Lifting	1
*31	24 755 57	Kit - Breather Separator (Incl. Ref. # 32-36)	1
32	24 112 12	Spacer	1
33	24 126 44	Bracket	1
34	24 313 02	Grommet - Rubber	1
35	24 445 02	Strap - Breather	1
36	SM-0545016	Screw	2

*Not Illustrated



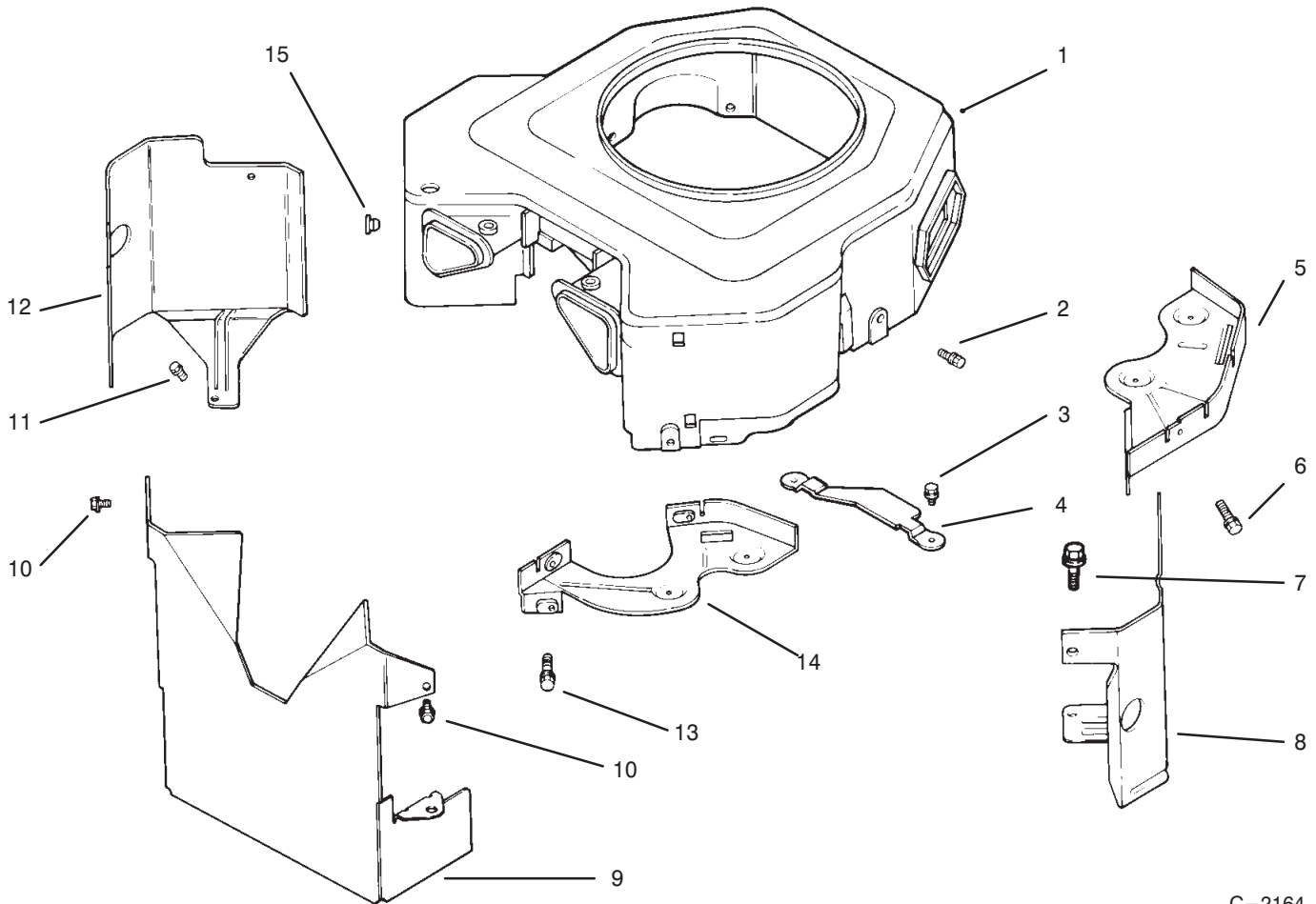
C-2163

Ignition / Electrical

Ref. No.	Part No.	Description	No. Used
1	25 086 43	Screw – Set	1
2	M-657010	Screw	4
3	24 162 20	Screen – Grass	1
4	24 072 01	Stud	4
5	X-25-53	Washer	8
6	12 112 01	Spacer – Fan	4
7	24 157 01	Fan	1
8	12 086 14	Screw	1
9	12 468 03	Washer	1
10	24 025 04	Flywheel Assembly	1
11	25 403 03	Rectifier – Regulator	1
12	24 086 18	Screw	2
13	236602	Connector	1

Ref. No.	Part No.	Description	No. Used
14	X-42-15	Key	1
15	12 132 02	Spark Plug	2
16	48 154 02	Clip – Cable	1
17	X-25-63	Washer	1
18	M-0548025	Screw	2
19	24 085 01	Stator – 15 amp	1
20	X-25-92	Washer	2
21	X-25-63	Washer	1
22	235173	Clip – Cable	1
23	24 584 01	Module – Ignition	2
24	SM-0545020	Screw	4
*	24 176 40	Harness – Wiring	1
	24 518 04	Lead – Green	1

*Not Illustrated



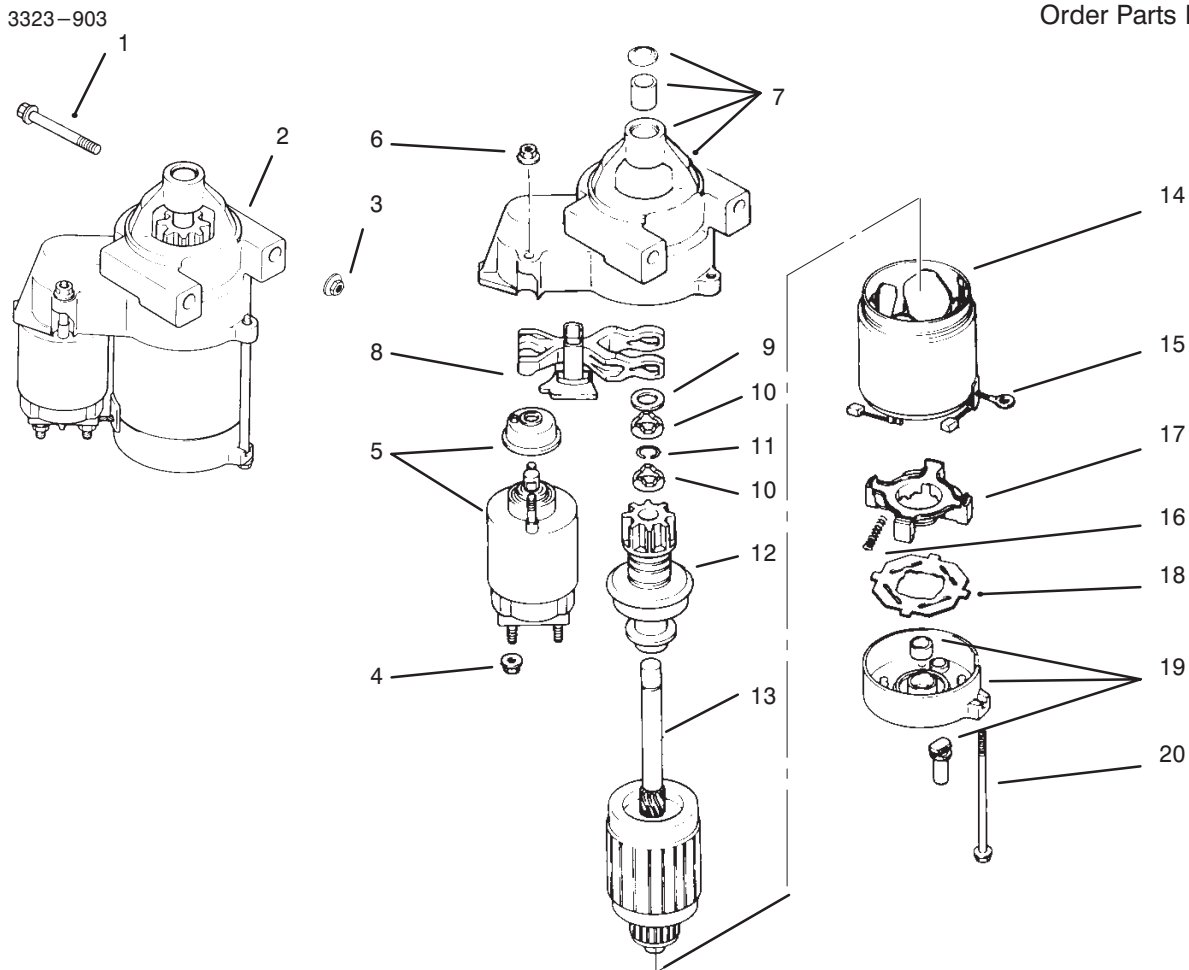
C-2164

Blower Housing & Baffles

Ref. No.	Part No.	Description	No. Used
1		Housing – Blower	1
2		Screw	3
3	SM-0545016	Screw	4
4	24 314 05	Guard – Flywheel	1
5	24 146 02	Plate – Backing # 2 Side	1
6	SM-0545020	Screw	2
7	M-0551016	Screw	1
8	24 063 20	Baffle Cyl. Barrel # 2 Side	1

Ref. No.	Part No.	Description	No. Used
9	24 063 29	Baffle – Valley	1
10	M-0549010	Screw	2
11	M-0549016	Screw	2
12	24 063 19	Baffle Cyl. Barrel # 1 Side	1
13		Screw	2
14	24 146 08	Plate – Backing # 1 Side	1
15	24 100 02	Nut – Plastic	2
*	24 113 12	Decal – Horse Power	1

* Not Illustrated

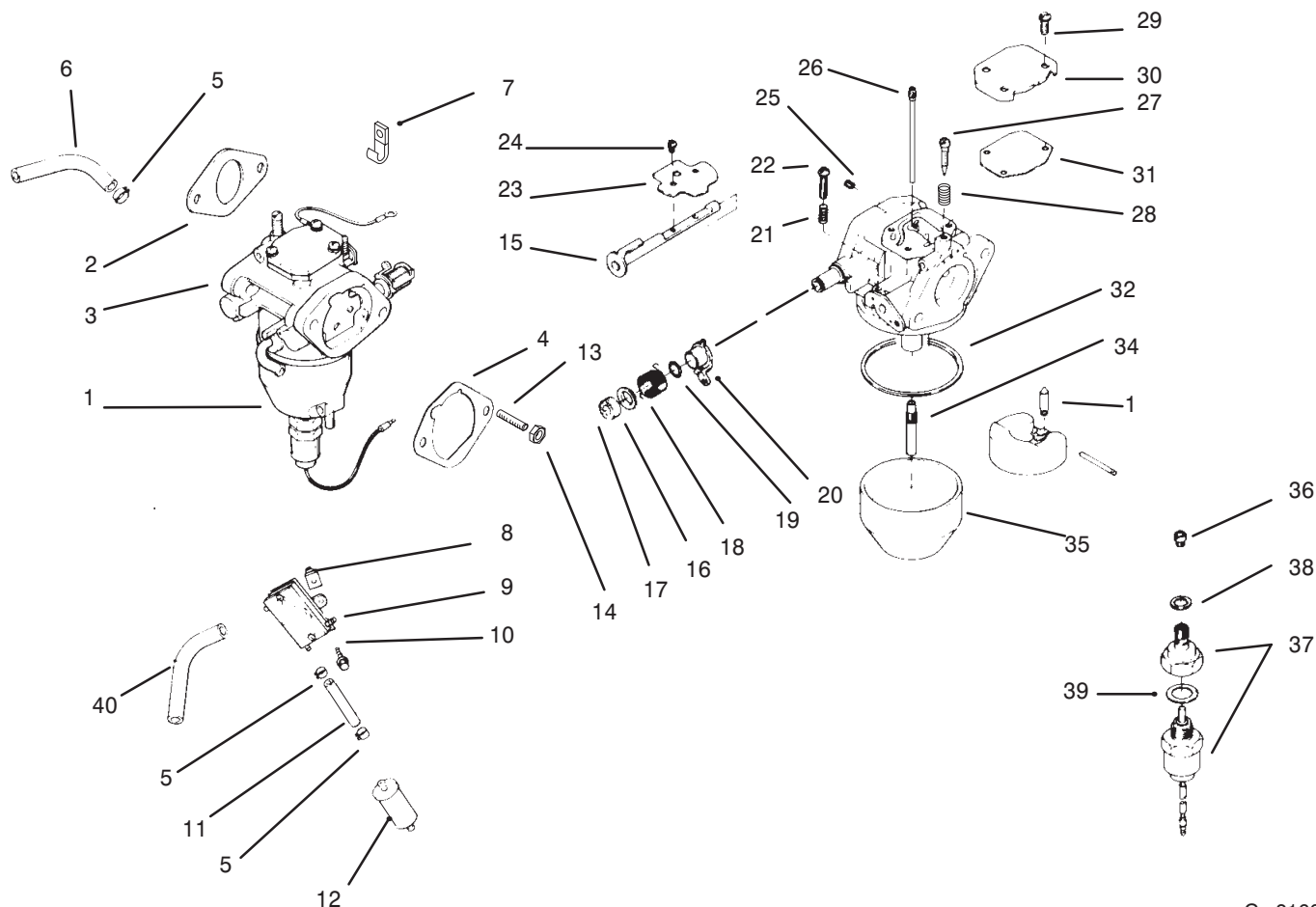


C-2165

Starter System

Ref. No.	Part No.	Description	No. Used
1	M-0839080	Screw	2
2	12 098 03	Starter Solenoid Shift (Incl. Ref. #4-20)	1
3	M-0841080	Nut	1
4	52 100 10	Nut	2
5	12 081 02	Cap – Drive End	1
6	52 100 09	Nut	1
7	52 435 02	Solenoid	1
8	12 090 10	Lever – Starter Drive	1
9	24 755 84	Washer	1
10	52 100 08	Nut	2

Ref. No.	Part No.	Description	No. Used
11	52 141 03	Ring – Retaining	1
12	12 239 01	Pinion – Drive	1
13	12 170 03	Armature – Starter	1
14	12 471 01	Frame	1
15	52 221 01	Kit – Brush (Incl. Ref. #16)	1
16	52 089 09	Spring – Brush	4
17	52 323 03	Holder – Brush	1
18	52 168 01	Insulator	1
19	12 301 01	Cap – Commutator End	1
20	52 211 05	Bolt	2



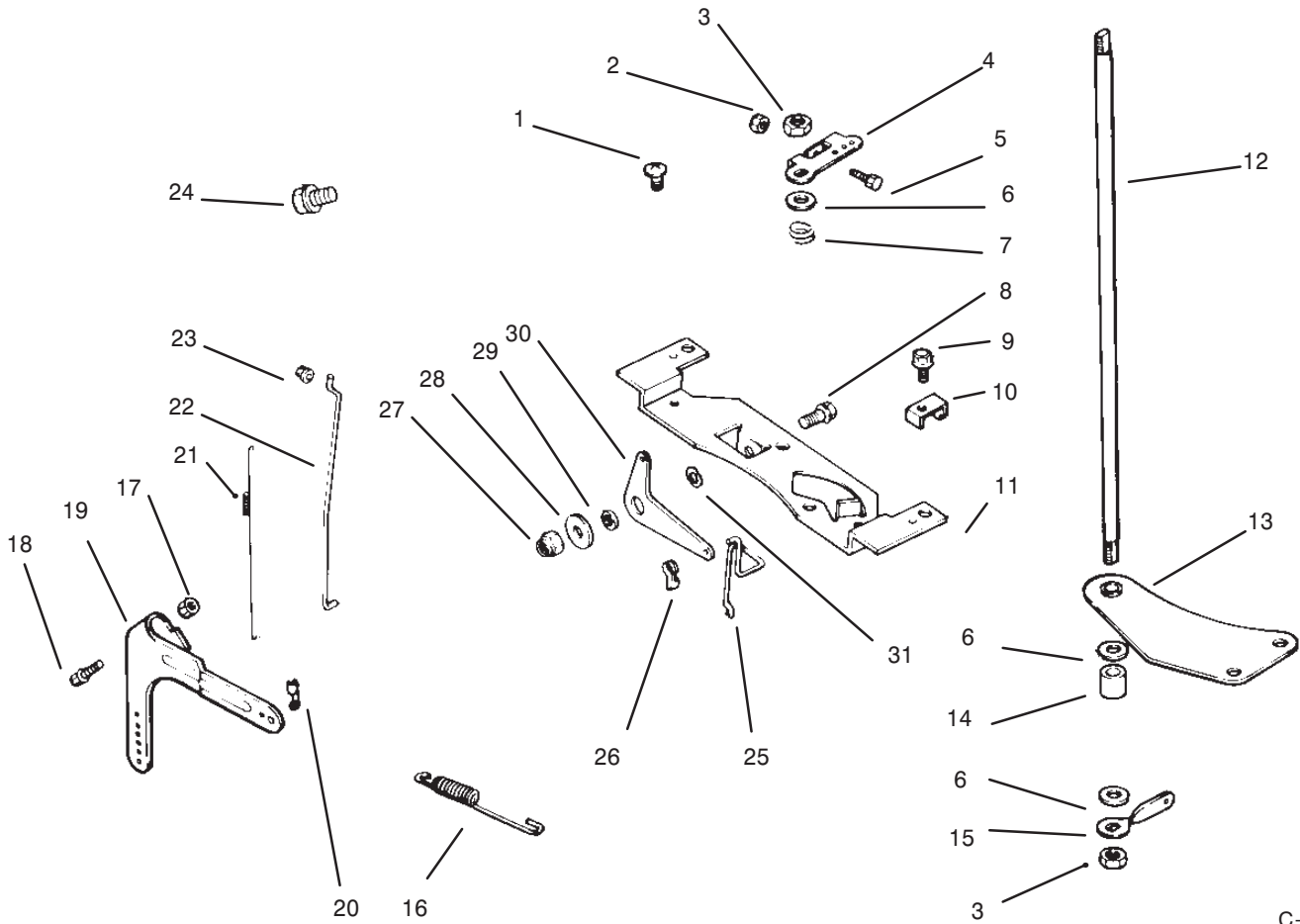
C-2166

Carburetor / Fuel Pump

Ref. No.	Part No.	Description	No. Used
1	24 853 17	Kit – Carburetor/w Gasket (Incl. Ref.#2-4)	1
2	24 041 15	Gasket – Carburetor	1
3	24 053 17	Carburetor (Ref. Only) (Inc. Ref. 15-39)	1
4	24 041 14	Gasket – Air Cleaner	1
5	X-426-9	Clamp – Hose	6
6	52 353 22	Line – Fuel 12”	2
7	47 154 01	Clip – Cable	1
8	24 100 01	Nut – Plastic	2
9	24 393 04	Pump – Fuel	1
10	24 086 12	Screw	2
11	24 353 03	Line – Fuel 10.5”	1
12	25 050 03	Filter – Fuel	1
13	M-0629128	Stud	2
14	M-0641060	Nut	2
15	24 144 15	Shaft – Choke	1
16	24 468 05	Washer	1
17	24 241 01	Collar – Coke	1
18	24 089 22	Spring – Choke Return	1
19	24 141 04	Ring – Choke Lever	1
20	24 090 10	Lever – Choke	1
21	24 089 24	Spring – Throttle Adjust	1
22	24 086 19	Screw – Throttle Adjust	1
23	24 462 13	Plate – Choke	1

Ref. No.	Part No.	Description	No. Used
24	24 086 20	Screw	4
25	24 337 27	Jet – Air Bleed	1
26	24 337 11	Jet – Slow	1
27	24 086 22	Screw	1
28	24 089 23	Spring – idler Screw	1
29	24 086 21	Screw	3
30	24 096 13	Cover – Passage	1
31	24 041 18	Gasket – Passage Cover	1
32	24 041 19	Gasket – Float Chamber	1
*33	24 757 05	Kit – Float Repair	1
34	24 369 01	Nozzle – Main	1
35	24 234 01	Chamber – Float	1
36	24 337 20	Jet – Main	1
37	24 755 15	Kit – Solenoid Valve (Incl. Ref. #38-39)	1
38	24 041 21	Gasket – Chamber Screw	1
39	24 041 20	Gasket – Solenoid	1
*	24 041 15	Gasket – Carburetor	1
*	24 755 25	Kit – High Altitude (1500-3000 Meters)	1
*	24 755 26	Kit – High Altitude (over 3000 Meters)	1
*	24 757 06	Kit – Carburetor Repair	1
40	15 353 04	Line – Fuel 11.5”	1

* Not Illustrated



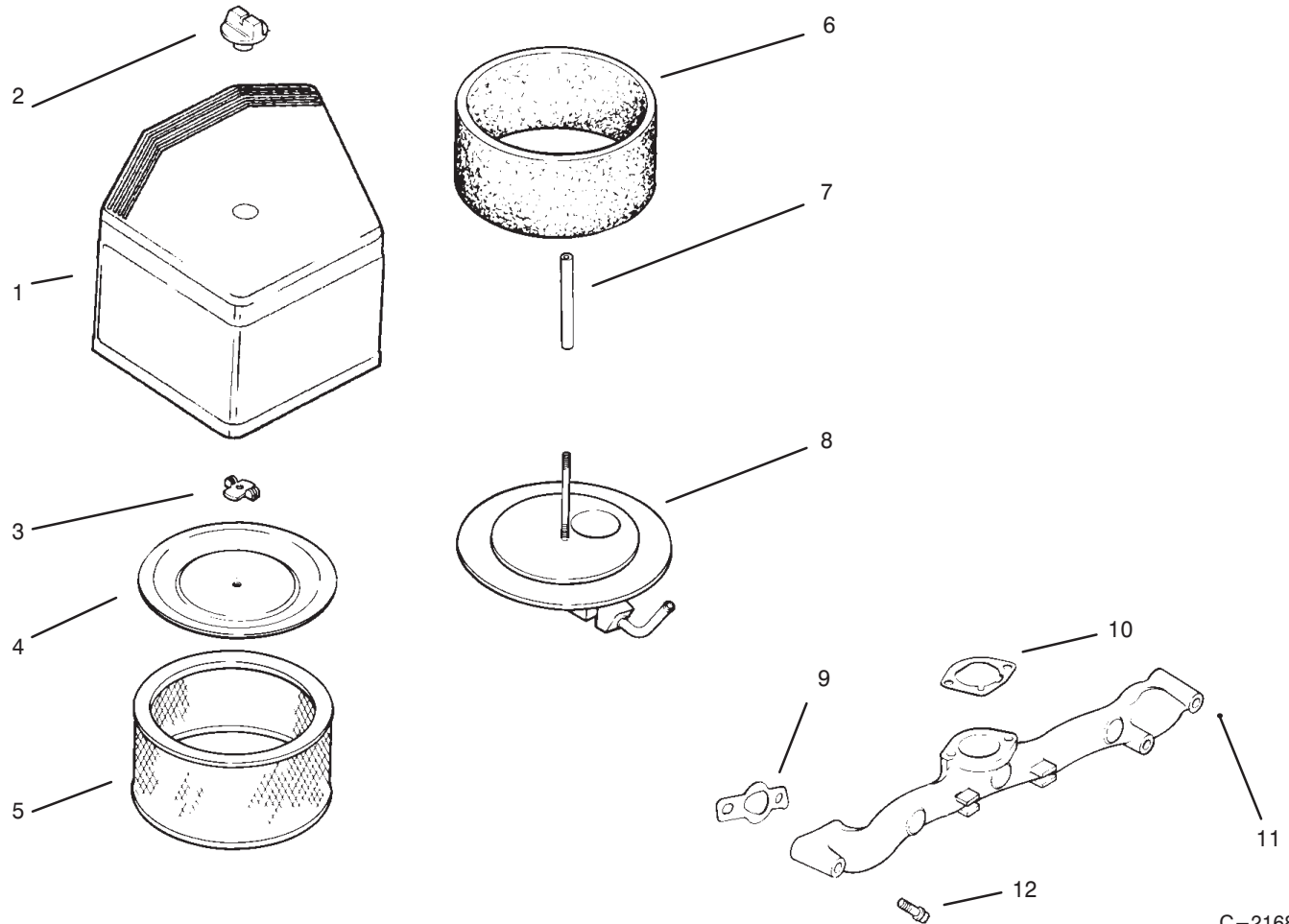
C-2167

Engine Controls

Ref. No.	Part No.	Description	No. Used
1	24 086 06	Screw	2
2	M-0446030	Nut	1
3	M-0647060	Nut	2
4	24 090 09	Lever – Throttle Control	1
5	M-0401030	Screw	1
6	X-25-72	Washer	3
7	24 089 20	Spring – Throttle Shaft	1
8	M-0639016	Screw	1
9	SM-054016	Screw	1
10	12 237 01	Clamp – Cable	2
11	24 126 47	Bracket – Control	1
12	24 144 11	Shaft – Throttle	1
13	24 126 17	Bracket – Throttle Shaft	1
14	24 122 10	Spacer	1
15	24 090 12	Lever – Throttle Control	1
16	24 089 18	Spring – Governor	1

Ref. No.	Part No.	Description	No. Used
17	M-0641060	Nut	1
18	SM-0642025	Screw	1
19	24 090 14	Lever – Governor	1
20	25 158 11	Bushing – Throttle	1
21	24 089 01	Spring – Linkage	1
22	24 079 04	Linkage – Throttle	1
23	25 158 10	Bushing – Linkage	1
24	SM-0645016	Screw	2
25	24 079 10	Linkage – Choke	1
26	25 158 11	Bushing – Throttle	1
27	M-0647060	Nut	1
28	X-25-52	Washer	1
29	25 431 01	Spacer	1
30	24 090 20	Lever – Choke	1
31	277341	Washer	1

*Not Illustrated



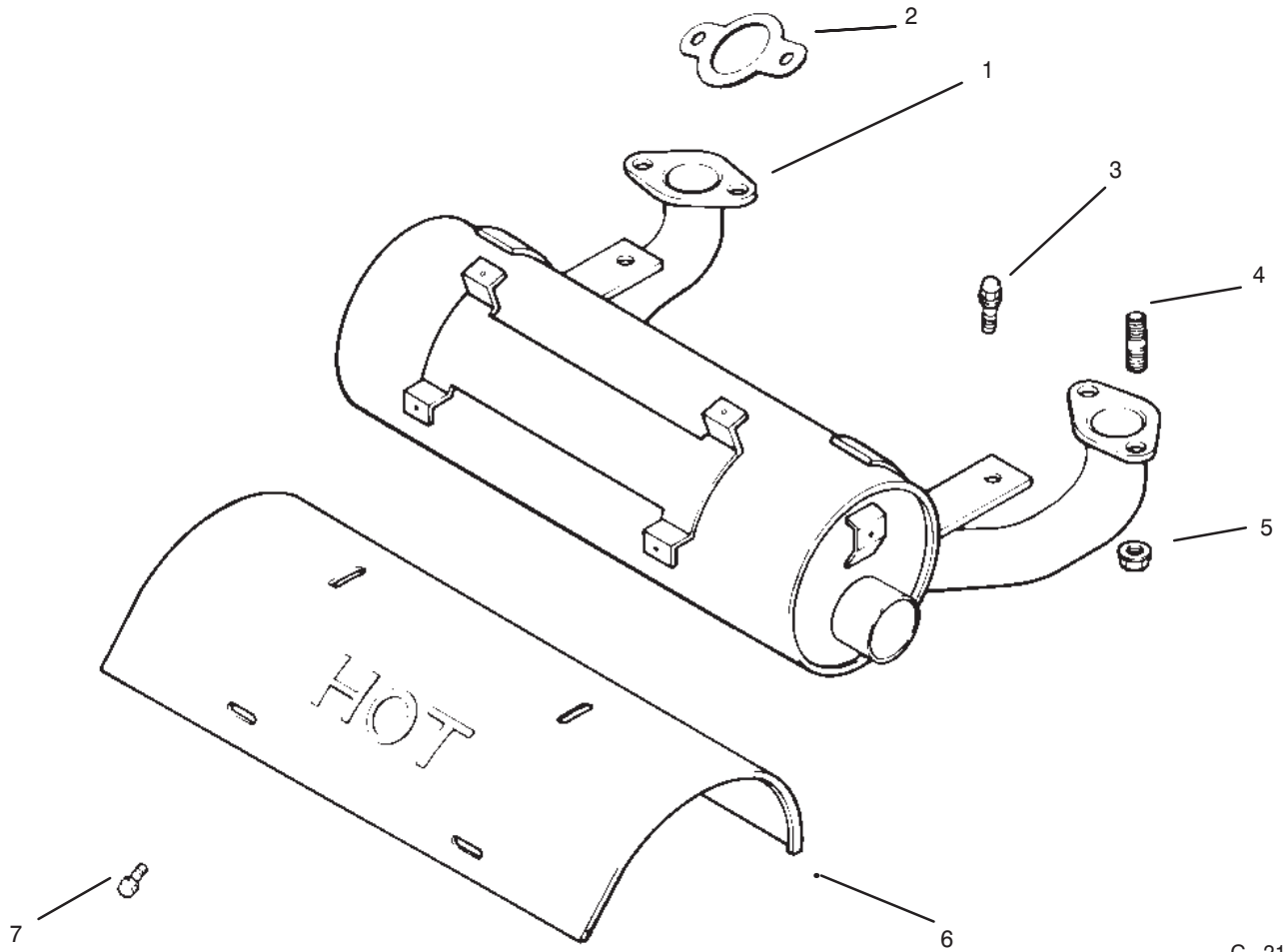
C-2168

Air Cleaner Filtration

Ref. No.	Part No.	Description	No. Used
1	24 743 10	Kit – Air Cleaner Cover (Incl. Ref.# 2)	1
2	25 341 02	Knob – Cover	1
3	12 100 01	Nut – Wing	1
4	52 082 04	Cover – Element	1
5	45 083 01	Element – Precleaner	1
6	45 083 02	Element	1

Ref. No.	Part No.	Description	No. Used
7	24 032 04	Seal	1
8	24 054 02	Elbow – Air Cleaner	1
9	24 041 01	Gasket – intake Manifold	2
10	24 041 14	Gasket – Air Cleaner Base	1
11	24 164 06	Manifold – Intake	1
12	M-0639055	Screw	4
*	24 113 14	Decal – Maintenance	1

*Not Illustrated



C-2169

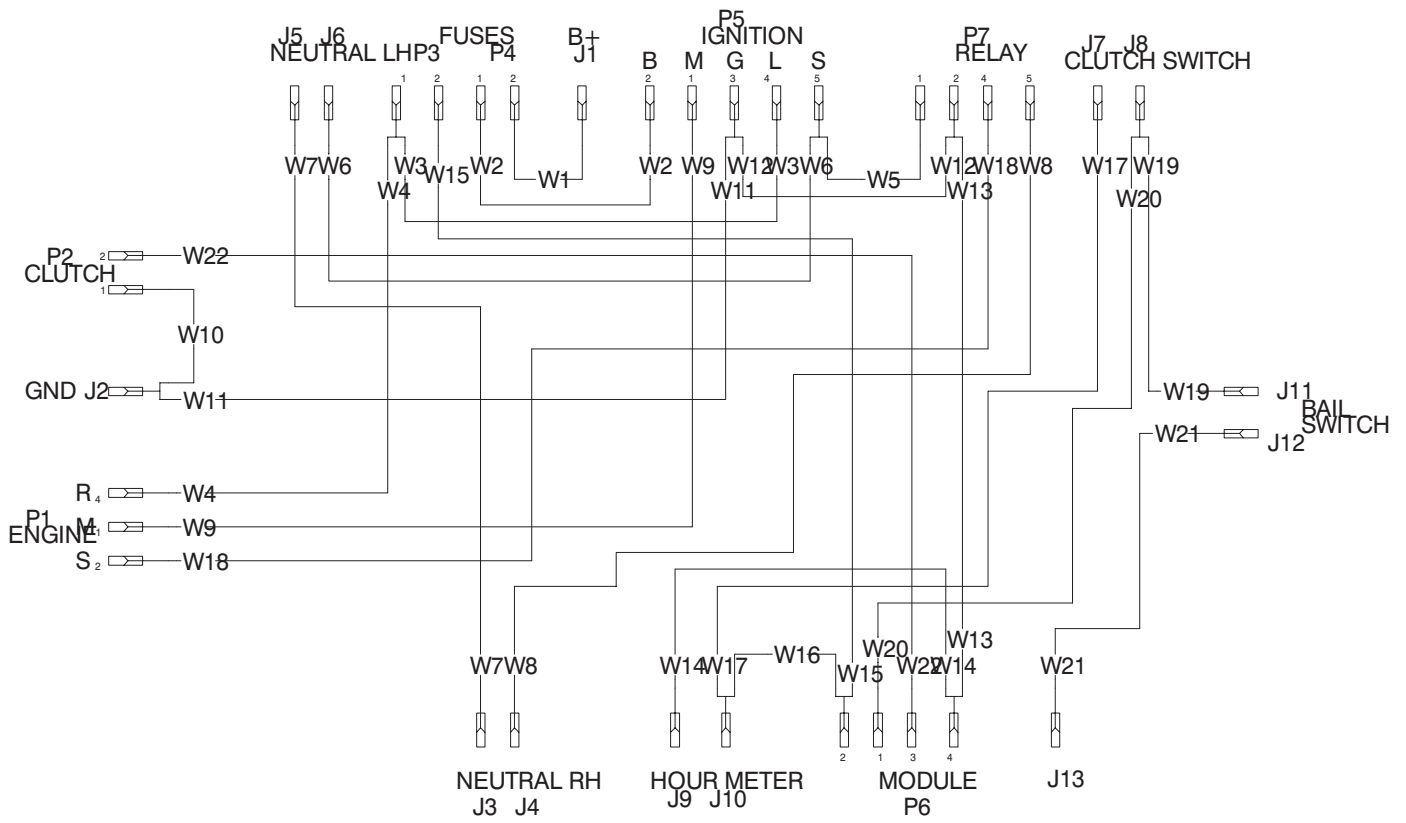
Exhaust

Ref. No.	Part No.	Description	No. Used
1	24 068 08	Muffler	1
2	24 041 02	Gasket – Exhaust	2
3	SM-0645020	Screw	2
4	M-0829033	Stud	4
5	M-0841080	Nut	4

Ref. No.	Part No.	Description	No. Used
6	24 281 07	Duct – Heat Shield	1
7	25 086 40	Screw	4
*	24 782 05	Miniblock	1
*	24 755 03	Gasket Set	1

*Not Illustrated

20HP KOHLER

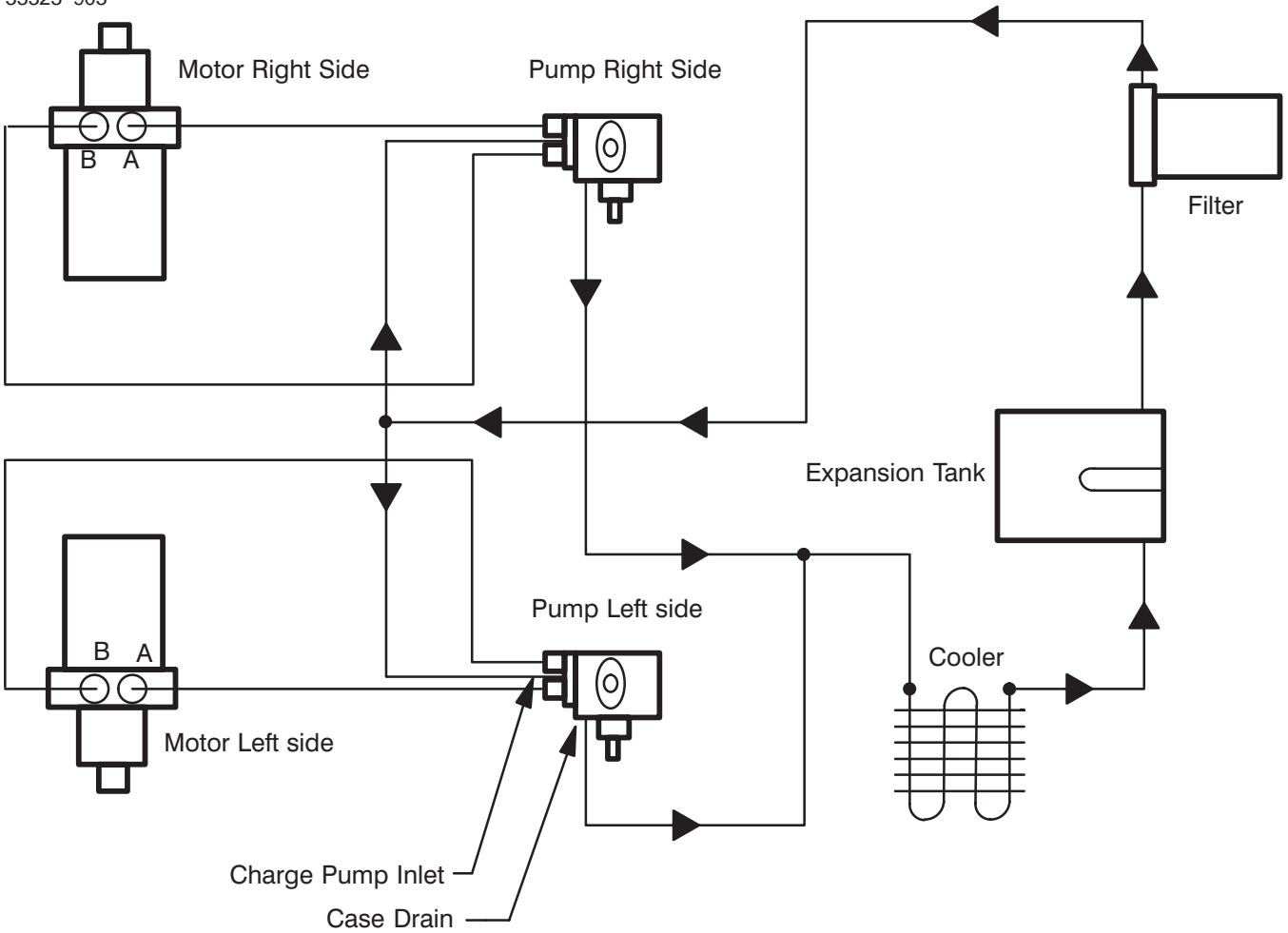


Sheet No.:

Schematic

Ref. No.	Part No.	Qty.	Description

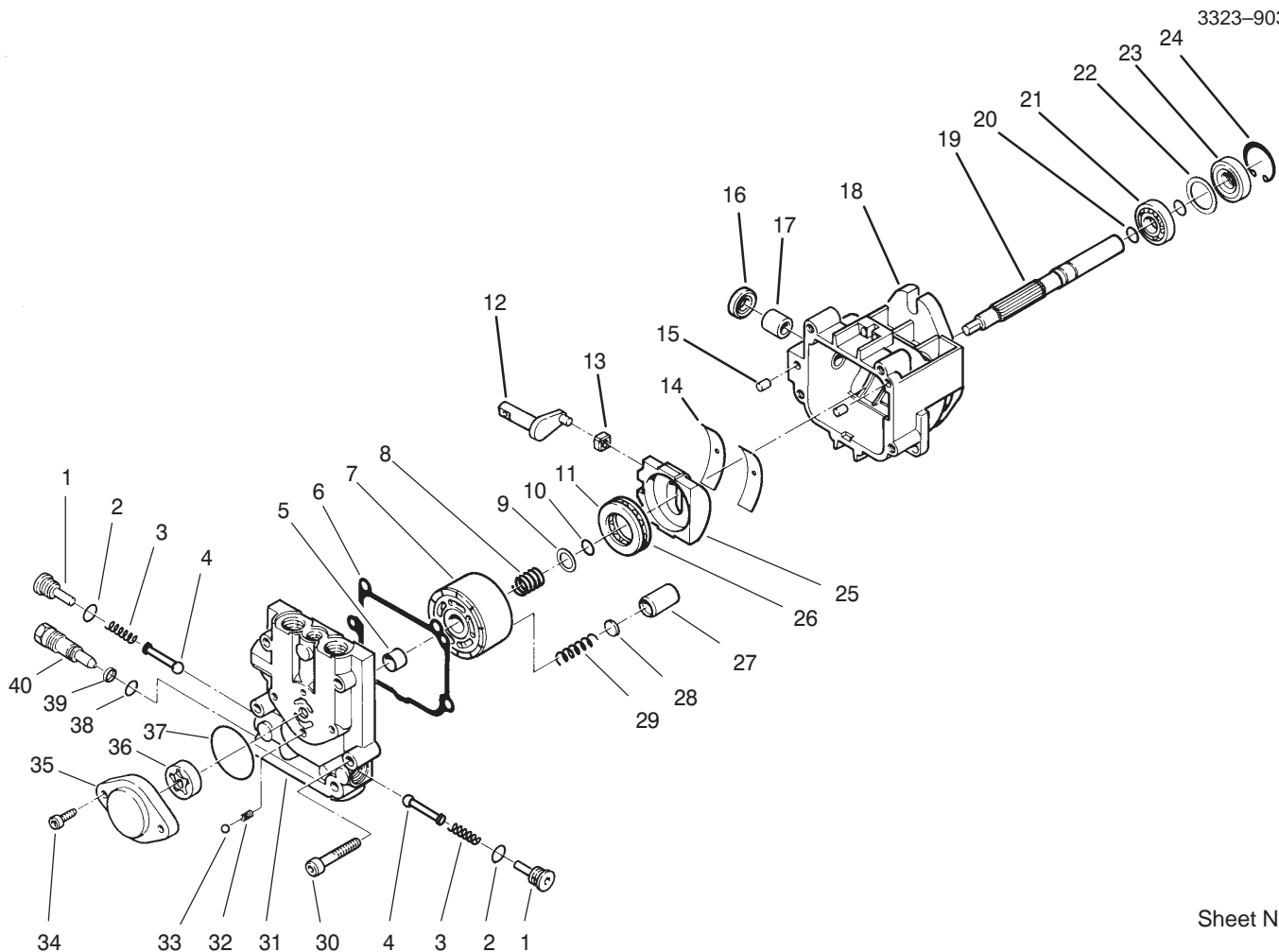
Ref. No.	Part No.	Qty.	Description



Hydraulic Schematic

Ref. No.	Part No.	Qty.	Description

Ref. No.	Part No.	Qty.	Description



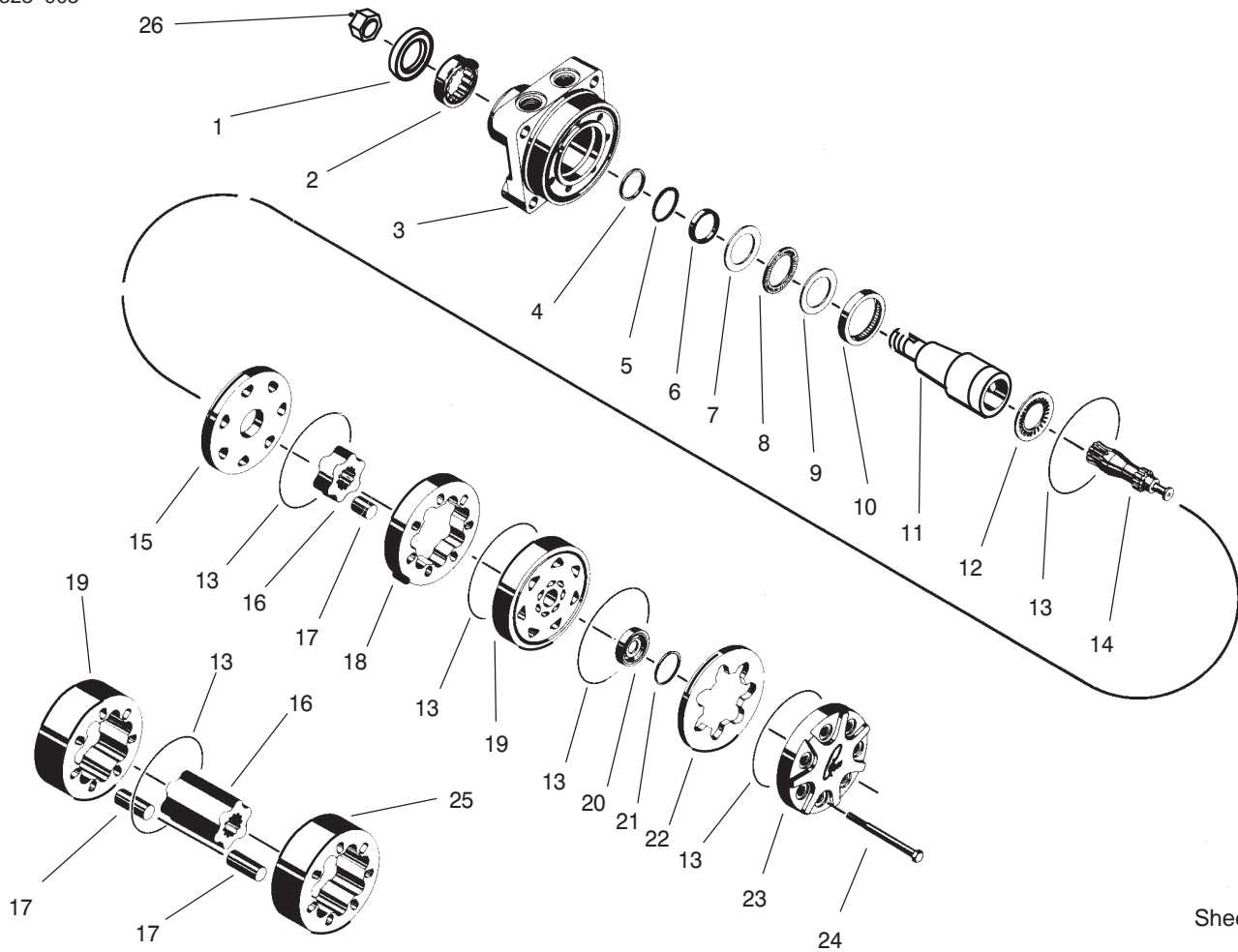
Sheet No.:

Hydraulic Pump Assembly No. 95-1538

Ref. No.	Part No.	Qty.	Description
*1	82-6120		Check Valve Kit
		2	(Incl. Ref. #2-4
2		2	Seal - O-Ring
3		2	Spring
4		4	Poppet
5		1	Journal - Bearing
6		1	Gasket - End Cap
7		1	Cylinder Block Kit (Incl. Ref. #8-10 & 27-29)
8		1	Spring
9		1	Washer
10		1	Ring - Retaining
11		1	Plate - Thrust
12		1	Arm - Trunnion
13		1	Guide - Slot
14		2	Cradle - Bearing
15		2	Pin
16		1	Seal - Lip
17		1	Journal - Bearing
18		1	Housing-Assembly (Incl. Ref. #16 & 17)
19		1	Shaft
20		2	Ring - Retaining
21		1	Bearing - Ball
22		1	Spacer

Ref. No.	Part No.	Qty.	Description
23		1	Seal - Lip
24		1	Ring - Retaining
25		1	Swashplate Assembly
26		1	Roller - Thrust
27		5	Piston
28		5	Washer - Thrust
29		5	Spring - Piston
30		4	Screw
31		1	End Cap Assembly (Incl. Ref. #5)
32		1	Ball
33		1	Spring
34		2	Screw
35		1	Housing - Charge Pump
36		1	Gerotor Assembly
37		1	Seal - O-Ring
38		1	Seal - O-Ring
39		1	Ring - Back-Up
40		1	Valve - Bypass
*	80-6110	1	Charge Relief Valve Kit (Incl. Ref. #32-33)
*	80-6130	1	Overhaul Seal Kit (Incl. Ref. #6, 10, 16, 20, 23 & 37-39)

* Not illustrated



Sheet No.:

Traction Drive Motor

Ref. No.	Part No.	Qty.	Description
1		1	Seal
2		1	Bearing
3		1	Housing
4		1	Washer - Back Up
5		1	Washer - Back Up
6		1	Seal
7		1	Washer - Thrust
8		1	Bearing - Thrust
9		1	Washer - Thrust
10		1	Bearing - Inner
11		1	Coupling - Shaft
12		1	Bearing - Thrust
13		5	"O"Ring
14		1	Link - Drive
15		1	Plate Wear
16		1	Rotor
17		7	Vane
18		1	Stator
19		1	Manifold
20		1	Commutator
21		1	Seal - Commutator
22		1	Commutator - Ring
23		1	Cover - End
24		A/R	Bolt - Special
25		1	Stator Half
26	85-7310	1	Nut

Ref. No.	Part No.	Qty.	Description
*	85-7320	1	Kit - Seal (Incl. Ref. #1,4,6,13 & 20)

* Not illustrated

