



Rubber Over-the-Tire Tracks for 4 Paw™ Dingo® Traction Units

Model 22662

Installation Instructions

IMPORTANT: Before using this product, read the safety section in your traction unit operator's manual, and follow all precautions listed there.

Loose Parts

DESCRIPTION	QTY.	USE
Pivot pin	2	Install on loader arm hydraulic cylinders
Hex set-screw	2	
Grease fitting	2	
Screw	2	
Spacer	2	
Wheel spacers	4	Install on traction unit
Lug nuts (20 provided with the wheel spacers and 20 on the traction unit)	40	
Tires	4	
Rubber tracks	2	Install on traction unit

Installation

IMPORTANT: The tracks must only be installed over the supplied tires. Installation over any other type of tire may result in damage to the machine.

IMPORTANT: Do not install the tracks on chain drive traction units. The tracks may damage a chain drive traction unit.

Installing Pivot Pins

1. Lower the loader arms as low as possible.
2. Turn the traction unit off and remove the key.
3. Remove the existing pivot pin from the bottom of a loader arm hydraulic cylinder (Fig. 1). Retain the pin for use when removing the tracks.

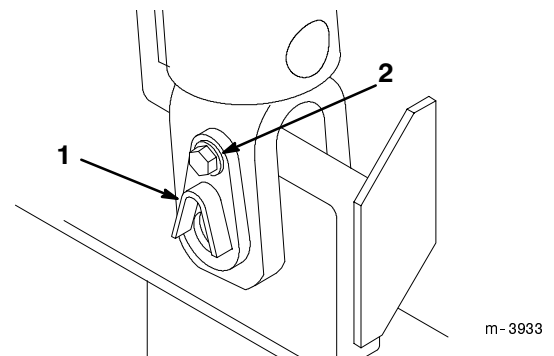


Figure 1

1. Pivot pin

2. Bolt

4. Install the new pivot pin using the screw and spacer (Fig. 2).

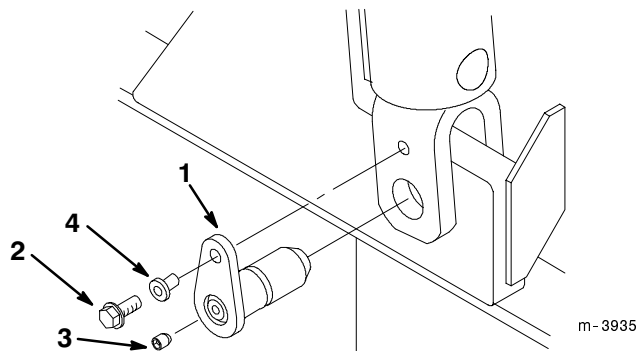


Figure 2

- | | |
|---------------|------------------|
| 1. Pivot pin | 3. Hex set-screw |
| 2. Torx screw | 4. Spacer |

5. Thread a grease fitting into the opening in the face of the new pivot pin.
6. Connect a grease gun to the fitting. Pump grease into the fitting until grease begins to ooze out of the bearing.
7. Wipe up any excess grease.
8. Remove the grease fitting and replace it with the hex set-screw (Fig. 2).
9. Repeat steps 3 through 8 for the other loader arm hydraulic cylinder.
10. Store the grease fittings for future use.

Installing the Tracks

1. Lift/support the traction unit so that the wheels are off of the ground. Refer to your traction unit operator's manual for information on lifting the traction unit.
2. Remove the wheels.
3. Slide the wheel spacers onto the studs on the wheel hub and secure them with lug nuts (Fig. 3). Torque the lug nuts to 55 ft-lbs (75 N·m).
4. Install two new wheels on the studs on the rear wheel spacers and secure them with lug nuts (Fig. 3). Torque the lug nuts to 55 ft-lbs (75 N·m).

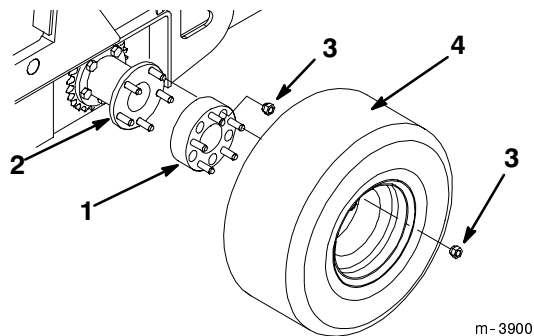


Figure 3

- | | |
|-----------------|------------|
| 1. Wheel spacer | 3. Lug nut |
| 2. Wheel hub | 4. Wheel |

5. Deflate all four of the new tires.
6. Place the tracks over the rear wheels.
7. Place the front wheels inside the tracks.
8. Install two new front wheels on the studs on the front wheel spacers and secure them with lug nuts (Fig. 3). Torque the lug nuts to 55 ft-lbs (75 N·m).
9. Inflate all tires to 30 psi.
10. After the first 8 hours of use, tighten the lug nuts again to 55 ft-lbs (75 N·m).

Removing the Tracks

1. Lift/support the traction unit so that the wheels are off of the ground. Refer to your traction unit operator's manual for information on lifting the traction unit.
2. Deflate all four tires.
3. Remove the wheels, tracks, and wheel spacers.
4. Install the four tires you removed previously. Torque the lug nuts to 55 ft-lbs (75 N·m).



WARNING



POTENTIAL HAZARD

- The moving tracks can pinch hands or feet.

WHAT CAN HAPPEN

- Injury or amputation could result.

HOW TO AVOID THE HAZARD

- Keep yourself and bystanders clear of the tracks during operation.

Maintenance

Greasing Pivot Pins

Grease the new pivot pins on the hydraulic cylinders yearly. To grease the pivot pins installed with the tracks, complete the following procedure:

1. Lower the loader arms as far as possible.
2. Turn the traction unit off and remove the key.
3. Clean the face of each pivot pin with a rag.
4. Remove the hex set-screws from the center of the pivot pins.
5. Thread the grease fittings into the openings vacated by the set-screws.
6. Connect a grease gun to each fitting. Pump grease into the fittings until it begins to ooze out of the bearings.
7. Wipe up any excess grease.
8. Remove the grease fittings and replace them with the hex set-screws.

Storage

Before storing the tracks for more than 30 days, complete the following procedure:

1. Wash the tracks with a mild detergent and water.
2. Check the condition of the track and tires. Replace any part that is damaged or worn.
3. Store the tracks in a clean, dry area. Cover them to protect them and keep them clean.

