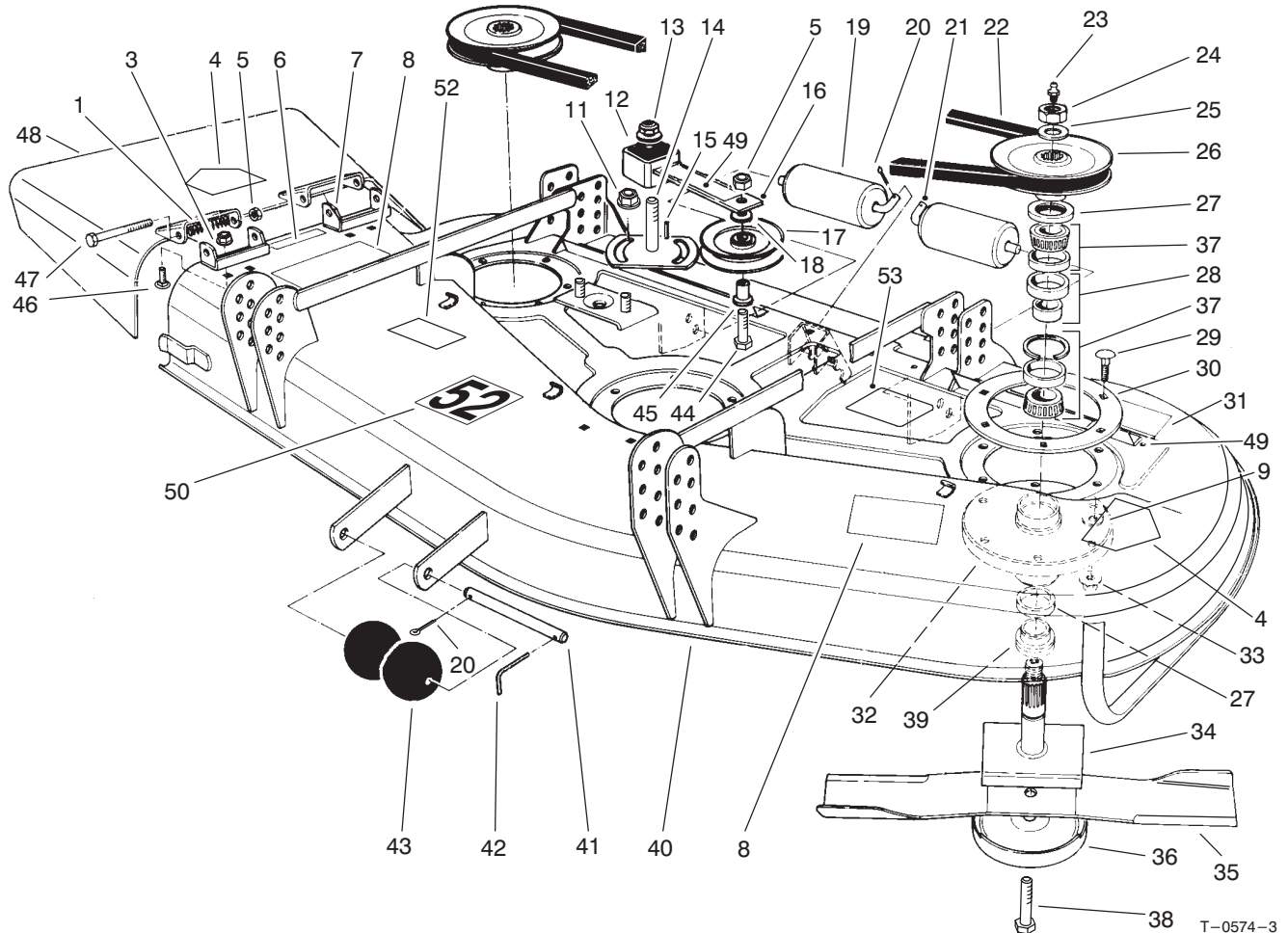
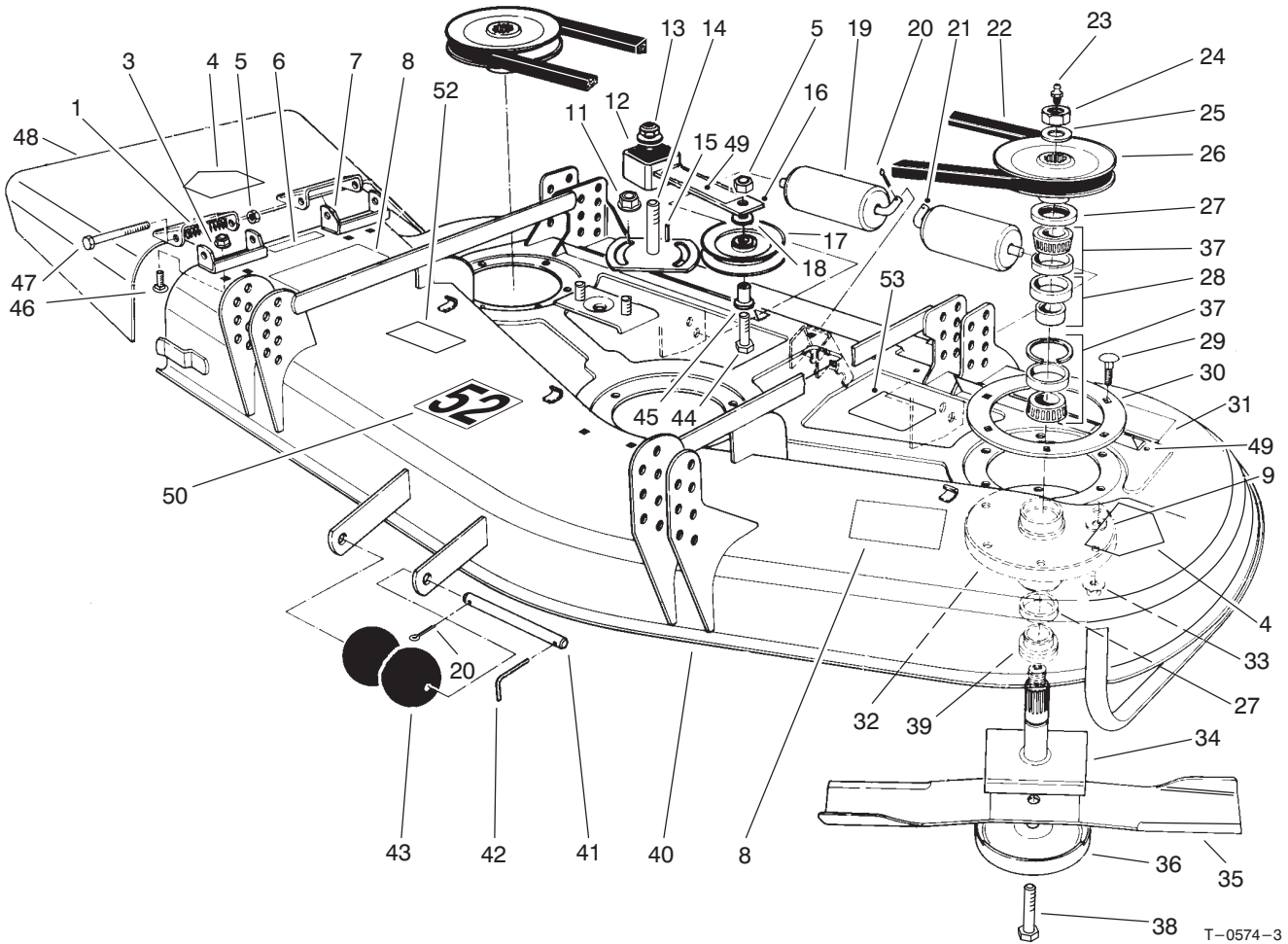




Model No. 30555-20000001 and Up

**PARTS
CATALOG**
**52" SIDE-DISCHARGE CUTTING UNIT
FOR GROUNDSMASTER® 200 SERIES**

Deck And Spindle Assembly

Ref. No.	Part No.	Description	No. Used	Ref. No.	Part No.	Description	No. Used
1	40-6230	Spring-Torsion	2	18	7-0081	Washer-Special	1
3	32128-20	Nut-HFH	4	19	36-1740	Roller-Deck	2
4	100-6582	Decal-Danger	2	20	3272-11	Pin-Cotter	3
5	3296-5	Nut-Lock	3	21	40-0340	Shaft-Rear Roller	2
6	100-6553	Decal-Danger	1	22	27-1160	V-Belt	1
7	29-5590	Pivot Bracket-Deflector	2	23	302-2	Fitting-Grease	3
8	93-7824	Decal-Danger	2	24	32146-20	Nut-Lock	3
9	3256-24	Washer-Flat	18	25	92-5836	Washer	3
11	3290-357	Nut-HFH	2	26	27-0970	Pulley	3
12	3256-27	Washer-Flat	1	27	253-139	Seal-Wave	6
13	3296-33	Nut-Lock	1	28	27-5970	Spacer-Matched Set	1
14	28-9060	Plate-Idler	1	29	3231-22	Bolt-Carriage	18
15	5-1077	Key-Square	1	30	27-7680	Ring-Deck Support	3
16	100-6178	Idler Arm ASM (Incl. Ref. #49)	1	31	93-7818	Decal-Torque	1
17	65-5940	Pulley-Idler	1	32	61-4160	Housing-Spindle	3
				33	32128-21	Nut-HFH	18



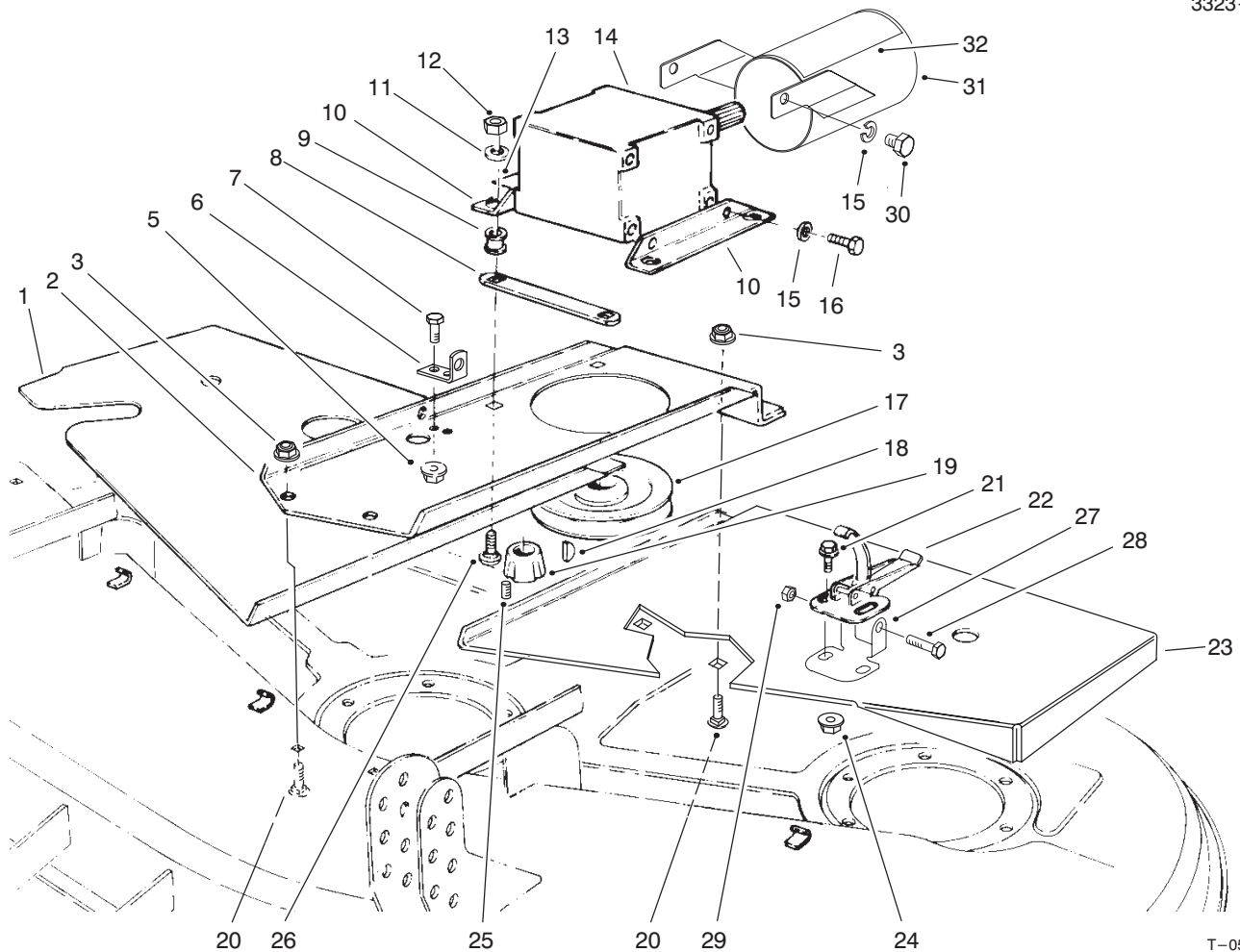
T-0574-3

Deck And Spindle Assembly (Continued)

Ref. No.	Part No.	Description	No. Used
34	27-0920	Spindle-Shaft	3
35	27-0990	Blade	3
*	44-5480	Blade-High Sail (Optional)	3
*	56-2390	Blade-Extra High Sail	3
36	72-9361	Cup-Scalp, Anti	3
37	27-0960	Bearing Set-Matched	3
38	92-5816	Screw-Blade Bolt	3
39	27-0950	Spacer-Spindle Bearing	3
40	95-6274	Asm-Deck (Incl. Ref. #4, 6, 8, 31, 49, 50, 52 & 53))	1
41	40-6400	Shaft-Roller	1
42	57-0690	Pin-Cotter	1
43	29-4820	Roller	2
44	3211-8	Screw-HH	1
45	65-5950	Bushing-Pulley	1
46	3230-23	Bolt-Carriage	4

Ref. No.	Part No.	Description	No. Used
47	3211-15	Screw-HH	2
48	93-8714	Asm-Grass Deflector (Incl. Ref. #4)	1
49	100-6578	Decal-Danger	2
50	93-7808	Decal-Warning	1
52	51-3960	Decal-52"	1
53	99-5171	Decal-Belt Routing	1
*	46-8530	Asm-Bearing (Incl. Ref. #28 & 37)	3
*	27-0870	Asm-Spindle (Incl. Ref. #23-28, 32, 34 & 39)	3
*	95-3078	Kit-Spindle (Incl. Ref. #9, 23-29, 32-34 & 36-39)	3
*	95-3070	Kit-Blade & Belt (Incl. Ref. 22 & 35)	1

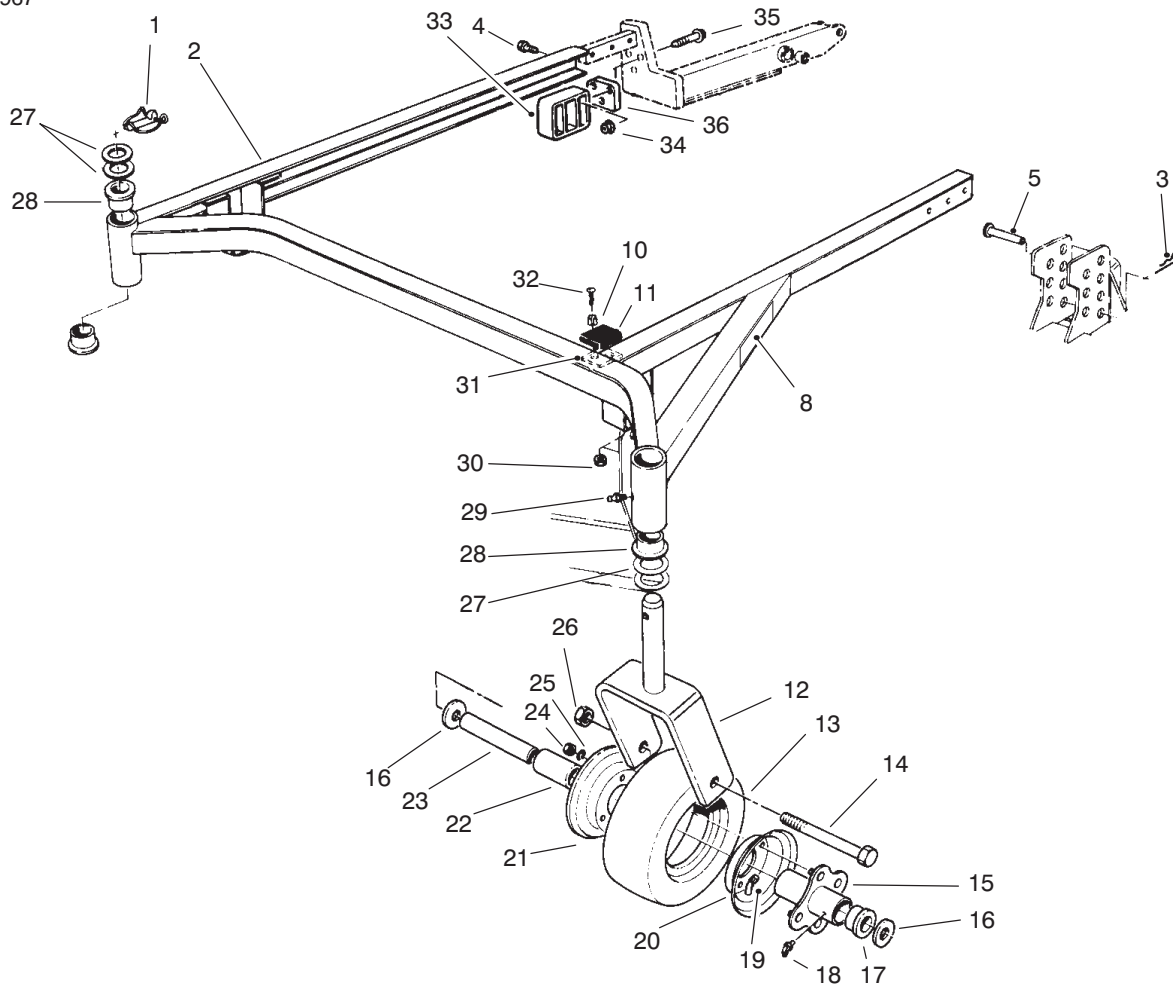
*Not Illustrated



T-0576-2

Covers And Gear Box Assembly

Ref. No.	Part No.	Description	No. Used	Ref. No.	Part No.	Description	No. Used
1	72-9330	Cover RH	1	18	3257-5	Key-Woodruff	1
2	72-9230	Base-Gear Box	1	19	27-6140	Bushing-Taper Lock (Incl. Ref. #25)	1
3	3290-357	Nut-HFH	4	20	3231-27	Bolt-Carriage	4
5	32128-20	Nut-HFH	2	21	3290-321	Screw-Machine	6
6	72-9240	Bracket-Extension	1	22	249-21	Latch-Draw	3
7	322-4	Screw-HH	2	23	72-9340	Cover LH	1
8	68-9890	Cover-Gear Box	1	24	32128-17	Nut-HFH	6
9	63-9750	ISO Mount-Gear Box	4	25	3245-9	Screw-Set	2
10	68-8560	Bracket-Gear Box	2	26	3231-26	Bolt-Carriage	4
11	63-8410	Washer	4	27	93-7043	Retainer	2
12	32153-2	Nut-Lock	4	28	321-8	Screw-HH	2
13	93-6697	Decal-Lube	1	29	3296-56	Nut-Lock Lock	2
14	68-6810	Asm-Gear Box	1	30	323-2	Screw-HH	2
15	3253-21	Washer-Flat	4	31	99-8408	Guard-P.T.O. Shaft (Incl. Ref. #32)	1
15	3253-21	Washer-Flat (Europe)	6	32	93-7283	Decal-Danger	1
16	323-4	Screw-HH	4				
17	63-9900	Pulley-Gear Box	1				



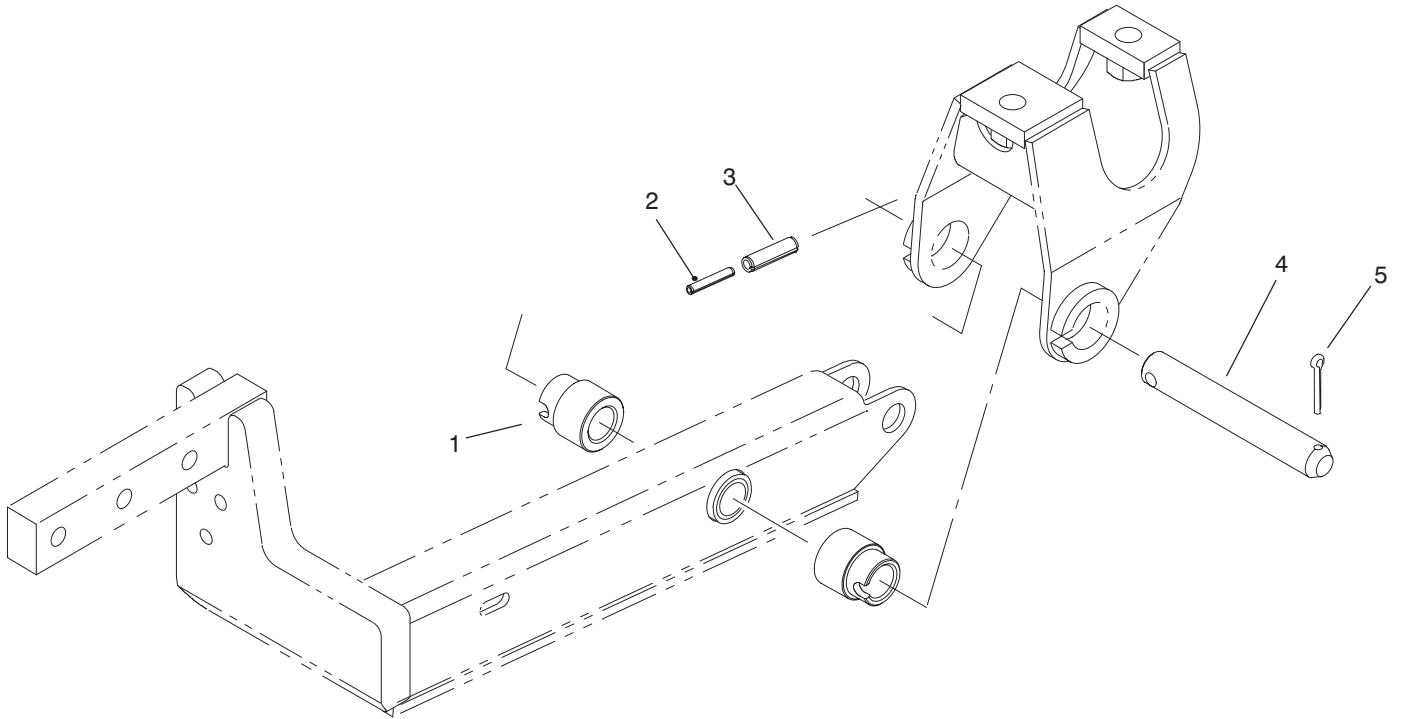
T-1249-2

Carrier Frame Assembly

Ref. No.	Part No.	Description	No. Used
1	283-71	Pin-Lynch	2
2	83-4550	Frame-Deck Suspension (Incl. Ref. #28 & 29)	1
3	3290-355	Pin-Hair	4
4	325-32	Screw-HH	6
5	283-55	Pin-Clevis	4
8	93-7819	Decal-H.O.C.	1
10	40-9520	Spacer-Split	4
11	40-0330	Cushion-Rubber	2
12	68-8900	Fork-Castor, Front	2
13	68-8960	Tire	2
14	325-19	Screw-HH	2
15	68-8940	Hub-Center (Incl. Ref. #18)	2
16	3256-6	Washer-Thrust	4
17	62-5580	Bushing	4
18	302-61	Fitting-Grease	2
19	68-8950	Tube w/Valve	2
20	68-8920	Wheel Half-Female	2
21	68-8930	Wheel Half-Male	2
22	62-5570	Bearing-Roller	2
23	68-8980	Bushing-Spanner	2
24	3219-2	Nut-Hex.	8

Ref. No.	Part No.	Description	No. Used
25	3253-4	Washer-Lock	8
26	32153-5	Nut-Lock	2
27	3-6781	Washer-Thrust	8
28	94-1291	Bushing-Special	4
29	302-5	Fitting-Grease	2
30	3296-2	Nut-Lock	4
31	42-6200	Cushion-Shim	A/R
32	32122-28	Screw-Mach. Truss Hd.	4
33	83-4520	Cradle-Rear	2
34	32128-40	Nut-HFH	6
35	66-9302	Screw-HFH	6
36	83-4580	Spacer	2
37	76-3080	Lift Arm RH (Incl. Ref. #38 & 39)	1
*	76-3090	Lift Arm LH (Incl. Ref. #38 & 39)	1
38	92-5648	Bushing	4
39	302-62	Fitting-Grease	2
*	68-8970	Castor Wheel (Incl. Ref. #13, 15, 17-22 & 24-25)	2
*	95-3077	Kit-Castor Wheel (2) (Incl. Ref. #13-26)	1

*Not Illustrated

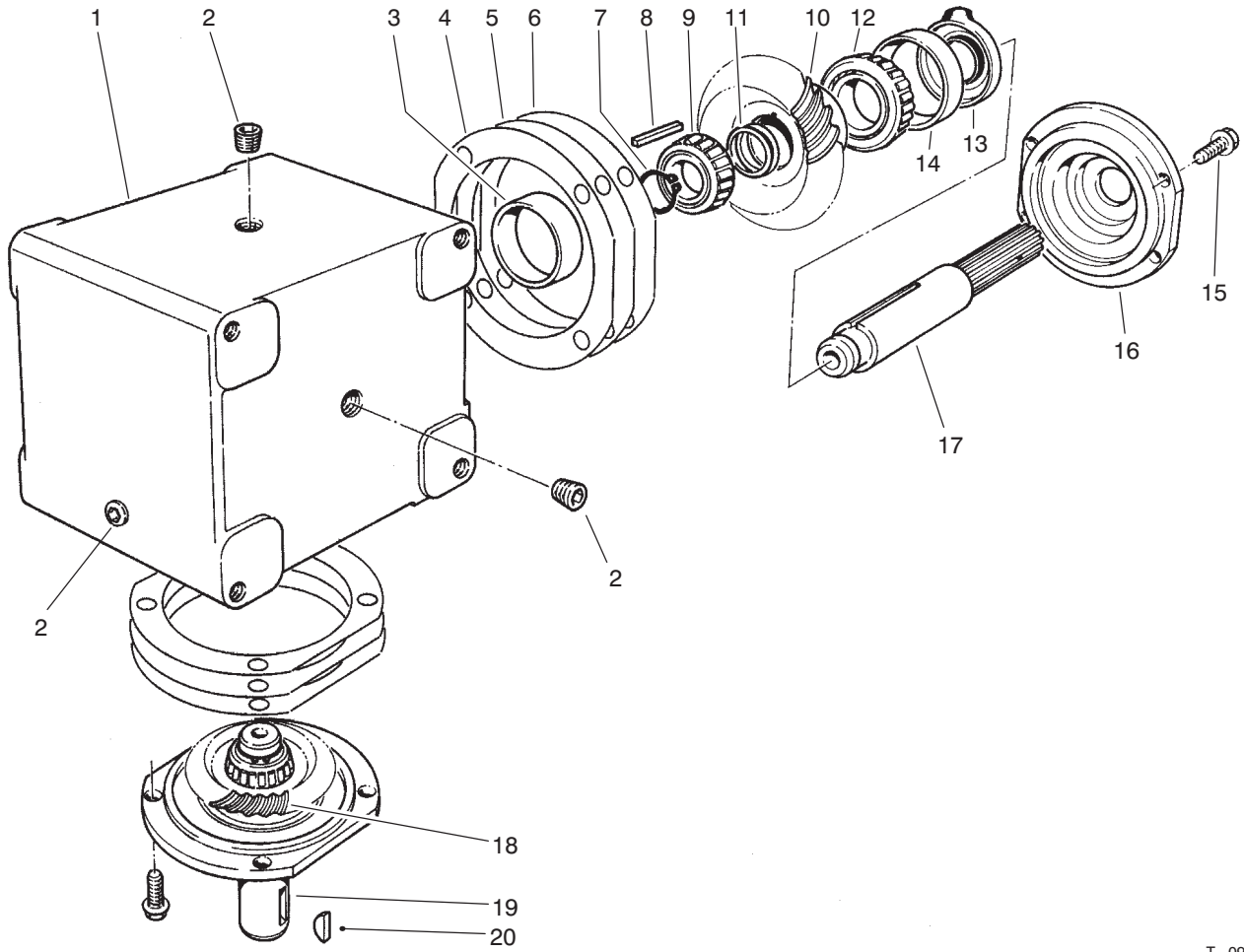


T-3199

Pivot Pin And Spacer Assembly

Ref. No.	Part No.	Description	No. Used
1	98-7926	Spacer-Lift Arm	4
2	32121-71	Pin-Spring	2
3	32121-49	Pin-Spring	2

Ref. No.	Part No.	Description	No. Used
4	98-2348	Asm-Pin, Pivot (Incl. Ref. #2 & 3)	2
5	3272-17	Pin-Cotter	2

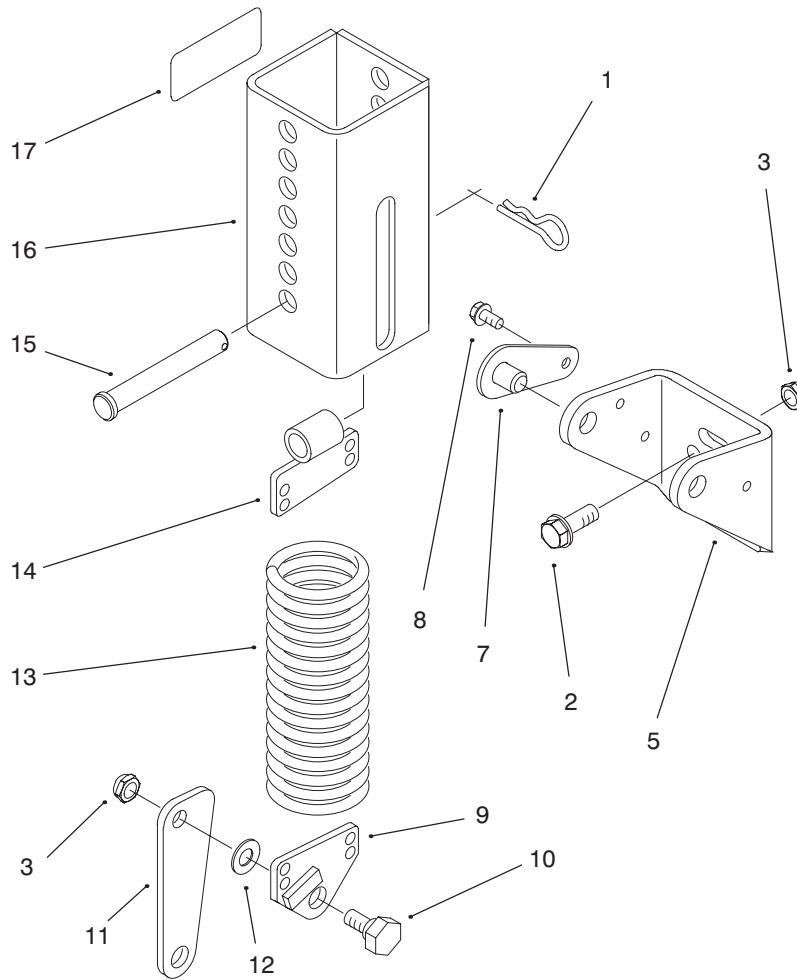


T-0977-1

Gear Box Assembly No. 68-6810

Ref. No.	Part No.	Description	No. Used
1	68-7030	Housing	1
2	62-3490	Plug-Pipe (Solid)	4
3	62-3360	Cup-Bearing	2
4	62-3420	Gasket (.015)	A/R
5	62-3430	Gasket (.005)	A/R
6	62-3440	Gasket (.003)	A/R
7	68-7070	Ring-Retaining	2
8	62-3380	Key	2
9	62-3370	Cone-Bearing	2
10	68-7080	Gear	1

Ref. No.	Part No.	Description	No. Used
11	72-9370	Shim (.020)	2
12	62-3330	Cone-Gear	1
13	62-3400	Seal	2
14	62-3340	Cup-Bearing	2
15	62-3310	Screw-Cap	8
16	62-3410	Cap	2
17	68-7040	Shaft	1
18	68-7060	Gear	1
19	68-7050	Shaft	1
*	68-6810	Asm-Gear Box	1



T-1219-1

Counter Balance Assembly

Ref. No.	Part No.	Description	No. Used	Ref. No.	Part No.	Description	No. Used
1	3290-355	Pin-Hair Cotter	1	11	66-8450	Link-Knee	1
2	3234-11	Screw-HFH	2	12	3256-24	Washer-Flat	2
3	3296-44	Nut-Lock	2	13	66-8390	Spring-Extension	1
5	66-8460	Bracket-Mounting	1	14	70-7940	End-Spring	1
7	70-7920	Asm-Pin, Lock	2	15	283-69	Pin-Clevis	1
8	12-3270	Screw-Self Tapping	2	16	100-6179	Spring Cover Asm (Incl. #17)	1
9	66-8420	End-Spring	1	17	93-6696	Decal-Caution	2
10	46-3380	Bolt-Shoulder	2				

