



## 7" Cordless Trimmer

Model No. 51556–200000001 and Up

### Parts Catalog

---

#### Ordering Replacement Parts

To order replacement parts, please supply: the part number, the quantity, and the description of each part desired.

#### Understanding Reference Numbers

Each identified part in an illustration has a reference number. The reference number for a part also appears in the parts list, along with other information about the part.

This catalog uses two special reference number formats, one to indicate parts in a service assembly and another to indicate the quantity of a given part in an illustration.

#### Service Assembly Reference Numbers

Parts in service assemblies have reference numbers in the form **a:b**. The **a** represents the reference number of the entire service assembly and the **b** represents a sequential number unique to each part within the service assembly.

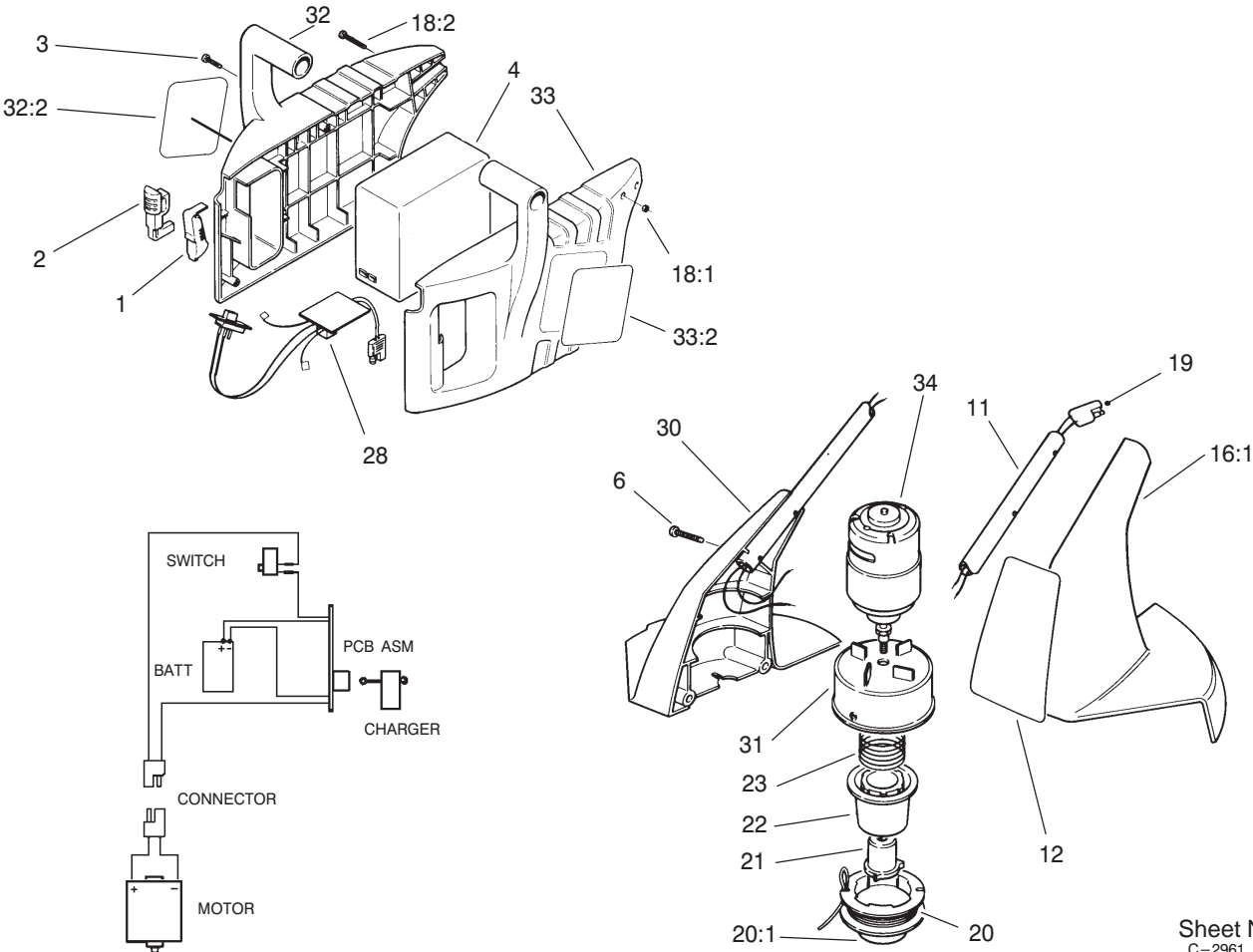
For example, a wheel assembly might be identified by reference number **6**, the tire by **6:1**, the valve by **6:2**, and the wheel by **6:3**. When you order the assembly identified by reference number **6**, you receive all parts identified by reference numbers **6:1**, **6:2**, and **6:3**. However, you may also order any part individually.

Reference numbers of this type appear in illustrations and in part lists.

#### Reference Numbers Indicating Quantity

In an illustration, if a reference number indicates more than one part, the reference number has the form **nX y**. The **n** represents the quantity of the part, the **X** is the multiplication symbol, and the **y** represents the reference number.

For example, in an illustration, the reference number **2X 37** means that two of the parts identified by reference number **37** are indicated.



Sheet No.:2  
C-2961

Trimmer Assembly

Ref. No.	Part No.	Qty.	Description
1	100-9744	1	Trigger
2	100-9745	1	Lock-Trigger
3	94-4496	6	Screw-PPH
4	33-6650	1	Battery
6	32104-123	4	Screw-Plastite
11	73-5350	1	Handle-Extension
12	100-9740	1	Decal-Housing
16:1	100-9732	1	Housing-LH
*18	100-1209	1	Loose Parts Bag
18:1	3217-44	2	Nut-Hex
18:2	3250-47	2	Screw-PPH
19	73-5540	1	Wiring Harness-Lower
20	34-9830	1	Spool-Prewound
20:1	34-9870	1	Cap-Spool
21	33-9720	1	Driver
22	29-8120	1	Core - Spool
23	29-8230	1	Spring-Compression
28	94-4358	1	Pcb ASM
*29	73-5410	1	Charger-Battery
30	100-9739	1	Housing ASM-RH
31	73-5280	1	Drum ASM-4 Blade
32	100-9741	1	Battery Case ASM-LH
32:2	100-9738	1	Decal-Warning
33	100-9742	1	Battery Case ASM-RH

Ref. No.	Part No.	Qty.	Description
33:2	100-9737	1	Decal-Battery Case
34	62-3172	1	Motor ASM

\* Not illustrated