



Groundsmaster[®] 223-D 4WD

Traction Unit

Model No. 30243-20000001 and Up

Parts Catalog

Ordering Replacement Parts

To order replacement parts, please supply: the part number, the quantity, and the description of each part desired.

Understanding Reference Numbers

Each identified part in an illustration has a reference number. The reference number for a part also appears in the parts list, along with other information about the part.

This catalog uses two special reference number formats, one to indicate parts in a service assembly and another to indicate the quantity of a given part in an illustration.

Service Assembly Reference Numbers

Parts in service assemblies have reference numbers in the form **a:b**. The **a** represents the reference number of the entire service assembly and the **b** represents a sequential number unique to each part within the service assembly.

For example, a wheel assembly might be identified by reference number **6**, the tire by **6:1**, the valve by **6:2**, and the wheel by **6:3**. When you order the assembly identified by reference number **6**, you receive all parts identified by reference numbers **6:1**, **6:2**, and **6:3**. However, you may also order any part individually.

Reference numbers of this type appear in illustrations and in part lists.

Reference Numbers Indicating Quantity

In an illustration, if a reference number indicates more than one part, the reference number has the form **nX y**. The **n** represents the quantity of the part, the **X** is the multiplication symbol, and the **y** represents the reference number.

For example, in an illustration, the reference number **2X 37** means that two of the parts identified by reference number **37** are indicated.

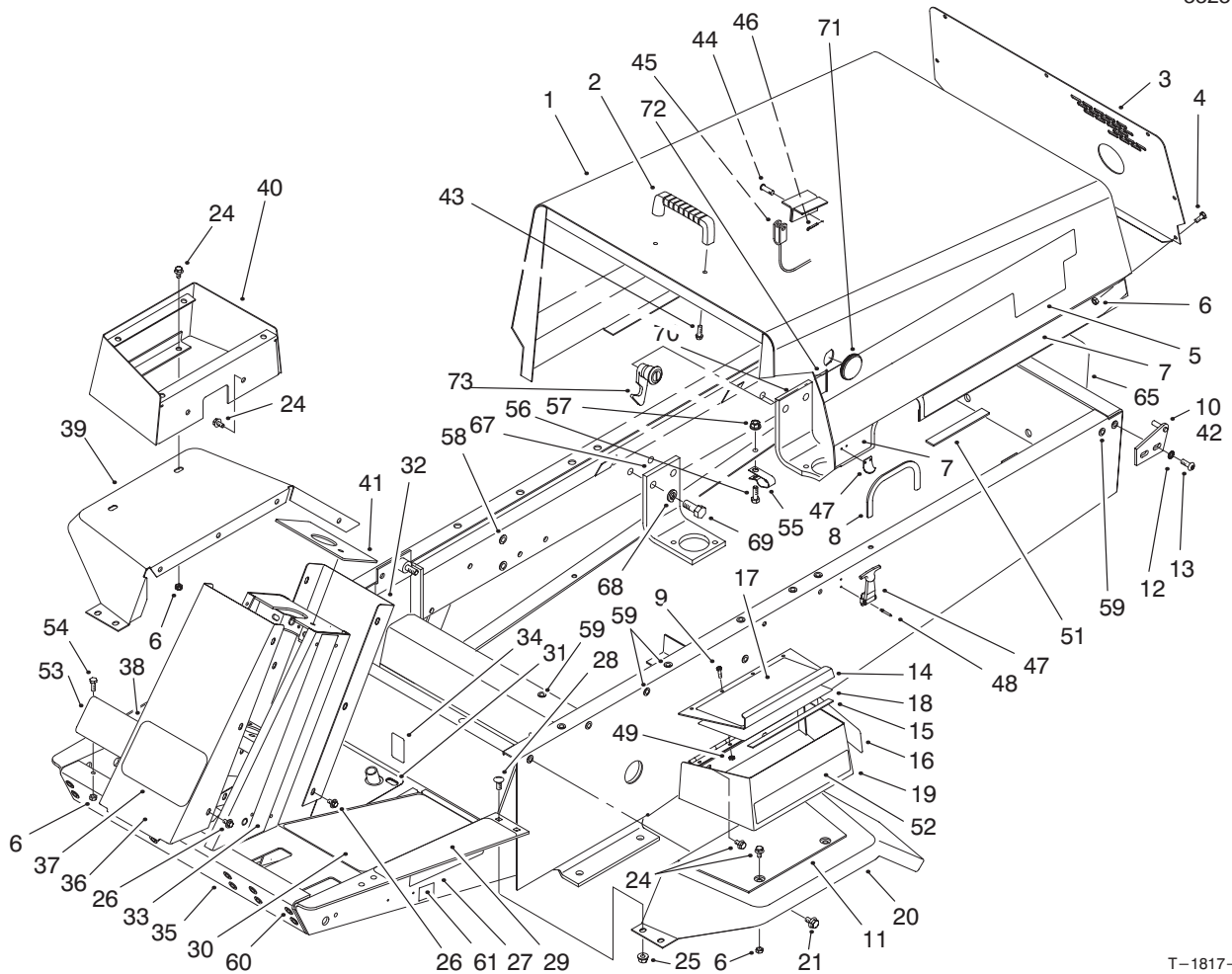
Contents

Description	Page	Description	Page
Body Assembly	3-4	Rear Axle Assembly No. 95-7501	
Control Panel Assembly	5	Bevel Pinion Shaft Assembly	38
Electrical Schematic	6	Rear Axle Assembly No. 95-7501 (Continued)	
Power Steering & Brake Pedal Assembly	7-8	Differential Assembly	39
Steering Valve Assembly No. 92-7308	9	Rear Axle Assembly No. 95-7501 (Continued)	
Traction Pedal Assembly	10	Axle Support Assembly	40
Battery & Engine Mount Assembly	11-12	Rear Axle Assembly No. 95-7501 (Continued)	
Power Take Off Assembly	13	Bevel Gear Case Assembly	41-42
Hydraulic Lift System Assembly	14-15	Rear Axle Assembly No. 95-7501 (Continued)	
Lift Valve Assembly No. 63-7960	16	Axle Case Assembly	43
Radiator Assembly	17	Rear Axle Assembly No. 95-7501 (Continued)	
Fuel Tank & Axle Assembly	18-19	Axle Assembly	44
Front Axle Assembly No. 92-2377	20-21	Steering Cylinder No. 99-2415	45
Brake Assembly	22	Engine Assembly	46
Transmission & Drive Coupling Assembly	23-24	Power Take Off Assembly	47-48
Transmission Assembly No. 92-5513	25-26	CE Engine Component Assembly (Europe)	49
Hydraulic Schematic	27	Clutch Assembly No. 63-6050	50
Transmission Interlock Assembly	28	Valves & Crankshaft Assembly	51-52
Drive Shaft Assembly No. 98-5009	29	Crankcase Assembly	53
Full Time 4WD Drive Shaft Assembly No. 92-9075		Camshaft Assembly	54
(Optional)	30	Cylinder Head Assembly	55
Seat Frame & Air Cleaner Assembly	31-33	Water Pump Assembly	56
Roll Over Protection System (R.O.P.S.)		Fuel Supply & Engine Block assembly	57-58
Assembly	34	Fuel Injection Pump Assembly	59-60
Manual Storage Assembly	35	Governor Assembly	61
Rear Axle Assembly	36-37	Starter Assembly	62
		Alternator Assembly	63

Part Description Abbreviations

Part descriptions in this catalog may include the following abbreviations.

Abbreviation	Meaning	Abbreviation	Meaning
AR	as required	INC	incorporated
ASM	assembly	LH	left hand
CARR	carriage	NI	nylon insert
DEG	degrees	PPH	Phillips pan head
FH	flat head	PTH	Phillips truss head
GA	gauge	PTO	power take off
HF	hex flange	RH	right hand
HH	hex head	SFH	slotted fillister head
HHF	hex head flange	SHH	slotted hex head
HLH	hex lag head	SQH	square head
HJ	hex jam	SHWH	slotted hex washer head
HOC	height-of-cut	SPH	slotted pan head
HS	hex socket	SRH	slotted round head
HSBH	hex socket button head	STD	standard
HSFH	hex socket flat head	TAP	self tapping
HSH	hex socket head	TTH	Torx truss head
HWH	hex washer head	WH	wing head
HWHTF	hex washer head thread forming		

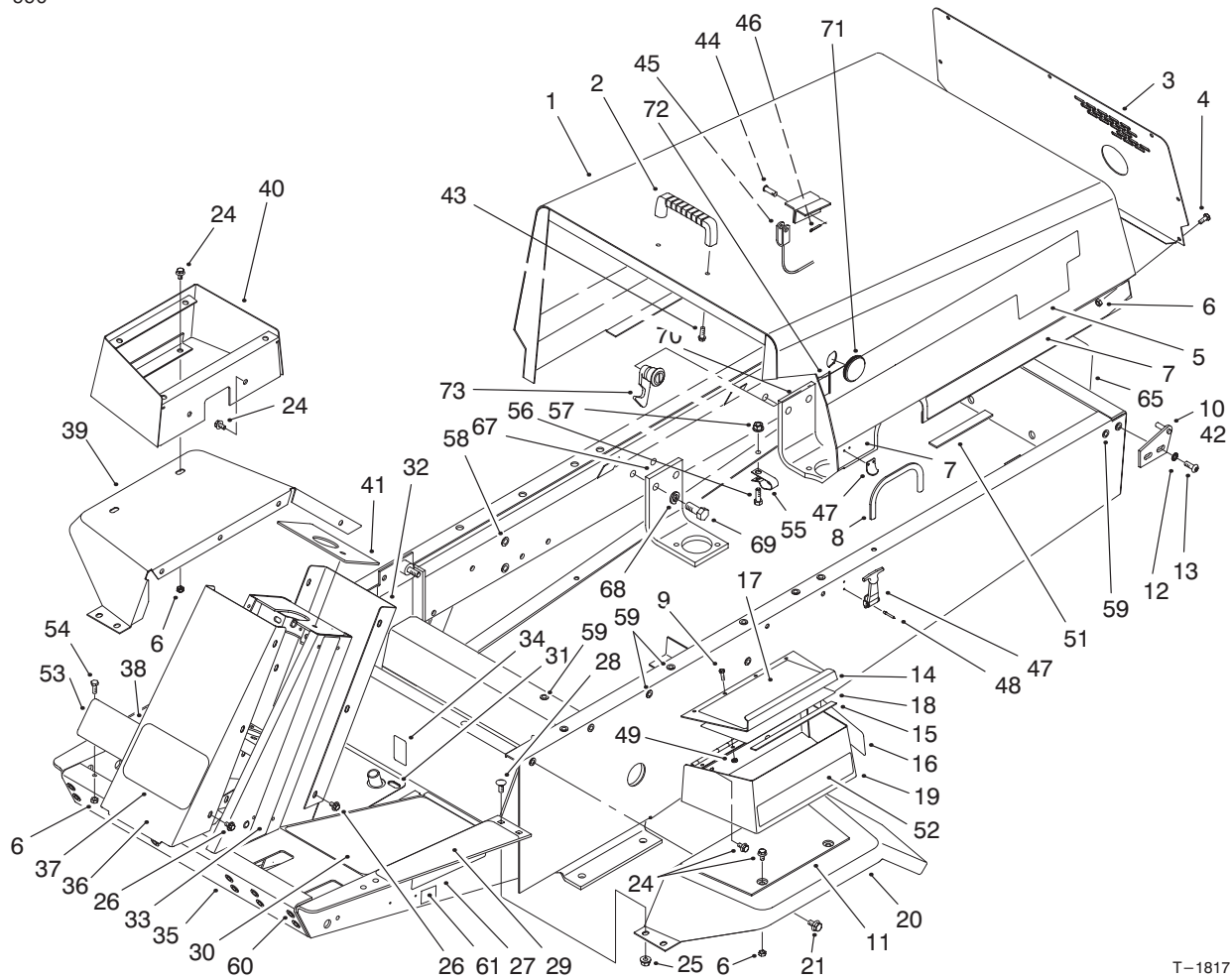


T-1817-7

Body Assembly

Ref. No.	Part No.	Qty.	Description	Ref. No.	Part No.	Qty.	Description
1	100-6571	1	Asm-Hood (Incl. Ref. #71-72)	20	63-7310	1	Fender LH (Incl. Ref. #16)
2	65-5100	1	Handle-Hood	21	3234-14	8	Screw-HFH
3	63-7030	1	Screen-Hood	24	3234-13	8	Screw-HFH
4	321-3	7	Screw-HH	25	32128-20	4	Nut-Flange
5	93-3186	2	Decal-GM 223-D	26	46-6810	13	Screw-HH
6	32128-33	13	Nut-Flange	27	93-7830	2	Decal-Torque
7	93-3193	1	Decal-Hood LH	28	3230-23	4	Bolt-CARR
*	93-3192	1	Decal-Hood RH	29	66-3200	1	Tread-Foot Rest LH
8	66-8110	1	Trim-Hood	30	66-3210	1	Tread-Foot LH
9	3290-359	4	Screw-Machine				
10	63-6900	1	Plate Hinge LH				
11	76-4790	1	Pad-Rubber				
12	3255-8	4	Washer-Lock, Ext. Tooth				
13	3274-32	4	Screw-HSH				
14	92-6502	1	Asm-Tool Box Cover (Incl. Ref. #17 & 18)				
15	66-3050	1	Strip-Magnetic Fill)				
16	93-7822	1	Decal-Refueling				
17	92-5774	1	Decal-Danger				
17	93-7804	1	Decal-Danger (Europe)				
18	84-1960	1	Decal-Service				
19	92-6501	1	Asm-Tool Box				

*Not Illustrated



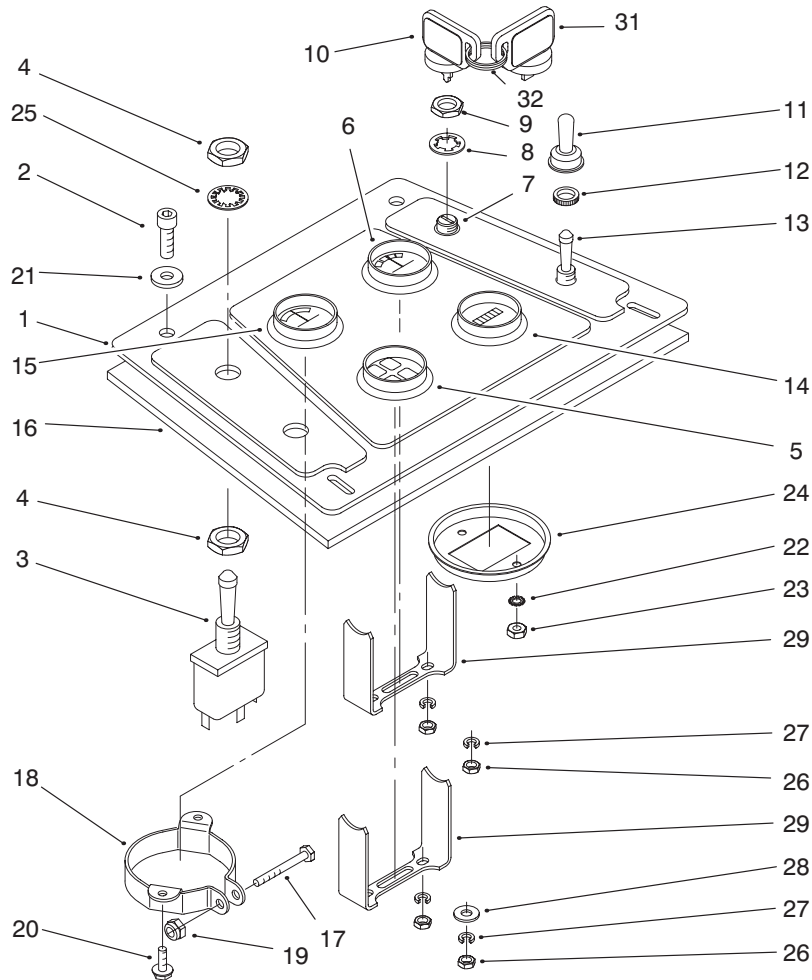
T-1817-7

Body Assembly (Continued)

Ref. No.	Part No.	Qty.	Description
31	92-5540	1	Tread-Foot RH
32	63-7320	1	Cover-Tower Rear
33	66-8760	1	Decal-Tower LH
*	66-8770	1	Decal-Tower RH
34	100-6552	1	Decal-Oil
35	95-6280	1	Asm-Frame (Incl. Ref. #27, 29-31, 34, 38, 58-60 & 65 & 80 on pages 11 & 12)
36	92-5545	1	Cover-Tower Front
37	62-5550	1	Decal-TORO
38	93-7834	1	Decal Traction Pedal
39	63-7300	1	Fender-RH
40	63-8050	1	Box-Control
41	100-6581	1	Plate-Tower
*42	63-6890	1	Plate-Hinge RH
43	46-8091	2	Screw-HH
44	283-58	1	Pin-Clevis
45	66-2870	1	Cable-Hood Stop
46	3272-10	1	Pin-Cotter
47	59-9740	1	Asm-Latch
48	3290-271	4	Rivet
49	3296-12	4	Nut-Lock
51	82-8950	2	Foam
52	72-3560	2	Decal-4wd
53	92-5548	1	Shield-Pedal Stop

Ref. No.	Part No.	Qty.	Description
54	321-4	2	Screw-HH
55	92-5753	3	Clamp-Hose
56	322-5	3	Screw-HH
57	32128-44	3	Nut-Flange Lock
58	32148-9	3	Nut-Clinch
59	32148-7	22	Nut-Clinch
60	32148-10	10	Nut-Clinch
61	93-7252	1	Decal-CE
65	62-7400	1	Decal-Toro
67	95-6270	3	Bracket-Engine Mount
68	3253-7	8	Washer-Lock
69	3213-2	8	Screw-HH
70	95-6271	1	Bracket-Engine Mount
71	98-9341	1	Grommet
72	100-6574	1	Decal-Warning
73	98-5398	1	Latch

*Not Illustrated

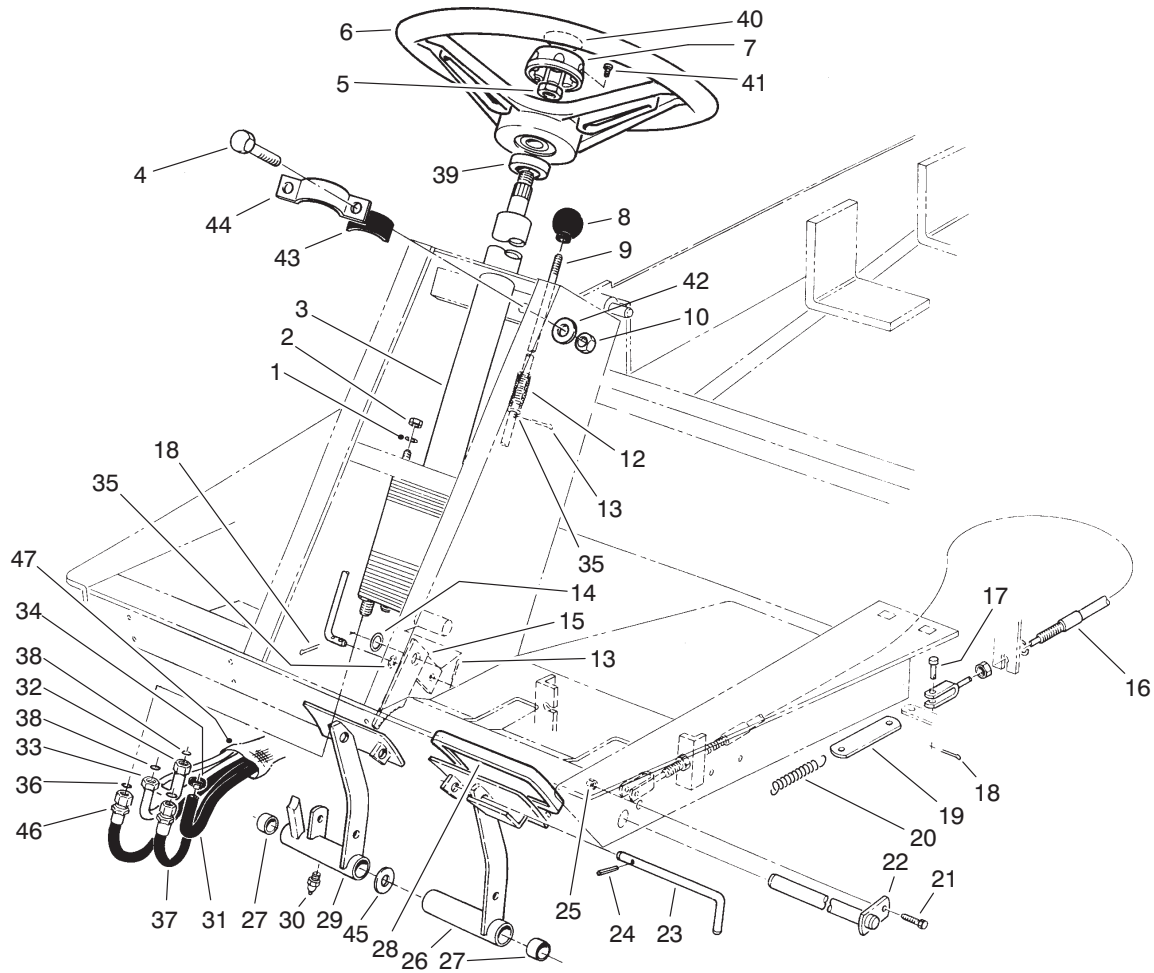


T-3450

Control Panel Assembly

Ref. No.	Part No.	Qty.	Description
1	93-7835	1	Panel-Control (Europe)
2	3274-65	4	Screw-Socket Button Hd.
3	85-4980	1	Asm-PTO Switch (Incl. Ref. #4 & 25)
4	3218-19	2	Nut-Hex.
5	66-2960	1	Cluster-Warning Light Gage-Fuel
6	66-2940	1	(Incl. Ref. #26-29)
7	27-2360	1	Asm-Ignition Switch (Incl. Ref. #8-10)
8	218-447	1	Washer-Lock
9	218-446	1	Nut-Hex.
10	63-8360	1	Key-Ignition
11	218-473	1	Boot-Switch
12	218-497	1	Nut-Face
13	6-1659	1	Asm-Glow Plug Switch (Incl. Ref. #11 & 12)
14	66-2950	1	Meter-Hour (Incl. Ref. #22-24)
15	63-7430	1	Gage-Temperature (Incl. Ref. #26-28 & 30)
16	85-7560	1	Plate-Control Panel

Ref. No.	Part No.	Qty.	Description
17	32105-1	1	Screw
18	69-4780	1	Clamp-Gauge
19	3296-12	1	Nut-Lock
20	32144-1	2	Screw-HH
21	3256-1	4	Washer-Flat
22	3254-1	4	Washer
23	3217-27	4	Nut-Hex.
24		1	Clamp
25	3254-20	1	Washer-Lock, Int. Tooth
26	3217-16	6	Nut-Hex.
27	3255-24	6	Washer-Lock
29	100-6147	2	Clamp
31	99-8970	1	Key Latch
32	98-9321	1	Key Ring

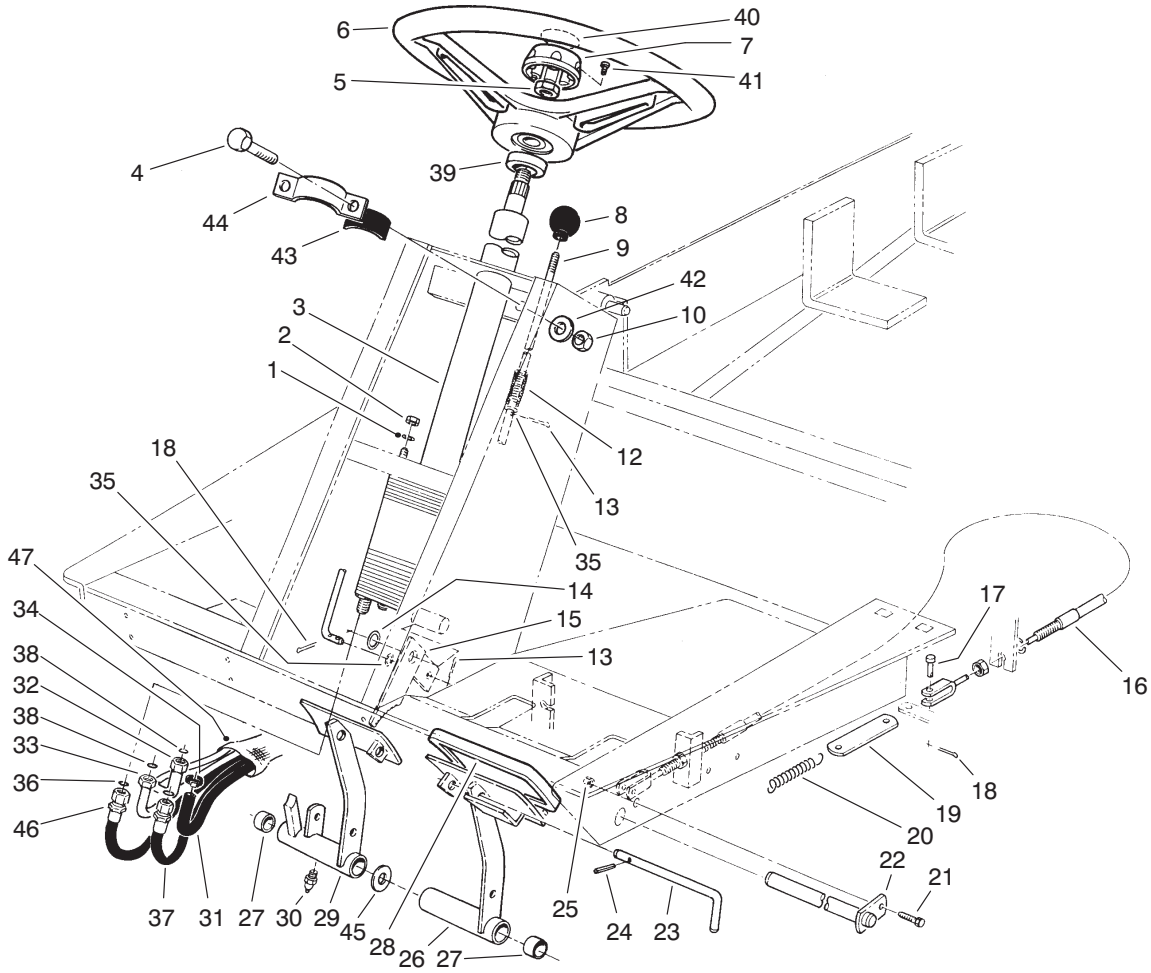


T-2354

Power Steering & Brake Pedal Assembly

Ref. No.	Part No.	Qty.	Description	Ref. No.	Part No.	Qty.	Description
1	3256-23	4	Washer-Flat	24	32121-50	1	Pin-Roll
2	3296-20	4	Nut-Lock	25	3296-42	1	Nut-Lock
3	92-7308	1	Asm-Power Steering Valve (Incl. Ref. #7)	26	63-6180	1	Asm-Brake Pedal LH (Incl. Ref. #27 & 30)
4	322-5	2	Screw-HH	27	256-42	4	Bushing
5	3220-6	1	Nut-Hex.	28	93-8742	2	Foot Pad-Brake
6	75-0560	1	Asm-Wheel-Steering (Incl. Ref. #7 & 41)	29	63-6190	1	Asm-Brake Pedal RH (Incl. Ref. #27 & 30)
7	68-5140	1	Asm-Steering Wheel Cap (Incl. Ref. #41)	30	302-5	2	Fitting-Grease
8	233-17	1	Knob	31	66-8140	1	Hose
9	63-7910	1	Rod-Brake Latch	32	66-8630	1	Tube-Hydraulic
10	3296-29	2	Nut-Lock	33	66-8620	1	Tube-Hydraulic
12	95-1821	1	Spring	34	2412-36	2	Clamp
13	3272-5	3	Pin-Cotter	35	3256-22	3	Washer-Flat
14	3256-26	1	Washer-Flat	36	237-30	2	O-Ring
15	63-7900	1	Rack-Brake	37	92-5080	1	Hose-Hydraulic
16	63-7730	1	Cable-Brake RH	38	237-22	2	O-Ring
*	63-7731	1	Cable-Brake LH	39	21-9260	1	Cover-Dust
17	283-58	4	Pin-Clevis	40	68-5370	1	Decal-Toro
18	3272-10	5	Pin-Cotter	41	32144-21	1	Screw-PPH
19	63-6750	2	Link-Brake Cable	42	3256-23	2	Washer-Flat
20	3-7243	2	Spring-Return	43	84-7670	2	Foam-Column Support
21	321-3	1	Screw-HH	44	84-7660	1	Clamp-Column
22	63-6210	1	Pin-Brake	45	3256-69	AR	Washer-Flat
23	63-7880	1	Pin-Brake Latch	46	92-5081	1	Hose-Hydraulic

*Not Illustrated

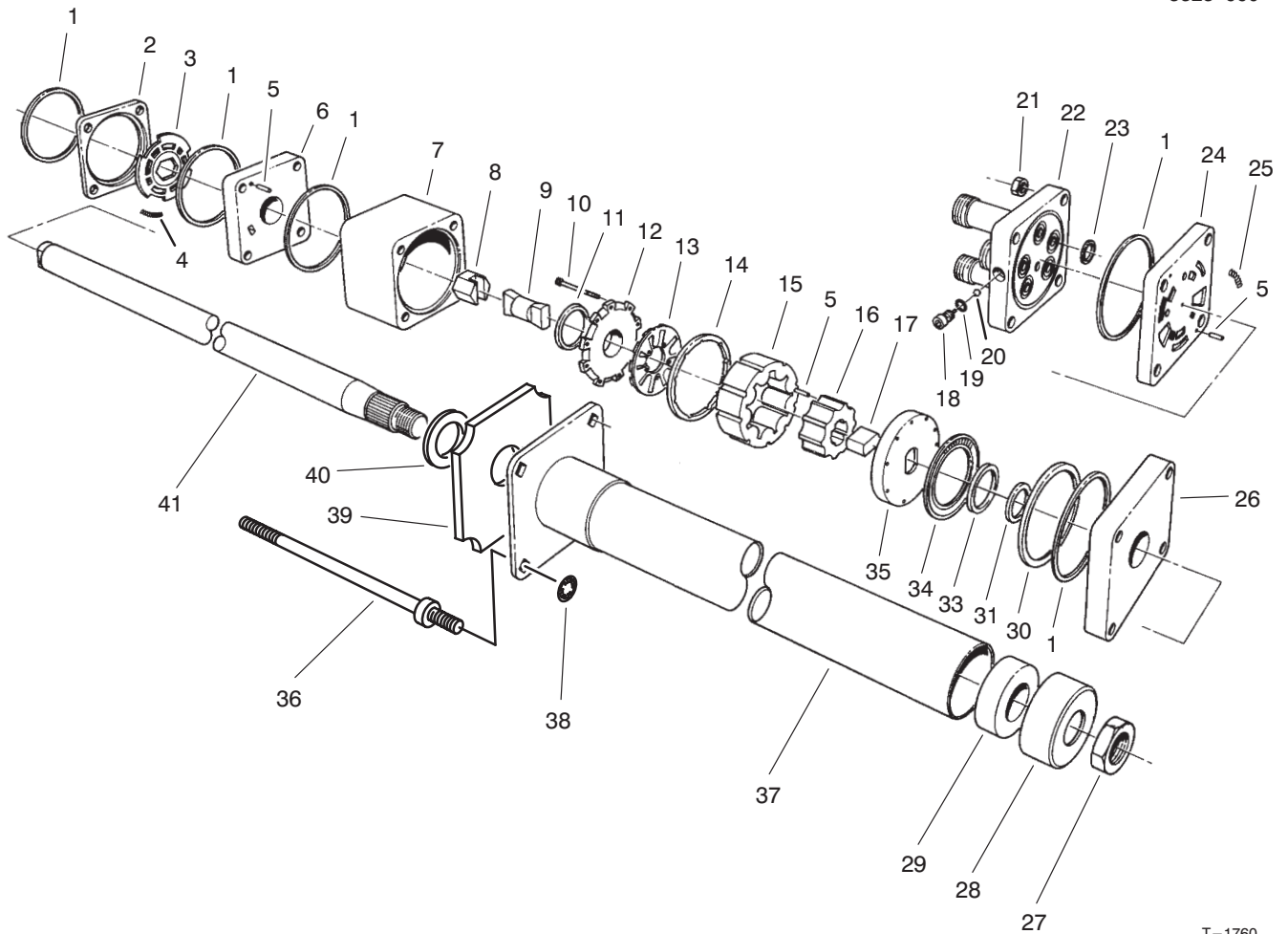


T-2354

Power Steering & Brake Pedal Assembly (Continued)

Ref. No.	Part No.	Qty.	Description
47	44-8530	1	Sock-Hose

Ref. No.	Part No.	Qty.	Description
----------	----------	------	-------------



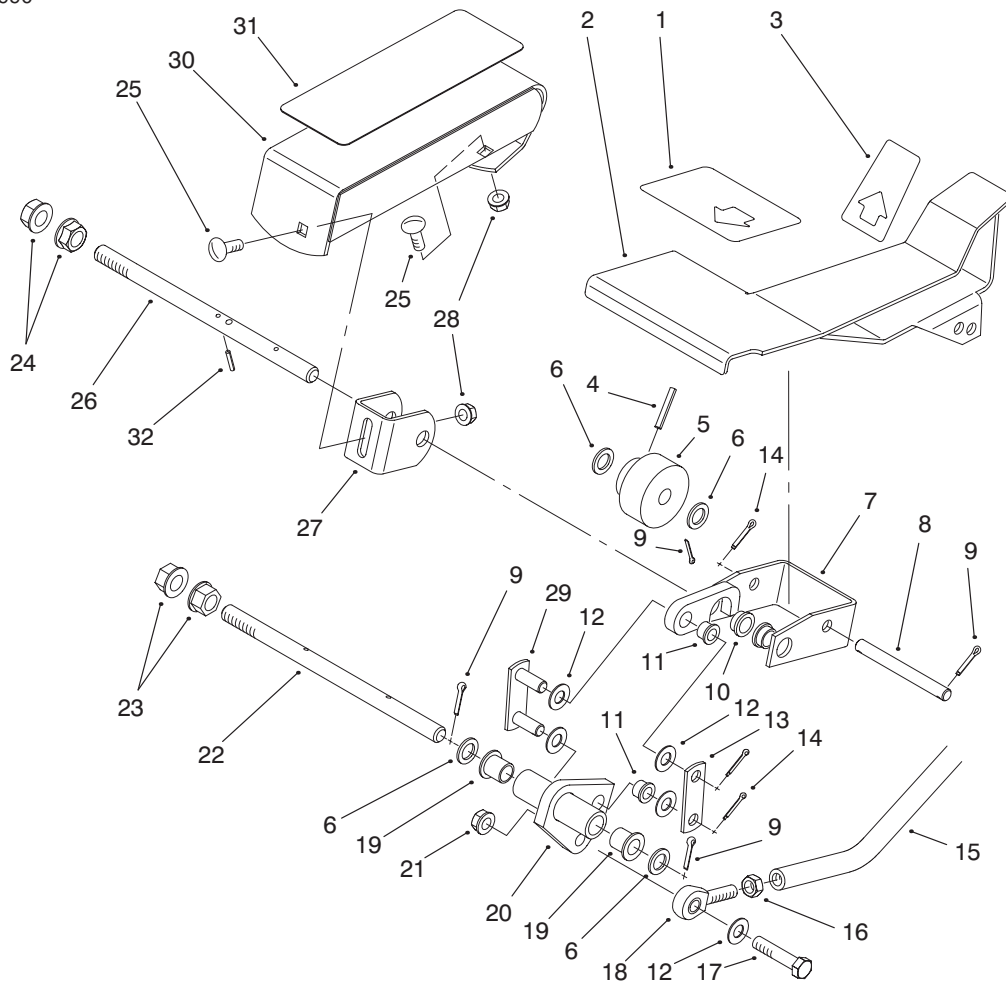
T-1760

Steering Valve Assembly No. 92-7308

Ref. No.	Part No.	Qty.	Description
1			Ring-Seal
2			Ring-Valve
3			Plate-Valve
4		3	Spring
5		9	Pin-Alignment
6		1	Manifold-Isolation
7		1	Ring-Metering
8		1	Asm-Hex. Drive
9		1	Link-Drive
10		11	Screw-HSH
11		1	Seal-Commutator
12		1	Cover-Commutator
13		1	Commutator
14		1	Ring-Commutator
15		1	Stator
16		1	Rotor
17		1	Spacer-Drive Link
18		1	Plug
19		1	O-Ring
20		1	Ball
21		4	Nut-Hex.
22		1	Cover-Port
23		5	O-Ring
24		1	Manifold-Port
25		3	Spring
26		1	Plate-Upper Cover

Ref. No.	Part No.	Qty.	Description
27	3220-6	1	Nut
28	92-7315	1	Seal
29		1	Bearing
30		1	Spacer-Bearing, Thrust
31		1	Spacer-Seal
33		1	Seal-Face
34		1	Bearing-Thrust
35		1	Plate-Drive
36	92-7310	4	Bolt-Special
37		1	Upper Cover & Jacket
38	92-7316	4	Nut-Push On
39	92-7317	1	Foam
40		1	Washer-Retaining
41		1	Shaft-Input
*	66-9970	1	Kit-Spring (Incl. Ref. #4 & 25)
*	66-9980	1	Kit-Seal (Incl. Ref. #1, 11, 19, 23, 31 & 33)
*	66-9990	1	Kit-Needle Roller (Incl. Ref. #5)
*	92-7314	1	Asm-Column (Incl. Ref. #27-29 & 37-41)

*Not Illustrated

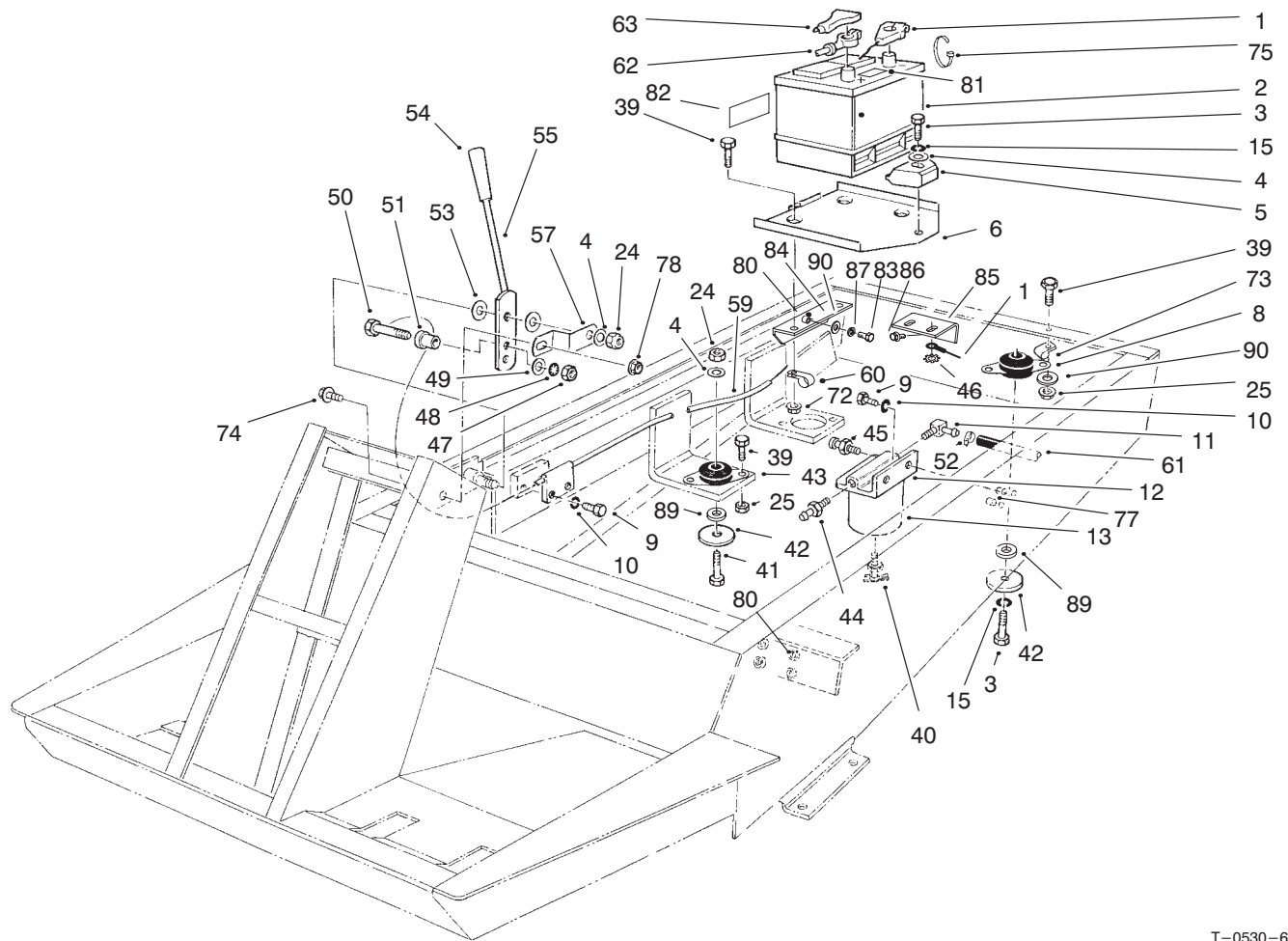


T-1688C

Traction Pedal Assembly

Ref. No.	Part No.	Qty.	Description
1	94-3307	1	Pad-Traction Pedal Front
2	94-3591	1	Pedal-Traction
3	94-3308	1	Pad-Traction Pedal Rear
4	32121-6	1	Pin-Roll
5	28-5220	1	Wheel-Friction
6	5-7570	4	Washer
7	92-5093	1	Bracket-Pivot
8	92-5537	1	Pin-Pedal Pivot
9	3272-10	4	Pin-Cotter
10	256-156	2	Bushing-Flange
11	256-116	2	Bushing
12	3256-24	5	Washer-Flat
13	92-5721	1	Plate-Link
14	3272-6	3	Pin-Cotter
15	92-5536	1	Tube-Traction Control
16	3220-3	1	Nut-Jam
17	323-9	1	Screw-HH
18	2411-36	1	End-Rod
19	256-219	2	Bushing
20	92-5094	1	Arm-Traction
21	3296-39	1	Nut-Lock
22	92-5075	1	Shaft-Traction Pedal
23	32128-49	2	Nut-Flange
24	32128-56	2	Nut-Flange

Ref. No.	Part No.	Qty.	Description
25	3230-2	2	Bolt-CARR
26	92-5534	1	Shaft-Traction Pedal
27	92-5077	1	Bracket-Footrest
28	32128-44	2	Nut-Flange Lock
29	92-5532	1	Link
30	92-5514	1	Footrest
31	92-5750	1	Pad-Footrest
32	32128-50	1	Pin-Roll

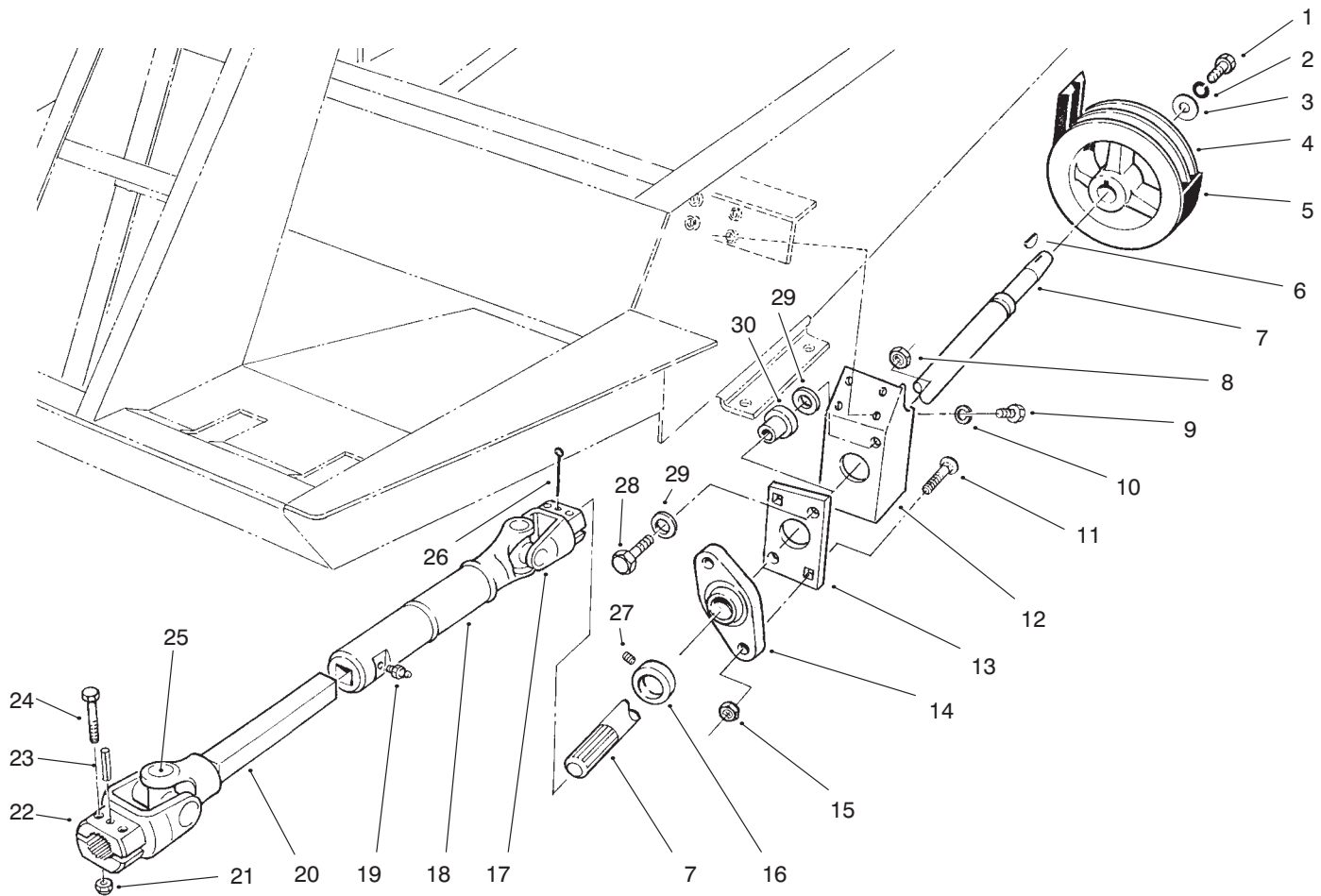


T-0530-6

Battery & Engine Mount Assembly

Ref. No.	Part No.	Qty.	Description	Ref. No.	Part No.	Qty.	Description
1	63-7340	1	Wire-Ground	47		1	Tooth
†2		1	Battery	48		1	Nut-Hex.
3	323-10	2	Screw-HH	49		1	Washer-Lock ITLW
4	3256-24	4	Washer-Flat	50		1	Washer-Flat
5	66-2490	1	Clamp-Battery Retainer	51		1	Screw-Special
6	94-7343	1	Base-Battery	52	2412-108	2	Sleeve-Connector
8	63-7141	1	Mount-Shock (Red)	53	66-2920	2	Clamp
9	321-4	4	Screw-HH	54	233-39	1	Washer-Friction
10	3253-3	4	Washer-Lock	55	71-3500	1	Knob
11	353-781	1	Fitting 90#	57	66-2670	1	Lever-Throttle
12	63-8280	1	Asm-Head	59	76-1000	1	Bracket-Throttle
13	63-8300	1	Element-Spin-On	60	92-5753	1	Cable-Throttle
15	3253-21	2	Washer-Lock	61	63-7610	1	Clamp-Hose
24	3296-39	5	Nut-Lock	62	43-4031	1	Hose
25	3296-29	10	Nut-Lock	63	28-1280	1	Cable-Battery Positive
39	322-5	13	Screw-HH	72	32128-20	3	Boot-Positive Cable
40	63-8310	1	Valve-Drain	73	98-3883	2	Nut-Flange
41	323-11	3	Screw-HH	74	3234-13	1	R-Clamp
42	63-7400	4	Washer-Rebound	75	3290-378	1	Screw-HFH
43	63-7142	3	Mount-Shock (Yellow)	77	32148-11	2	Tie-Cable
44	353-783	1	Fitting-Straight	78	32128-33	1	Nut-Clinch
45	63-8290	1	Vent-Air	80	32148-8	6	Nut-HHF
46	3255-8	1	Washer-Lock, Ext.	81	93-7276	1	Nut-Clinch
							Decal-Danger

†Obtain Locally



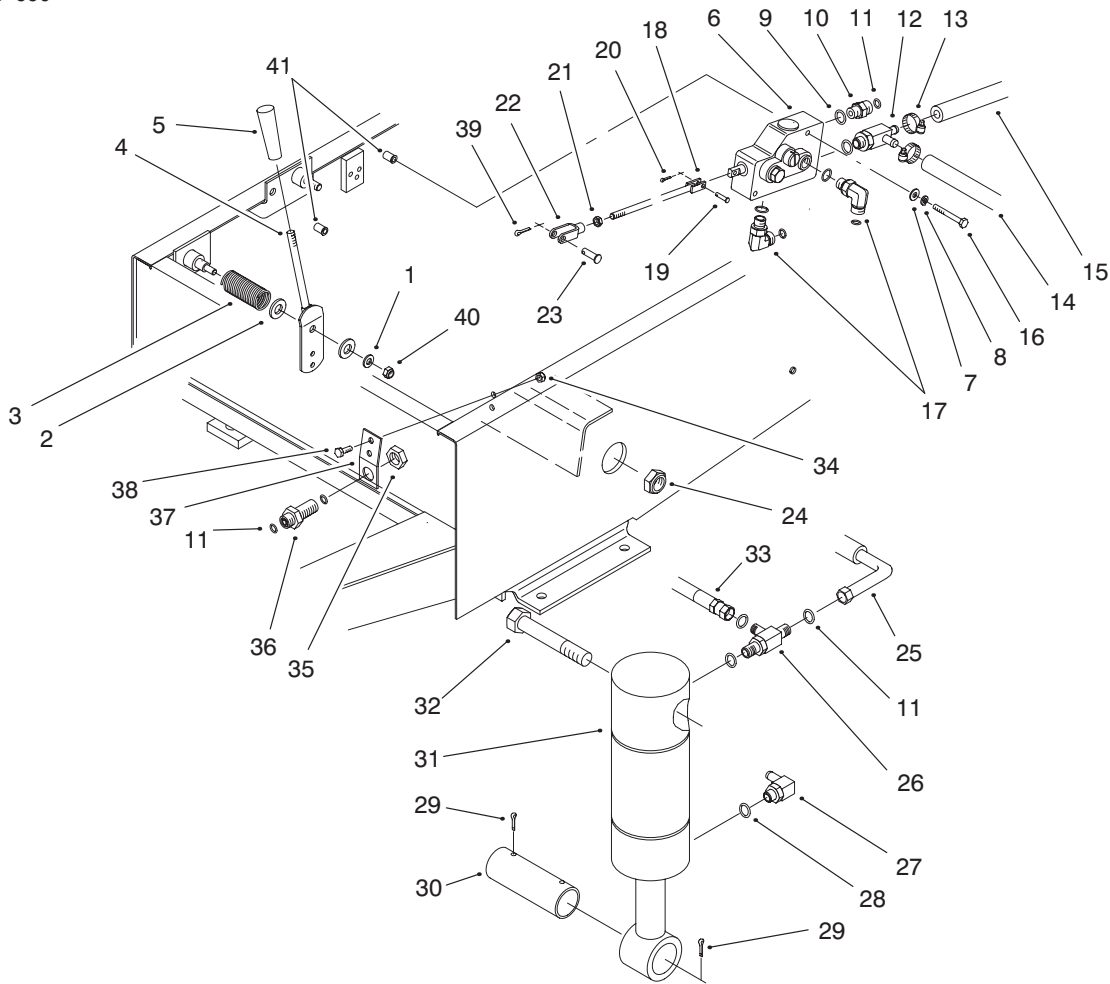
T-2745-1

Power Take Off Assembly

Ref. No.	Part No.	Qty.	Description
1	323-18	1	Screw-HH
2	3253-21	1	Washer-Lock
3	29-4730	1	Washer-PTO
4	43-5320	1	Pulley-PTO
5	63-6240	1	Belt-PTO
6	3257-5	1	Key-Woodruff
7	92-8855	1	Shaft-PTO
8	3296-39	2	Nut-Lock
9	322-5	4	Screw-HH
10	3253-4	4	Washer-Lock
11	3230-4	2	Bolt-CARR
12	92-8751	1	Bracket-PTO Bearing
13	84-7580	1	Plate-Bushing Support
14	92-8799	1	Asm-PTO Shaft Bearing (Incl. Ref. #16 & 27)
15	32149-1	2	Nut-Lock
16	251-77	1	Collar-Locking
17	54-9090	1	Yoke-End
18	54-9170	1	Tube-Slip Yoke
19	302-58	1	Fitting-Grease
20	54-9050	1	Shaft-Slip Yoke
21	3296-29	4	Nut-Lock
22	54-9040	1	Yoke-End
23	32121-34	1	Pin-Roll
24	322-9	4	Screw-HH

Ref. No.	Part No.	Qty.	Description
25	54-9180	2	Kit-Universal Joint
26	3272-15	1	Pin-Cotter
27	3245-35	1	Screw-Set
28	323-10	2	Screw-HH
29	63-8410	4	Washer-Flat
30	63-9750	2	Mount
*	54-7950	1	Asm-Drive Shaft (Incl. Ref. #17-20, 22 & 25)

*Not Illustrated



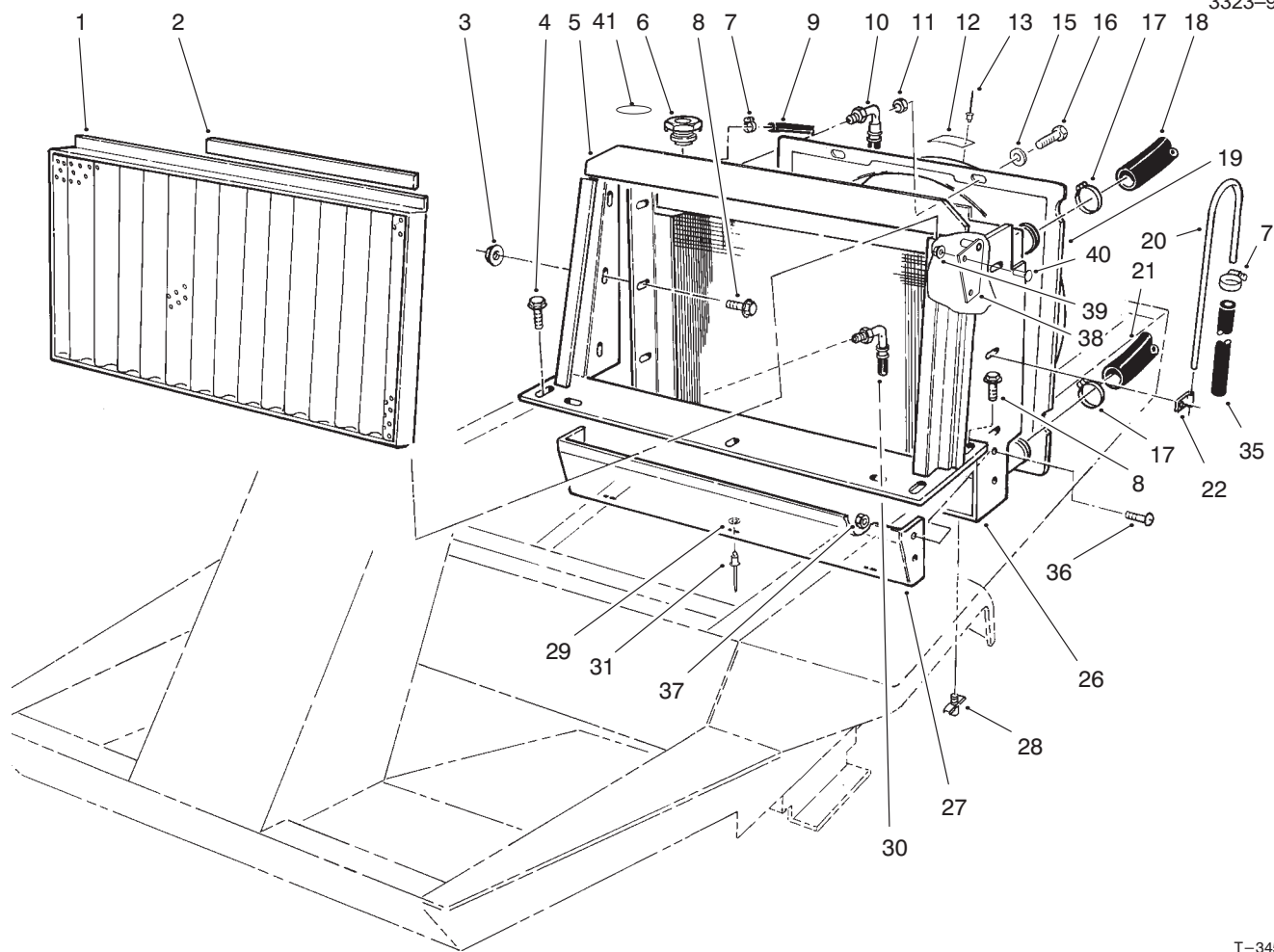
T-0531-5

Hydraulic Lift System Assembly

Ref. No.	Part No.	Qty.	Description
1	3256-23	1	Washer-Flat
2	3256-26	2	Washer-Flat
3	70-7530	1	Spring-Compression
4	66-2720	1	Lever-Lift
5	233-39	1	Knob
6	63-7960	1	Valve-Lift
7	3256-22	2	Washer-Flat
8	3253-3	2	Washer-Lock
9	237-42	6	O-Ring
10	340-2	1	Fitting-Hydraulic Straight (Incl. Ref. #9 & 11)
11	237-22	9	O-Ring
12	66-3130	1	Fitting-Hydraulic Tee (Incl. Ref. #9)
13	2412-36	3	Clamp-Hose
14	66-8150	1	Hose-Hydraulic
15	66-8500	1	Hose
16	321-11	2	Screw-HH
17	340-77	2	Fitting-Hydraulic 90# (Incl. Ref. #9 & 11)
18	76-4830	1	Rod-Tie
19	283-16	1	Pin-Clevis
20	3272-5	1	Pin-Cotter
21	3220-2	1	Nut-Jam RH
22	282-27	1	Clevis

Ref. No.	Part No.	Qty.	Description
23	283-58	1	Pin-Clevis
24	3296-15	2	Nut-Lock
25	66-8190	1	Hose-Hydraulic
26	340-86	1	Fitting-Hydraulic Tee (Incl. Ref. #9 & 11) (Used On Cap End of Left Cylinder)
*	340-77	1	Fitting-Hydraulic 90# (Incl. Ref. #9 & 11) (Used On Cap End of Right Cylinder)
27	304-99	2	Fitting-Hydraulic 90# (Incl. Ref. #28)
28	237-78	2	O-Ring
29	3272-23	4	Pin-Cotter
30	27-4240	2	Pin-Cylinder
31	63-6630	2	Cylinder-Lift
32	3216-3	2	Screw-HH
33	66-8640	1	Hose-Hydraulic
34	3296-42	2	Nut-Lock
35	340-70	1	Nut-Fitting
36	340-71	1	Fitting-Hydraulic Bulkhead (Incl. Ref. #11 & 35)
37	63-7410	1	Bracket-Bulkhead

*Not Illustrated

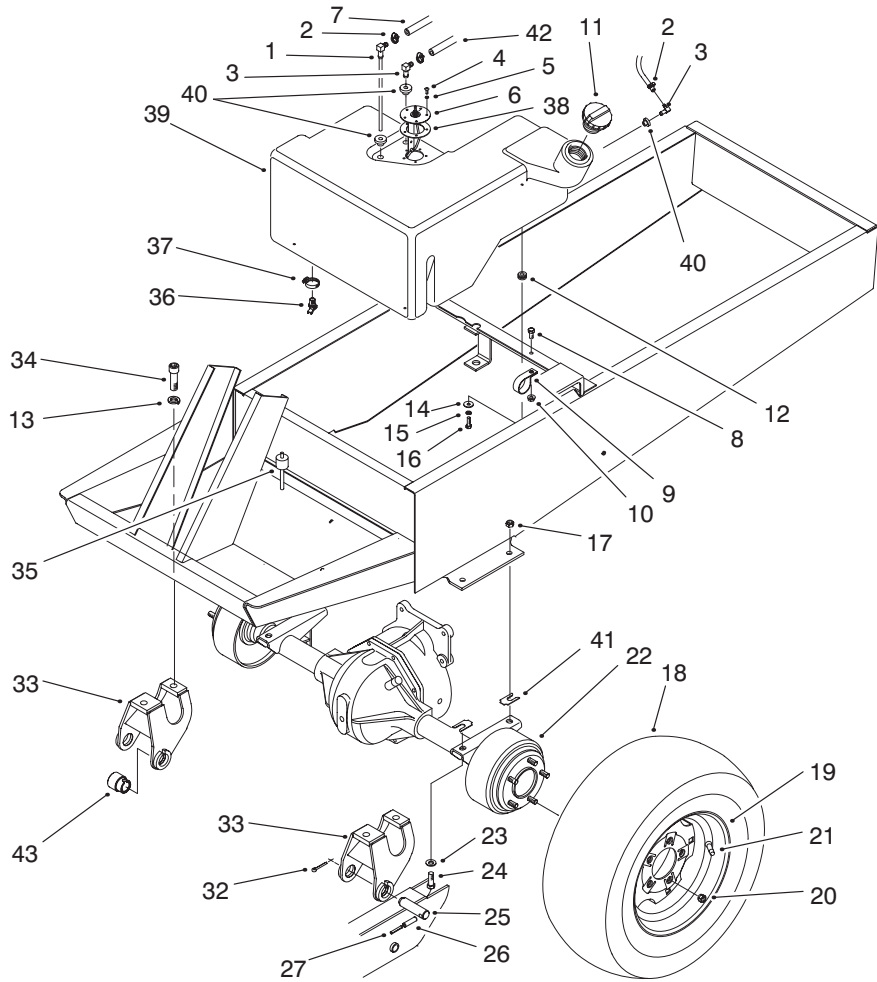


T-3451

Radiator Assembly

Ref. No.	Part No.	Qty.	Description	Ref. No.	Part No.	Qty.	Description
1	63-7700	1	Asm-Screen	30	66-8500	1	Asm-Hose
2	63-7710	1	Magnetic Strip	31	3269-13	3	Rivet
3	32128-20	6	Nut-Lock	35	94-4522	1	Hose
4	3234-17	2	Screw-HFH	36	3249-3	2	Screw-Round Hd.
5	92-5757	1	Asm-Radiator Support	37	3217-29	2	Nut-Hex.
6	66-3240	1	Cap-Radiator	*	93-7840	1	Decal-Radiator Cap (Europe)
7	2412-108	6	Clamp-Hose	38	100-6568	1	Lock Plate ASM
8	3234-5	8	Screw-HFH	39	32128-33	2	Nut
9	71-3384	1	Hose	40	3229-1	2	Screw
10	66-8180	1	Asm-Hose	41	93-7840	1	Decal
11	3296-42	4	Nut-Lock				
12	98-9335	1	Plate-Warning				
13	3290-55	2	Rivet				
15	3256-22	4	Washer-Flat				
16	321-4	4	Screw-HH				
17	2412-34	4	Clamp-Hose				
18	93-9940	1	Hose-Upper				
19	92-6503	1	Asm-Fan Shroud (Incl. Ref. #12 & 13)				
20	66-3180	1	Tube-Vent				
21	63-6020	1	Hose-Lower				
22	2412-103	2	Clamp-R				
26	82-2310	1	Asm-Radiator				
27	63-6440	1	Shield-Radiator				
28	304-46	1	Drain Cock				
29	3269-10	3	Washer-Flat				

*Not Illustrated



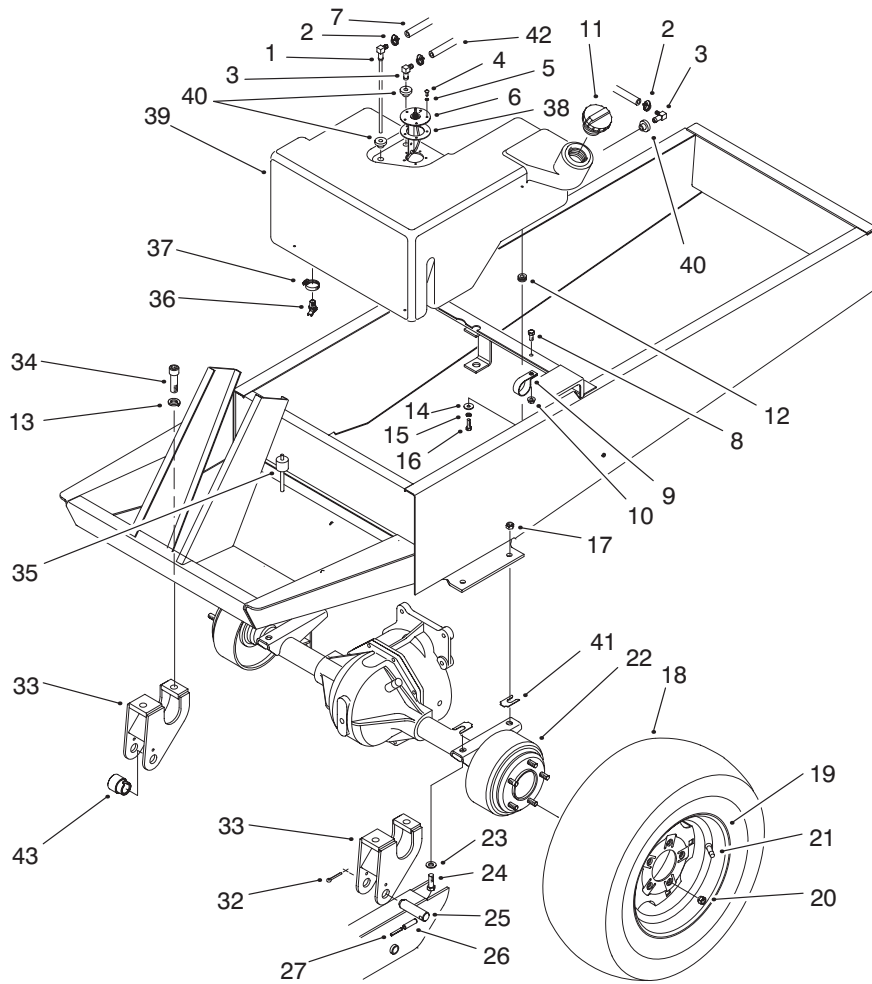
T-3452

Fuel Tank & Axle Assembly

Ref. No.	Part No.	Qty.	Description
1	66-8120	1	Standpipe
2	2412-108	4	Clamp
3	94-6765	2	Fitting-Fuel 90#
4	32122-24	5	Screw-Machine
5	3253-15	5	Washer-Lock
6	63-7640	1	Sender-Fuel
7	63-7630	1	Hose
8	322-3	1	Screw-HH
9	2412-147	1	R-Clamp
10	32128-20	1	Nut-Lock
11	93-3102	1	Cap-Fuel
12	237-136	3	Grommet
13	3253-8	4	Washer-Lock
14	3256-67	3	Washer-Flat
15	3253-3	3	Washer-Lock
16	321-5	3	Screw-HH
17	3296-48	4	Nut-Lock
18	231-101	2	Tire-23" x 8.5" x 12"
*	231-95	2	Tire-23" x 10.5" x 12" 4 Ply (Optional)
*	69-9880	2	Tire-23" x 10.5" x 12" 6 Ply (Optional)
19	217-117	2	Rim-23" x 8.5" x 12"
*	217-116	1	Rim-23" x 10.5" x 12"

Ref. No.	Part No.	Qty.	Description
			(Optional)
20	23-7270	10	Nut-Lug
21	232-27	2	Valve Stem w/Cap (For Standard 8.5" Rim)
*	232-27	2	Valve Stem w Cap (For Optional 10.5" Rim)
22	92-2377	1	Asm-Axle
23	3256-25	4	Washer-Flat
24	324-5	4	Screw-HH
25	98-2348	2	Pin-Pivot (Incl. Ref. #22 & 23)
26	32121-49	2	Pin-Spring
27	32121-71	2	Pin-Spring
32	3272-17	2	Pin-Cotter
33	98-2328	2	Bracket-Carrier
34	3273-38	4	Screw-HH
35	66-3060	1	Dipstick-Differential
36	304-46	1	Fitting-Drain
37	2412-36	1	Clamp
38	62-7650	1	Gasket
39	98-5001	1	Tank-Fuel
40	46-6560	3	Bushing
41	42-6080	A/R	Shim-Axle

*Not Illustrated

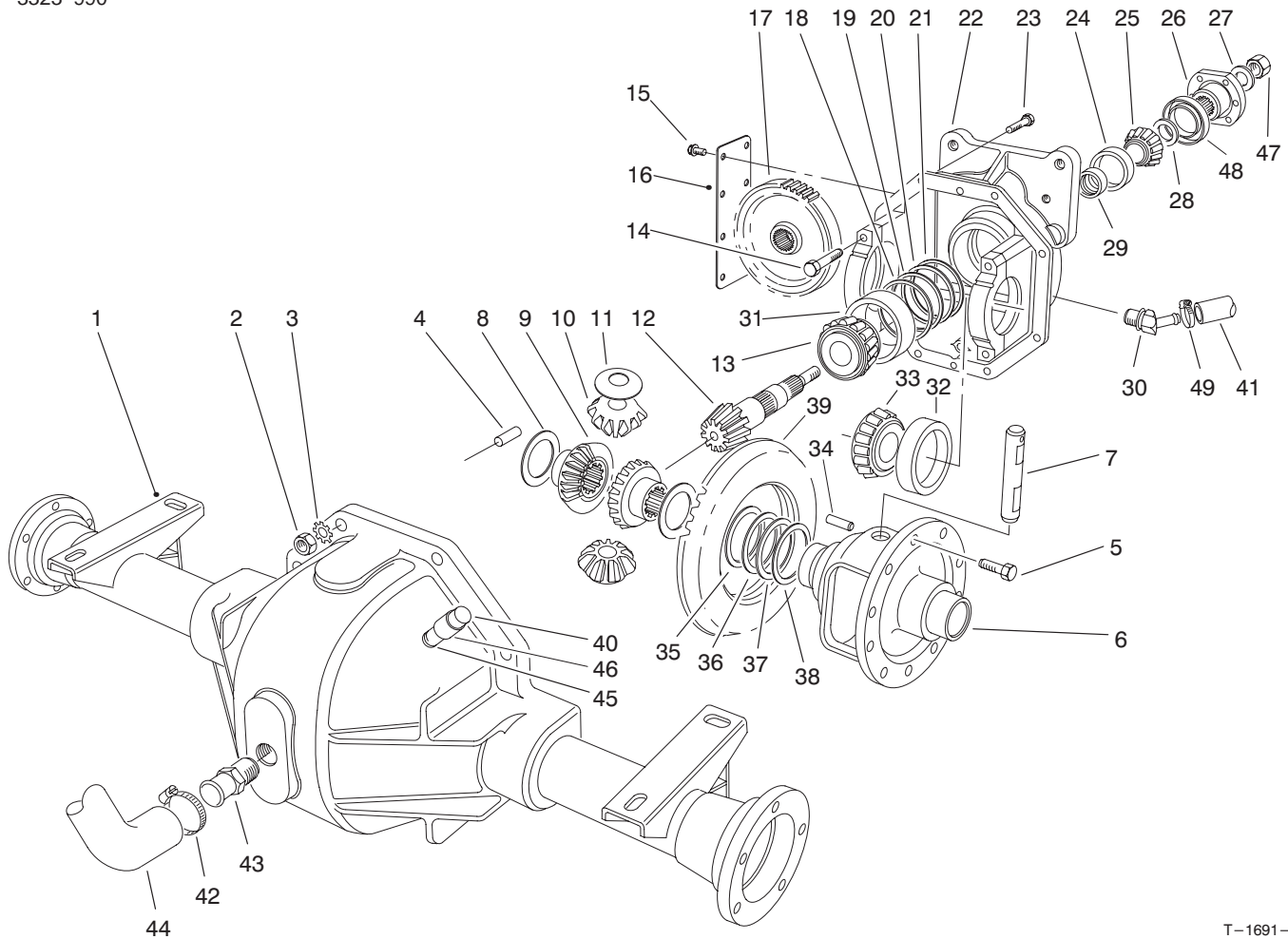


T-0534-6

Fuel Tank & Axle Assembly (Continued)

Ref. No.	Part No.	Qty.	Description	Ref. No.	Part No.	Qty.	Description
42	93-1627	1	Hose-Fuel				
43	98-7926	4	Spacer-Lift Arm				
*	62-7020	2	Asm-Wheel & Tire (Opt.) (23" x 10.5" x 12" 4 Ply)				
*	69-9870	2	Asm-Wheel & Tire . (Opt.) (23" x 10.5" x 12" 6 Ply)				

*Not Illustrated



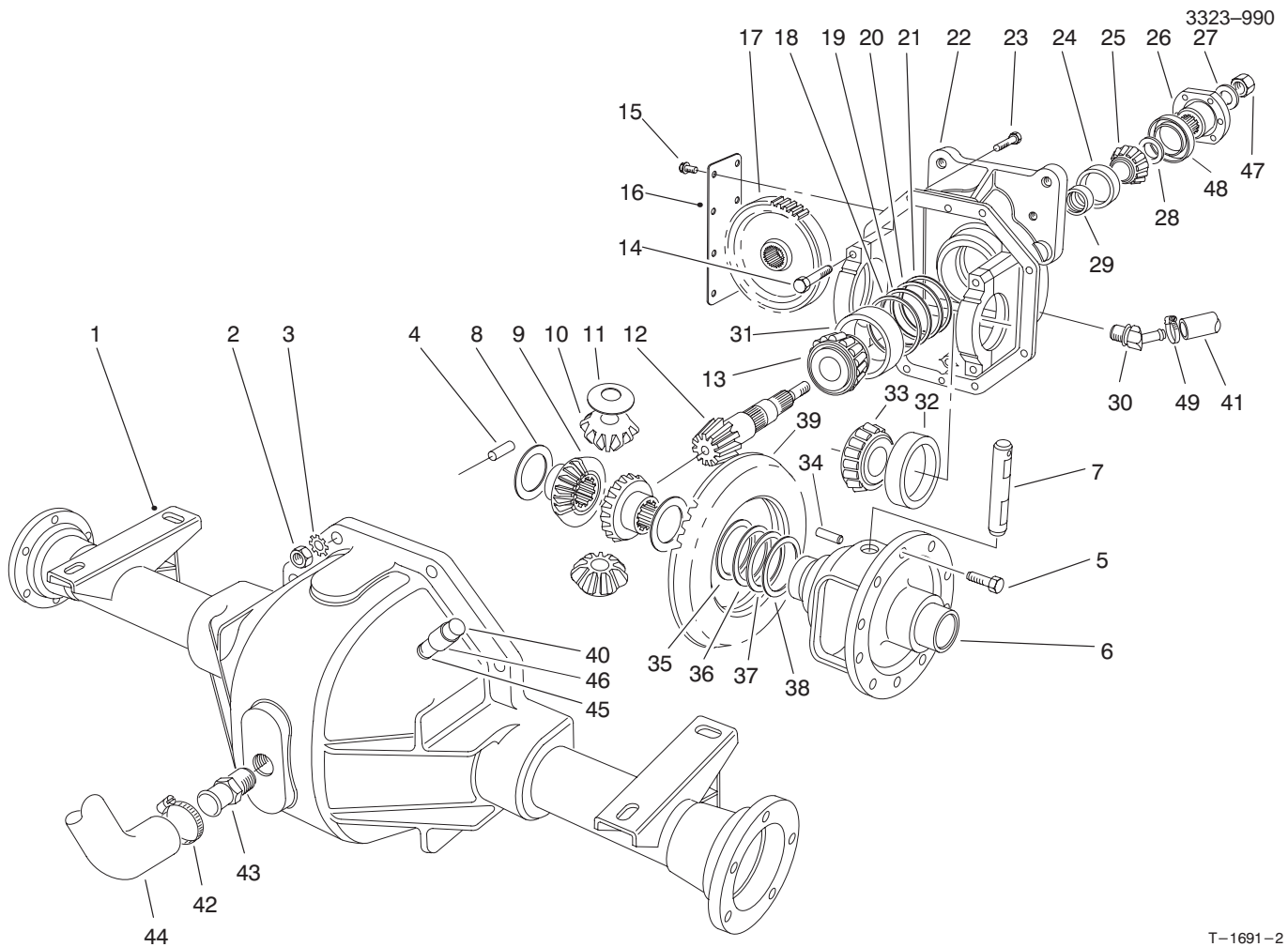
T-1691-2

Front Axle Assembly No. 92-2377

Ref. No.	Part No.	Qty.	Description
1	63-8090	1	Asm-Lower Housing
2	3219-2	8	Nut
3	3255-8	8	Washer-Lock, Ext. Tooth
4	21-8270	2	Pin-Dowel
5	21-7770	5	Screw-Drive Gear
6	21-7670	1	Differential Case
7	21-7700	1	Shaft-Pinion Mate
8	21-7720	2	Washer-Thrust
9	24-8790	2	Gear-Bevel, Differential
10	21-7690	2	Gear-Pinion
11	21-7730	2	Washer-Thrust
12		1	Drive Pinion
13	43-6760	1	Cone-Bearing, Tapered
14	92-1773	4	Screw-HH
15	12-5450	8	Screw-Thread Forming
16	21-7830	1	Cover-Gear
17	86-7230	1	Gear-Spur
18	43-6710	A/R	Shim Adjusting Differential Bearing .003
19	43-6711	A/R	Shim Adjusting Differential

Ref. No.	Part No.	Qty.	Description
20	43-6712	A/R	Bearing .005 Shim Adjusting Differential Bearing .010
21	43-6713	A/R	Shim Adjusting Differential Bearing .030
22	86-7190	1	Asm-Upper Housing (Incl. Ref. #14)
23	3210-7	8	Screw-HH
24	254-90	1	Cup-Bearing
25	254-91	1	Cone-Bearing
26	68-7010	1	Flange
27	71-4340	1	Washer
28	72-3570	A/R	Shim .094-Diff. Adjust.
*	72-3571	A/R	Shim .096-Diff. Adjust.
*	72-3572	A/R	Shim .098-Diff. Adjust.
*	72-3573	A/R	Shim .100-Diff. Adjust.
*	72-3574	A/R	Shim .102-Diff. Adjust.
*	72-3575	A/R	Shim .104-Diff. Adjust.
*	72-3576	A/R	Shim .106-Diff. Adjust.
*	72-3577	A/R	Shim .108-Diff. Adjust.
*	72-3578	A/R	Shim .110-Diff. Adjust.
*	72-3580	A/R	Shim .112-Diff. Adjust.
*	72-3581	A/R	Shim .114-Diff. Adjust.

*Not Illustrated



T-1691-2

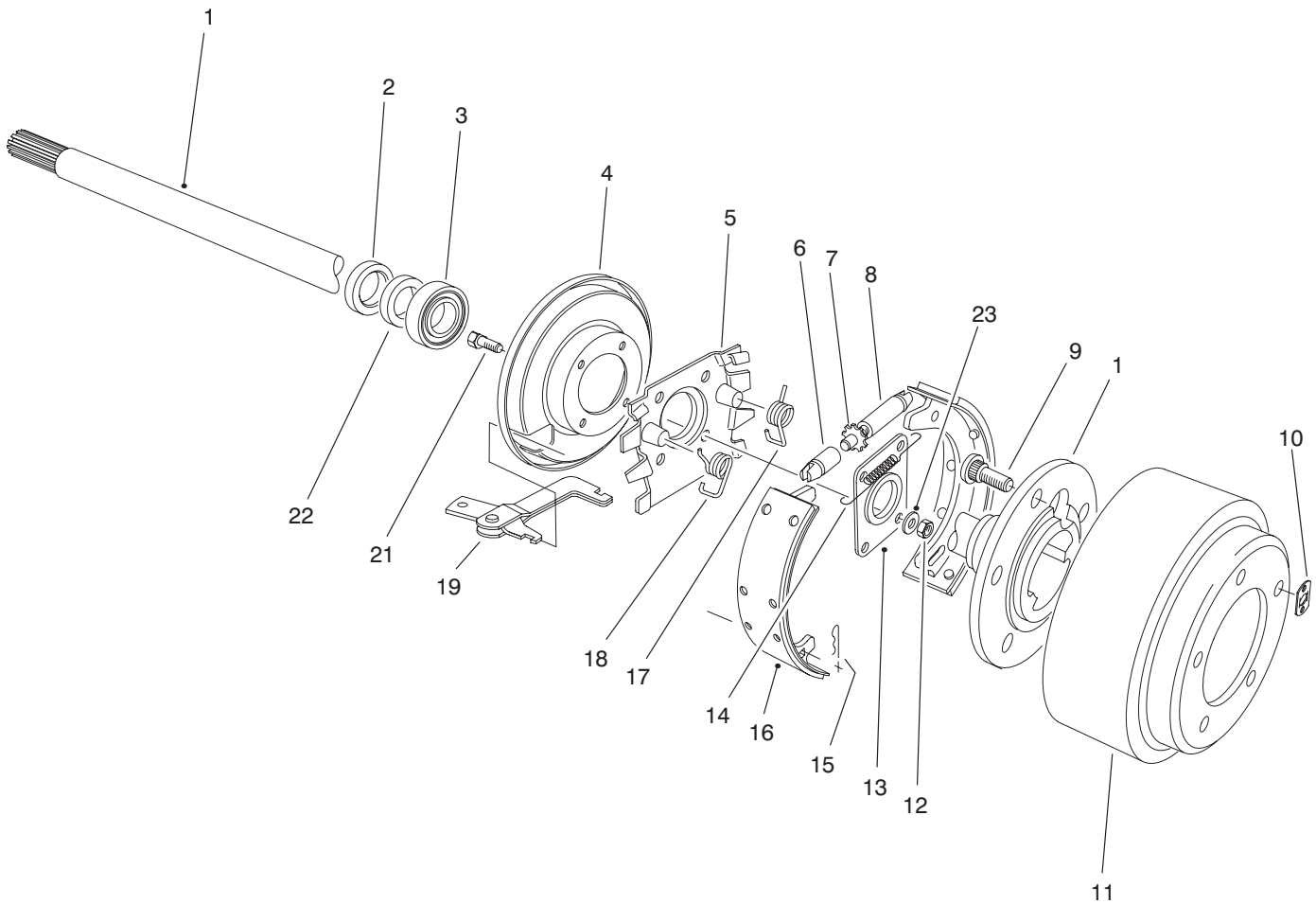
Front Axle Assembly No. 92-2377 (Continued)

Ref. No.	Part No.	Qty.	Description
*	72-3583	A/R	Shim .118-Diff. Adjust.
*	72-3584	A/R	Shim .120-Diff. Adjust.
*	72-3585	A/R	Shim .125-Diff. Adjust.
*	72-3586	A/R	Shim .127-Diff. Adjust.
*	72-3587	A/R	Shim .129-Diff. Adjust.
*	72-3588	A/R	Shim .131-Diff. Adjust.
*	72-3582	A/R	Shim .116-Diff. Adjust.
28	72-3590	A/R	Shim .133-Diff. Adjust.
*	72-3591	A/R	Shim .135-Diff. Adjust.
*	72-3592	A/R	Shim .137-Diff. Adjust.
*	72-3593	A/R	Shim .139-Diff. Adjust.
*	72-3594	A/R	Shim .141-Diff. Adjust.
*	72-3595	A/R	Shim .143-Diff. Adjust.
*	72-3596	A/R	Shim .145-Diff. Adjust.
*	72-3597	A/R	Shim .147-Diff. Adjust.
*	72-3598	A/R	Shim .149-Diff. Adjust.
*	72-3600	A/R	Shim .151-Diff. Adjust.
29	21-8020	1	Spacer-Frt. Pinion Bearing
†30	92-5088	1	Fitting-45#
31	43-6750	1	Cup-Bearing
32	254-66	2	Cup-Bearing
33	254-65	2	Cone-Bearing
34	32121-15	1	Pin-Roll
35	21-8090	A/R	Differential Adjust. Shim .003

Ref. No.	Part No.	Qty.	Description
36	21-8100	A/R	Differential Adjust. Shim .005
37	21-8110	A/R	Differential Adjust. Shim .010
38	21-8120	A/R	Differential Adjust. Shim .030
39		1	Gear-Ring
40	72-9420	1	Asm-Vent
†41	92-5083	1	Hose-Hydraulic
†42	2412-34	2	Clamp-Hose
†43	354-71	1	Pipe Nipple
†44	77-0550	1	Tube-Fill
45	289-6	1	Nipple-Pipe
46	2810-1	1	Coupler
47	71-4350	1	Nut
48	71-4330	1	Seal
†49	2412-119	1	Clamp-Hose
*	92-1676	1	Asm-Gear & Pinion (Incl. Ref. #12 & 39)
*	92-4907	1	Asm-Diff. Carrier (Incl. Ref. #5-22, 24-29, 31-39 & 47-48)

*Not Illustrated

†Order item separately



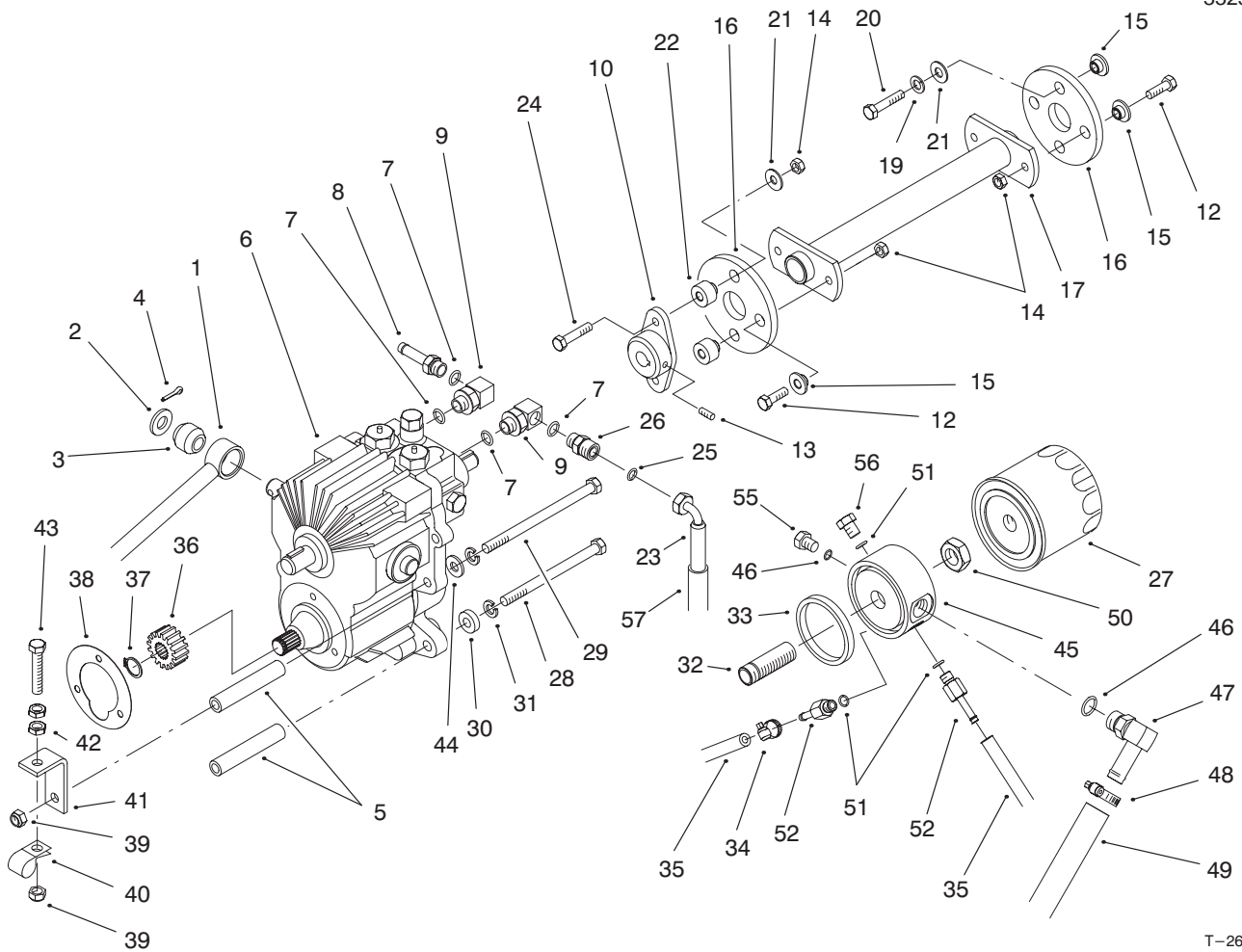
T-2664-2

Brake Assembly

Ref. No.	Part No.	Qty.	Description
1	27-6861	1	Shaft-Axle, Flanged LH
*	27-6851	1	Shaft-Axle, Flanged RH
2	92-1774	2	Oil Seal
3	21-8180	2	Bearing-Tapered Roller
4	21-9450	2	Dust Shield
5	43-6810	2	Torque Spider
6	21-9390	2	Socket-Adjusting Screw
7	21-9370	2	Adjusting Screw
8	21-9380	2	Nut-Pivot
9	242-34	10	Stud-Axle Flange
10	21-8360	2	Clip-Retaining
11	28-0680	2	Brake Drum
12	94-6935	8	Nut-Lock, Top
13	28-0670	2	Oil Seal
14	21-9440	2	Screw-Spring Adjusting
15	21-9460	4	Retainer-Parking Brake
16	84-8600	1	Brake Shoe Set (Incl. 4 Shoes)
17	21-9420	2	Spring-Shoe Return RH
18	21-9430	2	Spring-Shoe Return

Ref. No.	Part No.	Qty.	Description
19	24-9180	2	LH Strut/Lever-Parking Brake
21	94-6934	8	Screw-HH
22	24-8840	2	Ring-Wheel Bearing
23	94-6936	8	Washer
*	92-8775	1	Kit-Gasket, Liquid

*Not Illustrated

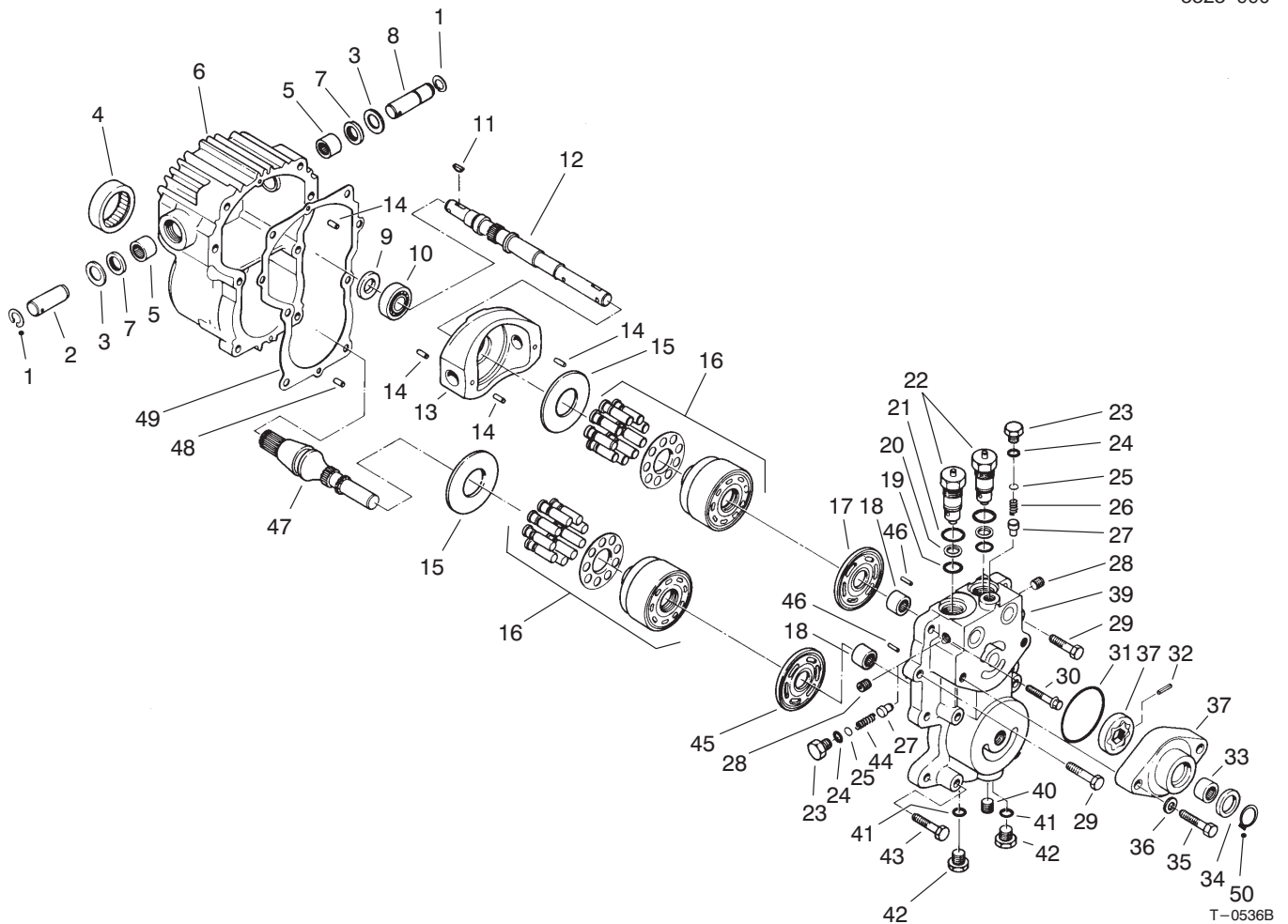


T-2665-2

Transmission & Drive Coupling Assembly

Ref. No.	Part No.	Qty.	Description
1	92-5536	1	Tube-Traction Control
2	3256-26	1	Washer-Flat
3	23-2270	1	Bushing-Rubber
4	3272-10	1	Pin-Cotter
5	27-3680	4	Spacer-Mounting
6	92-5513	1	Transmission
7	237-42	4	O-Ring
8	353-979	1	Hose Barb (Incl. Ref. #7)
9	66-3110	2	Hyd. Fitting (Incl. Ref. #7)
10	27-4370	1	Hub-Pump
12	3210-5	4	Screw-HH
13	3241-6	2	Screw-Set
14	32152-5	6	Nut-Lock
15	27-6600	6	Spacer-Rubber
16	44-2230	2	Coupling-Rubber
17	63-6610	1	Drive Shaft
19	42-9850	2	Washer-Lock
20	48-9460	2	Screw-HH
21	3256-71	4	Washer-Flat
22	27-6590	2	Spacer
23	66-8490	1	Asm-Hose
24	3210-8	2	Screw-HH
25	237-22	1	O-Ring

Ref. No.	Part No.	Qty.	Description
26	82-8530	1	Fitting (Incl. Ref. #7 & 25)
27	23-2300	1	Oil Filter
28	323-39	3	Screw-HH
29	27-9620	1	Screw-HH
30	5-0652	1	Spacer
31	3253-21	4	Washer-Lock
32	92-5085	1	Union-Filter
33	92-5087	1	Seal-Filter Adapter
34	2412-108	4	Hose Clamp
35	92-5082	2	Hose
36	86-7220	1	Gear-Spur
37	936125	1	Ring-Retaining
38	27-3690	1	Gasket-Transmission
39	3296-39	2	Nut-Lock
40	2412-4	1	R-Clamp
41	63-7170	1	Anchor-Transmission
42	3218-3	2	Nut-Jam
43	67-1900	1	Screw-HH
44	3256-24	1	Washer-Flat
45	92-5076	1	Adapter-Filter
46	237-79	2	O-Ring
47	92-5086	1	Fitting-Hydraulic 90# (Incl. Ref. #46)
48	2412-119	1	Clamp-Hose

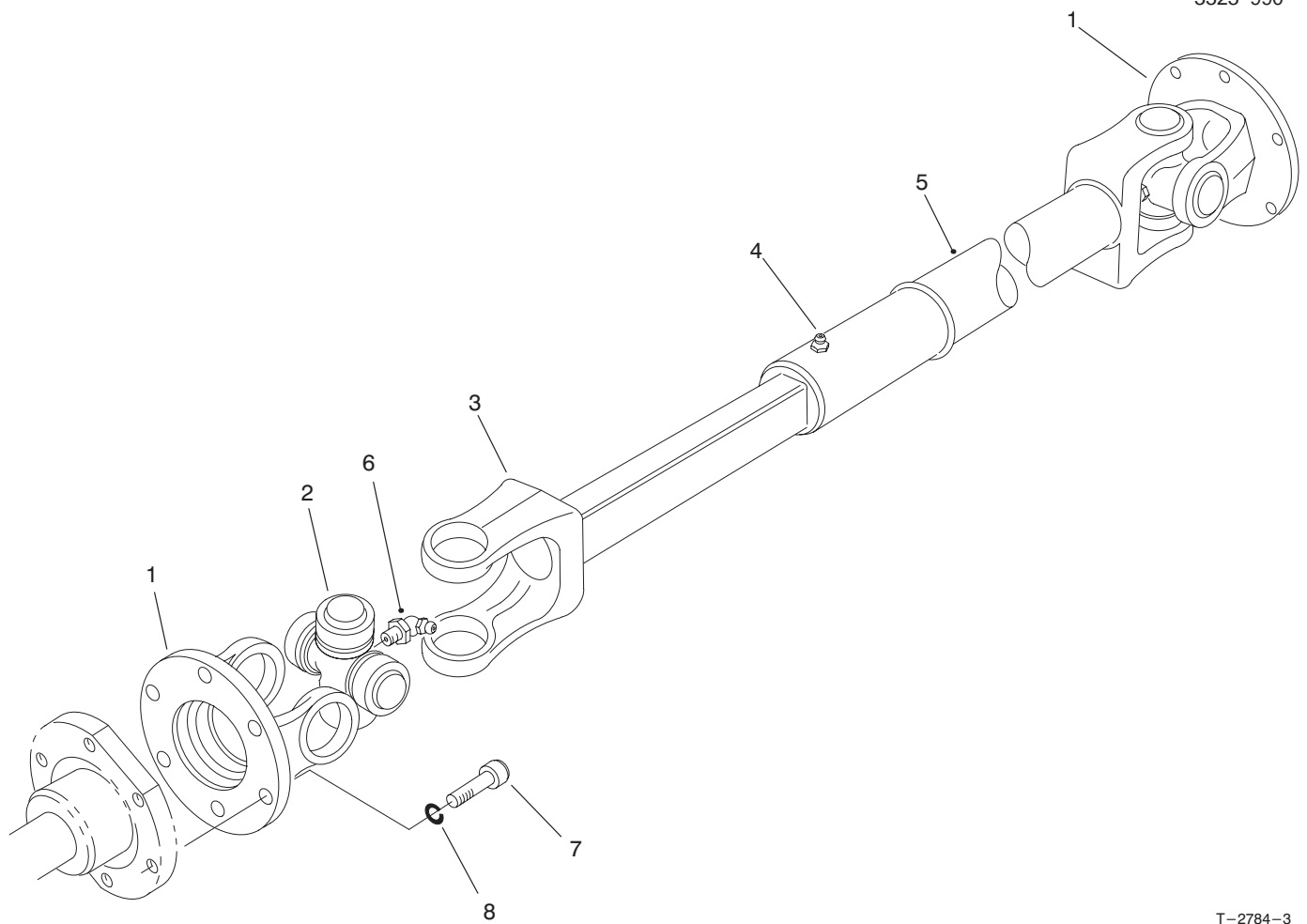


Transmission Assembly No. 92-5513

Ref. No.	Part No.	Qty.	Description	Ref. No.	Part No.	Qty.	Description
1	32151-46	2	Ring-Retaining	26	46-7310	1	Relief Valve Spring Imp.
2	25-2500	1	Shaft-Trunnion	27	28-3420	2	Relief Valve Cone Charge
3	25-2510	2	Washer	28	285-17	4	Plug-Pipe
4	28-3300	1	Bearing-Roller	29	323-8	2	Screw-HH
5	28-3310	2	Bearing-Needle	30	28-3530	2	Screw-HH
6	92-5709	1	Housing	31	28-3520	1	O-Ring
7	25-3210	2	Lip Seal	32	38-2680	1	Pin
8	28-3670	1	Shaft-Trunnion	33	28-3480	1	Bearing-Needle
9	93-4133	1	Lip Seal	†34	28-3470	1	Lip Seal
10	28-3650	1	Bearing-Ball	‡34	94-2975	1	Shaft Seal
11	3257-5	2	Key-Woodruff	35	324-23	2	Screw-HH
12	28-3640	1	Shaft-Pump	36	28-3450	2	Washer-Flat
13	49-7820	1	Variable Swashplate	37	38-2670	1	Kit-Charge Pump (Incl. Ref. #31-34)
14	32121-91	3	Pin	39	92-5716	1	Center Section
15	25-2380	2	Plate-Thrust	40	92-5717	1	Plug-Pipe
16	48-1800	2	Kit-Cylinder Block	41	28-3440	2	O-Ring
17	46-7320	1	Plate-Pump Valve	42	28-3440	2	Threaded Plug (Incl. Ref. #41)
18	25-3300	2	Bearing-Needle	43	323-10	4	Screw-HH
19	28-3590	2	O-Ring	44	25-2480	1	Relief Valve Spring Charge
20	28-3580	2	Ring-Backup	45	28-3380	1	Plate-Motor Valve
21	28-3570	2	O-Ring				
22	49-7830	2	Asm-Check Valve (Incl. Ref. #19-21)				
23	25-2460	2	Hex Hd. Plug				
24	28-3400	2	O-Ring				
25	25-2470	A/R	Shim Pack				

†Used on transmission serial no. 94-39999 and before.

‡Used on transmission serial no. 94-40000 and up.



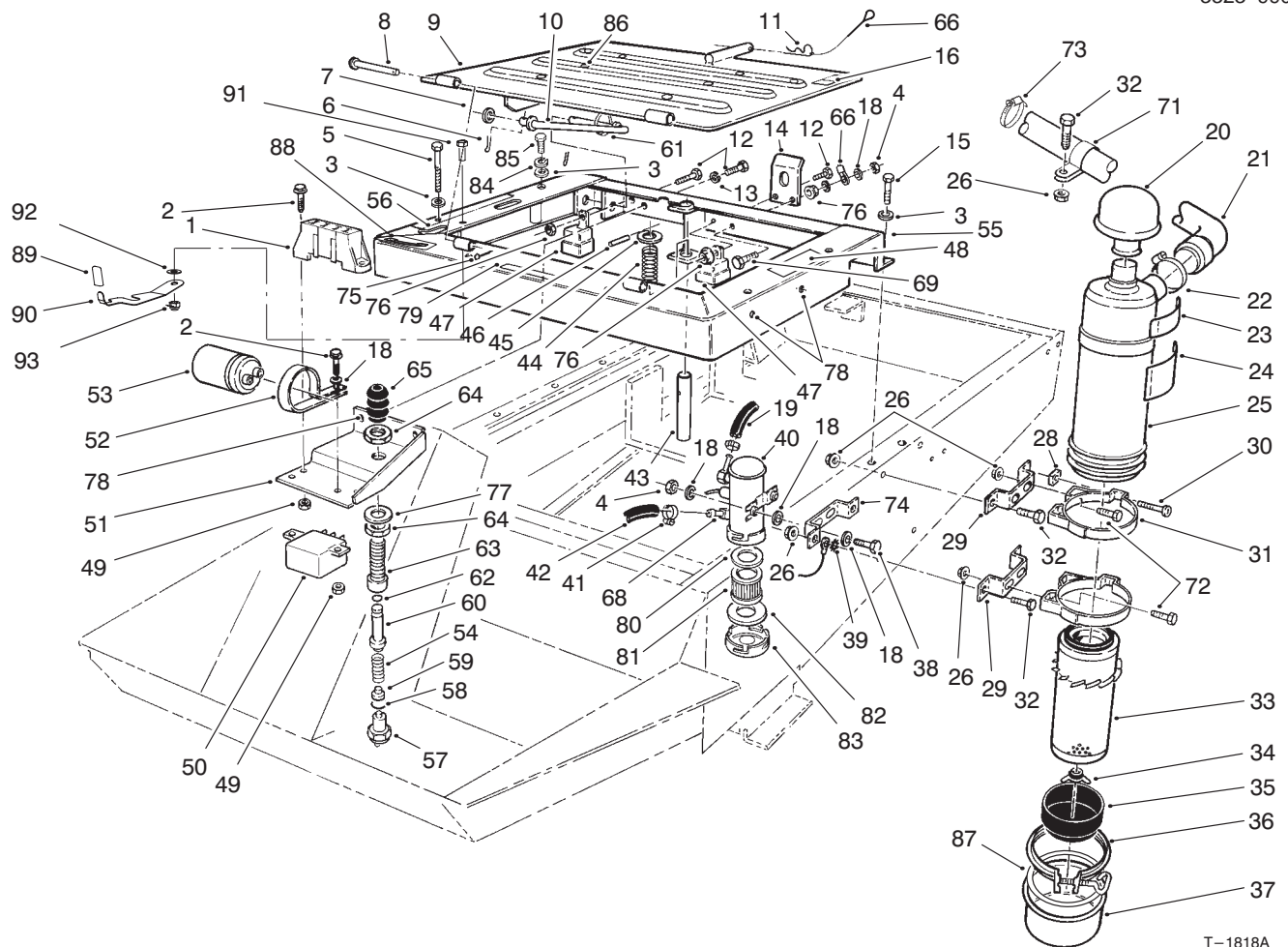
T-2784-3

Drive Shaft Assembly No. 98-5009

Ref. No.	Part No.	Qty.	Description
1	72-3410	2	Yoke-Flange
2	54-9180	2	Kit-Universal Joint
3	72-3420	1	Shaft-Yoke, Slip
4	302-58	1	Fitting-Grease
5	72-3431	1	Tube-Yoke, Slip
6	62-3820	2	Fitting-Grease 65#
†7	3274-64	6	Screw-HSH
†8	3253-3	6	Washer-Lock
*	92-5096	1	Asm-Joint & Shaft (Incl. Ref. #1-3 & 6)
*	98-5009	1	Driveshaft (Complete)

Ref. No.	Part No.	Qty.	Description

*Not Illustrated
 †Order item separately.

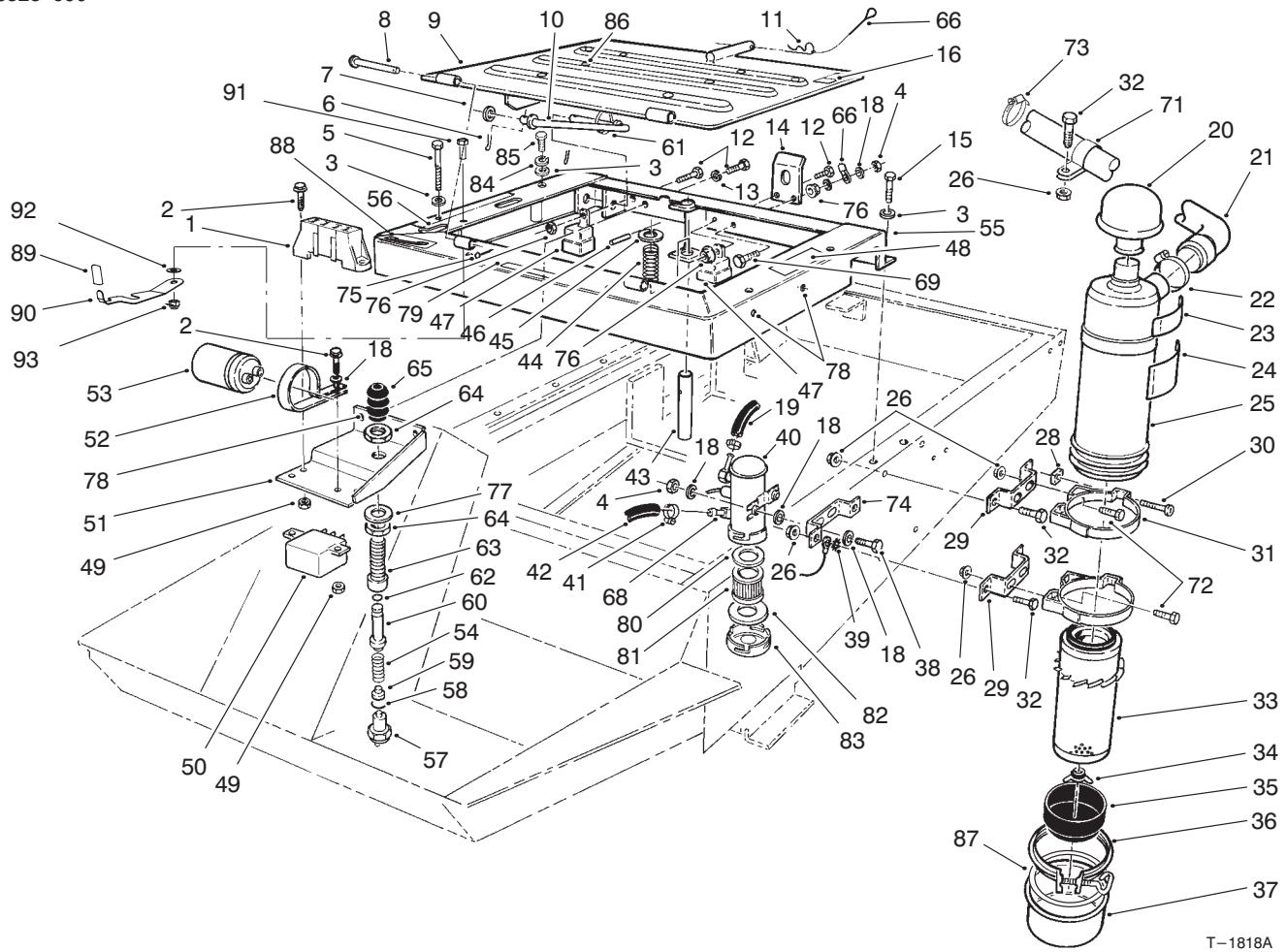


T-1818A

Seat Frame & Air Cleaner Assembly

Ref. No.	Part No.	Qty.	Description
1	67-7160	1	Fuse Block
2	32105-13	4	Screw-HH
3	3256-23	6	Washer-Flat
4	3296-42	3	Nut-Lock
5	322-13	4	Screw-HH
6	3272-11	2	Pin-Cotter
7	3256-24	1	Washer-Flat
8	283-49	2	Pin-Clevis
9	92-5759	1	Plate-Seat (Incl. Ref. #86)
10	66-2800	1	Rod-Seat Support
11	3290-255	1	Pin-Hair, Cotter
12	321-4	4	Screw-HH
13	3253-3	2	Washer-Lock
14	66-2630	1	Latch-Seat
15	3234-17	2	Screw-HFH
16	93-6680	1	Decal-Diesel Fuel
18	3256-22	9	Washer-Flat
19	63-7620	1	Hose
20	27-7180	1	Asm-Cap
21	94-3309	1	Hose-Air Cleaner Inlet
22	2412-42	1	Clamp-Hose
23	93-7275	1	Decal- Starting Fluid
24	27-7160	1	Decal-Instructions
25	27-7100	1	Asm-Air Cleaner (Incl. Ref. #24 &

Ref. No.	Part No.	Qty.	Description
26	32128-20	9	Nut-Flange
28	32107-11	2	Nut-Square
29	66-2451	2	Bracket-Air Cleaner
30	3258-19	2	Screw-HH
31	27-7170	2	Asm-Mounting Band (Incl. Ref. #28 & 30)
32	322-5	5	Screw-HH
33	27-7110	1	Asm-Element
34	27-7120	1	Asm-Nut & Gasket
35	27-7140	1	Skirt-Baffle
36	27-7130	1	Asm-Clamp
37	27-7150	1	Asm-Cup
38	321-8	2	Screw-HH
39	3255-8	1	Washer-Lock, Ext. Tooth
40	53-8150	1	Pump-Fuel
41	2412-108	4	Clamp-Hose
42	63-7630	1	Hose
43	66-2590	1	Pin-Seat Spring
44	37-9590	1	Spring-Compression

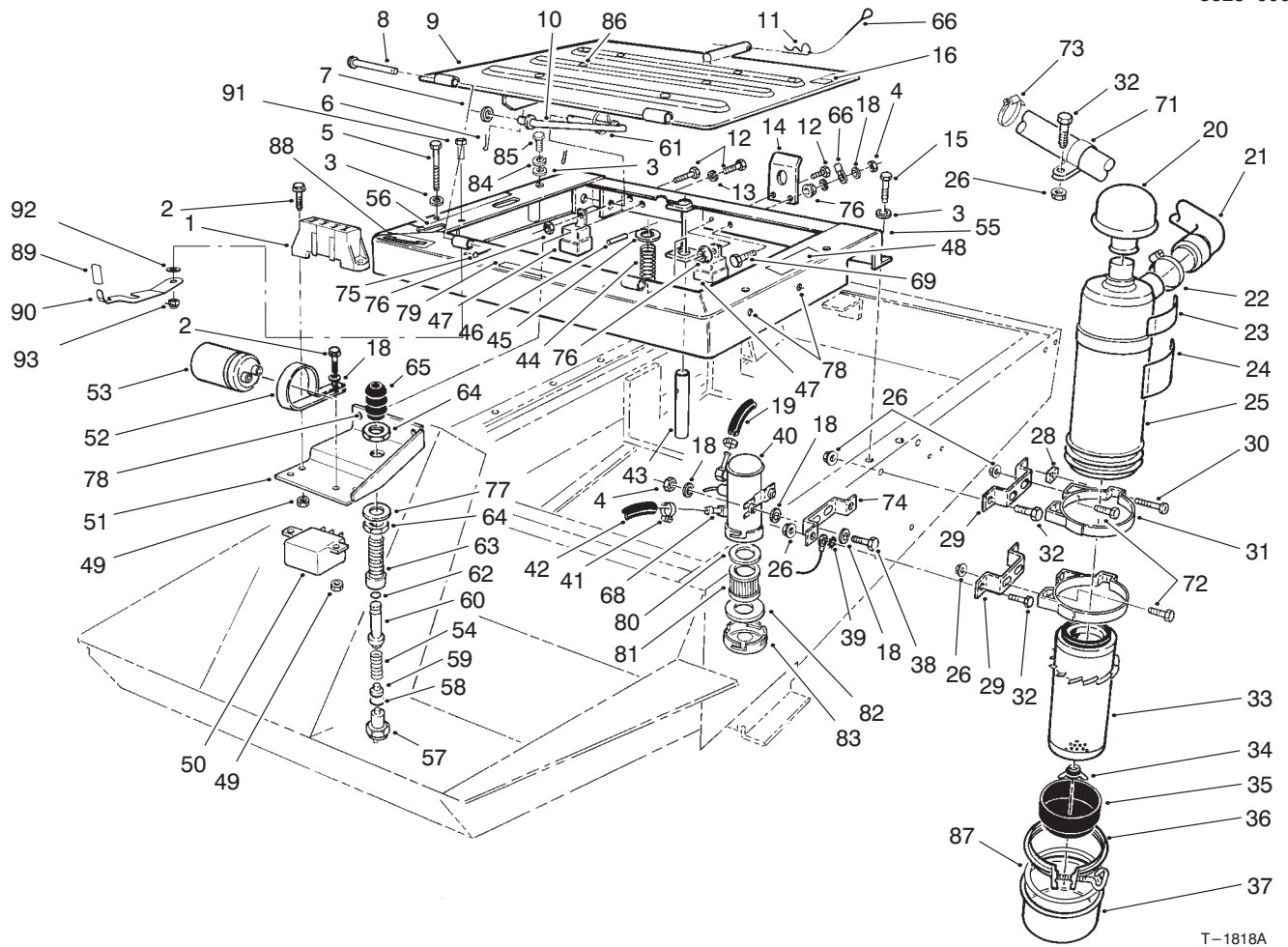


T-1818A

Seat Frame & Air Cleaner Assembly (Continued)

Ref. No.	Part No.	Qty.	Description
45	3256-27	1	Washer-Flat
46	32121-6	1	Pin-Roll
47	63-7590	2	Relay
48	67-1710	1	Decal-Interlock
48	93-7841	1	Decal-Caution (Europe)
49	3296-12	4	Nut-Lock
50	66-8800	1	Relay
51	92-7892	1	Bracket-Switch, Seat
52	2412-74	1	R-Clamp
53	37-2690	1	Capacitor
54	43-8600	1	Spring-Compression
55	92-8877	1	Asm-Seat Frame (Incl. Ref. #48, 56, 78 & 79)
56	93-7833	1	Decal-Control Levers
57	72-4320	1	Switch
58	237-30	1	O-Ring
59	43-8610	1	Guide-Spring & Ball Seat
60	43-8860	1	Plunger-Switch
61	3290-378	1	Tie-Cable
62	237-7	1	O-Ring
63	43-8620	1	Guide-Switch Pin
64	218-461	2	Nut-Jam
65	43-8870	1	Boot-Switch

Ref. No.	Part No.	Qty.	Description
66	28-8070	1	Lanyard
68	67-1690	2	Fitting
69	321-6	1	Screw-HH
71	2412-107	1	R-Clamp
72	322-3	4	Screw-HH
73	2412-92	1	Clamp-Hose
74	66-2450	1	Bracket-Air Cleaner
75	3272-4	2	Pin-Cotter
76	32128-33	3	Nut-Hex. Flange
77	3256-69	1	Washer-Flat
78	32148-6	6	Nut-Clinch
79	92-5773	1	Decal-Starting Instructions
79	93-7801	1	Decal-Starting Instructions (Europe)
80	43-2570	1	Gasket
81	43-2550	1	Filter
82	43-2560	1	Gasket
83	43-2580	1	Magnet
84	3253-4	2	Washer-Lock
85	322-14	2	Screw-HH
86	32148-9	2	Nut-Clinch

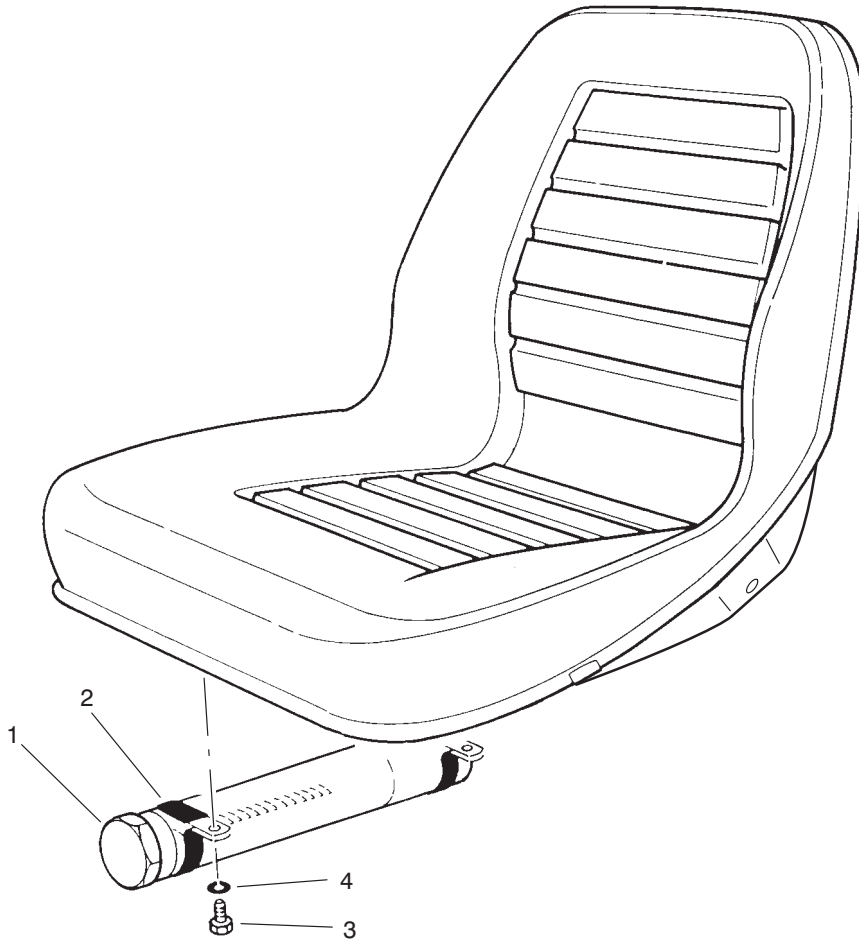


T-1818A

Seat Frame & Air Cleaner Assembly (Continued)

Ref. No.	Part No.	Qty.	Description	Ref. No.	Part No.	Qty.	Description
87	80-3330	1	Gasket				
88	100-6577	1	Decal				
89	100-6576	1	Grip Handle				
90	100-6551	1	Latch-Spring				
91	322-4	1	Screw				
92	3256-2	1	Washer				
93	3296-29	1	Nut				
*	43-9071	1	Switch-Seat (Incl. Ref. #54, 57-60 & 62-65)				
*	95-3074	1	Kit-400 Hour Filter (Incl. Ref. #33 & 81)				

*Not Illustrated

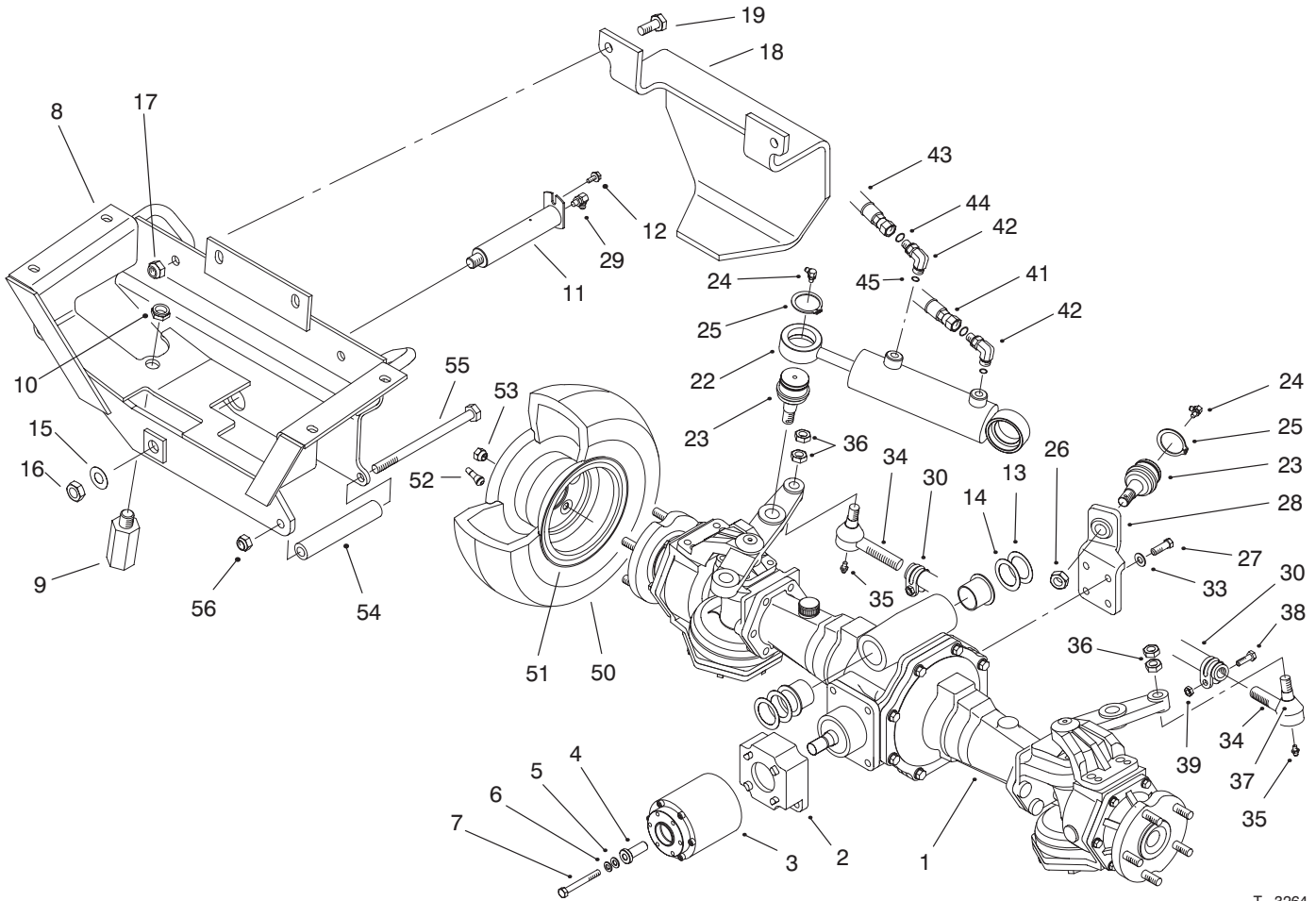


T-1692

Manual Storage Assembly

Ref. No.	Part No.	Qty.	Description
1	74-0720	1	Tube-Manual
2	2412-133	2	R-Clamp
3	322-5	2	Screw-HH
4	3256-23	2	Washer-Flat

Ref. No.	Part No.	Qty.	Description
----------	----------	------	-------------

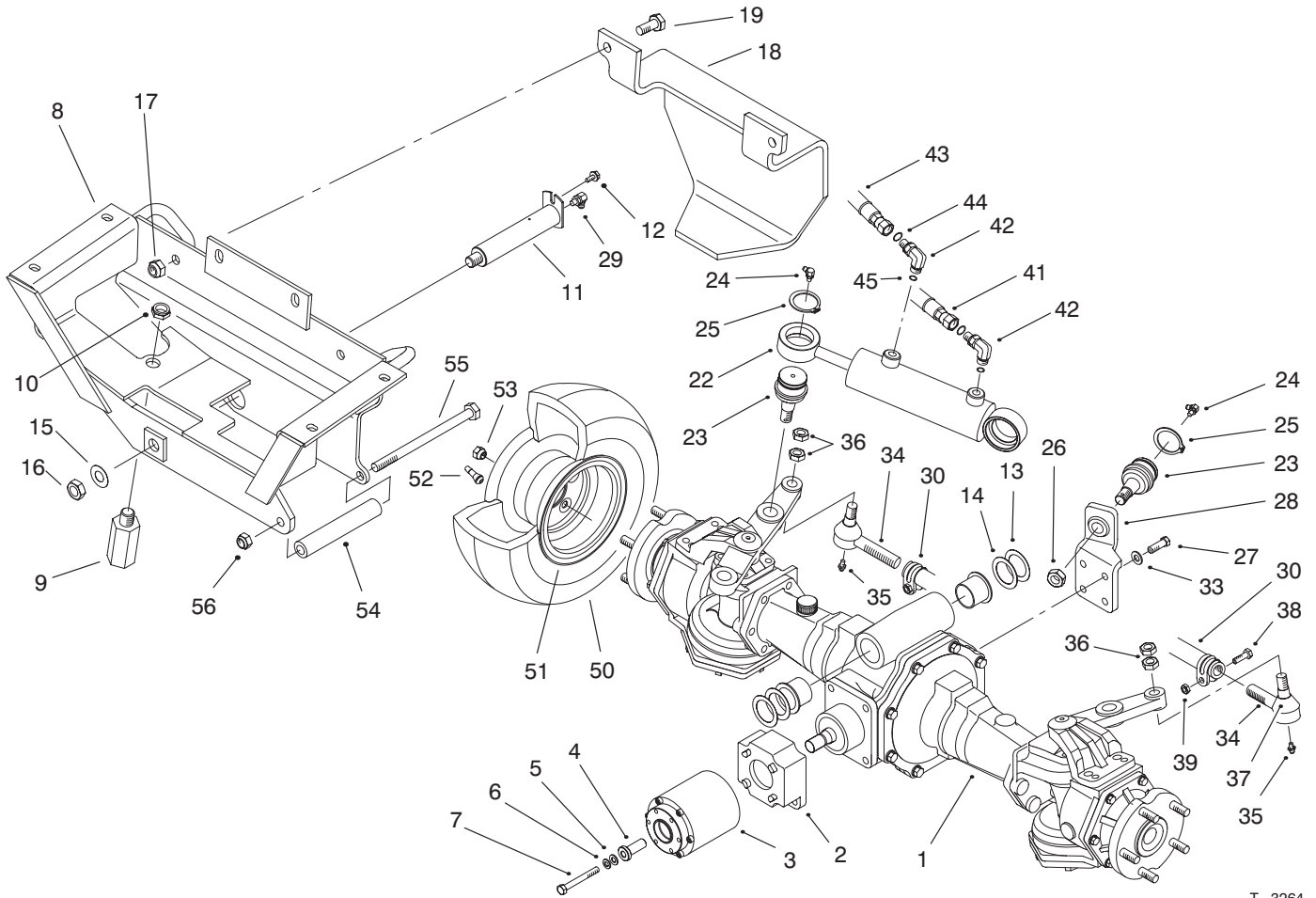


T-3264

Rear Axle Assembly

Ref. No.	Part No.	Qty.	Description
1	95-7501	1	Asm-Drive Axle
2	98-3860	1	Adapter-Clutch
3	95-6296	1	Clutch-Bidirectional
4	99-8436	1	Spacer
5	33094-00	1	Washer-Flat
6	3253-4	1	Washer-Lock
7	33114-070	1	Screw-HH
8	99-2403	1	Axle Support
9	98-3863	1	Stop-Oscillation
10	3296-15	1	Nut-Hex.
11	99-8434	1	Rear Axle Pin
12	32144-14	1	Screw-HWH
13	99-8431	A/R	Washer-Thrust (Thin)
14	99-8432	A/R	Washer-Thrust (Thick)
15	71-4540	1	Washer-Thrust
16	32146-20	1	Nut-Lock Jam
17	3296-25	2	Nut-Lock
18	99-2405	1	Bumper
19	325-5	2	Screw-HH
20	3256-25	2	Washer-Flat
22	99-2415	1	Cylinder-Hydraulic
23	92-5838	2	Ball Joint
24	302-11	2	Fitting-Grease 45°
25	32151-104	2	Ring-Retaining
26	3220-6	4	Nut-Jam
27	95-8812	4	Screw-HH

Ref. No.	Part No.	Qty.	Description
28	98-3862	1	Bracket-Cylinder Support
29	302-33	1	Fitting-Lube
30	99-2412	1	Asm-Tube & Clamp
33	48-9220	4	Washer
34	71-4740	2	Tie Rod End
35	302-55	2	Fitting-Lube
36	3220-11	4	Nut-Jam
37	71-4760	2	Seal
38	323-9	2	Screw-HH
39	3296-39	2	Nut-Hex. Lock
41	92-5081	1	Hose-Hydraulic
42	340-97	2	Fitting-Hydraulic 90# (Incl. Ref. #44 & 45)
43	92-5080	1	Hose-Hydraulic
44	237-22	2	O-Ring
45	237-78	2	O-Ring
48	322-5	1	Screw-HH
49	56-7985	1	Sleeve
50	231-122	2	Tire
51	99-2410	2	Rim
52	232-31	2	Stem-Valve
53	93-5268	10	Nut-Lug
54	99-2404	1	Stop-Rear Axle, LH
55	325-36	1	Screw-HH



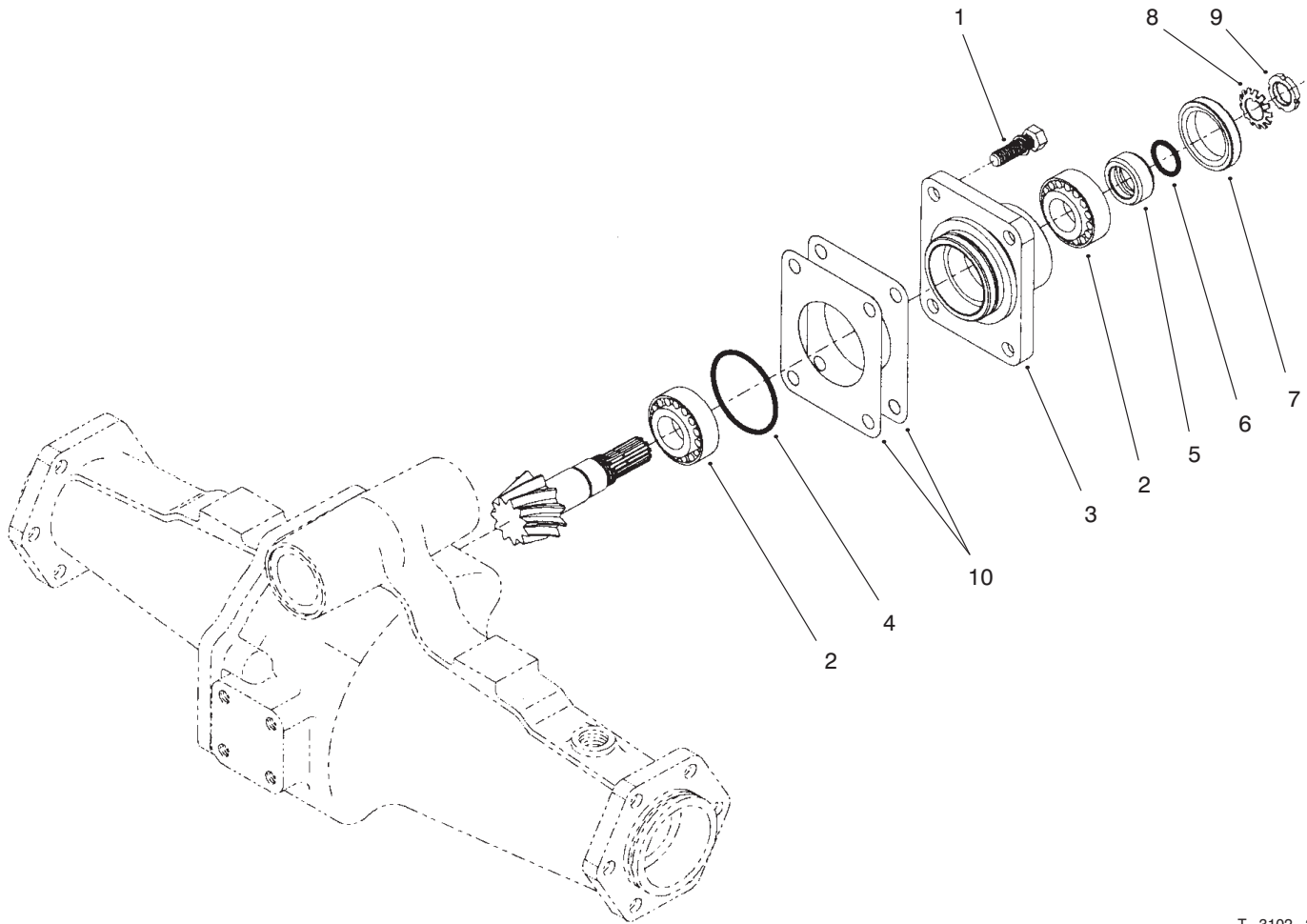
T-3264

Rear Axle Assembly (Continued)

Ref. No.	Part No.	Qty.	Description
56	3296-23	1	Nut-Lock
*	98-3871	1	Asm-Tie Rod (Incl. Ref. #30 & 34-39)

Ref. No.	Part No.	Qty.	Description

*Not Illustrated



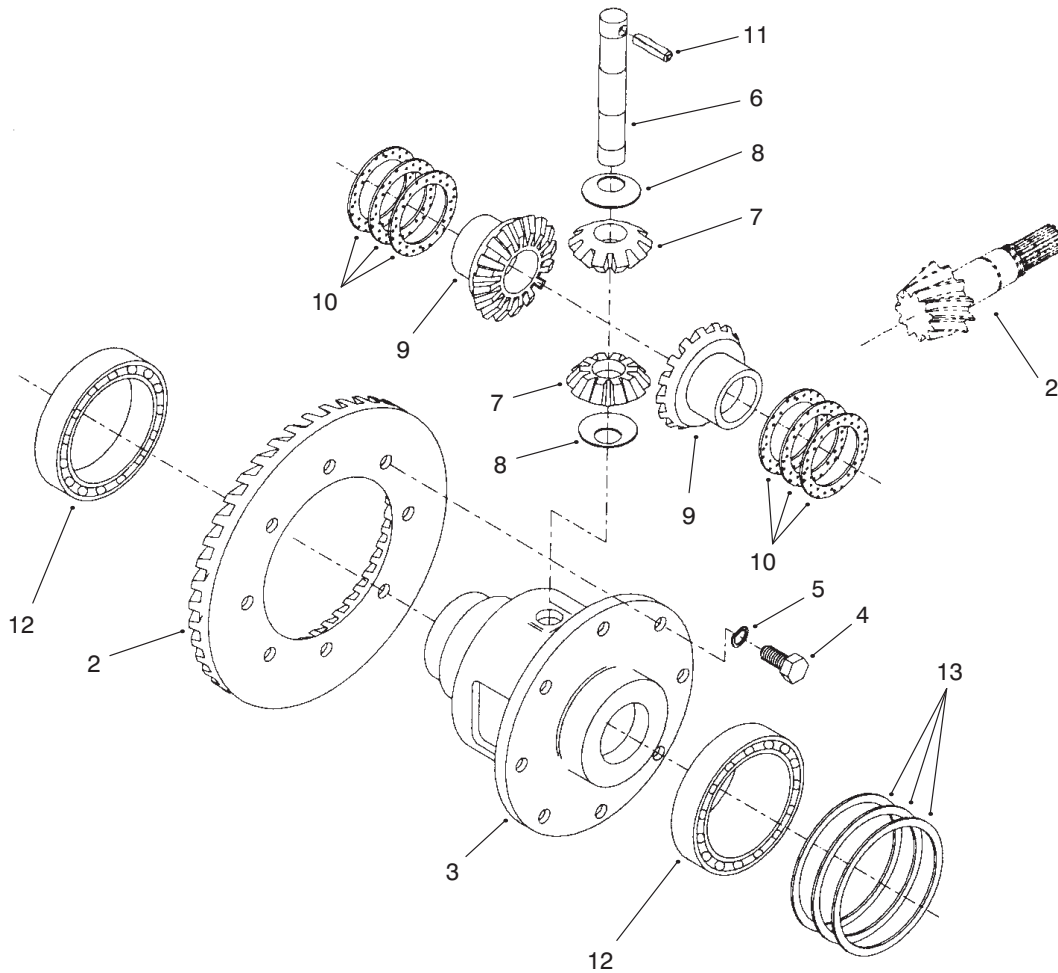
T-3102-2

Rear Axle Assembly No. 95-7501 Bevel Pinion Shaft Assembly

Ref. No.	Part No.	Qty.	Description
1	99-7575	4	Bolt
2	99-7570	2	Bearing-Taper Roller
3	95-7535	1	Case-Bearing
4	99-7571	1	O-Ring
5	99-7572	1	Collar-Oil Seal
6	99-7573	1	O-Ring
7	99-7574	1	Seal-Oil
8	99-7559	1	Washer-Lock
9	99-7560	1	Nut-Lock
10	99-7550	2	Shim-0.1
*	99-7551	2	Shim-0.2

Ref. No.	Part No.	Qty.	Description

*Not Illustrated

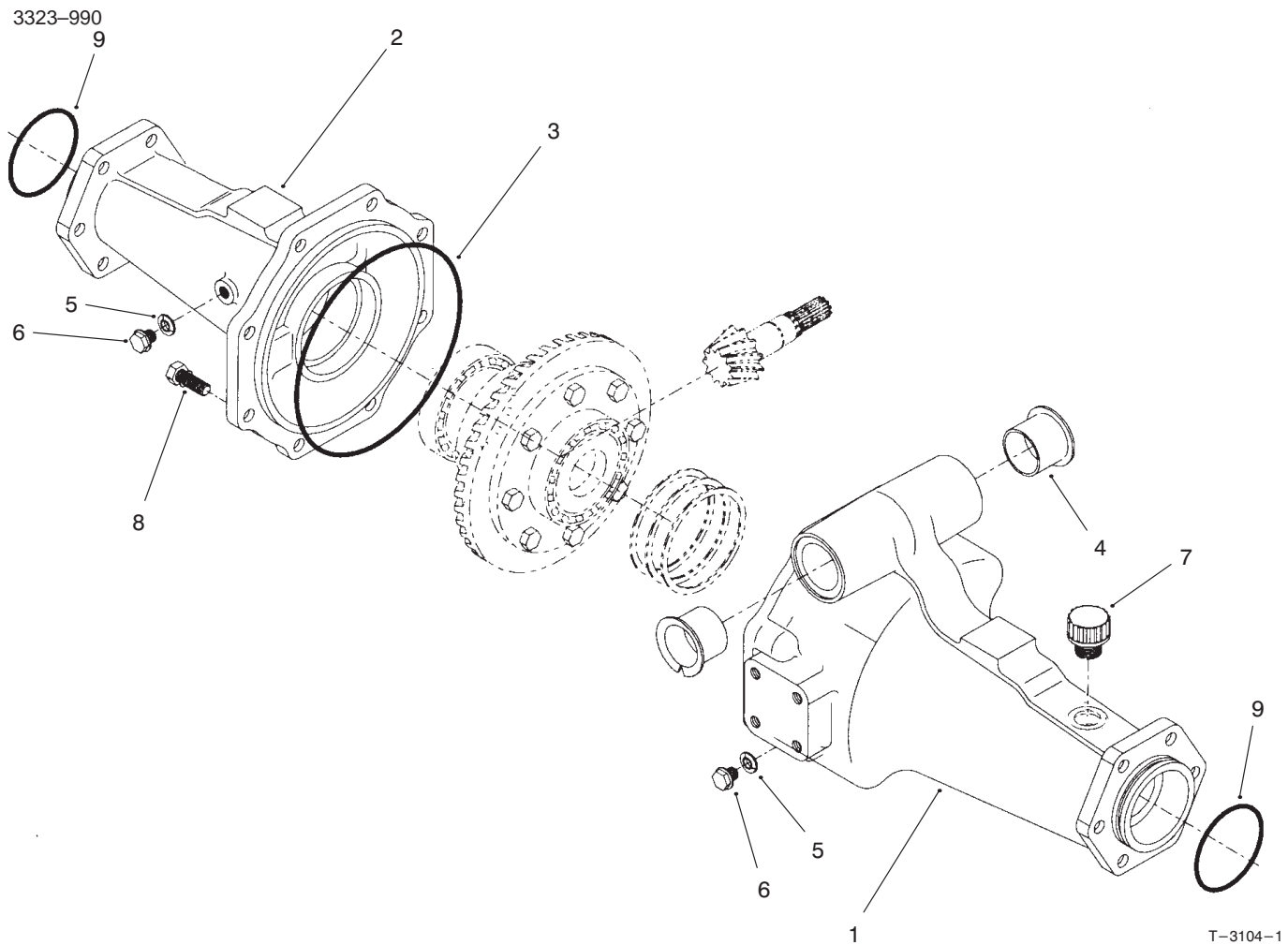


T-3103-2

Rear Axle Assembly No. 95-7501 (Continued) Differential Assembly

Ref. No.	Part No.	Qty.	Description	Ref. No.	Part No.	Qty.	Description
1	95-7503	1	Asm-Differential (Incl. Ref. #2-11)				
2	100-2555	1	Ring & Pinion Set				
3	95-7502	1	Case-Differential				
4	99-7576	8	Bolt				
5	99-7577	8	Washer-Spring				
6	99-7578	1	Shaft-Differential Pinion				
7	99-7579	2	Pinion-Differential				
8	99-7580	2	Washer-Differential Pinion				
9	99-7581	2	Gear-Differential, Side				
10	99-7582	2	Washer-Differential				
*	99-7583	2	Washer-Differential				
*	99-7584	2	Washer-Differential				
11	99-7588	1	Pin-Spring				
12	99-7562	2	Bearing-Ball				
13	99-7585	2	Shim-0.1				
*	99-7586	2	Shim-0.2				
*	99-7587	2	Shim-0.4				

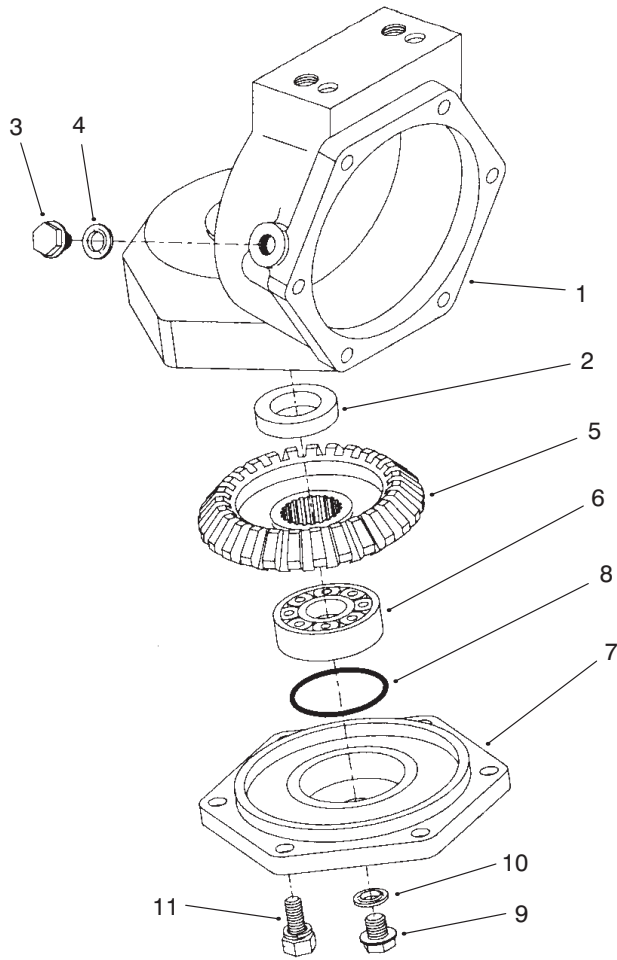
*Not Illustrated



Rear Axle Assembly No. 95-7501 (Continued) Axle Support Assembly

Ref. No.	Part No.	Qty.	Description
1	95-7508	1	Support #1-Axle
2	95-7506	1	Support #2-Axle
3	95-7507	1	O-Ring
4	95-7537	2	Bushing-Flange
5	99-7589	2	Plug
6	99-7590	2	Washer-Seal
7	99-7591	1	Asm-Oil Plug
8	99-7592	8	Bolt
9	99-7593	2	O-Ring

Ref. No.	Part No.	Qty.	Description

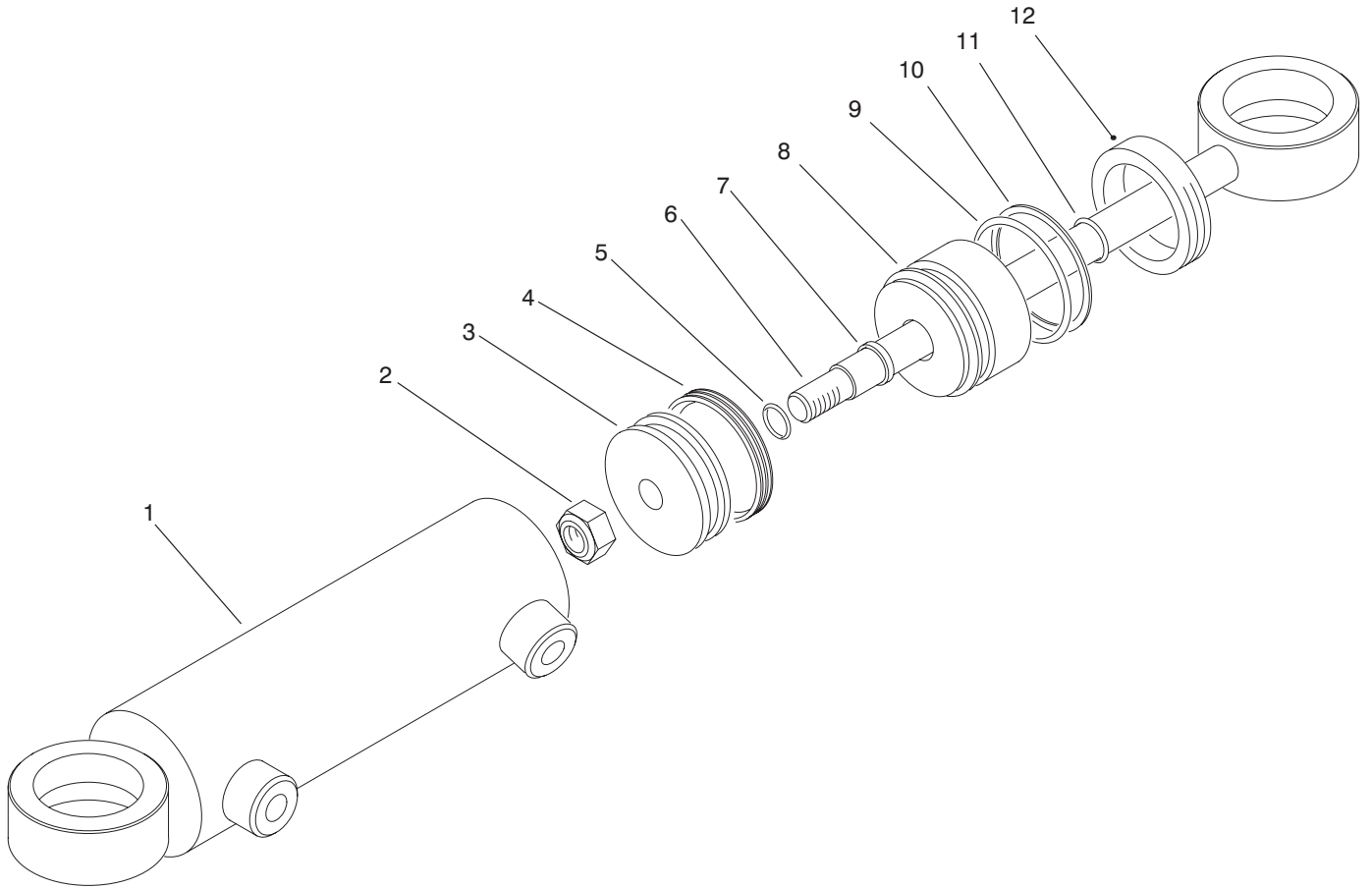


T-3107-1

Rear Axle Assembly No. 95-7501 (Continued) Axle Case Assembly

Ref. No.	Part No.	Qty.	Description
1	95-7532	2	Case-Axle
2	99-7594	2	Seal-Oil
3	99-7535	2	Plug
4	99-7536	2	Washer-Seal
5	95-7528	2	Gear-27 Bevel
6	99-7532	2	Bearing-Taper Roller
7	95-7526	2	Cover-Axle
8	99-7537	2	O-Ring
9	99-7589	2	Plug
10	99-7590	2	Washer-Seal
11	99-7596	12	Bolt

Ref. No.	Part No.	Qty.	Description



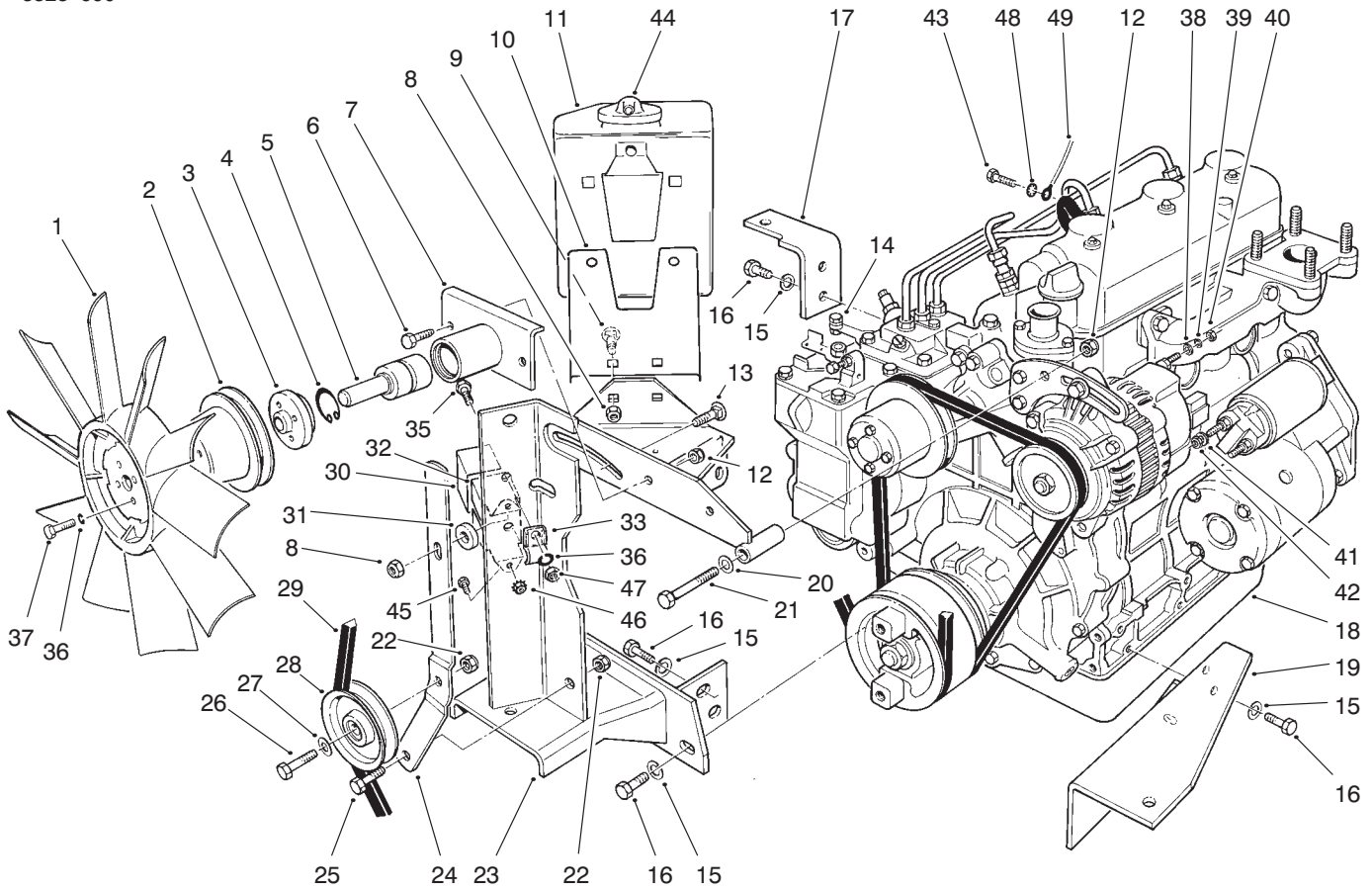
T-3111-1

Steering Cylinder No. 99-2415

Ref. No.	Part No.	Qty.	Description
†1		1	Asm-Barrel
2	32152-10	1	Nut-Lock
†3		1	Piston
†4		1	Uniring
†5		1	O-Ring
†6		1	Rod
†7		1	Seal-Rod
†8		1	Head
†9		1	O-Ring
†10		1	Seal-Backup
†11		1	Seal-Dust
†12		1	Collar-Internal
*	86-5390	1	Kit-Seal Repair (Incl. Ref. #4, 5, 7 & 9-11)

Ref. No.	Part No.	Qty.	Description

*Not Illustrated
†Not Serviced Separately

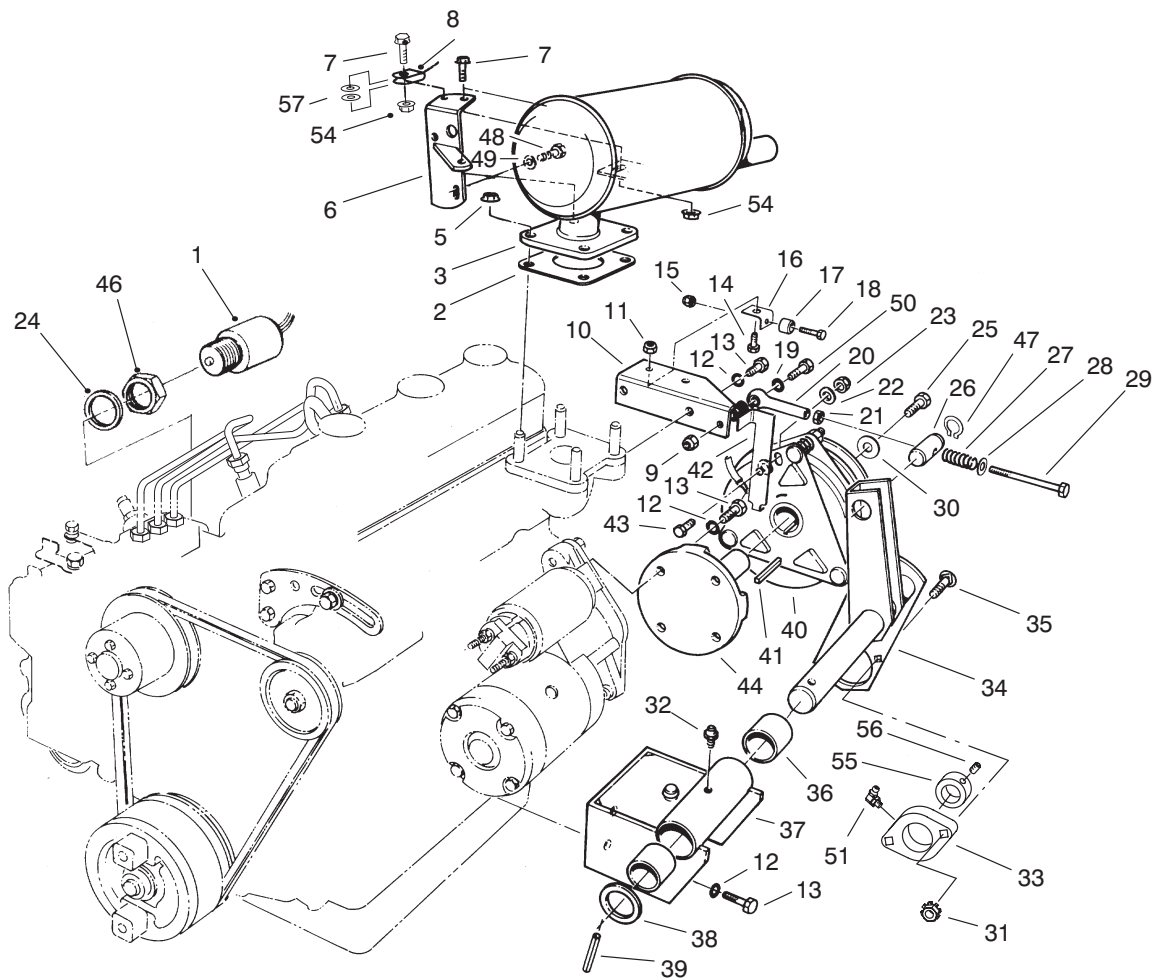


T-0542B

Engine Assembly

Ref. No.	Part No.	Qty.	Description
1	84-1880	1	Fan-Cooling
2	84-1890	1	Pulley-Fan
3	84-1930	1	Hub-Fan
4	32120-10	1	Ring-Retaining
5	36-7290	1	Shaft & Bearing
6	322-4	2	Screw
7	84-1940	1	Hub
8	32128-20	3	Nut-Flange
9	3230-23	2	Bolt-CARR
10	66-2440	1	Plate-Reservoir
11	63-7380	1	Asm-Expansion Tank (Incl. Ref. #44)
12	3296-29	3	Nut-Lock
13	3230-2	1	Bolt-CARR
14	63-6760	1	Swivel-Throttle Cable
15	48-9590	8	Washer-Lock
16	63-7790	8	Screw
17	71-2910	1	Angle-Engine Mount
18	98-7220	1	Engine
19	66-2320	1	Mount-Engine
20	3256-23	1	Washer-Flat
21	322-11	1	Screw-HH
22	3296-39	2	Nut-Lock
23	98-2334	1	Bracket
24	63-6720	1	Lever-Idler
25	323-6	1	Screw-HH

Ref. No.	Part No.	Qty.	Description
26	323-8	1	Screw-HH
27	3256-24	1	Washer-Flat
28	63-8140	1	Pulley
29	92-8876	1	Belt-Fan
30	70-8560	1	Retainer-Glow Plug
31	5-0652	1	Spacer
32	66-8700	1	Indicator-Glow (Incl. Ref. #30)
33	3-6657	1	Clip-Skid
35	321-4	1	Screw-HH
36	3253-3	5	Washer-Lock
37	321-3	4	Screw-HH
38	5-3637	1	Washer-Flat
39	43-5920	1	Washer-Lock
40	43-5970	1	Nut-Hex.
41	42-9850	2	Washer-Lock
42	57-6390	2	Nut-Hex.
43	48-7700	1	Screw-Hex.
44	71-1520	1	Cap-Reservoir
45	32105-8	2	Screw
46	32149-7	2	Nut-Keps
47	3217-5	1	Nut-Hex.
48	3254-2	1	Washer-Lock, Int. Tooth
49	63-7340	1	Wire-Ground

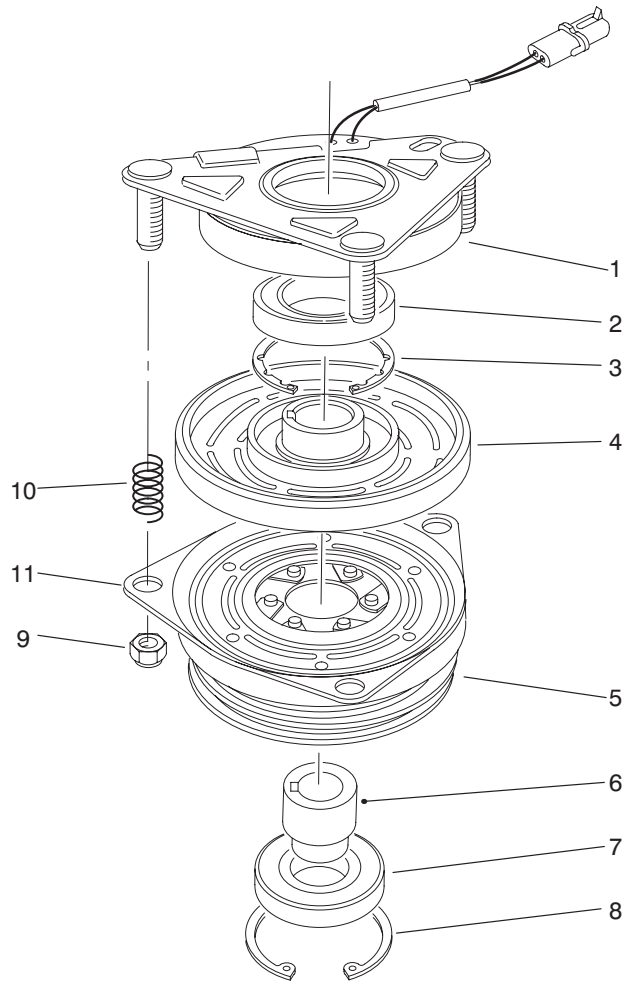


T-0543-4

Power Take Off Assembly

Ref. No.	Part No.	Qty.	Description	Ref. No.	Part No.	Qty.	Description
1	63-7440	1	Solenoid-Stop	26	63-6290	1	Pin-Tension
2	53-8130	1	Gasket-Exhaust	27	3-6624	1	Spring
3	84-1910	1	Muffler	28	4-2390	1	Washer
*	75-6880	1	Spark Arrester Screen (Optional)	29	66-3100	1	Screw
5	68-9400	4	Nut-Hex.	30	67-1631	1	Spacer
6	66-2360	2	Support -Muffler	31	32149-1	2	Nut-Keps
7	3234-29	2	Screw-HFH	32	302-5	1	Fitting-Grease
8	66-2870	1	Cable-Hood Stop	33	92-8799	1	Bearing
9	3296-29	1	Nut-Lock	34	63-6250	1	Shaft-PTO Tension
10	93-9991	1	Bracket	35	3230-4	2	Bolt-CARR
11	3296-42	2	Nut-Lock	36	256-299	2	Bushing
12	48-9590	10	Washer-Lock	37	67-1800	1	Asm-Pivot Plate (Incl. Ref. #32 & 36)
13	63-7790	10	Screw	38	3-4324	1	Washer
14	321-3	2	Screw-HH	39	32121-32	1	Pin-Roll
15	3296-9	2	Nut-Lock	40	63-6050	1	Clutch-Electric
16	63-8230	2	Angle-Clutch Anchor	41	63-8150	1	Key
17	66-2910	2	Bumper-Rubber	42	63-6690	1	Lever-Clutch Anchor
18	3250-39	2	Screw-Pan Head	43	323-34	1	Screw-HH
19	3256-23	4	Washer-Flat	44	63-6030	1	Hub-Clutch
20	66-2900	1	Tie Rod End	46	43-2750	1	Nut-Jam
21	3220-2	1	Nut-Jam	47	32151-83	2	Snap Ring
22	3256-24	2	Washer-Flat	48	66-3160	1	Screw
23	3296-59	1	Nut-Lock	49	48-8030	1	Washer-Flat
24	43-2740	1	Gasket				
25	3212-5	1	Screw				

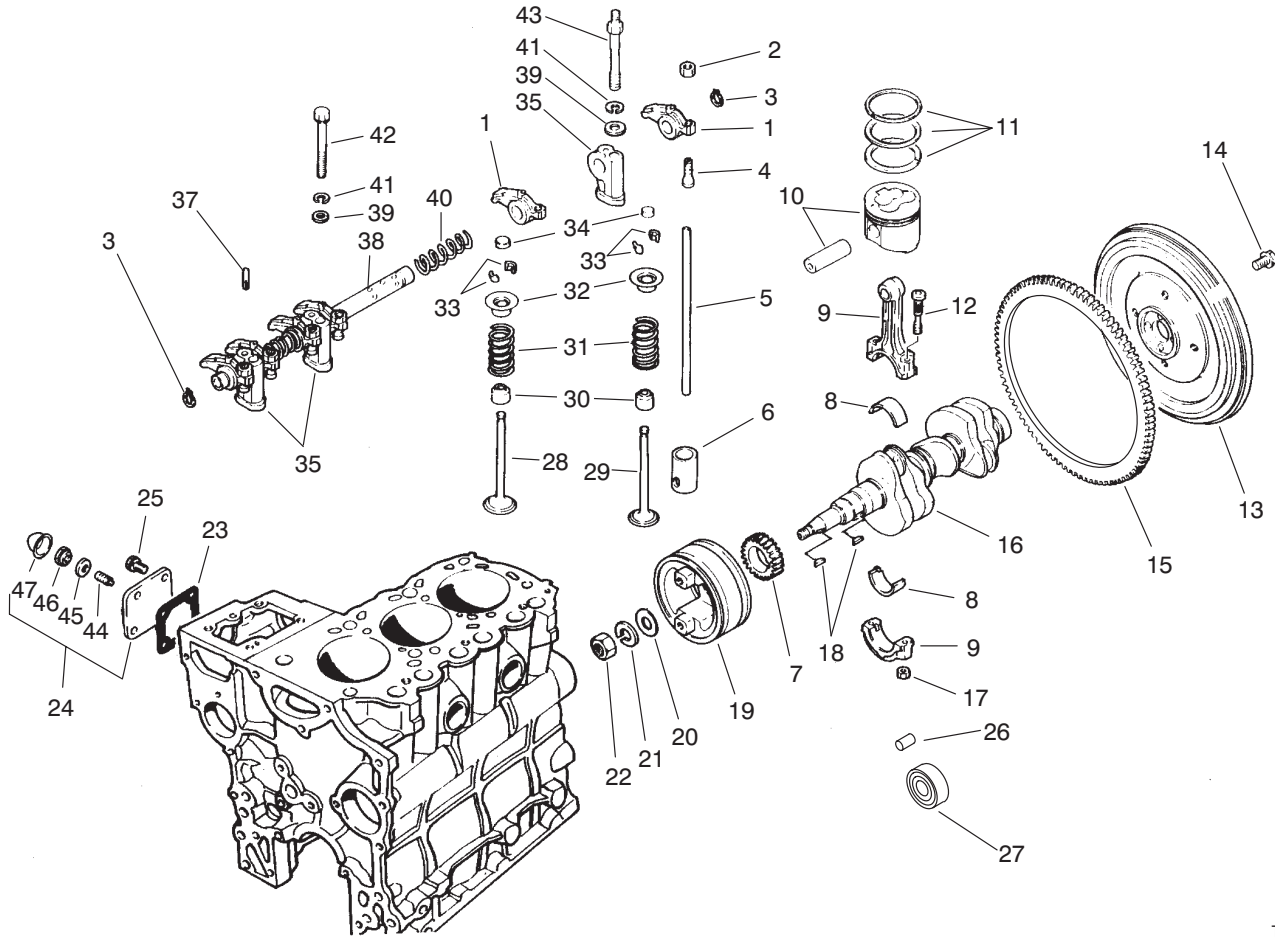
*Not Illustrated



T-0544-2

Clutch Assembly No. 63-6050

Ref. No.	Part No.	Qty.	Description	Ref. No.	Part No.	Qty.	Description
1	67-7050	1	Asm-Field Rotor (Incl. Ref. #2-4)				
2		1	Bearing-Field				
3		1	Ring-Retaining				
4		1	Asm-Field Coil				
5	67-7070	1	Asm-Armature & Pulley (Incl. Ref. #6-8)				
6	67-7080	1	Collar-Bearing				
7	67-7090	1	Bearing-Pulley				
8	67-7060	1	Ring-Retaining				
9	3296-6	3	Nut-Lock				
10	44-8320	3	Spring				
11	67-7100	1	Plate-Brake				



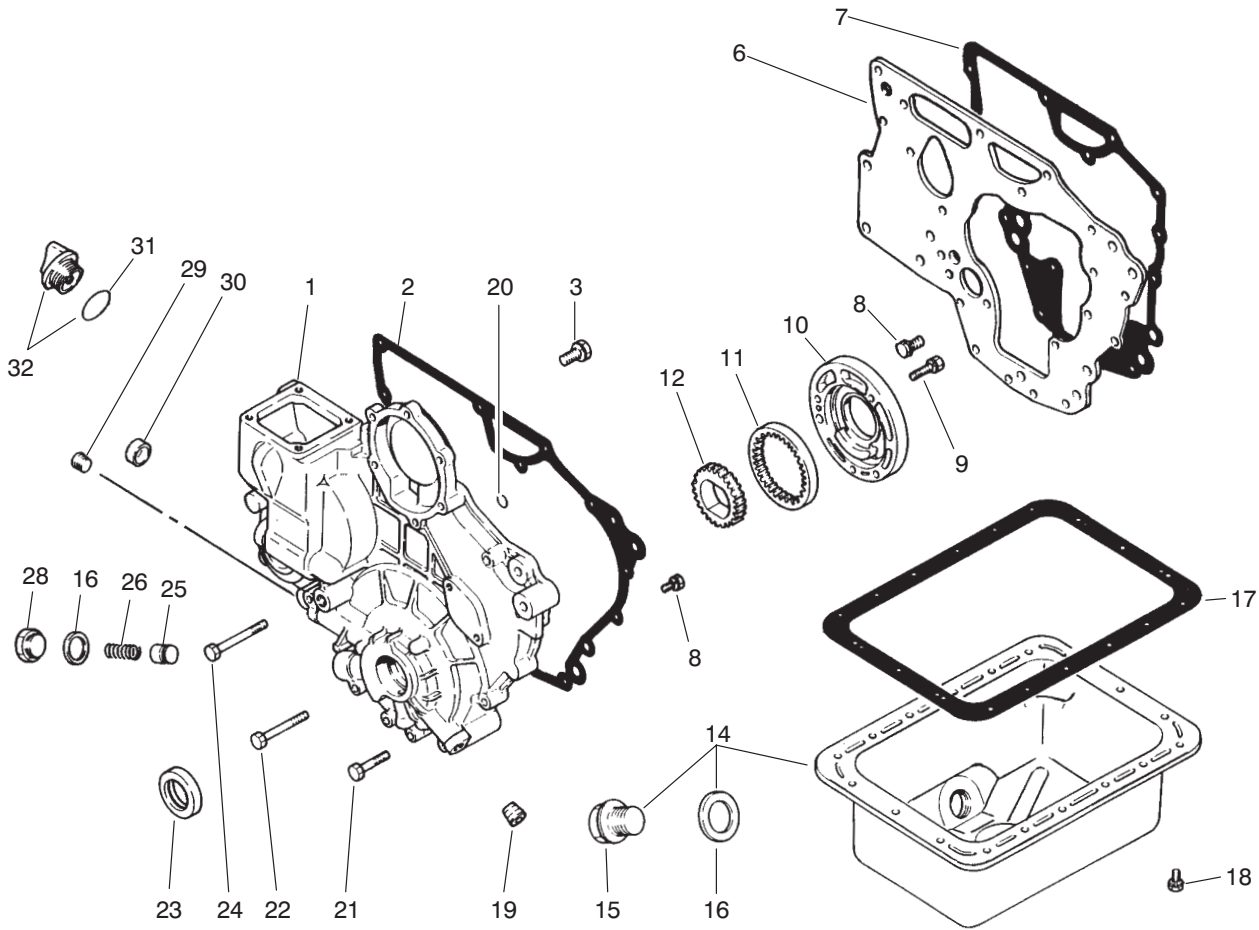
T-0565

Valves & Crankshaft Assembly

Ref. No.	Part No.	Qty.	Description
1	67-3160	6	Arm-Rocker
2	67-3230	6	Nut-Jam
3	67-3240	2	Snap Ring
4	67-3210	6	Screw-Adjusting
5	67-3150	6	Rod-Push
6	67-3120	6	Tappet
7	67-2910	1	Gear
8	75-5010	3	Bearing Set STD
*	67-2890	3	Bearing Set 0.25 mm US
*	67-2900	3	Bearing Set 0.50 mm US
9	67-2850	3	Asm-Connecting Rod (Incl. Ref. #12 & 17)
10	75-5080	3	Piston & Pin Set STD
*	75-5090	3	Piston & Pin Set 0.25 mm OS
*	75-5100	3	Piston & Pin Set 0.50 mm OS
11	75-5050	3	Ring Set STD
*	75-5060	3	Ring Set 0.25 mm OS
*	75-5070	3	Ring Set 0.50 mm OS
12	67-2860	6	Bolt
13	67-2970	1	Asm-Flywheel (Incl. Ref. #14)
14	67-2990	4	Bolt

Ref. No.	Part No.	Qty.	Description
15	67-2980	1	Gear-Ring
16	92-0845	1	Crankshaft
17	42-9590	6	Nut
18	56-0480	2	Key-Woodruff
19	67-2930	1	Pulley-Crankshaft
20	67-2950	1	Washer
21	67-2960	1	Washer-Lock
22	67-2940	1	Nut-Jam
23	67-4310	1	Gasket
24	75-5110	1	Asm-Cove (Incl. Ref. #44-47)
25	42-9440	4	Bolt W/Washer
28	67-3130	3	Valve-Intake
29	67-3140	3	Valve-Exhaust
30	42-7870	6	Seal
31	67-3110	6	Spring
32	67-3100	6	Retainer
33	42-7860	12	Lock
34	67-3180	6	Cap
35	67-3200	3	Stay-Rocker
37	67-3220	1	Pin
38	67-3190	1	Asm-Rocker Shaft
39	42-9660	3	Washer
40	67-3170	2	Spring

*Not Illustrated



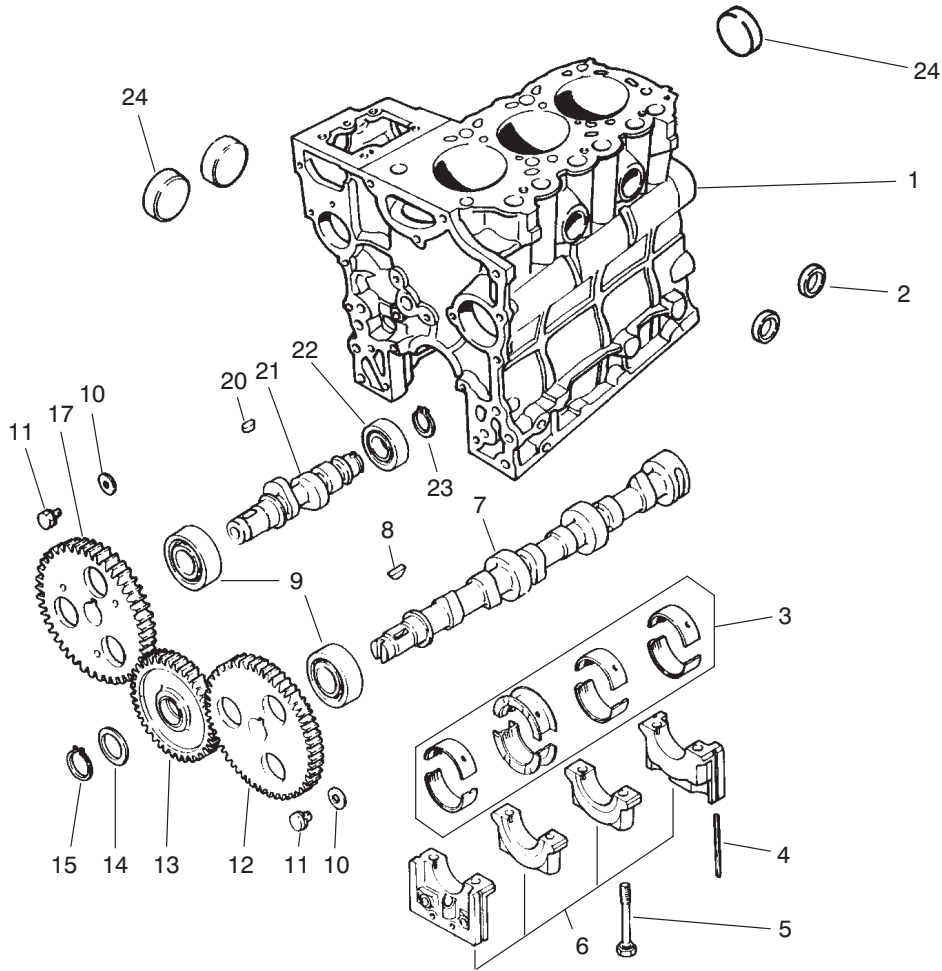
T-0567

Crankcase Assembly

Ref. No.	Part No.	Qty.	Description
1	94-1259	1	Case
2	67-2580	1	Gasket-Case
3	67-2340	3	Bolt W/Washer
6	67-2310	1	Plate-Front
7	67-2320	1	Gasket-Plate
8	42-9440	11	Bolt W/Washer
9	67-2560	3	Bolt W/Washer
10	67-2550	1	Housing-Oil Pump
11	67-2540	1	Gear-Outer
12	67-2530	1	Gear-Inner
14	75-4910	1	Asm-Oil Pan (Incl. Ref. #15-16)
15	42-9260	1	Plug-Drain
16	42-7290	2	Gasket-Drain
17	67-2480	1	Gasket-Oil Pan
18	42-9490	18	Bolt W/Washer
19	42-7210	1	Plug-Taper
20	67-2630	2	O-Ring
21	67-2600	3	Bolt
22	67-2610	4	Bolt
23	67-2590	1	Seal-Oil
24	67-2620	1	Bolt
25	67-2500	1	Plunger-Relief
26	67-2510	1	Spring-Relief
28	67-2520	1	Plug
29	67-2570	1	Plug-Taper

Ref. No.	Part No.	Qty.	Description
30	67-2640	1	Cap
31	67-2660	1	O-Ring
32	67-2650	1	Asm-Oil Fill Cap (Incl. Ref. #31)
*	75-5040	1	Kit-Gasket, Engine

*Not Illustrated



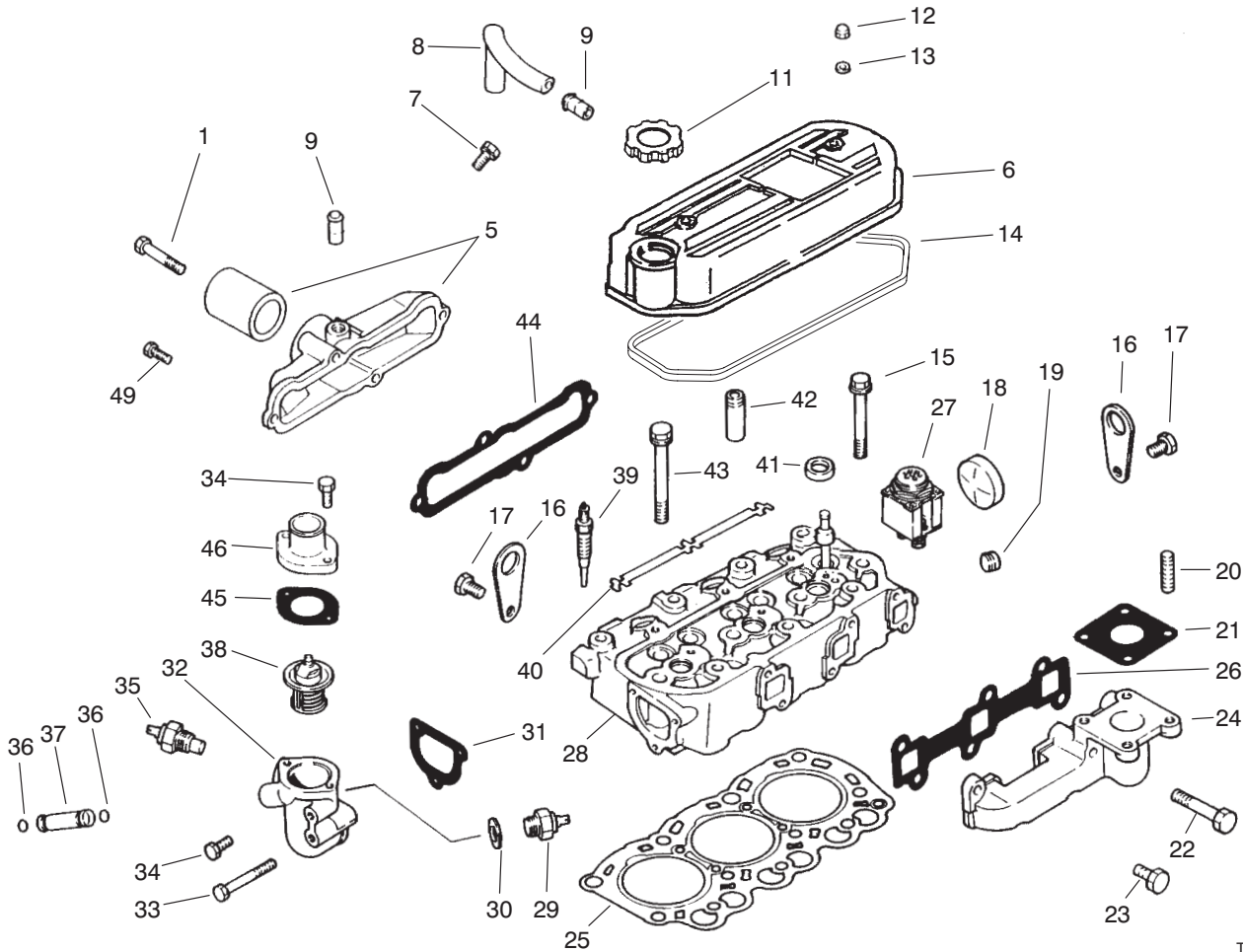
T-0564

Camshaft Assembly

Ref. No.	Part No.	Qty.	Description
1	94-1257	1	Asm-Block (Incl. Ref. #2, 5, 6 & 24)
2	42-7080	2	Cap
3	75-4900	1	Bearing Set STD
*	67-2410	1	Bearing Set 0.25 mm US
*	67-2420	1	Bearing Set 0.50 mm US
4	67-2200	4	Seal
5	67-2250	8	Bolt
6		1	Asm-Cap
7	67-3010	1	Cam Shaft
8	56-0480	1	Key-Woodruff
9	67-3030	2	Bearing
10	67-3000	2	Washer
11	42-9490	2	Bolt W/Washer
12	67-3020	1	Gear
13	67-3090	1	Asm-Gear
14	67-3040	1	Plate
15	56-1060	1	Snap Ring
17	67-3070	1	Gear
20	42-7840	1	Key
21	67-3060	1	Shaft
22	67-3050	1	Bearing
23	67-3080	1	Snap Ring

Ref. No.	Part No.	Qty.	Description
24	56-0020	3	Plug

*Not Illustrated

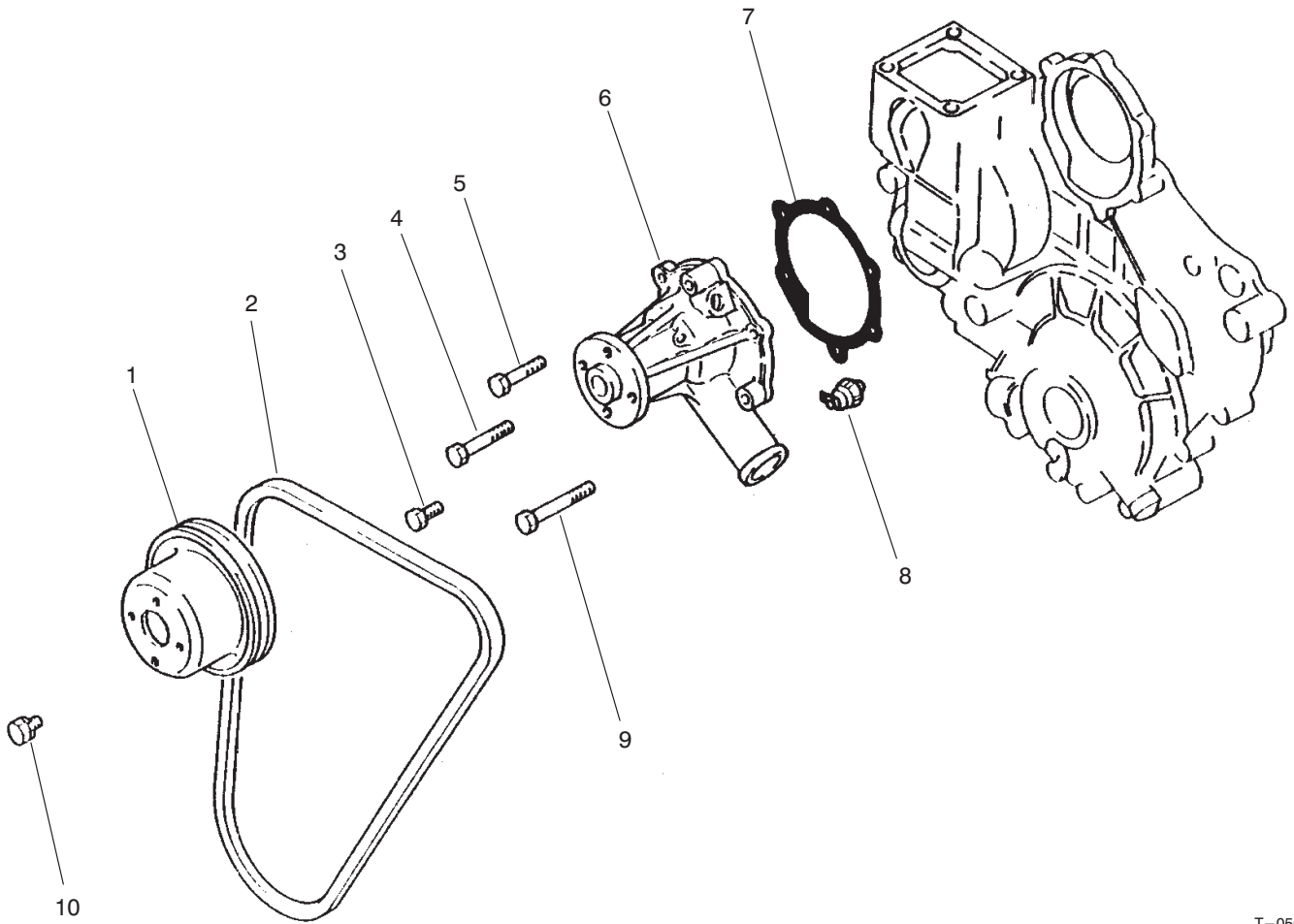


T-0566D

Cylinder Head Assembly

Ref. No.	Part No.	Qty.	Description
1	67-4400	2	Bolt
5	94-3533	1	Asm-Cover, Intake (Incl. Ref. #9)
6	92-0846	1	Asm-Cover (Incl. Ref. #9)
7	42-9430	1	Bolt W/Washer
8	67-2670	1	Hose-Breather
9	42-7510	2	Pipe
11	92-0847	1	Cap-Oil Filler
12	67-2770	2	Nut-Cap
13	67-2780	2	Washer
14	67-2760	1	Gasket
15	67-2740	3	Bolt-Flange
16	67-2680	2	Hanger-Engine
17	67-2340	4	Bolt W/Washer
18	56-0020	1	Plug-Expansion
19	67-2570	1	Plug-Taper
20	42-9570	4	Stud
21	42-9110	1	Gasket
22	67-4580	2	Bolt
23	67-4590	4	Bolt
24	67-4560	1	Manifold-Exhaust
25	94-1258	1	Gasket-Cylinder Head
26	67-4570	1	Gasket-Exhaust
27	67-4700	1	Lamp-Glow

Ref. No.	Part No.	Qty.	Description
28	75-4930	1	Asm-Cylinder Head (Incl. Ref. #18, 41 & 42)
29	67-4500	1	Switch-Thermo
30	67-4490	1	Gasket
31	67-4460	1	Gasket-Switch
32	67-4450	1	Fitting-Thermostat
33	67-4470	1	Bolt
34	67-2330	4	Bolt
35	67-4510	1	Gauge Nut-Temperature
36	43-2710	2	O-Ring
37	67-4480	1	Pipe-By-Pass
38	67-4440	1	Thermostat
39	67-4680	3	Plug-Glow
40	67-4690	1	Plate-Glow Plug
41	67-2710	3	Cap-Sealing
42	67-2700	6	Guide-Valve
43	67-2730	8	Bolt
44	67-4550	1	Gasket-Intake Manifold
45	67-4430	1	Gasket-Fitting
46	67-4420	1	Fitting-Water
49	67-2330	2	Bolt

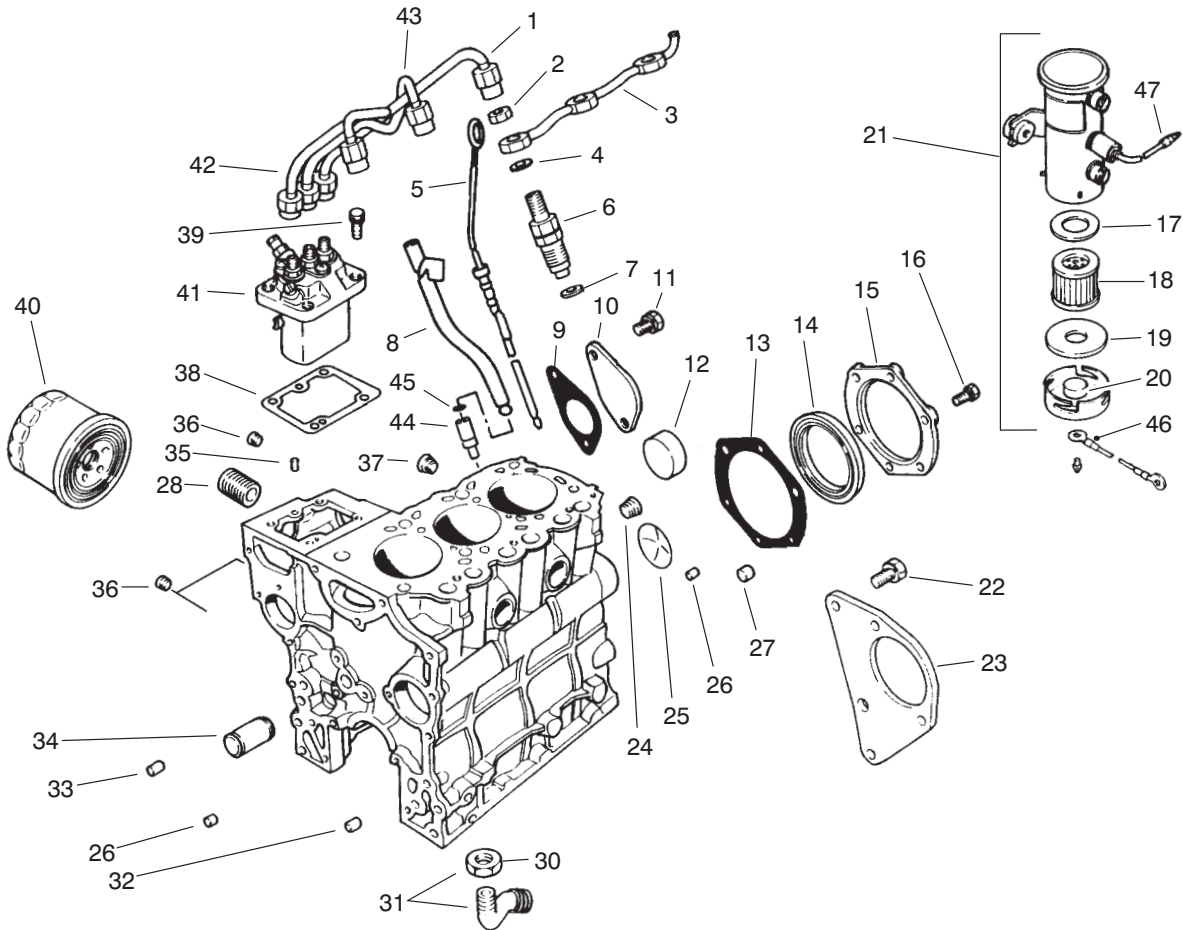


T-0568

Water Pump Assembly

Ref. No.	Part No.	Qty.	Description
1	67-4360	1	Pulley-Water Pump
2	98-2947	1	V-Belt
3	67-2330	2	Bolt
4	67-4400	1	Bolt
5	67-2600	1	Bolt
6	67-4380	1	Asm-Water Pump
7	67-4390	1	Gasket-Water Pump
8	67-4350	1	Switch-Oil Pressure
9	67-2610	2	Bolt
10	42-9490	4	Bolt W/Washer

Ref. No.	Part No.	Qty.	Description



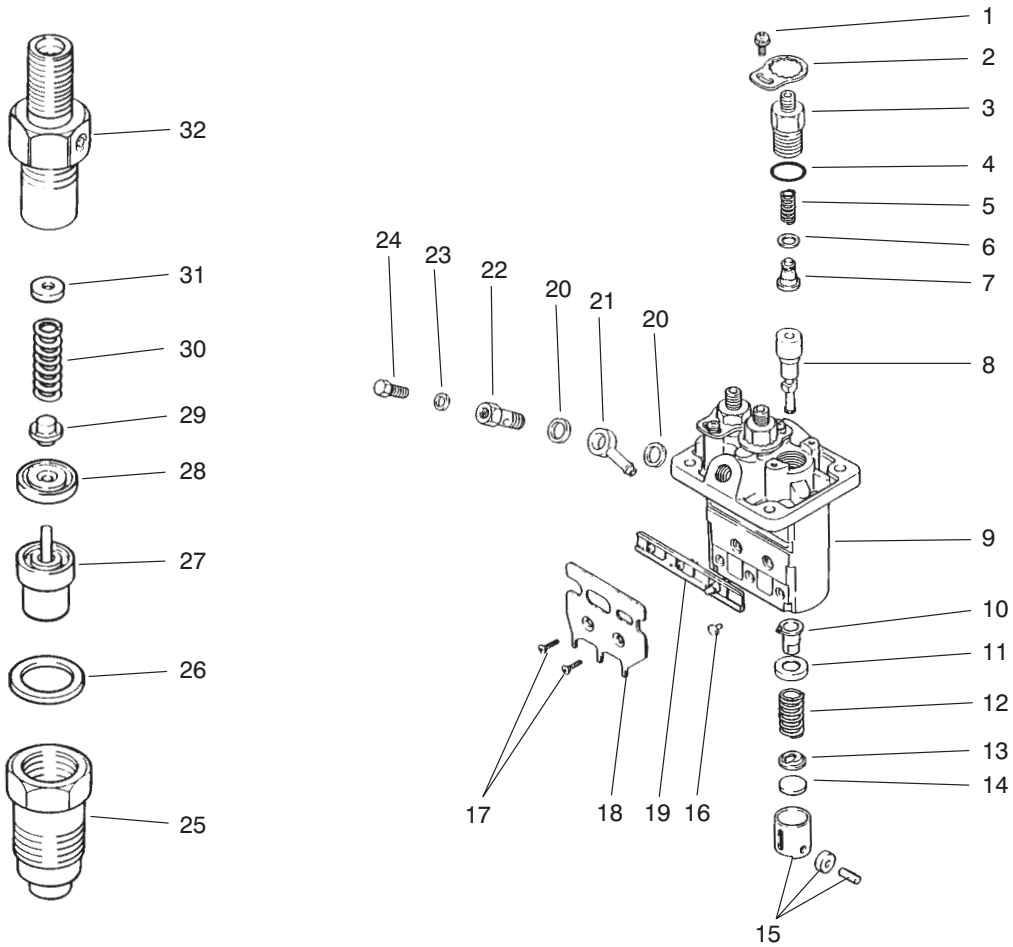
T-0569-3

Fuel Supply & Engine Block Assembly

Ref. No.	Part No.	Qty.	Description
1	67-3420	1	Asm-Pipe No. 3
2	67-3430	3	Nut
3	70-8700	1	Pipe-Fuel Return
4	67-3440	3	Gasket
5	70-8880	1	Dipstick
6	67-3380	1	Asm-Nozzle & Holder
7	67-3390	3	Gasket-Nozzle Holder
8	70-8870	1	Guide-Oil Level
9	67-2300	1	Gasket
10	67-2290	1	Cover
11	67-2340	2	Bolt W/Washer
12	56-0020	3	Plug-Expansion
13	67-2280	1	Gasket-Seal, Oil
14	67-2230	1	Seal-Oil
15	67-2270	1	Case-Oil Seal
16	67-2330	6	Bolt
17	43-2570	1	Gasket-Coil Side
18	43-2550	1	Filter
19	43-2560	1	Gasket
20	43-2580	1	Magnet
21	53-8150	1	Asm-Pump (Incl. Ref. #17-20)
22	67-2440	3	Bolt W/Washer
23	67-2430	1	Bracket-Starter
24	67-2390	1	Plug-Taper
25	67-2350	1	Plug-Expansion

Ref. No.	Part No.	Qty.	Description
26	67-2360	2	Bushing-Knock
27	67-2380	3	Bushing-Knock
28	56-1230	1	Shaft-Oil Filter
30	42-9650	1	Nut-Jam
31	67-4340	1	Asm-Screen (Incl. Ref. #30)
32	67-2370	1	Bushing-Knock
33	42-7190	2	Bushing-Knock
34	67-2260	1	Shaft-Idler
35	56-0220	2	Pin-Dowel
36	67-2210	3	Plug-Taper
37	56-0100	1	Plug-Taper
38	67-3280	1	Shim 0.2 mm
*	67-3290	1	Shim 0.3 mm
*	67-3300	1	Shim 0.5 mm
*	67-3310	1	Shim 0.4 mm
*	67-3320	1	Shim 0.6 mm
*	67-3330	1	Shim 0.7 mm
*	67-3340	1	Shim 0.8 mm
*	67-3350	1	Shim 0.9 mm
*	67-3360	1	Shim 1.0 mm
39	67-3370	4	Bolt W/Washer
40	67-4330	1	Asm-Oil Filter
41	75-5020	1	Asm-Injector Pump
42	67-3400	1	Asm-Pipe No. 1

*Not Illustrated



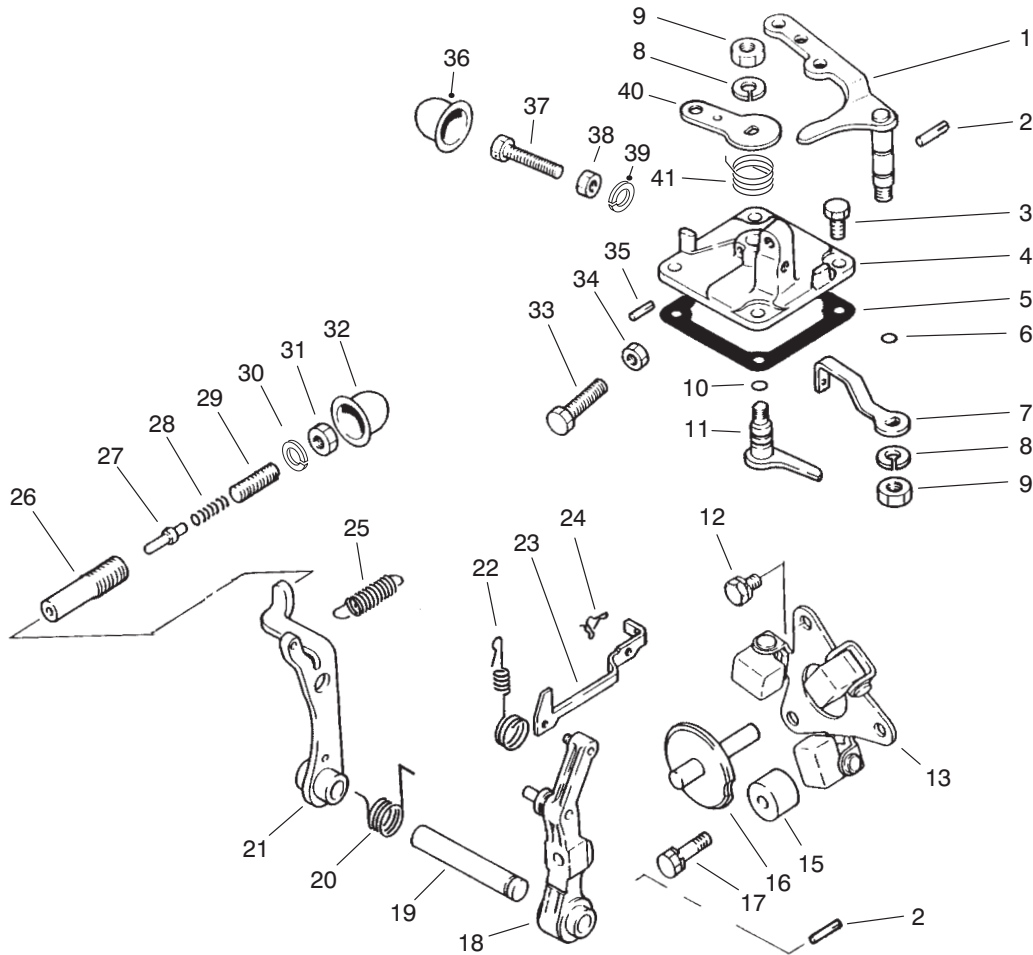
T-0570-4

Fuel Injection Pump Assembly

Ref. No.	Part No.	Qty.	Description
1	67-3770	3	Screw W/Washer
2	67-3760	3	Plate-Lock
3	67-3740	3	Holder-Delivery Valve
4	67-3480	3	O-Ring
5	67-3490	3	Spring
6	42-8240	3	Gasket
7	67-3500	3	Valve
8	75-4970	3	Element
9	67-3460	1	Housing-Pump
10	67-3520	3	Sleeve
11	67-3530	3	Seat-Spring Upper
12	67-3540	3	Spring
13	67-3550	3	Seat-Spring Lower
14	67-3560	1	Plate-Shim 1.85 mm
*	67-3570	1	Plate-Shim 1.9 mm
*	67-3580	1	Plate-Shim 1.95 mm
*	67-3590	1	Plate-Shim 2.0 mm
*	67-3600	1	Plate-Shim 2.05 mm
*	67-3610	1	Plate-Shim 2.1 mm
*	67-3620	1	Plate-Shim 2.15 mm
*	67-3630	1	Plate-Shim 2.2 mm
*	67-3640	1	Plate-Shim 2.25 mm
*	67-3650	1	Plate-Shim 2.3 mm
*	67-3660	1	Plate-Shim 2.35 mm
*	67-3670	1	Plate-Shim 2.4 mm
14	67-3680	1	Plate-Shim 2.45 mm

Ref. No.	Part No.	Qty.	Description
*	67-3690	1	Plate-Shim 2.5 mm
15	67-3700	3	Tappet
16	67-3810	3	Pin-Tappet Guide
17	67-3790	2	Screw
18	67-3800	1	Bracket-Wire Stop
19	67-3780	1	Rack
20	67-3750	2	Washer
21	67-3740	1	Nipple-Swivel
22	67-3730	1	Screw
23	67-3720	1	Washer
24	67-3710	1	Screw-Air Bleed
25	67-3970	3	Nut-Retaining
26	67-3980	3	Gasket
27	67-3960	3	Nozzle
28	67-3950	3	Piece-Distance
29	67-3940	3	Pin-Pressure
30	67-3930	3	Spring
31	67-3830	1	Washer 1.25 mm
*	67-3840	1	Washer 1.3 mm
*	67-3850	1	Washer 1.35 mm
*	67-3860	1	Washer 1.4 mm
*	67-3870	1	Washer 1.45 mm
*	67-3880	1	Washer 1.5 mm
*	67-3890	1	Washer 1.55 mm

*Not Illustrated



T-0571-2

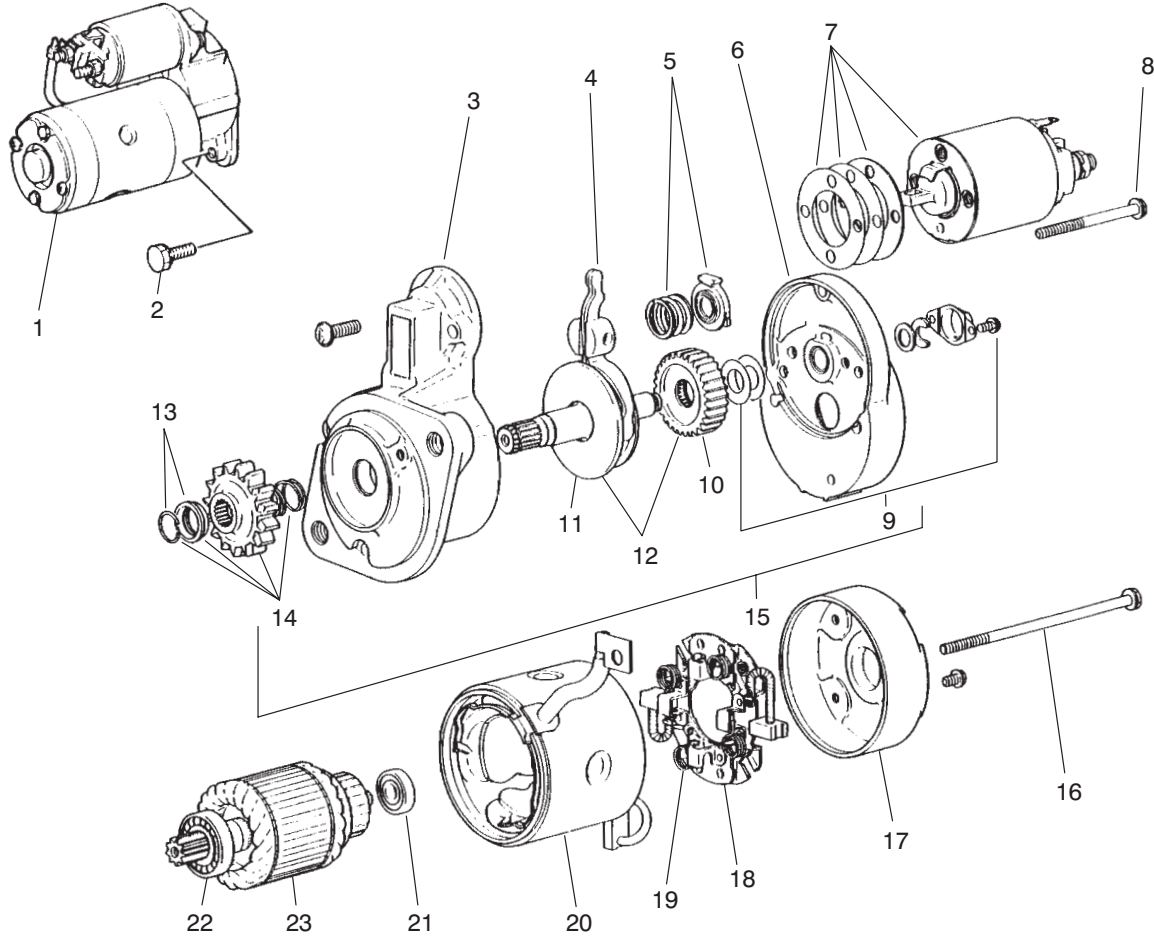
Governor Assembly

Ref. No.	Part No.	Qty.	Description
1	67-3990	1	Lever-Speed Control
2	67-4000	2	Pin
3	67-4270	4	Bolt
†4		1	Cover-Governor
5	67-4160	1	Gasket
6	42-8830	1	O-Ring
7	75-4980	1	Lever-Governor Spring
8	67-3260	2	Washer
9	42-9640	2	Nut-Jam
10	42-8830	1	O-Ring
11	67-4140	1	Lever-Stop
12	42-9430	2	Bolt W/Washer
13	67-4040	1	Asm-Weight
15	67-4010	1	Stopper
16	67-4070	1	Shaft-Sliding
17	67-4280	1	Bolt W/Washer
18	67-4060	1	Lever-Governor
19	67-4050	1	Shaft-Governor
20	67-5040	1	Spring
21	67-4090	1	Lever-Tension
22	70-8720	1	Spring-Tie Rod
23	67-4030	1	Rod-Tie
24	67-4080	1	Clip
25	75-4990	1	Spring-Governor
†26		1	Case-Torque Spring
†27		1	Stopper

Ref. No.	Part No.	Qty.	Description
†28		1	Spring-Torque
†29		1	Screw-Adjusting
†30		1	Nut-Special
†31		1	Nut
†32		1	Cap-Sealing Torque Set
33	95-9605	1	Bolt-Speed Set
34	67-4290	1	Nut
35	67-4120	1	Pin-Grooved
†36		1	Cover-High Speed Set
†37		1	Bolt-High Speed Set
†38		1	Nut-High Speed Set
†39		1	C-Ring, High Speed Set
40	67-4150	1	Lever-Stop
41	94-3827	1	Spring-Return
†*		1	Spring Set (Incl. Ref. #26-29 & 31))

*Not Illustrated

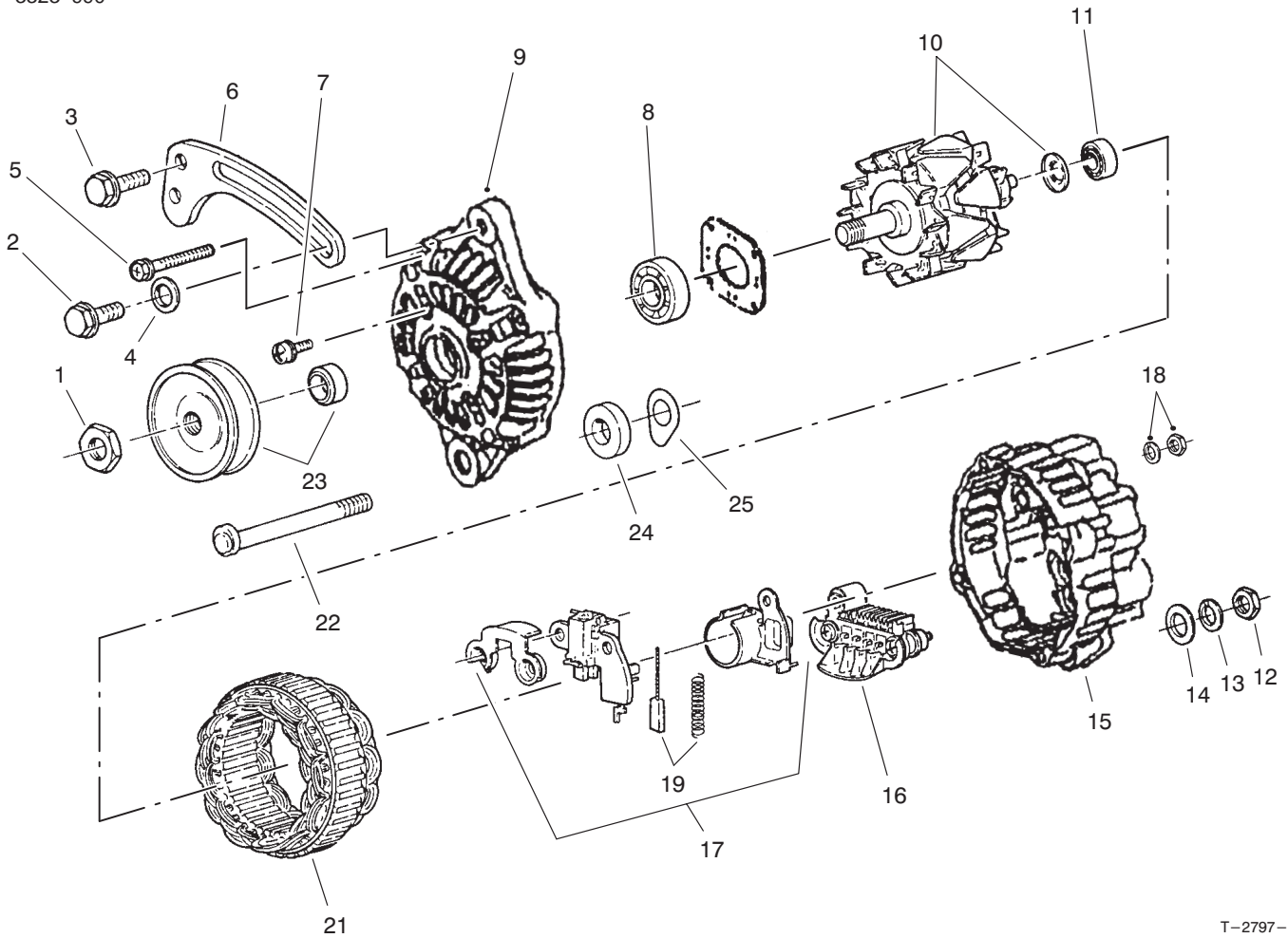
†Items must be serviced by a Mitsubishi Authorized Toro Dealer/Distributor.



T-0572

Starter Assembly

Ref. No.	Part No.	Qty.	Description	Ref. No.	Part No.	Qty.	Description
1	70-8760	1	Asm-Starter (Incl. Ref. #3-23)	22	56-1590	1	Bearing-Front
2	67-4610	2	Bolt W/Washer	23	56-1580	1	Armature Set (Incl. Ref. #21 & 22)
3	70-8770	1	Bracket-Front				
4	67-4720	1	Lever				
5	67-4730	1	Spring Set				
6	70-8780	1	Bracket-Center				
7	67-4750	1	Switch				
8	56-1570	1	Bolt Set				
9	56-1680	1	Cover Set				
10	56-1670	1	Gear				
11	67-4790	1	Shaft				
12	67-4780	1	Gear Set (Incl. Ref. #10 & 11)				
13	56-1640	1	Stopper Set				
14	67-4770	1	Pinion Set (Incl. Ref. #13)				
15	67-4760	1	Asm-Shaft (Incl. Ref. #9, 12 & 14)				
16	56-1610	1	Bolt				
17	56-1720	1	Bracket-Rear				
18	56-1700	1	Holder-Brush (Incl. Ref. #19)				
19	56-1710	4	Spring-Brush				
20	67-4800	1	Yoke				
21	56-1600	1	Bearing-Rear				



T-2797-1

Alternator Assembly

Ref. No.	Part No.	Qty.	Description
1	98-2929	1	Nut Set
2	67-4660	1	Bolt-Flange
3	42-9440	2	Bolt w/Washer
4	54-8660	1	Washer-Flat
5	98-2931	1	Bolt Set (4 Bolts)
6	98-2948	1	Brace-Generator
7	98-2926	1	Screw Set (3 Screws)
8	98-2927	1	Bearing-Front
9	98-2925	1	Asm-Front Housing (Incl. Ref. #7 & 8)
10	98-2928	1	Asm-Rotor (Incl. Ref. #11)
11	98-2932	1	Bearing-Rear
12	67-4670	1	Nut
13	67-3260	1	Washer
14	42-9660	1	Washer
15	98-2934	1	Asm-Housing, Rear (Incl. Ref. #12-19)
16	98-2937	1	Asm-Rectifier
17	98-2935	1	Asm-Regulator (Incl. Ref. #18 & 19)
18	98-2938	1	Nut Set-Terminal
19	98-2936	2	Asm-Brush
21	98-2933	1	Asm-Stator
22	67-4640	1	Bolt
23	98-2930	1	Pulley Set

Ref. No.	Part No.	Qty.	Description
24	67-4620	1	Spacer
25	43-0370	1	Shim
*	98-2949	1	Asm-Alternator (Incl. Ref. #1, 5, 7-11, 15-21 & 23)

