



Greensmaster 1600 Traction Unit & Cutting Unit

Model No. 04060 – 200000001 and Up

Model No. 04060TE – 200000001 and Up

Parts Catalog

Ordering Replacement Parts

To order replacement parts, please supply: the part number, the quantity, and the description of each part desired.

Understanding Reference Numbers

Each identified part in an illustration has a reference number. The reference number for a part also appears in the parts list, along with other information about the part.

This catalog uses two special reference number formats, one to indicate parts in a service assembly and another to indicate the quantity of a given part in an illustration.

Service Assembly Reference Numbers

Parts in service assemblies have reference numbers in the form **a:b**. The **a** represents the reference number of the entire service assembly and the **b** represents a sequential number unique to each part within the service assembly.

For example, a wheel assembly might be identified by reference number **6**, the tire by **6:1**, the valve by **6:2**, and the wheel by **6:3**. When you order the assembly identified by reference number **6**, you receive all parts identified by reference numbers **6:1**, **6:2**, and **6:3**. However, you may also order any part individually.

Reference numbers of this type appear in illustrations and in part lists.

Reference Numbers Indicating Quantity

In an illustration, if a reference number indicates more than one part, the reference number has the form **nX y**. The **n** represents the quantity of the part, the **X** is the multiplication symbol, and the **y** represents the reference number.

For example, in an illustration, the reference number **2X 37** means that two of the parts identified by reference number **37** are indicated.

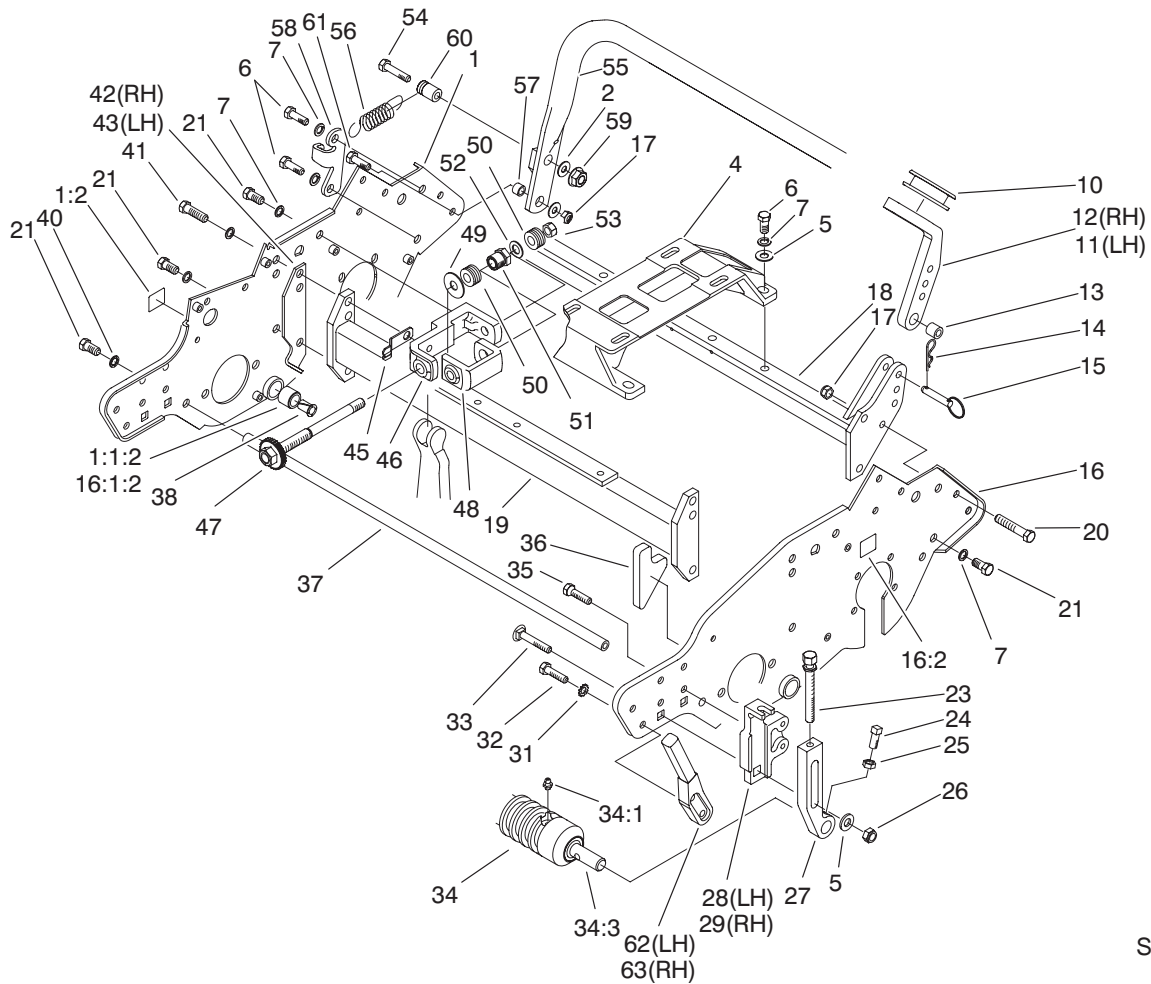
Contents

Description	Page	Description	Page
Frame Assembly	3-4	Full Roller Assembly	18
Reel Drive Assembly	5-6	Special Tools	19
Reel Assembly	7	Engine Crankcase Assembly	20
Drum Drive Assembly	8-9	Engine Camshaft & Valves Assembly	21
Drum and Basket Assembly	10	Engine Ignition Assembly	22
Differential Assembly		Engine Governor Assembly	23
Peerless Model No. 100-116	11	Engine Carburetor Assembly	24
Countershaft Assembly	12-13	Engine Air Cleaner & Muffler Assembly	25
Engine and Bellcrank Assembly	14-15	Engine Fuel Tank Assembly	26
Handle Assembly	16-17	Engine Decals	27

Part Description Abbreviations

Part descriptions in this catalog may include the following abbreviations.

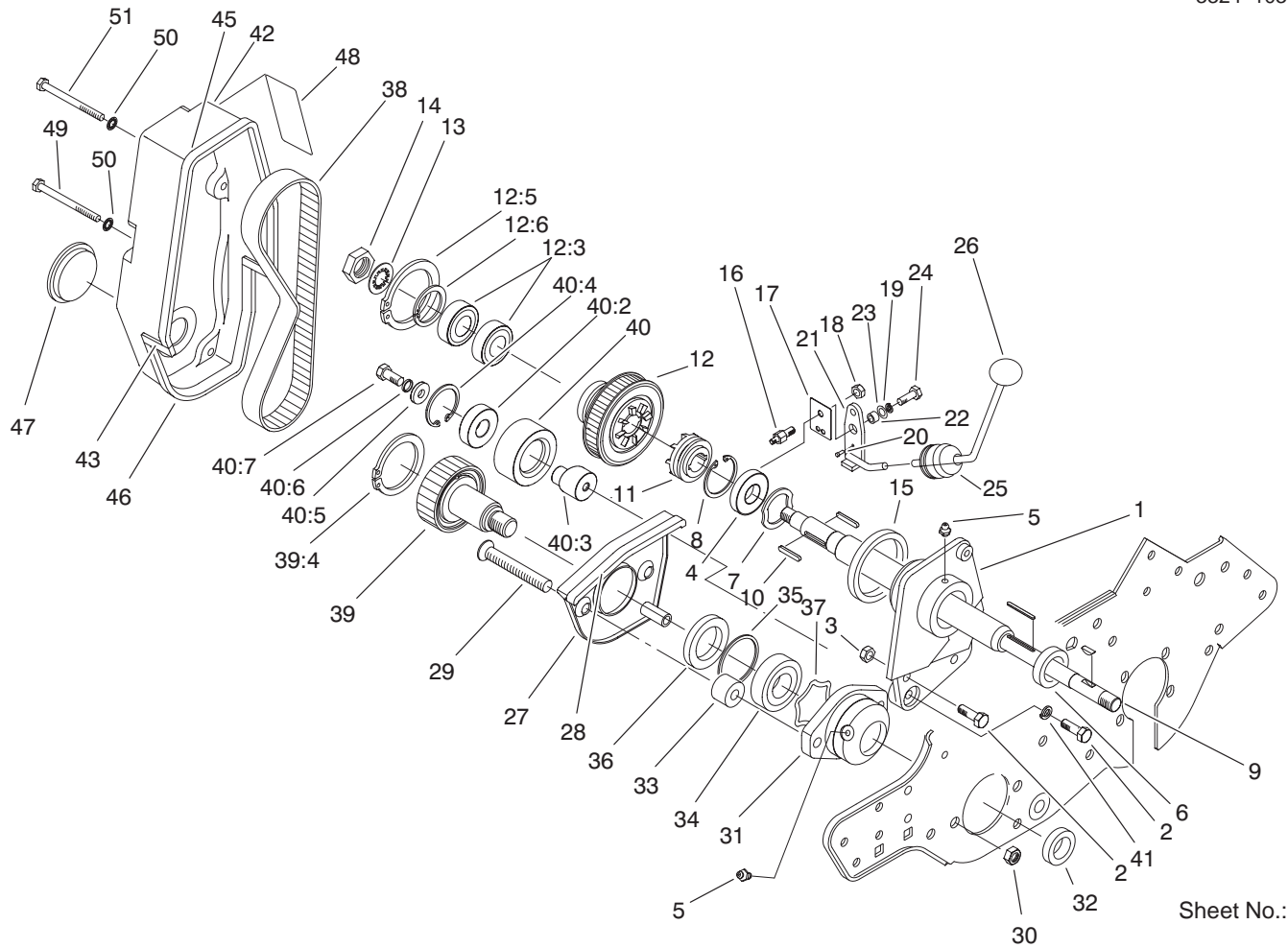
Abbreviation	Meaning	Abbreviation	Meaning
AR	as required	INC	incorporated
ASM	assembly	LH	left hand
CARR	carriage	NI	nylon insert
DEG	degrees	PPH	Phillips pan head
FH	flat head	PTH	Phillips truss head
GA	gauge	PTO	power take off
HF	hex flange	RH	right hand
HH	hex head	SFH	slotted fillister head
HHF	hex head flange	SHH	slotted hex head
HLH	hex lag head	SQH	square head
HJ	hex jam	SHWH	slotted hex washer head
HOC	height-of-cut	SPH	slotted pan head
HS	hex socket	SRH	slotted round head
HSBH	hex socket button head	STD	standard
HSFH	hex socket flat head	TAP	self tapping
HSH	hex socket head	TTH	Torx truss head
HWH	hex washer head	WH	wing head
HWHTF	hex washer head thread forming		



Sheet No.: 2

Frame Assembly

Ref. No.	Part No.	Qty.	Description	Ref. No.	Part No.	Qty.	Description
1	94-9004	1	RH Side Plate ASM	16:2	93-9389	1	Decal-Warning, Belt (Japan)
1:1		1	RH Side Plate / Bushing ASM	17	3296-29	4	Nut-Lock, NI
1:1:2	63-9510	1	Bushing	18	93-9026-01	1	Frame-Rear
1:2	93-9356	2	Decal-Warning, Belt (Japan)	19	93-9032-01	1	Frame-Front
1:2	93-9389	2	Decal-Warning, Belt (Japan)	20	322-9	2	Screw-HH
2	3256-2	3	Washer-Flat	21	323-4	10	Screw-HH
4	88-7670	1	Mount-Engine	23	93-6051	2	Screw - HOC
5	3256-24	6	Washer-Flat	24	3242-4	2	Screw-Set, SQH
6	323-5	6	Screw-HH	25	3218-2	2	Nut-Jam
7	3253-21	16	Washer-Lock	26	32128-21	2	Nut-HF
10	65-7510	2	Grommet-Handle	27	93-6090	2	Arm - HOC
11	93-6038	1	Arm - Handle Support, LH	28	93-6049	1	Bracket - HOC, LH
12	93-6037	1	Arm - Handle Support, RH	29	93-6048	1	Bracket - HOC, RH
13	93-6024	2	Bushing - Handle Support	31	3255-8	4	Washer-Lock/Ext
14	3290-467	2	Pin-Hair	32	322-2	4	Screw-HH
15	93-6029	2	Pin-Clevis, Ring	33	3231-5	2	Screw-CARR
16	94-9005	1	LH Side Plate ASM	34	93-9039	1	Weihle Roller ASM
16:1		1	LH Side Plate / Bushing ASM	34:1	302-5	2	Fitting-Lube
16:1:2	63-9510	1	Bushing	34:3	52-3180	2	Bearing-Front Roller
16:2	93-9356	1	Decal-Warning, Belt	35	92-8914	4	Bolt - Tapered Face
				36	93-6064	1	Seal-Grass Catcher
				37	94-5867	1	Rod - Frame
				38	52-2890	2	Bushing-Nylon
				40	3254-6	2	Washer-Lock, Int.
				41	323-6	2	Screw-HH

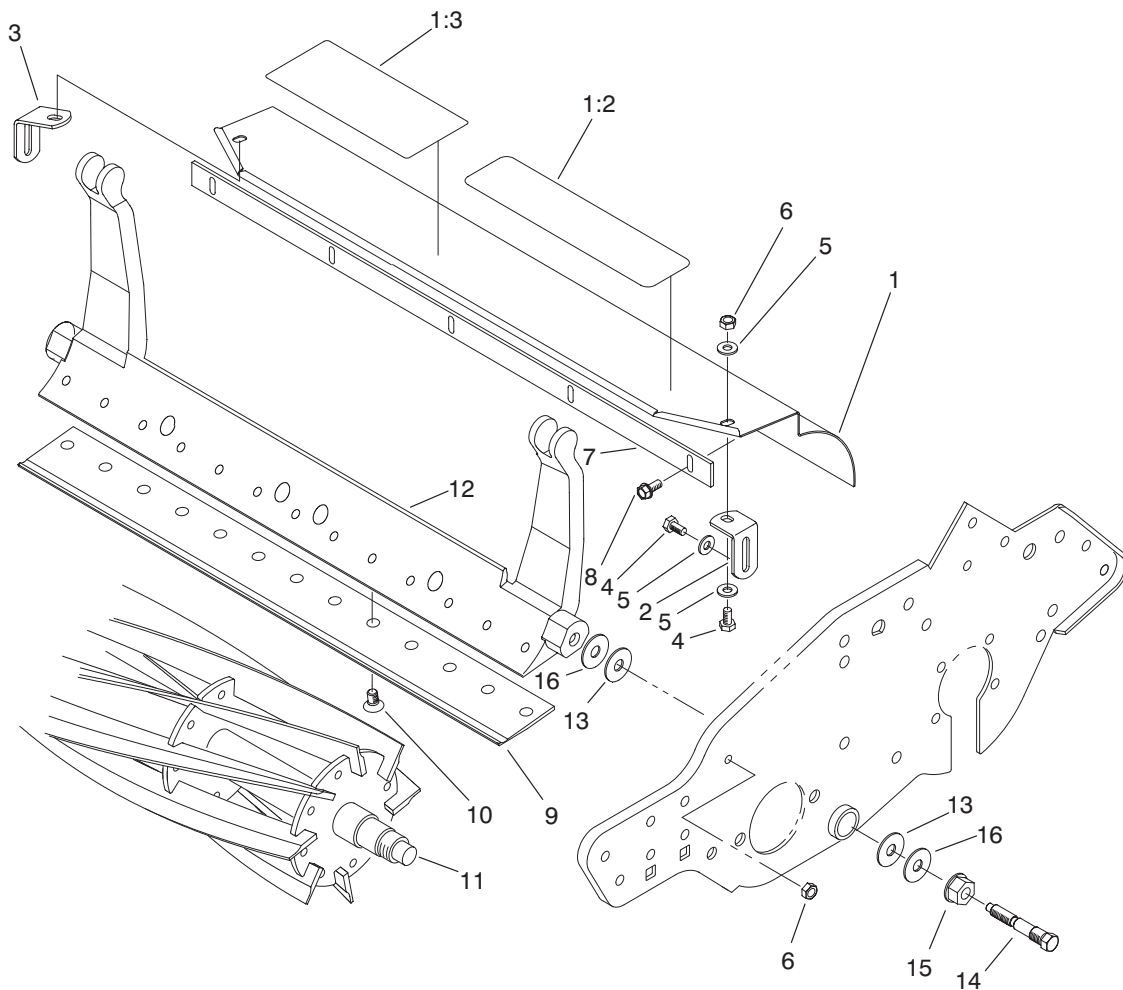


Sheet No.: 3

Reel Drive Assembly

Ref. No.	Part No.	Qty.	Description
1	92-8013	1	Housing-Clutch
2	322-5	3	Screw-HH
3	3296-29	2	Nut-Lock, NI
4	251-204	1	Bearing-Ball
5	302-5	2	Fitting-Lube
6	253-118	1	Oil Seal
7	88-7720	1	Spring-Wave
8	32120-11	1	Ring-Retaining
9	94-5872	1	Shaft - Power
10	88-7150	2	Key-End Radius
11	65-6940	1	Clutch - Jaw Slider
12	88-7830	1	Clutch & Pulley ASM
12:3	251-336	2	Bearing
12:5	32151-95	1	Ring-Retaining
12:6	32151-89	1	Ring-Retaining, Bowed
13	3254-4	1	Washer-Lock/Int
14	3220-5	1	Nut-Hex Jam
15	65-6970	1	Seal - Felt
16	93-9014	1	Pin - Clutch, Actuator
17	65-6290	1	Spring-Detent, Clutch
18	3296-42	1	Nut-Lock
19	3253-3	1	Washer-Lock/Sp
20	95-5731	1	Screw-Drive, Hardened
21	88-7170	1	Lever-Clutch

Ref. No.	Part No.	Qty.	Description
22	88-7860	1	Spacer -Clutch
23	3290-414	1	Belleville Washer
24	321-4	1	Screw-HH
25	65-8960	1	Boot-Clutch
26	233-69	1	Knob
27	65-7190-01	1	Cover-Groomer Arm
28	65-7131	1	Seal Strip-Cover
29	3289-23	2	Capscrew
30	3296-39	2	Nut-Lock, NI
31	65-8640	1	Housing - Bearing
32	253-96	1	Oil Seal
33	65-8290	2	Standoff-Cover
34	251-342	1	Bearing-Ball
35	32151-92	1	Ring-Retaining
36	253-163	1	Seal
37	3290-485	1	Washer - Wave
38	65-6200	1	Belt
39	88-7840	1	Pulley & Drive ASM
39:4	32151-95	1	Ring-Retaining
40	88-7850	1	Idler Pulley ASM
40:2	38-7820	1	Bearing-Ball
40:3	88-7190	1	Spacer-Pulley Support, Shaft
40:4	32120-42	1	Ring-Retaining
40:5	88-7200	1	Washer-Flat
40:6	3253-4	1	Washer

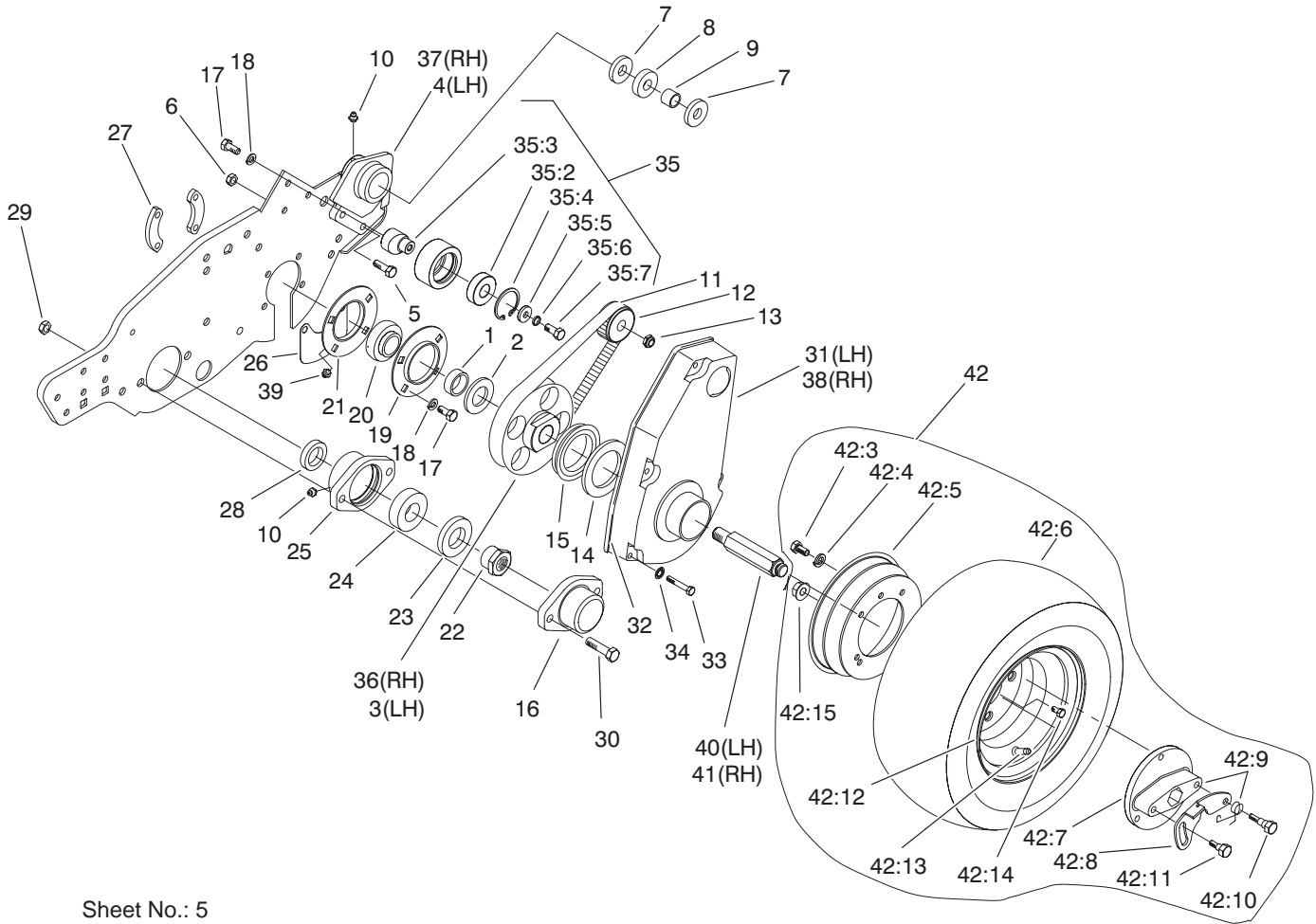


Sheet No.: 4

Reel Assembly

Ref. No.	Part No.	Qty.	Description
1	94-9009	1	Grass Shield ASM
1:2	84-6560	1	Decal-Warning (Japan)
1:2	93-8064	1	Decal-Danger
1:3	93-6098	1	Decal - Service
1:3	93-7285	1	Decal-Service (Danish)
1:3	93-7286	1	Decal-Service (Dutch)
1:3	93-7287	1	Decal-Service (Finnish)
1:3	93-7288	1	Decal-Service (Italian)
1:3	93-7289	1	Decal-Service (Norwegian)
1:3	93-7290	1	Decal-Service (Portuguese)
1:3	93-7291	1	Decal-Service (Swedish)
1:3	93-9391	1	Decal-Service (French)
1:3	93-9392	1	Decal-Service (Spanish)
1:3	93-9393	1	Decal-Service (German)
1:3	93-9394	1	Decal-Service (Japan)
2	65-6450	1	Bracket - LH
3	65-6460	1	Bracket - RH

Ref. No.	Part No.	Qty.	Description
4	321-3	4	Screw-HH
5	3256-22	6	Washer-Flat
6	3296-42	4	Nut-Lock
7	94-5879	1	Bar - Cut Off
8	32144-73	6	Screw-HWH
9	93-9015	1	Bedknife-1/8"
9	94-5885	1	Bedknife - Tournament
10	57-4910	16	Screw
11	95-0900	1	8 Blade Reel ASM - 26"
12	93-9049-01	1	Bedbar - Machine
13	52-2900	4	Washer
14	65-6270	2	Bolt - Bedbar
15	32128-48	2	Nut HH Flange
16	52-2860	4	Washer

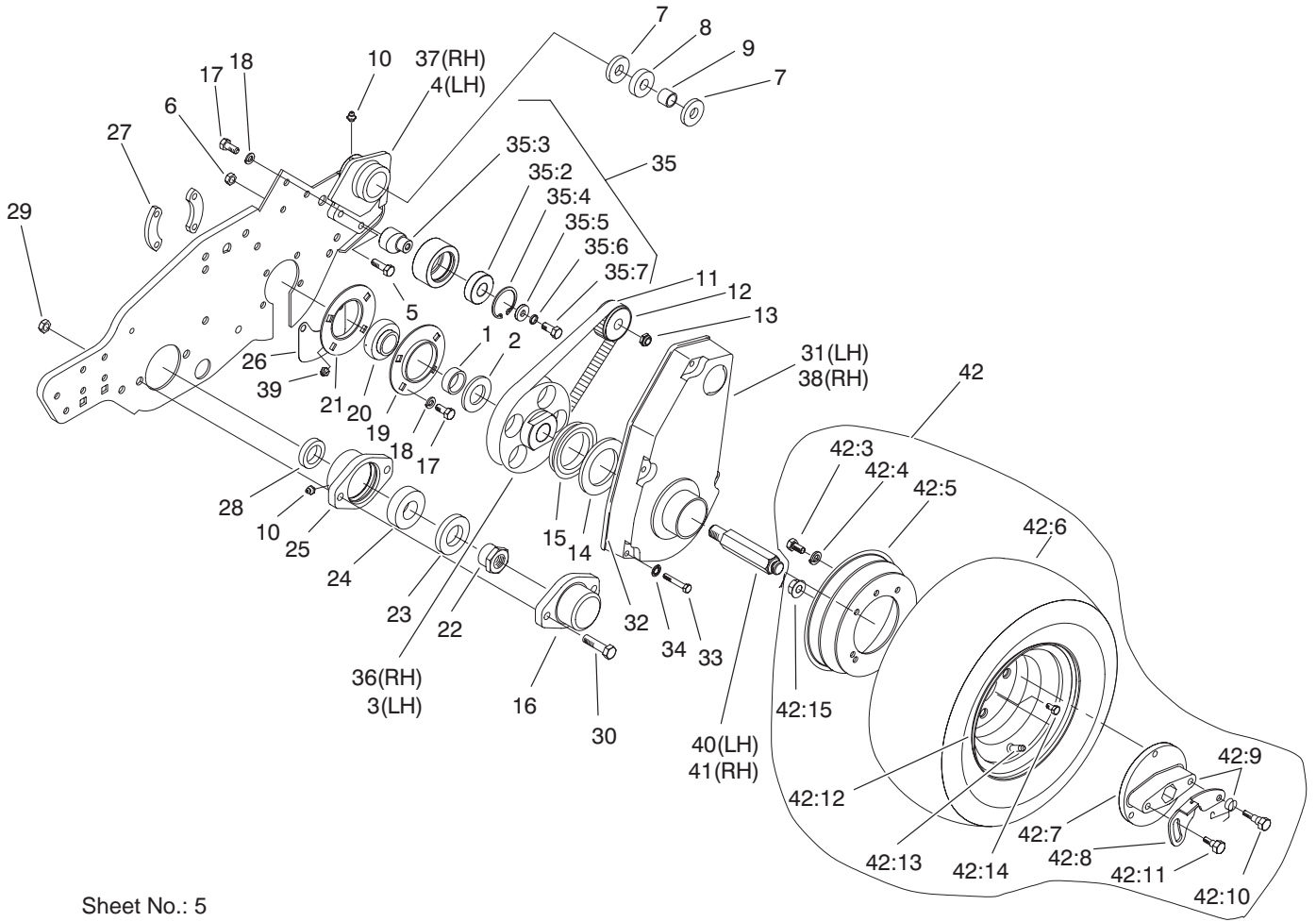


Sheet No.: 5

Drum Drive Assembly

Ref. No.	Part No.	Qty.	Description
1	88-7530	2	Spacer
2	88-7540	2	Washer - Backup
3	94-9017	1	Pulley - Drum, LH
4	88-7470	1	Housing-LH
5	322-5	4	Screw-HH
6	3296-29	4	Nut-Lock, NI
7	253-160	4	Seal - Grease
8	251-338	2	Bearing
9	86-7130	2	Spacer - Pulley
10	302-5	3	Fitting-Lube
11	65-6210	2	Belt
12	65-6660	2	Pulley
13	3296-57	2	Nut-Lock NI
14	94-9018	2	Washer - Plastic
15	253-161	2	Seal-V-Ring
16	65-6220-01	1	Cover - Reel End
17	322-3	10	Screw-HH
18	3253-4	10	Washer
19	65-6590	2	Flangette
20	88-7880	2	Bearing-Self Aligning
21	95-0923	2	Flangette
22	92-7302	1	Nut - Bearing, Lock
23	253-163	1	Seal
24	251-342	1	Bearing-Ball
25	65-8640	1	Housing - Bearing
26	65-8720	2	Closure - Side Plate

Ref. No.	Part No.	Qty.	Description
27	65-8730	4	Clamp-Bearing
28	253-96	1	Oil Seal
29	3296-39	2	Nut-Lock, NI
30	323-7	2	Screw-HH
31	88-7680-01	1	Cover - Drum Belt LH
32	88-7810	2	Seal Strip-Drum Cover
33	321-11	8	Screw-HH
34	3254-8	8	Washer-Lock - Int
35	88-7850	2	Idler Pulley ASM
35:2	38-7820	1	Bearing-Ball
35:3	88-7190	1	Spacer-Pulley Support, Shaft
35:4	32120-42	1	Ring-Retaining
35:5	88-7200	1	Washer-Flat
35:6	3253-4	1	Washer
35:7	322-3	1	Screw-HH
36	94-9016	1	Pulley - Drum, RH
37	88-7490	1	Housing-RH,
38	88-7690-01	1	Cover-Drum Belt RH
39	302-40	2	Fitting-Grease
40	88-7580	1	Shaft - Transport Wheel
41	88-7590	1	Shaft - Transport Wheel
42	88-7570	2	Transport Wheel ASM

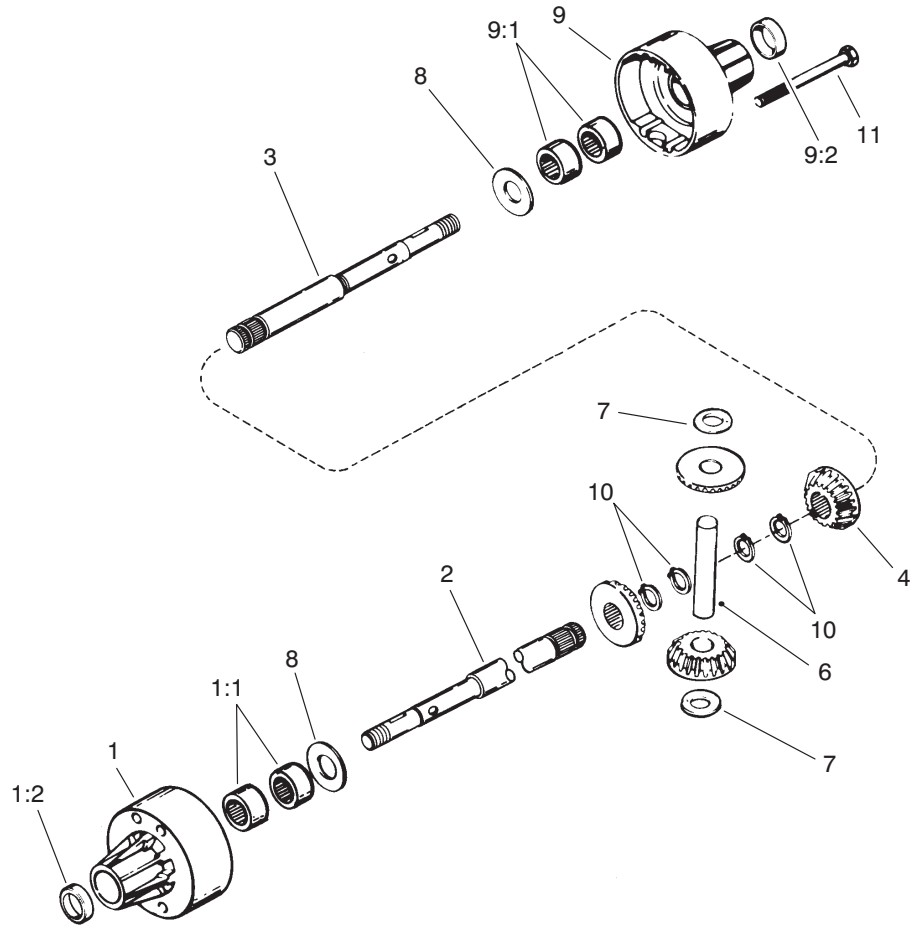


Sheet No.: 5

Drum Drive Assembly (Continued)

Ref. No.	Part No.	Qty.	Description
42:3	48-7700	3	Screw
42:4	68-9420	3	Washer-Lock
42:5	65-7970	1	Rim - Shallow
42:6	65-7940	1	Tire
42:7	88-7610	1	Hub - Transport Wheel
42:8	65-8020	1	Lever-Retaining Spring
42:9	65-8050	1	Spring
42:10	65-8030	1	Mounting Bolt - Long
42:11	65-8040	1	Mounting Bolt - Short
42:12	65-7960	1	Rim - Deep
42:13	65-7950	1	Tube w/Valve
42:14	48-7610	4	Screw
42:15	65-7980	4	Nut-Flange

Ref. No.	Part No.	Qty.	Description



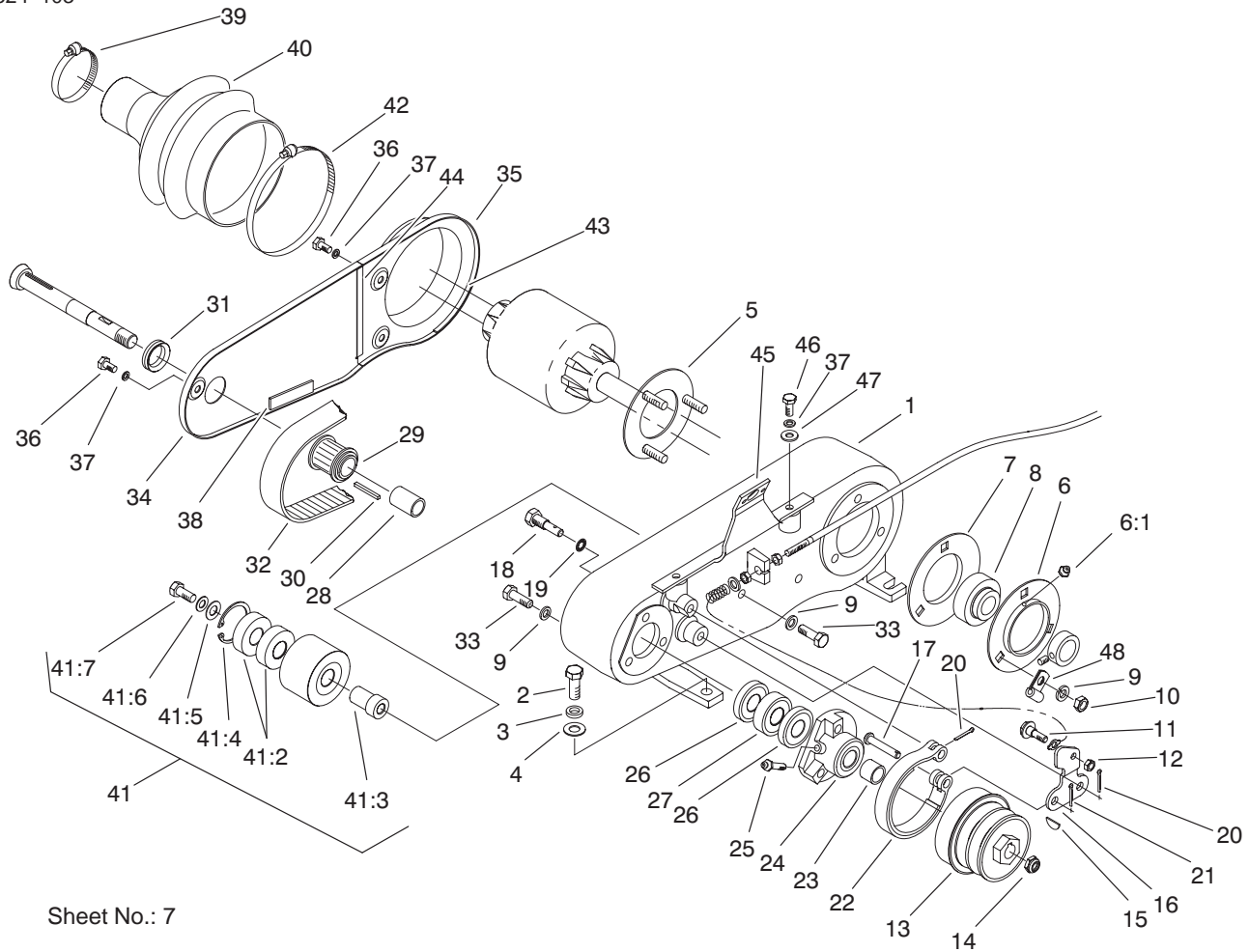
Sheet No.: A1
T-1571

Differential Assembly Peerless Model No. 100-116

Ref. No.	Part No.	Qty.	Description
1	95-5741	1	Differential Carrier
1:1	95-5738	4	Needle Bearing
1:2	95-5737	2	Oil Seal
2	95-5743	1	Axle (Long)
3	95-5742	1	Axle (Short)
4	104-0503	1	Differential Gear Set
6	95-5747	1	Drive Pin
7	95-5744	2	Flat Washer
8	95-5745	2	Washer
9	95-5740	1	Differential Carrier
9:1	95-5738	4	Needle Bearing
9:2	95-5737	2	Oil Seal
10	95-5746	4	Retaining Ring
11	95-5739	4	Screw
*15	95-5734	1	Betonite Grease

Ref. No.	Part No.	Qty.	Description

* Not illustrated

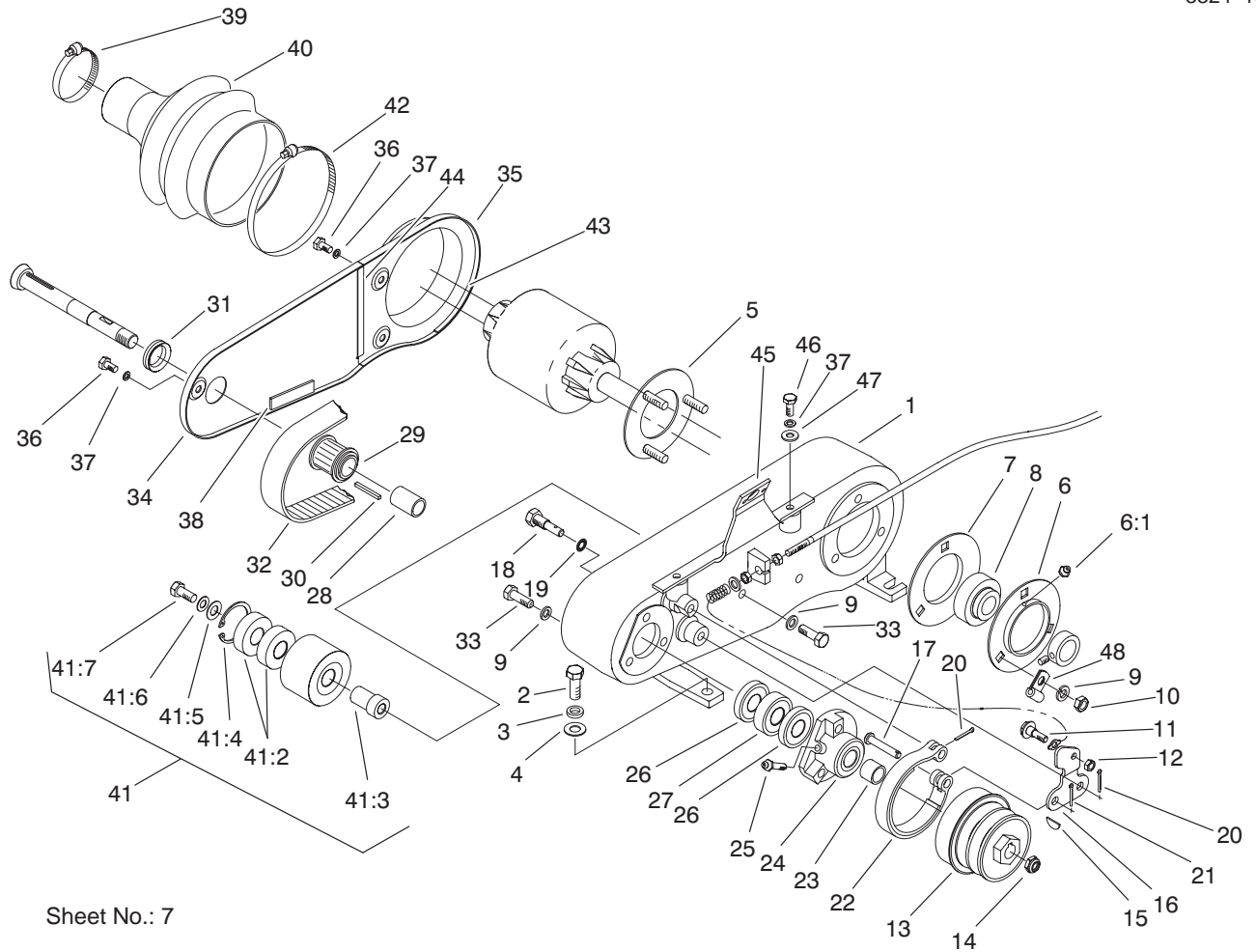


Sheet No.: 7

Countershaft Assembly

Ref. No.	Part No.	Qty.	Description
1	88-7230	1	Housing-Counter Shaft
2	323-5	4	Screw-HH
3	3253-21	4	Washer-Lock
4	3256-24	4	Washer-Flat
5	65-6720	1	Plate - Screw
6	65-6700	1	Flangette - Lube
6:1	302-65	1	Zerk
7	65-6710	1	Flangette
8	251-343	1	Bearing-Ball
9	3253-4	7	Washer
10	3218-2	3	Nut-Jam
11	11-9030	1	Screw-Shoulder
12	3296-42	1	Nut-Lock
13	92-9212	1	Pulley - Shaft Input
14	3296-57	1	Nut-Lock NI
15	3257-30	1	Key-Woodruff
16	65-8610	1	Lever - Brake
17	283-75	1	Pin-Clevis
18	65-6810	2	Support - Brake
19	3254-6	2	Washer-Lock, Int.
20	3272-6	2	Pin-Cotter
21	3272-8	1	Cotter Pin
22	65-8700	1	Band - Brake
23	86-7130	1	Spacer - Pulley
24	65-6760	1	Housing - Bearing

Ref. No.	Part No.	Qty.	Description
25	302-64	1	Fitting - Grease
26	253-160	2	Seal - Grease
27	251-338	1	Bearing
28	86-7140	1	Spacer
29	65-8910	1	Pulley - Countershaft
30	65-6850	1	Key - Square
31	88-7710	1	Seal-V Ring
32	65-9080	1	Belt
33	322-5	4	Screw-HH
34	88-7240-03	1	Cover Box, Front
35	88-7250-03	1	Cover-Box, Rear
36	321-2	3	Screw-HH
37	3253-3	5	Washer-Lock/Sp
38	65-6901	1	Seal Strip - Cover
39	2412-139	1	Clamp-Hose 2"
40	94-5866	1	Boot - Differential
41	88-7870	1	Idler Pulley ASM
41:2	38-7820	2	Bearing-Ball
41:3	88-7380	1	Spacer-Pulley Support
41:4	32120-42	1	Ring-Retaining
41:5	88-7200	1	Washer-Flat
41:6	3253-4	1	Washer
41:7	322-3	1	Screw-HH
42	2412-140	1	Clamp-Hose
43	65-6902	1	Seal Strip - Cover

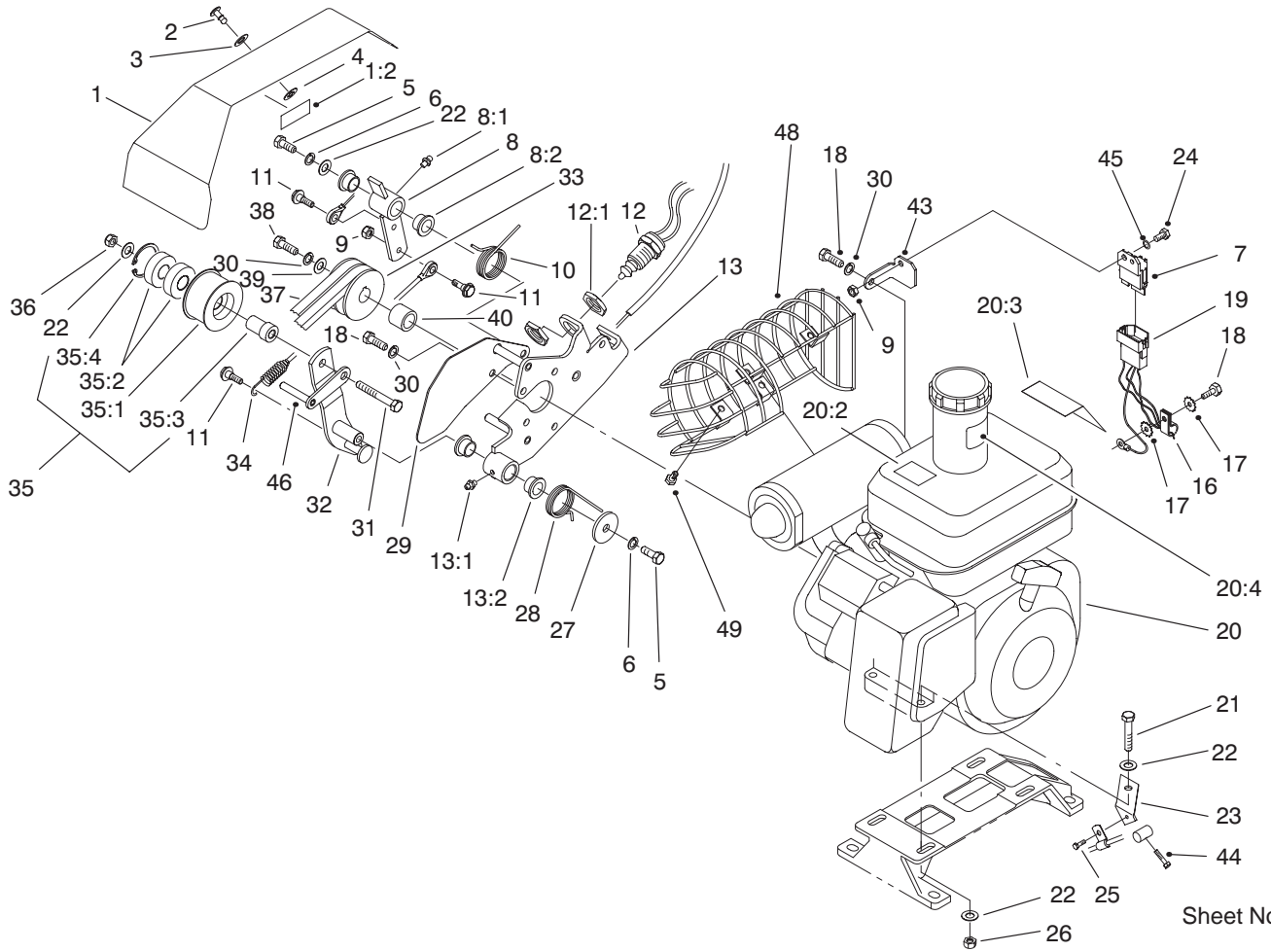


Sheet No.: 7

Countershaft Assembly (Continued)

Ref. No.	Part No.	Qty.	Description
44	65-6903	1	Seal Strip – Cover
45	93-1448	1	Bracket ASM – Cover
46	321-3	2	Screw-HH
47	3256-22	2	Washer-Flat
48	88-7970	1	Clip

Ref. No.	Part No.	Qty.	Description

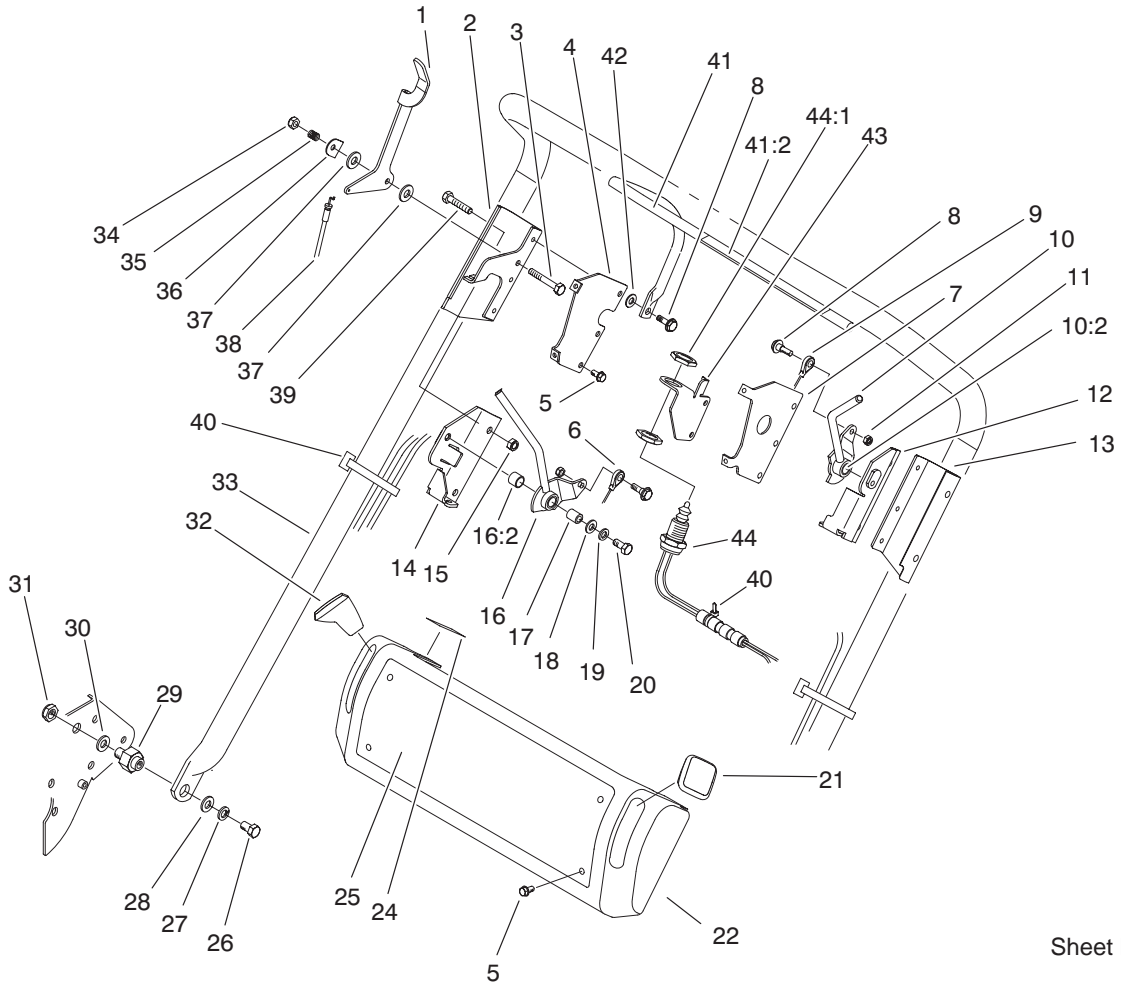


Sheet No.: 8

Engine and Bellcrank Assembly

Ref. No.	Part No.	Qty.	Description
1	94-9007	1	Bellcrank Cover ASM
1:2	84-7280	1	Decal-Danger (Japan)
1:2	93-7273	1	Decal-Danger
2	93-6074	1	Stud - 1/4 Turn, Phillips
3	3256-2	1	Washer-Flat
4	93-6073	1	Retainer
5	323-4	2	Screw-HH
6	3253-21	2	Washer-Lock
7	94-5860	1	Module - Interlock (only on: 04060)
7	94-3431	1	Module-Interlock (Europe) (only on: 04060te)
8	93-6014	1	Lever ASM
8:1	302-5	1	Fitting-Lube
8:2	65-8770	2	Bushing - Bellcrank
9	3296-42	4	Nut-Lock
10	93-6011	1	Spring-Torsion
11	11-9030	3	Screw-Shoulder
12	87-5490	1	Switch-Clutch
12:1	3218-20	2	Nut-Jam
13	93-6015	1	Clutch Bracket ASM
13:1	302-5	1	Fitting-Lube
13:2	65-8770	2	Bushing - Bellcrank
16	2412-93	1	R-Clamp

Ref. No.	Part No.	Qty.	Description
17	3255-9	2	Washer-Lock/Ext
18	33114-016	7	Screw-HH
19	94-5862	1	Wire Harness - Module (only on: 04060)
19	94-5865	1	Harness-Wire (Europe) (only on: 04060te)
20	104-0525	1	Engine ASM
20:2	83-2560	1	Decal-Hot Surface (Japan)
20:2	93-8069	1	Decal-Hot Surface
20:3	93-7348	1	Decal-Danger
20:3	92-4813	1	Decal-Danger (Japan)
20:4	93-9886	1	Decal-Fuel
21	322-9	4	Screw-HH
22	3256-56	10	Washer-Flat
23	88-7960	1	Bracket - Throttle Cable
24	321-3	1	Screw-HH
25	32144-73	1	Screw-HWH
26	3296-29	4	Nut-Lock, NI
27	93-6099	1	Washer
28	93-6012	1	Spring-Torque, Clutch Lever
29	93-6013-03	1	Shield - Belt

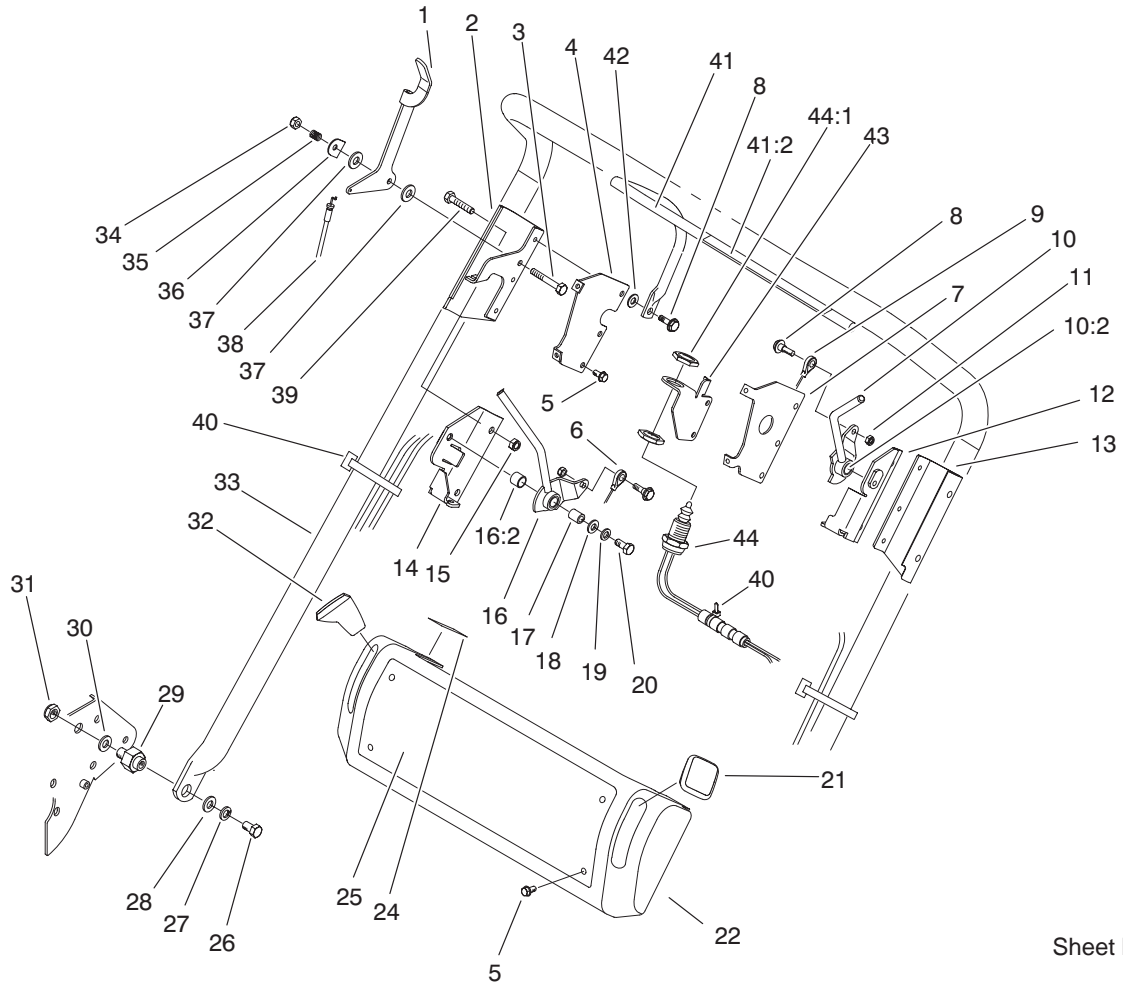


Sheet No.: 9

Handle Assembly

Ref. No.	Part No.	Qty.	Description
1	93-6017	1	Lever-Throttle
2	95-0908-03	1	Bracket - Skid Clutch
3	321-8	1	Screw-HH
4	93-6046-03	1	Bracket - Console, RH
5	93-6083	10	Screw-HWH (only on: 04060)
5	93-6083	8	Screw-HWH (only on: 04060te)
6	94-5870	1	Cable ASM - Clutch
7	93-6047-03	1	Bracket - Console, LH
8	11-9030	4	Screw-Shoulder (only on: 04060te)
8	11-9030	2	Screw-Shoulder (only on: 04060)
9	94-5871	1	Cable ASM - Brake
10	93-6058	1	Brake Lever ASM
10:2	256-206	1	Bushing
11	3296-42	2	Nut-Lock
12	93-6022	1	Bracket-Brake
13	95-0907-03	1	Bracket - Skid Brake
14	93-6019	1	Bracket
15	3296-29	4	Nut-Lock, NI
16	95-5715	1	Clutch Lever ASM
16:2	256-206	1	Bushing
17	88-7450	2	Spacer - Control Lever

Ref. No.	Part No.	Qty.	Description
18	3256-23	2	Washer- Flat
19	3253-4	2	Washer
20	3210-7	2	Screw-HH
21	65-8971	1	Shift Knob
22	93-6036	1	Cover - Console
24	93-6085	1	Decal - Throttle
25	104-0512	1	Decal-Console (only on: 04060)
25	94-6313	1	Decal-Console (Europe) (only on: 04060te)
25	94-6312	1	Decal-Console (Japan)
26	323-34	2	Screw-HH
27	3253-21	2	Washer-Lock
28	3256-24	2	Washer-Flat
29	93-6000	2	Pin Handle, Pivot
30	94-5868	2	Washer
31	3296-28	2	Nut-Lock NI
32	65-8970	1	Shift Knob - Black
33	93-9044	1	Handle
34	3296-56	1	Nut-Lock, NI
35	3-5787	1	Spring-Compression
36	93-6016	1	Washer-Retaining
37	66-2921	2	Washer-Friction, Throttle

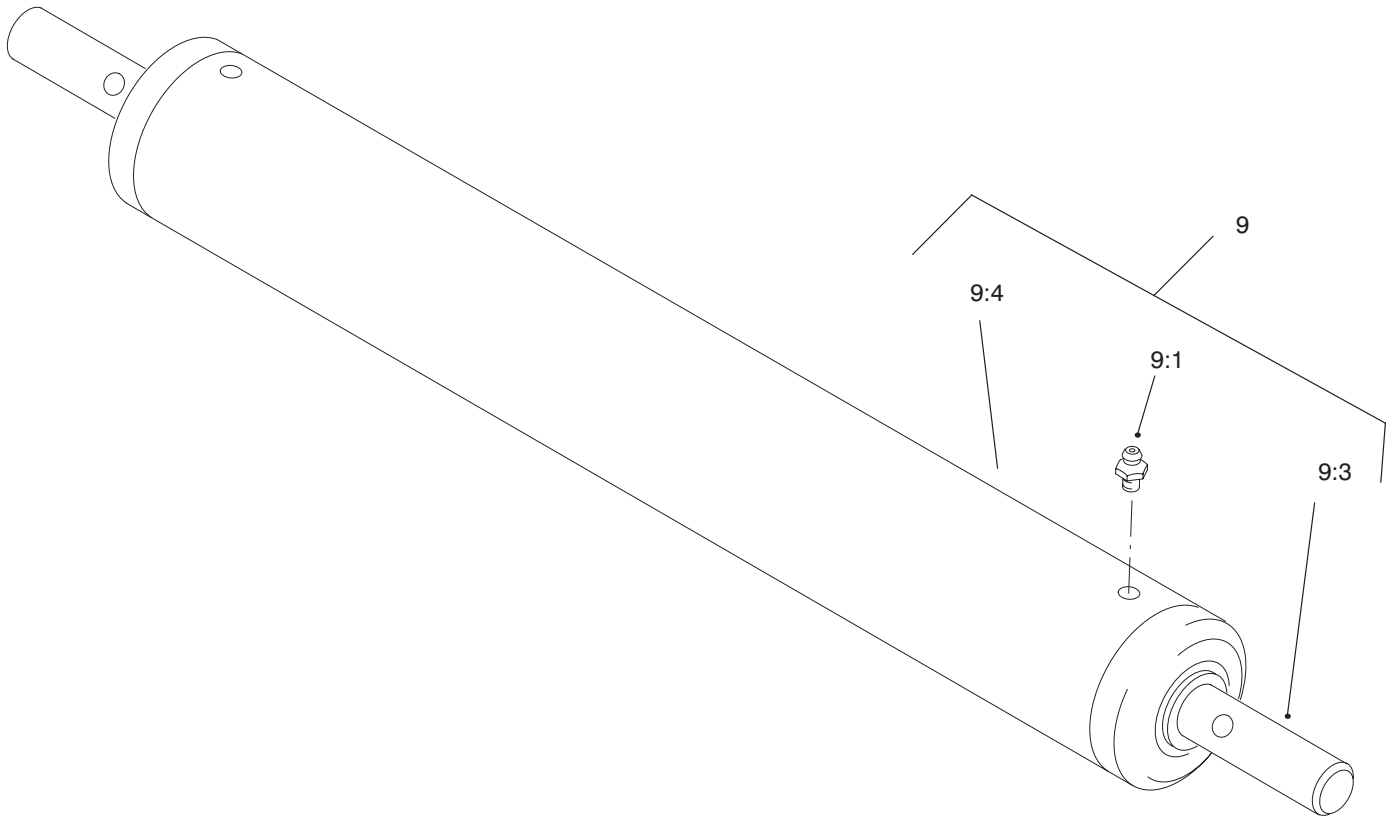


Sheet No.: 9

Handle Assembly (Continued)

Ref. No.	Part No.	Qty.	Description
38	94-5869	1	Cable – Throttle ASM
39	322-9	4	Screw-HH
40	3290-378	4	Tie-Cable (only on: 04060te)
40	3290-378	2	Tie-Cable (only on: 04060)
41	93-9009	1	Bail ASM (only on: 04060te)
41:2	93-9008	1	Decal-Bail Operation (only on: 04060te)
42	93-6079	2	Spacer (only on: 04060te)
43	93-6078-03	1	Bracket – Switch (only on: 04060te)
44	87-5490	1	Switch-Clutch (only on: 04060te)
44:1	3218-20	2	Nut-Jam (only on: 04060te)

Ref. No.	Part No.	Qty.	Description



Sheet No.: 11

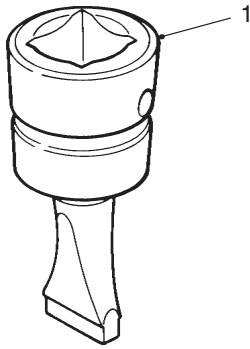
Full Roller Assembly

Ref. No.	Part No.	Qty.	Description
9	95-0930	1	Roller ASM - Full
9:1	302-5	2	Fitting-Lube
9:3	52-3180	2	Bearing-Front Roller
9:4	95-0918	1	Roller Tube ASM *B

Ref. No.	Part No.	Qty.	Description

SPECIAL TOOLS

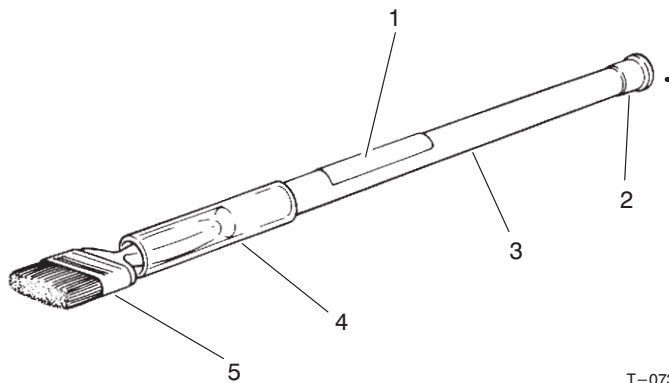
BEDKNIFE SCREW TOOL NO. *TOR510880



T-0729

Ref. No.	Part No.	Description	No. Used
1		Tool-Bedknife Screw	1

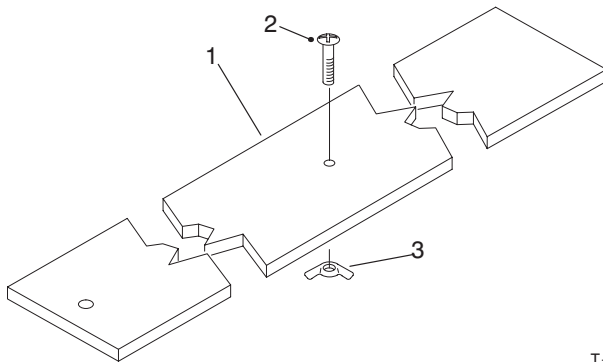
BACKLAPPING BRUSH ASSEMBLY NO. *TOR299100



T-0731

Ref. No.	Part No.	Description	No. Used
1	12-9140	Decal	1
2	2410-18	Plug	1
3	29-9080	Handle	1
4	29-9090	Hose-Handle	1
5	36-4310	Brush	1

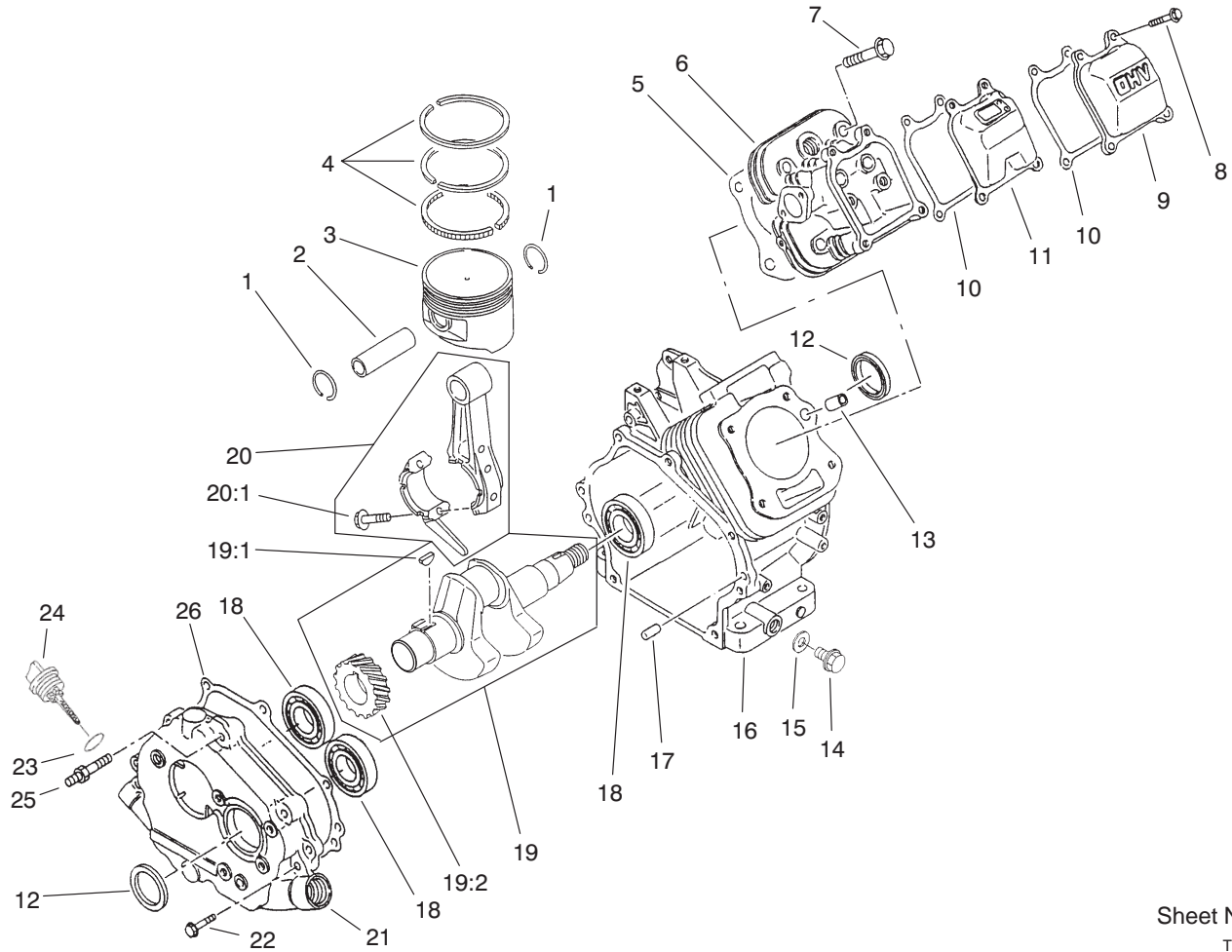
HEIGHT-OF-CUT BAR ASSEMBLY NO. 94-9010



T-2416

Ref. No.	Part No.	Description	No. Used
1	94-9011	Bar	1
2	32122-36	Screw-Truss Hd.	1
3	32103-2	Nut-Wing	1

*Obtain these items directly from OTC 2013 4th St. Owatonna, MN. 55060 1-800-533-0492
(in Minnesota and Canada 1-507-455-7050) Fax. 507-455-7011.

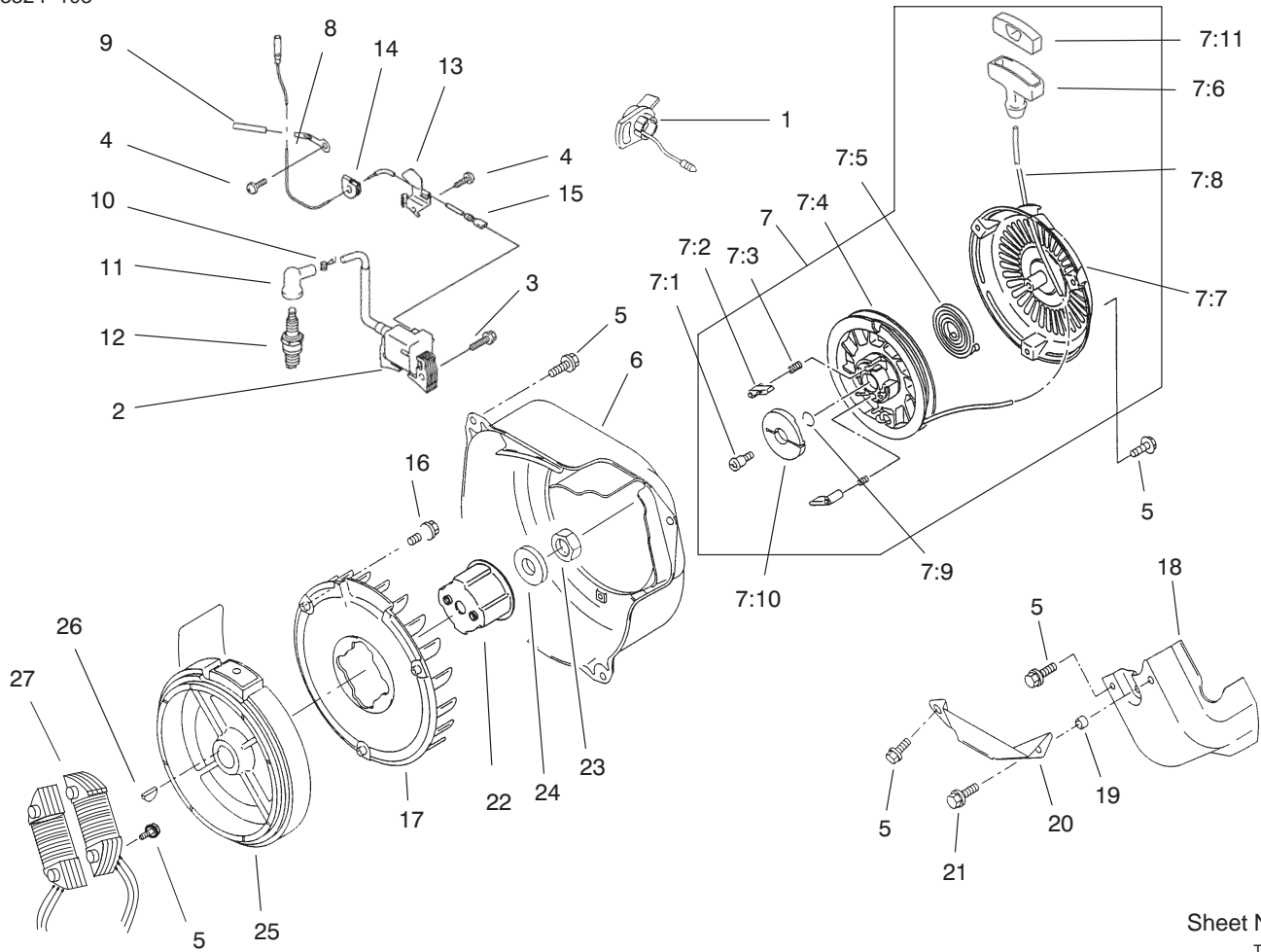


Sheet No.:50
T-3472

Engine Crankcase Assembly

Ref. No.	Part No.	Qty.	Description
1	93-8500	2	Ring – Retaining
2	93-8501	1	Pin – Piston
3	93-8502	1	Piston
3	94-6836	1	Piston – 0.5 O/S
4	93-8503	1	Piston Ring Set
4	94-6837	1	Piston Ring Set – .05mm
5	93-8504	1	Gasket Head
6	93-8505	1	Head–Cylinder
7	93-8506	4	Bolt–Flanged
8	94-6838	4	Bolt – Flanged
9	93-8508	1	Case–Rocker
10	93-8509	2	Gasket–Rocker
11	93-8510	1	Breather
12	93-8511	2	Seal–Oil
13	93-8512	2	Pin
14	93-8513	2	Plug–Drain
15	93-8514	2	Gasket–Drain Plug
16	93-8515	1	Crankcase
17	93-8516	2	Pin
18	93-8517	2	Bearing–Ball
19	93-8518	1	Crankshaft ASM
19:1	93-8526	1	Key
19:2	94-9043	1	Gear – Helical
20	93-8528	1	Connecting Rod ASM
20:1	93-8527	2	Bolt–Rod

Ref. No.	Part No.	Qty.	Description
21	93-8520	1	Cover–Crankcase
22	93-8521	7	Bolt–Flanged
23	94-9041	2	Seal – O–Ring
24	93-8523	2	Cap–Oil–Filter
25	93-8524	1	Stud
26	93-8525	1	Gasket–Crankcase

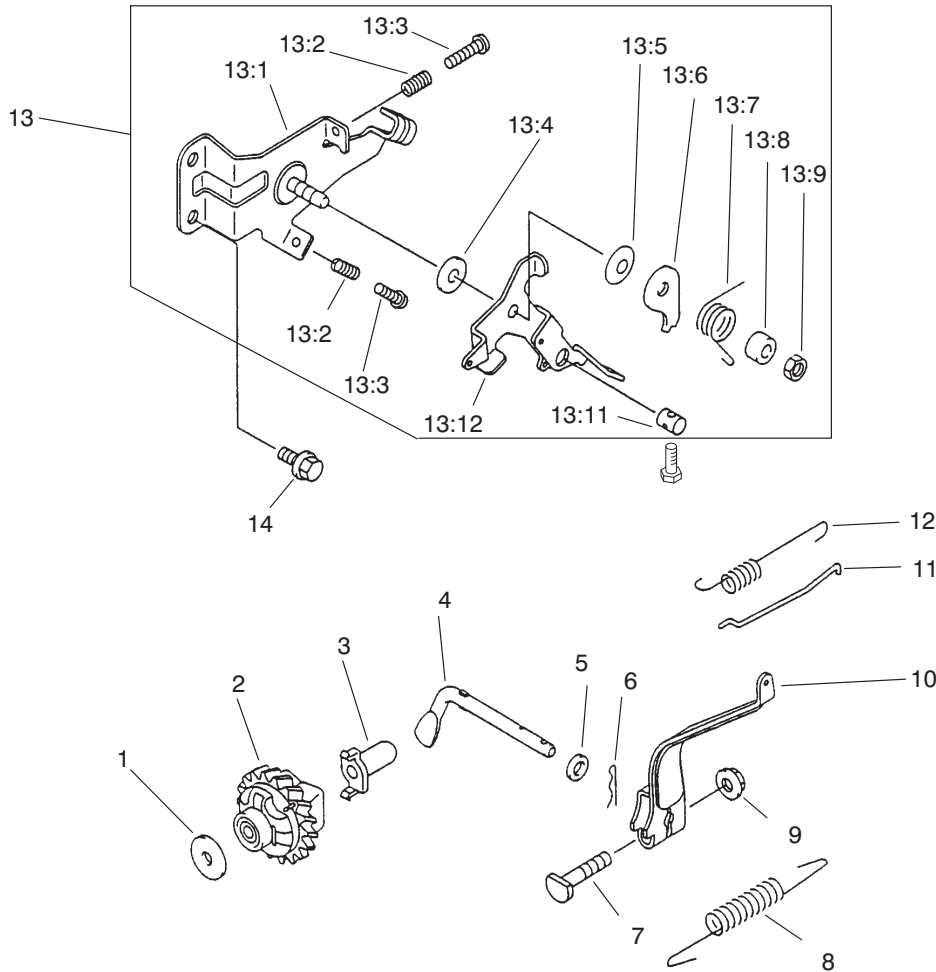


Sheet No.:52
T-3465

Engine Ignition Assembly

Ref. No.	Part No.	Qty.	Description
1	93-8546	1	Switch
2	94-9031	1	Ignition Coil ASM
3	93-8548	6	Bolt-Flanged
4	93-8549	2	Screw
5	93-8550	10	Bolt-Flanged
6	94-9047	1	Housing - Fan
7	93-8552	1	Recoil Starter ASM
7:1	93-8553	1	Screw
7:2	93-8554	2	Pawl-Recoil
7:3	93-8555	2	Spring-Return
7:4	93-8556	1	Reel-Recoil
7:5	93-8557	1	Spring
7:6	94-9045	1	Grip - Recoil Starter
7:7	94-9046	1	Case - Recoil
7:8	93-8560	1	Rope
7:9	93-8561	1	Ring-Retaining
7:10	93-8562	1	Guide-Pawl
7:11	94-9044	1	Cap - Grip
8	94-9039	1	Clamp
9	94-9040	1	Tube
10	94-9049	1	Spring-Terminal
11	93-8585	1	Cap-Spark Plug
12	93-8584	1	Spark Plug
13	93-8583	1	Clamp
14	93-8582	1	Grommet
15	94-9038	1	Wire - Lead

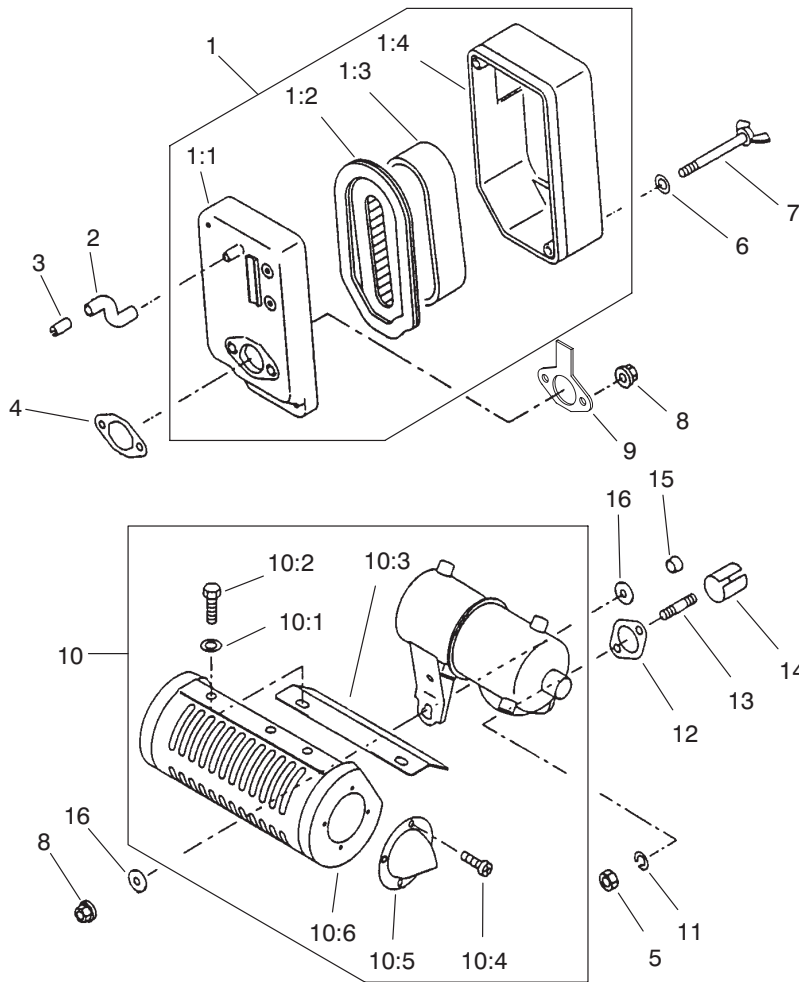
Ref. No.	Part No.	Qty.	Description
16	94-6840	3	Bolt - Flanged
17	93-8572	1	Fan
18	93-8563	1	Shroud-Engine
19	93-8564	1	Collar
20	93-8565	1	Shroud-Engine
21	93-8566	1	Bolt-Flanged
22	93-8567	1	Pulley-Recoil
23	93-8568	1	Nut
24	93-8569	1	Washer
25	99-6237	1	Flywheel ASM
26	93-8571	1	Key
27	99-4267	1	Coil-Lighting



Sheet No.:53
T-3474

Engine Governor Assembly

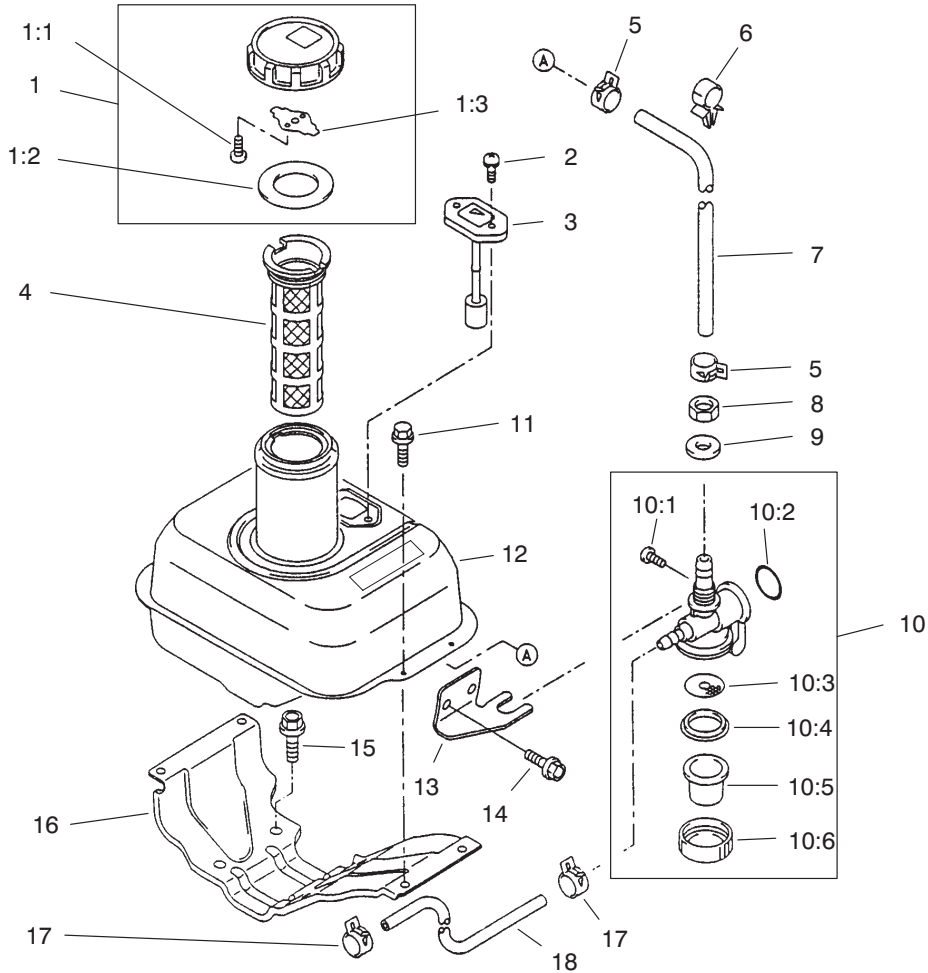
Ref. No.	Part No.	Qty.	Description	Ref. No.	Part No.	Qty.	Description
1	94-6842	1	Washer				
2	94-6841	1	Governor ASM				
3	93-8610	1	Sleeve				
4	93-8609	1	Arm-Pivot				
5	93-8608	1	Washer				
6	93-8607	1	Pin-Snap				
7	93-8606	1	Bolt				
8	94-9030	1	Govenor Spring				
9	93-8631	1	Nut				
10	93-8603	1	Arm-Governor				
11	93-8602	1	Rod-Governor				
12	93-8601	1	Spring				
13	93-8599	1	Control Panel ASM				
13:1	93-8587	1	Panel-Control				
13:2	93-8588	2	Spring				
13:3	93-8589	2	Bolt				
13:4	93-8590	1	Washer				
13:5	93-8591	1	Spring				
13:6	93-8592	1	Plate				
13:7	93-8593	1	Spring				
13:8	93-8594	1	Spacer				
13:9	93-8595	1	Nut				
13:11	93-8597	1	Nut				
13:12	93-8598	1	Lever				
14	93-8600	2	Bolt-Flanged				



Sheet No.:55
T-3476

Engine Air Cleaner and Muffler Assembly

Ref. No.	Part No.	Qty.	Description	Ref. No.	Part No.	Qty.	Description
1	93-8634	1	Air Filter ASM				
1:1	93-8635	1	Case Filter ASM				
1:2	93-8636	1	Element-Air Filter				
1:3	93-8637	1	Element-Air Filter				
1:4	93-8638	1	Cap-Air Filter				
2	93-8659	1	Tube				
3	93-8658	1	Pipe				
4	93-8657	1	Gasket-Air Filter				
5	93-8656	2	Nut-Hex				
6	93-8639	2	Washer				
7	93-8640	2	Bolt				
8	93-8631	3	Nut				
9	93-8642	1	Plate-Air Filter				
10	93-8643	1	Muffler ASM				
10:1	93-8645	4	Washer				
10:2	93-8644	4	Bolt				
10:3	93-8646	1	Cover-Muffler				
10:4	93-8647	4	Screw				
10:5	93-8648	1	Pipe-Tail				
10:6	93-8649	1	Cover-Muffler				
11	93-8655	2	Washer-Spring				
12	93-8654	1	Gasket-Muffler				
13	94-6848	2	Bolt - Stud				
14	93-8652	1	Pipe-Exhaust				
15	93-8651	1	Collar				
16	93-8650	2	Washer				



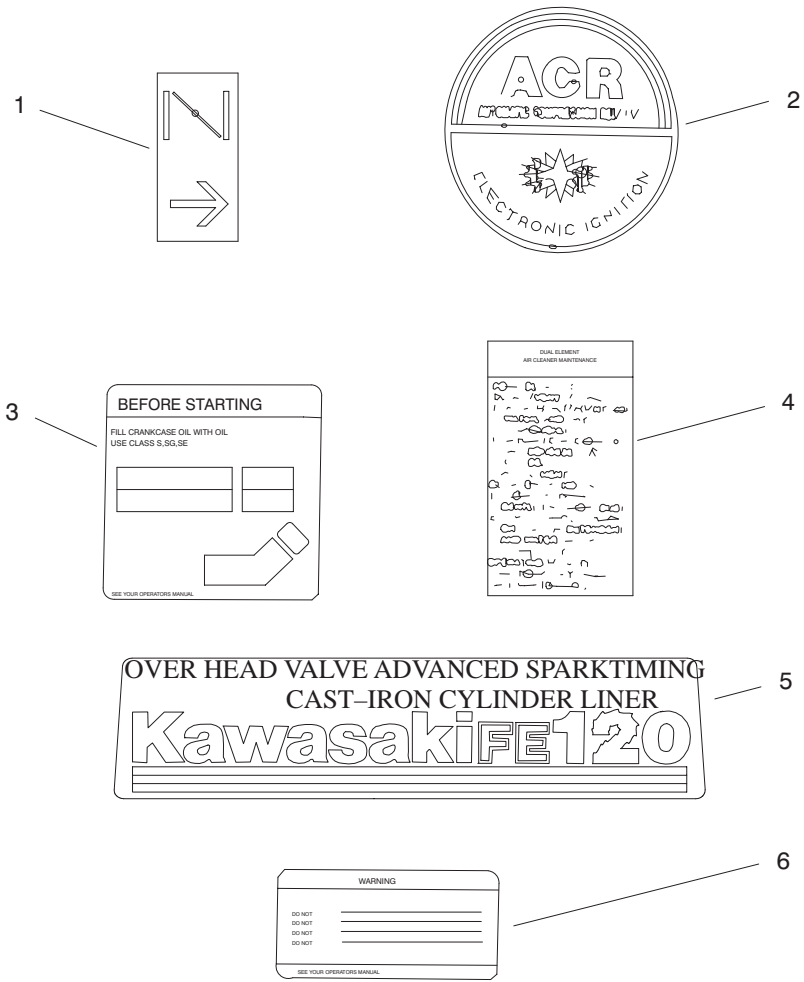
Sheet No.:56

T-3477

Engine Fuel Tank Assembly

Ref. No.	Part No.	Qty.	Description
1	93-8660	1	Fuel Cap ASM
1:1	93-8661	2	Screw
1:2	93-8662	1	Gasket
1:3	93-8663	1	Spring
2	93-8686	2	Screw
3	93-8685	1	Gauge-Fuel
4	94-6826	1	Filter - Fuel
5	93-8664	2	Clamp
6	93-8665	1	Clamp
7	93-8666	1	Tube
8	94-9042	1	Nut
9	93-8668	1	Washer
10	93-8669	1	TAP ASM
10:1	93-8670	1	Screw
10:2	93-8671	1	Seal-O-Ring
10:3	94-6849	1	Filter - TAP
10:4	93-8673	1	Gasket
10:5	93-8674	1	Cup-TAP
10:6	93-8675	1	Nut
11	93-8683	4	Bolt
12	93-8682	1	Tank-Fuel
13	93-8681	1	Bracket
14	93-8680	2	Bolt-Flanged
15	94-6825	4	Bolt - Flanged
16	93-8678	1	Bracket-Tank

Ref. No.	Part No.	Qty.	Description
17	93-8676	2	Clamp
18	93-8677	1	Tube



Sheet No.:57
T-3478

Decals

Ref. No.	Part No.	Qty.	Description
1	93-8687	1	Decal-Choke
2	94-9027	1	Label - Recoil
3	93-8689	1	Decal-Instructions
4	93-8690	1	Decal-Maintenance
5	94-9028	1	Label - Kawasaki
6	93-8692	1	Decal-warning

Ref. No.	Part No.	Qty.	Description

