



**Count on it.**

**Parts Catalog**

**55cm Recycler®**

**Lawn Mower**

Model No. 21763—Serial No. 405559501 and Up



# Ordering Replacement Parts

To order replacement parts, please supply the part number, the quantity, and the description of each part desired.

## Understanding Reference Numbers

Each identified part in an illustration has a reference number. The reference number for a part also appears in the parts list, along with other information about the part.

This catalog uses two special reference number formats, one to indicate parts in a service assembly and another to indicate the quantity of a given part in an illustration.

## Service Assembly Reference Numbers

Parts in service assemblies have reference numbers in the form a:b. The a represents the reference number of the entire service assembly and the b represents a sequential number unique to each part within the service assembly.

For example, a wheel assembly might be identified by reference number 6, the tire by 6:1, the valve by 6:2, and the wheel by 6:3. When you order the assembly identified by reference number 6, you receive all parts identified by reference numbers 6:1, 6:2, and 6:3. However, you may also order any part individually. Reference numbers of this type appear in illustration and in parts lists.

## Reference Numbers Indicating Quantity

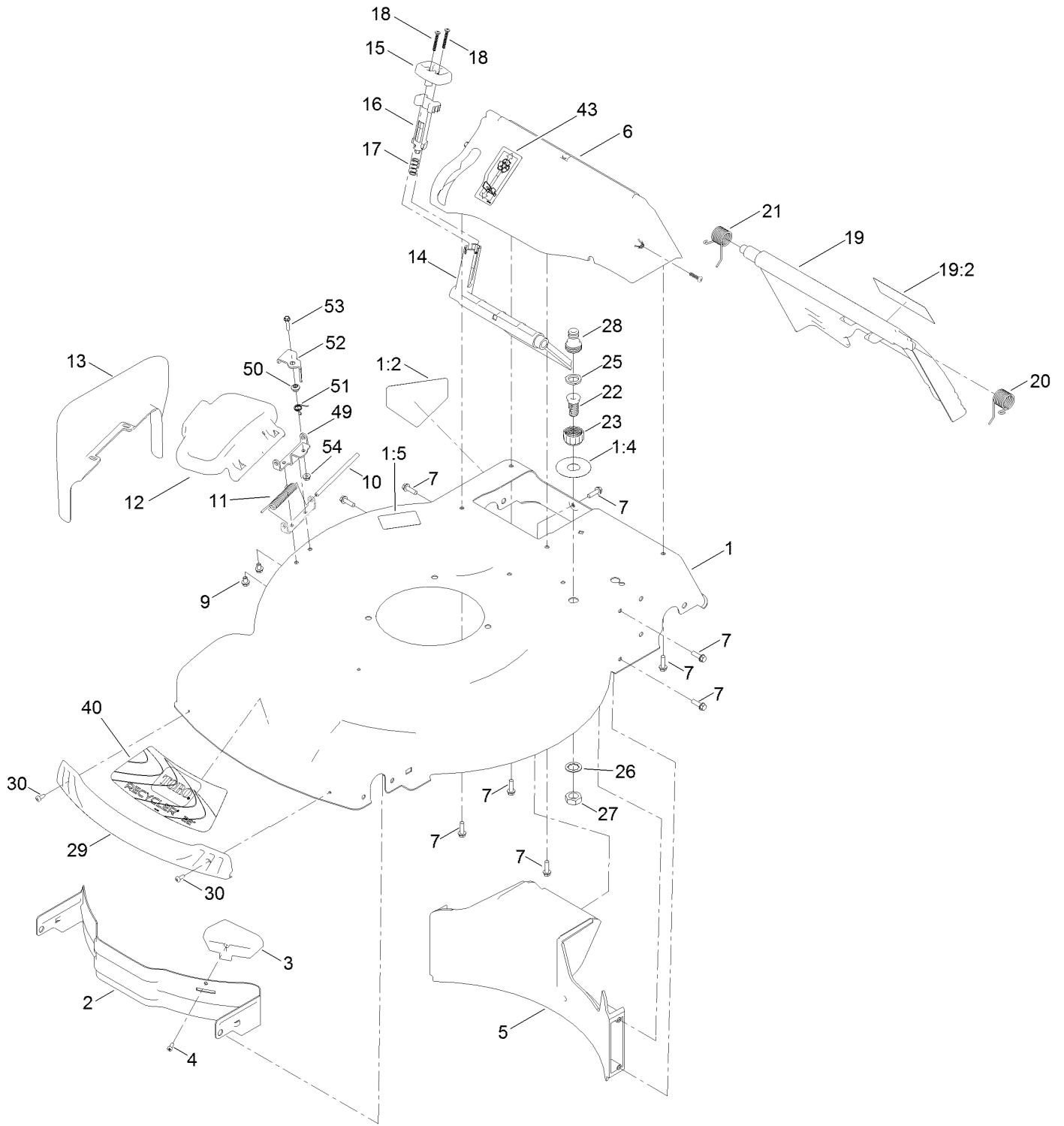
In an illustration, if a reference number indicates more than one part, the reference number has the form nX y. The n represents the quantity of the part, the X is the multiplication symbol, and the y represents the reference number.

For example, in an illustration, the reference number 2X 37 means that two of the parts identified by reference number 37 are indicated.

# Contents

Housing Assembly .....	4
Rear Bag Assembly .....	6
Engine and Blade Assembly .....	8
Front Wheel and Height-of-Cut Assembly .....	10
Transmission and Rear Wheel Assembly .....	12
Handle Assembly .....	14
Electrical Assembly .....	16
Attachments and Accessories .....	18

# Housing Assembly



## Housing Assembly (continued)

<i>Ref.</i>	<i>Part Number</i>	<i>Qty.</i>	<i>Description</i>	<i>Ref.</i>	<i>Part Number</i>	<i>Qty.</i>	<i>Description</i>
1	130-2390	1	Housing ASM	19:2	131-4514	1	Decal-Warning
1:2	112-8760	1	Decal-Danger	20	115-2859	1	Spring-Torsion
1:4	137-9196	1	Decal-Quick Wash	21	114-7924	1	Spring-Torsion
1:5	125-5092	1	Decal-Placement, Foot	22	112-6400	1	Port-Washout
2	115-4667-01	1	Baffle-Front	23	112-6401	1	Coupling-Hose, Washout Port
3	115-4672	1	Kicker-Front	25	112-6438	1	Washer-Seal, Washout Port
4	139-1703	1	Screw-Plastic, PPH	26	139-1721	1	Washer-Lock, Int Tooth
5	139-8982	1	Baffle-Rear	27	3218-6	1	Nut-Jam
6	136-5881	1	Chute-Recycle	28	112-6437	1	Adapter-Connect, Quick
7	137-3099	9	Screw-Plastite, HWH	29	114-7987	1	Bumper
9	137-4795	2	Screw	30	105-6849	2	Screw-Forming, Thread
10	99-5291	1	Rod-Cover	40	120-3324	1	Decal
11	99-5293	1	Spring-Torsion	43	125-5026	1	Decal
12	138-5316	1	Deflector-Discharge, Side	49	138-3293	1	Bracket-Lockout
13	115-8447	1	Chute-Discharge, Side	50	107-7463	1	Spacer
14	114-7960	1	Deflector-Recycle	51	107-7462	1	Spring-Torsion
15	114-7958	1	Knob-Recycle	52	138-3292	1	Lever-Lockout
16	114-7959	1	Latch-Recycle	53	106-9169	1	Screw-HWH
17	117-1031	1	Spring-Compression	54	139-1712	1	Nut-Hex Flange
18	32104-120	2	Screw-PPH				
19	137-9139	1	Rear Door ASM				

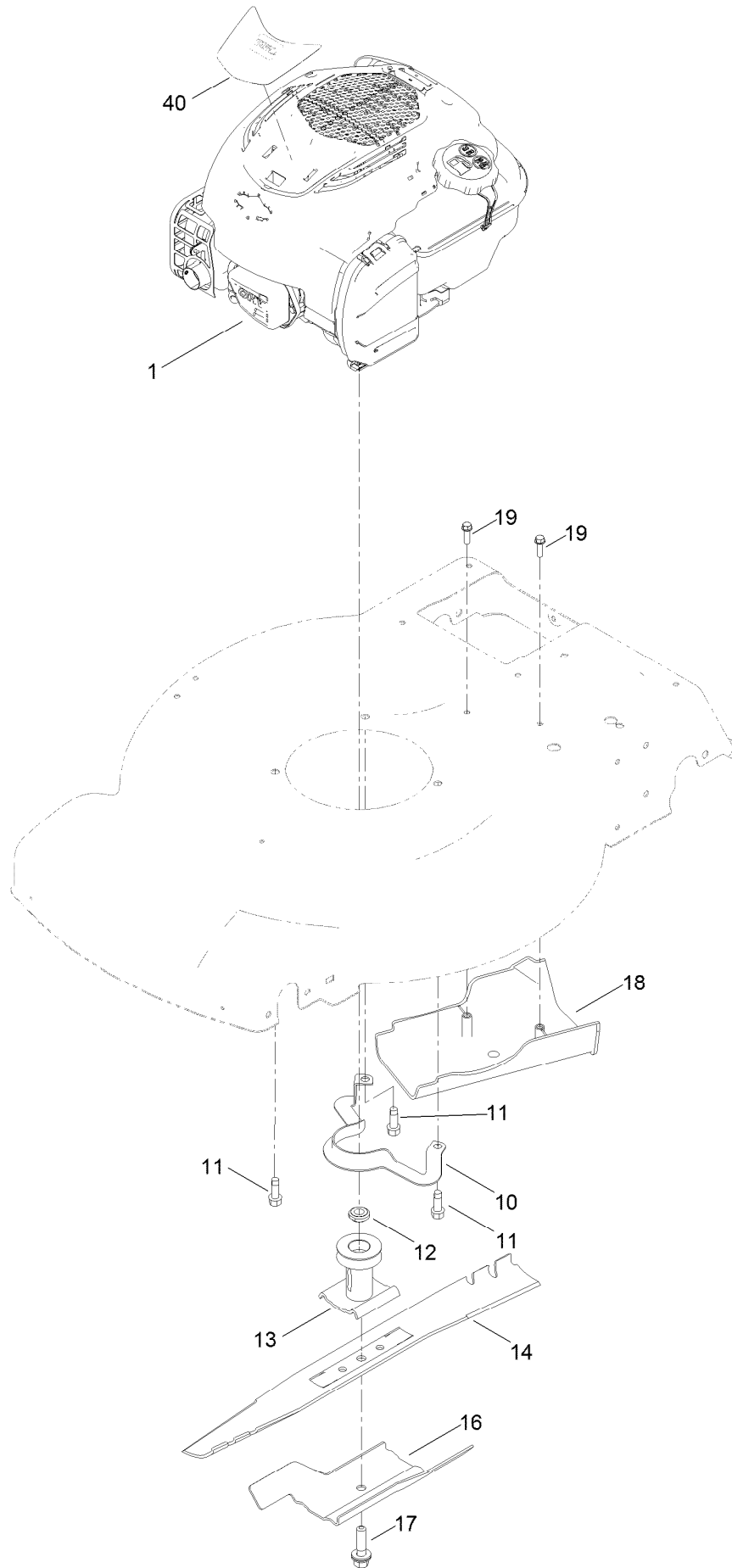
# Rear Bag Assembly



## Rear Bag Assembly (continued)

<i>Ref.</i>	<i>Part Number</i>	<i>Qty.</i>	<i>Description</i>
1	132-4529-03	1	Bag Frame ASM
2	115-4673	1	Grass Bag ASM

# Engine and Blade Assembly





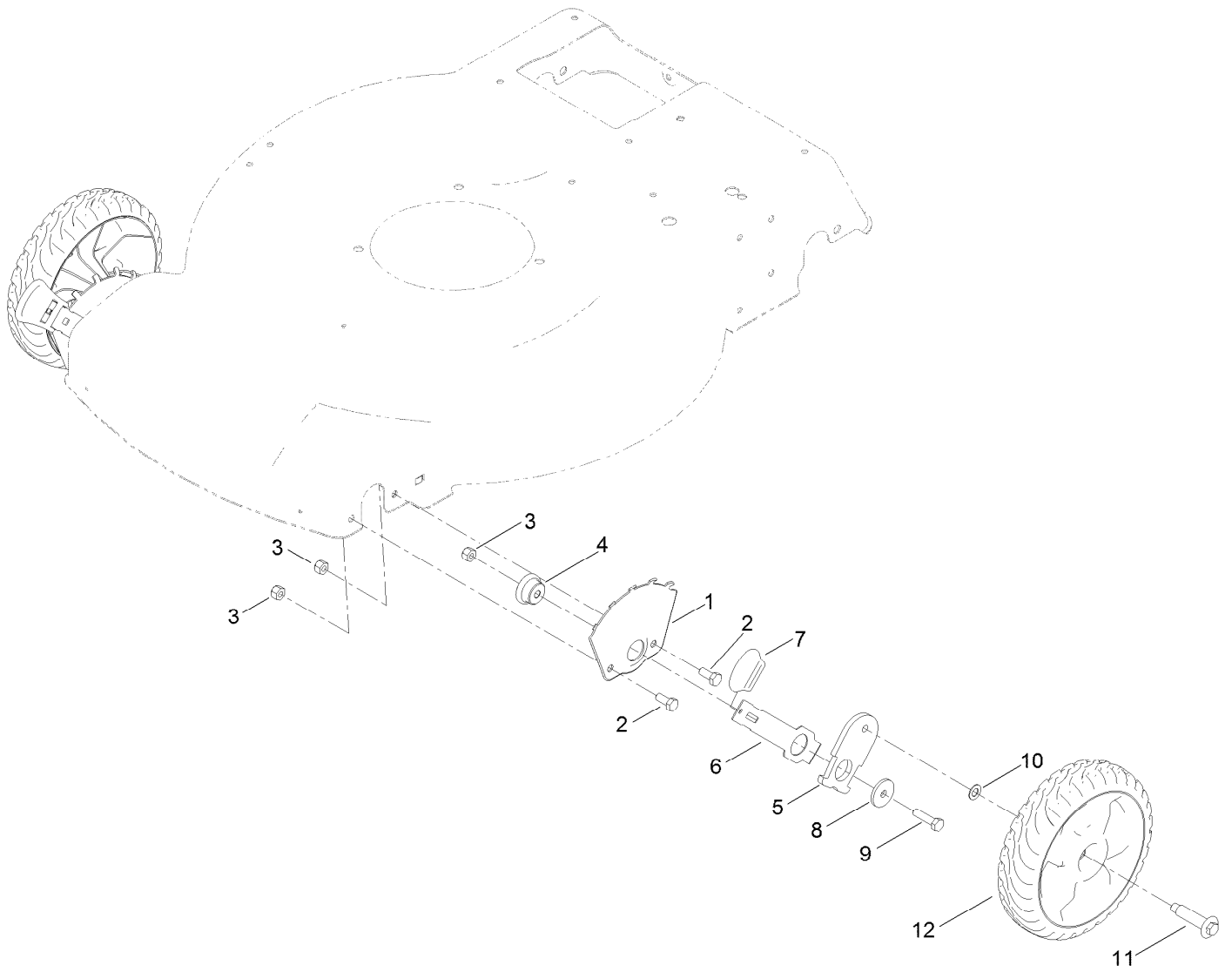
## Engine and Blade Assembly (continued)

<i>Ref.</i>	<i>Part Number</i>	<i>Qty.</i>	<i>Description</i>	<i>Ref.</i>	<i>Part Number</i>	<i>Qty.</i>	<i>Description</i>
1		1	Engine-Briggs 104M050051F1 ●■	14	131-9683-03	1	Blade
10	105-3030-03	1	Guide-Belt	16	105-6848-03	1	Accelerator-Blade
11	95-1726	3	Screw-Taptite	17	125-2466	1	Bolt-Blade
12	106-3999	1	Spacer-Driver	18	114-7937	1	Cover-Belt
13	106-3987	1	Driver-Blade	19	137-3099	2	Screw-Plastite, HWH
				40	132-4472	1	Decal-Shroud

● Not serviced separately

■ Obtain parts from [www.briggsandstratton.com](http://www.briggsandstratton.com)

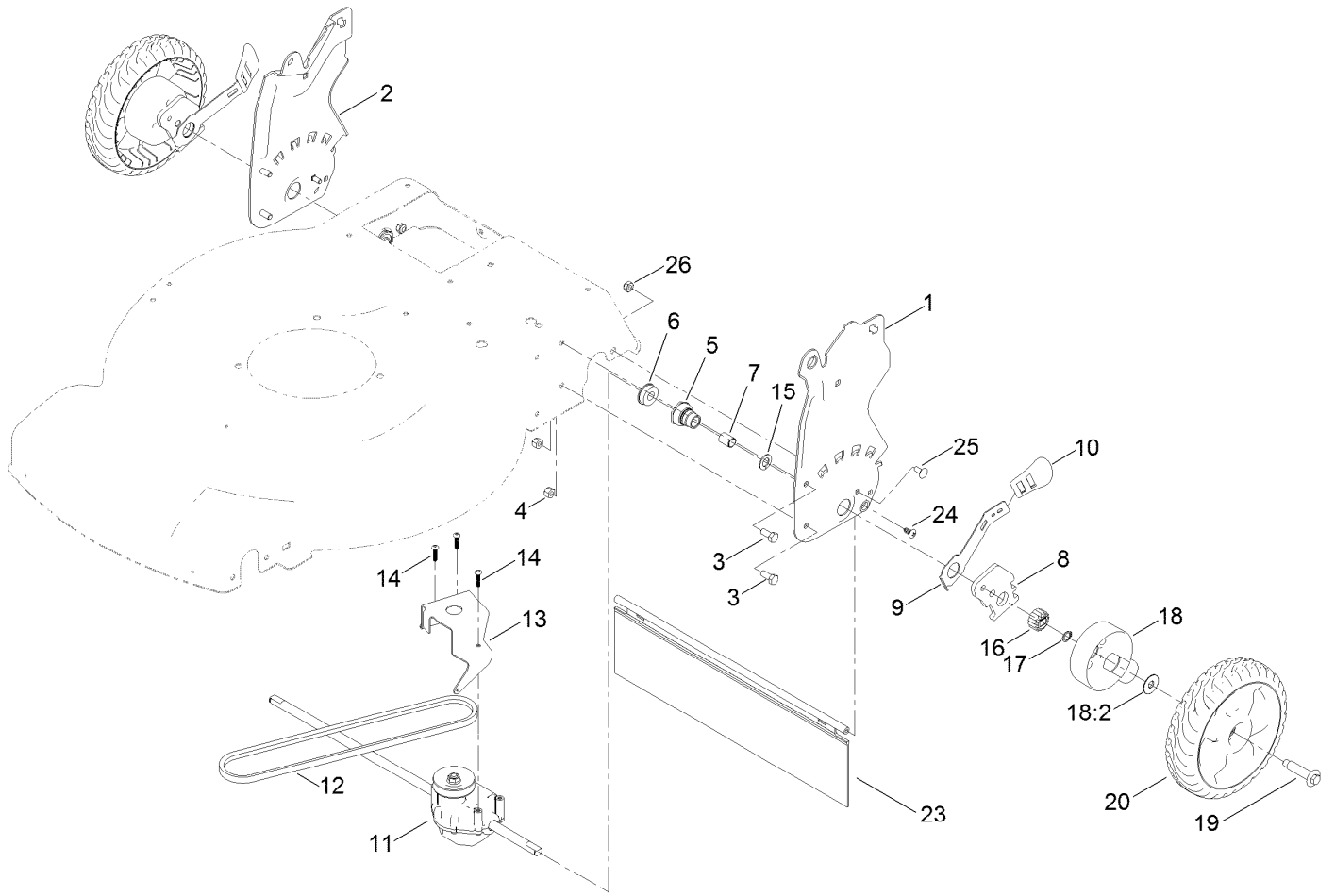
# Front Wheel and Height-of-Cut Assembly



## Front Wheel and Height-of-Cut Assembly (continued)

<i>Ref.</i>	<i>Part Number</i>	<i>Qty.</i>	<i>Description</i>	<i>Ref.</i>	<i>Part Number</i>	<i>Qty.</i>	<i>Description</i>
1	115-1956-03	2	Plate-HOC, Front	7	110-0549	2	Knob-HOC
2	137-3052	4	Screw-HH	8	139-1704	2	Washer-Flat
3	119-4038	6	Nut-Hex	9	120-9696	2	Screw-HH
4	105-1818	2	Bushing-Mount, HOC	10	40-1940	2	Washer
5	137-9128	2	Arm-Pivot, Front	11	614650	2	Bolt-Shoulder
6	105-1809	2	Arm-Spring	12	137-4833	2	8In Wheel ASM

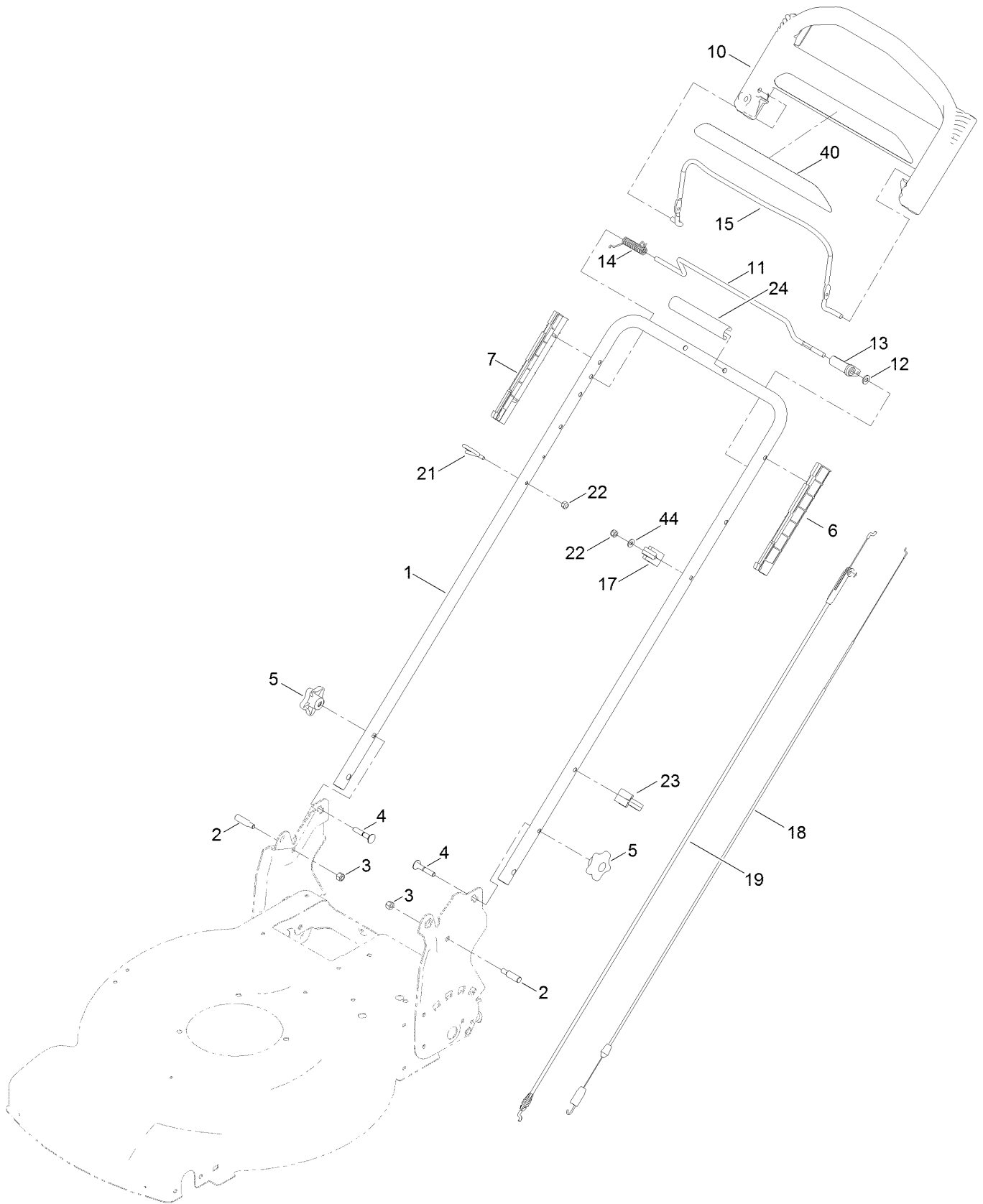
# Transmission and Rear Wheel Assembly



## Transmission and Rear Wheel Assembly (continued)

<i>Ref.</i>	<i>Part Number</i>	<i>Qty.</i>	<i>Description</i>	<i>Ref.</i>	<i>Part Number</i>	<i>Qty.</i>	<i>Description</i>
1	131-9693-03	1	Plate-HOC, LH	14	120-9676	3	Screw-Plastite
2	131-9694-03	1	Plate-HOC, RH	15	110-7191	2	Washer-Thrust
3	137-3052	4	Screw-HH	16	131-5399	2	Gear-Pinion, 15T
4	119-4038	4	Nut-Hex	17	32151-61	2	Ring-Retaining
5	108-9779	2	Retainer-Bushing, HOC	18	136-9059	2	Gear Cover ASM
6	104-8699	2	Bearing-Ball	18:2	614426	1	Washer-Stepped
7	108-9782	2	Bushing-Sleeve	19	614650	2	Bolt-Shoulder
8	136-9090	2	Arm-Pivot, Rear	20	137-4835	2	Wheel Gear ASM, 8In
9	108-9780	2	Arm-Spring	23	139-6604	1	Shield-Trailing
10	110-0549	2	Knob-HOC	24	139-1692	2	Screw-Thd
11	121-9178	1	Transmission ASM	25	100-1445	2	Bolt-CARR
12	115-4669	1	Belt-V	26	139-1724	2	Nut-Lock
13	114-7977-03	1	Bracket-Transmission				

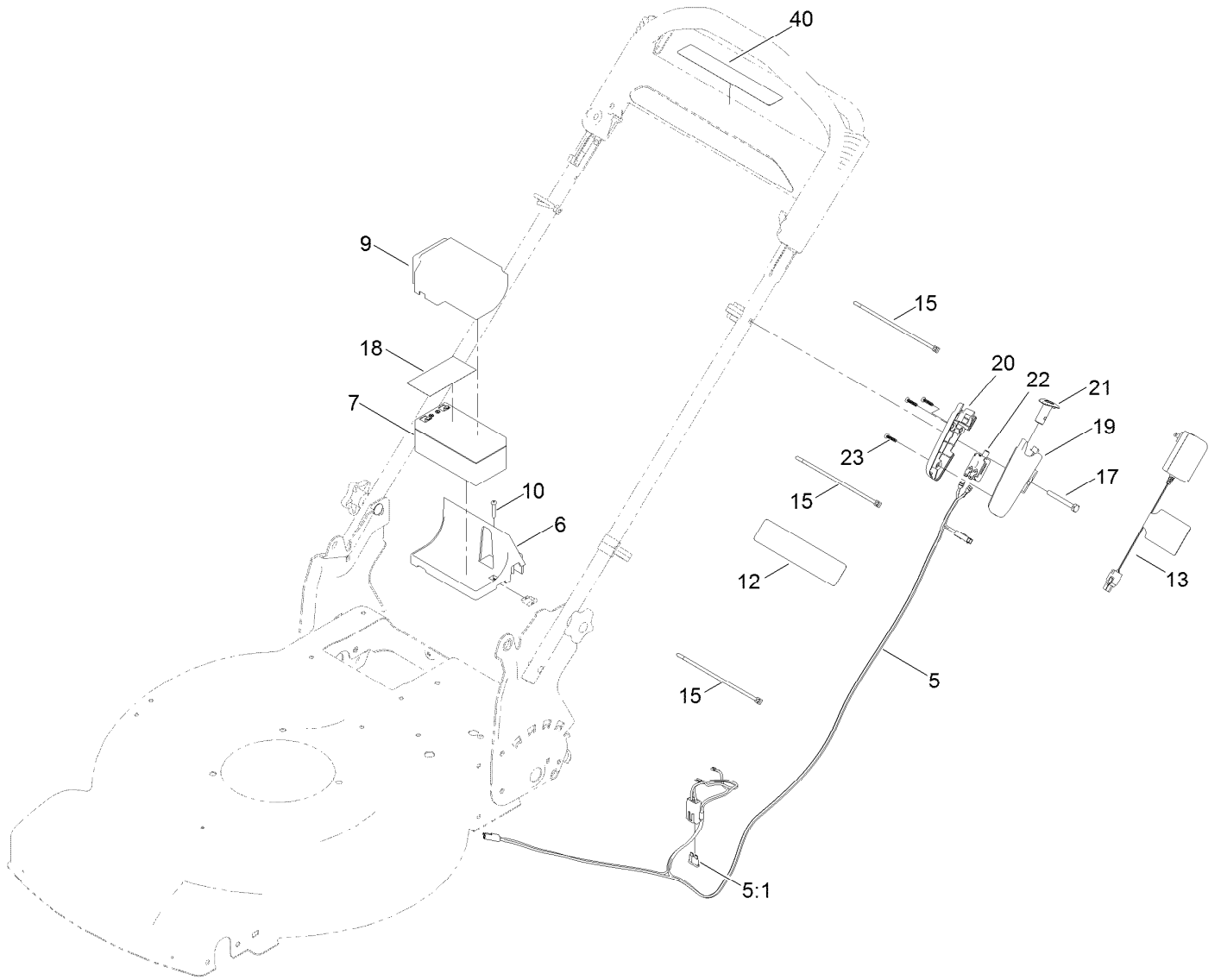
# Handle Assembly



## Handle Assembly (continued)

<i>Ref.</i>	<i>Part Number</i>	<i>Qty.</i>	<i>Description</i>	<i>Ref.</i>	<i>Part Number</i>	<i>Qty.</i>	<i>Description</i>
1	131-9695-05	1	Handle	14	136-7166	1	Spring-Torsion
2	131-4591	2	Bolt-Shoulder	15	131-0880-03	1	Bail-Brake
3	119-4038	2	Nut-Hex	17	136-5864	1	Anchor-Cable
4	131-9663	2	Screw-CARR	18	115-8435	1	Cable-Traction
5	117-5976	2	Knob-Handle	19	115-8437	1	Cable-Brake
6	105-6842	1	Guide-LH	21	86-9671	1	Guide-Rope
7	105-6841	1	Guide-RH	22	137-3094	2	Nut-Hex
10	104-8678	1	Handle-Control	23	114-7988	1	Guide-Cable
11	136-7150	1	Bar-Control, Traction	24	131-4551	1	Cover-Handle
12	120-9683	1	Washer-Plain	40	120-3911	1	Decal-Handle
13	99-1589	1	Lever-Traction	44	139-1699	1	Washer-Flat

# Electrical Assembly





## Electrical Assembly (continued)

<i>Ref.</i>	<i>Part Number</i>	<i>Qty.</i>	<i>Description</i>	<i>Ref.</i>	<i>Part Number</i>	<i>Qty.</i>	<i>Description</i>
5	125-5024	1	Harness-Wire	15	614249	3	Tie-Cable
5:1	99-6124	1	Fuse-40 Amp	17	137-3034	1	Screw-HH
6	114-7936	1	Tray-Battery	18	112-8763	1	Decal-Terminal, Battery
7	106-8397	1	Battery-Wet	19	133-8160	1	Housing-Switch, LH
9	120-3329	1	Cover-Battery	20	133-8161	1	Housing-Switch, RH
10	139-1697	1	Screw-Plastic, PPH	21	125-2470	1	Button-Switch
12	140-4357	1	Decal-Battery Charging	22	121-9173	1	Switch-Push Button
13	137-9153	1	Charger, Battery (12V, CE)	23	94-4496	3	Screw-PPH
13	139-8969	1	Charger, Battery (12V, UK)	40	133-1900	1	Decal-Button, Push

# Attachments and Accessories

## For 21763 55cm Recycler Lawn Mower

<b>Product Name</b>	<b>Model/Part</b>
Traction Assist Handle Kit.....	131-4590
Replacement Drive Belt Kit, 22-inch 2009 and After Rear-Wheel Drive Lawn Mower .....	38991
Lawnmower Cover.....	490-7462
Lawn Striping Kit with 22in Roller.....	20601
Bag-Walk Behind (Toro).....	490-7318
Toro Premium Fuel Treatment 12 Oz Bottle .....	131-6572
4-Cycle Fuel, Snow And Lawn 32oz Can .....	131-3823
Oil-30/10W-30 Synthetic (Quart).....	138-6053
Summer Oil-Case of 24 (20oz Bottles).....	38916
Toro 4-Cycle SAE 30 Oil (32oz Bottle) .....	38903

**Notes:**



**Count on it.**