

# TORO®

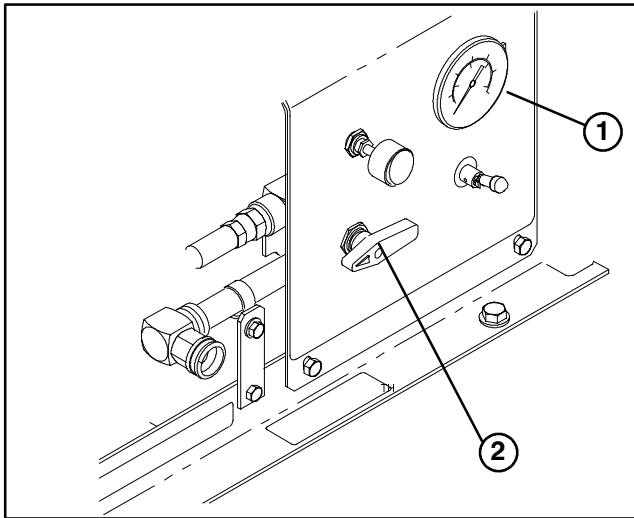
PART NO. 100-9364

## INSTALLATION INSTRUCTIONS

### PRESSURE WASHER PUMP KIT For Workman® 3000 Series

#### Change Fittings

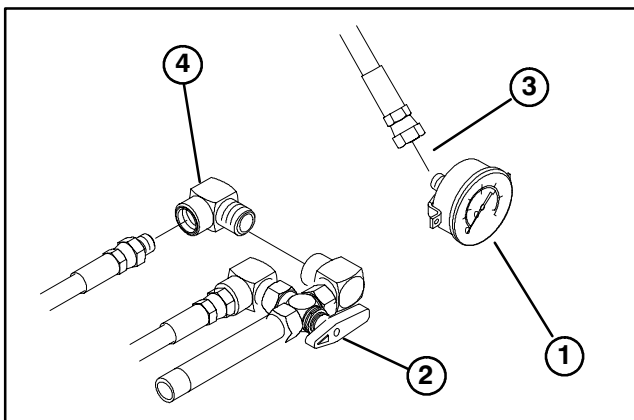
1. Position vehicle / pressure washer on a level surface.
2. Disconnect hose secured to pressure gauge (Fig.1 ).



**Figure 1**

1. Pressure gauge
2. Water selector valve

3. Install 45 degree fitting to hose and loosely re-installed pressure gauge.
4. Disconnect hose and 45 degree fitting secured to 90 degree fitting, connected to right side of selector valve (Fig. 2).



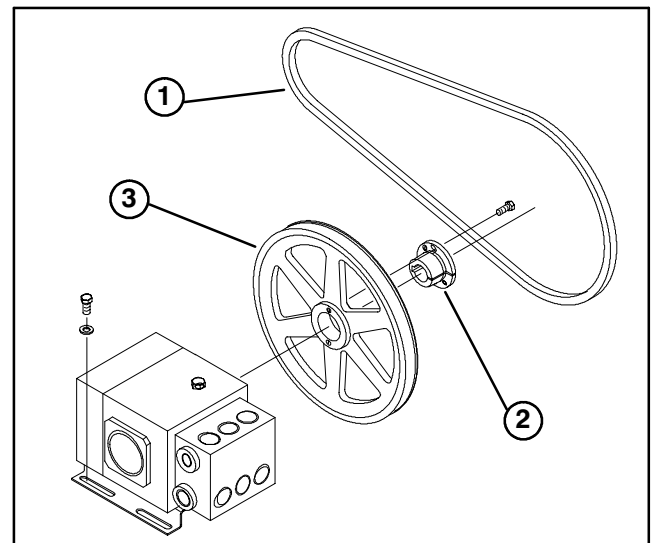
**Figure 2**

1. Pressure gauge
2. Water selector valve
3. Add 45 degree fitting here
4. Change to 45 degree fitting

5. Install 90 degree fitting to hose and loosely re-install to 90 degree fitting.

#### Replace Pump

1. Release belt tension and remove belt from pump pulley.
2. Remove capscrews and taper lock bushing securing pulley to pump. Remove pulley. Discard bushing and capscrews.



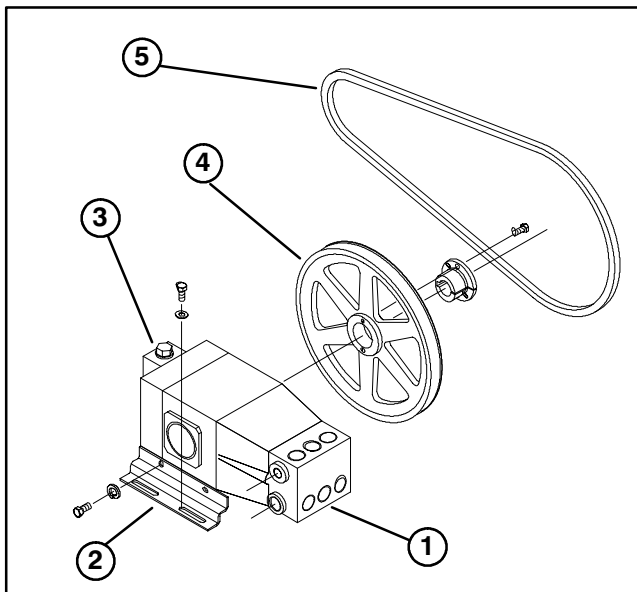
**Figure 3**

1. Belt
2. Taper lock bushing
3. Pulley

3. Disconnect (2) hoses secured to pump.
4. Remove capscrews and washers securing pump to pressure washer frame and remove pump. Retain fasteners.
5. Mount a bracket to each side of new pump with (2) capscrews and washers included in kit. Position brackets as shown in figure 4.
6. Remove fill plug/dipstick from pump and enough SAE 30W motor oil to bring oil up to proper level on dipstick. Install plug.

**IMPORTANT: The oil should be changed after the first 50 hours of operation.**

7. Loosely mount pump to pressure washer frame with capscrews and washers previously removed.



**Figure 4**

- 1. Pump
- 2. Mounting bracket
- 3. Oil fill/dipstick
- 4. Pump pulley
- 5. Belt

**8.** Mount pulley to pump with new taper lock bushing and capscrews supplied in kit.

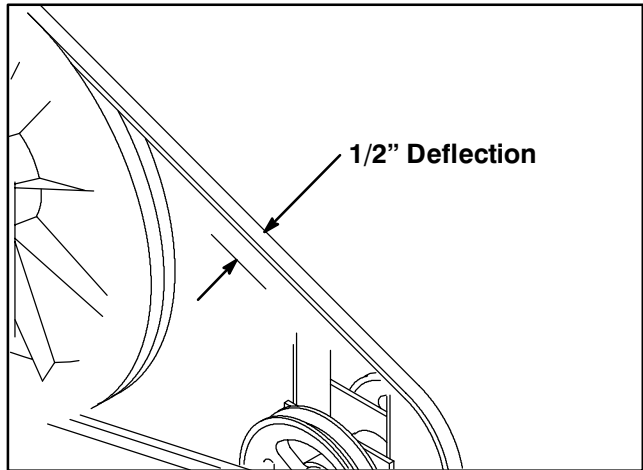
**9.** Re-connect hoses to pump.

**10.** Adjust Drive Belt Tension as follows:

A. The correct tension exists if a deflection of 1/2" occurs by placing 10 lb. of force midway

between the jackshaft pulley and the pump flywheel

B. Loosen (4) capscrews securing pump base to pressure washer frame. Tension belt by adjusting nut on tensioner. After desired belt tension is attained, tighten capscrews.



**Figure 5**

**11.** Tighten hose connections and check to assure all connections are tight. A small leak in any of the hoses or connections will substantially reduce the performance of your pressure washer. Do not overtighten any connections. Use a piece of card board to check for leaks.