



# 120 Volt AC Generator

Workman<sup>®</sup>

Model No. 07403—200000001 and Up

## Parts Catalog

---

### Ordering Replacement Parts

To order replacement parts, please supply: the part number, the quantity, and the description of each part desired.

### Understanding Reference Numbers

Each identified part in an illustration has a reference number. The reference number for a part also appears in the parts list, along with other information about the part.

This catalog uses two special reference number formats, one to indicate parts in a service assembly and another to indicate the quantity of a given part in an illustration.

### Service Assembly Reference Numbers

Parts in service assemblies have reference numbers in the form **a:b**. The **a** represents the reference number of the entire service assembly and the **b** represents a sequential number unique to each part within the service assembly.

For example, a wheel assembly might be identified by reference number **6**, the tire by **6:1**, the valve by **6:2**, and the wheel by **6:3**. When you order the assembly identified by reference number **6**, you receive all parts identified by reference numbers **6:1**, **6:2**, and **6:3**. However, you may also order any part individually.

Reference numbers of this type appear in illustrations and in part lists.

### Reference Numbers Indicating Quantity

In an illustration, if a reference number indicates more than one part, the reference number has the form **nX y**. The **n** represents the quantity of the part, the **X** is the multiplication symbol, and the **y** represents the reference number.

For example, in an illustration, the reference number **2X 37** means that two of the parts identified by reference number **37** are indicated.

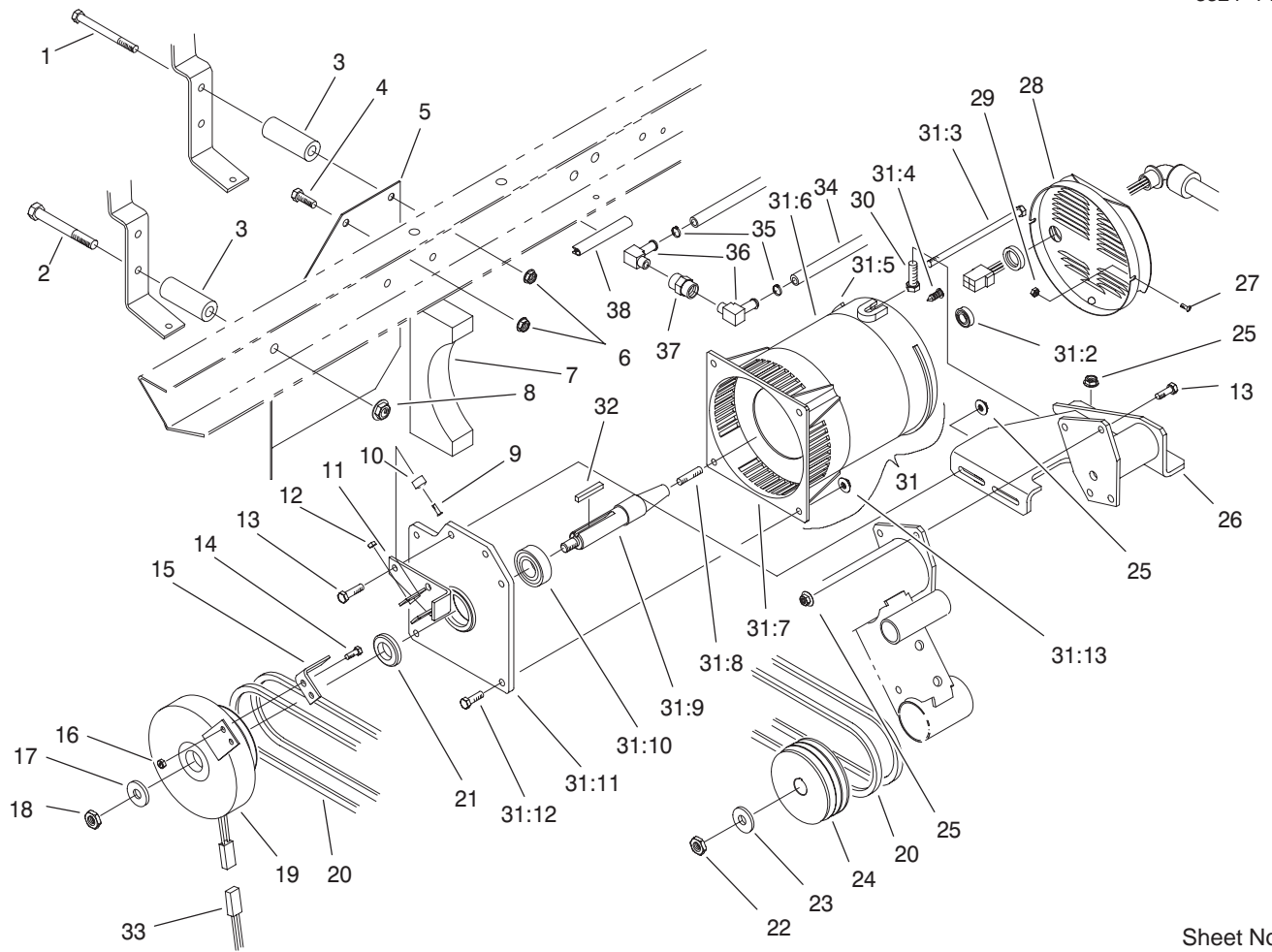
## Contents

<b>Description</b>	<b>Page</b>	<b>Description</b>	<b>Page</b>
Generator Assembly .....	3	Switch and Fuse Block Assembly .....	6
Control Box Frame Assembly .....	4	Air intake Hose Assembly .....	7
Control Box Assembly No. 100-9363 .....	5		

## Part Description Abbreviations

Part descriptions in this catalog may include the following abbreviations.

<b>Abbreviation</b>	<b>Meaning</b>	<b>Abbreviation</b>	<b>Meaning</b>
AR .....	as required	INC .....	incorporated
ASM .....	assembly	LH .....	left hand
CARR .....	carriage	NI .....	nylon insert
DEG .....	degrees	PPH .....	Phillips pan head
FH .....	flat head	PTH .....	Phillips truss head
GA .....	gauge	PTO .....	power take off
HF .....	hex flange	RH .....	right hand
HH .....	hex head	SFH .....	slotted fillister head
HHF .....	hex head flange	SHH .....	slotted hex head
HLH .....	hex lag head	SQH .....	square head
HJ .....	hex jam	SHWH .....	slotted hex washer head
HOC .....	height-of-cut	SPH .....	slotted pan head
HS .....	hex socket	SRH .....	slotted round head
HSBH .....	hex socket button head	STD .....	standard
HSFH .....	hex socket flat head	TAP .....	self tapping
HSH .....	hex socket head	TTH .....	Torx truss head
HWH .....	hex washer head	WH .....	wing head
HWHTF .....	hex washer head thread forming		



Sheet No.:2

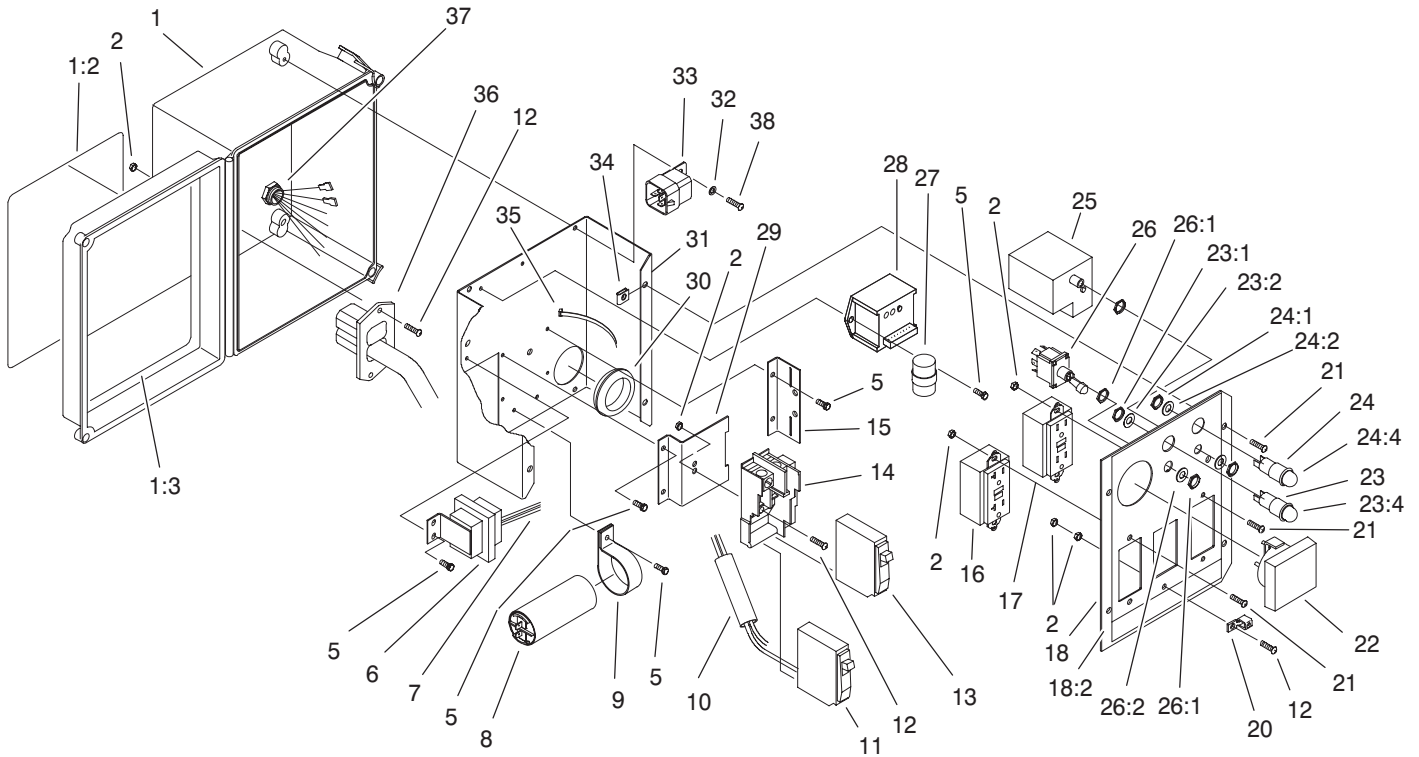
## Generator Assembly

Ref. No.	Part No.	Qty.	Description
1	323-16	2	Screw-HH
2	325-18	2	Screw-HH
3	92-2855	4	Spacer-Tank, Fuel
4	323-4	2	Screw-HH
5	92-2856	1	Shield - Generator
6	3290-357	4	Nut-Flange, Lock
7	92-2857	1	Baffle - Generator
8	32128-23	2	Nut-HF
9	3250-39	2	Screw-PPH
10	66-2910	2	Bumper
11	95-7389	1	Bracket-Bumper
12	3296-9	2	Nut-Lock NI
13	322-6	6	Screw-HH
14	321-4	2	Screw-HH
15	92-2843	1	Tab - Bumper
16	3296-56	2	Nut-Lock, NI
17	92-2651	1	Washer
18	3296-45	1	Nut-Lock, NI
19	92-2627	1	Clutch-Electric
20	92-2845	1	Belts-Matched Set of 2
21	92-2842	1	Spacer - Generator
22	3296-15	1	Nut-Lock NI
23	3256-28	1	Washer-Flat
24	92-2846	1	Pulley-Drive, Fan
25	32128-20	7	Nut-HF
26	92-2833	1	Mount-Generator

Ref. No.	Part No.	Qty.	Description
27	93-7654	2	Screw
28	92-2847	1	Cover-Rear
29	93-7655	2	Nut
30	322-5	1	Screw-HH
31	100-4514	1	Generator ASM
*31:1	3290-379	1	Tie-Cable
31:2	93-3945	1	Bearing - Rear
31:3	92-2898	4	Bolt - Stator
31:4	93-3942	1	Screw - Ground
31:5	92-2899	1	Bracket-Bearing, Rear
31:6	93-3943	1	Cover - Stator
31:7	93-3944	1	Bracket - Fan
31:8	92-2840	1	Screw-Roto
31:9	100-4515	1	Shaft-Rotor Clutch, Generator
31:10	70-9240	1	Bearing
31:11	92-2837	1	Mount-Bearing, Mach
31:12	322-5	4	Screw-HH
31:13	32128-20	4	Nut-HF
32	7-0238	1	Key-Square
33	92-2853	1	Harness-Wire, Main
34	93-3949	1	Hose - Fuel
35	92-2379	2	Clamp-Hose
36	93-3948	2	Fitting - Fuel
37	93-3947	1	Fitting - Coupler
38	43-4300	1	Trim-Frame, Rear

\* Not illustrated



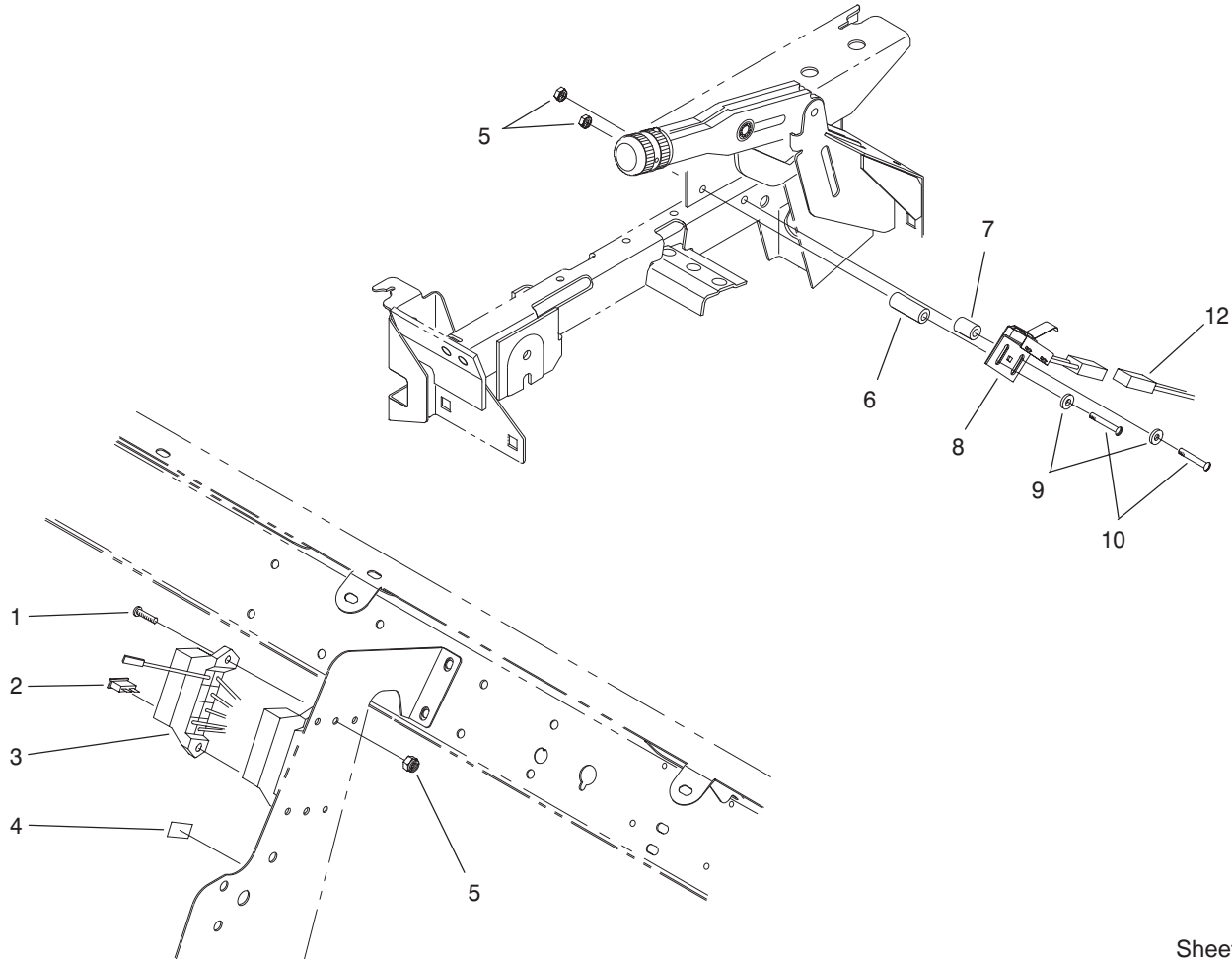


Sheet No.:A1

## Control Box Assembly No. 100-9363

Ref. No.	Part No.	Qty.	Description
1	92-2896	1	Box-Control
1:2	93-3938	1	Decal - Generator
1:3	93-3939	1	Decal - Operation
2	32149-7	10	Nut-Keps
5	32144-42	10	Screw-Selftap
6	92-2883	1	Transformer
7	92-2851	1	Harness-Wire, Trans.
8	92-2873	1	Capacitor
9	92-2874	2	Clamp - Tube
10	92-2872	1	Harness-Wire, Control Box
11	92-2881	1	Breaker-Circuit, 20 Amp
12	3250-13	5	Screw-PPH
13	92-2880	1	Breaker-Circuit, 15 Amp
14	92-2882	1	Base-Mounting
15	92-2866	1	Bracket - Breaker
16	92-2870	1	Outlet - 120v, Gfi 20a
17	92-2871	1	Outlet - 120v, Gfi 15a
18	92-2897	1	Panel-Control
18:2	93-3937	1	Decal-Panel, Control
20	92-2875	1	Lug - Ground
21	3250-12	8	Screw-PPH
22	92-2869	1	Meter - Volt
23	44-2210	1	Light-Indicator, Red

Ref. No.	Part No.	Qty.	Description
23:1	218-535	1	Nut-Hex
23:2	218-536	1	Washer-Lock
*	93-7480	1	Led-Bayonet, Mini.
23:4	218-533	1	Lens
24	44-2212	1	Light-Indicator, Amber
24:1	218-535	1	Nut-Hex
24:2	218-536	1	Washer-Lock
24:4	218-562	1	Lens
25	92-2878	1	Switch - Tattletale
26	85-4980	1	Switch-PTO
26:1	3218-19	2	Nut-HJ
26:2	3254-20	1	Washer-Lock/Int
27	92-2876	1	Delay-Time
28	100-9360	1	Switch-Frequency
29	92-2865	1	Bracket-Breaker, Circuit
30	237-91	1	Grommet
31	92-2864	1	Bracket-Box, Control
32	3254-1	4	Washer-Lock/Int
33	63-7590	1	Relay-Spdt
34	3290-191	4	Nut-Speed
35	3290-379	8	Tie-Cable
36	92-2879	1	Harness-Wire
37	92-2852	1	Harness-Wire, Generator
38	3250-31	4	Screw-PPH



Sheet No.:4

## Switch and Fuse Block Assembly

Ref. No.	Part No.	Qty.	Description
1	3250-13	2	Screw-PPH
2	218-594	1	Fuse-20 Amp
3	92-2641	1	Wire Harness - Fuse Box
4	93-3941	1	Decal - Fuse
5	3296-2	4	Nut-Lock
6	92-2800	1	Spacer - Switch
7	92-2801	1	Spacer - Switch, Short
8	93-3722	1	Switch/Bracket-Brake, Parking
9	3256-14	2	Washer-Flat
10	32105-14	2	Screw-Head, Slotted
12	92-2854	1	Harness-Wire, Pb Switch

Ref. No.	Part No.	Qty.	Description



