



## 44" Snowthrower Dingo® Attachment

Model No. 22456 - 210000001 and Up

### Parts Catalog

---

#### Ordering Replacement Parts

To order replacement parts, please supply: the part number, the quantity, and the description of each part desired.

#### Understanding Reference Numbers

Each identified part in an illustration has a reference number. The reference number for a part also appears in the parts list, along with other information about the part.

This catalog uses two special reference number formats, one to indicate parts in a service assembly and another to indicate the quantity of a given part in an illustration.

#### Service Assembly Reference Numbers

Parts in service assemblies have reference numbers in the form **a:b**. The **a** represents the reference number of the entire service assembly and the **b** represents a sequential number unique to each part within the service assembly.

For example, a wheel assembly might be identified by reference number **6**, the tire by **6:1**, the valve by **6:2**, and the wheel by **6:3**. When you order the assembly identified by reference number **6**, you receive all parts identified by reference numbers **6:1**, **6:2**, and **6:3**. However, you may also order any part individually.

Reference numbers of this type appear in illustrations and in part lists.

#### Reference Numbers Indicating Quantity

In an illustration, if a reference number indicates more than one part, the reference number has the form **nX y**. The **n** represents the quantity of the part, the **X** is the multiplication symbol, and the **y** represents the reference number.

For example, in an illustration, the reference number **2X 37** means that two of the parts identified by reference number **37** are indicated.

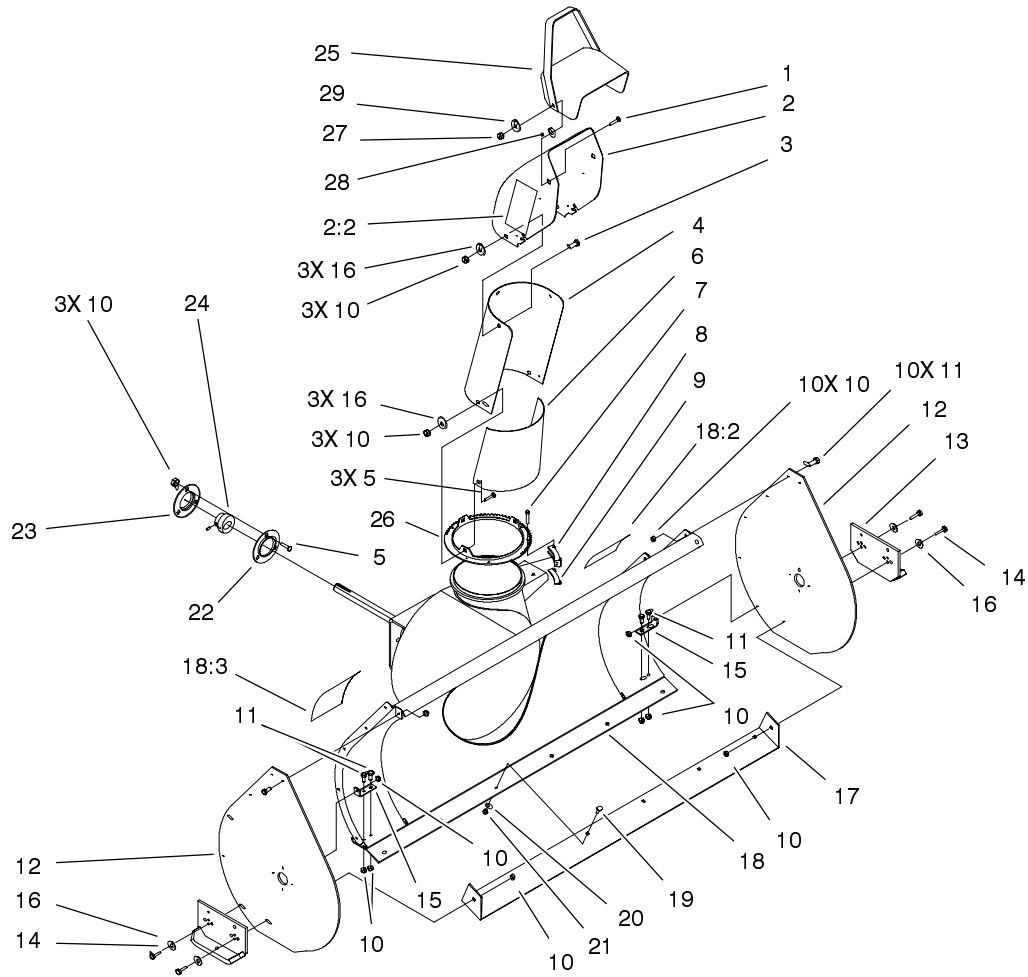
## Contents

<b>Description</b>	<b>Page</b>	<b>Description</b>	<b>Page</b>
Discharge Chute Assembly .....	3	Auger and Gearcase Assembly .....	5
Hydraulic Hose and Pump Assembly .....	4	Crank And Mounting Assembly .....	6

## Part Description Abbreviations

Part descriptions in this catalog may include the following abbreviations.

<b>Abbreviation</b>	<b>Meaning</b>	<b>Abbreviation</b>	<b>Meaning</b>
AR .....	as required	INC .....	incorporated
ASM .....	assembly	LH .....	left hand
CARR .....	carriage	NI .....	nylon insert
DEG .....	degrees	PPH .....	Phillips pan head
FH .....	flat head	PTH .....	Phillips truss head
GA .....	gauge	PTO .....	power take off
HF .....	hex flange	RH .....	right hand
HH .....	hex head	SFH .....	slotted fillister head
HHF .....	hex head flange	SHH .....	slotted hex head
HLH .....	hex lag head	SQH .....	square head
HJ .....	hex jam	SHWH .....	slotted hex washer head
HOC .....	height-of-cut	SPH .....	slotted pan head
HS .....	hex socket	SRH .....	slotted round head
HSBH .....	hex socket button head	STD .....	standard
HSFH .....	hex socket flat head	TAP .....	self tapping
HSH .....	hex socket head	TTH .....	Torx truss head
HWH .....	hex washer head	WH .....	wing head
HWHTF .....	hex washer head thread forming		

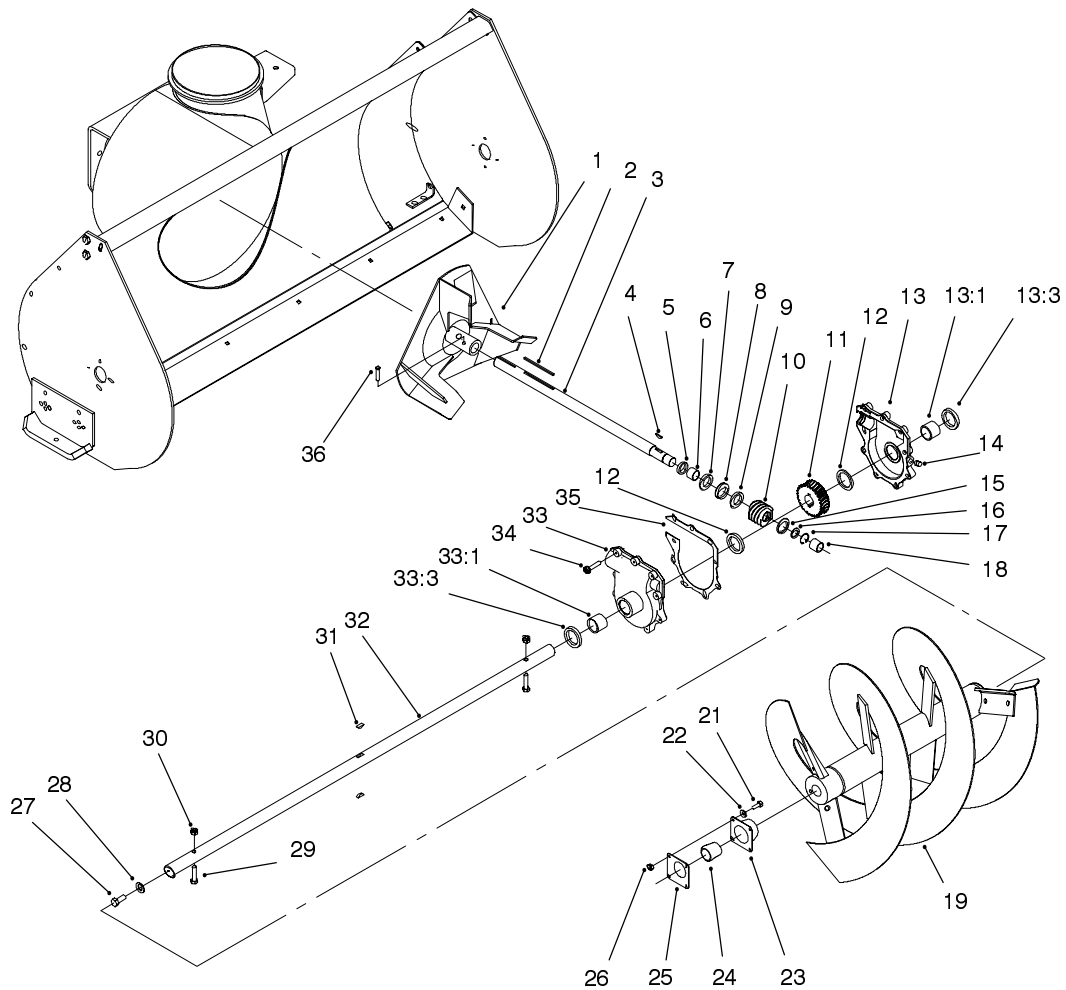


Sheet No.:2

## Discharge Chute Assembly

Ref. No.	Part No.	Qty.	Description	Ref. No.	Part No.	Qty.	Description
1	3231-2	2	Screw-CARR	21	3296-42	6	Nut-Lock, NI
2	100-4623	1	Dischge Chute ASM	22	110568	1	Flange
2:2	93-7309	2	Decal - Danger, Discharge	23	119020	1	Flange-Relube Zerk
3	322-2	3	Screw-HH	24	110569	1	Bearing & Collar
4	26-1110-01	1	Extender-Chute, Upper	25	11-7120-01	1	Deflector
5	3230-1	6	Screw-CARR	26	25-5290-01	1	Ring-Chute, Swivel
6	94-9787-01	1	Shield-Deflector	27	3296-39	2	Nut-Lock, NI
7	100-4628	6	Screw	28	20-4320	2	Washer-Rubber
8	25-5450	3	Retainer-Chute	29	3290-340	2	Washer-Belleville
9	100-4605-03	3	Plate - Chute Retainer				
10	3296-29	27	Nut-Lock				
11	322-3	14	Screw-HH				
12	57-3510-01	2	Plate-Side				
13	100-4600-01	2	Skid ASM				
14	322-47	4	Screw-HH				
15	99-2304-01	2	Bracket-Blade Support				
16	3256-23	10	Washer-Flat				
17	99-2303-01	1	Blade-Scraper				
18	99-6897	1	Housing ASM				
18:2	93-7310	2	Decal - Danger, Auger				
18:3	93-7311	1	Decal - Warning				
19	3229-25	6	Screw-CARR				
20	3256-22	6	Washer-Flat				



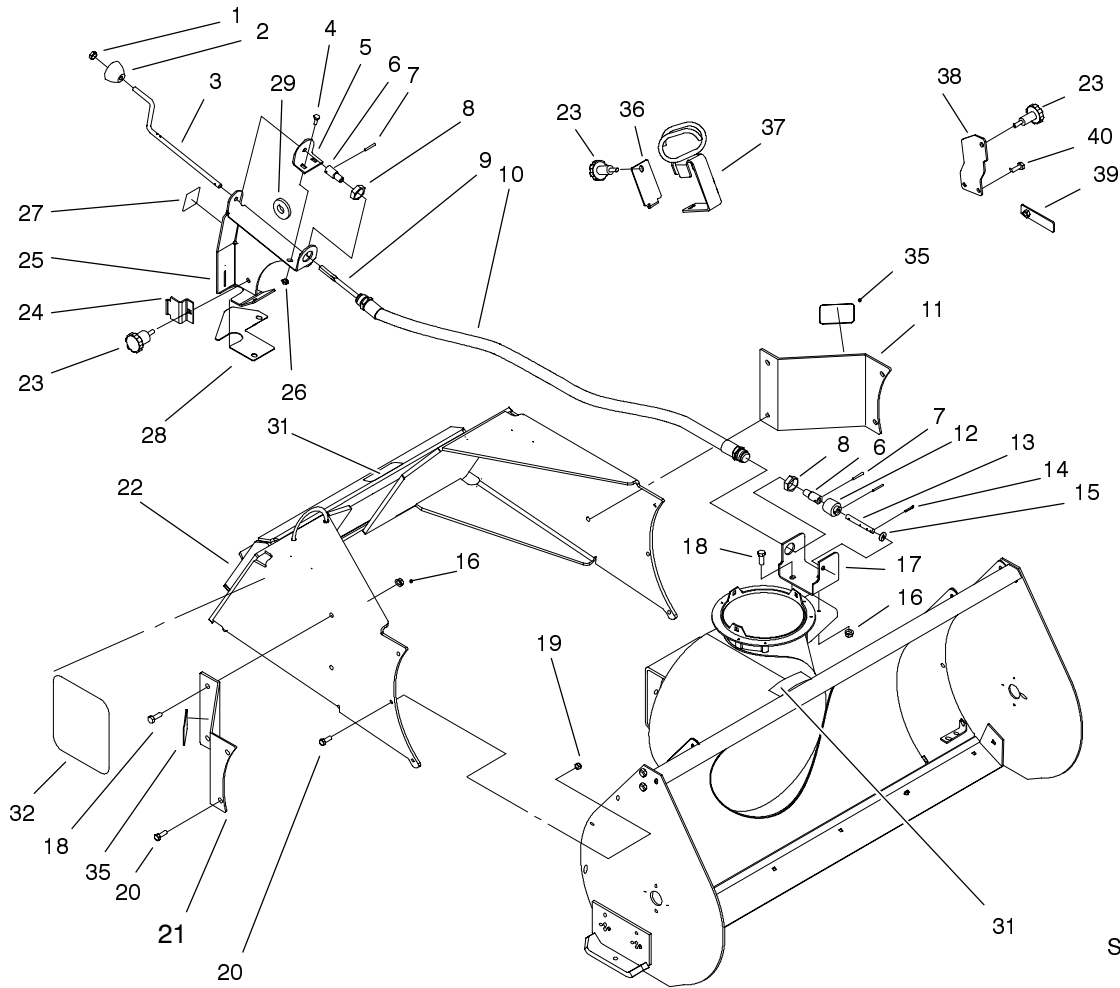


Sheet No.:4

## Auger and Gearcase Assembly

Ref. No.	Part No.	Qty.	Description	Ref. No.	Part No.	Qty.	Description
1	19-8890-01	1	Impeller	24	20-0980	2	Bearing
2	6-8590	1	Key	25	20-1000	2	Bearing-Flange, Rear
3	19-8540	1	Shaft-Impeller	26	3296-42	8	Nut-Lock, NI
4	3257-23	1	Key-Woodruff	27	3235-22	2	Screw-HH
5	237-87	1	Ring-Quad	28	2844	2	Washer
6	20-3210	1	Bushing-Special	29	322-14	2	Screw-HH
7	252-78	1	Bearing-Thrust	30	3296-29	4	Nut-Lock
8	252-76	1	Bearing-Thrust	31	3257-33	2	Key-Woodruff
9	252-77	1	Thrust-Washer	32	57-3500	1	Shaft-Auger
10	5-7170	1	Gear	33	37-8850	1	RH Gear Case/Bushing ASM
11	5-7180	1	Gear-Worm 21t	33:1	256-237	1	Bushing
12	252-71	2	Bearing-Thrust	33:3	7-0045	1	Seal-Oil
13	37-8860	1	LH Gear Case/Bushing ASM	34	32144-41	8	Screw-Taptite
13:1	256-237	1	Bushing	35	92-9839	1	Gasket-Gear Box
13:3	7-0045	1	Seal-Oil	36	3242-6	2	Screw-Set, SQH
14	281-1	1	Plug-Pipe, SQH				
15	3-8664	1	Washer-Thrust				
16	5210	1	Washer-Shim				
17	32120-72	1	Ring-Snap				
18	256-32	1	Bushing				
19	57-3300-01	1	Auger, RH				
*20	57-3370-01	1	Auger, LH				
21	321-4	8	Screw-HH				
22	3256-22	8	Washer-Flat				
23	20-0990	2	Bearing-Flange, Front				

\* Not illustrated



Sheet No.:5

## Crank And Mounting Assembly

Ref. No.	Part No.	Qty.	Description
1	3290-320	1	Retainer-Push On
2	61-4890	1	Knob-Chute
3	99-5906	1	Rod-Control, Chute
4	3229-1	2	Screw-CARR
5	99-5904-01	1	Bracket-Rod, Support
6	61-4940	2	Coupler
7	32121-50	3	Pin-Spring
8	353-955	2	Locknut
9	99-4978	1	Shaft-Flexible
10	99-4979	1	Hose ASM
11	100-4603-01	1	Plate-Extension, LH
12	8-8600	1	Gear-Worm, Chute
13	61-4950	1	Shaft-Worm Gear
14	3272-10	1	Pin-Cotter
15	3256-24	7	Washer-Flat
16	3296-39	4	Nut-Lock, NI
17	99-5319-01	1	Bracket - Worm Gear
18	323-6	4	Screw-HH
19	3296-29	10	Nut-Lock
20	322-5	10	Screw-HH
21	100-4604-01	1	Plate-Extension, RH
22	99-4424-01	1	Snowthrower Mount ASM
23	99-6137	3	Knob-Chute Control
24	99-5907-01	1	Bracket-Clamp

Ref. No.	Part No.	Qty.	Description
25	99-5909-01	1	Bracket-Chute, Control
26	3296-42	2	Nut-Lock, NI
27	63-3510	1	Decal - Chute Direction
28	99-6139	1	Foam-Chute, Control
29	83-1040	1	Washer - Flat
31	98-4683	2	Decal-Attachment, Dingo
32	100-4762	2	Decal-Dingo
35	100-4627	2	Reflector - Snowthrower
36	100-4612-03	1	Bracket-Retainer, Clamp
37	100-4611-03	1	Hose Retainer ASM
38	100-4620-01	1	Bracket, Clamp
39	100-4621-01	1	Retainer Plate ASM
40	32144-70	2	Screw-HH



