



## Pulley Cleaner Kit for Topdresser 1800

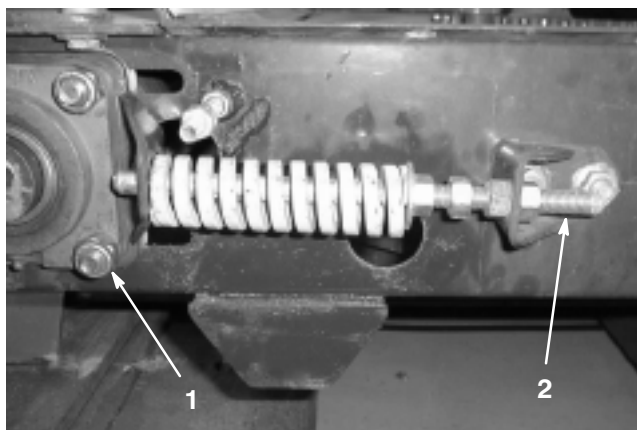
Part No. 100-7650

### Installation Instructions

## Install Front Pulley Cleaners

### Remove Front Bearing Assemblies

1. Position unit on a clean, level surface. Stop the engine, engage the parking brake, and remove the key from the ignition switch.
2. Back the nuts off on the belt tension rod on each side of the unit until you can push the front roller back enough to loosen the conveyor belt (Fig. 1). Align the pin with the access hole in the frame.

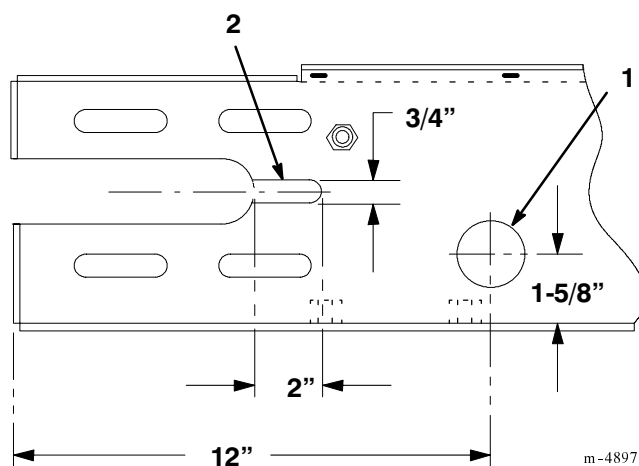


**Figure 1**

1. Front bearing assembly
2. Belt tension rod

### Drill Holes

1. If your Topdresser does not have cleanout holes, use the dimensions in Figure 2 to locate, mark, and cut a 2" diameter cleanout hole in each side of the unit.
2. Using the dimensions in Figure 2, locate, mark, and cut a 3/4" wide clearance slot in each side of the unit.

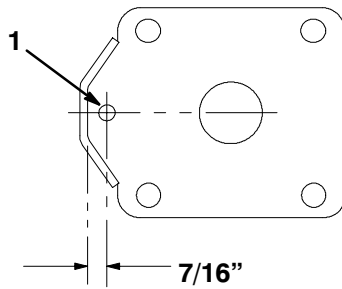


**Figure 2**

1. 2" cleanout hole
2. 3/4" clearance slot

3. Remove the conveyor belt by pulling out the lace pin holding the belt together. The pin may be bent over at both ends to retain it and will have to be straightened out for removal. Pull the pin out with a pair of pliers.
4. Remove bearing and roller tension plate from each side of the unit. The 4 bolts retaining the bearing assembly may be left in the frame side.

3. Locate, mark, and drill a 3/8" diameter hole in each of the roller tension plates (Fig. 3).

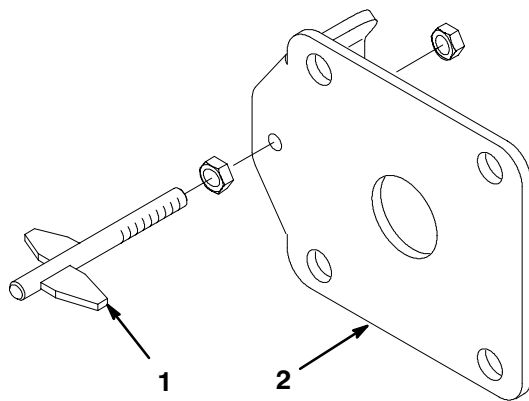


**Figure 3**

1. 3/8" diameter hole
- 

## Attach Bearing Assemblies

1. Loosely assemble the front pulley cleaners to the roller tension plates as shown in Figure 4. To find the distance from the inside of the roller tension plate to the center of the pulley cleaner, measure from the center of the pulley on the Topdresser to the outside of the frame. Adjust the outermost point of the cleaner to that dimension, positioning the pointer as shown in Figure 4, and tighten.



**Figure 4**

Front Roller

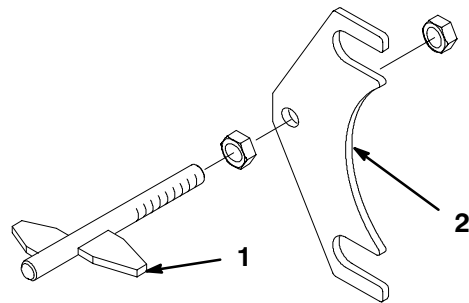
1. Front pulley cleaner position
  2. Roller tension plate
- 

2. Attach the bearing assembly to the unit in reverse order of which it was removed. Assemble the first 4 nuts retaining the bearing assembly to the unit. Turn the nuts down snug to the frame and back them off 1/2 turn to allow it to float freely.

## Install Rear Pulley Cleaners

### Assemble Rear Roller Cleaner

1. Loosely assemble the rear pulley cleaners to the cleaner adjusting plates (Fig. 5).
2. Measure the distance from the center of the roller pulley to the rear roller bearing face on each side of the unit. Adjust the points of the cleaners to those dimensions, positioning the pointers as shown in Figures 5.



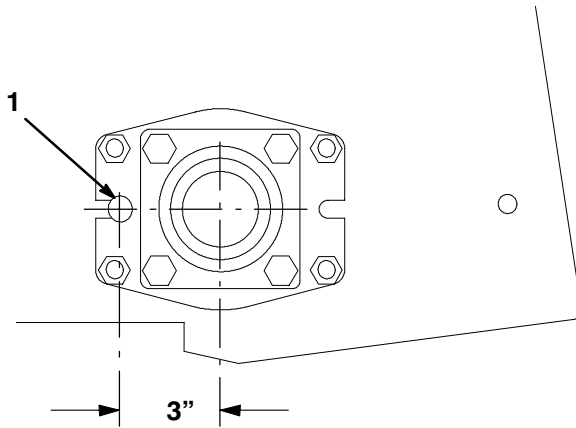
**Figure 5**

Rear Roller

1. Rear roller cleaner position
  2. Cleaner adjusting plate
- 

## Drill Clearance Holes

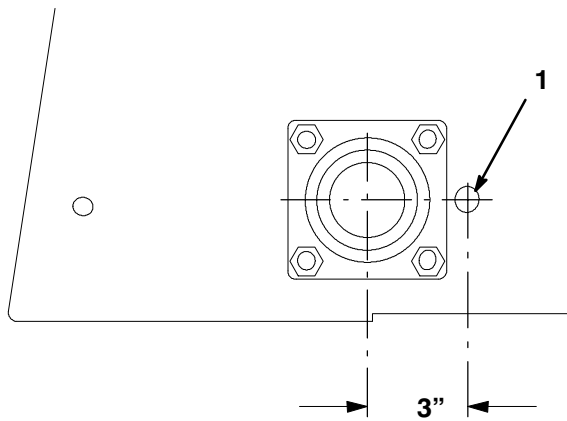
1. Remove the chain guard on the left side of the unit.
2. Turn the chain adjustment bolt to loosen the chain. Remove the chain.
3. Remove the roller drive gear.
4. Using the dimensions in Figure 6, locate, mark, and drill a 3/4" diameter hole through the roller plate and frame.
5. Replace the gear and chain. Adjust the chain tension; refer to Chain Tension in the Topdresser Operator's Manual.



**Figure 6**

1. 3/4" diameter hole

6. Remove the rear guard on the right side of the unit.
7. Using the dimensions in Figure 7, locate, mark, and drill a 3/4" diameter hole through the right side of the frame.

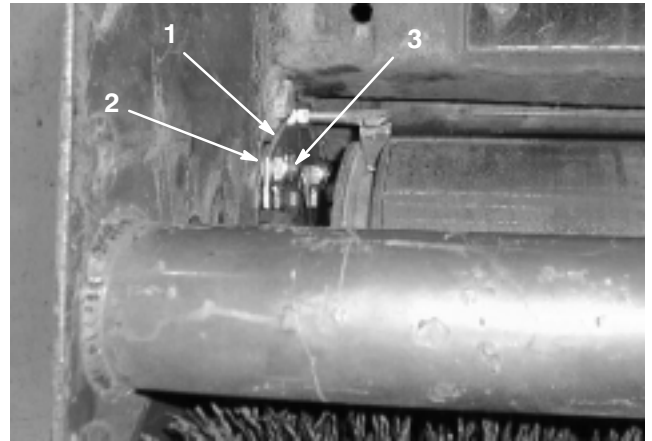


**Figure 7**

1. 3/4" diameter hole

## Assemble Cleaners to Unit

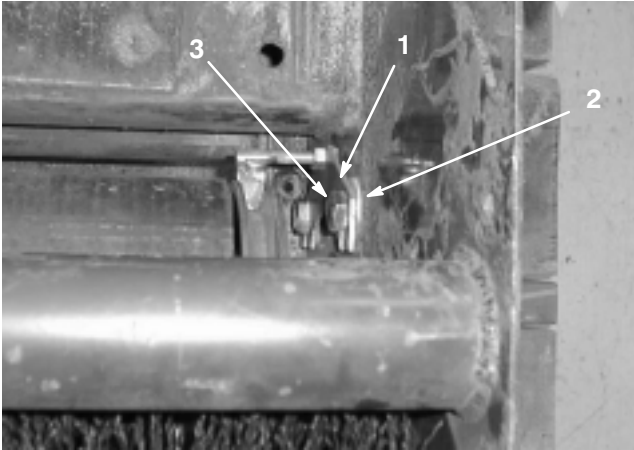
1. Remove the nuts and lockwashers on the (2) front bolts attaching the left rear roller bearing.
2. Add two flat washers to each of the bolts and loosely install the lock washers and nuts.
3. Slide the slotted ends of the cleaner adjusting plate between the flat washers and the lock washers (Fig. 8). Tighten the bolts.



**Figure 8**

### Left Rear Roller

- |                            |                        |
|----------------------------|------------------------|
| 1. Cleaner adjusting plate | 3. Lock washer and nut |
| 2. Flat washers            |                        |
4. Loosen the (2) front bolts attaching the right rear roller bearing.
  5. Slide the slotted ends of the cleaner adjusting plate between the existing flat washers and the head of the bolt (Fig. 9). Tighten the bolts.



**Figure 9**

**Right Rear Roller**

- |                            |         |
|----------------------------|---------|
| 1. Cleaner adjusting plate | 3. Bolt |
| 2. Existing flat washer    |         |

- 
- 6.** Replace the rear guards.

## Final Adjustments

1. On each cleaner, ensure there is approximately 1/32" between the cleaner and the pulley.
2. Assemble conveyor belt onto unit; refer to Topdresser Operator's Manual.