

1969-1970-1971

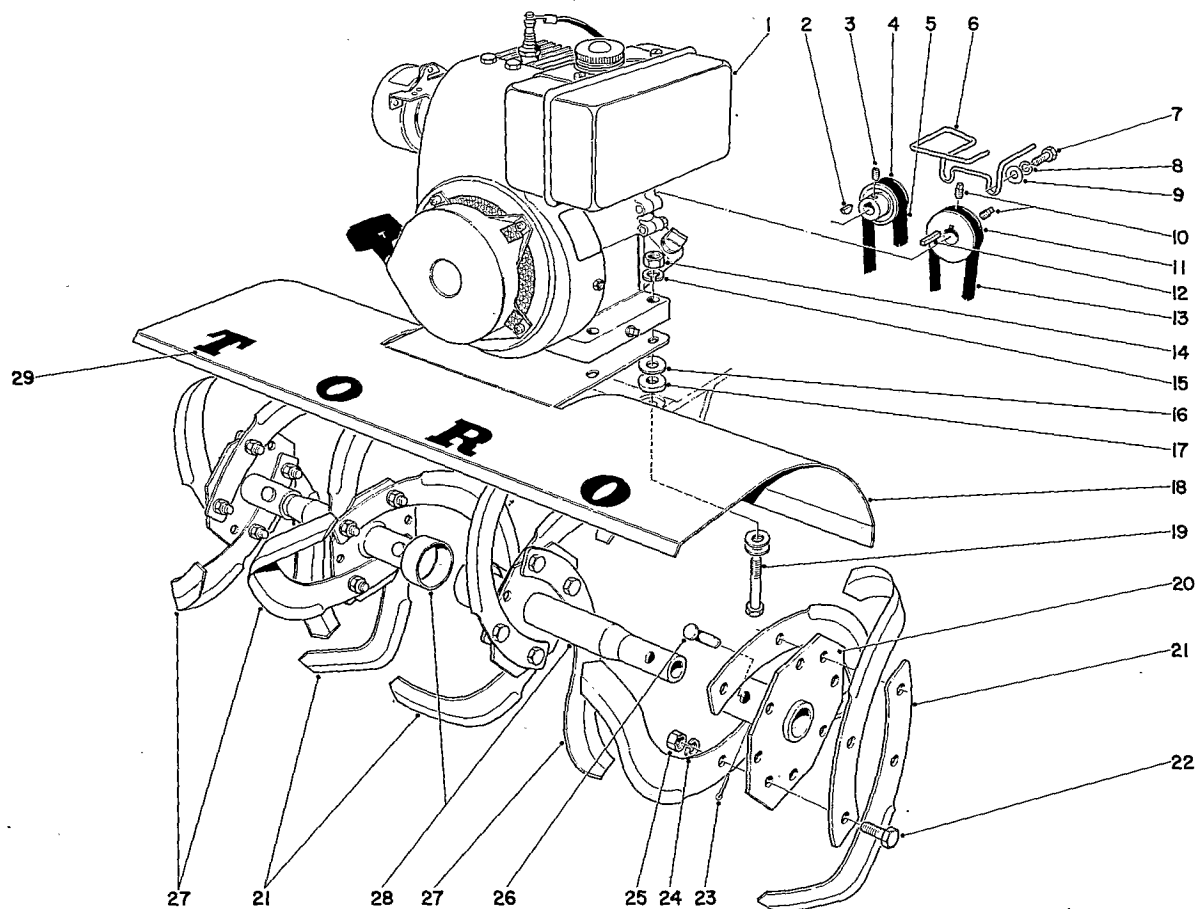
# TORO

We Take Care™

MODEL NO. 58000-900001 & UP;  
000001 & UP;  
100001 & UP

## PARTS CATALOG

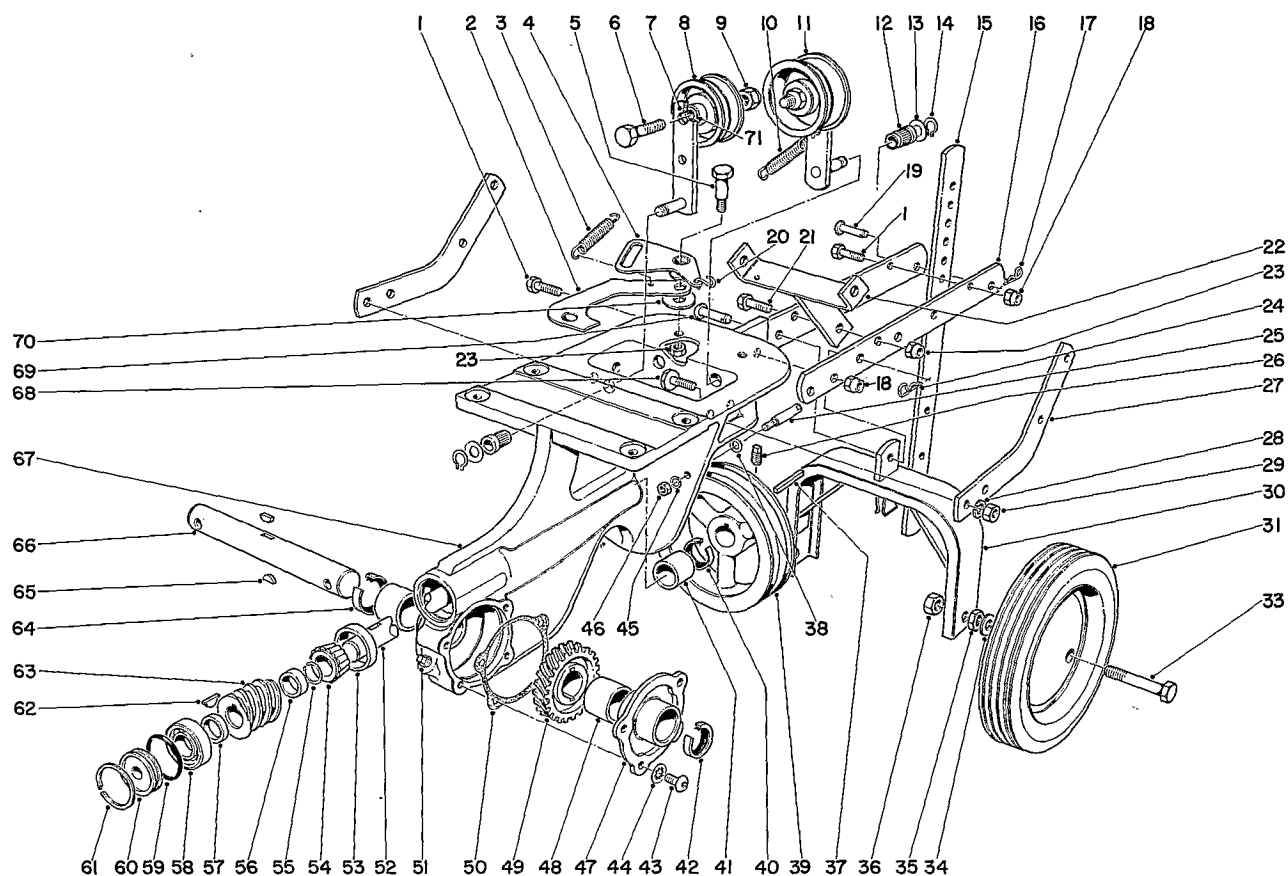
### 3 H.P. TILLER



### TINE AND ENGINE ASSEMBLY

Ref. No.	Part No.	Description	No. Used
1	221-294	Engine	1
2	3257-24	Key	1
3	3245-7	Set Screw	1
4	7-0071	Reverse Pulley	1
5	7-0074	Belt	1
6	7-3364	Belt Guide	1
7	3210-2	Capscrew	2
8	3253-4	Lockwasher	2
9	3256-3	Flat Washer	2
10	3246-2	Set Screw	2
11	7-0346	Engine Pulley	1
12	7-0036	Key	1
13	7-0354	Belt	1
14	3217-6	Nut	4
15	3253-4	Lockwasher	4

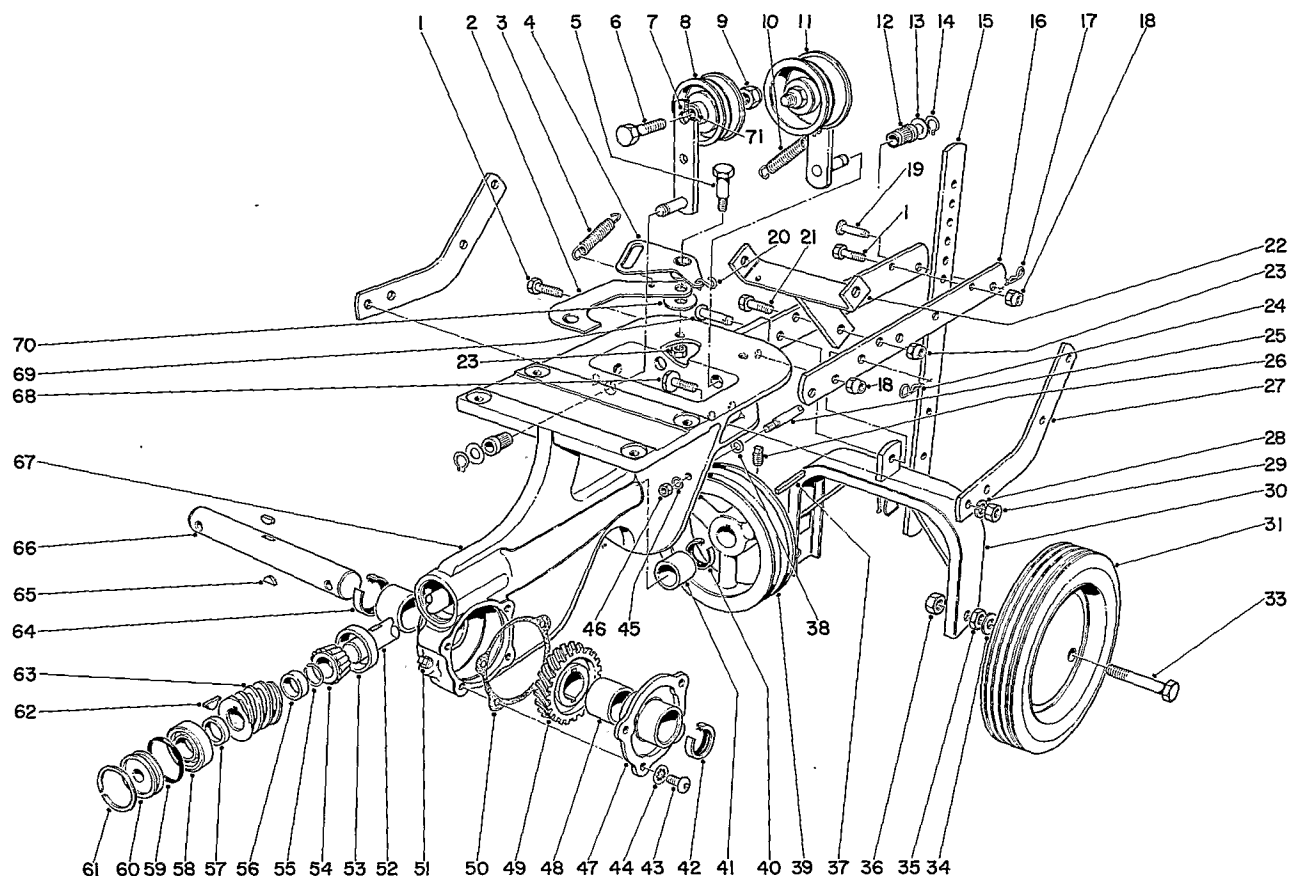
Ref. No.	Part No.	Description	No. Used
16	3256-3	Washer	12
17	7-0081	Washer	4
18	7-0072	Plant Shield	1
19	322-11	Capscrew	4
20	7-0105	Axle Hub	2
21	7-0103	Tine R.H.	8
22	323-6	Capscrew	16
23	3272-7	Cotter Pin	4
24	3253-21	Lockwasher	16
25	3217-7	Nut	16
26	7-2116	Pin Tine Drive	4
27	7-0102	Tine L.H.	8
28	7-0104	Axle Hub	2
29	7-8940	Decal	1



## CHASSIS ASSEMBLY

Ref. No.	Part No.	Description	No. Used
1	323-29	Capscrew	3
2	7-0028	Reverse Link	1
3	7-1322	Spring Reverse Return	1
4	7-0027	Bellcrank	1
5	7-0030	Shoulder Bolt	1
6	323-8	Capscrew	2
7	7-0050	Idler Arm	2
8	7-0056	Idler Pulley	1
9	32152-2	Nut	2
10	7-0025	Spring	1
11	3-4244	Idler Pulley	1
12	7-0023	Bearing - Idler	2
13	7-0024	Washer	2
14	32120-35	Snap Ring	2
15	7-0076	Depth Gauge	1
16	7-0037	Drawbar	2
17	3290-255	Hair Pin	1

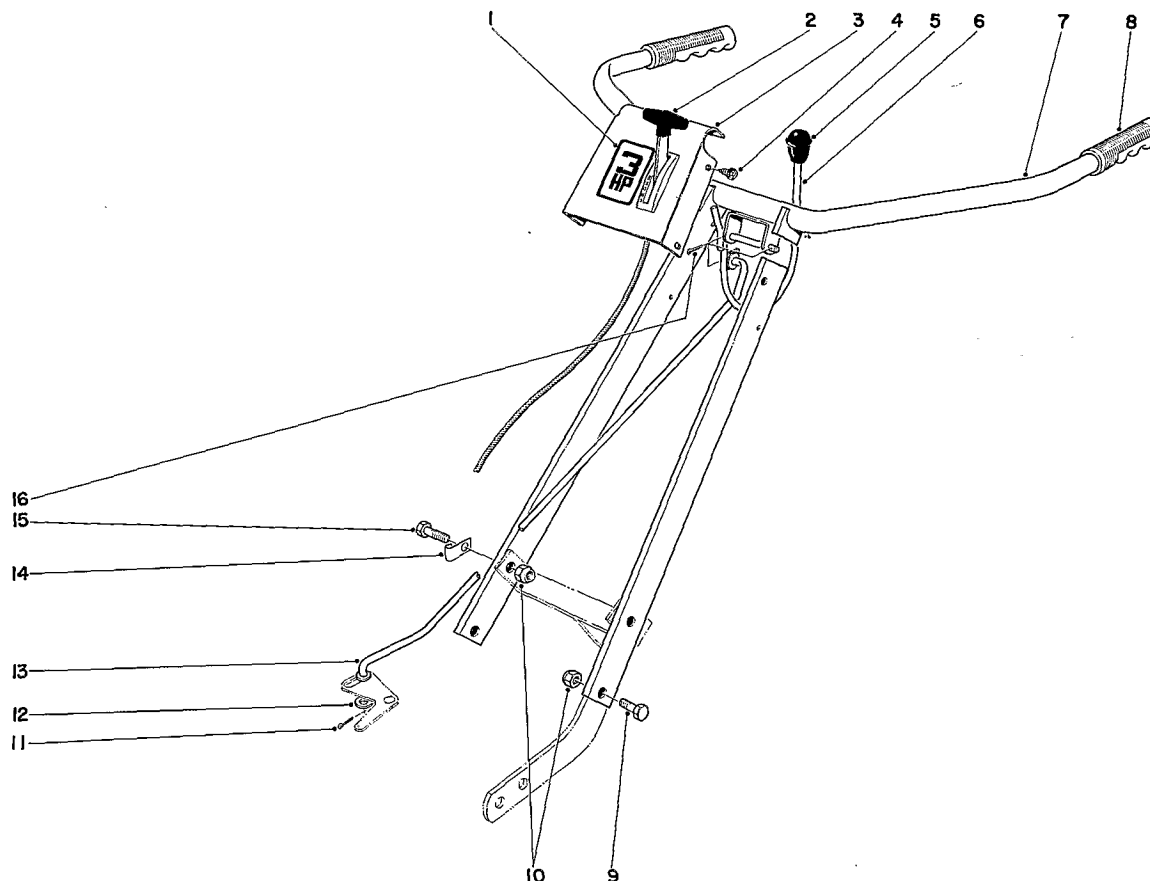
Ref. No.	Part No.	Description	No. Used
18	32152-2	Nut	3
19	7-0040	Clevis Pin	1
20	7-3618	S - Hook	1
21	322-7	Capscrew	1
22	7-0041	Support Handle Bar	1
23	32152-1	Nut	3
24	3290-255	Hair Pin	1
25	7-0347	Belt Guide	2
26	3246-2	Set Screw	2
27	7-0033	Handle Bracket	2
28	3253-21	Lockwasher	4
29	3217-7	Nut	4
30	7-0038	Wheel Bracket	1
31	7-0075	Wheel Assy.	2
33	7-3552	Axle	2
34	3256-6	Washer	2
35	3218-5	Nut	2



## CHASSIS ASSEMBLY

Ref. No.	Part No.	Description	No. Used
36	32152-3	Nut	2
37	7-0036	Key	1
38	3256-16	Washer	2
39	7-0350	Pulley Worm Shaft	1
40	7-0044	Oil Seal	1
41	256-167	Bearing	1
42	7-0045	Oil Seal	1
43	3274-31	Button Head Screw	4
44	3254-8	Washer	4
45	3255-7	Lockwasher	2
46	3218-1	Nut	2
47	7-0048	Cover	1
48	252-52	Bearing	2
49	7-0047	Worm Gear	1
50	7-0020	Gasket	1
51	281-1	Pipe Plug	1
52	7-0012	Worm Shaft	1
53	254-89	Bearing Cap	1

Ref. No.	Part No.	Description	No. Used
54	254-88	Bearing Cone	1
55	7-0013	Snap Ring	1
56	7-0014	Spacer Rear	1
57	7-0015	Spacer Front	1
58	251-207	Bearing	1
59	237-71	O - Ring	1
60	7-0017	Plug	1
61	7-0018	Snap Ring	1
62	3257-23	Woodruff Key	1
63	7-0016	Worm Gear	1
64	7-0045	Oil Seal	1
65	3257-33	Woodruff Key	2
66	7-0046	Shaft	1
67	7-0043	Chassis	1
68	32141-102	Leveler Head Capscrew	4
69	7-0040	Clevis Pin	1
70	7-0032	Washer	1
71	7-0052	Washer	1



## HANDLE ASSEMBLY

Ref. No.	Part No.	Description	No. Used
1	7-4340	Decal	1
2	7-3361	Throttle	1
3	7-3365	Cover Handle	1
4	32104-77	Screw	4
5	233-18	Knob	1
6	7-0088	Shift Lever Assy.	1
7	7-0087	Handle Bar	1
8	235-17	Handle Grip	2

Ref. No.	Part No.	Description	No. Used
9	322-5	Capscrew	2
10	32152-1	Nut	4
11	3272-7	Cotter Pin	2
12	7-0052	Flat Washer	1
13	7-0078	Clutch Rod	1
14	7-0077	Cable Clip	1
15	322-6	Capscrew	2
16	3272-7	Cotter Pin	2

## SPECIFICATIONS

**FUEL TANK CAPACITY:** 2 quarts

**CLUTCH:** Two tight-slack V-belts using idler pulleys.

**BOLO TINE:** 14" diameter #6 gauge, (16) hardened, high carbon steel blades bolted to steel hub flanges.

**BOLO TINE DRIVE:**

Forward: "4L" Section V-belt on 2.10 P.D. engine pulley to 5.10 P.D. transmission pulley. (2.42:1 reduction).

Reverse: "3L" Section V-belt on 1.30 P.D. pulley on auxiliary PTO to 5.10 P.D. transmission pulley. (3.92:1 Red.).

**TRANSMISSION:** Grey iron casting with single thread, hardened and ground steel worm and 21 tooth bronze alloy worm wheel, running in oil. (21.1:1 reduction) Total reduction 50:1.

**TRANSMISSION LUBE CAPACITY:** 4.5 oz. SAE 90

**CONTROLS:** Throttle: Control wire and casing; operating lever on handle bar cover. Positions for stop and run.

Clutch: Single, over-center lever for forward, neutral and reverse. Lever must be held in reverse position for engagement.

**WHEELS:** 7" diameter stamped steel rims. Spot welded construction, powdered iron bearings.

**TIRES:** 10 x 1.75 semi-pneumatic

**FRAME:** Cast iron chassis assembly bolted to two draw-bars which are pinned to wheel bracket and yoke assembly.

**HANDLE:** 1" diameter tubular steel handle bar welded to 16 gage rectangular steel tubing support.

**DEPTH GAUGE BAR:** 3/8" x 1-1/2" flat, steel bar; adjustable - 0 to 8".

**DEPTH OF SWATH:** 7"; 9" with multiple passes.

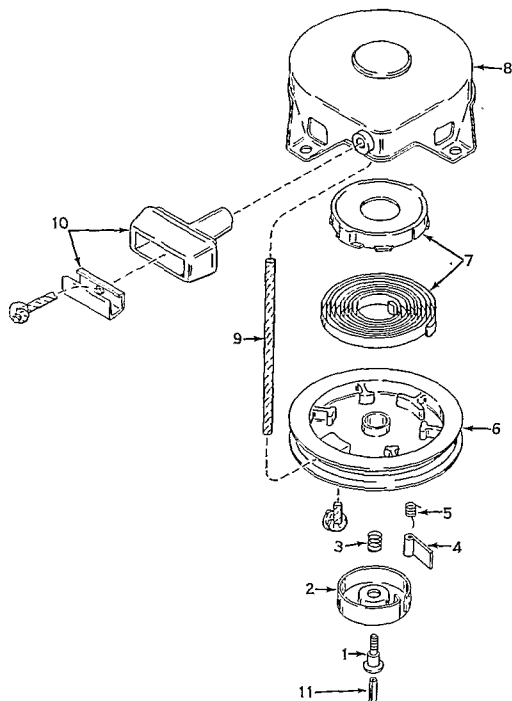
**WIDTH OF SWATH:** Adjustable by changing tine positions; 14" to 26".

**DIMENSIONS:**

Overall Width:	26"
Overall Length:	52"
Height:	35"

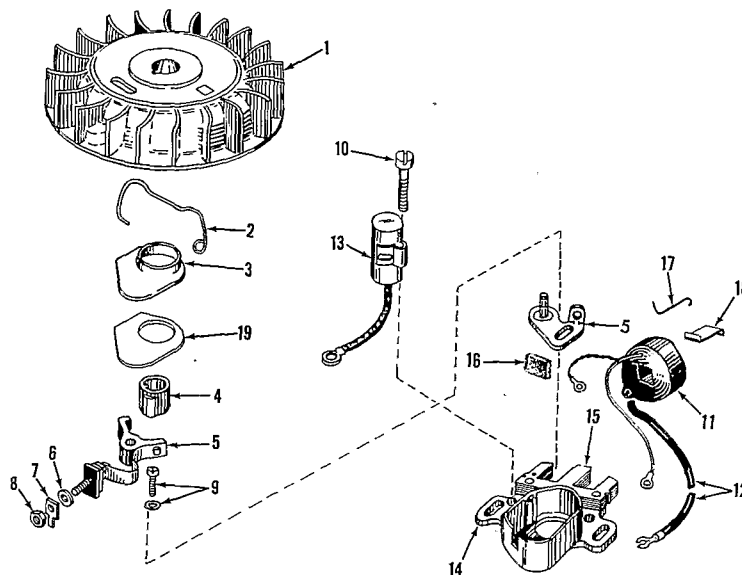
**WEIGHT:** 118 lbs.

## REWIND STARTER MODEL NO. 590420



Ref. No.	Part No.	Description	No. Used
1	590409	Screw, Retainer	1
2	590410	Retainer, R.H.	1
3	590411	Spring, Brake	1
4	590148	Dog, Starter	1
5	590412	Spring, R.H. Dog	1
6	590413A	Pulley	1
7	590414	Spring & Keeper Assy.	1
8	590415	Housing Assy., Starter	1
9	590386	Rope, Starter	1
10	590387	Handle Assy., Starter	1
11	590459	Pin, Centering	1

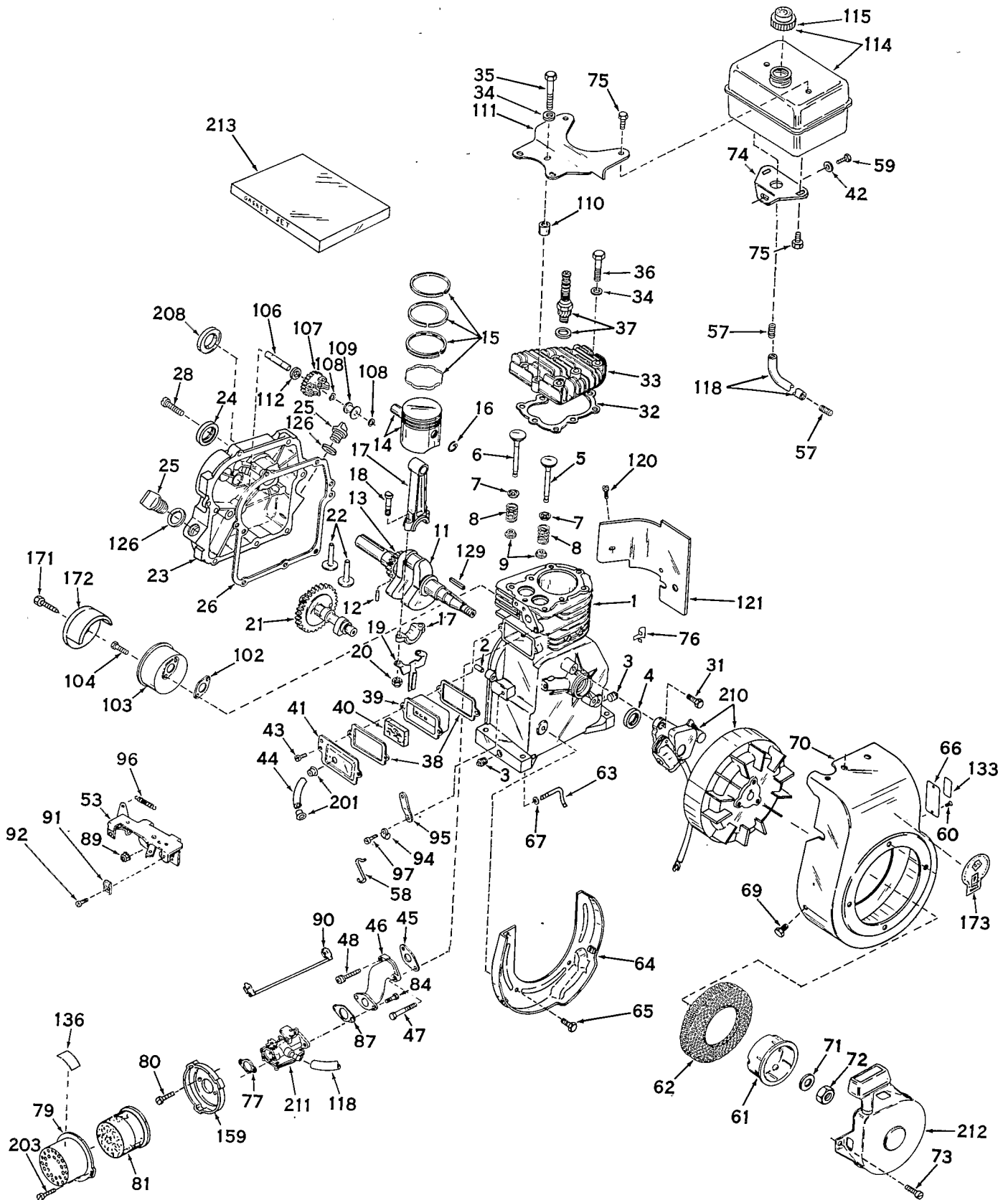
## MAGNETO MODEL NO. 610690A



Ref. No.	Part No.	Description	No. Used
1	31332	Flywheel	1
2	30551	Spring, Breaker Box	1
3	30550	Cover, Breaker Box Dust	1
4	30552	Cam, Breaker	1
5	30547A	Contact Assy., Breaker	1
6	610385	Washer, Terminal	1
7	30843	Tab, Ground Terminal	1
8	610408	Nut, Terminal	1
9	29181	Screw & Washer, Breaker	1
10	610593	Screw, Condenser Fastening	1
11	30560	Coil Assy., (Incl. Ref.	

Ref. No.	Part No.	Description	No. Used
		Nos. 12, 13 & 18)	1
12	30554	Wire, Lead	1
13	30548A	Condenser	1
14	30545	Core & Plate	1
15	30561A	Stator Assy., (Incl. Nos. 2, 3, 5 thru 14 & 16 thru 19)	1
16	30549	Felt, Cam Wiper	1
17	31311	Clip, Coil Locking	1
18	29629	Spring, Coil Wedge	1
19	32052	Gasket, Dust Cover	1

# ENGINE ASSEMBLY

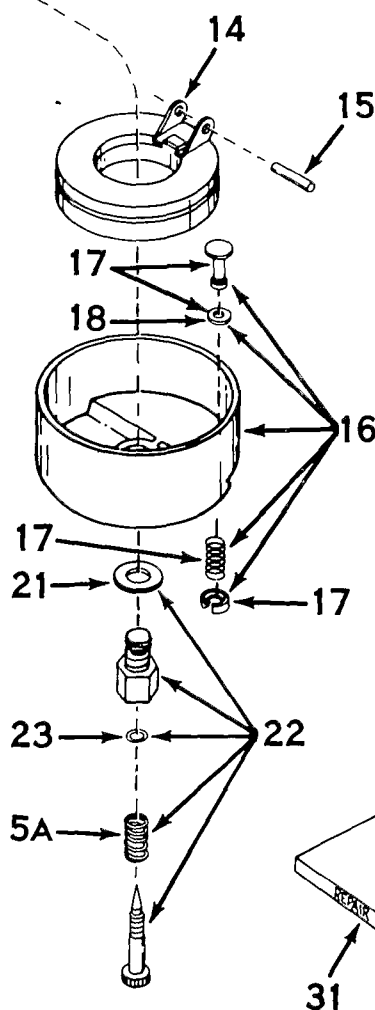
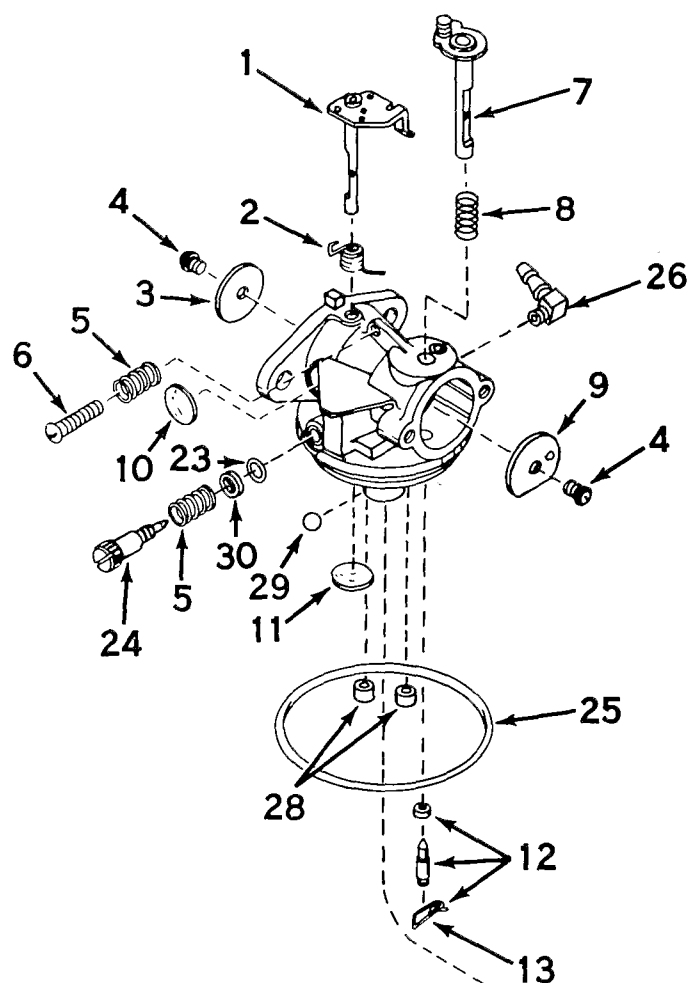


# ENGINE MODEL NO. H30-35168H PARTS LIST

Ref. No.	Part No.	Description	No. Used	Ref. No.	Part No.	Description	No. Used
1	32668	Cylinder Assy.(Incl.Nos.2,3&4)	1	59	650561	Screw, Hex hd. Sems	1
2	26727	Pin, Dowel	2	60	29309	Stud, Drive	2
3	27642	Plug, Sq. hd. pipe (Oil Drain)	2	61	590416	Cup, Starter	1
4	*29183	Seal, Oil	1	62	590417	Screen, Starter cup	1
5	29314A	Valve, Intake (Standard) (Incl. Nos. 7, 8 & 9)	1	63	31334	Rod, Governor	1
5	29316A	Valve, Intake (1/32" oversize) (Incl. Nos. 7, 8 & 9)	1	64	30658	Baffle, Blower housing	1
6	29313A	Valve, Exhaust (Standard) (Incl. Nos. 7, 8 & 9)	1	65	650561	Screw, Hex hd. Sems	2
6	29315A	Valve, Exhaust (1/32" oversize) (Incl. Nos. 7, 8 & 9)	1	66	31345	Plate, Identification	1
7	31671	Cap, Upper Valve Spring	2	67	28277	Washer, Flat	1
8	31672	Spring, Valve	2	69	650556	Screw, Hex hd. Sems	2
9	31673	Cap, Lower valve spring	2	70	**30655	Housing, Blower	1
11	31737	Crankshaft Assy. (Incl. Nos. 12 & 13)	1	71	650490	Washer, Belleville	1
12	29783	Pin, Crankshaft gear	1	72	650607	Nut, Crankshaft	1
13	27613	Gear, Crankshaft	1	73	**29716	Screw, Fil. hd. P.C.R. with Shakeproof washer	4
14	31761	Piston & Pin Assy. (Standard) (Incl. 2 of No. 16)	1	74	32762	Bracket, Fuel tank (Lower)	1
14	32662	Piston & Pin Assy. (Incl. 2 of No. 16) (.010 oversize)	1	75	650665	Screw & Lockwasher, Hex hd. cap	4
14	32663	Piston & Pin Assy. (Incl. 2 of No. 16) (.020 oversize)	1	76	29443	Fuel, Line clip	1
15	27565	Ring Set, Piston (Standard)	1	77	*27272	Gasket, Air cleaner	1
15	27566	Ring Set, Piston (.010 oversize)	1	79	31692	Body, Air cleaner	1
15	27567	Ring, Set, Piston (.020 oversize)	1	80	28820	Screw, Phil. Fil. hd. Sems	2
16	20381	Ring, Piston pin retaining	2	81	31700	Element, Air cleaner	1
17	30963B	Rod Assy., Connecting (Incl. Nos. 18, 19 & 20)	1	84	6202	Screw, Hex hd. cap	2
18	26706	Bolt, Connecting rod	2	87	*26756	Gasket, Carburetor	1
19	28594	Dipper, Oil	1	89	29752	Nut, Hex,	2
20	27573	Nut, Lock	2	90	28468	Wire Assy., Ground	1
21	33159	Camshaft, BCR, Extended	1	91	27793	Clip, Conduit	1
22	27241	Lifter, Valve	2	92	28942	Screw, Slotted hex hd. Sems	1
23	30757A	Cover, Cylinder (Incl. Nos. 24, 25, 26, 106, 126 & 208)	1	94	31335	Clamp, Governor lever	1
24	*30256	Seal, Oil	1	95	31510	Lever, Governor	1
25	27625	Plug, Oil Filler	2	96	31426	Spring, Extension	1
26	*27677	Gasket, Cylinder cover	1	97	650548	Screw, Hex slotted washer hd.	1
28	30564	Screw, Hex hd. Sems	7	102	*30081	Gasket, Muffler	1
31	650489	Screw, Hex hd. Sems	2	103	30996	Muffler	1
32	*29953B	Gasket, Cylinder head	1	104	650493	Screw, Hex hd. Sems	2
33	30579	Head, Cylinder	1	106	30574	Shaft, Mechanical governor	1
34	26073	Washer	8	107	30591	Gear Assy., Governor	1
35	650694	Screw, Hex hd. cap.	5	108	29193	Ring, Retaining	2
36	6021	Screw, Hex hd. cap.	3	109	30588A	Spool, Governor	1
37	21943	Plug, Spark (Champion J-8 or equiv.)	1	110	28212	Spacer	2
38	*27234	Gasket, Valve spring cover	2	111	28371A	Bracket, Fuel tank	1
39	27666	Breather Assy. (Incl. Nos. 38 & 40)	1	112	30590A	Washer, Spacer	1
40	27233	Element, Breather	1	114	33120	Tank Assy., Fuel (Incl. No. 115)	1
41	27667	Cover, Valve spring	1	115	33032	Cap, Fuel tank	1
42	650675	Washer, Flat	1	118	30705	Line, Fuel	1
43	650128	Screw, Fil. hd. Sems	2	120	650128	Screw, Fil. hd. Sems	1
44	32447	Tube, Breather	1	121	29745	Extension, Blower housing	1
45	*26754	Gasket, Intake	1	126	*29673	Gasket, Oil Filler	2
46	28416	Pipe, Intake	1	129	27247	Key, Flywheel	1
47	30647	Screw, Fil. hd. Sems	1	133	30586	Decal, Instruction	1
48	30646	Screw, Fil. hd. Sems	1	136	31871	Decal, Air cleaner	1
53	33114	Bracket Control	1	159	31708	Bracket, Air cleaner	1
57	28819	Spring, Coil	2	171	650539	Screw, Muffler	1
58	31858	Link, Governor-to-Throttle	1	172	30997	Cover, Muffler	1
				173	30597	Decal, Name & H.P.	1
				201	32446	Grommet, Breather tube	2
				203	650152	Screw, Fil. hd. Sems	2
				208	30318	Seal, Oil camshaft	1
				210	610690A	Magneto	1
				211	631144	Carburetor	1
				212	**590420	Starter, Rewind	1
				213	31346E	Gasket Set (Incl. items marked*)	1

\*\*In original production the starter is riveted to the blower housing. If either the starter or blower housing requires replacement, both will have to be ordered. Also order 4 screws illustrated to attach replacement starter to replacement blower housing.

# CARBURETOR MODEL NO. 631144



Ref. No.	Part No.	Description	No. Used
1	630983	Shaft & Lever Assy., Throttle	1
2	631279	Spring, Throttle return	1
3	631036	Shutter, Throttle	1
4	650506	Screw, Rd. hd.	2
5	630766	Spring, Idle regulating screw	2
5A	630738	Spring, Main adjustment screw	1
6	650417	Screw, Idle regulating	1
7	31842	Shaft & Lever Assy., Choke	1
8	630757	Spring, Choke return	1
9	31837	Shutter, Choke	1
10	630748	Plug, Welch	1
11	631027	Plug, Welch	1
12	*631021	Inlet Needle, Seat & Clip Assy. (Incl. No. 13)	1
13	631022	Clip, Inlet needle	1
14	631023	Float, Carburetor	1
15	*631024	Shaft, Float	1

Ref. No.	Part No.	Description	No. Used
16	631025	Bowl & Drain Assy., Float (Incl. Nos. 17 & 18)	1
17	27136	Plunger Assy., Drain (Incl. No. 18)	1
18	27554	Gasket, Drain plunger	1
21	*27110	Gasket, Bowl-to-body	1
22	*31839	Adjustment Screw Assy., Main (Incl. Nos. 5A, 21 & 23)	1
23	630740	"O" Ring, Adjustment screw	1
24	*631078	Screw, Idle adjustment	1
25	*631028	Gasket, Bowl-to-body	1
26	631038	Fitting, Fuel inlet	1
28	630747	Plug, Cup	2
29	631081	Ball, Aluminum	1
30	630739	Washer, Flat	1
31	31840	Repair Kit (Incl. items marked*)	1



## CARBURETOR ADJUSTMENTS

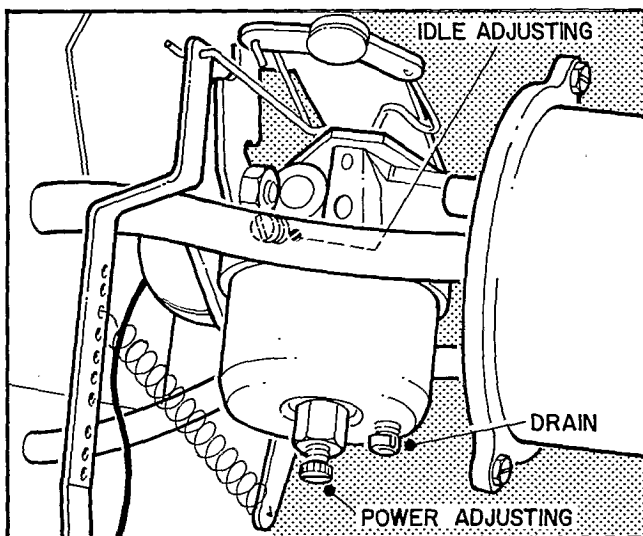


Figure 1.

Do not make unnecessary adjustments. Factory settings are correct for most applications. If adjustments are needed, proceed as follows:

1. Close power adjusting needle by turning to right (clockwise). Close finger tight only. Forcing will cause damage.
2. Open one turn (counterclockwise).
3. Close idle adjusting needle (see Fig. 1) by turning to

right (clockwise). Close finger tight only. Forcing will cause damage.

4. Open five/eighths ( $5/8$ ) turn counterclockwise).
5. Start Engine. Follow starting instructions.
6. With throttle open (carburetor control at "choke" position), adjust power adjusting needle one-eighth ( $1/8$ ) turn at a time forward or backward until engine runs smoothly. If engine tends to stall under load enrich mixture slightly (counterclockwise).
7. Hold throttle lever closed or move carburetor control to "IDLE" or "SLOW" position and adjust idle adjusting needle until engine runs smoothly proceeding as in Step 6 above.
8. Allow several seconds between each adjustment when performing either Step six (6) or seven (7) to allow engine to react to new setting.
9. Maximum engine speeds are preset at factory and should not be changed except by a qualified Toro repairman who has the necessary equipment.

**IMPORTANT:** Air cleaner should always be checked or cleaned prior to carburetor adjustments. In many cases a dirty air cleaner results in unnecessary carburetor adjustments. (See below for cleaning the air cleaner.

## SERVICING THE AIR CLEANER

Clean element every ten (10) hours or oftener if engine runs rich and emits black smoke from the exhaust. To clean:

1. Remove air cleaner cover.
2. Remove polyurethane element and wash in detergent and water solution by squeezing similar to a sponge. Squeeze out cleaning solution.

3. Re-oil element by applying a generous quantity of oil to open ends and sides.
4. Squeeze to distribute oil and to remove excess oil.
5. Reinstall element and air cleaner cover.
6. Dusty conditions may require more frequent cleaning.

## STORAGE INSTRUCTIONS

In the event engine is to be stored for any length of time (30 days or more),

1. Drain gas tank completely by removing fuel line at the carburetor or fuel tank, whichever is easier.

**CAUTION:** Drain into container outdoors away from fire or flame.

2. Inside protection of engine for storage is performed by removing spark plug and pouring one ounce of SAE 30 oil through spark plug hole into cylinder. Crank engine without starting several times to spread oil over cylinder walls.
3. Replace spark plug.

## PRODUCT CHANGES

In an effort to make improvements available to Toro owners as quickly as possible, minor changes are incorporated into Toro's products from time to time that do not become immediately shown in the Parts Catalog. If such a change apparently has been made in your unit, which is not reflected in your manual, see your Toro distributor or his authorized Toro service dealer for information and part numbers.

## THE TORO PROMISE

It is Toro's policy to design and produce Toro products to provide our customers with a high level of performance and durability in normal operation. Our products, however, are produced in high volume, and it is inevitable that occasionally a unit will reach a customer with a defect in materials or workmanship which causes that unit to fall below the normal high level of Toro

performance. Invariably, such a defect will be noticed in a residential product within one year, and in an institutional product within ninety days after purchase. Recognizing this possibility, Toro has established a simple guarantee policy and procedure that is intended to assure customer satisfaction. This guarantee statement is as follows:

### The Toro Promise

*Toro Manufacturing Corporation promises to repair any TORO product for the original purchaser if defective in materials or workmanship. The following time periods from the date of purchase apply:*

Residential products . . . . .	1 year
Residential products used commercially. . .	45 days
Institutional products . . . . .	90 days

*The costs of parts and labor are included, but the customer pays the transportation costs. Just return any residential product to a TORO Service Dealer, or any institutional product to a TORO distributor.*

Should you feel that a product is defective, and wish to rely on The Toro Promise, the following procedure is recommended:

1. Contact any TORO dealer or distributor, but preferably the dealer or distributor from whom you purchased the product.
2. He will instruct you to either return the product to him, or tell you the name and address of your nearest TORO Service Dealer if the product is to be returned to such dealer.
3. Take the product and your original sales slip, or other evidence of purchase date, to the servicing dealer.

4. The servicing dealer will inspect the unit, advise you whether the product is defective and, if so, make all repairs necessary to correct the defect without extra charge to you.

If for any reason you are dissatisfied with the dealer's analysis of the defect or the service he performs, we urge you to contact us. Write:

TORO "Customer Care" Department  
8111 Lyndale Avenue South  
Minneapolis, Minnesota 55420

[illegible]

