



# Brush Guard Kit

Workman® GTX or MDX Series Utility Vehicles

Model No. 07145

## Installation Instructions

**Important:** You cannot use or install the Ball Cage Kit (Model No. 07161) with this kit.

# Installation

## Loose Parts

Use the chart below to verify that all parts have been shipped.

Description	Qty.	Use
No parts required	–	Prepare the machine.
Long mount-bracket assembly	1	Install the brush guard (for GTX models).
Nut (5/16 inch)	8	
Brush guard	1	
Carriage bolt	2	
Bolt (5/16 x 3/4 inch)	4	
Short upper brush-guard bracket	1	Install the brush guard (for MDX models).
Carriage bolt (5/16 x 7/8 inch)	2	
Nut (5/16 inch)	8	
Brush guard	1	
Lower brush-guard bracket	1	
Bolt (5/16 x 3/4 inch)	4	
Bolt (3/8 x 1 inch)	4	
Nut (3/8 inch)	4	

## Preparing the Machine

1. Park the machine on a level surface.
2. Engage the parking brake.
3. Shut off the engine and remove the key.

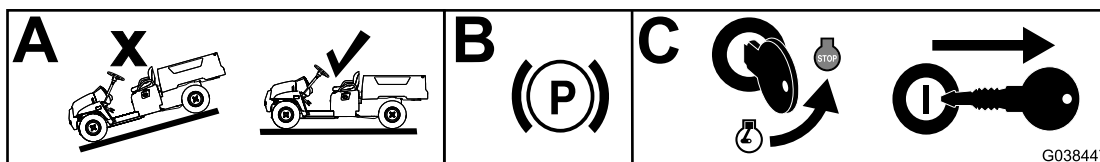


Figure 1

g038447

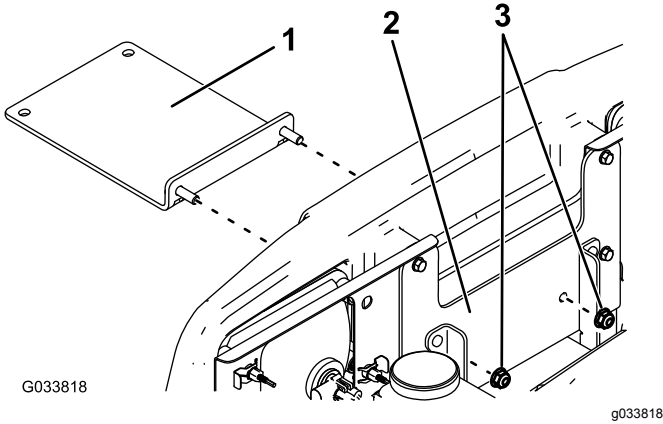


# Installing the Brush Guard

## For GTX Models

**Note:** Install all fasteners loosely.

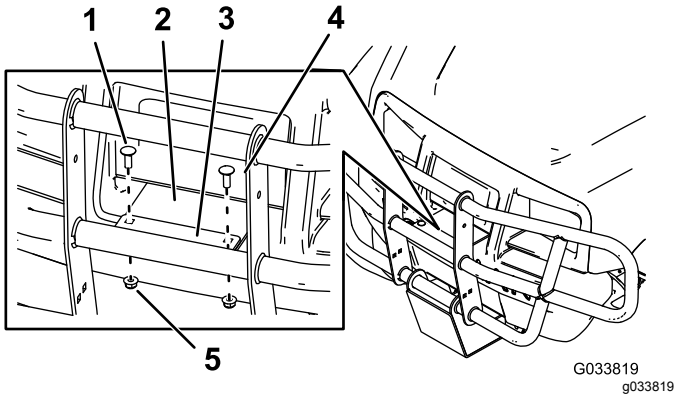
1. Install the long mount-bracket assembly through the bumper (Figure 2).



**Figure 2**

1. Long mount-bracket assembly
2. Bumper-mount bracket
3. Nut (5/16 inch)

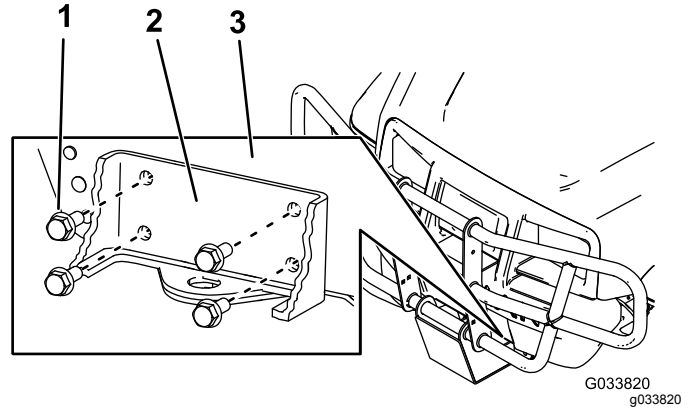
2. Open the hood.
3. Secure the bumper-mount bracket using 2 nuts (5/16 inch) as shown in Figure 2.
4. Close the hood.
5. Install the brush guard to the long mount-bracket assembly using 2 carriage bolts and 2 nuts (5/16 inch) as shown in Figure 3.



**Figure 3**

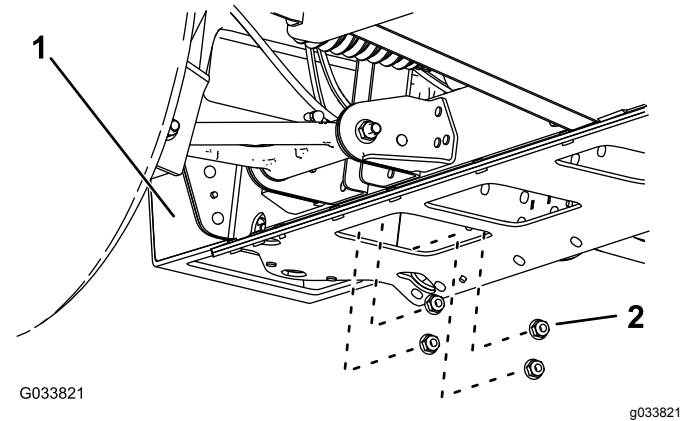
1. Carriage bolt
2. Long mount-bracket assembly
3. Brush guard
4. Carriage bolt
5. Nut (5/16 inch)

6. Secure the brush guard to the bumper-mount bracket using 4 bolts (5/16 x 3/4 inch) and 4 nuts (5/16 inch) as shown in Figure 4 and Figure 5.



**Figure 4**

1. Bolt (5/16 x 3/4 inch)
2. Brush guard
3. Bumper-mount bracket



**Figure 5**

View from Underneath the Machine

1. Bumper-mount bracket
2. Nut (5/16 inch)

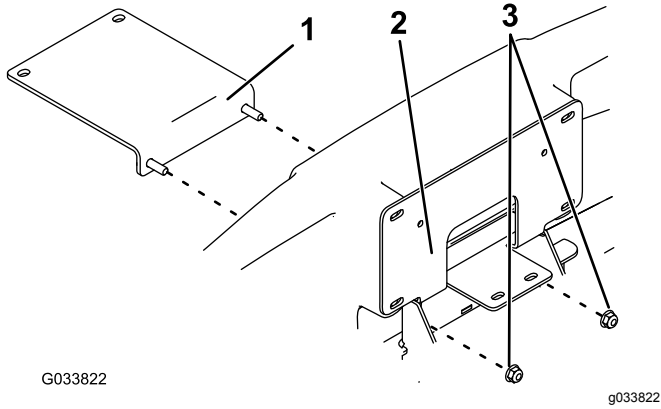
7. Torque all fasteners to 198 to 254 N-cm (175 to 225 in-lb).

# Installing the Brush Guard

## For MDX Models

**Note:** Install all fasteners loosely.

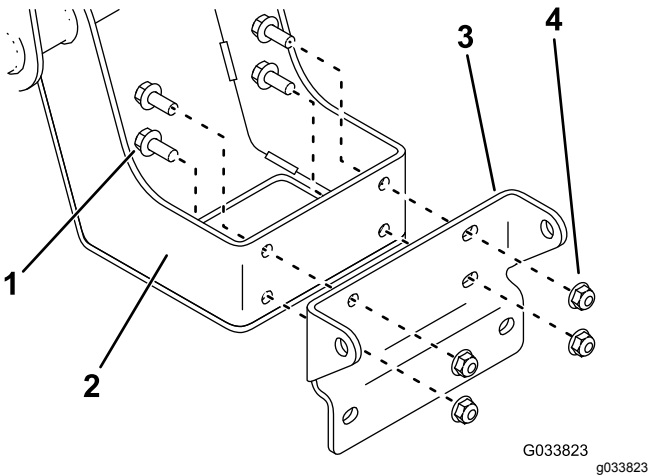
1. Install the short upper brush-guard bracket through the bumper (Figure 6).



**Figure 6**

- |                                    |                    |
|------------------------------------|--------------------|
| 1. Short upper brush-guard bracket | 3. Nut (5/16 inch) |
| 2. Bumper-support bracket          |                    |

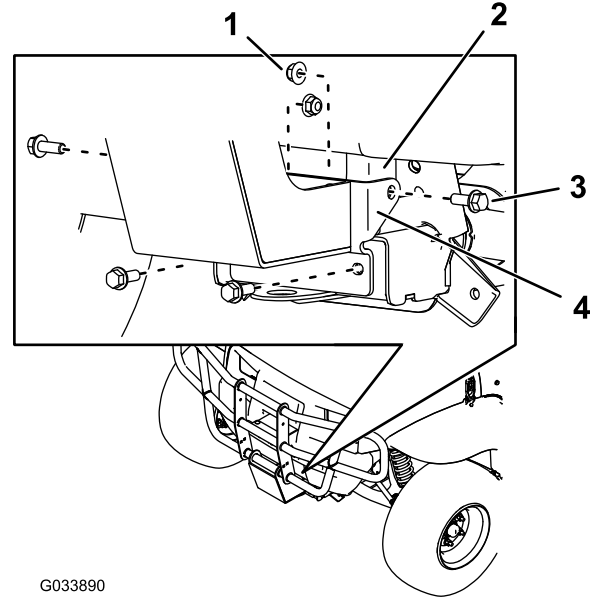
2. Open the hood.
3. Secure the bumper-support bracket using 2 nuts (5/16 inch) as shown in Figure 6.
4. Close the hood.
5. Install the brush-guard bracket to the brush guard using 4 bolts (5/16 x 3/4 inch) and 4 nuts (5/16 inch) as shown in Figure 7.



**Figure 7**

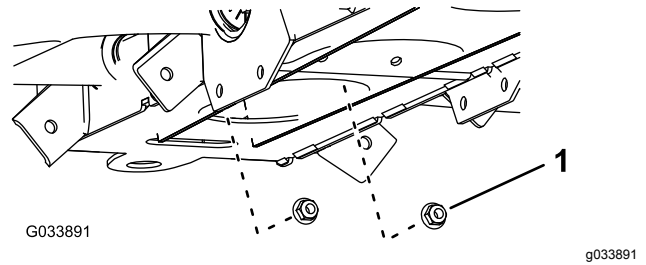
- |                           |                        |
|---------------------------|------------------------|
| 1. Bolt (5/16 x 3/4 inch) | 3. Brush-guard bracket |
| 2. Brush guard            | 4. Nut (5/16 inch)     |

6. Install the lower brush-guard bracket to the bumper-support bracket using 4 bolts (3/8 x 1 inch) and 4 nuts (3/8 inch) as shown in Figure 8 and Figure 9.



**Figure 8**

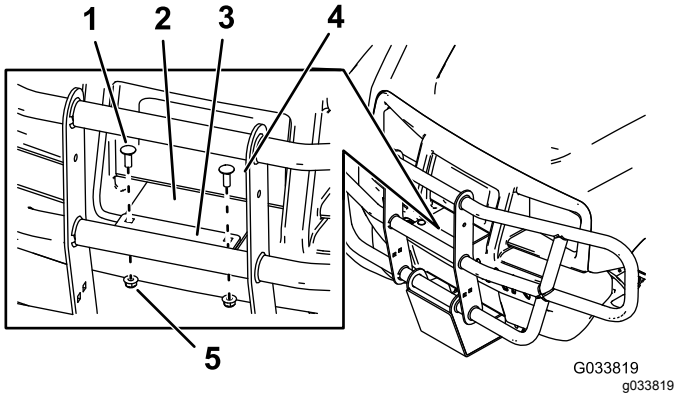
- |                           |                              |
|---------------------------|------------------------------|
| 1. Nut (3/8 inch)         | 3. Bolt (3/8 x 1 inch)       |
| 2. Bumper-support bracket | 4. Lower brush-guard bracket |



**Figure 9**  
View from Below

1. Nut (3/8 inch)

7. Install the brush guard to the short upper brush-guard bracket using 2 carriage bolts and 2 nuts (5/16 inch) as shown in [Figure 10](#).



**Figure 10**

- |                                    |                    |
|------------------------------------|--------------------|
| 1. Carriage bolt                   | 4. Carriage bolt   |
| 2. Short upper brush-guard bracket | 5. Nut (5/16 inch) |
| 3. Brush guard                     |                    |
- 
8. Torque the fasteners securing the lower brush-guard bracket to the bumper-support bracket to 37 to 45 N·m (27 to 33 ft-lb).
  9. Torque all remaining fasteners to 198 to 254 N·cm (175 to 225 in-lb).