



Count on it.

Parts Catalog

**E-Z Vac™ Complete Twin Bagger
TimeCutter® HD Riding Mower**

Model No. 79345—Serial No. 40000000 and Up



Ordering Replacement Parts

To order replacement parts, please supply the part number, the quantity, and the description of each part desired.

Understanding Reference Numbers

Each identified part in an illustration has a reference number. The reference number for a part also appears in the parts list, along with other information about the part.

This catalog uses two special reference number formats, one to indicate parts in a service assembly and another to indicate the quantity of a given part in an illustration.

Service Assembly Reference Numbers

Parts in service assemblies have reference numbers in the form a:b. The a represents the reference number of the entire service assembly and the b represents a sequential number unique to each part within the service assembly.

For example, a wheel assembly might be identified by reference number 6, the tire by 6:1, the valve by 6:2, and the wheel by 6:3. When you order the assembly identified by reference number 6, you receive all parts identified by reference numbers 6:1, 6:2, and 6:3. However, you may also order any part individually. Reference numbers of this type appear in illustration and in parts lists.

Reference Numbers Indicating Quantity

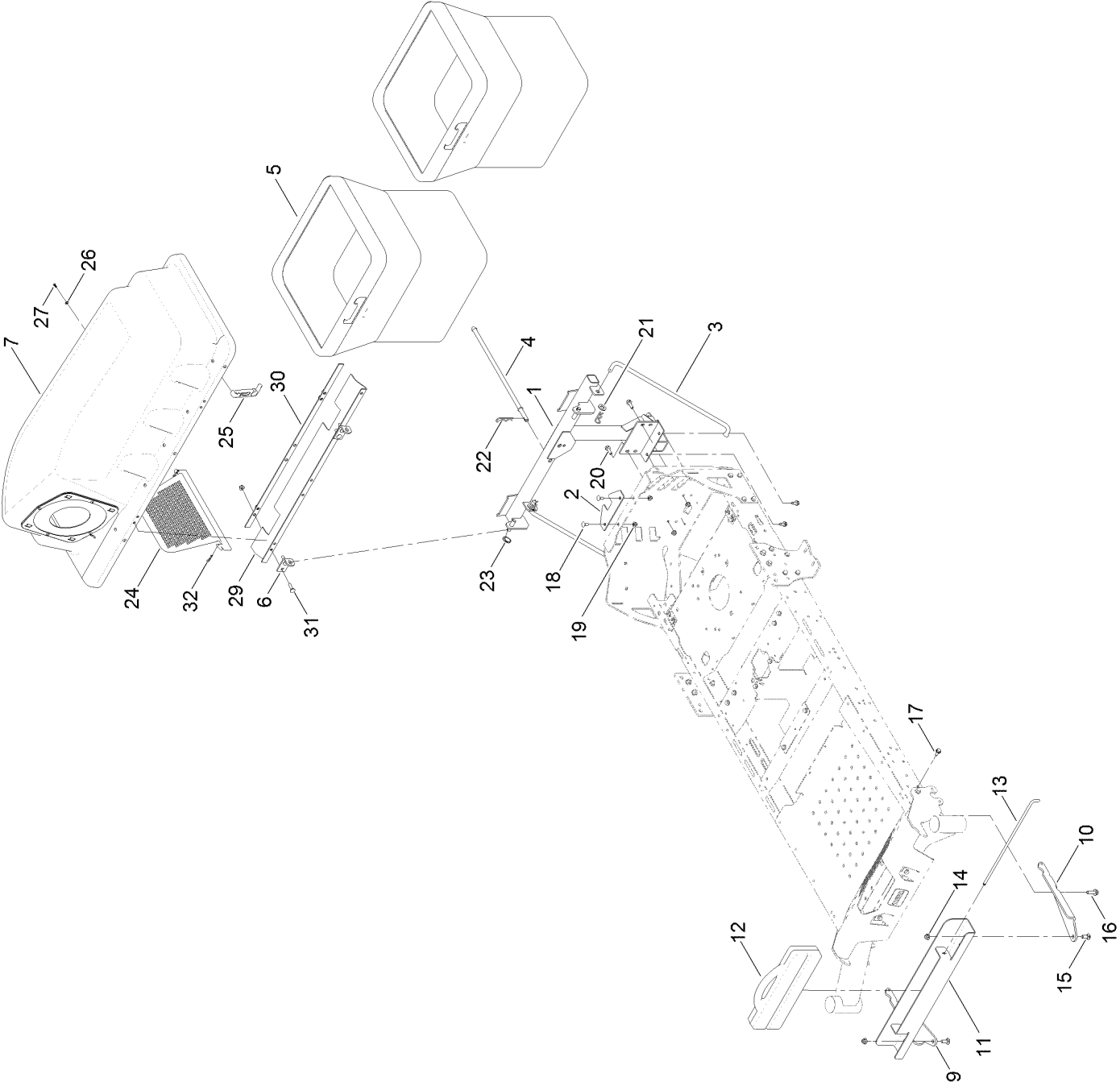
In an illustration, if a reference number indicates more than one part, the reference number has the form nX y. The n represents the quantity of the part, the X is the multiplication symbol, and the y represents the reference number.

For example, in an illustration, the reference number 2X 37 means that two of the parts identified by reference number 37 are indicated.

Contents

Bagger Assembly	4
Bag Assembly No 112-3994	6
Bagger Hood Assembly No. 121-3215	8
Blower and Drive Assembly	10
Blower Housing Assembly No. 133-4335	12

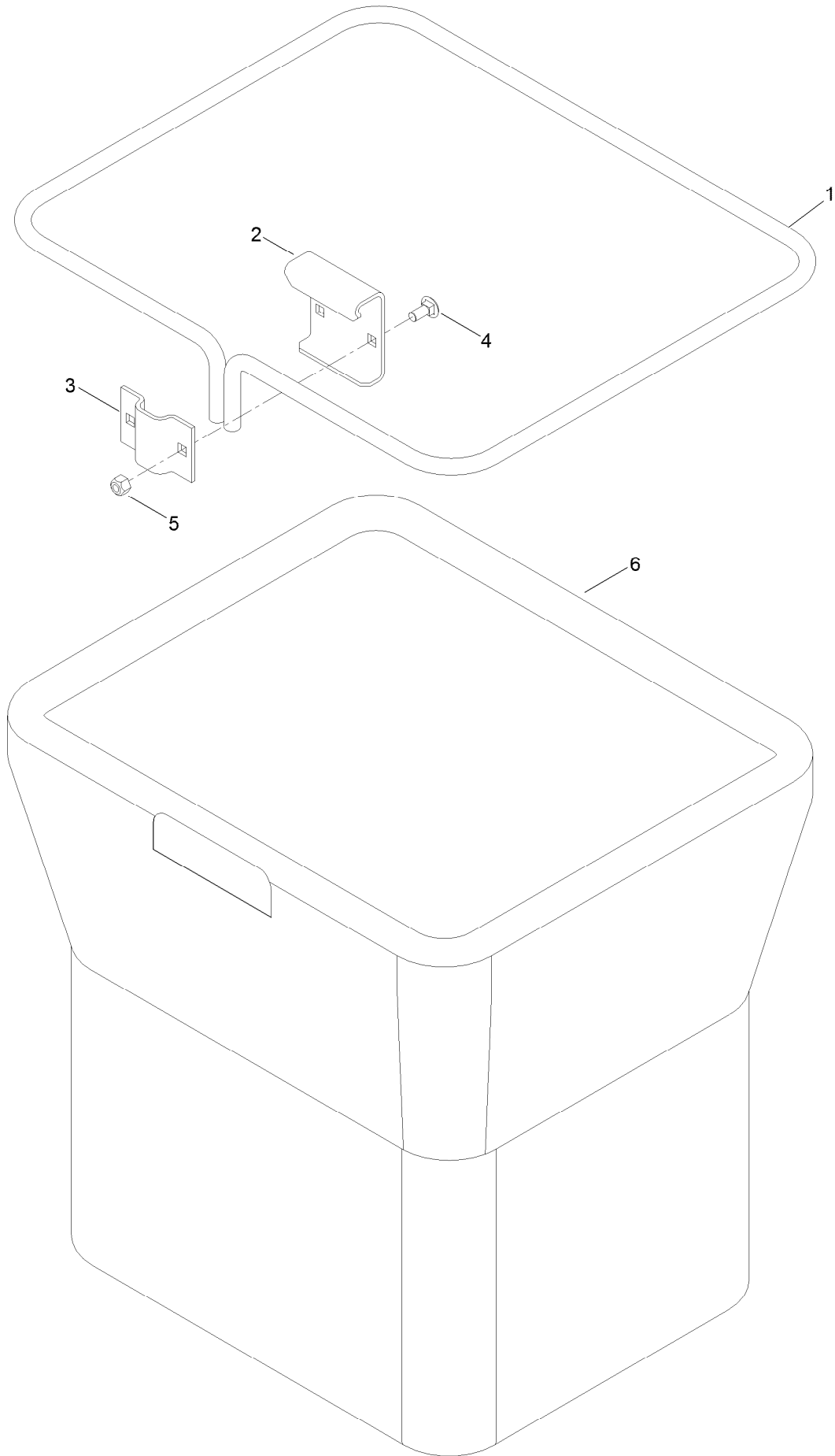
Bagger Assembly



Bagger Assembly (continued)

<i>Ref.</i>	<i>Part Number</i>	<i>Qty.</i>	<i>Description</i>	<i>Ref.</i>	<i>Part Number</i>	<i>Qty.</i>	<i>Description</i>
1	136-4231-03	1	Frame-Pivot	17	32144-70	4	Screw-HWHTF
2	131-3967-03	1	Bracket-Stabilizer	18	3230-1	2	Bolt-CARR
3	136-5593	2	Rod-Support	19	104-8300	8	Nut-HF, NI
4	131-4189	1	Rod-Hood, Down	20	3234-29	2	Screw-HHF
5	112-3994	2	Bag ASM	21	3256-26	2	Washer-Flat
6	112-3987	2	Bracket-Pivot, Hopper	22	3290-355	3	Pin-Hair
7	121-3215	1	Bagger Hood ASM	23	120-7127	1	Pin-Cotter, Circular
9	136-7461-03	1	Bracket-Weight, RH	24	112-3993	1	Screen-Bagger
10	136-7462-03	1	Bracket-Weight, LH	25	116-4992	1	Latch-Rubber
11	120-5491-03	1	Channel-Weight, Bagger	26	3256-77	2	Washer-Flat
12	109-9742-05	1	Weight-35 Pound	27	107-7461	2	Screw-Plastite
13	109-9759	1	Pin-Weight	29	116-4126	1	Seal
14	104-8301	4	Nut-HF, NI	30	116-4127-03	1	Plate-Backing
15	3231-2	2	Bolt-CARR	31	3230-3	4	Screw-CARR
16	119-4061	2	Screw-HHF	32	1-806003	2	Pin-Cotter

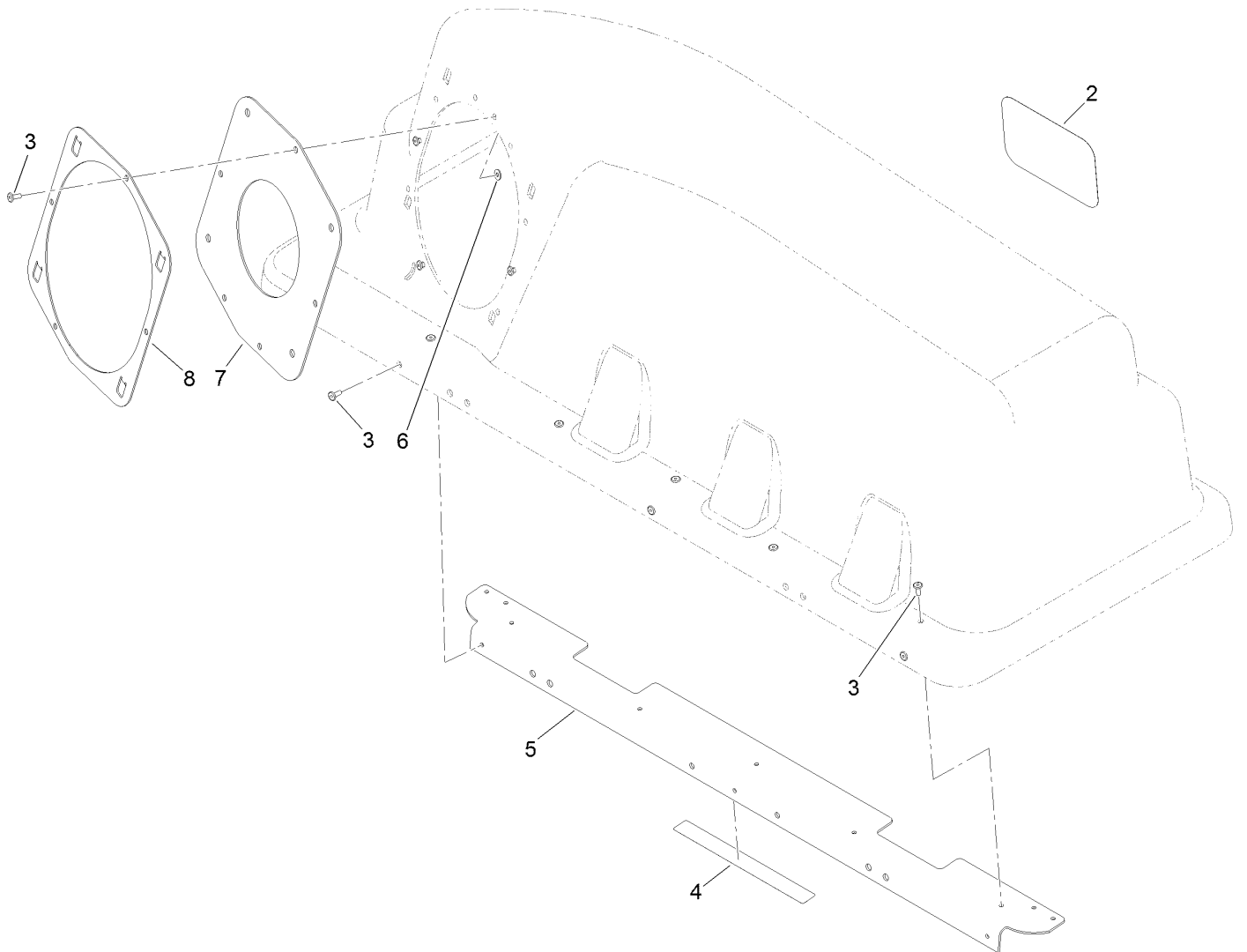
Bag Assembly No 112-3994



Bag Assembly No 112-3994 (continued)

<i>Ref.</i>	<i>Part Number</i>	<i>Qty.</i>	<i>Description</i>	<i>Ref.</i>	<i>Part Number</i>	<i>Qty.</i>	<i>Description</i>
1	114972-03	1	Frame-Bag	4	3230-1	2	Bolt-CARR
2	114973-03	1	Hanger-Bag	5	3296-29	2	Nut-Lock, NI
3	114974-03	1	Clamp	6	110-6674	1	Bag

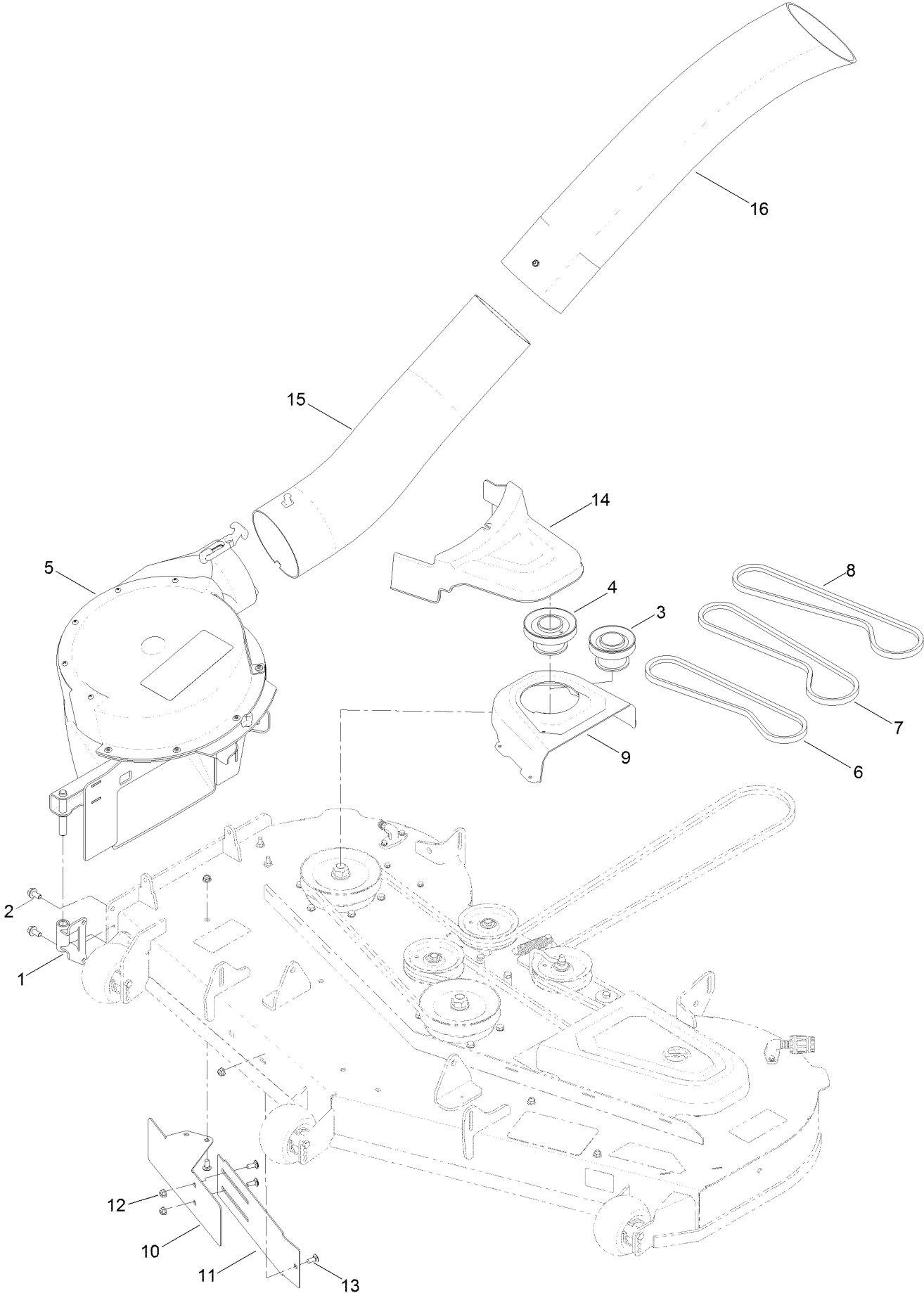
Bagger Hood Assembly No. 121-3215



Bagger Hood Assembly No. 121-3215 (continued)

<i>Ref.</i>	<i>Part Number</i>	<i>Qty.</i>	<i>Description</i>	<i>Ref.</i>	<i>Part Number</i>	<i>Qty.</i>	<i>Description</i>
2	99-4693	1	Decal	6	9202704	4	Washer-Flat
3	114439	12	Rivet-Blind	7	116-4478	1	Gasket
4	109-6809	1	Decal-Caution, Bagger	8	112-4000-03	1	Ring-Retainer
5	116-5071-03	1	Stiffener-Bagger, Top				

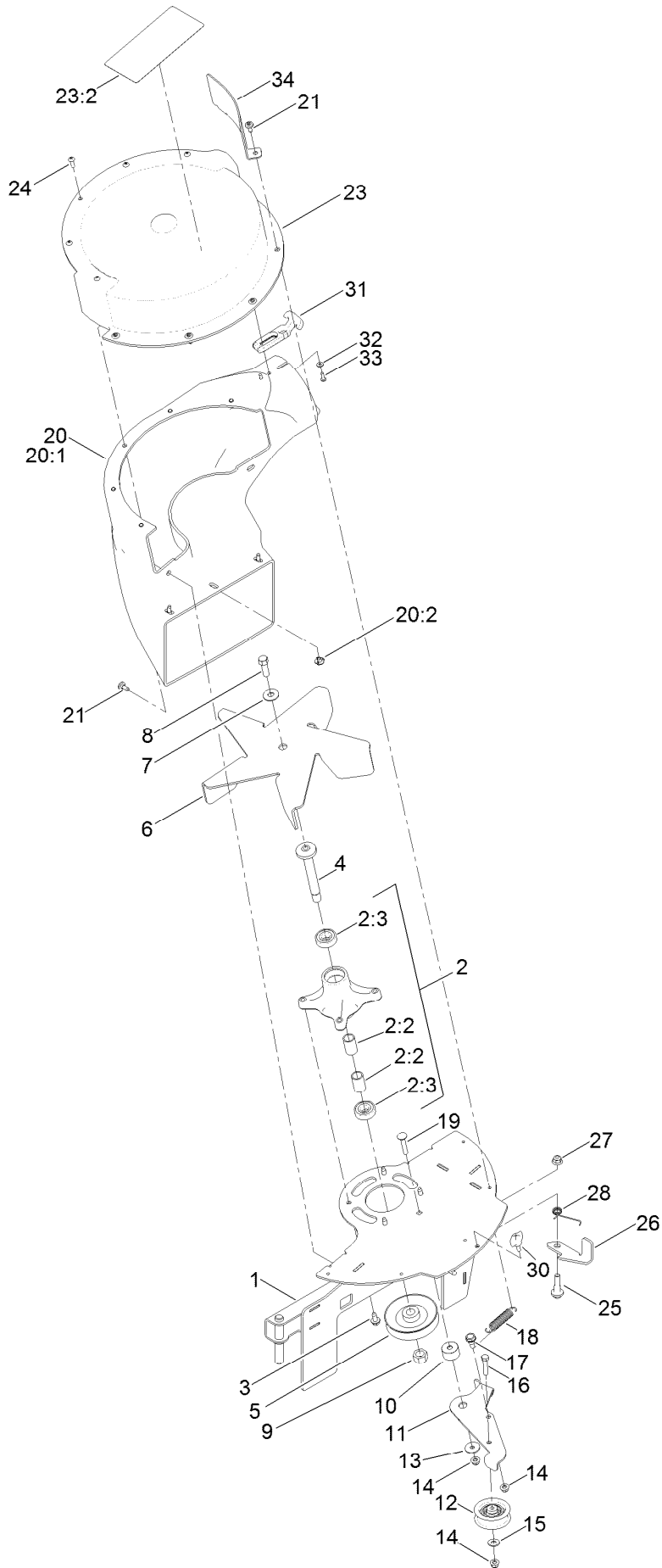
Blower and Drive Assembly



Blower and Drive Assembly (continued)

<i>Ref.</i>	<i>Part Number</i>	<i>Qty.</i>	<i>Description</i>	<i>Ref.</i>	<i>Part Number</i>	<i>Qty.</i>	<i>Description</i>
1	136-4152	1	Pivot-Blower	9	136-4151	1	Cover-Belt, RH
2	110-9380	2	Screw-HWH	10	133-7022-03	1	Baffle-Outer
3	125-0085	1	Pulley-Bagger	11	133-7021-03	1	Baffle-Inner
4	125-0086	1	Pulley-Bagger	12	104-8300	4	Nut-HF, NI
5	133-4335	1	Blower Housing Assembly	13	3230-23	4	Screw-CARR
6	127-0074	1	Belt-V	14	136-4172	1	Cover-Bagger, Powered
7	127-0075	1	Belt-V	15	140-5030	1	Lower Tube ASM
8	127-0076	1	Belt-V	16	140-5029	1	Upper Tube ASM

Blower Housing Assembly No. 133-4335



Blower Housing Assembly No. 133-4335 (continued)

<i>Ref.</i>	<i>Part Number</i>	<i>Qty.</i>	<i>Description</i>	<i>Ref.</i>	<i>Part Number</i>	<i>Qty.</i>	<i>Description</i>
1	133-9287-03	1	Frame-Blower	18	104-6415	1	Spring-Return, Pedal
2	121-0751	1	Spindle ASM	19	322-9	1	Screw-HH
2:2	120-7935	2	Spacer	20	137-5004	1	Blower Chute ASM
2:3	38-7820	2	Bearing-Ball	20:1	136-7514	1	Chute-Blower
3	32144-70	4	Screw-HWHTF	20:2	136-9187	5	Insert-T-Nut
4	117-7268	1	Shaft-Spindle	21	120-7950	10	Screw
5	133-4492	1	Pulley-Blower	23	137-5003	1	Blower Cover ASM
6	133-4336	1	Fan-Blower	23:2	136-4164	1	Decal-Danger
7	3290-465	1	Washer-Belleville	24	3258-166	5	Screw-PRH
8	26-0671	1	Screw-HH	25	130-0742	1	Bolt-Shoulder
9	3219-6	1	Nut-Hex	26	133-7058	1	Latch-Blower
10	133-4499	1	Spacer-Arm, Idler	27	104-8301	1	Nut-HF, NI
11	133-4489	1	Blower-Arm, Idler	28	133-7048	1	Spring-Torsion
12	106-2176	1	Pulley-Idler	30	98-8332	1	Knob
13	5-4460	1	Washer-Pivot	31	103-4080	2	Latch-Rubber
14	104-8300	3	Nut-HF, NI	32	9202704	4	Washer-Flat
15	3256-3	1	Washer-Flat	33	3290-500	4	Screw-PPH
16	322-7	1	Screw-HH	34	136-9213-03	1	Guard-Blower
17	92-6986	1	Bolt-Shoulder				

Notes:

Notes:



Count on it.