



**Count on it.**

**Parts Catalog**

**Flex-Force Power System™ 60V  
MAX**

**Snowthrower**

Model No. 39902—Serial No. 319000001 and Up



# Ordering Replacement Parts

To order replacement parts, please supply the part number, the quantity, and the description of each part desired.

## Understanding Reference Numbers

Each identified part in an illustration has a reference number. The reference number for a part also appears in the parts list, along with other information about the part.

This catalog uses two special reference number formats, one to indicate parts in a service assembly and another to indicate the quantity of a given part in an illustration.

## Service Assembly Reference Numbers

Parts in service assemblies have reference numbers in the form a:b. The a represents the reference number of the entire service assembly and the b represents a sequential number unique to each part within the service assembly.

For example, a wheel assembly might be identified by reference number 6, the tire by 6:1, the valve by 6:2, and the wheel by 6:3. When you order the assembly identified by reference number 6, you receive all parts identified by reference numbers 6:1, 6:2, and 6:3. However, you may also order any part individually. Reference numbers of this type appear in illustration and in parts lists.

## Reference Numbers Indicating Quantity

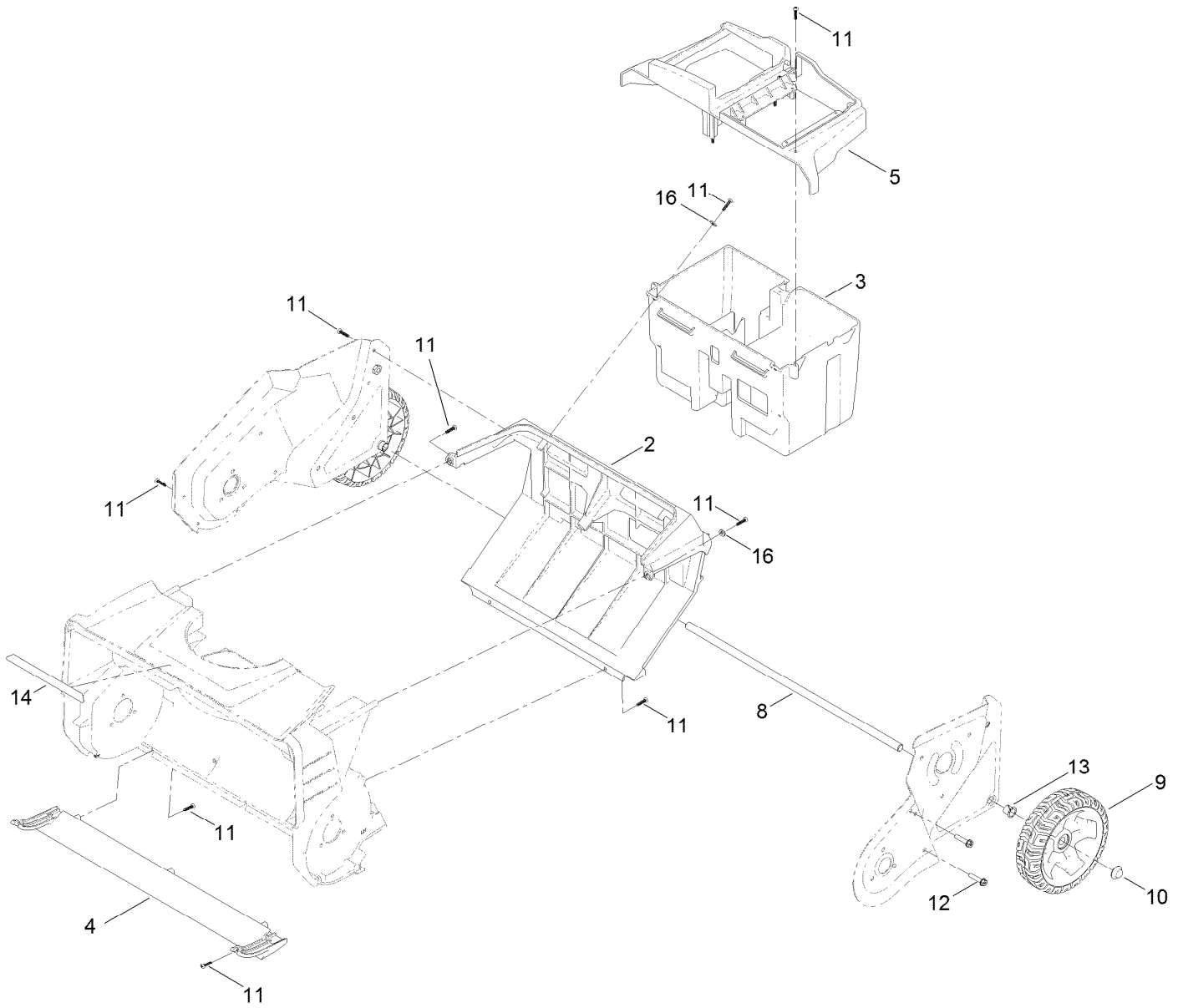
In an illustration, if a reference number indicates more than one part, the reference number has the form nX y. The n represents the quantity of the part, the X is the multiplication symbol, and the y represents the reference number.

For example, in an illustration, the reference number 2X 37 means that two of the parts identified by reference number 37 are indicated.

# Contents

- Frame Assembly ..... 4
- Drive Belt Assembly ..... 6
- Chute Assembly ..... 8
- Handle Assembly ..... 10
- Electrical Assembly ..... 12
- Attachments and Accessories ..... 14

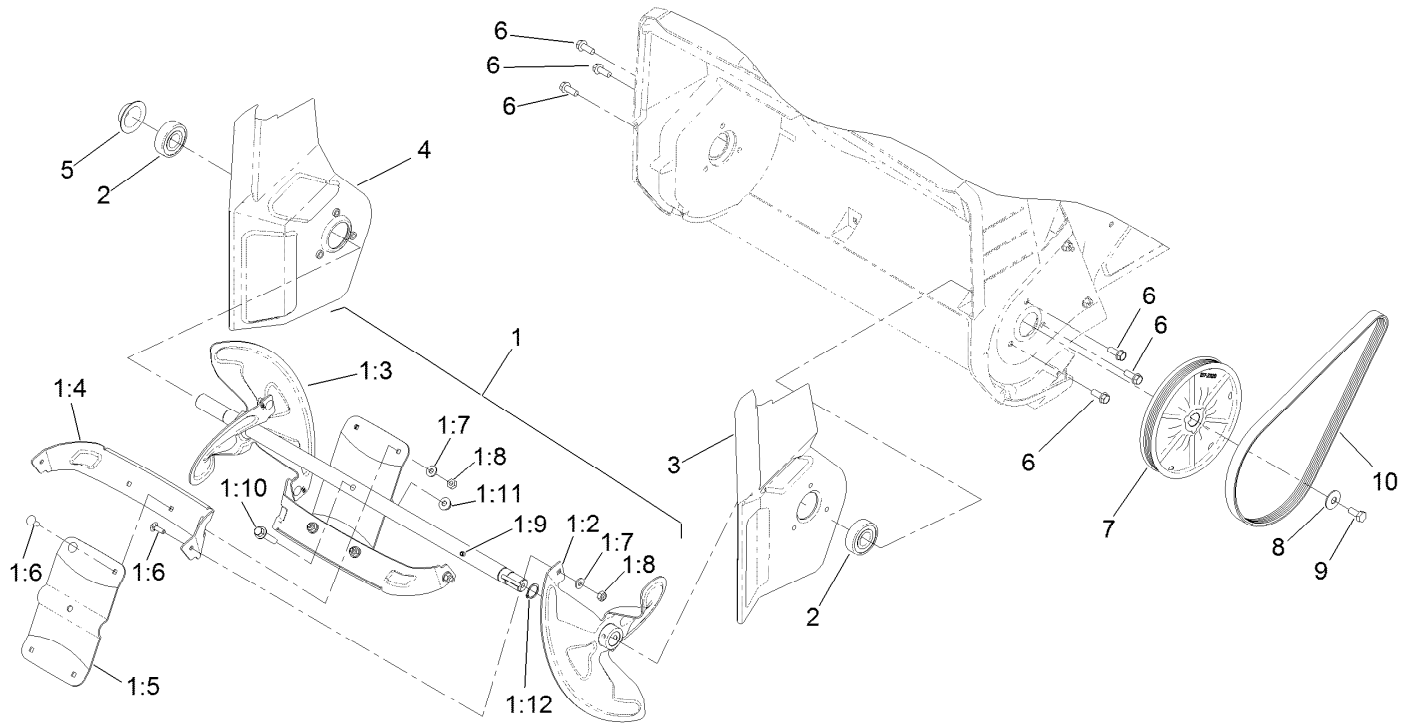
# Frame Assembly



## Frame Assembly (continued)

| <i>Ref.</i> | <i>Part Number</i> | <i>Qty.</i> | <i>Description</i>       | <i>Ref.</i> | <i>Part Number</i> | <i>Qty.</i> | <i>Description</i> |
|-------------|--------------------|-------------|--------------------------|-------------|--------------------|-------------|--------------------|
| 2           | 137-2280           | 1           | Bulkhead                 | 10          | 32112-14           | 2           | Nut-Push           |
| 3           | 137-9425           | 1           | Container-Battery        | 11          | 94-4496            | 25          | Screw-PPH          |
| 4           | 137-2277           | 1           | Scraper                  | 12          | 46-8094            | 4           | Screw-Plastic      |
| 5           | 137-9426           | 1           | Skirt-Container, Battery | 13          | 256-257            | 2           | Bushing-Nyliner    |
| 8           | 137-2256-03        | 1           | Axle                     | 14          | 137-2333           | 1           | Decal-Power Edge   |
| 9           | 137-9428           | 2           | Wheel ASM                | 16          | 3256-77            | 6           | Washer-Flat        |

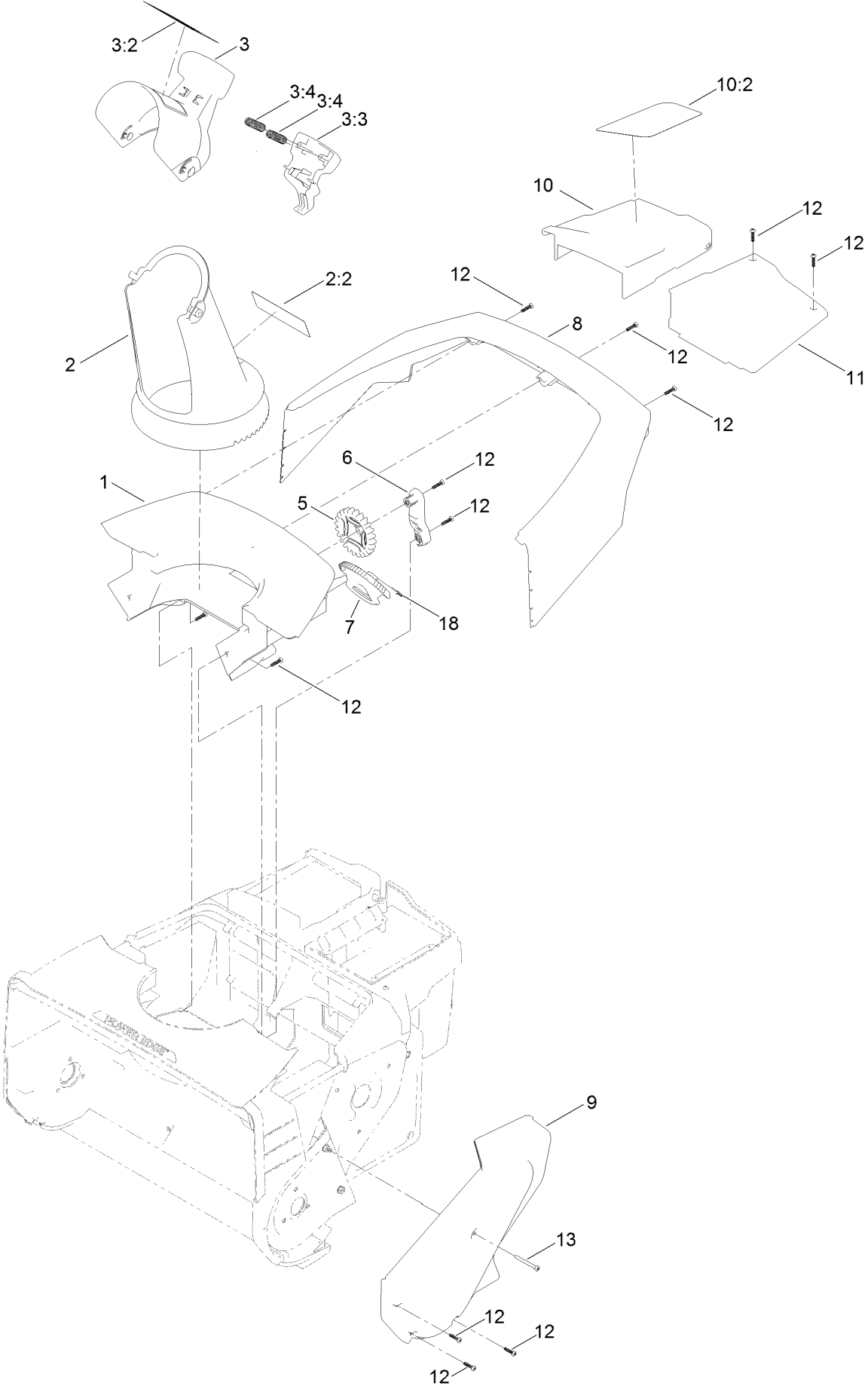
# Drive Belt Assembly



## Drive Belt Assembly (continued)

| <i>Ref.</i> | <i>Part Number</i> | <i>Qty.</i> | <i>Description</i> | <i>Ref.</i> | <i>Part Number</i> | <i>Qty.</i> | <i>Description</i>             |
|-------------|--------------------|-------------|--------------------|-------------|--------------------|-------------|--------------------------------|
| 1           | 137-9385           | 1           | Rotor ASM          | 1:12        | 137-9468           | 1           | Ring-Snap, External            |
| 1:2         | 132-9161           | 1           | Blade-Rotor, LH    | 2           | 38-7820            | 2           | Bearing-Ball                   |
| 1:3         | 132-9162           | 1           | Blade-Rotor, RH    | 3           | 137-9389           | 1           | Extension-LH                   |
| 1:4         | 137-9386           | 2           | Rotor-Center       | 4           | 137-9388           | 1           | Extension-RH                   |
| 1:5         | 137-9387           | 2           | Paddle-Center      | 5           | 117-7720           | 1           | Cap-Sideplate, RH              |
| 1:6         | 3229-34            | 8           | Screw-CARR         | 6           | 32144-85           | 6           | Screw-HWH                      |
| 1:7         | 3256-77            | 8           | Washer-Flat        | 7           | 137-2320           | 1           | Rotor Pulley ASM (6<br>Groove) |
| 1:8         | 3296-2             | 8           | Nut-Lock, NI       | 8           | 3290-456           | 1           | Washer-Belleville              |
| 1:9         | 132-9169           | 2           | Pin-Spiral         | 9           | 110-9381           | 1           | Screw-HH                       |
| 1:10        | 127-8639           | 1           | Screw-HHF          | 10          | 137-9427           | 1           | Belt-V, Ribbed                 |
| 1:11        | 104-7201           | 1           | Nut-HF             |             |                    |             |                                |

# Chute Assembly

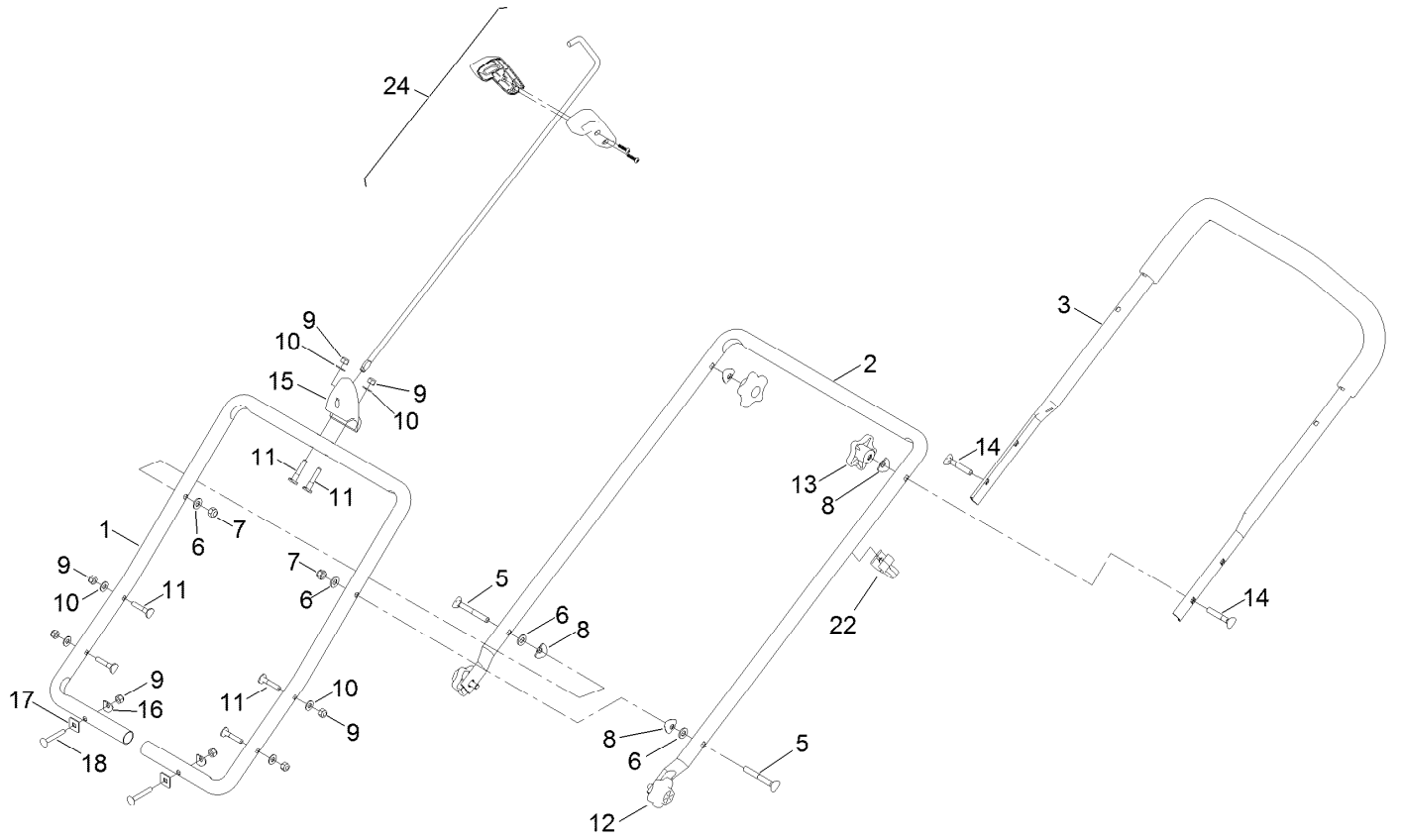




## Chute Assembly (continued)

| <i>Ref.</i> | <i>Part Number</i> | <i>Qty.</i> | <i>Description</i>      | <i>Ref.</i> | <i>Part Number</i> | <i>Qty.</i> | <i>Description</i>      |
|-------------|--------------------|-------------|-------------------------|-------------|--------------------|-------------|-------------------------|
| 1           | 137-2278           | 1           | Chute-Rear              | 7           | 139-5234           | 1           | Gear-Sector             |
| 2           | 139-5239           | 1           | Chute                   | 8           | 137-2279           | 1           | Shroud                  |
| 2:2         | 114-9035           | 1           | Decal-Danger, Discharge | 9           | 137-9431           | 1           | Cover-Belt              |
| 3           | 139-5240           | 1           | Deflector-Chute         | 10          | 139-5238           | 1           | Cover-Battery           |
| 3:2         | 114-9034           | 1           | Decal-Danger            | 10:2        | 137-2332           | 1           | Decal-Battery, 60V Snow |
| 3:3         | 117-2314           | 1           | Trigger-Deflector       | 11          | 137-2283           | 1           | Cover-Controller        |
| 3:4         | 136-7136           | 2           | Spring-Compression      | 12          | 94-4496            | 14          | Screw-PPH               |
| 5           | 137-2271           | 1           | Gear-Chute              | 13          | 110-3143           | 1           | Screw-Plastic, PPH      |
| 6           | 137-2270           | 1           | Bracket-Gear            | 18          | 139-5229           | 1           | Clip-Handle             |

# Handle Assembly



## Handle Assembly (continued)

| <i>Ref.</i> | <i>Part Number</i> | <i>Qty.</i> | <i>Description</i> | <i>Ref.</i> | <i>Part Number</i> | <i>Qty.</i> | <i>Description</i> |
|-------------|--------------------|-------------|--------------------|-------------|--------------------|-------------|--------------------|
| 1           | 132-9183           | 1           | Handle-Lower       | 12          | 137-9390           | 2           | Knob-Handle        |
| 2           | 132-9184           | 1           | Handle-Middle      | 13          | 117-5976           | 2           | Knob-Handle        |
| 3           | 137-2326           | 1           | Upper Handle ASM   | 14          | 92-2260            | 2           | Screw-Handle       |
| 5           | 125-8408           | 2           | Screw-Handle       | 15          | 137-9303           | 1           | Guide-Rod, Chute   |
| 6           | 3256-70            | 4           | Washer-Flat        | 16          | 3-7501             | 2           | Washer             |
| 7           | 3296-72            | 2           | Nut-Lock, NI       | 17          | 75-9040            | 2           | Washer-Square      |
| 8           | 107-3844           | 4           | Washer             | 18          | 3229-5             | 2           | Screw-CARR         |
| 9           | 3296-73            | 8           | Nut-Lock, NI       | 22          | 114-7988           | 1           | Guide-Cable        |
| 10          | 3256-1             | 6           | Washer-Flat        | 24          | 139-5244           | 1           | Handle ASM         |
| 11          | 117-7737           | 6           | Screw-Handle       |             |                    |             |                    |



## Electrical Assembly (continued)

| <i>Ref.</i> | <i>Part Number</i> | <i>Qty.</i> | <i>Description</i>       | <i>Ref.</i> | <i>Part Number</i> | <i>Qty.</i> | <i>Description</i> |
|-------------|--------------------|-------------|--------------------------|-------------|--------------------|-------------|--------------------|
| 1           | 137-9424           | 1           | Motor-Driver, Snow (60V) | 7           | 117-7737           | 4           | Screw-Handle       |
| 4           | 137-2347           | 1           | Dash Panel ASM W/Decals  | 8           | 104-7201           | 4           | Nut-HF             |
| 4:2         | 137-2259           | 1           | Decal-Power Clear        | 9           | 32144-85           | 3           | Screw-HWH          |
| 4:3         | 137-2258           | 1           | Decal-Operation          | 10          | 94-4496            | 8           | Screw-PPH          |
| 4:4         | 137-2257           | 1           | Decal-Caution            | 11          | 137-9439           | 1           | Charger-60V (2A)   |
| 5           | 137-9404           | 1           | Battery Track ASM        | 12          | 139-5245           | 1           | Motor ASM          |
| 6           | 137-9447           | 2           | 60V Battery, 3P 6.0Ah ●  | 13          | 139-5255           | 1           | Key-Bail           |

● Not illustrated

# Attachments and Accessories

## For 39902 Flex-Force Power System 60V MAX Snowthrower

| <b>Product Name</b>             | <b>Model/Part</b> |
|---------------------------------|-------------------|
| 60V Battery Charger 2 AMP ..... | 88602             |
| 60V LI-ION Battery 2.5 AH.....  | 88625             |
| 60V LI-ION Battery 6.0 AH.....  | 88660             |
| 60V LI-ION Battery 7.5 AH.....  | 88675             |

**Notes:**



**Count on it.**